



Strauss & Co



AUCTION WEEK

Modern, Post-War and Contemporary Art, Decorative Arts, Jewellery and Fine Wine

Fine Wine:

Crystallum | Newton Johnson Family Vineyards | Storm Wines

SUNDAY 3 APRIL 2022

10 am

Modern, Post-War and Contemporary Art, Decorative Arts and Jewellery

MONDAY 4 APRIL 2022

10 am: Session 1: Asian Art including The Property of an Oriental Collector[†]

2 pm: Session 2: Furniture, Silver and Glass including Property of a Connoisseur – Part II and The David Porter Collection[†]

TUESDAY 5 APRIL 2022

10 am: Session 3: Jewellery*

6 pm: Session 4: Modern, Post-War and Contemporary Art Figuration: Past and Present[†]

WEDNESDAY 6 APRIL 2022

2 pm: Session 5: Modern, Post-War and Contemporary Art* Day Sale

6 pm: Session 6: Modern, Post-War and Contemporary Art[†] Evening Sale

VENUE

Brickfield Canvas, 2nd Floor, 35 Brickfield Road, Woodstock

PREVIEW

Monday 28 to Saturday 2 April, 10 am to 5 pm

[†]Sessions illustrated in a printed catalogue and e-catalogue

*Sessions illustrated in an e-catalogue

PUBLIC LIVE VIRTUAL AUCTION BY

Strauss & Co

Sunday 3 April, 10 am to 1 pm

WEBINARS, IN-PERSON LECTURES AND WALKABOUTS

Please see page 129 for more details

ENQUIRIES, CATALOGUES AND SHIPPING

Office: +27 (0) 21 683 6560

shipping@straussart.co.za

CONTACT NUMBERS DURING PREVIEW AND AUCTION

Office: +27 (0) 21 683 6560 Mobile: +27 (0) 78 044 8185

CONDITION REPORTS

conditionreports@straussart.co.za

ABSENTEE AND TELEPHONE BIDS

Office: +27 (0) 21 683 6560 Mobile: +27 (0) 78 044 8185

bids@straussart.co.za

PAYMENT

Tel +27 (0) 11 728 8246

Debbie Watson debbie@straussart.co.za

SHIPPING AND COLLECTIONS

Collections can take place at Brickfield Canvas until 12 pm on Thursday 7 April. Items not collected by this time will be available for collection at the Cape Town office from Monday 11 April. Please see page 7 (Buying at Strauss & Co) for more information.

ILLUSTRATED CATALOGUE R200.00

CONDITIONS OF BUSINESS

All lots are sold subject to the Strauss & Co Conditions of Business and Privacy Policy on www.straussart.co.za



Contents

- 2 Auction Information
- 4 Board of Directors, Specialists and Services
- 4 Buying at Strauss & Co

Decorative Arts and Jewellery

Monday 4 April 2022

- 5 **Session 1 at 10 am**
Asian Art including **The Property of an Oriental Collector**
Lots 1 – 140

- 52 **Session 2 at 2 pm**
Furniture, Silver and Glass including
Property of a Connoisseur – Part II
and **The David Porter Collection**
Lots 141 – 250

Tuesday 5 April 2022

- 94 **Session 3 at 10 am**
Jewellery
Lots 251 – 330

PAGE 2
Lot 238 A large Danish silver vase, Christian F. Heise, Copenhagen, 1904-1932,
retailed by Heimbürger

OPPOSITE
Lot 135 A Japanese Satsuma moon vase, Meiji period, 1868-1912 (detail)

Specialists

EXECUTIVE

Frank Kilbourn
Executive Chairperson

Vanessa Phillips
*Joint Managing Director,
Head of Department,
Decorative Arts & Jewellery*
+27 (0) 72 445 4717
vanessa@straussart.co.za

Bina Genovese
*Joint Managing Director
Client Advisory, Marketing & Media*
+27 (0) 83 680 9944
bina@straussart.co.za

Susie Goodman
*Executive Director, Client Advisory,
Marketing & Media*
+27 (0) 72 896 7706
susie@straussart.co.za

Wimpie Nortje
Chief Technical Officer
+27 (0) 11 728 8246
wimpie@straussart.co.za

NON-EXECUTIVE

Elisabeth Bradley

Conrad Strauss

Caro Wiese

Carmen Welz

Jack Ginsberg

JOHANNESBURG

Alastair Meredith
*Head of Department,
Senior Art Specialist*
+27 (0) 71 593 5315
alastair@straussart.co.za

Wilhelm van Rensburg
*Senior Art Specialist &
Head Curator*
+27 (0) 82 808 9971
wilhelm@straussart.co.za

Marion Dixon
Senior Art Specialist
+27 (0) 82 775 5520
marion@straussart.co.za

Arisha Maharaj
Art Specialist
+27 (0) 11 728 8246
arisha@straussart.co.za

Hazel Cuthbertson
Research Specialist
+27 (0) 11 728 8246
hazel@straussart.co.za

Richard Ndimande
Art Cataloguer
+27 (0) 11 728 8246
richard@straussart.co.za

CAPE TOWN

Ann Palmer
Senior Art Specialist
+27 (0) 82 468 1098
ann@straussart.co.za

Kirsty Colledge
*Head of Department,
Senior Art Specialist*
+27 (0) 83 326 8283
kirsty@straussart.co.za

Ian Hunter
Senior Art Specialist
+27 (0) 84 257 6495
ian@straussart.co.za

Jean le Clus-Theron
Senior Art Specialist
+27 (0) 76 125 8162
jean@straussart.co.za

Matthew Partridge
Senior Art Specialist
+27 (0) 76 183 6290
matthew@straussart.co.za

Frances Holmes
Art Researcher & Cataloguer
+27 (0) 21 683 6560
frances@straussart.co.za

Gera de Villiers
*Art Researcher & Cataloguer
(Consultant)*
+27 (0) 21 683 6560
gera@straussart.co.za

Leigh Leyde
Art Researcher & Cataloguer
+27 (0) 21 683 6560
leigh@straussart.co.za

Sophie-Louise Fröhlich
Decorative Arts Specialist
+27 (0) 79 427 3834
sophie-louise@straussart.co.za

Administration

JOHANNESBURG

Debbie Watson
*Company Secretary, General
Manager, Accounts, Absentee
& Telephone Bids*
+27 (0) 82 336 8761
debbie@straussart.co.za

Jackie Murray
Client Advisory
+27 (0) 82 901 1246
jackie@straussart.co.za

Kate Fellens
Client Advisory (Consultant)
+27 (0) 11 728 8246
kate@straussart.co.za

Devon Gaunt
Administrator
+27 (0) 11 728 8246
devon@straussart.co.za

Michelle Parfett
Art Department Administrator
+27 (0) 11 728 8246
michelle@straussart.co.za

Eddie Ubisi
Store Manager
+27 (0) 11 728 8246
eddie@straussart.co.za

Bertha Masemola
Shipping
+27 (0) 11 728 8246
bertha@straussart.co.za

Jane Macduff
Logistics & Adminstrator
+27 (0) 11 728 8246
jane@straussart.co.za

Marcus Moremi
Logistics
+27 (0) 11 728 8246
marcus@straussart.co.za

Johannes Nyathi
Logistics
+27 (0) 11 728 8246
johannes@straussart.co.za

Sarah Jordaan
Wine Department Administrator
+27 (0) 82 9222 594
wine@straussart.co.za

CAPE TOWN

Gail Duncan
*Decorative Arts Administrator, Absentee
& Telephone Bids*
+27 (0) 78 044 8185
gail@straussart.co.za

Khanya Daniels-Poyiya
Decorative Arts Assistant & Store Manager
+27 (0) 78 044 8185
shirley@straussart.co.za

Sandy Avey
Art Administrator
+27 (0) 78 044 8185
sandy@straussart.co.za

Mia Borman
Marketing, Media & Client Advisory
+27 (0) 84 685 1671
mia@straussart.co.za

Stacey Brindley
Decorative Arts Assistant & Shipping
+27 (0) 21 683 6560
stacey@straussart.co.za

Mishale Kobe
Receptionist & Shipping
+27 (0) 78 044 8185
mishale@straussart.co.za

Zain Toyer
Store Manager
+27 (0) 71 723 6869
zain@straussart.co.za

Justin de Bruin
Logistics
+27 (0) 21 683 6560
justin@straussart.co.za

WINE

Roland Peens
Senior Wine Specialist
+27 (0) 82 707 0044
roland@winecellar.co.za

Higgo Jacobs
Senior Wine Specialist
+27 (0) 83 343 1422
higgoj@gmail.com

Sarah Jordaan
Wine Department Administrator
+27 (0) 82 9222 594
wine@straussart.co.za

Buying at Strauss & Co

A step by step guide for buying at auction

1. BROWSE UPCOMING SALES

The sale can be viewed on our website: www.straussart.co.za

Catalogues can be purchased from our offices or at the sale venue.

Digital catalogues can be viewed on www.straussart.co.za.

Cataloguing information

- Descriptions** include size, date, medium and attribution of the lot. Where possible, provenance, literature, exhibitions and additional notes are also included.
- Estimates** are given for all lots and are based on recent prices achieved for comparable property, taking into account quality, condition and provenance. Estimates are exclusive of Buyer's Premium and VAT.
- The reserve** is a confidential figure between Strauss & Co and the seller below which a lot may not be sold. It never exceeds the lower estimate.

Our specialists are available online to advise, discuss and help you with the lots you are interested in.

Condition reports are advisable if you are unable to attend the preview. They can be easily accessible online, or can be requested.

Saleroom notices amend the catalogue description of a lot after the catalogue has gone to press.

2. REGISTER TO BID

To place a bid, you must first register for the auction on our website www.straussart.co.za. You can do this simply by clicking on the 'Register to Bid' link and completing the short online form.

An email will be sent to you confirming your registration and paddle number. If you are bidding at Strauss & Co for the first time you might be asked for a holding deposit before you are approved to bid.

Prospective Bidders who have not previously registered with us are required to register at least 24 hours before the auction commences.

3. BID IN THE SALE

Submit a bid

Placing a bid before the auction begins allows you to get in on the action ahead of the live bidding that takes place once the auction kicks off. This can be done on our website by clicking 'Submit your bid' on the lot that you are interested in.

Absentee bids

If you would like to place a maximum bid that our auctioneer will execute on your behalf, you can click on the 'Absentee Bid' button on our website. This will open a digital form for you to complete, and it will be submitted to bids@straussart.co.za or you can complete our Bidding Form, found on our website under 'Auction Details', and submit it to bids@straussart.co.za. An sms will be sent to you to confirm your bids.

Telephone bidding

If you prefer to bid by phone, we will call you from the saleroom and bid with you on the phone. Please complete our Bidding Form, which can be found on our website under 'Auction Details', and submit it to bids@straussart.co.za. An sms will be sent to you to confirm your bids.

Virtual live bids

Once the live auction begins, you will gain access to an exclusive virtual bidding console that simulates all aspects of being at the auction house in a live sale.

Virtual live bidding is user-friendly, safe and secure.

Remember to check our terms and conditions regarding charges, including buyer's premium, which is added to the hammer price on each lot.

Please contact our Client Service Department if we can assist in any way:
Cape Town +27 (0)21 683 6560

4. IF YOUR BID IS SUCCESSFUL

You will receive an invoice and payment instructions shortly after the sale.

How do I pay and collect?

All the lots you purchase will be invoiced to the name and address that appear on the registration form.

Please arrange payment and collection immediately after the sale.

How much will I pay (Live Auctions)?

If you are successful, you will pay the hammer price plus the buyer's premium on each lot as follows:

12% for lots selling over R20 000, 15% for lots selling at and below R20 000 + VAT on the buyer's premium on each lot.

Methods of payment

Payment may be made by:--

- Electronic Transfer (EFT)
Current Account
Strauss & Co
Standard Bank: Killarney
Bank code: 007205
Current Account No: 001670891
Swift address: SBZA ZA JJ
- Credit cards acceptable to
Strauss & Co: Mastercard, Visa and
Diners Club
- Telegraphic Transfer (TT)
Remitter to bear all costs.

Insurance

Please note: Strauss & Co has partnered with iTOO Artinsure to offer an instant online insurance solution to cover purchased lots for transit anywhere in the world for the first 30 days.

To enquire please contact
+27 (0)21 683 6560
+ 27(0)11 728 8246
shipping@straussart.co.za

5. COLLECTION OF PURCHASES

1. Collection from the Cape Town auction venue

*Brickfield Canvas, 2nd Floor,
35 Brickfield Road, Woodstock*

Purchased lots can be collected at the sale unfolds (except wine and jewellery), from Monday 4 April to Thursday 7 April at 12 pm.

No collections can be made from *Brickfield Canvas* after this time as the lots will be in transit.

2. Collection from Strauss & Co, Cape Town

*The Oval, 1st Floor, Colinton House,
1 Oakdale Road, Newlands
Tel: + 27 (0)21 683 6560*

Purchased lots, excluding furniture, wine and extra large paintings, will be available for collection from Strauss & Co Cape Town from 1 pm Monday 11 April by appointment only. Please call +27 (0)21 683 6560 to make an appointment.

3. Collection from Strauss & Co, Johannesburg

*89 Central Street, Houghton
Tel: +27 (0)11 728 8246*

Clients wishing to collect from Strauss & Co Johannesburg may make use of the consolidated shipment. Collections can be made from the Johannesburg office from Tuesday 12 April. Payment of purchases can be done at Strauss & Co upon collection of purchased lots from the Johannesburg office.

PLEASE NOTE

Uncollected purchased lots remaining at the Cape Town auction venue, Brickfield Canvas, after 12 pm Thursday 7 April will be transported to Strauss & Co's Cape Town office, with the

exception of furniture and extra large paintings. As we cannot accommodate these in our Cape Town office they will be sent to storage at the buyer's risk and expense. We therefore advise that shipping is arranged directly from the auction venue.

Jewellery

Please note that jewellery can ***only*** be collected at Strauss & Co's Cape Town office and will not be available for collection from Brickfield Canvas.

4. Shipping: Door-to-door delivery service and international freight

Please contact our shipping department if you require a quote for local or international door-to-door delivery:

Shipping Department

shipping@straussart.co.za
Cape Town: +27 (0)21 683 6560

Wine

For wine deliveries and shipping please contact Sarah Jordaan
+ 27 (0)82 922 2594
wine@straussart.co.za



Monday, 4 April 2022
Session 1 at 10am

**Asian Art including
Property of an Oriental Collector**

Lots 1-140

Lot 20 A Chinese doucai saucer dish, 1723-1735 (detail)



1

**A Chinese qingbai ware dish,
Song Dynasty, 960-1279**

circular with tapering sides, the rim unglazed, raised on a low foot, *minor chips, 16,2cm diameter*; a Chinese qingbai ware pedestal dish, Song Dynasty, 960-1279, with flared tapering sides, the interior moulded and incised with cloud motifs, raised on a low foot with ribbed decoration, *damaged, chips, 17,2cm diameter*; a Chinese celadon-glazed dish, 17th/18th century, with lightly everted sides, raised on a low foot, unglazed rim, *hairline crack, 18,9cm diameter*; and a smaller example, Song Dynasty, 960-1279, with tapering flared sides, unglazed rim, *hairline crack, 10,2cm diameter* (4)

R6 000 - 8 000



1

2

**A Chinese provincial celadon-glazed bowl,
Song Dynasty, 960-1279**

the centre moulded with a stylised dragon head enclosed by incised scroll and line decoration, unglazed rim, the reverse with combed decoration, raised on a low foot, *chip to foot, 25,6cm diameter*

R4 000 - 6 000



2

3

**A Chinese Longquan celadon-glazed
jarlette, Song/Yuan Dynasty**

the bulbous body moulded with flowerheads and scrolling foliage, the sides applied with lug handles, *paper label numbered 124, 6,4cm high*; a Chinese celadon-glazed jarlette, Song/Yuan Dynasty, the sides applied with lug handles, the body suffused with craquelure glaze, *7,2cm high*; another, the compressed ovoid body with tapering sides, the shoulders applied with loop handles, the lower half of the body unglazed, *one handle repaired, 4cm high*; a Chinese miniature celadon-glazed ewer, Song/Yuan Dynasty, the tapering bulbous body with loop handle, *chips, 4,5cm high*; a Chinese celadon-glazed dish, Song/Yuan Dynasty, circular, with slightly everted rim, raised on a short foot, *12,2cm diameter*; a Chinese blue-and white bowl, Ming Dynasty, circular, the interior with a double blue-line and single blue-line border, the exterior with a light celadon green-glaze, raised on a short foot, *hairline crack, 6,5cm high*; and another, smaller, the centre loosely painted with stylised foliage, raised on a short foot, *chip to the rim, hairline crack, 11,6cm diameter* (7)

R6 000 - 8 000



3

4

**A Chinese horn, hardwood and
porcelain scholar's brush washer, the
porcelain possibly Song Dynasty,
960-1279**

circular, the centre with a crackle *jun* glaze, enclosed by a horn surround, hardwood base, *5,7cm diameter*; and a Chinese bronze scholar's table, Ming Dynasty, 1368-1644, the rectangular top with writing surface engraved with script, with scholar's implements to one side including a scholar's teapot and tablet, with Greek-key waist, raised on hipped legs headed by scroll brackets, *minor dents, 8,3cm high, 12,8cm wide, 6,2cm deep* (2)

R7 000 - 9 000

*This lot is not suitable for export



4

5

**Five Chinese blue and white jarlets,
Yuan Dynasty,
1279-1368**

four with ovoid body, each loosely decorated with sprays of foliage, flowerheads and clouds, the neck with blue-line border, the fifth baluster, similarly decorated, *fritting chips, the tallest 6,1cm high* (5)

R6 000 - 8 000



5

6

**A Chinese blue and white 'Kraak' jar,
Ming Dynasty, Wanli period, 1573-1620**

ovoid, the body painted with four panels of spotted deer amongst stylised foliage, the shoulders with intertwined *ruyi* rising to a shortened neck, *8,4cm high*; a Chinese 'Kraak' blue and white covered box, Ming Dynasty, Wanli period, 1573-1620, the cover painted with a bird amongst foliage, *label to the base numbered 194, minor chips, 3,5cm high*; a Chinese blue and white vase, Ming Dynasty, baluster, painted with sprays of flowerheads and clouds, with everted neck, *8,8cm high*; and a South East Asian blue and white covered box, 17th century, with ribbed border, the centre painted with a flowerhead enclosed by scrollwork and foliage, *label to the base numbered 113, 5cm high* (4)

R6 000 - 8 000



6

7

**A Chinese white-glazed pedestal
dish, 14th/15th century**

circular, with flared sides, raised on a low foot, *11,2cm diameter*; a smaller example, cream-glazed, suffused with craquel, *9,3cm diameter*; a Chinese cream-glazed scholar's incense bowl, 15th/16th century, the sides moulded with a pair of handles, suffused with craquel, *hairline crack, 4,8cm high*; a Chinese grey-glazed dish, 15th/16th century, with flared sides, *8,4cm diameter*; and a Chinese mottled grey-and-yellow-glazed beaker vase, 15th/16th century, cylindrical, raised on a low foot, *9,5cm high* (5)

R6 000 - 8 000



7



8



9



10



11



12



13



14

8
A South East Asian blue and white jar and cover, 15th/16th century

the ovoid body painted with sprays of foliage, the shoulders with petal shapes, with circular cover, all between blue-line bands, *the cover numbered B.65 No. 382, 7cm high*; a South East Asian blue and white jarlette, 15th/16th century, compressed ovoid, the shoulders painted with sprays of flowerheads between blue-line bands, *chip to foot, 3,5cm high*; a South East Asian blue and white jarlette, 15th/16th century, ovoid, painted with three *botehs* enclosing scrolling foliage between blue-line borders, *5,9cm high*; a South East Asian blue and white jarlette, 15th/16th century, the octagonal body painted with six cartouches enclosing geometric motifs and foliate sprays, the shoulders similarly painted, raised on a low foot, *6,2cm high*; and another, the ovoid body painted with two shaped cartouches enclosing a flowerhead against a diaper ground, between double blue-line borders, the shoulders painted with wave design, raised on a low foot, *chip to the rim, 4,9cm high* (5)

R5 000 - 7 000

9
A South East Asian jarlette, 15th/16th century

the ovoid body painted with scrolling foliage and flowerheads, the shoulders with petal motifs, raised on a low foot, *glaze chip, 6,1cm high*; another, the ovoid body painted with six sprays of flowerheads between blue-line borders, raised on a low foot, *chips, 5,8cm high*; two South East Asian jar and covers, 15th/16th century, each ovoid, the first the cover with panels of loosely painted diaper and geometric motif panels, surmounted by a finial, raised on a conforming base, the whole with blue-line borders, the other the cover loosely painted with wave motifs between blue-line borders, surmounted by a ball finial, conforming base, raised on a low foot, *the smaller 3,9cm high*; a South East Asian miniature kendi, 15th/16th century, the bulbous body loosely painted with scrolling foliage, the shoulders with stylised stiff-leaf pattern, *6,9cm high*; and a South East Asian dish, 15th/16th century, circular, the centre painted with a flowerhead, the exterior with stylised petal motifs between blue-line borders raised on a low foot, the whole suffused with craquelure glaze, *chips, hairline cracks, 3,9cm high* (6)

R5 000 - 7 000

10
Two South East Asian brown-glazed covered bowls, 15th/16th century

in sizes, each cover surmounted by a spire finial, one decorated with scrolling foliage enclosed by line borders, the body similarly decorated, raised on a pedestal foot, *the taller 12,5cm high*; a South East Asian blue-glazed covered bowl, 15th/16th century, the cover surmounted by a spire finial and painted with linework and stylised scrolling foliage, *minor chips, 8cm high*; a South East Asian brown-and-black-glazed jarlette, 15th/16th century, the ovoid body painted with a band of flowerheads and scrolling foliage, the shoulders painted with petals, against a brown craquelure ground, raised on a low foot, *7,5cm high*; and a smaller example, 15th/16th century, the ovoid body painted in blue with three rondels enclosing a flowerhead between line and dot work, the shoulders with petal motif between double blue-line borders, against a brown craquelure ground, *5,4cm high* (5)

R5 000 - 7 000

11
Three South East Asian jarlettes

ovoid, one blue and white, painted with sprays of foliage and flowerheads, one blue and white against a craquelure glaze ground, painted with two cartouches enclosing a fish against a diaper ground, one blue and white, against a black craquelure glaze ground, *minor chips, the tallest 5,5cm high*; and a South East Asian two-handled jarlette, ovoid, the shoulders applied with loop handles, raised on a low foot, *minor chips, 8,1cm high* (4)

R3 000 - 5 000

12
A Southeast Asian wine ewer, Sawankhalok, 14th/15th century

the shoulders embossed with a pair of contesting dragons between ribbed borders, applied strapwork handle, *restoration to the spout, 16,4cm high*; and a South East Asian oil jar, Sawankhalok, 14th/15th century, the compressed globular body with moulded and ribbed shoulders, the lower half unglazed, *9,2cm high* (2)

R4 000 - 6 000

cf. Ayala Museum, Philippines, Fujian Ware Found in the Philippines (Song-Yuan Period 10th-14th Century), where a similar ewer was exhibited.

13
An East Java brown-glazed Martavan, 16th/17th century

tapering ovoid, the shoulders applied with four lug handles, the lower half unglazed, *firing faults, 29,5cm high*; and another, mustard-glazed, *minor chips, 21,5cm high* (2)

R5 000 - 7 000

14
A brown-glazed Martavan, 17th century

ovoid, the shoulders applied with four lug handles, *27,5cm high*

R6 000 - 8 000

PROVENANCE

Gifted by Lord Charles Somerset to Dr Faure the D.R. Minister in Wynberg and thence by descent. Purchased by the current owner on 29/1/1968.



15

A Chinese blue and white 'Kraak' bowl, Ming Dynasty, Wanli period, 1573-1620

the centre decorated with auspicious symbols within a four-sided diaper frame, the cavetto with four shaped panels enclosing flowerheads and Buddhist symbols, the border with four panels enclosing pomegranates alternating with stylised tassels against a diaper ground, wavy rim, the reverse painted with four shaped panels enclosing flowerheads alternating with stylised tassels, the border painted with four sprays of flowerheads, raised on a low foot, *the footrim drilled for hanging, 21,2cm diameter*

R5 000 - 7 000



15

16

A rare Chinese Yixing peach-form washer, Kangxi period, 1662-1722

moulded in high relief to the exterior with a gnarled branch-form handle bearing budding peach blossoms and leaves, *chip, 5,4cm high*

R10 000 - 15 000



16

17

A Chinese blue and white 'Master of the rocks' style bowl, Qing Dynasty, Kangxi period, 1662-1722

the centre painted with a band of clouds enclosing an undulating river enclosed by four archaic symbols, enclosed by a double blue-line border, the rim with double blue-line border, the reverse with a mountainous landscape with a river and pine trees in the foreground, enclosed by double blue-line borders, raised on a low foot, *underglaze-blue apocryphal Chenghua six-character mark enclosed by a double blue-line, restoration, chips, hairline cracks, 16,4cm diameter*

R5 000 - 7 000



17

18

A Chinese blanc de chine libation cup, Qing Dynasty, Kangxi period, 17th century

of navette shape, moulded in high relief with a tiger and contesting dragon amongst prunus branches, the reverse with a deer, raised on a pedestal foot, *minor chips, 6cm high*; a Chinese blanc de chine ewer, Qing Dynasty, Kangxi period, 17th century, the ovoid body moulded to either side in high relief with a spray of prunus blossom, with elongated neck and flared rim, the side applied with a harp-shaped handle, with elongated spout, raised on a low foot, *hairline crack, 10,2cm high*; and a Chinese blanc de chine vase, Qing Dynasty, 18th/19th century, gourd-shaped, moulded in high relief with a branch of prunus blossoms, raised on a low foot, *minor chips, 13,6cm high (3)*

R8 000 - 10 000



18

19

A Chinese blanc de chine figure of Guanyin, Qing Dynasty, 18th/19th century

the robed figure with serene expression seated in *lalitasana mudra* on a lotus throne, one hand resting on her knee, the other holding a scroll, *repair, chips, 19,4cm high*; and a Chinese blanc de chine Dehua figure of Bodhidharma, Qing Dynasty, 18th/19th century, the creamy white-glazed emaciated hooded bearded figure seated in flowing robes bared at the chest, the left leg raised and right arm swept over the knee, with pierced earlobes, large eyebrows and knotted brows, raised on a moulded stiff-leaf base, *the reverse with four-character Dehua seal mark, chips, hairline crack, 21,5cm high (2)*

R8 000 - 10 000



19

20

A Chinese doucai saucer dish, Qing Dynasty, 1723-1735

circular, the centre enamelled with a five-clawed dragon chasing a flaming pearl enclosed by a double blue-line, the border enamelled with stylised *ruyi* enclosed by a double blue-line, the reverse enamelled with clouds above crashing waves, between double blue-line borders, raised on a low foot, *underglaze-blue six-character Yongzheng mark enclosed by a double blue-line, 11,7cm diameter*

R12 000 - 15 000



20



21

A Chinese blue and white miniature spittoon, Qianlong period, 1735-1796

with everted rim, the body decorated with sprays of leaves, the moulded scroll-shaped handle decorated with a stylized flower, *fritting chips to the rim, 8,5cm high, Christie's The Nanking Cargo, lot 1186, paper label, 28 April-2 May 1986*; a Chinese blue and white bowl, Qing Dynasty, Qianlong period, 18th century, the centre painted with a peony blossom within a blue-line border the cavetto with three further sprays below a diaper band, sienna-glazed rim, *café au lait* exterior, raised on a low foot, *restoration, 16,3cm diameter, The Nanking Cargo, Christie's, lot 2557 paper label, 28 April-2 May 1986*; and four Chinese blue and white tea bowls and saucers, Qing Dynasty, Qianlong period, 18th century, each painted to the centre with prunus blooms, bamboo and scholar's rocks, above a diaper band, sienna-glazed rim, *café au lait* exterior, raised on a low foot, *chips, each tea bowl 3,9cm high, The Nanking Cargo, Christie's, lot 5230 paper label, 28 April-2 May 1986* (10)

R6 000 - 8 000

22

A Chinese famille-rose powder-blue glazed vase, Qing Dynasty, 18th/19th century

the ovoid body moulded with a writhing *chilong* amongst gilded butterflies, fruit, flowerheads and foliage, the elongated neck with flared rim enamelled to the front with peonies, melons, pomegranate and foliage and to the reverse with a gilded band and scrolls, the low foot with gilt Greek key-lock pattern, sienna-glazed rim, *wear to the gilding, minor restoration and chips, 27,5cm high*

R6 000 - 8 000

23

A Chinese blue and white teapot, Qing Dynasty, Qianlong period, 18th century

the ovoid body painted with sprays of prunus blossoms, the conforming cover with a peach finial, the moulded leaf-shaped handle and spout painted with further sprays of prunus, *fritting chips, 9,9cm high*; a Chinese blue and white teapot, Qing Dynasty, Qianlong period, 18th century, the ovoid body painted to each side with a panel enclosing riverscape with mountains in the distance, enclosed by prunus blossoms, the shoulders with bamboo and leaves, the side applied with a moulded leaf-capped handle, raised on a low foot with blue-line border, *11cm high*; a Chinese famille-rose teapot, Qing Dynasty, Qianlong period, 18th century, the ovoid body enamelled to either side with a small boy learning with a small dog and an attendant holding a teapot looking on, the maiden stitching, with a tutor seated at a table, looking on, the shoulders with gilded flowerheads and foliage, the cover enamelled with chrysanthemum and peony blossoms and surmounted by a spire finial, the side applied with a loop handle, *chips, 11,5cm high*; a Chinese blue and white sparrow beak milk jug, Qing Dynasty, Qianlong period, 18th century, the baluster body painted with a continuous scene of dwellings before a riverscape with a mountain in the distance, the conforming cover surmounted by a gilded flowerhead finial, the side applied with a loop-shaped handle, raised on a low foot, *12cm high*; and a Chinese blue and white teapot stand, Qing Dynasty, Qianlong period, 18th century, of petal-shaped outline, the centre painted with a dwelling before a riverscape with figures at various pursuits, the border with a diaper band, gilt rim, *minor chip, 9cm wide* (5)

R7 000 - 9 000



21



22



23

24



24

A Chinese Wucai vase, Qing Dynasty, 18th/19th century

the four-sided heavily potted baluster body enamelled to each side with a medallion, each enclosing a pair of attendants and three medallions with small boys above a stylised stiff-leaf border, the shoulders enamelled with three medallions each enclosing a dragon against a diaper ground, the neck with Greek-key border, *minor chip, 15,9cm high*

R6 000 - 8 000

LITERATURE
cf. Jenyns, S. (1963) *MING Pottery and Porcelain*, Faber & Faber, London, figure 87A.

25



25

A Chinese Wucai brush pot, Qing Dynasty

the waisted body enamelled with a continuous scene of three attendants and a pony in a balustraded garden with scholar's rocks, *linghzi*, flowerheads and foliage, a band below enamelled in green, red and blue with *linghzi* amongst scrolling foliage, with a further band below with iron-red and green dot and flame motifs, with a bejewelled border, recessed foot, *underglaze-blue six-character Wanli mark enclosed by a double blue-line border, firing crack, 17,6cm high*

R5 000 - 7 000

26

A Chinese blue and white vase, Qing Dynasty, 18th/19th century

the ovoid body painted with two medallions, one enclosing a pair of cranes amongst waterlilies and blooms, the other with sprays of prunus and further blooms, enclosed by scrolling foliage and flowerheads, the neck with a band of eight Buddhist emblems, the sides applied with elephant-mask handles, raised on a low conforming foot, *underglaze-blue six-character Qianlong mark, 14,1cm high*

R6 000 - 8 000

26



27

Six Chinese miniature blue and white vases, Qing Dynasty, 18th/19th century

three of baluster form, each painted with sprays of flowerheads, two of double-gourd form painted with foliate sprays, and one bottle vase, painted with scrolling foliage and flowerheads, *hairline cracks, chips, the bottle vase 4,1cm high*; three Chinese blue and white vases, Qing Dynasty, 18th/19th century, one of double-gourd form painted with sprays of flowerheads and foliage, sienna-glazed rim, another baluster, painted with sprays of flowerheads and foliage, the shoulders painted with a diaper band, and a bottle vase, the lobed body painted with four maidens between sprays of flowerheads, *hairline crack, chips, the bottle vase 6,8cm high*; and a Chinese blue and white double-gourd vase, Qing Dynasty, 19th century, painted with a four-clawed dragon in pursuit of a flaming pearl amongst clouds and *ruyi*-heads, *8,3cm high* (10)

R5 000 - 7 000



27



28

Three Chinese celadon-glazed vases, Qing Dynasty, 18th/19th century

each ovoid body moulded with a lily pad, lotus leaves and further plants against a stylised wave design, the tapering neck with stiff-leaf border, the sides applied with elephant-mask handles, raised on a low foot, *underglaze two-character mark, chip, two with old collector's label, minor chips, 13,2cm high* (3)

R7 000 - 9 000



28

29

A Chinese blue and white vase, Qing Dynasty, 18th/19th century

the octagonal-shaped body painted with sprays of flowerheads above a band of stylised *ruyi*-heads, tassels and scrolls, the shoulders with four shaped panels each enclosing a flowerhead against a diaper ground, the conforming neck with stiff-leaf and *ruyi*-head borders, the sides applied with loop and moulded foliate handles, raised on a conforming foot painted with four sprays of flowerheads, *restorations, 20,6cm high*

R4 000 - 6 000



29

30

A Chinese blue and white 'lotus' bowl, Qing Dynasty, 18th century

the centre painted with a lotus bloom within a double blue-line border, the rim with double blue-line border, the reverse decorated with six lotus blooms connected by scrolling tendrils above a lappet band, raised on a low foot, *underglaze-blue four-character mark, repair to the foot, 21,5cm diameter*; and a Chinese blue and white bowl, Qing Dynasty, Kangxi period, 1662-1772, the centre painted with a stylised flowerhead enclosed by scrollwork and a double blue-line, the border painted with a diaper pattern, the reverse with eight bats, each above a *shou* symbol with a lotus bloom below alternating with panels of scrollwork, above a band of lappets enclosing flowerheads and foliage, *hairline crack, chip, underglaze-blue Chenghua mark enclosed by a double blue-line, hairline crack, 19,3cm diameter* (2)

R6 000 - 8 000



30

31

A Chinese cream-russet-and-brown marbled two-handled vase, Qing Dynasty, 19th century

the ovoid body rising to a moulded crenulated rim, the sides applied with shaped and loop handles, *black-painted character mark, 18,5cm high*

R4 000 - 6 000



31

32

A large Chinese celadon-glazed craquelure ware bowl, Qing Dynasty, 19th century

with rounded sides and rim, *traces of rust, 27cm wide*

R4 000 - 6 000



32

33

A Chinese turquoise-glazed bottle vase, Qing Dynasty, 18th/19th century

the ovoid body with elongated neck suffused with a craquelure glaze, raised on a low foot, *30cm high*

R5 000 - 7 000



33

34

A Chinese blue and white and copper-red snuff bottle, Qing Dynasty, 19th century

the cylindrical body painted with a masked figure and his horse confronting two travellers, with an attendant looking on, within a landscape with trees, the neck painted with tassels between blue-line borders, raised on a low foot, *underglaze-blue double-ring mark, lacking stopper, 8cm high*; a Chinese blue and white snuff bottle, Qing Dynasty, 19th century, the body painted with a continuous scene of a scholar and his attendant within a garden, *chip to foot rim, lacking stopper, 8,2cm high*; another, the body painted with a small boy holding a staff before a balustraded garden, *lacking stopper, 7,5cm high*; another, the tapering body painted with six five-clawed sea dragons amongst waves contesting a flaming pearl, the neck painted with *ruyis*, the base with a fisherman mark of commendation, *yellow stone stopper loose, 6cm high*; and a Chinese famille-verte snuff bottle, late 19th/early 20th century, ovoid, the body enamelled with a tree and dwellings in a balustraded garden before a river, the reverse enamelled with pine trees before a mountainscape, green stone stopper, *iron-red seal mark, iron-red character mark, 7,9cm high* (5)

R7 000 - 9 000

*This lot is not suitable for export



34

35

Four Chinese green-glazed and famille-rose pedestal dishes, Qing Dynasty, 19th century

various shapes and sizes, gilt rim, enamelled with three cranes and two bats amongst peaches, Buddhist emblems and birds amongst waterlilies and blooms, iron-red six-character Tongzhi mark, chip, the largest 17,5cm diameter (4)

R3 000 - 5 000



35

36

Three Chinese green-glazed and famille-rose pedestal dishes, Qing Dynasty, 19th century

one of petal outline, one with octagonal-shaped rim and a square example, each body enamelled with birds amongst waterlilies, goldfish amongst aquatic plants and animals, and butterflies amongst peonies and blossoms, gilt rim, iron-red six-character Tongzhi mark, minor chips, the petal-shaped example 17,4cm diameter (3)

R5 000 - 7 000



36

37

A Chinese Yixing teapot, 19th century

the baluster body moulded in high relief with sprays of prunus blossoms and bamboo enamelled in shades of yellow, green and pink, moulded bamboo handle and spout in shades of green, the cover similarly moulded with a branch-form handle, impressed four-character mark, minor chips, 14cm high; and a Chinese stoneware and enamel famille-verte teapot, Qing Dynasty, 19th century, the hexagonal body enamelled with a continuous scene of *Shou-Lao* in a garden with two further Immortals, between scroll borders, applied with bracket and string handle, enclosing a detachable metal teapot, with lotus bloom-shaped cover, hairline crack, loss to spout, 16cm high (2)

R4 000 - 6 000



37

38

A Chinese Yixing 'prunus' teapot, 19th/20th century

moulded in high relief with sprays of prunus blossom, the shaped cover similarly moulded with branch-form finial, the side applied with branch-form handle and spout, impressed six-character mark, minor chips, 9,5cm high; a Chinese Yixing teapot, 19th/20th century, the compressed globular body moulded in high relief with prunus branches, the cover similarly moulded, the side with branch-form handle and spout, impressed six-character mark, 8,5cm high; and another, the ovoid body with a band of moulded scrolls, applied loop handle moulded with *taotie* masks, the cover surmounted by a ball finial, impressed six-character mark, minor chips, 14,5cm high (3)

R8 000 - 10 000



38

39

A Chinese Yixing teapot, 19th/20th century

moulded in high relief with sprays of foliage, the cover similarly moulded and surmounted by a later compressed metal circular finial, the side applied with a branch-form handle and carved tendril spout, hairline cracks, 8,3cm high; another, the body carved with a diaper band between cloud motifs, the cover similarly carved and surmounted by a *chilong* finial, the loop handle moulded with a *chilong* and the spout with a dragon, raised on three feet, impressed four-character mark, 8,5cm high; and another, similar, chips, 8,8cm high (3)

R4 000 - 6 000



39

40

A Chinese Yixing teapot, 19th/20th century

the lobed body applied with a loop handle, moulded petal-shaped cover surmounted by a *dog-of-fo*, impressed character mark, minor chips, 9,5cm high; another, moulded with lotus petals, the cover similarly moulded, with loop handle, impressed eight-character mark, chip, 7,9cm high; another, carved with script to one side and a spray of blossoms to the other, leaf-capped handle, with moulded cover surmounted by a ball finial, impressed bird mark, 7cm high; and another, ovoid, applied with a loop handle, the cover surmounted by a ball finial, impressed four-character mark, minor chips, 6,6cm high (4)

R6 000 - 8 000



40

41

A Chinese *fahua* style enamelled vase, late 19th century

the ovoid body moulded with three butterflies amongst sprays of pomegranates, melons, chrysanthemums, peonies, flowerheads and foliage in shades of yellow, green, blue and pink against a turquoise ground, impressed Wang Bingrong seal mark, chip, hairline cracks, 21,9cm high; another, smaller, moulded with a crane amongst waterlilies in shades of green, aubergine and cream against a mirrored black-glazed ground, impressed Wang Bingrong seal mark, 12,4cm high; and another, moulded with a crane amongst waterlilies in shades of cream, brown, yellow and green against a mirrored green-glazed ground, 11,6cm high (3)

R5 000 - 7 000



41

42

A Chinese celadon-glazed jardinière, Qing Dynasty, 19th/20th century

rectangular with moulded rim, the tapering sides moulded with a pair of stylised taotie masks flanked by Greek-key pattern, raised on four bracket feet, moulded seal mark, 23,7cm wide

R4 000 - 6 000



42

43

A Chinese famille-rose jardinière, Republic period, 1912-1949

rectangular with rounded corners, one side enamelled with a small bird perched on sprays of blossoms and fruit, the other with a pheasant perched on a bamboo branch with sprays of blossoms, alternating with panels of black-painted character script and iron-red seal marks, all below a band of scrolling foliage against a turquoise ground with a pink spearhead border below, the rim enamelled with four sprays of flowerheads, raised on four bracket feet, iron-red seal mark, 23,6cm wide; and another, the octagonal body with tapering sides enamelled with four panels enclosing sprays of blossoms, a bird and foliage, interspersed with smaller similar panels, against an orange ground with gilt line work, with waisted rim, raised on bracket feet, iron-red four-character seal mark, some wear to the enamels, 20,6cm wide (2)

R5 000 - 7 000



43

44

A Chinese enamelled vase, Republic period, 1912-1949

the finely potted ovoid body painted with a warrior on horseback resplendent with iron-red tassels to the reins, an attendant bearing a standard with black character marks to his right, greeted by a young couple holding a baby before a dwelling within a balustraded garden, an older couple looking on, the reverse with black character script and iron-red seal marks, the shoulder enamelled with a ruyi-head border and diaper band, the neck similarly enamelled, the rim and foot with Greek-key lock pattern, iron-red four-character seal mark, 42,5cm high

R20 000 - 25 000



44

45

A Chinese famille-rose baluster vase, Republic period, 1912-1949

finely painted with a celebration showing figures in a dwelling observing a young girl in a garden with two attendants, a pair of Immortals to the right with a further six in a boat rowing to shore, the reverse with black-character script and three iron-red seal marks, the whole enclosed by ruyi-heads and a stylised band of geometric motifs, the shoulders with a band of flowerheads and scrollwork against a turquoise ground, the neck with various blooms and scrolling tendrils against a pink ground, the rim with a band of ruyi-heads, raised on a low foot, iron-red seal mark, 36cm high

R10 000 - 15 000

46

A Chinese enamelled bottle vase, Republic period, 1868-1912

the ovoid body finely painted with two maidens, one kneeling before a two-handled vessel, the other holding a fan, before a tree in a garden, the reverse with black enamelled inscription and red seal marks, the elongated neck enamelled with ruyi-heads and trailing tassels, the foot with Greek-key border, iron-red four-character seal mark, 22,5cm high; and a Chinese enamelled vase, Republic period, 1868-1912, the ovoid body finely painted with a scholar teaching calligraphy before a window overlooking a balustraded garden, the reverse with script and iron-red seal marks, the elongated neck enamelled with a band of ruyi-heads and tassels, the shoulders with diaper bands, iron-red four-character seal mark, minor rim chip, 20,3cm high (2)

R8 000 - 10 000



45

46



47

A Chinese celadon jade carving of an archaic form, Qing Dynasty, 18th/19th century

the front and reverse of the arrow-shaped body carved with *taotie* masks, the sides carved in relief with *chilongs*, the top carved with a snarling Buddhist lion, the stone with white and brown inclusions, 13cm high; suspended by a red tassel from a carved hardwood bamboo surround with openwork sides, set to a shaped base with raised flowerhead finial, raised on four shaped bracket feet, the stand 32cm high

R8 000 - 10 000



47

48

A Chinese carved reticulated celadon jade plaque, Ming Dynasty

oval, carved with a goose and lotus blooms before waves, later set in a 19th century oval gilt-metal covered box, the hinged cover set with pierced jade rondels, the body engraved with foliate and bamboo decoration, enclosing a fitted mirror and gilt interior, the plaque 8,5cm wide, the box 7,7cm high, 11,8cm wide

R8 000 - 10 000



48

49

A Chinese yellow jade belt hook, 18th/19th century

carved with a dragon's head terminal, its body pierced and carved in relief with a *chilong* holding a *linghzi* in its mouth, the stone in mottled shades of russet brown, 12cm long

R6 000 - 8 000



49

50

A Chinese grey jade wine cup, Qing Dynasty, 18th/19th century

the well-polished translucent stone with a lustrous sheen, veined with pale brown, carved with gently rounded sides, raised on a slightly flared circular foot, minor wear to footrim, 6cm high; a Chinese white jade wine cup, Qing Dynasty, 19th century, with slightly flared sides, raised on a low foot, the stone of semi-translucent white tone with cream and white inclusions, 4,1cm high; and two Chinese celadon and russet jade wine cups, Qing Dynasty, 19th century, each cylindrical, raised on a low foot, the stone of mottled green tone with white, brown and russet inclusions, minor chips, the taller 5,5cm high (4)

R5 000 - 7 000



50

51

Two Chinese celadon jade two-handed libation cups, Qing Dynasty, 19th century

each circular body with moulded rim applied with a pair of bracket-shaped handles, raised on a low foot, 12cm wide over handles; and ten celadon jade archer's rings, Qing Dynasty, 19th century, chips, the largest 2,5cm diameter (12)

R4 000 - 6 000



51

52

An assembled set of six Chinese celadon carved jade wine cups, Qing Dynasty, 19th century

in sizes, each of tubular form, raised on a low foot, the stones of mottled green tones with white and brown inclusions, and one of semi-translucent stone of celadon tone with white inclusions, minor chips, the tallest 5,9cm high; and two Chinese miniature celadon carved jade cups, Qing Dynasty, 19th century, in sizes, each of tubular form, the stone of mottled green tone with white inclusions, and the other of semi-translucent stone of celadon tone with white inclusions, minor chip, the taller 3,6cm high (8)

R4 000 - 6 000



52

53

A Chinese agate brush washer, Qing Dynasty, 19th century

in the form of a peach, with carved hollow well, one side carved with a leafy branch, 6,5cm high

R5 000 - 7 000

PROVENANCE

Purchased by the current owner from Christie's South Kensington in the late 1970s



53

54

A Chinese white jade brooch, Qing Dynasty, 19th/20th century

carved with a laughing Immortal, one hand holding a *ruyi* sceptre, with a bat to one side, set to a pierced silver *ruyi*-head frame, 4,7cm high; a Chinese agate figure of a small boy and fish pendant, Qing Dynasty, 19th/20th century, carved holding the russet coloured fish, with jovial expression, the reverse carved with a bloom, with ring attachment, the stone of white tone with a minor grey and russet colour inclusion, 6,9cm high; a Chinese celadon jade pendant, Qing Dynasty, 19th/20th century, carved as a tasseled fan enclosed by scrolling foliage, with ring aperture, the stone of celadon tone with mottled celadon inclusions, 5,5cm high; and a Chinese jadeite pendant, Qing Dynasty, 19th/20th century, carved and pierced with a bat amongst three peach buds, with filigree cap and ring attachment, 3,8cm high (4)

R5 000 - 7 000



54

55

A Chinese spinach jade opium bowl, Qing Dynasty, 19th century

with delicate flared rounded sides raised on a low foot, the stone of mottled green tone with white inclusions, 6,1cm diameter; a Chinese agate figure of Buddha, Qing Dynasty, 19th century, the seated laughing figure with upturned face, *fritting chips*, 5,9cm high; a Chinese amethyst figure of a *dog-of-fo*, Qing Dynasty, 19th century, carved standing, gazing over its shoulder, with raised tail, *pinhead chips*, 5,6cm high; a Chinese tiger's eye snuff bottle, late Qing Dynasty, late 19th century, oblong, carved with a spray of flowerheads, tiger's eye stopper, *chips*, 6,4cm high; a Chinese celadon jade snuff bottle, Qing Dynasty, 19th century, with flattened ovoid body, the stone of mottled green tone with russet inclusions, *lacking stopper and snuff spoon, minor chips to the rim*, 5cm high; and a Chinese jadeite archaic archer's ring, Qing Dynasty, 19th century, rounded to one side, the stone of mottled green tone with white and light brown inclusions, *chips*, 2,7cm diameter (6)

R5 000 - 7 000

*This lot is not suitable for export



55

56

A Chinese figural soapstone group, Qing Dynasty, 19th century

carved with *putei* seated beside an attendant, his sack of happiness and fan to the reverse, with three children clambering towards him, set to a carved wooden stand, the stone of mottled cream with russet, green and brown inclusions, the stone carved with cloud motifs, 10,2cm high

R3 000 - 5 000



56



57

57

A Chinese gilt-metal wedding necklace, Qing Dynasty, 19th century

composed of rectangular, tricorn and square-shaped medallions united by foliate chains to a foliate filigree headed pendant drop, the whole set with flowerheads, set to a *later* S-shaped hook, minor dents and oxidisation, *signed within a rectangular cartouche*, length approximately 440mm

R10 000 - 12 000

LITERATURE

cf. Ho, W. M. *Straits Chinese Silver. A Collector's Guide*, Singapore, 1984, fig. 58, p. 87.

58

A Chinese ivory and gold-mounted pendant, Qing Dynasty, 19th century

finely carved with two small boys and their tutor examining a peach and reading from a book with attendants, before a balustraded pavilion enclosed by flowering trees, *later* gold mount with rope-twist borders, with bale, length approximately 60mm

R8 000 - 10 000

*This lot is not suitable for export



58

59
Two rare religious-subject carved mother-of-pearl shells, Qing Dynasty, circa 1840

one carved in high relief to the exterior with a Nativity scene enclosed by the twelve Apostles, the other with the Adoration of the Magi above a plaque engraved BETHLEHEM and a pierced panel of flowerheads and scrolling foliage, each set to a velvet surround, with easel back and hanging aperture, *minor chips, the larger 19,8 by 19,3cm (2)*

R12 000 - 15 000

*This lot is not suitable for export

PROVENANCE

Stephan Welz & Co in Association with Sotheby's, Cape Town, 11 & 12 October 1999, lot 708.

LITERATURE

cf. David Howard, A Tale of Three Cities: Canton, Shanghai & Hong Kong, Sotheby's London, 1997, cat. no. 333, page 242.



59

60
A Chinese ivory figure of He Xiangyu, Qing Dynasty, 19th century

the standing figure dressed in flowing robes and cowl, with leaf decoration, her right hand holding a lotus bloom, her left a fly whisk, with serene expression, *minor chips, 21,5cm high*; and a Chinese ivory figure of Han Xiangzi, Qing Dynasty, 19th century, the standing figure dressed in flowing robes, holding a *dizi* in his hands, *21,3cm high (2)*

R6 000 - 8 000

*This lot is not suitable for export

PROVENANCE

Purchased from Stephan Welz & Co in Association with Sotheby's, Decorative Arts and Books, Cape Town, 20th & 21st January 1988, lot 481.



60

61
A Chinese cloisonné enamel bowl, Qing Dynasty, 18th/19th century

with slightly flared sides brightly enamelled with flowerheads and scrolling foliage against a black ground, enclosed by *ruyi*-head and lappet borders, raised on a low foot enamelled with red and blue flowerheads against a white ground, *dents, 9,15cm high*

R5 000 - 7 000



61

62
A pair of Chinese cloisonné yellow enamel vases, Qing Dynasty, 19th century

each baluster, enamelled with a butterfly amongst sprays of flowerheads including peonies, against a yellow ground with gilt wire diaper pattern, the neck with a band of *ruyi*-heads, gilt rim, raised on a low foot, *gilt highlights throughout, 21,4cm high*; and a Chinese cloisonné enamel bowl, Qing Dynasty, 19th century, the centre inlaid and enamelled with a pair of phoenix circling a floral spray, against a yellow ground with flowerheads and scrolling foliage, with scroll border, gilt rim, the reverse enamelled and inlaid with seven fans, each with flowerheads against a red, green, black, blue and pale blue ground, against a yellow ground with foliate sprigs, raised on a low foot, *10,8cm diameter (3)*

R5 000 - 7 000



62

63
A large Chinese inside-painted crystal snuff bottle, 20th century

ovoid, the front and reverse painted with a rooster and hen amongst flowering blooms, foliage and a rocky outcrop, with black painted Chinese script and iron-red seal marks, raised on a low foot, agate stopper, *lacking snuff spoon, minor chips to stopper, 16,4cm high*

R5 000 - 7 000



63

64
A Chinese wood and inlaid mother-of-pearl tray, Qing Dynasty, 19th century

the rectangular top inlaid with three figures before tables bearing fruit and a vessel, within a grassy landscape with trees, fruit, flowerheads, butterflies and a cloud, enclosed by a line border with scrolls to the corners, the gallery inlaid with a scene of figures in a hilly landscape with dwellings, the shaped apron inlaid with tendrils, flowerheads and a pair of butterflies, raised on four bracket feet with scroll terminals, joined by a stepped box-stretcher, *minor loss to the inlays, 9,7cm high, 33cm wide, 19cm deep*

R5 000 - 7 000



64



65
**A pair of mirror image
 Chinese hardwood figures
 of Shou Xing with deer,
 late Qing Dynasty,
 late 19th century**

each carved and pierced robed figure holding a peach in one hand and with a staff over his shoulder suspending a gourd, with longevity symbol carved to the robe, seated on a deer carved with star motifs, raised on a rocky outcrop, *minor losses*, 29cm high (2)

R5 000 - 7 000

66
**A Chinese hardwood hanging
 display cabinet, 20th century**

with glazed moulded door, enclosing stepped shelves to a fabric-lined back, the moulded base with scroll carving, 81,8cm high

R8 000 - 10 000



67
**A large Chinese hardwood stand,
 Qing Dynasty, 19th century**

the circular top with conforming aperture, raised on four carved scroll legs with upturned terminals joined by a circular stretcher, 25cm high, 36cm diameter

R8 000 - 10 000

PROVENANCE

Purchased by the current owner in the 1980s from London.



68
**A Chinese hardwood and
 burr walnut incense stand,
 Qing Dynasty, 19th century**

possibly *hongmu*, the circular top inlaid with a conforming burr walnut panel above a plain waist and shaped apron, raised on four cabriole legs with upturned foliate-carved terminals, joined by a circular pierced stretcher, raised on pad feet, *minor restoration, minor chip*, 28,5cm high, 22,3cm diameter

R8 000 - 10 000

PROVENANCE

Purchased by the current owner in the 1980s from London.



69
**A collection of six Chinese
 hardwood stands, Qing Dynasty,
 18th/19th century**

some possibly *hongmu* and *zitan*, comprising: two square examples, one surmounted by a turned pedestal, the other with pierced bat and scrolling foliage apron; three circular, one with pierced apron, one with pierced dragon stretcher raised on dragon-carved legs, with character marks to the reverse, and one of lotus form; and one rectangular, the pedestal base carved with lotus and scrolling tendrils, *minor restorations*, the largest 7cm high, 17,5cm square (6)

R6 000 - 8 000

PROVENANCE

Purchased by the current owner in the 1980s from London.





70
A collection of seventeen Chinese hardwood stands and covers, Qing Dynasty, 18th/19th century

some possibly *hongmu* and *zitan*, comprising: two folding stands; five upright stands, *in sizes*; two cross-shaped and pierced stands; two elaborately carved stands with flowerheads and foliage; and five covers, one with agate finial, one with spire-shaped finial, one with pierced fretwork, one with ribbed circular decoration, one with lobed spire-shaped finial and another with ball finial, *minor chips, the tallest upright stand 31cm high (17)*

R5 000 - 7 000

PROVENANCE
 Purchased by the current owner in the 1980s from London.



70



73

71
A collection of fourteen Chinese hardwood stands, Qing Dynasty, late 19th century

some possibly *hongmu* and *zitan*, comprising: one circular, the sides with five supports headed by a carved bird's head, with scrolling pierced apron, raised on five cabriole legs, *Purcell Collection label*; one of hexagonal form, with pierced foliate apron; four of lotus form; and eight with pierced and carved aprons, *chips, the tallest 21,8cm high (14)*

R6 000 - 8 000

PROVENANCE
 Purchased by the current owner in the 1980s from London.



71

73
A collection of Chinese hardwood stands, Qing Dynasty, 19th century

some possibly *hongmu*, comprising: two miniature covers; two miniature rectangular stands; three miniature shaped stands, *in sizes, chips, minor chips, the smallest cover 3,5cm diameter (42)*

R3 000 - 5 000

PROVENANCE
 Purchased by the current owner in the 1980s from London.



74

72
A collection of twenty-six Chinese hardwood stands, Qing Dynasty, 19th century

some possibly *hongmu* and *zitan*, comprising: a pair with carved circles to the centre and foliate-carved apron and legs; two circular; four circular with pierced apron; six of pedestal form; one square; six of unusual shape; two of tripod form; and three small examples, *minor restorations, the largest tripod stand 4,9cm high, 16cm wide (26)*

R8 000 - 10 000

PROVENANCE
 Purchased by the current owner in the 1980s from London.



72

74
Ludovico Georgio

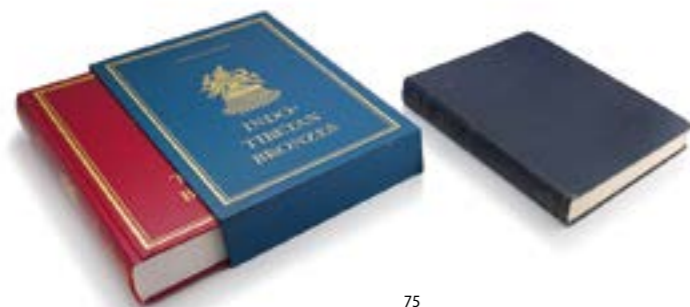
Chinae
 olim Sinarum regionis nova descriptio
 auctore Ludovico Georgio, published
 by Abraham Ortelius, 1584
 engraved map, hand-coloured,
 double-page
 37 by 47cm, framed (2)

and another, *Tartaria sive Magni
 Chami Imperium*
 38 by 50cm, framed
 both bear an LP Oudewaal, Den Haag
 retailer's label on the reverse

R10 000 - 15 000



74



75



76



77



78



79



80



81



82

75

Various Authors*Fine Arts, two*

1. Ulrich von Schroeder (1981) *Indo-Tibetan Bronzes*, Hong Kong: Visual Dharma Publications Ltd, illustrated in black and white and laid down in colour, hardcover, slipcase, copy number 286 of 500 first edition numbered copies

2. Olov R T Janse (1947) *Archaeological Research in Indo-China, Volume I*, Cambridge, Massachusetts, USA: Harvard University Press (2)

R7 000 - 9 000

76

Various Authors*Asian Art, two*

1. Albert Brockhaus (1909) *Netsuke*, Leipzig: F A Brockhaus
2. Henri L Joly (1908) *Legend in Japanese Art*, London: John Lane The Bodley Head (2)

R8 000 - 10 000**PROVENANCE**

1. Lempertz, Cologne, Auction 1179, *Asiatische Kunst*, 25.06.2021, lot 891.

77

V F Weber*"Ko-Ji Hô-Ten", two*

1. V F Weber (1965) *"Ko-Ji Hô-Ten" Tome Premier*, New York: Hacker Art Books
2. V F Weber (1965) *"Ko-Ji Hô-Ten" Tome Second*, New York: Hacker Art Books (2)

R4 000 - 6 000

78

George Lazarnick*Netsuke & Inro Artists, three*

1. George Lazarnick (1982) *Netsuke & Inro Artists, and How to Read Their Signatures, Volume I*, Honolulu: Reed Publishers
2. George Lazarnick (1982) *Netsuke & Inro Artists, and How to Read Their Signatures, Volume II*, Honolulu: Reed Publishers
3. George Lazarnick (1976) *The Signature Book of Netsuke, Inro and Ojime Artists in Photographs*, Honolulu: Reed Publishers

R8 000 - 10 000**PROVENANCE**

Purchased 28/08/87 from La Chine des Ts'ing, 13 Mutual Square, Rosebank 2196, South Africa, *Netsuke & Inro Artists Volume I & Volume II*.

79

A rare Japanese Arita blue and white charger, Edo period, 17th/18th century

Painted with a female attendant with a hand puppet entertaining two little boys in a dwelling before a river, with an attendant carrying a barrel away from the river and a little boy standing in a sampan with further barrels, the border painted with shell and scroll motifs, the whole with copper red and gilt highlights, *blue-painted mark of commendation, rivetted hairline cracks*, 41,3cm diameter

R8 000 - 10 000

80

An Arita blue and white 'Kraak' style dish, 18th century

the centre painted with a grasshopper on a rocky outcrop before a riverscape, within a shaped diaper border, the cavetto with alternating panels enclosing sunflowers and Buddhist emblems, the reverse with scrolling tendrils, raised on a low foot, *underglaze-blue six-character pseudo Chenghua mark*, 19,5cm diameter; and a Japanese Arita blue and white 'Kraak' style dish, 18th century, the centre painted with a vase of flowers within a double blue-line border, enclosed by radiating panels of sunflowers and Buddhist emblems, raised on a low foot, 20cm diameter (2)

R5 000 - 7 000

81

A Japanese seto ware umanome plate, Edo period, 19th century

circular, the centre decorated with a cream-coloured crackle glaze, the border with horse-eye pattern in brown overglaze, raised on a low unglazed foot, *chips*, 28,1cm diameter

R800 - 1 000

82

A Japanese Ko-Kutani jar, Edo period, 18th/19th century

baluster, enamelled in *gosai-de* with a continuous landscape of dwellings and trees before a waterscape with mountains in the distance, against a cream-glazed crackle ground, the shoulders enamelled with four triangular panels with flaming pearls, and another four with a diaper ground, with interlocking border, with a short neck, the recessed foot with stylised stiff-leaf border, *two-character seal mark, old collector's label*, 11,3cm high

R6 000 - 8 000



83

A Japanese Hirado ware porcelain boat, Meiji period, 1868-1912

the body painted with stylised birds in flight above crashing waves, with a scrolling diaper band above, the centre painted with Buddhist symbols, the deck moulded with an anchor and painted with a pair of phoenix in flight amongst flaming pearls, the front of the bow suspending a moulded tassel, 35,5cm long; and a Japanese Kutani mirror-glazed porcelain boat, Meiji period, 1868-1912, the sides enamelled with flowerheads and foliage amongst waves, the deck with three rondels each enclosing peony blossoms, bamboo and foliage, against a diaper ground, the bow with gilt capping, inner recessed yellow-enamelled foot, black and green two-character seal mark, minor chips, 38,4cm long (2)

R6 000 - 8 000



83

84

A Japanese blue and white vase, Meiji period, 1868-1912

the ovoid body decorated with a continuous scene of dwellings, figures and a boat before a riverscape with pine trees and mountains in the distance, raised on a short foot, signed to the base, 26,2cm high

R5 000 - 7 000



84

85

A pair of Japanese Kutani lamp bases, Meiji period, 1868-1912, with French gilt-metal mounts, A Robert, 25 Rue Drouot, Paris

each baluster body painted with finches amongst flowering blossoms, the shoulders moulded and applied with fan and tassel handles, the neck with scrolling foliage and phoenix in gilt against an orange ground, applied metal collar, raised on a pierced foliate and dragon base, on bracket feet, each lamp surmounted by a detachable and adjustable well, the burner marked Hinks & Sons Patent, with porcelain manufacturer's button, hairline crack, 55cm high (2)

R10 000 - 15 000



85

86

An Imperial Satsuma koro and cover, Meiji period, 1868-1912

the baluster body enamelled with two heart-shaped cartouches enclosing a peacock and peahen on a scholar's rock amongst peonies and prunus blossoms and a pair of birds before a balustraded garden with an abundance of flowerheads and butterflies, against a cream crackle ground, enclosed by various flowerheads, the sides applied with pierced fan-shaped handles, the shoulders enamelled with eight rondels enclosing taotie masks, minogame, shi shi, phoenix and flowerheads within shaped cartouches against a blue ground, the rim with diaper border and silver mount, the enamelled silver cover with a pierced filigree cartouche enamelled in yellow, pink, green, blue and cream with chrysanthemums, surmounted by a pierced spire-shaped finial, raised on three incorporated bracket feet enamelled with mon, mon and double signature mark, the cover with dents, restoration to the foot, 36,5cm high

R12 000 - 15 000



86

87

A Japanese tea caddy, by Juzan zei, Meiji period, 1868-1912

rectangular, each side enamelled with sparrows amongst blossoms and bamboo, maidens in conversation with little boys playing on a bridge, one standard with script mark, a dwelling before a mountainous landscape and three maidens before a pagoda in conversation with an attendant and a child amongst maple trees and foliage, all within diaper bands, the shoulder enamelled with various butterflies, with gilded neck, the cover enamelled with a phoenix amongst clouds enclosed by a diaper border raised on a low base with bracket feet, four-character Juzan sei seal mark, restoration to the cover, 12,9cm high

R6 000 - 8 000



87



88

88

A Japanese Satsuma two-handled vase, by Kinkozan zo, Meiji period, 1868-1912

baluster, the front and back enamelled with a festival, the banners with script, the reverse with entertainers before the entrance to a temple with cherry blossoms in the distance, the gilded neck moulded with shaped handles incorporating a petal-shaped panel to either side enclosing a pheasant amongst wisteria and two further birds amongst blossoms, enclosed by a gilt Greek-key border, raised on a low foot, iron-red and gilt Kinkozan zo seal mark, impressed Kinkozan zo mark, minor hairline cracks, 22,7cm high

R12 000 - 15 000



89

89

A Japanese Imperial Satsuma koro, Meiji period, 1868-1912

the body finely enamelled with two shaped cartouches, one enclosing a peacock in full display amongst flowerheads and foliage, the other a shi shi with a ball and ribbon, enclosed by brocaded panels and diaper bands, the shoulders enamelled with a flowerhead band against a white ground, the neck enamelled with butterflies, the sides applied with dragon handles, raised on three outswept feet headed by taotie masks, double impressed faint seal mark, lacking cover, minor hairline crack, 18cm high

R5 000 - 7 000



90

A Japanese black lacquer and mother-of-pearl Nanban box, 1700s

the cylindrical body inlaid with a Javanese woman in a landscape with figures before a forest, a dwelling and farm animals in the distance, with inscription *Eene Javaansche vrouns* below, the cover and base inlaid with flowerheads, *loss to the mother-of-pearl inlay, minor chips*, 14,1cm high

R4 000 - 6 000

90



91

A Japanese black, gilt and red lacquer teapot, 18th/19th century

the cylindrical body with lotus flower and scrolling tendrils, the side applied with a loop handle, fitted spout guard, the interior in red lacquer, with conforming cover, raised on three bracket feet, *chips*, 16,4cm high; and a Japanese black, gilt and red lacquer covered bowl, 18th/19th century, the ovoid body decorated with chrysanthemums amongst scrolling foliage, red lacquer interior, the conforming cover with compressed circular finial, raised on a low foot, *chips*, 9,9cm high (2)

R6 000 - 8 000

91



92

A Japanese lacquered fubako, Meiji period, 19th century

rectangular, against a *roiro* ground, decorated elaborately with peonies and scrolling tendrils, with loose cover enclosing a detachable tray, the sides applied with loop handles fitted with a cord, *loss to one side*, 12,6cm high, 41cm long, 11,5cm deep; and another, against a *roiro* ground, the loose cover decorated in varicoloured gold *hiramaki-e* with an iris and peonies issuing from a rocky outcrop with a bird and butterfly above, embellished with mother-of-pearl highlights, the interior with *nashiji*, the sides applied with loop handles fitted with cord, *minor chips*, 8,6cm high, 33,5cm long, 12,5cm deep (2)

R6 000 - 8 000

92



93

A Japanese horn and gilt-lacquered kushi comb, Meiji period, 1868-1912

carved and translucent to the top section with a rooster, hen and three birds amongst peonies and foliage, with further gilt-lacquered raised peonies and foliage, 10,4cm wide; a Japanese wood and gilt-lacquered *kushi* comb, Meiji period, 1868-1912, decorated in high relief with a *hannya noh* mask with gilt and red eyes and baton to one side, and the reverse with a spray of blossoms, 11,9cm wide; and another, moulded in high relief foliage and buds to either side, *minor loss to one corner*, 12,1cm wide (3)

R6 000 - 8 000

93



94

A small Japanese black lacquer four-case inro, Edo period, 1615-1868

of upright form, against a *roiro* ground, lacquered with an archer on horseback aiming at a target held by an attendant, the interior of *nashiji*, *signed*, with a silver *ojime* moulded with a fruiting branch with gilt highlights, all in gold and coloured *togidashi maki-e*, *signed Yoyusai to the inro*, the *ojime* with two-character mark, 5,6cm high; and a Japanese black lacquer and mother-of-pearl inlaid five-case inro, by the Kajikawa Family, Edo period, 1615-1868, of upright form, against a *roiro* ground, lacquered and inlaid with *Hotei* and his sack of happiness to the front and a bird on a branch to the reverse, the interior of *nashiji*, with silver pierced and foliate engraved *ojime* with gilt highlights, *signed Kajikawa saku with red pot seal*, the *ojime* with two-character mark, *minor chips*, 7,2cm high (2)

R8 000 - 10 000

94



95

A Japanese bronze and mixed metal two-case inro, Edo period, 1615-1868

contained within a pierced bronze outer case, one side moulded with a fierce dragon, the reverse with a tiger rubbing his back against a tree, with fretwork sides, the cover enclosing a seal compartment, the first case with extendable cased brush, the second cover with seal box, with pierced flowerhead and bead *ojime*, with pierced clam-shaped *manju netsuke*, 7,3cm high

R8 000 - 10 000

95



96

A Japanese wooden single-case inro, Meiji period, 1868-1912

broad rectangular, the front carved with the mask of *tengu* against a diaper ground, the reverse with a mask of a laughing figure, enclosed by scrollwork, with double face mask *ojime*, minor chipping, 10cm high; a Japanese wooden three-case inro, Meiji period, 1868-1912, of upright form, the front carved with *Shiba Onko* holding a piece of a large broken jar and gazing at waves against a diaper ground, the reverse with his laughing friend released from the jar amongst waves, enclosed by billowing drapes, with bronze heart-shaped *ojime*, 7,8cm high; and a Japanese wooden four-case inro, Meiji period, 1868-1912, the front carved with figures and dwellings before a riverscape, the reverse with figures, fishermen in sampans, dwellings and trees in a mountainous landscape, enclosed by a foliate-and-geometric carved border, blue melon-shaped bead *ojime*, minor chips, 7,5cm high (3)

R8 000 - 10 000

97

Four Japanese kashira, Edo period, 1615-1868

each of mixed metal and *shakudo nanako*, the first with a dragonfly, the second with an insect, the third with clouds surrounding a stylised dragon and the fourth inlaid with silver, the largest 4cm long; another, mixed metal and *shakudo nanako*, modelled as a hut, 3,5cm long; a Japanese copper *manuki*, Edo period, 1615-1868, modelled as a lobster, minor dent, 7,5cm long; a Japanese *kozuka*, Edo period, 1615-1868, mixed metal and *shakudo nanako*, unsigned, modelled with three stylised lions, split, 9,5cm long; and a Japanese opium pipe, Edo period, 1615-1868, mixed metal and *shakudo nanako*, inlaid with a *Ho ho*, 13,5cm long (8)

R4 000 - 6 000

98

A Japanese *menuki*, Edo period, 1615-1868

unsigned, mixed metal and *shakudo nanako*, modelled as a tiger, 5cm long; and a Japanese mixed metal *kanamono*, Meiji period, 1868-1912, oval, with a toad and its young holding a lantern, signed, 4cm wide, later set into an ivory plaque, with brooch fitting, 5cm wide (2)

R6 000 - 8 000

*This lot is not suitable for export

99

A Japanese iron *sukashi ko-kinko tsuba*, Muromachi period, 1336-1573

unsigned, circular, 7,5cm diameter; and a Japanese Imperial Army brass *tsuba*, 20th century, unsigned, oval, moulded to the corners with cherry blossoms, 7,2cm high (2)

R5 000 - 7 000



100

A Japanese ivory box by Tomioka, Meiji period, 1868-1912

rectangular, the cover carved with a female monkey and her infants feeding on berries and persimmons from a straw basket, signed four-character Tomioka mark, some damage, 21cm wide

R8 000 - 10 000

*This lot is not suitable for export

PROVENANCE

cf. Bonhams, London, 12 May 2011, lot 267.



100

101

A Japanese okimono of a wicker basket, Meiji period, 1868-1912

the body carved with a cover and a pair of ring and tassel handles, the detachable base carved with a woven mat with a seated demon conjuring up the head of *Mehitotsubo Yokai*, with another seated figure with raised arm looking on in distress, signed, possibly *Seiko*, the basket 3,5cm wide

R8 000 - 10 000

*This lot is not suitable for export

PROVENANCE

Purchased at Sotheby's in the early 1980s.



101

102

Five Japanese ivory carvings of animals, Meiji period, 1868-1912

comprising: a reclining tiger, its stripes stained dark and eyes inlaid, signed; a seated *shi shi* and her pup, with fierce expression, one paw on a ball; a recumbent cow, with a rope halter passing over its back, with inlaid eyes; a seated *shi shi* clutching a ball, with turned head and mouth agape, with black highlights, signed; and a wooden *shi shi* scratching its neck, with inlaid eyes and animated expression, signed, the wooden *shi shi* 5,7cm long (5)

R6 000 - 8 000

*This lot is not suitable for export



102



103

103

A Japanese ivory netsuke of a figure pushing a snowball, Meiji period, 1868-1912

the carved figure struggling to push a large snowball, his tunic incised with floral design against a diaper ground highlighted in black, *chip*, 3,5cm high; a Japanese ivory figure of a bird seller, Meiji period, 1868-1912, the jolly figure carved with one hand holding a bird cage containing a bird, his other hand outstretched and holding a bird, wearing *geta*, *signed*, *minor loss*, 4,8cm high; a Japanese ivory netsuke of a figure tending to bonsai, Meiji period, 1868-1912, the smiling figure sitting on a bench with one leg raised, pruning a bonsai tree, *signed in a red cartouche*, 4,4cm high; a Japanese ivory netsuke of a merchant on horseback, Meiji period, 1868-1912, the carved figure holding the reins, a young boy to his left holding a rope, *signed*, 5,8cm high; and a Japanese ivory reclining figure, Meiji period, 1868-1912, carved holding a fan in one hand and a bowl in the other, the tunic carved with foliate motifs, *signed*, 2,5cm high (5)

R6 000 - 8 000

*This lot is not suitable for export



104

104

A Japanese ivory okimono of a pair of rats, Meiji period, 1868-1912

realistically carved clambering over each other on a tree stump, with horn inlaid eyes, the bodies highlighted in black, *minor chip*, 9,4cm high

R5 000 - 7 000

*This lot is not suitable for export



105

105

A Japanese ivory okimono of a rice farmer, Meiji period, 1868-1912

standing, with jovial expression, one arm holding a rope with two satchels attached, the other holding a sieve, his hat carved with floral decoration, raised on an oval base, *signed in a red cartouche against a black ground*, 10,7cm high

R5 000 - 7 000

*This lot is not suitable for export

106

A Japanese wooden okimono, Meiji period, 1868-1912

carved as an elderly lady, bare-chested and sitting cross-legged mixing miso in a woven pot, her left hand resting on her knee, her right holding a pestle, 4cm high; and another, carved as an elderly lady seated on a hay bale, smoking a pipe, the trailing whisps visible to one cheek and to her tunic, the reverse carved with a spray of flowers, 5,5cm high (2)

R6 000 - 8 000



106

107

A Japanese wooden netsuke of a slumbering shojo, Meiji period, 1868-1912

the carved figure resting her head heavily in her upturned hand, with peaceful expression and long flowing hair, the outer robes with diaper decoration, her loose pants with geometric design, *signed*, *minor chip*, 3,5cm high

R8 000 - 10 000



107

108

A Japanese nut and ivory okimono of a boy and a rat, Meiji period, 1868-1912

carved with a small boy enclosed by a calabash, a rat with horn-inlaid eyes to one side, the reverse incised with foliate motifs, raised on an oval ivory base, *painted two-character mark*, 4,5cm high; a Japanese *hirado* white-glazed *hannya noh* mask, Meiji period, 1868-1912, with pierced aperture to the reverse, *minor chip*, 4,7cm high; a Japanese carved rock crystal netsuke of a peach, Meiji period, 1868-1912, the red-painted metal stopper with metal branch and cord attachment, 4,5cm long; a Japanese brass and silver tea kettle *manju* netsuke, Meiji period, 1868-1912, of spherical shape, the partially loose cover surmounted by a ball finial, the base applied with a hinged bale, 4cm high; and a Japanese walrus *manju* netsuke, Meiji period, 1868-1912, carved in the shape of shells, 4,9cm wide (5)

R7 000 - 9 000

*This lot is not suitable for export



108



109

A Japanese embroidered silk tobacco *Tabako-ire* pouch, Meiji period, 1868-1912

the bright multi-hued pouch stitched with a fierce dragon amongst clouds chasing a flaming pearl, with Mount Fuji visible to the inside, the front applied with a silver dragon and flaming pearl *kanamono*, the handle with a double row of six interlocking silver chains with a silver clasp moulded with a dragon, the *kagamibuta* netsuke with ivory bowl enclosing a plaque depicting a dragon contesting a flaming pearl, the pouch 14,1 by 9,1cm

R4 000 - 6 000

*This lot is not suitable for export



109



110

110

A Japanese *tonkotsu* and *kiseruzutsu*, Meiji period, 1868-1912

the *tonkotsu* of lacquered wood, the front with a removable carved netsuke of a mask of Daruma, with red-lacquered double *noh* mask *ojime*, the *kiseruzutsu* in the form of *Ashinaga*, the eyes inlaid with horn, standing on a trunk with both arms raised and fitted with a bamboo and brass pipe, *unsigned*, the *kiseruzutsu* 21cm high; and a Japanese *tonkotsu*, Meiji period, 1868-1912, the carved lacquered, ivory and mother-of-pearl inlaid *tonkotsu* depicting a sleeping figure holding a mushroom in his right hand, his drum to the side, the reverse with two rats, the detachable cover inlaid with an ivory scroll and mother-of-pearl beads, with a carved ivory netsuke in the form of a fruit, 8,5cm high (4)

R5 000 - 7 000

*This lot is not suitable for export

111

A Japanese bronze lamp, possibly by Mitsumoto, Meiji period, 1868-1912

the naturalistically modelled elephant standing on its back legs with front legs raised, balancing on a globe, the curled trunk fitted with a light fitting, raised on a wooden gnarled base, *three-character signature*, possibly by Mitsumoto, fitted for electricity, 56,4cm high; and a Japanese bronze figure of an elephant, Meiji period, 1868-1912, naturalistically modelled, standing four square, with curled trunk and tail, *lacking one tusk*, the other broken, *three-character mark*, 11,4cm high (2)

R8 000 - 10 000

*Strauss & Co does not guarantee electrical fittings

*This lot is not suitable for export



111

112

A Japanese bronze and cloisonné enamel koro and cover, Meiji period, circa 1860

the hexagonal body centred by a shaped panel moulded with three birds, the reverse with a bird amongst prunus, enclosed by brightly enamelled scrolling foliage and flowerheads, the sides applied with archaic handles surmounted by flowerheads, the conforming cover surmounted by a *shi shi*, raised on three archaic-style tubular bracket feet, *four-character seal mark*, 32,5cm high

R6 000 - 8 000



112

113

A pair of Japanese moriage vases, Meiji period, 1868-1912

each tapering ovoid body with elongated flared neck enamelled with yellow summer flowers and dark green foliage against a white ground, *chips, hairline cracks*, 15,5cm high (2)

R5 000 - 7 000



113

114

A Japanese cloisonné enamel silver wire koro, in the manner of the Hayashi Kodenji workshop, Meiji period, 1868-1912

in the form of an archaic bronze, worked in silver wire and various coloured enamels with two cartouches enclosing pheasants before a waterscape and finches amongst flowers and trees, the sides with smaller shaped cartouches each enclosing a phoenix, against a diaper ground, the shoulders with flowerheads and scrolling foliage against a black ground and applied with a pair of geometric-shaped handles, with silver-gilt liner, raised on three incorporated feet, *one foot damaged, lacking cover*, 20,5cm high

R15 000 - 20 000



114



115

A pair of Japanese cloisonné vases, in the style of Hayashi Kodenji, Meiji period, 1868-1912

each compressed tapering ovoid body enamelled with four alternating lappets each enclosing a phoenix and dragon joined by shaped cartouches with tasseled borders, the shoulders enamelled with flowerheads and scrolling foliage, the whole against an aventurine ground, with short neck, raised on a low foot, *minor dents*, 7,8cm high (2)

R10 000 - 12 000



115

117

A pair of Japanese cloisonné enamel vases, Meiji period, 1868-1912

tapering rectangular with rounded corners, each enamelled with a fierce dragon amongst flames against a midnight-blue ground, the elongated neck with flared rim enamelled with a diaper band, with conforming spreading foot, 18,6cm high (2)

R5 000 - 7 000



119

118

A pair of Japanese cloisonné enamel vases, Gonda Hirosuke, Meiji period, 1868-1912

finely worked in silver wire with a pair of *shijukara* Japanese tits in flight amongst cherry blossoms, with seasonal flowers including *kikyo*, Chinese bellflowers and chrysanthemums against a midnight-blue ground, the neck and foot with diaper borders, *impressed mark of Gonda Hirosuke*, 30,3cm high (2)

R15 000 - 20 000



116

116

A Japanese cloisonné enamel koro and cover, Meiji period, 1868-1912

the lobed body enamelled with rondels enclosing peonies, chrysanthemums and further flowerheads against a black ground with gilt scrollwork, the sides applied with curved shaped handles, the conforming cover surmounted by a flowerhead finial, the base enamelled with flowerheads amongst scrolling foliage enclosed by a lappet border, raised on four bracket feet, *dent*, 10cm high; a Japanese cloisonné and enamel censor and cover, Meiji period, 1868-1912, the compressed ovoid body enamelled with seven rondels enclosing various flowerheads and butterflies, with further smaller rondels, against a black ground with gilt scrollwork, the shoulders with flowerhead-and-leaf border, the pierced cover surmounted by a flowerhead finial, raised on three incorporated feet, 8,4cm high; and another, in the style of Namikawa Yasuyuki, Meiji period, 1868-1912, the body with three rondels enclosing a phoenix, butterfly and flowerheads with scrolling foliage, the shoulders with lappet border, the pierced cover surmounted by a ribbed ball finial, raised on three bracket feet, *chips, bruises*, 9,8cm high (3)

R8 000 - 10 000



117



118



121

119

A Japanese cloisonné enamel vase, Meiji period, 1868-1912

the turned baluster body enamelled with a pair of small birds amongst flowering cherry blossom branches, against a midnight-blue ground, the neck with a diaper band, raised on a low silvered foot, *dents*, 18,5cm high

R4 000 - 6 000

120

A pair of Japanese cloisonné dishes, Meiji period, 1868-1912

circular, each enamelled with a blossoming tree above sprays of flowers, enclosed by a diaper band, the border inlaid with six botchs enclosing flowerheads and a further cartouches joined by a band inlaid with diamond motifs, gilded rim, the reverse inlaid with a wave motif, raised on a low foot, 30,2cm diameter (2)

R5 000 - 7 000



120

121

A Japanese cloisonné enamel box, Meiji period, 1868-1912

rectangular, the hinged cover enamelled with a fiery dragon within a shaped panel, enclosed by brocaded, diaper, flowerheads and wave-shaped panels, with gilt-brass borders, enclosing two cranes enamelled in white within a landscape with a further three in flight above, the lower half similarly enamelled above a palework border, raised on four bracket feet, the base enamelled with a flowerhead enclosed by scrolling foliage and wave-shaped borders, gilded brass throughout, *minor chips*, 12,4cm wide

R5 000 - 7 000



122

122

A Japanese cloisonné enamel vase, Meiji period, 1868-1912

the ovoid body enamelled with peonies, flowerheads and peach blossoms above a waterscape with a butterfly above, against a brown aventurine ground, rising to a short flared neck, raised on a low foot, 15,4cm high; a Japanese cloisonné enamel vase, Meiji period, 1868-1912, ovoid, the body enamelled with flowering branches above a waterscape, against a pale mauve ground, short neck, raised on a low foot, *chips*, 17,4cm high; and a Japanese cloisonné enamel vase, Hattori Tadasaburo, Taisho period, 1912-1926, baluster, enamelled with an iris against a deep blue ground, with short neck, *signed Hattori Tadasaburo in leaf-shaped reserve*, 18,5cm high (3)

R8 000 - 10 000

VARIOUS PROPERTIES

123

A Chinese blue and white 'Kraak' dish, Ming Dynasty, Wanli period, 1573-1620

the centre decorated with a grasshopper on a rocky outcrop and a butterfly amongst peonies, scrolling foliage and flowerheads, the cavetto outlined with cell-and-diaper decoration, the border with alternating panels of auspicious symbols and sunflowers alternating with jewelled diaper bands, the reverse with loosely painted panels of fungus and dots, raised on a low foot, rim chips, 35,8cm diameter

R12 000 - 15 000



123

124

A Chinese blue and white 'Kraak' dish, Ming Dynasty, Wanli period, 1573-1620

the centre decorated with a bird perched on a rocky outcrop with sprays of flowering blooms, the cavetto outlined with cell-and-diaper decoration, the border with alternating panels of auspicious symbols and sunflowers, the reverse with loosely painted panels of fungus and dots, raised on a low foot, rim chips, 35,7cm diameter

R12 000 - 15 000



124

125

A large Chinese blue and white dish, Qianlong period, 18th century

the centre painted with a prunus tree enclosed by a double blue-line border with two sprays of prunus blossom enclosed by ruyi-heads, the cavetto painted with twelve panels each enclosing various blooms and sprays of foliage, the border with twelve similar panels enclosed by diaper bands, sienna-glazed rim, the reverse loosely painted with two sprays of foliage, rivetted hairline crack, 39,1cm diameter

R6 000 - 8 000



125

126

A bronze Buddha head fragment, Thailand, 15th/16th century

with downcast eyes and serene expression, elongated ears and partial crown, minor chipping, 12cm high, raised on a later mottled green marble pedestal, 9,8cm high

R60 000 - 80 000



126

127

A Chinese gilt-bronze of a deity, Qing Dynasty, 18th/19th century

the robed and bearded figure seated on a pierced throne, with hands clasped, holding traces of his attribute, with downcast eyes, his chest adorned with a necklace, his cuffs and borders of his robes engraved with scrollwork, his cap adorned with foliate cresting and beaded borders, dent, 32,5cm high

R15 000 - 20 000



127

128

A Chinese gilt stucco wooden figure of a deity, Qing Dynasty, 18th/19th century

the standing robed figure with clasped hands, his chest adorned with a necklace, wearing a beaded cap centred by a cloud, central beaded ribbon to his robe, lacking his attribute, restorations and some loss, 101cm high

R60 000 - 80 000



128

129

Two Chinese mother-of-pearl carved shells, Qing Dynasty, 19th century

each carved with figural scenes, one before a waterscape, the other with a figure riding a deer attended by Immortals, the standard signed, 30cm wide, each with pierced foliate- and fruit-carved wooden stand, 14,5cm high (2)

R15 000 - 20 000

*This lot is not suitable for export

PROVENANCE

TH van Stenis, Dutch Governor General to Bali in 1905, and thence by descent.



129



130

130
A Chinese flambé-glazed vase, Qing Dynasty, 19th century

the globular body with elongated tapering neck suffused in shades of deep red with purple highlights, the neck with a crackle-glazed cream ground, 34,1cm high

R8 000 - 10 000



131

131
A Chinese famille-rose Canton bottle vase, Qing Dynasty, 19th century

decorated with alternating panels of courtiers and pheasants within gilt double-line oval cartouches, enclosed by pink peonies, black and green scrollwork against a gilt ground, hairline crack, 39,5cm high

R8 000 - 10 000



132

132
A Chinese famille-rose bottle vase, Republic period, 1912-1949

decorated with three panels of figures, the first with a maiden and her attendant collecting *linghzi* before a spotted deer, the second with two boys and another covering his face with an Immortal before a rocky outcrop, the third panel with a courtier and her attendant picking flowers, the whole enclosed by *mille-fleurs*, firing fault to the base, 38,5cm high

R15 000 - 20 000



133

133
A Japanese ivory netsuke of a dog and her pups, Meiji period, 1868-1912

seated, with her paw resting on the feeding pup's back, the second pup with its head raised towards its mother's head, signed, 2,5cm high; and a Japanese ivory netsuke of a Samurai, Meiji period, 1868-1912, the standing figure holding a fan in his right hand and his left clasping the hilt of his sword, signed in an oval red lacquer seal, 5,8cm high (2)

R5 000 - 7 000

*This lot is not suitable for export



134

134
A Japanese ivory netsuke of a tiger, Meiji period, 1868-1912

carved resting on a bamboo trunk, 4cm high

R4 000 - 6 000

*This lot is not suitable for export



135

135
A Japanese Satsuma moon vase, Meiji period, 1868-1912

the ovoid body enamelled to one side with an abundance of birds including cockerels and pheasants, the reverse with various birds perched on and below a prunus tree with blooms to one side, enclosed by a gilt diaper band, the neck and shoulders enamelled with gilt flowerheads against a turquoise ground, the shoulders applied with *shi shi* and ring handles, the domed foot enamelled with *mille-fleurs* above a band of dots, iron-red seal mark and iron-red and gilt seal mark, minor chip, 24,4cm high

R12 000 - 15 000



136

136
A cased Japanese silver and silver-gilt cricket cage, late 19th/early 20th century

the pierced rounded body moulded with chrysanthemums between lappet borders, the shoulders engraved Presented to Major C.E.H. Symons C.A.V. J.P. Consul for Japan by H.I.H. Prince Komatsu Colombo May 11th 1902., enclosing a detachable cylindrical aperture, with pierced moulded chrysanthemum cover, raised on three outswept legs, dents, the fruitwood case with damage, 415g

R6 000 - 8 000

LOTS 137-140
 NO LOTS



Monday, 4 April 2022
Session 2 at 10am

Property of a Connoisseur – Part II
The David Porter Collection

Lots 141–250

Lot 220 A Dutch mahogany and walnut marquetry display cabinet,
late 19th century (detail)



141

A William and Mary walnut bureau, circa 1690

the rectangular feather-and-crossbanded top above a fall-front enclosing a well, compartments, *in sizes*, four drawers and a cupboard, a pair of short and two long graduated drawers below, on *later* bun feet, retailer's plaque *Antique Furniture from Norman Adams Ltd, 8-10 Hans Road, London, SW3, minor restorations, 96cm high, 84cm wide, 46cm deep*

R70 000 - 90 000**PROVENANCE**

Norman Adams Ltd, 8-10 Hans Road, London, SW3 1RX, purchased at the Grosvenor House Art and Antiques Fair, 18th June 1996.

142

A George I walnut and parcel-gilt mirror, circa 1720

the later rectangular bevelled plate with gilt slip and wave-shaped cresting centred by a pierced gilt rondel carved with five feathers, conforming apron, restorations, 110cm high, 60,5cm wide

R20 000 - 30 000

PROVENANCE

Norman Adams Ltd, 8-10 Hans Road, London, SW3 1RX, purchased 9 September 1992.



142

143

A Queen Anne walnut toilet mirror

the arched shaped Vauxhall bevelled plate between rectangular side supports headed by turned finials, the serpentine-shaped base fitted with three feather-banded drawers, on bun feet, restorations, 67cm high, 40,5cm wide, 21cm deep

R6 000 - 8 000

PROVENANCE

David Porter Antiques,



143

144

A Delft blue and white faience dish, 18th century

circular, with wavy rim, the centre painted with a rondel of flowering blossoms before a stylised rocky outcrop, enclosed by radiating petal-shaped panels of further flowers to a flowerhead and wavy blue border, fritting chips, underglaze-blue painted star mark, 39cm diameter

R8 000 - 10 000



144

145

Octavie Charles-Paul Seailles

FRENCH 1855-1944

Tete d'enfant

signed; inscribed with the artist's name and title on two labels adhered to the reverse
oil on cardboard
34 by 25,5cm

R4 000 - 6 000

PROVENANCE

Kurt Meissner, Zürich.

Accompanied by a copy of the original invoice.



145

146

A George I walnut and oak lowboy, circa 1715

the moulded top with rounded corners, above three frieze drawers, on turned tapering legs and pad feet, stringing throughout, restorations, 71cm high, 76cm wide, 47cm deep

R8 000 - 10 000

PROVENANCE

Donore Galleries, Price Lane, Cape Town, 1970s.



146

147

A pair of George III mahogany and upholstered side chairs

each part reeded top rail above three pierced splats, reeded side supports, stuff-over seat, on ring-turned tapering legs (2)

R6 000 - 8 000



147

148
A George III flame mahogany cabinet, circa 1770

with moulded serpentine top and sides above a frieze drawer with a cupboard below enclosing a shelf, raised on shaped bracket feet, bears retailer's plaque *Antique Furniture from Norman Adams Ltd, 8-10 Hans Road, London, SW3, 79cm high, 82,5cm wide, 42,5cm deep*

R40 000 - 60 000

PROVENANCE
 Norman Adams Ltd, 8-10 Hans Road, London SW3, purchased 22nd December 1999.



148

149
A George III mahogany drop-leaf dining table

the oval moulded top above a plain frieze, raised on six square-section tapering legs, *72,5cm high, 162,5cm wide, 160cm wide open*

R20 000 - 30 000

PROVENANCE
 David Foord-Brown Antiques, Fine English Furniture, Porcelain & Old Sheffield Plate, 3 Bank Building, High Street, Cuckfield, West Sussex, RH17 5JU, purchased 25 March 2007.



149

150
Sigmund Freudenberger

SWISS 1745-1801

The Reading of the Will

signed
 watercolour on paper
 19 by 23,5cm

R10 000 - 15 000



150

151
A George III mahogany wingback armchair, circa 1765

with upholstered back and sides, the padded open arm supports with outcurved ball terminals, close-nailed stuff-over seat, on square-section legs joined by an H-stretcher, on wooden castors

R30 000 - 40 000

PROVENANCE
 H.C. Baxter & Sons, Specialists in English Antique Furniture & Works of Art, Laughton, East Sussex, purchased 10 November 2006.



151

152
A George III mahogany breakfront bookcase, 18th century

the rectangular crossbanded top above an arrangement of adjustable shelves flanked by fluted stiles, on turned and ring-turned legs, inlaid with stringing throughout, *minor restoration, 84cm high, 138,5cm wide, 33cm deep*

R60 000 - 80 000

PROVENANCE
 HC Baxter & Sons, 53 Stewarts Grove, London SW3, purchased 30th November 1993.



152



153
**A George II walnut tallboy,
 circa 1735**

*in two parts, with moulded outset
 cornice, above an arrangement of
 graduated short and long drawers,
 the upper half with fluted pilasters,
 on bracket feet, 181cm high,
 115cm wide, 58cm deep*

R50 000 - 70 000

PROVENANCE
 David Foord-Brown Antiques,
 Fine English Furniture, Porcelain & Old
 English Plate, Olympia, 9 June 2007.

154
Manner of Theodore Gericault
 FRENCH EARLY 19TH CENTURY

Study of a Man

oil on canvas
 34,5 by 26cm

R6 000 - 8 000



154

155
German School 19th Century
Portrait of an Old Man

oil on panel
 15,5 by 12,5cm

R8 000 - 12 000



155

156
**A George III mahogany
 bureau-table, circa 1760**

*the moulded rectangular top above
 a slide with a long drawer below, the
 kneehole with a cupboard flanked
 by six graduated drawers, raised on
 bracket feet, retailer's label *Antique
 Furniture from Norman Adams Ltd,
 8-10 Hans Road, London, SW3, minor
 restoration, 84cm high, 85cm wide,
 52,3cm deep**

R40 000 - 60 000

PROVENANCE
 The Reverend John Collins,
 Vicar of Holy Trinity Church,
 Brompton, London, SW7 from
 1980-1985. The Reverend Collins
 stayed on as part of the staff at Holy
 Trinity until 1989 when he retired
 to Oxfordshire. Norman Adams
 purchased the desk from him in 1984.

Norman Adams Ltd, 8-10 Hans Road,
 London SW3, purchased
 16 November 1991.



156



157

157
Circle of John Frederick Herring, Junior

BRITISH 1820-1907

The Farmyard

signed
oil on card
21 by 31cm

R4 000 - 6 000



158

158
A George II mahogany tripod table, circa 1750

the moulded circular tilt-top above a turned tapering column on three cabriole legs, each carved with acanthus leaves centred by an oval medallion, on hairy paw feet, 71,5cm high, 88cm diameter

R20 000 - 25 000

PROVENANCE

Norman Adams Ltd, 8-10 Hans Road, London SW3
purchased on 18th November 1993.



159

159
A George III mahogany chest of drawers

the rectangular crossbanded top above a baize-lined brushing slide, four graduated drawers below, on bracket feet, 77cm high, 77,5cm wide, 44cm deep

R10 000 - 15 000

PROVENANCE

Donore Gallery, Price Lane, Cape Town.

160

Gustave Castan

SWISS 1823-1892

A Lake in the Mountains

signed
oil on panel
15,5 by 27,5cm

R10 000 - 15 000



160

161

Attributed to Eugene Boudin

FRENCH 1824-1893

Voiliers au Port

signed with the artist's initials;
with a pencil sketch of the same composition on the reverse
pencil and watercolour on paper
14,5 by 22,5cm

R8 000 - 12 000



161

162

August Speck

SWISS 1898-1977

The Chatzensee in Evening Light

signed
oil on card
14 by 29,5cm

R5 000 - 7 000

PROVENANCE

Robert Aeschbach, Zurich

Accompanied by a copy of the original invoice



162

163

Norwich School

BRITISH MID 19TH CENTURY

River with Eel Basket Traps

oil on panel
18 by 26,5cm

R2 000 - 4 000



164

French School late 19th Century

Landscape with Rocks

oil on canvas
33,5 by 25,5cm

R6 000 - 8 000

163

164



165

165

A pair of George II style walnut scones

each set to the centre with a rectangular embroidered panel with butterflies, insects amongst foliage and fruit, within a cushion moulded surround, with a book-veneered domed top, the conforming apron applied with two hinged candle arms, with drip pans, fitted with electric candle holders, 45,8cm high, 29cm wide (2)

R10 000 - 15 000

*Strauss & co does not guarantee electrical fittings



166

166

A Swiss Neo Classical fruitwood and inlaid side table

the rectangular top inlaid with ebonised geometric and foliate motifs above a frieze carved with a wave-shaped border, the side with a drawer, on stop-fluted tapering legs, on stile feet headed by a collar, 73,5cm high, 76cm wide, 43cm deep

R12 000 - 15 000

167

A Delft blue and white faience cockerel, 19th century

modelled standing on a shaped base, pseudo underglaze-blue painted initials AK, chips, 30cm high

R5 000 - 7 000

PROVENANCE
Purchased in London.



167

168

A near pair of Delft blue and white faience ewers, 19th century

each lobed ovoid body decorated with baskets of flowers and fruit between scroll and foliate borders, the shoulder with circle-and-dot band, the side applied with a loop handle similarly decorated, pseudo underglaze-blue painted initials AK, repairs, chipping, 25,5cm high (2)

R8 000 - 10 000

PROVENANCE
Purchased in London.



168

169

A Royal Copenhagen 'blue fluted plain' pattern part breakfast, dinner, tea and coffee service, 1923-1929

comprising: ten bread plates, two clam-shaped butter-dishes, six egg cups, three covered condiment dishes, twenty hors d'oeuvres plates, eleven soup plates, eighteen dinner plates, ten side plates, a soup tureen and cover, a round salad bowl, a serving bowl, six oval serving dishes, in sizes, a two-handed serving dish, two round vegetable tureens and covers, four oval two-handed vegetable tureens and covers, three sauce boats, in sizes, two sauce boats-on-stands, three leaf-shaped sauce boats, nine cake plates, six high-handed coffee cups and saucers, four leaf-shaped cake dishes with handles, in sizes, a two-handed covered sugar bowl, three milk jugs, in sizes, seven tea cups and ten saucers, a teapot and a sweet dish, the two-handed serving dish 41,2cm wide over handles (152)

R20 000 - 30 000



169

VARIOUS PROPERTIES

170

A George II silver-on-kettle stand, Peter Archambo, London, 1737

the bulbous body with hinged woven handle moulded with lion-masks and c-scrolls, the shoulders engraved with flowerheads and scrolling foliage, the hinged cover with wooden and silver flame-shaped finial, the front of the body engraved with an armorial, with fluted, beaded and shell-capped spout, raised on a circular foot, the stand with open bracket supports centred by masks, raised on c-scroll legs and shell-shaped pad feet united by a c-scroll stretcher fitted with a burner, *dents*, 32,5cm high, 1975g all in

R20 000 - 25 000



170

171

A set of George III silver assembled 'Old English & Thread' pattern flatware, Richard Crossley, William Eley & William Fearn, London, 1785-1802

comprising: twelve dinner forks and twelve knives, twelve dessert forks and twelve spoons, 1890g all in; twelve Elizabeth II silver 'Thread' pattern dinner knives, and twelve bread knives, Terry Shaverin, Sheffield, 1997 (72)

R40 000 - 60 000



171



172

172

A George III silver coffee pot, Henry Chawner, London, 1787

the shaped baluster body engraved with an armorial enclosed by Greek-key pattern, the side applied with a wooden leaf-capped handle, the hinged cover surmounted by a ball finial, raised on a shaped domed pedestal foot, the reverse engraved "The Gift of Arthur Heigham Esqu" 1787., *minor restoration*, 32,6cm high, 780g

R8 000 - 10 000



173

173

A George III silver salver, John McDonald, Edinburgh, 1800

circular, the centre engraved with initials enclosed by scrolling foliage and flowerheads, reeded rim, raised on three bun feet headed by triangular stylised leaf motifs, *dents*, 26,2cm diameter, 460g

R5 000 - 7 000

174

A George IV assembled silver three-piece tea service, The Barnards and Rebecca Eames, London, 1821-1828

comprising: a teapot, two-handed sugar bowl and milk jug, the compressed ovoid body moulded with lobed and spearhead motifs, gadrooned rim, the side applied with a leaf-capped handle, the hinged cover surmounted by a flowerhead finial, raised on four flowerhead, leaf-and-shell bracket feet, the milk jug and sugar bowl with gilt interior, *minor dents*, the teapot 14cm high, 1500g all in (3)

R15 000 - 20 000

*This lot is not suitable for export



174

175

A George IV part set of assembled silver Fiddle, Thread and Shell pattern flatware, William Eaton, Mary Chawner, William Brown, Richard Poulden, Chawner & Co, London, 1825-1871

comprising: six dinner spoons, six dinner forks, one sauce ladle, six mustard spoons, *in sizes*, six dessert forks, six dessert spoons and seven teaspoons, each with the crest of a dog and two with initials, 2430g all in; an assembled King's pattern silver flatware part service, Chawner & Co, Mary Chawner, Thomas Smily, William Eaton, Henry Stuart, James McKay, Edinburgh, London, 1830-1866, comprising: nine dinner spoons, nineteen dinner forks, three sauce ladles, a basting spoon, eighteen dessert spoons, eight dessert forks, a sugar sifter and a pair of teaspoons, 4900g all in; and five King's Husk pattern dinner spoons, Charles Boyton, London, 1851, 475g all in (105)

R60 000 - 80 000



175

176

A Victorian silver salver, William Brown & William Nathaniel Somersall, London, 1841

circular, the wavy rim moulded with c-scrolls, shells and foliage, the centre engraved with a crest and CRAIGNEZ HONTE, enclosed by further shells and sprays of flowerheads, raised on three moulded bracket and shell feet, *dents*, 24cm diameter, 630g

R8 000 - 10 000



176



177

A Victorian assembled silver 'Fiddle' pattern part flatware service, Chawner & Co, Mary Chawner, Edward Farrell, Thomas Whitaker or Thomas Whitehouse, London, 1849-1856

comprising: twenty-four dinner spoons, thirty-six dinner forks, one butter knife, three mustard spoons, one soup ladle, two basting spoons, four sauce ladles, one fish slice, twenty-four dessert forks, twenty-four dessert spoons and eighteen teaspoons, 8245g all in; and a metal-bound chest, R&S Garrard & Co, Crown Goldsmiths & Jewellers, Panton Street, Hay Market, London, 19th century, the hinged slightly domed cover enclosing paper-lined interior with three loose baize-lined trays, each with compartments in sizes, the front applied with a brass plaque inscribed Rear Admiral, The Hon^{BLE} Sir F.W. Grey, K.C.B., the sides applied with metal carrying handles, 55,5cm high, 70,5cm wide, 45,6cm deep (138)

R80 000 - 100 000

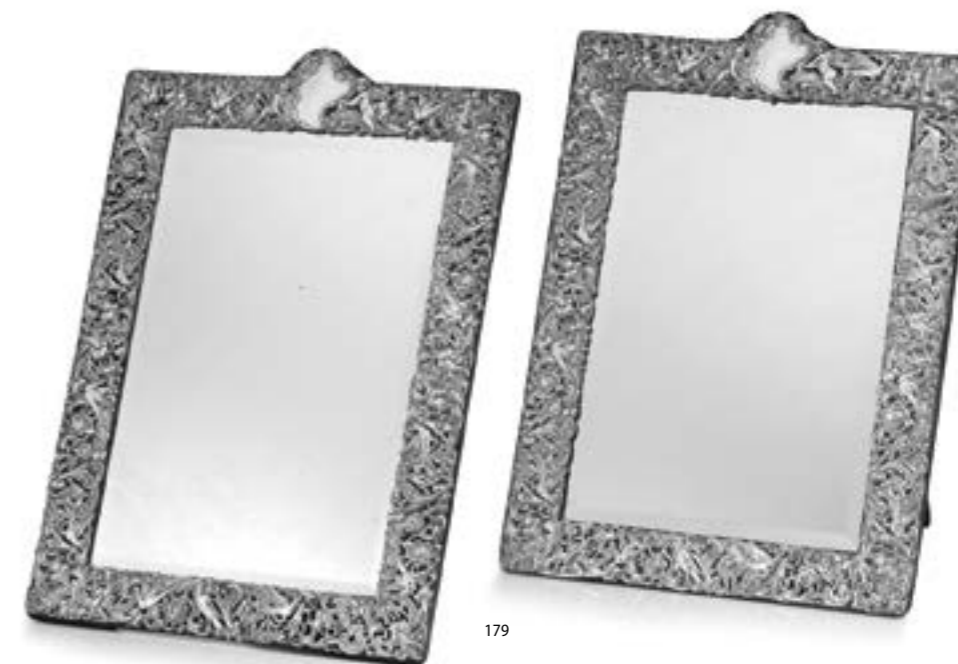


178

178 Four Victorian silver entrée dishes and covers, James Le Bas, Irish, 1868

each rectangular with moulded leaf-and-flowerhead borders centred by a crest, each cover similarly moulded and engraved with detachable branch-form handle, dents, 6730g all in (4)

R100 000 - 130 000



179

179 An impressive pair of late Victorian silver-mounted table mirrors, William Comyns & Sons Ltd, London, 1894 and 1895

each with rectangular bevelled plate, the arched cresting moulded with a scroll-and-shell vacant cartouche flanked by a pair of putti enclosed by borders of masks, birds, flowers and foliage, set to a velvet-lined easel back frame, dents, 60cm high (2)

R40 000 - 45 000

180

A Victorian silver inkstand, Barnard & Sons Ltd, London, 1868

rectangular-shaped, fitted with a pair of silver-mounted glass ink bottles flanking a covered wafer box surmounted by the figure of Diana dressed in flowing robes resting her hand on a quiver, with pen depressions, on pierced scroll feet, chips, dents, 30,2cm wide, 1345g all in

R12 000 - 15 000



180

181

A Victorian silver inkstand, Walter & John Barnard, London, 1894

rectangular-shaped with moulded rim, with pierced flowerhead and foliate three-quarter gallery, fitted with a pair of hinged silver-mounted cut-glass inkwells, engraved with a crest, with pen supports and pen depression, engraved with initials, raised on four paw feet headed by scrolling acanthus leaves, with a Hinks & Wells ink pen, Charles Asprey & George Asprey, London, 1867, retailed by Asprey, and a pencil, Charles Asprey & George Asprey, London, 1867, retailed by Asprey, *minor dents and chips, the stand*
6,4cm high, 28,5cm wide, 19,6cm deep, 910g weighable silver (3)

R12 000 - 15 000



181

182

A Victorian silver tea service, Charles Stuart Harris, London, 1895

comprising: a kettle-on-stand, a teapot, a hot water jug, a milk jug and a two-handled sugar bowl, the baluster-shaped body centred by a vacant cartouche to either side enclosed by c-scrolls and scrolling foliage, the hinged domed cover surmounted by a wooden mushroom-shaped finial, the side applied with a wooden leaf-capped handle, reeded leaf-capped spout, raised on a circular spreading foot, *restorations, dents, the hot water pot 26,5cm high, 3810g all in* (5)

R40 000 - 50 000



182

183

A pair of Victorian silver candlesticks, Harrison Brothers & Howson, Sheffield, 1898

each square stepped base moulded with swags between dot-and-line banding, rising to a tapering faceted and fluted column, surmounted by a stepped pedestal headed by an urn-shaped nozzle, the detachable sconce with reeded rim, *loaded, dents, one with restorations, 29,5cm high* (2)

R8 000 - 10 000



183

184

A pair of Victorian three-light Corinthian silver candelabra, possibly Charles Boyton, London, 19th century

each square stepped and beaded base rising to a tapering fluted column, with detachable moulded foliate branch and beaded drip-pans, the detachable central sconce raised on an upturned baluster support, each with detachable beaded nozzle, *loaded, dents, one nozzle associated, splits, 38cm high* (2)

R10 000 - 15 000



184

185

A Victorian red-glass and silver-gilt and turquoise-mounted vinaigrette scent bottle, Howell & Co, London

the ovoid body with hinged silver-gilt cover with a vacant cartouche enclosed by a beaded turquoise surround and petal-shaped border, enclosing a pierced removable scent cover and engraved *Howell & Co London*, the collar engraved with scrolls and scrolling foliage, *chip, 8,5cm high*; and another, the globular body with hinged silver-gilt cover with a vacant cartouche enclosed by flowerheads and scrolling foliage, *lacking stopper, 7,5cm high* (2)

R10 000 - 15 000



185

186

A late Victorian silver quach, possibly William Robb, Edinburgh, 1900

circular, the rim applied with three shaped handles, the body moulded with three vacant cartouches each enclosed by a pair of intertwined Celtic dragons headed by a Celtic ribbon, interspersed with moulded thistles above a band of interlocking Celtic knots, raised on a spreading reeded foot, the base engraved *ELIZABETH JOY HARRISON PENFOLD FROM E. HARRISON, EDINBURGH*, *dents, 6,1cm high, 310g*

R5 000 - 7 000



186

187

Four Edward VII silver candlesticks, Harrison Brothers & Howson, Sheffield, 1902-1903

each raised on a stepped square base, to a tapering column headed by swags and ribbons, to an urn-shaped sconce, reeded borders throughout, *loaded*, 28,5cm high (4)

R30 000 - 40 000

187



188

A cased set of six Victorian silver-gilt, seed pearl and enamel anointing spoons, Levi & Salaman, Birmingham, 1901, retailed by M. Montague, Sucesor de Julio Frank, Iquique

each bowl of *coco-de-mer* form and engraved with scrollwork and foliage against a stippled ground, each handle headed by a stylised lion-mask, the stem enamelled in green and blue with flowerheads and scrolls highlighted with seed pearls, octagonal seal-shaped terminal, *minor restoration*, 105g all in (6)

R2 000 - 3 000



188

189

An Irish silver four-piece tea service, Wakely & Wheeler, Dublin, 1927

comprising: a teapot, hot water jug, sugar bowl and milk jug, the ovoid body moulded with bosses and interlinking Celtic dragons, the hinged domed cover surmounted by a triangular wooden finial, the side applied with a leaf-capped wooden handle, raised on four hoof feet headed by Celtic knots, *dents*, the teapot 16,8cm high, 1645g all in (4)

R20 000 - 25 000



189

190

A pair of George VI silver Judaica candlesticks, A Taite & Sons Ltd, London, 1939

each octagonal base rising to a moulded knopped column, with associated detachable circular moulded lobed sconce, *loaded*, *dents*, *restorations*, 27,8cm high (2)

R7 000 - 9 000

190



191

An Elizabeth II silver four-piece tea service, Adie Brothers Ltd, Birmingham, 1959-1974

comprising: a teapot, hot water jug, milk jug and two-handed sugar bowl, baluster, the body moulded with Celtic dragons and designs interspersed with bosses, the hinged domed cover surmounted with a wooden turned finial, the side applied with a wooden leaf-capped handle, raised on a circular spreading foot, *minor dents*, the hot water pot 21,5cm high, 1925g all in (4)

R15 000 - 20 000



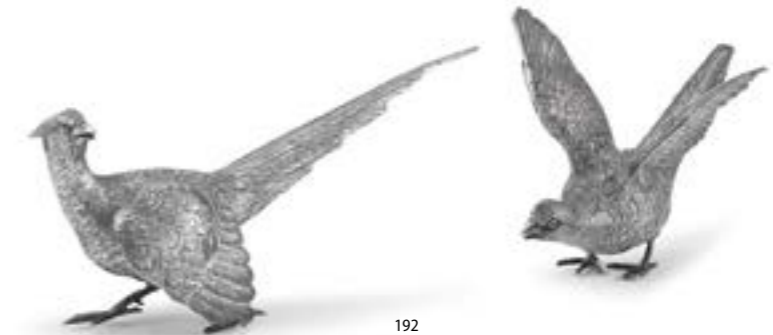
191

192

A pair of Elizabeth II silver pheasants, C J Vander Ltd, Sheffield, 1993

the male in mid stride with alert expression, the female standing with outspread wings, *minor restoration*, *minor dents*, the female 13cm high, 985g all in (2)

R10 000 - 15 000



192

David Porter (1938-2012)



On 4 April 2022 Strauss & Co will be offering furniture and paintings from the home of the late David Porter, of David Porter Antiques, in Cape Town. A renowned antique dealer for over thirty years, these represent some of the special pieces which David had selected for his own home.

Born in Cape Town before the outbreak of the Second World War, David was educated at Bishops Diocesan College and the University of Cape Town. He then joined his father, Stanley Porter, in the motor business, handling the Datsun and Nissan franchises. His passions varied from yachting and motor cars to antiques and art. However, ill health forced him to abandon some of these interests and in 1975 he opened David Porter Antiques, specializing in early Georgian furniture, silver and clocks. Numerous buying trips to London with fellow dealer and friend, Julian Adler, enabled him to establish his emporium as the destination for purchasing treasures with which to furnish a home. David was a honorary member of the South African Antique Dealers' Association (SAADA) and attended antique fairs throughout South Africa. With his astute intuition he was a regular attendee in the auction salerooms, taking up his seat in the front row so that the auctioneer could not miss the determined participation of this skilled dealer. Despite his physical disabilities he was able to

spot an alteration to a piece of furniture at ten paces and loved the hunt for pieces of quality. On first meeting, apart from being struck by David's wicked sense of humour, one was immediately inspired by his superior knowledge of the antique world. Needing larger premises, in 1981 David moved into the red brick building in Dreyer Street, Claremont, joining forces with Ralph Felbert of Donore Galleries in 1990, thereby providing a one-stop destination for collectors.

In his later life he discovered the pleasures derived from the smell of a tube of oil paint, becoming an accomplished artist and going on to have four exhibitions, his gallery lending itself as the perfect place to display his canvases. Throughout all the dealings, exhibitions and illnesses the one constant in David's life was his family. Anne, his wife of forty-eight years and two daughters, Susan and Callie, provided the backbone for this indomitable and unforgettable human being.

Although he died ten years ago, when conversing with any collector on the subject of good furniture, silver and clocks, David's name still pops up as a first point of reference for any superbly crafted piece. His enduring good taste and acute sense of what the market should be appreciating lead to a strong following by both collectors and members of the antique trade alike.

193

A Regency giltwood and églomisé overmantel mirror

the triangular pediment headed by an eagle, a pair of gilt balls suspended from its beak, above a rectangular panel set with gilt églomisé glass highlighted in black, between beaded and stiff-leaf borders, the bevelled plate flanked by moulded columns headed by covered urns with flame finials, *minor chips, 153cm high, 64,5cm wide, 7cm deep*

R30 000 - 40 000

PROVENANCE

Donore Gallery, Price Lane, Cape Town



194

A George III mahogany armchair

the shaped top rail centred by an oval medallion above a pierced splat headed by a pair of flowerheads, reeded side supports, mid-rail and downcurved arms, stuff-over seat, reeded apron, on ring-turned tapering gadrooned legs, *restoration*

R5 000 - 7 000



194

195

A George III mahogany armchair

the arched panelled curved top rail above a pair of tapering splats, reeded arm supports with foliate paterae terminals, stuff-over seat, reeded apron, on ring-turned tapering lobed legs, *restoration*

R5 000 - 7 000



195

196

A George IV mahogany and rosewood writing table

the hinged rectangular top with rounded corners above a frieze drawer and a deep faux drawer, the side with ink and pen compartment and candle slide, the opposing side with candle slide, on ring-turned tapering legs, brass cappings and castors, ebonised stringing throughout, *72,5cm high, 61cm wide open, 56cm deep*

R10 000 - 12 000

*This lot is not suitable for export



196

197

A William IV mahogany work table

the rectangular moulded top above a frieze drawer fitted with stationery compartments, the side with leather-lined writing slide, panelled sides, raised on acanthus-leaf-carved and fluted tapering legs, on cabochon-carved collars and ring-turned feet, ebonised stringing throughout, *75cm high, 55cm wide, 45,5cm deep*

R8 000 - 10 000



197

198

A George IV mahogany writing table

the moulded rectangular top inset with a gilt-tooled dark brown leather writing surface, above a pair of frieze drawers and a pair of opposing faux drawers, on square-section supports, united by an arched stretcher, on rectangular bracket supports with scroll-carved terminals, on metal castors, *75,5cm high, 105,5cm wide, 60,5cm deep*

R15 000 - 18 000



198

199

A Regency mahogany work table

the hinged crossbanded reeded top enclosing a covered compartment and opposing faux compartment, a fitted frieze drawer below, on ring-turned tapering lobed legs joined by an X-shaped stretcher, ebonised stringing throughout, *70cm high, 53,5cm wide, 45cm deep*

R7 000 - 9 000



199

200

A pair of Regency mahogany, caned and inlaid side chairs

each with five reeded splats, the top rail centred by a rectangular tablet inlaid with a foliate patera and flanked by turned urn-shaped rails, between reeded supports, caned seat, on turned tapering legs joined by an X-shaped stretcher (2)

R4 000 - 6 000



200

201

A William IV rosewood library table

the rectangular top with rounded corners above a pair of frieze drawers with bead-and-lozenge moulding, raised on tapering acanthus-leaf legs joined by a turned stretcher, gadrooned socle, raised on bracket supports with acanthus-headed paw feet, on brass castors, *73cm high, 152cm wide, 75,5cm deep*

R20 000 - 25 000



201



202

202

A Regency mahogany card table

the rectangular rosewood crossbanded beaded top with canted corners enclosing a baize-lined playing surface, above a recessed panelled apron, on a ring-turned column, moulded socle, on a quadripartite base, raised on four reeded hipped legs, on foliate brass feet and castors, 74,5cm high, 90cm wide, 40,5cm deep

R10 000 - 15 000

*This lot is not suitable for export



203

203

A set of six Regency mahogany dining chairs

each with curved panelled top rail, the mid-rail with cut brass tablet and scrollwork between reeded supports, drop-in seat, on sabre legs, numbered 1-6, restorations (6)

R5 000 - 7 000



204

204

A George III style mahogany extending triple pedestal dining table

each reeded D-end above a tapering turned column, on four reeded hipped legs, brass paw cappings and castors, 71,5cm high, 231,5cm fully extended, 115cm wide

R30 000 - 40 000

205

A Victorian mahogany three-tiered dumb waiter

each rectangular moulded shelf on carved supports, raised on Gothic carved roundels united by a ring-turned stretcher, raised on arched bracket legs, on brass castors, the mechanism faulty to the lower half, 115,5cm high fully extended, 114cm wide, 51,5cm deep

R8 000 - 10 000



205

206

A Regency coromandel and mahogany tea caddy, Fischer, 188, Strand

the hinged rectangular cover inset with a paktong plaque engraved with initials, enclosing a pair of detachable domed hinged tin-lined caddies, engraved Fischer, 188, Strand, Bramah, London lock, minor restoration, 15,5cm high, 25,5cm wide, 15,8cm deep

R5 000 - 7 000



207

207

A rosewood and brass-inlaid travelling writing box, 19th century

the hinged rectangular brass-bound top enclosing a gilt-tooled leather-lined writing surface, enclosing ink and pen compartments, the side fitted with a drawer and a pair of recessed carrying handles, minor restoration, 17cm high, 46cm wide, 25,5cm deep; on a later sapele stand, 28cm high, 47,2cm wide, 27cm deep

R4 000 - 6 000

208

A George III style mahogany canterbury, late 19th century

with four dished divisions and central carrying handle, above a frieze drawer, on square-section tapering legs with brass cappings and castors, 47cm high, 50,5cm wide, 38cm deep

R4 000 - 6 000

209

A George II style mahogany silver table

the rectangular top enclosed by a pierced gallery above a fretwork frieze, raised on a triple cluster of tapering columns united by a pierced X-shaped stretcher, pierced spandrels, on block feet, restorations, 69cm high, 78cm wide, 50cm deep

R15 000 - 20 000

209



206



208





210

210
A Regency coromandel and gilt-brass-mounted travelling book compartment, John Bagshaw & Sons, Liverpool

rectangular, with pierced hinged cover, with leather-lined interior, with spring loaded base fitted with four journals including cash account, *engraved with retailer's mark*, 13,2cm high, 21cm wide, 8,7cm deep (5)

R5 000 - 7 000

211
A Victorian rosewood, tortoiseshell and brass-mounted book stand, Asprey & Co, London

the arched back with conforming sides enclosing a shelf, on a brass plinth base, *engraved Asprey & Co, London*, 21,5cm high, 22,3cm wide, 12cm deep; a Victorian tortoiseshell and brass-mounted ink stand, rectangular, fitted with an ink bottle compartment flanked by a pair of covered stamp compartments, with pen depressions, incurved sides, raised on low feet, *engraved Asprey, London*, 11cm high, 23,5cm wide, 18,5cm deep; accompanied by *Scott's Poetical Works Vol. I and II and nine Scott's Poetical Works, Vol. 2-10* (13)

R7 000 - 9 000

*This lot is not suitable for export



211



212

212
A late Victorian tortoiseshell and brass-mounted ink stand, JC Vickery, 179, 181, 183, Regent Street, W1

rectangular, with a pair of tortoise-shell and brass-mounted glass inkwells flanking a hinged stamp compartment, with dished depression, on a spreading incurved base, raised on low feet; a travelling ink box, with sloping hinged cover, the sides applied with brass handles *in sizes*; and a photograph frame, *the ink stand 12cm high, 35cm wide, 26,5cm deep* (3)

R10 000 - 15 000

*This lot is not suitable for export

213
A Queen Anne style walnut occasional stool

the rectangular upholstered top raised on cabriole legs

R4 000 - 6 000



213

214
An Anglo-Indian ivory, coromandel and porcupine quill book carrier, 19th century

rectangular surmounted by a three-quarter gallery inlaid with ivory circles, the corners with button-shaped bosses, the front with ivory and inlaid patera, raised on two ivory and black stained bun feet, the reverse with *later* wooden bun feet, *one quill damaged*, 13,5cm high, 32,5cm wide, 19,2cm deep

R6 000 - 8 000

*This lot is not suitable for export



214

215
An Anglo-Indian ivory-overlaid sandalwood Vizagapatam needlework box, 18th/19th century

the rectangular hinged cover inset with a *later* vacant panel surrounded by delicate foliate sprays enclosed by beaded borders, fitted with twelve compartments two of which with covers, one surmounted by a needle cushion, including various sewing instruments and two cylindrical sewing boxes with covers, the inner cover fabric-lined, with conforming sides, *distress*, 8,8cm high, 28,7cm wide, 23,2cm deep

R12 000 - 15 000

*This lot is not suitable for export

PROVENANCE

Green & Hatfield, Dealers in Antiques, purchased 13 April 1935.



215

216
A Colonial hardwood armchair

the curved back support above a plain splat flanked by scroll supports, carved scroll arm supports, serpentine caned seat, on restrained cabriole legs headed by foliate motifs, *replacements and restoration*

R5 000 - 7 000



216



217



218



219

VARIOUS PROPERTIES

**217
A walnut longcase clock, Thomas Pitt,
London, mid 18th century**

the 31cm dial with silvered chapter ring with Roman hour numerals, the outer ring with Arabic minute numerals, pierced blued hands, the dial with figural and foliate spandrels, matted centre with silvered seconds dial and calendar aperture, signed *Thomas Pitt, St James's Street, London*, on a silvered boss, the arch with strike and silent wheel, flanked by dolphin and foliate spandrels, bell-striking movement, the arched hood centred by a fretwork panel, surmounted by brass spire finials, brass-capped hood pilasters, the trunk with broken arch crossbanded quarter-veneered and inlaid door, on a moulded plinth base, 234cm high

R30 000 - 40 000

*Strauss & Co recommends a service for this clock

**218
A Russian silver and cut-glass claret jug,
with Cyrillic maker's mark, 1908-1917**

the ovoid body cut with diamonds, circles, printies and linework, the silver collar with stiff-leaf moulding, the hinged domed cover with beaded border and surmounted by a pine cone finial, shell thumbpiece, the side applied with a restrained loop handle engraved 17/IV, 1916, star-cut base, silver-gilt interior, *minor chips*, 24,5cm high

R12 000 - 15 000

**219
A cased set of Austro-Hungarian silver-gilt fish forks and knives, 1886-1922, .800 standard**

comprising: twelve fish forks and twelve knives, each engraved with a crest and initials, *minor oxidation*, 650g weighable silver (24)

R6 000 - 8 000

THE DAVID PORTER COLLECTION

**220
A Dutch mahogany and walnut marquetry display cabinet, late 19th century**

in two parts, the arched cornice centred by a leaf-carved cresting above a pair of glazed doors enclosing two shelves and a silk-lined interior, a pair of panelled doors below enclosing a shelf, on bun feet, restorations, 238cm high, 170cm wide, 36,5cm deep

R25 000 - 30 000

VARIOUS PROPERTIES

**221
A Portuguese rosewood and brass-mounted writing table, 19th century**

the rectangular top inset with a gilt-tooled red leather writing surface, enclosed by a carved spiral border above three frieze drawers, the sides and reverse with faux drawers enclosed by beaded borders, raised on compressed bun turned tapering and twist-turned legs, conforming box-stretcher, united by a square block headed by plaques and pierced finials, raised on bun feet, *depository label Waring & Gillow (1932) LTD, 180 Oxford Street, Removal and Warehousing Department*, 76cm high, 152,8cm wide, 78,4cm deep

R15 000 - 20 000

*This lot is not suitable for export



220



221

222

An Italian inlaid walnut, simulated rosewood and brass inlaid secretaire cabinet, Genoa, late 18th century

in two parts, the moulded arched pediment above a pair of mirrored doors enclosing an arrangement of open compartments and a cupboard door, above a pair of candle slides, the lower section with a fall-front centred by a floral patera enclosing a quarter-veneered surface, an arrangement of five drawers, four open compartments and a mirrored cupboard door, above a pair of frieze drawers with two long drawers below, conforming sides, on square-section tapering legs with foliate sabots, the whole with interwoven ribbons headed by foliate paterae, 242cm high, 126cm wide, 60cm deep

R100 000 - 150 000



223

A silver 'Old English' pattern sugar sifter, possibly American, Ephraim Brasher

the gilt bowl with pierced c-scroll, dot, star and flowerhead decoration, the terminal engraved with initials, 110g

R1 000 - 1 200



224

A Danish silver teapot, Christian Olsen Møller, Copenhagen, 22 November - 21 December 1838

the compressed melon-shaped body below a band of moulded palmettes and a band of flowerheads, with flared neck, the loose cover surmounted by a mythical winged creature, moulded with serpent-shaped spout, the wooden leaf-capped handle headed by a Romanesque mask, raised on a moulded pedestal base with conforming borders, *minor dents*, marked with the initials LD, 945g all in

R12 000 - 15 000



THE DAVID PORTER COLLECTION

225

A Louis XVI style kingwood and brass-mounted commode, 19th century

the grey and pink mottled moulded serpentine marble top above a pair of short drawers and two long drawers, the sides inlaid with ebonised anthemions centred by a mask, wavy apron, the corners with mask and foliate mounts, raised on cloven hoof feet, *marble top repaired*, 87cm high, 118cm wide, 58,5cm deep

R25 000 - 30 000





226



227



228



229



VARIOUS PROPERTIES

226
A silver klipspringer and doe, Patrick Mavros, Harare, appears undated
 the male standing on an outcrop, the female resting below, set to indigenous Zimbabwean timber, *maker's button*, 10,2cm high
 R8 000 - 10 000

227
A silver kudu bull and doe, Patrick Mavros, Harare, appears undated
 modelled standing, set to indigenous Zimbabwean timber, *maker's button*, *pinhead dents*, 9,8cm high
 R8 000 - 10 000

228
A silver buffalo, Patrick Mavros, Harare, 1996
 modelled standing, set to indigenous Zimbabwean timber, *with maker's button*, *minor restoration*, 11cm high
 R8 000 - 10 000

229
An Elizabeth II silver cockerel, Robbie Leggat, 1995, 1/5, .925 sterling
 with red glass eyes and trailing tail feathers perched on a bronze rocky outcrop, raised on a circular mottled green-veined marble base, engraved *1/5 Robbie Leggat 1995*, *minor dents*, 24,5cm high
 R20 000 - 30 000

230
A Cape teak and stinkwood bible desk, 18th century and later
 the moulded rectangular fall-front with book support, enclosing three drawers above six open compartments, the *associated* stand with a frieze drawer, raised on upturned baluster and ring-turned legs joined by a moulded H-stretcher, 96,5cm high, 100cm wide, 71cm deep
 R80 000 - 100 000
PROVENANCE
 Jan Theron Collection, Tulbagh.
 Hazel Daphne Thompson, Kloofburg Waterfall, Outspan, Tulbagh.
 Purchased by Dr FW van der Merwe, 5 December 1958 and thence by descent to the current owner.

231

A Cape stinkwood, yellowwood and inlaid jonkmanskas, Oudtshoorn district, 19th century

the outset rectangular top with rounded corners, above a pair of frieze drawers inlaid with geometric motifs, enclosed by ribbed borders above a pair of panelled doors inlaid with star-and-diamond motifs and enclosing two shelves, with panelled sides, raised on Riversdale feet, restorations, some replacements, 175,5cm high, 161cm wide, 71cm deep

R120 000 - 150 000

PROVENANCE

Lourens and Sally Muller, Robroy, Robertson.

231



232

A Cape yellowwood, stinkwood and pine extending table, 19th century

each D-end above a reeded triangular frieze, on square-section tapering legs, with later leaf, 70cm high, 126cm wide, 171cm fully extended

R25 000 - 30 000

PROVENANCE

Dr Johannes Smuts, owner of 'Zomerlust' to his daughter Anna de Villiers, to her daughter Coosie Gray, Plasier de Merle Estate and thence by descent to the current owner.

232



233

A Cape of Good Hope Imperial brass bushel, De Grave & Co, London, 1895

engraved 'Govt. of Cape of Good Hope 1895', with turned ebonised handles, 22,4cm high, 64cm wide over handles

R250 000 - 300 000



233

234

A Cape copper saucepan and cover, Johannes Petrus van As, 19th century

circular with rolled rim, applied strapwork copper handle fittings with swing-handle, the cover with applied strap handle, raised on three flat bun feet, the cover and body stamped JP VAN AS, restoration to one handle fitting, 37,5cm high

R10 000 - 15 000

LITERATURE

cf. Marius le Roux (1982) *The Cape Copper-Smith*, Stellenbosch: Stellenbosch Museum, p. 134



234

235

A group of Victorian copper ware, 1867

comprising: six covered saucepans, in sizes, two jelly and a tureen mould, in sizes, and three frying pans, in sizes, engraved with the initials and date AM 1867, minor dents, the largest covered saucepan 53cm wide over handles (12)

R8 000 - 10 000

PROVENANCE

Property of the Estate Late Hollingworth Magniac Esq, of Colworth, Bedford, sold by auction by Messrs. Christie, Manson & Woods, July 2nd 1892 and thence by descent to the current owner.



235



236



237



240



241



238



239

236
A Danish silver vase, Christian F. Heise, Copenhagen, retailed by Møinichen, 1904-1932
 the hammered ovoid body engraved *K.D.Y. 22m2 1 Pr. 4 Aug 1916 "Tiddly-Wink." Taarboek. sejlet d. 7de August.,* the lower half moulded with wave motifs, raised on a circular foot, stamped MØINICHEN, 18,3cm high, 250g
R8 000 - 10 000

237
A Danish silver 'Margrethe' beaker, Johannes Siggaard, Copenhagen, 1932-1960
 lobed, the octagonal body moulded with bands of foliage between ribbon borders, moulded rim, raised on a petal-shaped base, stamped A.G., 12,9cm high, 425g
R4 000 - 6 000

238
A large Danish silver vase, Christian F. Heise, Copenhagen, 1904-1932, retailed by Heimbürger
 the compressed circular body moulded with foliage and fruit, hammered octagonal flared sides with moulded arched rim interspersed with moulded foliage, raised on a low pedestal foot, stamped HEIMBÜRGER, 16,5cm high, 590g
R15 000 - 20 000

239
A Danish silver bowl, Christian F. Heise, Copenhagen, 1904-1932
 circular, the beaten double lobed sides interspersed with bosses, the reverse engraved *K.D.Y. 23 Juni 1918. 22 Kvm. 2Pr., stamped Heimbürger, dent, 13,1cm diameter, 175g*
R5 000 - 7 000

240
A large Danish silver rose bowl, Christian F. Heise, Copenhagen, 1904-1932
 the circular body engraved with initials and the dates 1889-99/10-1914, the opposing side engraved *FRA COLLEGAER*, moulded with four leaf motifs centred by a blue cabochon-set stone below a moulded rim, the domed pedestal similarly moulded, raised on a circular foot, 16,6cm high, 560g
R18 000 - 24 000

241
A set of Georg Jensen silver 'Acanthus' pattern flatware, designed in 1917 by Johan Rohde, .925 sterling, 1945-
 comprising: eight bread knives, eight dinner spoons, eight fish forks and knives, eight dinner forks and knives, two serving spoons, ten cake forks, eight dessert spoons and a cake lifter, 2365g all in (69)
R70 000 - 90 000

242
A teak Bwana chair and ottoman designed in 1962 by Finn Juhl for France & Son
 each applied with retailer's label 6518078 and 6518265 respectively and impressed with retailer's monogram *MADE IN DENMARK, re-upholstered (2)*
R60 000 - 80 000



242



243

243
A René Lalique 'Bacchantes'
frosted glass vase designed
22 July 1927

engraved LALIQUE, FRANCE,
 24,5cm high

R45 000 - 50 000

LITERATURE
 Marcilhac, F. (1989) *René Lalique 1860-1945 maître-verrier analyse de l'oeuvre et catalogue raisonné*, les edition l'amateur, page 438, plate 997.



244

244
A René Lalique 'Rampillon'
opalescent, blue and
clear glass vase designed
8 March 1927

wheel-cut signature R LALIQUE,
 FRANCE, pinhead chips, 12,7cm high

R15 000 - 20 000

LITERATURE
 Marcilhac, F. (1989) *René Lalique 1860-1945 maître-verrier analyse de l'oeuvre et catalogue raisonné*, les edition l'amateur, page 437, plate 991.



245

245
A René Lalique 'Oursins
No. 2' opalescent, blue and
clear glass dish designed
in 1935

wheel-cut signature R. LALIQUE,
 FRANCE, minor rim chip, 28cm diameter

R3 000 - 4 000

LITERATURE
 Marcilhac, F. (1989) *René Lalique 1860-1945 maître-verrier analyse de l'oeuvre et catalogue raisonné*, les edition l'amateur, page 722, plate 3041.



246

246
A René Lalique 'Edelweiss'
frosted and clear glass vase
designed October 1937

wheel-cut signature R.LALIQUE,
 FRANCE, 15,5cm high

R10 000 - 15 000

LITERATURE
 Marcilhac, F. (1989) *René Lalique 1860-1945 maître-verrier analyse de l'oeuvre et catalogue raisonné*, les edition l'amateur, page 467, plate 913.



247

247
A René Lalique 'Ondines'
frosted and clear glass vase
designed 1938

acid etched signature LALIQUE,
 FRANCE, 23,8cm high

R20 000 - 25 000

LITERATURE
 Marcilhac, F. (1989) *René Lalique 1860-1945 maître-verrier analyse de l'oeuvre et catalogue raisonné*, les edition l'amateur, page 470, plate 927.



248

248
An Italian Murano blue glass
vase, 42/99, 1993

the ovoid body with a vertical
 division, one side with white net-
 like design against a turquoise
 ground, the other a deep blue,
 the opposing blue side with a
 turquoise teardrop, signed, Murano,
 1993, 42/99, 30,5cm high

R10 000 - 15 000

LOTS 249-250
 NO LOTS



Tuesday, 5 April 2022
Session 3 at 10am

Jewellery

Lots 251-330

Lot 273 Blue sapphire and diamond ring

251

**Garnet and gold necklace,
19th century**

set to the front with seven pear-shaped drops weighing approximately 5.00 carats, to a row of thirty-seven graduated collet-set garnets weighing approximately 32.70 carats, united by fine links, length approximately 390mm

R6 000 - 8 000



251

252

Ruby and gold bangle

the hinged bangle designed with a pair of contesting serpents entwined around a stylised flower, ruby-set eyes, circumference 60mm

R30 000 - 35 000



252

253

**Pair of diamond and golden
South Sea pearl earrings**

each 12.5mm golden South Sea pearl surmounted by a natural fancy intense slightly brownish yellow round brilliant-cut diamond weighing 1.365 carats and a fancy deep yellowish brown round brilliant-cut diamond weighing 1.76 carats, post and butterfly fittings, length approximately 15mm

Accompanied by report number 295076 from The Jewellery Council of South Africa stating that the diamond weighing 1.365 carats is Intense Slightly Brown Yellow Natural Fancy in colour and P² in clarity (2)

R50 000 - 55 000



253



254

255

254

**Six stone diamond and
gold necklace**

collet-set with six graduated round brilliant-cut diamonds weighing a total of approximately 2.94 carats to a fine pink gold chain, length approximately 405mm

R75 000 - 80 000



255

**French diamond, emerald
and gold bangle**

hinged, the front embellished with leaves and scrollwork accented by single-cut and round brilliant-cut diamonds and four collet-set round-cut emeralds, gold French assay marks, inner circumference 58mm

R55 000 - 58 000

256

256

**Diamond platinum and
gold ring**

claw-set with a round brilliant-cut diamond weighing 1.8310 carats, size Q½

Accompanied by report number 220210252/134832 from the European Gemological Laboratory, South Africa, stating that the diamond weighing 1.8310 carats is I in colour and SI¹ in clarity

R90 000 - 95 000



257

**Edwardian peridot,
seed-pearl and gold
brooch/pendant**

of scrolling open-work design centrally set with an emerald-cut peridot weighing approximately 1.60 carats and with seed-pearls, suspending a claw-set pear-shaped peridot drop weighing approximately 0.78 carat, to a fixed hook attachment, length approximately 45mm

R6 000 - 8 000





258



259



259



260

**258
French gold and enamelled
bird brooch, 1970s**

perched on a branch, the wings and tail with brown enamel, the crest with black enamel, the slightly turned head with a green enamel eye, *gold French assay mark and marked with the initials LK, length approximately 48mm*

R10 000 - 12 000

**259
Cartier 'Maillon Panthère'
18ct yellow gold demi-parure**

each composed of a series of five-row polished brick-links, comprising: a necklace, *signed Cartier, Number 507031, length approximately 410mm*, a bracelet, *signed Cartier, with French assay and maker's marks, Number 606243, length approximately 185mm*, and a pair of earrings with clip fittings, *signed Cartier, Number 607802, length approximately 20mm, with French assay and maker's marks, presentation cases (3)*

R180 000 - 200 000



260

261

**260
Pair of gold and blue sapphire
gentleman's cuff links,
designer E Tiessen, 1970s**

each lozenge-shaped openwork plaque of textured design and enhanced with a claw-set round-cut sapphire, to hinged batons, *length approximately 30mm (2)*

R10 000 - 15 000

**261
Italian gold and blue-
sapphire bracelet**

composed of articulated abstract and granulated links accented to the front with eighteen marquise-cut sapphires weighing approximately 2.70 carats, *length approximately 195mm*

R50 000 - 55 000



262

**262
Pair of diamond and sapphire
gold earrings and a ring,
en suite**

each designed as a flowerhead, claw-set to the centre with a cluster of seven round brilliant-cut diamonds surrounded by round-cut sapphires to rows of herringbone open wire-work, *French gold assay mark, the ring: size M½; the earrings with post fittings, length approximately 25mm (3)*

R20 000 - 25 000

**263
Italian 18ct yellow and white
gold bracelet, 1970s**

composed of a textured intertwined rope-twist chain of bi-coloured design, *length approximately 195mm*

R20 000 - 22 000



263



264

**264
Gold necklace**

designed as a series of textured semi-ellipse-shaped links, the clasp stamped AURA, length approximately 480mm

R65 000 - 70 000



265

**265
Victorian turquoise and gold bracelet**

composed of hinged frosted plaited gold links highlighted with alternating cabochon-cut turquoise and gold beads, length approximately 170mm

R15 000 - 20 000

266



267

**266
Unmounted round brilliant-cut diamond**

weighing 1.94 carats

Accompanied by two certificates: Accompanied by report number 7401719724 from the Gemological Institute of America, stating that the diamond weighing 1.94 carats is H in colour and VVS1 in clarity

Accompanied by report number SA 1065067 from the European Gemological Laboratory, stating the diamond weighing 1.94 carats is 2H in colour and VVS² in clarity

R170 000 - 190 000

**267
A pair of diamond earrings**

each claw-set with a round brilliant-cut diamond weighing 1.0920 carats and 1.0800 carats, post and butterfly fittings, length approximately 15mm

Accompanied by two certificates: Accompanied by report number 180911934/122767 from EGL South Africa stating that the round brilliant-cut diamond weighing 1.0920 carats is Intense Fancy Yellow in colour and VS² in clarity.

Accompanied by report number 170111469/113651 from EGL South Africa stating that the round brilliant-cut diamond weighing 1.0800 carats is Fancy Yellow in colour and VS² in clarity (2)

R130 000 - 140 000

268



**268
Diamond bracelet**

collet-set with round brilliant-cut diamonds weighing approximately 4.75 carats, length approximately 185mm

R50 000 - 55 000

269



**269
Single-stone diamond ring**

claw-set to the centre with a round brilliant-cut diamond weighing 2.701 carats, size M

Accompanied by two certificates: Accompanied by report number 295038 from The Jewellery Council of South Africa stating that the diamond weighing 2,701 carats is G in colour and VSI in clarity

Accompanied by report number 034707 from The Jewellery Council of South Africa stating that the diamond weighing 2,70 carats is Rare White in colour and VSI in clarity

R250 000 - 280 000



270

270
Pair of diamond earrings
each claw set with two articulated graduated round brilliant-cut diamonds weighing a total of approximately 2.48 carats, *post and buckle fittings, length approximately 15mm*
R70 000 - 75 000



271

271
Diamond ring
collet-set to the centre with a round brilliant-cut diamond weighing approximately 1.15 carats between four tapered baguette-cut diamond shoulders and accented with round brilliant-cut diamonds, *size L½*
R80 000 - 85 000



272

272
Italian diamond and gold bracelet
claw-set with forty-seven round brilliant-cut diamonds weighing approximately 4.75 carats, *length approximately 180mm*
R40 000 - 45 000



273

273
Blue sapphire and diamond ring
centring on a mixed-cut cushion-shaped blue sapphire weighing 5.58 carats, to a mount accented with fourteen round brilliant-cut diamonds, *size P½*

Accompanied by a Coloured Stone Certificate number 4016 from Independent Coloured Stones Laboratory stating that the mixed-cut cushion shaped Cambodian type Natural Sapphire weighing 5.58 carats has no indications seen of either heat treatment or chemical diffusion treatment, 14 February 1992
R140 000 - 150 000

274
Lady's 18ct yellow gold wristwatch, Chopard, Ref. 1132712

quartz movement, curved rectangular with pink mother-of-pearl dial, Roman numerals, seconds dial at VI, gold hands, back case secured by eight screws, Chopard crown, black crocodile leather Chopard strap with 18ct yellow gold Chopard buckle, *signed dial, back, movement, engraved serial numbers 12/7228, 1132712, 5302, strap length approximately 210mm, bezel width approximately 25mm, with cardboard presentation case, Chopard Certificate of Origin, 1st June 2010*

R20 000 - 30 000

Strauss & Co does not guarantee the workings of this watch and recommends a service.



275

275
Ruby, diamond and gold novelty buckle ring

designed as a belt, the hinged buckle set with rubies and four old-cut diamonds, set to an articulated brick-link chain and ruby-set terminal, *length approximately 82mm*

R6 000 - 8 000



276

276
Pair of mabé and diamond earrings

each iridescent grey, blue and purple pearl measuring approximately 18mm enhanced by round brilliant-cut diamonds weighing a total of approximately 0.90 carat, *post and buckle fittings, width approximately 20mm (2)*

R18 000 - 20 000



277

277
Three-stone diamond ring

claw-set to the centre with a cut triangle-shaped diamond weighing 1.356 carats accented by two tapered baguette-cut diamonds, *size M½*

Accompanied by report number 295039 from The Jewellery Council of South Africa stating that the diamond weighing 1.356 carats is H in colour and SI2 in clarity

R24 000 - 26 000



278

278
Diamond brooch

designed a spray heightened with pavé-set single-cut diamond ribbons and knife-edged bars claw-set with graduated round brilliant-cut diamonds weighing a total of approximately 1.73 carats, *one diamond missing, length approximately 58mm*

R18 000 - 20 000

274





279

279
Diamond brooch, 1960s
 designed as ribbons embellished throughout with lines of old, eight-cut and round brilliant-cut diamonds weighing approximately 2.60 carats, centring a claw-set baguette-cut diamond weighing 0.8780 carat, flanked by two smaller baguette-cut diamonds, width approximately 50mm

Accompanied by report number 200210010/128890 from E.G.L. South Africa, stating that the diamond weighing 0.8780 carat is I in colour and SI¹ in clarity

R35 000 - 40 000



280

280
Diamond and gold necklace
 the front set with a ribbon enhanced by ten round brilliant- and old-cut diamonds to a finely textured herringbone chain, bolt clasp, length approximately 430mm
R18 000 - 20 000



281

281
Diamond ring
 claw-set to the centre with a cut heart-shaped diamond weighing 1.410 carats, the shoulders pavé-set with fourteen round brilliant-cut diamonds, size M
Accompanied by report number 458838 from The Jewellery Council of South Africa stating that the diamond weighing 1.410 carats is H in colour and SI² in clarity
R50 000 - 55 000

282
Diamond bar brooch

millegrain-set with thirteen old European-cut diamonds weighing a total of approximately 0.58 carat, width approximately 43mm

R5 000 - 7 000

282



283
Diamond and platinum bar brooch

millegrain-set with eight old-cut diamonds, width approximately 40mm

R10 000 - 15 000

283



284
Opal, diamond and gold bangle

claw-set to the front with nine graduated oval cabochon-cut opals weighing a total of 5.00 carats accented with round brilliant-cut diamonds to tapering bamboo-style borders, inner diameter 58mm

R25 000 - 30 000

284



285
Kunzite and diamond dress ring

claw-set to the front with an emerald-cut kunzite weighing approximately 19.13 carats enclosed by a textured scroll and enhanced by three round brilliant-cut diamonds, size J

R8 000 - 10 000

285



286
9ct yellow gold cigar cutter, maker's mark indistinct, London, 1975

of textured hexagonal outline fitted to one side with a sliding guillotine-shaped blade, applied with suspension loop, width approximately 37mm

R6 000 - 8 000

286





287



291



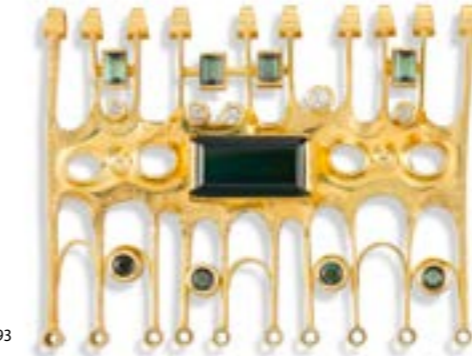
292



288



289



293



294



290

287
Three stone cabochon-cut garnet and gold brooch, Erich Frey (1917-2004)
 collet-set to the front with three oval-shaped cabochon-cut garnets weighing approximately 7.00 carats to an openwork abstract frame, *maker's marks*, width approximately 52mm
R5 000 - 7 000

288
Emerald, diamond and gold ring Erich Frey (1917-2004)
 claw-set to the centre with an emerald-cut emerald weighing approximately 0.70 carat, and a collet-set round brilliant-cut diamond weighing approximately 0.44 carat, to a square-shaped shank, *maker's mark*, size J½
R20 000 - 22 000

289
Diamond and gold ring, Franz Huppertz (1940-1997)
 of hexagonal form, collet-set to the centre with a princess-cut diamond weighing approximately 1.02 carats, to a triangle pavé-set with round brilliant-cut diamonds, to bi-furcated shoulders and square-shaped shank, *size K*
R15 000 - 18 000

290
Diamond and gold ring, Erich Frey (1917-2004)
 set to the centre with a collet-set marquise-cut diamond, weighing approximately 0.70 carat between navette-shaped shoulders, to a square-shaped shank, *maker's marks*, size J½
R9 000 - 12 000

291
Pair of tourmaline and gold cufflinks, Franz Huppertz (1940-1997)
 rectangular, each set to the front with a collet-set square-stepped green tourmaline weighing a total of 2.20 carats, the diagonal applied with three graduated lines, *maker's marks*, length approximately 30mm (2)
R6 000 - 8 000

292
Three stone diamond ring, Erich Frey (1917-2004)
 of abstract form, collet-set to the centre with a round brilliant-cut fancy intense orangish brown diamond weighing approximately 0.75 carat, accented by two round brilliant-cut diamonds weighing approximately 0.50 carat, to a square-shaped shank, *maker's marks*, size K½
R25 000 - 30 000

293
Tourmaline, diamond and gold brooch, Erich Frey (1917-2004)
 rectangular abstract, set to the centre with a rectangular-cut green tourmaline weighing approximately 5.00 carats, the arches collet-set with eight baquette and round-cut green tourmalines, highlighted with round brilliant-cut and old European-cut diamonds weighing a total of 0.25 carat, *maker's marks*, width approximately 58mm
R15 000 - 20 000

294
Gold signet ring, Erich Frey (1917-2004)
 oval, the matrix cast with a figure of Apollo to tapering shoulders and a square-shaped shank, *maker's marks*, size T
This ring was a collaboration of like minds between the current owner and the artist Alexis Preller (1911-1975), a life-time friend, and was presented to her husband on a special occasion
R25 000 - 30 000

295

Pair of lapis lazuli and silver cufflinks, 925 standard, Erich Frey (1917-2004)

textured rectangular, the sides enhanced with tablets of lapis lazuli, *maker's marks*, length approximately 25mm (2)

R2 000 - 2 500



296

Lapis lazuli, ivory and gold pendant, Erich Frey (1917-2004)

of abstract form, set to the centre with a round-cut lapis lazuli plaque accented by an ivory and gold surround, to a knife-edge bar and ribbed surmount, fixed circular hoop, *maker's marks*, length approximately 48mm; with an Italian gold box chain, length approximately 375mm (2)

R6 000 - 8 000



297

Moonstone and gold brooch

of abstract outline, terminating in an oval cabochon-cut moonstone weighing approximately 2.00 carats, length approximately 78mm

R5 000 - 8 000



298

Diamond and gold ring, Erich Frey (1917-2004)

collet-set with a pear-shaped diamond weighing approximately 0.50 carat, to an opposing triangular-shaped shoulder and square-shaped shank, *maker's marks*, size J

R10 000 - 12 000



299

Diamond and three-gold ring, Erich Frey (1917-2004)

composed of three tri-gold squares united by a bale, suspending a pear-shaped diamond weighing approximately 0.50 carat, size B½

R8 000 - 10 000



296



299

300

Tourmaline, diamond and gold enhancer

collet-set to the centre with a step-cut cushion-shaped tourmaline weighing approximately 7,50 carats accented by claw-set round brilliant-cut diamonds, to a hinged bale, length approximately 30mm; and a pair of tourmaline, diamond and gold earrings, each collet-set with a square cushion-shaped tourmaline weighing a total weight of approximately 2,50 carats embellished with round brilliant-cut diamonds, *post and butterfly fittings*, length approximately 17mm (3)

R20 000 - 30 000



302

Italian diamond and gold pendant/necklace

designed with three graduated diamond-set circles set with round brilliant-cut diamonds weighing a total of 1.86 carats, articulated diamond-set bale, with a 18ct white gold double fine chain, with lobster clasp, length approximately 450m

R30 000 - 35 000

302



303

Aquamarine and gold ring

centrally collet-set with an oval-cut aquamarine weighing approximately 2.50 carats, to a tapering frosted white gold band, size P½

R15 000 - 18 000



304

Gentleman's stainless steel Rolex Oyster Perpetual Datejust wristwatch, Ref 126200

automatic chronomètre jewelled nickel lever movement, blue dial, applied baton numerals and luminous dot markers, luminous hour hand, magnified date aperture at 3 o'clock, milled bezel, Rolex President bracelet and folding clasp, dial, movement and bracelet *signed*, diameter 36mm; with Rolex presentation case, booklet, suede pouch, outer cardboard presentation case

R50 000 - 60 000



LOTS 305-330
NO LOTS

