

Strauss & Co

VIRTUAL LIVE AUCTION – SUNDAY, 3 APRIL 2022, 10 AM





Strauss&co

Sunday, 3 April 2022 at 10 am

Crystallum Wines, Newton Johnson Vineyards and Storm Wines

A trio of prestigious Hemel & Aarde Valley producers
with a focus on Chardonnay and Pinot Noir

Lots 1–103



Crystallum Wines, Newton Johnson Vineyards and Storm Wines

The Hemel-en-Aarde region near Hermanus is South Africa's best example of regional focus in wine. Specialising in the production of fine Chardonnay and Pinot Noir, this picturesque valley in Walker Bay is now firmly established as a top address outside of Burgundy. Wines have been produced here since the early 1980's, but the last decade has boomed with new wine producing techniques, clonal selection, new players and collective focus. All contributing to finer wines and further international recognition.

Southerly located, with close proximity to the Atlantic Ocean, the Hemel-en-Aarde is one of the coolest, most maritime wine producing areas in the country. The marginal climate, together with the clay-rich soils are perfect for the tricky Pinot Noir variety and also produce incredible, classically styled Chardonnays.

In Decanter's *'Top New World Pinot Noirs'* February 2020 edition, Crystallum Cuvée Cinema 2018 received 98/100 points and was placed first. Second was Newton Johnson Seadragon 2017 with 97/100. All three producers are rated as *'First Growths'* in the Tim Atkin Report.

The Hemel-en-Aarde has further been divided into 3 distinctive wine appellations (or wards), each showcasing their own unique characteristics in the wines produced.

HEMEL-EN-AARDE VALLEY

Ancient and marginal, iron and clay-rich soil are found in the pioneering Hemel-en-Aarde Valley appellation made famous by Hamilton Russell and Bouchard Finlayson. Climatically moderated by unusually close proximity to the cold South Atlantic, expressions of site and soil produce a muscularity and structure, which has them often confused with the great wines of Burgundy. The wines achieve a rare balance between red fruits, fine aromatics, dark spice and savouriness. The sophisticated styling is furthermore built for ageing.

UPPER HEMEL-EN-AARDE VALLEY

Meandering up the R320, Pinot Noir and Chardonnay is prolific in the porphyritic Granite soils of the Upper Hemel-en-Aarde Valley. This appellation ranges from 4 to 8 km in proximity to the Atlantic Ocean. The climate is cool and temperate, where parallel mountain ranges channel the southerly ocean-going winds through the appellation during the summer. These southerly winds in turn create regular sea mists and overcast conditions, moderating the temperatures in the upper valley.

The Upper region produces a lighter, more ethereal Pinot Noir, with fine fruits and perfumes that are deep and often haunting. A varying degree of bass tones, earthiness and spice add further complexity.

HEMEL-EN-AARDE RIDGE

The elevation of the vineyards in the Hemel-en-Aarde Ridge, together with slightly more continental climate, again, produces a different style of Pinot Noir. Here the 450million-year-old clay derived Bokkeveld shale contributes to the structure and poise of the wines. With aromatics similar to the Upper, the wines are darker and more powerful with the magical depth that only Pinot Noir can offer.



CRYSTALLUM

Based in the Walker Bay region of South Africa, Crystallum is run by brothers Peter-Allan and Andrew Finlayson, 3rd-generation winemakers who focus on Burgundy varieties. Within only a little over 15 years (interestingly the first vintage was a singular Sauvignon in 2007!) this outfit has positioned itself as one of the top proponents of Pinot Noir and Chardonnay in South Africa. Awards locally and internationally are in fact unrivalled, and the wines are sold out every year on release.

Lot 5 & 6 – Crystallum *Clays Shales Chardonnay*, 2016 (6 x 750ml)

Low – High Estimate: R6000 – R8000

‘Lots of lasting vibrancy on the nose that is intact and complex. Lemon, flint, salted butter. The palate has a sweet core of fruit – generous, creamy and superbly balanced. Lots of further life and promise to this, although it’s gorgeous now.’

– **Higgo Jacobs (Feb 2022)**

‘One of a number of outstanding Chardonnays produced on the Hemel en Aarde Ridge, albeit from youngish vines, this foudre-aged white is a revelation in 2016. Rich, spicy and compact, showing understated oak, some baking spices and impressive palate length. 2018-25.’

–**Tim Atkin MW, SA Special Report 2017, 96/100**

Lot 19 & 20 – Crystallum *Cuvée Cinéma Pinot Noir* 2018 (6 x 750ml)

Low – High Estimate: R7000 – R10 000

In a October 2019 Decanter panel tasting of New World, single-vineyard Pinots, the 2018 Crystallum Cuvée Cinéma came out on top with 98 points. Out of

the 100 wines tasted, it was the only wine to be rated ‘exceptional’.

The Decanter judges say that for them, ‘a single vineyard is the New World version of a climat in Burgundy’ and singled out Hemel-en-Aarde and Elgin for producing ‘consistently high quality’ wines. This wonderful, finely-crafted Pinot best expresses Peter-Allan Finlayson’s vision and is firmly ensconced as one of SA’s best. The 2018 has attractive, rich notes over earthy complexity and a sumptuous, sensual palate.

Lot 29 & 30 – Crystallum *Whole Bunch Pinot Noir* 2016 (6 x 750ml)

Low – High Estimate: R6000 – R9000

‘Juicy and vibrant expression, showing the whole bunch flavours in a spicy, pure, bright and chewy way. Impressively sprightly after 6 years, the Whole Bunch is no longer being produced, and makes for a great addition to the collection.’

– **Higgo Jacobs (Feb 2022)**

‘A wine that does what it says on the label, this is the first release of this Pinot from the same vineyard as Cuvée Cinéma, fermented with 100% whole bunches. Dense, smoky and quite grippy, it’s something of a geek’s wine, with lapsang souchong notes and savoury tannins. 2019-24.’ - Tim Atkin MW, SA Special Report 2017, 93/100






NEWTON JOHNSON
Family Vineyards

Based in the Upper Hemel-en-Aarde Valley, it is a family affair at Newton Johnson. Started by Cape Wine Master, Dave and his wife, Felicity, sons Bevan and Gordon took over the reins in the mid-2000s, joined today by Gordon's wife Nadia. Today Newton Johnson is world-famous for their fine Chardonnays and Pinot Noir. Along with multiple accolades, the Pinot Noir has one of the longest consecutive Platter 5 Stars in history.

**Lot 49, 50 & 51 –Newton Johnson Family Vineyards
Chardonnay 2017 (6 x 750ml)**

Low – High Estimate: R6000 – R8000

‘From 3 granite vineyards, different aspects, giving 2017 its layers. Wild ferment (as all), barrelled 11 months adds oatmeal biscuit shading to brightly fresh citrus/ stonefruit. Lots going on, held together by resonating acidity, for edge, vitality, great length.’

– Platter’s SA Wine Guide 2019, 4.5* (94/100)

‘Three sites on the farm - two facing north, the other south - supply the fruit for this consistently impressive Chardonnay. Full malolactic gives the wine good weight and texture, complemented by toasty oak, baking spice flavours and pithy freshness. 2019-25.’

– Tim Atkin MW, SA Special Report 2018, 94/100

**Lot 56 & 57 – Newton Johnson Family Vineyards Pinot
Noir 2015 (6 x 750ml)**

Low – High Estimate: R7000 – R10000

‘Maintains a uniquely remarkable record of five star ratings - it’s never failed. If Mrs M needs some muscle

and Windansea some finesse, and Block 6 perhaps a brush of both, the masterly 2015 blend transcends the three sites in triumph! Pure fruit integrated with succulent acidity, understated tannins and sensitive oaking in an elegant composition. Powerful yet demure.’

– Platter’s SA Wine Guide 2017, 5*

‘A combination of Windansea (50%), Mrs M (30%) and Block 6 (20%), this is always more than the sum of its parts, a brilliant expression of the Upper Hemel-en-Aarde Valley. Floral, complex and well balanced, with some clover spice from 20% whole bunches, sweet red berry fruit and a long, savoury, complex finish.’

– Tim Atkin MW, SA Special Report 2016, 96/100

**Lot 65 – Newton Johnson Family Vineyards
Windansea 2012 (6 x 760ml)**

Low – High Estimate: R9000 – R12 000

‘Our prestigious Red Wine of the Year, rich, fragrant, warmly sensuous 12 has particularly impressive structure (notably a succulent, mineral acidity) supporting the spicy red & black berry fruit. Lively, long-lingering; very satisfying.’

– Platter’s SA Wine Guide 2014, 5*

Storm Wines

After working 12 vintages in the Hemel-en-Aarde Valley as winemaker at Hamilton Russell Vineyards, Hannes Storm discovered 2 tiny parcels of land with particularly exceptional terroirs and planted them with Pinot Noir in 2008. 2012 saw the maiden vintage being released and was produced from low-vigour, stony, clay-rich Bokkeveld ('Buck Veld') shale soil in the Valley ward. Hannes is now the only producer of Pinot Noir from each of the three appellations in the Hemel-en-Aarde and the Vrede is widely regarded as SA's benchmark. Just 350 cases were produced, and it offers fine aging potential.

Vrede Chardonnay 2017, Ridge 2015, Vrede 2017

Lot 76 – Storm Wines *Vrede Chardonnay 2017* (6 x 750ml)

Low – High Estimate: R6000 – R8000

'Salted limes, marmalade, buttered rye, lanolin and river pebbles. The palate has subtle flinty notes adding complexity to the matured citrus, with persistent acidity lifting the creamy mouthfeel. Complete, classy, and ready to be enjoyed.'

– Higgs Jacobs (Feb 2022)

'Acid levels were high in 2017 - partly because of diurnal variation - so Hannes Storm put this through 80% malolactic. Naturally fermented, it's a focused, subtle, toasty Chardonnay with good viscosity and noticeable freshness and zip. 2019-23.'

- Tim Atkin MW, SA Special Report 2018, 94/100

Lot 87 – Storm Wines *Vrede Pinot Noir 2017* (6 x 750ml)

Low – High Estimate: R7000 – R9000

'A subtle touch of oak gently perched on top of juicy strawberry and cherry fruit, waiting to integrate. Finesse and complexity on the classy 2017 that has layers of flavour unfolding in the glass. The 2017 is getting better, patience will be awarded.'

– Higgs Jacobs (Feb 2022)

'Very pale ruby. Marked, bright fruit and floral aromatics, yet with a savoury, spice and flint undertow. Juicy, vibrant and delicate yet structured. Lovely length.'

– Tim Jackson MW, JancisRobinson.com, 17.5/20 (Dec 2019)

Lot 97 & 98 – Storm Wines *Ridge Pinot Noir 2015* (3 x 750ml)

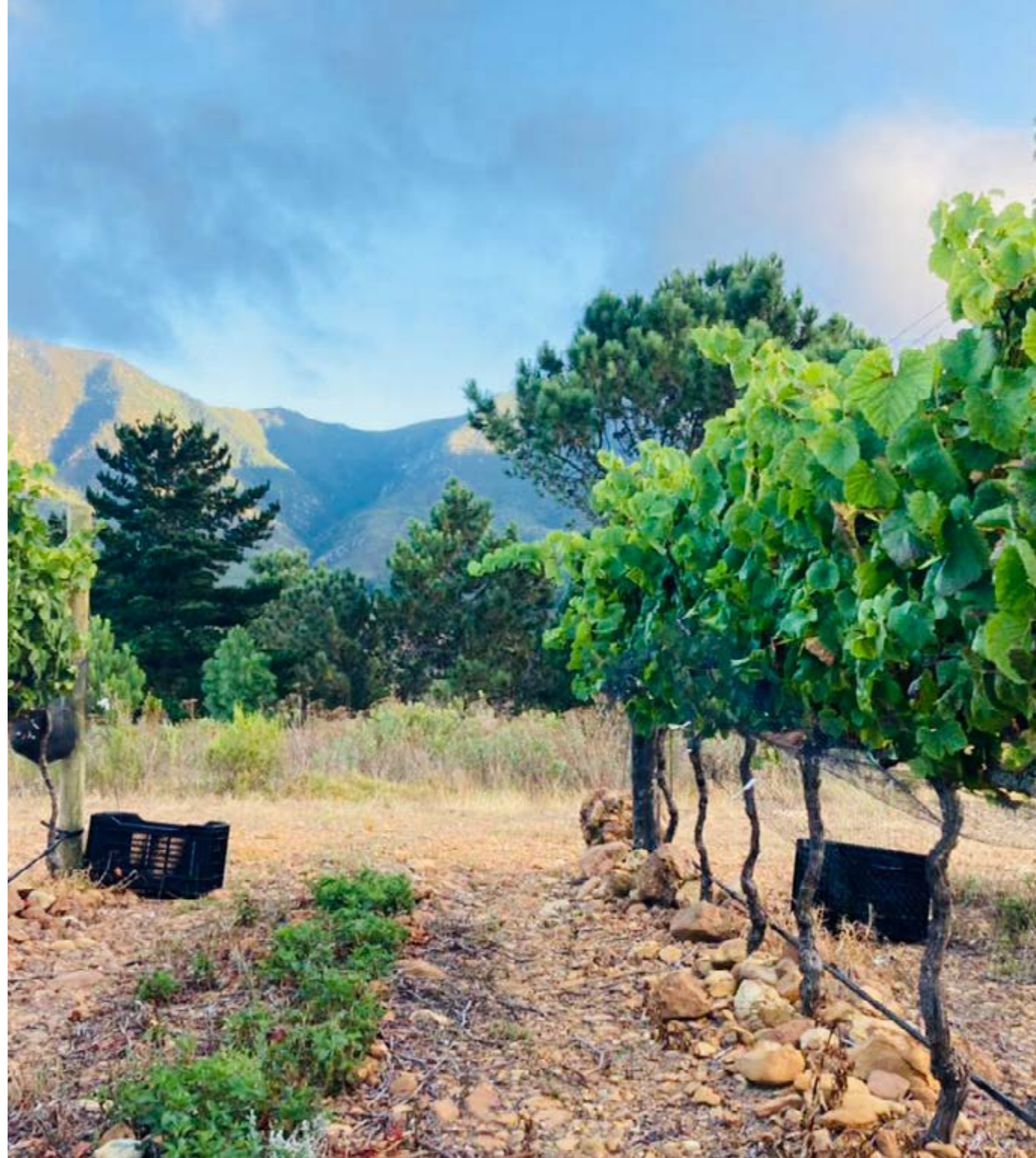
Low – High Estimate: R4000 – R6000

'Maiden vintage. Blood orange peel, pomegranate, star anise. Succulent and crunchy, with immaculate life. Chalky tannins, vibrant acidity. This is the most youthful and feminine of the 2015's showing off the cool site. A personal favourite.'

– Higgs Jacobs (Feb 2022)

'Made with Pinot purchased from La Vierge's substantial holdings on the Ridge, this is the second release of this 150 case bottling. The freshness of the sea breeze influence combines appealingly with the 10% whole bunch spice and redcurrant and black cherry fruit.'

– Tim Atkin MW, SA Special Report 2016, 93/100





HEMEL-en-AARDE

WINES • HERMANUS



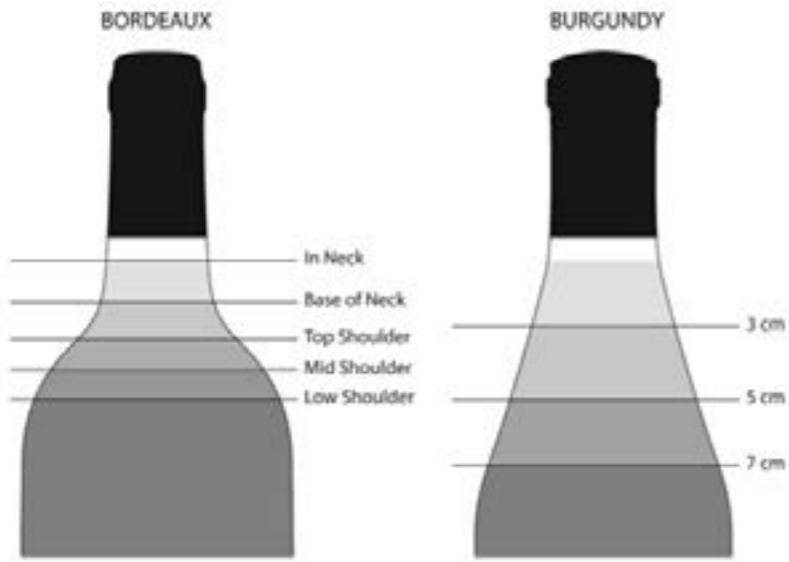
Your Guarantee of Excellence

We have made absolutely sure that all the wines sold on the Strauss & Co Fine Wine Auction come from credible provenance, properly stored, in order to pass on to our clients, the guarantee that these wines represent the pinnacle of rare, properly matured, fine South African wines.

Ullage

Ullage is the amount of headspace between the closure and the liquid inside a wine bottle – i.e. the fill level. Over extensive periods of time, we expect the level to drop due to cork absorption and evaporation. Ullage is one of our best guides to indicate vintage bottles’ condition, and lower levels in young bottles of wine are not accepted. In general, we do not accept levels below mid-shoulder in Bordeaux shaped bottles or 7cm in Burgundy bottles except in extremely rare and old examples.

Strauss & Co includes an ullage level in our condition report, available to access in the catalogue for buyers’ peace of mind. Importantly, low ullage is not the only indicator of wine quality. Often lower ullage bottles can offer the same quality as those with higher ullage.



Storage Tips & Tricks

To ensure that you get the maximum enjoyment out of your purchase, it is important that these optimum cellaring conditions are continued, especially if you are considering reselling the wines in the future. Please contact our partners at WineCellar.co.za if you would like to consider professional cellaring. Otherwise, here are a few important pointers on how to store your wine correctly until you decide to open it.

- **Temperature** Ideal range between 12°C–16°C. The key is avoiding fluctuations
- **Darkness** Store wines in a dark space, as light prematurely ages wine
- **Store your wine on its side** This position keeps the liquid in touch with the cork
- **Quiet** Free of vibration and other movement which will disturb the sediment
- **Humidity** roughly at around 70%. This prevents the cork from shrinking

Opening older corks

Natural corks are a great closure for ageing wines; however, it is wise to expect a cork in an aged wine (whether white, red or fortified) to be brittle and fragile. It is hard to predict exactly when a cork will lose its youthful vigor, a sensible rule is to handle all wines older than 10 years with care when uncorking for enjoyment. The old sweet wines can be especially tricky.

Where we were entirely doubtful of the integrity of the corks in any of the wines on auction, we re-corked them with new corks to ensure quality. In the case that the capsules, corks and fill heights still looked satisfactory we opted not to disturb the original packaging.

If you are using a regular (screw) opener, make sure that the screw is inserted into the center of the cork, and make sure that you go deep enough, otherwise you will only pull out the top half of the cork. Pull upwards very softly and very slowly. Tools of the trade for easier opening are the prong openers, also called the ‘Ah So’ for when we expect really fragile corks. Generally, most corks can be removed with regular bottle openers, as long as it’s done slowly and carefully.

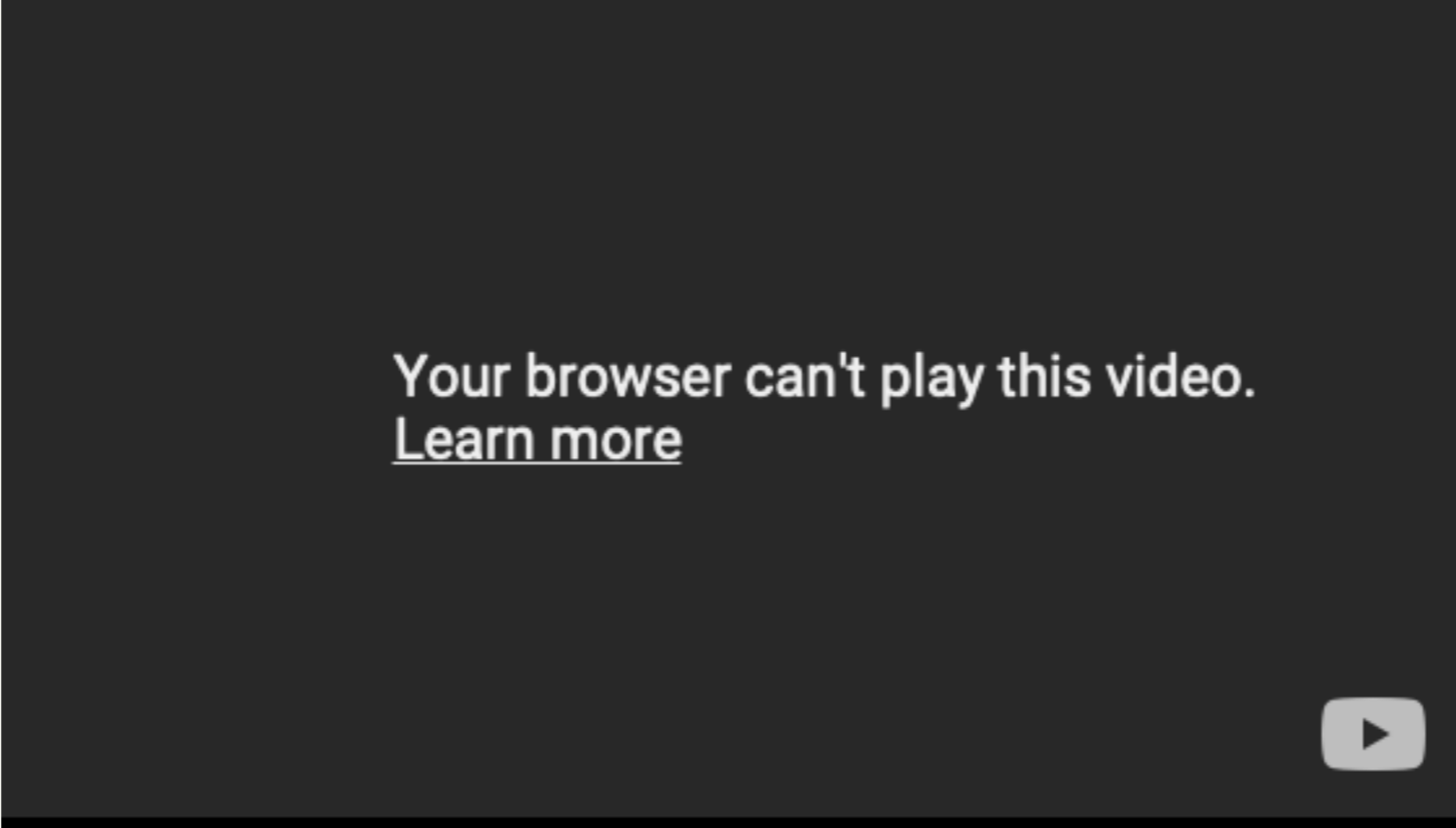
Important

If you do find that the cork does disintegrate and a few pieces fall into the wine, note that this does not mean that your wine is now spoilt. Simply decant the wine with a funnel and sieve if you have one, or any clean filter process that you can muster up. A corked wine is a wine that has been sealed with a defective cork and can be a perfectly healthy-looking cork in a young wine. A piece of cork in your wine can be removed without any harm to the wine. Note also that a brittle cork does not equate to a spoilt wine. The only proof of a wine’s condition is in its taste!

Many red wines and Port-style wines would have also dropped a sediment. This is a harmless deposit that actually points to positive elements of more natural winemaking and less intensive filtration by the winemaker. It can simply be prevented from finding its way into your glass by moving the bottle from horizontal storage into a vertical position for a few hours before service.

Very old wines will be sensitive to oxidation and should never be aerated in a decanter as extensively as a younger wine. If an older red wine has been decanted for sediment, it should be served immediately thereafter.

Basically, the older a bottle of wine, the more respect it demands, however your extra little bit of care will be dwarfed by the reward inside the bottle!



[Open You Tube video](#)

Strauss&co



1
Crystallum
Clay Shales Chardonnay, 2014
750ml 6 (1 x 6) 750ml
The Clay Shales Chardonnay is a single-vineyard wine from a site on the Hemel-en-Aarde Ridge that is ideally located in a mountain shadow, at high altitude and near the ocean. The wine is named after the Bokkeveld shale and clay soils on which it is grown, which combine to provide the perfect base for a balanced, Grand Cru-rivaling wine.

R6 000 – 8 000

2
Crystallum
Clay Shales Chardonnay, 2014
750ml 6 (1 x 6) 750ml

R6 000 – 8 000

3
Crystallum
Clay Shales Chardonnay, 2015
750ml 6 (1 x 6) 750ml

R6 000 – 9 000

4
Crystallum
Clay Shales Chardonnay, 2015
750ml 6 (1 x 6) 750ml
R6 000 – 9 000



Crystallum
Clay Shales Chardonnay

CRITIC RATINGS

2014
‘Nutty overtones to salted caramel, baked rye and dried yellow fruit. Wonderfully firm acidity that lifts the wine and keeps it vibrant. Ready to enjoy, classy mature Chardonnay.’
– **Higgo Jacobs (Feb 2022)**

‘Sourced from a vineyard that’s located just to the east of the Hemel en Aarde Ridge, this shares many of the characteristics of wines produced there. Fermented in concrete eggs and older oak, it’s a lovely, nuanced wine: floral, textured and finely oaked with lime, lemon and vanilla spice combining to delicious effect. Drink: 2015–20’
– **Tim Atkin SA Wine Report 2015, 94/100**

‘Citrus, stone, wildflower & ripe pear – with toasty hint – on early complexity of ‘14 from high-altitude single vineyard. Rich & creamy palate, with succulent acidity carrying it to a very long mineral finish. Vines just outside of the Hemel-en-Aarde, so Wine of Origin Overberg.’
– **Platter’s SA Wine Guide 2016, 4.5***

2015
‘Upfront ripe yellow fruit marries well with warm mineral tones and orange zest. The palate is wonderfully rich, almost sweet in its fruit purity. Clearly a warm vintage offering lots of power and concentration. Drink Now – 2024’
– **Higgo Jacobs (Feb 2022)**

‘Intense white flower perfume, ginger crème brûlée and stone-fruit flavours on satiny 2015 from Overberg. Bunch pressed/aged 20% new oak. Full and broad, with creamy core and long mineral finish. A keeper.’
– **Platter’s SA Wine Guide 2017, 4.5* (92/100)**

‘Clay Shales comes from a single vineyard that is just beyond the boundary of the Hemel-enAarde Ridge. It sees 25% new wood and completes its malolactic fermentation. It’s slightly broader than the 2014, but has the same spice, concentration and tangerine notes.’
– **Tim Atkin MW, SA Special Report 2016, 92/100**

5
Crystallum
Clay Shales Chardonnay, 2016
750ml 6 (1 x 6) 750ml
The Clay Shales Chardonnay is a single-vineyard wine from a site on the Hemel-en-Aarde Ridge that is ideally located in a mountain shadow, at high altitude and near the ocean. The wine is named after the Bokkeveld shale and clay soils on which it is grown, which combine to provide the perfect base for a balanced, Grand Cru-rivaling wine.

R6 000 – 8 000

6
Crystallum
Clay Shales Chardonnay, 2016
750ml 6 (1 x 6) 750ml

R6 000 – 8 000

7
Crystallum
Sauvignon Blanc, 2007
750ml 6 (1 x 6) 750ml
R3 000 – 4 000

8
Crystallum
Sauvignon Blanc, 2007
750ml 6 (1 x 6) 750ml
R3 000 – 4 000



Crystallum
Clay Shales Chardonnay, 2016

CRITIC RATINGS

‘Lots of lasting vibrancy on the nose that is intact and complex. Lemon, flint, salted butter. The palate has a sweet core of fruit – generous, creamy and superbly balanced. Lots of further life and promise to this, although it’s gorgeous now.’
– Higgs Jacobs (Feb 2022)

‘Full and broad flagship white, 2016 citrus peel, apple blossom, vanilla and wet stone aromas and flavours; well-judged oak; crème brûlée and ginger conclusion. Hemel-en-Aarde Ridge fruit, bunch pressed/aged 2,600L foudre. Structured to reward the patient, as was 2015 (92 pts) from Overberg.’
– Platter’s SA Wine Guide 2018, 4.5* (93/100)

‘One of a number of outstanding Chardonnays produced on the Hemel en Aarde Ridge, albeit from youngish vines, this foudre-aged white is a revelation in 2016. Rich, spicy and compact, showing understated oak, some baking spices and impressive palate length. 2018–25.’
– Tim Atkin MW, SA Special Report 2017, 96/100

Crystallum
Sauvignon Blanc, 2007

CRITIC RATINGS

‘Very first release from the property to get the name out and generate a little cash flow to start the Burgundian focused offering that we now know. Lime zest, sweet bell peppers, asparagus and baked granny smith apple. The palate is impressively vibrant, still showing passion fruit and elderflower with the citrus and apple flavours.’
– Higgs Jacobs (Feb 2022)

‘Interesting thatch and khaki bush prelude to fresh, forthcoming green/tropical fruit; 2007 well weighted and full, partly due to 7 months lees-aging; lingering passionfruit aftertaste.’
– Platter’s SA Wine Guide 2009, 4*

9
Crystallum
Cuvée Cinéma Pinot Noir, 2009
750ml 6 (1 x 6) 750ml
Scenes from a movie based on the life of Napoleon were shot on the Cinéma site the year before vineyards were introduced, which gave this wine its name. This Cuvée is a selection of barrels made from said single vineyard, a premium site in the Hemel-en-Aarde Ridge that was meticulously designed to produce the highest quality Pinot Noir with the planting of high density vines using disease-free Dijon clones.

R9 000 – 12 000

10
Crystallum
Cuvée Cinéma Pinot Noir, 2009
750ml 6 (1 x 6) 750ml
R9 000 – 12 000

11
Crystallum
Cuvée Cinéma Pinot Noir, 2014
750ml 6 (1 x 6) 750ml
R7 000 – 9 000

12
Crystallum
Cuvée Cinéma Pinot Noir, 2014
750ml 6 (1 x 6) 750ml
R7 000 – 9 000



Crystallum
Cuvée Cinéma Pinot Noir

CRITIC RATINGS

2009
‘2nd vintage produced. Notable oak combines with barnyard and ripe red fruit aromas. Cola and tarry notes on the palate that still has a lot of structure and pedigree, impressive from the young vines at the time. Good viscosity and chewy tannins. Long finish. Comfortably in drinking window, but very stable to last.’
– Higgs Jacobs (Feb 2022)

‘2009 sultry and smoky, dark cherry notes, raspberry whiffs, cinnamon and allspice. Lightly textured and savoury, an appealing quince-like youthful astringency to the tannins. Whole-berry fermentation, with whole cluster portion. 75% new oak.’
– Platter’s SA Wine Guide 2011, 4.5*

2014
‘Blousy, youthful fruit perfume with herbal notes and forest floor complexity. Firm structure and elegance retained on the palate, having aged with grace and still showing more potential. Balanced and accessible now, with primary fruit still intact, but will also reward further cellaring.’
– Higgs Jacobs (Feb 2022)

‘Jaw-dropping perfumed grace on the 2014 from single Hemel-en-Aarde Ridge parcel. Displays a fine combination of richness and delicacy. Pure fruit and silky texture give early charm; structure bodes well for future enjoyment. Natural ferment, as all.’
– Platter’s SA Wine Guide 2016, 4.5*

‘The densest and most deeply coloured of Crystallum’s Pinots, this is what Peter-Allan Finlayson refers to as “the big daddy”. With high density planting, 30% whole bunches and super texture, this is a subtly oaked, balanced wine showing the guts and dark fruit of a Pommard.’
– Tim Atkin MW, SA Special Report 2015, 94/100

13
Crystallum
Cuvée Cinéma Pinot Noir, 2015
750ml 6 (1 x 6) 750ml
Scenes from a movie based on the life of Napoleon were shot on the Cinéma site the year before vineyards were introduced, which gave this wine its name. This Cuvée is a selection of barrels made from said single vineyard, a premium site in the Hemel-en-Aarde Ridge that was meticulously designed to produce the highest quality Pinot Noir with the planting of high density vines using disease-free Dijon clones.

R7 000 – 10 000

14
Crystallum
Cuvée Cinéma Pinot Noir, 2015
750ml 6 (1 x 6) 750ml

R7 000 – 10 000

15
Crystallum
Cuvée Cinéma Pinot Noir, 2016
750ml 6 (1 x 6) 750ml

R6 000 – 8 000

16
Crystallum
Cuvée Cinéma Pinot Noir, 2016
750ml 6 (1 x 6) 750ml
R6 000 – 8 000



Crystallum
Cuvée Cinéma Pinot Noir

CRITIC RATINGS

2015
‘Show-stopping, wild-fermented flagship. 2015 from Overberg vines shows purity, vibrant fruit flavours and concentrated richness. 30% new oak gives structure that will last. Class act. 30% whole bunches, as Peter Max.’
– **Platter’s SA Wine Guide 2017, 4.5***

Subtle, scented and showing the fresh acidity that’s a feature of many Pinot Noirs from the Ridge, this appealing cuvée is fermented with 40% stems. There’s a hint of reduction on the nose, but it adds to the complexity of the raspberry and red cherry flavours.’
– **Tim Atkin MW, SA Special Report 2016, 94/100**

2016
‘The introduction of whole cluster fermentation from Peter Allan in 2016 expresses in mint, red berries and floral perfume on the nose. Lots of spice and inner perfume on the palate, almost a-typical in its flavour profile, but see it as an interesting and alluring expression of new world Pinot, in early stage of development.’
– **Higgo Jacobs (Feb 2022)**

‘Show-stopping, wild-fermented (as all) flagship from low-vigour Hemel-en-Aarde Ridge single vineyard on clay and shale. 2016 pure and vibrant, with fine tannins and silky texture, structure from 30% new oak and slightly more whole bunches than last (40% vs 30%) for longevity.’
– **Platter’s SA Wine Guide 2018, 4.5***

‘Picked earlier than his other Pinots as a rule, Cuvée Cinéma comes from the Hemel en Aarde Ridge and sees 30% whole bunches. Tangy, refreshing and well balanced, with floral aromas, subtle oak, some pepper spice and acidity that lifts the finish. 2018–25.’
– **Tim Atkin MW, SA Special Report 2017, 95/100**

17

Crystallum

Cuvée Cinéma Pinot Noir, 2017

750ml 6 (1 x 6) 750ml

Scenes from a movie based on the life of Napoleon were shot on the Cinéma site the year before vineyards were introduced, which gave this wine its name. This Cuvée is a selection of barrels made from said single vineyard, a premium site in the Hemel-en-Aarde Ridge that was meticulously designed to produce the highest quality Pinot Noir with the planting of high density vines using disease-free Dijon clones.

R6 000 – 8 000

18

Crystallum

Cuvée Cinéma Pinot Noir, 2017

750ml 6 (1 x 6) 750ml

R6 000 – 8 000



Crystallum

*Cuvée Cinéma Pinot Noir,
2017*

CRITIC RATINGS

‘Depending on personal preference of course, perhaps the sweet spot for drinking Crystallum Pinot is around 5 years, while it boasts all the vibrancy and generous fruit freshness, integrated the oak and having developed just a hint of earthy complexity and soft tannins. This is super young, but very delicious now. A personal favourite.’

– Higgo Jacobs (Feb 2022)

‘Tension and vibrancy clues to cool elevated Hemel-en-Aarde Ridge source. 2017 has mouthwatering fruit purity and depth, silky texture complemented by secure structure, auguring well for long ageing. 50% whole bunches (40% in 2016 (4.5 stars, 93 pts)) & 30% new oak augment superb quality.’

– Platter’s SA Wine Guide 2019, 5* (95/100)

‘Made with fruit from a remarkable, high-density vineyard on the Hemel-en-Aarde Ridge, this is a supremely elegant, nuanced expression of Pinot Noir, with pot pourri and rose petal scents, some pepper spice from 50% stems and a focused, refreshing finish. Brilliant winemaking. 2019–25.’

– Tim Atkin MW, SA Special Report 2018, 95/100

19
Crystallum
Cuvée Cinéma Pinot Noir, 2018
750ml 6 (1 x 6) 750ml
Scenes from a movie based on the life of Napoleon were shot on the Cinéma site the year before vineyards were introduced, which gave this wine its name. This Cuvée is a selection of barrels made from said single vineyard, a premium site in the Hemel-en-Aarde Ridge that was meticulously designed to produce the highest quality Pinot Noir with the planting of high density vines using disease-free Dijon clones.

R7 000 – 10 000

20
Crystallum
Cuvée Cinéma Pinot Noir, 2018
750ml 6 (1 x 6) 750ml
R7 000 – 10 000



Crystallum
Cuvée Cinéma Pinot Noir, 2018

CRITIC RATINGS

In a October 2019 Decanter panel tasting of New World, single-vineyard Pinots, the 2018 Crystallum Cuvée Cinéma came out on top with 98 points. Out of the 100 wines tasted, it was the only wine to be rated ‘exceptional’.

The Decanter judges say that for them, ‘a single vineyard is the New World version of a climate in Burgundy’ and singled out Hemel-en-Aarde and Elgin for producing ‘consistently high quality’ wines. This wonderful, finely-crafted Pinot best expresses Peter-Allan Finlayson’s vision and is firmly ensconced as one of SA’s best. The 2018 has attractive, rich notes over earthy complexity and a sumptuous, sensual palate.

‘These are some of South Africa’s finest Pinot Noirs and Chardonnays. Attesting to that was the fine performance of his wine when served against the likes of Domaine de la Romanée-Conti... these wines are highly recommended, although quantities remain frustratingly small!’ – Neal Martin

‘Pleasing aromas of earth and vanilla, balanced and elegant with red fruit and violets.’ – James Doidge, Decanter, Oct 2019, 97/100

‘Bonfire and classic SA on the palate; smoky bacon and darker red fruits, soft tannin and balance. It’s meaty, deep but all-in, with wonderful texture and handsome style. Fresh, new and exciting.’ – Roger Jones, Decanter, Oct 2019, 98/100

‘Pure, clear and focused with attractive notes of red forest fruits, dried herbs and sweet spices. On the palate it is youthful and vibrant, with attractive savoury complexity. The overall structure is firm yet sophisticated.’ – Dirceu Vianna Junior MW, Decanter, Oct 2019, 98/100

‘Raspberry cordial, red currant liqueur, sloe berries and rosewater. Quite heady on aromatics leading into ripe red fruit, integrated oak and polished tannins on the palate. Still very young and expressive, showing the lasting freshness of the Hemel&Aarde Ridge appellation.’ – Higgs Jacobs (Feb 2022)

‘From Hemel-en-Aarde Ridge, 2018 Pinot at its alluring, scented best; exotic note in its dark cherry and spice. Great depth of flavour, silky texture supported by complementary structure, freshness. Equal parts bunch and wholeberry pressed, 25% new oak.’ – Platter’s SA Wine Guide 2020, 4.5* (94/100)

‘As he is for Crystallum’s Clay Shales Chardonnay, André de Lange supplies the grapes for this superb Pinot Noir. With 50% whole bunches, 30% new wood and the freshness and perfume that are typical of wines from the Ridge, this has notes of cinnamon spice, rose petal and wild strawberry and a refreshing, saline undertone. 2020–28.’ – Tim Atkin MW, SA Special Report 2019, 95/100

21
Crystallum
Mabalel Pinot Noir, 2014
750ml 6 (1 x 6) 750ml
Mabalel is named after a poem by the legendary South African polymath Eugene Marais, which tells the story of a local chieftain’s daughter of the same name who was ambushed while fetching water from the Limpopo river by the crocodile, Lalele. The vineyard is planted on ‘Kaaimansgat’ farm – meaning Crocodile’s lair – and a river flows past the vineyard. The site is 700m high and surrounded by dramatic mountains, with peaks that are often snow-capped in winter.

R6 000 – 8 000

22
Crystallum
Mabalel Pinot Noir, 2014
750ml 6 (1 x 6) 750ml

R6 000 – 8 000

23
Crystallum
Mabalel Pinot Noir, 2016
750ml 6 (1 x 6) 750ml

R6 000 – 8 000

24
Crystallum
Mabalel Pinot Noir, 2016
750ml 6 (1 x 6) 750ml

R6 000 – 8 000



Crystallum
Mabalel Pinot Noir

CRITIC RATINGS

2014
‘Jammy dark fruit aromatics over sweet cola and a hint of smoke. Generous, soft and harmonious, with a persistent acidity that is really keeping the wine together and appetising. The slightest of earthy, leathery notes from bottle age adds a layer of complexity to the finish. Ready to be enjoyed.’
– Higgs Jacobs (Feb 2022)

‘From a high-lying young inland (Elandskloof) vineyard, 14 from all destemmed grapes. Concentrated & refined, marrying pure red berry fruit with spicy oak & long velvety exit. Well-judged oaking on all these pinots.’
– Platter’s SA Wine Guide 2016, 4.5*

‘Intense and interesting. Edgy but with masses of fine fruit in the middle. All within a herbal wreath. So much intensity and ambition from Andrew and Peter-Allan Finlayson. Really exciting!’
– Jancis Robinson (September 2016), 17.5/20

2016
‘Steely, flinty intro promising freshness to come. Cranberry, strawberry and plums with a complimenting barnyard and smoked meat layer. Steely and grippy, this is the most youthful of the 2016 Pinots.’
– Higgs Jacobs (Feb 2022)

‘Sourced from a single, high altitude site in the Overberg (Elandskloof), where Peter-Allan Finlayson also sources some of his Chardonnay from, this is elegant, delicate and flora, with racy acidity, fine tannins and a core of succulent fruit sweetness. 2018–24.’
– Tim Atkin MW, SA Special Report 2017, 95/100

‘4th vintage from high-lying inland Elandskloof vineyard, 2016 continues in form of poised and elegant predecessors with raspberry and cherry fruit, cap-puccino and earth hints perfectly balanced by fine tannins and creamy oak. Only 10% whole bunch, lowest of all the Pinots.’
– Platter’s SA Wine Guide 2018, 4.5* (93/100)

25
Crystallum
Bona Fide Pinot Noir, 2015
750ml 6 (1 x 6) 750ml
Bona Fide is the Latin term for ‘In good trust’ which refers appropriately to our relationship with the owners of the vineyards, the Lötter family, which extends back 30 years. It is only through a relationship based on complete trust that the resulting wine will do justice to this special site.

R6 000 – 9 000

26
Crystallum
Bona Fide Pinot Noir, 2015
750ml 6 (1 x 6) 750ml
R6 000 – 9 000

27
Crystallum
Bona Fide Pinot Noir, 2016
750ml 6 (1 x 6) 750ml
R6 000 – 8 000

28
Crystallum
Bona Fide Pinot Noir, 2016
750ml 6 (1 x 6) 750ml
R6 000 – 8 000



Crystallum
Bona Fide Pinot Noir

CRITIC RATINGS

2015
‘Combined black and red fruit on the brooding 2015 that is opulent and robust, bringing a welcome savoury complexity to the generous, rich fruit. Lots of concentration on the palate, reigned in by an exotic, dark berry and spice note and firm, edgy tannins. Potential to keep further.’
– Higgs Jacobs (Feb 2022)

‘Hemel-en-Aarde Valley fruit, 40% whole bunches. 2015 textured and hugely appealing with complex earthy fynbos aromas, vanilla-infused strawberry compote flavours, lingering savoury farewell. 30% new oak.’
– Platter’s SA Wine Guide 2017, 4.5*

2016
‘Lots of vibrancy to the 2016, showing mint and pepper along with juicy strawberry and cherry fruit. Linear and steely on the palate, picking up slightly unripe strawberries and slight stinky spice. Savoury tail. Not the best of the range, but a welcome and interesting variation.’
– Higgs Jacobs (Feb 2022)

‘Voluptuous 2016 thrilling juxtaposition fruit-sweet richness and vibrant acidity; the long savoury, fynbos finish the final note to holistic, harmonious glassful. Early ripening Hemel-en-Aarde Valley vineyard, 50% whole bunch, but 10% less new oak (20%) than 2015.’
– Platter’s SA Wine Guide 2018, 4.5* (93/100)

‘Bona Fide comes from the Vrede vineyard, where Hannes Storm also buys Pinot Noir fruit, and is the most structured of the Crystallum Pinots, despite the young age of the vines, seeing 50% whole bunches and 20% new oak. Rich, textured and spicy with real va-va-voom. 2018–26.’
– Tim Atkin MW, SA Special Report 2017, 96/100

29
Crystallum
Whole Bunch Pinot Noir, 2016
750ml 6 (1 x 6) 750ml
R6 000 – 9 000

30
Crystallum
Whole Bunch Pinot Noir, 2016
750ml 6 (1 x 6) 750ml
R6 000 – 9 000

31
Crystallum
Whole Bunch Pinot Noir, 2018
750ml 6 (1 x 6) 750ml
R5 000 – 7 000

32
Crystallum
Whole Bunch Pinot Noir, 2018
750ml 6 (1 x 6) 750ml
R5 000 – 7 000



Crystallum
Whole Bunch Pinot Noir

CRITIC RATINGS

2016
‘Juicy and vibrant expression, showing the whole bunch flavours in a spicy, pure, bright and chewy way. Impressively sprightly after 6 years, the Whole Bunch is no longer being produced, and makes for a great addition to the collection.’
– Higgs Jacobs (Feb 2022)

‘Fruit selection from Cuvée Cinéma vineyard, 100% whole bunch, barrel ferment. 2016’s 50% new oak adds intense spiciness, succulent sappy character to the palate, nicely offset by bright wild berry notes. Only 630 bottles.’
– Platter’s SA Wine Guide 2018, 4.5* (93/100)

‘A wine that does what it says on the label, this is the first release of this Pinot from the same vineyard as Cuvée Cinéma, fermented with 100% whole bunches. Dense, smoky and quite grippy, it’s something of a geek’s wine, with lapsang souchong notes and savoury tannins. 2019–24.’
– Tim Atkin MW, SA Special Report 2017, 93/100

2018
‘Ripe and full-bodied, 2018 has deep perfume of wild strawberries and spice; the fruit is sweet and succulent, lacking some depth but framed by well-paced sappy tannins associated with 100% whole bunch ferment. Oak aged, 20% new. No 2017.’
– Platter’s SA Wine Guide 2021, 4.5* (93/100)

‘There was no 2017 release of this small volume wine, but the thrilling second bottling was well worth waiting for. Made from an equal blend of Hemel-en-Aarde Ridge and Shaw’s Mountain fruit, it was fermented with 100% whole bunches to “see where it goes”, according to Peter-Allan Finlayson. The result is stunningly good: sappy, savoury and spicy, with layers of complexity, fine oak and tapering, scented finish. Only 1,200 bottles, alas. 2022–27.’
– Tim Atkin MW, SA Special Report 2020, 97/100

33
Crystallum
Paradisum, 2011
750ml 6 (1 x 6) 750ml
R4 500 – 6 000

34
Crystallum
Paradisum, 2011
750ml 6 (1 x 6) 750ml
R4 500 – 6 000

35
Crystallum
Peter Max Pinot Noir, 2017
750ml 6 (1 x 6) 750ml
Peter and Max are the first names of the growers who supplied the fruit for the first vintage of this wine. The fruit sources have since changed but the name remains to honor the beginnings of our multi-vineyard Pinot Noir blend. The philosophy here is to use the different batches to form a blend that is more than the sum of its parts.
R4 000 – 6 000



Crystallum
Paradisum, 2011

CRITIC RATINGS

‘Like a big, classy Gigondas, this has dark fruit, spice, savoury meaty, smoky layers and that elusive lavender and salted liquorice. Full bodied, broody, complex and warming Rhone blend with class and longevity.’
– Higgs Jacobs (Feb 2022)

‘Lovely texture and frankness. Great expression and relaxed fruit to the fore. No obvious oak. So neat and spreads so elegantly over the palate.’
– Jancis Robinson MW, JancisRobinson.com, 17.5/20 (Sept 2014)

‘Gently perfumed, complex aromas on the 2011 from Shiraz, 20% Mourvèdre; palate a touch less charming – rather elegant, yes, with fresh acidity, subtle oak and restrained, firm grip, but less generosity.’
– Platter’s SA Wine Guide 2014, 4*

Crystallum
Peter Max Pinot Noir, 2017

CRITIC RATINGS

‘Full bodied and with density to its dark-berry, undergrowth fruit, 2017 is also refined and supple. Balanced structure and freshness of fine tannins allow for current and future drinking pleasure. 30% whole bunch, 10% new oak. From 4 vineyards.’
– Platter’s SA Wine Guide 2019, 4.5* (91/100)

‘Four different properties supply fruit for this aromatic, cool climate Pinot Noir from Peter-Allan Finlayson. It’s a bright, elegant style with red cherry and strawberry fruit, some clove spice from 40% whole clusters and a juicy, refreshing finish. 2019–23.’
– Tim Atkin MW, SA Special Report 2018, 93/100

Crystallum*Peter Max Pinot Noir, 2015*

750ml 6 (1 x 6) 750ml

Peter and Max are the first names of the growers who supplied the fruit for the first vintage of this wine. The fruit sources have since changed but the name remains to honor the beginnings of our multi-vineyard Pinot Noir blend.

The philosophy here is to use the different batches to form a blend that is more than the sum of its parts.

R4 000 – 6 000**Crystallum***Peter Max Pinot Noir, 2015***CRITIC RATINGS**

‘Cool, elegant and understated 2015, delicate floral perfume, whisper of dark chocolate and smoke with light peppery finish. Very feminine expression from Hemel-en-Aarde Ridge, Overberg and Elandskloof, 10% new oak.’
– **Platter’s SA Wine Guide 2017, 4.5***

‘Peter Max is a blend of grapes from four areas – the Hemel-en-Aarde Valley, the Ridge, Overberg and Elandskloof – and tends to be the lightest and first released of Peter-Allan Finlayson’s Pinots. Elegant, floral and delicate, it has some clove spice from 30% whole bunches, subtle oak and a core of raspberry fruit.’

– **Tim Atkin MW, SA Special Report 2016, 92/100**

37
Newton Johnson
Family Vineyards Chardonnay,
2012
750ml 6 (1 x 6) 750ml
R6 000 – 9 000

38
Newton Johnson
Family Vineyards Chardonnay,
2012
750ml 6 (1 x 6) 750ml
R6 000 – 9 000

39
Newton Johnson
Family Vineyards Chardonnay,
2012
750ml 6 (1 x 6) 750ml
R6 000 – 9 000

40
Newton Johnson
Family Vineyards Chardonnay,
2012
5000ml 1 (1 x 1) 5000ml
R6 000 – 9 000

Newton Johnson
Family Vineyards
Chardonnay, 2012

CRITIC RATINGS

‘2012 more restrained & youthfully complex than Southend version. Supple, silky charm bound up with a quiet, limy intensity & a quickening acidity. Oaking modest (just 25% new) & unobtrusive – as is the 12.9% alcohol. Assertive in only the most subtle way! Improves on 11 & tough-vintage 10.’
– Platter’s SA Wine Guide 2014, 5*

‘The 2012 Family Vineyards Chardonnay comes from the estate’s vines located just below the Pinot Noir vines. Raised in around 30% new oak from two small Burgundy coopers, it has a lovely nougat and hazelnut-tinged bouquet, the fruit neatly entwined with the oak. The palate is well balanced with crisp acidity, quite effervescent with touches of orange zest, white peach and apricot, hints of lemon curd and white chocolate coming towards the finish. This is even better than when I tasted it last year – superb.’
– Neal Martin 92/100, Wine Advocate (2014)



41
Newton Johnson
Family Vineyards Chardonnay,
2013
750ml 6 (1 x 6) 750ml
R6 000 – 9 000

42
Newton Johnson
Family Vineyards Chardonnay,
2013
750ml 6 (1 x 6) 750ml
R6 000 – 9 000

43
Newton Johnson
Family Vineyards Chardonnay,
2013
750ml 6 (1 x 6) 750ml
R6 000 – 9 000

44
Newton Johnson
Family Vineyards Chardonnay, 2014
3000ml 1 (1 x 1) 3000ml
R4 000 – 6 000

Newton Johnson
Family Vineyards
Chardonnay

CRITIC RATINGS

2013
‘Exquisitely textured 2013, inter-
leaving crisp citrus fruit, wood
spice, acid and stern minerality
with poise, aplomb. Fun candy-
floss fillip on tail.’
– Platter’s SA Wine Guide 2015, 4.5*

‘Satisfying wine with a begin-
ning, middle and end and no
shortage of fruit. Savoury end.
Juicy, salivatory stuff. Cool and
restrained. Nothing extreme and
all in balance.’
– Jancis Robinson MW, JancisRobinson.
com, 16.5/20 (Jan 2015)

2014
‘Exquisitely textured with a chalky
minerality, 14 interleaves crisp
citrus fruit & wood spice (22% new
oak) with a stern acidity. Poised &
elegant, it will reward ageing.’
– Platter’s SA Wine Guide 2016, 5*

‘Like all the Newton Johnson
Chardonnays, this went through
malolactic fermentation, produc-
ing a wine that’s textured and
comparatively soft, with a struc-
ture that is more Meursault than
Puligny-Montrachet. Oatmeal-
y and spicy, it finishes with a lick of
acidity.’
– Tim Atkin SA Wine Report 2015, 93/100



45
Newton Johnson
Family Vineyards Chardonnay,
2015
750ml 6 (1 x 6) 750ml
R7 000 – 9 000

46
Newton Johnson
Family Vineyards Chardonnay,
2015
750ml 6 (1 x 6) 750ml
R7 000 – 9 000

47
Newton Johnson
Family Vineyards Chardonnay,
2015
750ml 6 (1 x 6) 750ml
R7 000 – 9 000

48
Newton Johnson
Family Vineyards Chardonnay,
2015
5000ml 1 (1 x 1) 5000ml
R6 000 – 9 000

Newton Johnson
Family Vineyards
Chardonnay, 2015

CRITIC RATINGS

‘2015 a powerhouse, not of extract
& alcohol but restraint & stylish
elegance’
– Platter’s SA Wine Guide 2017, 5*

‘Family Vineyards comes from
three sites, two north- and one
south-facing and is the top
Newton Johnson Chardonnay.
Rich, honeyed and spicy, with
creamy malolactic notes and
orange zesty, lemony acidity. The
oak is beautifully folded into the
wine. Drink: 2016–20’
– Tim Atkin SA Wine Report 2016, 94/100



49
Newton Johnson
Family Vineyards Chardonnay,
2017
750ml 6 (1 x 6) 750ml
R6 000 – 8 000

50
Newton Johnson
Family Vineyards Chardonnay,
2017
750ml 6 (1 x 6) 750ml
R6 000 – 8 000

51
Newton Johnson
Family Vineyards Chardonnay,
2017
750ml 6 (1 x 6) 750ml
R6 000 – 8 000

Newton Johnson
Family Vineyards
Chardonnay, 2017

CRITIC RATINGS

‘From 3 granite vineyards, different aspects, giving 2017 its layers. Wild ferment (as all), barrelled 11 months adds oatmeal biscuit shading to brightly fresh citrus/stonefruit. Lots going on, held together by resonating acidity, for edge, vitality, great length.’
– Platter’s SA Wine Guide 2019, 4.5* (94/100)

‘Three sites on the farm – two facing north, the other south – supply the fruit for this consistently impressive Chardonnay. Full malolactic gives the wine good weight and texture, complemented by toasty oak, baking spice flavours and pithy freshness. 2019–25.’
– Tim Atkin MW, SA Special Report 2018, 94/100



52
Newton Johnson
Family Vineyards Chardonnay,
2018
1500ml 3 (1 x 3) 1500ml
R6 000 – 9 000



53
Newton Johnson
Family Vineyards Chardonnay,
2018
3000ml 1 (1 x 1) 3000ml
R5 000 – 7 000



Newton Johnson
Family Vineyards
Chardonnay, 2018

CRITIC RATINGS

‘Different aspects of 3 granite vineyards, hence 2018’s layers. Bunch pressed and wild fermented in barrel (as all): stonefruit and citrus, complex scents and flavours open up in the glass, roasted nut and oatmeal, lime and tangerine. Layered and involving.’
– Platter’s SA Wine Guide 2020, 4.5* (94/100)

‘The Family Vineyards bottling is a cuvée of three vineyards, two of them north-facing and one south. Fermented with full malolactic in 2018 because of high natural malic acid levels, this is youthful, weighty and complex, with assertive oak and a fine, chiselled, refreshing finish. 2020–25.’
– Tim Atkin MW, SA Special Report 2019, 94/100

54

Newton Johnson

Family Vineyards Pinot Noir, 2013

5000ml 1 (1 x 1) 5000ml

The wines of the Family Vineyards are the select combination of vineyard parcels that make the best, most distinct and intriguing wines that represent the farm. The Pinot Noir is the embodiment of the most definitive and consistent vineyard sites on the estate. Over the years every aspect of these vineyards has been detailed and fine-tuned in order to present their individual character and the relationship with the farm.

R7 000 – 9 000



55

Newton Johnson

Family Vineyards Pinot Noir, 2014

3000ml 1 (1 x 1) 3000ml

R4 000 – 6 000



Newton Johnson

Family Vineyards Pinot Noir

CRITIC RATINGS

2013

'As with 2012 and 2011, 2013 combines fruit from estate's best sites into a stunning whole. As before, a triumph of subtle insistence, pure fruit integrated with succulent acidity, understated tannins and sensitive oaking in an elegant composition. With a power that belies its demure demeanour.'

– Platter's SA Wine Guide 2015, 5*

2014

'Uniquely remarkable record of five star ratings – it has never failed. Low yields in 2014 meant all the fruit from the farm's top three sites combined here, with no single vineyard bottlings. As always, a triumph of subtle insistence; pure fruit integrated with succulent acidity, understated tannins and sensitive oaking in an elegant composition. Its power belies its demure demeanour.'

– Platter's SA Wine Guide 2016, 5*

'The Family Vineyards bottling combines the three single estate wines in a blend that is consistently among the best Pinots in the Cape. Aromatic, refined and beautifully framed, it has subtle oak, sweet red fruits, more tannin than you think and a tangy, savoury, refreshing finish.'

– Tim Atkin MW, SA Special Report 2015, 94/100

56
Newton Johnson
Family Vineyards Pinot Noir, 2015
750ml 6 (1 x 6) 750ml
The wines of the Family Vineyards are the select combination of vineyard parcels that make the best, most distinct and intriguing wines that represent the farm. The Pinot Noir is the embodiment of the most definitive and consistent vineyard sites on the estate. Over the years every aspect of these vineyards has been detailed and fine-tuned in order to present their individual character and the relationship with the farm.

R7 000 – 10 000



57
Newton Johnson
Family Vineyards Pinot Noir, 2015
750ml 6 (1 x 6) 750ml
R7 000 – 10 000



58
Newton Johnson
Family Vineyards Pinot Noir, 2016
750ml 6 (1 x 6) 750ml
R7 000 – 9 000

59
Newton Johnson
Family Vineyards Pinot Noir, 2016
750ml 6 (1 x 6) 750ml
R7 000 – 9 000

Newton Johnson
Family Vineyards Pinot Noir

CRITIC RATINGS

2015
‘Maintains a uniquely remarkable record of five star ratings – it’s never failed. If Mrs M needs some muscle and Windansea some finesse, and Block 6 perhaps a brush of both, the masterly 2015 blend transcends the three sites in triumph! Pure fruit integrated with succulent acidity, understated tannins and sensitive oak-ing in an elegant composition. Powerful yet demure.’
– **Platter’s SA Wine Guide 2017, 5***

‘A combination of Windansea (50%), Mrs M (30%) and Block 6 (20%), this is always more than the sum of its parts, a brilliant expression of the Upper Hemel-en-Aarde Valley. Floral, complex and well balanced, with some clover spice from 20% whole bunches, sweet red berry fruit and a long, savoury, complex finish.’
– **Tim Atkin MW, SA Special Report 2016, 96/100**

2016
‘A selection of the farm’s sites, each contributing to the final blend. Remarkable 5-star track record, last was 2015 (5 stars, 95 pts). 2016 minisculely less fine; red berries and graphite with forest floor nuances, perfect fruit/oak balance. Sleekly powerful, admirable poise, assurance.’
– **Platter’s SA Wine Guide 2018, 4.5* (94/100)**

‘Made up of mostly Windansea, with 25% each of Seadragon and Mrs M, this “expresses all of the soils of the farm”, according to Gordon Newton Johnson, and is a superb Pinot. Leafy, complex and spicy, with evident whole bunch flavours, fine tannins and a sweet finish. 2018–28.’
– **Tim Atkin MW, SA Special Report 2017, 95/100**

60
Newton Johnson
Family Vineyards Pinot Noir, 2017

3000ml 1 (1 x 1) 3000ml
The wines of the Family Vineyards are the select combination of vineyard parcels that make the best, most distinct and intriguing wines that represent the farm. The Pinot Noir is the embodiment of the most definitive and consistent vineyard sites on the estate. Over the years every aspect of these vineyards has been detailed and fine-tuned in order to present their individual character and the relationship with the farm.

R5 000 – 7 000



61
Newton Johnson
Family Vineyards Mrs M Pinot Noir, 2013
750ml 6 (1 x 6) 750ml
R9 000 – 12 000



Newton Johnson
Family Vineyards Pinot Noir, 2017

CRITIC RATINGS

‘From all soils of farm’s sites, 2017 resumes remarkable 5-star track record after blip in 2016 (4.5 stars, 94 pts). Perfumed by cranberries and violets; denser fruit sub-strata from clay-rich vineyards; then firm structure from higher-lying gravel, with Burgundian oak boost. Finesse, elegance, complexity.’
– Platter’s SA Wine Guide 2019, 5* (95/100)

‘Windansea, Seadragon and Mrs M are the three vineyard sources of this brilliant Pinot Noir. Showing a hint of whole bunch spice, it’s a pale, floral, balletic wine that pirouettes across the palate, with notes of wild herbs and textured red fruits. 2019–26.’
– Tim Atkin MW, SA Special Report 2018, 95/100

Newton Johnson
Family Vineyards Mrs M Pinot Noir, 2013

CRITIC RATINGS

‘From a free-draining vineyard with-out clay, dedicated to the late Moya McDowall. 2013 light on its feet, pretty rather than punchy, still serious. Like all these Pinots, fermented with natural yeast; year in oak, 20–35% new. Moderate 12.8% alcohol.’
– Platter’s SA Wine Guide 2015, 4.5*

‘The Mrs M Pinot comes from the vineyard with the least clay (it’s a mix of gravel, granite and quartz). Soft and savoury, with beguiling fruit sweetness and well integrated oak, it’s bright and appealing. A hugely drinkable Pinot.’
– Tim Atkin MW, SA Special Report 2015, 92/100

62
Newton Johnson
Family Vineyards Seadragon, 2017
750ml 6 (1 x 6) 750ml
R7 000 – 10 000

63
Newton Johnson
Family Vineyards Seadragon, 2017
750ml 6 (1 x 6) 750ml
R7 000 – 10 000

64
Newton Johnson
Family Vineyards Seadragon, 2017
750ml 6 (1 x 6) 750ml
R7 000 – 10 000

65
Newton Johnson
Family Vineyards Windansea, 2012
750ml 6 (1 x 6) 750ml
R9 000 – 12 000



Newton Johnson
Family Vineyards
Seadragon, 2017

CRITIC RATINGS

‘Farm’s oldest Pinot Noir block and richest-fruit wine. Vivid cherries, raspberries, violets, touch of lavender, house-style earthiness, 2017’s perfume beguiles. What follows is a perfect reflection in texture, succulent, sleekly curvaceous, ending savoury.’
– Platter’s SA Wine Guide 2019, 4.5* (93/100)

‘Seadragon comes from a north-facing slope on clay and granite soils and is one of the New World’s best Pinot Noirs. Close to a Chambolle or Volnay in style, it’s pure, racy and perfumed, all summer berries and pot pourri, with remarkable minerality and palate length. Delicious. 2019–27.’
– Tim Atkin MW, SA Special Report 2018, 96/100

Newton Johnson
Family Vineyards
Windansea, 2012

CRITIC RATINGS

‘Our prestigious Red Wine of the Year, rich, fragrant, warmly sensous 12 has particularly impressive structure (notably a succulent, mineral acidity) supporting the spicy red & black berry fruit. Lively, long-lingering; very satisfying.’
– Platter’s SA Wine Guide 2014, 5*

‘The 2012 Windansea Pinot Noir comes from the 2.5-hectare block directly in front of the winery on denser clay and decomposed granite that tends to impart more structure. It has a fragrant bouquet with scents of redcurrant, red cherry, a touch of balsamic and dried herbs, all well defined and complex. The palate is medium-bodied with quite juicy, succulent tannins, a fine line of acidity with a Chinese five spice note entering stage left toward the finish. This is an accomplished, delicious Pinot Noir to drink over the next 5–6 years.’
– Neal Martin 91/100, Wine Advocate (2014)

66
Newton Johnson
Family Vineyards Windansea, 2015
750ml 6 (1 x 6) 750ml
R9 000 – 12 000

67
Newton Johnson
Family Vineyards Windansea, 2015
750ml 6 (1 x 6) 750ml
R9 000 – 12 000

68
Newton Johnson
Family Vineyards Windansea, 2015
750ml 6 (1 x 6) 750ml
R9 000 – 12 000

69
Newton Johnson
Family Vineyards Windansea, 2017
750ml 6 (1 x 6) 750ml
R7 000 – 10 000

70
Newton Johnson
Family Vineyards Windansea, 2017
750ml 6 (1 x 6) 750ml
R7 000 – 10 000

71
Newton Johnson
Family Vineyards Windansea, 2017
750ml 6 (1 x 6) 750ml
R7 000 – 10 000



Newton Johnson
Family Vineyards Windansea

CRITIC RATINGS

2015
‘The single vineyard with grunt. Grapes from most elevated vines on clay give 2015 a dark, muscular core laced with deep black cherry and wet earth notes, with grip. Very handsome. 30% new Burgundy barrels.’
– **Platter’s SA Wine Guide 2017, 4.5***

‘Windansea comes from a block immediately below the winery. It’s the most “New World” of the Newton Johnson Pinots, with brooding concentration, plenty of colour and oak and spicy, slightly jammy fruit. The 30% whole bunches add a layer of complexity.’
– **Tim Atkin MW, SA Special Report 2016, 93/100**

2017
‘This is a beautiful Pinot Noir, with loads of earthy tones joined by baking spice and ripe black cherry, plum and wild strawberry. It boasts a subtle chocolate accent, and just a hint of roasty, coffee character, but it’s not overly rich or decadent. The palate is silky and smooth, with bright acidity to lift the ripe berry tones and lend freshness to the layered finish. Touches of peppery spice and forest floor unfold on the back.’
– **Lauren Buzzeeo, Wine Enthusiast, 95/100 (Sept 2020)**

‘Single 2.5 ha, high vineyard, one of 2 best ‘cru’ bottlings (CWG other). Aptly named site. 2017 granite/clay’s more muscular structure, denser fruit: morello cherries, berry compote alongside earth, mineral notes. Palate savoury, tannins promise long future.’
– **Platter’s SA Wine Guide 2019, 4.5* (94/100)**

‘There are two Windansea bottlings in 2017 – this is the larger of the pair – from the same 2.5-hectare block. It’s a powerful Pinot from north-facing vines on clay, with 40% whole bunches adding more structure. Serious, complex stuff. 2020–28.’
– **Tim Atkin MW, SA Special Report 2018, 93/100**

72

Storm Wines

Vrede Chardonnay, 2015

750ml 6 (1 x 6) 750ml

Vrede Chardonnay – or Peace Chardonnay – hails from a northeast-facing slope in the Hemel-en-Aarde Valley with low-vigour, stony, clay-rich Bokkeveld shale soil.

R7 000 – 9 000



73

Storm Wines

Vrede Chardonnay, 2015

1500ml 2 (1 x 2) 1500ml

R5 000 – 7 000



Storm Wines

Vrede Chardonnay, 2015

CRITIC RATINGS

‘Located on clay soils on a north-facing slope, this vineyard tends to do best in cool vintages. For all that, it’s done pretty well in its maiden harvest at Storm. Basket-pressed and naturally fermented, this is tight, focused and refreshing – more Saint Aubin than Meursault perhaps.’

– Tim Atkin MW, SA Special Report 2016, 92/100

‘2015 eloquent yet understated in its character and intensity, with floral and liquorice notes as well as citrus and oatmeal. Fresh and silky, harmonious and elegant, with a very long finish. 25% new oak; natural ferment. A long, fine future ahead of it.’

– Platter’s SA Wine Guide 2017, 4.5*

74
Storm Wines
Vrede Chardonnay, 2016
750ml 6 (1 x 6) 750ml
Vrede Chardonnay – or Peace
Chardonnay – hails from a
northeast-facing slope in the
Hemel-en-Aarde Valley with
low-vigour, stony, clay-rich
Bokkeveld shale soil.
R6 000 – 8 000



75
Storm Wines
Vrede Chardonnay, 2016
1500ml 2 (1 x 2) 1500ml
Vrede Chardonnay – or Peace
Chardonnay – hails from a
northeast-facing slope in the
Hemel-en-Aarde Valley with
low-vigour, stony, clay-rich
Bokkeveld shale soil.
R5 000 – 8 000



Storm Wines
Vrede Chardonnay, 2016

CRITIC RATINGS

‘Creamed yellow apple, pear and green fig notes glide along, inlaid with suave warm brioche and hazelnut accents. On the flattering side, but with cut and drive.’
– James Molesworth, Wine Spectator, 92/100 (Apr2018)

‘Real aromatic and flavour complexity on 2016 from Hemel-en-Aarde Valley – floral, stonefruit, oatmeal, butterscotch, citrus among what’s to be found. But restrained, with subtle intensity, stony and silky elegance; fine, balanced mineral acidity for years of development.’
– Platter’s SA Wine Guide 2018, 4.5* (92/100)

‘Purchased from JF Lotter’s comparatively youthful vineyard on heavy clay and shale soils in the Hemel en Aarde Valley, this is richer and more viscous than the début release in 2015, but has the same precision and focus, with spicy, passion fruit and citrus notes and texture form 50% malolactic.’
– Tim Atkin MW, SA Special Report 2017, 93/100

76
Storm Wines
Vrede Chardonnay, 2017
 750ml 6 (1 x 6) 750ml
 Vrede Chardonnay – or Peace
 Chardonnay – hails from a
 northeast-facing slope in the
 Hemel-en-Aarde Valley with
 low-vigour, stony, clay-rich
 Bokkeveld shale soil.
 R6 000 – 8 000



77
Storm Wines
Vrede Chardonnay, 2017
 1500ml 2 (1 x 2) 1500ml
 R5 000 – 8 000



Storm Wines
Vrede Chardonnay, 2017

CRITIC RATINGS

‘Salted limes, marmalade, buttered rye, lanolin and river pebbles. The palate has subtle flinty notes adding complexity to the matured citrus, with persistent acidity lifting the creamy mouth-feel. Complete, classy, and ready to be enjoyed.’
 – Higgo Jacobs (Feb 2022)

‘Usual aromatic and flavour complexity on 2017 from Hemel-en-Aarde Valley: floral, stonefruit, oatmeal, orange peel. Subtly powerful palate, stony and silky, with fine lemony acid; the 25% new oak only supportive. Enduring, deeply satisfying.’
 – Platter’s SA Wine Guide 2019, 4.5* (93/100)

‘Acid levels were high in 2017 – partly because of diurnal variation – so Hannes Storm put this through 80% malolactic. Naturally fermented, it’s a focused, subtle, toasty Chardonnay with good viscosity and noticeable freshness and zip. 2019–23.’
 – Tim Atkin MW, SA Special Report 2018, 94/100

78

Storm Wines

Vrede Chardonnay, 2018

750ml 6 (1 x 6) 750ml

Vrede Chardonnay – or Peace Chardonnay – hails from a northeast-facing slope in the Hemel-en-Aarde Valley with low-vigour, stony, clay-rich Bokkeveld shale soil.

R6 000 – 8 000



79

Storm Wines

Vrede Chardonnay, 2018

1500ml 2 (1 x 2) 1500ml

R5 000 – 8 000



Storm Wines

Vrede Chardonnay, 2018

CRITIC RATINGS

‘Has house’s fine acidity, deft touch new oak (22%) and subtle flavours. 2018 more citrus toned than previous stonefruit and oatmeal; attractive oxidative notes and saline conclusion. Barrel fermented/aged 8 months on lees.’
– *Platter’s SA Wine Guide 2020, 4.5** (93/100)

‘Planted with the CY95 clone on an outcrop of shale at the top of the Vrede block, this is a low-yielding site that makes wines that combine weight with freshness and acidity. Stylishly oaked and naturally fermented, it has the leesy complexity and texture of a top Meursault Perrières. 2020–26.’
– *Tim Atkin MW, SA Special Report 2019, 94/100*

80
Storm Wines
Vrede Pinot Noir, 2012
 750ml 3 (1 x 3) 750ml
 Vrede Pinot Noir hails from a steep, northeast-facing slope in the Hemel-en-Aarde Valley with low-vigour, stony, clay-rich Bokkeveld shale soil.
R4 500 – 7 000

81
Storm Wines
Vrede Pinot Noir, 2013
 750ml 3 (1 x 3) 750ml
R4 500 – 7 000



Storm Wines
Vrede Pinot Noir

CRITIC RATINGS

2012
 ‘Hemel-en-Aarde Valley origin, similar to Moya’s except for 25% new oak, more ripeness. 12 has classic tones, spice & red berries, notes of white pepper, earth. Palate is bright & refreshing, streamlined.’
 – **Platter’s SA Wine Guide 2015, 4***

‘The 2012 Pinot Noir Vrede includes 25% new barrels (apparently the cooper made the staves with different toasting and grain.) It is darker in color and clearly in possession of more fruit intensity with dark cherries, blackcurrant pastille and a touch of violet. The palate is medium-bodied with succulent, ripe tannins, the alcohol coming through more here (13.8%) with a sense of opulence allied with finesse toward the finish. This is (predictably) an impressive debut.’
 – **Neal Martin, Wine Advocate (October 2014), 92/100**

‘Dark and plush, with deliciously succulent plum, blackberry coulis and black cherry sauce flavors supported by subtle singed cinnamon and graphite notes. The iron-laced finish stretches out admirably. Drink now through 2017. 250 cases made’
 – **Wine Spectator (May 2016), 92/100**

2013
 ‘Different site (Hemel-en-Aarde Valley single-vineyard), 30% new oak, make 13 (4.5*) sturdier than Moya but equally fine, complex. Meaty, peppery red fruit aromas, flavours. Characterful, with enlivening acidity & minerality, similar admirable focus to streamlined 12’
 – **Platter’s SA Wine Guide 2016, 4.5***

‘100% 115 clone on clay, near Hamilton Russell. Planted first in 2008. Super charming with refined tannins and real edginess. Less obviously sweet than the Moyas. Great structure. Very grown-up. Very pure finish.’
 – **Jancis Robinson (September 2015), 17/20**

‘Features a solid core of lightly mulled cherry and blackberry fruit, with hints of black tea, singed cinnamon and sous-bois holding sway through the finish. Retains a perfumy, elegant feel ... 350 cases made.’
 – **Wine Spectator (May 2016), 92/100**

82
Storm Wines
Vrede Pinot Noir, 2014
750ml 3 (1 x 3) 750ml
Vrede Pinot Noir hails from a steep, northeast-facing slope in the Hemel-en-Aarde Valley with low-vigour, stony, clay-rich Bokkeveld shale soil.
R4 500 – 7 000

83
Storm Wines
Vrede Pinot Noir, 2015
750ml 3 (1 x 3) 750ml
R4 500 – 7 000

84
Storm Wines
Vrede Pinot Noir, 2015
750ml 3 (1 x 3) 750ml
R4 500 – 7 000



Storm Wines
Vrede Pinot Noir

CRITIC RATINGS

2014
‘Light red colour only just starting to fade into garnet on appearance. Herbal nuance to root beer and red fruit. The palate is amazingly youthful, showing off bright fruit with the sweet herbs and tilled earth. Light and elegant, showing off the cool vintage, with earthy notes accentuated by the wet conditions. Ready to be enjoyed, with legs to keep further comfortably.’
– Higgo Jacobs (Feb 2022)

‘Soft earthy spice and sweet cured-bacon aromas are at the front of the bouquet here, with supporting fruit tones of brambly berries, wild strawberry, peach pit, fruit cake, sweet smoke and rooibos. There’s a real mélange of aromas and flavors here, just stunning, with more nuance and complexity discovered with each sniff and sip. Bright, snappy red berry fruits abound on the palate, while hints of sous bois, tree bark and cocoa nib unfold on the close. It’s medium in weight, well-composed and balanced, with a smooth, suave and silky texture.’
– Wine Enthusiast Magazine, 94/100 and Editor’s Choice

2015
‘More weight and concentration here, with lots of tightly packed red and dark fruit offset by firm, robust tannins and bright acidity. It retains the signature elegance of Storm, but certainly showing the power of the 2015 vintage. Still an infant, enjoy now-2025.’
– Higgo Jacobs (Feb 2022)

‘There’s a herbal edge right upfront on the nose of this wine, with some earthy foliage, raw cocoa nib and fresh-tilled dirt aromas that are amply supported by a fruity core of red cherry flesh, plum, wild strawberry and raspberry. The bright palate offers beautiful mineral-ity, as pristine, pure red-fruit flavors are coupled with a saline burst on the midpalate and through the close. Fine tannins lend a subtle structure. It’s well balanced, focused and precise, a gorgeous wine that is hard to resist now and should evolve well through 2028.’
– Wine Enthusiast Magazine 2019, 95/100 and position #51 on Top 100 wines of 2019.

‘Dark cherries and forest floor on brooding 2015 from Hemel-en-Aarde Valley. Intense, intriguing and mysterious, and a severer structure of acid and tannin than siblings, needing a good few years for dense, deep fruit to blossom. Huge potential. All these spontaneous ferment, no fining/filtration.’
– Platter’s SA Wine Guide 2018, 4.5* (94/100)

‘The vines are comparatively young at this Hemel-en-Aarde Valley site, but they make special Pinot. Showing less tannin and firmness than its neighbours, but this is still denser than the more ethereal 2014. The oak needs to settle into the wine, which it will do, given its structure and concentration. Drink: 2017–24.’
– Tim Atkin MW, SA Special Report 2016, 93/100

85
Storm Wines

Vrede Pinot Noir, 2016

750ml 6 (1 x 6) 750ml

Vrede Pinot Noir hails from a steep, northeast-facing slope in the Hemel-en-Aarde Valley with low-vigour, stony, clay-rich Bokkeveld shale soil.

R7 000 – 9 000



86
Storm Wines

Vrede Pinot Noir, 2016

1500ml 2 (1 x 2) 1500ml

R5 000 – 8 000



Storm Wines
Vrede Pinot Noir, 2016

CRITIC RATINGS

‘Vibrant & primary, still showing dusty vigour and upfront cool Pinot fruit. A line of acidity and chalky tannins on the palate is very promising and needs time to mellow. Super youthful. Drink 2023–2026.’
– Higgo Jacobs (Feb 2022)

‘Pronounced black and rooibos tea characteristics drive the nose of this earthy, herbal wine, with supporting tones of dried red cherry and raspberry as a fruity accompaniment. It’s medium in feel, like crushed silk, with fine yet supportive tannins that lend pleasant grip to the palate and carry through to the earthy, tea-centric finish that brings you back to that first sniff. It’s a lovely, complex package.’
– Lauren Buzzeo, *Wine Enthusiast*, (May 2021), 93/100

‘Deeply intense, brooding 2016 from Hemel-en-Aarde Valley, with a fruity-savoury density seething with pent-up energy. The most overt structure of acid and, especially, tannin of the 3 Pinots, also the most complete-seeming. Needs many years to start delivering on its potential!’
– Platter’s SA Wine Guide 2019, 4.5* (93/100)

‘Vrede tends to make the most compact of Hannes Storm’s three single vineyard Pinots, with more bass notes and concentration. Made with the 115 clone planted on clay-rich soils, it nods towards Gevrey-Chambertin, with impressive grip and darker berry fruit. 2018–26.’
– Tim Atkin MW, *SA Special Report* 2017, 95/100

87
Storm Wines
Vrede Pinot Noir, 2017
750ml 6 (1 x 6) 750ml
Vrede Pinot Noir hails from a steep, northeast-facing slope in the Hemel-en-Aarde Valley with low-vigour, stony, clay-rich Bokkeveld shale soil.
R7 000 – 9 000



88
Storm Wines
Vrede Pinot Noir, 2018
750ml 6 (1 x 6) 750ml
R7 000 – 9 000



Storm Wines
Vrede Pinot Noir

CRITIC RATINGS

2017
‘A subtle touch of oak gently perched on top of juicy straw-berry and cherry fruit, waiting to integrate. Finesse and complexity on the classy 2017 that has layers of flavour unfolding in the glass. The 2017 is getting better, patience will be awarded.’
– Higgs Jacobs (Feb 2022)

‘Very pale ruby. Marked, bright fruit and floral aromatics, yet with a savoury, spice and flint undertow. Juicy, vibrant and delicate yet structured. Lovely length.’
– Tim Jackson MW, JancisRobinson.com, 17.5/20 (Dec 2019)

‘Hallmark fruity-savoury persistence, brooding intensity from bouquet to finish on Hemel-en-Aarde Valley offering. Compact body, latent power from clay-rich, low-vigour Bokkeveld soil most noticeable on 2017. Deserves 5+ years cellaring to deliver on potential. New oak 28%. Also in 1.5L. Natural ferment, as all the wines; unfined/filtered as all reds.’
– Platter’s SA Wine Guide 2020, 4.5* (94/100)

‘Another stunning Pinot from Hannes Storm, who makes some of the best examples of the grape in the Cape. This is on shale-derived clay and has produced a wonderfully aromatic

red in 2017: lifted, floral and serene with fine tannins, supple red berry fruit and some tannic support. 2019–25.’
– Tim Atkin MW, SA Special Report 2018, 95/100

2018
‘Hallmark fruity-savoury persistence, brooding intensity from bouquet to finish on Hemel-en-Aarde Valley offering. Compact body, latent power from clay-rich, low-vigour Bokkeveld soil most noticeable on 2017; 2018 showing more of the vineyard’s overt acid character. Both deserve 5+ years cellaring to deliver on potential. New oak 28% and 30% respectively. Also in 1.5L. Natural ferment, as all the wines; unfined/filtered as all reds.’
– Platter’s SA Wine Guide 2020, 4.5* (94/100)

‘How time has flown! This is now the eighth release of Vrede, grown on clay rich soils at the lower end of the Hemel-en-Aarde Valley. North-facing at the top of the slope, it’s Hannes Storm’s plushest Pinot, with good density and structure, artfully integrated oak and an earthy bass note. 2021–28.’
– Tim Atkin MW, SA Special Report 2019, 96/100

89

Storm Wines

Vrede Pinot Noir, 2018

1500ml 2 (1 x 2) 1500ml

Vrede Pinot Noir hails from a steep, northeast-facing slope in the Hemel-en-Aarde Valley with low-vigour, stony, clay-rich Bokkeveld shale soil.

R5 000 – 8 000



90

Storm Wines

Moya's Pinot Noir, 2014

750ml 3 (1 x 3) 750ml

Moya's Pinot Noir hails from a northern slope in the Upper Hemel-en-Aarde Valley. Organically farmed, the vineyard is cluttered with round pebbles on the soil surface with underlying decomposed granite. Latin for 'fire', ignis refers to the fact that granite is an igneous rock formation – 'from fire to stone'.

R4 500 – 6 000



Storm Wines

Vrede Pinot Noir, 2018

CRITIC RATINGS

'Hallmark fruity-savoury persistence, brooding intensity from bouquet to finish on Hemel-en-Aarde Valley offering. Compact body, latent power from clay-rich, low-vigour Bokkeveld soil most noticeable on 2017; 2018 showing more of the vineyard's overt acid character. Both deserve 5+ years cellaring to deliver on potential. New oak 28% and 30% respectively. Also in 1.5L. Natural ferment, as all the wines; unfinned/filtered as all reds.'

– **Platter's SA Wine Guide 2020, 4.5***
(94/100)

'How time has flown! This is now the eighth release of Vrede, grown on clay rich soils at the lower end of the Hemel-en-Aarde Valley. North-facing at the top of the slope, it's Hannes Storm's plushest Pinot, with good density and structure, artfully integrated oak and an earthy bass note. 2021–28.'

– **Tim Atkin MW, SA Special Report 2019, 96/100**

Storm Wines

Moya's Pinot Noir, 2014

CRITIC RATINGS

'Rooibos and honey aromas lead into plum and baked cherries. This is ready to drink, offering lots of soft harmony and integrity of structure. Mature in flavour profile, but graceful and wonderfully poised.'

– **Higgo Jacobs (Feb 2022)**

'Both Pinots very youthful, their true character needing years to emerge. This Upper Hemel-en-Aarde Valley 2014 a little brighter mid-2016, less imposing, more fragrant charm. Yet also with earthy, undergrowth elements and some dark depths. 20% new oak.'

– **Platter's SA Wine Guide 2017, 4.5***

'Subtle Thin Mint and mentholated herb notes mingle with earthy spiced tea and rooibos against the clean, focused red-berry and -cherry fruit tones on the nose of this attractive wine. There are hints of dried orange peel, red currant and just a kiss of fresh lavender. Medium-minus in weight, it's silky and ethereal in feel, with a lightness of being yet such sincere and serious intent and focus. It delivers bright flavors of snappy red cherry and currant, with oodles of sweet spice and lifted herbal tones that carry long into the finish.'

– **Lauren Buzzeeo, Wine Enthusiast, 93/100 (MaR2019)**

91
Storm Wines
Ignis Pinot Noir, 2015
750ml 3 (1 x 3) 750ml
Ignis Pinot Noir hails from a northern slope in the Upper Hemel-en-Aarde Valley. Organically farmed, the vineyard is cluttered with round pebbles on the soil surface with underlying decomposed granite. Latin for ‘fire’, ignis refers to the fact that granite is an igneous rock formation – ‘from fire to stone’.
R4 500 – 6 000



92
Storm Wines
Ignis Pinot Noir, 2016
750ml 6 (1 x 6) 750ml
R7 000 – 9 000



Storm Wines
Ignis Pinot Noir

CRITIC RATINGS

2015
“Lovely marriage struck here between fresh fruit and floral perfume on the one side, with tertiary complexity in forest floor and new leather settling in. Lots of power and robust structure, but I would argue that the 2015 Ignis is at its peak for drinking while it retains this bold, crunchy fruit component.”
– Higgs Jacobs (Feb 2022)

‘Previously ‘Moya’s’. These Pinots all youthful and less immediately ingratiating than many. This Upper Hemel-en-Aarde 2015 has more obvious fragrant charm and less severe than the others, with bright raspberry notes to start, sour cherry to finish. Elegant lightness of structure.’
– Platter’s SA Wine Guide 2018, 4.5* (93/100)

‘Formerly labelled as Moya’s Pinot Noir, this is richer and more concentrated than the comparatively delicate 2014, exhibiting greater texture and palate weight. Spicy, rose petal and wild strawberry notes are complemented by tangy acidity, subtle oaking and a haunting finish. One of the Cape’s very best Pinots. Drink: 2016–23.’
– Tim Atkin MW, SA Special Report 2016, 96/100

2016
‘Light ruby appearance with an orange hint. Stalky spice over tight cranberry and sour raspberry with sweet mint and

rooibos. Soft and mellow on the palate, starting to show maturity with tertiary pruny hints, but with the typical lasting freshness from the property.’
– Higgs Jacobs (Feb 2022)

“Such wonderful fruit that really merits comparison with Côte de Beaune, or great Californian equivalents. Smoky, savoury, layered and perfumed and enchanting. Lovely herby thread throughout.”
– Richard Hemming MW, JancisRobinson.com, 17.5/20 (Sept 2018)

Lifted perfume and pure-fruited charm with forest floor undertone on 2016 from Upper Hemel-en-Aarde. Like previous vintages, the easiest in youth, the least severely structured, of a range that needs years to start showing its best. Splendidly balanced, long-linging.’
– Platter’s SA Wine Guide 2019, 4.5* (94/100)

‘This cool, alluvial, granite-based site makes Hannes Storm’s most aromatic Pinot Noir, with 10% whole bunches adding extra perfume and spice. This is a very elegant, harmonious wine that wouldn’t look out of place in a line-up of Chambolle-Musigny Premiers Crus. Raspberry and wild strawberry flavours are underpinned by fresh acidity and sensitively used oak. One of the Cape’s outstanding Pinots. 2018–25.’
– Tim Atkin MW, SA Special Report 2017, 96/100

93
Storm Wines
Ignis Pinot Noir, 2016
1500ml 2 (1 x 2) 1500ml
Ignis Pinot Noir hails from a northern slope in the Upper Hemel-en-Aarde Valley. Organically farmed, the vineyard is cluttered with round pebbles on the soil surface with underlying decomposed granite. Latin for ‘fire’, ignis refers to the fact that granite is an igneous rock formation – ‘from fire to stone.’

R5 000 – 8 000



94
Storm Wines
Ignis Pinot Noir, 2017
750ml 6 (1 x 6) 750ml
R7 000 – 9 000



Storm Wines
Ignis Pinot Noir

CRITIC RATINGS

2016
‘Light ruby appearance with an orange hint. Stalky spice over tight cranberry and sour raspberry with sweet mint and rooibos. Soft and mellow on the palate, starting to show maturity with tertiary pruny hints, but with the typical lasting freshness from the property.’
– Higgs Jacobs (Feb 2022)

‘Such wonderful fruit that really merits comparison with Côte de Beaune, or great Californian equivalents. Smoky, savoury, layered and perfumed and enchanting. Lovely herby thread throughout.’
– Richard Hemming MW, JancisRobinson.com, 17.5/20 (Sept 2018)

‘Lifted perfume and pure-fruited charm with forest floor undertone on 2016 from Upper Hemel-en-Aarde. Like previous vintages, the easiest in youth, the least severely structured, of a range that needs years to start showing its best. Splendidly balanced, long-lingering.’
– Platter’s SA Wine Guide 2019, 4.5* (94/100)

‘This cool, alluvial, granite-based site makes Hannes Storm’s most aromatic Pinot Noir, with 10% whole bunches adding extra perfume and spice. This is a very elegant, harmonious wine that wouldn’t look out of place in a line-up of Chambolle-Musigny Premiers Crus. Raspberry and wild strawberry flavours are underpinned by fresh acidity and sensitively used oak. One of the Cape’s outstanding Pinots. 2018–25.’
– Tim Atkin MW, SA Special Report 2017, 96/100

2017
‘Sweet herbal top notes with creamy tea, strawberry jam and rhubarb. The class once again is captured in the palate that has fine layers of flavour combining earth, herbs and fruit, all wrapped in silky, filigree tannins and lively acidity.’
– Higgs Jacobs (Feb 2022)

The 3 Storm Pinots treated identically in the cellar (except for 3% variance in new-oak portion) to express terroir. From more light-structured decomposed granite of Upper Hemel-en-Aarde, Ignis more fruit forward than siblings and thus more approachable in youth but with such precise acid tension it could easily prove the most long-lived. Long-lingering 2017 unshowy but similar honed athletic frame. Both 30% new wood. Also in magnum.’
– Platter’s SA Wine Guide 2020, 5* (97/100)

‘Ignis comes from a north-facing slope on decomposed granite soils and is the lightest and most delicate of Hannes Storm’s excellent trio of Pinot Noirs. Subtle, succulent and refined, it has beautiful poise, nuance and complexity. 2020–26.’
– Tim Atkin MW, SA Special Report 2018, 96/100

95
Storm Wines
Ignis Pinot Noir, 2018
750ml 6 (1 x 6) 750ml
Ignis Pinot Noir hails from a northern slope in the Upper Hemel-en-Aarde Valley. Organically farmed, the vineyard is cluttered with round pebbles on the soil surface with underlying decomposed granite. Latin for 'fire', ignis refers to the fact that granite is an igneous rock formation – 'from fire to stone'.
R7 000 – 9 000



96
Storm Wines
Ignis Pinot Noir, 2018
1500ml 2 (1 x 2) 1500ml
R5 000 – 8 000



Storm Wines
Ignis Pinot Noir, 2018

CRITIC RATINGS

'The 3 Storm Pinots treated identically in the cellar (except for 3% variance in new-oak portion) to express terroir. From more light-structured decomposed granite of Upper Hemel-en-Aarde, Ignis more fruit forward than siblings and thus more approachable in youth but with such precise acid tension it could easily prove the most long-lived. 2018 exceptional pure-fruited charm; long-lingering 2017 (97 pts) unshowy but similar honed athletic frame. Both 30% new wood. Also in magnum.'
– Platter's SA Wine Guide 2020, 5* (96/100)

'Ignis comes from a north-facing site opposite the Newton Johnsons' cellar, located on stony granite soils. Grippy, sappy and crunchy, with the freshness of a cooler slope, refined tannins, notes of fynbos and cassis leaf and a long, tapering finish. Classy Pinot. 2020–26.'
– Tim Atkin MW, SA Special Report 2019, 95/100

97
Storm Wines
Ridge Pinot Noir, 2015
750ml 3 (1 x 3) 750ml
Ridge Pinot Noir hails from a cool, eastern slope in the Hemel-en-Aarde Ridge with low-vigour, stony, clay-rich Bokkeveld shale soil.
R4 000 – 6 000

98
Storm Wines
Ridge Pinot Noir, 2015
750ml 3 (1 x 3) 750ml
R4 000 – 6 000

99
Storm Wines
Ridge Pinot Noir, 2016
750ml 6 (1 x 6) 750ml
R7 000 – 9 000



Storm Wines
Ridge Pinot Noir

CRITIC RATINGS

2015
‘Maiden vintage. Blood orange peel, pomegranate, star anise. Succulent and crunchy, with immaculate life. Chalky tannins, vibrant acidity. This is the most youthful and feminine of the 2015’s showing off the cool site. A personal favourite.’
– Higgs Jacobs (Feb 2022)

‘There’s earth, raspberry and even dark chocolate notes on 2015 from Hemel-en-Aarde Ridge. Richly textured, its intense cherry depth of flavour supported by balanced structure of light tannin and integrated acidity. Yet there’s already a light ethereal element. Finely calculated oak on all these – 20–25% new French, 11 months.’
– Platter’s SA Wine Guide 2018, 4,5* (93/100)

‘Made with Pinot purchased from La Vierge’s substantial holdings on the Ridge, this is the second release of this 150 case bottling. The freshness of the sea breeze influence combines appealingly with the 10% whole bunch spice and redcurrant and black cherry fruit.’
– Tim Atkin MW, SA Special Report 2016, 93/100

2016
‘More robust, angular and incomplete than 2015, needing time to integrate. But the promise of pedigree is there to allow the wine the benefit of time. A hallmark of the Storm Pinots is brightness and freshness across the range and vintages. Allow 2–3 years for the 2016 Ridge.’
– Higgs Jacobs (Feb 2022)

‘Another brooder needing time. 2016 deep, sweet perfumed fruit with savoury complexity, yet fairly austere in youth. Touch less mid-palate conviction than Vrede, and less tannic. These all 25% new oak. Pinots all natural ferment, 10–15% whole bunch, no fining/filtration. Also in magnum.’
– Platter’s SA Wine Guide 2019, 4,5* (93/100)

‘Appropriately enough, Ridge comes from a cool, late-picked site at 340 metres on the Hemel en Aarde Ridge, influenced by cool sea breezes. It’s a taut, tight, tangy Pinot Noir, with crunchy black cherry fruit, some clove spice from 10% whole bunches and a saline undertone. 2019–25.’
– Tim Atkin MW, SA Special Report 2017, 94/100

100
Storm Wines

Ridge Pinot Noir, 2016

1500ml 2 (1 x 2) 1500ml
Ridge Pinot Noir hails from a cool, eastern slope in the Hemel-en-Aarde Ridge with low-vigour, stony, clay-rich Bokkeveld shale soil.

R5 000 – 8 000



101
Storm Wines

Ridge Pinot Noir, 2017

750ml 6 (1 x 6) 750ml

R7 000 – 9 000



Storm Wines
Ridge Pinot Noir

2016

‘More robust, angular and incomplete than 2015, needing time to integrate. But the promise of pedigree is there to allow the wine the benefit of time. A hallmark of the Storm Pinots is brightness and freshness across the range and vintages. Allow 2–3 years for the 2016 Ridge.’
– Higgs Jacobs (Feb 2022)

‘Another brooder needing time. 2016 deep, sweet perfumed fruit with savoury complexity, yet fairly austere in youth. Touch less mid-palate conviction than Vrede, and less tannic. These all 25% new oak. Pinots all natural ferment, 10–15% whole bunch, no fining/filtration. Also in magnum.’
– Platter’s SA Wine Guide 2019, 4.5* (93/100)

‘Appropriately enough, Ridge comes from a cool, late-picked site at 340 metres on the Hemel en Aarde Ridge, influenced by cool sea breezes. It’s a taut, tight, tangy Pinot Noir, with crunchy black cherry fruit, some clove spice from 10% whole bunches and a saline undertone. 2019–25’
– Tim Atkin MW, SA Special Report 2017, 94/100

2017

‘Savoury nuance to the red berries, liquorice and a touch of cola. The savoury line follows on the palate that has mouth-watering, lively tight fruit, supported by tilled earth and complementing soy. Ridge is the most complex and long-lived in the range. Stock up.’
– Higgs Jacobs (Feb 2022)

‘From clay-rich, low-crop Hemel-en-Aarde Ridge soil, this typically more unsettled in youth, all elements finely judged but needing year or 2 to harmonise. 2017 (27% new oak) has a pleasant ferrous nuance.’
– Platter’s SA Wine Guide 2020, 4.5* (94/100)

‘Ridge comes, obviously enough, from the Hemel-en-Aarde Ridge and is made with the youngest vines in the Storm portfolio. Grown at 330 metres of Bokkeveld shale, it’s spicy and refreshing, showing pomegranate and red berry fruit and some underlying grip. 2020–25’
– Tim Atkin MW, SA Special Report 2018, 94/100

102

Storm Wines

Ridge Pinot Noir, 2018

750ml 6 (1 x 6) 750ml

Ridge Pinot Noir hails from a cool, eastern slope in the Hemel-en-Aarde Ridge with low-vigour, stony, clay-rich Bokkeveld shale soil.

R7 000 – 9 000



103

Storm Wines

Ridge Pinot Noir, 2018

1500ml 2 (1 x 2) 1500ml

R5 000 – 8 000



Storm Wines

Ridge Pinot Noir, 2018

CRITIC RATINGS

‘From clay-rich, low-crop Hemel-en-Aarde Ridge soil, this typically more unsettled in youth, all elements finely judged but needing a year or 2 to harmonise. 2018’s black cherry and plum fruit brushed with savoury oak spice (28% new).’

– Platter’s SA Wine Guide 2020, 4.5* (94/100)

‘Block 1 at La Vierge is the source of this Ridge Pinot Noir, planted in 2010 with clones 113 and 115. It’s the lightest, tautest and most aromatic of Hannes’ Storm’s enviable range, with herbal, scented, wild strawberry fruit and a dusting of whole bunch spices. 2021–27.’

– Tim Atkin MW, SA Special Report 2019, 94/100

