



Tuesday, 13 April 2021
Session 5 at 11am

Modern, Post-War and Contemporary Art

Day Sale
Lots 401–470

Lot 448 Larry Scully, *The Madonna and Child of Soweto* (detail)



401



402



403



404

401

Tinus de Jongh

SOUTH AFRICAN 1885-1942

The Twelve Apostles

signed
oil on canvas
45 by 63cm

R40 000 - 60 000

402

Hugo Naudé

SOUTH AFRICAN 1868-1941

Table Bay, South Africa

signed with the artist's initials; signed,
dated 1922 and inscribed with the
title on a label adhered to the reverse
oil on artist's board
13,5 by 22cm

R40 000 - 60 000

403

Hugo Naudé

SOUTH AFRICAN 1868-1941

Jonkershoek Peaks, Stellenbosch

signed and inscribed with the title on
a label adhered to the reverse, further
inscribed with the provenance on
another label adhered below
oil on panel
23 by 37cm

R50 000 - 70 000

PROVENANCE

Acquired from the artist by Wynand
Louw, 1912.
Donated to the church hostel,
Transvalia, Heidelberg by Mr Louw.
Acquired by the current owner's
father after the church hostel was
sold, circa 1966-1968.

404

Jan Ernst Abraham Volschenk

SOUTH AFRICAN 1853-1936

*The Road in Cogmanskloof,
Montagu*

signed and dated 1925; signed,
dated and inscribed with the title
on the reverse
oil on canvas
59,5 by 65cm

R40 000 - 60 000

PROVENANCE

Stephan Welz & Co, Johannesburg,
18 April 2005, lot 50.
Private Collection.



405



406



407



408

405

Hugo Naudé

SOUTH AFRICAN 1868-1941

Breede River Landscape

signed
oil on paper laid down on card
25,5 by 35,5cm

R60 000 - 80 000

406

Ruth Prowse

SOUTH AFRICAN 1883-1967

Hartenbosch

signed with the artist's monogram;
inscribed with the artist's name and
the title on a South African National
Gallery label adhered to the reverse
oil on canvasboard
27 by 41cm

R30 000 - 50 000

PROVENANCE

Stephan Welz & Co, Cape Town,
19 February 2008, lot 527.
Private Collection.

EXHIBITED

South African National Gallery, Cape
Town, *Florence Zerffi and Ruth Prowse
Retrospective*, May 1996.

407

Frans Oerder

SOUTH AFRICAN 1867-1944

*Northern Transvaal
(Near Pretoria)*

signed; inscribed with the title on
a label adhered to the reverse
oil on canvas
34,5 by 61,5cm

R40 000 - 60 000

408

Erik Laubscher

SOUTH AFRICAN 1927-2013

View through the Trees

signed and dated '46
oil on canvas
44,5 by 60cm

R20 000 - 30 000



409



410



411



412

409

Gregoire Boonzaier

SOUTH AFRICAN 1909-2005

A Farmhouse and Vineyards

signed and dated 1962

oil on canvas

37,5 by 50,5cm

R50 000 - 70 000

PROVENANCE

Stephan Welz & Co in Association with Sotheby's, Johannesburg, 17 May 1999, lot 281.

The Tasso Foundation Collection of Important South African Art assembled by the Late Giulio Bertrand of Morgenster Estate.

410

Gregoire Boonzaier

SOUTH AFRICAN 1909-2005

Huisies en Berge, Genadendal, Kaap

signed and dated 1938; signed and inscribed with the title on the reverse

oil on board

30 by 39cm

R35 000 - 50 000

411

David Botha

SOUTH AFRICAN 1921-1995

Rainy Day Street Scene

signed and dated '82

oil on canvas laid down on board

39 by 49,5cm

R60 000 - 80 000

412

David Botha

SOUTH AFRICAN 1921-1995

Die Pienk Huis

signed and dated '70; inscribed with the title on the reverse

oil on board

49,5 by 75cm

R30 000 - 50 000

413



413

Paul du Toit

SOUTH AFRICAN 1922-1986

Bos Landskap

signed

oil on canvas laid down on board

43 by 54,5cm

R40 000 - 60 000

414



414

Paul du Toit

SOUTH AFRICAN 1922-1986

Rots Landskap

signed

oil on canvas laid down on board

39,5 by 59,5cm

R50 000 - 70 000

415

Paul du Toit

SOUTH AFRICAN 1922-1986

Breaking Light

signed and dated '77

oil on canvas

66 by 79cm

R60 000 - 80 000

415





416



417



418



419

416

Maud Sumner

SOUTH AFRICAN 1902-1985

Namib Desert

signed; inscribed with the title on a
Johans Borman Fine Art Gallery label
adhered to the reverse

oil on canvas
64,5 by 91cm

R70 000 - 90 000

417

Maud Sumner

SOUTH AFRICAN 1902-1985

Namibian Landscape

signed
oil on canvas
48 by 63cm

R70 000 - 100 000

418

Walter Meyer

SOUTH AFRICAN 1965-2017

Kalahari Landscape

signed with the artist's initials and
dated 00+2
oil on canvas
49 by 64cm

R40 000 - 60 000

419

Walter Meyer

SOUTH AFRICAN 1965-2017

Kalahari Oasis

signed with the artist's initials and
dated 02; inscribed with the title on
the stretcher
oil on canvas
49 by 63,5cm

R40 000 - 60 000



420



421



422



423

420

David Botha

SOUTH AFRICAN 1921-1995

Wheatfields, Botrivier

signed and dated '74
oil on canvas laid down on board
60,5 by 90,5cm

R60 000 - 80 000

421

Ruth Prowse

SOUTH AFRICAN 1883-1967

Mielie Harvest, S. Rhodesia

signed with the artist's monogram
and dated '45; inscribed with the title
on the reverse
oil on canvas laid down on card
33 by 50cm

R30 000 - 50 000

422

Harold Voigt

SOUTH AFRICAN 1939-

Two Children Around the Pot

signed and dated 1968
oil on canvas laid down on board
75 by 121cm

R80 000 - 120 000

423

Jean Welz

SOUTH AFRICAN 1900-1975

Donga

signed
oil on board
28,5 by 42,5cm

R40 000 - 60 000

PROVENANCE

Acquired from the artist by the
current owner's father.

424

Marjorie Wallace

SOUTH AFRICAN 1925-2005

Gathering Kelp

signed
oil on canvas
53 by 80cm

R35 000 - 50 000



424

425

Eleanor Esmonde-White

SOUTH AFRICAN 1914-2007

Washing Day in Greece

signed
oil on artist's board
29 by 39cm

R80 000 - 120 000

PROVENANCE

Stephan Welz & Co in Association with Sotheby's, Cape Town, 17 October 2007, lot 486.

The Tasso Foundation Collection of Important South African Art assembled by the Late Giulio Bertrand of Morgenster Estate.



425

426

Erik Laubscher

SOUTH AFRICAN 1927-2013

Behind Hanover Street Façade

signed and dated 73; signed, dated and inscribed with the title on the reverse
oil on canvas
51,5 by 64cm

R80 000 - 120 000

EXHIBITED

South African National Gallery, Cape Town, 1973.

South African National Gallery, Cape Town, *District Six: image and Representation: South African National Gallery*, 28 October 1995 to 25 February 1996.

LITERATURE

South African National Gallery and District Six Museum Foundation (1995) *District Six: image and Representation: South African National Gallery*, exhibition catalogue, Cape Town: District Six Museum Foundation, referenced in text and illustrated.



426

427

Marjorie Wallace

SOUTH AFRICAN 1925-2005

Verwagend

1974
signed
oil on canvas
64 by 52cm

R40 000 - 60 000

PROVENANCE

Acquired from a Marjorie Wallace solo exhibition held at the South African Art Association, Pretoria, 1979. The John Samuel and Antjie Krog Collection.

This is a portrait of Rachel Otto, Breyten Breytenbach's sister, painted in Onrus.

427



428



428

Alexander Rose-Innes

SOUTH AFRICAN 1915-1996

Two Women

signed
pastel on paper
62,5 by 48cm

R35 000 - 50 000

429

Jean Welz

SOUTH AFRICAN 1900-1975

Portrait of Ray Rabkin

signed and dated 45
oil on board
50 by 40cm

R40 000 - 60 000

Ray Rabkin was a family friend of the artist.

429



430

Jean Welz

SOUTH AFRICAN 1900-1975

Figures Dancing

signed and dated 58; inscribed with the artist's name and the title on a Strydom Gallery label adhered to the reverse

oil on canvas
44,5 by 60cm

R50 000 - 70 000

PROVENANCE

Stephan Welz & Co, in Association with Sotheby's, Johannesburg, 3 November 1997, lot 439. Private Collection.



430

431

Carl Büchner

SOUTH AFRICAN 1921-2003

Pierrot Troupe

signed
oil on canvas
90,5 by 90,5cm

R60 000 - 80 000

432

Carl Büchner

SOUTH AFRICAN 1921-2003

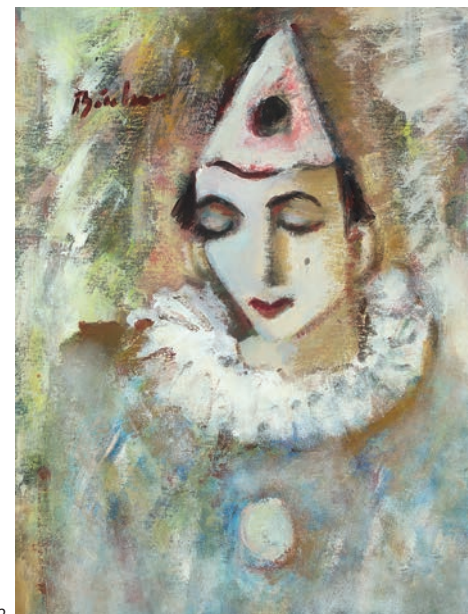
Pierrot

signed
acrylic on paper laid down on board
57,5 by 43,5cm

R30 000 - 50 000



431



432

433

Johannes Meintjes

SOUTH AFRICAN 1923-1980

Meisie met Wit Voëls

signed and dated 1975
oil on board
32 by 34cm

R40 000 - 60 000

LITERATURE

Johannes Meintjes catalogue
number 1180.



433

434

Johannes Meintjes

SOUTH AFRICAN 1923-1980

Portrait of a Boy

signed
oil on canvas
22,5 by 22,5cm

R30 000 - 50 000

PROVENANCE

Johanna Catharina Pretorius, curator,
Pretoria Art Museum and Inspector of
Schools, Transvaal, thence by descent.



434

LITERATURE

Johannes Meintjes catalogue
number 413.

435

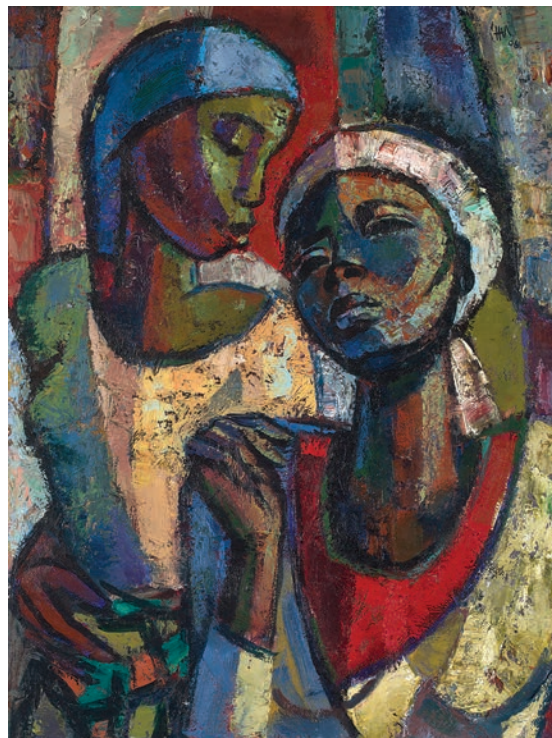
Hennie Niemann Jnr

SOUTH AFRICAN 1972-

Prelude to the Dance

signed with the artist's initials and
dated 06; signed, dated and inscribed
with the title on the reverse
oil on canvas
79 by 59cm

R70 000 - 90 000



435

436

Alfred Neville Lewis

SOUTH AFRICAN 1895-1972

Portrait of a Woman

signed
oil on panel
34,5 by 23,5cm

R40 000 - 60 000



436



437



438



439



440

437

Adriaan Boshoff

SOUTH AFRICAN 1935-2007

Daisies in a Copper Vase

signed
oil on canvas
60,5 by 90,5cm

R40 000 - 60 000

438

Adriaan Boshoff

SOUTH AFRICAN 1935-2007

Potted Azalea Plants

signed
oil on canvas laid down on board
64 by 44cm

R40 000 - 60 000

439

Cecil Higgs

SOUTH AFRICAN 1898-1986

Proteas in a Vase

signed and dated 59
oil on canvas
54,5 by 69,5cm

R30 000 - 50 000

PROVENANCE

Stephan Welz & Co in Association
with Sotheby's, Johannesburg,
4 November 1991, lot 320.
Private Collection.

440

Otto Klar

SOUTH AFRICAN 1908-1994

Magnolias in a Vase

signed
oil on board
65 by 75cm

R40 000 - 60 000

PROVENANCE

Acquired from the artist by the
current owner.



441

441

Alfred Krenz

SOUTH AFRICAN 1899-1980

*Still Life with Vegetables
and Vessels*

signed and indistinctly dated
oil on canvas
67 by 93cm

R25 000 - 35 000

442

Alexander Rose-Innes

SOUTH AFRICAN 1915-1996

Blue Urn

signed; inscribed with the artist's
name and the title on the reverse
oil on canvas
60 by 50cm

R40 000 - 60 000



442

443

Pieter van der Westhuizen

SOUTH AFRICAN 1931-2008

Still Life with Cat

signed and dated 79
oil on canvas
53 by 63,5cm

R60 000 - 80 000

LITERATURE

Leonard Schneider (1998) *Pieter van
der Westhuizen*, South Africa: Carmel
Art Publications, illustrated in colour
on page 60.



443



444

444

Fred Page

SOUTH AFRICAN 1908-1984

The Wolpe Gallery C.T.

signed, dated '71 and inscribed 'To: Joe, From: Fred, with Love ...'; inscribed with the title, medium and dedication 'With love from Fred' on a label and a Wolpe Gallery label adhered to the reverse polymer on paper laid down on board
101 by 59,5cm

R80 000 - 120 000

PROVENANCE

Joe Wolpe, Cape Town.
Strauss & Co, Cape Town, 17 March 2014, lot 728.

The Tasso Foundation Collection of Important South African Art assembled by the Late Giulio Bertrand of Morgenster Estate.

LITERATURE

Jeanne Wright and Cecil Kerbel (2011) *Fred Page: Ringmaster of the Imagination*, Port Elizabeth: Cecil Kerbel and Jeanne Wright, illustrated in colour on page 51, plate 108.



445

445

Erik Laubscher

SOUTH AFRICAN 1927-2013

Lente Graan Landskap

signed and dated '01; signed, dated, inscribed with the title and 'ref. 219' on the reverse
oil on canvas
49,5 by 64,5cm

R80 000 - 120 000



446

© The Estate of Peter Clarke | DALRO

446

Peter Clarke

SOUTH AFRICAN 1929-2014

Train Passing Through Tesselaarsdal

signed and dated 29.10.1963; inscribed 'Karoo' on the reverse
watercolour, ink and crayon on paper
27,5 by 37,5cm

R60 000 - 80 000

447

Christo Coetzee

SOUTH AFRICAN 1929-2000

Green Form

signed; signed, dated 1963 and inscribed
'Paris, 4 Rue de l'hôtel Colbert' on the
reverse

mixed media on canvas laid down
on board

60 by 75,5cm

R60 000 - 80 000

448

Larry Scully

SOUTH AFRICAN 1922-2002

*The Madonna and Child
of Soweto*

signed and dated '76

oil and collage on canvas
120,5 by 151cm

R70 000 - 100 000

PROVENANCE

A gift from the artist to the current owner.

LITERATURE

Michelle Wolff (2018) 'Madonna and Child
of Soweto: Black Life Beyond Apartheid
and Democracy' in *Political Theology*:
19(118): pages 1 - 21, referenced in the
text and illustrated throughout.

This lot quotes Larry Scully's most famous
painting, *The Madonna and Child of
Soweto* (1973), installed in the Regina
Mundi Cathedral in Rockville, Soweto. In
1973, Johannesburg's *The Star* newspaper
commissioned Scully to produce a work
to raise money for an education fund.
Scully, who came to prominence in the
1960s, was well known for his large-scale
panel paintings, notably a series installed
in the foyer of Dudley Heights, Hillbrow.
The large religious painting he delivered
depicted both Mary and Jesus as black
floating above an eye. It was acquired
by businessman Harry Oppenheimer
and donated to the cathedral. Scully's
inculturated black Madonna and
child from his Soweto painting forms
the central subject of this later work.
Produced during a troubled year in
Soweto's history, this lot sees Scully
integrate the figures into a spacious field
of radiating colours and spontaneous
brushwork typical of Scully's lyrical
abstractions.

447



448



449

Esias Bosch

SOUTH AFRICAN 1923-2010

Ceramic Tile with Bird and Flower Motifs

glazed porcelain tile with gold lustre
57,5 by 59cm

R60 000 - 80 000



449

450

Cecily Sash

SOUTH AFRICAN 1924-2019

Bird's Nest

signed and dated '56
oil on board
41 by 76cm (2)

R60 000 - 80 000

PROVENANCE

Acquired by the current owner from the Israeli Sacrifice sale, held by the Jewish Community in Johannesburg in 1973 to raise funds for the Yom Kippur (October) Israeli-Arab War.

LITERATURE

Artlook 91 August/September 1974, Volume 7, Number 6, illustrated in black and white on page 4.

Accompanied by a copy of the magazine *Artlook* 91 August/September 1974, Volume 7, Number 6.



450

451

Walter Battiss

SOUTH AFRICAN 1906-1982

Abstract Figures

signed
oil on board
15 by 24,5cm

R40 000 - 60 000

PROVENANCE

Johanna Catharina Pretorius, curator,
Pretoria Art Museum and Inspector of
Schools, Transvaal, thence by descent.



451

452

Johannes Meintjes

SOUTH AFRICAN 1923-1980

Full Moon

signed and dated 1960
oil on board
65 by 43cm

R50 000 - 70 000

Johannes Meintjes catalogue
number 688.



452

453

Stanley Pinker

SOUTH AFRICAN 1924-2012

Pastorale

signed; inscribed with the title and
the medium on the artist's label,
further inscribed with the artist's
name, the title and number 472 on
a Strydom Gallery label adhered to
the reverse
oil on board
29 by 23cm

R40 000 - 60 000

PROVENANCE

Stephan Welz & Co, Johannesburg,
31 May 2004, lot 494.
Private Collection.



453

© The Estate of Stanley Pinker | DALRO



454

454

Lippy (Israel-Isaac) Lipshitz

SOUTH AFRICAN 1903-1980

Dancer (Spirit of the Dance)

signed

bronze with a brown patina

height: 59,5cm

R40 000 - 60 000

EXHIBITED

South African National Gallery, *Parys en Suid-Afrikaanse Kunstenaars 1850 - 1965*, Cape Town, 16 April to 29 May, 1988.

Johannesburg Art Gallery, *Parys en Suid-Afrikaanse Kunstenaars 1850 - 1965*, Johannesburg, 22 June to 17 July, 1988.



455

455

Olivia Musgrave

IRISH 1958-

Huntress

signed and numbered 3/7

bronze with a verdigris patina

height: 52cm

R70 000 - 90 000

LITERATURE

Bruce Arnott. (1969) *Lippy Lipschitz: A biographical commentary, & documentation of the years 1903-1968*, Cape Town: AA Balkema. Where the plaster version of this work is mentioned on page 68, catalogue number 66.

Lucy Alexander, Emma Bedford and Evelyn Cohen (1988) *Parys en Suid-Afrikaanse Kunstenaars 1850 - 1965*, Johannesburg: Suid-Afrikaanse Nasionale Kunsmuseum, exhibition catalogue, illustrated on page 111, catalogue number 154.



456

456

Dylan Lewis

SOUTH AFRICAN 1964-

Untitled (S285)

2009

signed, numbered 1/26 and S285

and stamped with the Bronze Age foundry mark

bronze with a verdigris patina

height: 22cm; width: 13,5cm;

depth: 14cm

R60 000 - 80 000

457



© The Estate of Speelman Mahlangu | DALRO

457

Speelman Mahlangu

SOUTH AFRICAN 1958-2004

Twins, maquette

signed, numbered A/P 2, and stamped with the Bronze Editions foundry mark
bronze with a brown patina
height: 37cm

R30 000 - 50 000

From an edition of 9, plus 2 Artist Proofs.
This is the maquette of the large sculpture that was sold in Strauss & Co's November 2020 Virtual Live sale, lot 865.

458

Speelman Mahlangu

SOUTH AFRICAN 1958-2004

Conversation

signed, numbered 9/11 and stamped with the Bronze Editions foundry mark
bronze with a brown patina
height: 47,5cm

R40 000 - 60 000

458



© The Estate of Speelman Mahlangu | DALRO

459

Edoardo Villa

SOUTH AFRICAN 1915-2011

Small Group Conversation

signed, dated 1988 and numbered 1/2
bronze with a brown patina on a steel and Perspex base
height: 20,5cm, excluding base;
29cm, including base

R60 000 - 90 000**PROVENANCE**

Chris de Klerk and Gerard de Kamper (2012) *Villa in Bronze: A comprehensive reference to the castings of Edoardo Villa*, Pretoria: University of Pretoria, another cast from this edition illustrated in colour on page 135.

Conceived in 1985, and editioned in 1988, this example was a primary casting, before the balance of the edition was made.

460

Edoardo Villa

SOUTH AFRICAN 1915-2011

Abstract Steel Figure

signed and dated 1986
welded and painted steel
height: 50,5cm

R50 000 - 70 000

459



460



461

Peter Clarke

SOUTH AFRICAN 1929-2014

Lady with a Chiffon Scarf in her Mouth, from the Fan Series

signed, dated 6.3.2007 and inscribed with the title
watercolour and ink on paper
sheet size: 50 by 34cm

R25 000 - 30 000

LITERATURE

Philippa Hobbs (2013) 'Word and image in dialogue: Peter Clarke's collages and Fan series' in *Image & Text: a Journal for Design*, published online 1 Jan 2013, illustrated in colour as figure 5.

Philippa Hobbs and Elizabeth Rankin (2011) *Listening to Distant Thunder: The Art of Peter Clarke*, Johannesburg: Standard Bank Gallery, illustrated on page 197.



461

© The Estate of Peter Clarke | DALRO



462

© The Estate of Peter Clarke | DALRO

462

Peter Clarke

SOUTH AFRICAN 1929-2014

A Big Bite

signed, dated 29.7.1975 and inscribed with the title and medium on the reverse

black chalk and white pastel on paper
60 by 43,5cm

R60 000 - 80 000

463

Karin Jaroszynska

SOUTH AFRICAN 1934-2014

Women on a Verandah

signed; inscribed with the title on an Everard Read Gallery label adhered to the stretcher
oil on canvas
124 by 174cm

R60 000 - 80 000



463

464

After Henri Matisse

FRENCH 1869-1954

Odalisque sur la Terrasse

1922

signed by Matisse in ink, signed by the publisher, (Jacques) Villon in pencil, and numbered 28/200 in ink in the margin, published by Galerie Bernheim-Jeune, Paris; inscribed with the artist's name and title on a Halcyon Gallery label adhered to the reverse

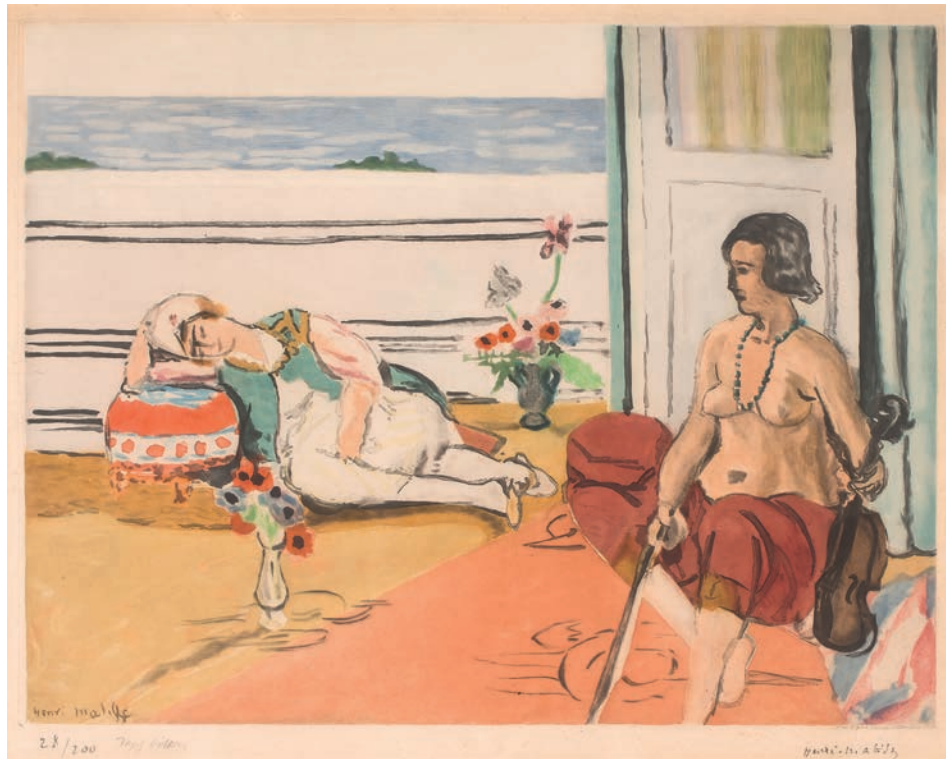
etching and aquatint in colours
plate size: 48 by 59,5cm

R120 000 - 160 000

PROVENANCE

Phillips de Pury & Company, New York,
26 October 2011, lot 9.
Private Collection.

There were an additional 10 artist's proofs
and an edition of 21 printed in black.



464

465

After Pablo Picasso

SPANISH 1881-1973

Portrait de Maya au Bateau

1965

signed and numbered 29/200 in pencil in the margin; inscribed with the artist's name along with another title (Maya au Tablier Rouge on a Halcyon Gallery label adhered to the reverse

offset lithograph and collotype printed in colours
73 by 54cm

R70 000 - 100 000

466

Arthur Delaney

BRITISH 1927-1987

Outside the Mill

signed
oil on board
44 by 14,5cm

R40 000 - 60 000



465



466

LOTS 467-470
NO LOTS