

Monday, 12 April 2021  
Session 4 at 5pm

## Silver and Furniture

Lots 321–400

Lot 359 A Cape silver commemorative covered cup,  
Johan Hendrik Vos, 19th century



321

321

**A pair of George III silver entrée dishes and covers, William Bateman, London, 1819**

each rectangular with moulded gadrooned borders, the cover similarly moulded and engraved with detachable handle, *minor dents, surface scratches, 3480g all in (2)*

R35 000 - 40 000



322

322

**A George IV silver jug, James Scott, Dublin, 1823**

ovoid, the body moulded with flowerheads, foliage and c-scrolls enclosing a cartouche engraved with a crown, the rim similarly moulded, the side applied with a bifurcated scroll handle headed by a lion-mask, the spout moulded with a further mask, raised on a domed foot moulded with flowerheads, *dents, repair, 12,4cm high, 400g*

R4 000 - 6 000



323

323

**Three William IV dishes, William Bateman, London, 1834-1835, retailed by Rundell, Bridge & Rundell**

circular, each rim cast with a gadrooned, shell and foliate border, the reverse engraved with two monograms and cyphers, one within the Garter motto, the other within a ribbon-tied oak and laurel leaf cartouche, all surmounted by a crown, the base stamped *RUNDELL BRIDGE ET CO AURIFICES REGIS LONDINI*, *dents, 2505g all in, 31cm wide*; and another example, Garrard's, London, 1846, the reverse engraved with two monograms and cyphers, the base stamped *GARRARDS, Pantom Street, LONDON*, *dents, 1010g, 31,2cm wide (4)*

R65 000 - 80 000

**PROVENANCE**

Purchased Strauss & Co October 2013, lot 316.

The monograms and cyphers on these dishes are those of King William IV (1765-1837) and Queen Adelaide (1792-1849).

These dishes were originally part of an extensive service supplied by Rundell to the Royal family circa 1835. A large portion of the service was sold at Christie's by William, 1st Earl of Lonsborough, in 1898. Pieces from the service have since reappeared at Christie's auctions in London and New York.



324

324

**A pair of Victorian silver wine coasters, Joseph Angell I & Joseph Angell II, London, 1846**

each with pierced foliate sides, the rim moulded with c-scrolls, foliage and shells, with turned wooden base, *dent, 14,1cm diameter (2)*

R30 000 - 40 000



325



325

**A Victorian silver chalice, Smith, Nicholson & Co, London, 1852**

the double-lipped bowl applied with grape-and-vine leaves centred by a crest, the intertwining branch-form stem raised on a stepped domed stippled foot moulded with leaves and tufts of grass, silver-gilt interior, *dents*, 24cm high, 450g

R8 000 - 10 000

326



326

**A pair of Victorian silver and glass comports, Thomas Bradbury & Sons Ltd, Sheffield, 1861-1864**

each moulded as fruiting vines supporting a clear and frosted glass bowl of lobed outline, engraved and cut with alternating panels of stylised leaves, with star-cut base, raised on a domed base with three roccaille feet moulded with c-scrolls and shells, the front of the footrim engraved with a crest, *repairs*, the taller 31cm high, 1660g all in (2)

R80 000 - 100 000

327

**An Edward VII silver two-handled presentation tray, Charles Stuart Harris, London, 1901**

oval, with a pieced border applied with fruiting-vine tendrils heightened with masks of Bacchus, the openwork handles with masks headed by shells, 77cm wide over handles, 6085g; with presentation case, lined with blue felt, the sides with brass-carrying handles, the hinged cover formerly set with presentation plaque, 10cm high, 82cm wide, 58cm deep (2)

R70 000 - 80 000

327



328

**An Edward VII silver tray,  
maker's marks indistinct,  
Birmingham, 1904**

rectangular, with gadrooned border and moulded shell and acanthus-leaf corners, the sides applied with conforming handles, raised on four scroll feet, *dents*, 65,3cm wide over handles, 3450g

R30 000 - 35 000



328

329

**An Edward VII silver inkstand,  
Thomas Bradbury & Sons Ltd,  
London, 1908**

of navette shape, with beaded rim and acanthus-leaf handles, with two blue-glass ink pots and a central candlestick, raised on four scroll legs, *dents*, 21,5cm long, 260g all in

R6 000 - 8 000



329

330

**A George V silver salver,  
J Taylor & Co, London, 1930**

circular, with moulded wavy rim, raised on three cabriole and hoof feet, *dents*, scratch weight 49-10, 36,5cm diameter, 1515g

R12 000 - 15 000



330

331

**A Bristol Delft  
polychrome charger**

circular, the centre painted with peonies and a butterfly before a rocky outcrop in shades of puce, green, yellow and blue, *Gautier Collection label*, hairline crack, chips, glaze loss, 35,5cm diameter

R15 000 - 20 000



331



332

**332**  
**A George III pine and  
 marble-topped console table**

the rectangular green-veined marble top with outset canted corners, above a Greek-key frieze with foliate paterae to each corner, raised on carved acanthus, gadrooned and scalework legs, on scroll-and-block feet, *minor chips*, 81,5cm high, 108cm wide, 52,5cm deep

R20 000 - 25 000

**333**  
**A George III flame mahogany  
 linen press, Gillows, Lancaster**

*in two parts*, the moulded outset pediment above a pair of panelled doors, enclosing four sliding shelves and a pair of drawers below, the lower section with four graduated long drawers, the first with three divisions, on outset bracket feet, *manufacturer's stamp GILLOWS LANCASTER*, *minor chip*, 217cm high, 140cm wide, 57cm deep

R30 000 - 40 000



333



334

**A George III flame mahogany bookcase**

*in three parts, the broken swan-neck pediment above four glazed doors each enclosing three adjustable shelves, the lower breakfront section centred by a pair of drawers, a pair of panelled doors below enclosing five sliding drawers flanked by a pair of drawers above panelled doors each enclosing twelve bottle compartments, raised on a conforming plinth base, minor losses, 285cm high, 270cm wide, 60cm deep*

R80 000 - 100 000

334



335

**A Regency mahogany and upholstered settee**

*the reeded arched back centred by a tablet with foliate gilt mounts, upholstered arms and back, loose button-back seat cushion, the outcurved fan-shaped arm supports above gadrooned and conforming tablets to the apron, the reverse similarly carved, on outset gadrooned legs, with brass paw feet and castors, two loose bolster cushions, close-nailed throughout, one leg restored, 212cm long*

R15 000 - 20 000

335





336

336

**A Regency mahogany corner cupboard**

the moulded pediment above a ribbed border headed by rondels, the panelled door enclosed by a carved border of chainwork, enclosing a pair of *later* fabric-lined shelves, canted corners, on a conforming base, 110cm high, 83cm wide, 58cm deep

R6 000 - 8 000

337

**A George III oak and inlaid dresser**

*in two parts*, the upper half with moulded corners above a pierced and carved frieze, three open shelves below, the lower breakfront section with an arrangement of four drawers flanked by a pair of single drawers above a pair of panelled cupboard doors, double panelled sides, on bracket feet, *restorations*, 203cm high, 154cm wide, 26cm deep

R15 000 - 20 000

\*This lot is not suitable for export



337





338



339

**338**  
**An early Victorian rosewood sofa table**

the rectangular top with rounded corners above a pair of frieze drawers, raised on pierced and carved supports headed by foliate motifs joined by a ring-turned stretcher, the centre with carved bosses, raised on a plinth base above gadrooned lotus feet, on brass and wooden castors, *minor veneer loss*, 72cm high, 140cm wide, 65,5cm deep

**R10 000 - 15 000**

\*This lot is not suitable for export

**339**  
**A Victorian mahogany library table, Holland & Sons**

the rectangular moulded top with re-entrant corners, above four frieze drawers, on ring-turned tapering fluted legs joined by an H-stretcher, with brass caps and castors, *stamped HOLLAND & SONS*, *minor chip*, 75,5cm high, 182,5cm wide, 120cm deep

**R15 000 - 20 000**

**340**  
**A Victorian stained pine artist's easel, Windsor & Newton Ltd, London**

the rising rest with winding handle and brass carrying-handles to the sides, with brass coat hooks, on a plinth platform base joined by a cross-stretcher, on brass and porcelain castors, *inset manufacturer's plaque*, *restorations*, 330cm high, 80cm wide, 76cm deep

**R20 000 - 30 000**



340

341

**A German five-piece silver tea service, M H Wilkens & Söhne, Bremen-Hemelingen, .800 standard, 19th century**

comprising: a hot water jug, teapot, milk jug, two-handled sugar bowl and tray, each baluster body engraved with initials enclosed by moulded sprays of flowerheads and foliage, the side applied with a harp-shaped handle moulded with leaves, the hinged cover surmounted by a rosebud finial, raised on a circular base, *dents, repair, the coffee pot 19,5cm high, the tray 46,4cm wide, 2845g all in (5)*

R25 000 - 30 000

\*This lot is not suitable for export



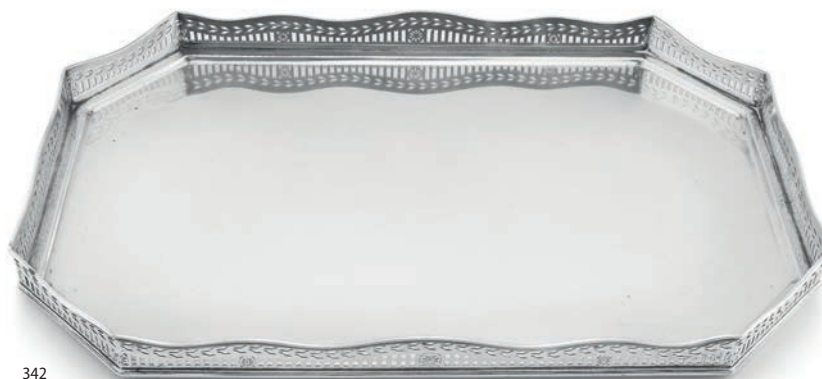
341

342

**A German silver tray, Gebrueder Friedländer, .833 sterling with import marks for Holland, retailed by J.M van Kempen & Zonen, Voorschoten, 1886**

rectangular with canted corners, the reeded wavy sides with pale work interspersed with stylised flowerheads below a pierced leaf border, *restoration, 50,9cm wide, 2775g*

R20 000 - 30 000



342

343

**A German silver pierced two-handled bowl, B Neresheimer & Söhne, Hanau, 1903 with import marks for Berthold Hermann Müller, London, 1914, .925 sterling**

ovoid, the pierced body moulded with swags of flowerheads and foliage enclosing alternating pierced panels of birds and flowerheads amongst scrolling foliage, the wavy rim moulded with c-scrolls and shell motifs, the sides applied with c-scroll and flowerhead carrying-handles, raised on a pierced foliate and flowerhead openwork apron, on four foliate and flowerhead outset legs, *32cm wide over handles, 1095g*

R15 000 - 18 000



343



344

**344  
A Portuguese silver tureen  
and cover, retailed by Topazio,  
Oporto, .833 sterling, post 1838**

globular, the body profusely engraved with flowerheads and moulded in high relief with c-scrolls and shells, with rose and foliate handles, conforming cover and finial, raised on a moulded c-scroll and acanthus-leaf foot, with fitted liner, the reverse of the cover with silver-gilt interior, *restoration*, 23cm high, 2330g all in

R20 000 - 25 000



345

**345  
A Portuguese silver dish,  
marks indistinct, 19th century**

circular, the centre moulded in high relief with buds within a star-shaped panel, enclosed by a swirling gadrooned band, the border moulded in high relief with eight shaped panels enclosing flowerheads and foliage, wavy rim, *dents*, 35,7cm diameter, 680g

R7 000 - 8 000



346

**346  
An Italian silver chalice, 1872,  
.800 standard**

the bell-shaped bowl moulded in high relief with alternating angel heads and flowerheads within shaped cartouches, the knopped stem similarly moulded, the domed foot moulded in high relief with angel heads alternating with saints above a shaped foot moulded with c-scrolls and scrolling foliage, 27,5cm high, 835g

R20 000 - 25 000



347

**347  
A Dutch silver-gilt travelling set  
of six liquor cups, 1893-1905**

*in sizes*, each bell-shaped with gilt rim and interior, five engraved with a crest to one side, *dents*, the largest 7,8cm diameter, 340g all in; contained in a fitted leather case, with hinged cover, *distress to case*, 8cm high (7)

R7 000 - 9 000





348



349



350



351

348

**An American Gorham five-piece silver tea and coffee service, 1941-**

comprising: a coffee pot, teapot, milk jug, two-handled sugar bowl and covered sugar bowl, each baluster body applied with a leaf-capped scroll handle, the hinged cover surmounted by a spire finial, raised on a spreading circular foot, dents, splits, the coffee pot 27cm high, 2125g all in (5)

**R20 000 - 30 000**

\*This lot is not suitable for export

349

**A Tiffany & Co silver water pitcher, 1907-1947, .925 sterling**

ovoid with flared lip, the side applied with a leaf-capped scroll handle, raised on a circular domed spreading foot, the base engraved *TIFFANY & CO MAKERS, 11967A 8344, STERLING SILVER, 925-1000, 4-PINTS, repair, 23,1cm high, 1000g*

**R20 000 - 25 000**

350

**A Tiffany & Co silver jug, 1892-1902, .925 sterling**

the bulbous part-ribbed body raised on a reeded circular footrim, with flared reeded lip, the front engraved with initials, the side applied with an acanthus-headed leaf-capped handle, the base engraved *TIFFANY & CO, 11276, MAKERS, 3326, STERLING SILVER, T, 2 PINTS, 14,7cm high, 455g*

**R12 000 - 15 000**

351

**A Tiffany & Co silver 'Windham' pattern four-light centrepiece, 1947-1956, .925 sterling**

the central bowl with everted rim raised on four scroll feet each headed by a nozzle, engraved *Tiffany & Co, MAKERS, STERLING SILVER 23312 M, 41cm diameter, 1005g*

**R15 000 - 20 000**



352



354

352

**Three Italian black- and cream-glazed decanters and stoppers, Bruno Gambone, late 1970s**

*in sizes, each triangular-shaped body incised with geometric lines against an earthy black-toned ground, rising to an elongated neck with white and speckled brown-glazed rim, conforming stopper, signed GAMBONE ITALY, minor chips, the tallest 28cm high (3)*

R25 000 - 30 000

353

**A bottiglie morandiane glass decanter and stopper designed by Fulvio Bianconi and Gio Ponti for Venini & Co, mid to late 20th century**

*the elongated tapering body rising to an elongated neck with slightly flared rim, spire-shaped stopper, the whole with alternating black and white stripes, signed Venini Murano Italy, Venini Murano paper label, 46,8cm high*

R6 000 - 8 000

354

**A pair of two-light murano-glass white and brown Saturn dishes**

*circular, each with brown rim and white convex body, 30cm diameter*

R6 000 - 8 000

\*We do not guarantee electrical fittings

355

**An Italian aquamarine glass vase, Tommaso Buzzi for Venini, 20th century**

*the baluster body with tapering neck and flared rim, raised on a low foot, acid-etched Venini, 29cm high*

R6 000 - 8 000



353



355

356

**A four-light murano-glass standing lamp, possibly Archimedi Seguso for Venini, 20th century**

*the central column with a pair of gold-flecked and cream elongated glass supports, raised on a circular swirling base, on three steel toupie feet, with brass mounts, fitted for electricity, 170cm high*

R15 000 - 20 000

\*We do not guarantee electrical fittings



356



357

**357**  
**A French 'Anthéor' painted and welded steel dining suite, Mathieu Matégot, circa 1950**

comprising: a table and four armchairs; the circular loose glass top above a wavy openwork frieze, raised on a tubular waisted column, 72cm high, 102,5cm diameter (S)

**R70 000 - 90 000**

**PROVENANCE**

Dr Kirk Main and thence by descent.  
 Purchased in 1959 from Iain McHarg's Auctioneers, Ndola, Zambia.

The current owner seated at this table on her wedding day, 25 April 1970.



**358**

**A Danish teak extending dining table designed by Henry Rosegren Hansen for Brande Møbelindustri, 1960s**

with a pair of leaves, the rectangular crossbanded top with rounded corners on square-section tapering legs, manufacturer's paper label, 71cm high, 254cm wide fully extended, 99cm deep

**R20 000 - 30 000**



358



359

# **A Cape silver commemorative covered cup, Johan Hendrik Vos, 19th century**

the bell-shaped bowl with a moulded double girdle enclosing a cartouche engraved to the front "*Beleid, Trouw, en Kloekheid!*" and to the reverse "*Stellenbosche Blaauwe Standaard.*", with moulded rim engraved "*De Gouverneur en Generaal en Chef J:W: Janssens, erkentlijk aan de Gewapende Burger Macht!*", raised on a double beaded and fluted tapering stem, on a moulded stepped collar, the plinth base engraved "*Ritmeester J: Linden. den 7 Februarij 1805. Bat. Republiek: den 8 Februarij 1805.*", the domed cover with moulded petals and ball finial, gilt interior, *minor dents*, 29cm high, 950g

**R200 000 - 300 000**

## **PROVENANCE**

Mr Jan Linde Beyers Marais, Eversdal Homestead, Durbanville and thence by descent. "Ritmeester J. Linden was one of the four platoon commanders involved in the fight against the Pandour Deserters in February 1805. He only had daughters and one of them was married to a certain Beyers. The said Beyers also only had a daughter and one of them married a Marais. By means of the Marais, the trophy came into our family. It was passed on to the oldest in each next generation. Mr JLB Marais died in 2002 and the family has decided to sell the cup."

## **LITERATURE**

Welz, S. (1976) *Cape Silver and Silversmiths*, A.A. Balkema, Rotterdam, illustrated on p.8

Accompanied by a postcard of the cup.

This cup was loaned to both the Stellenbosch Museum and the Swellendam Museum by Mr JLB Marais.

"In January 1805 three officers and 28 soldiers of the Hottentot Light Infantry Corps deserted with their arms. They were pursued, the officers killed and the soldiers captured by companies of the Burgher Cavalry of Stellenbosch and Swellendam. Governor Janssens recommended that the four cavalry captains each be presented with a silver cup. This covered cup by Johan Hendrik Vos (1749+) was presented to Captain Johannes Linden of Stellenbosch. The inscriptions read: 'De Gouverneur en Generaal en Chef J:W: Janssens, erkentlijk aan de Gewapende Burger Macht'; 'Stellenbosche Blaauwe Standaard'; 'Beleid, Trouw en Kloekheid'; 'Ritmeester J: Linden'; 'Bat: Republiek'; 'den 7 Februarij 1805'; 'den 8 Februarij 1805'. Height 29cm (Stellenbosch Museum)"

Welz, S. (1976) *Cape Silver and Silversmiths*, A.A. Balkema, Rotterdam, p.9



postcard



360

**360**  
**A Cape silver teapot, Johannes Hendricus Beyleveld, early 19th century**

ovoid, the body engraved with flower-filled cornucopias between foliate bands, with leaf-capped wooden handle and swan-neck spout, the hinged domed cover with urn-shaped finial, minor dents, 20cm high, 850g all in

R100 000 - 120 000



362

**361**  
**A Cape silver presentation box, Peter Clarke Daniel, 19th century**

rectangular with rounded corners, the hinged cover with a ribbon-tied wreath enclosing an inscription "Aan den WelEerwaarden Heer J.M. Klok van Staveren, wordt dit, als een gering blyk van hoogachting en erkentenis aangeboden, van de ondergenoemden, door Zynen WelEerwaarden, tot Ledematen der Evangelische Luthersche Gemeente aan de Kaap de Goede Hoop, bevestigd, op den 20sten Maart 1842. WD Morgenrood, JFF Burnard, MAR Bergh, CF Leisching", further enclosed by scrolling foliage and a double-line wrigglework border, the sides engraved with undulating ribbons and foliate between wrigglework borders, shaped thumbpiece, gilt interior, dents, 14,9cm wide, 330g

R20 000 - 30 000



361



363

**363**  
**A Dutch silver covered box, Pieter van Riedt (1784-1801), Amsterdam, 18th century**

rectangular, the rims with beaded border, the hinged cover chased with stylised foliate and geometric motifs, the centre engraved with a flowerhead, the front engraved with the initials 'DVR', the cover engraved 'Presented to me in token of Remembrance by Mrs Daniel van Renen, whose late husband died at my house, Swellendam, on the 21st August 1842, Tho' Barry', 15,4cm wide, 555g

R12 000 - 15 000

This box was presented by Cornelia Arnoldina Deney, on the death of her husband in 1842. The box was presented to Thomas Barry, the husband of Daniel van Renen's niece, Aletta Catharina.

The translation of the inscription reads "This (box) is presented to the Very Reverend JM Klok van Staveren by the undermentioned as a small token of regard and gratitude for confirming them into the Evangelic Lutheran Congregation at the Cape of Good Hope on 20 March 1842. WD Morgenrood JFF Burnard MAR Bergh CF Leisching".

"About the middle of the 18th century many Lutherans were already living at the Cape, and in 1742 they petitioned the Dutch East India Company, which exercised ecclesiastical authority, for permission to hold divine service in public. The Heeren XVII, being strict Calvinists, refused this permission until 1778. In the mean time Martin Melck, a rich farmer, had built a 'storehouse' which he presented to the congregation, and here the first official service was held by

the Rev. Andreas Lutgerus Kolver in 1780. [...] Johan Melchior Klok van Staveren was appointed minister in 1827 and retired on account of ill-health in 1864. In 1847 he dismissed Georg Wilhelm Stegmann, who had been appointed second minister in 1836, on account of differences between them."

Potgieter, DJ (1970) *SESA (Standard Encyclopedia of SA)*, Vol 7, page 70.

**362**  
**A Cape silver pap boat, Lawrence Holme Twentyman, 19th century**

repair, dents, 12,7cm long, 90g

R4 000 - 6 000

364

**Four Cape silver 'Fiddle' pattern dinner spoons, Lawrence Holme Twentyman, 19th century**

*pinhead dents, 315g all in (4)*

R8 000 - 10 000



365

**Three Cape silver 'Fiddle' pattern dinner forks, Lawrence Holme Twentyman, 19th century**

*dents, 215g all in; and a pair, similar, 110g all in (5)*

R9 000 - 12 000



366

**A pair of Cape silver 'Fiddle' pattern dessert forks, William Moore, 19th century**

*dents, 35g all in (2)*

R4 000 - 6 000



367

**A Cape silver 'Fiddle' pattern teaspoon, William Moore, 19th century**

*the terminal engraved with initials, pinhead dent, 25g; and another, Lawrence Holme, Twentyman, 19th century, the terminal similarly engraved, 15g (2)*

R400 - 600

368

**Four Cape silver 'Old English' pattern dinner spoons, Carel David Lotter, 19th century**

*dents, 215g all in (4)*

R8 000 - 10 000

369

**A Cape silver 'Fiddle & Shell' pattern basting spoon, John Townsend, 19th century**

*145g*

R4 000 - 6 000

370

**A Cape Neo Classical stinkwood rusbank, early 19th century**

*the wavy top rail above four tapering pierced splats, downcurved arms, riempie seat, on square-section fluted legs with stop feet, 192cm long*

R40 000 - 60 000

370







371

**A West Coast yellowwood and inlaid cupboard, 18th century**

the outset moulded cornice above an inlaid frieze, a pair of double reeded panelled doors below enclosing three shelves and a pair of deep drawers, panelled sides, raised on moulded bracket feet, *restorations*, 200cm high, 151cm wide, 54cm deep

**R250 000 - 300 000**

**LITERATURE**

cf. Baraitser, M. and Obholzer, A. (1971) *Cape Country Furniture*, AA Balkema, Cape Town, illustrated on p. 286, image 994.

372

**A Cape teak side table,  
18th century**

the rectangular moulded top above  
a frieze drawer, on ring-turned  
octagonal-faceted tapering legs  
joined by an X-shaped stretcher,  
on ring-turned feet, *minor chips*,  
71cm high, 94cm wide, 59cm deep

R60 000 - 80 000



372

373

**A Cape stinkwood and  
yellowwood inlaid  
jonkmanskas, 19th century**

the rectangular moulded outset top  
above a pair of drawers, a pair of  
panelled doors below enclosing two  
shelves, panelled sides, on square-  
section tapering legs, 150cm high  
124cm wide, 53cm deep

R80 000 - 100 000

**PROVENANCE**

Highgate Ostrich Farm, Oudtshoorn  
and thence by descent.



373

374

**A pair of Cape Neo Classical  
stinkwood side chairs, early  
19th century**

each curved double arched top rail  
with wave cresting above a pierced  
splat, curved bottom rail, caned seat,  
on square-section tapering fluted  
legs joined by an H-stretcher, *minor  
repair* (2)

R8 000 - 12 000



374

375

**A pair of Cape stinkwood and  
yellowwood wall cupboards,  
Oudtshoorn district,  
19th century**

each broken swan-neck pediment  
above a pair of cottage-pane glazed  
doors enclosing two shelves, above  
a pair of panelled doors enclosing a  
shelf, flanked by gadrooned pilasters,  
*restorations*, 218cm high, 122cm wide,  
37cm deep (2)

R150 000 - 200 000

**LITERATURE**

*cf.* Baraitser, M. and Obholzer, A.M.  
(1971) *Cape Country Furniture*, AA  
Balkema, Cape Town, where a similar  
example is illustrated on p. 308,  
image 1067.

*cf.* Baraitser, M., Malherbe, & Obholzer,  
A.M. (1985) *The Cape House and  
its Interior*, Stellenbosch Museum,  
Stellenbosch, where a similar  
example is illustrated on pgs. 354  
and 355.



375



376

**A Cape stinkwood and yellowwood linen press, 19th century**

*in two parts, the later moulded outset cornice above a pair of panelled doors enclosing two shelves and a pair of drawers, the lower section with three long drawers, on bracket feet, inlaid with stringing throughout, restoration to the bracket feet, 223cm high, 138cm wide, 59cm deep*

R20 000 - 30 000



376



377



378

377

**A Cape of Good Hope Imperial Gill measure, 1877**

*engraved Govt. of Cape of Good Hope, 1877, 9cm high; and another, 7,5cm high (2)*

R18 000 - 22 000

378

**A Cape of Good Hope Imperial Pint, de Grave & Co, London, 1895**

*engraved Govt. of Cape of Good Hope, De Grave & Co, London, 1895, 11,3cm high*

R15 000 - 20 000

379

**A Cape stinkwood and witels  
inlaid Langkloof kist,  
19th century**

the hinged rectangular top above an  
inlaid recessed front panel, panelled  
sides, on ring-turned tapering legs,  
51,5cm high, 84cm wide, 52cm deep

R30 000 - 40 000

379



380



380

**A Cape stinkwood side chair,  
early 19th century**

the yoke-shaped top rail above a pierced splat  
with reeded bottom rail, caned seat, on square-  
section tapering fluted legs joined by an  
H-stretcher, *minor loss*

R3 000 - 5 000

381



381

**A Cape stinkwood side chair,  
early 19th century**

the slightly arched top rail above a pierced  
splat and dished bottom rail, caned seat, on  
square-section tapering fluted legs, *one leg  
with a minor repair*

R3 000 - 5 000

382



382

**A Cape stinkwood transitional Tulbagh  
side chair, 19th century**

the reeded top and bottom rails joined by a pair of  
splats, riempie seat, on square-section legs joined  
by a box-stretcher, *minor loss*

R5 000 - 7 000

**LITERATURE**

*cf.* Baraitser, M. & Obholzer, A. (2004) *Cape Antique  
Furniture*, AA Balkema, Cape Town, illustrated on  
p. 44, image 160.



383

383

**A Transvaal kiaat workbench, early 20th century**

the rectangular top with one square and a pair of circular tool apertures, the front with adjustable vice, the reverse with open trough and openwork rail, raised on square-section legs joined by conforming stretchers, 87cm high, 224cm long, 75cm closed

R30 000 - 40 000



384

384

**A Cape stinkwood and yellowwood document box, 19th century**

the moulded rectangular hinged top with brass carrying-handle, dovetailed sides, on a plinth base, minor repair, 22cm high, 41cm wide, 26cm deep

R8 000 - 10 000



385

385

**A Cape two-handled copper jam boiler and cover, Thomas Hindle & Benjamin Theophilus Lawton, 19th century**

circular, with rolled rim, the sides applied with steel handles, the cover with strap handle, stamped CAPE TOWN TH & BT LAWTON, 33 BURG STREET, F VAN AS, dents, 43,7cm wide over handles

R4 000 - 6 000

**LITERATURE**

cf. Viljoen, D. & Rabe, P. (2001) *Cape Furniture and Metalware*, Cape Town: Deon Viljoen and Piér Rabe, illustrated in colour on pages 110 and 111, number 84. cf. Le Roux, M. (1982) *The Cape Copper-Smith*, Stellenbosch: Stellenbosch Museum, where a similar example is illustrated on page 104, number 117.

386

**A Cape two-handled copper jam boiler and cover, Thomas Hindle & Benjamin Theophilus Lawton, 19th century**

circular, with rolled rim, the sides applied with steel handles, the cover with strap handle, stamped CAPE TOWN TH & BT LAWTON, 33 BURG STREET, CAPE TOWN, 49,5cm wide over handles

R4 000 - 6 000

**LITERATURE**

cf. Viljoen, D. & Rabe, P. (2001) *Cape Furniture and Metalware*, Cape Town: Deon Viljoen and Piér Rabe, illustrated in colour on pages 110 and 111, number 84. cf. Le Roux, M. (1982) *The Cape Copper-Smith*, Stellenbosch: Stellenbosch Museum, where a similar example is illustrated on page 104, number 117.



386



387

**A Batavian coromandel, satinwood and ebony bible desk-on-stand, 19th century**

the rectangular top above a hinged fall-front enclosing an arrangement of drawers and a compartment, above a frieze drawer, the sides applied with brass carrying-handles, raised on *later* ring-turned faceted tapering legs joined by a shaped X-stretcher centred by a turned finial, on bun feet, *minor loss*, 94,5cm high, 95cm wide, 70cm deep

R60 000 - 80 000



387

388

**A large Linnware turquoise-glazed vase**

the tapering waisted baluster body in shades of green, blue and turquoise, rising to an elongated neck, raised on a low foot, *Linnware mark*, *restoration*, 57cm high

R10 000 - 15 000



388

389

**A large Linnware turquoise-glazed jug**

in shades of green, blue and turquoise, the waisted ovoid body rising to a slightly everted neck, the side applied with a loop handle, raised on a low foot, *impressed hut mark*, 23cm high

R5 000 - 7 000



389

390

**A Linnware celadon-glazed two-handled vase**

urn-shaped, the sides applied with loop handles, raised on a circular pedestal foot, with mottled brown shades, *Linnware scratch mark*, *restorations*, 24,5cm wide over handles

R4 000 - 6 000



390

391

**A Linnware grey-glazed jug**

in shades of grey, the tapering waisted baluster body with everted neck, the side applied with a loop handle, *impressed Linnware mark*, 18,2cm high

R6 000 - 8 000



391

LOTS 392-400  
NO LOTS