





Monday, 9 November 2020
Session 2 at 10am

Jewellery and Oriental Works of Art

Lots 91–190

Lot 141 A Chinese doucai dish, Qing Dynasty, Qianlong period, 1736-1795 (detail)



91

91
A George III hair watch chain with gold mounts
 set to engraved gold mounts with *later* dog clips and T-bar,
 length approximately 370mm
 R3 000 - 5 000



92

92
A rose gold, enamelled and paste open-faced verge watch, late 18th/early 19th century
 white enamel dial, Roman numerals, outer Arabic minute ring, signed *Vauchez, A. PARIS*, pierced hands, full plate gilt verge fusee movement, pierced and paste grille set to the centre with an oval enamel portrait of a courtier, paste-set bezel, hinged glass front and back, *some paste loss*, diameter 40mm
 R12 000 - 15 000



93

93
A rose gold open-faced verge watch, André Hessen, circa 1780
 white enamel dial with Arabic numerals, outer minute divisions with Arabic five minute markers, signed *André Hessen, A PARIS*, fleur de lys hands, full gilt plate verge fusee movement signed *Aré Hefsen (sic) A Paris, 1152*, large foliate pierced and engraved balance cock, silver regulator disk, winding aperture at 2, plain back case, the *later* front case with central magnification, diameter 55mm, associated gilt-metal outer case
 R15 000 - 20 000



94



94

18ct gold open-faced lever watch, Sheffield, 1909

with three colour gold dial, Roman numerals within arched foliate sprays, fleur de lys hands, with three quarter plate nickel lever movement engraved Thos. Savory, 54 Cornhill, London, No 1885, bi-metallic compensation balance, spiral spring and regulator, screwed chatons, gold cuvette and inner covers engraved with case maker's initials JB, engine-turned back cover, engraved band, *diameter 45mm*; and an 18ct gold cased lever watch, with gilt dial, Roman numerals, blued-steel hands, beaded outer track, gilt movement, bi-metallic compensation balance, spiral spring and regulator, gilt cuvette, the front case engraved with initials within a foliate cartouche, the engine-turned front and back cases engraved with borders of flowers, the case No 40153, *diameter 35mm* (2)

R20 000 - 25 000

95

18ct heavy gold cased minute repeating keyless lever watch, Thomas Russell & Son, Chester, 1912

with white enamel dial signed *'Minute Repeater Thos. Russell & Son Liverpool'*, Roman numerals, subsidiary seconds and outer minute track, gold hands, with Swiss nickel lever movement, bi-metallic compensation balance, blued-steel helical spring and regulator, jewels, screwed chatons, the three-quarter plate engraved Thos Russell & Son, Liverpool, No 201781, repeating slide in the band, the cuvette and inner covers engraved with case maker's initials TR, plain front and back covers, case No 81, *diameter 55mm*

R20 000 - 30 000

96

18ct gold half hunter lever watch, Goldsmiths & Silversmiths Co Ltd, London, 1918

with white enamel dial signed *'Goldsmiths & Silversmiths Co Ltd, 112 Regent Street, London W1'*, Roman numerals, subsidiary seconds and outer minute track, blued-steel hands, with nickel lever movement, bi-metallic compensation balance, blued-steel helical spring and regulator, jewels, the three-quarter gilt plate engraved *'Goldsmiths & Silversmiths Company, Makers to The Admiralty, 112 Regent Street, No 52350'*, the cuvette engraved with the inscription *'GORDON TRAVERS FROM HIS AFFECTIONATE FATHER, 15th OCTr. 1925'*; cuvette and inner covers engraved with case maker's initials, plain back cover, the front cover with enamelled Roman numerals, case No 52350, *diameter 50mm*

R15 000 - 20 000

97

18ct heavy rose gold cased minute repeating keyless cylinder watch, circa 1909, retailed Charles Frodsham & Co

with white enamel dial, Roman numerals, subsidiary seconds and outer minute track, blued-steel hands, with nickel lever movement, bi-metallic compensation balance, blued-steel helical spring and regulator, 35 rubies, screwed chatons, engraved *'Repetition'* gold cuvette, No 3738, repeating slide in the band, front and back covers engraved with a crest, inner cover engraved with an inscription, *'Percy Worthington from Daddy, Feb 18-1909'*, case No 31429, *diameter 50mm*; velvet-lined case, Charles Frodsham & Co, 17 South Molton St, London

R20 000 - 30 000



95



96



97



98

Coral demi-parure, circa 1875

including a necklace composed of multi-strands of fine coral beads terminating in knots and tassels, *length approximately 655mm*; a pair of pendant earrings, set to a pierced *cannetille* gold cap with suspension loop, *length approximately 55mm*; and a pair of bracelets, set to a foliate gold barrel-shaped clasp, *length approximately 180mm*; fitted *Chinese silk-lined case with inscription: To my dear little girl Maria Wilhelmina Bamberger this keepsake is given on her fourth birthday from her loving mother Charlotte Bamberger, Wynberg, 30th June 1875. (5)*

R20 000 - 25 000

*This lot is not suitable for export

Charlotte Catherine Maria Robinson (b. 1848) married Alexis Nicolaas Bamberger (b. 1842) in 1869. Maria Wilhelmina Bamberger (b. 1871)

99



99
**Coral and gold scarf clip,
late 19th century**

hinged, the oval frame set to the centre with a cabochon-cut coral bead to filigree open-work, width approximately 25mm

R4 000 - 6 000

100



101



100
**Victorian opal and diamond
bangle, Henry Griffith & Sons**

hinged, set to the centre with five oval-cut opals, weighing approximately 6.50 carats, enclosed by old- and rose-cut diamonds, engraved with the maker's initials HG&S, inner circumference 175mm

R15 000 - 20 000

102



101
Single stone diamond ring
claw-set to the centre with an oval-cut diamond weighing 2.075 carats, size M

Accompanied by an International Diamond Certification Laboratory certificate stating that the diamond weighing 2.075 carats is K in colour and VVS² in clarity

R55 000 - 60 000

102
Diamond pendant

claw-set with an oval brilliant-cut natural, fancy intense yellow diamond weighing 1.12 carats, set to a bale, length approximately 12mm

Accompanied by report number 2203890503 from Gemological Institute of America stating that the diamond weighing 1.12 carats is natural, fancy intense yellow, even in colour and SI¹ in clarity

R35 000 - 40 000



103

103
Pair of tanzanite and diamond earrings

each pendant drop claw-set with an emerald-cut tanzanite weighing approximately 3.62 carats enclosed by an open octagonal-shaped diamond-set frame accented by a round brilliant-cut diamond to a diamond-set ribbon and hinged bale weighing approximately 1.03 carats, *post and butterfly fittings, length approximately 35mm (2)*

R30 000 - 35 000



104

104
18ct white gold torc necklace

composed of a series of textured herringbone links, *some distortion, inner circumference approximately 425mm*

R60 000 - 65 000



105

105
Pearl and diamond dress ring

set to the centre with a baroque pearl surrounded by pavé-set round brilliant-cut diamonds weighing approximately 3.50 carats, *size O½*

R30 000 - 35 000



106

106
Diamond ring

claw-set to the centre with a round brilliant-cut diamond weighing 1.04 carats enclosed by a fine openwork border of round brilliant-cut diamonds, the shoulders similarly set, *size N½*

Accompanied by report number 2141997704 from Gemological Institute of America stating that the diamond weighing 1.04 carats is H in colour and SI² in clarity

R70 000 - 75 000

107



108



109



110



107
Diamond and white gold bangle

hinged, channel-set with princess-cut diamonds weighing approximately 3.17 carats, *inner circumference approximately 170mm*

R45 000 - 48 000

108
Diamond dress ring

of bombé design, pavé-set to the front with round brilliant-cut diamonds weighing approximately 2.50 carats, *size N*

R30 000 - 32 000

109
Tanzanite and diamond pendant

claw-set with a cushion-cut tanzanite weighing approximately 29.12 carats to a bezel embellished with claw-set round brilliant-cut diamonds to a fixed bifurcated diamond-set bale, *length approximately 33mm*

R200 000 - 210 000

110
Diamond ring

claw-set to the centre with a round brilliant-cut diamond weighing 6.35 carats, *size R*

Accompanied by report 200910214/130397 from E.G.L. South Africa stating that the diamond weighing 6.35ct is J in colour and SI² in clarity

R450 000 - 480 000



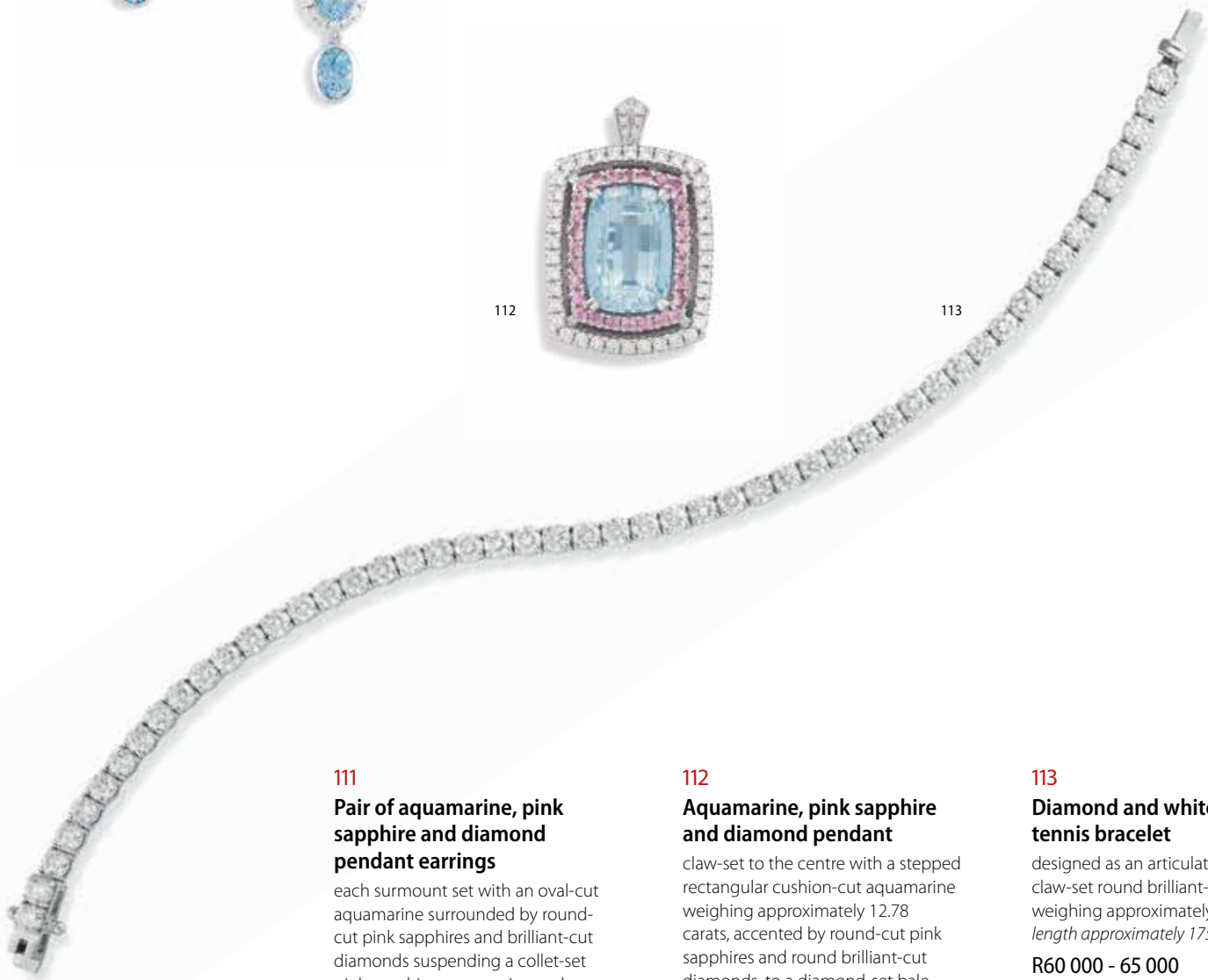
111



112



113



111
Pair of aquamarine, pink sapphire and diamond pendant earrings

each surmount set with an oval-cut aquamarine surrounded by round-cut pink sapphires and brilliant-cut diamonds suspending a collet-set pink sapphire, aquamarine and diamond-set drops, *post and buckle fittings, length approximately 50mm (2)*

R80 000 - 85 000

112
Aquamarine, pink sapphire and diamond pendant

claw-set to the centre with a stepped rectangular cushion-cut aquamarine weighing approximately 12.78 carats, accented by round-cut pink sapphires and round brilliant-cut diamonds, to a diamond-set bale, *length approximately 35mm*

R65 000 - 70 000

113
Diamond and white gold tennis bracelet

designed as an articulated line of claw-set round brilliant-cut diamonds weighing approximately 6.40 carats, *length approximately 175mm*

R60 000 - 65 000



114

Diamond necklace

designed as a series of graduated pear-shaped diamonds weighing approximately 19.95 carats to a pear-shaped diamond drop weighing 2.17 carats, length approximately 420mm

Accompanied by report 6222774669 from Gemological Institute of America, stating that the pear-shaped diamond weighing 2.17 carats is D in colour and IF in clarity

R950 000 - 1 000 000



115

115
Morganite and diamond dress ring
 claw-set with a pear-shaped morganite weighing approximately 11.60 carats surrounded by round brilliant-cut diamonds, between diamond-set shoulders, *size M*
 R32 000 - 35 000



116

116
Pair of morganite and diamond earrings
 each claw-set with a rectangular-cut morganite weighing approximately 9.85 carats in total, enclosed by round brilliant-cut diamonds, *buckle and post fittings, length approximately 15mm (2)*
 R24 000 - 26 000



117

117
Diamond dress ring
 of basketweave design, set with baguette-cut diamonds weighing approximately 6.40 carats, *size M*
 R50 000 - 55 000



118

118
Three-stone diamond ring
 claw-set to the centre with an emerald-cut diamond weighing approximately 0.930 carat accented by two channel-set trapezoid brilliant-cut diamonds, *size N*
 R55 000 - 60 000

119

Pair of diamond and gold earrings

designed as a pair of interlocking graduated hoops pavé-set with round brilliant-cut diamonds weighing 5.85 carats, *post and buckle fittings, length approximately 35mm (2)*

R62 000 - 65 000



120

Smokey quartz and diamond dress ring, Italian

claw-set to the centre with a cushion-cut smokey quartz weighing approximately 20.00 carats, embellished with pavé-set round brilliant-cut diamond scroll-work, to a bifurcated pink gold shank, *size O*

R25 000 - 28 000



121

Five-stone diamond ring

claw-set to the centre with an emerald-cut diamond weighing 1.03 carats, between two tiered baguette-cut and round brilliant-cut diamond shoulders, *size M*

Accompanied by report number 6173405868 from Gemological Institute of America, stating that the diamond weighing 1.03 carats is M in colour and VS¹ in clarity

R30 000 - 32 000



122

Diamond pendant

claw-set with a natural, fancy yellow cut-cornered rectangular modified brilliant-cut diamond weighing 1.02 carats, to a bale, *length approximately 10mm*

Accompanied by report number 2201890867 from Gemological Institute of America, stating that the diamond weighing 1.02 carats is a natural, fancy yellow even in colour and VS¹ in clarity

R30 000 - 35 000





123

123
Pair of tsavorite and diamond earrings

each claw-set with a round-cut tsavorite weighing approximately 2.20 carats surmounted by diamond-set and plain stylised leaves, buckle fitting, length approximately 15mm (2)

R20 000 - 25 000



124

124
Tourmaline, diamond and cultured pearl necklace

the central pendant of geometric design set to the centre with a round-cut green tourmaline weighing approximately 10.90 carats surmounted by baguette-cut diamonds, set to an open-work frame pavé-set with round brilliant-cut diamonds, weighing a total of approximately 1.15 carats, to a detachable cultured pearl necklace, length approximately 375mm; with an additional green silk cord, with gold terminals, length approximately 330mm (2)

R12 000 - 15 000



125

125
Sapphire and emerald dress ring

claw-set to the centre with an oval-cut blue-sapphire, weighing approximately 1.50 carats, accented by channel-set calibré-cut emeralds, size J

R35 000 - 40 000



126

126
Diamond pendant

collet-set to the centre with a round brilliant-cut diamond weighing approximately 2.00 carats, to a bale, length approximately 15mm

R60 000 - 65 000

127



128



127

Diamond and gold ring

collet-set with a round brilliant-cut diamond weighing approximately 1.05 carats, the shoulders pavé-set with two rows of round brilliant-cut diamonds, size T

R60 000 - 65 000

128

Diamond and gold gypsy ring, Uwe Koetter

set with three round brilliant-cut diamonds weighing approximately 1.12 carats, stamped with the maker's initials, size O½

R18 000 - 20 000

129



129

Patek Philippe Calatrava yellow gold gentleman's wristwatch, 2004, Ref 3919J-001, MVT 1878335, Case 4157524

.cal 215, manual winding damascened nickel lever movement stamped with the Geneva seal, 18 jewels, free-sprung Gyromax balance, adjusted to heat, cold isochronism and 5 positions, white dial with Roman numerals and subsidiary seconds at 6 o'clock, blued-steel hands, 18 carat yellow gold case, hobnail bezel, snap-on back, down-turned lugs, Patek Philippe leather strap with 18ct yellow gold Patek Philippe buckle, case, dial and movement signed, 30mm diameter, buckle signed

Accompanied by a Certificate d'Origine confirming the sale on 25 November 2004. Together with a leather presentation case, outer card boxes, instruction manual. Limited edition presentation silk tie, designed by Ermengildo Zegna in collaboration with Patek Philippe, cased

R150 000 - 200 000

130



130

Rolex stainless steel and yellow gold Oyster Perpetual Lady-Datejust wristwatch, Ref 79163, 2000

automatic jewelled lever movement, silvered dial, Roman numerals, magnified aperture for date, yellow gold plain bezel, screw-down crown, water resistant at 100 metres, stainless steel case, stainless steel Rolex bracelet and 18ct yellow gold centre links, signed, diameter of bezel 25mm; cased, the bracelet stamped 78243

Accompanied by Rolex presentation case and outer cardboard box, suede cushion, Rolex card case, red seal and original paper guarantee and instruction book

R30 000 - 40 000



131

131
A rare Chinese blue and white bottle vase, Qing Dynasty, Kangxi period, 1662-1722

the ovoid body painted with an unusual design of circular and octagonal-shaped pendants, below a band of arabesques, the shoulder with six panels of stylised bats alternating with flaming pearls, the neck painted with scrolling foliage, the whole enclosed by double blue-line borders, *minor hairline crack, 22,3cm high*

R25 000 - 30 000

PROVENANCE

The Carel Adolph Lion Cachet Collection and thence by descent to the current owner.

Carel Adolph Lion Cachet (1864-1945) had a profound influence on design and the decorative arts in Amsterdam. His innovative use and introduction of batik commanded a new visual language. By the 1890s he was a firm decorative artist embellishing a wide range of items from books and posters to ceramics. His wide interest is seen in his Oriental collection. His works are on exhibition at the Rijks Museum Amsterdam.



132

132
A Chinese blanc-de-chine box and cover, Qing Dynasty, Kangxi period, 1662-1722

circular, the cover sprig-moulded with prunus sprays enclosed by a double-line border, with gadrooned sides, raised on a low foot, *rim chip, 13,2cm diameter*

R20 000 - 25 000

PROVENANCE

The Carel Adolph Lion Cachet Collection and thence by descent to the current owner.



133

133
A Chinese creamy white-glazed figure of Guanyin, Qing Dynasty, 18th century

the craquelure robed deity with cowl and seated in 'Royal Ease' with one hand resting on her knee, on a shaped base, *some loss, firing flaws, 13cm high*

R6 000 - 8 000



134

134
A Chinese blue and white dish, Ming Dynasty, 17th century

circular, the centre painted with a bird perched on a rocky outcrop with peonies, scholar's rocks and *linghzi*, enclosed by six flowerheads alternating with a diaper ground enclosed by a double blue-line border, a double lobed border and with wavy rim, the reverse painted with stylised scrolls, raised on a low foot enclosed by a double blue-line border, 20cm diameter

R12 000 - 15 000

135
A Chinese blue and white tea caddy, Qing Dynasty, Kangxi period, 1662-1722

ovoid, painted with two seated courtesans playing a game of *gō* before a balustraded garden with a rocky outcrop and plantation leaves, *underglaze-blue commendation mark*, 11,5cm high, with later Dutch 19th century silver mounts and cover, A & Co. .934 sterling, with plain silver footrim, the shoulder and neck with engraved foliate mount, the cover similarly engraved, the spire finial engraved with a flowerhead, *minor dents*

R12 000 - 15 000

PROVENANCE
 Purchased from Kunstveilingen Mak van Waay, N.V., Amsterdam, the Mrs H.C.A.M. Guttig-Hannik collection, 24-26 October 1969, lot 967.



135

136
A Chinese blue and white tea caddy, Qing Dynasty, Qianlong period, 1736-1795

the lobed baluster body painted with magnolias, peonies and foliage enclosing a stylised pagoda, the base applied with open scroll work, the shoulder with later 19th century Dutch silver collar and rim, with later mushroom-shaped silver cover, post 1953, .835 sterling, *minor dents, some loss*, 13cm high

R12 000 - 15 000

PROVENANCE
 Purchased from Kunstveilingen Mak van Waay, N.V., Amsterdam, the Mrs H.C.A.M. Guttig-Hannik collection, 24-26 October 1969, lot 966.



137

137
A Chinese blue and white tea caddy, Qing Dynasty, Qianlong period, 1736-1795

octagonal, painted with panels of peonies, the shoulder with a *café au lait* glazed-line border, with later Dutch silver cover, apparently unmarked, 12,5cm high

R9 000 - 12 000

PROVENANCE
 Purchased from Kunstveilingen Mak van Waay, N.V., Amsterdam, the Mrs H.C.A.M. Guttig-Hannik collection, 24-26 October 1969, part lot 966.



138

138
A Chinese Export famille-rose
Armorial plate, Qing Dynasty,
1785-1791

commissioned for the Cape market, octagonal, with gilt rim, the cavetto enamelled with a dark blue double border decorated with gilt stars enclosing enamelled sprays of flowers and fruit, with the Van Schuler/Van Aerssen coat of arms supported by a griffon and a lion and surmounted by a ducal coronet of five strawberry leaves, the centre painted with a further spray of fruit, flowers and foliage, the rim re-gilded, 22,7cm wide

R15 000 - 20 000

PROVENANCE

This plate was part of the last armorial dinner-service made during the Company's regime, ordered by Cornelis van Aerssen Beyeren, Lord of Voshol [who] arrived at the Cape in April 1785' (Woodward, C.S., *Oriental Ceramics at the Cape of Good Hope 1652-1975: An account of the porcelain trade of the Dutch East India Company with particular reference to ceramics with the V.O.C. monogram, the Cape market, and South African collections*, A.A. Balkema, Cape Town, 1974, pg. 125)



139

139
A Chinese jar and cover,
Qing Dynasty, Qianlong
period, 1736-1795

decorated in the *Imari* palette, the ovoid body painted with a contesting *kylin* and phoenix amongst peony, lotus and chrysanthemum blossoms, with a further phoenix perched on a scholar's rock, all enclosed by double blue-line and diaper borders, the cover painted with peonies and scrolling foliage amongst scholar's rocks enclosed by blue-line borders and gilt rim, 23,6cm high

R8 000 - 10 000

140

A Chinese doucai dish, Qing Dynasty, Qianlong period, 1736-1795

circular, the centre painted with a gnarled magnolia tree highlighted in gilt, the cavetto with four cartouches enclosing sprigs of flowers enclosed by a diaper ground with flowerheads, the border with further sprays of blossoms amongst rocky outcrops enclosed by a blue-line border, sienna-glazed rim, the reverse with two sprays of peonies in iron-red, fritting chips, 22,2cm diameter

R1 200 - 1 500



140

141

A Chinese doucai dish, Qing Dynasty, Qianlong period, 1736-1795

circular, the centre enamelled with a gnarled tree highlighted in gilt with magnolias and peonies before a foliate ground and a rocky outcrop enclosed by a double iron-red-line border, sienna-glazed rim with spearhead and blue-line border, the reverse with two sprays of peonies below a double blue-line, 30cm diameter

R7 000 - 9 000



141

142

A Chinese famille-rose dish, Qing Dynasty, Qianlong period, 1736-1795

oval, the centre enamelled with a pair of peacocks perched on a rocky outcrop amongst tufts of grass, with sprays of peonies and blooms issuing from a further outcrop, enclosed by a spearhead cavetto, the border with four sprays of blooms below four cartouches enclosing a pair of stylised *chilong* interspersed with a diaper ground, sienna-glazed rim, 26,8cm wide

R3 000 - 4 000



142

143

A pair of Chinese famille-rose dishes, Qing Dynasty, Qianlong period, 1736-1795

each enamelled to the centre with a peony amongst blossoms, the border with further sprays of peonies against stylised lappets, sienna-glazed rim, the reverse with four stylised *linghzi*, minor rim chip, 28cm diameter (2)

R8 000 - 10 000



143

144

A Chinese famille-rose and rouge-de-fer dish, Qing Dynasty, Qianlong period, 1736-1795

rectangular with canted corners, the centre painted and enamelled with sprays of peony blossoms and foliage enclosed by a double black-line border within a wavy cavetto, the moulded border with four cartouches enclosing prunus blossoms against a diaper ground, with further blossoms against a diaper ground, with moulded rim, the reverse painted with sprays of peony blossoms, glaze chips, 31,2cm wide

R4 000 - 6 000



144

145

A Chinese famille-rose teapot, Qing Dynasty, late 18th/early 19th century

baluster, the body enamelled with a cockerel amongst prunus and peonies before a rocky outcrop, the side applied with a loop handle, the cover with spire-shaped finial enamelled with a flowerhead, enclosed by further peonies and a red diaper border, raised on a low foot, 11,6cm high; a Chinese famille-rose dish, Qing Dynasty, late 18th/early 19th century, oval with wavy rim, the centre enamelled with a cockerel amongst peonies and prunus before a rocky outcrop enclosed by a Greek-key border, 13cm wide; and a pair of Chinese famille-rose dishes, Qing Dynasty, late 18th/early 19th century, each petal-shaped, one enamelled with a peacock amongst peonies, *linghzi* and scholar's rocks, the other with two pheasants amongst blooms, the rim enclosed by five fan-shaped cartouches enclosing stylised *chilong* and flowerheads between a diaper ground, 12,9cm wide (4)

R3 000 - 5 000



145

146

A pair of Chinese famille-verte saucer dishes, Qing Dynasty, Kangxi period, 1622-1722

circular, each enamelled with chrysanthemums, prunus and peonies amongst foliage and *linghzi* enclosed by a double blue-line border, the cavetto with petal-shaped border enclosing further sprays of prunus blossoms, the whole enclosed by a diaper ground band, wavy rim, the reverse with *café au lait* glaze, raised on a low foot, *mark of commendation within a double blue-line ring*, 13cm diameter; and a Chinese teapot, Qing Dynasty, 18th century, later decorated in the Meissen style, the body painted with blossoms amongst scrolling foliage with birds and butterflies, the side applied with a loop handle, the cover similarly decorated surmounted by a spire-shaped finial, raised on a low foot, with *pseudo underglaze iron-red crossed swords*, chips, 13,5cm high (3)

R4 000 - 6 000



146

147

Three Chinese famille-rose dishes, Qing Dynasty, Qianlong period, 1736-1795

each centre decorated with a pair of Buddhist lions contesting two ribboned balls, the cavetto decorated *en grisaille*, overpainted with iron-red and gilt flowerheads, the rim enamelled with lilies and peonies enclosed by a spearhead border, with a sienna-glazed rim, *wear to the enamels*, with *retailer's paper label to the reverse*, 22,6cm diameter (3)

R3 000 - 4 000



147

PROVENANCE

Purchased from Waria, Konst & Antikvitetshandel, Goteborg.

148

A Chinese famille-rose bowl, Qing Dynasty, Qianlong period, 1736-1795

circular, the centre enamelled with peony blooms and a central ribbon-tied flower-filled basket enclosed by a four-sided medallion with scrolling foliate green-line border within a brocaded ground, the reverse similarly decorated, with a pale blue diaper band, gilt rim, raised on a low foot enclosed by a gilt-line border, 11,8cm diameter

R3 000 - 4 000



148

149

Three Chinese famille-verte dishes, Qing Dynasty, 19th century

circular, each enamelled with four crickets and a frog amongst blossoms, the reverse with four stylised bats, raised on a low foot, gilt rim, *iron-red six-character mark*, 12,5cm diameter (3)

R1 500 - 2 000



149

150

A set of nine Chinese famille-rose plates, Qing Dynasty, Qianlong period, 1736-1795

circular, each centre enamelled with a single peony amongst blossoms, enclosed by a turquoise diaper band, sienna-glazed rim, *fritting chips, hairline cracks, enamel loss*, 23cm diameter (9)

R5 000 - 7 000



150



151

151
A set of five Chinese famille-rose plates, Qing Dynasty, Qianlong period, 1736-1795

circular, each centre enamelled with a ribbon-tied spray of peonies and further sprays of blossoms, enclosed by a turquoise diaper band, sienna-glazed rim, *fritting, enamel loss*, 22,7cm diameter (5)

R2 500 - 3 000



152

152
A set of six Chinese famille-rose plates, Qing Dynasty, Qianlong period, 1736-1795

circular, each centre painted with a double spray of peonies and blossoms, enclosed by a turquoise band interspersed with flowerheads, sienna-glazed rim, *fritting, hairline cracks, enamel loss*, 23cm diameter (6)

R3 000 - 4 000



153

153
A set of eight Chinese famille-rose plates, Qing Dynasty, Qianlong period, 1736-1795

circular, each centre enamelled with a tulip and sprays of peonies enclosed by a turquoise diaper band, sienna-glazed rim, *fritting chips, hairline cracks, enamel loss*, 23cm diameter (8)

R5 000 - 7 000

154

A Chinese blanc-de-chine figure of Guanyin, Qing Dynasty, 18th/19th century

the robed figure adorned with a lotus beaded necklace, holding a scroll in her left hand, her right hand resting on her knee, seated on a saddled Buddhist lion with a curly mane and tail, *restorations, some loss, firing crack, 20cm high*

R9 000 - 12 000

154



155



155

A Chinese iron-red enamelled vase and cover, Qing Dynasty, late 19th century

ovoid, the body decorated with various blooms including lotus and *shou* symbols headed by peaches, bats and knots, all amongst scrolling foliage, enclosed by a stiff-leaf and line border, the shoulder with prunus blossoms against a diaper ground, the cover similarly decorated, *underglaze-blue double-ring mark, 30cm high*

R8 000 - 10 000

156



156

A pair of Chinese famille-rose bowls, Qing Dynasty, Daoguang, 1821-1850

each enamelled to the interior with a pair of birds amongst prunus blossoms, *linghzi* and a peony, the exterior similarly enamelled, the rim with a pale blue line, raised on a low foot, *underglaze iron-red six-character Daoguang mark, 12,5cm diameter (2)*

R8 000 - 10 000

157



157

A pair of Chinese blue and white vases, Qing Dynasty, late 19th century

each tapering ovoid with everted rim, painted with a sage beneath a pine tree, flanked by a pair of young male attendants each holding a chrysanthemum spray in his left hand, before a balustraded rocky outcrop, the reverse painted with a butterfly, one with firing fault and chip to footrim, the other with hairline crack, underglaze-blue double-ring mark, 35cm high (2)

R6 000 - 8 000



158

158

A Chinese glass and metal-mounted centerpiece, Qing Dynasty, 19th century

the stand with central knopped column moulded with prunus blossoms against a diaper ground surmounted by three pierced cloud-and-flowerhead panels interspersed with three stylised *chilong* supports, raised on a stepped dish with pierced scroll-and-foliate wave rim, pierced lappet-shaped apron, raised on three lion-mask feet, the trumpet-shaped blue glass vase moulded with six teardrops, stylised bats and *linghzi*, minor dent to one metal support, 42,2cm high

R8 000 - 10 000

159

A Chinese crystal bead and blue glass court necklace, Chaozhu, Qing Dynasty, 19th century

strung with one hundred and eight crystal beads, spaced by four carved spherical blue glass *fotou*, to a two-part blue glass *fotouta* and carved blue glass *beiyun* suspending a gilt-metal mounted blue glass *dazhuijiao*, with three strings of *jinian* composed of carved stained beads suspending further gilt-metal mounted blue glass pendant drops, length approximately 160cm

R60 000 - 80 000

*This lot is not suitable for export



159



160



161



162



163

160
A Chinese pale celadon jade snuff bottle, Qing Dynasty, 19th century

the flattened vase-shaped body carved with prunus blossom branches, with *later* pink and green stopper, the stone of pale green tone, *the bottle 6,4cm high*; another, with trapezoid body, the sides applied with mask-and-ring handles, raised on a low foot, with red stopper, the stone of pale green tone with mottled white inclusions, *minor chips, the bottle 5,1cm high*; and another, pebble-shaped, with amber stopper, the stone of green tone, *minor chips, the bottle 5cm high* (3)

R15 000 - 20 000

*This lot is not suitable for export

161
A Chinese glass snuff bottle, Qing Dynasty, 19th century

the flattened ovoid body with carved ring-and-mask-headed handles, raised on a low oval foot, the glass of pale mottled orange and amber tone with black and brown inclusions, with agate stopper, *lacking snuff spoon, the bottle 8,3cm high*

R7 000 - 9 000

162
A Chinese amber cicada snuff bottle, Qing Dynasty, 19th century

with finely carved body and wings, its legs tucked beneath its body, with jade stopper, *minor chips, the bottle 5,5cm long*; and a Chinese obsidian 'snowflake' snuff bottle, 20th century, tapering ovoid, raised on an oval foot, with *later* amber stopper, *minor chips, the bottle 6cm high* (2)

R7 000 - 9 000

*This lot is not suitable for export

163
A Chinese pale celadon jade carving of a finger citron, Qing Dynasty, 19th century

borne on a leafy stem, the stone of pale celadon tone with white and brown inclusions, *minor chips, loss, repair, 6,5cm high*

R8 000 - 10 000



164

164
A Chinese celadon jade carving of a lily pod, Qing Dynasty, 19th century

carved with a central pod flanked by another smaller, a bloom and a *linghzi*, resting on lily leaves and stems, *minor chips*, 4,8cm wide

R5 000 - 7 000



165

165
A Chinese celadon and russet jade carving of a boulder, Qing Dynasty, 19th century

of irregular rectangular-shaped profile, the front carved with a cascading river flanked by pine trees, rocky outcrops and dwellings, a fisherman sitting on a ledge reeling in a fish, the stone of mottled green and russet tone with white inclusions, *fissure cracks*, *minor chips and losses*, 12,3cm high

R7 000 - 9 000



166



167

166
A Chinese agate bowl, Qing Dynasty, 19th century

circular, with petal-shaped rim and lobed sides, the whole carved in the shape of a flowerhead, raised on a low foot, *minor fritting chips*, 10cm diameter

R10 000 - 15 000

167
A Chinese agate bowl, Qing Dynasty, 19th century

circular, with slightly flared sides, raised on a low foot, *minor fritting*, *chips and hairline cracks*, 11,1cm diameter

R10 000 - 15 000

168

**Chinese School, Qing Dynasty,
19th century**

gouache on paper, rectangular, painted
with figures before buildings and a park
entrance, *tear, framed, 18 by 24,7cm*

R8 000 - 10 000



168

169

**A Chinese bamboo scholar's
brushpot *bitong*, Qing Dynasty,
19th century**

oval, the body carved with a continuous
scene of figures in conversation before
pagodas amongst pine trees and rocky
outcrops, with further figures at various
pursuits within each pagoda, the rim
carved with clouds, the base with
Sanskrit inscription, *age cracks, 15cm
high*; and another, smaller, cylindrical,
carved to the front with a cartouche
enclosing a scholar seated beneath a
maple tree attended by two boys with
a further boy observing from a pagoda,
the reverse with a rondel enclosing a
pair of birds amongst scrolling clouds,
the sides interspersed with five-
character script, the whole enclosed
by a circle-and-dot diaper border, with
inverted foot, *age cracks, 13cm high (2)*

R10 000 - 15 000



169

170

**A Chinese hongmu drum stool,
Qing Dynasty, 19th century**

of barrel form, the circular top above a
reeded apron, raised on six interlocking
looped supports, on a circular moulded
base with wave-shaped bracket feet,
*restorations, numbered 889, 47,1cm high,
39,7cm diameter*

R15 000 - 20 000



170

171

**A Chinese Export hongmu
and silver-inlaid stand,
early 20th century**

the openwork vase-shaped frame
united by five platform shelves, with
fretwork apron, on scroll feet, inlaid with
clouds and triangular motifs, *repairs,
77cm high, 54cm wide, 20cm deep*

R15 000 - 20 000



171

172

A Burmese bronze figure of Amitāyus, the Buddha of Eternal Life, 17th century

the figure with downcast eyes, *ushnisha* and a 'jewelled' flaming crown, seated in *padmasana* with hands resting in *dhyanamudra* holding a *kalasa* containing three feathers, raised on a pierced lotus throne highlighted with swirling borders, *lacking mandorla and jewels to the crown*, 41,5cm high

R80 000 - 100 000



172

173

A Japanese Arita blue and white dish, late 17th century

the centre painted with a flower-filled vase enclosed within a double blue-line border, the rim with floral panels, the reverse painted with scrolling foliage, raised on a low foot, *scratches*, 31,8cm diameter

R7 000 - 9 000

PROVENANCE

Carel Adolph Lion Cachet Collection and thence by descent to the current owner.



173

174

A Japanese Arita blue and white dish, late 17th century

the centre painted with four *ho-o* birds amongst peonies and bamboo before scholar's rocks enclosed within a double blue-line border, the rim with alternating panels of peonies and Buddhist emblems, the reverse painted with scrolling foliage, raised on a low foot enclosed by a double blue-line border, *hairline crack*, 26,8cm diameter

R5 000 - 7 000



174

175

A Japanese figure of a *shi-shi*, Meiji period, 1868-1912

modelled seated on its haunches with extended legs and yellow claws, with yellow teeth, licking its left leg with a red tongue, the turquoise body decorated with circles highlighted in gilt, with black mane, eyebrows and bushy tail, *minor chips to the highlights*, 19,5cm high

R5 000 - 7 000



175

176



177



178



179



176

A Japanese wood carving of a sleeping Karako, Meiji period, 1868-1912

the robed figure resting his head on his arms, 4,5cm high

R4 000 - 6 000

177

A Japanese wood netsuke of a lily pod, Meiji period, 1868-1912

the articulated seeds within a finely-carved pod with a snail to one side, minor loss, 4cm wide

R6 000 - 8 000

178

A Japanese wood carving of a Daruma, Meiji period, 1868-1912

with articulated eyes and tongue, with startled expression, minor hairline crack to the tongue, 3,6cm high

R4 000 - 6 000

179

A Japanese bronze moon hare bird feeder, Meiji period, 1868-1912

modelled seated on its haunches, its paws clasping a bowl, with fixed ring attachment, 12cm long

R5 000 - 7 000



180



181



182



183

180

A Japanese bronze okimono of a crab, Meiji period, 1868-1912

circular, the intertwining bamboo and trailing leaves enclosing a small crab, 3,7cm high

R4 000 - 6 000

181

A Japanese patinated pewter study of a swan, Meiji period, 1868-1912

finely carved, resting its head on its back, the reverse with webbed feet, 8cm long

R3 000 - 4 000

182

A Japanese black and gilt lacquer 'fubako', Edo period, 17th/18th century

rectangular, the loose cover decorated in *hiramaki-e* against a *roiro* ground with three fans, depicting small birds amongst bamboo, an owl resting on a prunus branch and two figures with fans before a balustraded garden, the reverse with a rooster perched on a wine barrel, with a hen and three chicks below, gilt interior, the sides similarly decorated and applied with metal flowerhead-and-loop handles, *nashiji* base, losses, 5,3cm high, 24,4cm wide, 9cm deep

R6 000 - 8 000

183

A Japanese lacquered table cabinet, late 19th/early 20th century

the pagoda-shaped top with gilt edge moulded with a shaped cartouche enclosing a pair of birds resting on a fruiting branch, enclosed by a diaper border, a pair of doors below similarly moulded enclosing a pair of red velvet-lined drawers, a long drawer below enclosing two red velvet-lined compartments, the sides applied with carrying-handles and moulded with cherry blossoms, the reverse with bamboo and a rocky outcrop, shaped apron, on stile feet applied with metal mounts, the whole with *nashiji* to each branch, 32cm high, 30cm wide, 20,2cm deep

R6 000 - 8 000

LOTS 184-190
NO LOTS