





The Vineyard Hotel, Newlands, Cape Town
30 March – 10am

**Jewellery, English Silver and Furniture
Continental Furniture, Ceramics, Glass
and Contemporary Furniture**

Lots 121–290

Lot 276 A Louis XV style ormolu-mounted boule ebonised longcase clock (detail)



121

**121
Edwardian diamond
negligée pendant**

designed as knife-edge bar links millegrain collet-set with an oval cushion-cut diamond and four old-cut round diamonds suspending two articulated knife-edge drops highlighted with three old-cut diamonds and terminating in two old-cut round diamonds weighing a total of approximately 5.50-6.00 carats, to a fine link chain, *length approximately 445mm*

R55 000 - 60 000

**122
Victorian diamond, emerald
and ruby-set brooch, retailed
by N.BLOOM & SON, London**

designed as a bee, its thorax and wings set with rose-cut diamonds and emeralds, ruby-set eyes, *width approximately 27mm*

R7 000 - 9 000

122



**123
Pair of diamond earrings**

with interchangeable attachments, each of foliate design claw-set with a pear-shaped diamond weighing approximately 0.70 carat, the stylised leaves pavé-set with round brilliant-cut and single-cut diamonds, post and buckle fittings with suspension loop, length approximately 20mm; a pair of detachable aquamarine and diamond pendant drops, each claw-set with a pear-shaped aquamarine weighing a total of approximately 13.70 carats accented with single and round brilliant-cut diamonds weighing approximately 1.59 carats, length approximately 45mm; a pair of detachable diamond and emerald pendant drops, each claw-set with a pear-shaped emerald weighing a total of approximately 3.50 carats accented with round brilliant-cut diamonds weighing approximately 1.45 carats, length approximately 35mm; and a pair of detachable diamond and pearl pendant drops, each pearl drop accented with a pear-shaped diamond surmount weighing approximately 0.60 carat, length approximately 38mm; the above approximate measurements include the length of each diamond earring surmount (8)

R140 000 - 150 000



123

124



**124
Emerald and diamond brooch**

of stylised foliate and ribbon design, set with old-cut diamonds weighing approximately 2.90 carats and highlighted with a claw-set pear-shaped emerald weighing approximately 1.40 carats, *width approximately 45mm*

R55 000 - 60 000

125



125
Lady's diamond and 18ct white gold cocktail watch, 1930s

with nickle-lever movement, the octagonal cream face with arabic numerals, blued steel hands, diamond-set bezel and shoulders set with old-cut single diamonds weighing approximately 0.35 carat, to a *later* stainless steel tubogas bracelet with folding clasp, *not in working order*, bezel diameter approximately 22mm

R10 000 - 12 000

126
Emerald and diamond ring

of bombé design, claw-set to the centre with a pear-shaped emerald weighing approximately 2.00 carats, surrounded by pavé-set round brilliant-cut diamonds weighing approximately 5.78 carats, size M½

R65 000 - 70 000

126



127

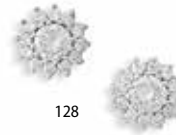


127
Aquamarine and diamond pendant

collet-set with a faceted oval-cut aquamarine weighing approximately 27.85 carats, the open-work scroll frame surmounted by rose- and old-cut diamond-set flowerheads and foliage, to a diamond-set bale, length approximately 40mm

R70 000 - 75 000

128



128
Pair of diamond and white gold earrings

designed as a flowerhead, each claw-set to the centre with a round brilliant-cut diamond within a surround of brilliant-cut diamonds weighing approximately 1.65-1.70 carats, *post and butterfly fittings*, length approximately 15mm (2)

R30 000 - 35 000

129



129
Diamond and gold pendant

claw-set to the centre with a round brilliant-cut diamond weighing approximately 0.50-0.55 carat surrounded by a claw-set diamond bezel, to a diamond-set bale, length approximately 15mm; with a fine 18ct white gold chain, length approximately 400mm (2)

R20 000 - 25 000



130

131

132



133



134



135



**130
14ct gold fancy link bracelet,
Boodle and Dunthorne,
London, 1987**

composed of a series of textured rope work rectangular and baton links, *length approximately 180mm; cased*

R20 000 - 22 000

**131
Italian diamond and
18ct gold bracelet**

designed as a woven double row gold bracelet accented with three diamond-set x-shaped batons, to a barrel-shaped clasp, *length approximately 185mm*

R15 000 - 20 000

**132
Diamond cluster dress ring**
collet-set to the centre with a round brilliant-cut diamond weighing approximately 2.00 carats surrounded by twelve claw-set round brilliant-cut diamonds weighing approximately 0.25 carat, *four stones missing, size J½*

R70 000 - 75 000

**133
Diamond ring**
of bombé design pavé-set with round brilliant- and single-cut diamonds weighing approximately 2.00 carats, *to a curved shank fitted with a size adjuster, size M½*

R14 000 - 16 000

**134
Pair of amethyst and
diamond earrings**
each claw-set with a checkerboard amethyst accented with a border of round brilliant-cut diamonds weighing approximately 0.90 carat, *post and clip fittings, diameter approximately 15mm (2)*

R8 000 - 10 000

**135
Strand of opera-length pearls**
composed of one hundred and fourteen pearls measuring approximately 7mm, set to a citrine quartz and seed-pearl gold clasp, *length approximately 850mm*

R8 000 - 10 000



137

136



138



139



136

Tourmaline and diamond brooch

claw-set to the centre with an emerald-cut bluish-green tourmaline weighing approximately 3.20 carats, to shaped shoulders millegrain-set to a line of single-cut diamonds weighing approximately 0.45 carat, *length approximately 55mm*

R8 000 - 10 000

138

Tourmaline and diamond dress ring

claw-set to the centre with a rectangular step-cut bluish-green tourmaline weighing approximately 18.80 carats, the shoulders accented with round brilliant-cut diamonds weighing approximately 1.40 carats, to an open square-shaped shank, *size Q½*

R50 000 - 55 000

137

Tourmaline, diamond and gold necklace

designed as an articulated line of alternating claw-set oval-cut pink and green tourmalines weighing approximately 15.80 carats interspersed with pavé-set round brilliant-cut diamond rondelles weighing approximately 1.12 carats to a flat curb-link chain, *length approximately 455mm*

R25 000 - 28 000

139

Tourmaline and diamond bracelet

designed as an articulated line of alternating claw-set oval-cut pink and green tourmalines weighing approximately 13.10 carats interspersed with pavé-set round brilliant-cut diamond rondelles weighing approximately 1.11 carats, *length approximately 185mm*

R20 000 - 25 000

140

Tourmaline and diamond brooch/pendant

claw-set with a round mixed-cut slightly yellowish green tourmaline weighing approximately 10.00 carats accented by round brilliant-cut and tapered baguette-cut diamonds set to open-work knife-edge bars weighing approximately 5.40 carats, *width approximately 50mm*

R60 000 - 70 000

140



141



**141
Diamond, sapphire and ruby
brooch, Charles Grieg**

designed as a bee, its thorax collet-set with a cabochon-cut sapphire and ruby-set eyes, *width approximately 30mm; cased*

R6 000 - 8 000

142



**142
Italian diamond and gold
brooch, Gioielleria Casini**

designed as a bee, with diamond-set thorax and sapphire-set eyes, *width approximately 20mm*

R7 000 - 9 000

143



**143
Strand of opera length pearls**

composed of one hundred and one semi-baroque pearls measuring 8mm, to two lozenge-shaped gold clasps each accented with a navette-shaped panel of pavé-set round brilliant-cut diamonds, *length approximately 980mm*

R7 000 - 9 000

144



**144
Diamond, ruby and
sapphire gold ring**

designed as a three-leaf clover, claw-set with a cushion-cut ruby and sapphire with two old- and rose-cut diamonds, *size E½*

R7 000 - 9 000

145



**145
Garnet and diamond ring**

collet-set to the centre with a rectangular cushion-cut garnet weighing approximately 1.60 carats, heightened with four claw-set round brilliant-cut diamonds, *size M½*

R8 000 - 10 000

146



**146
Lady's diamond and 18ct
gold bangle watch, Baume &
Mercier, Ref 20342-1**

manual wind with seventeen jewel nickle-lever movement, the rectangular gilt dial with arabic numerals and dot markers, gold sword hands, with inscribed dial, the shoulders line-set with eight brilliant-cut diamonds, to an integral hinged adjustable bangle, *signed, inner diameter approximately 50mm, bezel width 13mm*

R15 000 - 20 000

147

Gold, ruby, sapphire, chalcedony and diamond pendant in the form of a clown

the articulated figure's cap collet-set with a cabochon-cut sapphire, his knees with cabochon-cut chalcedony, his tunic with a round faceted-cut ruby and his collar pavé-set with round brilliant-cut diamonds, *length approximately 43mm*; an Italian 9ct gold chain, composed of flattened box-links, *length approximately 600mm*; and an Italian 9ct gold bracelet, composed of flattened curb-links, *length approximately 185mm* (3)

R20 000 - 25 000

147



148

Italian 14ct gold necklace with enamel and diamond pendant

the 14ct gold woven necklace with bolt-shaped clasp, suspending a blue enamelled heart-shaped pendant accented with round brilliant-cut diamonds to a hinged bale, *length approximately 440mm* (2)

R18 000 - 20 000

148



149

18ct gold, tourmaline and diamond pendant

collet-set with an oval mixed-cut bluish-green tourmaline weighing approximately 4.50 carats to a pierced arrowhead shaped surmount collect-set with a round brilliant-cut diamond, *length approximately 20mm*

R8 000 - 10 000

149



150



151



150

Tourmaline and diamond dress ring

centrally claw-set with an emerald-cut green tourmaline weighing approximately 1.50 carats to an open-work shield-shaped bezel pavé-set with fifteen round brilliant-cut diamonds, *size M½*

R6 000 - 8 000

151

Pair of Italian diamond and 9ct gold earrings

each hoop embellished with a diamond-set five pointed star, *length approximately 17mm* (2)

R10 000 - 12 000

152

14ct gold case

textured rectangular with hinged cover, the thumbpiece set with a cabochon-cut blue sapphire, *measurements approximately 93mm x 80mm x 20mm*

R75 000 - 85 000

152





153

**153
Tourmaline and diamond
necklace**

claw-set to the front with a round mixed-cut slightly greenish blue tourmaline weighing approximately 25.00 carats accented by claw-set round brilliant-cut diamonds surmounted to a part diamond-set necklace weighing approximately 5.00 carats, to an articulated brick-link necklace, length approximately 390mm

R200 000 - 250 000



154

**154
Diamond brooch, 1960s**

designed as ribbons embellished throughout with lines of old, eight-cut and round brilliant-cut diamonds weighing approximately 2.60 carats, centring a claw-set baguette-cut diamond weighing 0.8780 carat, flanked by two smaller baguette-cut diamonds, width approximately 50mm

Accompanied by report number 200210010/128890 from E.G.L. South Africa, stating that the diamond weighing 0.8780 carat is I in colour and SI¹ in clarity

R35 000 - 40 000



155

**155
Pair of diamond and white
gold half-hoop earrings**

claw-set with round brilliant-cut diamonds weighing approximately 1.50 carats, post and butterfly fittings, length approximately 15mm (2)

R15 000 - 18 000



156

**156
Diamond dress ring**

claw-set to the centre with a rectangular emerald-cut diamond weighing approximately 1.15 carats surrounded by eight baguette-cut diamonds and rectangular plaques set with eight-cut diamonds weighing approximately 2.00 carats, to a curved shank fitted with a size adjuster, size K

R62 000 - 65 000



157

**157
Diamond brooch**

designed as a ribbon spray set throughout with round brilliant-cut, baguette and eight-cut diamonds weighing approximately 9.00 carats, width approximately 70mm

R80 000 - 82 000



158

**158
Tourmaline and diamond
brooch/pendant**

centrally claw-set with a round mixed-cut bluish-green tourmaline weighing approximately 24.00 carats surrounded by round brilliant-cut and marquise-cut diamonds weighing approximately 7.40 carats, *width approximately 40mm*

R185 000 - 200 000



159

**159
Pair of green tourmaline
and diamond earrings**

each claw-set with a round mixed-cut green tourmaline weighing approximately 11.60 carats, the stepped bezel pavé-set with single-cut diamonds to a diamond-set surmount, weighing approximately 1.00 carat, *one fitting faulty, post and clip fittings, length approximately 23mm (2)*

R20 000 - 25 000

**160
Diamond and white gold
tennis bracelet**

claw-set with forty-five round brilliant-cut diamonds weighing approximately 5.00-5.50 carats, *length approximately 180mm*

R55 000 - 60 000

160



161

**161
Single-stone diamond ring**

claw-set to the centre with a round brilliant-cut diamond weighing 3.1050 carats, to bifurcated shoulders, *size L*

Accompanied by report number 190811949/127139 from European gemological Laboratory of South Africa stating the diamond weighing 3.1050 carats is J in colour and VS¹ in clarity

R280 000 - 300 000

162



**162
Diamond brooch**

the openwork spray channel-set with baguette-cut diamonds and clusters of claw-set round brilliant-cut diamonds weighing approximately 4.80 carats, *length approximately 32mm*

R40 000 - 45 000



164

163



**163
An Art Deco five-stone
diamond ring, 1930s**

claw-set to the centre with an emerald-cut diamond weighing 2.86 carats, between four tiered baguette-cut diamond shoulders, size O

Accompanied by report number 6341848586 from Gemological Institute of America, stating that the diamond weighing 2.86 carats is D in colour and VS2 in clarity

R315 000 - 320 000

**164
Baroque pearl necklace**

the single row composed of twenty-seven baroque pearls measuring approximately 15.5mm-16mm, set to a single baroque pearl clasp, length approximately 465mm

R3 000 - 5 000

**165
Diamond eternity ring**

claw-set with round brilliant-cut diamonds weighing approximately 2.40-2.50 carats, size N

R18 000 - 20 000

165



166



**166
Pair of Italian diamond and
white gold earrings**

designed as a hoop, claw-set to the front with round brilliant-cut diamonds weighing 1.38 carats, length approximately 18mm (2)

R14 000 - 16 000

167



**167
A pair of diamond and white
gold bangles**

hinged, highlighted at intervals with thirty-six round brilliant-cut diamonds weighing approximately 1.10 carats, inner circumference approximately 53mm (2)

R35 000 - 40 000



168

168 Diamond ring

claw-set to the centre with a natural fancy brown-yellow emerald-cut diamond weighing 2.93 carats to a bezel embellished with claw-set round brilliant-cut diamonds, *size M*

Accompanied by report number 10667112 from GIA Gem Trade Laboratory of America stating that the diamond weighing 2.93 carats is natural fancy brown-yellow even in colour and SI² in clarity

R130 000 - 140 000

169

169 Diamond and white gold tennis bracelet

claw-set with cognac and round brilliant-cut diamonds weighing approximately 5.00-6.00 carats, *length approximately 175mm*

R55 000 - 60 000

170 Diamond platinum and gold dress ring

collet-set to the centre with a rose-cut brownish, greenish diamond weighing 5.38 carats surrounded by round brilliant-cut diamonds weighing 1.40 carats, *size N½*

R55 000 - 60 000

170

170 Diamond pendant

claw-set with a round brilliant-cut natural fancy deep orange-yellow diamond weighing 2.53 carats, set to a bale, *length approximately 12mm*

Accompanied by report number 5201774996 from Gemological Institute of America stating that the diamond weighing 2.53 carats is natural, fancy deep orange-yellow even in colour

R95 000 - 100 000

171

171 Lady's 18ct rose gold and stainless steel 'Serpenti Tubogas' Bulgari wristwatch, Ref. SP 35 SPG

automatic movement, curved case with cream enamelled dial, applied roman numerals and faceted baton markers, *dauphine* hands, the crown set with a cabochon-cut pink rubellite, integrated 18ct pink and stainless steel extension bracelet, *signed dial, case and movement, the bezel width approximately 35mm, the case stamped Acier/Au 750, 18K, SP 35 SPG, PO 4657, instruction booklet and warranty*

R60 000 - 80 000

172





173



176



174



175



**173
Italian 'Yukiko' 18ct gold necklace**

composed of a series of open brick-shaped links to a bolt ring clasp, stamped with maker's mark, length approximately 440mm

R42 000 - 44 000

**176
Jade, onyx and diamond ring**

collet-set with a square cabochon-cut jade stone within a stepped onyx surround accented by four round brilliant-cut diamonds, size S

R6 000 - 8 000

**174
18ct gold and ebony bracelet, 1970s**

composed of cable and arched connector links, interspersed with two ebony rectangular-shaped links, length approximately 195mm

R24 000 - 26 000

**177
9ct gold novelty whistle**

with suspension loop, length approximately 30mm

R4 000 - 6 000

**178
18ct gold Patek Philippe ball-point pen**

the top set with a glass matrix, engraved Patek Philippe, 18K, 750, the chrome shaft stamped 9604, length approximately 135mm

R10 000 - 15 000

**175
Pair of 18ct gold, mother-of-pearl and onyx earclips, Tiffany & Co**

rectangular, each gold plaque inlaid with wave-shaped patterns, buckle fittings, width approximately 25mm, cased (2)

R15 000 - 20 000



177



178



179

179
Pair of diamond, onyx and gold earrings

the shell-shaped ribbed base with a v-shaped collar set with round brilliant-cut diamonds and a collet-set pentagon-shaped onyx surmount, post and buckle fittings, length approximately 20mm (2)

R12 000 - 15 000

180
Italian 'Fope' 18ct gold bracelet

composed of a series of brick-shaped links, stamped with maker's mark, length approximately 200mm

R7 000 - 9 000

180

181

181
Black pearl necklace

the single row composed of thirty-one graduated pearls measuring approximately 11.0mm-14.0mm, set to a 14ct white gold S-shaped clasp, length approximately 450mm

R6 000 - 8 000

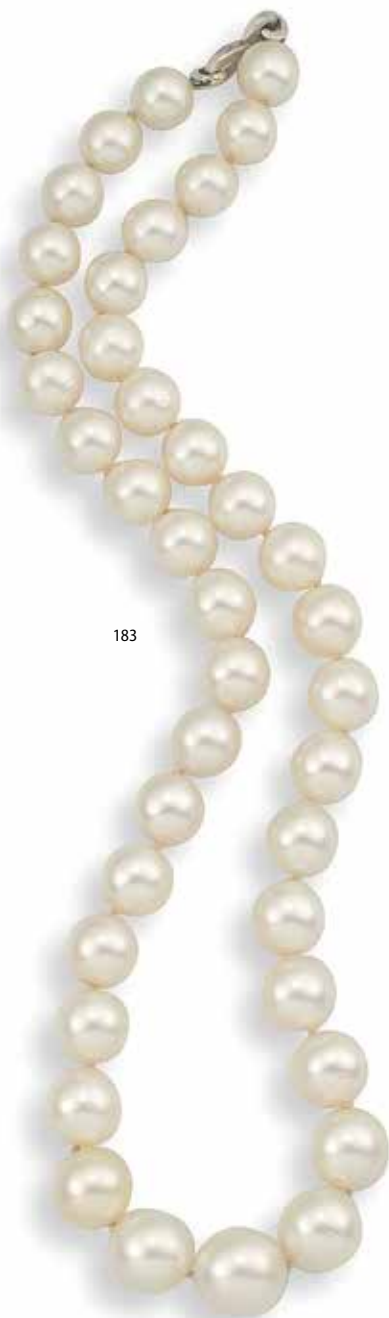
182
14ct gold cigarette case

reeded rectangular with hinged cover and rectangular thumbpiece, enclosing a fitted interior, measurements approximately 110mm x 91mm x 10mm

R90 000 - 95 000

182





183

183
Cultured pearl necklace

the single row composed of thirty-nine graduated pearls measuring approximately 9.9mm-13.8mm, set to a 14ct white gold S-shaped clasp, length approximately 480mm

R6 000 - 8 000

184
Diamond pendant

claw-set with a natural fancy deep brownish yellow round brilliant-cut diamond weighing 1.15 carats, to a bale, length approximately 10mm

Accompanied by report number 2135561166 from Gemological Institute of America, stating that the diamond weighing 1.15 carats is natural fancy deep brownish yellow even in colour and SI² in clarity

R32 000 - 35 000



184



185

185
Diamond pendant

claw-set with a natural fancy deep brown-orange heart-shaped brilliant-cut diamond weighing 1.85 carats to a bale claw-set with a round brilliant-cut diamond, length approximately 10mm; and an 18ct white gold fine link chain, length approximately 420mm (2)

Accompanied by report number 2185095864 from Gemological Institute of America stating that the diamond weighing 1.85 carats is natural fancy deep brown-orange even in colour and SI¹ in clarity

R60 000 - 70 000



186



186
Pair of Italian pearl and gold earrings, Le-Gi

each hoop set with beaded pearls and spherical balls, buckle fittings, applied designer plaque, length approximately 28mm (2)

R5 000 - 7 000

187
Italian 18ct tri-colour gold bracelet

plaited with pink, yellow and white gold woven links, length approximately 190mm

R15 000 - 18 000



187



188

188
Pearl torsade necklace,
attributed to David Thomas,
London, 1970s

designed as eleven strands of fresh water pearls to a gold and diamond-set clasp weighing approximately 1.40-1.50 carats, *length approximately 450mm*

R8 000 - 10 000



189



189



189
Diamond and gold ring
designed by Guy Triest

the domed fluted front accented with four tapering spiral flutes set with thirty-four graduated eight-cut and old-cut diamonds weighing approximately 1.20 - 1.30 carats, *to a curved shank fitted with a size adjuster, size K*; and a pair of diamond and gold earrings, each set with four rows of pavé-set graduated round brilliant-cut diamonds weighing approximately 1.80 carats, *length approximately 25mm (3)*

R28 000 - 30 000



190

190
Lady's 18ct yellow gold and
diamond-set 'Ellipse' Patek
Philippe wristwatch, Ref.
4498, 1980s

manual winding nickel lever 18 jewel movement, mono-metallic balance, the square textured gold dial with rope-twist hands, diamond-set markers at the quarters, the diamond-set bezel with reeded corners, 18ct yellow gold snap-on back to an integrated woven bracelet and adjustable folding clasp, *dial and movement signed, clasp engraved PATEK PHILIPPE, GENEVE, 750, length approximately 155mm, bezel width approximately 24mm*

R80 000 - 85 000

191
Italian 18ct gold bracelet

composed of tri-coloured textured matt gold chevron links, the front with diamond-shaped patterns, heightened with foliate engraving, *length approximately 195mm*

R24 000 - 26 000

191



192



**192
Italian diamond, ruby and
gold brooch, Gioielleria Casini**

designed as a bee, with diamond-
set thorax and ruby-set eyes, *width*
approximately 18mm

R5 000 - 7 000

193



**193
Italian 18ct gold chain**

composed of two-tone elongated
links, *length approximately 690mm*

R16 000 - 18 000

194



**195
Diamond ring**

centrally collet-set with a round
brilliant-cut diamond weighing
approximately 1.50 carats to split
shoulders set with alternating
baguette-cut and round brilliant-cut
diamonds, *size P½*

R70 000 - 75 000

195



**196
18ct gold necklace**

composed of a series of belcher links,
length approximately 700mm

R40 000 - 42 000

196



**194
Single stone diamond ring**

the squared-off bezel collet-set
with a round brilliant-cut diamond
weighing approximately 2.75-2.78
carats, *size E½*

R90 000 - 95 000

**197
Diamond and gold bangle**

double hinged, pavé-set to the front
with fifty-five round brilliant-cut
diamonds weighing approximately
3.00 carats, *inner circumference*
approximately 50mm

R25 000 - 30 000

197





198



198
Pair of gold earrings, retailed by Hooper Bolton, London, 1982

each of pierced abstract outline, buckle fittings, length approximately 20mm, case (2)

R7 000 - 9 000

199
18ct gold ring

composed of pierced irregular shaped links, size J½

R4 000 - 6 000

200
Tourmaline and gold ring, designed by Conti

designed as interlocking stylised amphibious digits with one digit collet-set with a tourmaline weighing approximately 0.60 carat, size O

R7 000 - 9 000



199

201
Italian gold bracelet

composed of a series of textured rope links, to an associated clasp and bolt ring, length approximately 205mm

R8 500 - 9 000

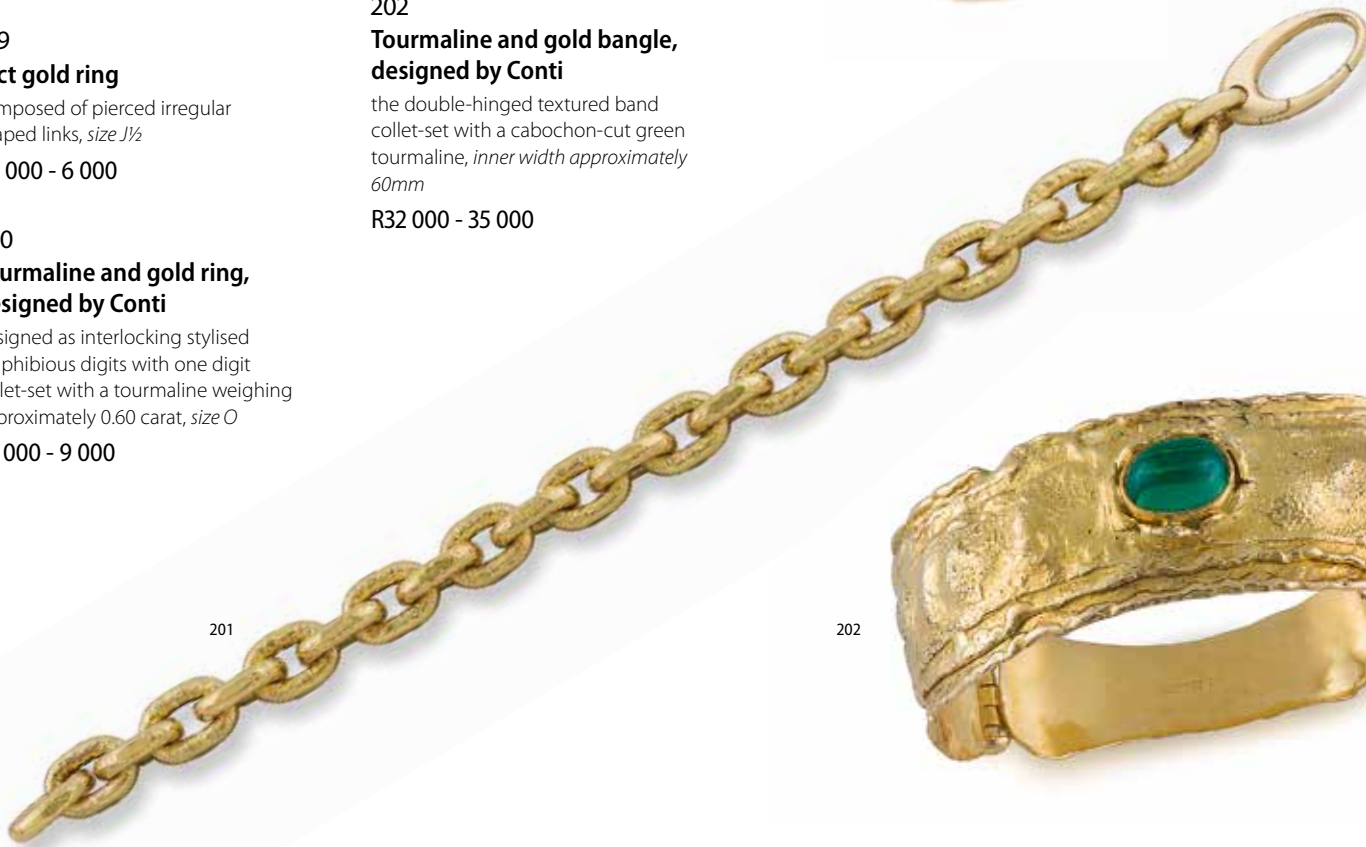
202
Tourmaline and gold bangle, designed by Conti

the double-hinged textured band collet-set with a cabochon-cut green tourmaline, inner width approximately 60mm

R32 000 - 35 000



200



201

202





203



204



205

**203
Chinese carved coral and
silver bracelet, earrings,
ring and brooch**

en suite, collet-set to the centre with square, oval and round coral plaques carved with birds and flowers, to silver filigree wire-work mounts, the earrings with screw fittings, *length of bracelet approximately 170mm, presentation case (5)*

R8 000 - 10 000

* This lot is not suitable for export

**204
9ct gold watch chain necklace**

composed of rope and reeded links, the front suspending an engraved T-bar and a chalcedony stone seal, *length approximately 430mm*

R12 000 - 14 000

**205
Charm bracelet**

the 9ct gold curb-link chain with heart-shaped padlock suspending various charms including a Scottish terrier, a Turkish coffee pot, a zodiac disc, a lion, a cow, a scarab beetle, a springbok, a dolphin, a hedgehog, a giraffe, an owl, an ostrich, a Turkish jewelled slipper, a lion's claw, a pierced medallion and a rickshaw, *inner diameter 50mm*

R10 000 - 12 000



206



207



210



208



209

206

Five-strand pearl choker

designed as five graduated rows of pearls measuring approximately 7.5mm-8.0mm, to a yellow gold clasp centrally set with an oval mixed-cut citrine quartz collet-set with rope-twist borders to an openwork knife-bar frame, inner strand length approximately 320mm

R10 000 - 15 000

207

Madeira citrine and diamond dress ring

collet-set with an oval faceted Madeira citrine weighing approximately 8.80 carats, to a step bezel of round brilliant-cut diamonds weighing approximately 1.20 carats, size K

R22 000 - 24 000

208

Smoky quartz and gold ring, 1970s

centrally collet-set with an oval faceted-cut smoky quartz weighing approximately 12.00 carats, to a triple-step bezel accented with engraving and bifurcated shoulders, size M½

R5 000 - 7 000

209

Diamond pendant

claw-set with a natural fancy vivid yellow cut-cornered rectangular modified brilliant-cut diamond weighing 1.00 carat, to a bale, length approximately 10mm

Accompanied by report number 2135342336 from Gemological Institute of America, stating that the diamond weighing 1.00 carat is natural, fancy vivid yellow, even in colour and VS¹ in clarity

R40 000 - 42 000

210

Pair of diamond earrings

each claw-set with a natural fancy intense orange-yellow round brilliant-cut diamond, weighing 1.03 carats and 1.10 carats, post and butterfly fittings, length approximately 15mm (2)

Accompanied by report 1206774075 from Gemological Institute of America, stating that the diamond weighing 1.03 carats is natural fancy intense orange-yellow even in colour

Accompanied by report 1206775962 from Gemological Institute of America, stating that the diamond weighing 1.10 carats is natural fancy intense orange-yellow even in colour

R65 000 - 70 000

211



211
**Diamond and platinum
 eternity ring**

claw-set with baguette-cut diamonds weighing approximately 2.50 carats, the shank fitted with a size adjuster, size N½

R20 000 - 22 000

212



212
Diamond ring

designed as a series of articulated brick links embellished to the front and sides with round brilliant-cut diamonds weighing approximately 1.80-2.00 carats, size N½

R25 000 - 30 000

215

Diamond-set bangle

hinged, pavé-set to the front with round brilliant-cut diamonds weighing approximately 0.85 carat, inner diameter approximately 60mm

R12 000 - 15 000

215



213



213
**Aquamarine and diamond
 dress ring**

claw-set with a rectangular step-cut aquamarine weighing approximately 15.00 carats, the shoulders claw-set with two tapered baguette-cut diamonds, size L

R25 000 - 30 000

216

**Gentleman's stainless steel
 Breitling Chronomètre
 Automatic wristwatch,
 circa 2005**

automatic chronomètre movement, reference number A42362, the cream dial applied with a polished luminous 12 o'clock baton hour marker, outer 1/5th second, base and tachymetre markers, bi-directional inner slide rule scale, date aperture between 4 and 5, subsidiary dials for seconds, 30 minute and 10 hour recording, polished pointed baton hands with luminous inserts, centre chronograph hand, screw down back, crown flanked by twin pushers, on a leather strap, with Breitling folding clasp, diameter of bezel approximately 42mm, with Breitling box and soft cloth

R30 000 - 40 000

216



214



214
**Pair of diamond
 hoop earrings**

the front and inner border of each hinged hoop pavé-set with lines of black and white brilliant-cut diamonds weighing approximately 3.86 carats, to post fittings, length approximately 35mm (2)

R15 000 - 18 000



217

**217
Cartier silver and enamel
evening bag, .925 sterling**

textured rectangular, with engraved
blue enamel clasp, the interior fitted
with grey cloth, *stamped Cartier, ITALY,*
.925 STERLING, 300g all in

R10 000 - 12 000

**218
A Judith Leiber multi-
coloured crystal clutch
evening bag, late 20th
century**

with gold hardware, gold chain
shoulder strap, interior with gold
leather, fitted with a swivel mirror
and suede coin purse, *inner mount*
engraved Judith Leiber, measurements
approximate 115mm x 155mm x 45mm

R12 000 - 15 000

218



219

**A George II silver dish,
Edward Wakelin, London, 1748**

oval with wavy gadrooned rim, the border engraved with a crest, *the reverse engraved No. 8, scratch weights 38=3, 39,8cm wide, 1145g*

R12 000 - 15 000



220

**A pair of cast George II silver
candlesticks, John Cafe, London,
1751**

each on a shaped circular spreading base, chased with scrolls, fluting and quilting, rising to a knopped baluster stem with conforming decoration and spool-form socket with removable quilted nozzles, the bases engraved with initials, *splits, dents, holes, 25cm high, 1675g all in (2)*

R25 000 - 30 000

PROVENANCE

Purchased from Templar's Antiques (Pty) Ltd, Benmore Gardens, Sandton, 16 February 1979.



221

**A pair of George III silver Corinthian
candlesticks, Emick Romer, London,
1762**

each raised on a square base moulded with grapes and vines amongst scrolls, rising to a fluted column, with leaf socket, detachable nozzle with stiff-leaf moulding, *scratch weights 64=17, dents, repair, loaded, 38cm high (2)*

R25 000 - 30 000

222

**A George III silver teapot,
The Batemans, London, 1794**

the hinged cover engraved with bright-cut decoration surmounted by an oval ivory finial, the side applied with a *later* wooden scroll handle, the body and shoulders with further bright-cut borders, the front engraved with a navette-shaped cartouche and the reverse with a vacant cartouche with initials, on an oval-shaped reeded base, *dents, 15cm high, 385g*; and a George III silver stand, Peter & Ann Bateman, London, 1791, navette-shaped, engraved with bright-cut foliate decoration, with reeded rim, raised on four fluted outswept feet, *dent, repair, 18,8cm wide, 145g (2)*

R15 000 - 20 000

*This lot is not suitable for export



223

A George III silver assembled coffee set, Peter & Ann Bateman, London, 1794-1799

the urn-shaped coffee pot with bands of bright-cut decoration interspersed with rondels of flowerheads and sprays of flowers, engraved with initials below, the hinged cover surmounted by a ball finial, the side applied with a *later* wooden handle terminating in an acanthus leaf, on a spreading stepped circular foot, reeded bands throughout, *32,5cm high*; the stand similarly engraved, raised on three fluted outswept paw feet, *15cm diameter*; the sugar basket navette-shaped, similarly engraved, the sides applied with a reeded swing-handle, on a conforming spreading oval foot, *16,5cm wide*; a George III silver milk jug, maker's mark rubbed, London, 1799, the oval body similarly engraved, the side applied with a reeded handle, *11,4cm high, 165g*; and two pairs of George III silver sugar tongs, Peter, Ann & William Bateman, London, 1803, *14,5cm long, scratch weights 4-23-18 and appears to be 59 4, marks worn, minor dents and restorations, 1335g all in (6)*

R35 000 - 40 000

PROVENANCE

Purchased from Templar's (Pty) Ltd, Benmore Gardens, Sandton, 28 June 1978.

224

A George III silver coffee pot, Robert Hennell I & David Hennell II, London, 1800

urn-shaped, raised on a spreading circular reeded footrim, the body engraved with a crest, with *later* harp-shaped wooden handle, the detachable cover with turned wooden finial, *23,5cm high, 815g*

R10 000 - 12 000

225

Four George III silver tureens and covers, Rebecca Emes & Edward Barnard I, London, 1809

each rectangular with rounded corners and gadrooned border, engraved with an armorial, the sides applied with scroll handles, raised on a conforming spreading foot, the cover engraved with a crest and surmounted by a stylised branch handle, *engraved 1-4, 14,8cm high, 2580g all in (4)*

R25 000 - 30 000

226

A George III silver tureen and cover, Benjamin Smith II & James Smith III, London, 1810

rectangular, with moulded lobed rim, the body engraved with an armorial, the sides applied with handles, the domed cover with foliate and c-scroll handle, raised on four leaf-headed paw feet, *41cm wide over handles, 4360g all in*

R20 000 - 25 000





227 part lot

227

A George III silver 'Fiddle' pattern part flatware service, Thomas Wilkes Barker, London, 1812

comprising: nine dinner spoons, a soup ladle, twelve dinner forks, a basting spoon, nine dessert spoons, nine teaspoons, two salt spoons, each terminal engraved with an armorial, 2370g all in; twelve George III silver 'Fiddle' pattern dessert forks and a sugar sifter, Richard Crossley, London, 1812-1813, each terminal engraved with a crest, 595g all in; a pair of George III silver 'Fiddle' pattern sauce ladles, Robert

Rutland, London, 1809, 115g all in; nine Elizabeth II silver 'Rattail' pattern dinner and dessert knives, Francis Howard Ltd, Sheffield, 1973; three George III silver-gilt salts, Rebecca Emes & Edward Barnard I, London, 1812, each rectangular, with moulded gadrooned rim, the body engraved with an armorial, raised on four shell feet, gilt interior, 225g all in; and an associated mahogany canteen, 19th century, the hinged rectangular top enclosing a removable baize-lined compartment and interior, the sides applied with carrying handles, with Garrard paper label, 10,4cm high, 47cm wide, 32,5cm deep (80)

R30 000 - 35 000



228

228

A George III silver two-handled tray, Robert Sibley I, London, 1814

oval with gadrooned rim and moulded border, the sides applied with reeded and leaf-capped handles, 63,2cm wide over handles, 3055g

R30 000 - 35 000



229

229

A pair of George IV silver entrée dishes and covers, maker's initials RG, Sheffield, 1820

each rectangular with moulded flowerhead and foliate borders, the cover similarly moulded and engraved with detachable handle, minor dents, surface scratches, 3245g all in (2)

R40 000 - 50 000

230

A George IV silver two-handled tureen and cover, JE Terrey & Co, London, 1823

oval with moulded gadrooned rim, the body engraved with an armorial, the sides applied with reeded and acanthus-leaf handles, raised on four paw feet, the cover surmounted by a leaf handle, *minor oxidisation, splits, dents, 22cm wide over handles, 785g*

R7 000 - 9 000



230

231

A George IV and William IV silver assembled 'Shell and Thread' pattern flatware service, William Eaton, London, 1825-1837

comprising: twelve dinner spoons, twelve dinner forks, twelve dessert forks, twelve dessert spoons, twelve teaspoons, *2430g all in*; and twenty-four Elizabeth II silver dinner and bread knives, Sterling Silverware Ltd, Sheffield, 1970 (84)

R40 000 - 45 000



231 part lot

232

A George IV silver salver, possibly William Brown, London, 1827

circular with moulded foliate border, the centre engraved with flowerheads and scrolling foliage, raised on three bracket feet, *split, 24cm diameter, 490g*

R2 500 - 3 000



232

233

A pair of George IV silver-gilt salts, Robert Sharp, London, 1828

cauldron-shaped body, each with moulded gadrooned rim, the bulbous body engraved with a crest, raised on three claw-and-ball feet, gilt interior, *dents, one engraved 'G.Y' to the reverse, 8,3cm diameter, 420g all in*; another pair, Thomas Heming, London, 1821, similar, *410g all in*; and four George IV silver-gilt 'Old English Thread' pattern salt spoons, William Hill, London, 1821, each terminal engraved with the initial 'R', *70g all in* (8)

R4 000 - 6 000



233



234

**A George IV silver two-handled wine cooler, Paul Storr,
London, 1829**

urn-shaped, the lobed body moulded and engraved with alternating repoussé panels of flowerheads, c-scrolls, fruit and leaves, grapes and vines, centred by an armorial to one side and two crests to the other, the sides applied with vine-form handles moulded with fruiting vines supported on a Bacchanalian mask, raised on a lobed pedestal base, the rim similarly moulded, gilt interior, *underside engraved with scratch weight Oz 165*"10, 46,8cm wide over handles, 3620g

R80 000 - 100 000

235

A Victorian silver 'Hanoverian' pattern flatware service, Chawner & Co, London, 1851-1855

comprising: twelve dinner forks, twelve dinner spoons, six egg spoons, two fish slices, a fish serving fork, a soup ladle, a pair of sauce ladles, a pair of basting spoons, twenty-four dessert forks, ten dessert spoons, twelve teaspoons, 4248g all in; a Victorian silver 'Old English' pattern fish server, London, 1851, 125g; twelve Edward VII silver 'Old English' pattern fish knives and forks, Atkin Brothers, Sheffield, 1906-1907, 1555g all in; and twelve Elizabeth II silver 'Sandringham' pattern dinner and bread knives, Terry Shaverin, .925 sterling, Sheffield, 1980 (133)

R50 000 - 60 000



235 part lot

236

A Victorian silver 'Fiddle, Thread and Shell' pattern flatware service, Emmanuel Brothers, London, 1858

comprising: six dinner spoons, six dinner forks, six dessert forks, six dessert spoons, six teaspoons, each terminal engraved with the letter 'W'; 2025g all in; and a pair of Victorian silver 'Reeded King's Husk' pattern basting spoons, Elizabeth Eaton, London, 1854, 395g all in (32)

R15 000 - 20 000



236 part lot

237

A Victorian silver tray, Martin, Hall & Co, London, 1875, retailed by Worldley & Co, Liverpool

oval, with beaded rim, the centre bright-cut with garlands of flowerheads, inscribed 'THIS TRAY TOGETHER WITH A SILVER TEA AND COFFEE SERVICE AND KETTLE were presented to the Revd L.W. Diggle M.A., incumbent at St Matthew and St James Church Mossley Hill near Liverpool, and Rural Dean of Childmhall, ON THE OCCASION OF HIS MARRIAGE WITH MISS EDITH MOSS, XXIII APRIL MDCCCLXXXIV, by Members of the Congregation and Parishioners as a mark of their sincere esteem and regard'; the sides applied with reeded and acanthus-leaf handles, raised on four bun feet, engraved 9726, with retailer's name to the reverse, 73,3cm wide over handles, 4120g

R25 000 - 30 000



237



238

238

Five Mappin & Webb 'Prince's' plate domes, 20th century

in sizes, each with detachable handle, moulded with c-scrolls, scrolling foliage, swags of flowerheads, ribbon and fish scales, stamped, registration numbers, the largest 46,2cm wide (5)

R10 000 - 12 000



239

239

An Edwardian silver-plated revolving breakfast dish

oval, the hinged domed cover engraved with sprays of foliage, enclosing a detachable beaded dish, the sides applied with stylised leaf handles, raised on four fluted legs with paw feet, 38,3cm wide over handles

R1 500 - 2 000

240

An Edward VII silver bowl, maker's mark worn, London, 1908

of navette shape, with moulded wavy rim, the sides with shield-shaped stylised handles, raised on four stylised claw feet, numbered 12051, dent, 40cm wide over handles, 1610g; and a George V example, maker's mark worn, Sheffield, 1917, similar, numbered 12051, dent, 31cm wide over handles, 810g (2)

R10 000 - 15 000



240

241

An Edward VII silver four-handled bowl, maker's mark worn, possibly Jay Richard Attenborough Co Ltd, London, 1909

circular with canted sides, with wavy rim, the sides applied with four harp-shaped handles, raised on a triangular spreading foot, *minor dents and pitting, the base stamped indistinctly, 27cm wide, 1015g*

R6 000 - 8 000



241

242

A George V silver-gilt two-handled tureen, maker's marks worn, Sheffield, 1927

of navette shape with moulded rim, gilt interior, the sides applied with leaf-capped handles, raised on a spreading oval foot, *minor abrasion to one handle, engraved CAPITAL 13932 E, 31,5cm wide over handles, 725g*

R6 000 - 8 000



242

243

A George V silver four-piece tea service, Sheffield, Roberts & Belk Ltd, 1928

comprising: a hot water pot, a teapot, a two-handled sugar bowl and a milk jug, each with canted corners, the body engraved with two bands of foliate and flowerhead decoration, the hot water jug and teapot applied with ivory scroll handles, the hinged domed cover surmounted by a pineapple finial, the milk jug and two-handled sugar bowl each with harp-shaped silver handles, *engraved 9091 to the base, the hot water jug with detachable muslin strainer, the hot water jug 19,5cm high, 1815g all in (4)*

R12 000 - 15 000



243

*This lot is not suitable for export

244

A pair of George V silver Corinthian candlesticks, maker's mark worn, Birmingham, 1933

each raised on a square stepped and gadrooned base, rising to a fluted column, with beaded nozzles, each base engraved with the inscription 'TO HARRY AND LIBBY FROM MOTHER 23.6.37'; repairs, loaded, 30,5cm high (2)

R12 000 - 15 000



244

245

An Elizabeth II silver novelty cigarette case, Joseph Gloster Ltd, Birmingham, 1953

rectangular with canted corners, the engine-turned body with a rectangular cartouche engraved with initials, enclosed by chased foliate decoration, with hinged cover, the opposing side with hinged flap inscribed 'Penny from Ted, 29.4.55'; stamped 'MADE IN ENGLAND'; with gilt interior, cased, 7,5cm high, 5,1cm wide, 2cm deep, 85g

R4 000 - 6 000



245

246

An Elizabeth II silver 'King's' pattern flatware service, EP & Co, Sheffield, 1963

comprising: twelve soup spoons, twelve dinner forks, twelve dinner knives, twelve dessert knives, twelve dessert spoons, twelve dessert forks, six fruit knives, six fruit forks and a pair of butter knives, 3310g all in; six electroplated fish knives and forks, Sheffield, 20th century; and a mahogany canteen, mid 20th century, the hinged moulded rectangular top enclosing a fitted baize-lined interior with a fitted frieze drawer below, the front with brass carrying handle, 17cm high, 47,5cm wide, 34,5cm deep (99)

R20 000 - 25 000



246 part lot

247

An Elizabeth II silver 'Dubarry' pattern flatware service, Cooper Brothers & Sons Ltd, Sheffield, 1964-1967

comprising: twelve dinner knives, twelve dinner forks, eighteen dinner spoons, a carving knife, a carving steel, a carving fork, a soup ladle, a pair of sauce ladles, twelve fish knives, twelve fish forks, a pair of fish servers, twelve bread knives, twelve dessert forks, twelve dessert spoons, twelve teaspoons, eleven coffee spoons, a salt spoon, each terminal engraved with the letters 'L.G.'; 6030g all in; an electroplated salt spoon; and an oak canteen, mid 20th century, the hinged rectangular moulded top enclosing a baize-lined fitted interior with two graduated drawers below, raised on a moulded plinth base, distress to top, 28,5cm high, 48cm wide, 34cm deep (136)

R25 000 - 30 000



247 part lot



248

**A set of twelve Elizabeth II silver dinner
plates, SA Ld, London, 1964, .925 sterling**

*circular, each with wavy moulded gadrooned border,
28,8cm diameter, 11005g all in (12)*

R70 000 - 80 000



249

**249
A George III mahogany
tilt-top pie-crust table**

with moulded wavy rim, raised on a part fluted tapering column, on three acanthus-carved cabriole legs, on paw-and-ball feet, with later bearers and bracing, lacking castors, 70cm high, 74cm diameter

R9 000 - 12 000



250

**250
A George III mahogany
tea stand**

the square top with blind key-fret gallery, the blind 'Chinese' fretwork frieze with a slide, raised on square key-fret legs with pierced foliate spandrels, on brass castors, restorations, 66cm high, 31cm square

R6 000 - 8 000

**251
A George III style carved
mahogany silver table,
19th century**

the rectangular top with a pierced fretwork gallery, the blind 'Chinese' fretwork frieze with ribbon-carved beading, on four pierced fretwork square-section legs, headed by carved pierced angle brackets, joined by a scrolled pierced conforming stretcher surmounted by an urn finial, on block supports with brass castors, repair, restoration, chips, retailer's plaque Frank Partridge, Works of Art, 26 King St. St. James's and New York, 77cm high, 84,5cm wide, 50,6cm deep

R10 000 - 15 000

**252
A George III mahogany
secrétaire chest of drawers**

the later reeded rectangular top above a hinged fall-front drawer, enclosing an arrangement of drawers, cubby holes, a cupboard and a gilt-tooled green leather writing surface, above three graduated drawers, on tapering lobed and bun feet, 116,5cm high, 110cm wide, 54cm deep

R10 000 - 15 000

*This lot is not suitable for export



251



252



253



254



255



256

253
A Regency rosewood sofa table

the rectangular top with rounded corners above a pair of moulded spandrels, raised on tapering lobed supports terminating in a lotus-leaf collar, on moulded bracket-shaped platforms, on turned feet, with brass castors, *some losses*, 74,5cm high, 150,5cm wide, 68cm deep

R15 000 - 20 000

*This lot is not suitable for export

254
A William IV rosewood library table

the rectangular top above a frieze drawer, raised on tapering fluted and acanthus-leaf columns, on a moulded soffit and shaped plinth support, on claw-and-scroll feet, with recessed brass castors, 73cm high, 137,5cm wide, 67cm deep

R12 000 - 15 000

*This lot is not suitable for export

255
A William IV rosewood library table

the rectangular rounded top above a pair of frieze drawers, raised on gadrooned baluster supports, on square-section legs, with brass castors joined by a stretcher, 73,2cm high, 93,7cm wide, 55,2cm deep

R8 000 - 10 000

*This lot is not suitable for export

256
A Victorian walnut sofa table, Johnstone & Jeanes, New Bond Street, London, mid 19th century

the moulded rectangular top with gilt-tooled leather inset writing surface above a pair of frieze drawers, raised on tapering columnar supports, with lotus-leaf socle, the cabriole legs headed by foliate carving with claw-and-ball feet, on brass castors, *the drawer stamped 'Johnstone & Jeanes, New Bond ST, London'*, 73cm high, 113,5cm wide, 59,5cm deep

R35 000 - 45 000

257

A Victorian oak cigar box

modelled as a sentry box with slatted sides and roof, the arched glazed front set with a watercolour of a uniformed guardsman possibly by Richard Simkin, enclosing four drawers, *in sizes*, on a plinth base, 54cm high, 23cm wide, 23cm deep

R15 000 - 20 000



257



258

258

A Victorian walnut and gilt-metal-mounted desk

the kidney-shaped top inset with a gilt-tooled brown leather writing surface above a frieze drawer, on chamfered cabriole legs with gilt-metal mounts and sabots, 74cm high, 115cm wide, 58cm deep

R8 000 - 10 000

259

An Edwardian satinwood and painted table-top vitrine

the hinged glazed trefoil top enclosing a green silk interior, the conforming frieze painted with sprays of roses on three square-section outswept legs joined by a stretcher centred by a triangular platform, *some veneer losses and overpainting*, 75cm high, 46cm wide, 42cm deep

R4 000 - 6 000



259

260

A Carter Stabler & Adams Ltd Poole Pottery stoneware 'Harpy Eagle' by Harold Stabler, 1916

realistically rendered, perched on a rocky outcrop glazed with marbled shades of green, apricot and dark brown, *firing faults to the bird's crest, chips, impressed HAROLD STABLER 1916, 65,7cm high*

R15 000 - 20 000

PROVENANCE

De Goede Hoop Estate, Noordhoek, Cape Town.



260

261

A Tiffany & Co silver 'Windham' pattern four-light centrepiece, 1947-1956, .925 sterling

the central bowl with everted rim raised on four scroll feet each headed by a nozzle, engraved *TIFFANY & Co, MAKERS, STERLING SILVER 23312 M, 41cm diameter, 1005g*

R30 000 - 40 000



261



262

A silver cast 'Root Tree & Klipspringer' candle holder, Patrick Mavros, Harare, 2000

raised on a tree root base with a standing male and recumbent female klipspringer, stylised tree stem, with detachable foliate-shaped nozzle, 22,5cm high, 1070g

R50 000 - 70 000



263

A silver cast 'Root Tree & Elephant' candle holder, Patrick Mavros, Harare, 2000

raised on a tree root base with two standing elephants, stylised tree stem, with detachable foliate-shaped nozzle, 23cm high, 1150g

R50 000 - 70 000



264

A silver cast 'Root Tree & Elephant' candle holder, Patrick Mavros, Harare, 2001

raised on a tree root base with two standing elephants, stylised tree stem, with detachable foliate-shaped nozzle, 23cm high, 1245g

R50 000 - 70 000



265

265
Two lacquered papier-mâché boxes,
Fedoskino workshop, Russia,
20th century

each oval-shaped, one painted with a portrait of a lady in traditional attire against a mother-of-pearl ground enclosed by a gilt frame, the other painted with a game of *durak* in progress, with Cyrillic inscriptions, *the larger 3,5cm high, 8,8cm wide, 10,2cm deep (2)*

R6 000 - 8 000



266

266
Seven lacquered papier-mâché
boxes, Palekh workshop, Russia,
20th century

each with either a religious or folkloric polychrome image to the cover, with Cyrillic inscriptions, *the largest 3,9cm high, 16cm wide, 10cm deep (7)*

R15 000 - 20 000



267

267
Five lacquered papier-mâché boxes,
Fedoskino workshop, Russia,
20th century

each with fairy tale or folkloric polychrome image to the cover, with Cyrillic inscriptions, *the largest 2,5cm high, 8,8cm wide, 13cm deep (5)*

R8 000 - 10 000



detail

268

A black japanned and chinoiserie decorated brass-mounted cabinet-on-stand, 19th century

in two parts, the rectangular top above a pair of lacquered doors, the sides and top decorated with birds before flowering trees, with engraved copper and brass strap work hinges and escutcheon plates, the sides with carrying handles, enclosing an arrangement of Japanese lacquered drawers, *in sizes*, *in nashiji* and *maki-e*, with landscapes, pavilions, animals and birds, raised on a pierced bracket, the *associated* giltwood stand carved with four female caryatids with their arms aloft adorned with foliate swags centring a shield-shaped cartouche carved with initials, raised on acanthus-leaf legs, on lion paw feet, joined by an x-shaped platform stretcher, *restorations*, 166cm high, 110cm wide, 68,5cm deep (2)

R50 000 - 70 000





269

An Italian walnut mother-of-pearl and bone-inlaid centre table

the rectangular top profusely inlaid with borders of flowers and scrollwork enclosing five panels of flower-filled urns, each corner inlaid with a bone and pen work engraved cartouche, the frieze similarly inlaid and centred by masks, each corner block with a crest, drop-finial below, raised on arched columnar supports, on scrolled bracket supports joined by an H-stretcher inlaid with a continuous hunting scene below eleven moon phases, *brass banding throughout*, 82cm high, 138cm wide, 71,5cm deep

R80 000 - 100 000



detail

270

**A pair of 'Sèvres' style
gilt-metal-mounted two-
handled vases and covers,
late 19th century**

each painted with a classical scene of maidens, *putti* and dolphins within a gilt scroll frame, the reverse painted with a cartouche of summer flowers against a turquoise ground, the sides applied with female mask and acanthus-leaf handles, each rim with beaded, pierced and foliate border, the domed cover with a fruit-filled urn finial, raised on an octagonal foot headed by a band of acanthus-leaf and scroll-work, *restorations, hairline cracks, some loss to the gilding and turquoise ground, 78cm high (2)*

R30 000 - 40 000



271

**A Louis XV style bronze
jardinière, 19th century**

the tapering rectangular latticework basket raised on scroll and acanthus-leaf supports, on a waisted stepped plinth base centred by a pine cone finial, *restorations, 20,5cm high, 30cm wide, 23cm deep*

R8 000 - 10 000

272

**A pair of French painted
and upholstered fauteuilles,
18th/19th century**

each with padded and closenailed back, side and arms, on curved acanthus-leaf-carved and scrolled supports, stuff-over seat, shell-carved and foliate apron, on cabriole trailing foliate legs (2)

R30 000 - 40 000

PROVENANCE

De Goede Hoop Estate, Noordhoek,
Cape Town.



273

A French Empire style mahogany and brass-bound partners' desk, 19th century

the rectangular top with re-entrant corners with a gilt-tooled green leather inset writing surface, above a central deep frieze drawer flanked by four graduated drawers, the opposing side with panelled doors each enclosing a *later* shelf, between fluted columns, panelled sides, raised on ring-turned tapering legs, restorations, some loss, 77cm high, 152cm wide, 80cm deep

R25 000 - 30 000



274

A French kingwood and gilt-metal-mounted occasional table, late 19th/early 20th century

the radiating-veneered circular top above a frieze drawer applied with Bacchanalian and Pan figures with garlands of ribbon-tied swags, on cabriole legs with leaf-and-claw sabots, 75cm high, 80,5cm diameter

R10 000 - 15 000



275

A French Empire style mahogany and gilt-metal-mounted recamier, 19th century

with padded back, seat and foot support, with swan-neck supports, the frieze centred by a pair of winged mythical beasts flanked by stars, raised on winged lion-mask restrained cabriole legs, on sabot paw feet, with two loose bolsters, repair, 70,5cm high, 89,2cm wide, 188cm long

R15 000 - 20 000





276

A Louis XV style ormolu-mounted Boulle ebonised longcase clock, circa 1860

the 24,5cm gilt dial with enamel cartouche Roman hour numerals, outer minute track, with steel hands, striking the quarter, half and full hour on a spiral gong, the backplate stamped '172 C.R', the shaped hood surmounted by the seated figure of Chronos, the baluster-shaped trunk centred by a conforming door with an ormolu lenticle below an Apollo mask, on an outswept plinth, raised on a bracket with scrolled apron centred by a further mask, on lion-paw feet, *inlaid overall with scrolling inhabited brass arabesques, the whole with scenes from the Commedia dell'Arte, 230cm high*

R60 000 - 80 000

277

A French kingwood Vernis Martin gilt-metal-mounted vitrine cabinet, late 19th century

the serpentine-shaped pediment above a conforming glazed door and sides enclosing a pair of glass shelves and a velvet-lined interior, the lower half with Vernis Martin panels painted with figures in 18th century attire before wooded landscapes, on outswept legs with gilt-metal sabots, *the back stamped '3872'*, 179cm high, 123cm wide, 52cm deep

R20 000 - 30 000



277

278

A French kingwood, gilt-metal-mounted and marble-topped meuble d'appui, late 19th century

the stepped marble top above a waisted bombé body, with heart-shaped door set with a Vernis Martin panel enclosing a silk-lined interior and a shelf, raised on outswept feet with foliate mounts, 111cm high, 50,5cm wide, 30cm deep

R8 000 - 10 000



278

279

A French kingwood-veneered and gilt-metal-mounted occasional table, late 19th century

the radiating-veneered circular top with canted corners, above a shaped frieze, raised on leaf-headed restrained cabriole legs with sabot mounts, on scroll feet, *restorations*, 75cm high, 60cm diameter

R5 000 - 7 000



279

280

A Louis XVI style marble-topped, kingwood and gilt-metal-mounted occasional table, late 19th/early 20th century

the shaped top inset with a grey-veined marble top above a frieze applied with foliate mounts, on cabriole legs with foliate sabots, united by a wavy stretcher and circular platform surmounted by a rope-twist basket frame, *minor losses*, 76cm high, 80cm diameter

R6 000 - 8 000



280

281

An Art Deco Schneider cameo and frosted two-handled glass vase

baluster, carved with a band of trailing flowerheads in shades of amethyst, blue and dark orange, the tapering neck applied with shaped carrying handles, the rim with a purple band, signed 'Charad Le Verre Francais' and stencilled 'FRANCE'; minor chips, 26cm high

R15 000 - 20 000



281

282

An Italian silver Antipodi reversible centerpiece, designed by Marco Ferreri for De Vecchi, .925 sterling, 20th century

oval, on a circular spreading base, engraved 925 DE VECCHI, 39,6cm wide, 1520g

R12 000 - 15 000



282

283

An Italian first edition P40 lounge armchair designed in 1954 by Osvaldo Borsani for Tecno, Varedo

with adjustable padded reclining back, seat and footstool, rubber arms, on tubular black painted steel legs, manufacturer's metal label and paper label

R40 000 - 50 000

EXHIBITED

The model was exhibited at the Osvaldo Borsani Retrospective exhibition, Milan Triennale Design Museum, 16.05.2018 - 16.09.2018.

LITERATURE

Charlotte & Peter Fiell (2017) *1000 CHAIRS*, Köln: TASCHEN Bibliotheca Universalis, where the later version is illustrated on page 288.



283



284

284
An Italian walnut poker table and four walnut and leather folding chairs designed by Gio Ponti for Fratelli Reguitti, 1960s

en suite, the detachable reversible top with rounded sides, and baize-lined playing surface below, the frieze fitted with brass swivel poker trays, on turned tapering legs, *manufacturer's stamp, made in Italy, 75cm high, 90cm square*; and four walnut and leather folding chairs, each with padded curved back support and seat, on chamfered legs joined by stretchers, *one leg repaired (5)*

R35 000 - 40 000



285

285
A Danish teak coffee table, 20th century

the rectangular top on square-section legs joined by square-section side supports, *stamped 'MADE IN DENMARK', 34,5cm high, 70cm wide, 46cm deep*

R4 000 - 6 000



286

286
A Danish CH445 Wingchair designed in 1960 by Hans J. Wegner for Carl Hansen & Søn

with leather back, arms and seat, raised on tubular stainless steel legs, with pad feet

R25 000 - 35 000

287

**A Danish ash and flag line
Harp chair designed in
1968 by Jørgen Høvelskov
for Christensen & Larsen
Møbelhadvaerk**

the frame carved to resemble a
stylised Viking ship's bow, strung with
flag line to form the back and seat,
restoration

R8 000 - 10 000

LITERATURE

Charlotte & Peter Fiell (2017) *1000
CHAIRS*, Köln: TASCHEN Bibliotheca
Universalis, illustrated on page 247.
Per H. Hansen & Klaus Petersen (2005)
300 danske design møbler, Lindhart
og Ringhof, Latvia, illustrated on the
front cover.



287

288

**An LC1 leather and chrome
armchair designed in 1928 by
Le Corbusier, Pierre Jeanneret
and Charlotte Perriand**

the curved hinged chrome frame
with leather back, between curved
supports, leather strap arms, leather
seat, on tubular legs joined by front
and back stretchers, on metal flat bun
feet, *repair*

R7 000 - 9 000

PROVENANCE

Purchased from Innovation,
Cape Town in the 1980s by the
current owner.



288

289-290

No Lots