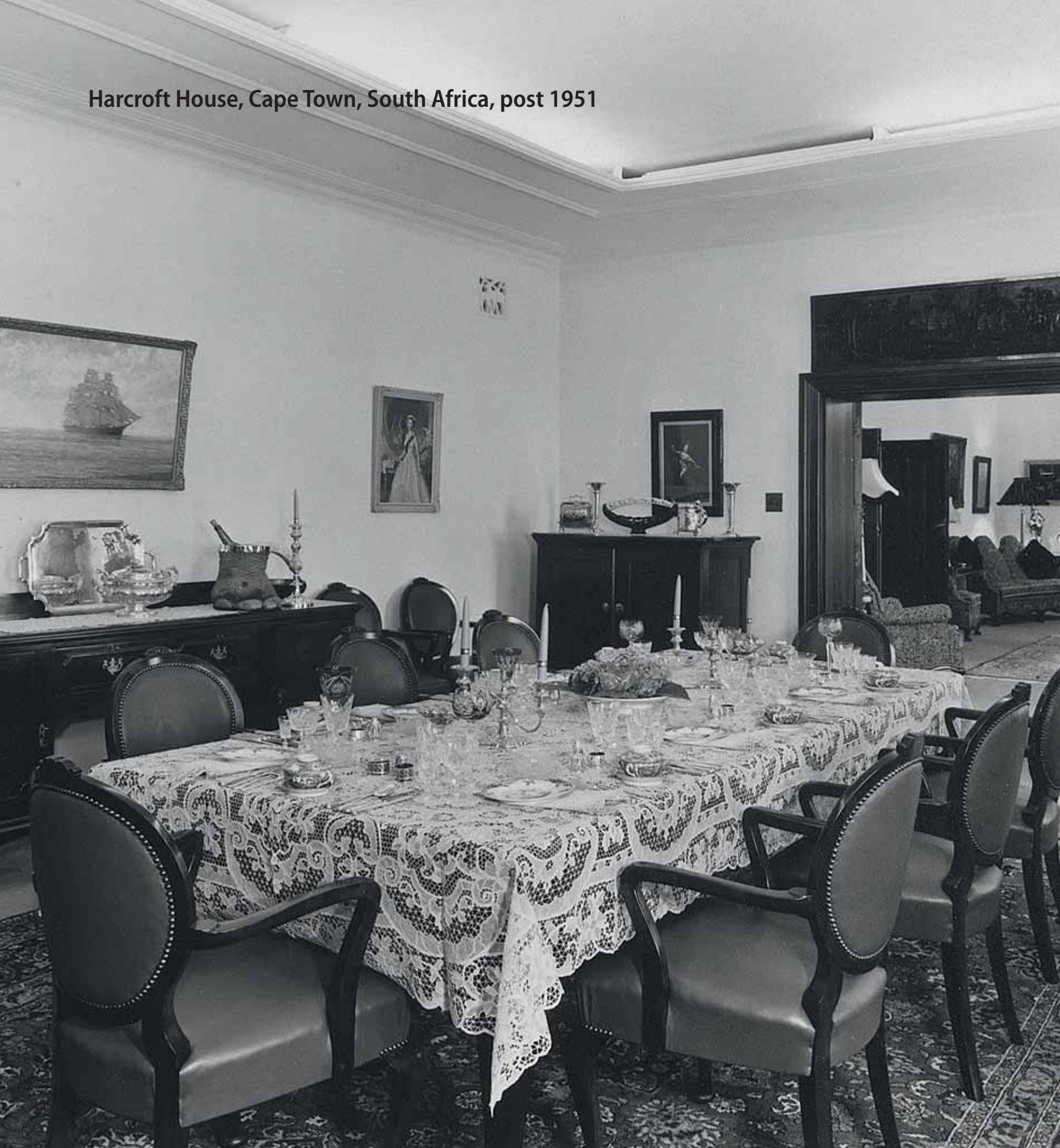


Harcroft House, Cape Town, South Africa, post 1951















Harcroft House, Constantia, Cape Town  
18 November – 4.00pm

**Kitchen and Pantry, Main Stairwell,  
Long Gallery Upstairs, Linen Passage  
Room, Linen Room, Freida Lock Dining  
Room, Dressing Room, Travel Room,  
Kyoto Room, Bombay Room, Perak Room  
Shanghai Room,**

Session 3  
Lots 377–558

Lot 489 Freida Lock, *Spring Flowers and Apples*

377

**A Lanternier & Cie Limoges part tea service, late 19th century**

each piece painted with pink roses against a white ground, the wavy beaded gilt border with pale blue shading, comprising: a teapot, a milk jug, a sugar bowl, twelve tea cups, twelve saucers, eleven tea plates and a pair of cake plates, *small chips, gilding worn, iron-red and green-printed factory marks, each cake plate 25,4cm diameter*; and a Haviland & Co Limoges part dessert service, late 19th/early 20th century, each printed with pink and green blossom, comprising: five dessert plates, a tazza, a shaped circular dish and an oval dish, *star cracks, chipping to the rims, the tazza 12,5cm high* (48)

R800 - 1 000

378

**A Bloor Derby part tea and coffee set, 1800-1840**

each decorated with purple and gilt feathers between lion borders against a cream ground, comprising: a teapot-on-stand, a milk jug, a slop bowl, a two-handled covered sugar bowl, ten tea cups, ten saucers, ten coffee cans and a pair of sandwich plates, *the teapot repaired, iron-red factory mark, the teapot on stand 15cm high* (37)

R2 000 - 3 000

379

**A Hammersley & Co green and gilt coffee set, mid 20th century**

comprising: six coffee cups, six saucers, a coffee pot, a cream jug and a sugar bowl, *gilding slightly worn, puce printed factory mark, the coffee pot 18,5cm high*; and a Royal Doulton silver-mounted flambé part coffee service, George Betjemann & Sons, London, 1919, comprising: eleven coffee cups, ten saucers, a coffee pot, a sugar bowl and a milk jug, *the spout reduced and with chips, black-printed factory mark, RD no. 471180, the coffee pot 22cm high* (39)

R800 - 1 000



377



378



379



380

380

**A Wedgwood blue and white part breakfast set, circa 1900**

each printed with a central rondel and similar border with spearhead bands, gilt rim, comprising: nine breakfast plates, nine breakfast cups, ten saucers, a pair of sandwich plates, five egg cups and a slop bowl, *brown-printed factory mark, each sandwich plate 20cm wide*; and a Staffordshire blue and white transfer-printed part breakfast set, 20th century, each printed with prunus blossom, comprising: five breakfast cups, six saucers, four coffee cans, five bowls, seven breakfast plates and a sandwich plate, *hairline cracks, chips, firing faults, printed numeral 5, the sandwich plate 25cm diameter* (64)

R1 000 - 1 500

381

**A Meissen part tea service, early 20th century**

each painted with sprays of summer flowers against a white ground, the wavy rims with cobalt blue and foliate gilt decoration, comprising: six tea cups, six saucers, five tea plates, *underglaze-blue crossed swords, impressed D193, 150, each tea plate 17,5cm diameter* (17)

R1 200 - 1 500



381





382

382

**A Paragon 'Gingham Rose' pattern part tea set, 20th century**

each transfer-printed with roses against a black ground, white and gilt highlights, comprising: ten tea cups, eleven saucers, eleven tea plates, two sandwich plates, a milk jug and a sugar bowl, *milk jug broken, gilt-printed factory mark, the tea plates 25cm wide*; and a Staffordshire part tea and coffee service, late 19th/early 20th century, each painted with a bouquet of summer flowers against a white ground, gilt highlights, wavy gilt and cream bands, comprising: eight tea cups, ten coffee cups and twelve saucers, *hairline cracks, gilding worn, iron-red printed numerals* (66)

R1 000 - 1 500

383

**A Hutschenreuther maroon and gilt part coffee set, mid 20th century**

each moulded with rondels transfer-printed with figures in eighteenth century attire against a puce ground, gilt highlights, comprising: six coffee cups, six coffee saucers, five cake plates, a sandwich plate, a coffee pot, a cream jug and a covered two-handled sugar bowl, *green- and gilt-printed factory marks, the coffee pot 21,5cm high*; and a Limoges coffee set, mid 20th century, each transfer-printed with figures in 18th century attire against a cream ground, with gilt highlights and rims, comprising: a coffee pot, a cream jug, a two-handled covered sugar bowl, six coffee cups and six saucers, *green-printed factory mark, the coffee pot 17cm high* (36)

R800 - 1 000

384

**A Paragon 'Tree of Kashmir' pattern part breakfast service, 20th century**

comprising: a teapot, a coffee pot, a hot water jug, a milk jug, a sugar bowl, six egg cups, thirteen bowls, *in sizes*, five side plates, eight breakfast plates, a covered butter dish, a pair of covered comports and stands, and an oval serving platter, *damage, repairs, black-printed factory mark, the coffee pot 22,5cm high*; and a miscellaneous collection of Maddock 'Chinese Rose' pattern dinner wares, 20th century, including: a tureen and cover, *black-printed factory mark, 23cm wide over handles* (62)

R1 500 - 2 000



383

385

**A clear and frosted cut-glass punch bowl suite, 20th century**

comprising: a punch bowl, ten cups, eight saucers, a fruit bowl and centrepiece, *later* ladle and cocktail stirrer, each decorated with frosted flowerheads and cut leaf-and-star designs, star-cut base, the fruit bowl raised on three scrolled legs, *lacking start-cut base, the punch bowl 32,5 high* (23)

R800 - 1 000



384

386

**Countess Morphy Recipes of All Nations**

Arco Publications, London, 1953 and various books of similar interest, including Cookery, Wine, Homes and Interiors (Qty)

R800 - 1 200



385

387

**A collection of Royal Winton Grimwades wares, 1950s**

various patterns, including a 'Hibiscus' pattern part breakfast-set, comprising: six tea cups, five saucers, three pedestal dishes, a pair of comports, six fruit bowls, three oval platters, three butter dishes, a trefoil dish, a covered sugar bowl and another bowl, two covered butter dishes, *in sizes*, a toast rack and a milk jug, *chips, staining, lacking handles and finials, printed factory mark, the largest pedestal dish 22,5cm wide*; part-set of 'Petunia' pattern wares, comprising: a pedestal dish, two shaped dishes, *in sizes*, a covered butter dish, two jugs, *in sizes, chips, staining, lacking handles and finials, printed factory mark, the dish 26,5cm wide*; and a miscellaneous collection of Carltonware, Melbaware and Clarice Cliff wares, *chips, staining, lacking handles and finials* (Qty)

R1 500 - 2 000



387

388

**A Coalport blue, white and gilt part fruit and coffee set, circa 1920**

comprising: ten coffee cups, twelve saucers, twelve dessert plates, a pair of two-handled square dishes, a pair of two-handled oval dishes, *hairline cracks, chips, green-printed factory mark, each oval dish 27cm wide over handles*; and a Coalport 'Revelry' pattern part coffee and tea set, mid 20th century, comprising: eight coffee cans, eight coffee saucers, three tea cups, nine saucers and eleven tea plates, *chips, fading, gilt rims worn, blue-printed factory mark, each tea plate 17,5cm diameter* (77)

R1 000 - 1 500



388

389

**A Royal Crown Derby coffee set, first quarter 20th century**

each painted with bands of iron-red, royal blue and gilt foliage, comprising: twelve coffee cans and twelve saucers, *printed factory mark*; three Davenport Longport Staffordshire 'Imari' pattern plates, 1870-1886, each with wavy rims, *iron-red printed factory mark, each 23,5cm diameter*; and a set of six Spode botanical coffee cans and saucers, mid 20th century, each painted with a botanical plant against a white ground with gilt rims, *hairline cracks, one saucer repaired* (38)

R1 000 - 1 200



389

390

**A Staffordshire royal blue, cream and gilt part tea and coffee set, 19th century**

each decorated with gilt flowers against a cream ground enclosed by blue and gilt borders, comprising: a teapot, a covered two-handled sugar bowl, a milk jug, a slop bowl, six tea cups, five saucers, six coffee cups and eight saucers, *staining, chips and cracks, the teapot 20cm high* (29)

R800 - 1 000



390



391



392



393



394

391

### A Staffordshire part dinner service, 19th century

each centre painted with peonies against a white ground enclosed by a pale blue border moulded in relief with sprigs of white flowers, wavy gilt rim, comprising: thirty-six dinner plates, twenty-four dessert plates, *iron-red painted numerals 788, each dinner plate 25,4 diameter*; and a Limoges part fruit set, late 19th century, each decorated with sprays of flowers in iron-red and gilt against a white ground enclosed by a royal blue border with gilt foliate highlights, wavy gilt rim, comprising: twelve dessert plates and a pair of tazzas, *in sizes, some chips, green-printed factory mark, CFH/GDM, the taller tazza 12cm high (74)*

R2 000 - 4 000

392

### A group of Chinese famille-rose part coffee and dinner services, 20th century

each decorated with panels of courtiers at various pursuits, enclosed by foliate and fruit rondels and borders, comprising: a condiment set, cased, sixteen coffee cups, twenty saucers, twenty-four two-handled consommé dishes and covers, twenty-six saucers and thirty-two spoons, *repairs, some dishes glued, chips, lacquer box with repairs, distress, iron-red MADE IN CHINA, the condiment set 30cm diameter*; a Chinese condiment set, in a lacquered lazy susan case, a pair of two-handled soup cups and covers, *iron-red 'MADE IN CHINA', the lazy susan 30cm diameter*; and a miscellaneous group of Chinese wares including six dishes, fourteen soya sauce bowls, seven further bowls and a ladle, *iron-red 'MADE IN CHINA, FABRICADO EM MACAU', each dish 10cm diameter (150)*

R1 000 - 1 500

393

### A miscellaneous group of Royal Worcester tureens and soufflé bowls, 20th century

each printed with beetles, butterflies and strawberries, *chips, gilding worn, printed factory mark, one tureen 24cm wide over handles*; and various other serving dishes and tureens, *chips, lacking cover, gilding worn, the Rosenthal yellow tureen repaired (Qty)*

R400 - 600

394

### A Beech & Hancock Staffordshire transfer-printed 'Pekin' pattern part dinner service, late 19th century

each transfer-printed with chinoiserie scenes enclosed by circular and foliate borders, iron-red rims, comprising: seventeen dinner plates, eighteen soup plates, twenty-two side plates, eighteen dessert plates, four vegetable tureens and covers, a two-handled soup tureen, stand and cover, a pair of sauce boats, stands and covers, five oval serving dishes, *in sizes*, a meat platter and strainer, a pair of small strainers, and a pair of bowls, formerly ladles, *some staining, chips and wear, green-printed factory mark, purple painted numerals, the largest platter 50cm wide (92)*

R3 000 - 5 000



395

**A burl walnut-veneered two-handed tray, late 19th century**

the veneered dodecagon shaped tray with semi-circular metal gallery, 64,4cm wide over handles; four Chinese black lacquer trays, 20th century, *in sizes*, each decorated with a fierce dragon, the largest 35,5cm wide; and another five miscellaneous trays, various sizes (8)

R1 000 - 1 500



396

396

**A silver-plated two-handed tray, 19th century**

oval, the centre engraved with an armorial enclosed by scrolling foliage, cell-diaper panels and flowerheads, with a scalloped moulded rim interspersed with flowerheads and acanthus leaves, the sides applied with double c-scroll and shell handles, 77,5cm wide over handles

R1 500 - 2 000

397

**A set of twelve Edward VII silver reed and ribbon pattern fruit forks, William Hutton & Sons, Sheffield, 1905**

cased; a set of six George VI silver handled tea knives, Barker Brothers Silver Ltd, Sheffield, 1950, cased, retailed by H Sena Ltd Jewellers Singapore Penang and Bangkok; a set of twenty-four Walker & Hall mother-of-pearl and silver-plated fruit knives and forks, cased, manufacturer's label Walker & Hall, Sheffield; a set of six George VI mother-of-pearl and silver tea knives, William Suckling Ltd, Sheffield, 1945, cased, retailed BP de Silva Ltd, Penang; a set of seven mother-of-pearl and silver-plated fruit knives and eight forks; and a set of six Clements stainless steel and mother-of-pearl tea knives, cased (69)

R2 000 - 3 000



397

398

**A miscellaneous collection of electroplated wares, 20th century**

including: teapot stands, a burner, a teapot, a hot water jug, a crumb scoop and tray, a fish set, egg cups, and miscellaneous teaspoons and tea strainers (Qty)

R300 - 400



398

399

**A miscellaneous group of silver salts, mustard and pepper pots, various makers, London & Birmingham, 1907-1947**

comprising: nine mustard pots, eight pepper pots, nine salts, some with blue glass liners, 745g all in; seven electroplated mustard pots, two electroplated pepper pots and a salt cellar, four foreign electroplated salts, some with blue glass liners; four porcelain and silver-mounted pepper pots, each 6cm high; and a miscellaneous group of sixteen blue glass liners (44)

R600 - 800



399



400

**An Edward VII silver pin tray, Henry Matthews, Birmingham, 1902**

rectangular, embossed with summer flowers and tendrils, the centre later engraved, 305g, 24,5cm wide; a late Victorian silver pomander, maker's initials G M, London, 1894, 95g, 9,5cm high; a pair of George V silver-mounted glass scent bottles, Birmingham, 1926, each with silver collar, tapering cut-glass bodies with associated stoppers, damaged, 18,5cm high; a Chinese glass cased silver-mounted scent bottle, late 19th/early 20th century, lacking stopper, 12cm high; a Chinese glass cased silver-mounted scent bottle, late 19th/early 20th century, 11,8cm high; a George V silver-mounted glass tot measure, William Suckling Ltd, Birmingham, 1933, 12cm high; a George V silver Aladdin's lamp, Elkington & Co, Birmingham, 1928, with serpent-shaped handle, the detachable cover surmounted by a flame finial, loaded, 9cm high; and a pair of silver George V butter dish rings, Adie Brothers, Birmingham, 1924, each with shell and reeded rim, lacking glass liners, 12cm diameter, 125g (10)

**R600 - 800**

401

**A pair of German silver dishes, 800 standard, Eugen Marcus, 20th century**

each with moulded wavy rim and reeded border, 36,5cm diameter, 2265g all in; and a German silver dish, 20th century, 21cm diameter, 185g (3)

**R8 000 - 10 000**

402

**A silver-plated hot water jug, Walker & Hall, 20th century**

the tapering body with engraved panels, with hinged cover, 19,5cm high; a late Victorian silver-plated teapot, the bulbous body engraved with initials enclosed by a foliate wreath, damaged harp-shaped handle, 16cm high; an electroplated pierced tea strainer; a silver-plated two-handled bowl and milk jug, 20th century, each with reeded rim and handle, the sugar bowl 15,5cm wide over handles; an electroplated cake basket, late 19th century, with swing handle, the oval body engraved with flowers and foliage within beaded borders, 29,5cm long; an electroplated cake slice; a pair of electroplated toast racks, 20th century, each with four divisions, 7cm high; a Kingsway plated dish, circular, with gadrooned rim, 16cm diameter; an electroplated salver, 20th century, circular, with acanthus-leaf and flowerhead rim, the centre similarly engraved, 20cm diameter; an electroplated Walker & Hall dish, oval, with reeded and ribbon rim, 30,5cm diameter; an electroplated four-piece bachelor's tea set, Spilhaus, 20th century, comprising: a teapot, a hot water jug, a two-handled sugar bowl and milk jug, the teapot 11cm high; and an P. G. & Co Ltd plated burner, 20th century, the cylindrical body applied with a pair of carrying-handles, 21,5cm high (17)

**R800 - 1 000**

403

**A miscellaneous group of electroplate and silver dressing table wares**

including: a silver hand mirror, marks worn; a George V silver-mounted glass box, James Deakin & Sons, Chester, 1924; a George V silver-mounted nail buffer, G & C Ltd, Birmingham, 1937; two silver clothes brushes, Charles S Green & Co Ltd, Birmingham, 1917; and another, Birmingham, 1916; an Edward VII silver-mounted powder jar, makers initials WHS, London, 1903; a 'tortoiseshell' and a sterling silver-mounted comb; another, Birmingham, 1933; an electroplated hairbrush; and two electroplated trays, in sizes, the hand mirror 27cm long (12)

**R400 - 600**



400



401



402



403





404

**404**  
**A pair of silvered pewter Carrol Boyes figural candlesticks, modern**

each nude supporting a sconce above her head, raised on a circular base, *impressed 'C. Boyes'*, 13,5cm high (2)

R200 - 300



405

**405**  
**A miscellaneous group of enamel and silver-mounted dressing table wares, Birmingham/Sheffield, 1924-1934**

comprising: a George V enamel, silver, marcasite and jade-mounted hand mirror, Adie Brothers, Birmingham, 1933, 28,5cm long; a George V pink guilloche enamel and silver-mounted glass powder bowl, Mappin & Webb, Sheffield, 1934, 7,3cm high; a George V pink guilloche enamel and silver-mounted glass bottle, Mappin & Webb, Birmingham, 1929, *damaged glass and enamel*, 9cm high; a George V pink guilloche enamel and silver-mounted cigarette case, maker's mark T & S, Birmingham, 1928, 8cm wide, 120g all in; a guilloche enamel and silver-mounted box, apparently unmarked, 7,5cm wide, 95g all in; and a George V enamel and silver-mounted box, maker's mark worn, Birmingham, 1924, dents, 5,3cm diameter, 45g all in (6)

R2 000 - 2 500



406

**406**  
**A George V five-piece enamel and silver-mounted dressing table set, maker's mark indistinct, with import marks for London, 1929, .925 sterling**

comprising: a hand mirror, a hairbrush, a pair of clothes brushes and a comb sheath, *the hand mirror 33,5cm long* (5)

R1 200 - 1 500



407

**407**  
**A George V silver-mounted mahogany blotter, maker's initials worn, Birmingham, 1919**

the rectangular engine-turned top headed by a drum-shaped knob handle, 16,5cm wide; a George V silver-mounted and ebonised blotter, Sanders & Mackenzie, Birmingham, 1924, the engine-turned rectangular top headed by a circular knob handle, 11,5cm wide; an Edwardian electroplated inkstand, the rectangular revolving cover engraved with foliage and a vacant diamond-shaped cartouche, enclosing a pair of inkwells fitted with glass ink pots, each corner headed by an urn-shaped finial, raised on baluster feet, *lacking one urn-shaped finial, stamped '26050'*, 24cm long; and a George V silver-mounted and ebonised desk blotter, Sanders & Mackenzie, Birmingham, 1924, rectangular with engine-turned sleeves, *dent*, 44cm wide (4)

R900 - 1 200



408

**408**  
**An Edward VII silver inkstand, Walker & Hall, Sheffield, 1904**

rectangular, with pen depression and detachable glass and silver-mounted capstan inkwell, raised on four scroll feet, 17,6cm long, *the stand 295g*; and another, similar, George V, Goldsmith & Company Ltd, London, 1933, raised on hoof feet, *stamped 'Goldsmiths & Silversmiths Company, 112 Regent Street, W'*, 17cm wide, *the stand 210g*; a silver letter opener, maker's initials H. H., London, 1976; an Elizabeth II silver letter opener, ETB & S, London, 1953, 60g; and a Burmese example (7)

R3 000 - 4 000



409



409

**An Edward VII silver tea caddy,  
Thomas Hayes, Birmingham, 1901**

the hinged cover embossed with a pair of dancing cherubs, enclosed by a vine, the body embossed in relief with Neptune astride his seahorse attended by putti riding on the backs of dolphins, sirens, *Salacia* in a dolphin-drawn chariot, and further mythological figures, reeded borders, gilt interiors, *9cm high, 230g*; a late Victorian silver tea caddy, William Hutton & Sons Ltd, Sheffield, 1899, the ovoid body with domed hinged cover, surmounted by an urn-shaped finial, *10cm high, 155g*; a George III silver caddy spoon, William Pugh, Birmingham, 1814, the rectangular bowl with canted corners, a stippled foliate border enclosing a rectangular vacant cartouche, foliate decorated handle engraved with the initials 'JBL', *10g*; a George V silver caddy spoon, Adie & Lovekin Ltd, Birmingham, 1924, designed as a tea leaf, with ribbed socket, *lacking handle, 10g*; a pair of George III silver sugar tongs, The Batemans, London, 1791, with bright-cut decoration enclosing a vacant cartouche, *27g*; a pair of George III silver sugar nips, London, maker's initials possibly HP, date mark indistinct, *42g*; a pair of George III 'Kings' pattern silver tongs, London 1809, William Ealey, *52g*, and two further examples, *31g all in (9)*

R7 000 - 9 000

410

**A Sheffield electroplated hot water  
jug, Viners of Sheffield, 20th century**

the body with an inscription, applied with an ebonised harp-shaped handle, the hinged cover with an ebonised finial, *23,5cm high*; a Sheffield electroplated teapot, with *associated* burner and stand, 20th century, the hinged cover with an ebonised fixed handle, the stand fitted with a burner, *dent to teapot, 26,5cm high*; a Sheffield electroplated biscuit barrel, late 19th/early 20th century, oval, the body embossed with vacant cartouches, foliate and flowerheads, *12cm high*; a George III style electroplated tea caddy, oval, with gadrooned borders, the sides applied with lion-and-ring-mask handles, *12,5cm high*; a silver-plated sugar castor, 20th century, the baluster body with pierced cover, raised on a domed circular foot, *18cm high*; a pair of electroplated sugar tongs, 20th century; an electroplated cream jug, 20th century, *8cm high*; and an electroplated tray, late 19th/early 20th century, circular engraved with foliate patterns, the rim moulded with vine leaves and branches, raised on three compressed bun feet, *46cm diameter (8)*

R1 500 - 2 000

411

**An Edward VII silver cream jug  
and sugar bowl, Levy & Salaman,  
Birmingham, 1906**

each with reeded rim and handle, *the cream jug 8,5cm high, 155g all in*; an Elizabeth II silver tea strainer, Adie Brothers Ltd, Birmingham, 1961, with pierced bowl and turned wooden handle, *16,5cm long, 30g all in*; a George VI silver tea strainer and bowl, William Suckling Ltd, Birmingham, 1939-1940, with pierced bowl, the sides applied with geometric-shaped handles, *10,5cm wide over handles, 80g all in*; a Victorian silver cream jug, George Nathan & Ridley Hayes, Chester, 1896, the baluster-shaped body embossed with sprays of flowers and ribbons, raised on three shell-headed outswept feet, *dents, splits, 8cm high, 65g*; a George V silver bon-bon basket, Joseph Gloster Ltd, Birmingham, 1926, oval, the pierced body raised on four foliate-headed triford feet, *12,5cm wide, 60g*; a George V silver hot water jug, Henry H Matthews, Birmingham, 1912, the octagonal baluster body applied with an ebonised leaf-capped scroll handle, the conforming hinged domed cover surmounted by a shaped finial, *dented, splits, 19,5cm high, 300g*; and an Edwardian electroplated gallery tray, of small proportions, oval, with wavy rim and pierced sides, raised on four bun feet, *distress to one foot, 31,5cm wide (8)*

R3 000 - 4 000

412

**A pair of Victorian silver 'King's'  
pattern grape scissors, William  
Summers, London, 1863**

*115g all in*; a pair of close-plated 'King's' pattern grape scissors, Sheffield, 19th century, *plating worn*; a pair of George IV silver 'King's' pattern asparagus tongs, London, 1828, with pierced blades, the handle engraved with a crest, *245g*; a pair of George VI silver 'King's' pattern sugar tongs, Cooper Brothers & Sons Ltd, Sheffield, 1948, *100g*; a pair of silver-plated serving spoons, maker's mark CBS, late 19th century; a William IV silver 'King's' pattern butter knife, George Unite, Birmingham, 1838, the handle engraved with initial 'B', *40g*; five further butter knives, various makers and dates, *65g all in*; a pair of Victorian silver 'Fiddle' pattern spoons, John Todd, Glasgow, 1860, each with engraved terminals, *30g all in*; six further teaspoons, various makers and dates, *110g all in*; and three silver-plated meat skewers, The Barnards, mid 19th century (23)

R4 000 - 6 000



410



411



412



413

**An electroplated asparagus dish, stand, sauceboat and associated tongs, 20th century**

*the dish 26cm wide; a Welbeck plated asparagus dish, stand and associated tongs, 20th century, the dish 28cm wide; an Alpacca plated platter, 20th century, circular, with reeded rim, 25,5cm diameter; a Walker & Hall plated dish, circular, with reeded rim, 25cm diameter; a WMF silver-plated dish, oval, with wavy moulded border, 36cm wide; and a pair of Alpacca silver-plated dishes, oval, with moulded rim, 21,5cm wide (12)*

**R800 - 1 000**

414

**A George V silver two-handled sugar bowl and milk jug, James Deakin & Sons, Sheffield, 1931**

*each baluster body, raised on a stepped circular spreading foot, applied with moulded handles, dents, the sugar bowl 14cm wide over handles, 240g all in; a George V silver cream jug, Mappin & Webb, Sheffield, 1933, the ovoid body raised on a stepped spreading circular foot, the side applied with a harp-shaped handle, base stamped 'MAPPIN & WEBB LTD, SHEFFIELD & LONDON', dents, 10,5cm high, 135g; a late Victorian silver hot water jug, Atkin Brothers, Sheffield, 1899, the tapering ovoid body with inverted sides, engraved with foliate panels and initials, on an oval-shaped base, the side applied with a ribbed handle, the hinged domed cover surmounted by a foliate finial, stamped 'RD No 251095', 21cm high, 495g; a George V silver pierced pedestal dish, E S Barnsley & Co, Birmingham, 1911, the wavy pierced frame supported on an upturned baluster column, on a domed spreading circular foot, stamped '542633', 11,5cm high, 225g; an Edward VII silver dish, John Henry Wyn, Birmingham, 1908, the oval pierced body embossed with a foliate rim, 23cm wide, 55g; a George V silver basket, William Adams Ltd, Birmingham, 1928, the pierced shaped body with a wavy rim, oxidisation, 10,4cm diameter, 60g; a George VI silver tea strainer and bowl, E Silver & Co, Sheffield, 1945, with leaf-shaped handle, repaired, 11,5cm wide, 90g all in; and an Elizabeth II silver-plated tea strainer and associated silver bowl, Adie Brothers, Birmingham, 1966, 15cm wide, 25g (9)*

**R2 000 - 2 500**



413

415

**A George III silver cruet stand, Charles Fox I, London, 1811**

*the rectangular-shaped body with egg-and-dart borders, detachable central carrying frame fitted with five later condiment glass bottles, three with electroplated covers, raised on acanthus-leaf and paw feet, one condiment bottle lacking stopper, 20cm high; a Victorian silver cruet stand, Hawksworth, Eyre & Co, Sheffield, 1869, altered, the rectangular-shaped octagonal body with foliate engraved sides and rondels, moulded rims, incorporating foliate bracket feet, minor holes, 20,5cm wide; an Edward VII silver hot water jug, William Aitken, Birmingham, 1902, baluster-shaped, with gadrooned body raised on a fluted stepped oval base, harp-shaped ebonised leaf-capped handle, the hinged cover with later ebonised finial, 21,5cm high, 325g; a George V silver teapot, William Neale & Son Ltd, Birmingham, 1935, the octagonal body applied with an ebonised composite handle, with hinged domed cover surmounted by a faceted finial, raised on a stepped circular foot, 16cm high, 575g; and a George V silver sauceboat, Adie Brothers, Birmingham, 1922, with ribbed rim, applied scroll handle, raised on an oval foot, 9cm high, 120g (10)*

**R5 000 - 7 000**

416

**A George V silver salver, maker's mark K & L, Sheffield, 1933**

*square, with incurved corners, raised on four leaf-and-scroll feet, scratches, 26,5cm square, 690g, cased*

**R2 500 - 3 000**



414



415



416



417

**A pair of George VI silver three-light candlesticks, Robert Edgar Stone, London, 1948**

each central column moulded with geometric motifs, headed by a candle scone with gadrooned collar, the applied side arms headed with further sconces with gadrooned collars, raised on a spreading circular foot, inscribed 'CHRISTMAS 1948, PRESENTED TO Mr & Mrs C.L. RYCROFT BY STAFF AND LABOUR FORCE, HARCROFT ESTATE', inscribed RE Stone to the base, 20,5cm high, 1025g all in (2)

R8 000 - 10 000

**PROVENANCE**

This lot appears in photographs of Harcroft, Perak, during Charles and Muriel Rycroft's occupancy post 1945.



418

**An Irish helmet-shaped sugar basket, Dublin, 1800**

the body embossed with flowerheads against a stippled ground, enclosing a pair of c-scroll vacant cartouches, the rim applied with reeded swing-handle, raised on a waisted column and conforming foot, fitted with a later blue glass liner, scratch weights 9-5, 14cm high, 275g; and an Edward VII silver dish, Charles Westwood & Sons, Birmingham, 1909, navette-shaped with ribbed sides, oxidisation, 22cm wide, 235g (2)

R4 000 - 6 000



419

**A pair of George III silver chambersticks, Edward Barnard I & Rebecca Emes, London, 1818-1820**

each tray fitted with an urn-shaped candle scone, with wavy gadrooned border, the side applied with a shell-shaped thumbpiece, detachable cone-shaped snuffer, detachable drip-pans, engraved with a crest, scratch weights 32"12 and 32"2, lacking wick trimmers, 9,5cm high, 1015g all in (2)

R8 000 - 10 000



420

**An Irish three-piece bachelor's tea set, John Smith, Dublin, 1882-1885**

comprising: a teapot, a two-handled sugar bowl and a milk jug, the teapot's bulbous body moulded in relief with a band of scrolls enclosing a pair of vacant cartouches, above a band of stiff-leaf decoration, associated leaf-capped handle, the hinged cover with acorn finial, on a spreading circular foot, later wooden fillets, the milk jug and two-handled sugar bowl applied with snake scale handles, the teapot 14,5cm high, 695g all in (3)

R2 000 - 3 000





421

**421**  
**An Edward VII silver christening mug, William Hutton & Sons, Birmingham, 1906**

the tapering hammered body applied with a reeded handle, raised on a circular spreading foot, the foot engraved *WEC WILLIAMS. 1908*, 9,5cm high, 130g; a WMF silver-plated teaspoon, with hammered handle; and a WAS Benson silver-plated hot water jug, late 19th/early 20th century, the tapering body with hinged cover, applied with a scroll handle, *plating loss*, 23,5cm high (3)

**R2 000 - 2 500**



422

**422**  
**A pair of George V silver toast racks, Charles S Green & Co Ltd, Birmingham, 1913**

each with four divisions, surmounted by a geometric handle, 7,7cm high, 105g *all in*; a pair of George V silver toast racks, Adie Brothers Ltd, Birmingham, 1921, each with four divisions and pierced handle, 6,5cm high, 70g *all in*; two George V silver toast racks, Adie Brothers Ltd, Birmingham, 1923, each with four divisions and pierced handle, *the smaller with dents, the taller* 7cm high, 70g *all in*; and a George V silver toast rack, E Viners, Sheffield, 1931, with four divisions and pierced handle, 7,8cm high, 55g (7)

**R1 200 - 1 500**



424

**423**  
**An Edward VIII silver sugar caster, Walker & Hall, Sheffield, 1936**

in the shape of a skyscraper, with pierced rectangular detachable cover, 14,3cm high, 200g; and a George V silver sugar caster, Walker & Hall, Sheffield, 1934, the urn-shaped body with reeded girdle, raised on an octagonal foot, the detachable pierced cover with square-shaped finial, 20cm high, 245g (2)

**R3 000 - 4 000**

**424**  
**A William IV set of six silver 'Fiddle' pattern dinner spoons, John Sutter, Chester, 1837**

355g *all in*; a George V 'Old English' pattern silver soup ladle, Cooper Brothers & Sons Ltd, Sheffield, 1912, the terminal engraved with initials, 205g; a German silver 'Fiddle' pattern soup ladle, .800 standard, the terminal engraved with initials, 240g; a pair of George V silver salad servers, William Hutton & Sons, London, 1916, each with shell bowl, twist-turned handle headed by an apostle, 125g *all in*; a George III silver 'Fiddle' pattern mustard spoon, William Ealy & William Fearn, London, 1798, 10g; three silver teaspoons and a child's fork, 65g *all in* (15)

**R4 000 - 6 000**





425

425

**A pair of Regent plate tureens and covers, Goldsmiths & Silversmiths Company, 20th century**

each of circular wavy outline, the sides applied with reeded and foliate handles, the domed cover surmounted by a conforming handle, *stamped RD451002, 25cm wide over handles*; a pair of Mappin & Webb Princess plate covered vegetable dishes, 20th century, each circular with wavy border, one with fitted divisions, the other with detachable liner, the cover applied with a pair of handles, *22cm wide over handles*; an electroplated vegetable tureen and cover, 20th century, circular with moulded wavy border, the domed cover surmounted by a turned ebonised finial, *20,5cm wide*; an electroplated covered vegetable dish, 20th century, fitted with three compartments, *23cm diameter*; and an electroplated entrée dish and cover, rectangular, the cover applied with a pair of handles, *28cm long*; and two electroplated sauceboats, 20th century, each with leaf-capped scroll handle, with gadrooned and ovolu borders, *the taller 12cm high (9)*

R800 - 1 000



427

426

**Three electroplated entrée dishes and covers, 20th century**

each rectangular with rounded corners, foliate rim, *23cm long*; a Sheffield plated entrée dish and cover, Walker & Hall, 20th century, rectangular, with beaded rim, *28cm long*; and a set of twelve electroplated underplates, 20th century, circular, with gadrooned borders, *28cm diameter (16)*

R4 000 - 6 000



426

427

**A pair of electroplate entrée dishes and covers, 20th century**

each rectangular, *28cm long*; an electroplated entrée dish and cover, 20th century, shaped oval, *35cm long*; an oval entrée dish and cover, 20th century, each with beaded and gadrooned rim, *30cm long*; and three oval electroplated serving dishes, 20th century, *in sizes*, with gadrooned borders, *the largest 51cm long (7)*

R1 500 - 2 000



428

428

**A set of five Martin Hall & Company Limited electroplated coupes, 20th century**

and a bowl-on-stand, *en suite*, each *8cm high*; a set of four electroplated coffee percolators and six demitasse holders, *the percolator 17cm high*; a pair of electroplated rectangular dishes, *in sizes, the largest 42cm wide*; an electroplated coffee pot, 20th century, with ebonised handle, *22cm high*; and a WMF electroplated covered canister, 20th century, *10cm high (20)*

R800 - 1 000





MAIN STAIRWELL





429

429

**Leberecht Lortet**

FRENCH 1826-1901

***Paysage de Montagne***

signed

oil on canvas

90 by 133,5cm; 125,5cm by 169,5cm

by 8cm including frame

R30 000 - 50 000

430

**A Chinese ink and colour scroll painting**

painted with a mountainous riverscape, foxing, signed, unexamined out of the frame, 124 by 32,5cm; and a Chinese ink and colour scroll painting, with a fisherman on a jetty before a mountainscape, foxing, signed, chopmark, unexamined out of the frame, 137 by 34cm (2)

R12 000 - 15 000

431

**Two Chinese brass and fruitwood standards, 19th/20th century**

each baluster shaft with inscription headed by a horned dragon and Buddhist emblems with spear-shaped terminal, wooden handles, restorations, the larger 110cm high (2)

R8 000 - 10 000



431

432

**A pair of Chinese champlevé enamelled brass lanterns, late 19th century**

each pagoda-shaped top with bells suspended from the corners, surmounted by a flaming pearl finial, the lamp holders pierced with phoenixes amongst clouds, on a turned, knopped support decorated with a three-clawed dragon amongst clouds and various blooms, on a stepped plinth base, fitted for electricity, 122cm high, with loose octagonal ebonised bases (2)

R20 000 - 30 000

\*We do not guarantee electrical fittings



432



430



433

**A pair of Chinese silk panels**

one stitched with lotus blooms below a bird in flight, the other with a pair of birds perched on a flowering wisteria branch with seven insects, each enclosed in a black border embellished with flowerheads, *unexamined out of the frame*, 148,5 by 48cm (2)

R6 000 - 8 000

434

**A Chinese hongmu and burlwood occasional table, Qing Dynasty, 19th century**

of barrel outline, the circular top above a pierced, shaped and beaded frieze, on five bowed conforming supports, on a shaped base with bracket feet, *distress*, 62cm high, 75cm diameter

R15 000 - 18 000

435

**A large Chinese brass figure of Pu-Tai, late 19th century**

seated, with his cloth sack and a spray of peaches, *pitting*, 46cm high; raised on a hardwood stand

R10 000 - 12 000

436

**A Tabriz carpet, Iran, 1940**

*condition: fair*, 440 by 88cm

R3 000 - 4 000



433



434



435

436







LONG GALLERY UPSTAIRS





437

**437**  
**A near pair of Chinese silk panels, Qing Dynasty, 19th century**

stitched with two floral medallions each enclosing four butterflies and five pumpkins, with wave and *ruyi* design headed by a flaming pearl within a flowerhead and butterfly border, *unexamined out of the frame, 148 by 45cm*; the other, similar, *framed, unglazed, faded, holes to frame, 111 by 49cm (2)*

**R10 000 - 15 000**



438

**438**  
**A large Chinese famille-rose vase, Qing Dynasty, 19th century**

the bulbous body enamelled with alternating shaped panels, the first enclosing the Eight Immortals, the second with maiden attendants, a prancing horse and further standard-bearing attendants, and two painted with birds, blossoms, and a flower-filled jardinière, enclosed by a 'millefleur' ground, the neck with further panels of Buddhist objects and flower-filled vases, the rim with cell-diaper and foliate borders, *chips, 81cm high*

**R25 000 - 30 000**

**439**  
**A George III jappaned chinoiserie longcase clock, Joseph Grey, Durham, circa 1780**

29,5cm bronze dial with chapter ring with Roman hour numerals and Arabic minute numerals, subsidiary seconds dial and date aperture, with spandrels to the corners, a moon phase in the arch and inscribed *Joseph Grey, Durham*, the five-pillar movement with anchor escapement striking the full hour on a bell, the hood with outswept cornice, an arched glazed door below flanked by columns, the sides with glazed panels encased in floral and foliate trailing designs, a four-clawed dragon above in a gilt cartouche, the trunk with an arched panelled door depicting figures at various pursuits amongst pagodas interspersed with blossoms, foliage, birds and pine trees, the sides depicting birds amongst trailing foliage and blossoms, on a stepped plinth base with two figures before a riverscape with two cranes to their right and a pine tree to their left, the sides similarly decorated, *208cm high*

**R25 000 - 30 000**



439





440

**440**  
**A set of ten large Chinese ink and colour on paper scroll panels, Qing Dynasty, 19th century**

Painted with a pavilion, the guarded lord seated with advisors and attendants and three young boys, two kneeling whilst one is presenting, with councillors in animated discussion to the right, and young girls, ladies and attendants playing instruments to the left, the entrance guarded by four attendants flanked by two outposts with heralds announcing the arrival of a dignitary on horseback bearing a helmet, the pavilion with scholars, rocks, pine trees, bamboo and blossoms, staining in areas, 152cm high including frame, approximately 495cm long including frames

**R80 000 - R100 000**

**PROVENANCE**

Purchased 20 January 1981 from P.C. Lu & Sons Ltd, 'Works of Art', Peninsula Hotel, Mezzanine Shop ML – 7., West Arcade, Ground Floor, Shop No.8, Kowloon, Hong Kong and accompanied by a certificate of authenticity

**441**

**A pair of Chinese hardwood and silver-inlaid figures of Shou lao, early 20th century**

each holding a peach and a staff, standing on a stylised rocky base, their robes inlaid with silver wirework, one repaired, 40cm high; and a Chinese equestrian, early 20th century, the laughing figure seated backwards, holding a whisk, a bamboo-shaped quiver to his back, on a stylised scrollwork bridge, chips, 33cm high (3)

**R4 000 - R6 000**



441

**442**

**A Chinese blanc-de-chine figure of a Lohan, Qing Dynasty, 19th century**

standing with jovial expression and exposed belly, one hand raised holding a cup to his head, the other a fan, an attendant to his right holding a wine ewer, raised on a stylised rocky base, four-character script mark, chips, firing flaws, 34cm high

**R4 000 - 6 000**



442

**443**

**A Japanese ink and colour on paper scroll painting**

Painted with a cockatoo perched on a magnolia branch, signed, unexamined out of the frame, 117,5 by 39cm; and a Chinese ink and colour on paper scroll painting, painted with two birds perched on a blossoming prunus branch, with inscription, signed, with two seals, unexamined out of the frame, 118,5 by 41cm (2)

**R8 000 - 10 000**



443

Part Lot



444

445

446



447



444

**A Chinese celadon-glazed vase, late 19th century**

baluster, carved with *taotie* masks, the shoulders with lappets, raised on a spreading circular foot, *signed with a two-character mark*, 21,5cm high; and a Chinese celadon-glazed saucer dish, early 20th century, enamelled with prunus blossom, the reverse similarly enamelled, *firing faults, pseudo Qianlong underglaze-blue six-character mark*, 19,5cm diameter (2)

R4 000 - 6 000

445

**A Chinese Ming style stoneware figure of a parrot, Qing Dynasty, 19th century**

modelled perched on rockwork, glazed in shades of green, ochre and brown, *chips*, 19,5cm high; a Chinese stoneware figure of a green-glazed frog, early 20th century, modelled seated on an amber and aubergine-glazed openwork base, 13cm high; and a Chinese Ming style ruyi-head sceptre, 20th century, *repair* (3)

R6 000 - 8 000

446

**A Chinese two-handled bronze censor and stand, Qing Dynasty, 19th century**

the compressed circular body applied with elephant-mask handles, raised on a conforming foot, *minor dents, six-character seal mark*, 14cm wide over handles, the bronze stand raised on three conforming bracket feet each heightened with a boss, 10cm diameter; and a Japanese figural group of two monkeys, Meiji period, 1868-1912, the mother clutching her young to her cheek, raised on a *later* onyx base, 9cm high (2)

R3 000 - 4 000

447

**A pair of Louis XVI style ebonised and ormolu-mounted boule side cabinets, 19th century**

each *later* rectangular grey-veined marble top above a moulded foliate frieze, a pair of panelled glazed doors below enclosing a velvet-lined interior, one with a pair of shelves the other with one shelf, flanked by corbels, glazed sides, on a shaped plinth base with foliate mounts, *minor loss*, 120cm high, 124cm wide, 35,5cm deep (2)

R15 000 - 20 000





448

448

**Two Chinese famille-rose plates,  
Qing Dynasty, 19th century**

the first decorated with seven courtiers in an interior bearing gifts to an overlord enclosed by a border decorated with beetles, grasshoppers, birds, squirrels, snakes, butterflies and fruit, the second with two figures astride their horses with attendants before a riverscape with two figures and their sampans, enclosed by four rondels of goldfish, peonies and brocaded panels, *each 24,5cm diameter*; a Chinese famille-rose covered box, 19th/20th century, *13,2cm wide*; and a Chinese famille-rose vase, Qing Dynasty, 19th century, decorated with panels of figures at various pursuits, the shoulders with gilt *chilong*, *height reduced*, *21,5cm high* (4)

R6 000 - 8 000

449

**A Chinese cloisonné bowl,  
Qing Dynasty, 18th/ 19th century**

ovoid, the interior centred by Buddhist emblems within a lappet border, the body with flowerheads and scrolling foliage against a turquoise ground, the lip with metal border, the exterior enamelled with four *dogs-of-fo* playing with brocaded balls and ribbons, raised on a circular foot, *split, dents, losses, pitting, with a later stand*, *21,8cm diameter*; and a Japanese cloisonné bowl, Meiji period, 1868-1912, circular with lightly everted rim, the interior centred by a leaping carp amongst waves, enclosed by flowerheads and a lappet border, the body enamelled with *ruyi's*, the lip with a flowerhead and foliate band, the rim with a metal band, raised on a circular foot, *dents, losses, restorations, with later stand*, *20cm diameter* (2)

R4 000 - 6 000



449



450

450

**A pair of Chinese enamelled dishes,  
early 20th century**

each enamelled with a pale green-glazed dragon clasping a flaming pearl in its claw enclosed by three further rondels, each painted with a dragon and phoenix contesting a flaming pearl, enclosed by pink, yellow and green enamel, fruit and foliage, the reverse with three iron-red bats, *chips, iron-red six-character mark*, *18,5cm diameter*; and a Chinese famille-rose dish, early 20th century, the centre enamelled with two flower-filled vases enclosed by foliate and cell-diaper bands, the reverse with iron-red lotus blooms and scrolling foliage, *iron-red six-character mark*, *24,5cm diameter* (3)

R2 000 - 3 000

451

**A pair of Chinese sang-de-boeuf  
and gilt-metal mounted vases,  
Qing Dynasty, 19th century**

each baluster shaped, with flared rim, with *later gilt brass mounts, one collar loose, drilled*, *81,7cm high* (2)

R40 000 - R60 000



451

452

**A pair of Italian ebonised and ivory inlaid side chairs, in the manner of Ferdinand Pogliani, Milan, 19th century**

each with shaped and backward sloping back centred by figural panels enclosed by four mask cartouches and panels of scrollwork, stuff-over seat, on block and turned legs inlaid with alternating panels enclosing satyr masks and foliate designs, joined by turned front-, back- and H-stretchers, *distress, restorations* (2)

R15 000 - 20 000

\*This lot is not suitable for export



452

453

**A French ebonised, gilt-metal mounted and marble-topped jardinière, 19th century**

the rectangular-shaped top inset with an associated raised octagonal red-veined marble top, moulded acanthus-leaf border above a gilt-metal frieze with applied masks and 'Sèvres' style cartouches, the sides applied with lion-mask mounts, on cabriole legs mounted with sabots, on metal-mounted cloven hoof feet, *89cm high, 104cm wide, 64cm deep*

R12 000 - 15 000



453

454

**A Chinese rootwood carving of a reclining bearded monk, Qing Dynasty, late 19th century**

with expressive face, his head resting against his left hand, the gnarled natural wood forming his attire and feet, on a conforming base, *minor loss, 33,5cm long including base*

R3 000 - 4 000



454

455

**A Chinese hardwood carving of Shao lao and children, 20th century**

the standing Immortal holding a staff in his left hand and a blossoming peach branch in his right hand, with two small children below, one astride a deer and holding a box aloft, the other holding the peach branch and proffering a small bird to the Immortal, standing on a rocky outcrop, *paper label 'Made in China', 45,5cm high*

R3 000 - 4 000



455



456

**A pair of Chinese bronze dogs-of-fo, Qing Dynasty, 19th century**

one with its paw resting on a pierced ball, the other resting its paw on a lotus bloom, raised on carved hardwood stands with outscrolled legs united by wavy stretchers, *oxidisation, chip*, 33cm high all in (2)

R8 000 - 10 000



456

457

**A pair of Chinese famille-rose wall plates, 20th century**

each painted with a courtesan, one playing a flute seated on a rocky outcrop, the other tending to her morning ritual before an open window with bamboo, each with inscription, enclosed by a black key-fret and cell diaper border, the reverse painted 'TK. SFT', raised on a pierced low foot, 27cm diameter (2)

R4 000 - 6 000



457

458

**A Chinese famille-rose bowl, early 20th century**

of petal outline with turquoise-glazed interior, the reverse enamelled with pink flowers, c-scrolls and foliage against a yellow ground, raised on a conforming foot, *iron-red six-character seal mark*, 20cm wide; and a Chinese famille-rose covered vessel, early 20th century, the circular bowl raised on three zoomorphic legs, the sides applied with dragon-shaped handles, enamelled with pink and yellow-glazed contesting dragons, the cover similarly decorated and applied with a *dog-of-fo* finial, the interior with a turquoise glaze, *chips*, 19cm high (2)

R3 000 - 4 000



458

459

**A Chinese famille-verte dish, Qing Dynasty, 19th century**

circular, enamelled with three petal-shaped panels each with a peony and blossom, enclosed by scrolling foliage and a blue ground, with pink and pale green borders enamelled with key-fret and foliate motifs, *chips*, 40cm diameter; another, late 19th century, the centre decorated with a pair of birds amongst flowering peonies enclosed by a yellow ground, the rim with four panels painted with Buddhist emblems enclosed by a cell diaper band, the reverse with four sprays of green enamel and iron-red peonies, *chips*, 37,5cm diameter; and another, 20th century, oval, the centre with a *shou* symbol enclosed by radiating leaves heightened with colourful butterflies, the rim with sprays of flowerheads enclosed by peonies, fruit and butterflies, *chips*, *iron-red 'MADE IN CHINA'*, 42cm wide (3)

R4 000 - 6 000



459



460

460

**Muriel Rycroft**

SOUTH AFRICAN 20TH CENTURY

***Girl in a Blue Frock***

signed and dated 1957 oil on board  
90 by 60cm; 110 by 79 by 6,5cm including  
frame

R2 000 - 4 000



461

461

**A Chinese famille-verte 'cong' vase, Qing Dynasty, 19th century**

the sides moulded in relief with *I Ching* characters, on a conforming foot, 27cm high; a Chinese famille-verte vase, Qing Dynasty, 19th century, the sides moulded in relief with a pair of mask-and-ring handles, decorated with a pair of dragons contesting a flaming pearl above stylised waves enclosed by Greek-key borders, apocryphal six-character Kangxi mark, 25,5cm high; and a Chinese polychrome enamel Gu-shaped vase, Qing Dynasty, 19th century, with flared neck and base, with shou and character marks, damaged, 31cm high (3)

R9 000 - 12 000

462

**A Chinese silk scroll painting, 19th century**

in colours, painted with two noble ladies and their attendants on a terrace flanked by a prunus tree, bamboo and scholar's rocks, minor discolouration, holes to border, framed, 143 by 62cm

R12 000 - 15 000



462

463

**A French ebonised, ormolu-mounted, ivory and mother-of-pearl inlaid cabinet, 19th century**

the serpentine-shaped grey-veined marble top above a frieze inlaid with mother-of-pearl scrolling foliage, a panelled door below centred by an ivory flower-filled jardinière enclosed by scrolling foliage, enclosing a pair of shaped shelves, shaped sides with rounded canted corners mounted with trailing ribbon and flowerheads, shaped apron centred by a coquillage, on cabriole legs headed by Bacchanalian masks, on paw feet, minor losses and cracking, 115cm high, 118cm wide, 115cm deep

R8 000 - 10 000

\*This lot is not suitable for export



463



464

**A large Chinese famille-rose vase, Qing Dynasty, late 19th century**

of tapering ovoid form, the body enamelled with eight quatrefoil panels, each respectively depicting butterflies, birds, insects, various blossoms including peaches, peonies and chrysanthemums and figures at various pursuits, surrounded by blooming peonies, butterflies and scrolling foliage against a gilt ground, enclosed by four further panels, each enclosing birds, insects and blooms respectively, the neck applied with four gilt *chilong* gazing at quatrefoil panels depicting figures at various pursuits against a conforming ground, the sides applied with gilt handles of two *shi-shi* contesting a peach, the lip decorated with four cartouches similarly decorated, 92cm high

**R25 000 - 30 000**

This lot appears in photographs of Harcroft, Perak, during Charles and Muriel Rycroft's occupancy post 1945.



464

465

**A French giltwood armoire, 20th century**

the outswept moulded pediment centred by an acanthus-leaf and winged cresting, a shaped moulded and bevelled mirrored door below enclosing five shelves, shaped moulded sides, moulded scrolling apron, on double cabriole legs headed by acanthus leaves, *loss*, 270cm high, 130cm wide, 60cm deep; and a pair of French giltwood mirrored doors, 20th century, similar, 98cm high, 48,5cm wide, 3,3cm deep (3)

**R20 000 - R25 000**



465 Part Lot

## LINEN PASSAGE ROOM





466

**Two Chinese famille-rose vases, Qing Dynasty, 19th century**

each baluster body with fold-over wavy rim, the shoulders moulded in relief with *chilong*, the neck moulded with two pairs of *dogs-of-fo*, the whole painted with panels of battle and court scenes enclosed by peonies, peaches and foliage above a diaper border, *restorations, loss, the taller 45,5cm high* (2)

R6 000 - 8 000



466

467

**A Chinese soapstone figure of Guanyin, late 19th/ early 20th century**

the standing robed figure holding a *ruyi* sceptre, her coiffed hair in an elaborate *chignon*, the stone of a pale mottled cream tone, *chips, wear and scratches to the base, 26cm high*; another, of a young maiden, late 19th/early 20th century, the standing figure holding a fish in her left hand, the stone of a pale mottled cream tone, *chips, neck repaired, 23cm high*; and a soapstone figure of an elephant, late 19th/early 20th century, standing on a plinth base, the stone of a pale mottled cream tone, *chips, scratches, 14cm long* (3)

R1 000 - 1 500

**PROVENANCE**

The elephant purchased from the Hugh Tevis sale, 'Monterey', Constantia, Cape, 31 March 1952, lot 148.



467



468

468

**A small Victorian walnut chest of drawers**

with rectangular moulded top above three long drawers on a conforming base, *28cm high, 30cm wide, 22cm deep*; six miscellaneous sewing boxes and two sewing baskets, *in sizes* (9)

R400 - 600

469

**A Chinese Export hardwood and camphor-lined chest, 20th century**

the rectangular hinged lid centred by script marks flanked by figures on a bridge before a riverscape and pagodas, the interior with a loose tray, the front with conforming decoration, dove-tailed sides with carved rondels, on bracket feet with *later* castors, *cracks, 61cm high, 121cm wide, 50,5cm deep*

R4 000 - 6 000



469

470

**A George III style mahogany and burr walnut-veneered chest-on-chest manufactured by NS Fraser Ltd, London, Furniture Makers, 20th century**

*in two parts*, the outsweped cornice above three cockbeaded short drawers, three graduating cockbeaded fall-fronts below each enclosing a compartment, the lower section comprising two cockbeaded long drawers, on bracket feet, *distress, restorations*, 183cm high, 103cm wide, 54cm deep

R4 000 - 6 000

471

**A quantity of organza table linen**

comprising: organza table mats, runners, each with pale blue embroidery, and a quantity of miscellaneous embroidered table linen including table mats, table runners and napkins

R900 - 1 200

472

**A quantity of Madeira lace table linen**

including a square lace table cloth, four runners, thirty-two place mats and thirty-five napkins, *the table cloth 124 by 124cm*

R1 000 - 1 500

473

**A quantity of Madeira lace table linen**

including: nine place mats, a miscellaneous collection of place mats, thirty-six napkins and a table runner

R800 - 1 000

474

**A quantity of linen with cross-stitch embroidery**

including a set comprising a tablecloth with Pagoda design and twelve napkins, three tablecloths, *the largest cloth 245 by 171cm*, a quantity of napkins and further examples

R800 - 1 000

475

**A Madeira lace linen**

tablecloth and thirty-two napkins, *the tablecloth 240 by 144cm*

R800 - 1 200

476

**A quantity of embroidered table linen**

comprising: one tablecloth embroidered with fruit, twelve napkins, *en suite*, 240 by 150cm; one square tablecloth embroidered with fruit with six napkins, *en suite*, 115 by 120cm; one tablecloth embroidered with pineapples and fruit, with twelve napkins, *en suite*, 246 by 160cm; one tablecloth embroidered with fruit, with ten napkins, *en suite*, 207 by 164cm; a set of eight place mats, one table runner and eight napkins, *the runner 82 by 38cm*; a set of floral embroidered table linen, including eight place mats, a table runner and eight napkins, *the runner 102 by 41cm*; a partial set of floral embroidered table linen, including eight place mats, one runner and two napkins, *the runner 104 by 41cm*; and a miscellaneous group of table linen, comprising: tablecloths, table mats and napkins, *in various designs and sizes*

R1 200 - 1 500



470





481



482



477

#### A quantity of table linen

comprising: two table cloths, twelve lace placemats, one lace runner and sixteen napkins, *the table cloths approximately 123 by 123cm*

R700 - 900

478

#### A quantity of miscellaneous table linen

comprising: table cloths, table mats, coasters, napkins and table runners

R1 000 - 1 200

479

#### A quantity of Madeira table linen

including twelve place mats, twelve napkins, three table runners, and miscellaneous table napkins

R1 500 - 2 000

480

#### A quantity of bed linen

comprising: eight flat single sheets, *177 by 250cm*; and a quantity of pillowcases

R400 - 600

481

#### Two Chinese rugs, modern

*condition: stains, 220 by 13cm and 130 by 80cm (2)*

R1 000 - 1 500

482

#### A pair of Chinese silk embroidered panels, 20th century

each stitched with a stylised peacock pair before flowering trees, *framed, creasing, 53 by 31cm*; another, similar, *signed, framed, 44,7 by 33,7cm*; and another, late 19th/early 20th century, stitched with a long-tailed bird perched on a blossoming chrysanthemum and peony branch, with a dragonfly above, *framed, 63,5 by 49,5cm (4)*

R2 500 - 3 000

483

**European School 20th Century**

***Portrait of a Girl in Pink***

signed indistinctly  
oil on canvas  
49 by 39cm; 64 by 52 by 6cm  
including frame

R1 000 - 1 500



483

484

**A pair of Japanese bronze two-handled bowls, late 19th century**

each indented globular shakudō body applied with bamboo and birds, the sides applied with stylised bamboo handles, raised on four elephant feet, tubular loose aperture, the interior with a hole, 22cm high (2)

R4 000 - 6 000



484

485

**An English red and gilt lacquer chinoiserie miniature longcase timepiece, Elliott, England, circa 1920**

the 8,5cm silvered dial with gilt chapter ring with Roman hour numerals and outer minute markers, inscribed *An Elliott Clock, Made in England*, mechanical movement, of pagoda outline, the trunk embossed with two figures before a riverscape, the sides and plinth base embossed with a sprig of flowers, raised on bracket feet with moulded plinth base, 59,5cm high

R2 000 - 4 000



485

486

**A pair of Chinese silk panels, modern**

each rectangular with indented corners, depicting a riverscape with islands, houses, pagodas, birds and figures at various pursuits enclosed by flowering shrubs, trees and sampans, minor wear, framed, 168,5 by 69,5cm including frame (2)

R1 000 - 1 200



486



## FREIDA LOCK DINING ROOM





487

**Bertram Walter Dumbleton**

SOUTH AFRICAN 1896-1966

*Dahlias, Chrysanthemums and Fruit*

signed  
oil on canvasboard  
44,5 by 59,5cm excluding frame;  
70 by 82,5 by 6cm including frame

R15 000 - 20 000

487



488



488

**Freda Marston**

BRITISH 1895-1949

*Flowers in a Vase*

signed  
oil on canvas  
39 by 45,5cm excluding frame;  
51,5 by 60,5 by 3,5cm including frame

R5 000 - 7 000



489

489

**Freida Lock**

SOUTH AFRICAN 1902-1962

*Spring Flowers and Apples*

signed and dated 51  
oil on canvas  
50 by 50cm excluding frame;  
70 by 68 by 6,5cm including frame

R60 000 - 80 000



490

490

**Edward Roworth**

SOUTH AFRICAN 1880-1964

*Evening on a Farm, Stellenbosch*

signed and dated 1950; signed,  
inscribed with the title and the  
artist's address on the reverse  
oil on board  
50 by 74,5cm; 68 by 93 by 7cm  
including frame

R3 000 - 5 000

491

**A French brass carriage clock, retailed by Mappin & Webb Ltd, Paris, circa 1900**

the 5,5cm rectangular white dial with chapter ring, with Arabic numerals and outer minute markers, inscribed *Mappin & Webb Ltd, Paris*, anchor escapement, corniche five-glass case, shaped handle, raised on bracket feet, *brass worn, 11cm high*; and an Art Deco silver and enamel timepiece, Mappin & Webb, 1930s, the 7cm diamond-shaped white dial inscribed *Mappin & Webb*, with hour and minute markers, lever for fast and slow, the rectangular case with black enamel and silver decoration, *the case stamped A&C with the numerals 2572, with easel back support, 6,5cm high (2)*

R4 000 - 6 000

492

**A Javanese silver-mounted kris**

with engraved handle, the plain scabbard embellished with scrolling foliate handle, *the blade with rust, lacking metal bandings of scabbard, 35,5cm long*; and another, brass-bound, *the blade with rust, 29cm long (2)*

R1 500 - 2 000





491



492



493



494

493

### A French brass cloisonné carriage clock, circa 1850

the 4,5cm circular enameled cream dial with Roman numerals and outer minute markers, set in a cloisonné mask of flowerheads and scrolling foliage, four-pillar cylinder escapement, five-glass case with Corinthian columns to each corner surmounted by turned finials, fixed handle, on turned bun feet, *brass worn, not in working order, 13cm high*; and a gilt brass carriage clock, E. Burmester, Cape Town, 20th century, the 5cm gilt dial with enameled chapter ring with Roman numerals and outer minute track, subsidiary seconds dial below, inscribed *E. Burmester, Cape Town, French cylinder escapement, the four-glass case surmounted by a serpentine-shaped foliate c-scroll frieze, conforming apron, on turned bun feet, foliate-shaped swing-handle, case distressed, 12cm high* (2)

R4 000 - 6 000

494

### A Chinese bronze two-handed vessel, Ming Dynasty, 1368-1644

moulded in low relief with a panel of *taotie* heads above a border of mythical creatures and lappets, the sides and front applied with ring-handles headed by masks, against a *leiwen* ground, *some damage, drilled, 39cm high*; a pair of Chinese Gu-shaped bronze vases, moulded in low relief with stylised dragons, the corners applied with flanges, *17,5cm high*; and a Japanese earthenware vase, early 20th century, the ovoid body moulded in high relief with a pair of three-clawed scaly dragons contesting flaming pearls, against a stippled ground, *scratches, abrasions, 46cm high* (4)

R7 000 - 9 000

495

### A stinkwood cupboard-on-stand, Thesen, Knysna

the moulded arched top above a pair of panelled doors enclosing a *later* fitted interior above a frieze drawer, with panelled sides, raised on cabriole legs joined by a wavy cross-stretcher with claw-and-ball feet, *Thesen label, 170cm high, 111cm wide, 45cm deep*

R7 000 - R9 000



495

496

**A Chinese blue and white dish,  
late 19th/ early 20th century**

decorated with a band of young boys  
partaking in the Dragon Festival enclosing a  
rondel decorated with a pair of contesting  
dragons, the lobed rim decorated with  
pine trees, the reverse loosely painted with  
ribbons and clouds, *foliate diagonal seal*,  
42cm diameter

R2 000 - 3 000



496

497

**A Chinese bronze 'Hu' vessel,  
Ming Dynasty**

baluster, the shoulders applied with *taotie*  
mask ring-handles, the body with bands of  
*taotie* masks and scrollwork above lappets,  
against a *leiwen* ground, raised on a *later*  
foot, *repair*, 54,5cm high

R8 000 - 10 000



497

498

**Edward Roworth**

SOUTH AFRICAN 1880-1964

**A Tzitzzi-Kamma Lagoon (sic)**

signed; signed and inscribed with the title  
on the reverse

oil on board

60 by 85cm excluding frame;

85 by 107 by 7cm including frame

R4 000 - 6 000



498

499

**A Japanese blue and white vase,  
late 19th/ early 20th century**

the baluster-shaped body painted with two  
sages in a mountaineous landscape with a  
pavilion and pine trees, *seal mark*, *damaged*,  
*chips to the base*, 58cm high

R5 000 - 7 000



499

500

**A Cape stinkwood low cupboard,  
19th century**

the serpentine shaped moulded top above  
a pair of panelled doors enclosing two  
shelf and a *later* addition, panelled sides,  
shaped apron, on cabriole legs and pad feet,  
restorations, 22cm high, 126cm wide, 71cm  
deep

R12 000 - 15 000



500



501

**A set of nine Chinese polychrome enamel pedestal dishes, 20th century**

each of wavy outline, the centre with a *shou* symbol enclosed by lilies, scrolls and foliage against various coloured grounds, enclosed by a key-fret border, the reverse with three sprays of flowers, turquoise-glazed foot, *iron-red six-character mark*, wear to enamels, 23cm diameter; a Chinese enamel covered condiment box, 20th century, enamelled with flowers and bats in shades of turquoise against a lime-green ground, enclosing an interior enamelled with butterflies, grasshoppers and sprays of flowers, with an s-shaped division, *iron-red four-character mark*, enamel loss, 11,2cm diameter; and a Chinese enamelled ginger jar and cover, modern, similarly decorated, with pierced cover, *iron-red six-character mark*, 9,5cm high (11)

R1 500 - 2 000

502

**A Chinese 'Cadogan' polychrome teapot, 20th century**

moulded in the form of a melon, the side applied with branch-form handle, foliate spout, the stopper in the form of a bat, 7,5cm high; a Chinese enamelled dish, early 20th century, the centre decorated with bats, plums and *shou* symbols against a turquoise ground, the reverse with three iron-red bats, *restorations*, *four-character seal mark*, 18cm diameter; and a Chinese famille-verte leaf-shaped bowl, early 20th century, the interior with panels decorated with sprays of flowerheads, the reverse similarly decorated, raised on a low foot, *chip*, *four-character iron-red seal mark*, 18cm long (3)

R900 - 1 200

503

**A set of ten Chinese blue and white bowls, Qing Dynasty, late 19th/ early 20th century**

each with three sprays of peonies, the slightly everted rim with a spearhead border, *underglaze-blue six-character mark*, 13cm diameter; a set of six, similar, 8,2cm diameter; a set of eight Chinese blue and white saucer dishes, modern, each centre decorated with five bats enclosing the *shou* mark, enclosed by stylised scrolls and bat motifs, enclosed by a border of translucent petals, *underglaze-blue single character mark*, chips, 14,2cm diameter; a set six Chinese blue and white bowls, modern, 10,5cm diameter; a set of six small Chinese blue and white dishes, modern, 9,5cm diameter; a set of four Chinese blue and white spoons; and a pair of Chinese blue and white wine cups, modern, with gilt highlights, 6cm diameter (42)

R3 000 - 5 000

504

**A set of ten Japanese blue and white fish platters, early 20th century**

*in sizes*, realistically modelled, *underglaze-blue six-character mark*, *firing faults*, *chips*, *hairline cracks*, *restorations*, the largest 46,5cm long; two further examples, similar, *repairs*, *broken tail*, *chips*, 30cm diameter; a set of six Japanese blue and white dishes, 20th century, each transfer-printed with shaped panels of flowers and fruit within flowerhead borders, 28,5cm diameter; and two Japanese blue and white transfer-printed saucers, 20th century, 10,5cm diameter (20)

R4 000 - 6 000



501



502



503



504



505

505

**Vernon Spencelayh**

BRITISH 1891-1980

***Larkspur***

signed and dated 1950; inscribed with the artist's name, address and title on a label on the reverse  
oil on board  
60 by 50cm; 76 by 67 by 4cm  
including frame

R1 500 - 2 000



506

506

**A set of eight Louis XVI style beech side chairs retailed by Block & Chisel, modern**

each with oval padded back in a conforming frame, stuff-over serpentine seat, on turned fluted legs and stile feet (8)

R9 000 - R12 000

507

**A refectory style oak painted table retailed by Block and Chisel, modern**

the rectangular plank top above a plain frieze, on turned tapering legs joined by an H-stretcher, on compressed bun feet, 75,5cm high, 119,5cm wide, 239,5cm long

R20 000 - R25 000



507



508

**A Mintons transfer-printed part dinner service, mid 19th century**

each piece printed with scrolling iron-red and underglaze-blue foliage, the cavetto with a cell-diaper and foliate band, sienna-glazed rim, comprising: eleven soup plates, eleven dinner plates, nine hors d'oeuvre plates, five dessert plates, a two-handled vegetable tureen and cover, a pair of two-handled comports and stands, and three platters, *in sizes, chips, enamel loss, staining, impressed Mintons date cyphers, blue-printed factory mark, the largest platter 38cm long* (42)

R1 500 - 2 000



508

509

**A Victorian silver gilt plateau, Charles Thomas Fox & George Fox, London, 1853**

circular, set to the centre with a mirror enclosed by a foliate border, the waisted body moulded with eight oval bosses enclosed by trail work united by double links, raised on four pierced scroll feet, *mirror with distress, 31cm diameter*; and an Edward VII silver-mounted claret jug, Charles Boyton (III), London, 1901, the glass body surmounted by an embossed band of grapes, vine leaves and Bacchanalian masks, the branch-form handle moulded in relief with further leaves and grapes, the hinged cover surmounted by a lion finial supporting a vacant shield, the lower half of the body with foliate collar, the cylindrical tapering body cut with a band of printies above facets, star-cut base, *28cm high* (2)

R10 000 - 12 000



509

510

510

**Three George III silver neoclassical candlesticks, Fenton, Creswick & Co, Sheffield, 1781**

each urn-shaped sconce raised on a tapering faceted column headed by swags, on a stepped spreading circular foot engraved with a *later crest*, with beaded rim, detachable drip-pan, *loaded, one drip-pan unmarked, 26cm high* (3)

R15 000 - 20 000

511

**A Yazed Kirman carpet, Iran, circa 1960**

*condition: good, 410 by 305cm*

R6 000 - 8 000



511



# DRESSING ROOM





512

**French School 20th Century**

***Lilac in a Vase***

signed Francois Hoppe  
oil on canvas  
67 by 57cm; 83 by 73 by 6cm including  
frame

R2 000 - 4 000

513

**A pair of German black and white  
glazed figures of a courtier and  
his companion, late 19th century**

each dressed in eighteenth century attire,  
the gentleman with his right knee resting  
on a stool, holding a walking stick in his  
right hand, his companion with a putti  
at her feet, on a stepped circular socle,  
each stand moulded with masks, shell and  
scrollwork, on four paw feet, *restorations*,  
*pseudo KPM mark, impressed 15065*, 45cm  
high excluding stand, 56cm high with stand;  
and a Continental earthenware figure of a  
gallant, late 19th century, leaning against a  
tree-trunk, with an open book in his right  
hand, his left hand resting on his cravat,  
*hairline crack, the base with coloured fillings*,  
*chips, impressed 2556*, 67cm high (3)

R3 000 - 4 000

514

**An alabaster and brass-mounted  
pedestal, 19th century**

the rectangular top above a brass-  
mounted collar, turned tapering column,  
on a stepped plinth base, *chips*, 109,5cm  
high, 28,3cm wide, 28,1cm deep

R1 500 - 2 000

515

**An Edwardian mahogany-  
veneered chest of drawers**

the rectangular top with canted corners  
above four panelled graduated drawers,  
on cabriole legs with *later pads*, 120,5cm  
high, 86,5cm wide, 45,5cm deep; and a  
mahogany-veneered occasional table,  
20th century, the oval top above a reeded  
frieze, on turned supports joined by a  
turned stretcher, on four reeded outswept  
legs terminating in brass lion-paw  
cappings, *stringing to the top, veneer loss*,  
49,5cm high, 91cm wide, 54,5cm deep (2)

R2 000 - 3 000



512



513



514



515

516

# Italian School

LATE 19TH/EARLY 20TH CENTURY

## Purple Flowers

signed indistinctly

oil on canvas

21,5cm by 16cm excluding frame;

26,5 by 21,5 by 2,5cm including frame

R200 - 300



516

517

# Vernon Spencelayh

BRITISH 1891-1980

## Flower Piece

signed and dated SA 1950; inscribed

with the artist's name, title and

address on a label on the reverse

oil on panel

49,5 by 59,5cm excluding frame;

63 by 73 by 5cm including frame

R1 500 - 2 000



517

518

# An American bronze figural table lamp, 20th century

rectangular with stepped corners, modelled with a young girl seated on a plinth, with frosted amber cone-shaped glass shade, *chips, stamped 'MADE IN USA', fitted for electricity, 19cm high*

R800 - 1 000

\*We do not guarantee electrical fittings



518

519

# A Swiss Quality Excelsior simulated rosewood, marquetry, ebonised and inlaid eight-air cylinder music box, late 19th century

the rectangular moulded hinged top inlaid with a marquetry panel of musical instruments, the inside cover listing the eight airs flanked by the Quality Excelsior plaques, lever for stop/play and change/ repeat, ivory escutcheon plate, the sides with metal carrying-handles, on compressed block feet, *stringing throughout, distress, 16,2cm high, 62cm wide, 25,5cm deep*

R5 000 - 7 000

\*This lot is not suitable for export



519

520

# A stinkwood bombé fall-front bureau, 20th century

the rectangular top with wavy gallery, above a panelled fall-front enclosing drawers and compartments, with three graduated long drawers below, on claw-and-ball feet, *106cm high, 115cm wide, 66cm deep*

R3 000 - 4 000



520





521

521

### Vernon Spencelayh

BRITISH 1891-1980

#### *Still Life with Fan and Flowers*

signed

oil on board

60 by 49,5cm; 80 by 68,5 by 5,5cm including frame

R1 500 - 2 000



522

522

### Vernon Spencelayh

BRITISH 1891-1980

#### *Lace*

signed and dated SA 1950; inscribed with the name, title, address and price on a label tied to the reverse

oil on board

34,5 by 44,5cm excluding frame; 46 by 56,5 by 3,5cm including frame

R1 000 - 1 500

523

### An Indian plated pedestal bowl, late 19th century

the compressed globular body moulded in high relief with panels of *shiva*, wavy rim, raised on a domed foot with stiff-leaf border, *split*, 15,5cm high; and a Thai brass and copper octagonal tray, late 19th/early 20th century, the centre engraved with a lion brandishing a sword in one paw, within radiating foliate panels, enclosed by stiff-leaf borders and further foliate panels, *splits*, 44cm diameter (2)

R800 - 1 000



523

524

### An imbuia side table, 20th century

the rectangular moulded top above a linenfold frieze, on cabriole legs with claw-and-ball feet, *minor wear*, 76cm high, 99cm wide, 60cm deep

R800 - 1 000

524



525

### A Middle Eastern ebonised fruitwood, marquetry and bone-inlaid table, 19th century

the rectangular moulded crossbanded top profusely inlaid with geometric forms against a latticework ground, on four faceted columns, the conforming platform base with compressed block feet, *stringing throughout, restorations, losses*, 67,5cm high, 90,5cm wide, 60cm deep

R3 000 - 4 000

\*This lot is not suitable for export



525



526

**526**  
**A Chinese Export teak stool,**  
**20th century**

with upholstered drop-in seat, the apron carved with birds and key-fret ends, raised on four figural supports with block feet, *distress*, 47,5cm high, 51cm wide, 41cm deep

R800 - 1 200



527

**527**  
**South African School**  
**20th Century**

***Still Life with Flowers***

indistinctly signed  
oil on canvas  
60 by 48cm; 75 by 63 by 3cm  
including frame (3)

R1 500 - 2 000

Another *Still Life of Flowers in a Vase*, signed Helen Rabine and dated 1943, paper laid down on card, 61,5 by 46,5cm, 70 by 54 by 3cm including frame; and a watercolour, *Market Bunches*, signed Lady Rey

**529**  
**A Chinese 'millefleur' enamel**  
**vase, early 20th century**

the bulbous body with multiple flowerheads enamelled in shades of pink, white and yellow, *drilled, hairline crack, fitted for electricity, fitted with shade and a damaged stand*, 51cm high including shade; and a Chinese 'millefleur' saucer dish, Qing Dynasty, late 19th/early 20th century, the centre enamelled profusely with flowerheads, the reverse with three sprays of peonies and foliage, *gilding slightly worn to rim, iron-red six-character mark*, 18,5cm diameter (2)

R2 000 - 3 000

\*We do not guarantee electrical fittings



529

**528**  
**Vernon Spencelayh**

BRITISH 1891-1980

***Carnations***

signed and dated SA 1950; a label on reverse bearing inscription oil on board  
by 33cm excluding frame;  
57 by 47 by 3cm including frame

R1 000 - 1 500

**530**  
**A walnut and giltwood**  
**occasional table, 19th century**

the rectangular top with moulded foliate gilt rim above a frieze, on carved supports united by a shaped shelf, on acanthus-leaf-headed stile feet, 70cm high, 57,5cm wide, 56,5cm deep

R4 000 - 6 000



530



531

**South African School 20th Century**

***Still Life of Bluebells and a Pipe***

signed H\*\*\* Hedis  
oil on paper laid down on board  
by 32,5cm; 56 by 43 by 2,5cm  
including frame (3)

R1 200 - 1 600

And two further examples, *Still Life with Roses*, unsigned, oil on cardboard, 45 by 32 by 5cm; and *Narcissus in a Vase*, 54 by 40 by 2,5cm



531

Part Lot

532

**An Edwardian style giltwood mirror, 20th century**

the oval plate within a beaded surround, the frame surmounted by an acanthus-leaf cresting flanked by trailing bellflowers and ribbons, the apron with acanthus leaf cresting, 139,5cm high, 75cm wide

R3 000 - 4 000



532

534

**Two Edwardian mahogany and upholstered side chairs, late 19th/ early 20th century**

in sizes, each moulded openwork back centred by a leaf cresting, with pierced foliate splat, conforming bottom rail, stuff-over seat, on restrained cabriole legs (2)

R3 000 - R4 000



534

533

**An English oak, mahogany and satinwood inlaid eight-day longcase clock, W M Glover, Worcester, circa 1780**

the 31cm brass dial with a silvered chapter ring with Roman hour numerals and Arabic minute numerals, subsidiary seconds dial and date aperture, inscribed *W. M. Glover, Worcester*, spandrels to the corners, the four-pillar anchor movement striking the full hour on a bell, the arched hood with glazed door flanked by fluted columns, the broken swan-neck pediment surmounted by three eagle-and-orb finials, the trunk with a panelled door inlaid to the centre with a diamond-shaped cartouche, a panelled vacant cartouche below, the plinth base inlaid with a star, on bracket feet, restoration to the inside of the door, 220cm high

R15 000 - 20 000



533



535

535

**A pair of Chinese brass dishes, 20th century**

each centre moulded with figures within a key-fret border enclosed by a pair of dragons in pursuit of a flaming pearl, the reverse with a pair of dragons and script, 26cm diameter; a miscellaneous group of brass and multi-coloured enamelled wares, including seven bowls, in sizes, the tallest 8cm high; a pair of ashtrays in the form of shoes, each 9cm long; a pair of brass ashtrays, each inlaid with a Chinese coin, 9cm diameter; a Chinese brass pedestal dish, 20th century, 15cm diameter; and a brass dinner gong, 20th century, the later circular gong engraved with the image of 'Jenny Jones', suspended from an arch engraved with key-fret decoration, set on a rectangular oak base, later mallet, 24,5cm high (15)

R800 - 1 000



536

536

**Five Chinese coloured ink on silk concertina books, early 20th century**

comprising: 'The Twenty four cases of Filial Piety', 'The Story of Rice and The Story of the flavour of Tea', 'The Story of Chinese Fashion', 'Biographies of Twelve Chinese Great Scholars' and 'The Eight Fairies Festival', each with fruitwood cover carved and stained with characters (5)

R1 000 - 1 500

537

**A Tabriz carpet, Iran, circa 1950**

condition: some wear, 325 by 200cm

R4 000 - 5 000



537

538

**Various**

A quantity of miscellaneous books on Film, Music, Manuals, DIY and others (Qty)

R600 - 700

539

**A Regency mahogany breakfast table**

the rectangular top above a reeded rim, on a tapering column with lotus-carved socle, on four hipped outswept reeded legs terminating in brass caps and castors, loss and crack to reeding, 75,5cm high, 137cm wide, 104,5cm deep

R3 000 - 5 000



539



## TRAVEL ROOM



540

**Charles Theodore Middleton**

ENGLISH 1756-1818

*The City of Malacca; and Various Vegetable Productions of the Asiatic Islands in the East Indies, two*

engraved for Middleton's Complete System of Geography engraving  
each sheet size: 19 by 29,5cm;  
34 by 43,5 by 2,5cm including frame  
(2)

R1 500 - 2 000

541

**Jodocus Hondius**

DUTCH 1563-1612

*Nova Africae Tabula Auctore*

hand coloured engraving  
39,5 by 53cm excluding frame;  
42 by 55,5 by 1cm including frame

R600 - 800

542

**Indonesian School**

20TH CENTURY

*Tropical Paradise, two*

each indistinctly signed  
oil on canvas  
each 37 by 50cm; 47 by 60 by 2cm  
including frames (5)

R500 - 700

and three Island Scenes

543

**Four African hardwood and ivory-mounted baskets, 20th century**

*in sizes, each of navette form, the arched tusk handles carved with hippos, elephants, fruits and flowers, raised on a pedestal foot, one damaged, one repaired, the longest 51cm long (4)*

R400 - 600

\*This lot is not suitable



540



541

544

**An American steamer/ luggage trunk manufactured by Oshkosh Trunks Inc., Oshkosh Wisconsin USA, Reg. US Pat Off, 19th/ 20th century**

the hinged rectangular top applied with a carrying-handle impressed 090, hinged sides, the edges with brass mounts and close nailed, the lock inscribed OTC51A, The Yale & TOWNEMFG.Co., two sides applied with a pair of wooden strips, on castors, manufacturer's metal plaque, 107cm high, 67,5cm wide, 57cm deep; a British steamer/wardrobe trunk manufactured by The Antler Super Trade Wardrobe Trunk, 20th century, the hinged rectangular top applied with a carrying-handle and inscribed with an M, the edges with brass mounts and close nailed, the sides inscribed with an M, the Yale lock stamped AR6 and ANTLER, manufacturer's metal plaque, on round feet, distress to the one side, 103cm high, 55cm wide, 39cm deep; and another, manufactured by Hartmann Trunk Company, 20th century, the hinged rectangular top with hinged sides, the edges with brass mounts and close nailed, inscribed to the side C. L. RYCROFT WANTED on VOYAGE 6, on four turned feet, manufacturer's paper label, partial paper label to the reverse Peninsular & Oriental Steam Navigation Company, lacking carrying-handle, 99cm high, 57cm wide, 53cm deep (3)

R4 000 - 6 000



542

Part Lot



543



544







545

545

**Three Oriental bamboo and metal-bound vessels**

each of tapering conical form mounted with brass and copper flanges centred by bosses, splits, two with liners, the tallest 24cm high (3)

R900 - 1 200

546

**Abu Baker Ibrahim**

MALAYSIAN 1925-1977

***Two Studies of Junks; a Seascape; and a Stilhouse, four***

each signed

watercolour

sheet size: 27,5 by 37,5cm;

42,5 by 53,5 by 2cm including frame (7)

R3 000 - 4 000

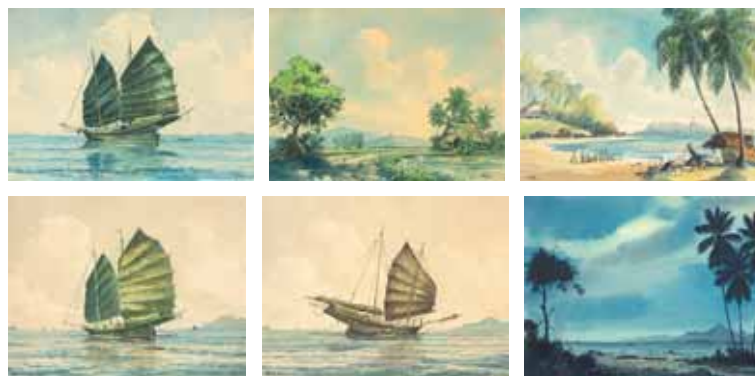
Another watercolour of a Junk, and two further Stilhouses by an unknown hand

547

**A leather suitcase**

the hinged studded top inscribed C. L. RYCROFT NO.3, 288, enclosing a fabric-lined compartment and loose tray, the sides applied with carrying-handles each inscribed C. L. R., raised on studs, 30,5cm high, 87,5cm wide, 50,5cm deep; and a leather 'Gladstone' bag, inscribed C. L. R. to the front, enclosing a fabric-lined interior with two compartments, with carrying-handle, raised on four studs, wear, 23,5cm high, 46cm wide, 23,5cm deep (2)

R2 000 - 3 000



546

Part Lot



547



548

548

**A Yoruba onile bronze staff, 19th/ 20th century**

60cm high

R3 000 - 4 000

549

**A Chinese hardwood stand, late 19th century**

the square panelled top above a ice-plate moulded frieze, beaded shaped apron, on square-section legs with incurved feet joined by a shaped box-stretcher, 90,5cm high, 25,5cm square; and another, similar but smaller, 64,5cm high, 27,8cm square (2)

R6 000 - 8 000



549

550

**Two Japanese bronze hand mirrors, 19th century**

each moulded with a pair of cranes before 'The Three Friends', with inscription, later hook, one handle drilled, dents, the taller 28,5cm high; and a Japanese bronze mirror, moulded in relief with Buddhist emblems enclosing a boss, the plaque 21,5cm diameter, the stand with carved openwork and raised on a waisted rectangular base, 36cm high (3)

R4 000 - 6 000

551

**A Penang pewter tea set, Malaysia, 20th century**

comprising: a carafe and two tea cups, each body with gold-plated bands enclosing scrolling foliage, stamped Penang Pewter 97% Malaysia, the carafe 14,6cm high; a pair of Penang pewter vases, Malaysia, 20th century, each of elongated tapering form, one with inscription "TO DEAR CHARLES WITH BEST REGARDS FROM CHUAN, PENANG, 24-7-75", stamped Penang Pewter Malaysia, 23,2cm high; and a Selangor pewter wall-plate, Malaysia, 20th century, circular, with flowerhead and scrolling foliate border, the centre inscribed "TO DEAR UNCLE CHARLES WITH BEST REGARDS FROM BROTHERS & SISTERS OF CHEW FAMILY, PENANG, 24-7-75", with hook, stamped Selangor Pewter Malaysia - Singapore, 24,5cm diameter (6)

R600 - 800

552

**A Gabeh carpet, Iran, modern**

condition: fair, 220 by 145cm

R2 000 - 4 000



550



551

553

**Peters, GH**

***Impressions of a Journey Round the World***

Waterlow and Sons, London, 1897 and various books of similar interest (Qty)

R1 200 - 1 500

554

**A Jacobean-style teak refectory style table, manufactured by Pritchard & Co Ltd, Penang, Ipoh & Sungei Patani, 19th century**

the rectangular top above a frieze carved with half-moon roundels enclosing flowerheads interspersed with scrolling foliage, on turned bulbous supports carved with egg-and-dart and foliage, on shaped brackets joined by a stretcher, with later bun feet, manufacturer's plaque, 65cm high, 106,5cm wide, 75,8cm deep; and a pair of stools, en suite (3)

R6 000 - 8 000

**PROVENANCE**

Pritchard & Co. was a department store operating in the late 19th and early 20th centuries in the Malaysian state of Penang.

This lot appears in photographs of Harcroft, Perak, during Charles and Muriel Rycroft's occupancy pre 1941



552



554



The entire contents of these rooms are included in lots 555 - 558.

**555**

### Kyoto Room

including: three Chinese pink and yellow glass ornamental flowering trees, 20th century, *in sizes*, each with beaded centres and green glass leaves, on a stylised root base, *the tallest 27,5cm high* (Qty)



555

**556**

### Bombay Room

including: an imbuia and upholstered lounge suite, 20th century, comprising: a pair of three-seater settees and four armchairs, each with arched padded back, arms and seat, on ball-and-claw feet, *loose seat cushion, distress*, each *settee 202cm long* (Qty)



556

This lot appears in photographs of Harcroft, Cape Town, during Charles and Muriel Rycroft's occupancy post 1951.

**557**

### Perak Room

including: a pair of imbuia mirrored chests-of-drawers, 20th century, each with arched plate between turned tapering supports surmounted by a finial, the rectangular-shaped top above four linenfold drawers, panelled sides, on claw-and-ball feet, *restorations*, *195cm high, 90,5cm wide, 53cm deep* (Qty)

557



**558**

### Shanghai Room

including: a part bedroom suite, 20th century, painted in shades of white and green, comprising: four shield-shaped and caned side chairs, three chests-of-drawers, a dressing table and stool, two cheval mirrors, a standing lamp, two mirrors, a pair of bedside cabinets and a side table, *one cheval mirror-plate detached*, *the chests-of-drawers 122cm high, 91,7cm wide, 53,5cm deep* (Qty)



558

This lot appears in photographs of Harcroft, Cape Town, during Charles and Muriel Rycroft's occupancy post 1951.