



The Vineyard Hotel, Newlands, Cape Town  
7 October – 1.30pm

## **Jewellery, English Silver and Furniture**

Lots 231–420

Lot 257 Victorian moonstone and ruby brooch



231

**231**  
**An Edwardian opal, enamel and seed-pearl pendant, 26 February 1907**

modelled with a pair of enameled dolphins decorated in shades of iridescent green, their mouth's with seed-pearl drops, flanking a collet-set oval cabochon-cut opal drop weighing approximately 6.00 carats, set with fine gold wire scroll motifs and a closed-back enamel pear-shaped drop pendant below, headed by a cabochon-cut opal, seed-pearl and openwork gold wire bale, the reverse engraved with the initials J.V.B. and J.C.W., with the date 26.2.07, the reverse compartment of the opal formerly glazed, length approximately 75mm

R40 000 - 45 000

233



232

**Pair of micromosaic and gold cuff-links**

circular with chain and T-bar connector, each inset to the centre with a beetle depicted in multi-coloured iridescent tesserae, enclosed by a foliate frame, diameter approximately 25mm (2)

R15 000 - 18 000

233

**Lady's platinum diamond and emerald dress watch, 1930s**

the hexagonal dial with arabic numerals, blued-steel hands, the bezel and shoulders millegrain-set with diamonds and calibr -cut emeralds, nickle-lever movement, *not in working order, the case engraved PLATINE, numerals 1800411, to a later green leather strap, length approximately 210mm, bezel diameter approximately 18mm*

R12 000 - 15 000



234



235

234

**An Edwardian peridot and seed-pearl pendant/brooch**

the openwork frame surmounted by three ribbon-tied bows set with seed-pearls, above a central cluster-shaped octagon-cut peridot weighing approximately 1.09 carats bordered by seed-pearls, two ribbons suspending an articulated scalloped frame accented with leaves set with seed-pearls and suspending a millegrain-set pear-shaped peridot drop, detachable bale, length approximately 63mm; and a fine 9ct gold chain, length approximately 455mm (2)

R6 000 - 8 000

235

**Edwardian gold, garnet and quartz crystal pendant, Murrele, Bennett & Co, 1896-1914**

the openwork oval frame united by seven graduated gold beads, accented with two collet-set garnets, suspending two faceted quartz crystal drops, oval suspension loop, the loop with maker's mark, length approximately 40mm, to a fine gold chain with bolt clasp, length approximately 470mm (2)

R4 000 - 6 000





237



236



238



239



239

236

**Enamel and seed-pearl  
novelty gold easel, probably  
French, late 19th century**

rectangular, the glazed compartment enclosing the traces of *verre églomisé*, enclosed by a leaf and berry border, with a black and blue enamel frame surround, to an openwork border of seed-pearls, hinged easel back support, surmounted by three hoop links and chains, *gold assay mark*, *height approximately 65mm*

R1 500 - 2 000

237

**Three-strand pearl and  
gold necklace**

the three graduated rows of pearls united by three foliate links, set with seed-pearls, to a gold clasp embellished with graduated pearls, *length approximately 360mm*; and a Victorian opal and diamond bar brooch, designed as two conjoined hearts, each set with a pear-shaped opal surrounded by old-cut diamonds and accented with a bow set with similarly-cut diamonds, *with later fittings, length approximately 65mm (2)*

R8 000 - 12 000

238

**Diamond brooch,  
19th century, probably  
Portuguese**

designed as a spray of flowers and foliage set with rose-cut diamonds mounted in pinched collets and closed back setting, *length approximately 35mm*

R4 000 - 6 000

239

**Diamond bar brooch,  
Maurice Massaux, Antwerp,  
late 19th century**

millegrain-set to the centre with a rose-cut diamond to a tapering bar set with rose-cut diamonds weighing approximately 2.00 carats, *French gold assay marks, length approximately 78mm, cased, Maurice Massaux, Anvers*

R6 000 - 8 000



240

**240  
Three-strand pearl and rhodolite  
garnet and diamond necklace**

the graduated three-strand freshwater pearl strands measuring approximately 6.0-6.5mm, to a clasp claw-set with an oval-cut rhodolite garnet weighing approximately 24,65 carats surrounded by thirty round brilliant-cut diamonds weighing approximately 0.45 carat and bordered by half pearls, *length approximately 370mm*

**R25 000 - 30 000**

**241  
Diamond cluster ring**

claw-set to the centre with a round brilliant-cut diamond weighing approximately 2.50-2.60 carats surrounded by round brilliant-cut diamonds to a part bifurcated shank, *size J*

**R140 000 - 150 000**



241



242

**242  
Swedish aquamarine and gold  
necklace, Holm & Hallgren,  
Stockholm, 18 March 1932**

composed of fifteen collet-set oval-cut aquamarine drops weighing approximately 12.00-12.5 carats suspended from a fancy-link gold chain, *length approximately 450mm, Swedish assay marks, case, HOLM & HALLGREN, JUVELERARE, 39 KUNGSGATAN 39, STOCKHOLM, the case stamped with the initials L.R. and the date 18 3 1932*

**R25 000 - 30 000**



243

**243  
Gold and gem-set heart-shaped  
locket/pendant**

the hinged engraved front set with two blue-sapphires and a ruby, enclosing two heart-shaped picture compartments, with suspension loop, *length approximately 40mm*

**R2 000 - 2 500**



244

**244  
A late Victorian silver and  
gold heart-shaped vesta case,  
Birmingham 1897**

the front engraved with diagonal scroll and foliate borders, the hinged cover with suspension loop, *5,5cm long, 36,5g*

**R1 500 - 2 000**



245

**245  
Lady's emerald and diamond  
dress watch, 1930s**

with 15 jewel nickle-lever movement the circular dial with arabic numerals, subsidiary seconds dial, the bezel millegrain-set with diamonds and U-shaped emeralds, to a platinum 'Milanese' link bracelet, *not in working order, length approximately 160mm, bezel diameter approximately 18mm*

**R12 000 - 15 000**

**246  
Diamond and white  
gold brooch**

designed as a ribbon-tied spray of flowers and foliage, set with eight-cut diamonds weighing approximately 0.50 carat, *length approximately 55mm*

**R6 000 - 8 000**



246



248

**247  
Diamond and gold  
cluster ring**

claw-set to the centre with a round brilliant-cut diamond weighing approximately 0.35 carat surrounded by ten round brilliant-cut diamonds, *size M*

**R6 000 - 8 000**

**248  
Pair of diamond and platinum  
earstuds**

each claw-set with a round brilliant-cut diamond weighing a total of approximately 4.36 carats, *post and butterfly fittings, length approximately 15mm (2)*

**R205 000 - 210 000**



247



249

**249  
Blue-sapphire and  
diamond ring**

claw-set to the centre with an oval-cut blue-sapphire weighing approximately 3.50-3.70 carats surrounded by round brilliant-cut diamonds, *size K*; a pair of blue-sapphire and diamond earrings, set with oval-cut blue-sapphires weighing a total of approximately 4.70 carats surrounded by round brilliant-cut diamonds, *post and butterfly fittings*; and a pair of blue-sapphire and cubic zirconia earrings, claw-set with oval-cut blue-sapphires weighing approximately 2.00 carats, *post and butterfly fittings (5)*

**R15 000 - 20 000**

250

**Ruby and gold brooch/  
pendant**

of pierced scrolling textured organic design accented with nine claw-set round-cut rubies weighing approximately 0.30 carat, with bale, length approximately 45mm

R5 000 - 7 000



251

**Single stone diamond ring**

claw-set to the centre with a round brilliant-cut diamond weighing 1.67 carats, size N½

*Accompanied by report number 1338124972 from the Gemological Institute of America stating that the diamond weighing 1.67 carats is J in colour and VVS1 in clarity*

R80 000 - 82 000

251



252

**Diamond and pearl brooch,  
maker's initials EJCo, London  
1986**

and a pair of earrings *en suite*, designed as floral clusters, the petals pavé-set with round brilliant-cut diamonds, each centre set with a cultured pearl, the earrings with buckle fittings, the brooch length approximately 37mm (3)

R12 000 - 14 000



253

**Pink topaz and gold  
cannetille necklace and  
pendant/brooch, 19th century**

the necklace designed as an articulated course of foiled oval and round-cut pink topaz in closed back settings, within borders of gold filigree flowers and tendril scroll wirework, set to a triple chain and oval clasp, length approximately 390mm; the pendant/brooch of cruciform, with a bale, *en suite*, length approximately 55mm; and a pair of associated topaz earrings, the foiled pear and round-cut topaz in closed back settings, altered, later post fittings, length approximately 25mm, cased (4)

R20 000 - 25 000



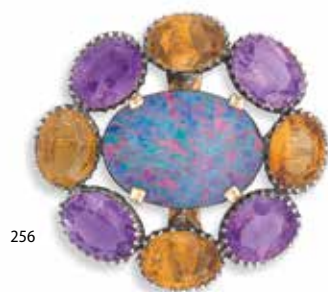
253





255

254



256



257



258

**254**  
**Amethyst and gold fringe necklace**

set with ten rope-twist and collet-set oval-faceted amethyst drops weighing approximately 55.00-60.00 carats, to a fine-link gold chain with bolt clasp, *length approximately 380mm*

**R12 000 - 15 000**

**255**  
**A Victorian amethyst and gold brooch**

collet- and claw-set with an oval-cut amethyst weighing approximately 20.00 carats, within a beaded wirework border, *length approximately 25mm*

**R1 500 - 2 000**

**256**  
**An Edwardian opal, amethyst and citrine brooch**

claw-set to the centre with an oval-cut opal doublet, to an openwork surround of alternating oval faceted citrines and amethysts weighing approximately a total of 25.00-28.00 carats, *width approximately 37mm*

**R12 000 - 15 000**

**257**  
**Victorian moonstone and ruby brooch**

circular, the openwork frame claw-set to the centre with five cabochon-cut moonstones highlighted with rubies set to knife-edge bars, surrounded by rose-cut diamonds, *diameter approximately 30mm, cased*

**R8 000 - 10 000**

**258**  
**French diamond and amethyst gold-mounted scent bottle, 19th century**

the spiral-twist glass body mounted with a conforming gold collar and hinged cover set with a faceted amethyst surrounded by rose-cut diamonds, *one diamond missing, lacking stopper, French assay marks, height approximately 70mm; cased*

**R6 000 - 8 000**

**259**  
**Victorian enamel and blister pearl stickpin**

collet-set with an oval blister pearl entwined with a gold and blue enamel serpent, *some damage to the enamel, length approximately 75mm*

**R3 000 - 4 000**



259





260



261



262



263



264



265

262

### **Diamond and synthetic spinel dress ring**

claw-set to the centre with an emerald-cut synthetic spinel weighing approximately 20.00-21.00 carats, to openwork shoulders and shank, accented by two old-cut diamonds, *size L½*

R10 000 - 15 000

263

### **Diamond dress ring**

claw-set to the centre with a rectangular emerald-cut diamond weighing approximately 1.15 carats surrounded by eight stepped baguette-cut diamonds and rectangular plaques set with eight-cut diamonds weighing approximately 2.00 carats, *to a curved shank fitted with a size adjuster, size K*

R62 000 - 65 000

264

### **Three-stone diamond ring**

claw-set to the centre with a princess-cut diamond weighing approximately 0.60 carat, flanked by a pair of princess-cut diamonds weighing approximately 0.31 carat, the shoulders set with twelve graduated round brilliant-cut diamonds, *size N*

R18 000 - 20 000

265

### **Russian silver-gilt and guilloche enamel card case, 88 standard, St Petersburg 1896-1908**

rectangular, enamelled in translucent blue over an engine-turned ground, the gold thumb-piece mounted with a cabochon-cut ruby, *inscribed with cyrillic letters, length approximately 90mm*

R6 000 - 8 000

260

### **Aquamarine and diamond pendant**

claw-set to the centre with a rectangular emerald-cut aquamarine weighing approximately 40.00 carats, two corners diagonally set with half-crescents, each collet-set with eight-cut diamonds weighing approximately 0.50 carat, accented with openwork entwined scrolls, *length approximately 30mm*

R15 000 - 20 000

261

### **Blue-sapphire, pearl and gold "Victory" brooch, circa 1945**

collet-set to the centre with a round-cut blue-sapphire, the hinged articulated bar-shaped arms box-collet-set with French-cut blue-sapphires alternating with seed pearls, *length approximately 79mm fully extended*

R5 000 - 7 000

266



266

### Diamond brooch/pendant

designed as a stylised star burst, set to the centre with a trillion-cut diamond weighing approximately 1.65 carats, set throughout with eight-, baguette-, briolette- and round brilliant-cut diamonds weighing a total of approximately 4.80 carats, length approximately 55mm

R35 000 - 40 000

267

### Ruby and diamond bracelet, 1960s

designed as articulated rows of eighty-one claw-set circular-cut rubies weighing approximately 5.25 carats highlighted by foliate diamond-set plaques millegrain-set with round brilliant-cut diamonds weighing approximately 1.05 carats, to a diamond-set clasp, length approximately 180mm

R60 000 - 65 000

268

### Pair of gentleman's diamond dress studs

claw-set with an old-cut diamond weighing approximately 0.60 carat in total, to a disc fitting, fitted case, Hamilton & Inches, 88, Princes Street, Edinburgh (2)

R8 000 - 10 000

267



268



269



269

### Ruby and diamond platinum cocktail ring

calibre-cut with diagonal bands of rubies with channel-set bands of graduated round-cut diamonds, size K

R8 000 - 10 000

270



270

### Three-stone diamond and platinum ring

claw-set to the centre with a round brilliant-cut diamond weighing approximately 1.50 carats, the shoulders set with two round brilliant-cut diamonds, size L½

R55 000 - 60 000

271

### Diamond brooch

designed as a spray of ribbons, set with round brilliant-cut diamonds weighing approximately 1.10-1.20 carats, length approximately 55mm

R10 000 - 12 000

271





272

**272**  
**Diamond and gold necklace,**  
**Doodles and Dunthorne, London,**  
**1996**

collet-set to the centre with a round brilliant-cut diamond weighing approximately 1.01 carats flanked by a pair of pear-shaped diamonds weighing approximately 0.54 carat in total, to an articulated fancy gold chain terminating in a barrel and hoop clasp, *engraved Boodles, 1.01, maker's mark B&D, London hallmark, length approximately 430mm*

**R70 000 - 75 000**

**273**  
**Pair of mabé pearl and**  
**diamond earrings**

each collet-set with a mabé pearl measuring approximately 14.30mm surrounded by round brilliant-cut diamonds weighing approximately a total of 1.65 carats, *post and buckle fittings, diameter approximately 22.5mm*; and a mabé pearl and 18ct gold ring, set to the centre with a mabé pearl measuring approximately 14.7mm to a textured bark surround and shank, *size K½ (3)*

**R20 000 - 22 000**



273



274

**274**  
**Diamond and gold bracelet**

composed as a series of articulated collet-set links, each set to the centre with thirty-one round brilliant-cut diamonds weighing approximately 4.00-4.20 carats, *length approximately 175mm*

**R30 000 - 32 000**

**275**  
**Pair of emerald and**  
**diamond earrings**

of heptagonal design, collet-set to the centre with a square-cut emerald weighing a total of approximately 1.46 carats, enhanced by eight channel-set princess-cut diamonds and surrounded by pavé-set round brilliant-cut diamonds weighing a total of approximately 1.44 carats, *post and buckle fittings, length approximately 25mm (2)*

**R20 000 - 22 000**



275

**276**  
**Tourmaline and diamond**  
**cocktail ring**

set to the centre with a rectangular green tourmaline weighing approximately 14.50 carats, accented on either side with a line of pavé-set round brilliant-cut diamonds, *size N½*

**R5 000 - 7 000**



276





277

277

**Lady's diamond and gold  
Bucherer wristwatch**

with nickel-lever 17-jewel movement, bi-metallic compensation balance, the circular enamel dial with roman numerals, the bezel claw-set with twenty-two round brilliant-cut diamonds weighing approximately 2.00-2.10 carats, to an integrated textured bracelet, with adjustable folding clasp, *signed, length approximately 157mm, diameter of bezel 25mm; cased*

**R35 000 - 40 000**

278

**Ruby and diamond dress ring**

claw-set to the front with a pear-shaped ruby weighing approximately 0.90 carat bordered by tapered baguette-cut and four round brilliant-cut diamonds weighing approximately 1.10 carats, *size L*

**R12 000 - 15 000**



278



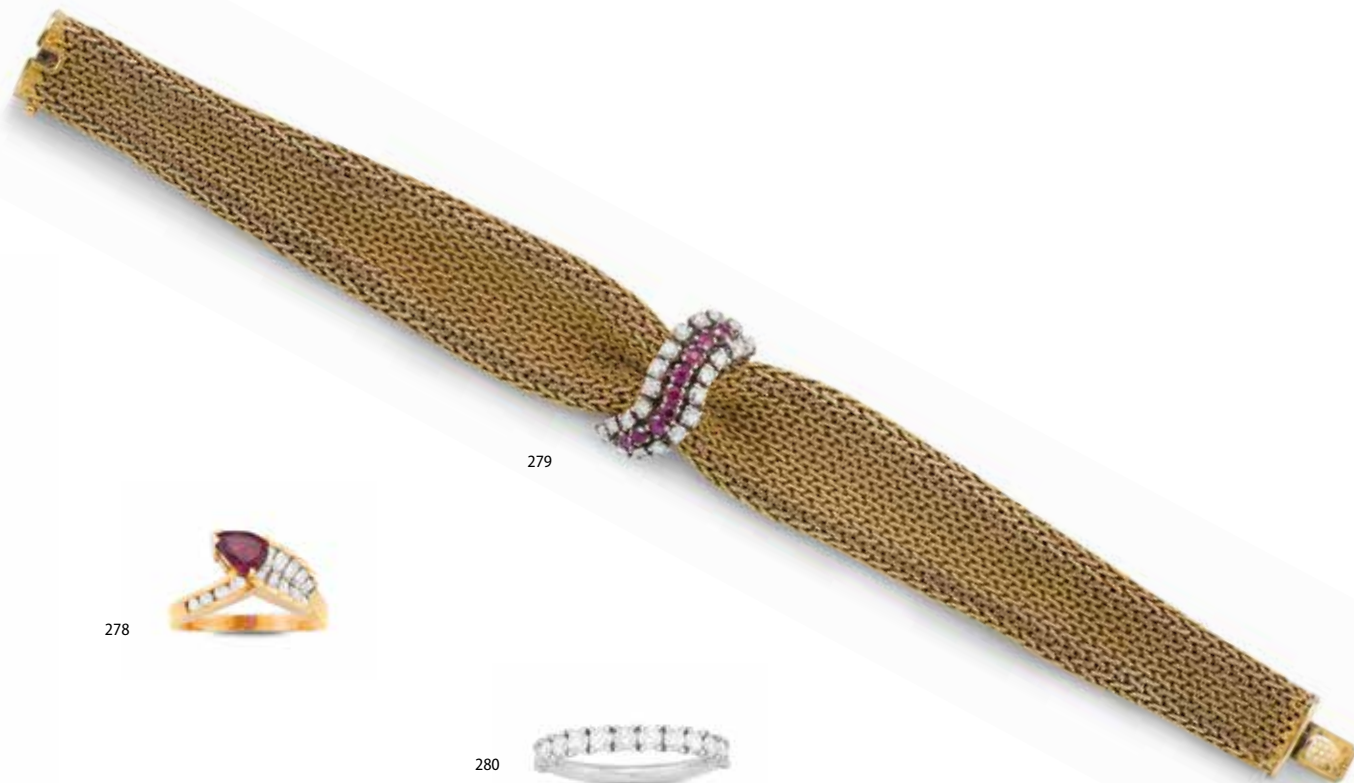
280

280

**Diamond half-eternity ring**

set to the front with thirteen round brilliant-cut diamonds weighing approximately 1.00 carat, *size N*

**R7 000 - 9 000**



279

279

**Ruby, diamond and gold  
bracelet, 1960s**

the tapering mesh bracelet heightened to the front with an s-shaped plaque, claw-set with round-cut rubies and round brilliant-cut diamonds weighing approximately 1.40 carats, *length approximately 190mm*

**R22 000 - 25 000**



281

281

**Ruby and diamond cluster ring**

a pendant and a pair of earrings *en suite*, each claw-set to the centre with round- and oval-cut rubies surrounded by round brilliant-cut diamonds weighing approximately 0.70 carat, *size 1½; and a fine 18ct box-link gold chain, 3,2g (5)*

**R15 000 - 20 000**

282

284

283

285

286

**282  
Strand of opera-length pearls**

composed of eighty-nine pearls measuring approximately 9.0-9.3mm, set with two 14ct white gold and diamond pierced bead-shaped clasps, each set with eight-cut diamonds weighing a total of approximately 0.60 carat, *length approximately 910mm*

**R12 000 - 15 000**

**283  
Blue-sapphire and diamond bracelet**

of foliate openwork design, each hinged plaque embellished with claw-set graduated oval-cut blue sapphires weighing approximately 12.00-13.00 carats, the leaves pavé-set with eight-cut diamonds weighing approximately 0.85 carat, to a herringbone bracelet and bolt clasp, *inner diameter approximately 150mm*

**R35 000 - 40 000**

**284  
Blue-sapphire and diamond dress ring**

of cluster design, centrally claw-set with an oval-faceted blue-sapphire to a stepped surround of round brilliant-cut diamonds, tapered baguette and marquise-cut diamonds weighing approximately 2.00-2.50 carats, to openwork shoulders and scrollwork, *size M½*

**R20 000 - 22 000**

**285  
Blue-sapphire and diamond brooch**

designed as a spray set with marquise-cut blue-sapphires weighing approximately 1.30-1.50 carats accented with ten round brilliant-cut diamonds weighing approximately 0.50 carat, *length approximately 43mm*

**R8 000 - 10 000**

**286  
Diamond and gold cluster ring**

claw-set with a marquise-cut diamond weighing approximately 1.60 carats surrounded by ten round brilliant-cut diamonds weighing approximately 1.00 carat, *size O*

**R40 000 - 45 000**



287

**287**  
**Three-strand cultured pearl and diamond necklace**

composed of three graduated rows of pearls measuring 6.00-8.00mm, to a foliate and ribbon diamond-set plaque and conforming clasp, set with eight-cut and round brilliant-cut diamonds weighing a total of approximately 2.90 carats, *an eight-cut deficient, length approximately 400mm*

**R8 000 - 10 000**

**288**  
**Diamond ring**

claw-set to the centre with an emerald-cut diamond weighing 4.70 carats, surrounded by six round brilliant-cut diamonds and thirty graduated baguette-cut diamonds weighing approximately 2.25 carats, *to a curved shank fitted with a size adjuster, size L½*

*Accompanied by certificate number 1206209309 from the Gemological Institute of America, stating that the diamond weighing 4.70 carats, is D in colour and VS2 in clarity.*

*Accompanied by a DTA report number 1206209309 stating that the 4.70 carats emerald-cut diamond described in the GIA Diamond Grading Report 1206209309 has been determined to be a type Ila diamond.*

**R1 300 000 - 1 400 000**

288



**289**  
**Diamond brooch**

designed as a spray of flowers, the central flowerhead set with a round brilliant-cut diamond weighing approximately 0.65 carat, the leaves, buds and ribbons set with eight-cut, baguette and round brilliant-cut diamonds weighing approximately 3.45 carats, *length approximately 50mm*

**R30 000 - 35 000**

**290**  
**Blue-sapphire and diamond dress ring**

centrally collet-set with an oval-cut blue-sapphire weighing approximately 2.20 carats, surrounded by tapering rows of pavé-set round brilliant-cut diamonds weighing approximately 4.00-4.50 carats, *size M½*

**R40 000 - 45 000**

290



289



**291**  
**Pair of diamond earrings**

each openwork spray set to the centre with a round brilliant-cut diamond weighing approximately 1.23 and 1.26 carats respectively, suspended with three marquise-cut diamond drops, surrounded by eight-cut and round brilliant-cut diamonds weighing approximately 3.75 carats, *post and buckle fittings (2)*

**R80 000 - 85 000**

291





292



293



294



296



292

### Emerald and diamond bangle, Boodles, London, 1994

hinged, the cross-over front claw-set with five round-cut emeralds weighing approximately 0.39 carat and nine round brilliant-cut diamonds weighing approximately 0.70 carat, *signed Boodles, maker's initials TT, London, hallmarks, inner diameter approximately 55mm*

R15 000 - 20 000

293

### Emerald and diamond dress ring, Boodles, London, 1991

the cross-over front claw-set with five round-cut emeralds weighing approximately 0.65 carat highlighted with ten round brilliant-cut diamonds weighing approximately 1.30 carats, to a tapering shank, *signed Boodles, maker's initials TT, London hallmarks, size M½*

R16 000 - 18 000

294

### Emerald and diamond gold bracelet

composed of a series of alternating collet and tube-lined links set with fifteen oval-cut emeralds and round brilliant-cut diamonds weighing approximately 1.50 carats, *length approximately 185mm*

R15 000 - 18 000

295

### Green diamond and gold ring

a pendant and a pair of earrings *en suite*, each collet-set to the centre with a round-cut green diamond surrounded by round brilliant-cut diamonds weighing in total approximately 1.54 carats, *size N½ (4)*

R18 000 - 24 000

296

### Single-stone diamond ring

set to the centre with a marquise-cut diamond weighing 1.0300 carats, *size M½*

*Accompanied by report number 110702652/76889 from EGL South Africa stating that the diamond weighing 1.03000 carats is F in colour and SI2 in clarity*

R30 000 - 35 000



298

297

### Diamond brooch

designed as a ribbon spray set throughout with round brilliant-cut, baguette and eight-cut diamonds weighing approximately 9.00 carats, length approximately 70mm

R80 000 - 82 000

298

### Double-strand pearl and diamond necklace

composed of two strands of cultured pearls measuring approximately 6.00-9.00mm to a leaf and ribbon diamond-set clasp, set with three old-cut diamonds weighing approximately 1.38 carats, accented with four round brilliant-cut diamonds weighing approximately 0.21 carat, the ribbons and leaves set with twenty-seven eight-cut diamonds, inner length of shorter strand 405mm

R8 000 - 10 000



297



299

299

### Pearl and diamond dress ring, 1970s

set to the centre with a cultured drop-shaped pearl measuring approximately 10mm within a border of collet-set round-cut diamonds weighing approximately 1.10 carats, size N

R8 000 - 10 000

300

### Diamond and carved jade brooch, 1930s

designed as a two-handled jardinière millegrain-set with eight-cut diamonds, issuing a carved jade spray of flowers, highlighted with a small diamond-set flowerhead, length approximately 48mm

R20 000 - 25 000



301

301

### Single-stone diamond ring

set to the centre with a pear-shaped diamond weighing 2.60 carats, size O½

*Accompanied by report number 3335347576 from Gemological Institute of America, stating that the diamond weighing 2.60 carats is F in colour and VVS1 in clarity*  
Stone illustrated

R240 000 - 250 000



300



302



302

### Emerald and diamond dress ring

collet-set to the centre with a cabochon-cut emerald set to a fan-shaped plaque pavé-set with rows of round brilliant-cut and old-cut diamonds, the shoulders set with further diamonds weighing a total of approximately 1.60 carats, size M½; and a diamond-set plaque, 1930s with articulated shoulders collet and pavé-set with old- and eight-cut diamonds weighing approximately 2.00-2.20 carats, with later post and butterfly fittings, length approximately 35mm (2)

R20 000 - 30 000



303

### 303 Diamond and gold bracelet

composed of a series of articulated bow-shaped links collet-set with round brilliant-cut and tapered baguette-cut diamonds, united by collet-set round brilliant-cut diamonds weighing approximately 3.50-4.00 carats, *length approximately 185mm*

R25 000 - 30 000



304

### 304 Diamond and gold bangle

composed of eleven plaques pavé-set with round brilliant-cut diamonds weighing 8.2 carats divided by lozenge-shaped polished links, *inscribed with the initials D.v.S. and 8.2kt, inner diameter approximately 60mm*

R85 000 - 90 000

### 305 Pink tourmaline and diamond dress ring

claw-set with an oval-cut pink tourmaline weighing approximately 10.00-10.50 carats to abstract openwork accented by round brilliant-cut diamonds weighing approximately 1.20-1.30 carats, *size N½*

R10 000 - 12 000



305



306

### 306 Pair of diamond and gold earrings, Boodles, London, 1997

almost square, the brushed gold enhanced with moulded channel-set round brilliant-cut diamonds weighing approximately 1.60 carats, *signed BOODLES, maker's mark B&D, London hallmark, buckle fittings, width approximately 15mm (2)*

R14 000 - 16 000

### 307 Diamond half-eternity ring

channel-set with nine graduated chequerboard-cut diamonds weighing approximately 1.02 carats, *size I½*

R12 000 - 15 000



307

### 308 Lady's 18ct yellow gold 'Oyster Perpetual Datejust' Rolex wristwatch, 1995

automatic lever movement, mono-metallic balance, adjusted to 5 positions and temperature, the circular metallic dial with applied gilt roman numerals, centre seconds, outer minute track, aperture for date at 3'o clock, reeded bezel, 18ct yellow gold Oyster case with screw-down crown and case-back, to an integral 18ct yellow gold Oyster bracelet, with fold-over clasp, *diameter of bezel 25mm, the case-back engraved D.v.S. 3 April 95, with Rolex original certificate No X952510, extra gold bracelet links, with red leather Rolex wallets and suede wallet cover*

R45 000 - 50 000



308





309

309

### **Diamond and gold ring**

designed by Guy Triest, the domed fluted front accented with four tapering spiral flutes set with thirty-four graduated eight-cut and old-cut diamonds weighing approximately 1.20 -1.30 carats, *to a curved shank fitted with a size adjuster, size K*; and a pair of diamond and gold earrings, each set with four rows of pavé-set graduated round brilliant-cut diamonds weighing approximately 1.80 carats, *length approximately 25mm (3)*

R28 000 - 30 000



310

310

### **Diamond and gold ring**

channel-set to the front with four princess-cut diamonds, the shoulders pavé-set with round brilliant-cut diamonds to a textured bead-ground weighing approximately 1.82 carats, *engraved with the initials D.v.S and 1.82ct, size N½*

R20 000 - 25 000

311

### **Coral and diamond heart-shaped pendant/brooch**

the stylised openwork rope-twist heart-shaped frame accented by three round brilliant-cut diamonds, a spray of pavé-set round brilliant-cut diamonds and four graduated coral beads, to a hinged bale, *length approximately 40mm*

R10 000 - 12 000

\*This lot is not suitable for export



311

312

### **18ct gold chain**

composed of a series of belcher links, *length approximately 700mm*

R28 000 - 32 000

313

### **Gentleman's stainless steel and 18ct gold Oyster Perpetual 'Datejust' Rolex wristwatch, Ref. 431, circa 2004**

automatic calibre 1570 nickel lever movement, the gilt dial with applied baton indexes, magnified date aperture at 3 o'clock, to an integral stainless steel and 18ct gold Oyster bracelet with Rolex folding clasp, *diameter of bezel approximately 35mm, with presentation case, accompanied by Rolex certificate Number K743755 dated 24 April 2004, instruction pamphlet and leather wallet*

R35 000 - 40 000



313



312



314

315



316



317



314

### 18ct gold necklace

composed of textured rod and herringbone links, to a box clasp, *distortions, inner circumference approximately 460mm*

R30 000 - 35 000

315

### Diamond and gold dress ring

the domed textured front claw-set with a round brilliant-cut diamond weighing approximately 1.80-1.85 carats, accented with five claw-set eight-cut diamonds and two graduated crescents set with eight-cut diamonds weighing approximately a total of 0.35 carat, *to a curved shank fitted with a size adjuster, size K½*

R50 000 - 52 000

316

### Chatham 'emerald' and diamond ring

of textured organic design centring an 'emerald' highlighted with seven eight-cut diamonds, *size M*

R9 000 - 12 000

317

### Lady's 18ct yellow gold Movado wristwatch

the seventeen jewel manual winding nickle lever movement adjusted to two positions, the square matt gilt dial applied with alternating black and gilt baton markers, beaded bezel, to a textured linked bracelet, with folding clasp, *length approximately 172mm, width of bezel approximately 24mm*

R20 000 - 25 000



318

**318  
Pair of ruby and gold earrings**

designed as a flowerhead, accented with graduated round-cut rubies weighing approximately 2.90 carats, *post and buckle fittings (2)*

**R10 000 - 12 000**

319

**319  
Turquoise, ruby, blue-sapphire and diamond necklace**

composed of graduated textured gold links, fifteen links accented to the front with cabochon-cut turquoise, round rubies, blue-sapphires and round brilliant-cut diamonds, *length approximately 460mm*

**R60 000 - 65 000**

320

**320  
Diamond pendant**

claw-set with a natural, fancy intense orange-yellow oval brilliant-cut diamond weighing 0.44 carat, to a bale, *length approximately 10mm*

*Accompanied by report number 6207368226 from Gemological Institute of America, stating that the diamond weighing 0.44 carat is natural fancy intense orange-yellow even in colour and I<sup>1</sup> in clarity*

**R9 000 - 12 000**





321



323



324



322

321

### **Charm bracelet**

the 9ct gold curb-link bracelet with heart-shaped padlock, suspending various charms including a poodle, a Chinese character, a fish, a map of Africa, a sphinx, a Turkish slipper, a lion, a book, a train, an Eskimo and a disk engraved with the Star of David, *inner diameter approximately 195mm*

R20 000 - 22 000

322

### **Charm bracelet**

the 9ct gold curb-link bracelet with heart-shaped padlock suspending various charms including three monkeys, a bell, a ship liner, a matador, a pineapple, a harp, a turtle, a horse and rider, a maple leaf, an evil eye, a jewelled slot machine, a map of Brazil, and an abacus, *inner diameter approximately 175mm*

R20 000 - 22 000

323

### **Diamond ring**

collet-set to the centre with a round brilliant-cut diamond weighing approximately 2.15 carats, *size M*

R115 000 - 120 000

324

### Amber necklace

composed of twenty-eight graduated beads of honey-tone, *length approximately 490mm*

R4 000 - 6 000

325

### Diamond and gold bangle

double hinged, pavé-set to the front with fifty-five round brilliant-cut diamonds weighing approximately 3.00 carats, *inner circumference approximately 50mm*

R25 000 - 30 000

326

### Pair of diamond and gold bangles

hinged oval, the front of each line-set with five round brilliant-cut diamonds weighing a total of approximately 0.40 carat, *inner circumference approximately 55mm (2)*

R18 000 - 20 000

327

### Pair of diamond earrings

each curbed yellow and white gold frame tube-set to the centre with a round brilliant-cut diamond weighing approximately 1.25 and 1.10 carats respectively, *post and butterfly fittings (2)*

R55 000 - 60 000

328

### Italian Latin gold and lapis lazuli cross

the brushed-gold arms and stem with cabochon-cut lapis lazuli terminals, to a hinged bale, *length approximately 60mm*

R4 000 - 6 000

329

### Blue-sapphire and diamond ring

the tapering band with rope-twist borders and collet-set to the front with a cabochon-cut blue-sapphire, between textured lattice shoulders accented with four round brilliant-cut diamonds, *size L½*

R15 000 - 20 000

325



326



327



328



329





**330**  
**Silver necklace, Stuart Devlin, London, 1977**

composed of a series of elongated textured links, *length approximately 830mm*

R8 000 - 10 000

**331**  
**Multi-coloured gemset bracelet**

composed of articulated square-links set with amethysts, aquamarines, garnets, citrines, topaz, peridots and tourmalines, weighing approximately 20.00-22.00 carats, *length approximately 170mm*

R8 000 - 10 000

**332**  
**Diamond pendant**

claw-set with a natural fancy yellow cut-cornered rectangular modified brilliant-cut diamond weighing 1.47 carats, to a bale, *length approximately 10mm*

*Accompanied by report number 2201368173 from Gemological Institute of America, stating that the diamond weighing 1.47 carats is natural fancy yellow even in colour and l<sup>i</sup> in clarity*

R30 000 - 35 000

**333**  
**Green tourmaline and diamond ring, Charles Greig**

collet-set to the centre with an oval-cut green tourmaline weighing approximately 1.60 carats, surrounded by channel-set round brilliant-cut diamonds, *size K½*

R6 000 - 8 000

**334**  
**Stuart Devlin 'Frog and Flowers' parcel-gilt and enamel novelty 'Surprise' egg, London, 1975**

the two-tone textured and spun gold body enclosing three enamel blooms and a jade frog, to a moulded rocky base, Limited Edition No. 36/100, *the enamel flowerheads with enamel loss, gilding rubbed in areas, height approximately 70mm*

R4 000 - 6 000





335



336



337



338



339

335

### Amethyst and garnet gold pendant/necklace, 1970s

the pendant designed as an abstract face, the eyes set with garnets and the mouth with a square-cut amethyst, to a bale and articulated fancy link, later lobster clasp, length approximately 415mm

R10 000 - 12 000

336

### Diamond and gold ring, 1970s

set with textured rectangular tubes accented by ten round brilliant-cut diamonds weighing approximately 0.80 carat, size O½

R15 000 - 18 000

337

### Green-tourmaline and gold ring, 1970s

designed as textured stepped rectangular lozenges highlighted with three rectangular and square-cut green tourmalines, size M

R9 000 - 12 000

338

### Diamond pendant

claw-set with a natural fancy yellow cut-cornered rectangular modified brilliant-cut diamond weighing 1.25 carats, to a bale, length approximately 10mm

Accompanied by report number 1206368181 from Gemological Institute of America, stating that the diamond weighing 1.25 carats is natural fancy intense yellow even in colour and SI¹ in clarity

R26 000 - 28 000

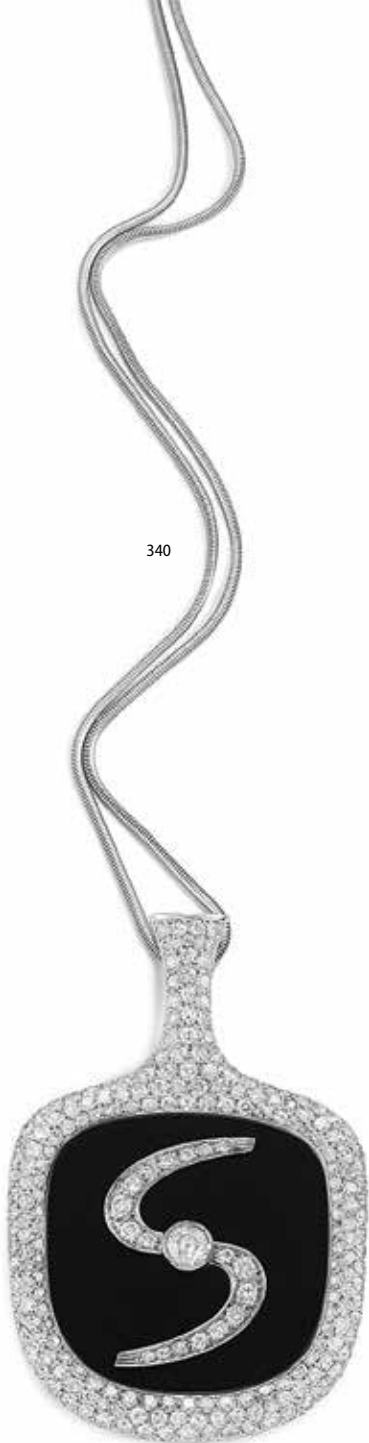
339

### Ruby and diamond ring

set to the front with an abstract geometric textured openwork design accented by an oval-cut ruby weighing approximately 1.00 carat and three round brilliant-cut diamonds weighing approximately 0.90-0.95 carat, size O½

R12 000 - 15 000





340

340

### **Diamond and onyx pendant**

paddle-shaped, centred by a polished black onyx plaque diamond-set with the initial S, the centre tube-lined with an old-cut diamond weighing approximately 0.74 carat and bordered by pavé-set eight- and round-cut diamonds weighing approximately 0.56 carat, the neck and outer rim pavé-set with graduated eight-cut diamonds weighing approximately 6.25 carats, *length approximately 68mm*; with an Italian 14ct white gold chain, composed of snake-links, *length approximately 430mm (2)*

**R30 000 - 35 000**

341

### **Opal and diamond ring**

designed by Friedmann Schmuck, Zurich, of geometric form, set with a kite-shaped opal flanked by a tube-set round brilliant-cut diamond to a square-shaped shank, *size M½*

**R15 000 - 20 000**



341



342

342

### **Three-stone diamond ring**

set with a rectangular baguette diamond weighing approximately 1.30-1.40 carats, the textured shoulders heightened with two baguette-cut diamonds, *size K½*

**R30 000 - 35 000**

343

### **Diamond eternity ring**

channel-set with princess-cut diamonds weighing approximately 3.80-3.90 carats, *size N*

**R30 000 - 32 000**



343



344

344

### **Gentleman's stainless steel 'Oyster Perpetual Datejust' Rolex wristwatch, 1976**

automatic nickle lever movement, mono-metallic compensation balance adjusted to 5 positions and temperature, case number 3949164, the circular cream dial with roman numerals, centre seconds, outer minute track, magnified aperture for date at 3 o'clock, steel luminous hands and lume plots, reeded bezel, screw-down crown and case back, with stainless steel Rolex bracelet and flip-lock clasp, *diameter of bezel 36mm, the case back engraved G.v.S. Dec 1976, accompanied by Rolex certificate, No. 3949164, dated 26.12.76, additional dial*

**R45 000 - 50 000**

345



346



347



348



349



345

### Three-strand pearl and diamond necklace

designed as three graduated rows of grey-blue tint semi-baroque pearls measuring approximately 8.5mm, set to an 18ct white gold clasp enhanced with baguette, eight-cut and round brilliant-cut diamonds centred by a pearl of dark grey tint, *inner strand length approximately 400mm*

R20 000 - 22 000

346

### Pair of diamond earrings

each tube-set with a brilliant-cut diamond surmounted by a smaller round brilliant-cut diamond weighing approximately a total of 1.25-1.30 carats, *hoop and hinged fitting, length approximately 20mm (2)*

R8 000 - 10 000

347

### Synthetic spinel and silver ring

claw-set with an emerald-cut synthetic spinel, weighing approximately 11.00-11.50 carats, *to a curved shank fitted with a size adjuster, size J*

R2 000 - 3 000

348

### Columbian emerald and blue-sapphire dress ring

claw-set with a square-cut emerald weighing approximately 8.50-8.80 carats, the shoulders channel-set with tapering calibre-cut blue-sapphires, *size L½*

R12 000 - 15 000

349

### Opal and diamond ring

claw-set with a cabochon-cut opal weighing approximately 5.50 carats to an openwork wirework mount surmounted with rosettes accented with round brilliant-cut diamonds, *to a wirework shank, size N½*

R8 000 - 10 000



350

351



352



353

354



355



**350**  
**18ct yellow gold open-faced pocket watch, International Watch Company, Schaffhausen Ref. 3001, circa 1973**

quartz electronic, the circular gilt dial applied with black enamel hour and minute batons, black enamel hands, subsidiary date aperture at 3 o'clock, the case back engraved 1994136 and 3.3.1973, diameter of bezel approximately 50mm, with presentation case and suede case

R20 000 - 30 000

**351**  
**Single-stone diamond ring**  
claw-set to the centre with a round brilliant-cut diamond weighing 0.83 carat, size O½

*Accompanied by report number 2131682574 from the Gemological Institute of America, stating that the diamond weighing 0.83 carat is I in colour and VS² in clarity*

R20 000 - 22 000

**352**  
**Pair of blue-sapphire and gold cufflinks**  
stirrup-shaped, channel-set with square calibré-cut blue-sapphires weighing approximately 4.90 carats, each connecting hinged rod with calibré-cut blue-sapphire terminals, engraved with initials G.v.S., length approximately 20mm (2)

R20 000 - 25 000

**353**  
**Pair of Swedish gold, mother-of-pearl and blue-sapphire cuff-links, 1936**  
circular, each designed as a disc of mother-of-pearl set to the centre by a millegrain-set cabochon-cut blue-sapphire, length approximately 28mm, Swedish assay marks, date mark K8, and maker's marks, cased, the silk-lined case inscribed A.B. Lam. Pettersson Kgl. Hofjuvelerare, Linköping (2)

R5 000 - 7 000

**354**  
**Diamond and gold ring**  
the dished circular centre pavé-set with round brilliant-cut diamonds weighing approximately 1.15-1.20 carats, size R½

R12 000 - 15 000

**355**  
**9ct gold cigar cutter, S.J. Rose & Son, Birmingham 1981**  
rectangular, the engine-turned body with suspension loop, length approximately 60mm; fitted to a 15ct gold chain, with curbed links, swivel fitting and T-bar toggle, length approximately 340mm (2)

R7 000 - 9 000



356



356

**Gentleman's 18ct yellow gold 'Calatrava' Patek Philippe wristwatch, Ref. 3588/001, circa 1977**

with calibre 2855 manual winding thirty-six jewel damascened nickel lever movement no 128114, circular gilt dial with black roman numerals, with hob nail bezel, to an integrated textured bracelet, with Patek Philippe adjustable folding clasp, *the strap and dial signed, the case back engraved G.v.S. Dec 1977, length approximately 192mm, diameter of bezel 35mm, with original Patek Philippe certificate, 13 Jan 1978*

**R80 000 - 90 000**

357



357

**18ct gold open face keyless lever pocket watch, Baume & Co, AB, London 1902**

the gilt lever movement numbered 13138, with bi-metallic compensation balance, the three-quarter plate engraved *Baume & Co, London made. Holders of the Record at the Royal Observatory, Kew, Manufactured for H.F. Seale, Cape Town*, the gold cuvette engraved *Presented to H.R. Ga\*\*\* by his Monastery Friends as a token of appreciation on his birthday, Sept. 18th 1902*, the enamel dial inscribed H.F. SEALE, with black roman numerals and outer five minute divisions, subsidiary seconds dial, blued-steel hands, diameter approximately 47mm

**R15 000 - 20 000**

358



358

**18ct gold open face keyless lever pocket watch, A. Lange & Söhne, Glashütte, B/Dresden, circa 1903**

with anchor movement numbered 44177, bi-metallic compensation balance, the gold cuvette engraved *Max Lürman 29 März 1903*, enamel dial with roman hour and arabic minute numerals and markers, subsidiary seconds dial, the engraved case with engraved initials within a circular cartouche, *replaced glass, diameter of bezel approximately 50mm*

**R45 000 - 50 000**

359

**18ct yellow and white gold necklace**

composed of rope-twist links intertwined with a fine flat curbed-link chain, *length approximately 900mm*

**R45 000 - 50 000**

359







**360**  
**18ct gold bracelet, 1970s**  
 composed of chevron part-textured links, *length approximately 195mm*  
**R30 000 - 32 000**

**361**  
**18ct gold and Half Kruger coin bracelet, 1982-1985**  
 each coin collet-set and united by oval links, *length approximately 210mm*  
**R70 000 - 80 000**

**362**  
**Diamond and platinum ring**  
 claw-set with a princess-cut diamond weighing 0.77 carat to a tapering shank, *size K*; and a diamond and platinum half-eternity ring, channel-set with eleven princess-cut diamonds weighing approximately 0.90 carat, *size K (2)*  
*Accompanied by report number 60801582 from EGL certificate stating that the diamond weighing 0.7700 carat is J in colour and VS1 in clarity*  
**R22 000 - 24 000**

**363**  
**Gold and diamond pendant**  
 set to the centre with a gold Republic Rand coin surrounded by eighteen round brilliant-cut diamonds weighing approximately 1.50 carats, to a diamond-set bale, *stamped 885, this pendant is a Limited Edition Pendant, No. 885 specially crafted for a member of the Diners Club, length approximately 38mm, cased*  
**R10 000 - 12 000**

**364**  
**Diamond and platinum eternity ring**  
 claw-set with baguette-cut diamonds weighing approximately 2.50 carats, *the shank fitted with a size adjuster, size N½*  
**R20 000 - 22 000**



365

**365**  
**Lady's 18ct yellow gold**  
**'Montre Mini Tank' Cartier**  
**wristwatch, Ref. 2443, 1990s**

rectangular with quartz movement, the cream dial with black roman numerals, secret signature at X, blued-steel hands, blue-sapphire cabochon set winding crown, back secured by four screws, leather Cartier strap with 18ct gold Cartier buckle, *dial, case and movement signed LX 83545, length approximately 200mm, width of bezel approximately 29mm, with presentation case and booklet*

**R30 000 - 35 000**



366

**366**  
**Lady's 18ct white gold**  
**'Tank Americaine' Cartier**  
**wristwatch, Ref. 1713**

quartz movement, curved rectangular with cream dial, black roman numerals, black inner minute track with five minute markers, secret signature at VII, blued-steel sword hands, brushed and polished rectangular back case secured by four screws, facet-cut blue-sapphire crown, black crocodile Cartier strap with 18ct gold Cartier buckle, *signed dial, back and movement, CC409148, strap length approximately 210mm, bezel width approximately 18mm, with presentation case*

**R25 000 - 30 000**



367

**367**  
**Gentleman's stainless steel**  
**'Tank Divan' Cartier**  
**wristwatch, Ref. 2600**

self-winding nickel plated 20 jewel movement, water-resistant, numbered 107055CE, the rectangular silvered dial with black roman numerals and minute markers, secret signature at VII, blued-steel hands, polished case secured by eight screws, facet-cut blue-sapphire crown, black crocodile Cartier strap with steel Cartier buckle, *length of strap approximately 210mm, bezel width approximately 38mm wide, with presentation case and certificate, service booklet and instruction booklet*

**R20 000 - 30 000**



368

**368**  
**Gentleman's 18ct yellow gold**  
**'Calatrava' Patek Philippe**  
**wristwatch**

Cal.315/290 automatic nickel lever movement No 3402470 stamped with the Geneva seal, 29 jewels, free-sprung Gyromax balance, adjusted to heat, cold, isochronism and 5 positions, 18ct gold rotor, the circular cream dial with applied faceted square baton markers and outer dot minute markers, polished *dauphine* hands, centre seconds hand, date aperture at 3 o'clock, brushed and polished gilt surround, screw down exhibition back, angular down-turned lugs, brown leather Patek Philippe strap, *engraved 750, PPCo, and assay marks, gold Patek Philippe buckle, the case, dial and movement signed, length of strap 230mm, diameter of bezel 40mm*

**R120 000 - 130 000**



369

369

**A pair of cast George II silver candlesticks, John Cafe, London, 1751**

each on a shaped circular spreading base, chased with scrolls, fluting and quilting, rising to a knopped baluster stem with conforming decoration and spool-form socket with removable quilted nozzles, the bases engraved with initials, *splits, dents, holes*, 25cm high, 1675g all in (2)

**R25 000 - 30 000**

**PROVENANCE**

Purchased from Templar's (Pty) Ltd, Benmore Gardens, Sandton, 16 January 1979.



371

371

**A George III silver chamberstick, Elizabeth Cooke, London, 1768**

the shaped base engraved with a crest, gadrooned border, the side applied with a leaf-capped handle, centred by a pierced central support with drip-pan, detachable cone-shaped extinguisher with conforming engraving, raised on three outswept shell feet, *repair, minor dents*, 11cm high, 265g all in

**R2 500 - 3 000**

**PROVENANCE**

Purchased from Mary Cooke Antiques, 1 Barnes Hill Street, London, SW13, 22 September 1978.



370

373

**A set of sixteen George III 'Old English Bead' pattern silver dinner spoons, Hester Bateman, London, 1778**

each terminal engraved with a crest, 1105g all in; and a cased set of six George IV silver 'Old English' pattern teaspoons, William Bateman II, London, 1829, each terminal engraved with the initials *AHM* within an oval stippled engraved cartouche, *retailed by COLLINGWOOD, 46 Conduit St, W1, 65g all in (22)*

**R8 000 - 10 000**

**PROVENANCE**

Sold: Stephan Welz & Company, in Association with Sotheby's, The Kynnersley House sale, Johannesburg, 12 October 1988, lot 84 (the sixteen George III 'Old English Bead' pattern silver dinner spoons, Hester Bateman, London, 1778).

Purchased from Presents Co. Ltd., 75 & 76 Oliver Plunkett Street, Cork, 17 July 1979 (a cased set of six George IV silver 'Old English' pattern teaspoons, William Bateman II, London, 1829).

370

**A George II silver sauceboat, John Swift, London, 1763**

the helmet-shaped body with gadrooned rim, the side applied with a leaf-capped scroll handle, the body engraved with an armorial, on a conforming spreading foot, *repair*, 14,2cm high, 505g; and a George III silver sauceboat, John Hawkins, London, possibly 1817, similar, *dent*, 16cm high, 555g (2)

**R10 000 - 12 000**

**PROVENANCE**

Purchased from Adams Antiques (Pty) Ltd, 97 Harrison Street, Johannesburg, 27 July 1979.

372

**A George III silver inkstand, Burrage Davenport, London, 1777**

the pierced oval frame with beaded borders centred by three conforming pierced bottle holders with an associated ink pot, waiver pot and pounce pot, the tray engraved with initials, raised on four claw-and-ball feet, *dents, chips, the waiver, pounce and ink pot mounts unmarked*, the stand 19,7cm long, 745g all in (4)

**R5 000 - 7 000**

**PROVENANCE**

Sold: Sotheby's Parke Bernet, South Africa (Pty) Ltd, Johannesburg, 17 March 1978, lot 334.



373

374

**A George III silver two-handled sauce tureen and cover, Hester Bateman, London, 1786**

boat-shaped, the body engraved with a crest to one side, beaded rim, the sides applied with reeded and foliate hoop-shaped handles, on a conforming oval base, the cover surmounted by a beaded urn-shaped finial, *scratch weights 13 = 15, split, dent, 24cm wide over handles, 420g*

**R7 000 - 9 000**

**PROVENANCE**

Purchased from Templar's (Pty) Ltd, Benmore Gardens, Sandton, 8 November 1978.



374

375

**A George III silver cake basket, possibly Joseph Scammell, London, 1789**

the oval pierced body with vacant cartouches united by flowerhead swags, with wavy reeded rim applied with a reeded conforming swing-handle, raised on a reeded rim foot pierced with pales, the base with initial, *split, maker's mark rubbed, surface scratches, 28,7cm wide over handle, 880g*

**R9 000 - 12 000**

**PROVENANCE**

Purchased from Garrard & Company, London, 16 February 1968.



375

376

**A George III silver oval tray, Elizabeth Jones, London, 1791**

oval, the centre engraved with an armorial, the cavetto engraved with a feathered border interspersed with flowerheads, reeded rim, on four triangular outswept legs terminating in stylised ball feet, *repairs, minor dent, splits, 41,2cm wide, 1260g*

**R8 000 - 10 000**



376

377

**A pair of George III silver salts, Paul Storr, London, 1793**

urn-shaped, each gadrooned body applied with lion-mask-and-ring handles, raised on an oval stepped foot, gilt interior, *scratch weight 6"7 & 47, dents, 10,8cm wide over handles, 230g all in (2)*

**R4 000 - 6 000**

**PROVENANCE**

Purchased from Mary Cooke Antiques, 1 Barnes Hill Street, London, SW13, 22 September 1978.



377



378

**A George III silver teapot, The Batemans, London, 1794**

the hinged cover engraved with bright-cut decoration surmounted by an oval ivory finial, the side applied with a *later* wooden scroll handle, the body and shoulders with further bright-cut borders, the front engraved with a navette-shaped cartouche and the reverse similarly engraved with a vacant cartouche with initials, on an oval-shaped reeded base, *dents*, 15cm high, 385g; and a George III silver stand, Peter & Ann Bateman, London, 1791, navette-shaped, engraved with bright-cut foliate decoration, with reeded rim, raised on four fluted outswept feet, *dent*, repair, 18,8cm wide, 145g (2)

**R15 000 - 20 000**

\*This lot is not suitable for export



378

379

**A George III assembled silver coffee set, Peter & Ann Bateman, London, 1794-1799**

the urn-shaped coffee pot with bands of bright-cut decoration interspersed with rondels of flowerheads and sprays of flowers, engraved with initials below, the hinged cover surmounted by a ball finial, the side applied with a *later* wooden handle terminating in an acanthus leaf, on a spreading stepped circular foot, reeded bands throughout, 32,5cm high; the stand similarly engraved, raised on three fluted outswept paw feet, 15cm diameter; the sugar basket navette-shaped, similarly engraved, the sides applied with a reeded swing-handle, on a conforming spreading oval foot, 16,5cm wide; a George III silver milk jug, maker's mark rubbed, London, 1799, the oval body similarly engraved, the side applied with a reeded handle, 11,4cm high, 165g; and two pairs of George III silver sugar tongs, Peter, Ann & William Bateman, London, 1803, 14,5cm long, *scratch weights* 4-23-18 and *appears to be* 59 4, marks worn, minor dents and restorations, 1335g all in (6)

**R35 000 - 40 000**

**PROVENANCE**

Purchased from Templar's (Pty) Ltd, Benmore Gardens, Sandton, 28 June 1978.

380

**A George III silver-gilt chalice, Henry Chawner, London, 1794**

the bowl with gilt interior, on a tapering stem, raised on a conforming circular foot with reeded border, on a square base, *scratches to the interior*, 16,1cm high, 290g

**R4 000 - 6 000**

**PROVENANCE**

Purchased from Dag Saboya escritório de arte, Rio de Janeiro, Brasil, 13 July 1988.



379

381

**Three George III silver-gilt salts, maker's mark indistinct, London, 1796**

each of navette shape with scrolled ends and gadrooned borders, engraved with a crest, gilt interior, on a conforming stepped oval base, *some pitting, split, dents*, 11,8cm wide, 420g all in; and a George IV silver-gilt salt, Daniel Smith & Robert Sharpe, London, 1784, similar, 11,8cm wide, 145g (4)

**R4 000 - 6 000**

**PROVENANCE**

Purchased from Bentley Antiques, 41 Church Street, Cape Town, 17 December 1985.



380



381

382

**Four George III silver-gilt dishes, Robert Hennell I & David Hennell II, London, 1800**

each circular with reeded rim, *minor oxidization, re-gilded, 10,4cm wide, 265g all in (4)*

**R4 000 - 6 000**

**PROVENANCE**

Sold: Sotheby's Parke Bernet, South Africa, Johannesburg (Pty) Ltd, 10 November 1978, lot 219.



382

383

**A George III silver and cut-glass cruet set, The Batemans, London, 1804**

the navette-shaped frame engraved with a foliate band enclosing two cartouches, one engraved with the initial 'T', raised on outswept scroll feet, with central carrying-handle and division collar, fitted with two glass condiment bottles, a mustard pot and two glass casters, each with silver collars, *damage to the stand, later wing nut, chips, loss, 27cm high, 1356,7g all in*; and a George III silver 'Old English' pattern mustard spoon, John Lias, London, 1808, *11,9g (7)*

**R12 000 - 15 000**

**PROVENANCE**

Purchased from C. T. Gilmer late of Mallett & Son, 16 Old Bond Street, Bath, 12 September 1968.



383

384

**A pair of George III silver wine coasters, Thomas Holland II, London, 1805**

the moulded sides with scrolling foliage and flowerheads, with moulded leaf rim and turned wooden base, *marks rubbed, minor dents to one rim, Spink & Son Ltd paper label, 14,3cm diameter (2)*

**R15 000 - 20 000**

**PROVENANCE**

Purchased from Spink & Son Ltd, 5, 6 & 7 King Street, St. James's, London, SW1, 10 November 1981.



384

385

**A pair of George III silver dinner plates, Paul Storr, London, 1807**

circular, each with gadrooned wavy rim interspersed with acanthus leaves and ovolu motifs, the reeded border centred by a crest, *scratches, 25,5cm diameter, 1495g all in (2)*

**R15 000 - 20 000**

**PROVENANCE**

Purchased from Mary Cooke Antiques, 1 Barnes Hill Street, London, SW13, 22 September 1978.



385



386



387



388

386

**A pair of George III silver entrée dishes and covers, Joseph Angell I, London, 1818**

each oval shaped body with moulded acanthus-leaf and flowerhead borders, the conforming cover surmounted by a foliate and flowerhead-shaped handle, each cover and base engraved with three armorials, dents, scratches, 33,3cm wide, 4410g all in (2)

**R25 000 - 30 000**

**PROVENANCE**

Purchased from Gold Shop, 65 Bloor St West, Toronto, Ontario, Canada, 14 November 1978.

387

**A William IV silver snuff box, Nathaniel Mills, Birmingham, 1833**

rectangular, the reeded body with a hinged stepped cover moulded with flowerheads, scrolls and foliage against a hammered ground enclosing a vacant cartouche, with reeded sides and base, gilt interior, minor pitting, 8,5cm wide, 130g

**R7 000 - 9 000**

388

**A set of six Victorian silver-gilt shell butter dishes, Charles Fox II, London, 1837**

each of scalloped outline with scrolled thumbpiece engraved with a crest, raised on three whelk feet, gilt interior, 12cm wide, 670g all in (6)

**R6 000 - 8 000**

**PROVENANCE**

Purchased from Templar's (Pty) Ltd, Benmore Gardens, Sandton, 11 December 1978.



389

**A pair of Sheffield plated wine coolers, 19th century**

urn-shaped, each with gadrooned rim and beaded borders, the front engraved with an armorial, the sides applied with outswept handles terminating in lion masks, raised on a stepped and gadrooned foot, with detachable rim and liner, *dents*, 25cm high (2)

R12 000 - 15 000



391

391

**A Victorian silver-gilt basket, Charles Johnston Hill retailed by Asprey & Co, London, 1891, with Austro-Hungarian import marks, 1891-1901**

oval, with moulded c-scroll rim, the body with pierced latticework sides, moulded in relief with foliate swags headed by flower- and ram's heads, a lion-mask-and-ring handle to each side, raised on foliate headed scroll legs, *stamped ASPREY. LONDON*, 296, 23,2cm wide, 520g

R5 000 - 7 000



390

390

**A Victorian silver-mounted table mirror, William Comyns & Sons, London, 1887**

the shaped bevelled plate within a moulded gadrooned arched frame headed by an oval vacant cartouche, with baluster-shaped easel back support carved with hearts, *restoration*, 63cm high

R5 000 - 7 000



392

**A Victorian silver four-piece tea service, Atkin Brothers, Sheffield, 1896**

comprising: a hot water pot, a teapot, a two-handled sugar bowl and a milk jug, each with indented corners, the body engraved with initials enclosed within foliate swags, flowerheads and scrolling foliage, the shoulders similarly engraved, the sides applied with a harp-shaped handle, the covers surmounted by an engraved finial, on a conforming spreading foot, *splits, dents, stamped Reg No. 114771 and 114772, the hot water pot 23,1cm high, 1895g all in (4)*

**R15 000 - 20 000**

\*This lot is not suitable for export



392

393

**A Victorian assembled five-piece silver tea service, William Gibson & John Lawrence Langman retailed by Goldsmiths and Silversmiths Co, London, 1898-1899**

comprising: a teapot, a hot water pot, a kettle-on-stand, a two-handled sugar bowl and a milk jug, each moulded in relief with c-scroll vacant cartouches to one side and engraved with initials to the other, enclosed by foliage and flowerheads, the sides applied with leaf-capped scroll handles, the spout with masks terminating in a bird's head, the cover surmounted by an eagle-shaped finial, raised on pierced, scrolled and beaded bracket feet, the kettle-on-stand with conforming stand, *dents, stamped 1504 Goldsmiths & Silversmiths Company, 112 Regent St, London, W5 and 6, the kettle-on-stand 36cm high, dents, 3715g all in (5)*

**R25 000 - 30 000**

\*This lot is not suitable for export

**PROVENANCE**

Presentation to Sir Frederick de Waal, First Admiral of the Cape. Previously owned by Lady Catherine de Waal.



393



394

394

**A pair of Victorian silver-mounted and cut-glass scent bottles, retailed by Flavelle Brothers Ltd, Sydney & London, Chester, 1899**

cased, each globular body moulded and cut with six oval cartouches enclosing stylised flowerheads and printies, the hinged covers engraved with initials, enclosing a glass stopper, star-cut base, *minor chips and dents*, signed 'FLAVELLE', 14cm high, the maroon leather presentation case with retailer's name, inscribed with the letters 'MFLW', 19cm high (2)

R5 000 - 7 000

395

**An Edward VII silver salver, Lambert & Co (Herbert Charles Lambert), London, 1904**

circular, with moulded reeded wavy border, raised on three scroll legs, *minor dents*, 36cm diameter, 1550g

R9 000 - 12 000

396

**A George V silver two-handled tray, Sheffield, William Hutton & Sons Ltd, 1913**

rectangular, with gadrooned rim interspersed with shells and acanthus leaves, the sides applied with conforming handles, *oxidisation*, 69cm wide over handles, 3570g

R20 000 - 25 000

**PROVENANCE**

Purchased from Templar's (Pty) Ltd, Benmore Gardens, Sandton, 11 February 1978.

397

**A George V four-piece silver tea service, Amy Sandheim, London, 1926**

comprising: a hot water jug, a teapot, a sugar bowl and a milk jug, each applied with a braided and rope-twist border against a beaten ground, the hot water jug and teapot applied with a harp-shaped wooden handle, the hinged cover surmounted by a wooden urn-shaped finial, the milk jug with harp-shaped silver handle headed by a thumbpiece, *dents*, engraved *Amy Sandheim*, 755, the hot water jug 23cm high, 1405g all in (4)

R20 000 - 25 000





398

398

**Three pairs of silver-mounted tot measures, Goldsmiths & Silversmiths Co Ltd, Hukin & Heath Ltd, RR, London & Birmingham, 1928 - 1937**

each silver hinged cover with thumbpiece, on a tapering glass body applied with a loop handle, star-cut base, with detachable 'Whiskey' label, *chips, one label associated, 11cm high, 905g all in (12)*

R6 000 - 8 000

399

**A George V silver two-handled tray, Cooper Brothers & Sons Ltd, Sheffield, 1931**

oval, with moulded wavy rim, the sides applied with shaped carrying handles, *stamped to the reverse 'S1512 P', 54,5cm wide over handles, 1525g*

R9 000 - 12 000



399

400

**A George V silver rose bowl, Mappin & Webb Ltd, Sheffield, 1932**

the circular body with lappet border, pierced wavy rim joined by foliate trellis work, on a spreading circular petal-shaped pierced foot, *stamped Mappin & Webb Ltd, Sheffield & London to the reverse, 21,7cm diameter, 600g*

R5 000 - 7 000



400



401

**An Elizabeth II silver  
'Sandringham' pattern  
flatware service, Viner's Ltd,  
Sheffield, 1952-1957**

comprising: twelve fish forks, twelve fish knives, twelve soup spoons, twelve dinner forks, twelve dinner knives, twelve dessert knives, twelve fruit forks, twelve fruit knives, twelve dessert spoons, twelve dessert forks, twelve ice cream spoons, three serving spoons, twelve coffee spoons, a soup ladle, six serving spoons, three sauce ladles, two butter knives, a pair of fish servers, two carving knives, *in sizes*, two carving forks, a steel and sixteen teaspoons, *7510g all in*; and a mahogany cabinet, mid 20th century, the rectangular moulded serpentine top above three graduating fitted drawers, raised on leaf-headed cabriole legs, *age-related wear, scratches*, 85cm high, 76cm wide, 51,5cm deep (183)

**R35 000 - 40 000**

**PROVENANCE**

Purchased from Glatman & Lander Ltd, 15, 17 & 19 New Brown Street, Manchester, 4, 11 August 1955.

401



402

**An Elizabeth II 'King's'  
pattern silver flatware service,  
E P & Co, Sheffield, 1963**

comprising: twelve soup spoons, twelve dinner forks, twelve dinner knives, twelve dessert knives, twelve dessert spoons, twelve dessert forks, six fruit knives, six fruit forks and a pair of butter knives, *3310g all in*; six electroplated fish knives and forks, Sheffield, 20th century; and a mahogany canteen, mid 20th century, the hinged moulded rectangular top enclosing a fitted baize-lined interior with a fitted frieze drawer below, the front with brass carrying handle, 17cm high, 47,5cm wide, 34,5cm deep (99)

**R30 000 - 35 000**

402





403

403

**A George III style carved mahogany silver table, 19th century**

the rectangular top with a pierced fretwork gallery, the blind 'Chinese' fretwork frieze with ribbon-carved beading, on four pierced fretwork square-section legs, headed by carved pierced angle brackets, joined by a scrolled pierced conforming stretcher surmounted by an urn finial, on block supports with brass castors, *repair, restoration, chips, retailer's plaque Frank Partridge, Works of Art, 26 King St. St. James's and New York, 77cm high, 84,5cm wide, 50,6cm deep*

**R15 000 - 20 000**



404

404

**A George IV giltwood convex mirror**

carved with an eagle perched on a rocky outcrop above a foliate cresting, the convex plate enclosed by an ebonised wood slip with a rope and oak-leaf surround, the lower section with leaf and scroll cresting, *some damage and repairs, 113cm high, 70cm wide*

**R8 000 - 10 000**

405

**A George III giltwood tripod torchère**

the circular fluted bowl carved with a key-fret border above a scroll band, with pendant pineapple knop, supported on three foliate-carved tapering legs headed by rams' heads with garlands of flowers in their mouths, their horns united by foliate swags, raised on paw feet united by a circular platform, on a moulded triangular stepped based with block feet, *restorations, repairs, 119cm high*

**R12 000 - 15 000**

**PROVENANCE**

De Goede Hoop Estate, Noordhoek, Cape Town.



405

406

**A George III mahogany  
secrétaire bookcase,  
19th century**

the outset cornice with a dentil  
frieze above a pair of astragal glazed  
doors enclosing three adjustable  
shelves, the fall-front fitted with  
a red leather writing surface, an  
arrangement of eight pigeon holes,  
four small drawers and a cupboard  
with satinwood interior, above three  
graduated drawers, on bracket feet,  
*damage to the moulding, 202cm high,  
89cm deep, 54,5cm deep*

**R20 000 - 25 000**

**PROVENANCE**

De Goede Hoop Estate, Noordhoek,  
Cape Town.

407

**A George III brass-bound  
mahogany peat bucket**

the tapering sides applied with a pair  
of brass bands, with carrying-handle,  
*44cm high, 37cm diameter; with later  
tin liner*

**R10 000 - 12 000**

**PROVENANCE**

De Goede Hoop Estate, Noordhoek,  
Cape Town.

408

**A George III brass-bound  
mahogany plate bucket**

of cylindrical coopered form,  
bound with two brass bands, with  
a brass carrying-handle, *43cm high,  
36,5cm diameter; with later  
two-handled tin liner*

**R10 000 - 12 000**

**PROVENANCE**

De Goede Hoop Estate, Noordhoek,  
Cape Town.



406



407



408

409

**A George III mahogany card table, 19th century**

in the Chippendale manner, the rectangular top with ovolo border enclosing a baize-lined playing surface, profusely carved with foliage, on square-section canted legs with brass castors, 72,5cm high, 91cm wide, 44,5cm deep

R10 000 - 15 000

409



410

**A George II style mahogany shepherd's crook armchair**

with shaped closenailed leather-upholstered back and stuff-over seat, with shepherd's crook arms, raised on acanthus-leaf-carved cabriole legs with bun feet, *restorations, cracks*

R4 000 - 6 000

410



**PROVENANCE**

Purchased from Adams Antiques (Pty) Ltd, 97 Harrison Street, Johannesburg, 14 February 1983.

411

**A Regency rosewood-veneered writing table**

the rectangular top inset with a gilt-tooled green leather writing surface, a pair of frieze drawers below, on rectangular supports, on outswept legs with brass paw feet and brass castors, *stringing throughout, restorations, repair*, 72cm high, 99cm wide, 58cm deep

R10 000 - 12 000

\*This lot is not suitable for export

**PROVENANCE**

Purchased from David Porter Antiques, Cape Town, 25 March 1997.

411





412

**A pair of Victorian rosewood card tables**

each moulded rectangular hinged top enclosing a baize-lined playing surface above a foliate-carved frieze, on an octagonal faceted baluster column, on a stepped circular socle and moulded base, raised on three paw feet with castors, *cracks, veneer loss*, 76,5cm high, 92cm wide, 46cm deep (2)

R12 000 - 15 000

\*This lot is not suitable for export



412



413

**A nest of three Regency style simulated and painted rosewood and mahogany tables, 19th/20th century**

*in sizes*, each with rectangular top raised on turned tapering double bamboo style supports, raised on bracket feet united by a back stretcher, *the tallest with crack, applied Sotheby's paper label 496, the tallest 72,5cm high, 48cm wide, 43,5cm deep* (3)

R6 000 - 8 000

**PROVENANCE**

Purchased from David Porter Antiques, Cape Town, 9 February 1995.



413

414

**An Edwardian mahogany and satinwood marquetry inlaid travelling games and tantalus**

the hinged cover centred by a shell patera with conforming inlaid corners, enclosing a mirrored back, fitted with three decanters engraved Baccarat, France, a cribbage board, a fitted tray and a secret compartment, a fitted drawer below, the sides applied with carrying handles, on a stepped plinth base, *minor chip to one stopper, stringing throughout, Bramah London lock*, the box 37cm high, 40cm wide, 30cm deep

R6 000 - 8 000

**PROVENANCE**

Purchased from Templar's (Pty) Ltd, Benmore Gardens, Sandton, 11 February 1978.



414

415-420

**No Lots**