



The Vineyard Hotel, Newlands, Cape Town

18 March – 10am

**Chinese and Japanese Ceramics and
Works of Art including
The Dr JR and Mary Strong Collection**

Lots 1–170

Lot 53 A Chinese pale celadon jade carving of a 'magnolia' vase, Qing Dynasty, late 18th/early 19th century

The Dr JR and Mary Strong Collection

John Strong was born on 22 March 1909 in Middlesex, England. Educated at St Aloysius College in Highgate, London, he displayed scholastic excellence obtaining overall first place in the Royal College of Preceptors Examinations when he was thirteen.

It was inevitable that he should matriculate at a very young age, which he did with honours, aged fifteen. Being so young he was precluded from commencing his medical studies at the University of London until he was sufficiently mature. He duly completed his undergraduate B.Sc. aged seventeen. On qualifying as a medical doctor he practiced at St Bartholomew's Hospital in London and went on to qualify as a surgeon at the world-renowned Edinburgh University Medical School, completing this course of study in two years instead of the usual four!

Among many hopeful candidates, Dr Strong was selected by the Discovery Committee in London for the position of ship's surgeon aboard the Royal Research Ship, Discovery II, in her voyage of exploration to the South Pole from 1935 to 1937. This particular expedition was involved in a daring rescue of the American explorer Ellsworth on Antarctica. He was in a small reconnaissance party who were themselves marooned and given up for dead while carrying out new survey work among unexplored islands in the Antarctic region.

In 1938 Dr Strong moved to the then Southern Rhodesia to take up the post of Medical Officer of the Rhodesian Railways. A keen runner he was selected as the manager of the Rhodesian athletics team at the 1960 Rome Olympics.

He was also an accomplished mountaineer and had scaled Kilimanjaro



and the Matterhorn.

After retiring from medical practice John entered politics as a senator in the former Rhodesian parliament. However, he and Mary embraced a new life when they moved to South Africa in 1977. Both

enjoyed outdoor activities such as hiking, and diminutive Mary took up martial arts, obtaining a black belt in karate.

Dr Strong had married Mary, who was originally from Ireland, on 7 December 1963. A qualified state registered nurse

and midwife from the United Kingdom, she had travelled to Africa with a sense of adventure and disembarked in Cape Town. She then travelled on to Bulawayo where the two were to meet. She was the perfect companion and assisted him during the ensuing years with his collection.

Dr Strong's fertile mind and phenomenal memory spawned collecting interests in many areas of the decorative arts, including fine English glass, Chinese ceramics, jade and snuff bottles. He was particularly interested in Japanese netsuke, English silver and Persian carpets. He was also a keen philatelist and was winner of several exhibition awards, including the State President's trophy for Best Philatelic Exhibit in the South African Philatelic Exhibition of 1977.

To quote from an interview which appeared in the *Chronicle* newspaper on 22 October 1974:

'Senator Strong is philosophical about the collector's urge that takes up so much of his time but gives so much pleasure. "It is a trait you either have or you don't and one that provides great satisfaction whatever means you have to indulge it."'

He was an active correspondent with fellow collectors and was well acquainted with London's illustrious dealerships – Spink and Son, Stanley Gibbons and the Fine Art Society. He also maintained correspondence with the artists such as Sir William Russell Flint, who began his career as a medical illustrator, the acclaimed marine artist, John Stobart, and was also on friendly terms with the South African artist, Sydney Carter.

Upon his death, his widow, Mary, dedicated her life to the care of this collection which is now being offered for sale.





1

**1
A Chinese Longquan celadon-glazed bowl, Song Dynasty**

the rounded sides rising to a lightly moulded incurved rim with flared lip, covered in a crackle-ware glaze of sea-green tone, raised on a buff-coloured foot, 10,4 cm diameter

R7 000 – 9 000



2

**2
A Chinese Longquan celadon-glazed bowl, Song Dynasty**

the lobed body raised on an unglazed circular foot, 4,6 cm high

R6 000 – 8 000



3

**3
A Chinese Longquan celadon-glazed jarlette, Song/Yuan Dynasty**

the ribbed bulbous body raised on an unglazed circular foot, *restorations*, 6,9 cm high

R4 000 – 6 000



4

**4
A small Chinese white glazed dish**

the shallow round sides rising to an everted unglazed rim from a short straight foot, the interior carved with a lively water buffalo walking with its head raised amongst tufts of grass, covered with creamy slightly crackled glaze, 15,6 cm diameter

R20 000 – 30 000



5



6



7



8



5
A pair of Chinese Dehua
libation cups, Qing Dynasty,
17th/18th century

the body moulded with dragons,
deer, birds and a *Qilin*, raised on a
circular foot, with wavy rim, *chips to*
the rim, 6,2 cm high (2)

R8 000 – 10 000

6
A Chinese 'clair de lune'
blue-glazed miniature bottle
vase, Qing Dynasty, 18th/19th
century

the compressed ovoid body raised
on a low circular foot, *underglaze-blue*
double-ring mark, 8,9 cm high

R8 000 – 10 000

7
A Chinese copper-red splash
miniature bottle vase,
Qing Dynasty, 18th century

the compressed bulbous body and
elongated neck, *underglaze-blue*
double-ring mark, 8,3 cm high

R8 000 – 10 000

8
A Chinese 'mirror black'
glazed miniature vase,
Qianlong period, 1735-1796

the baluster body with everted rim,
raised on a low circular foot, 9,1 cm
high; a Chinese copper-red glazed
miniature bottle vase, Qing Dynasty,
19th century, the ovoid body raised
on a low circular foot, *underglaze-blue*
double-ring mark, 8,9 cm high; and a
Chinese apple-green crackle-glazed
miniature vase, Qing Dynasty, 19th
century, the tapering ovoid body
with shortened neck, 8,5 cm high (3)

R9 000 – 12 000

9

A Chinese mottled yellow and grey-glazed miniature bottle vase, Qing Dynasty, 19th century

the rim and foot in an iron-brown glaze, 6,4 cm high; a Chinese lemon-yellow glazed miniature vase, Qing Dynasty, 19th century, the ovoid body with green-glazed rim, 6 cm high; and a copper-red glazed double gourd, miniature bottle vase, 19th century, 6,4 cm high (3)

R6 000 – 8 000



10

A Chinese iron and black lustre glazed vase, Meiping, Qing Dynasty, 18th/19th century

the rounded shoulders rising to a short slightly everted rim, unglazed base, 17,5 cm high

R6 000 – 8 000

9

10

11

A Chinese flambé-glazed water pot, Qing Dynasty, late 19th century

the bulbous body suffused with an oxblood-red glaze heightened with lavender streaks, chips to the foot, 6 cm high; and a Chinese 'Lotus' water pot, late Qing Dynasty, the rounded sides applied with brown-glazed sprig moulded scrolling lotus on a cream craquelure ground, 5,2 cm high (2)

R4 000 – 6 000



11



12

A Chinese powder-blue-glazed saucer-dish, Qing Dynasty, 18th/19th century

the front and reverse with stippled-blue glaze, the rim with simulated 'bronze' band border, apocryphal six-character Xuande underglaze-blue double-ring mark, 21,4 cm diameter

R10 000 – 15 000



12

13

A Chinese celadon moulded dish, Qing Dynasty, 19th century

the body sprig moulded with butterflies and flowerheads, with wavy rim, raised on a circular unglazed foot, apocryphal underglaze-blue six-character Qianlong mark, 16,2 cm diameter

R3 000 – 4 000



13

14

A Chinese 'robin's egg' blue-glazed vase, Qing Dynasty, 19th century

the baluster body rising to a tall cylindrical neck and everted rim, 18 cm high

R9 000 – 12 000



14

15

A Chinese cobalt-blue glazed bottle vase, Qing Dynasty, 19th century

the ovoid body with elongated neck, *apocryphal underglaze-blue six-character Qianlong mark*, 16,8 cm high; and a Chinese green and crackle-glazed bottle vase, Daoguang period, 1821-1850, the compressed bulbous body with elongated neck, raised on an outswept circular foot, 12 cm high (2)

R8 000 – 10 000



15



16

A Chinese yellow-ground green-enamelled 'dragon' bowl, Guangxu marks and period, 1875-1908

the exterior incised and enamelled with a pair of dragons chasing 'flaming pearls'; the interior with an incised green circle and *Shou* character, *six character mark in underglaze-blue*, 6,5 cm high

R12 000 – 15 000



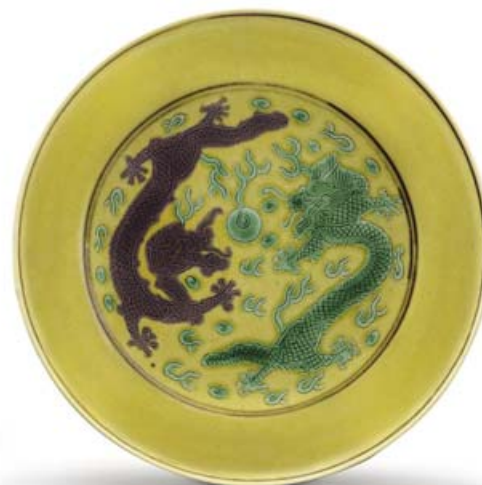
16

17

A pair of yellow-ground, aubergine and green-enamelled 'dragon' saucer dishes, Guangxu marks and period, 1875-1908

the interior of each centre enamelled with a pair of dragons chasing 'flaming pearls' within a double-line aubergine border, the exterior with sprays of berries, *enamelled six character mark*, 13 cm diameter (2)

R15 000 – 20 000



17



18

18
A Chinese Jian 'hare's fur' tea bowl,
Song Dynasty, 12th/13th century
 the tapering sides rising to a slightly everted rim,
 covered in a black iron-rich glaze, with brown streaks
 to the interior and exterior, the glaze stopping short
 of the foot, *firing faults and chip to the foot*, 6,7 cm high
R10 000 – 12 000



19

19
A blue and white 'Swatow' Zhangzhou
dish, 17th century
 the centre painted with a stylised flower enclosed
 by triple blue-line borders, meandering flowers and
 foliage, the reverse with a zig-zag border, *rim chips*,
 34,5 cm diameter
R6 000 – 8 000



20

20
A Chinese blue and white 'Phoenix-tail'
vase, Qing Dynasty, Kangxi period,
1662-1722
 the baluster body with trumpet shaped neck,
 painted with shaped panels enclosing floral and
 figural landscape vignettes, the waist moulded and
 painted with a chevron-patterned border, the flared
 rim similarly decorated *firing faults, chips*, 48,5 cm high
R20 000 – 30 000



22

21
A Chinese blue and white jar,
Qing Dynasty, Kangxi period, 1662-1722
 the ovoid body decorated with four leaf-shaped
 panels with scholars' attributes, pagodas and a
 courtier before a walled garden, enclosed by
 double sprays of flowers between foliate and blue-
 line borders, *underglaze-blue double-ring mark*,
 25,5 cm high
R12 000 – 15 000



23

22
A Chinese powder-blue-ground and gilt
bowl, Qing Dynasty, late 18th/early
19th century
 the tapering sides painted with peonies, prunus
 and rocky outcrops in gilt to a powder-blue-ground,
 the centre enamelled in shades of pink, green and
 orange with gourds and flowerheads enclosed by
 scrolling foliage, *chips, stylised underglaze-blue six-*
character mark, 9,8 cm high
R8 000 – 10 000

23
A Chinese Export 'Imari' cuspidor,
Qing Dynasty, 18th century
 the bulbous body painted with peonies, bamboo
 and Buddhist emblems between a double blue-line
 border, the flared lip with scrolling foliage and
 flowerheads, sienna-glazed rim, the side applied with
 a scroll handle painted with stylised foliage, *restored*,
 11,2 cm high
R7 000 – 9 000



24



25



26



27



28

24
A Chinese Export famille-rose plate, Qing Dynasty, Qianlong period, 1736-1795

the centre loosely painted with sprays of blooms, the cavetto with a puce painted line- and chain border, the rim painted with swags of flowers, buds and foliate gilt border, 23 cm diameter

R6 000 – 8 000

PROVENANCE

Dr Bothma Butendag.

LITERATURE

C.S. Woodward (1974) *Oriental Ceramics at the Cape of Good Hope 1652-1795*, Cape Town, A.A. Balkema. Illustrated in black and white on page 42 number 64. Discussed on page 45.

25
A Chinese Export famille-rose dish, Qing Dynasty, Qianlong period, 1736-1795

the centre enamelled with sprays of chrysanthemums, peonies and blossom before a balustrade with rocky outcrops and a bird, the rim similarly decorated with three floral sprays, with iron-red and gilt spear-head border, sienna-glazed rim, 38,8 cm diameter

R7 000 – 9 000

26
A pair of Chinese Export blue and white tankards, Qing Dynasty, Qianlong period, late 18th century

each ovoid body moulded with basketweave enclosing five medallions painted with pavilions and figures before riverscapes, the rims painted with cell-diaper borders, the side applied with a twin-strap handle, 11,8 cm high (2)

R8 000 – 10 000

27
A set of ten Chinese Export blue and white dishes, Qing Dynasty, Qianlong period, 1735-1796

each centre loosely painted with vases issuing peonies, chrysanthemums, pomegranates and foliage, the cavetto with cell-diaper border, the rim with further sprays of flowers, *fritting chips, firing faults*, 22,5 cm diameter (10)

R14 000 – 16 000

28
A Chinese blue and white dish, Qing Dynasty, 18th century

of lobed oval form, the centre painted with retreats and figures before a riverscape, the cavetto with stylised foliate and cell-diaper borders, sienna-glazed rim, *minor firing faults*, 30,6 cm wide

R6 000 – 8 000

PROVENANCE

Boschendal, Franschoek, painted 'BH 117', Vergelegen, Somerset West.

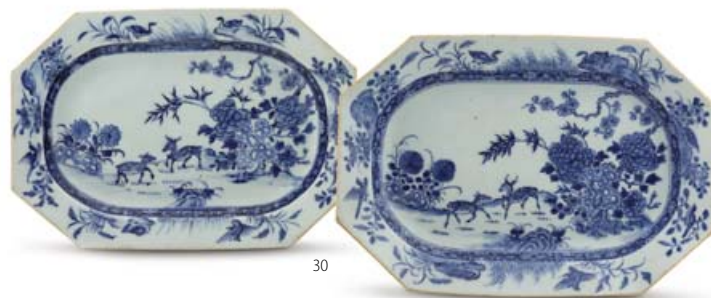


29

29
A Chinese Export blue and white dish, Qing Dynasty, 18th century

rectangular with canted corners, the centre painted with sprays of lilies, peonies and foliage, the cavetto with cell-diaper border, the rim with foliate and diaper border, the reverse with rectangular unglazed panel, *fritting chips*, 38 cm wide

R6 000 – 8 000



30

30
A pair of Chinese Export blue and white octagonal dishes, Qing Dynasty, late 18th/early 19th century

the centre of each painted with deer, rocky outcrops, blossoms, bamboo and peonies enclosed by a foliate band, the rim decorated with birds and foliage, sienna-glazed rim, *minor chips*, 27,5 cm wide (2)

R12 000 – 15 000



32

32
A Chinese Export blue and white rectangular dish, Qing Dynasty, 18th century

with canted corners, the centre painted with a balustraded garden, two birds amongst rocky outcrops and foliage, the cavetto with a spear-head border, the rim with sprays of flowers enclosed by a cell-diaper border, 36 cm wide

R4 000 – 6 000



33

33
A Chinese Export blue and white octagonal dish, Qing Dynasty, 18th century

the centre painted with buildings and pavilions within walls before a mountainscape, the foreground with sampans, the cavetto with a flowerhead border, the rim with butterflies, peonies and foliage, 35,5 cm wide; another, rectangular with wavy rim, the centre painted with sprays of flowers, the cavetto with cell-diaper border, the rim with foliate and lappet border, *fritting chips*, 26,5 cm wide (2)

R8 000 – 10 000

31
A Chinese Export blue and white oval dish, Qing Dynasty, 18th century

the everted wavy rim, painted with figures on a bridge before a walled pavilion and dwellings before a rocky land and waterscape, with sampans in the distance, the rim with cell-diaper border, 25,5 cm wide; and another, similar, the centre painted with a musician and his companion in a boat before a pavilion with pine trees, the cavetto and rim with cell-diaper borders, sienna-glazed border, 25,5 cm wide (2)

R7 000 – 9 000



34

34
A pair of Chinese Export blue and white dishes, Qing Dynasty, 18th century

each circular with lobed rim, the centre painted with pavilions before rocky outcrops, bridges and a riverscape, enclosed by a cell-diaper border, the rim with foliate, scroll and cell-and-diaper border with alternating butterflies and key-fret motifs, raised on a circular foot, *chips*, 24,4 cm diameter (2)

R3 000 – 4 000



35

35
A Chinese Export blue and white oval dish, Qing Dynasty, 18th/19th century

the centre painted with pavilions and pagodas before rocky outcrops in a riverscape, the foreground painted with a figure on a bridge, the cavetto and rim with cell-diaper and spearhead borders, 30 cm wide; and another, 19th century, the wavy oval body painted with pagodas and a riverscape, the cavetto and rim with wave and blue-dash borders, 26,5 cm wide (2)

R6 000 – 8 000



36

36
A Chinese Export blue and white rectangular dish, Qing Dynasty, 18th/19th century

with canted corners, the centre painted with a pavilion before a walled garden, surrounded by a riverscape with further small boat houses and rocky outcrops, the rim with cell-diaper and blue-dash borders, 31,2 cm wide; and another example, similar but smaller, 27,5 cm wide (2)

R7 000 – 9 000



38

37
A Chinese Export blue and white rectangular dish, Qing Dynasty, 18th/19th century

with wavy rim, the centre painted with pavilions, pine trees and rocky outcrops before a riverscape, the foreground with figures on a bridge, the rim with cell-diaper, ruyi-head and butterfly border, *fritting chips*, *firing faults to the reverse*, 43 cm wide

R6 000 – 8 000



37

38
A Chinese Export blue and white rectangular dish, Qing Dynasty, 18th/19th century

with canted corners, the centre painted with a temple in the foreground, dwellings and a boat house in the distance before a riverscape with rocky outcrops, the cavetto and rim with cell-diaper and spearhead borders, *fritting chips*, 41 cm wide

R6 000 – 8 000

39

A Chinese blue and white bowl, Guangxu mark and period, 1875-1908

the rounded sides rising to a slightly everted rim, painted with sprays of foliage, chrysanthemums and peonies between blue-line borders, *underglaze-blue six-character mark*, 19,3 cm diameter

R7 000 – 9 000



39

40

A Chinese blue and white jardinière, Qing Dynasty, late 19th century

the heavily potted rounded sides painted with a pair of dragons amongst peonies, chrysanthemums and foliage between lappet and *ruyi*-head bands, the everted rim with prunus flowerheads, *hairline crack to base*, 25 cm high

R8 000 – 10 000



41

41

A large Chinese underglaze-blue and copper-red glazed bottle vase, Qing Dynasty, late 19th/early 20th century

the ovoid body decorated with three goats, a deer and a phoenix viewing the moon before pine trees and rocky outcrops, the shoulder with a lappet and foliate band, the neck with stiff-leaf decoration, 42 cm high

R6 000 – 8 000

42

A Chinese yellow *sgraffiato* ground and *faux-bois* bowl, Qing Dynasty, 19th century

the ogee-shaped body finely incised with feathery arabesques, enamelled in pink and shades of green with peonies, the interior painted in brown tones imitating wood, *apocryphal underglaze-blue six-character Qianlong mark*, 20,8 cm diameter

R8 000 – 10 000



40



42

43

A large Chinese yellow-ground famille-verte jar and cover, Qing Dynasty, late 19th century

the tapering ovoid body enamelled in shades of green and aubergine with a pair of opposing phoenixes before a rocky outcrop, birds in flight, butterflies and flowerheads, the shoulder decorated with a cell-diaper border with alternating medallions of Buddhist emblems, the domed cover decorated with butterflies and sprays of peonies, 41,5 cm high

R10 000 – 12 000



43

44

**A Chinese famille rose dish,
late Qing Dynasty**

circular, the centre painted with a
peony, iris, berries, foliage and *lingzhi*
before a rocky outcrop painted in
shades of blue and green, gilt rim,
apocryphal iron-red Qianlong mark,
gilt loss, 24,2 cm diameter

R6 000 – 8 000



44

45

**A Chinese famille-rose bowl,
Republic period**

the interior painted in iron-red with
a peach enclosed by five bats, the
exterior enamelled and painted
with a pair of long tailed pheasants
perched on a branch with clusters of
berries, peony and foliage, *rim chips*,
iron-red six-character mark of Wu
Chang Gongsu, 19 cm diameter

R7 000 – 9 000



45

46

**A pair of Chinese yellow
sgraffiato ground and famille-
rose vases, late Qing/early
Republic period**

the tapering cylindrical bodies with
circular panels of a bird on a branch
amongst blossom, enclosed by a
yellow-ground finely incised with
feathery arabesques and enamelled
with spring flowers, *apocryphal iron-
red Qianlong seal mark*, 34 cm high (2)

R9 000 – 12 000



46

47

**A large Chinese famille-rose
'Nine Peaches' bottle vase,
Tianqiuping, Republic period**

enamelled with gnarled branches
bearing nine auspicious peaches and
blooms, *rivets*, *apocryphal iron-red*
Qianlong six-character mark, collector's
paper labels, 52 cm high

R40 000 – 50 000



47

48



48
A Chinese ivory card case,
Canton, Qing Dynasty,
19th century

carved with figures at leisure in a terraced garden before pavilions amongst pine, blossom, prunus and willow trees, the detachable cover similarly carved, *10,6 cm high*

R7 000 – 9 000

*This lot is not suitable for export

49



49
A Chinese Export tortoiseshell
circular box and cover,
Canton, Qing Dynasty,
19th century

the detachable cover carved in high relief with figures in a sampan before a balustraded garden and pavilions, enclosed by a foliate border, the reverse carved in low relief with four figures in a garden, *11,4 cm diameter*

R8 000 – 10 000

*This lot is not suitable for export

50



50
A Chinese 'huanghuali'
drum stool, Qing Dynasty,
19th century

of barrel shape supported on short bracket feet, with curved and carved openwork sides, the upper and lower aprons carved with a band of *ruyi*-heads, *41,5 cm high, 32,5 cm wide*

R7 000 – 9 000

51



51
A large Chinese hardwood
and cloisonné ruyi sceptre,
Qing Dynasty, 19th century

of undulating form with a lappet shaped terminal, decorated with green-ground panels enclosing scrolling lotus, flowerheads and ribbon-tied scrolls, the carved hardwood body decorated with *ruyi*-heads and geometric motifs, the reverse with a *wan* pattern ground, attached blue silk tassel and jade bead, *the sceptre 56 cm long*

R15 000 – 20 000



52

52
A Chinese pale celadon jade carving of a finger citron, Qing Dynasty, late 18th/early 19th century
 borne on a leafy stem with a smaller citron to one side, the stone of pale celadon tone with white and brown inclusions, 8,5 cm high
 R15 000 – 20 000



53

53
A Chinese pale celadon jade carving of a 'magnolia' vase, Qing Dynasty, late 18th/early 19th century
 carved as a magnolia bloom issuing from curling tendrils terminating in buds, the side with a *chilong* with bifurcated tail clambering over the petals of the flower, the stone of pale celadon tone with white and brown inclusions, 11,5 cm high
 R20 000 – 25 000



54

54
A Chinese white jade bi disc, Qing Dynasty, 18th century
 the flattened pierced disc carved in relief with a writhing *chilong*, the reverse carved with bosses, 5,6 cm diameter
 R20 000 – 25 000



55

55
A Chinese celadon jade brush washer, Ming Dynasty, 17th century
 the bowl carved as a lotus enclosed by foliage and flowerheads, the stone of pale celadon tone with white inclusions, *hairline cracks*, *minor chips*, 11,4 cm wide
 R6 000 – 8 000



56

56
A Chinese jade carving of a Bixie, 17th century and later
 the beast seated on its haunches, its head turned slightly to the left, a single horn curling between its ears, the stone of mottled brown and cream tones, *alterations and cracks*, 6,5 cm long
 R5 000 – 7 000

57
A Chinese pale celadon jade carving of an Immortal, Qing Dynasty, late 18th century
 the bearded robed figure standing with a peach in each hand, the stone of pale celadon tone, *minor chips*, *hairline cracks and scratches*, 13 cm high
 R12 000 – 15 000



58

58
A Chinese pale celadon jade brush washer,
Qing Dynasty, 17th/18th century

the bowl carved as a stylised flower enclosed by a foliate-and-flowerhead handle to the side, the stone of pale celadon tone with white inclusions, *minor chips*, 12 cm wide

R12 000 – 15 000



59

60
A Chinese pale celadon jade belt buckle,
Qing Dynasty, 18th/19th century

carved as two slightly arched panels with intertwining *chilong*, the clasp carved with a *taotie* mask, the stone of pale celadon tone, *hairline cracks*, 10,4 cm wide

R15 000 – 20 000



60

62
A Chinese white jade lobed cup,
Qing Dynasty, 18th/19th century

the ribbed body raised on four lobed feet, the stone with mottled white and brown inclusions, 2,9 cm high

R5 000 – 7 000



61



62

61
A Chinese pale celadon jade two-handled
vase, late Qing Dynasty, 19th century

the flattened bulbous body carved in relief with stylised flowerheads and foliage, the sides applied with pierced zoomorphic handles, raised on a low oval foot, the stone of pale celadon tone with white and brown inclusions, *hairline cracks*, 11 cm high

R8 000 – 10 000



63

63
A Chinese celadon carved jade cup,
Qing Dynasty, 19th century

raised on a circular foot, the stone of mottled green tone with white and brown inclusions, 5,7 cm high; and another, the semi-translucent stone of celadon tone with white inclusions, 6 cm high (2)

R12 000 – 15 000





64

**64
A Chinese white and grey jade carving
of a dog and its pup, Qing Dynasty,
19th century**

the recumbent female with its pup resting its head
on her right haunch, the stone of white and grey
tones, 4,9 cm wide

R12 000 – 15 000



65

**66
A Chinese white jade figure of a boy,
Qing Dynasty, 19th century**

the standing figure supporting a bird in his left hand,
a lotus flower suspended over his right shoulder, the
stone of a white tone, *minor chips*, 7,5 cm high

R6 000 – 8 000



66

**68
A Chinese celadon jade brush rest,
Qing Dynasty, 19th century**

carved as shaped rockwork with three peaks, the
front with *ruyi*-head, crane and deer, the reverse
decorated with a large pine tree, of pale celadon and
dark tones, 6,3 cm high

R9 000 – 12 000



67

**65
A Chinese pale celadon jade carving of a
young boy, Qing Dynasty, 19th century**

seated on a pair of geese each with a branch in their
beak, the stone of pale celadon tone with russet
flecks, 7,4 cm high

R8 000 – 10 000



68

**67
A Chinese spinach jade bowl,
Qing Dynasty, 19th century**

the rounded sides rising from a spreading foot to an
everted rim, the stone of mottled green tone with
white and brown inclusions, 11,7 cm diameter

R5 000 – 7 000



69

**69
A Chinese pale celadon archaistic jade
cup, Qing Dynasty, 19th century**

the oval body carved in relief with geometric motifs
and four rectangular ribbed handles, with flared lip,
the stone of mottled green tone, 5,8 cm high

R5 000 – 7 000

70



70
A Chinese grey and brown jade carving of an elephant, Qing Dynasty, 19th century

the stylised animal with a seated attendant at his side, the stone of mottled grey with brown inclusions, *height possibly reduced, minor chips, 7,5 cm wide*

R7 000 – 9 000

71



71
A Chinese grey and beige jade 'lotus' libation cup, Qing Dynasty, 19th century

the bowl carved as a lotus flower raised on a folded lotus leaf, the side applied with lotus buds, the stone of grey and beige tones with black inclusions, *6,7 cm high*; and a Chinese celadon jade belt hook, Qing Dynasty, 19th/20th century, each terminal carved with a dragon's head, the stone of pale celadon and black tones, *10,9 cm long (2)*

R12 000 – 16 000

71



72
A Chinese celadon jade bi disc, Qing Dynasty, 19th century

the flattened disc carved in low relief with stylised *chilong* and *ruyi*-heads, the reverse carved with stylised scroll motifs, the re-worked stone of celadon, russet flecks and black inclusions, *8,4 cm diameter*

R7 000 – 9 000

72



74
Two Chinese pale celadon carved jade cups, Qing Dynasty, late 19th century

each raised on a circular foot, the stone of pale celadon tone with black inclusions, *hairline cracks to the rim, the taller 6,2 cm high (2)*

R8 000 – 12 000

74



73
A Chinese pale celadon jade covered box, Qing Dynasty, late 19th century

circular, raised on a low circular foot, with domed cover, the semi-translucent pale celadon stone with white inclusions, *hairline cracks, 7,4 cm diameter*

R3 000 – 4 000

73



75



75
A Chinese jadeite rectangular jade pendant, Qing Dynasty, 19th century

the pierced body carved in low relief with stylised gourds and foliage, suspended by a blue silk cord heightened with seed-pearls and a jade attachment ring, the stone of mottled blue and grey tones, *5,2 cm high*

R5 000 – 7 000

76

A Chinese celadon jade two-handled vase, late Qing Dynasty

carved in relief with a phoenix, scrolling cloud motifs, a dragon chasing a flaming pearl, the sides applied with s-scroll pierced handles, raised on a rocky outcrop base, the stone of yellowish mottled green tone, 13,8 cm high

R10 000 – 15 000



76

77

A Chinese celadon jade 'dragon carp' vase, late Qing Dynasty

carved as a scaly fish-dragon leaping from stylised waves, the stone of mottled dark celadon tone with white and brown inclusions, hairline cracks, 16 cm high

R15 000 – 20 000



77

78

A Chinese pale celadon jade carved vase and cover group, late Qing Dynasty

carved with a mythical beast supporting a covered vase on its back, the left side applied with a ring-handle, the right with a writhing *chilong*, the front and reverse of the vase carved with foliage, the cover with zoomorphic finial, the stone of pale celadon tone, the spurs chipped, 14 cm high

R12 000 – 15 000



78

79

A Chinese celadon jade 'champion vase' and covers, late Qing Dynasty

each twin vase carved in relief with *yin-yang* motifs and conjoined by a *chilong*, each cover carved with *ruyi*-heads, the base carved with a mythical beast raised on four paw feet, the stone of mottled green tone with white and brown inclusions, hairline cracks, 11,6 cm high

R15 000 – 20 000



79

80

A Chinese celadon jade carved boulder, late Qing Dynasty

of irregular profile, the front carved with *Lohan* seated on a lotus throne in a grotto beneath pines, a mythical beast growling at his side, the reverse inscribed '*Jie xiang zhuang yan tu*', and cyclical year for 1865, viewed by a figure from above with a double gourd vase, the foreground with a bat, the stone of mottled green and brown tones with white inclusions, 13,8 cm high

R15 000 – 20 000



80



81

81
A Chinese celadon and beige jade two-handled vase, late Qing Dynasty

the flattened ovoid body carved with a pair of five-clawed dragons and writhing *chilon*, the sides applied with zoomorphic handles, raised on an oval foot, the stone of mottled celadon and beige tones, 16,5 cm high

R25 000 – 30 000



82

82
A Chinese celadon jade belt buckle, late Qing Dynasty

carved as two slightly arched panels with a pair of bats, *ruyi*-heads and foliage, the clasp carved with a *taotie* mask, the stone of celadon tone with white and black inclusions, *hairline cracks*, 12,2 cm wide; and a Chinese jade butterfly plaque, 20th century, the butterfly carved with outspread wings, the pierced upper section with hanging cord, the stone of pale green tone with white inclusions, 11,8 cm wide (2)

R12 000 – 15 000



84

83
A Chinese celadon jade carving of a horse, late Qing Dynasty

lying down with its legs tucked beneath its body, carved in low relief with reins and a saddle, the stone of mottled celadon and brown tones, 8 cm wide

R5 000 – 7 000

84
A Chinese pale celadon jade carving of a washer, late Qing Dynasty

the pierced foliate base carved with key-fret motifs, stylised phoenixes and dragons below a lobed dish, the side applied with a feeding bird, the stone of pale celadon tone, 22,5 cm wide

R8 000 – 10 000

85

A Chinese jadeite carving of a phoenix, Qing Dynasty, 20th century

the bird looking back with a peony in its beak, it's right foot raised on a rock, *minor chips, fixed to a carved hardwood stand, 21 cm high including stand*; and a Chinese jade carving of a deer, Qing Dynasty, 19th/20th century, the standing deer with bifurcated horns and a *lingzhi* in its mouth, the stone of mottled green and brown tone, 8,1 cm high (2)

R15 000 – 20 000

86

A Chinese agate figure of Buddha, late Qing Dynasty

the seated laughing figure holding a string of beads in his right hand, *minor chips, 6 cm high*

R6 000 – 8 000

87

A Chinese carved rock crystal figure of an Immortal, late Qing Dynasty

the standing figure holding a fan in his right hand and a sack in his left, *minor chips, 8,2 cm high*

R6 000 – 8 000

88

A Chinese rock crystal carving of a duck and duckling, late Qing Dynasty

the duck carved with a lotus bloom's stem in its beak, the engraved body resting on a lotus leaf and bloom, the duckling resting its head on the stem, 11,5 cm long

R8 000 – 10 000

89

A Chinese celadon jade snuff bottle, Qing Dynasty, 19th century

the ovoid body carved with a pair of writhing *chilong*, the stone of even celadon tone, jadeite stopper, 6,1 cm high

R8 000 – 10 000

*This lot is not suitable for export



85



86



87



88



89



90



91



92



93

**90
A Chinese 'apple green' jadeite
two-handled vase and cover,
late Qing Dynasty**

the flattened baluster body carved in relief with bands of stiff-leaf and foliate motifs, the sides applied with elephant ring-handles, the cover carved with an oval finial, raised on a low oval foot, the stone of mottled green and brown tone, 10,5 cm high, 4,9 cm wide; a Chinese jadeite snuff bottle, late Qing Dynasty, the tapering body carved in low relief with stylised foliate and lappet borders, the stone of 'apple-green' tone, jade stopper, 8,5 cm high; and a Chinese jade covered box, Qing Dynasty, 19th century, made for the Mogul export market, oval, carved in relief with bands of key-fret motifs and stylised lotus leaves, raised on a domed oval foot, the cover carved with flowerheads and foliage, the stone of mottled green and brown tones with white and brown inclusions, 4,5 cm high, 4,9 cm wide (3)

R14 000 – 18 000

*This lot is not suitable for export

**91
A Chinese celadon and
rust jade snuff bottle, Qing
Dynasty, 18th/19th century**

the ovoid flattened body carved to the front with a carp leaping from stylised waves, the reverse with a deer and *ruyi* below pines, the stone of mottled green and red tones with brown inclusions, ivory stopper, 7,3 cm high; and a Chinese 'pebble' snuff bottle, late Qing Dynasty, ovoid, the front carved with flowers and a rocky outcrop, turquoise stopper, 6,8 cm high (2)

R14 000 – 18 000

*This lot is not suitable for export

**92
A Mongolian metal-
mounted ivory snuff bottle,
19th century**

the ovoid body set with a metal-mounted collar moulded with a dragon and flaming pearl above a filigree border, the base set with a band of turquoise beads, with similarly decorated metal-mounted stopper, *hairline cracks*, 8,7 cm high; and a Chinese cinnabar lacquer snuff bottle, Qing Dynasty, 18th/19th century, the flattened ovoid body carved with a continuous frieze of figures before a mountainscape, with pavilions, trees and rocky outcrops enclosed by geometric and foliate motifs, the sides carved in low relief with mask-headed ring-handles, raised on an oval foot, metal-mounted jade stopper, 9 cm high (2)

R12 000 – 15 000

*This lot is not suitable for export

**93
A Chinese stained ivory
snuff bottle, Qing Dynasty,
19th century**

the front carved in relief with a monkey hanging from a vine enclosed by a lobed border, the reverse with a monkey and its child seated on a rocky outcrop, the ovoid flattened body intricately carved in low relief with geometric motifs, with similarly decorated ivory stopper, *inscribed pseudo-Qianlong reign mark*, 7,9 cm high; and a Chinese amber snuff bottle, late Qing Dynasty, the flattened ovoid body carved to the front with an Immortal holding a peach and a fly-whisk, the reverse with a young boy playing with a crane below a pair of bats against an engraved lozenge background, the sides carved in relief with mask-headed ring-handles, amber stopper, *lacking snuff spoon*, 8,3 cm high (2)

R14 000 – 18 000

*This lot is not suitable for export



94

**A Chinese 'pebble' jadeite snuff bottle,
Qing Dynasty, 19th century**

the ovoid body carved in low relief with stylised foliage, peaches and butterflies, the stone of 'apple-green' tone, jade stopper, 6,5 cm high; a Chinese pale celadon jade snuff bottle, Qing Dynasty, 19th century, carved in the form of a fisherman carrying a sack over his left shoulder, a fish in his right hand, the stone of pale celadon tone, jade stopper, hairline cracks, 7,5 cm high; another with hexagonal body and ribbed sides, the stone of 'spinach' tone, stopper, damage to snuff spoon, 6,5 cm high (3)

R15 000 – 20 000

*This lot is not suitable for export

95

**A Chinese 'shadow' agate snuff bottle,
Qing Dynasty, 19th century**

of flattened ovoid form, the sides carved in low relief with mask-headed ring-handles, the stone of pale grey tone with brown inclusions, metal-mounted jade stopper, minor chip, 6,6 cm high; and a Chinese moss agate snuff bottle, late Qing Dynasty, of ovoid flattened form, the stone of mottled brown, purple and grey tones with lavender inclusions, metal-mounted jade stopper, cracks to stopper, 7,7 cm high (2)

R12 000 – 15 000

*This lot is not suitable for export

96

**A Chinese 'shadow' agate snuff bottle,
late Qing Dynasty**

of flattened double-gourd form, the stone of pale grey tone with brown inclusions, metal-mounted jade stopper, minor chip, 7,3 cm high

R8 000 – 10 000

97

**A Chinese agate snuff bottle, late
Qing Dynasty**

with flattened ovoid body carved to the front with a duck with a lotus in its beak, jade stopper, 7,3 cm high; another of rounded form, the front carved in relief with a horse below a prunus tree, the mottled stone of pale grey tone, stopper, lacking snuff spoon, 6,3 cm high (2)

R10 000 – 15 000

*This lot is not suitable for export

98

**A Chinese 'hair crystal' snuff bottle,
late Qing Dynasty**

the flattened ovoid body raised on an oval foot, tiger's eye stopper, 7,8 cm high; and a Chinese spinach jade snuff bottle, late Qing Dynasty, the flattened ovoid body with carved mask-headed handles, raised on a low oval foot, the stone of 'spinach green' tone, stopper, dent to the body, damage to snuff spoon, 6,7 cm high (2)

R10 000 – 15 000

*This lot is not suitable for export



99



100



101



102

99
A Chinese root amber snuff bottle, late Qing Dynasty

of ovoid form, raised on a low oval foot, with metal-mounted jade stopper, 7 cm high; and a Chinese aventurine-splashed glass snuff bottle, late Qing Dynasty, the flattened ovoid body with copper-coloured splashes against a black ground, stopper, 6,7 cm high (2)

R12 000 – 15 000

*This lot is not suitable for export

100
A Chinese cameo agate snuff bottle, late Qing Dynasty

of rounded form, the front carved in relief with a lion, bat and ruyi-head, stopper, lacking snuff spoon, 6,8 cm high; and a Chinese agate snuff bottle, late Qing Dynasty, of rounded form, carved in relief with figures sailing in sampans on a riverscape, the mottled stone with brown inclusions, stopper, 8,4 cm high (2)

R12 000 – 15 000

101
A Chinese smokey quartz crystal double snuff bottle, late Qing Dynasty

each ribbed body terminating in faux-coral stoppers, 6 cm high; and a Chinese quartz snuff bottle in the form of a double gourd, late Qing Dynasty, the front carved with a peony tree, a rocky outcrop and a bird in flight, the reverse with foliage and a butterfly, the stone of brown tone, coral stopper, 7 cm high (2)

R14 000 – 18 000

*This lot is not suitable for export

102
A Chinese 'shadow' agate snuff bottle, late Qing Dynasty

of flattened ovoid form, the semi-translucent stone highlighted with mottled brown patterns, metal-mounted coral stopper, damage to stopper, 8,1 cm high; and a Chinese 'shadow' agate snuff bottle, late Qing Dynasty, of flattened form, the semi-translucent stone highlighted with mottled brown patterns, stopper, 7,3 cm high (2)

R14 000 – 18 000

*This lot is not suitable for export

103

Two Chinese shagreen snuff bottles, late Qing Dynasty

the first with flattened ovoid body, turquoise and coral stopper, 6 cm high; the second with flattened ovoid body, agate stopper, dents, 5,7 cm high (2)

R12 000 – 15 000

*This lot is not suitable for export

104

A Japanese lac burgauté snuff bottle, Meiji period, 1868-1912

of flattened ovoid form, the black lacquer ground set with minute mother-of-pearl and gold-foil tiles forming a chrysanthemum to the centre, with similarly decorated stopper, two-character mark, 5,7 cm high

R8 000 – 10 000

*This lot is not suitable for export

105

A Chinese pink tourmaline snuff bottle, late Qing Dynasty

carved as a seated *Qilin* with its front paws resting on a brocade ball tied with a ribbon, the stopper carved as a pup, minor chips, 5,9 cm high; a Chinese lapis lazuli snuff bottle, late Qing Dynasty, the flattened ovoid body carved with a bird and leafy branch to the front, stopper, repair to snuff spoon, 5,2 cm high; and a Chinese amethyst snuff bottle, late Qing Dynasty, the bulbous body carved with a pair of mask-headed ring-handles, stopper, 5,3 cm high (3)

R15 000 – 20 000

*This lot is not suitable for export

106

Four Chinese inside-painted glass snuff bottles, late Qing Dynasty

the front of the first painted with sprays of flowers, foliage and a butterfly, the reverse painted with a mountainscape and waterfalls, stopper, 7,1 cm high; the front of the second painted with peonies, foliage and a kingfisher, the reverse with pavilions before a mountainscape, stopper, damage to snuff spoon, 7,2 cm high; the front of the third painted with a sage holding a tablet before a small boy, the reverse with a riverscape, stopper, 7,5 cm high; and the fourth painted with a continuous frieze of the Eight Horses of Wang Mu, with tiger's eye stopper, 7,6 cm high (4)

R12 000 – 15 000

*This lot is not suitable for export



103

104



105



106

107

A Chinese overlay milky white and blue glass snuff bottle, late Qing Dynasty

of ovoid form, carved with stylised flowers and foliage, jade stopper, 6,7 cm high; a Chinese overlay snowflake glass snuff bottle, late Qing Dynasty, of ovoid form, carved with a pair of horses below willow and pine trees, with fixed stopper, lacking snuff spoon, 8 cm high; and another, of ovoid form, carved with fishermen and Immortals below willow and pine trees, coral stopper, 7 cm high (3)

R15 000 – 20 000

*This lot is not suitable for export

108

Three Chinese overlay snowflake glass snuff bottles, late Qing Dynasty

of ovoid form, carved with fishermen, dwellings and a water buffalo below pines and bamboo, stopper, 8,3 cm high; the second of ovoid form, carved with eight stylised Buddhist emblems, later stopper, damage to snuff spoon, 6,8 cm high; and the third of ovoid form, carved with a pair of fan-tailed carp feeding on lotus shoots, stopper, 6,7 cm high (3)

R12 000 – 18 000

*This lot is not suitable for export

109

A Chinese amber snuff bottle, late Qing Dynasty

carved as a 'finger citron' with pines, peaches and a monkey, with coral stopper, lacking snuff spoon, 7,6 cm high

R10 000 – 12 000

*This lot is not suitable for export



107



108

109

VARIOUS PROPERTIES

110

An Anglo-Indian ivory, horn, sandalwood and tortoiseshell miniature chess table, Vizagapatam, 19th century

the octagonal top inlaid with an ivory and tortoiseshell chequer board enclosed by triangular fret-work panels, each set to the centre with cartouche-shaped ivory panel highlighted with an ink engraving of a winged figure, enclosed by pen-work borders of trailing flowers and foliage, above a horn ring-turned column applied with three bands of sized bosses, raised on a quadripartite base and four ivory paw feet, 23,3 cm high, 26,2 cm wide; and a rosewood games box, the sliding lid applied with a pierced ivory plaque, enclosing thirty two diminutive ivory and stained ivory chess pieces, the box 4,8 cm high, 7,8 cm wide, 6,3 cm deep (Qty)

R12 000 – 15 000

*This lot is not suitable for export



110



111

**A massive Japanese
lacquered, ivory and
Shibayama-inlaid footed
charger, Edo period, 1615-1868**

decorated in high relief with a
mother-of-pearl hawk perched on
a flowering peony branch, with
magnolia and chrysanthemum
blooms, its claw clenched around a
small bird, with three further birds
circling, the foliage in gold *takamakie*,
on a black ground, *chips to the rim*,
88,5 cm diameter

R50 000 – 60 000

*This lot is not suitable for export



112



113



detail



114



115

112
**A Japanese silver bowl,
Samurai Shokai, Yokohama,
circa 1900**

circular, moulded in relief with
irises and foliage emerging from
water, engraved 'SAMURAI SHOKAI,
YOKOHAMA'; 34 cm diameter, 2530g

R35 000 – 40 000

113
**A Japanese blue and
white Arita VOC bowl,
late 17th century**

the central rondel painted with
the VOC monogram enclosed by a
double blue-line border, the body
painted in a continuous frieze
of stylised foliage and camellia
blossoms between further blue-line
borders, rivets, restorations, chips and
hairline cracks, 23,5 cm diameter

R20 000 – 30 000

LITERATURE

c.f. C.S. Woodward (1974) *Oriental
Ceramics at the Cape of Good Hope
1652-1795*, Cape Town, A.A. Balkema.
A similar example is illustrated on
page 66, numbers 95 and 96.

114
**A pair of Japanese blue and
white tokoro, 18th century**

the moulded five-panelled sides
loosely painted with floral sprays, the
shoulder with five medallions painted
with Buddhist emblems, the shortened
neck with zigzag band, 25 cm high (2)

R8 000 – 10 000

115
**A Japanese blue and white
dish, early 18th century**

the centre painted with a two-
handled vase of flowers, enclosed by
eight radiating panels of peonies and
foliage, the reverse loosely painted
with two sprays of flowers and blue-
line borders, 32,8 cm diameter

R10 000 – 12 000

116

A pair of Japanese Arita blue and white dishes, 18th century

each loosely painted in Kraak-style, the centre painted with two *ho-o* birds, pomegranates and camelias, the border with alternating panels of bamboo and peonies, *firing faults*, 21,6 cm diameter (2)

R8 000 – 10 000



117

A Japanese Satsuma earthenware bowl, Meiji period, 1868-1912

the body intricately decorated in coloured enamels and gilt with four alternating panels of pavilions before mountainscapes and geisha scenes, enclosed by a border of scrolls and bands of geometric motifs, the centre painted with a large pavilion crowded with young boys enclosed by gilt zigzag borders, raised on an octagonal foot, *signed Kaizen sei*, 12,2 cm diameter

R15 000 – 20 000



118

A Japanese Satsuma bowl, Meiji period, 1868-1912

of wavy outline and decorated in enamels and gilt, the interior with a multitude of densely clustered minute butterflies, the exterior with three shaped panels decorated with small boys, geisha women and scholars at various pursuits, enclosed by brocaded borders, chrysanthemum blooms, maple and blossoms, between brown and gilt bands, *signed Kaizen sei*, 10,5 cm diameter

R12 000 – 15 000



PROVENANCE

Cynthia Villet-Gardner, and thence by descent.

119

A Japanese carved Satsuma vase, late Meiji period, 1868-1912

the cylindrical body painted in enamel and gilt with chrysanthemums, peonies and foliage below a lappet-shaped border carved with stylised geometric and foliate motifs, the neck and flared lip similarly carved, between enamelled and gilt foliate borders, *signed*, 28,6 cm high

R12 000 – 15 000



120

A Japanese Kutani figure of Gyoran Kannon, (Fish-Basket Kannon) Meiji Period, 1868-1912

the standing figure with clasped hands holding a basket with a large fish, adorned with a necklace, her head covered with a cowl, her robe decorated with gilt *mon* and scrolling foliage, *gilding slightly worn*, 21 cm high

R8 000 – 10 000



121

A Japanese Satsuma earthenware hexagonal Koro, Meiji period, 1868-1912

the body intricately decorated in coloured enamels and gilt with flowerheads, raised on three outswept feet, the pierced cover similarly decorated and surmounted by a bud-shaped finial, *signed*, 6,5 cm high

R3 000 – 4 000



121

122

A Japanese Satsuma earthenware box and cover, Meiji period, 1868-1912

circular, the body intricately decorated in coloured enamels and gilt with chrysanthemums, peonies and foliage, raised on three feet, the centre painted with a spray of flowers, the cover similarly decorated, *signed*, 15 cm diameter

R6 000 – 8 000



122

123

A Japanese Satsuma earthenware dish, Meiji period, 1868-1912

the lobed body intricately decorated in coloured enamels and gilded brocade with chrysanthemums, peonies, foliage and further flowerheads, the reverse decorated with three floral sprays, *signed*, 31,5 cm diameter

R6 000 – 8 000



123

124

A Japanese Arita celadon-glazed kendi, Edo period, late 17th century

the ribbed body and spout with elongated neck and rolled rim, 21,5 cm high

R6 000 – 8 000



124

125

A pair of Japanese Arita blue and white kendis, Edo period, 19th century

each bulbous body decorated with bands of peonies, camelia blossom, pomegranates and stylised foliage, the elongated neck with lappet border, *chips to the spouts*, 24 cm high (2)

R18 000 – 20 000



125

126

A Japanese blue and white bowl, Meiji period, 1868-1912

decorated in shades of underglaze-blue with a bird perched on a the branch of a chestnut tree, *signed in underglaze-blue*, 9 cm high

R5 000 – 7 000



126



127



128



129



130



131



132



133

127

A wood netsuke of a tiger, 19th century

seated, its head turned back to the left as it snarls, its tail passing around the left flank forming the *himotoshi*, the body stripes heightened with staining, the pupils inlaid, *signed in a long oval reserve, Mitsunobu, 3,2 cm high*

R10 000 – 12 000

128

A wood netsuke of a tiger, 19th century

seated, its head turned back to the left and its tail sweeping over the back, the pupils inlaid, the wood of mid-brown patina, 3 cm high

R8 000 – 10 000

129

A wood netsuke of a hare, 19th century

seated, facing ahead, its ears folded back, mid-brown patina, 2,4 cm high

R9 000 – 12 000

130

A wood netsuke of the 'Three Wise Monkeys' (Sambiki Saru), 19th century

seated with their backs to each other, their feet forming the *himotoshi*, the pupils inlaid, the wood dark stained, *signed Ikko, Nagoya, 3,8 cm high*

R7 000 – 9 000

131

A wood netsuke of a monkey, 19th century

seated, grooming its left knee, with inlaid eyes, pale-brown patina, 3 cm high

R9 000 – 12 000

132

A wood netsuke of a badger late 18th/early 19th century

seated on its enlarged drum-shaped scrotum, mid-brown fine patina, 3,5 cm high

R8 000 – 10 000

133

A wood and shibayama manju netsuke, late 19th century

in the form of a lenticular round case, the cover carved with a house in a landscape, the moon, birds and *shoji* inlaid with mother-of-pearl, the reverse with foliate motifs, with mid-brown patina, 3,5 cm diameter

R5 000 – 7 000

134

A wood and ivory netsuke of a Kyogen dancer, 19th century

wearing the ivory mask of *Hyottoko*, with bulging eye and twisted mouth, his hands behind his back, *signed Hogetsu*, 4 cm high; another, of a blind man, 19th century, standing holding his finding staff, with articulated ivory head, 5,8 cm high; and a wood netsuke of *mokugyo* (wooden drum), with double dragon's heads handle above clouds, 3,5 cm high, all with pale-brown patina (3)

R14 000 – 18 000

*This lot is not suitable for export



135

A wood figure netsuke of a fisher-girl and an octopus, 19th century

the girl holding the amorous octopus by its nose, its tentacles wrapped around her back and over her knee, 4 cm high; a lacquered and painted netsuke of an *Oni*, 19th century, seated next to a drum, his head resting on his right hand, gilt highlights, 2,8 cm high, and a wood netsuke of a sculptor, 19th century carving the head of a *Ni-O* temple guardian, *signed Toshiyuki*, 1,9 cm high (3)

R16 000 – 20 000

*This lot is not suitable for export



136

A wood netsuke of a tengu, 19th century

mixing *miso* with its nose, the wood with mid-brown patina unsigned, 3,7 cm high; and a wood netsuke of an *Oni*, 19th century, squatting before a pan of *mochi*, the wood with light-brown patina, *signed in a foliate reserve*, 3,5 cm high (2)

R14 000 – 18 000



137

A wood netsuke of a disappointed rat catcher, mid 19th century

the crouching half-naked figure pressing down a trap with both hands and crying out as a rat escapes over his back, his teeth of marine ivory, *signed Gyokko (Gyokkosai)*, 3,5 cm high; and a root wood netsuke, 19th century, the open centre carved with a fox, its pupils inlaid, pale-brown patina, 3,2 cm high (2)

137



138

R16 000 – 20 000

*This lot is not suitable for export

138

A wood netsuke group of 'The Sambo Kojin', 19th century

the woman on horseback holding a pipe and tobacco pouch, her two children in side panniers, her husband leading the horse over a bamboo bridge, dark-brown patina, *signed Kogyoku*, 4,4 cm high

R9 000 – 12 000

139

A wood Noh mask netsuke of Hannya, late 18th/early 19th century

carved with mouth agape, *signed with Kakihan*, 6 cm high; and another, of seven Noh masks, 19th century, including Okina, Hannya, Ko-omote, Shio-fuki, Okame, 4,8 cm high (2)

139



R12 000 – 15 000

140

A wood netsuke of a father and baby, 19th century

seated, cradling the swaddled baby, 4 cm high; a wood netsuke of a man trimming his beard, 19th century, seated, holding his beard in his left hand whilst he trims it with his right, 3,7 cm high, and a wood netsuke of a sennin, 19th century, the bearded figure holding a bloom, 5,7 cm high, all with mid-brown patina (3)

140



R12 000 – 15 000

141

A wood Noh mask netsuke of O-Beshi-Mi, 19th century

with inset mother-of-pearl eyes, *signed Deme Josei*, 3,8 cm high; another, of Tengu, 19th century, 4,5 cm high; and another, of Maijo, 4 cm high, all with mid-brown patina (3)

R12 000 – 15 000



142

A wood netsuke of Kinko Sennin astride a carp, 19th century

the figure with his right arm raised to his forehead, his left hand resting on the carp's head, dark-brown patina, *signed Ichichiku*, paper label inscribed 1229, 3 cm high; and another, of Tekkai Sennin, 19th century, the standing Daoist immortal with his body supported on a crutch, *signed Miwa*, 8,4 cm (2)

R10 000 – 12 000



143

A wood figure netsuke, 19th century

standing holding a vessel filled with *mochi* in his right hand, *one foot with chip*, 5,2 cm high; a wood netsuke of a Karako (Chinese child), 19th century, seated with his right index finger pointing to his eye, his left arm behind his back holding a mask in his hand of *Usobuki* (fibber) with typical pursed lips, 3 cm high; and a wood figure netsuke, 19th century, seated, the part-robed smiling figure holding a bottle vase in both hands, 3 cm high, each with mid-brown patina (3)

R12 000 – 15 000





144



145



146



147



148



149



144
An ivory netsuke of a monkey, 19th century

seated, clasping his knees, dressed as a courtier in an *eboshi* hat, his robes engraved and stained with a crane and sprays of foliage, holding an *ogi* in his left hand and ginkgo nuts in his right, with inlaid eyes, 4 cm high

R10 000 – 12 000

*This lot is not suitable for export

145
A walrus ivory netsuke of mushrooms, 19th century

carved as a cluster of nine fungi of differing sizes joined at their stalks to form the *himotoshi*, heightened with staining, 2,5 cm high

R7 000 – 9 000

*This lot is not suitable for export

146
An ivory netsuke of a reveller and his attendant, 19th century

the figures enclosed by the leaves of an open book, the reveller lying on his back with his right leg resting on his left thigh, his attendant pouring sake into a vessel held in the recumbent's right hand, *signed Shunzan*, 4,2 cm wide

R6 000 – 8 000

*This lot is not suitable for export

147
An ivory netsuke of a tiger, 19th century

lying with its body turned to the left, its head resting on its forepaws and its tail curled over its left flank, the pupils inlaid, 2 cm high

R12 000 – 15 000

*This lot is not suitable for export

148
An ivory netsuke of two puppies playing, 19th century

realistically rendered, heightened with staining, with inlaid eyes, *signed with kakihan in a reserve*, 2 cm high

R8 000 – 10 000

*This lot is not suitable for export

149
An ivory netsuke of a goat, 19th century

its forelegs bent and its hind legs drawn in, heightened with staining, the eyes inlaid, 2,5 cm high; and an ivory netsuke of a cockerel, 19th century, the eyes inlaid, 4 cm high (2)

R12 000 – 15 000

*This lot is not suitable for export

150

An ivory netsuke of a Dutchman, late 18th century

standing, holding his beard in his left hand, wearing a broad-brimmed hat, his coat with horn buttons, engraved leggings, 7 cm high

R9 000 – 12 000

*This lot is not suitable for export



150

151

A stag antler netsuke of a Dutchman, 18th century

the standing robed figure holding a rooster, 5,2 cm high

R7 000 – 9 000



151



152



152

A marine ivory netsuke of Okame, 19th century

standing, the robed figure clasping the stem of a phallic mushroom, 6,5 cm high; and an ivory figure of a monkey, 19th century, the long-legged animal standing on a circular base, signed, 6 cm high (2)

R12 000 – 15 000

*This lot is not suitable for export



153



154



153

A staghorn netsuke of the Chinese General Guan Yu, 18th/19th century

holding his moustache in his left hand and a ceremonial sword in his right, 8 cm high

R9 000 – 12 000

*This lot is not suitable for export

154

An ivory netsuke figure of a Sarumawashi, 19th century

standing, the laughing figure holding one end of a rope, with his monkey sitting on his left shoulder clutching the other end, 7 cm high; and an ivory okimono-netsuke of a traveller, 19th century, the figure with a wicker trunk on his back, flanked by his sparrow-headed children, his left hand holding a staff with one child holding a bundle in its left hand, oval shaped base, signed in a red lacquer reserve, 4,2 cm high (2)

R14 000 – 16 000

*This lot is not suitable for export

155

An ivory netsuke of an Oni, 19th century

the kneeling figure with three drums on its back, holding chopsticks in its right hand and a bowl of *mochi* in its left, enticing an Inari fox to eat the rice on a straw mat, the fox partly out of its abode, signed, 3 cm high; and another, 19th century, its left hand clenched before its face, its right hand resting on a drum, its crossed legs forming the *himotoshi*, 3,5 cm high (2)

R12 000 – 15 000

*This lot is not suitable for export



155



156

An ivory netsuke of a fisherman with clams, 19th century

the prostrate figure with his foot caught in a clam shell and holding onto a wooden stake, 4 cm wide; an ivory seal netsuke, 19th century, carved with two turtles walking over a large folded lotus leaf, heightened with black staining, the reverse with script, stained red-ground, 4,2 cm wide; and an ivory netsuke of a *fugu* (puffer) fish, 19th century, facing straight ahead, heightened with staining, inlaid eyes, 2,6 cm high (3)

R16 000 – 20 000

*This lot is not suitable for export



156

157

An ivory okimono-netsuke of Shoki, 19th century

standing in military attire, a large basket tied to his back with a rope pulled over his shoulder, with an *Oni* inside helping another to join him, a large conch shell at his feet, heightened with staining, the feet and conch shell forming the *himotoshi*, 5 cm high; and an ivory netsuke of boat, carved with six gods of good luck, 2 cm high (2)

R12 000 – 15 000

*This lot is not suitable for export



157

158

An ivory netsuke of Daruma, 19th century

seated beside a wanton geisha with a pipe in her right hand, heightened with black staining, *signed*, 3,7 cm high; and an ivory netsuke of the Sennin Chokwaro, 19th century, seated, the laughing sennin releasing a horse from a double gourd to the amusement of two boys, 2,5 cm high (2)

R12 000 – 15 000

*This lot is not suitable for export



158

159

159

An ivory netsuke of a fisherman with an octopus, 19th century

the standing figure grimacing and holding the tentacle of an octopus wrapped around his left leg, *signed Nanka*, 7 cm high

R10 000 – 12 000

*This lot is not suitable for export



160



161



162



163



160

An ivory netsuke of a skull, 19th century

resting next to a lizard and three tree trunks in sizes, to a shaped base, signed *Masmitsu*, 3 cm high; and another of a skeleton, 19th century, folded for burial, signed, 5 cm high (2)

R8 000 – 10 000

*This lot is not suitable for export

161

An ivory okimono-netsuke of a dragon, 19th century

intertwined with a warrior before an open sided box, 5,5 cm high; and an ivory *manju* of a dragon, 19th century, of rounded square form, its body coiled and set upon a base of clouds, 4,3 cm wide (2)

R9 000 – 12 000

*This lot is not suitable for export

162

An ivory Okimono-netsuke of Raiden and Futen, 19th century

Raiden seated before his large drum, his right hand raised, clutching an *obachi*, the figure of Futen climbing over the top of the drum begging to use it, to a stylised cloud base, the drum embellished with black horn bosses, Raiden and Futen with eyes inlaid, 5,2 cm high

R12 000 – 15 000

*This lot is not suitable for export

163

An ivory and shibayama okimono of a Gamma Sennin, 19th century

seated on the trunk of a tree, his engraved robes inlaid with mother-of-pearl, holding a toad in his left hand, another toad resting on his left shoulder, the long haired sage holding a staff in his right hand, with a further toad to the left of his right foot, the base in the form of a tree trunk, signed in a red seal reserve, 6 cm high; and an ivory okimono of a squirrel in combat with a snake, 19th century, the snake emerging from a leaf and berry branch, coiled around the squirrel's body, the eyes inlaid, 9 cm wide (2)

R12 000 – 16 000

*This lot is not suitable for export

164

**An ivory okimono of rats,
19th century**

carved with five rats playing among large
leaves issuing from a persimmon, with horn
inlaid eyes, 8,5 cm high

R6 000 – 8 000

*This lot is not suitable for export



164

165

**An ivory figural okimono,
19th century**

carved with a man laughing at five little men
metamorphosing into sparrows, each wearing
a *haori* and a straw *jingasa*, leaning back on his
right hand with a bundle behind him, a tree
trunk and small brush between his feet, *signed*
in a red lacquer reserve, Masayoshi, 5,5 cm high

R8 000 – 10 000

*This lot is not suitable for export



165

166

**An ivory okimono of Ashinaga and
Tenaga, 19th century**

the latter seated on his friend's back and
reaching down to grasp an octopus, its
tentacles entangled around Ashinaga's legs,
the octopus with inlaid eyes, a basket of fish to
the reverse, *signed Tomoharu, 11,4 cm high*

R9 000 – 12 000

*This lot is not suitable for export



166

167

**An ivory okimono of a Yamabushi
and child, 19th century**

the standing mountain monk wearing a
skull cap and holding a broom in his right
hand, with a rosary over his left arm, his hand
cupping the face of a boy, the child holding a
bag in his left hand, with a bucket at their feet,
11,5 cm high; and an ivory okimono of a geisha
and her children, 19th century, the standing
figure suckling her baby and holding an
open fan in her right hand, with a small boy
holding a drum to her left, the mask of *Shio-
Fuki* at her feet, heightened with black staining,
8,5 cm high (2)

R12 000 – 15 000

*This lot is not suitable for export



167



168-170

No Lots