





The Vineyard Hotel, Newlands, Cape Town
16 October – 10.30am

**Jewellery, Watches,
European and Oriental Decorative Arts**

Lots 1–210

Lot 15 Diamond bracelet



1



2



3



4

1
Victorian diamond and pearl brooch

designed as a small bird perched on a branch set with rose-cut diamonds and a cabochon ruby eye, flanked by diamond floral sprays set with pearls, *Rd No. 183823, length approximately 30mm*

R4 000–6 000

2
Victorian diamond and citrine brooch

in the form of a ribbon set with twenty-nine old- and eight-cut diamonds weighing approximately 0.80 carat, centred by two *later* claw-set round-cut citrines weighing approximately 0.80–0.85 carat, *length approximately 33mm*

R1 500–2 000

3
Late Victorian gold, amethyst and seed pearl brooch, Cornelius Desormeaux Saunders & James Francis Hollings Shepherd

designed as a bar set with a row of seed pearls heightened with a fly, its body tube-set with a round-cut amethyst, *lacking one seed pearl, length approximately 50mm*

R2 500–3 000

4
Victorian amethyst and seed pearl necklace/pendant

collet- and claw-set with twenty-nine oval-cut amethysts weighing approximately 80–90 carats, set to the centre with a cross accented with seed pearls, with detachable bale, *length approximately 410mm, cased, retailed THOS. SLY, MARKET PLACE, SALISBURY*

R12 000–15 000



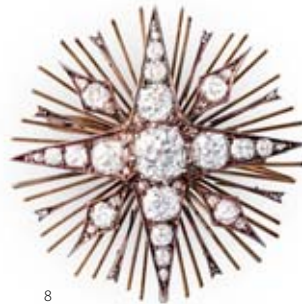
5



6



7



8



9

5
Diamond cluster ring

set to the centre with a claw-set round brilliant-cut diamond weighing approximately 0.75 carat surrounded by eight round brilliant-cut diamonds weighing approximately 1.75 carats, to open-work shoulders, *size O*

R17 000–20 000

6
Diamond ring

designed as a floral cluster, set with nine old-, eight-cut and round brilliant-cut diamonds, *size M*

R5 000–6 000

7
Diamond bracelet

octagonal tube-set with a row of forty-two graduated round brilliant-cut diamonds weighing approximately 3.40 carats, *length approximately 178mm*

R38 000–40 000

8
Late Victorian diamond star brooch/pendant

the starburst set with old miner- and rose-cut diamonds weighing approximately 3.50 carats to radiating knife-edge bars, *detachable brooch fitting, diameter approximately 40mm*

R18 000–20 000

9
Lady's stainless steel and diamond Reverso Florale Jaeger-LeCoultre wristwatch, Ref. 265808

quartz movement, silver dial with blue sword hands and Arabic numerals, round-cut diamonds set in two rows lining the front, back and sides of the reversible section, stainless steel case engraved with the initials 'RA', stainless steel Jaeger-LeCoultre bracelet, *diameter of bezel 25mm*

R15 000–20 000



10

**10
Diamond necklet**

the articulated open kite-shaped frame claw-set with seven round brilliant-cut diamonds to a knife-edge bar set with three further round brilliant-cut diamonds, weighing approximately 2.75-3.00 carats, to a fine link chain, length approximately 475mm

R35 000–40 000



11

**11
Pair of diamond pendant earrings**

each with diamond flowerhead surmount, to an articulated pierced pendant drop claw-set with seven round brilliant-cut diamonds weighing approximately 3.50-3.75 carats, screw and butterfly fittings, length approximately 32mm (2)

R30 000–35 000



12

**12
Diamond-set locket pendant**

the heart-shaped locket set to the front with round brilliant-cut diamonds weighing approximately 2.50-3.00 carats, to a diamond-set bale, length approximately 27mm

R30 000–35 000



13

**13
Sapphire single stone ring**

set to the centre with an oval-cut pink-purple sapphire weighing 1.93 carats, set in silver, size M½

R8 000–10 000



14

**14
Victorian ruby and diamond
brooch/pendant**

designed as a flowerhead, set to the centre with a round-cut ruby weighing approximately 0.50 carat, the petals set with old- and eight-cut diamonds weighing approximately 1.60 carats, *detachable brooch fitting, length approximately 28mm*

R5 000–7 000

**15
Diamond bracelet**

designed as a series of interlocking links collet- and claw-set with baguette-, old- and eight-cut diamonds and round brilliant-cut diamonds weighing approximately 7.00-8.00 carats, *length approximately 175mm*

R60 000–80 000



15



16

**16
Diamond double-clip
brooch, 1930s**

each open-work plaque set with eight old- and eight brilliant-cut diamonds weighing approximately 3.00-3.50 carats, *length approximately 40mm*

R15 000–20 000

**17
A silver and enamel cigarette
case, with import marks for
London, F B Reynolds, 1929,
.925 sterling**

rectangular, the front with pink guilloche enamel and applied with a foliate spray, engine-turned reverse, *6cm wide; cased*

R4 000–6 000

17





18

18
Lady's 18ct white gold, sapphire and diamond Chopard wristwatch, 1970s

nickel lever movement, the circular textured dial with baton indexes, the bezel claw-set with twenty diamonds and eight blue sapphires, the crown with cabochon-cut blue sapphire, to an integral woven bracelet, with adjustable Chopard folding clasp, *length approximately 175mm, diameter approximately 20mm*

R15 000–20 000



19

19
Opal and diamond brooch

the circular black opal enclosed by twenty-four old- and brilliant-cut diamonds weighing approximately 1.50–1.55 carats, *securing brooch pin missing, width approximately 25mm*

R4 000–6 000



20

20
Pair of ruby and diamond earrings/brooch

designed as a spray of flowers heightened by four calibre-cut synthetic rubies, set with twenty-six eight-cut diamonds weighing approximately 0.70 carat, *screw fittings, length approximately 30mm, brooch frame faulty (2)*

R6 000–8 000



21

21
Edwardian diamond and seed pearl brooch

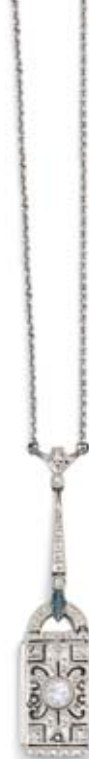
the open frame designed as ribbons, highlighted with pearl drops and set with rose-cut diamonds, *length approximately 37mm*

R4 000–5 000

22
Edwardian diamond necklet

the pierced locket-shaped pendant millegrain-set with rose- and old-cut diamonds, to a diamond-set bale and fine link chain with bolt clasp, *length approximately 445mm*

R6 000–8 000



22



23

23
**Gem-set and pearl necklet,
 Liberty & Co Ltd**

composed of twenty-one flowerhead drops centrally set with variously cut and cabochon-cut stones including an opal, pink sapphire, peridot, turquoise, blue sapphire, orange spinel, emerald, garnet, beryl and nine pearls, the petals set with white sapphires and three pearl drops, to a pearl necklet with ruby and white sapphire bolt clasp, *length approximately 425mm, cased Pearls untested and as such unwarranted*

R40 000–45 000

PROVENANCE
 Formerly the property of
 Sir John Holder.



24

24
**Diamond and pearl dress
 ring, Oporto**

designed as two flowerheads, centred by a blue baroque pearl and a smaller blue pearl, the petals set with rose- and eight-cut diamonds, to a reeded shank, *size N*

R8 000–10 000

25



25



25
**Diamond dress ring,
Charles Greig**

claw-set to the centre with a rectangular radiant-cut diamond weighing approximately 1.27 carats to a shank in the form of a wreath, millegrain-set with thirty-nine round brilliant-cut diamonds weighing approximately 0.35 carat, *size L½*; and a pair of diamond earrings *en suite*, set with twenty-one round brilliant-cut diamonds weighing approximately 0.55-0.60 carat, *post and buckle fitting (3)*

R50 000–55 000

26



27



26

**Diamond and sapphire
cluster ring**

designed as a flowerhead, claw-set with nine round-cut sapphires weighing approximately 0.75 carat and round brilliant-cut diamonds weighing approximately 0.95 carat, *size J½*

R4 000–6 000

27

Diamond brooch, 1930s

the openwork plaque millegrain-set with baguette- and eight-cut diamonds weighing approximately 2.00-2.20 carats, *length approximately 40mm*

R15 000–20 000

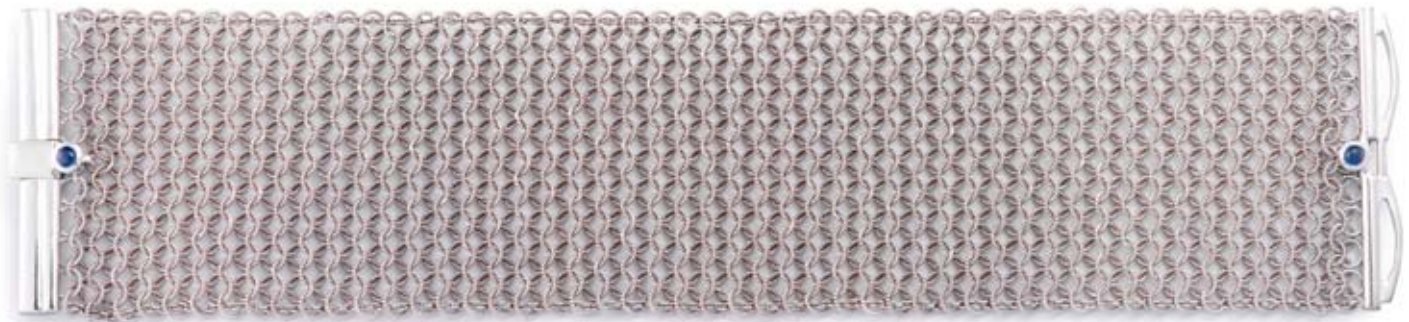
28

**White gold chainmaille and
sapphire cuff bracelet**

the ribbed clasp accented with two cabochon cut sapphires, *length approximately 180mm*

R22 000–25 000

28





29

29
Sapphire and diamond ring

claw-set with four oval-cut sapphires weighing approximately 2.12 carats heightened with six round brilliant-cut diamonds weighing approximately 0.32 carat, *size N*

R18 000–20 000



30

30
Diamond necklace

composed of a series of graduated compressed spherical links, partly set with round brilliant-cut diamonds weighing approximately 3.30 carats, *length approximately 435mm*

R34 000–36 000



31

31
Diamond dress ring

claw-set with a princess-cut diamond weighing 2.3300 carats, the shoulders set with fourteen princess-cut diamonds weighing approximately 0.37 carat, *size M*

Accompanied by certificate number 70901080/46015 from EGL South Africa stating that the diamond weighing 2.3300 carats is J in colour and S1 in clarity

R110 000–120 000



32

32
Lady's 18ct white gold and diamond Tank Française Cartier wristwatch, Ref. MG322120

automatic 20 jewelled lever movement, ivory-coloured guilloché dial, black roman numerals, aperture for date at 6 o'clock, white gold rectangular case with diamond-set bezel, diamond-set winding crown, water resistant, 18ct white gold Cartier bracelet with deployant clasp, *diameter of bezel 22mm; accompanied by Cartier presentation case*

R80 000–100 000

33
Three-pearl and diamond necklace

set to the front with a champagne, cream and grey pearl drop united by two claw-set round brilliant-cut diamonds to a fine link chain tube-set with eight round brilliant-cut diamonds weighing approximately 0.65 carat, *with associated link extension and closing clasp, length approximately 440mm*

R6 000–8 000



33

34
Diamond ring

claw-set with an emerald-cut diamond weighing 3.20 carats set between two emerald-cut diamonds weighing 1.00 carat and 1.03 carats, the shoulders set with six round brilliant-cut diamonds, *size N½*

Accompanied by certificate number 2135912296 from the GIA stating that the diamond weighing 3.20 carats is Natural Yellow Fancy in colour and VS1 in clarity. Accompanied by certificate number 2176544020 from the GIA stating that the diamond weighing 1.00 carat is E in colour and VVS2 in clarity. Accompanied by certificate number 1166214709 from the GIA stating that the diamond weighing 1.03 carats is G in colour and VS1 in clarity

R220 000–230 000



34

35
Lady's 18ct yellow gold Happy Diamonds Chopard wristwatch, circa 1980s, Ref. 20 /3905

quartz movement, champagne dial, gold baton hour and minute hands, 18ct gold case with three tube-set running diamonds in the band, two tube-set diamonds set in the centre lugs, black leather strap with original gold-plated buckle, *case dial and movement signed, diameter of bezel 18mm*

R20 000–25 000



35

36

Bulgari 'Monete' gold-mounted ancient coin key-ring

set with a Roman coin of Constantinus, inscribed 'ROMA' and the date '1 AUG. 306-337', set to a curb-link chain and securing ring, *length approximately 83mm*

R8 000–10 000



36

37

Gold and diamond LOVE necklace, Cartier

circular, set with round brilliant-cut diamonds, weighing approximately 1.30 carats, the reverse stamped LOVE, stamped Cartier and OS 0332, *diameter approximately 24mm, to a gold link chain, unmarked, presentation cased*

R12 000–15 000



37

38

Trinity de Cartier tri-gold ring

the pink gold ring engraved 'Cartier', inscribed with initials, *size O½*

R5 000–6 000



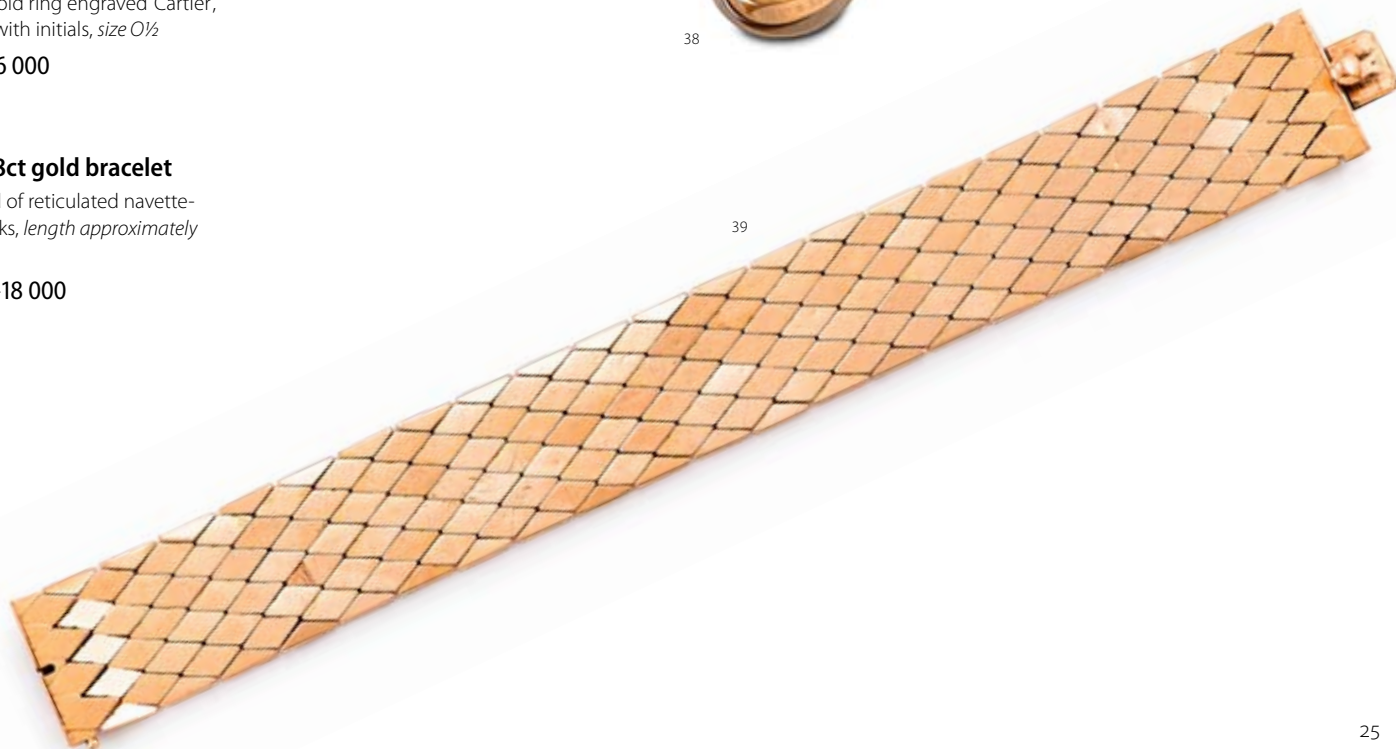
38

39

Italian 18ct gold bracelet

composed of reticulated navette-shaped links, *length approximately 200mm*

R15 000–18 000



39



40



40

Eight-row blister pearl necklace

divided by two spacers, length approximately 320mm; and a six-row cultured round pearl bracelet, similar, length approximately 185mm (2)

R15 000–20 000

41

Diamond ring

claw-set to the centre with a round brilliant-cut diamond weighing 2.0400 carats, size L

Accompanied by report number 170711127/116494 from EGL South Africa stating that the diamond weighing 2.0400 carats is H in colour and VS₂ in clarity

R90 000–95 000



41

42

Pair of amethyst and diamond chandelier earrings

each articulated millegrain frame set with diamonds weighing approximately 1.15 carats, suspending three faceted teardrop-shaped amethysts weighing approximately 7.00 carats, to a stylised flowerhead with fixed bale, post and buckle fitting, length approximately 50mm (2)

R12 000–15 000



42



43

**43
Diamond brooch**

designed as a flowerhead, set to the centre with a round brilliant-cut diamond weighing approximately 1.05 carats, within an openwork border of round brilliant-cut diamonds weighing approximately 4.00-4.20 carats, width approximately 35mm

R100 000–110 000

**44
Single stone diamond ring**

claw-set to the centre with a round brilliant-cut diamond weighing approximately 0.70 carat, size J

R30 000–35 000



44



45

**45
Diamond cluster ring**

claw-set to the centre with a radiant-cut diamond weighing 1.160 carats flanked by two pear-shaped diamonds weighing approximately 0.30 carat to six round brilliant-cut diamonds weighing approximately 0.72 carat, size N

Accompanied by report number 333782 from The Jewellery Council of South Africa stating that the diamond weighing 1.160 carats is J in colour and SI1 in clarity

R38 000–40 000

**46
Pair of diamond and amethyst ear pendants**

designed as an articulated line of millegrain-set round brilliant-cut diamonds weighing approximately 0.71 carat, to a diamond-faceted cap amethyst drop weighing approximately 17.20 carats, post and butterfly fittings, length approximately 75mm (2)

R15 000–18 000



46



47

47
Diamond and gold crucifix
 accented with five round brilliant-cut diamonds weighing approximately 1.75 carats, to a circular bale, *length approximately 38mm*

R25 000–30 000



48

48
Diamond and gold dress ring
 tube- and part-claw-set to the centre with a round brilliant-cut diamond weighing 1.530 carats, and five further round brilliant-cut diamonds weighing approximately 1.60 carats, *size M*

Accompanied by report number 375306 from The Jewellery Council of South Africa, stating that the diamond weighing 1.530 carats is I in colour and SI1 in clarity

R115 000–120 000



49

49
Diamond and gold bangle, 1970s
 of abstract outline, one terminal pavé-set with twenty-two eight-cut diamonds, brushed gold opposing terminal, *diameter approximately 55mm*

R6 000–7 000

50
Lady's 18ct gold Omega de Ville wristwatch, 1970s
 nickel lever jewelled movement, oval champagne dial, black enamel baton indexes, replaced crown, to an integral woven bracelet with adjustable Omega folding clasp, *length approximately 180mm, diameter approximately 18mm*

R8 000–10 000

51
Sapphire, turquoise and gold necklace
 composed of two graduated rows of round mix-cut sapphires weighing approximately 30.00 carats enclosing pear-shaped and tear-drop turquoise, *length approximately 485mm*

R60 000–65 000

52
Single stone diamond ring
 claw-set with a round brilliant-cut diamond weighing approximately 3.93 carats, *size N*

R500 000–550 000



50



52

51



53

53
**Lady's stainless steel Catwalk
 Baume & Mercier wristwatch,
 Ref. MV 045219**

automatic quartz movement, black dial with roman numeral and dot indexes, stainless steel Baume & Mercier bracelet with deployant clasp, *signed, diameter of bezel 24mm; accompanied by Baume & Mercier presentation case and outer card case*

R8 000–10 000

54
**Blue topaz and gold Tank
 Cartier ring, 1999**

set to the centre with a square-faceted-cut topaz weighing approximately 2.50-2.60 carats, *engraved 56 Cartier, 1999, L 91837, size P½*

R8 000–10 000

54



55



55
Diamond bracelet

composed of a series of compressed spherical links set with thirty-three round brilliant-cut diamonds weighing approximately 1.80 carats, *length approximately 185mm*

R15 000–18 000

56
**Blue topaz and ceramic
 Chandra Bulgari ring**

the collet-set oval cabochon-cut topaz mounted on a carved white ceramic ring, *signed Bulgari, size M*

R15 000–20 000

56



57
Diamond dress ring

claw-set to the centre with a round brilliant-cut diamond weighing 1.8227 carats, the shoulders set with nine baguette-cut diamonds weighing approximately 0.80 carat, *size J½*

Accompanied by report number 60401072 from EGL South Africa stating that the diamond weighing 1.8227 carats is G in colour and VS1 in clarity

R145 000–150 000

57





58
Aquamarine and diamond pendant

the emerald-cut claw-set aquamarine weighing approximately 40 carats, the open frame with a tube-set round brilliant-cut diamond weighing 0.08 carat, with fixed suspension loop, *length approximately 27mm*

R50 000–55 000



59
Aquamarine and gold ring

claw-set with a rhomboid aquamarine weighing approximately 4.50–5.00 carats, to a part-ribbed shank, *size M½*

R15 000–18 000

60
Diamond pendant

tube-set with a round brilliant-cut diamond weighing 1.001 carats, to an 18ct white gold choker

Accompanied by report number 010150741 from DIA South Africa stating that the diamond weighing 1.001 carats is G in colour and VS1 in clarity

R55 000–60 000





61

**61
Italian 18ct gold and
diamond bangle**

composed of five pink, white and yellow gold flattened-rope bands set to half-crescent terminals claw-set with ten round brilliant-cut diamonds weighing approximately 1.00 carat, *inner circumference approximately 175mm*

R30 000–32 000

**62
Silver and gold bracelet,
Charles Greig**

the silver curb-link chain set to a gold ring and bar clasp with cabochon-cut garnet terminals, T-bar clasp, *length approximately 205mm*

R6 000–8 000

62



63

**63
Diamond and gold dress ring**

claw-set to the centre with an oval-cut diamond weighing 1.41 carats, the shoulders set with two pear-shaped diamonds weighing approximately 0.62 carat, *size M½*

Accompanied by certificate number 2628242228 from EGL South Africa stating that the diamond weighing 1.41 carats is Light Yellow in colour and SI1 in clarity

R60 000–65 000



**64
Lady's 18ct yellow gold and
stainless steel Oyster Perpetual
Datejust Rolex wristwatch,
Ref. 78273**

automatic jewelled-lever movement, white dial, roman numerals, magnified date aperture at 3 o'clock, yellow gold milled bezel, screw-down crown, water resistant at 100 metres (330 feet), stainless steel case, stainless steel Rolex Jubilee bracelet with 18ct yellow gold centre links, *signed, diameter of bezel 25mm; cased and accompanied by Rolex booklet and punched Rolex certificate stamped 'A789500'; outer card case*

R40 000–60 000

64





65

Italian 18ct gold compact

of textured yellow and white gold basketweave pattern, enclosing a mirror and powder compartment, *length approximately 65mm*; an 18ct gold double-sided photograph frame, *length approximately 50mm*; an 18ct gold coin case, *length approximately 40mm*; an 18ct gold lipstick case, *length approximately 60mm*; an 18ct gold pen and pencil; and a silver- and gold-mounted heart-shaped key-ring, *length approximately 78mm (7)*

R75 000–80 000



66
**Gold repoussé and filigree
 'makara' necklace and a pair of
 bracelets, en suite, South Indian,
 19th century**

the filigree necklace with a pair of fierce open-mouthed makara head terminals contesting a 'jewel', cabochon ruby eyes, the screw fitting with lotus petal finial, the bracelets can be combined and worn as a necklace, *some distress to the filigree, lacking two cabochon ruby eyes, necklace length approximately 560mm, the first bracelet length approximately 195mm, the second length approximately 200mm* (3)

R15 000–20 000

67
Gold dress ring

centred by a gold nugget to an openwork band, *size P*

R5 000–6 000



68
Single diamond ring

claw-set to the centre with a round brilliant-cut diamond weighing 2,5160 carats, *size N*

Accompanied by certificate number 170711124/116494 from EGL South Africa stating that the diamond weighing 2,5160 carats is J in colour and VS1 in clarity

R100 000–110 000

69
**Italian ruby and gold bracelet,
 1970s**

the centre designed with five flowerheads and foliage heightened with twenty-one claw-set rubies weighing approximately 1,70 carats, to a fancy textured bracelet, *length approximately 185mm*

R25 000–28 000





70

70
Ruby, diamond and gold bracelet, 1970s

the articulated bracelet composed of sprays of foliage heightened with rows of eight- and round brilliant-cut diamonds weighing approximately 1.00 carat and rubies weighing approximately 4.50 carats, *length approximately 183mm*

R40 000–50 000



71

71
Ruby and diamond ring

claw-set to the centre with a round-cut ruby enclosed by eight claw-set eight-cut diamonds weighing approximately 0.25 carat, *size L*

R2 000–2 500



72

72
Italian 18ct gold bracelet

woven and twisted, accented by two gold balls, *length approximately 190mm*

R12 000–15 000

73
Ruby and diamond dress ring

tube-set with a pear-shaped ruby weighing approximately 1.40 carats and a pear-shaped diamond weighing approximately 0.89 carat, *size O*

R25 000–30 000

73



74

74

Seven-stone diamond ring

set with seven graduated cushion-cut diamonds weighing approximately 2.47 carats, *size M*

R45 000–50 000



75

75

Emerald, diamond and gold necklace

set to the centre with a baguette-cut emerald weighing approximately 1.20 carats, to a trapezoid mount, set with six pavé-set round brilliant-cut diamonds weighing approximately 0.34 carat, to a snake-link chain, *length approximately 400mm*

R20 000–25 000



76

76

Emerald and diamond dress ring

claw-set to the centre with an oval-cut emerald weighing approximately 1.80-2.00 carats enclosed by ten round brilliant-cut diamonds weighing approximately 1.50 carats, *size M*

R35 000–40 000

77



77

Diamond single-stone ring

claw-set with a round brilliant-cut diamond weighing 1.62 carats, size *N*

Accompanied by certificate number 2247086682 from the Gemmology Institute of Southern Africa stating that the diamond weighing 1.62 carats is D in color and VVS2 in clarity

R165 000–170 000

78



78

Ruby, diamond and gold necklace

of cross-over design, the herringbone gold chain accented with five claw-set rubies weighing approximately 0.40 carat, intertwined with round brilliant-cut diamond-set ribbons weighing approximately 0.65 carat, length approximately 430mm

R35 000–40 000

79



79

Diamond dress ring

tube-set to the centre with a round brilliant-cut diamond weighing approximately 1.35 carats enclosed by a rope border and surrounded by eighteen round brilliant-cut diamonds weighing approximately 0.63 carat, size *M½*

R95 000–110 000



80
Italian 18ct gold bracelet
composed of flattened C-links, *length approximately 205mm*
R10 000–12 000

81
14ct gold bracelet
designed with textured and pierced interlocking links, *length approximately 200mm*
R10 000–15 000

82
Ruby, emerald and gold brooch/pendant
designed as a frog, the eyes collet-set with two cabochon-cut emeralds and the body collet-set with five cabochon-cut rubies, *length approximately 25mm*
R5 000–7 000

83
Ruby, sapphire, diamond and gold pendant
designed as a jester, collet-set with an oval cabochon-cut blue sapphire and four similarly-cut round rubies, the articulated figure's collar, eyes and shoes set with eight-cut diamonds, set to a bale highlighted with three eight-cut diamonds, *length approximately 58mm*
R8 000–10 000



84

84
Ruby and sapphire gold ring,
Diego Percossi Papi, with
import marks for London, 2000

collet-set to the centre with alternating round-cut rubies and oval-cut sapphires highlighted with rope-twist and beaded borders, *size Q½*

R12 000–15 000



85

85
Sapphire, diamond and
gold ring

designed with three elephants inlaid with diamonds and blue sapphires to an open frame part-set with two rows of calibre-cut blue sapphires, *size O*

R4 000–6 000

86
Gold and lapis lazuli chain,
Carl Bucherer, 1970s

composed of three chains designed with cable and rolo links heightened with a curved connector link, to three larger links and a collet-set lapis lazuli bead, *applied rectangular plaque engraved with the initials 'CB', cased, length approximately 610mm*

R28 000–30 000



86



87

87
Gold and ruby ring,
Sweden, 1930

collet-set with a faceted synthetic ruby weighing approximately 4.50 carats, *size Q*

R6 000–8 000

88
Italian gold bangle

designed as a series of three coloured gold elephants each with collet-set sapphire eyes, to an open frame-work, *inner circumference approximately 180mm*

R7 000–9 000



88



90



89

89
Sapphire and gold ring
 of abstract form set to the centre with a cabochon-cut sapphire, the reverse engraved 'I.T.' and the Roman numeral 'IX', size *M*
 R9 000–12 000

90
18ct gold necklace
 composed of a series of bamboo-shaped links, length approximately 1080mm
 R20 000–22 000



91

91
Lady's stainless steel and 18ct gold Santos Galbee Cartier wristwatch, Ref. 090235971
 automatic quartz movement, white dial with roman numerals and blue sword-shaped hands, faceted sapphire-top crown, water resistant to 30 metres, stainless steel case, stainless steel and 18ct gold Cartier bracelet with deployant clasp, signed, diameter of bezel 28mm
 R15 000–20 000



92

92
9ct gold bangle
 inner circumference approximately 220mm
 R12 000–15 000



93

Diamond and gold necklace

collet-set to the centre with a round brilliant-cut diamond enclosed by a square plaque pavé-set with diamonds flanked by ribbed and diamond-set shoulders weighing approximately 2.50-3.00 carats, to a flattened curb-link chain, length approximately 405mm

R140 000–160 000



94

94

Diamond dress ring

collet-set to the centre with a round brilliant-cut diamond weighing 3.1260 carats, the shoulders pavé-set with eighteen round brilliant-cut diamonds weighing approximately 0.55 carat to a part-ribbed shank, size N½

Accompanied by report number 90102962/57010 from EGL South Africa stating that the diamond weighing 3.1260 carats is R in colour and SI1 in clarity

R88 000–90 000



95

95

Pair of diamond earrings

each claw-set with a cushion modified brilliant-cut diamond weighing 2.02 carats and 2.00 carats, set with fancy yellow brilliant-cut diamonds weighing approximately 0.75 carat, to a stepped octagonal frame set with round brilliant-cut diamonds weighing 0.95 carat, to a part diamond-set bale, hoop fittings, length approximately 25mm (2)

Accompanied by certificate number 2135561008 from GIA stating that the diamond weighing 2.02 carats is fancy yellow in colour and VS2 in clarity

Accompanied by certificate number 32433802 from GIA stating that the diamond weighing 2.00 carats is natural fancy yellow in colour and SW1 in clarity

R140 000–145 000



96

96
Gold charm bracelet
suspended with twelve detachable
charms, *length approximately 180mm*
R6 000–8 000



97

98

98
9ct pink gold chain,
Birmingham, 1901
composed of Figaro links to a dog-clip
clasp, *length approximately 1130mm*
R5 000–6 000



99

97
9ct gold bracelet
composed of a series of brick-links,
length approximately 190mm
R12 000–15 000

99
Ruby and gold bangle
collet-set with seven pear-shaped
rubies weighing approximately 2:00-
2:20 carats, *diameter 60mm*
R8 000–10 000



100



101

100

Lady's 9ct gold cigarette case, Mappin & Webb, London, 1920

the front engraved with the initials 'MKW', with loop fitting and chain, length approximately 77mm

R10 000–12 000

101

Late Victorian citrine necklace

collet- and claw-set with oval graduated pear-shaped citrines, weighing approximately 100-110 carats, with three pear-shaped drops, length approximately 420mm

R6 000–8 000

102

Italian gold and madeira citrine quartz dress ring

claw-set with a rectangular faceted-cut madeira citrine quartz weighing approximately 56.00 carats, set to an openwork five-strand rope-and-ball shank, size V

R18 000–20 000



102



103

**103
Gentleman's 18ct yellow
gold Omega Constellation
wristwatch, Ref. 168005/6 SC**

automatic nickel lever movement, pie-pan champagne dial, black enamel baton indexes, date aperture at 3 o'clock, ten-sided crown, medallion case back, with Omega leather strap and stainless steel buckle, *diameter of bezel 30mm*

R40 000–60 000

**104
Diamond ring**

collet-set with a round old-cut diamond weighing approximately 1.20 carats, *size J½*

R54 000–56 000



104

**105
Late Victorian 9ct gold
fob chain**

composed of a series of curb links, to a dog-nose clasp and T-bar, *length approximately 415mm*

R4 000–5 000

**106
14ct gold hunting cased keyless
lever watch, Elgin Watch Co,
No. 5038480**

matt gilt lever movement, bi-metallic compensation balance, numbered cuvette, enamel dial with roman numerals and subsidiary seconds dial, blued steel hands, *signed, the movement numbered 10460050*, the case engraved with foliate motifs and initials, *42mm*

R20 000–25 000



105



106



107

107
Edwardian mother-of-pearl and gold gentleman's dress set

comprising four buttons, a pair of cufflinks and a pair of studs, of hexagonal form, each set to the centre with a pearl, the cufflinks with chain connectors; *cased (8)*

Pearls untested and as such unwarranted

R2 000–3 000



108

108
Victorian gold muff chain

length approximately 820mm

R3 500–4 000



109

109
Mother-of-pearl and diamond dress ring, Kabana, New Mexico

set with a marquise-shaped mother-of-pearl plaque enhanced with round brilliant-cut diamonds, the shoulders millegrain-set with twelve round brilliant-cut diamonds, *size P*

R5 000–7 000

110
Gold bracelet

with curb links to a padlock clasp, *length approximately 230mm*

R20 000–22 000



110



111



112



113

111
Pair of silver and gold cufflinks,
designed by Cecil Skotnes, 1974,
manufactured by Kurt Donau

one designed with the abstract figure of a man, the other with a woman against a hammered ground, to a T-bar connector, signed 'C. Skotnes, 1974', maker's initials KD, length approximately 350mm (2)

R8 000–10 000

112
Pair of 9ct gold cufflinks

circular, each engraved with radiating striations from the asymmetrically recessed-set 1865 Mexico 0.02 troy oz coin of Emperor Maximiliano, to a T-bar connector, length approximately 30mm (2)

R5 000–6 000

113
Pair of 9ct gold collar stays,
Kurt Jobst, 1972

the front engraved with the initials 'EM', the reverse with the date '1972', length approximately 58mm; and an 18ct gold toothpick case, Kurt Jobst, with pierced terminal, length approximately 62mm (3)

R4 000–6 000



114

**114
Lady's 18ct gold keyless lever
watch, Ulysse Nardin,
No. B 3960**

nickle lever movement, bi-metallic compensation balance, numbered cuvette, enamel dial with roman numerals and subsidiary seconds dial, pierced hands, *signed, the movement numbered 30893*, with engine-turned case, 25mm
R12 000–15 000



115

**115
Five-coin gold bracelet**

set with five one-ounce fine gold Krugerrands, 1974, *length approximately 220mm*
R90 000–100 000

**116
Jaeger-LeCoultre brass
travelling alarm clock, 1950s**

the silvered dial with baton and dot indexes, eight-day movement, with ostrich case, *stamped 130478*, approximate dial width 45mm
R10 000–12 000



116



117

117

18ct gold necklace

composed of a series of oval and rounded links, *length approximately 810mm*

R22 000–24 000

118

Chinese jade brooch

oval, pierced and carved with a gourd amongst peonies, *length approximately 50mm*

R1 000–1 500



119

119

Coral and gold ring

mushroom-shaped, *size M*

R3 500–4 500

*This lot is not suitable for export.

120

Chinese jade and gold brooch

circular, the pierced green jade plaque carved with a pair of fish and a bat to a claw-set gold frame, *width approximately 55mm*

R3 000–4 000



118



120

121

Chinese white jade pendant, late 19th/early 20th century

carved and pierced with a monkey clutching a gourd, with cord and mother-of-pearl bead toggle, *length approximately 37mm*

R3 000–4 000



121



122

122
Pair of Chinese jade, watermelon tourmaline and seed pearl pendant earrings, retailed by Spink & Son Ltd

each with a watermelon tourmaline drop carved in the form of a bell surmounted by a dragon, to a seed pearl connector, to a green jade plaque carved with a fish and a dog's head, to a watermelon tourmaline surmount enclosed by a dragon, hook fittings, *length approximately 70mm, cased, stamped SPINK & SON, 5-7 KING STREET, ST JAMES'S, LONDON, S.W. 1 (2)*

R15 000–20 000



123

123
Jade bead necklace

composed of a graduated line of beads measuring approximately 5mm - 8.8mm, *length approximately 740mm*

R12 000–15 000

124
Jade and gold bracelet

composed of five graduated collet-set marquise-shaped green jade plaques set to a conforming open frame and united by four links heightened by five petal flowerheads, *length approximately 185mm*

R5 000–7 000



124



125

125
A Jorgen Jensen pewter pendant, Denmark, circa 1970s

the pendant with six concave lobes, each set with amethyst-coloured glass cabochons set to a rod, with silver chain, engraved 'PEWTER, Georg Jensen, DENMARK', length approximately 73mm; and a Georg Jensen pewter bracelet, similar, set with seven glass cabochons, length approximately 180mm (2)

R1 500–2 000

125



126

126
A Georg Jensen silver cuff bracelet No. 203, by Vivianna Torun, Denmark, 1960s, .925 sterling

engraved 'GEORG JENSEN, TORUN', inner circumference approximately 65mm (2)

R4 000–6 000



127

**A Georg Jensen silver bangle,
Denmark, 1970s, .925 sterling**

engraved 'GEORG JENSEN, 925 S,
DENMARK, 188', inner circumference
approximately 60mm

R4 000–6 000

128

**A Georg Jensen silver 'Bulow-
Hube' necklace and pendant, by
Vivianna Torun, Denmark, circa
1967, .925 sterling**

the pendant set with cabochon-cut
rutilated quartz, engraved 'GEORG
JENSEN, TORUN'; necklace inner
circumference approximately 420mm (2)

R8 000–10 000



127

128



129

**A Georg Jensen silver necklace,
by Astrid Fog, Denmark, circa
1969, .925 sterling**

engraved 'GEORG JENSEN, 925 S,
DENMARK, 175', length approximately
1060mm

R4 000–6 000

130

**A Georg Jensen silver 'Mobius'
pendant/brooch, by Vivianna
Torun, Denmark, 1970s, .925
sterling**

engraved 'GEORG JENSEN, TORUN, 925
DENMARK, 374', 62mm wide

R2 000–3 000



131

131
Gentleman's stainless steel Chronoswiss Delphis wristwatch, circa 2002, Ref. 0146

automatic 29 jewel calibre movement, silver guilloché dial with digital jump hours, retrograde minutes and subsidiary seconds at 6 o'clock, date aperture at 12 o'clock, with onion crown, stainless steel milled-edge case and screw-down crystal case back, leather strap with Chronoswiss buckle, diameter of bezel 35mm; accompanied by Chronoswiss lacquer and velvet-lined presentation case and outer card case, with guarantee

R60 000–70 000



132

132
Gentleman's 18ct yellow gold Cartier Pasha wristwatch, Ref. M 100251817501

automatic jewelled lever movement, champagne dial, Arabic numerals and baton markers, magnified aperture for date at 4 o'clock, yellow gold smooth bezel, the crown cover set with a cabochon-cut sapphire, water resistant at 100 metres (330 feet), 18ct yellow gold case, the side applied with the initials 'JL', set with round brilliant-cut diamonds, black leather strap with 18ct yellow gold Cartier buckle, the case engraved 'EXCLUSIVE J.L.', two diamonds missing from initials, diameter of bezel 28mm; accompanied by a Cartier soft case

R80 000–85 000



133

**133
Lady's 18ct pink gold and
stainless steel Oyster Perpetual
Datejust Rolex wristwatch,
Ref. 116231**

automatic jewelled lever movement, pink gold dial, luminescent baton and roman numerals, aperture for day, magnified aperture for date at 3 o'clock, pink gold milled bezel, screw-down crown, water resistant at 100 metres (330 feet), stainless steel case, stainless steel Rolex bracelet with 18ct pink gold centre links, *signed, diameter of bezel 22mm; accompanied by Rolex booklet and guarantee*

R40 000–50 000



134

**134
Gentleman's 18ct pink gold and
stainless steel Oyster Perpetual
Datejust Rolex wristwatch,
Ref. 178271**

automatic jewelled lever movement, pink gold dial, luminescent baton and roman numerals, aperture for day, magnified aperture for date at 3 o'clock, pink gold milled bezel, screw-down crown, water resistant at 100 metres (330 feet), stainless steel case, stainless steel Rolex bracelet with 18ct pink gold centre links, *signed, diameter of bezel 30mm; accompanied by Rolex booklet and guarantee*

R70 000–80 000



135

**135
Gentleman's 18ct gold Oyster
Quartz Day-Date Rolex
wristwatch, circa 1980,
Ref. 19018**

automatic jewelled lever quartz movement, champagne dial with applied baton indexes, centre seconds, aperture for day, magnified aperture for date at 3 o'clock, screw-down crown with rapid date change, milled bezel, Oyster case, case, dial and movement signed, 18ct gold Rolex bracelet with folding clasp, signed, diameter of bezel 34mm; accompanied by punched Rolex certificate

R100 000–110 000



136

**136
Gentleman's 18ct yellow gold
Memovox Automatic Jaeger-
LeCoultre wristwatch, circa
1970, Ref. 1130808**

automatic nickel lever movement, champagne dial with central dial for alarm indication, black and gold baton indexes, aperture for date at 3 o'clock, 18ct yellow gold case, winder for movement and alarm, associated leather strap, diameter of bezel 27mm

R50 000–70 000



137

**137
Gentleman's 18ct pink gold
Santos-Dumont Cartier
wristwatch, circa 2008,
Ref. 2650 – 823402 CE**

manual winding movement, grey satin-brushed dial, roman numerals, pink gold smooth bezel, screw-down crown set with a faceted sapphire, water resistant, 18ct pink gold case, alligator strap with 18ct pink gold Cartier deployant clasp, sapphire crown damaged, signed, diameter of bezel 27mm; accompanied by Cartier presentation case and outer card case

R130 000–135 000

138

14ct gold hunting cased keyless lever watch, JWC, No. 306718

matte gilt lever movement with wolf's tooth winding, bi-metallic compensation balance, polished cuvette, enamel dial with arabic numerals and subsidiary seconds dial, gilt hands, the case engraved with the initials 'AK', the inside cover engraved with an inscription 'Für Erinnerung an den 18 Oktober 1913 von Deiner Schnester Marie', the movement stamped No. 285546 with the initials 'JWC', 42mm; and an 18ct gold figaro chain, length approximately 420mm (2)

R30 000–35 000



138

139

18ct gold hunting cased keyless watch, JW Benson, No. 866, Sheffield, 1909

the three-quarter gilt plate with nickel lever movement, bi-metallic compensation balance, enamel dial with roman numerals, subsidiary seconds dial, with blued steel hands, the case, dial and movement signed, engine-turned case, the front with vacant cartouche, the gilt plate inscribed 'J.W. Benson, Ludgate Hill, London, BEST LONDON MAKE TO H.M. THE QUEEN', 40mm

R15 000–20 000



139

140

A gold mounted scent bottle, possibly French, late 19th century

with engraved hinged cover and collar enclosing a glass stopper, the tapering body cut with printies to an oval footrim, chip to footrim, 10cm high

R2 000–2 500

141

A Victorian gold sliding propelling pencil, Sampson Mordan & Co, London, late 19th century

the barrel engraved with stylized foliage, the seal terminal inset with a yellow stone matrix, 12,3cm long; cased, retailed by T. West, Goldsmith, 48 Ladies Street, Near St Pauls

R3 500–4 000



140



141

142

143

142

**A Victorian 18ct gold sliding propelling pencil,
Sampson Mordan & Co, London, late 19th century**

with ribbed barrel and engraved foliate thumbpiece, the seal terminal inset with a bloodstone matrix, *11,6cm long*; another, with engine-turned barrel, the seal terminal inset with a quartz matrix, *stamped 'S. MORDAN & CO', 11,1cm long*; and another, similarly decorated, *stamped 'S. MORDAN & CO', 10,5cm long* (3)

R4 000–6 000

143

A Victorian 16ct gold and enamel sliding propelling pencil

the barrel enamelled with a putto holding a butterfly against a black ground, the ribbed shaft with suspension carrying loop, *enamel chipped, 10,5cm long*; an American 9ct gold sliding propelling pencil, Aikin Lambert & Co, circa 1890, engine-turned decoration, *11,8cm long*; a Victorian 9ct gold sliding propelling pencil, Constantine & Floyd, Birmingham, 1897, with engine-turned decoration, the seal terminal inset with a yellow stone matrix, *10,4cm long*; and a Victorian 9ct gold penknife and propelling pencil, probably James Allen, Birmingham, 1894, with engraved shaft and suspension carrying loop, *7cm long* (4)

R4 000–6 000

144

Three late Victorian carved carnelian agate and silvered-metal seals

in sizes, each with silver terminal set with carved matrixes, *the tallest 5,5cm high*; and two further examples, with gilt-metal and silver-engraved terminals, *the taller 7,5cm high* (5)

R4 000–6 000



144

145

A jewelled silver-gilt and blue guilloché enamel bell-push, possibly Austrian, maker's initials 'RL', .900 standard

the compressed bulbous body with beaded border terminating in a cabochon blue-stone push-piece, *4,5cm high*

R4 000–6 000



145

146

A French metal-mounted enamel box and cover, 19th century

of serpentine outline, the cover painted with a bird before a tree within a cartouche enclosed by a blue-scale ground, the body similarly decorated with sprays of summer flowers, *underglaze-blue initials, 'S.P.' and applied paper retailer's label for R.Leroy, 6cm high, 13cm wide*; another, rectangular, the hinged cover hand-painted with a scene of ladies being serenaded, the base and the body decorated with pastoral scenes against a white ground, *restored, 5cm high, 13,5cm wide*; another, hand-painted with sprays of flowers, the hinged domed cover decorated with a courting couple, *pseudo-Lille mark 'LILLE 1767', 4cm high, 8cm wide*; another, hand-painted with a courting couple and sprays of flowers, *distortion to the hinge on the one side, firing hairline cracks to the interior, restored, 3cm high, 7cm wide*; and a circular example with gilt-metal-lined interior, the body and hinged cover decorated with pastoral scenes, *gilding worn, 2,5cm high, 6,5cm diameter* (5)

R4 000–6 000



146

147

A French gilt-metal-mounted porcelain covered box, probably Samson, 19th century

the domed cover and front painted with chinoiserie cartouches enclosed by a stippled blue ground, *restored*, 9cm high, 15cm wide; another, Samson, Paris, late 19th century, painted in the Chinese manner, the cover with an armorial, the sides with flowers and *bianco-sopra-bianco* highlights, 3cm high, 4,5cm diameter; a French 'Sèvres' gilt-metal-mounted porcelain box and cover, the domed cover painted with a cartouche of summer flowers, enclosed by gilt and blue borders, *overpainted pseudo-Sèvres blue-glazed mark*, 3,5cm high, 14,5cm wide; and another French example, the domed cover painted with a spray of summer flowers enclosed by a maroon ground with gilt highlights, *iron-red inscription to the base*, 4cm high, 10,5cm wide (4)

R4 000–6 000



147



148

148

A French metal-mounted faience box and cover, Joseph Hannong, Strasbourg, circa 1770-1775

of wavy outline, the cover painted with a bird perched on a blossoming branch against a cream ground, the body painted with insects and rural scenes, *underglaze-blue-painted initials 'JH 23'*; one hinge is loose, 5,7cm high, 10,5cm wide

R5 000–7 000



149



150

149

A gilt-metal-mounted porcelain box and cover, 19th century

in the Meissen style, of bombé outline, the cover painted with a courting couple enclosed by a gilt and pink diaper border, the base painted with sprays of summer flowers, *underglaze-blue crossed-swords mark*, 5,4cm high, 10cm wide

R4 000–6 000

150

Two gilt-metal-mounted and enamel oval boxes and covers, early 19th century

each painted with pastoral scenes enclosed by c-scroll gilt borders against an apple-green ground, *both with restorations*, the taller 4cm high, 18,5cm wide; a Staffordshire gilt-metal-mounted enamel box and cover, inscribed 'The Hobby

Horse' and with two gentlemen on their bicycles, the body and base enamelled in yellow, *restored*, 2,5cm high, 4,5cm wide; and a gilt-metal-mounted enamel box and cover, possibly Bilston, the hinged cover painted with the proverb 'A Sound Conscience Is A Wall of Brass', the body and base enamelled in blue, *restored*, 2cm high, 4,5cm wide (4)

R3 000–4 000



151

151
A cold-painted bronze starling,
Franz Bergmann, Vienna, late
19th/early 20th century

realistically rendered, *impressed signature and the initial 'A'*; 11cm high; a cold-painted bronze kingfisher, probably Vienna, late 19th/early 20th century, 9,5cm high; and a cold-painted bronze owl and marble ashtray, Franz Bergmann, Vienna, late 19th/early 20th century, *the marble damaged, the base of the owl with impressed signature, the owl 5cm high* (3)

R8 000–10 000



152

152
A group of seven cold-painted
bronze roosters, hens and
chicks, probably Vienna, late
19th/early 20th century

the tallest 4cm high (7)

R4 000–6 000



153

153
A group of four cold-painted
bronze animals, probably
Vienna, late 19th/early
20th century

representing characters from Beatrix Potter including a figure of Mrs Tiddlemouse, Peter Rabbit, Squirrel Nutkin, *the tallest 3,7cm high* (4)

R6 000–9 000

154

**Two cold-painted bronze
contesting cats, Franz
Bergmann, Vienna, late 19th/
early 20th century**

*stamped 'GESCHUTZT', 4,9cm high; two
cold-painted bronze figures of mice,
probably Vienna, the larger 3,8cm long;
and a figure of a rabbit, 1cm high (4)*

R4 000–6 000



154

155

**A group of six cold-painted
bronze animals, probably
Vienna, late 19th/early
20th century**

*comprising an owl, 2,2cm high, a
bulldog, 2,2cm high, an elephant,
1,8cm high, and three buck, the tallest
2,3cm high (6)*

R6 000–8 000



155

156

**Two cold-painted bronze
lizards, probably Vienna, late
19th/early 20th century**

*the longer 6,2cm long; a butterfly, some
enamel and gilt loss, 9,5cm wide; a pair
of pheasants, the taller 1,8cm high; and a
frog, 0,7cm high (6)*

R9 000–12 000



156



157

157
A Chinese carved coral figure of a boy,
early 20th century

standing holding a peony, *5cm high*; and a carved hardwood stand (2)

R4 000–6 000

*This lot is not suitable for export.



158

158
A group of four Chinese Mandarin
gilt-metal-mounted hat finials, late
19th/early 20th century

comprising; a milky white glass example of the Sixth Rank; a transparent blue glass example of the Third Rank; a transparent glass example of the Fifth Rank; and a coral-coloured example, carved with a *shou* character, each with gilt-metal and filigree base, *the tallest 6cm high* (4)

R5 000–7 000

159
Two Chinese cloisonné enamel snuff
bottles, late 19th/early 20th century

each decorated with pink and white flowers against a blue ground, raised on an oval footrim, similarly decorated stoppers, *one snuff spoon detached, the taller 7,3cm high* (2)

R4 000–6 000



159

160
A Chinese inside-painted glass snuff
bottle, late 19th/early 20th century

the front painted with a phoenix amongst chrysanthemums, the reverse painted with a panda, bamboo and blossom, the shoulders carved with yellow mask-and-ring handles, yellow-line borders, raised on an oval footrim, *5,7cm high*; and a Chinese blue glass overlay snuff bottle, carved with contesting dragons above stylized waves, raised on an oval footrim, the neck with metal collar, *6,5cm high* (2)

R8 000–10 000



160

161

A Chinese inside-painted agate snuff bottle, late 19th/early 20th century

the front painted with a pair of ducks, the reverse painted with lily pads and flowers, the sides carved with ring-handles, with coral stopper, 5,3cm

R4 000–6 000

*This lot is not suitable for export.



161

162

Three Chinese overlay snowflake glass snuff bottles, late 19th/early 20th century

each of ovoid form, carved with stylized foliate and architectural motifs, and scholar's objects, raised on a shallow oval footrim, with hardstone stopper, lacking one snuff spoon, the rim with minor chips, the tallest 6,7cm high (3)

R12 000–15 000



162

163

A Chinese pink and green overlay glass snuff bottle and stopper, late Qing Dynasty

of flattened ovoid form, carved with two stylized peonies and foliage against a milky-white ground, with pearl, coral and glass stopper, 6cm high

R4 000–6 000

*This lot is not suitable for export.



163

164

Two Chinese agate snuff bottles, late Qing Dynasty

the first oval, of white tone with pale-green jade stopper, the second in the form of a gourd, the front carved with further gourds and foliage, with green jade stopper; the taller 6cm high (2)

R8 000–10 000



164

165

**A Chinese jade snuff bottle,
late 19th/early 20th century**

the front and reverse carved with
a stylized *taotie* mask, raised on a
rectangular footrim, with green jade
stopper, 6cm high

R5 000–7 000



165

166

**A Chinese soldalite snuff bottle
and stopper, late Qing Dynasty**

of flattened ovoid form, carved with
prunus blossoms, 4,3cm high, a carved
amethyst snuff bottle and stopper, with
lily pad, bud and stylized leaves, 5,5cm
high; and another hardstone example,
carved with stylized lotus leaves, 7cm
high (3)

R8 000–10 000



166

167

**A Chinese turquoise snuff
bottle, late Qing Dynasty**

in the form of a ribbed gourd carved
with vines, with leaf-capped stopper,
chip to one leaf, 5,3cm high; and another
of lapis lazuli of flattened ovoid form,
carved with a maiden beneath a tree,
the reverse with a phoenix before a
rocky outcrop, raised on a low footrim,
5,9cm high (2)

R10 000–12 000



167

168

168

**A Chinese lapis lazuli snuff
bottle, late Qing Dynasty**

carved in the form of a scaly fish with
bifurcating tail emerging from stylized
waves, carved ball stopper, 6,8cm high

R4 000–6 000

169

**A Chinese jade snuff bottle,
late Qing Dynasty**

carved in the form of a scaly fish with
a crab clinging to one side, coral bud-
shaped stopper, 8,5cm long

R3 000–4 000

*This lot is not suitable for export.



170

**A Chinese mother-of-pearl
snuff bottle, late Qing Dynasty**

the front carved with an Immortal, with
coral and metal stopper, 6,8cm high

R6 000–8 000

*This lot is not suitable for export.



171

**A Chinese porcelain snuff
bottle, late Qing Dynasty**

bottle-shaped, painted in copper-red
with a sage before a rocky outcrop
between blue-line borders, with coral
stopper, *underglaze-blue four-character
mark, chips to the shoulder, 7,8cm high*;
and another, blue and white, decorated
with scrolls and peonies with iron-red
highlights, agate stopper, *minor chips to
rim and base, 7,8cm high (2)*

R2 500–3 000

*This lot is not suitable for export.



172

**A Chinese porcelain snuff
bottle, late 19th /early 20th
century**

bottle-shaped, painted with a figural
group beside a willow tree, *painted
four-character mark, minor chips to base,
7,6cm high*

R3 000–4 000



173

173
**A Chinese blue and white
 porcelain snuff bottle, late
 19th/early 20th century**

bottle-shaped, painted with horses
 and monkeys in a rocky landscape,
 highlighted in copper-red, with coral
 stopper, 6cm high

R3 000–4 000

*This lot is not suitable for export.



174

174
**A Chinese ivory snuff bottle,
 late 19th/early 20th century**

the front carved with three young
 boys, and the reverse with four storks
 amongst pine branches, bell-shaped
 ivory stopper, 8,3cm high; and another
 carved with two figures, the reverse
 with a twelve-character inscription,
 signed, 8,5cm high (2)

R4 000–6 000

*This lot is not suitable for export.



175

175
**A Chinese ivory, jade and
 turquoise snuff bottle,
 late 19th/early 20th century**

the front and reverse set with a pierced
 jade plaque carved in the form of a
 pavilion and flower arrangement within
 a turquoise beaded border, the body
 carved in low relief with stylized floral
 motifs, 8,1cm high

R4 000–6 000

*This lot is not suitable for export.

176

**A Chinese ivory card case,
19th century**

the front and reverse carved in relief with 'Napoleon's House on St Helena' and 'Napoleon's Tomb', within borders of carved foliage, the cover carved with a figural scene of Europeans having tea and playing with a dog, *11,5cm high*

R10 000–12 000

*This lot is not suitable for export.



176



177

177

**A Chinese ivory card case,
19th century**

carved with figures at leisure in a terraced garden before pavilions amongst pine, blossom, prunus and willow trees, the front with an oval cartouche carved with a crest, *repair to the cover, 11,6cm high*

R6 000–8 000

*This lot is not suitable for export.



178



179

178

**A Chinese ivory card case,
19th century**

carved with figures at leisure in a terraced garden before pavilions, the front with a vacant oval cartouche, *repair, 11,2cm high*

R8 000–10 000

*This lot is not suitable for export.

179

**A small Chinese ivory card case,
19th century**

the front carved with a bird beneath a tree bordered by foliage and buildings, the reverse carved with an architectural scene before a mountainous landscape, the cover carved in relief with a figural group of Europeans, *the cover repaired, 8,5cm high*

R5 000–7 000

*This lot is not suitable for export.



180

180
A Chinese pierced and carved ivory pleasure boat, 20th century

with figures on the upper and lower decks, the top and the back carved in relief with peonies, *damaged, lacking some hinged shutters, 5,4cm high, 10cm long*

R4 000–6 000

*This lot is not suitable for export.



181

181
A Chinese export ivory puzzle ball and stand, early 20th century

the concentric pierced ball carved in relief with dragons amongst clouds enclosing multiple concentric balls, raised on a pierced domed similarly carved stand, surmounted by a maiden seated on a rocky outcrop beneath an umbrella of blossoms, the detachable stepped pierced column carved with conforming dragons and puzzle balls to a circular cup-shaped support, *the rim with minor chips, 35cm high (3)*

R15 000–20 000

*This lot is not suitable for export.



182

182
A group of five Chinese ivory figures of maidens, 20th century

four carved standing holding sprays and branches of flowers, the fifth playing a *liuqin*, *the base of one figure signed, one lacking base, the tallest 25,3cm high (5)*

R15 000–20 000

*This lot is not suitable for export.

183

**Two Japanese ivory netsuke,
late Meiji period (1868-1912)**

each carved as a bespectacled seated
cross-legged figure clipping his toenails,
signed, the taller 4,5cm high (2)

R6 000–8 000

*This lot is not suitable for export.



183

184

**Three Japanese ivory netsuke,
late Meiji period (1868-1912)**

the first carved with two figures
pounding mochi, *signed, 5,4cm high*; the
second carved with a seated smoker,
a bouquet of flowers at his feet and
his straw hat resting against his back,
signed, 3,9cm high; the third carved with
a seated figure, a small beetle on the
ground before him, *damaged, signed,
4,8cm high (3)*

R5 000–7 000

*This lot is not suitable for export.



184

185

**Two Japanese ivory netsuke,
late Meiji period (1868-1912)**

the first carved with a figure holding a
drum in his left hand, *signed, 5,2cm high*;
the second figure of a *sarumawashi*, the
monkey entertainer with his monkey
on his back, *signed, 5,2cm high (2)*

R5 000–7 000

*This lot is not suitable for export.



185



186

186
A Japanese ivory netsuke,
late Meiji period (1868-1912)

carved with a seated figure of Shōjō holding a large sake bottle in his left hand, a straw hat dangling from a ribbon tied around his neck, *signed*, 3,5cm high

R4 000–6 000

*This lot is not suitable for export.



187

187
Two Japanese ivory netsuke,
late Meiji period (1868-1912)

the first carved with a young scholar kneeling at his writing table, holding a paint brush in his right hand, *signed*, 3,9cm high; the second carved with a pair of puppies, *damaged*, 2,4cm high (2)

R5 000–7 000

*This lot is not suitable for export.



188

188
Two Japanese ivory netsuke,
late Meiji period (1868-1912)

the first carved with a vendor carrying masks, games, gourds and dice over his right shoulder, *signed*, 5,6cm high; the second carved with a figure pressing down on the head of an Oni, *damaged*, 4,2cm high (2)

R5 000–7 000

*This lot is not suitable for export.



189

Two Japanese ivory netsuke, late Meiji period (1868-1912)

the first carved with a seated figure, a *tanuki* on his shoulder, *signed*, 4cm high; the second carved with a figure seated on a rocky outcrop and holding a fan in his right hand, to his left an *Oni* crouching with his hands bound behind his back, to his right a kneeling dog holding a banner, *damaged*, 4cm high (2)

R5 000–7 000

*This lot is not suitable for export.



189



190

A Japanese ivory netsuke of a figural group, late Meiji period (1868-1912)

carved with figures at various pursuits, carrying gourds, scrolls, fans, jardinières and water jugs, a crouching tiger between three figures and a sinuous dragon above, the base carved in low relief with stylized clouds and a scroll, *signed*, 4,3cm high

R3 000–4 000

*This lot is not suitable for export.



190

191

A Japanese ivory okimono of Ebisu, Meiji period (1868-1912)

the crouching figure resting his hands on a fish, *signed*, 7cm high; and an associated carved circular stand, 2,8cm high (2)

R7 000–9 000

*This lot is not suitable for export.



191

192

A Japanese ivory okimono of a fish pedlar, Meiji period (1868-1912)

the kneeling figure holding a knife in his right hand and securing a fish to his chopping board with his left hand, a basket of fish to his left and a small crouching boy to his right pointing towards a crab, *thumb missing and knife repaired, signed in a red-lacquer reserve, 9,5cm high*

R7 000–9 000

*This lot is not suitable for export.



192

193

A Japanese ivory okimono, Meiji period (1868-1912)

carved as a fisherman wearing a straw hat standing before waves and casting his nets, *signed and heightened with red, 20,5cm high*

R7 000–9 000

*This lot is not suitable for export.



194

194

A Japanese ivory okimono of a fisherman, Meiji period (1868-1912)

the laughing figure standing on a rock, prising a fish from the beak of his cormorant perched on an overturned basket of fish, raised on an oval base, *signed in a rectangular reserve, 18cm high*

R7 000–9 000

*This lot is not suitable for export.



193

195

Two Japanese ivory okimono, late Meiji period (1868-1912)

the first carved as a seated mask-maker surrounded by his tools and holding a mask in his left hand, *signed, damaged, repairs, 6,6cm high*; the second carved as a seated figure holding parchment, a brush in his mouth, *damaged, repairs, 6,6cm high (2)*

R5 000–7 000

*This lot is not suitable for export.



195



196

Two Japanese ivory okimono, late Meiji period (1868-1912)

the first carved as an Immortal seated on a rocky outcrop, a fan in his right hand and a scroll in his left, *signed, damaged, 7,7cm high*; the second carved as a warrior monk astride the bell of *Dojoji*, carved in relief, *damaged, 7,4cm high (2)*

R3 000–4 000

*This lot is not suitable for export.



196

197

Two Japanese ivory okimono, late Meiji period (1868-1912)

the first carved with a standing monk holding a *Nyo* in his right hand and *Vajra* in his left hand, *signed, damaged, 10,3cm high*; the second carved with *Fukurokuju*, holding a staff in his right hand, the reverse with a young boy supported by a ladder, shaving the Immortal's exaggerated head, their engraved robes carved with mother-of-pearl inlay, *signed, damaged, 11cm high (2)*

R6 000–8 000

*This lot is not suitable for export.



197

198

A large Japanese ivory okimono, Gyokushi, Meiji period (1868-1912)

carved with the figure of a basket seller, with a staff over his left shoulder supporting baskets, drums and parasols, his left hand holding a mask, helmet, a further drum and basket, his right hand holding a gourd and further wares, standing on a rocky base, *repairs and restorations, signed and highlighted in red, 30,5cm high*

R15 000–20 000

*This lot is not suitable for export.

198

199

A Japanese ivory okimono, possibly Shusai, Meiji period (1868-1912)

carved with the figure of a bird-catcher, his arms supporting two birds in combat, a small boy below him holding a rope, standing on a rocky base, *left-hand of bird-catcher repaired, age cracks, base signed, 31cm high*

R6 000–8 000

*This lot is not suitable for export.

200

A Japanese ivory okimono, Meiji period (1868-1912)

carved with a warrior astride a tiger in combat with an *Oni*, *lacking sword handle, a section of the tiger's left paw missing, signed, 20,5cm high*

R6 000–8 000

*This lot is not suitable for export.

201

A Japanese carved ivory and Shibayama page turner, Meiji period (1868-1912)

the flat blade decorated in gold lacquer with a dragon, *ho-o* birds and stylized clouds, the handle carved with a bearded figure, his back adorned with a sword, *some loss to his left foot, gilt slightly rubbed, 54,5cm high*

R8 000–10 000

*This lot is not suitable for export.

202

A Japanese carved ivory tusk, Meiji period (1868-1912)

the front carved with the figure of *Hotei* and other deities, attended by a small boy, the reverse with a scrolling dragon, *approximately 43cm long*

R12 000–15 000

*This lot is not suitable for export.



203

A Japanese carved ivory covered box, Meiji period (1868-1912)

cylindrical, carved with a continuous frieze of chrysanthemums and peonies and highlighted with fan-shaped panels of *Hotei* and a maiden playing a *liuqin*, the cover similarly carved and with a flowerhead finial, signed in an oval reserve, 9cm high

R4 000–6 000

*This lot is not suitable for export.

203



204

A Japanese carved ivory brush pot, Meiji period (1868-1912)

cylindrical, carved with a frieze of tigers, an elephant, a buffalo, a goat and a rabbit, 7,8cm high

R4 000–6 000

*This lot is not suitable for export.

204



205

A shagreen and Japanese ivory-mounted cigarette box, 1930s

rectangular, the cover applied and carved in relief with an ivory figure of a Japanese musician playing his *O-tsuzumi*, the hinged cover enclosing a metal compartment, stamped with patent number '256860', the cover signed in a square reserve, 7,3cm high, 18cm wide, 13,5cm deep

R6 000–8 000

*This lot is not suitable for export.

205



206

An Art Deco carved ivory figure of a little girl, 1930s

in the style of Ferdinand Preiss, holding a butterfly, standing on a circular base and raised on a square onyx plinth, 10cm high

R4 000–6 000

*This lot is not suitable for export.

206



207-210 NO LOTS