





The Vineyard Hotel, Newlands, Cape Town  
6 March – 2pm

**English Silver, Furniture,  
Oriental and Cape Silver,  
Decorative Arts and Furniture**

Lots 171–360

Lot 232 An amber-pottery glazed figure of a horse, Tang Dynasty (detail)

171

**A George I silver pap boat,  
Peter Archambo I, London, 1721**

60g, 11,5cm long

R8 000–10 000



171

172

**A George II silver cake basket,  
John Hugh le Sage, London, 1755**

oval, the everted pierced rim moulded with masks, flowerheads, acanthus leaves and c-scrollwork, the sides pierced with stylised trees and quatrefoil decoration, the s-shaped swing bail handle with dolphin heads, on four volute feet headed by cherub masks, *armorial removed*, 2285g, 33cm wide over handle

R12 000–15 000

See Arthur G. Grimwade: London Goldsmiths 1697–1837, pp.124–125, illus. 168o.



172

173

**A George III silver coffee pot,  
Francis Butty & Nicholas Dumee,  
London, 1765**

the baluster body embossed with flowerheads, foliage, c-scrolls and a cartouche engraved with an armorial, swan neck spout, the domed cover with *later* wooden pineapple finial and scroll handle, raised on a conforming spreading foot, *scratch weights* 36"14, inscribed 'The gift of JE' 1135g all in, 28,5cm high

R35 000–40 000



173

174

**A George III silver coffee pot,  
maker's initials BM, London, 1765**

of baluster form, embossed with flowers, foliage and sheaves of wheat, the cover with gadrooned rim similarly embossed, bud-and-bead finial, *later* composite handle, raised on a domed stepped conforming base, *dents*, 1050g all in, 27cm high

R25 000–30 000



174





175



176



177

175

**A set of four George III silver sauce tureens and covers, Robert Sharp, London, 1793**

each of navette form, with reeded rims and handles, raised on a domed conforming foot, 2645g all in, 15,5cm high (4)

**R60 000–70 000**

176

**A George III silver sugar basket, Charles Fox I, London, 1793**

of navette form, with reeded rim and swing-handle, the body pierced with a shell border enclosing oval cartouches, one engraved with initials, raised on a conforming reeded foot, 220g, 16,5cm wide

**R5 000–7 000**

177

**A George III silver sauce tureen and cover, Peter & Ann Bateman, London, 1797**

the part-lobed boat-shaped body engraved with a band of foliage, on four acanthus-leaf-headed legs, on a stepped rectangular plinth engraved with an armorial, on four claw-and-ball feet, the sides applied with acanthus-leaf scroll handles, the cover engraved with a crest and applied with a foliate finial, engraved with the arms of Charles Osmond Osmond Ma Cantab of Hern in Halberton and Pinnexmoor, 670g, 18cm high

**R15 000–20 000**

178

**A George III silver two-handled sugar bowl and milk jug, maker's mark indistinct, London, 1801**

each part-engraved body headed by a crest, the rim with rope and wrigglework borders, with applied reeded handles, gilt interior, 475g all in, the sugar bowl 18,8cm wide over handles (2)

R6 000–8 000



178

179

**A George III silver-mounted glass biscuit barrel, Richard Cook, London, 1805**

oval, the arched open framework set to a stand with gadrooned border and leaf-scroll handles, raised on four bracket and bun feet, the detachable glass liner cut with bands of printies and star-cut base, the conforming gadrooned cover with lion-paw finial highlighted with a crescent moon and a rosette, 720g weighable silver, 17,2cm high

R7 000–9 000



179

180

**A George III silver hot water jug, S C Younge & Co, Sheffield, 1818**

of baluster form, moulded in relief with diagonal panels of alternating fruit and beaded bosses, raised on a domed circular foot with a bead-and-reel border, the hinged cover with a bud finial enclosed by gadrooned, bead-and-reel borders, the side applied with a cane- wrapped scroll handle, 855g all in, 30cm high

R12 000–15 000



180

181

**A George IV silver toast rack, marker's initials WE, possibly William Edwards, London, 1820**

the double-arched open frame headed by a leaf and reeded handle, the frame with gadrooned border, the corners with shell and acanthus leaves, raised on four shell, scroll and paw feet, 430g, 15,5cm high

R4 000–6 000



181

182



182

**A George IV silver nutmeg grater, Charles Rawlings, London, 1822**

rectangular, the hinged cover engraved with a crest, conforming thumbpiece enclosing a fixed inner grate, the reverse with a hinged cover, 60g, 7,3cm wide

R4 000–6 000

183

**A William IV silver-mounted aide-mémoire, Joseph Willmore, Birmingham, 1836**

the front embossed with a view of a castle in a wooded landscape enclosed by a c-scroll and foliate border, the reverse with a church in a wooded landscape enclosed by a conforming border, applied rings with chain, the interior fitted with a blue leather purse and an ivory notebook inscribed 'Monday to Saturday', with associated pencil, 8,2cm wide (2)

R8 000–10 000

183



184

**A pair of Victorian silver candlesticks, Thomas Bradbury & Son, Sheffield, 1839**

each ribbed baluster column engraved with three acanthus leaves, with conforming socket and detachable drip-pan, engraved with a crest, raised on a shaped base moulded with shells and c-scrolls, loaded, 27cm high (2)

R20 000–25 000

185

**A Victorian silver wine coaster, Charles Thomas Fox & George Fox, London, 1848**

circular, the pierced frame with an oval vacant cartouche flanked by pierced foliate and diamond-shaped bands, the rim and the base with beaded borders, raised on three pierced claw and ball feet, the centre applied with a circular boss, sodium spotting, 255 all in, 8,2cm high

R6 000–8 000

185



184



186

**186**  
**A Victorian silver and glass**  
**three-light epergne, Stephen**  
**Smith & William Nicholson,**  
**London, 1852**

cast with a tree issuing three sconces  
 headed by candle sockets, the central  
 branches supporting a cut-glass bowl,  
 with a pair of seated putti below  
 resting on a rocky mound, the front  
 with a vacant cartouche, the reverse  
 with a cartouche engraved with a  
 crest, *restorations*, 4545g, 61cm high

**R70 000–90 000**



187

**187**  
**A Victorian gilt-metal-**  
**mounted micromosaic snuff**  
**box, Carlo Giuliano (1831-1895),**  
**London, 1862**

rectangular, the cover inlaid with a  
 micromosaic panel of a view of the  
 Temple of Vesta, Tivoli, Rome, the  
 hinged cover with rope-twist border,  
 the body with circle and bead border,  
 gilt interior, raised on compressed  
 bun feet, 3,4cm high, 8cm wide

**R20 000–25 000**



188

**A Victorian silver chalice,  
George Richards Elkington,  
London, 1866**

the body engraved with flowers and foliage against a stippled ground, enclosing a cartouche engraved with a crest and initials, beaded ring stem, raised on a conforming circular foot with beaded border, gilt interior, 270g, 17,3cm high; and another example, Robert Hennell II, London, 1857, moulded in relief with foliage enclosing a vacant cartouche, raised on three leaf-scroll feet set to a domed circular base, 220g, 14cm high (2)

R7 000–8 000



188

189

**A Victorian silver-gilt mirror,  
possibly Abraham Brownett,  
London, 1866**

rectangular easel-back, engraved with vases of flowers, foliate scrolls and strapwork, the crestings applied with vacant coral-mounted medallions, later mirror plate, 38cm high

R8 000–10 000



189

190

**A Victorian silver claret jug,  
Barnard & Sons Ltd, London,  
1870**

of baluster form, engraved with flowerheads and foliage, raised on a domed circular foot, hinged cover with gilt interior, stamped 966A, 580g, 33cm high

R9 000–12 000



190



191

191

**A pair of Victorian silver-  
plated wine coasters**

each with everted rim moulded with c-scroll and acanthus-leaf border, turned wooden base, 17cm diameter (2)

R4 000–6 000



192

**A Victorian four-piece silver  
'Greek-Revival' tea set, Martin  
Hall & Co, London, 1875**

comprising: a teapot, a coffee pot, a two-handled sugar bowl and a milk jug, urn-shaped, engraved with stylised scenes from Greek mythology, the rims with ovolo borders, raised on a stepped circular base, the hinged cover surmounted by a finial in the form of a Spartan helmet enclosed by a band of foliage, the sides applied with bifurcated and scroll handles, gilt interiors, 2295g all in, the coffee pot 28cm high (4)

**R40 000–50 000**

\*This lot is not suitable for export.



192

193

**A Victorian silver snuff  
box, George Unite & Sons,  
Birmingham, 1875**

rectangular, the hinged cover with engine-turned panel enclosed by a foliate border, foliate thumbpiece, gilt interior and conforming base, 125g, 7,4cm wide; and a Victorian silver vinaigrette, Nathaniel Mills, Birmingham, 1841, the hinged rectangular cover engraved with a vacant cartouche enclosed by scrolls, scroll thumbpiece enclosing a hinged pierced grille, gilt interior, the base similarly engraved, 15g, 3,2cm wide (2)

**R2 500–3 000**



193

194

**A Victorian silver inkstand,  
George Fox, London, 1885**

the pierced rectangular frame fitted with a pair of detachable glass silver-mounted ink bottles flanking open compartments, the wavy pierced stand with gadrooned border, pierced foliate sides and a pair of vacant cartouches, raised on bead, leaf and scroll feet, the frame 600g, 22,5cm wide

**R12 000–15 000**



194

195

**A Victorian five-piece silver tea and coffee service, Charles Stuart Harris, London, 1898**

comprising: a teapot, coffee pot, hot water jug, two-handled sugar bowl and milk jug, each with baluster body embossed in relief with leaf scrolls and flowers enclosing c-scroll engraved and vacant cartouches, the teapot and coffee pot with hinged cover surmounted by a bird with foliage, c-scroll reeded handle with acanthus-leaf thumbpiece, the spouts moulded with bearded masks and swan necks, on acanthus-headed scroll feet, *some restorations*, 3820g all in, the coffee pot 26,5cm (5)

R30 000–40 000

\*This lot is not suitable for export.



195

196

**A pair of silver-plated wine coasters, 19th century**

each with foliate and c-scroll everted rim, turned wooden base centred by a boss engraved with a crest, 16,5cm diameter (2)

R4 000–6 000



196

197

**A Victorian silver kettle-on-stand, Jenkins & Timm, Sheffield, 1900**

with fixed handle moulded with vacant cartouches, the body moulded in relief with a pair of vacant cartouches enclosed by flowers and foliage, mask and swan-neck spout, the hinged cover with bird finial, raised on a circular foot, the pierced stand fitted with spirit well and raised on three leaf-headed paw feet, 1425g all in, 40cm high

R15 000–20 000

\*This lot is not suitable for export.



197

198

**An Edward VII silver and enamelled glass-mounted dressing table decanter set, Henry Matthews, Birmingham, 1900-1901**

the pierced silver holder embossed with c-scrolls and foliage on a moulded circular open base, fitted with three divisions, each triangular bottle with hinged silver cover and stopper, enamelled with bands of green, yellow and red, engraved to the centre with initials 'C', 'L' and 'P', the front of each glass body part-cut with printies, *dents to the foot rim of the stand*, the stand 75g, each bottle 11,2cm high (4)

R10 000–12 000



199

**An Edward VII silver Kings pattern canteen of cutlery, Josiah Williams & Co, London, 1901-1902**

comprising: a soup ladle, twelve table spoons, twenty-four table forks, twenty-four dessert forks, twenty-four dessert spoons, a pair of sauce ladles, a basting spoon, six egg spoons, twelve teaspoons, four salt spoons, a pair of sugar tongs, and a butter knife, 8305g *all in*; fitted in an oak brass-bound canteen with a tray, the sides with brass carrying handles, the hinged cover inlaid with a brass plaque inscribed 'M Walker', 13,5cm high, 57,5cm wide, 37cm deep; and an associated set of twenty-four Queen Elizabeth II silver Kings pattern table knives, John Biggin, Sheffield, 1990-1992; and a set of twenty-four silver bread knives, 1991-1992 (160)

R100 000–110 000



199

200

**An Edward VII silver watch stand, Samuel M Levi, Birmingham, 1906**

of architectural form, the front with a void enclosed by embossed acanthus leaves, velvet-lined back with hinged cover, Rd. 396813, loaded, 10,2cm high

R3 000–4 000



200

201

**A pair of Edward VII silver candlesticks, Walker & Hall, Sheffield, 1907**

each with waisted fluted column, foliate socket and detachable drip-pan, raised on a square-shaped base moulded with acanthus leaves, shells and c-scrolls, repairs, loaded, 30,5cm high (2)

R12 000–15 000

202

**A George V silver two-handled tray, Henry Matthews, Birmingham, 1912**

rectangular with gadrooned, acanthus-leaf and shell border, the sides applied with rope-twist and acanthus-leaf handles, the centre formerly with engraving, 2770g, 71cm wide over handles

R10 000–15 000

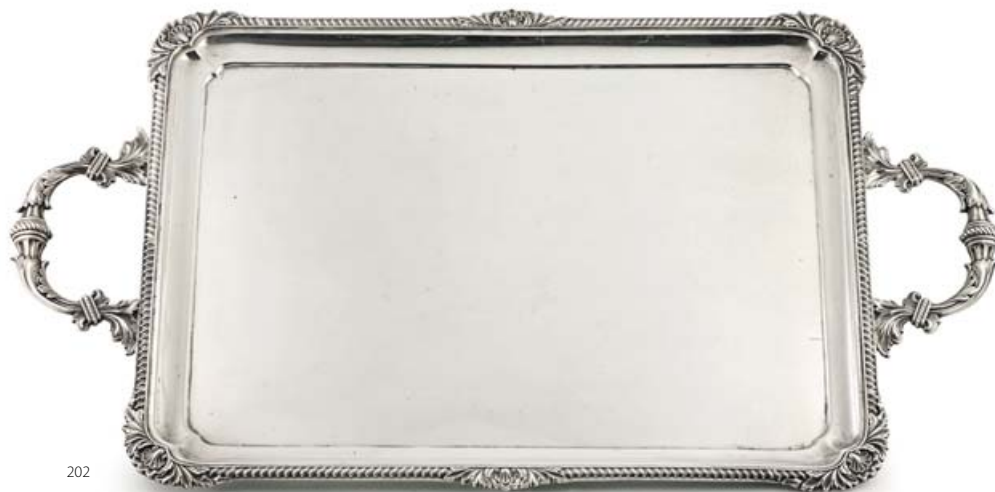
203

**A George V silver and ivory novelty tea strainer and stand, Asprey & Co Ltd, London, 1912**

of teapot form with applied ivory handle, the shoulders applied with handles terminating in scrolls with detachable pierced strainer, 75g all in, 7cm high (2)

R4 000–6 000

\*This lot is not suitable for export.



202

204

**A pair of George V silver baskets, Sharman D Neill, Sheffield, 1912**

circular with everted pierced foliate sides, the rim with scroll and shell border, minor dents, 750g all in, 25,4cm diameter (2)

R6 000–8 000



201



203



204





205

205

**An Irish silver three-piece christening set, Sharman D Neill, Dublin, 1916**

comprising: a bowl, a cup and a spoon, each hammered body engraved with the initials 'WVMcl', stamped 'SHARMAN. D. NEILL LTD BELFAST', 420g all in, the bowl 12cm diameter (3)

R4 000–6 000



207

206

**A George V silver menorah, Sigmund Zyto, London, 1924**

with eight candle-arms, the front with detachable *Shamash* candle-arm, the central column headed by a Star of David finial, to a stepped reeded circular base, loaded, 32,5cm high

R8 000–12 000

207

**A George V silver eight-day travelling clock, Adie Brothers Ltd, Birmingham, 1927**

the engine-turned hinged covers enclosing a square dial set with luminous Arabic numerals, pierced hands, Swiss eight-day movement, set to a hinged engine-turned frame, engraved with the inscription 'C.V. - F.V. 1903-1928', 7cm wide

R4 000–6 000



206



208

208

**A set of four George V silver candlesticks, William Hutton & Sons Ltd, Sheffield, 1929**

in sizes, each with baluster column raised on an urn-shaped support, on a shaped square base, moulded acanthus-leaf corners, spool-shaped sockets and detachable drip-pans, each engraved with a crest, *dents, loaded, the tallest 30,4cm high (4)*

R25 000–30 000

209

**A red glass and silver-plate mounted novelty honey pot in the form of a bee, Israel Freeman & Son Ltd, London, 1930s**

with red glass body and engraved wing-shaped hinged cover, *stamped with the model number 141, Made Italy, 14cm long*; with spoon, apparently unmarked (2)

R6 000–8 000

210

**A George VI five-piece silver tea and coffee set, Mappin & Webb, Sheffield, 1938**

comprising: a teapot, a coffee pot, a hot water jug, a two-handled covered sugar bowl and a covered milk jug, each with octagonal urn-shaped body, moulded in relief with beaded, lappet and foliate borders, the hinged domed covers with stylised pineapple finial, the sides applied with composition handles on bifurcated leaf-scroll supports, the milk jug and covered sugar bowl with reeded beaded silver handles, raised on a stepped beaded spreading circular foot, *3520g all in, the hot water jug 26,5cm (5)*

R50 000–60 000



209



210

211

**A set of Queen Elizabeth II silver Chippendale pattern flatware, Elkington & Co Ltd, Sheffield and Birmingham, 1959-1969**

comprising: twelve soup spoons, twelve fish forks, twelve fish knives, four table spoons, twelve table forks, twelve table knives, twelve butter knives, twelve dessert spoons, twelve dessert forks, seventeen teaspoons, twelve coffee spoons, a steel, a carving fork and a carving knife, *5060g all in*; and a pair of silver-plated Pompadour pattern fish servers, Elkington & Co Ltd, Sheffield, 1948 (134)

R40 000–50 000

211



212

**A Queen Elizabeth II silver Old English Bead pattern canteen of cutlery, maker's initials ES, Sheffield, 1996**

comprising: eleven soup spoons, twelve fish forks, twelve fish knives, four table spoons, twelve table forks, twelve dessert spoons, twelve dessert forks, twelve cake forks, twelve teaspoons, *5740g all in*; twelve table knives, twelve bread knives, one silver-plated soup spoon, fitted in a mahogany velvet-lined canteen with a tray, raised on block feet, *19cm high, 51,5cm wide, 36cm deep* (124)

R40 000–60 000

212





213

213

**A George II walnut and inlaid fall-front bureau**

the rectangular top above a cross-banded fall-front enclosing a fitted interior with an arrangement of cubby holes, secret compartments and drawers, the lower half with four graduated drawers, on bracket feet, 104cm high, 92cm wide, 58cm deep

**R25 000–30 000**



214

214

**A George II walnut secrétaire**

the rectangular outset top with ogee frieze drawer below, the fall-front inset with leather writing surface enclosing an interior fitted with a central cupboard door flanked by open cubby holes and ten drawers, the lower half with a pair of short drawers and two long graduated drawers, on bun feet, with depository paper label 'J.G Webber & Sons, Depository, Maidenhead, No 1894', restorations and repairs, 168,5cm high, 108,5cm wide, 52,5cm deep

**R20 000–30 000**



215

**A George III mahogany  
bureau-cabinet**

the breakfront carved pediment  
above a pair of mirrored cupboard  
doors enclosing two adjustable  
shelves, the sides with brass carrying  
handles and closing latch, the  
fall-front with baize writing surface,  
cubby holes and nine drawers, above  
a pair of short drawers and three long  
graduated drawers, on bracket feet,  
*231,5cm high, 108cm wide, 62,5cm deep*

**R30 000–40 000**





216

**216**  
**A George III mahogany and**  
**inlaid chest-on-chest, late**  
**18th/early 19th century**

the outset top above a pair of drawers with three long graduated drawers below, canted and fluted sides, the lower half with three long drawers, on bracket feet, *restorations, 173cm high, 110cm wide, 57,5cm deep*

**R30 000–40 000**



217

**217**  
**A George III mahogany**  
**gentleman's travelling**  
**commode**

with hinged rectangular top, the interior fitted with detachable stationery and bottle compartments and a mirror with ratchet support, above a hinged writing slide and wash drawer fitted with a blue and white porcelain basin, soap dish

and brass plug, a deep drawer with compartment to the right, with three further drawers below, one fitted with a painted liner, the sides with brass carrying handles and a towel bracket, on square-section legs with brass cappings and castors, *93cm high, 70cm wide, 49,5cm deep*

**R15 000–20 000**

218

**A set of eight George III mahogany and inlaid dining chairs**

including a pair of carvers, each with rectangular top rail above a foliate-carved mid rail, reeded supports, stuff-over upholstered seat, on tapering square-section legs joined by H-shaped stretchers (8)

R20 000–30 000

**PROVENANCE**

David Porter Antiques



218

219

**George III style mahogany twin-pedestal dining table**

the rectangular top with reeded edge and rounded corners, raised on ring-turned baluster columns and three reeded outswept legs with brass claw cappings and castors, 74,5cm high, 182cm long, 196cm wide, with one leaf

R15 000–20 000



219



220

220

**A George III mahogany sideboard, late 18th century**

the rectangular top with reeded shaped front above a pair of frieze drawers flanked by a pair of *faux* drawers, one enclosing a cellaret, the other with a cupboard, on square-section legs and spade-shaped feet, 91cm high, 177cm long, 74cm deep

R15 000–20 000



221

221

**A George III mahogany desk**

the rectangular reeded top inlaid with a gilt-tooled leather writing-surface above an arrangement of seven drawers, on ring-turned legs with brass cappings and castors, 75cm high, 127cm wide, 53,5cm deep

R15 000–20 000



222

**A George III style mahogany sofa table**

the rectangular cross-banded top above a pair of frieze drawers, the reverse with dummy drawers, on outcurved legs with brass cappings and castors, *later stretcher*, 71,5cm high, 143cm wide open, 61cm deep

R10 000–12 000

222



223

**A Regency rosewood library table**

the rectangular tilt-top with gadrooned borders above a pair of frieze drawers, the tapering column on an incurved base, raised on scroll feet with metal castors, 73,5cm high, 132,5cm wide, 79cm deep

R12 000–15 000

223



224

**A pair of Regency bronze and parcel-gilt candlesticks**

each stepped marble plinth mounted with a gryphon, with tail of scroll and foliate form, the head surmounted by a candle socket, 21,5cm high (2)

R8 000–10 000



224



225

225

**A Regency rosewood and carved giltwood console table**

the later rectangular mottled black marble top above a pair of acanthus-leaf-carved supports raised on paw feet, mirrored backboard and conforming plinth base, 93cm high, 98,5cm wide, 33cm deep

R25 000–30 000



226

226

**A Regency rosewood and brass-inlaid centre table**

the circular tilt-top above a gadrooned frieze raised on a tapering hexagonal column and socle, on a triform conforming base, raised on three brass paw feet with castors, 72cm high, 108cm diameter

R40 000–45 000

227

**A set of four Regency mahogany side chairs**

each with carved top rail above a pierced mid rail carved with a central rondel, drop-in seat, sabre front legs; and a near pair of Regency mahogany armchairs, 19th century, each with foliate-carved top rail above a foliate-carved mid rail, downcurved arms, caned seat, loose cushion, on lappet-leaf-carved sabre legs (6)

R7 000–9 000



227

228

**A Regency mahogany sofa table**

the rectangular twin-flap top above a pair of frieze drawers, on a pair of turned columns, the platform base on four hipped legs with brass paw feet, cappings and porcelain castors, inlaid with ebonised stringing, 71,5cm high, 145cm wide open, 69cm deep

R12 000–15 000



228

229

**A William IV mahogany sofa table**

the rectangular hinged satinwood cross-banded top with rounded corners above a pair of drawers, on shaped supports with leaf-carved fluted outswept legs, foliate cappings and brass castors, 71,5cm high, 147cm wide open, 63,4cm deep

R12 000–15 000

230

**A Victorian walnut and inlaid table**

the moulded quarter-veneered oval top inlaid with stringing and arabesque motifs, raised on a tapering column carved with shaped panels highlighted with flowerheads and foliage, raised on four similarly moulded legs, on porcelain castors, stamped 'F.A.' and the numerals '7023', restorations, 70,5cm high, 146,5cm long, 113,5cm wide

R12 000–15 000

231

**An Edwardian mahogany Arts and Crafts armchair**

with high open backrest and arm supports, the struts inlaid with foliate rondels, upholstered serpentine seat on square-section legs and block feet

R2 000–2 500

229



230

231







232

**An amber-glazed pottery figure  
of a horse, Tang Dynasty**

standing four-square on a rectangular  
base, its head turned slightly to one  
side, the unglazed saddle with amber-  
glazed splashes, the saddle-cloth, mane  
and forelock with pale-green glaze,  
with aperture for the tail, *firing cracks  
and glaze fritting chips*, 49cm high

*Accompanied by a Thermoluminescence  
Certificate from the University of Hong  
Kong, Laboratory number 114.92,  
14 August 1992.*

**R120 000–150 000**

233

**A pair of Swatow blue and white bowls, Ming Dynasty, late 16th/early 17th century**

each centre painted with a rondel of scholars' objects enclosed by foliate medallions, the everted rim with sprays of peonies, the reverse loosely painted with alternating panels of ribbons and *lingzhi*, firing cracks, minor fritting chips to the rims, 22cm diameter (2)

R12 000–15 000



233

234

**A blue and white Swatow bowl, Ming Dynasty late 16th/early 17th century**

the centre painted with a rondel of scholar's objects enclosed by foliate medallions, the everted rim with sprays of peonies, the reverse with a small bird perched on a branch above alternating panels of fruit and *lingzhi*, firing crack to the reverse of the bowl, 22cm diameter

R9 000–12 000



234

235

**A 'Kraak-porselein' blue and white dish, Ming Dynasty, Wanli period, 17th century**

the centre painted with three geese before a riverscape viewing three birds in flight, the cavetto with scalloped cell and diaper border, enclosed by alternating panels of flowers and Buddhist emblems, the reverse with panels loosely painted with stylised scrolls, rim repaired, fitting chips to the rim, 50,5cm diameter

R20 000–25 000

**PROVENANCE**

Mrs Kotie Roodt-Coetzee, Director, National Cultural History Museum (1965-1978)



235

236

**A Chinese blue and white vase,  
Qing Dynasty, Kangxi, late 17th/  
early 18th century**

of baluster form, painted with cranes and deer in a pine forest before a mountainous landscape, the neck painted with a stiff-leaf border, *hairline cracks, chips to the rim, underglaze-blue double-ring mark, 33cm high;* wooden cover and stand

R8 000–10 000



236

237

**A Chinese blue and white bowl,  
Qing Dynasty, Kangxi, late 17th/  
early 18th century**

the centre painted with a sage and his attendant before a pavilion, with a pair of rabbits in the foreground, a crane in flight above, enclosed by eight alternating panels of maidens at various pursuits and peonies issuing from a rocky outcrop divided by diaper borders, the reverse painted with scroll and foliate sprays divided by a double-line border, *underglaze-blue six-character mark, firing crack to the reverse, chips and fritting chips to the rim, 34,5cm diameter*

R12 000–15 000

**PROVENANCE**

Mrs Kotie Roodt-Coetzee, Director, National Cultural History Museum (1965-1978)



237

238

**A Chinese mirror-black-glazed  
saucer dish, Qing Dynasty, Kangxi,  
early 18th century**

decorated in iron-red with butterflies and flowers within a swastika and cross border, the reverse similarly glazed, *15cm diameter;* and a Chinese blue and white saucer dish, Qing Dynasty, 19th century, painted with an inscription above a pair of birds perched amongst peonies and blossoms before a rocky mountainscape, *six-character underglaze-blue mark, 15,5cm diameter (2)*

R3 000–4 000



238







239



239

**A Chinese blue and white jar,  
Qing Dynasty, 18th century**

ovoid, painted with a spray of flowers  
before a rocky outcrop above a blue  
double-line border, 10,5cm high; and  
another, painted and moulded in  
relief with scholars' objects, 11cm high  
(2)

R4 000–6 000



240

240

**A pair of Chinese Export blue  
and white sauce boats, Qing  
Dynasty, Qianlong (1736-1795)**

modelled after a European silver  
shape, each painted with panels of  
peonies and foliage between line,  
scroll and spearhead borders, the  
interior painted with 'The Three  
Friends' before a rocky outcrop and  
balustrade, *fritting chips*, one with a  
chip to the rim, hairline crack and firing  
fault to one handle, 9,4cm high (2)

R6 000–8 000



241

**A Chinese blue and white  
platter, Qing Dynasty,  
18th century**

rectangular, the centre painted with  
two figures in a garden before a  
pavilion, with further buildings and  
a riverscape, the cavetto with cell-  
diaper and foliate border, the rim with  
ribbon and diaper border, *fritting chips  
to the rim, 45cm wide*

R7 000–9 000



241

242

**A Chinese blue and white  
platter, Qing Dynasty, late  
18th/early 19th century**

rectangular, the centre painted with  
scholars' objects, a willow tree and  
peony blossoms before a balustrade,  
the cavetto with cell-diaper border,  
the rim with conforming border  
divided by stylised foliage, *34cm wide*

R3 000–5 000



242

243

**A Chinese blue and white  
platter, Qing Dynasty,  
Qianlong (1736-1795)**

rectangular, with canted sides  
painted with a pair of birds before  
a balustraded fence enclosing 'The  
Three Friends', the cavetto with scroll  
and spearhead border, the rim with  
butterflies, flowers and cell-diaper  
panels, *chips to the rim, 30cm wide*; and  
another example, similar, the centre  
painted with sprays of flowers, *chips to  
the rim, 28,5cm wide (2)*

R4 000–6 000



243



244

**244**  
**A Chinese blue and white**  
**metal-mounted opium jar,**  
**Qing Dynasty, late 18th/early**  
**19th century**

ovoid, painted with a fisherman before buildings and a mountainous landscape, mounted with a swing handle, open funnel, detachable cover secured by a stopper, the sides with strapwork, 10cm high

R4 000–6 000



245

**245**  
**A Chinese flambé-glazed**  
**bottle vase, Qing Dynasty,**  
**late 18th/early 19th century**

covered in a sang-de-boeuf glaze suffused with purple and blue streaks against a crackle-glazed cream ground, foot rim restored, 31cm high

R10 000–12 000



246

**246**  
**A pair of Chinese sancai-**  
**glazed horses, Qing Dynasty,**  
**19th century**

standing four-square, with apple-green-glazed saddles, 19cm high (2)

R3 000–4 000

247

**A Chinese blue and white  
'prunus' bowl, Qing Dynasty,  
19th century**

the centre and exterior painted with  
flowering sprays of prunus reserved  
on a blue 'cracked ice' ground, *fritting  
chips to the rim, four-character mark,  
25cm diameter*

R5 000–6 000



247

248

**A pair of Chinese famille-  
rose bowls, Qing Dynasty,  
Guangxu (1875-1908)**

the exterior brightly enamelled with  
a pair of birds on a branch and a  
rocky outcrop issuing various sprays  
of blossoms, *iron-red Guangxu six-  
character mark, 11,5cm diameter (2)*

R8 000–10 000



248

249

**A Chinese blue and white jar,  
Qing Dynasty, 19th century**

ovoid, painted with four double-  
line panels of small boys at various  
pursuits before rocky outcrops,  
prunus, pine, and banana leaves, the  
shoulder with greek-key and *ruyi*-head  
borders, *firing crack to the inner foot  
rim, underglaze-blue spurious Kangxi  
double-ring and six-character mark,  
with an associated cover, painted with  
peonies and a shou character mark,  
24,5cm high*

R6 000–8 000



249



250

**A pair of Chinese blue and white jars and covers, mid 20th century**

ovoid, each decorated with lotus flowerheads amongst scrolling foliage, the domed covers similarly decorated, *chip and firing crack to one cover, 28cm high (2)*

R6 000–8 000



250

251

**A Chinese enamel and metal-mounted teapot, Qing Dynasty, 19th century**

the bulbous body enamelled with lotus blooms and scrolling foliage against a cream-ground, the neck with *ruyi* head border, with branch-form handle and spout heightened and modelled with squirrels with fruit in their mouths, the cover with squirrel finial, *7,5cm high*

R4 000–6 000



251

252

**A Chinese ivory opium container, late 19th century**

of barrel form with girdle, the detachable cover with moulded rim, *6,7cm high*

R5 000–7 000

\*This lot is not suitable for export.



252



253

**A Chinese carved jade censor and cover, 20th century**

carved in high relief with the figure of a phoenix, its mouth with a loose ring handle and its back carved with a vase, carved with a pair of writhing dragons with bifurcated tails contesting a flaming pearl, the domed cover carved with a further dragon, his right paw resting on a cloud, the stone of even pale tone, 17,5cm high

R6 000–8 000



253

254

**A Chinese spinach green jade bowl, first half 20th century**

with slightly everted rim and raised on a low foot rim, the mottled pale green stone with grey inclusions, 4,7cm high

R4 000–6 000



254

255

**A Chinese ivory figure of Shoulao, first half 20th century**

the standing robed figure holding a peach in his left hand and a staff in his right, a child astride a deer at his feet holding a peach in both hands, raised on a low base, with four-character seal, 30,9cm high

R8 000–10 000

\* This item is not suitable for export.



255

256

**A Chinese carved spinach green jade figure of an Immortal, first half 20th century**

the standing robed maiden holding a dish of three plums on a five-leaf branch in her left hand and a spray of lotus blooms in her right hand, attached to a carved wooden stand, the stone of even green tone with black flecks, 18,5cm high excluding the stand

R10 000–12 000



256

257

**A Chinese carved ivory figure of Guanyin, first half of 20th century**

the standing robed figure holding a spray of flowers in her right hand, her left hand behind her back, 20cm high, with carved wooden stand

R12 000–15 000

\*This lot is not suitable for export.



257

258

**A Chinese carved turquoise figure of an Immortal, first half 20th century**

the standing maiden holding a staff in her left hand and a branch of *lingzhi* in her right hand, attached to a carved wooden stand inlaid with 'silvered' wire decoration, lacking finger, 10cm high excluding stand

R5 000–7 000



258

259

**A Chinese export ivory carved puzzle ball and stand, early 20th century**

the concentric pierced ball carved in relief with five dragons amongst clouds enclosing multiple concentric balls, raised on a stand carved with three elephants standing on their back legs with their trunks aloft, the circular base raised on a turned stem united by another puzzle ball, the whole supported on a stepped pierced column carved with conforming dragons to a pierced base carved with further writhing dragons, 55cm high (2)

R15 000–20 000

\* This lot is not suitable for export.



259

260

**A pair of Chinese jade bangles**

each carved with three contesting *chilong*, the stone of mottled-brown tone, approximate inner circumference 64mm (2)

R6 000–8 000



260



261

261

**A Chinese jade snuff bottle,  
late 19th/early 20th century**

of flattened ovoid form, carved in relief with quail amongst millet, the base with leaves, the shoulders carved and pierced mythical beasts, stopper, 8cm high

R5 000–7 000



262

262

**A Chinese jade snuff bottle,  
early 20th century**

of vase form, carved with a small boy releasing the spirit of a bat from a basket, with a further bat to his left, carved and pierced scroll handles, with low foot rim, stopper, 7,5cm high

R7 000–9 000



263

263

**A Chinese jade snuff bottle,  
late 19th/early 20th century**

the front carved with a young boy and his buffalo, the reverse with a *qilin* viewing a bird, with carved and pierced scroll handles, with low foot rim, stopper, 6,8cm high

R7 000–9 000

264

**A pair of Chinese blue and white snuff bottles, Qing Dynasty, late 19th century**

painted with a pair of contesting dragons amongst stylised waves, stoppers, *apocryphal underglaze four-character Kangxi mark*, the taller 10,5cm high (2)

R3 000–4 000

264



265

**Two Chinese blue, white and copper red snuff bottles, 20th century**

painted with hunting scenes of figures on horses, stoppers, *one with underglaze-blue apocryphal Kangxi double-ring mark*, the taller 9,5cm high; a bottle painted with a pair of phoenix amongst scrolling flowers between lappet and foliate borders, stopper, *underglaze- blue apocryphal Kangxi double-ring mark*, 9,5cm high; and a bottle, the front and reverse painted in iron-red with a dog of Fo enclosed by scrolling foliage, stopper, *iron-red six-character mark*, 7,5cm high (4)

R4 000–6 000

265



266

**A Chinese 'Aventurine' blue glass snuff bottle, early 20th century**

flattened ovoid with copper gilt inclusions, stopper, 7cm high

R3 000–4 000

266





267

**A Chinese 'Realgas' glass and jade snuff bottle, late 19th/early 20th century**

flattened ovoid in shades of russet and crimson, stopper, 7,7cm high

R2 000–3 000

268

**A Chinese green glass snuff bottle in the form of an elephant, early 20th century**

of rounded form, moulded with the head turned to the front, with carved saddle-cloth, the neck with stylised leaf lappet border, stopper, 7cm high; and a pink glass example, late 19th/early 20th century, with faceted body, stopper, *incised four-character mark*, 6cm high (2)

R7 000–8 000

269

**Two Chinese cameo agate snuff bottles, Qing Dynasty, late 19th century**

ovoid, one carved in relief to the russet skin with a praying mantis and a cicada, stopper, 8,5cm high; the other carved with a *qilin* before a mountainscape, stopper, 7cm high (2)

R6 000–8 000

267



268

269

270

**Three Chinese cameo agate snuff bottles, Qing Dynasty, late 19th century**

the first carved in relief to the russet skin with a young boy and his hounds in a mountainscape, with low foot rim, stopper, *signed*, 7,7cm high; the second carved in relief to the russet skin with a full moon and a seated sage beneath a pine tree viewing a pair of geese, with low foot rim, stopper, 8,3cm high; and the third carved in relief with a pair of contesting dragons, stopper, 7cm high (3)

R9 000–12 000

270



271

**Three Chinese agate snuff bottles, Qing Dynasty, late 19th century**

the first carved in relief with two sages and their attendant beneath a pine tree, heightened with a full moon and a bat in flight before a rocky mountainscape, stopper, 8,8cm high; the second carved with three monkeys in a peach tree, with low foot rim, stopper, 7,3cm high; the third carved in relief with the figure of an Immortal proffering a peach to a young boy, with low foot rim, stopper, 6,5cm high (3)

R9 000–12 000

271



272

**A Chinese agate magnum snuff bottle, late 19th/early 20th century**

carved in relief with a scene of two seated gentlemen playing Go viewing two horse riders before a rocky mountainscape, with a pine tree, full moon and a bird with *lingzhi* in the distance, with low foot rim, stopper, 12,7cm high

R3 000–4 000

272





273

**273**  
**A Chinese cameo agate snuff bottle, Qing Dynasty, 19th century**

of rounded form, carved in relief to the russet skin with a sage and his horse in pursuit of *lingzhi* before a mountainscape, with low foot rim, stopper, *signed*, 7,7cm high

**R9 000–12 000**



274

**274**  
**A Chinese cameo agate magnum snuff bottle, early 20th century**

of rounded form, carved in relief with eight sages at various pursuits including playing the game of Go and the *guzheng* musical instrument, before a mountainscape, stopper, 10cm high

**R4 000–6 000**



275

**275**  
**A Chinese amber glass snuff bottle, late 19th/early 20th century**

flattened ovoid, the shoulders carved with a pair of *chilon*, their tails forming the foot rim, stopper, 7,5cm high

**R3 000–4 000**

276

**A Chinese agate snuff bottle,  
early 20th century**

etched and stained in relief with a mythical beast viewing three butterflies beneath a prunus tree, before a rocky outcrop, low foot rim, stopper, 7,7cm high; and a crystal snuff bottle, the front carved in relief with three deer beneath a flowering tree in a mountainous landscape, the reverse with a seated sage under a flowering tree, with low foot rim, stopper, 7,7cm high (2)

R6 000–8 000

277

**Three Chinese agate snuff  
bottles, Qing Dynasty, late  
19th century**

the first, ovoid with carved fluted body heightened with a picot border, with low foot rim, stopper, 6,8cm high; the second of lotus form, stopper, 6,5cm high; and the third of flattened round form, the shoulders with pierced lug handles, stopper, 6,3cm high (3)

R6 000–8 000

278

**A Chinese amber snuff bottle,  
Qing Dynasty, late 19th  
century**

the whole carved in relief with a pair of contesting dragons, the dragon's tail forming a low foot rim, stopper, 3,5cm high; and another example, the front and reverse carved with a bat viewing a peach, with low foot rim, stopper, 5,1cm high (2)

R8 000–10 000

276

277

278





279

**Two Chinese amber snuff bottles, late 19th/early 20th century**

the first of flattened ovoid form of honey tone, the front carved with *chilong*, with low foot rim, stopper, 6,5cm high; the second of double-gourd form carved in relief with fruit against a basketweave ground, stopper, 8,5cm high (2)

R4 000–6 000

280

**Five Chinese amber snuff bottles, early 20th century**

the first of fruit form carved with trailing foliage and branches, stopper, 5,5cm high; and four further examples variously carved with bats, fruit, a figure, birds, fish and water lilies, stoppers, the tallest 5,5cm high (5)

R10 000–12 000

281

**Two Chinese amethyst snuff bottles, early 20th century**

the first carved with a pair of ducks floating on a lily pad, stopper, 5,5cm long; the second carved in the form of a seated dog of *Fo*, his tail in the form of a stopper, 5cm long (2)

R4 000–6 000

279



280



281



282

**A Chinese amethyst snuff bottle, early 20th century**

carved with a peach supported on open branchwork embellished with fruit and foliage and heightened with a monkey to one side, agate bird-shaped stopper, 10cm high

R5 000–7 000

282



283

**Three Chinese crystal swan snuff bottles, early 20th century**

the first resting his head on his back with an ear of millet in his mouth, stopper, 6,5cm long; the second and third carved with a cygnet and ears of millet, stoppers, the longest 6cm long; and the fourth example carved with a pair of ducks on a lily pad, with branch-form foot rim, stopper, 5cm long (4)

R4 000–6 000

283



284

**Four Chinese crystal snuff bottles, early 20th century**

the first modelled as an elephant with a howdah on his back, stopper, 8cm high; the second in the form of a toad, his back carved with six coins, stopper, 6,8cm high; the third carved with two fruits intertwined with foliage, one carved with two beetles, stoppers, 6,5cm high; the fourth oblong, carved as a *chilong* chasing the moon, stopper, 10,5cm high (4)

R4 000–6 000

284





285

**285**  
**Two Chinese crystal snuff bottles, early 20th century**

the first carved as a double snuff bottle with a pair of recumbent horses, their tails in the form of stoppers, *6,8cm long*; the second carved with a *kylin*, his head turned towards a small boy on his back, stopper, *6,2cm long (2)*

**R4 000–6 000**



286

**286**  
**A Chinese smokey quartz crystal snuff bottle, Qing Dynasty, late 19th century**

of canister form with detachable cover, the sides with open lug handles threaded with a fine chain, with two amethyst-bead toggles, fixed stopper, *5,5cm high*

**R6 000–8 000**

287

**Three Chinese crystal snuff bottles, Qing Dynasty, late 19th/early 20th century**

the first carved as a double snuff bottle in the form of two peaches, the shoulders entwined with branches and leaves, the front carved with a bat, stoppers, *4,5cm high*; the shoulders of the second example carved with Buddhist lion handles, raised on a low foot rim, stopper, *9cm high*; and the third example, ovoid, engraved with two clouds, stopper, *6,3cm high* (3)

R5 000–7 000

288

**Five Chinese crystal snuff bottles in the form of Lohans, early 20th century**

in sizes, each standing holding their attribute, their hats in the form of stoppers, *9,5cm high* (5)

R10 000–12 000

289

**A pair of Chinese ivory snuff bottles of pelican form, 20th century**

etched and stained with red-lacquer cresting, the breast of each resting bird fitted with a stopper, *4cm wide* (2)

R4 000–6 000

\* This is not suitable for export.

287

288

289





290

**A Chinese rosewood altar table, 19th century**

the rectangular panelled top above a carved and pierced frieze, on square-section legs with double open sides, on scroll feet, *restorations*, 95cm high, 122cm wide, 44cm deep

R15 000–20 000



290

291

**A Chinese hongmu opium table, early 20th century**

with panelled rectangular top above curved legs and scroll feet, the pierced frieze carved with flowerheads and birds, 24,5cm high, 62,5cm long, 31,5cm deep

R6 000–8 000



291

292

**A Chinese ebonised and porcelain table, late 19th century**

hexagonal, set to the centre with a detachable circular blue and white plaque painted with a pair of contesting dragons enclosed by peonies and scrolling foliage, the border applied with three brass bosses, foliate-carved frieze on incurved legs with ball supports joined by a stretcher, on low bracket feet, 33cm high, 54cm wide; the plaque 30cm diameter

R6 000–8 000



292



293  
**A Chinese ebonised hardwood  
 and marble side table, late  
 19th/early 20th century**

the rectangular top inset with a rouge  
 marble plaque above an open frieze  
 centred by a foliate panel, on reeded  
 square-section legs, 51cm high,  
 42cm wide, 31cm deep

R4 000–6 000



294  
**A Chinese ebonised hardwood  
 and marble armchair,  
 19th century**

the saddle-shaped top rail above a  
 pierced back support carved with  
 a pair of *shi-shi* contesting a ball  
 amongst berries and foliage, marble  
 seat, shaped arms and carved  
 supports, on a conforming frieze, with  
 claw and ball feet; and a table, en  
 suite, 84cm high, 46,5cm square (2)

R18 000–24 000



295  
**A nest of four Chinese  
 hardwood tables, early  
 20th century**

each paneled top above a frieze  
 carved with leaves and berries,  
 on simulated bamboo legs and  
 stretchers, the tallest 70cm high,  
 49cm wide, 34,5cm deep, the smallest  
 40cm high, 32cm wide, 21,5cm deep (4)

R7 000–9 000





296

296

**A Chinese hardwood and inlaid display stand, early 20th century**

vase-shaped, the front and reverse inlaid in fine wirework with clouds and triangular motifs, with five open shelves, the frieze with open scrollwork, on scroll feet, *restorations*, 76,5cm high, 55,5cm wide, 20,5cm deep

R6 000–8 000



297

297

**A Chinese hardwood open stand, early 20th century**

with carved and pierced three-quarter gallery above an arrangement of open shelves, a cupboard door and a drawer, panelled and pierced sides with Buddhist emblems, on claw and ball feet, 106cm high, 55,5cm wide, 27cm deep

R7 000–9 000



298

**298**  
**A nest of four Chinese hardwood tables, 20th century**

each with rectangular top above a carved frieze, on moulded square-section legs and stretchers, on restrained scroll feet, *the tallest 66cm high, 51cm wide, 35cm deep, the smallest 49cm high, 28cm square (4)*

R7 000–9 000



299

**299**  
**A Chinese hardwood stand, early 20th century**

the front carved with five bats amongst flowering fruit, the reverse with stylised clouds and magnolias, the top with a large fruit carved with an aperture, *42,5cm high, 42cm wide, 19cm deep*

R4 000–6 000

**300**  
**A nest of four Chinese hardwood tables, 20th century**

each rectangular panelled top above a carved and pierced frieze, on shaped rounded legs and conforming stretchers, *the tallest 72cm high, 50,5cm wide, 36cm deep; the smallest 42cm high, 32,5cm wide, 22,5cm deep (4)*

R6 000–8 000



300



301

**A Persian painted ivory tile,  
20th century**

rectangular, painted with a seated young man being entertained by five musicians and a dancer before a wooded landscape, enclosed by gilt and black-line foliate borders, 13cm by 8,8cm; and another example painted with a hunter astride his black horse in pursuit of a deer, signed, 8cm by 13,2cm (2)

**R8 000–10 000**

\* This lot is not suitable for export.



301



302

**A Japanese okimono carving  
of Hotei, Meiji period  
(1868-1912)**

the standing figure holding a *lingzhi* in his left hand, a bamboo staff over his right shoulder suspending a bag embellished with a fan, his girdle suspending an *intro* and *netsuke*, staff with repairs and lacking end, signed with a red and black seal, 11,5cm high

**R12 000–15 000**

\* This lot is not suitable for export.



302

303

**A Japanese ivory okimono of  
a basket seller, Meiji period  
(1868-1912)**

wearing *waraji*, his *tabakoire* and *kiseru zutsu* suspended from his girdle, a bamboo pole over his right shoulder suspending baskets, his back laden with further baskets, top of staff lacking, signed in a rectangular red-seal, 12,5cm high

**R9 000–12 000**

\* This lot is not suitable for export.



303

304

**A Japanese ivory okimono of two young boys, Meiji period (1868-1912)**

one standing holding a fan carved with the image of a *bijin* in his right hand, his young companion on his back, each pointing to the sky with their left hands, *damage to the young boy's collar*, 9cm high

R9 000–12 000

\* This lot is not suitable for export.



304

305

**A Japanese ivory figural group, Meiji period (1868-1912)**

carved in Dragon Festival attire, the dancing figure with raised right leg, peeping from behind an open dragon mask, a bag at his left ankle, a small boy playing a drum concealed in the folds of his cloak, *signed in a red-lacquer reserve*, 15,3cm high

R9 000–12 000

\* This lot is not suitable for export.



305

306

**A Japanese ivory netsuke of a rat catcher, Meiji period (1868-1912)**

carved with a kneeling figure naked to the waist, his hands resting on a trap, his head turned to the left with mouth agape as a rat crawls over his left shoulder, *signed*, 3,3cm high; and another, of a fisherman attempting to open a clam, *signed*, 2cm high (2)

R5 500–7 000

\* This lot is not suitable for export.



306





307

**307  
A Japanese ivory carving of  
a basket maker and his child,  
Meiji period (1868-1912)**

the figure standing on a rocky outcrop with a sheaf of wheat resting on his thigh, peonies in his left hand, his right hand balancing his son in a basket on his head, raised on a low base, *signed*, 24cm high

**R5 000–7 000**

\* This lot is not suitable for export.



308

**308  
A Japanese ivory carving of  
a gardener and a small boy,  
Meiji period (1868-1912)**

modelled standing on a rocky outcrop with a pair of secateurs in his right hand, his left hand supporting a young boy on his shoulder holding a spray of leaves, raised on a low base, *signed with red script*, 25cm high

**R5 000–7 000**

\* This lot is not suitable for export.



309

**309  
A Japanese ivory carving of  
a fisherman, Meiji period  
(1868-1912)**

standing on a rocky seashore holding a net in his left hand with his right hand preventing his hat from blowing off his head, raised on a low base, *signed*, 32cm high

**R8 000–10 000**

\* This lot is not suitable for export.



310

**310  
A Japanese ivory carving of  
a fisherman, Meiji period  
(1868-1912)**

standing on a rocky seashore carved with fish and waves, holding a basket with fish in his left hand, his right hand holding a trident, raised on a low base, *signed*, 31cm high

**R8 000–10 000**

\* This lot is not suitable for export.



311

**A Japanese Imari charger,  
late 18th century**

with everted rim, the centre painted with a jardinière issuing 'The Three Friends' before a balustrade, the rim painted with sprays of chrysanthemums enclosing two panels painted with ducks enclosed by flowerheads against a blue-ground with gilt highlights, the reverse painted with sprays of peonies, *restored, 55cm diameter*

R8 000–10 000



311

312

**A massive Japanese Imari  
vase, Meiji period (1868-1912)**

ovoid, painted in enamels with a panel of a pair of contesting *kylin* amongst stylised waves before a flowering tree, the reverse similarly painted, enclosed by two contesting *ho-o* birds amongst maple leaves, the neck and base painted with mythical beasts, *some over-painting, firing fault, 93,5cm high*; and a carved hardwood stand, 22cm high

R9 000–12 000



312

313

**A Japanese Imari vase,  
Meiji period (1868-1912)**

with flared petal-shaped rim, elongated neck and ovoid body decorated with panels of birds amongst chrysanthemums before a rocky outcrop, views of pavilions before mountainscapes, enclosed by scrolling gilt foliage against an iron-red ground, *restored, 62cm high*

R8 000–10 000



313



314

**A Japanese Imari jardinière,  
Meiji period (1868-1912)**

the bulbous body with everted rim,  
painted with panels of 'The Three  
Friends', with peony blossoms,  
bamboo and pine trees enclosed by  
flowerhead rondels and *ho-ho* birds,  
24,8cm high

R6 000–8 000



314

315

**A Japanese Imari charger,  
Meiji period (1868-1912)**

the centre painted in underglaze-blue  
with foliage enclosed by a band of  
cranes in flight, against a gilt-ground,  
the reverse with sprays of blue  
flowers, 62,5cm diameter

R8 000–10 000



315

316

**A Japanese Imari jar and  
cover, Meiji period (1868-1912)**

the ovoid lightly ribbed body painted  
with panels of birds in a flowering  
tree enclosed by further flowers and  
foliage, the shoulder with lappet  
border painted with rondels and  
peonies, the cover similarly decorated  
and surmounted by a *karashishi*, some  
repairs to inner rim of cover, 57cm high

R4 000–6 000



316

317

**A Japanese Imari jardinière,  
Meiji period (1868-1912)**

the rounded body decorated with panels of birds above balustraded gardens enclosed by a profusion of flowerheads and foliage, the sides applied with a pair of dragon-shaped handles, raised on three bracket-shaped feet, *chips and repairs to the dragon handles*, 23,5cm high

R5 000–7 000



317



319

318

**Two Satsuma models of  
bodhisattvas, Meiji period  
(1868-1912)**

each decorated in polychrome enamels and gilding with *kiku-mon* amongst flowerheads, scrolls and foliage against a cream-glazed ground, the first of a standing figure of *Kannon*, barefoot and holding a lotus bloom in her right hand and a golden ball in her left, *the stem of the lotus bloom restored*, firing crack, signed and impressed seal, 36,5cm high; the second figure holding a small boy in her left arm, her right hand in *bhumisparsa*, her robes decorated with flying *ho-o* birds, signed, 39cm high (2)

R12 000–15 000



318

319

**A Japanese bronze figure of a  
crane, Meiji period (1868-1912)**

83cm high

R6 000–8 000



320

**A Cape silver tessie-on-stand,  
Daniel Heinrich Schmidt, late  
18th century**

with castellated and engraved  
everted rim, raised on three claw and  
ball feet headed by ovolo moulding,  
fixed copper liner, *455g all in, 9cm  
high*, secured by a silver nut and bolt  
to a stinkwood base, raised on three  
turned ebonised feet, *stand repaired,  
4cm high, 17,5cm diameter*

**R350 000–450 000**

**LITERATURE**

cf. Stephan Welz. (1976) *Cape Silver and  
Silversmiths*, Cape Town: A A Balkema.  
Similar examples are illustrated and  
discussed on pages 107 and 108.



321

**A Cape silver condiment spoon, Lodewyk Willem Christiaan Beck, 19th century**

with twist-turned stem, the shaped bowl with traces of gilding, the reverse moulded with a flowerhead and shell motif, *10g*; and a Cape silver Old English pattern konfyt fork, Johan Hendrik Vos, *15g (2)*

R3 000–4 000



321

322

**A Dutch brass salt box, dated 1778**

the pierced back-plate with scalloped and beaded rim moulded in relief with a flowerhead and the date 1778, the hinged cover with knob, the front moulded in relief with conforming decoration, scalloped foot rim, *the reverse of the back-plate with repair*, *19,5cm high*

R4 000–6 000

**PROVENANCE**

Mrs Kotie Roodt-Coetzee, Director, National Cultural History Museum (1965-1978)



322

323

**A Cape brass coffee pot and konfoor, F van As, 1882**

the pierced konfoor applied with a pair of ring handles, raised on three outswept feet, *restorations and minor dents*, *each stamped with the maker's mark*, *40cm high (2)*

R15 000–20 000



323



324

**A Cape of Good Hope Imperial brass bushel, de Grave, Short & Co, London, 1877**

engraved 'Govt. of Cape of Good Hope 1877', with turned ebonised handles, 22,2cm high, 67cm wide over handles

R80 000–100 000

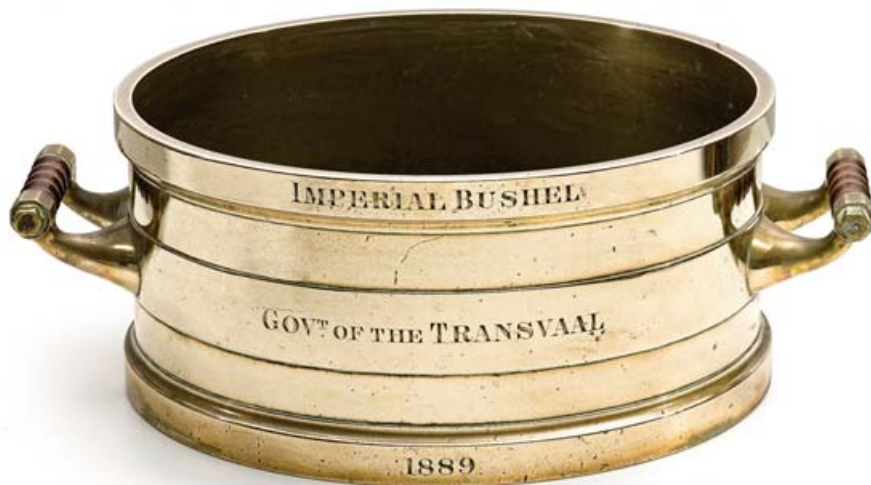


325

**A Transvaal Imperial brass bushel, 1889**

engraved 'Imperial Bushel, Govt. of the Transvaal, 1889', with turned teak handles, 22.5cm high, 65cm over handles

R60 000–80 000



326

**A large Victorian copper cauldron, 19th century**

the bulbous body with moulded rim, the sides applied with steel lugs and loop handle, the stepped cover applied with a strap handle, 39cm high

R6 000–8 000

327

**A large Victorian copper jug,  
19th century**

ovoid, raised on a low spreading  
foot rim, the side applied with a fixed  
handle, *dents*, 37cm high

R4 000–6 000



326

327

328

**A Cape stinkwood rusbank,  
late 18th century**

the rectangular back with carved  
wavy top rail above vase-shaped  
splats incorporating heart-shaped  
motifs, down-curved arms, caned  
seat, on chamfered square-section  
legs joined by reeded stretchers,  
*219cm long*

R30 000–40 000



328

329

**A stinkwood, rosewood and satinwood cabinet-on-stand, late 18th/early 19th century**

the outset cornice above a pair of panelled doors enclosing three shelves, in sizes, and three drawers, panelled sides above a frieze drawer, the stand on hexagonal legs joined by a *later* X-shaped stretcher centred by an oval plaque inlaid with a bone and ebony compass, on ball feet, *restorations and alterations, 212cm high, 172,5cm wide, 63,5cm deep*

**R140 000–160 000**

**PROVENANCE**

Mrs Kotie Roodt-Coetzee, Director, National Cultural History Museum (1965-1978)

330

**A Cape stinkwood neoclassical side chair, early 19th century**

with arched top rail above a pierced splat, caned seat, on tapering square-section legs joined by an H-shaped stretcher

**R4 000–6 000**

**PROVENANCE**

The Hans Fransen Collection

**LITERATURE**

cf: Hans Fransen. (1970) *die kaapse stoel*, Observatory: Stellenbosch Museum. A similar example is illustrated and discussed on page 64.



329



331

**A Cape stinkwood Queen  
Anne style side chair, early  
19th century**

with arched top rail above a vase-  
shaped splat, caned seat, on square-  
section legs joined by side stretchers,  
*restorations*

**R4 000–6 000**

**PROVENANCE**

The Hans Fransen Collection

**LITERATURE**

cf: Hans Fransen.(1970) *die kaapse  
stoel*, Stellenbosch Museum. Similar  
examples are illustrated and discussed  
on page 59



330



331

332

**A Cape stinkwood rusbank,  
19th century**

the rectangular top rail above a  
wavy and block mid-rail, riempie  
seat, on tapering square-section legs,  
*184cm long*

**R10 000–15 000**



332



333

**A Cape stinkwood and  
yellowwood cupboard,  
19th century**

with moulded outset cornice above a frieze inlaid with a diamond-shaped diaper border, with a pair of panelled cupboard doors below enclosing three shelves, panelled sides, on inlaid tapering feet, *154,5cm high, 132cm side, 59cm deep*

R30 000–40 000

334

**A Cape stinkwood  
candlestand, 19th century**

with circular dished top above a twist-turned column and faceted support, on three hipped and scroll feet, *restorations, 145cm high, 24cm diameter*

R6 000–8 000

**PROVENANCE**

Mrs Kotie Roodt-Coetzee, Director,  
National Cultural History Museum  
(1965-1978)

335

**A Cape stinkwood armchair,  
mid 19th century**

with curved top and mid rail, down-curved arm supports, caned seat on ring-turned baluster legs

R4 000–6 000

**PROVENANCE**

Mrs Mabel and Dr E.G. Jansen,  
Governor General of the Union of  
South Africa (1951-1959)



333



334



336

**336**  
**A yellowwood and stinkwood box, 19th century**

the hinged rectangular top enclosing a fixed compartment with aperture, the exterior and inside front inlaid with stinkwood bands, on a moulded base, the inside of the top inscribed in pencil *Pieter Johanes Volkwyn is de maaker gemaak op din eerstin diezember 1886*, and the name *Daan Willem Gericke*, lacking lock-plate, 17cm high, 38,5cm wide, 19,5cm deep

**R6 000–8 000**

**PROVENANCE**

The Hans Fransen Collection



337

**337**  
**A teak and ebony Boer War box, circa 1900**

rectangular, the hinged top applied with strapwork and inlaid corners, with brass handle, the front and sides applied with serrated ebony borders, some loss, 14cm high, 25cm wide, 10cm deep

**R10 000–12 000**

**PROVENANCE**

This box was made by the great-grandfather of the present owner, Diederick Johannes Kruger (born 1870), who was a POW and imprisoned in Ceylon during the Anglo-Boer War.



335

**338-360 No Lots**