





The Vineyard Hotel, Newlands, Cape Town
6 March – 11am

**Jewellery, Foreign silver, Decorative
Arts, Furniture, 20th Century Ceramics,
Glass and Collectables**

Lots 1–170

Lot 121 A Seguso cognac and yellow sommerso glass vase, Murano, 1960s (detail)



1

**1
Citrine and gold necklace**

composed of a series of collet-set pear and oval shaped citrines weighing approximately 24.00 carats accented with eight round brilliant-cut diamonds weighing approximately 0.25 carat to a fine curb link chain, *length approximately 435mm*

R8 000–10 000

**2
Single stone diamond ring**

claw-set to the centre with a round brilliant-cut diamond weighing 1.5470 carats, *size L½*

Accompanied by report no 161010622/112142 from EGL South Africa stating that the diamond weighing 1.5470 carats is I in colour and h in clarity

R40 000–42 000



2

**3
Diamond pendant**

claw-set with a round brilliant-cut diamond weighing approximately 1.49 carats, set to a tapering link and fine box-link chain, *length approximately 40mm*

R50 000–55 000

**4
Edwardian seed pearl and peridot pendant/brooch**

the openwork frame millegrain-set to the centre with a cushion-cut peridot enclosed by foliate scrollwork highlighted with seed pearls, pear-shaped peridot drop, detachable seed pearl bale, *length approximately 60mm*

R5 000–7 000



4

3





5

5
Edwardian sapphire and seed pearl necklace

set to the front with three sprays of flower clusters claw-set with sapphires to a knife-wire link, the leaves set with seed pearls, to a fine curb chain with bolt clasp embellished with seed pearls, *length approximately 475mm*

R10 000–12 000



6

6
Sapphire and diamond brooch

designed as a bar, claw-set to the centre with an oval-shaped sapphire weighing approximately 5.30 carats with two Old European-cut diamonds weighing approximately 1.35 carats, *width approximately 50mm*

R80 000–90 000



7

7
Sapphire and diamond necklace

designed as a series of alternating knife-edge links embellished with round brilliant-cut diamonds and oval links each claw-set to the centre with a sapphire surrounded by round brilliant-cut diamonds, with central drop pendant, *length approximately 420mm*

R10 000–15 000



8

8
Portrait of a Gentleman, 18th century

oval, wearing a red coat, white chemise and lace jabot, his powdered hair caught in a ribbon, engraved gold frame, *length approximately 32mm*

R4 000–6 000

* This lot is not suitable for export.



9

10

9
Italian 14ct gold necklace
 designed as a series of textured brick links, length approximately 460mm
 R10 000–12 000

10
Diamond ring
 claw-set to the centre with a princess-cut diamond weighing 2.0140 carats, the shoulders set with two round brilliant-cut diamonds, size M½
 Accompanied by report no. 160711968/111004 from EGL South Africa stating that the diamond weighing 2.0140 carats is G in colour and SI1 in clarity
 R130 000–135 000

11
Gilt-metal mounted jade seal
 the mottled stone of pale green tone, set to a gilt-metal mount embellished with coral, turquoise and red stones, the inset crystal intaglio engraved with a crest, some gilding and stone loss, length approximately 100mm
 R6 000–8 000

12
Gold and tortoiseshell lorgnette, French, late 19th/early 20th century
 gold framed folding glasses with spring mechanism to a tortoiseshell cover applied with a vacant oval cartouche, with an oval-shaped ring, French gold assay marks, length approximately 85mm
 R5 000–7 000



11



12

13
**Cartier 18ct gold 'Tank
 Basculante' manual reversible
 gentleman's wristwatch**

the 20mm white enamel dial with Roman numerals, black inner minute track, blued-steel hands, the hinged rectangular case designed to pivot within the rectangular backplate to conceal the reverse brushed-gold dial, each with crown at 12 o'clock, nickel-finished lever movement and bimetallic compensation balance, brown crocodile leather strap with 18ct gold Cartier deployment clasp, *dials and deployment clasp signed Cartier, Ref 033181, width approximately 24mm*

R30 000–40 000

14
**Three 'tortoiseshell' combs,
 circa 1900**

each set with emerald and rose-cut diamonds, *some damage to the teeth of the combs, width approximately 95mm* (3)

R9 000–12 000

* This lot is not suitable for export.



13



14
 part lot



15



16



17



18

15
Edwardian diamond and pearl brooch

the cut-cornered rectangular plaque of open-work design, millegrain-set with alternating pearls and rose and Old European-cut diamonds, weighing approximately 5.00-5.20 carats, width approximately 88mm

Pearls untested and unwarranted

R40 000–45 000

16
Pair of smoky topaz and diamond earrings

each claw-set to the centre with a smoky topaz surrounded by cognac and round brilliant-cut diamonds to a half diamond-set hoop, *with post fittings, length approximately 33mm (2)*

R6 000–8 000

17
Pair of diamond earrings

each designed as a cross, claw-set with ten Old European-cut diamonds weighing approximately 1.75 carats, *screw fittings (2)*

R20 000–25 000

18
Pair of diamond and pearl ear pendants, 1920s

each designed as an articulated line of collet and millegrain-set eight-, rose- and arrow-cut diamonds weighing approximately 1.65 carats, suspending a pearl drop with a cap highlighted with rose-cut diamonds, *post and butterfly fittings with French assay mark, length approximately 47mm. Purchased from Missiaglia, Venezia, 1962, cased.*

Pearls not tested and unwarranted (2)

R25 000–30 000

19



19

Tsovorite and diamond dress ring

claw-set to the centre with an oval-cut tsovorite surrounded by round brilliant-cut diamonds, the shoulders channel-set with baguette and round brilliant-cut diamonds weighing approximately 1.30-1.40 carats, size L

R12 000–15 000

20

Italian diamond necklace

claw-set with one hundred and twenty-six graduated round brilliant-cut diamonds weighing approximately 14.95 carats, length approximately 420mm

R100 000–110 000

20

21
part lot

21

Emerald pendant

set with two cushion-cut emeralds weighing 10.105 and 10.40 carats, to a fixed bale, length approximately 44mm; with silver chain (2)

Accompanied by report number 0014 from The Jewellery Council of South Africa stating that the emerald weighs 10.105 carats. Accompanied by report number 0013 from The Jewellery Council of South Africa stating that the emerald weighs 10.40 carats. Accompanied by report No 14-G-7050 from the GGTL Laboratories, Switzerland stating that the two green cushion shaped emeralds weighing 10.10 carats and 10.39 carats have minor enhancement and are of natural origin

R300 000–350 000

22



22

Emerald and diamond five stone ring

claw-set with two cushion-cut emeralds and three old-cut diamonds weighing approximately 0.65 carat, size O; and a five stone diamond ring, claw-set with old-cut and a round brilliant-cut diamond weighing approximately 1.10 carats, size O (2)

R7 000–9 000



23
Italian 18ct gold necklace
 composed of a series of fancy interlocking links, *inner circumference approximately 390mm*; and a pair of earrings, *en suite, with post and butterfly fittings, length approximately 35mm (3)*
R55 000–58 000

24
Unset emerald-cut diamond weighing 1.1000 carats
Accompanied by report number 161220151/205086 from EGL South Africa stating that the diamond weighing 1.1000 carats is J in colour and VVS2 in clarity
R40 000–42 000

25
Italian 18ct gold bracelet, 1970s
 composed of textured and pierced interlocking links, *length approximately 205mm*
R18 500–20 000



25

**26
Diamond ring**

claw-set to the centre with a round brilliant-cut diamond weighing approximately 0.72 carat, surrounded by ten round brilliant-cut stones weighing approximately 0.38 carat set to a collet rectangular-shaped frame, size W½

R30 000–35 000

**27
Single-stone diamond ring,
Kurt Jobst**

collet-set with a round brilliant-cut diamond weighing 1.0308 carats, size N

Accompanied by report number 40698549/23849 from EGL South Africa stating that the diamond weighing 1.0308 carats is G in colour and VS2 in clarity

R45 000–50 000



27



26

**28
Italian 18ct gold necklace**

composed of a series of rope-twist links, length approximately 920mm

R30 000–32 000

**29
Victorian gold snake bangle**

woven in the form of a coiled snake, its mouth agape and eyes set with a red stone, some damage, one eye lacking stone

R9 000–12 000



28



29



30

31

32

33

30
Pair of diamond and South Sea earrings

each surmount millegrain-set to the centre with a cushion-cut diamond enclosed by a rectangular frame millegrain-set with fourteen round brilliant-cut diamonds, above a detachable South Sea pearl, *post and butterfly fittings (2)*

R30 000–35 000

31
Diamond necklace

designed to the front with three rows of collet-set round brilliant-cut diamonds, set to geometric and annular links set with baguette and round brilliant-cut diamonds, with two further rows of diamonds set to a beaded chain, *inner circumference 445mm*

R50 000–55 000

32
Diamond eternity ring

pavé-set with round brilliant-cut diamonds weighing approximately 3.60 carats, *size N*

R25 000–30 000

33
Lady's gold and ruby dress watch, Bucherer, 1940s

the square champagne-coloured dial with applied dot and baton markers, part-bezel, the shoulders set with eight-cut diamonds and calibre-cut rubies, the unadjusted seventeen jewel nickle-lever escapement stamped 'Tevo', with gas-pipe link strap and adjustable locking clasp, *not in working order, the inside of the case stamped 0.750, the back stamped 16471, length approximately 180mm*

R10 000–12 000



34

34

Ruby and diamond necklace

designed as a series of fancy links set with oval, emerald and round-cut rubies weighing approximately 22.00-25.00 carats, highlighted with eight-cut, round brilliant-cut and baguette diamonds weighing approximately 9.00-10.00 carats to a three-stone ruby clasp, *inner circumference approximately 390mm*

R130 000–140 000



35

35

Edwardian diamond ring

designed as two vertically claw-set old-cut diamonds weighing approximately 2.40 carats, between a band of six old-cut diamonds, *size H½*

R160 000–180 000



36



37



38



39

**36
Diamond and gold pendant**

collet-set with a pear-shaped diamond weighing approximately 2.00-2.10 carats, with conforming bale, *length approximately 27mm*

R250 000–260 000

**37
18ct gold bracelet**

with curb links, *length approximately 220mm*

R22 000–24 000

**38
Pair of amethyst and silver-gilt cufflinks, Links, London, 1995**

each of dumb-bell form joined by a curb-link chain, *length approximately 30mm*; another pair, set with malachite, *length approximately 30mm*; and a pair of silver and tiger's eye cufflinks, Exquisite Jewellery Ltd, London, 1980, set to a T-bar connector, *length approximately 25mm* (6)

R3 000–4 000

**39
Tiffany diamond and gold-mounted spinach green jade cigarette case**

the front mounted with the initial P millegrain-set with diamonds, with hinged compartment, *indistinctly etched Tiffany & Co, length approximately 85mm*

R30 000–40 000

40



40
Sapphire and diamond ring
 collet-set to the centre with an oval-cut sapphire flanked by a half row of channel-set baguette-cut diamonds weighing approximately 0.80 carat, enclosed by claw-set round brilliant-cut diamonds weighing approximately 0.45 carat, *size N*
R15 000–18 000

41
Sapphire and diamond necklace

claw-set to the centre with seven oval-cut sapphires weighing approximately 3.50 carats between half-crescent links pavé-set with round brilliant-cut diamonds weighing approximately 0.95 carat, to an arrowhead shaped link chain, *length approximately 410mm*

R20 000–25 000

41



42



42
Diamond and gold brooch
 designed as a ballerina, the figure's head claw-set with a pear-shaped diamond, *length approximately 68mm*
R3 000–4 000

43
Tiffany & Co 14ct gold and sapphire-mounted sterling silver cigarette case, New York, early 20th century

rectangular, the hinged cover engraved with radiating panels and applied with a gold mitre-shaped motif inlaid with a line of calibre-cut sapphires, conforming thumbpiece, gilt interior, the inside cover engraved with the initials JHL, *stamped Tiffany & Co, 14k, STERLING, 135g, 85mm wide*

R8 000–10 000

43





44

44
Italian 18ct gold bracelet

designed as a series of three coloured gold brick-shaped links, *length approximately 175mm*

R14 000–16 000

45
Diamond and gold dress ring, 1960s

claw-set to the centre with a round brilliant-cut diamond weighing 1.4270 carats to a trapezoid textured frame with square-shaped shank, *size N½*

Accompanied by report number 160720080 from EGL South Africa stating that the diamond weighing 1.4270 carats is M in colour and VVS2 in clarity

R42 000–45 000

46
Italian 18ct gold necklace

composed of a series of brick-links, *length approximately 420mm*; and a gold ring, *en suite, size M (2)*

R24 000–26 000



45



46

46

47
George VI 9ct gold cigarette case, JW Benson Ltd, London, 1937

the hinged rectangular engine-turned body with conforming thumbpiece, the interior with inscription, *length approximately 110mm*

R22 000–24 000



47

48

Pair of lapis lazuli and diamond cufflinks, H Stern

each designed as a faceted baton link embellished with a line of pavé-set round brilliant-cut diamonds to a T-bar connector, *cased, length approximately 25mm (2)*

R15 000–20 000

49

Patek Philippe 'Calatrava' diamond, sapphire and gold ring

designed as a series of vertical spaced sections bordered by two bands pavé-set with fifty-four round brilliant-cut diamonds weighing approximately 0.80 carat, the outer rim embellished and collet-set with six cabochon-cut sapphires, *size L*; and a pair of earrings, *en suite*, set with sixty round brilliant-cut diamonds weighing approximately 0.90 carat, the outer rim collet-set with twelve cabochon-cut sapphires, *post and clip fittings, signed Patek Philippe, French assay marks (3)*

R40 000–50 000

50

Diamond and gold ring, 1940s

designed as a bow embellished to the centre with sixteen claw-set eight-cut diamonds, *size S*

R8 000–10 000

51

Italian 18ct gold bracelet

designed as a series of waisted bow-shaped and arched links, *length approximately 190mm*

R32 000–35 000



48



49



49



50

51





52

52
**Lady's 9ct gold nécessaire
and aide mémoire compact,
possibly Joseph Walton,
London, 1908**

the front and reverse engraved
with initials, enclosing a sectioned
compartment, mirror, ivory *aide
mémoire* and card compartment, with
later loop fitting and chain, *interior*
engraved *GE Kerr. Ballyrush*, width
approximately 80mm (2)

R20 000–22 000

* This lot is not suitable for export.

53
Italian 18ct gold necklace

composed as a series of entwined
rope and plain curb links, length
approximately 480mm

R15 000–17 000

53

54
18ct gold necklace

designed as a series of flattened curb-
links, length approximately 445mm

R14 000–16 000

55
18ct gold necklace

composed of a series of flattened curb-
links, length approximately 475mm

R20 000–22 000

54

55



56 part lot

56
Diamond and gold suite

comprising: pair of earrings, ring, bracelet and necklace, each set to the centre with stepped V-shaped motifs heightened with claw-set round brilliant-cut diamonds to a fancy-link chain, *length of necklace approximately 435mm (5)*

R15 000–20 000



57

57
**Patek Philippe gold openface
 keyless lever watch, early
 20th century**

the 44mm white enamel dial with Brequet numerals and subsidiary seconds, with blued-steel spade hands, gilt lever movement signed and numbered 146056, bi-metallic compensation balance, cam wheel regulator, 18ct gold cuvette, signed and numbered 248134, gold polished case engraved with the Fraser crest, *case, dial, cuvette and movement signed, 50mm diameter*

R40 000–60 000



58

58
9ct gold lorgnette

gold framed glasses, set to an engraved handle with loop terminal; and a pair of 9ct gold cufflinks, maker's initials ACCP, Birmingham, oval, set to a bar-link with conforming back (3)

R3 000–4 000

58



59

59
Chalcedony bead and gold necklace

each bead with pierced and engraved flower-cup mount, *length approximately 355mm*

R4 000–6 000



60

60
Lady's gold evening bag, early 20th century

the two-tone gold mesh bag set to a frame with central clasp embellished with two synthetic cabochon-cut sapphires, to a *later* curb link chain, *width approximately 130mm*; and a gold coin purse, with engraved frame, *width approximately 60mm (2)*

R52 000–56 000

60



61

Diamond ring

collet-set to the centre with a round brilliant-cut diamond weighing 1.44 carats surrounded by a band of twenty-four channel-set diamonds, *size M½*

Accompanied by report number 27182 from The Jewellery Council of South Africa stating that the diamond weighing 1.44 carats is H in colour and VVS1 in clarity

R100 000–110 000

62

Diamond and gold bracelet

designed as a series of alternating gold and diamond-set links, *length approximately 195mm*

R6 000–8 000

63

Art Deco crystal, diamond and enamel dress set, 1930s

comprising: a pair of cufflinks and a pair of dress studs, circular, each set to the centre with a band of claw-set old European-cut diamonds with black enamel borders (4)

R25 000–30 000

64

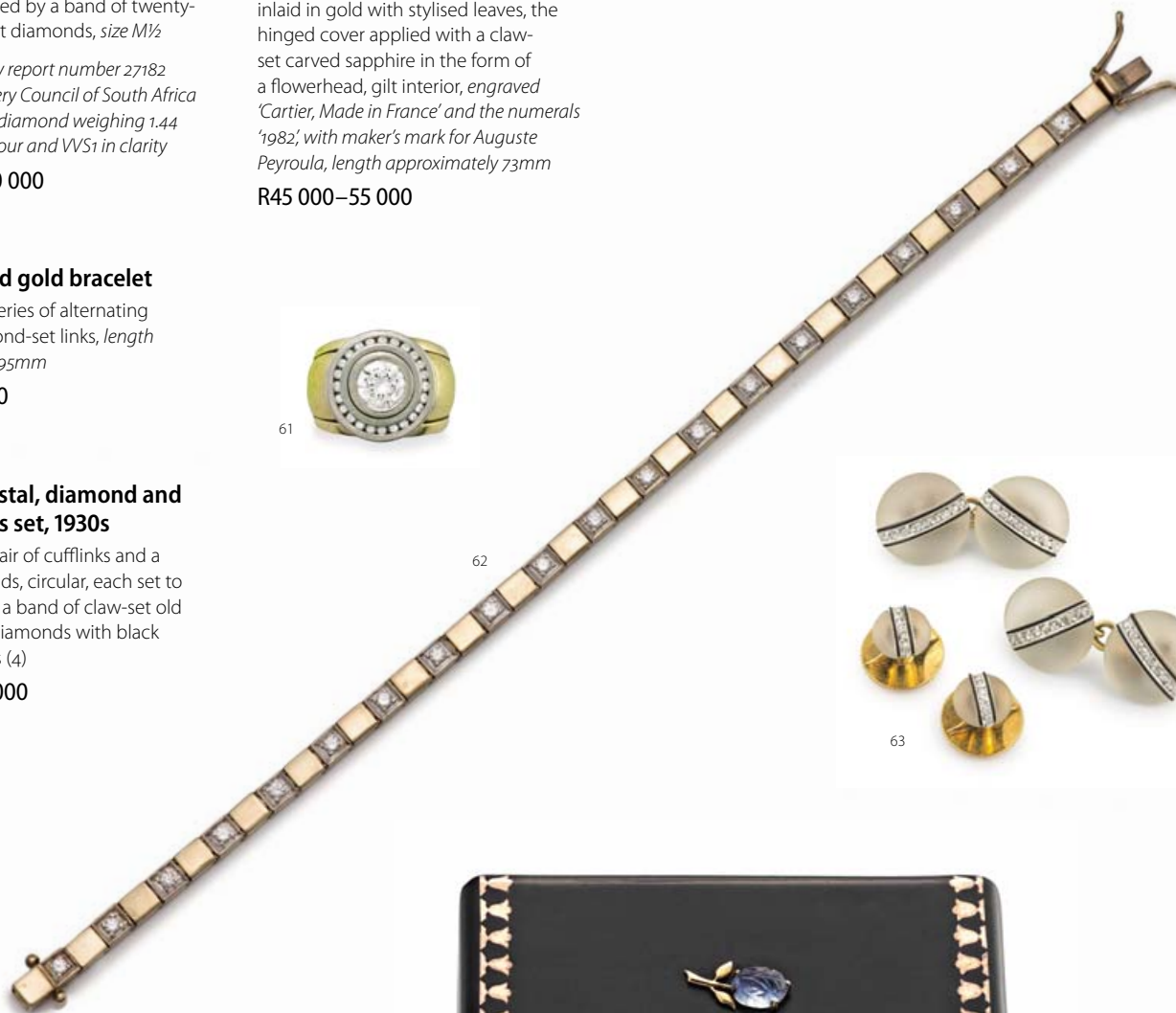
Art Deco black lacquer, gold and silver-gilt box, Cartier

rectangular, the black enamel body inlaid in gold with stylised leaves, the hinged cover applied with a claw-set carved sapphire in the form of a flowerhead, gilt interior, *engraved 'Cartier, Made in France' and the numerals '1982', with maker's mark for Auguste Peyroula, length approximately 73mm*

R45 000–55 000



61



62



63



64



65

65
Kupittaaan Kulta moss agate and sterling silver ring, Finland, .925 sterling, 1960s

designed as two open engraved leaves united by ball terminals and centring a cupped moss agate bead, *stamped with the maker's marks, .925 S, size N*

R1 500–2 000



66

66
Elis Kauppi silver Flower Cup ring, for Kupittaaan Kulta, Finland, .925 sterling, 1960s

set to the centre with hemispherical-shaped petals centred by a bead. *stamped with the designer's initials, .925 S, size M½*

R1 500–2 000



67

67
N.E. From silver and tiger's eye ring, Denmark, .925 sterling, 1960s

collet-set to the centre with a tiger's eye cabochon-cut stone, bi-furcated shoulders, *stamped STERLING, DENMARK, N.E. FROM, .925 S, size M½*

R800–1 000



68

68
Kupittaaan Kulta silver and carnelian pendant, Finland, .925 sterling, 1970s

the pierced ball frame with loose carnelian bead, *link stamped with the maker's mark, .925 S, length approximately 45mm; and a sterling silver box-link chain, length approximately 700mm (2)*

R4 000–6 000



69

69
Anna Greta Eker silver Crown bracelet, Norway, .925 sterling, 1960s

the tapering terminals headed by three balls, stamped with maker's initials, AGE, STERLING 925 NORWAY, inner circumference approximately 215mm

R5 000–7 000

70
Georg Jensen silver Duck pendant, .925 sterling, post 1945

designed in 1952 after a Henning Koppel design, stamped Georg Jensen, .925 S, height approximately 25mm

R1 500–2 000

71
Single stone diamond ring

claw-set with a round brilliant-cut diamond weighing approximately 0.75 carat, size I

R20 000–22 000



71

72
Omega gentleman's seamaster chronostop tonneau-shaped stainless steel wristwatch, Ref. 145.008, circa 1970

the 35mm black dial with white chapter ring, applied silver baton markers accented by luminous dots, cream-coloured luminous hands with orange chronograph hand, outer rotating black bezel with Arabic five minute divisions, bezel crown at 10 o'clock, and pusher at 2 o'clock, cal. 865 manual 17 jewel movement, the case-back engraved with Omega seamaster logo, with stainless steel bracelet and folding clasp, dial and movement signed, 45mm

R22 000–26 000



70



72



73

73
A Victorian silver-gilt and enamel mounted ruby-glass double-end scent bottle, maker's initials 'HF', London, 1859

with faceted body, one end with engraved screw top, the other with hinged top enclosing a glazed compartment, each top with applied enamel and silver-gilt plaque, *traces of gilt, 13cm long*; and another, apparently unmarked, each top engraved with c-scrolls and flowerheads, *hinged top faulty, 12,8cm long (2)*

R2 500–3 000



74

74
A Victorian silver-gilt-mounted amber-coloured glass double-end scent bottle, S Mordan & Co, London

the body cut with printies and mounted with an engraved hinged top enclosing a spring-loaded glazed compartment, screw top to the opposite end enclosing a glass stopper, *engraved S Mordan & Co, makers, 15cm long*; and a lime-green glass example, the tops engraved with scrolls and flowerheads centring a vacant oval cartouche, *13cm long (2)*

R2 000–2 500



75

75
A Victorian silver-gilt-mounted blue-glass vinaigrette and scent bottle, Sampson Mordan & Co, London, 1871

flask-shaped, the top with hinged cover, the base with hinged cover enclosing a gilt interior and pierced grille engraved with a basket of flowers, *9,2cm high*

R5 000–7 000



76

76
A Victorian gilt-metal-mounted novelty 'binocular' clear glass double-end scent bottle

cut with printies, the centre with hinged portrait compartment, one end with screw top, the other hinged, *13,5cm long*

R1 500–2 000



77

77
A Victorian gilt-metal-mounted novelty 'binocular' blue-glass double-end scent bottle

with faceted sides, the centre hinged, engraved tops, one end with screw top, the other hinged, *13cm long*

R1 500–2 000



78

78
A Victorian green-glass and silver-plate mounted double-end scent bottle

faceted sides, one with a screw top, the other with hinged top enclosing a stopper, *13cm long*; and another example, similar, *10,5cm long* (2)

R1 200–1 500



79

79
A sterling silver-mounted cornucopia-shaped blue-glass vinaigrette and scent bottle, 19th century

with faceted glass body, detachable chain-linked covers, one enclosing a vinaigrette compartment with detachable pierced grille, the other fitted with a glass stopper, *stamped 'Sterling', 9cm wide*; a Victorian novelty brass-mounted green-glass double scent bottle in the form of 'Opera Glasses', with hinged covers set to engraved bases, *7cm high*; and an Edward VII silver-mounted pink-glass scent bottle, CC May & Sons, Birmingham, 1905, faceted body with a star-cut base, with glass stopper, *3,7cm high* (3)

R2 500–3 000

80
Two Victorian green-glass and silver-plate mounted double-end scent bottles

each with faceted body, hinged top and fitted with a stopper, the other end with screw top, *each 10cm long* (2)

R800–1 000



80

81

**A Russian silver casket,
Moscow, 1908-1926, assay
master Ivan Sergeevich
Lebedkin (1898-1914)**

rectangular, the hinged cover
applied with a vacant rope-twist
oval cartouche bordered by stylised
c-scrolls, gilt interior, the front
engraved with flowers and ribbons,
the sides applied with pierced handles,
raised on bracket feet, 465g, 7,5cm high

R7 000–9 000

81



82

**A Russian silver and niello
cigarette case, Kazan, 1908-
1926, assay master Ivan
Andreyevich Ado (1899-1916)**

rectangular, the centre engraved
with a vacant rondel enclosed by
foliage with ribbed borders and
cross-hatched corners, the reverse
enclosing a river scene engraved
with a windmill and houses, 115g, 10,5cm
wide; and a Czechoslovakian silver
cigarette case, maker's initials 'FB', .900
standard, rectangular, the hinged
covers profusely engraved with leaves
and flowerheads, the interior engraved
with initials, 75g, 7,8cm wide (2)

R6 000–8 000

82 part lot



83

**A Russian silver cigarette case,
Caucasus, 1908-1926**

rectangular, the front engraved with a
spray of summer flowers, an inscription
and dated 1917, the reverse engraved
with a view of wooden churches, 135g,
11cm wide; and another, Moscow, 1908-
1926, assay master for Viktor Savinkov,
engraved with initials enclosed by an
arch with ribbons, the interior with an
inscription, 120g, 10,5cm wide (2)

R8 000–10 000

83





84

84
A Russian silver cigarette case,
Moscow, 1908-1926, maker's
mark 'NK' in Cyrillic

rectangular, engraved with fans,
 rondels and foliate swags, cabochon-
 set blue-stone thumbpiece, 185g,
 12cm wide

R4 000–5 000



85

85
A Russian silver lady's purse,
Moscow, 1908-1926, maker's
mark 'NK' in Cyrillic

rectangular, engraved with a central
 foliate band and column, cabochon-
 set red-stone thumbpiece, with open-
 link chain, 230g, 16,2cm wide

R4 000–5 000



86

86
A Russian silver cigarette case,
Moscow, 1908-1926, Pyotr
Petrov (1908-1917)

the rectangular repoussé body
 depicting a warrior on a rocky
 platform warning off a pair of
 firebirds, the rising sun in the distance,
 cabochon-cut glass thumbpiece, 215g,
 11,4cm wide

R5 000–7 000

87
Two silver-plated and amber-
mounted parasol handles

each with beaded and engraved
 borders, the longer 27,5cm long (2)

R4 000–6 000

88
A silver-plated and black
enamel parasol handle

embellished with bands and diagonal
 dot markers, 14,5cm long; and a
 Russian niello, silver-plated and
 amber-mounted parasol handle,
 17,5cm long (2)

R2 000–3 000

89

A German silver-mounted glass casket, JD Schleissner & Söhne, Hanau, circa 1900, .800 standard

kidney-shaped, the hinged cover and base moulded in relief with figures in a tavern enclosed by vignettes of country life within c-scroll and foliate borders, the borders heightened with vacant cartouches, the glass body etched with garlands and the sides with buildings and a boat, *455g of weighable silver, 13,5cm high*

R7 000–9 000



90

A German silver-mounted and glass decanter set, post 1886, .800 standard

the pierced cylindrical frame moulded in relief with putti playing with a goat within a balustraded garden, on a spreading circular foot, the four detachable triangular shaped glass flasks with silver collars, the glass stoppers mounted with foliate caps headed by figures, *the frame 270g, 24,5cm high (s)*

R5 000–7 000



91

A silver spice box, early 20th century

of bombé form, the hinged cover applied with a flowerhead, the fluted sides raised on four foliate-headed outswept feet, *stamped MS833, 255g, 12cm high*

R3 000–4 000

92

A German silver two-handled gallery tray, post 1886, .800 standard

shaped rectangular with wavy rim and canted corners, the pierced gallery decorated with rondels centred by stars incorporating openwork handles, raised on four bun feet, *1680g, 46cm wide over handles*

R9 000–12 000





93

93
A Viennese cold-painted bronze, retailed by Nissel & Sikora, late 19th century

modelled as a dancing maiden, brandishing a sword and standing on a colourful carpet, *45,5cm high*, on a mottled green marble socle, applied retailers' plaque, *7,5cm high*

R9 000–12 000



94

94
A French bronze figure of 'Le Char d'Aurore', cast from the model by Auguste Moreau (1834-1917), late 19th century

the draped figure atop a shell-shaped chariot and holding aloft a billowing scarf, attended by a putto holding the reins of a pair of birds, *the back of the shell signed 'Auguste Moreau'*, to a marble base, *84,5cm high excluding base, 87,5cm high including base*

R80 000–100 000



95

95
A Meissen figural group,
19th century

modelled with the standing figure of a young mother supporting her child in her arms, her young son standing behind her clutching her robe, on a rocky base moulded with summer flowers, *some damage, underglaze-blue crossed swords, impressed numerals 2642, painted 38 in black, 11,5cm high*

R5 000–7 000



96

96
A French gilt-metal and
silvered marble-mounted
figurative mantel clock,
19th century

of Napoleonic interest, the 7,6cm white enamel dial with Roman numerals and pierced black hands, bell-striking silk suspension movement, set into a drum case surmounted by the figure of Napoleon mounted on his horse, the front with white marble panels applied with an eagle and pierced foliate plaques, raised on scroll and shell front feet, *39cm high*

R20 000–25 000



97

**A Sèvres style gilt-metal mounted
porcelain pedestal bowl, late 19th century**

signed C.Rochette, the oval body painted with a pastoral scene of a courting couple, the reverse painted with a landscape enclosed by foliate borders, the sides applied with ribbed and foliate scroll handles, the interior painted with garlands of summer flowers against a white ground, raised on a tapering column and moulded base, on a leaf-and-berry plinth with bracket feet, overpainted pseudo Sèvres mark, 32,7cm high; and a pair of porcelain and gilt-metal mounted cassolettes, late 19th century, each urn-shaped body painted with a tableau of the Muses, the detachable covers with pineapple finials, raised on a fluted column, applied in relief with a leaf-and-berry swag, on a square stepped plinth base, chips, gilding loss, formerly with chains, 34cm high (3)

R12 000–16 000



98

98
A French oak cupboard,
18th century

the moulded rectangular two-plank top with canted corners above panelled sides, the front with a pair of drawers above panelled cupboards enclosing a shelf, on bun feet, *restorations, 124cm high, 143cm wide, 39cm deep*

R12 000–15 000



99

99
An Italian carved oak
cupboard, 19th century

profusely carved with panels of figures and inscribed 'FIDES TEMPERATI IVSTITIA CARITAS' enclosed by leaf and flowerhead borders, the front stiles with figural terms enclosing a *later* hanging rail, the base with a frieze drawer, on scroll feet, *the reverse painted with 'Inventory 1897, Hall', 196,5cm high, 135cm wide, 50,5cm deep*

R20 000–25 000



100

A Dutch walnut display cabinet, 19th century

the moulded cornice with central C-scroll cresting above a pair of glazed doors and sides enclosing three shelves, the lower half with two long drawers, raised on paw and ball feet, 238cm high, 184cm wide, 48cm deep

R40 000–50 000

PROVENANCE

Mrs Kotie Roodt-Coetzee, Director, National Cultural History Museum (1965-1978)



101

101
A pair of Louis XV style walnut
fauteuils

each with arched shaped padded
 back, padded arm supports, on fluted
 legs (2)

R10 000–15 000



102

102
An Empire mahogany roll-top
secrétaire, 19th century

the rectangular inlaid top above a
 frieze drawer, the roll-top enclosing
 an arrangement of nine drawers
 flanking open compartments, with
 pull-out writing slide above three
 long graduated drawers, on bracket
 feet, *130cm high, 113,5cm wide,*
54cm deep

R30 000–40 000

103

An Art Deco macassar and ivory inlaid gentleman's dressing set, probably French

of geometric outline bordered with ivory inlays, comprising: a hand mirror, a hair brush, a shoe horn, an eau de toilette bottle and a covered jar, the bottle 13,3cm high (5)

R3 000–4 000

* This lot is not suitable for export.



103

104

A Swedish sterling silver cigarette case, Haglund Studio, Stockholm, 1946

rectangular, the hinged cover embossed with a dragon, his tail encircling a flowerhead, stamped 'Haglund Studio, Sweden', 285g, 16,7cm wide

R1 500–2 000

104



105

A pair of French silver-plate candlesticks, Jean Després (1885-1980), 1950s

each with cylindrical column raised on a hammered square base with four spheres, the socket of hemispherical form, etched 'J - Després', 15,6cm high; and a French silver-plate chalice, Jean Després (1885-1980), 1950s, etched 'J - Després', 14,8cm high (3)

R30 000–40 000



105

106

A Danish silver flask, Roif Fritiof Bratland (fl.1956-1973), Copenhagen, 1941, .830 standard

rectangular with straight sides, fitted with a pierced strainer, the ribbed cover with cork gasket, 525g all in, 18,8cm high

R7 000–9 000

106



107

A Danish sterling silver blossom pattern bonbonnière, Georg Jensen, Copenhagen, 1933-1944, .925 standard

oval, the hammered body raised on four zoomorphic feet, the cover with bud finial, stamped Denmark, Sterling 2, 320g, 9,3cm high

R20 000–30 000

107



108

A pair of Danish sterling silver sauce boats, designed by Nanna Ditzel for Georg Jensen, Copenhagen, 1933-1944

in sizes, each lightly hammered body with applied scroll and circular disc handle, raised on a spreading oval foot, stamped Denmark, Sterling, 321A and 321B, 560g all in, the taller 12,3cm high (2)

R30 000–40 000

108



109

A three-piece Danish sterling silver coffee set, Søren Sass for Anton Michelsen, Copenhagen, 1950s

comprising: a coffee pot, hot water jug and sugar bowl, applied with ebonised and ivory inlaid handles, stamped 'A. Michelsen, Copenhagen', 1505g all in, the coffee pot 20,5cm high (3)

R25 000–30 000

* This lot is not suitable for export.



109

110

A Danish sterling silver blossom pattern pedestal dish, Georg Jensen & Wendel, Copenhagen, 1945-1951

designed by Georg Jensen, circular, the hammered body with pierced rim decorated with three bud and bead motifs, raised on a low circular foot, stamped Georg Jensen and Wendel, A/S, 2A, 355g, 19,5cm diameter

R15 000–20 000



110

111

A Danish sterling silver tazza, Georg Jensen, Copenhagen, 1945-1977

designed by Georg Jensen, with hammered bowl, raised on a leaf-and-berry stem to a spreading circular foot, the under foot rim engraved 'Anne & Otto February 1974 from Marina & Daddy', stamped Denmark, Georg Jensen, Sterling, 263 A, 270g, 13cm high

R12 000–15 000



111



112

112
A set of twelve Georg Jensen
sterling silver underplates,
mid 20th century

each hammered body with fold-over
 beaded rim, *stamped Georg Jensen,*
Denmark, Sterling, 210 N, 8125g all in,
28cm diameter (12)

R120 000–150 000

113
A Danish teak two-handed
tray, Jens Quistgaard, Dansk
Designs, mid 20th century

oval, the split gallery incorporating
 carrying handles, *stamped designer*
mark, 65,5cm wide over handles

R4 000–6 000



113



114

114
A silver monkey table lamp,
No. 2, Patrick Mavros, Harare,
9 September 1999

modelled with four grey vervet
monkeys cavorting around a tree
trunk, *fitted for electricity*, 4915g,
50cm high, *excluding light fitting*

R280 000–300 000



115

115
A silver monkey table lamp,
No. 2, Patrick Mavros, Harare,
1 October 1999

similar to the previous lot, *fitted for*
electricity, 4645g, 50cm high, *excluding*
light fitting

R280 000–300 000

116

**A stoneware bottle vase with
flared lip, 1970s, Dame Lucie
Rie (1902-1995)**

*impressed LR monogram seal,
27,5cm high*

R120 000–150 000

PROVENANCE

Peter Dingley Gallery, 8 Chapel Street,
Stratford-upon-Avon



117

**A stoneware sgraffito pedestal
bowl, 1980's, Dame Lucie Rie
(1902-1995)**

with depressed circular centre issuing
stippled lines, *moulded potter's seal*,
10cm high, 23,5cm diameter

R80 000–100 000

PROVENANCE

Peter Dingley Gallery, 8 Chapel Street,
Stratford-upon-Avon



118

**A porcelain bowl, 1980s,
Dame Lucie Rie (1902-1995)**

golden manganese glazed rim and
body divided by a green and pink-
checked band, *impressed potter's seal*,
9cm high

R80 000–100 000

PROVENANCE

Peter Dingley Gallery, 8 Chapel Street,
Stratford-upon-Avon



119

Two flattened stoneware bottles, 1980s, Joanna Constantinidis (1927-2000)

in sizes, each with ring neck, *impressed potter's seal*, the taller 19,5cm high, both bearing retailer's paper label (2)

R8 000–10 000

PROVENANCE

Peter Dingley Gallery, 8 Chapel Street, Stratford-upon-Avon

120

Two stoneware vases, 1980s, Colin Pearson (1923-2007)

in sizes, each of flattened oval form, applied with winged-form handles, *impressed potter's seal*, the taller 18,5cm high, each applied with retailer's paper label (2)

R8 000–10 000

PROVENANCE

Peter Dingley Gallery, 8 Chapel Street, Stratford-upon-Avon

119

120





121

121
A Seguso cognac and yellow sommerso glass vase, Murano, 1960s

ovoid, with shortened neck,
19,7cm high

R8 000–12 000



122

122
A Seguso amber, red and clear sommerso glass vase, Murano, 1960s

ovoid, with shortened neck, traces of gilt label, *28,5cm high*

R8 000–12 000

123
A Seguso Vetri d'Arte green, pale ochre and clear sommerso glass vase, Murano, 1960s

designed by Flavio Poli for Seguso, flattened ovoid, *31,5cm high*

R8 000–12 000

124
A Seguso opaline glass bowl with gold inclusions, Murano, 1960s

oval, of ribbed shell-shaped form with wavy rim, the sides applied with rope-twist handles, *15,5cm high*

R6 000–8 000



123



124



125

125

A Seguso glass bowl, Murano, 1950s

oval, the clear glass body with gold inclusions, 34,5cm wide

R5 000–7 000

126

A pair of Seguso glass pheasants, Murano, 1950s

each with gold inclusions, raised on a clear ribbed base, minor abrasions to each tail end, 31,5cm high (2)

R6 000–8 000



126

127

A Seguso glass duck, Murano, 1950s

the clear glass body with gold inclusions, turquoise glass eyes, raised on a lily pad base, internal abrasion to the foot rim, 27cm high

R4 000–6 000



127



128

128
A Seguso orange and aquamarine sommerso glass basket, Murano, 1970s

oval with moulded arched handle,
22cm high

R4 000–6 000



129

129
A Seguso red, purple and blue sommerso glass basket, Murano, 1970s

oval with moulded arched handle,
25cm high

R4 000–6 000



130

130
A Seguso purple and blue sommerso glass vase, Murano, 1960s

with elongated neck and ovoid body,
39,4cm high

R3 000–4 000



131

131
**A Seguso pale cerise and
amethyst sommerso glass
vase, Murano, 1960s**

*with flared neck and ovoid body,
31,5cm high*

R3 000–4 000



132

132
**A Seguso aquamarine, cognac
and clear sommerso glass
vase, Murano, 1960s**

cylindrical, 21,8cm high

R3 000–4 000



133

133
**A cobalt blue, crimson, and
clear sommerso glass vase,
Murano, 1960s**

ovoid, 19,5cm high

R3 000–4 000



134

**134
A Seguso crimson and
aquamarine sculptural glass
lamp, Murano, 1960s**

*of tubular abstract form, set on a
shaped base, small blemishes to the
body, applied paper label, fitted for
electricity, 21cm high*

R3 000–4 000



135

**135
A crimson and aquamarine
glass vase, Murano, 1970s**

*tapering oval with ribbed sides,
28cm high*

R4 000–6 000



136

**136
A red and green glass
sculpture, Murano 1970s**

*of spiral form, set to a square clear
glass plinth, some chips to the plinth,
32,5cm high*

R3 000–4 000

137

An Archimede Seguso opaline and gold vase, Murano, 1980s

flattened ovoid with slightly flared rim, the body suffused with diagonal lines of lozenges, *engraved Archimede Seguso Murano, applied oval gilt and red paper label, 20,8cm high*

R6 000–8 000



137

138

A cobalt blue and clear glass vase, Murano, 1970s

of compressed circular form, *minor internal bruise, 11,5cm high*

R3 000–4 000



138

139

A silver-mounted Loetz iridescent glass vase, with import marks for JHW, Birmingham, 1902

with garlic mouth and shortened neck, the tapering body raised on a moulded circular foot, the overlaid silver engraved and stippled with flowers and foliage between stippled and lozenge borders, *rim possibly reduced, 14,5cm high*

R4 000–6 000



139

140

A René Lalique St Tropez frosted and clear glass vase

introduced in 1937, the tapering body moulded with vertical bands of floral decoration, *minor chip to rim, engraved Lalique, France, 18,1cm high*

R6 000–8 000

Marilhac number 10-915



140



142

141
Two Lalique frosted and clear glass cendriers, modern

one centred with the figure of a falcon, the other with a pinson, stencilled Lalique, France, the taller 6cm high (2)

R2 000–3 000



143

142
A David Reade handblown glass vase, 2004

blown in shades of orange, yellow and burnt sienna, engraved D Reade, 04, 27,8cm high

R6 000–8 000

143
A David Reade handblown glass vase, 2005

with moulded rim and central band in shades of grey and white, the body blown in shades of grey, green and purple, engraved D Reade, 05, 28,3cm high

R6 000–8 000



144

144
A David Reade handblown glass bowl, 2005

blown in shades of yellow and burnt sienna with flecks of yellow, the body moulded with a clear and white band, engraved D Reade 05, 20,2cm high

R5 000–6 000

145

**A David Reade handblown
glass sculpture, 2006**

with flattened sides, the clear glass
body internally blown with coral,
cobalt blue and black floating forms,
engraved D Reade 06, 40cm high

R8 000–10 000

145



146

**A David Reade glass bowl and
stand, 1995**

circular, blown in shades of pink,
blue and green, *engraved D Reade 95,*
51,5cm diameter; the clear glass circular
stand raised on three blue glass ball
feet, *one foot glued, 18,5cm diameter (2)*

R5 000–7 000

146





147

A Chinese silver-mounted ebonised walking stick, late 19th/early 20th century

the handle moulded in relief with dragons and four-character rondels, brass ferrule, *length 90cm*; and a Burmese silver and malacca example, late 19th century, the handle moulded in relief with deities and birds, brass ferrule, *length 89,5cm* (2)

R6 000–8 000

148

A brass-mounted rosewood carpenter's walking stick, 19th century

the screw-top handle set with twelve miniature tools, brass-turned cap, horn ferrule, *length 91cm*

R3 000–4 000

149

A brass-mounted mahogany walking stick, mid 19th century and later

the handle fitted with a naval compass enclosing a detachable telescope signed T Harris & Son, London, with *later* brass-mounted hardwood shaft, ebonised ferrule, *length 90,5cm*

R4 000–6 000

150

A Victorian ivory and walnut walking stick

the handle carved with the head of a dog with glass eyes, moulded brass collar and ferrule, *length 85,5cm*; and an ebonised walking stick, the silver-plate handle modelled as a pointer, brass ferrule, *length 92cm* (2)

R6 000–8 000

151

A Victorian ivory and silver-mounted malacca walking stick, Ebenezer Newman & Co, London, 1891

the fluted handle with silver buckle collar engraved with foliage and initials, metal ferrule, *ivory repaired, length 89cm*; and a late Victorian silver-mounted malacca walking stick, Birmingham, 1899, moulded with figural masks and foliage, with sleeve and metal ferrule, *length 87cm* (2)

R5 000–7 000

152

A gilt-metal mounted ebonised walking stick, late 19th century

the top inscribed 'WKR from his nephew TKR' embossed with foliage, *later* metal ferrule, *length 89cm*; and an Edwardian silver-mounted and porcelain ebonised walking stick, maker's initials J&W, Birmingham, 1901, painted with a courting couple against a pink ground, horn ferrule, *length 91cm* (2)

R4 000–6 000



153
An American silver-plated and mother-of-pearl mounted rosewood walking stick

the *associated* handle engraved with foliage and small flowerheads, brass ferrule, *length 92cm*; and an abalone and metal-mounted mahogany walking stick, with faux ivory screw cap enclosing a void above a fluted sleeve, horn ferrule, *length 95cm* (2)

R4 000–6 000

154
A faux ivory and bamboo walking stick

the handle moulded with the head of a bulldog wearing a studded collar above a brass sleeve, copper ferrule, *length 89cm*; and another example, the handle moulded with a head of a hound with mouth agape and wearing a collar, above a brass sleeve, simulated bamboo shaft, brass ferrule, *damage, length 90cm* (2)

R1 500–2 000

155
A George V silver-mounted and simulated bamboo walking stick, Thomas Davis, London, 1914

the crook-shaped handle engraved with foliage enclosing a silver-plated propelling pencil, Wilmot & Co, the terminal set with a yellow stone, brass ferrule, *dents, length 88cm*; and another example, Charles Wilkes, Chester, 1911, the crook-shaped handle mounted with silver collar and terminal, brass ferrule, *length 90cm* (2)

R4 000–6 000

156
A World War II brass cartridge handle and ebonised walking stick, 1942

applied with regimental insignia, the shaft applied with a triangular-shaped plate, *lacking ferrule, dents, the cartridge stamped '1942, 20mm, K2' (Kynoch, Standish, United Kingdom), length 88,5cm*; and a brass-mounted mahogany single-shot tippler's cane with screw top enclosing a glass vial, the shaft with two brass bands and brass ferrule, *length 87cm* (2)

R2 000–3 000

157
A Victorian style mahogany walking stick stand

the pierced circular frame and base united by a turned column and headed by a turned handle, raised on three compressed bun feet, *73,5cm high, 27cm diameter*

R4 000–6 000



157

158

A Louis Vuitton monogram canvas metal and brass-bound hat box

covered in Louis Vuitton canvas, brass-bound corners and studs, the interior with original lining and two detachable webbed baskets, the sides with black-painted metal handles, *date model number 'Louis Vuitton 798112', lock number 'BESGLG', lockplate stamped '149 New Bond Street London' and '70 Champs-Élysées', initialled 'M.L.A.', applied with paper travel labels, age appropriate wear, 53cm high, 61cm wide, 47,5cm deep*

R30 000–40 000

158



159

A Louis Vuitton monogram canvas metal and brass-bound shoe case

covered in Louis Vuitton canvas, brass-bound corners and studs, the interior lined in brown felt and fitted with twelve shoe compartments with elasticised and pleated fronts, *handle with repair, date model number 'Louis Vuitton 804293', lock number 'E1', initialled 'M.L.A.', some damage, 21cm high, 61cm wide, 53,5cm deep*

R20 000–25 000

159



160

**Preface by HRH Charles,
The Prince of Wales**

*The Highgrove Florilegium, Volumes I
and II*

Two volumes, limited to 175 copies, this edition number 43/175, signed by HRH, The Prince of Wales who commissioned the work 124 watercolour reproductions depicting plants grown in the garden at Highgrove, each with descriptive text, signed by the artist and numbered in pencil, with AG Carrick Ltd, 2008 stamp bearing plate and set numbers in pencil

London: Addison Publications Ltd, 2008 and 2009.

half red goatskin with marbled paper boards, and gold leaf tooling on spine each with handmade green felt book cover with maroon ties, in a fitted wooden box

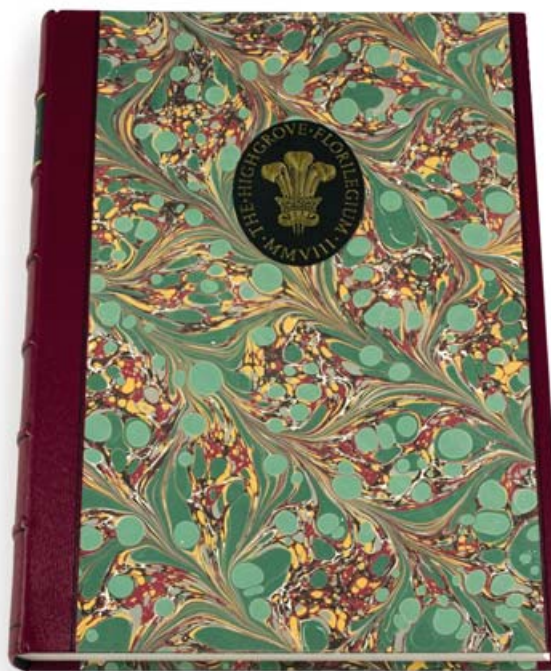
(2)

R120 000–150 000

The book includes illustrations by 60 artists from around the world. The South African artists included are: Diana Carmichael, Gillian Condy, Ann Judith Harris-Deppe, Margaret King and Vicki Thomas. Many of these artists have exhibited and won medals at the Kirstenbosch Biennale. This is the only Royal Florilegium ever to be commissioned.

For further information on the production of the book see the following link: <https://vimeo.com/173756701>

161-170 No Lots



160

