



The Vineyard Hotel, Conference Centre,
Newlands, Cape Town
Monday 14 March – 11.00am

Jewellery, Vertu and
English Silver, Decorative Arts
and Furniture

Lots 1–160

A selection from a private collection of snuff boxes



1



2



3

1

Georgian diamond 'target' ring

claw-set to the centre with a rose-cut diamond enclosed by two bands of further rose-cut diamonds, with closed back setting, set to a *later* trifurcated shank, *size H*

R20 000–24 000

2

Diamond and pearl dress ring

the openwork circular frame millegrain-set with old-cut diamonds weighing approximately 3.75 carats, centred by a pearl measuring approximately 8.20mm, to a *later* shank, *altered*, *size L*

R30 000–35 000

3

Five-strand pearl and diamond necklace

the graduated pearls measuring approximately 4.50 to 9.00mm, the clasp centred by an old-cut diamond weighing approximately 0.45 to 0.50 carat flanked by a tinted black pearl and a white pearl, enclosed by ten old-cut diamonds weighing approximately 0.50 to 0.60 carat in total, *inner length approximately 450mm*

R25 000–30 000



4



5



6

4

Ruby, seed pearl and miniature portrait locket pendant/brooch, 19th century

oval, painted with a portrait of a lady in 18th century attire, the gold and black enamel frame enclosed by collet-set seed pearls and rubies, the reverse with hinged aperture enclosing two glazed compartments, set to a bale, *later* pin, two seed pearls lacking, length approximately 40mm excluding bale

R15 000–20 000

5

Diamond and chalcedony cameo pendant/brooch, late 19th/early 20th century

oval, carved in relief with the profile of a lady in period attire, to a *later* frame and bale set with 62 claw-set rose-cut diamonds weighing approximately 1.50 to 1.60 carats in total, length approximately 55mm

R15 000–20 000

6

Late Victorian diamond, ruby and gold bracelet, retailed by Collingwood & Co, London

the curb-link chain centred by the head of a fox set with cabochon ruby eyes and rose-cut diamonds, length approximately 180mm; retailer's case

R5 000–6 000

7

Diamond single-stone ring

collet-set to the centre with an old mine-cut diamond weighing approximately 1.80 carats, size S½

R24 000–26 000

7





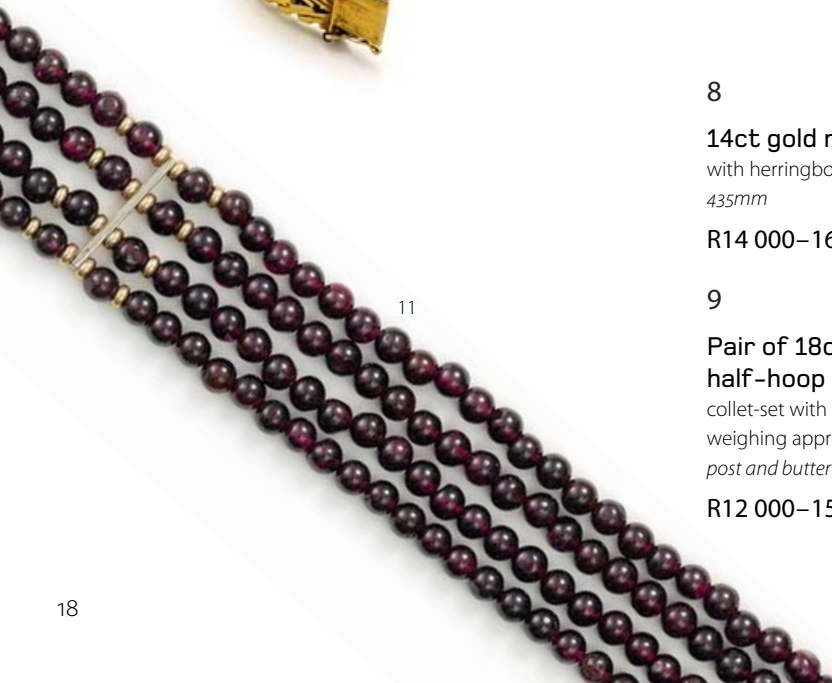
8



9



10



11

8

14ct gold necklace

with herringbone links, *length approximately 435mm*

R14 000–16 000

9

Pair of 18ct gold and diamond half-hoop earrings, Piaget, 1991

collet-set with round brilliant-cut diamonds weighing approximately 0.25 carat in total, *post and butterfly fittings (2)*

R12 000–15 000

10

18ct gold dress ring

realistically modelled in the form of a snarling jaguar with round brilliant-cut diamond eyes, the back of his head and integrated penannular band both textured, *size I*

R15 000–20 000

11

Four-strand garnet choker

the garnet beads measuring approximately 4.60 to 4.80mm, with metal spacers and a collet-set cabochon garnet metal clasp, *length of shortest row approximately 365mm*

R6 000–8 000



12

12

Emerald and pearl brooch

designed as a spray, centred by a pearl measuring approximately 8.00mm, enclosed by an arc of oval and round claw-set emeralds weighing approximately 7.00 carats, width approximately 45mm

R8 000–10 000

13

Unset round brilliant-cut diamond

weighing 3.2800 carats

Accompanied by report number 160120434/203096 from EGL South Africa stating that the diamond weighing 3.2800 carats is P in colour and VS2 in clarity

R170 000–180 000

13



14



14

**Two-stone diamond ring,
David Thomas, London**

claw-set with two round brilliant-cut diamonds weighing approximately 1.10 carats in total, stamped with maker's initials, size K

R30 000–32 000

15

**Diamond, emerald and 18ct gold
bracelet**

the articulated basket-weave bracelet with rounded terminal and rope-twist-bordered reeded clasp claw-set with round emeralds and round brilliant-cut diamonds weighing approximately 0.30 carat, adjustable, length approximately 221mm fully extended

R35 000–40 000

15





16

16

South-East Asian 22ct gold bangle, 5th–9th century

with three coiled and beaded flowerheads flanked by coils, *inner diameter approximately 65mm*

R50 000–60 000



17

17

Pair of South-East Asian 20ct gold ear ornaments, 9th–12th century

each penannular, with granulated and beaded decoration (2)

R 15 000–20 000



18

18

18ct gold necklace

textured to the front, *length approximately 420mm*

R25 000–28 000



19

19

Pair of ruby and diamond earrings

collet-set to the centre with a round-cut ruby, enclosed by pavé-set round brilliant-cut diamonds weighing approximately 0.60 carat in total, *screw fittings* (2)

R6 000–8 000



20

Indian 19ct gold pendant necklace

designed as a fringe, the foliate border suspending spherical beads, set to the centre with a conforming hinged pierced leaf-shaped drop collet-set with red and white stones, to a *fixed* clasp, *two stones lacking*, inner circumference approximately 680mm

R120 000–140 000

21



21

Sapphire and diamond ring

the open oval frame pavé-set with 18 eight-cut diamonds weighing approximately 0.18 carat in total, the shoulders heightened with four claw-set round-cut sapphires weighing approximately 0.35 carat in total, *size I*

R5 000–7 000

22

Diamond ring

claw-set to the centre with a round brilliant-cut diamond weighing approximately 0.15 carat, flanked by a pair of baguette-cut diamonds weighing approximately 0.16 carat in total, *size N*; and a diamond ring, claw-set to the centre with a round brilliant-cut diamond weighing approximately 0.15 carat, flanked by channel-set baguette-cut diamonds weighing a total of approximately 0.30 carat, *size N (2)*

R8 000–10 000

22



23

Lady's diamond and 18ct white gold watch, Omega, 1970s

the lapis lazuli dial with white enamel hands, enclosed by 30 round brilliant-cut diamonds weighing approximately 0.90 carat, 17 jewel manual winding Swiss movement adjusted to 2 positions, with an integral pierced and textured bracelet to an adjustable Omega clasp, *case and dial signed, the dial chipped and repaired, length approximately 165mm, dial width approximately 17mm*

R25 000–30 000

24

Eight-strand baroque freshwater pearl and diamond necklace

the strands united by a pair of semi-spherical and circular diamond-set clasps, the pavé-set round brilliant-cut diamonds weighing a total of approximately 6.00 to 6.50 carats, length approximately 775mm, the clasps are detachable to form two shorter necklaces, lengths approximately 425mm and 350mm

R35 000–40 000

24



23



25

25

Sapphire and diamond ring

designed as a flowerhead, claw-set with six oval-cut sapphires weighing approximately 1.50 to 1.80 carats, interspersed with claw-set round brilliant-cut diamonds weighing approximately 0.15 carats in total, *size M*

R5 000–7 000

26

Unset round brilliant-cut diamond

weighing approximately 0.54 carat

R15 000–16 000



26

27

Lady's diamond and 18ct white gold watch, Chopard, 1976, Ref 62949

the rectangular silvered dial with applied baton markers and lance hands, enclosed by 68 round brilliant-cut diamonds weighing approximately 2.00 to 2.20 carats, manual winding Swiss movement, to an integral textured woven bracelet, *crown and clasp signed 'LUC', case stamped '5028 77549', length approximately 170mm, dial width approximately 18mm; presentation case and certificate*

R35 000–40 000



27





28

28

Lady's Oyster Perpetual steel and 18ct gold watch, Rolex, 1970s

the matte black dial applied with gilt baton markers accented by luminous dots, with gilt and luminous baton hands, magnified date aperture at 3 o'clock, and fluted gold bezel, the nickel lever escapement with mono-metallic screw balance wheel adjusted to temperature and 5 positions, to an integral bracelet with Omega deployant clasp, *dial and clasp signed, dial diameter approximately 21mm*

R15 000–20 000



29

29

Three-stone diamond ring

claw-set to the centre with a round brilliant-cut diamond weighing approximately 0.55 carat, flanked by two collet-set round brilliant-cut diamonds weighing approximately 0.10 carat in total, *size L*; and a conforming yellow and white gold band, *size L½ (2)*

R14 000–16 000

30

Diamond single-stone ring

claw-set to the centre in an openwork foliate frame with a round brilliant-cut diamond weighing approximately 0.50 carat, *size K½*

R16 000–18 000



30

31

Silver and citrine necklace

the curb links accented by gold bars, collet-set to the centre with an oval-cut citrine weighing approximately 7.60 carats, *length approximately 380mm*

R5 000–7 000

32

Diamond and quartz necklace

the fine link chain collet-set to the centre with a rectangular-shaped pale blue quartz with a collet-set round brilliant-cut diamond weighing approximately 0.45 carat to the left, *length approximately 400mm*

R12 000–15 000



31

32



33

Nine strand pearl and garnet choker

the strands united by three silver spacers, the oval silver clasp frame claw-set with white stones enclosing a detachable collet-set cabochon garnet fitting weighing approximately 30.00 carats, *length approximately 335mm*; a blue topaz fitting weighing approximately 30.00 carats; a lemon citrine fitting weighing approximately 30.00 carats; and a 9ct gold collar, *inner circumference approximately 330mm* (4)

R8 000–10 000

34

A diamond ring

claw-set to the centre with a round brilliant-cut diamond weighing 0.503 carat enclosed by round brilliant-cut diamonds weighing approximately 0.37 carat in total, *size M½*; and a half eternity diamond band weighing approximately 0.15 carat, *size O* (2)

Accompanied by report number 130203079 from EGL South Africa stating that the diamond weighing 0.503 carat is I in colour and VS2 in clarity.

R20 000–22 000



33 topaz fitting



33 citrine fitting



34



33 garnet fitting



35

35

10ct gold necklace

the two-tone rope-twist chain set to a clasp in the form of a hand with a turquoise ring, length approximately 800mm

R12 000–15 000



36



37 part lot

36

Ruby and gold 'hand' clasp

the hand entwined with a serpent, the cuff channel-set with a double row of rubies, length approximately 37mm

R1 200–1 500

37

A Victorian silver-gilt novelty propelling pencil, Sampson Mordan & Co, circa 1842

in the form of a hand, with ornate cuff and collet-set ruby ring, the terminal inlaid with a citrine, engraved 'S.MORDAN AUG 3 1842 No 1390', the citrine with damage, length approximately 51mm fully extended; three 'hand' stickpins, formerly clasps; a 'hand' clasp; an ivory and gilt 'hand' pendant; a 'hand' pendant; and a pendant in the form of a ewer (8)

R6 000–8 000

38

18ct gold ring

the brushed gold band with a flat table applied with the model of a hand adorned with an emerald 'ring' to the index finger and foliate channel-set ruby cuff, size H½; and a 'hand' brooch, with an old-cut diamond 'ring', the anthemion-fringed cuff set with an emerald and old-cut diamond band, the diamonds weighing a total of approximately 0.25 to 0.30 carat, width approximately 31mm (2)

R10 000–12 000

38





39

39

40

39

Diamond, synthetic sapphire and gold bracelet

composed of seven openwork circular plaques, each heightened by a pair of opposing c-scrolls and silver leaves centred by a part-collet-set baguette-cut synthetic sapphire, the plaques connected by openwork links centred with a claw-set round brilliant-cut diamond weighing approximately 0.70 carat in total, *length approximately 198mm*; and a pair of conforming earrings, the diamonds weighing approximately 0.30 carat in total, *post and clip settings (3)*

R30 000–35 000

40

Diamond brooch

designed as a floral stem with textured leaves, the flower claw-set with old-cut diamonds weighing approximately 0.85 carat, *length approximately 48mm*

R4 000–6 000

41

Lady's diamond and 18ct gold watch, Piaget, 1970s

the brushed gold dial with black baton markers and lance hands, the bezel set with eight-cut diamonds weighing approximately 0.45 to 0.50 carat, 18 jewel manual wind movement adjusted to temperature and 5 positions, the integral pierced textured bracelet with adjustable clasp, *the case stamped '9235 155725', the movement stamped '689032', length approximately 170mm, dial width approximately 19mm*

R20 000–25 000

41





42

42

Double-strand pearl, ruby and diamond necklace

the pearls measuring approximately 8.70mm to 9.30mm, the openwork millegrain- and pavé-set diamond clasp centred by a collet-set ruby, the round brilliant-cut diamonds weighing approximately 0.40 carat, *length approximately 455mm*

R10 000–15 000



43

43

Diamond and platinum ring

the millegrain-set pierced frame collet-set to the centre with an old-cut diamond weighing approximately 0.80 carat, flanked by ten old-cut diamonds, *size O½*

R18 000–20 000



44

44

Pair of Edwardian ruby and diamond pendant earrings

the drops set with alternating bands of square and round-cut rubies and millegrain-set old- and eight-cut diamonds weighing approximately 1.60 carats, to a diamond-shaped ruby link suspended from a diamond-centred flowerhead, *later post and butterfly fittings, one ruby lacking, length approximately 28mm (2)*

R15 000–20 000

45

Diamond ring

claw-set to the centre with a pear-shaped diamond weighing 0.9600 carat, flanked by a pair of trillion-cut diamonds weighing approximately 0.80 to 1.00 carat in total, *size L*

R60 000–65 000



45



46

46

Pair of diamond and pearl earrings

the flowerhead settings claw-set with round brilliant-cut diamonds weighing approximately 0.45 carat in total, to a pearl measuring approximately 8.00 to 8.50mm, *post and button fittings* (2)

R12 000–15 000

47

Unset round brilliant-cut diamond

weighing 0.9100 carat

Accompanied by report number 160120089/203012 from EGL South Africa stating that the diamond weighing 0.9100 carats is F in colour and VVS2 in clarity.

R40 000–45 000

47



48



48

Diamond bracelet

centred by a buckle motif set to graduated, articulated, arrow-shaped links, pavé-set throughout with round brilliant-cut diamonds weighing approximately 7.00 carats, *length approximately 175mm*

R65 000–70 000

49

Single-stone diamond ring

part claw-set to the centre with an emerald-cut diamond weighing approximately 0.48 carat, *size O½*

R10 000–12 000

49



50



50

Ruby and diamond ring

claw-set to the centre with an oval-cut ruby weighing approximately 2.20 carats, enclosed by eight-, baguette- and round brilliant-cut diamonds weighing approximately 0.85 carat, to bifurcated shoulders, *size N*

The ruby not authenticated for any treatment.

R60 000–80 000



51

52



53

54



51

Lady's diamond and white gold cocktail watch, Jaeger-Le Coultre, 1960s

the circular silver dial applied with dot and baton markers, the bezel set with eight round brilliant-cut diamonds, manual back-wind lever movement, to a pierced bracelet with rope borders, *stamped '184044'*; length approximately 160mm, dial diameter approximately 9mm; cased

R9 000–10 000

52

Sapphire and diamond dress ring

claw-set to the centre with a rectangular step-cut sapphire enclosed by claw-set round brilliant-cut diamonds weighing approximately 1.15 carats, *size P½*

R15 000–20 000

53

Diamond pendant/brooch

designed as a spray, heightened with claw-set round brilliant-cut diamonds weighing approximately 0.50 carat, suspending a pear-shaped diamond drop weighing approximately 1.15 carats, *length approximately 50mm*

R42 000–45 000

54

Diamond and tanzanite dress ring

collet-set to the centre with an old-cut diamond weighing approximately 0.75 carat, enclosed by eight-cut diamonds weighing approximately 0.30 carat in total, the shoulders with collet-set pear-shaped tanzanites weighing a total of approximately 1.60 to 1.70 carats, *size N*

R8 000–10 000



55

55

A diamond brooch

designed as a floral and ribbon spray, the yellow and white gold frame claw-set with round brilliant- and eight-cut diamonds weighing approximately 0.80 to 0.85 carat, *length approximately 55mm*

R6 000–8 000

56

Diamond ring

claw-set to the centre with a round brilliant-cut diamond weighing 3.0160 carats, the shoulders collet- and claw-set with baguette- and eight-cut diamonds, *size M*

Accompanied by report number 80900467/53763 from EGL South Africa stating that the diamond weighing 3.0160 carats is H in colour and VS2 in clarity.

R230 000–240 000



56

57



57

Ten-strand pearl and diamond necklace

the strands united by a buckle clasp pavé-set with round brilliant-cut diamonds weighing approximately 1.80 to 2.00 carats, *inner circumference approximately 390mm*

R12 000–15 000



58



59



60

58

Diamond ring

in the form of a buckle, pavé-set with old-cut diamonds weighing approximately 3.50 carats, size H½

R16 000–18 000

59

Two silver and marcasite lizard brooches

realistically modelled, in sizes, length of the larger approximately 150mm (2)

R1 200–1 500

60

Three-strand garnet necklace

the garnet beads measuring approximately 4.90 to 5.30mm, to a black and gold plaited thread rope, with adjustable ball and tassel, length of garnet strands approximately 415mm

R4 000–6 000



61

61

Opal ring

the navette-shaped plaque centred by a collet-set oval-shaped opal flanked by smaller claw-set circular opals, the pierced frame set to bifurcated shoulders, *size M½*

R5 000–7 000



62

62

Two portrait miniatures, early 19th and 20th century

each oval, one painted with the portrait of a young boy, the other painted with the portrait of a young lady, each in eighteenth century attire, enclosed by a pierced frame set with white stones, *formerly buckles, later clasp and velvet band bracelet fittings, length approximately 165mm (2)*

R1 500–2 000



63

Continental silver, marcasite and enamel lorgnette

the engraved handle inlaid with blue enamel geometric motifs, with ring terminal, *two stones lacking*

R1 200–1 500



63

64

Pair of citrine drop earrings

the faceted teardrop-shaped citrines suspended from a ball and link chain, *post and butterfly fittings*, length approximately 36mm; and a heart-shaped pendant, the pierced frame set with rubies to the front and sapphires to the reverse, length approximately 20mm (3)

R2 000–3 000

65

Cameo brooch

oval, carved in relief with buildings in a landscape, collet-set to a gold frame with rope-twist border, *later pin*, width approximately 60mm

R3 000–4 000



66

Cameo pendant/brooch, 20th century

oval, carved with a profile of Pomona, to a gold frame with rope-twist border, with a hinged bale, width approximately 50mm

R1 500–2 000

67

Pearl necklace

the pearls measuring approximately 7.00 to 8.00mm, to a textured 14ct gold pearl-centred clasp, length approximately 835mm; another, the pearls measuring approximately 7.00 to 8.10mm, inner circumference approximately 920mm; and another, the pearls measuring approximately 7.00 to 7.30mm, inner circumference approximately 840mm (3)

R12 000–15 000





68

68

Pair of 18ct gold earrings

designed as stylised flowerheads, with filigree work, post and butterfly fittings (2)

R9 000–12 000

69

Single-stone diamond ring

claw-set to the centre with a round brilliant-cut diamond weighing 0.7500 carat, size N½

Accompanied by report number 160120049/203004 from EGL South Africa stating that the round brilliant-cut diamond weighing 0.7500 carat is E in colour and VS1 in clarity.

R30 000–32 000

70

Italian 18ct gold bracelet

composed of woven textured and plain links, length approximately 207mm

R20 000–25 000



69



70

71

71

9ct gold curb-link bracelet

length approximately 205mm

R7 000–9 000

72

Pearl, citrine and diamond ring

set to the centre with a pearl measuring approximately 7.50mm, the textured pierced 'foliate' band collet-set with thirteen citrines and old-cut diamonds, size F; and a similar brooch, width approximately 61mm (2)

R18 000–20 000



72





73

73

An 18ct gold pocket watch, Tavannes, 1920s

the enamel dial with arabic numerals, subsidiary seconds and steel hands, the outer case with engine-turned engravings and a vacant cartouche, the inner cover engraved 'TO F/LT MB. FREW DSO. MC. AFC. FROM 4 F.T.S.F.C., 1925'; retailer's metal cuvette, 15 jewel Cyma movement, later bale and glass, dial diameter approximately 38mm; with retailer's case for 'L Kramer & Co Egypte'

R7 000–8 000

74

Sapphire ring

collet-set with an oval-cut sapphire weighing approximately 0.40 carat, the reverse with the head of a panther, size O

R7 000–9 000



74

75

Topaz ring

set to the centre with an oval blue topaz weighing approximately 3.00 carats, size I½

R8 000–10 000

76

A 9ct gold bracelet, William James Dingley, Birmingham, 1922–1938

composed of six angling trophy medals from the Rowbank Angling Club, won by John Ritchie, connected by plain links, length approximately 215mm; a 9ct gold chain with two further medals, one 9ct gold, the other silver-gilt, length approximately 1480mm; a 9ct gold watch chain, length approximately 480mm; a 9ct bracelet, length approximately 200mm; two silver medals; and a silver brooch in the form of a fish, width approximately 42mm (7)

R20 000–22 000



75

77

Pair of multi-gem pendant earrings

collet-set, the synthetic sapphire suspending an emerald and ruby pendant terminating in a pear-shaped diamond weighing approximately 0.30 carat in total, post and butterfly fittings, length approximately 52mm (2)

R 10 000–12 000

78

Single-stone diamond ring

weighing 3.0630 carats, size P½

Accompanied by report number 160120050/203005 from EGL South Africa stating that the round brilliant-cut diamond weighing 3.0630 carats is K in colour and VS1 in clarity.

R160 000–180 000

76 part lot





78



79



80



79

18ct gold bracelet

designed as a series of open oval links united by reeded spacers, *length approximately 174mm*

R15 000–20 000

80

Single-stone diamond ring

claw-set with a round brilliant-cut diamond weighing 0.730 carat, to a reeded band, *size L½*

Accompanied report number 13031544 from DIA South Africa stating that the diamond weighing 0.730 carat is F in colour and I in clarity.

R12 000–15 000

81

9ct gold cigarette case, Asprey & Co, London, 1957

the reeded cylindrical body with channel-set sapphire thumbpiece, the interior cover engraved 'Noon', *width approximately 91mm*

R15 000–20 000

81





82

82

**Lady's 14ct gold cocktail watch,
Tourneau**

the rectangular dial with arabic numerals, diamond markers and lance hands, 17 jewel manual winding anchor movement, the spring-cover with foliate engraving, the articulated bracelet similarly engraved, *dial and movement signed, length approximately 180mm, dial width approximately 12mm*

R12 000–15 000

83

**Peruvian two-tone 18ct gold
pendant/brooch**

circular, pierced with the figure of the Incan creator deity, Viracocha, *width approximately 21mm*; an Italian 18ct gold charm of Pinocchio; an 18ct gold charm of a revolver; a 14ct gold charm of a mortarboard; a 9ct gold charm of St Paul's Cathedral, Georg Jensen Ltd, London, 1959; and a 9ct gold charm of a Beefeater, Slade & Kempton, London, 1961 (6)

R6 000–8 000

84

Single-stone diamond ring

claw-set to the centre with a vivid fancy yellow round brilliant-cut diamond weighing 2.0510 carats, *size R*

Accompanied by report number 160120358/203075 from EGL South Africa stating that the round brilliant-cut diamond weighing 2.0510 carats is Vivid Fancy Yellow in colour and SI1 in clarity

R125 000–130 000

85

Tiger's eye brooch, Erich Frey

of open abstract design, collet-set to the centre with a cabochon Tiger's eye, *width approximately 60mm*

R2 000–2 500



83



84



85



86

86

Diamond and gold dress ring

rectangular, collet-set with round brilliant-, eight- and old-cut diamonds weighing approximately 1.70 carats, against a pierced, textured foliate ground, *size F*

R15 000–20 000



87

87

Diamond, emerald and pearl dress ring

oval, collet-set with a round-cut diamond weighing approximately 0.90 to 0.95 carat, eight-cut diamonds, four emeralds and a pearl measuring approximately 5.50mm, to an abstract foliate textured ground, *size G*

R32 000–35 000



88

88

Emerald and diamond dress ring

collet-set with round emeralds weighing approximately 1.00 carat and round brilliant-cut diamonds weighing approximately 0.30 carat, to a pierced textured 'foliate' band, *size G*

R5 000–7 000

89

Single-stone diamond ring

claw- and collet-set with a round brilliant-cut diamond weighing approximately 0.60 to 0.65 carat, to a textured table and band, *size Q½*

R14 000–16 000



89

90

Diamond and gold dress ring

designed as a part-textured cube, three sides set with eight-cut diamonds, to a textured band, *size K*

R6 000–8 000



90



91

91

Gentleman's Christobal C steel watch, Longines, 1992, Ref 5253

the circular dial with red roman numerals, red inner minute track, traditional names of the Mediterranean winds in blue, blued steel compass hands and red 24 hour indicator hand with sunburst terminal, the hinged solar compass bezel engraved with degree markers, 21 jewel Eta movement 289, to a later brown leather strap with Breitling clasp, *engraved 5253 0586, length approximately 245mm, dial width approximately 28mm*; a presentation glass bottle blown with a model of the Santa Maria, with glass stopper, *height approximately 245mm*; and a wooden presentation stand (3)

This watch was released to commemorate the 500th anniversary of Christopher Columbus landing in the Americas.

R15 000–20 000



92

92

Gentleman's Oyster Perpetual Air King steel watch, Rolex, 1960s

the circular dial with arabic numerals, luminous dot hour markers and hands, blued steel second hand, black outer minute divisions, 25 jewel automatic movement, tonneau case with screw-down Oyster back and Rolex crown, Oyster-link bracelet with deployant Rolex clasp, the case with presentation inscription, *dial signed, dial width approximately 28mm*

R15 000–20 000



93

93

Gentleman's 18ct gold Omega Constellation wristwatch, 1960s

circular champagne dial, applied gilt baton hour markers, black outer minute markers, polished gilt lance hands, date aperture at 3 o'clock, the case with screw-down back, 24 jewel, automatic movement adjusted to 5 positions and temperature, with later Omega leather strap and plated buckle, *case, dial and movement signed, dial diameter approximately 31mm*; and an 18ct gold bracelet strap (2)

R35 000–40 000



94

94

Gentleman's Portugieser steel watch, IWC, 2009, Ref 5001

the circular black dial with applied arabic numerals, day, date and second subsidiary dials, date aperture at 6 o'clock, 42 jewel cal.50010 damascened automatic nickel lever movement, mono-metallic compensation balance adjusted to 5 positions, screw-down sapphire crystal display back, the down-turned lugs to a black alligator strap and IWC folding buckle, *case and movement signed 3467636, dial diameter approximately 28mm*, with presentation case, watch cloth, guarantee card dated 1.11.09, certificate and instructions manual

R60 000–80 000



95



96



97



98

95

A 22ct gold 'handbag' vinaigrette, 19th century

the shaped body engraved throughout with a wave pattern, the front with an applied gold band beneath a collet-set emerald and engraved 'lock', with collet-set diamond thumbpiece and later rope handle, the interior with a hinged pierced foliate and floral grille, 10,5g, 3,1cm wide

R9 000–12 000

96

A George IV silver-gilt vinaigrette, probably Ledsam & Vale, Birmingham, 1820

in the form of a handbag, the body with an abstract leaf motif against a stippled ground, with link chain, the rectangular hinged cover with a floral design and fruiting vine border, the gilt interior with hinged, pierced and foliate grille, 7,9g, 2cm high; and a Victorian brass novelty pendant/locket, in the form of a trunk with foliate engraved body, the hinged cover enclosing four oval compartments, 2,5cm wide (2)

R8 000–10 000

97

A George V 9ct gold vesta case, Henry Matthews, Birmingham, 1911

the front with a vacant cartouche enclosed by shamrocks, ring attachment to the side, 3,7cm high

R2 000–2 500

98

A mother-of-pearl, lapis lazuli gilt and gold paper knife, retailed by Hancock, 39 Bruton Street, 1851–1869

the waisted mother-of-pearl blade with foliate gold mounts, to a lapis lazuli handle, minor loss to the blade, minor loss to one leaf of the mount, 23,5cm long; cased

R15 000–20 000

99

A Victorian double-ended glass and gilt metal-mounted scent bottle, Hunt & Roskell, late Storr & Mortimer, 155 New Bond Street

with faceted sides, the inner hinged cover engraved 'Hunt & Roskell', lacking stoppers, 12cm long; cased

R1 500–2 000



99

100

An Irish Old English pattern silver basting spoon, Michael Homer, Dublin, 1777

with engraved stem, the terminal with a crest, 100g; and another, maker's mark worn, Dublin, 1799, the bright-cut engraved stem headed by a cartouche enclosing the initials 'H W. H. E.' beneath a six-pointed star, 110g (2)

R5 000–6 000

101

A George III silver swing-handled cake basket, Robert Hennell I, London, 1792

oval, raised on a conforming foot, with reeded rims, pales and bright-cut engraved and stipple borders, the centre engraved with an armorial, reeded swing-handle, 885g, 37cm long

R15 000–20 000

102

A George III silver hot water pot, John Edwards III, London, 1805

the tapering bulbous body engraved with an armorial and raised on a moulded shallow footrim, the domed cover with button-shaped finial, with undulating lip, T-shaped thumbpiece and bamboo-bound handle, footrim with repairs, dent to the thumbpiece, 805g, 21cm high

R8 000–10 000



100



101



102

103

A George III silver nutmeg grater, Joseph Willmore, Birmingham, 1806

rounded rectangular, with hinged steel rasp, *oxidisation to the interior*, 16g, 3,5cm wide



103

R6 000–8 000

104

A George III silver snuff box, John Shaw, Birmingham, 1809

the reeded oblong body with thumbpiece and hinged cover, gilt interior, 60g, 8cm wide



104

R5 000–7 000

105

A George III silver snuff box, John Shaw, Birmingham, 1812

rectangular, the cover and reverse engraved with a basket-weave design, the cover engraved 'RJ' within a rectangular reserve, with thumbpiece and gilt interior, *gilding with wear*, 50g, 5,6cm wide



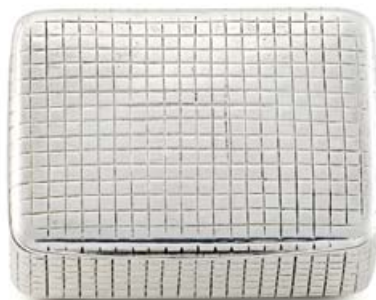
105

R4 000–6 000

106

A George IV silver snuff box, Joseph Willmore, Birmingham, 1825

rectangular, with engine-turned body, the hinged cover with foliate border enclosing a reserve with a bright-cut engraved flower, gilt interior, 80g, 6,6cm wide



106

R5 000–7 000

107

A George IV silver snuff box, Mary Ann & Charles Reilly, London, 1826

rectangular, engraved throughout with a grid pattern, with thumbpiece and gilt interior, 65g, 5,7cm wide

R5 000–7 000



106



108

108

A George IV silver snuff box, probably John Linnit, London, 1827

rectangular, with engine-turned cover and base and reeded sides, with foliate thumbpiece, the gilt interior with the inscription 'A small token of Regard to Charles Long Esq. from Mr. Thomas Park, October 1828', 65g, 6,8cm wide

R5 000–7 000

109

**A William IV silver snuff box,
Francis Clark, Birmingham,
1836**

rectangular, with engine-turned hinged cover and base, the cover with a vacant reserve, with floral thumbpiece and gilt interior, 40g, 5.4cm wide

R4 000–6 000



109

110

**A Victorian silver snuff box,
Joseph Willmore, Birmingham,
1840, of Masonic interest**

rectangular, the hinged cover with presentation inscription 'PRESENTED TO brother James Hargreaves p.m. PROV. GRAND SECRETARY OF W. YORKSHIRE; by the Brethren of the Alfred Lodge number 384 Leeds, as a token of their Respect & Esteem for his unwearied zeal in the cause of Freemasonry and his fervent zeal for the good of the Craft A.L. 5840. A.D. 1840' enclosed by Masonic symbols and a foliate rim, the bombé sides with flowers and c-scrolls against a stippled ground, the engine-turned base with vacant rectangular cartouche, gilt interior, 240g, 9.5cm wide

R10 000–12 000



111

111

**A Victorian silver snuff box,
Francis Clark, Birmingham,
1845**

rectangular, the hinged cover later engraved 'PRESENTED TO GEORGE BOYD ESQR by the 20th R.R.V. 1863', within an applied foliate border, foliate rims and engine-turned sides, the base later engraved with an amorous couple, gilt interior, 155g, 8cm wide

R8 000–10 000



113

112

**A Victorian silver snuff box,
George Unite, Birmingham, 1878**

rectangular, with engine-turned body and foliate rims, the hinged cover engraved 'PRESENTED TO JR Jones The best Swordsman in the CAP: J.M. DUGDALE'S TROOP OF THE M.Y. CAVALRY. 1879', 110g, 7.2cm wide

R6 000–8 000



110

112

113

**A Victorian silver snuff box, Hilliard
& Thomason, Birmingham, 1888**

shaped rectangular, the hinged cover with a vacant cartouche enclosed by bright-cut engraved foliage and wrigglework borders, with snake-shaped thumbpiece, the sides with wrigglework and zig-zag borders, the base bright-cut engraved with a panel of flowers, gilt interior, gilding worn, 45g, 5.5cm wide

R4 000–6 000



Various properties

***114**

An assembled George IV three-piece silver tea set, Thomas & George Hayter, London, 1826

the teapot with a part gadrooned body engraved 'REO', raised on four paw and anthemion feet, with shell, acanthus-leaf and gadrooned rims, the reeded leaf-capped and shell handle with ivory fillets, the hinged cover with petal-form finial, 880g, 14cm high; the two-handed sugar bowl and milk jug similarly decorated, raised on rose-headed paw feet, with acorn, acanthus and scroll handles, gilt interiors, 800g all in, the sugar bowl 21cm wide over handles (3)

**Please note that this lot is not suitable for export.*

R9 000–12 000

115

A pair of William IV silver salts, William Bateman II, London, 1832

each trumpet-shaped flowerhead raised on a leafy stem, 245g all in, 5,8cm high (2)

R4 000–6 000

116

An early Victorian silver sugar basket, Charles Reilly & George Storer, London, 1839

the pierced frame applied with a fruiting vine, the pierced swing-handle with flowerheads, raised on a spreading stepped domed foot with reeded rim and engraved border, 345g, 17,4cm high, 14,2cm diameter; later blue glass liner

R6 000–8 000



114



115



116

117

A Victorian silver milk jug, Benjamin Smith III, London, 1841

the lobed body engraved with a crest, raised on a conforming foot, the rim with c-scroll and foliate border, with leaf-capped handle, the hinged cover with flowerhead finial, the base engraved 'B.SMITH DUKE ST LINN INN FIELDS', 335g, 19,2cm high

R6 000–8 000



117



118



120



119



121

118

A pair of Victorian silver candlesticks, Henry Wilkinson & Co, Sheffield, 1843

each baluster fluted column moulded with swags of flowers and acanthus leaves, to a lobed base similarly moulded and engraved with a crest, with conforming sconce and detachable drip-pan, *one sconce apparently unmarked, loaded, 28,5cm high (2)*

R12 000–15 000

119

A Sheffield-plate platter, 19th century

oval, with shaped gadrooned border, 46cm wide

R3 500–4 500

120

A pair of silver-plate wine coasters, late 19th century

each moulded with leaf-and-berry swags united by lion masks between pale borders, the rim with a reeded and foliate border, turned wooden base, *10,5cm high (2)*

R5 000–7 000

***121**

A Victorian silver teapot, R & S Garrard & Co, London, 1862, retailed by Garrard's, Panton Street, London

the fluted bulbous body with alternating cell diaper and strapwork panels, the conforming hinged cover surmounted by a seated Oriental gentleman, with ivory leaf-capped handle, raised on a shaped circular foot, *670g, 16cm high*

**Please note that this lot is not suitable for export.*

R7 000–9 000

122

A pair of Victorian silver candlesticks, John Watson & Son, Sheffield, 1883

the knopped tapering cylindrical column to a shaped base, the rims moulded with c-scrolls, shells and acanthus leaves, with spool-shaped sconces and detachable drip-pans, *the sconces with dents, loaded*, 29cm high (2)

R15 000–20 000



122

123

A Victorian silver sauce boat, George Nathan and Ridley Hayes, Birmingham, 1895

with wavy rim and leaf-capped double scroll handle, raised on leaf-headed scroll and shell feet, 375g, 11cm high

R2 000–3 000



123

124

A Victorian silver rosebowl-on-stand, Atkin Brothers, Sheffield, 1900

circular, moulded in relief with summer flowers, reeded rims, raised on a pierced foliate stand with reeded rim, on fluted outcurved legs with pad feet, 710g all in, 19cm high (2)

R5 000–7 000



124

125

An Edward VII silver rosebowl, William Comyns & Sons, London, 1903

octofoil, the lobed body with alternating plain and moulded floral and fruit curved bands, raised on a domed circular foot, 625g, 20cm wide

R7 000–9 000



125

126

A pair of silver-plate coasters, late 19th/early 20th century

each cylindrical pierced body moulded with leaf-and-berry swags united by lion masks, the everted rim with flower and scroll border, raised on four fluted legs with paw feet united by a shaped stretcher centred by a rosette, one with blue glass liner, the other with *later* plastic liner, 16cm high (2)

R6 000–8 000



126

127

A pair of Edward VII silver candlesticks, Williams (Birmingham) Ltd, Birmingham, 1904

of rococo design, each baluster, profusely moulded with c-scrolls, flowerheads and foliage, with detachable drip-pans, loaded, 29cm high (2)

R18 000–24 000



127

128

A pair of Edward VII silver bon bon dishes, Skinner & Co, London, 1906

the hammered oval bowls raised on four brackets, to a conforming domed base centred by a finial, 525g all in, 12cm high (2)

R10 000–12 000



128

129

An Edward VII silver salver, Hawksworth, Eyre & Co Ltd, London, 1910

circular, with pie-crust border, raised on three scroll and pad feet, 1670g, 41cm diameter

R10 000–12 000



129

130

**A cased set of George V
Aynsley coffee cans and
saucers, with silver mounts,
F H Adams Ltd, Birmingham,
1913**

the six coffee cans and six saucers with wavy gilt rims, with green, yellow, black and swag borders, *the cans 6,8cm high, the saucers 12cm diameter*; each silver mount moulded with a vacant cartouche flanked by pierced floral latticework panels, with harp-shaped handle, to a spreading circular foot, *185g all in, the case with distress* (18)

R6 000–8 000

131

**A George V silver trophy
bowl, William Neale & Son Ltd,
Birmingham, 1930**

the bulbous body raised on a spreading circular foot, the sides applied with lion-mask and ring handles, the rim with ovolo and reeded border, *2225g, 20cm high*; and an ebonised trophy stand, J.W. Cassidy & Son, Worcester, *20cm high* (2)

R9 000–12 000

132

**A George V silver two-
handled rosebowl, Wakely &
Wheeler, London, 1934**

circular, raised on a conforming foot, the rim and base with Celtic dragon and boss borders, the sides applied with a pair of conforming dragon-headed handles, *975g, 12,7cm high, 30cm wide over handles*

R6 000–8 000



130



131



132



detail



133

**A George II style carved
walnut-veneered and parcel-
gilt mirror, 19th century**

the *later* bevelled plate enclosed by a
carved gilt slip, the sides with leaf-and-
berry borders, the top with swan-neck
cresting with foliate mouldings centred
by a bird with outspread wings perched
on a sphere, the shaped apron with
conforming foliate carved borders,
restorations, 142,5cm high, 67cm wide

R60 000–80 000



134

134

**An oak low dresser base,
18th century and later**

the rectangular top above three mitred
drawers, on square-section legs, 76cm
high, 205cm long, 55,5cm wide

R15 000–20 000

135

**An oak settle, 18th/19th
century**

with four-panelled plank back, hessian
and string seat with squab cushion,
downswept arm supports, on cabriole
legs and pad feet, 180,5cm long

R10 000–12 000

PROVENANCE

Sold: Strauss & Co, October 2011, Lot 65

135



136

An oak bench, 18th century and later

the rectangular three-panelled back carved with a frieze, the solid seat with hinged compartment above a panelled frieze, on stile feet, *some damage and loss, 132cm wide*

R5 000–7 000



136

137

A Regency mahogany and inlaid music stand

the adjustable ratchet sheet holder with gallery, above a ring-turned column with adjustable brass support, on three outswept legs united by a triform platform stretcher, with ball feet, *restorations, 125cm high, 41cm wide*

R6 000–8 000



137

138

A William IV rosewood sofa table

the rectangular twin-flap top with gadrooned border above a frieze drawer, on a tapering column with quadripartite base, paw feet and castors, *71cm high, 148cm wide open, 86cm deep,*

R15 000–20 000

139

A William IV rosewood card table

the hinged rectangular top with rounded corners enclosing a baize-lined playing surface, on a tapering column with carved lotus socle, quadripartite base, on leaf-carved feet with brass castors, *72,5cm high, 91,5cm wide, 44,5cm deep*

R7 000–9 000

140

A late Regency mahogany extending dining table

the moulded rectangular top on ring-turned reeded legs with brass cappings and castors, with four leaves, *additions and restorations, 73cm high, 152,5cm deep, 418cm long fully extended*

R60 000–80 000





141

141

A pair of Victorian mahogany armchairs

each with curved top-rail above a plain mid-rail, downcurved arms, caned seat, on turned and ring-turned legs (2)

R7 000–9 000

142

A Victorian walnut and walnut-veneered pedestal desk

the rectangular top inset with a gilt-tooled brown leather writing surface above three frieze drawers, each pedestal with three graduated drawers on a plinth base, on wooden castors, 78,5cm high, 137,5cm wide, 75cm deep

R12 000–15 000



142



143

143
A bronze equestrian model of Grand National winner Kellsboro' Jack, E M Alexander, 1933

ridden by his jockey, Dudley Williams, on a rectangular mottled green marble base, *signed and dated 'E M ALEXANDER 1933'; inscribed 'No 1 G.D.N.L 1933'; 34cm high including base*

R20 000–30 000

144
A Victorian mahogany butler's tray

rectangular, the gallery incorporating the handles, *9,5cm high, 68cm wide, 56,5cm deep, on a later X-shaped folding stand, 88,5cm high (2)*

R5 000–7 000

145
A Victorian mahogany brass-mounted campaign chest

of small proportions, the rectangular top above a pair of short and two long drawers, the sides with brass carrying-handles, *on later bracket feet, 75cm high, 91,5cm wide, 30,5cm deep*

R15 000–20 000



144



145



146

146

**A Belleek basket, 1964–1965,
model number 588**

oval, the two-handed laticework basket applied with roses, thistles and clovers, with four-strand base, *impressed applied double ribbon mark, repaired, 32cm wide over handles*; with original correspondence between the former owner and PB Stephens & Co Ltd, Ireland

R5 000–6 000

147

**A Victorian mahogany
pedestal desk**

the rectangular top inset with a gilt-tooled brown leather writing surface above three frieze drawers, each pedestal with three graduated drawers, plinth base on brass and black-painted castors, *77,5cm high, 119,5cm wide, 69cm deep*

R12 000–15 000

147



148

A Victorian rosewood two-tiered trolley, Howard & Sons, 25, 26, 27 Berners Street, London W, 1872-1899

each rectangular tier with turned open gallery united by spindles, on turned legs with brass castors, with manufacturer's label, *64,5cm high, 78cm wide, 44cm deep*

R12 000-15 000

149

A Victorian mahogany pedestal desk

the rectangular top inset with a red leather writing surface above three frieze drawers, each pedestal with three graduated drawers on a plinth base with porcelain castors, *78cm high, 137cm wide, 69cm deep*

R12 000-15 000

148



149



150

A Victorian yew, ash and elm Windsor armchair

with outscrolled arm supports and solid seat, on ring-turned legs joined by turned stretchers

R3 000–4 000

151

A near pair of Victorian yew, ash and elm Windsor armchairs

each with outscrolled arms and saddle seat, on ring-turned baluster legs joined by turned stretchers, *one stretcher replaced* (2)

R6 000–8 000

152

An Elizabethan style oak and teak trestle dining table, modern

the four-plank top above a pair of ring-turned double lobed and baluster-turned supports, each on a shaped platform base, *74cm high, 300,5cm long, 92cm deep*

R15 000–20 000

153-160 No Lots



150



151



152