

The Wanderers Club, Illovo, Johannesburg  
9 November 2015 – 4 pm

## Fine South African and International Art

Day Sale  
Lots 1–200

OPPOSITE  
Lot 100 Paul du Toit, *Landskap, Noordhoek* (detail)

1

Jacob Hendrik  
**PIERNEEF**

SOUTH AFRICAN 1886–1957

*Mombasa*

signed, dated 1926 and inscribed with  
the title  
watercolour over pencil  
25 by 34 cm

**R35 000 – 45 000**



1

2

Walter Whall  
**BATISS**

SOUTH AFRICAN 1906–1982

*Sydney*

signed, dated 11 April 76 and inscribed  
with the title  
watercolour  
30,5 by 44,5 cm

**R30 000 – 50 000**



2

3

Gregoire Johannes  
**BOONZAIER**

SOUTH AFRICAN 1909–2005

*Volkshuisies en Akkerbome*

signed and dated 1974  
ink, charcoal and watercolour  
33 by 47,5 cm

**R18 000 – 24 000**



3

4

Maud Frances Eyston  
**SUMNER**

SOUTH AFRICAN 1902–1985

*Snowscene near Chamonix*

signed; inscribed with the artist's name  
and title on a label adhered to the  
reverse  
pen, ink and watercolour  
46,5 by 60,5 cm

**R20 000 – 30 000**

EXHIBITED

Pretoria Art Museum, Pretoria, *Prestige  
Comprehensive Exhibition, 1977–8*



4

5

Gregoire Johannes  
**BOONZAIER**

SOUTH AFRICAN 1909–2005

*Canterbury Street, District Six,  
C. Town*

signed and dated 1969; signed and  
inscribed with the title on the reverse  
chalk pastel  
36,5 by 55,5 cm

**R20 000 – 30 000**



5

6

Gregoire Johannes  
**BOONZAIER**

SOUTH AFRICAN 1909–2005

*Figures and Rondawels*

signed and dated 1940

oil on canvas

35 by 45 cm

**R60 000 – 90 000**



6

7

Terence John  
**MCCAWE**

SOUTH AFRICAN 1913–1978

*Basotho Village with Distant Mountains*

signed and dated '58

oil on canvas

39,5 by 49,5 cm

**R40 000 – 60 000**



7

8

François  
KRIGE

SOUTH AFRICAN 1913–1994

*Homestead*

signed and dated 1949 on the reverse  
oil on board  
24 by 29 cm

**R40 000 – 60 000**

9

Gregoire Johannes  
BOONZAIER

SOUTH AFRICAN 1909–2005

*Rural Cottages*

signed and dated 1963  
oil on canvas laid down on board  
25 by 49,5 cm

**R30 000 – 50 000**



8



9

10

Tinus (Marthinus Johannes)

DE JONGH

SOUTH AFRICAN 1885–1942

*Valley Farmhouse*

signed

oil on canvas laid down on board  
47 by 62 cm

**R30 000 – 50 000**

11

Tinus (Marthinus Johannes)

DE JONGH

SOUTH AFRICAN 1885–1942

*Mountainous Landscape*

signed

oil on canvas  
32 by 47 cm

**R30 000 – 50 000**

10



11



12



12

Tinus (Marthinus Johannes)

DE JONGH

SOUTH AFRICAN 1885–1942

*Twelve Apostles from Camps Bay*

signed

oil on canvas

62,5 by 100,5 cm

**R60 000 – 80 000**



13

Sydney  
CARTER

SOUTH AFRICAN 1874–1945

*Crossing the Bridge*

signed

oil on canvas

64 by 91,5 cm

**R30 000 – 50 000**

14

Nita (Pauline Augusta Wilhelmina)

SPILHAUS

SOUTH AFRICAN 1878–1967

*Shaded Farmyard*

signed with the artist's monogram

oil on canvas board

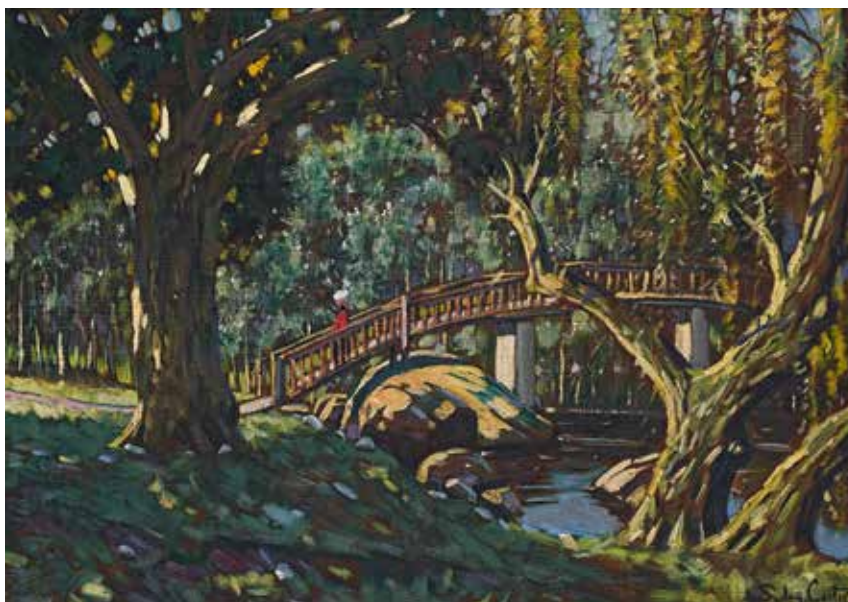
31 by 39,5 cm

**R40 000 – 60 000**

PROVENANCE

The Pieter Wenning Gallery, Johannesburg

13



14





15

15

Bertha Amy  
EVERARD

SOUTH AFRICAN 1873–1965

*Gum Trees, Bonnefoi*

authenticated by Leonora Everard-Haden, the artist's  
granddaughter, on the reverse

oil on panel

34 by 25 cm

**R30 000 – 50 000**

PROVENANCE

Everard Read Gallery, Johannesburg



16

16

Willem Hendrik Adriaan  
BOSHOFF

SOUTH AFRICAN 1951–

*Girl in White Dress*

signed

oil on canvas laid down on board

29,5 by 18,5 cm

**R20 000 – 30 000**



17

17

John Henry  
AMSHWITZ

SOUTH AFRICAN 1882–1942

*The Landing of Jan van Riebeeck*

signed; signed, dated 1941, inscribed  
with the title, 'Muizenberg' and  
'designed for proposed mural for  
General Post Office, Cape Town' on the  
reverse

oil on board

51 by 32 cm

**R30 000 – 40 000**



18

18

John Henry  
AMSHWITZ

SOUTH AFRICAN 1882–1942

*The Landing of Da Gama and the Portuguese  
Explorers*

signed

oil on canvas

43 by 55,5 cm

**R18 000 – 30 000**



19

19

John Henry  
AMSHEWITZ

SOUTH AFRICAN 1882–1942

*Four-in-Hand*

signed; signed and inscribed with the title and 'A journey of a pilgrim' on a label adhered to the reverse

oil on panel

53,5 by 42 cm

**R10 000 – 15 000**

Accompanied by a signed certificate of authenticity, Pieter Wenning Gallery, 27 June 1968, adhered to the reverse



20

20

Jean-Baptiste  
VALADIÉ

FRENCH 1933–

*Le Fauteil Rouge*

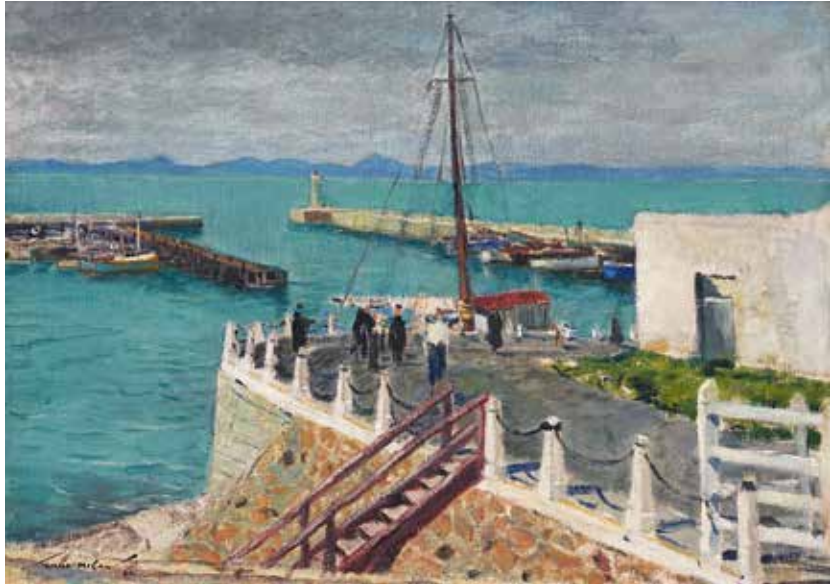
signed and dated 67; signed, dated 67 and inscribed with the title on the reverse

oil on canvas

71,5 by 53 cm

**R7 000 – 10 000**

Accompanied by a signed certificate of authenticity adhered to the reverse.



21

21

Terence John  
MCCAWE

SOUTH AFRICAN 1913–1978

*Simon's Town*

signed and dated 42

oil on canvas

52,5 by 75 cm

**R60 000 – 80 000**

22

Terence John  
MCCAWE

SOUTH AFRICAN 1913–1978

*Figures and Boats on a Beach*

signed and indistinctly dated '45

oil on canvas

49,5 by 59,5 cm

**R30 000 – 50 000**



22



23

---

23

Cathcart William

**METHVEN**

SOUTH AFRICAN 1849–1925

*Cape of Good Hope from the Sea*

signed and dated 1906; printed with the artist's name, title,  
medium and dated 1906 on a label adhered to the reverse  
oil on canvas

69,5 by 105 cm

**R50 000 – 80 000**



24

24

Errol Stephen  
**BOYLEY**

SOUTH AFRICAN 1918–2007

*Evening Clouds*

signed

oil on canvas board

39 by 50 cm

**R25 000 – 35 000**



25

25

Errol Stephen  
**BOYLEY**

SOUTH AFRICAN 1918–2007

*Farm Road After a Storm*

signed

oil on canvas

101 by 75 cm

**R40 000 – 60 000**

26

Errol Stephen  
**BOYLEY**

SOUTH AFRICAN 1918–2007

*Extensive Landscape*

signed

oil on canvas

76 by 101 cm

**R40 000 – 60 000**



26

27

Piet (Pieter Gerhardus)  
**VAN HEERDEN**

SOUTH AFRICAN 1917–1991

*Namaqualand*

signed

oil on canvas laid down on board  
45 by 60 cm

**R50 000 – 70 000**

28

David Johannes  
**BOTHA**

SOUTH AFRICAN 1921–1995

*Paarl Vineyards*

authenticated by Jane Botha, the  
artist's wife, on the reverse

oil on board  
30 by 50,5 cm

**R30 000 – 40 000**

29

Piet (Pieter Gerhardus)  
**VAN HEERDEN**

SOUTH AFRICAN 1917–1991

*Verdant Landscape*

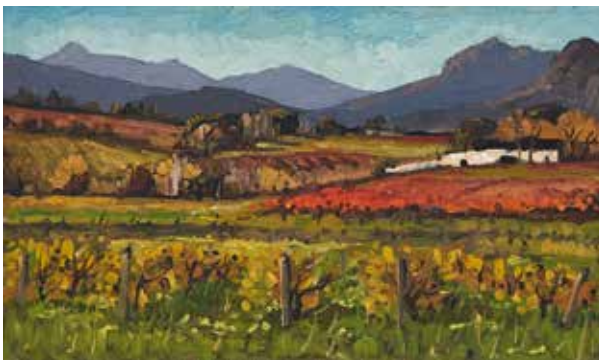
signed and dated '78

oil on canvas laid down on board  
23,5 by 34 cm

**R18 000 – 24 000**



27



28



29





30

30

Tinus (Marthinus Johannes)

**DE JONGH**

SOUTH AFRICAN 1885–1942

*A Resort, Mountains Beyond*

signed

watercolour on card

20,5 by 29 cm

**R12 000 – 16 000**

31

Ruth

**EVERARD-HADEN**

SOUTH AFRICAN 1904–1992

*Tall Trees, New Forest*

inscribed with the artist's name and title  
in another hand on the reverse

oil on canvas

80 by 65 cm

**R40 000 – 60 000**



31



32

32

Piet (Pieter Gerhardus)

**VAN HEERDEN**

SOUTH AFRICAN 1917–1991

*Landscape near Riebeeck-Kasteel*

signed; inscribed with the title on the reverse

oil on canvas laid down board  
20,5 by 45 cm

**R30 000 – 40 000**

33

Piet (Pieter Gerhardus)

**VAN HEERDEN**

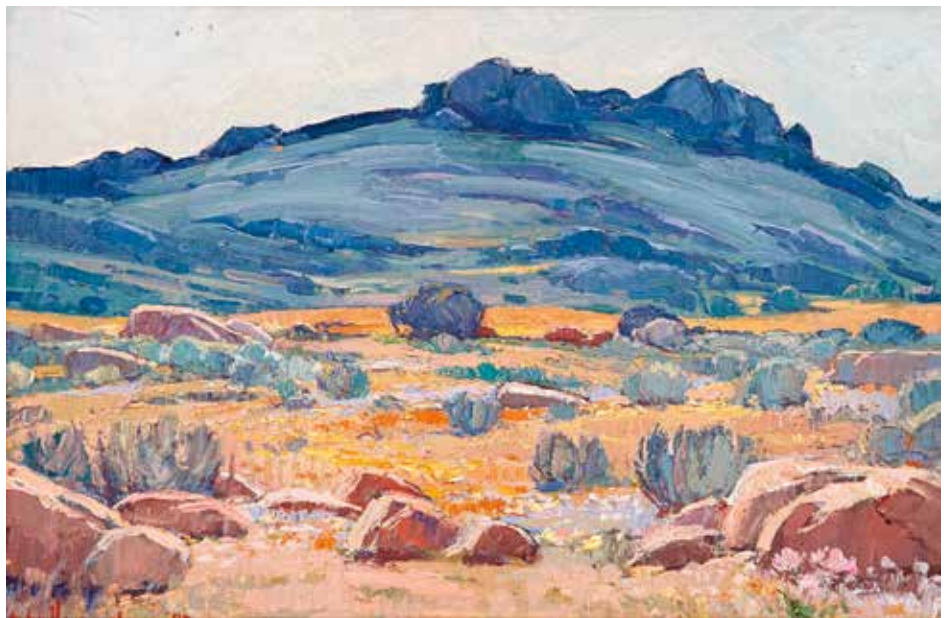
SOUTH AFRICAN 1917–1991

*Namaqualand in Spring*

signed and dated '82

oil on board  
28,5 by 43,5 cm

**R20 000 – 30 000**



33



34

34

Maurice Charles Louis  
VAN ESSCHE

SOUTH AFRICAN 1906–1977

*View of a Hilltop Town*

signed

oil on panel

26 by 46,5 cm

**R30 000 – 50 000**

35

David Johannes  
Botha

SOUTH AFRICAN 1921–1995

*Houses, Paarl*

signed and dated 60

oil on canvas laid down on board

36,5 by 49,5 cm

**R35 000 – 50 000**



35



36

36

Errol Stephen  
BOYLEY

SOUTH AFRICAN 1918–2007

*Farm Buildings*

signed  
oil on canvas  
47 by 60 cm

**R35 000 – 50 000**

37

Piet (Pieter Gerhardus)  
VAN HEERDEN

SOUTH AFRICAN 1917–1991

*Street Scene After the Rain*

signed and dated '52  
oil on canvas  
49 by 60 cm

**R40 000 – 60 000**



37

38

Eugene

**LABUSCHAGNE**

SOUTH AFRICAN 1921–1990

*Onions*

signed and dated 48

oil on board

23 by 29,5 cm

**R15 000 – 20 000**



38

39

Adriaan Hendrik

**BOSHOFF**

SOUTH AFRICAN 1935–2007

*Still Life with Daisies*

signed

oil on canvas laid down on board

59 by 83 cm

**R50 000 – 70 000**



39

40

Willem Hermanus  
COETZER

SOUTH AFRICAN 1900–1983

*Proteas in an Ornate Vase*

signed and dated 59  
oil on canvas laid down on board  
49,5 by 62,5 cm

R25 000 – 40 000



40

41

Cecily  
SASH

SOUTH AFRICAN 1924–

*Pink Rose*

signed and dated '47  
oil on canvas  
34,5 by 24 cm

R15 000 – 20 000



41

42

Otto  
KLAR

SOUTH AFRICAN 1908–1994

*Still Life with Berries*

signed  
oil on board  
72,5 by 29 cm

R15 000 – 20 000



42



43

43

Otto

KLAR

SOUTH AFRICAN 1908–1994

*Yellow Rose*

signed

oil on board

55 by 72 cm

**R20 000 – 30 000**

44

Otto

KLAR

SOUTH AFRICAN 1908–1994

*Still Life with Roses*

signed

oil on board

35 by 44 cm

**R15 000 – 20 000**



44



45

45

Otto  
KLAR

SOUTH AFRICAN 1908–1994

*Magnolias*

signed  
oil on board  
44 by 59 cm

**R18 000 – 24 000**

46

Louis van  
HEERDEN

SOUTH AFRICAN 1941–

*Gift for Josephine*

signed and dated 1995 on the reverse  
oil on canvas  
150 by 120 cm

**R25 000 – 40 000**



46



47

Willem Hermanus  
**COETZER**

SOUTH AFRICAN 1900–1983

*Sentinel, Mt Aux Sources from  
Tugela Gorge*

signed; signed and inscribed with the  
title on the reverse  
oil on canvas laid down on board  
45 by 60 cm

**R30 000 – 50 000**

48

Willem Hermanus  
**COETZER**

SOUTH AFRICAN 1900–1983

*Mont Aux Sources*

signed; signed and inscribed with the  
title on the reverse  
oil on canvas laid down on board  
45 by 60,5 cm

**R40 000 – 60 000**

47



48



49



49

Piet (Pieter Gerhardus)  
**VAN HEERDEN**

SOUTH AFRICAN 1917–1991

*Quiver Tree*

signed

oil on canvas laid down on board  
18,5 by 49,5 cm

**R18 000 – 24 000**

50

Piet (Pieter Gerhardus)  
**VAN HEERDEN**

SOUTH AFRICAN 1917–1991

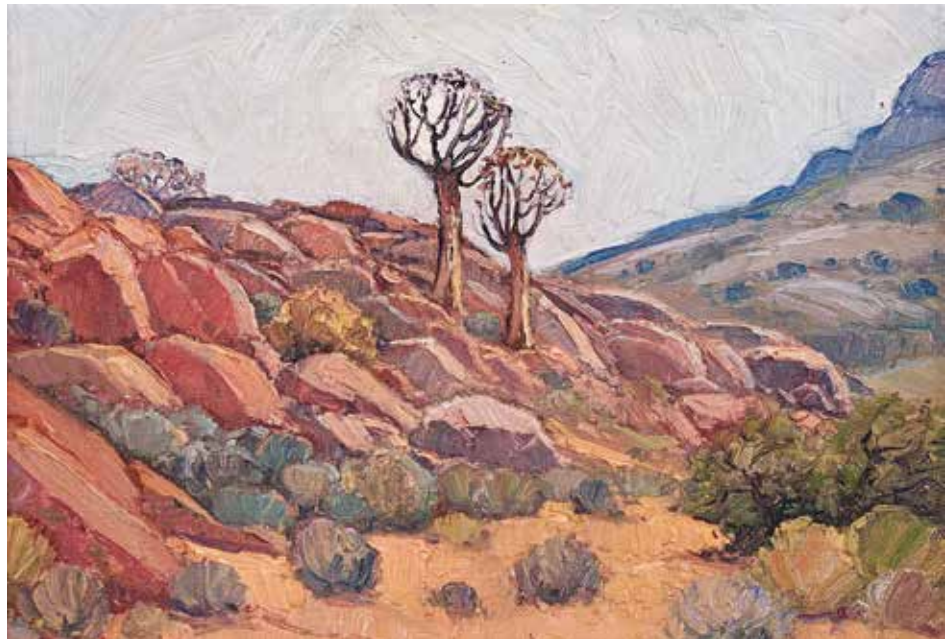
*Trees on a Rocky Outcrop*

signed and dated '78

oil on canvas laid down on board  
23,5 by 34 cm

**R18 000 – 24 000**

50



51

Conrad Nagel Doman  
**THEYS**

SOUTH AFRICAN 1940–

*Shacks with Deformed Bluegum*  
signed and dated 2007; signed, dated  
2007 and inscribed with the title on  
the reverse  
oil on canvas  
37,5 by 45 cm

**R60 000 – 90 000**

52

François  
**KRIGE**

SOUTH AFRICAN 1913–1994

*Mother and Child*  
signed and dated 66  
oil on board  
50 by 60 cm

**R60 000 – 80 000**

51



52



53

Errol Stephen  
**BOYLEY**

SOUTH AFRICAN 1918–2007

*Riverside Cottage*

signed

oil on canvas laid down on board

55 by 75,5 cm

**R30 000 – 40 000**

54

Eben

**VAN DER MERWE**

SOUTH AFRICAN 1932–

*Near Golden Gate*

signed and dated '97; signed, dated 1997,

inscribed with the title and medium on

the reverse

oil on board

59 by 90 cm

**R18 000 – 24 000**

53



54





55

55

Errol Stephen  
BOYLEY

SOUTH AFRICAN 1918–2007

*Street Scene*

signed  
oil on canvas  
65 by 90,5 cm

**R30 000 – 50 000**

56

Errol Stephen  
BOYLEY

SOUTH AFRICAN 1918–2007

*Shaded Avenue*

signed  
oil on canvas  
65 by 90,5 cm

**R30 000 – 50 000**



56



57

57

Titta

FASCIOTTI

SOUTH AFRICAN 1927–1993

*Woodlands*

signed and indistinctly dated 81

oil on canvas

59 by 88,5 cm

**R30 000 – 50 000**

58

Errol Stephen

BOYLEY

SOUTH AFRICAN 1918–2007

*Vineyard*

signed

oil on canvas

75 by 145 cm

**R30 000 – 50 000**



58

59

Gregoire Johannes  
**BOONZAIER**

SOUTH AFRICAN 1909–2005

*Street Scene with Street Lamp*

signed and dated 1988  
oil on board  
44,5 by 34 cm

**R60 000 – 90 000**

60

Conrad Nagel Doman  
**THEYS**

SOUTH AFRICAN 1940–

*Farm Cottages W. Cape*

signed and dated 2003; signed, dated 2003  
and inscribed with the title on the reverse  
chalk pastel  
32 by 43 cm

**R30 000 – 50 000**

59



60



61

Gregoire Johannes

**BOONZAIER**

SOUTH AFRICAN 1909–2005

*Approaching Storm, Kenilworth, C.P.*

signed and dated 1965; signed, inscribed

with the title and 'no 18' on the reverse

oil on canvas

39 by 47,5 cm

**R60 000 – 80 000**

62

Alfred Friedrich Franz

**KRENZ**

SOUTH AFRICAN 1899–1980

*Near Eemnes, 't Gooi, the  
Netherlands*

signed and dated 42; inscribed with the

title in another hand on the reverse

oil on canvas laid down on board

48,5 by 63 cm

**R30 000 – 50 000**



61



62





63

63

Willem Hermanus  
**COETZER**

SOUTH AFRICAN 1900–1983

*Near Southbroom*

signed and dated 59; signed and  
inscribed with the title on the reverse  
oil on canvas laid down on board  
31,5 by 41,5 cm

**R18 000 – 24 000**

64

Errol Stephen  
**BOYLEY**

SOUTH AFRICAN 1918–2007

*Boats on the Shore*

signed  
oil on canvas board  
34,5 by 44 cm

**R20 000 – 30 000**



64



65

65

Errol Stephen  
**BOYLEY**

SOUTH AFRICAN 1918–2007

*Doorway*

signed  
oil on board  
39,5 by 29,5 cm

**R15 000 – 20 000**



66

66

Errol Stephen  
**BOYLEY**

SOUTH AFRICAN 1918–2007

*House Facade*

signed  
oil on board  
74,5 by 49,5 cm

**R30 000 – 50 000**

67

Carl Walter  
**MEYER**

SOUTH AFRICAN 1965–

*Farm, Bethulie*

signed with the artist's initials and  
dated 97  
oil on canvas  
64,5 by 79,5 cm

**R30 000 – 40 000**

68

John Koenakeefe  
**MOHL**

SOUTH AFRICAN 1903–1985

*Early Morning in Bechuanaland*

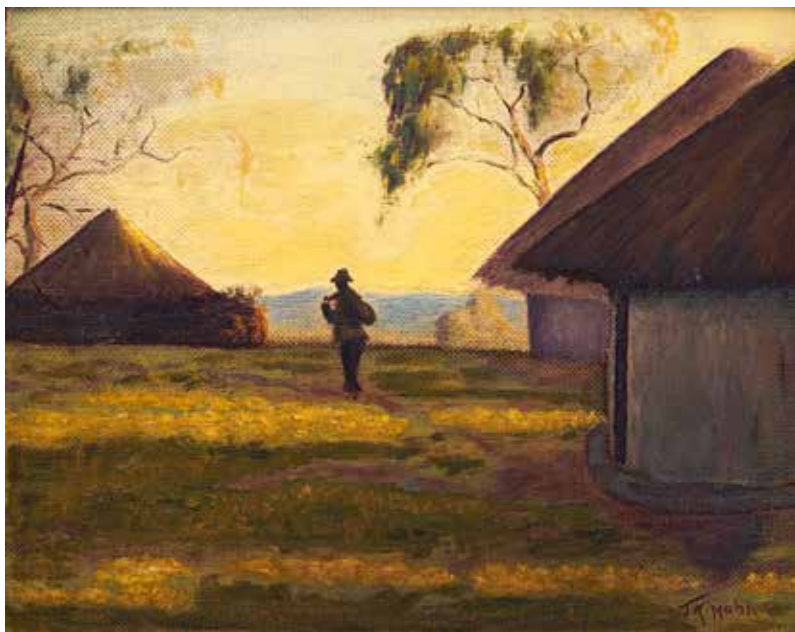
signed; inscribed with the title on the  
reverse  
oil on board  
35 by 44,5 cm

**R15 000 – 20 000**

67



68



69

Titta

FASCIOTTI

SOUTH AFRICAN 1927–1993

*Bridesmaids*

signed and dated 86  
watercolour and charcoal  
70,5 by 50,5 cm

**R18 000 – 24 000**

70

Walter Whall

BATISS

SOUTH AFRICAN 1906–1982

*Nopaline Xosa*

signed and inscribed with the title twice  
pastel  
40,5 by 50 cm

**R20 000 – 30 000**

71

After Anton

VAN WOUW

SOUTH AFRICAN 1862–1945

*Shangaan*

signed, dated 1907 and inscribed 'S.A. Joh-burg';  
engraved with the artist's name and title on a  
plaque adhered to the base  
bronze with a dark brown patina, mounted on a  
wooden base  
height: 31 cm, including base

**R30 000 – 50 000**

LITERATURE

Duffey, AE. (2008) *Anton van Wouw: The Smaller Works*, Pretoria: Protea Book House. Another cast from the edition illustrated on pages 63 to 64.  
Duffey, AE. (1981) *Anton van Wouw 1862-1945 en die Van Wouwhuis*, Pretoria: University of Pretoria. Another cast from the edition illustrated on page 29.



69



70



71



72

72

Marjorie  
WALLACE

SOUTH AFRICAN 1925–2005

*Doves*

signed  
oil on canvas  
68 by 50 cm

R30 000 – 40 000



73

73

Marjorie  
WALLACE

SOUTH AFRICAN 1925–2005

*Hymns at Church*

signed  
gouache and pastel  
48 by 63 cm

R25 000 – 40 000

74

Terence John  
MCCAWE

SOUTH AFRICAN 1913–1978

*Bouquet of Spring Flowers*

signed

oil on canvas laid down board  
49 by 39,5 cm

**R50 000 – 80 000**

75

Conrad Nagel Doman  
THEYS

SOUTH AFRICAN 1940–

*Kappertjies in Grys Pot*

signed and dated 1986; inscribed with  
the title on the reverse

oil on canvas  
32 by 35 cm

**R30 000 – 40 000**



74



75



76

76

Frans Martin  
CLAERHOUT

SOUTH AFRICAN 1919–2006

*Mother and Child with Rooster*

signed

oil on board

41,5 by 59 cm

**R25 000 – 35 000**

77

Frans Martin  
CLAERHOUT

SOUTH AFRICAN 1919–2006

*Man Pushing a Wheelbarrow*

signed

oil on board

49 by 59 cm

**R40 000 – 60 000**



77



78

78

Amos

**LANGDOWN**

SOUTH AFRICAN 1930–2006

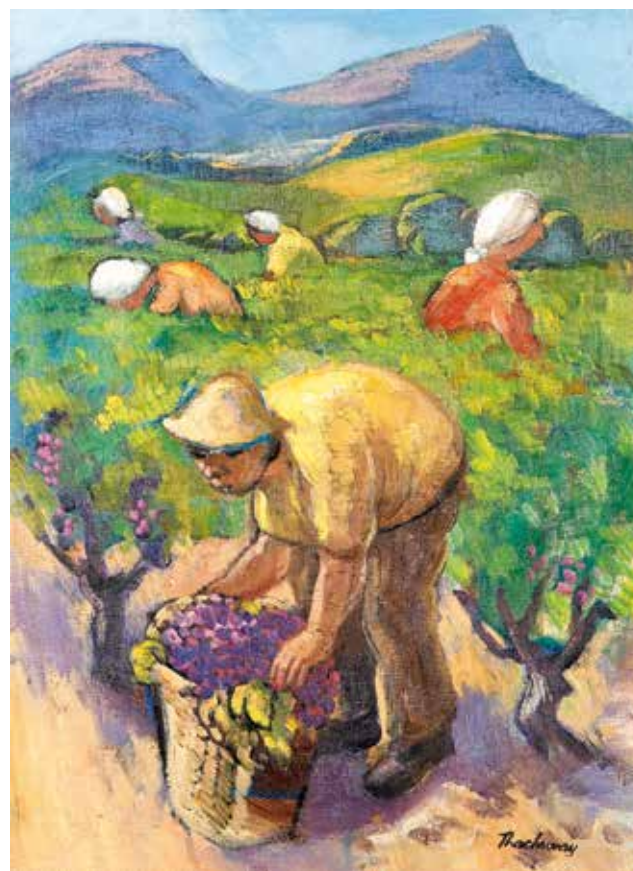
*Fisher Folk*

signed

oil on canvas laid down on board

58 by 44 cm

**R20 000 – 30 000**



79

79

James Vicary

**THACKWRAY**

SOUTH AFRICAN 1919–1994

*Grape Picking*

signed

oil on canvas laid down on board

52 by 38,5 cm

**R25 000 – 35 000**

EXHIBITED

District Six Museum, Cape Town,  
*District Six: Its Clay Soil Speaks –  
An Exhibition of the Work of James  
Vicary Thackwray*, 15 April to  
15 May 2015, catalogue number  
DS13, illustrated

LITERATURE

Munro, George Ross.  
(2013) *James Thackwray:  
an Unassuming Master*,  
Johannesburg: Paja Publishers.  
Illustrated in colour on page 42.



80

Ephraim Mojalefa  
**NGATANE**

SOUTH AFRICAN 1938–1971

*The Bench Maker*

signed, dated 63 and inscribed with  
the title on the reverse  
ink and watercolour  
50,5 by 69 cm

**R25 000 – 40 000**

81

Phaswane David  
**MOGANO**

SOUTH AFRICAN 1932–2000

*The last shacks in Pimville were  
demolished*

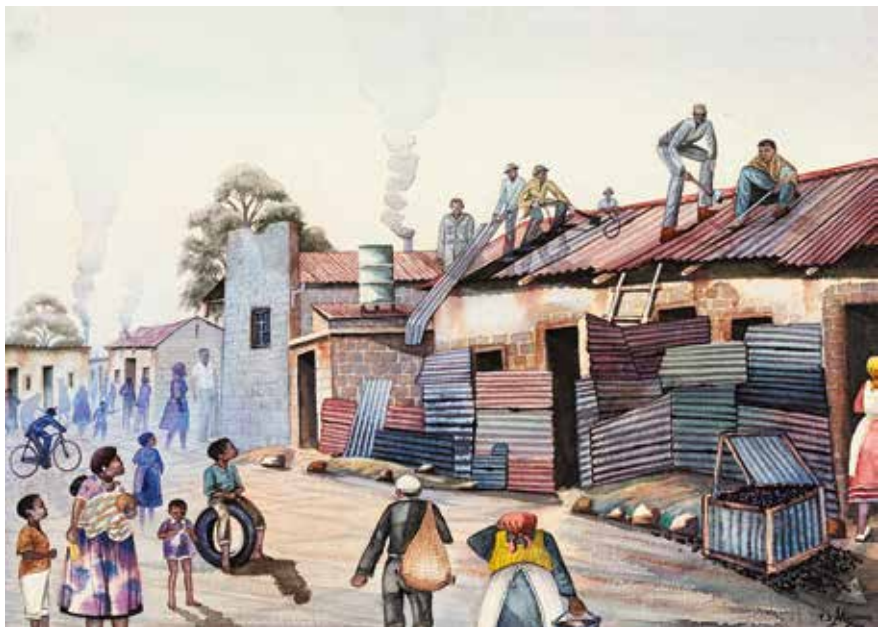
signed and dated 1981; signed, dated  
1981, inscribed with the title and 'J.H.B.  
S.A.' on the reverse  
watercolour  
51 by 71 cm

**R15 000 – 20 000**



80

© The Estate of Ephraim Ngatane | DALRO



81

© The Estate of PD Mogano | DALRO



82  
© Gerard Sekoto Foundation | DALRO

82

Gerard  
**SEKOTO**

SOUTH AFRICAN 1913–1993

*Night Dancers*

signed and dated '56

watercolour

35 by 40,5 cm

**R50 000 – 70 000**



83

83

Hermann  
NIEBUHR

SOUTH AFRICAN 1972–

*Johannesburg Skyline*, diptych

signed and dated 2008

oil on canvas

120 by 302 cm, combined

(2)

R80 000 – 120 000

84

Marie

**VERMEULEN-BREEDT**

SOUTH AFRICAN 1954–

*Kristie in the Minehouse – Cullinan*

signed and dated 2015; inscribed with the title, size and medium on the reverse

oil on canvas

59 by 48,5 cm

**R25 000 – 35 000**



85

Marie

**VERMEULEN-BREEDT**

SOUTH AFRICAN 1954–

*Early Morning preparations before Gallops at Highveld*

signed and dated 2015; inscribed with the title, medium and 'Painted on the Highveld whilst the artist was a racehorse trainer' on the stretcher

oil on canvas

51 by 61 cm

**R20 000 – 30 000**





86

86

Nico (Nicholaas Oswald)

**ROOS**

SOUTH AFRICAN 1940–

*Bergland*

signed; inscribed with the artist's name  
and title in another hand on the reverse

oil on canvas

118,5 by 178,5 cm

**R15 000 – 20 000**

87

Nico (Nicholaas Oswald)

**ROOS**

SOUTH AFRICAN 1940–

*Berg, Khomas Hochland, Namibia*

signed and dated 1990; inscribed with  
the title in another hand on the reverse

oil on canvas

120 by 89,5 cm

**R10 000 – 15 000**



87

88

Judith

**MASON**

SOUTH AFRICAN 1938–

*Shiva, Dancer of the Spirit*, triptych

signed

oil on canvas laid down on board

299 by 117 cm, combined

(3)

**R60 000 – 90 000**



88

© Judith Mason | DALRO



89

89

Raymond Hillary  
ANDREWS

SOUTH AFRICAN 1948–

*A Dream Remembered*

signed with the artist's initials; signed,  
dated 1997 and inscribed with the title  
and medium on the reverse  
carved, incised and painted wood panel  
with gold leaf  
125,5 by 89 cm

R25 000 – 40 000



90

90

Lucky Madlo  
SIBIYA

SOUTH AFRICAN 1942–1999

*Twins and Mother*

signed and dated 81; inscribed with the title on  
the reverse  
carved, incised and painted wood panel  
77,5 by 61 cm

R50 000 – 80 000



91

91

Bettie

**CILLIERS-BARNARD**

SOUTH AFRICAN 1914–2010

*Conversation*

signed and dated 1977; inscribed with  
the title on the reverse

oil on canvas

40 by 40 cm

**R25 000 – 40 000**



92

92

Bettie

**CILLIERS-BARNARD**

SOUTH AFRICAN 1914–2010

*Face*

signed and dated 1974

oil on canvas

50 by 40 cm

**R20 000 – 30 000**



93

Simon Patrick  
**STONE**

SOUTH AFRICAN 1952–

*Near Aberdeen*

signed; inscribed with the  
artist's name and title on a label  
adhered to the reverse  
oil on panel  
99 by 77 cm

**R40 000 – 60 000**

PROVENANCE

Everard Read Gallery,  
Johannesburg

EXHIBITED

Knysna Fine Art, Knysna



93

94

Cecily  
SASH

SOUTH AFRICAN 1924–

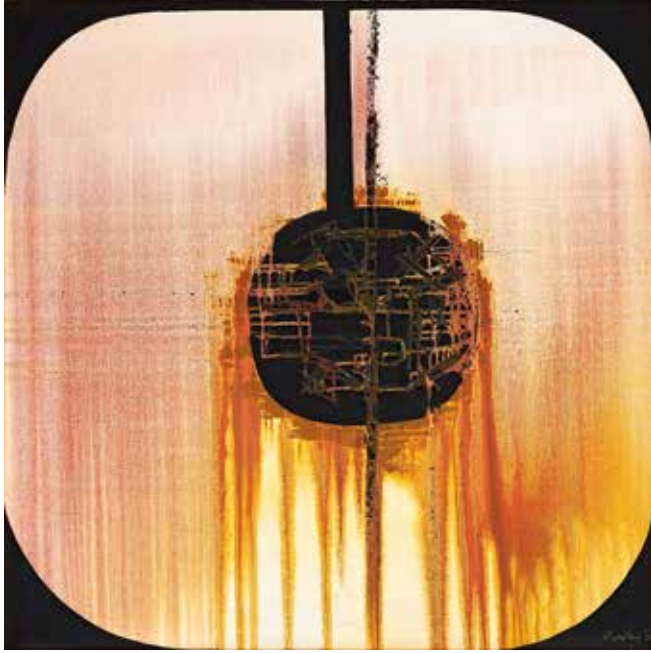
*First Day of School*

signed and dated '55  
oil on board  
61 by 30 cm

R40 000 – 60 000

94





95

95

Larry (Laurence Vincent)  
**SCULLY**

SOUTH AFRICAN 1922–2002

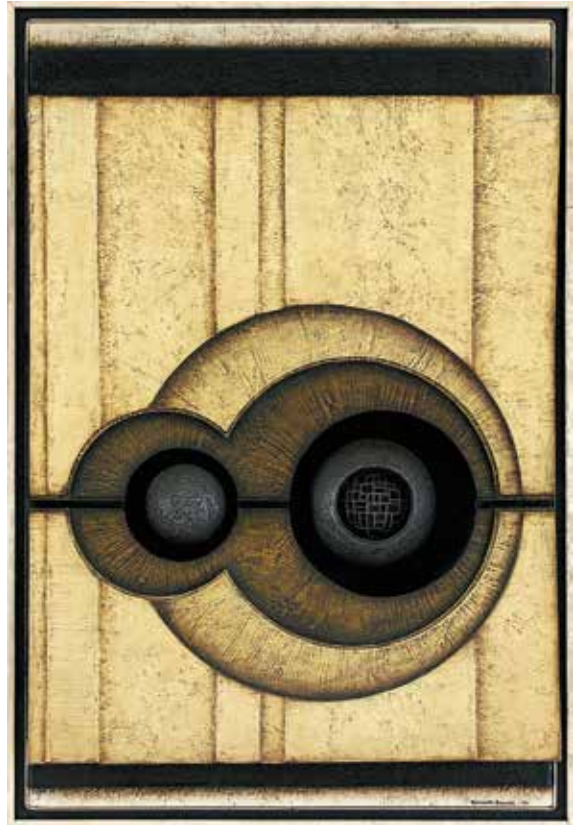
*Primeval O, No III*

signed, dated '72; dated '72 and inscribed with the title on the reverse

oil on canvas

91 by 91 cm

**R50 000 – 80 000**



96

96

Kenneth  
**BAKKER**

SOUTH AFRICAN 1926–1988

*Spherical Forms No 5*

signed and dated 70; signed, inscribed with the title and 'Simon's Town' on the reverse

relief construction

96,5 by 66 by 18 cm

**R30 000 – 50 000**

97

Diederick George  
**DURING**

SOUTH AFRICAN 1917–1991

*In a Crowd*

signed  
oil on board  
56,5 by 49,5 cm

**R40 000 – 60 000**

98

Eben

**VAN DER MERWE**

SOUTH AFRICAN 1932–

*Abstract Landscape*

signed and dated '65  
oil on panel  
42 by 60 cm

**R20 000 – 30 000**



97



98

99

Johannes Petrus  
**MEINTJES**

SOUTH AFRICAN 1923–1980

*Still Life with Flask and Leaves*

signed and dated 1975

oil on board

61 by 39,5 cm

**R60 000 – 90 000**

*The Diary of Johannes Meintjes*,  
catalogue number JM1196



99



100

100

Paul

**DU TOIT**

SOUTH AFRICAN 1922–1986

*Landskap, Noordhoek*

signed and dated 52; inscribed with the title on the stretcher

oil on canvas

49,5 by 60 cm

**R60 000 – 80 000**



101

101

Jack  
HEATH

BRITISH 1915–1969

*Thornveld in Red and Blue*

signed and dated 59  
acrylic on board  
120 by 150,5 cm

**R40 000 – 60 000**

102

Fred  
SCHIMMEL

SOUTH AFRICAN 1928–2009

*Abstract Landscape*

signed  
oil on card  
62 by 86 cm

**R20 000 – 30 000**



102



103

103

Fred

**SCHIMMEL**

SOUTH AFRICAN 1928–2009

*Abstract Composition #1120*

signed and dated '04; signed, dated '04  
and numbered on the reverse  
oil on card

62,5 by 79 cm

**R20 000 – 30 000**

104

Nel (Petronella Margaretha)

**ERASMUS**

SOUTH AFRICAN 1928–

*Windswept Moonflower*

signed twice and dated 07; signed and  
inscribed with the title on the reverse  
oil on paper laid down on board

98 by 69,5 cm

**R10 000 – 15 000**



104





105

105

Sebastian

**PETHER**

BRITISH 1790–1844

*A Watermill beside a Lake in the Moonlight*

engraved with the artist's name on a plaque adhered to the frame; printed with the artist's name and title on a label adhered to the reverse

oil on canvas

44,5 by 59,5 cm

**R20 000 – 30 000**



106

106

Zoltan

**BORBEREKI**

SOUTH AFRICAN 1907–1992

*Wind*

engraved with the artist's name and title on a plaque adhered to the base

bronze with a verdigris patina,

on a painted bronze base

height: 111 cm, including base

**R30 000 – 40 000**



107

107

Cecil  
HIGGS

SOUTH AFRICAN 1898–1986

*Pondoland Forest*

signed and dated 54-60  
oil on canvas laid down on panel  
49,5 by 39,5 cm

**R30 000 – 40 000**

PROVENANCE

Johans Borman Fine Art Gallery, Cape Town



108

108

Errol Stephen  
BOYLEY

SOUTH AFRICAN 1918–2007

*Ripples on a Pond*

signed  
oil on board  
73 by 49 cm

**R25 000 – 40 000**

109

Alexis

**PRELLER**

SOUTH AFRICAN 1911–1975

*Three Benin Figures*

signed on the reverse  
oil on canvas laid down on panel  
15 by 20 cm

**R30 000 – 50 000**

**PROVENANCE**

Acquired directly from Joan Hoather,  
Gainsborough Gallery, Johannesburg

**LITERATURE**

Berman, Esmé and Nel, Karel. (2009)  
*Alexis Preller: Africa, the Sun and Shadows*,  
Johannesburg: Shelf Publishing. The  
carved Benin Figure illustrated on  
page 289.

Berman, Esmé and Nel, Karel. (2009)  
*Alexis Preller: Collected Images*,  
Johannesburg: Shelf Publishing. A  
photograph of the artist's Ygdrasil studio  
with the carved Benin Figures illustrated  
on page 53.



109

110

Bettie

**CILLIERS-BARNARD**

SOUTH AFRICAN 1914–2010

*Cosmic Sight*

signed and dated 2004; inscribed with  
the title, medium and 'Theme: Colour as  
Language' on the reverse  
oil on canvas  
80,5 by 60 cm

**R30 000 – 50 000**



110



111

111

Alfred Friedrich Franz

**KRENZ**

SOUTH AFRICAN 1899–1980

*Nazaré Beach, Portugal*

signed and dated 1954; signed, inscribed with the

title and 'Rondebosch' on the reverse

oil on board

58,5 by 77,5 cm

**R50 000 – 70 000**

EXHIBITED

The South African National Gallery, Cape Town

LITERATURE

Davis-Mesman, Ellen. (1998) *The Colourful Palette of Alfred Krenz*, Cape Town: Ellen-Davis-Mesman. Illustrated in colour on page 55, with the title *San Nazaré, Portugal*.

112

Jean Max  
Friedrich  
**WELZ**

SOUTH AFRICAN 1900–1975

*Denie Roberts Dancing Group, 1951*

signed and dated 52; inscribed with the  
artist's name and title on a label adhered  
to the reverse

oil on canvas laid down on board  
29 by 19 cm

**R60 000 – 90 000**

EXHIBITED

Pretoria Art Museum, Pretoria

PROVENANCE

The late Jack Lewsen



112



113

**113**

Douglas Owen

**PORTWAY**

SOUTH AFRICAN 1922–1993

*Figurative Abstract*

signed and dated 66

oil on canvas

61 by 91,5 cm

**R40 000 – 60 000**



114

© The Estate of Cecil Skotnes | DALRO



115

© The Estate of Cecil Skotnes | DALRO



114

Cecil Edwin Frans  
SKOTNES

SOUTH AFRICAN 1926–2009

*Mine Shaft*, original woodblock and woodcut  
woodblock signed on the reverse; woodcut signed, dated 81 and  
numbered 1/50 in pencil in the margin  
carved and incised woodblock with accompanying colour woodcut  
woodblock: 24,5 by 30,5 cm  
(2)

**R25 000 – 40 000**

This print was produced for the Edward L. Bateman Limited company  
calendar of 1981 for the months March and April.

115

Cecil Edwin Frans  
SKOTNES

SOUTH AFRICAN 1926–2009

*Green Hills and Fields*, original woodblock and woodcut  
woodcut signed, dated 81 and numbered 1/50 in pencil in the margin  
carved and incised woodblock with accompanying colour woodcut  
woodblock: 24,5 by 30,5 cm  
(2)

**R25 000 – 40 000**

This print was produced for the Edward L. Bateman Limited company  
calendar of 1981 for the months July and August.

116

Hannes

**HARRS**

SOUTH AFRICAN 1927–2006

*Totem*

signed and numbered 3/9  
bronze with a dark brown patina  
height: 104 cm including base

**R30 000 – 40 000**



116



117

117

Hannes

**HARRS**

SOUTH AFRICAN 1927–2006

*Totem with Geometric Motifs*

signed and dated 2005  
mixed media on a wooden base  
height: 133 cm, including base

**R35 000 – 50 000**



118

John Koenakeefe

**MOHL**

SOUTH AFRICAN 1903–1985

*Cyclists, on a sunset journey, along  
a country road, near Pochefstroom  
(S.A.)*

signed and dated 'in the 20th century';  
signed, dated 'in the 20th Century' and  
inscribed with the title on the reverse  
oil on board  
44 by 63,5 cm

**R50 000 – 80 000**

119

Hannes

**HARRS**

SOUTH AFRICAN 1927–2006

*Geometric Forms*

signed and dated 1971 on the reverse  
carved wood  
65 by 30 by 7 cm

**R25 000 – 40 000**



118



119

120

Lucky Madlo

SIBIYA

SOUTH AFRICAN 1942–1999

*Totem with Seven Figures*

signed and dated 81

carved, incised and painted wood panel

252,5 by 36,5 cm

R80 000 – 120 000

120





121

121

Edoardo Daniele  
VILLA

SOUTH AFRICAN 1915–2011

*Vertical Form*

signed, dated 31.5.1992 and numbered 1  
painted steel  
height: 112 cm

**R60 000 – 90 000**



122

122

Eugene  
LABUSCHAGNE

SOUTH AFRICAN 1921–1990

*Abstract Composition*

signed and dated 1957  
oil on hessian  
53 by 64 cm

**R30 000 – 50 000**

123

Cecil Edwin Frans  
**SKOTNES**

SOUTH AFRICAN 1926–2009

*Man's Gold*

A portfolio of twenty eight woodcuts by Cecil Skotnes, 6 poems and text by Stephen Gray, based on ideas by Denis Godfrey. These woodcuts were printed from original blocks in 2 to 5 colours on Zerkall Buetten paper by Egon Guenther, each copy is hand bound in Oasis goat skin by Peter Carstens, Johannesburg, August 1975 to January 1979, edition limited to 75 copies and 15 artist proofs, this numbered Artist Proof XII/XV, each woodcut signed and numbered Artist Proof XII/XV in pencil in the margin, the title page signed by both the artist and poet colour woodcuts  
sheet size: 38,5 by 53,5 cm each  
portfolio size: 41 by 56,5 by 5 cm

**R30 000 – 40 000**

124

Wopko  
**JENSMA**

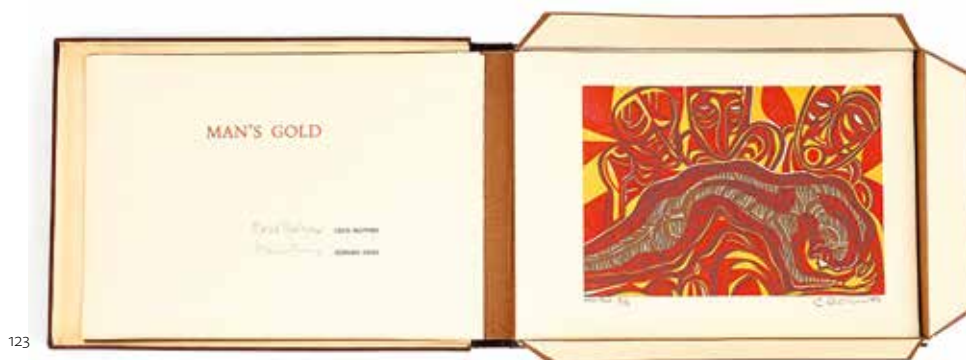
SOUTH AFRICAN 1939–?

*Figural Form I and II*, two

each signed with the artist's initials and dated 73

mixed media on paper  
sheet size: 56 by 38 cm each  
(2)

**R18 000 – 24 000**



123

© The Estate of Cecil Skotnes | DALRO



124



125

Edoardo Daniele  
VILLA

SOUTH AFRICAN 1915–2011

*Abstract Throne*

signed and dated 1993  
painted steel  
height: 66 cm

R60 000 – 90 000



125

126

Judith  
MASON

SOUTH AFRICAN 1938–

*A Shrine to the Clumsy Juggler*

signed; inscribed with the title on the  
reverse  
oil on canvas, in the artist's handmade  
frame

120 by 76 cm, including frame

R40 000 – 60 000



126

© Judith Mason | DALRO

127



127

Carl Adolph  
BÜCHNER

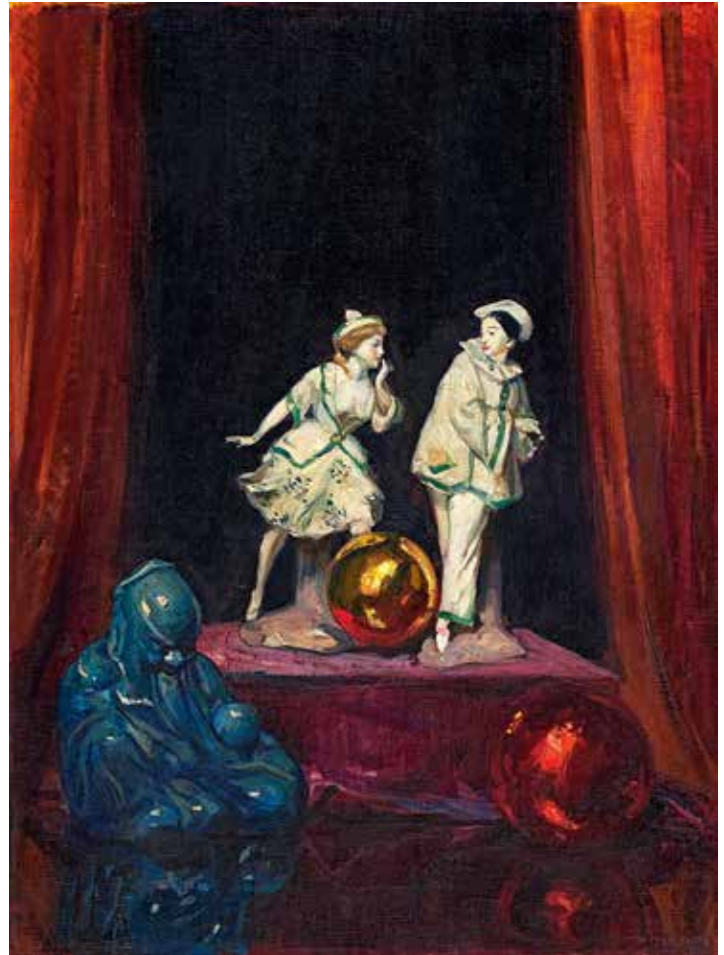
SOUTH AFRICAN 1921–2003

*Harlequin Wearing a Sailor's Hat*

signed  
oil on board  
60 by 38 cm

R40 000 – 60 000

128



128

John Henry  
AMSHEWITZ

SOUTH AFRICAN 1882–1942

*Comedy*

signed  
oil on canvas  
59,5 by 44,5 cm

R20 000 – 30 000



129

129

Gregoire Johannes  
BOONZAIER

SOUTH AFRICAN 1909–2005

*Twee Bekers en Ikon*

signed and dated 1997; inscribed with the title on  
the reverse

oil on canvas

39,5 by 28,5 cm

R50 000 – 70 000



130

130

Edoardo Daniele  
VILLA

SOUTH AFRICAN 1915–2011

*Figure I and II, two*

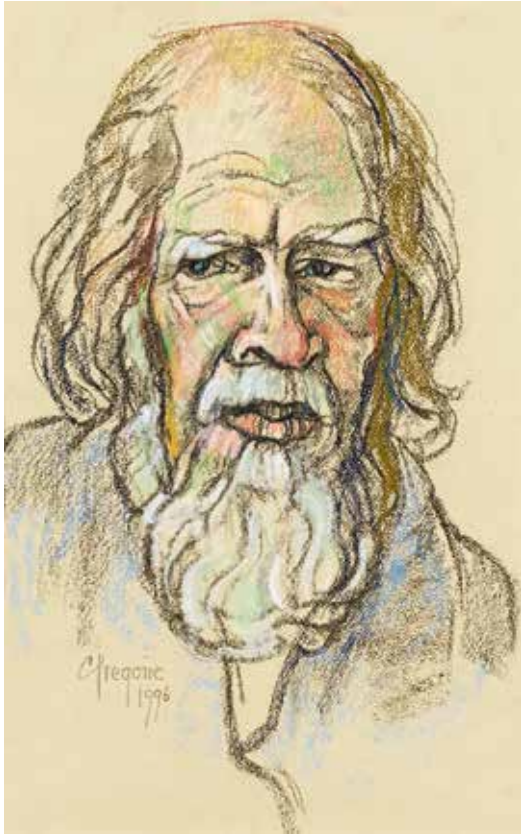
each signed and dated 1978

bronze with a brown patina, mounted on a steel base

heights: 38 and 28 cm

(2)

R50 000 – 70 000



131

131

Gregoire Johannes  
**BOONZAIER**

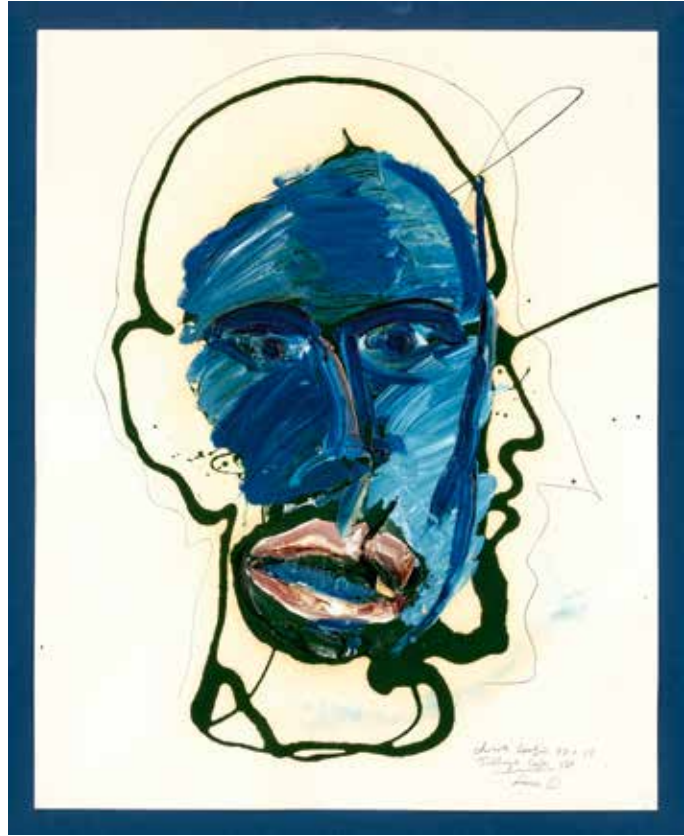
SOUTH AFRICAN 1909–2005

*Self-portrait, Bushybeard!*

signed and dated 1996; inscribed with the title  
on the reverse

charcoal and pastel  
45,5 by 28,5 cm

**R30 000 – 40 000**



132

132

Christo  
**COETZEE**

SOUTH AFRICAN 1929–2000

*Face 1*

signed, dated 88, numbered 13, inscribed with the title  
and 'Tulbach, Cape, SA' in pencil

mixed media on paper  
64 by 50 cm

**R25 000 – 35 000**





133

133

Stanley  
**NKOSI**

SOUTH AFRICAN 1945–1988

*Bull*

bronze with a dark brown patina  
height: 16,5 cm  
(2)

**R50 000 – 80 000**

Accompanied by a charcoal and pastel  
preliminary drawing, signed and dated '74



134

Jacques René  
**FULLER**

SOUTH AFRICAN 1960–

*Padda Prince*, water fountain

signed and dated 2013  
bronze and stainless steel  
height: 100 cm

**R30 000 – 40 000**

134

135

Pranas

**DOMSAITIS**

SOUTH AFRICAN 1880–1965

*Karoo at Night*

signed

oil on board

51 by 58 cm

**R50 000 – 70 000**



135

136

Johannes Petrus

**MEINTJES**

SOUTH AFRICAN 1923–1980

*Meerkatte in die Winter*

signed and dated 1970; inscribed

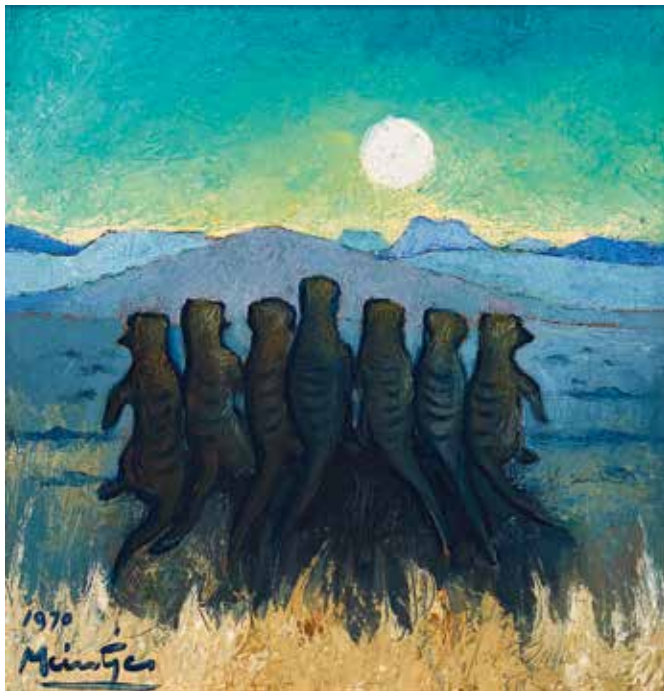
with the title on the reverse

oil on board

44 by 43 cm

**R40 000 – 60 000**

*The Diary of Johannes Meintjes,*  
catalogue number JM1037



136



137

137

Willie (William)  
BESTER

SOUTH AFRICAN 1956–

*Township Scene*

signed and dated 97  
oil and collage on board  
35 by 89 cm

**R25 000 – 40 000**

138

George Velaphi  
MZIMBA

SOUTH AFRICAN 1959–

*Maria Mahlangu*

signed and dated 01; inscribed with the  
artist's name, title and medium on a label  
adhered to the reverse  
mixed media on steel and wood  
129 by 100 cm

**R40 000 – 60 000**

PROVENANCE

Everard Read Gallery, Johannesburg



138

139

Zwelethu  
MTHETHWA

SOUTH AFRICAN 1960–

...*Break...*

signed and dated '94; inscribed with  
the artist's name, title, medium and  
dated 1994 on a label adhered to the  
reverse

pastel  
67 by 98,5 cm

R50 000 – 70 000

PROVENANCE

Goodman Gallery, Johannesburg

140

Zwelethu  
MTHETHWA

SOUTH AFRICAN 1960–

*Neighbour's Ambulance*

signed and dated '97  
chalk pastel  
70 by 99 cm

R60 000 – 90 000



139



140



141

141

Kevin

ROBERTS

SOUTH AFRICAN 1965–2009

*Rainmaker*

signed with the artist's initials and dated 95

oil on panel

96,5 by 180 cm

R40 000 – 60 000



142

142

John Barnett

**KRAMER**

SOUTH AFRICAN 1946–

*P J Meiring: Koffiehuis*

signed and dated 94

oil on canvas

49 by 75 cm

**R30 000 – 40 000**

143

Keith Savel

**ALEXANDER**

SOUTH AFRICAN 1946–1998

*Lone Figure*

signed and dated 75

oil on paper laid down on board

36 by 49 cm

**R25 000 – 40 000**



143

144

Robin Kenneth  
**LEWIS**

SOUTH AFRICAN 1942–1988

*The Conversation*

signed  
oil on board  
98 by 113,5 cm

**R50 000 – 70 000**



144

145

Colbert  
**MASHILE**

SOUTH AFRICAN 1972–

*Three Graces*

signed and dated 07; signed and  
inscribed with the title and medium  
on the stretcher  
oil on canvas  
133 by 181 cm

**R20 000 – 30 000**



145



TWO VIEWS OF LOT 146

146

David James  
**BROWN**

SOUTH AFRICAN 1951–

*Homage to a Free-range Chicken*

signed with the artist's initials and dated 88  
wood, iron and ceramic plate  
height: 42 cm

**R20 000 – 30 000**

147

Jackson (Jekiseni  
Mbhezima Sagani)  
**HLUNGWANI**

SOUTH AFRICAN 1923–2010

*The Prophet*

carved wood  
height: 77 cm

**R30 000 – 40 000**



147



148

Walter Whall  
BATTISS

SOUTH AFRICAN 1906–1982

*Orgy*

signed and numbered 45/45 in pencil in the margin  
colour screenprint  
sheet size: 45 by 64 cm

**R35 000 – 45 000**



148

149

Walter Whall  
BATTISS

SOUTH AFRICAN 1906–1982

*Orgy 4*

signed, numbered 25/39 and inscribed  
with the title in pencil in the margin  
colour screenprint  
sheet size: 45 by 63 cm

**R35 000 – 45 000**

LITERATURE

Skawran, Karin and Macnamara, Michael.  
(eds.) (1985) *Walter Battiss*, Johannesburg:  
AD. Donker. Another example from this  
edition illustrated in colour on page 89,  
plate 18.

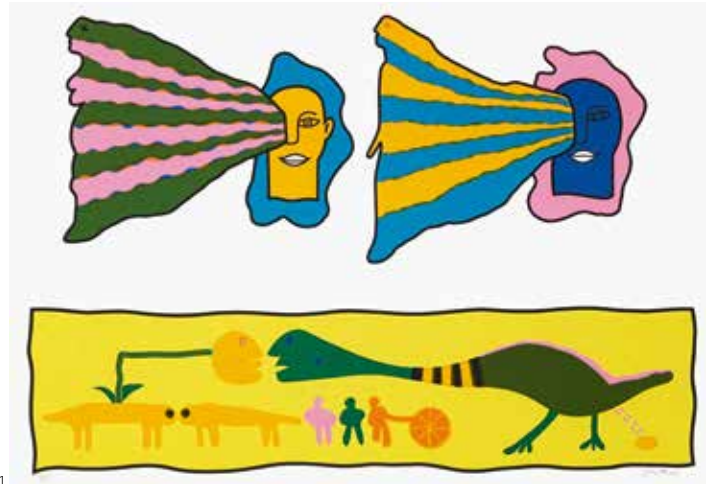
Skawran, Karin. (ed.) (2005) *Walter Battiss,  
Gentle Anarchist*, Johannesburg: The  
Standard Bank Gallery. Another example  
from this edition illustrated in colour on  
page 55.



149



150



151

150

Walter Whall  
BATTISS

SOUTH AFRICAN 1906–1982

*Untitled*

signed and numbered 8/25 in pencil  
colour screenprint  
image size: 43 by 53 cm

**R18 000 – 24 000**

LITERATURE

Skawran, Karin. (ed.) (2005) *Walter Battiss, Gentle Anarchist*, Johannesburg: The Standard Bank Gallery. Another example from this edition illustrated in colour on page 182.

151

Walter Whall  
BATTISS

SOUTH AFRICAN 1906–1982

*Golden Egg*

signed and numbered 11/25 in pencil  
colour screenprint  
image size: 39,5 by 57 cm

**R15 000 – 20 000**

152

Walter Whall  
BATTISS

SOUTH AFRICAN 1906–1982

*Four Excessive Females*

signed, numbered 8/25 in pencil and  
inscribed with the title in pen  
colour screenprint  
image size: 60,5 by 42 cm

**R18 000 – 24 000**



152

153

Braam J.  
**KRUGER**

SOUTH AFRICAN 1950–2008

*Batman*

signed and dated 31.1.85  
oil on board  
120,5 by 159 cm

**R30 000 – 50 000**

154

Norman Clive  
**CATHERINE**

SOUTH AFRICAN 1949–

*Anaesthetized*

signed and dated '94; inscribed  
with the title on a label adhered  
to the reverse  
oil on canvas  
29 by 38 cm

**R50 000 – 70 000**





155

155  
Peter  
**SCHÜTZ**

SOUTH AFRICAN 1942–2008  
*Chair*  
carved and painted wood  
height: 160 cm

**R40 000 – 60 000**



156

156  
Walter Whall  
**Battiss**

SOUTH AFRICAN 1906–1982  
*Angels Admiring a Metamorphic Woman*

signed and inscribed with the title  
ink and watercolour  
26,5 by 41 cm

**R30 000 – 50 000**



157

157

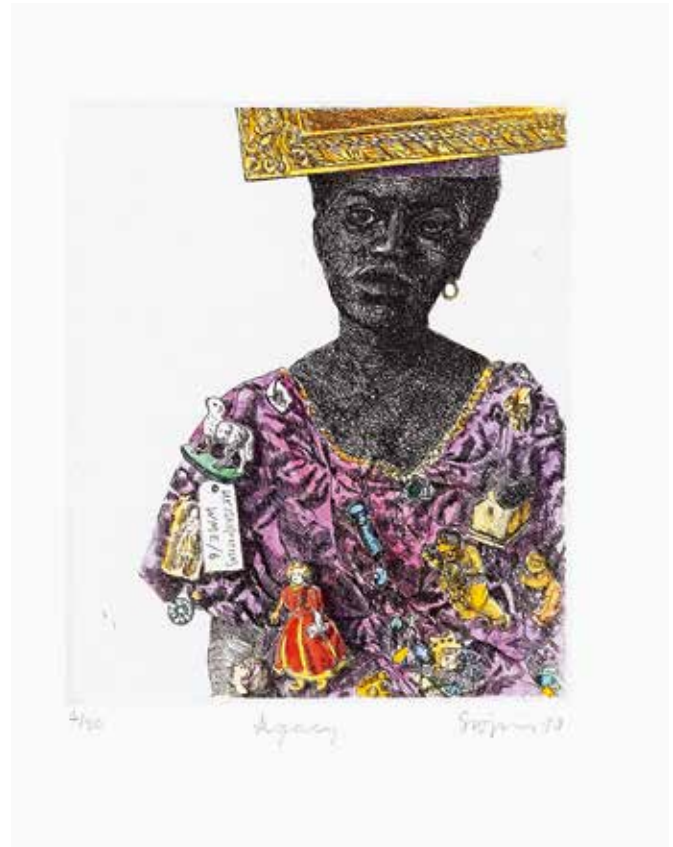
Penny (Penelope)  
SIOPIIS

SOUTH AFRICAN 1953–

*Colony*

signed, dated '90, numbered 11/30, inscribed with the title in pencil and embossed with the Caversham Press chop mark in the margin  
hand coloured etching  
sheet size: 33 by 25 cm

**R15 000 – 20 000**



158

158

Penny (Penelope)  
SIOPIIS

SOUTH AFRICAN 1953–

*Legacy*

signed, dated 90, numbered 4/30, inscribed with the title in pencil and embossed with the Caversham Press chop mark in the margin  
hand coloured etching  
sheet size: 33 by 25 cm

**R15 000 – 20 000**

159

Penny (Penelope)

SIOPIS

SOUTH AFRICAN 1953–

*Le Cap*

signed, dated '90, numbered A/P, inscribed with the title in pencil and embossed with the Caversham Press chop mark in the margin

colour lithograph

image size: 30 by 42,5 cm

**R8 000 – 12 000**



159

160

Walter Whall

BATISS

SOUTH AFRICAN 1906–1982

*Henry Hartley's Elephants*

signed, dated 4.12.77 and inscribed 'I am a descendant of Henry Hartley who shot 1200 elephants (which is much less than they seasonally cull in Africa)'

watercolour on card

30,5 by 44,5 cm

**R40 000 – 60 000**

PROVENANCE

Goodman Gallery, Johannesburg



160

161

Robert Griffiths

HODGINS

SOUTH AFRICAN 1920–2010

*Like Westpoint*

signed, dated 2006, inscribed with the title and incised 'Retief o6' on the underside

hand painted and glazed ceramic

diameter: 34 cm

**R10 000 – 15 000**

LITERATURE

van Wyk, Retief. (2008), *The Ceramic Art of Robert Hodgins*, Cape Town: Bell-Roberts Publishing. Illustrated in colour on pages 32 and 125.



161



162

162

Hylton  
NEL

SOUTH AFRICAN 1941–

*Spongeware Bowl with Fish*  
signed with the artist's initials on the  
underside  
glazed earthenware  
diameter: 24 cm

**R5 000 – 7 000**

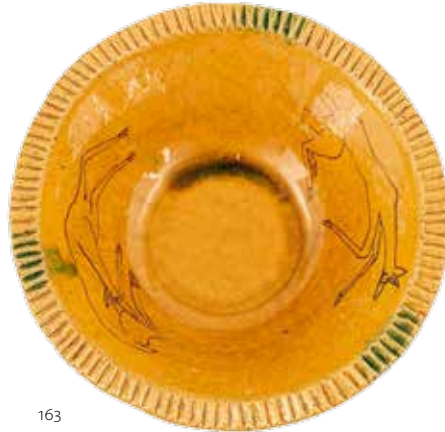
163

Hylton  
NEL

SOUTH AFRICAN 1941–

*Mustard-glazed Bowl*  
signed and dated 26-2-1993  
hand painted and glazed earthenware  
diameter: 30,5 cm

**R5 000 – 7 000**



163

164

Hylton  
NEL

SOUTH AFRICAN 1941–

*Agate-ware Bowl*  
stamped with the artist's monogram and 'Port  
Elizabeth' on the underside  
glazed earthenware  
diameter: 29 cm

**R4 000 – 6 000**

165

Hylton  
NEL

SOUTH AFRICAN 1941–

*Autumn days like heaven*  
signed with the artist's initials and dated 1,5,93  
on the underside  
hand painted and glazed earthenware  
diameter: 21 cm

**R3 000 – 4 000**



164



165

166

Hylton  
NEL

SOUTH AFRICAN 1941–

*Agate-ware Cat with Blue Eyes*  
inscribed 'Port Elizabeth'  
glazed earthenware  
height: 30,5 cm

**R10 000 – 15 000**

A gift from the artist to the current owner.



166

167

Walter Whall

BATISS

SOUTH AFRICAN 1906–1982

*Abstract Figures*

one signed

hand painted and glazed ceramic tiles

15,5 by 15 cm each, two framed sets of  
four tiles

each set: 60,5 by 15 cm

(2)

R30 000 – 40 000



167





168

Aileen  
LIPKIN

SOUTH AFRICAN 1933–1994

*It was Very Good*

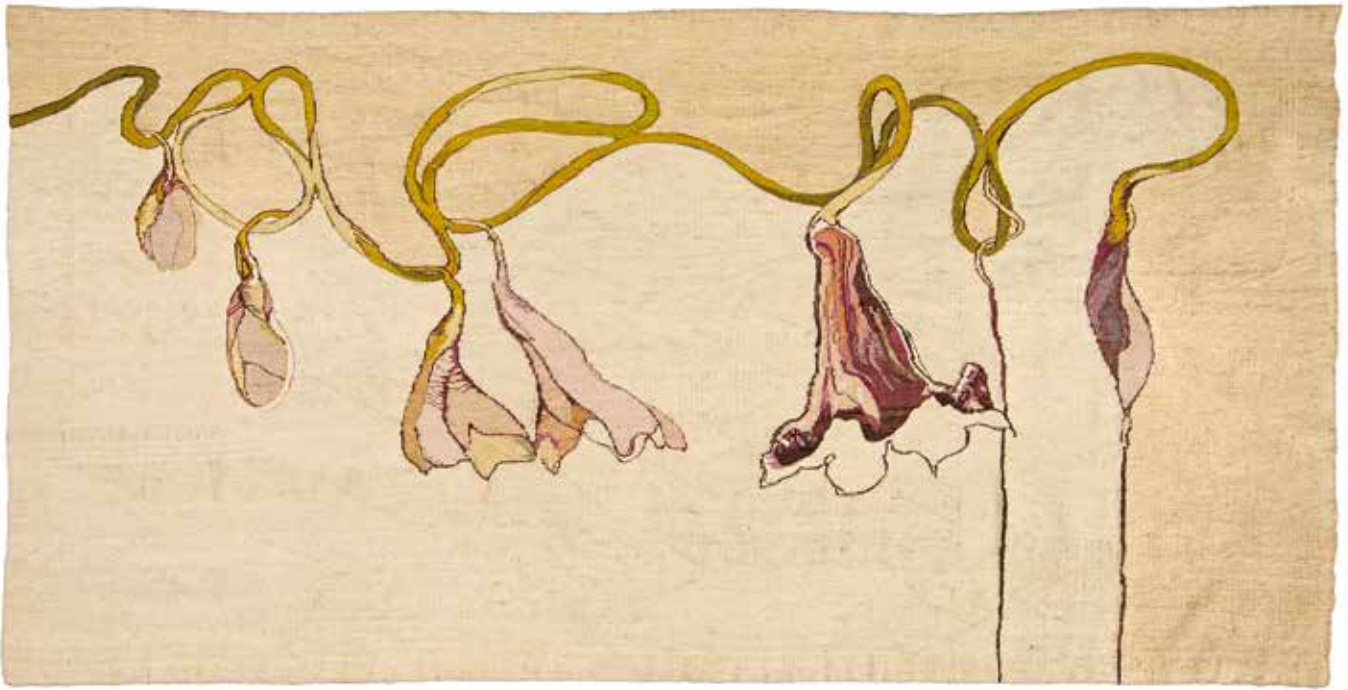
signed, dated '84 and March  
84, inscribed with the title and  
'Weaver: Marguerite Stephens' on a  
label sewn to the reverse  
tapestry

238 by 152 cm

R50 000 – 80 000



168



169

© Judith Mason | DALRO

169

Judith  
MASON

SOUTH AFRICAN 1938–

*Flower Metamorphosis*

signed, dated 1982, numbered 2/3, inscribed  
with the title and 'Weaver: Marguerite  
Stephens' on a label sewn to the reverse  
tapestry

130 by 261 cm

**R40 000 – 60 000**

170

Colin

**RICHARDS**

SOUTH AFRICAN 1954–2012

*A taste of my own medicine*

signed, dated '92, numbered 16/50 and  
inscribed with the title in pencil in the  
margin

hand coloured etching  
35 by 27 cm

**R8 000 – 12 000**



170

171

Colin

**RICHARDS**

SOUTH AFRICAN 1954–2012

*The Only Good Flower*

signed, dated '92, numbered 17/50 and  
inscribed with the title in pencil in the  
margin

hand coloured etching  
32 by 26,5 cm

**R8 000 – 12 000**



171



172

172

Colin

**RICHARDS**

SOUTH AFRICAN 1954–2012

*In the Bud*

signed, dated '92, numbered 17/50 and  
inscribed with the title in pencil in the  
margin

hand coloured etching  
37 by 29 cm

**R8 000 – 12 000**

173

Marlene  
DUMAS

DUTCH/SOUTH AFRICAN 1953–

*Alan Turing*

signed, dated 2014 and 2015, numbered  
30/100 in pencil and embossed with the  
Bernard Ruijgrok Amsterdam chop mark  
lithograph

sheet size: 44,5 by 35 cm

**R20 000 – 30 000**

174

Penny (Penelope)  
SIOPIS

SOUTH AFRICAN 1953–

*Feral Fables; Fetter, 2007*

inscribed with the artist's name, title,  
medium and dated 2007 on a label  
adhered to the reverse  
ink, glue, enamel and oil on paper  
21 by 29,5 cm

**R50 000 – 70 000**

PROVENANCE

Michael Stevenson Gallery, Johannesburg



173



174



175

175

Walter  
**OLTMANN**

SOUTH AFRICAN 1960–

*Caterpillar Suit*

signed and dated 2005

ink and bleach

74 by 54 cm

**R10 000 – 15 000**



176

176

Ezrom Kgobokanyo  
**SEBATA LEGAE**

SOUTH AFRICAN 1938–1999

*Head*

signed

bronze with a brown and verdigris

patina, mounted on a wooden base  
height: 19 cm, including base

**R30 000 – 40 000**

177

Deborah Margaret  
**BELL**

SOUTH AFRICAN 1957–

*Ulysses*

signed, numbered 17/20, inscribed with  
the title in pencil and embossed with  
the Artist Proof Studio chop mark in the  
margin

lithograph with chine collé  
sheet size: 56 by 38,5 cm

**R15 000 – 20 000**

178

Penny (Penelope)  
**SIOPIS**

SOUTH AFRICAN 1953–

*In The West*

inscribed with the title  
mixed media and found objects on  
board

20 by 29 cm

**R20 000 – 30 000**



177



178



179

179

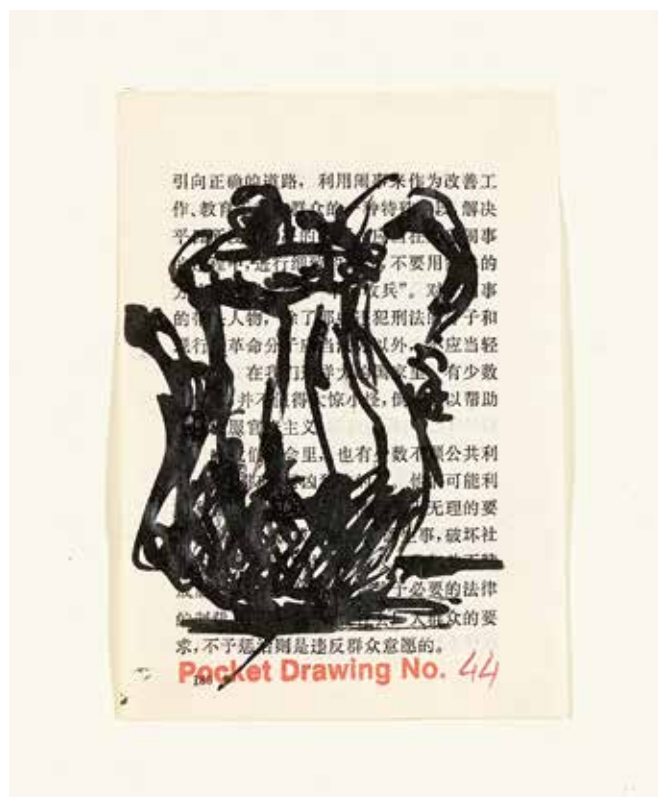
William Joseph  
KENTRIDGE

SOUTH AFRICAN 1955–

*Pocket Drawing No. 88*

numbered 88 in red Conté  
ink on book page  
sheet size: 13 by 9 cm

R20 000 – 30 000



180

180

William Joseph  
KENTRIDGE

SOUTH AFRICAN 1955–

*Pocket Drawing No. 44*

numbered 44 in red Conté  
ink on book page  
sheet size: 13 by 9 cm

R20 000 – 30 000



181

181

William Joseph  
**KENTRIDGE**

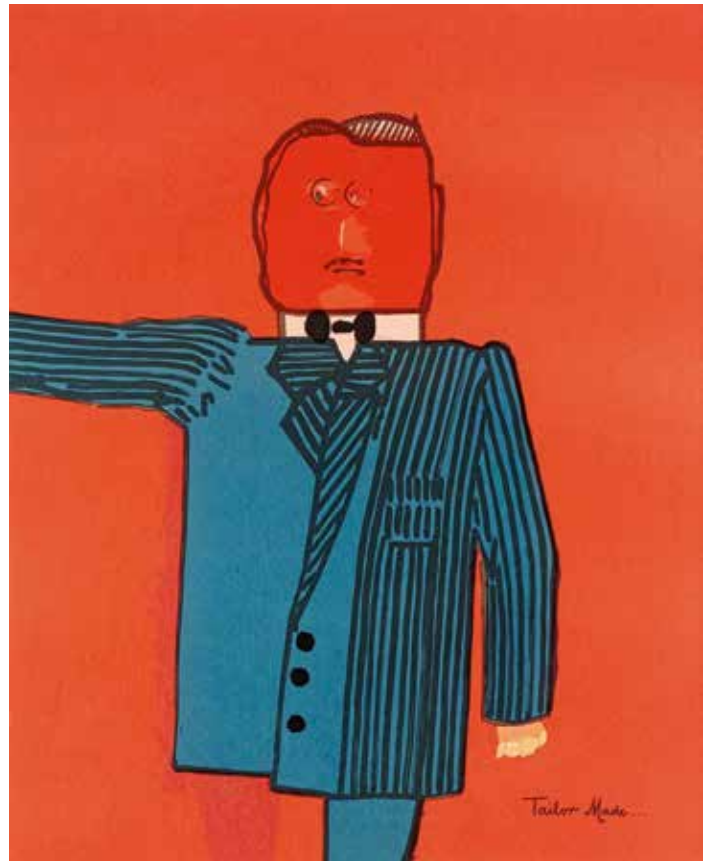
SOUTH AFRICAN 1955–

*Flat Iron Building*

signed, dated Dec 1985, numbered A/P and inscribed  
'For Cattaneo from William' in pencil in the margin  
etching

image size: 22 by 15,5 cm

**R30 000 – 40 000**



182

182

Robert Griffiths  
**HODGINS**

SOUTH AFRICAN 1920–2010

*Tailor Made...*

signed, dated 96 and numbered 11/25 in pencil in  
the margin; printed with the title in the plate  
colour screenprint

image size: 85 by 72 cm

**R18 000 – 24 000**





183

183

Bronwen

**FINDLAY**

SOUTH AFRICAN 1953–

*Still Life with Beaded Animal*

signed and dated '86; signed and dated 1986 on the reverse

oil on canvas, in the artist's hand painted frame

59,5 by 64,5 cm, including frame

**R30 000 – 40 000**



184

184

Edoardo Daniele

**VILLA**

SOUTH AFRICAN 1915–2011

*Head I*

signed, dated 2001 and numbered 1/6  
bronze with a brown patina, mounted on a marble base  
height: 61 cm, including base

**R30 000 – 50 000**

LITERATURE

De Klerk, Chris and De Kamper, Gerard. (2012) *Villa in Bronze*, Pretoria: University of Pretoria Museum. Another cast from this edition illustrated in colour on page 58.

185

Walter Whall

**BATISS**

SOUTH AFRICAN 1906–1982

*Nudes and Birds*

signed

pen and ink

35 by 50 cm

**R30 000 – 50 000**

186

Walter Whall

**BATISS**

SOUTH AFRICAN 1906–1982

*Nudes*

signed and dated 30.8.81

pen and ink

34 by 49 cm

**R30 000 – 50 000**

187

Zander

**BLOM**

SOUTH AFRICAN 1982–

*Untitled Bedroom 2*

signed, dated 2007 and numbered 1/1 in

pencil in the margin

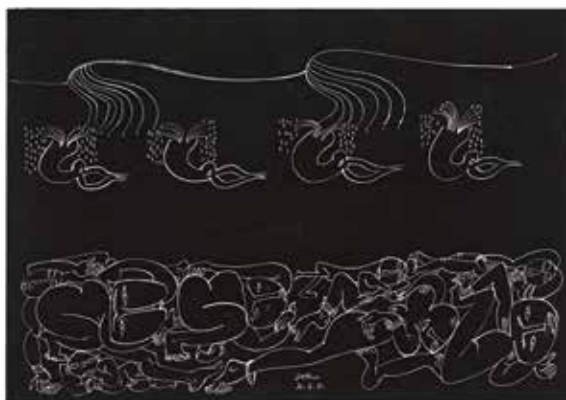
monoprint

sheet size: 55,5 by 81 cm

**R20 000 – 30 000**



185



186



187

188

Clive

VAN DEN BERG

SOUTH AFRICAN 1956–

*Intergenerational dreams*signed, dated 2007 and inscribed with the  
title on the reverse

carved wood

27 by 36 by 6 cm

**R30 000 – 40 000**

189

Kendell

GEERS

SOUTH AFRICAN 1968–

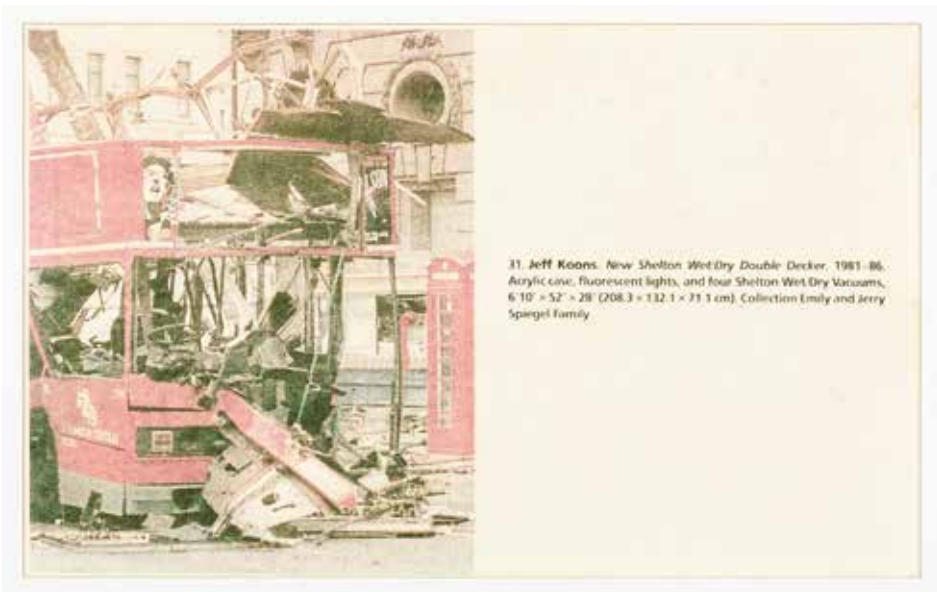
*Jeff Koons. New Shelton Wet/Dry  
Double Decker*signed and dated 2 April 1996 on the  
reverse

colour lithograph

55,5 by 90 cm

**R20 000 – 30 000**

188



31. Jeff Koons. *New Shelton Wet/Dry Double Decker*, 1981–86. Acrylic case, fluorescent lights, and four Shelton Wet/Dry Vacuums, 6'10" × 52" × 28" (208.3 × 132.1 × 71.1 cm). Collection Emily and Jerry Spargel Family

189



190

© Judith Mason | DALRO

190

Judith  
MASON

SOUTH AFRICAN 1938–

*How to Make a Print*, nine concertinaed panels inscribed with the title; executed in 1991  
plywood, oil, polyurethane, transferred glaze and felt  
35 by 193 cm with panels open;  
35 by 39 by 4,5 cm with panels closed

**R20 000 – 30 000**

EXHIBITED

Standard Bank Gallery, Johannesburg, *Judith Mason: A Prospect of Icons*, 2 October to 6 December 2008

LITERATURE

van Rensburg, Wilhelm (Curator). (2008) *Judith Mason: A Prospect of Icons*, Johannesburg: Standard Bank Gallery. Illustrated in colour on page 110.

191

Guy Pierre

**DU TOIT**

SOUTH AFRICAN 1958–

*The Nautical Series, four*

bronze with a brown patina

heights: approximately 32 cm each

(4)

**R40 000 – 60 000**





192

192  
Jurgen  
**SCHADEBERG**

SOUTH AFRICAN 1931–

*Mandela at the Treason Trial*

embossed with the artist's name and chop mark; signed and printed with the artist's name, title and dated on a label adhered to the reverse

black and white photograph  
48,5 by 36,5 cm

**R50 000 – 70 000**



193

193  
Jurgen  
**SCHADEBERG**

SOUTH AFRICAN 1931–

*Mandela in His Cell, Robben Island*

embossed with the artist's name and chop mark; signed and printed with the artist's name, title and dated on a label adhered to the reverse

black and white photograph  
32,5 by 45,5 cm

**R60 000 – 90 000**

Signed by Nelson Mandela and dated  
29.9.99



194

194  
Jurgen  
**SCHADEBERG**

SOUTH AFRICAN 1931–

*Dagga Smokers, Sophiatown*

embossed with the artist's name and chop mark; signed and printed with the artist's name, title and dated on a label adhered to the reverse

black and white photograph  
39 by 58 cm

**R18 000 – 24 000**

195–200 NO LOTS