



The Vineyard Hotel, Conference Centre,
Newlands, Cape Town
Monday 13 October - 2.00pm

Jewellery

Lots 261 - 400

OPPOSITE
Lot 284 Diamond bow brooch

261

Russian commemorative enamel and diamond brooch, the workshop of August Frederik Hollming, late 19th/early 20th century

the ribbon with *later* green enamel, inscribed *АБРЕКЪ*, each ribbon-end with an anchor, suspending a collet-set pear-shaped diamond, *the back pin stamped 'A.H'*, *the collet frame bearing the Fabergé workshop mark*, 34mm wide; cased, *the case probably associated*

R12 000–15 000

NOTES

The *Abrek* was a Russian torpedo cruiser which operated in the Mediterranean Sea from 1899-1904.

262

Victorian 9ct gold locket

oval, the sides with engraved belt-shaped clasps opening to reveal eight oval-shaped glazed picture compartments, the reverse with engine-turned decoration, ring attachment, *length approximately 25mm*

R6 000–8 000

263

Victorian gold and diamond bangle

hinged and designed as a cuff with a ropetwist border, the button designed as a flowerhead claw-set to the centre with an old mine-cut diamond, the button-hole enclosed by rose-cut diamonds, *inner circumference approximately 180mm*, *fitted case by J. Hammon, London*

R20 000–25 000



264

Lady's diamond, sapphire and gold cocktail watch, A Barthelay, Paris

with quartz movement, square with canted corners, the champagne dial with Roman numerals, the bezel set with round brilliant-cut diamonds, with sapphire crown, each shoulder with two square-cut sapphires to an articulated diamond-set u-shaped link, to a double herringbone bracelet, terminating in sapphires with diamond-set foldover clasp, *diameter approximately 17mm*, *length approximately 150mm*

R15 000–20 000





265

265
Diamond, enamel and gem-set pendant/brooch, Carlo Giuliano, late 19th century

formerly a pendant, with *later* frame, set to the centre with a cushion-shaped old-cut diamond, to an openwork enamel frame with alternating stylised leaves and collet-set gems, within blue zigzag borders, blue enamel bale, *minor chips to enamel, maker's mark probably beneath the later frame, width approximately 40mm*

R15 000–20 000

266
Diamond single-stone ring

claw-set to the centre with a round brilliant-cut diamond weighing approximately 1.05 carats, the engraved shoulders with eight-cut diamonds, *size Q*

R45 000–48 000



266

267

Cameo bracelet

the seven oval plaques carved with Diana, Mars, Mercury, Jupiter, Venus, Saturn and Apollo, each representing a day of the week, *accompanied by a descriptive note from Giovanni Apa, Torre del Greco, Italy, length approximately 240mm*

R4 000–6 000

268

Victorian diamond brooch/pendant, 1890s

designed as a twelve-pointed star set throughout with circular old-cut diamonds weighing approximately 1.80 carats, *width approximately 30mm*

R6 000–8 000



268



269

269

Lady's diamond and gold wristwatch, Ebel, first quarter 20th century

the jewelled manual winding lever movement with compensation balance, the double-hinged case with circular silvered dial applied with Arabic numerals, the bezel set with eight-cut diamonds, the shoulders with lug handles, *lacking strap, the case stamped '14ct, 175079', diameter approximately 14mm*

R8 000–10 000



270
part lot



271

***270**

Angel skin coral necklace

composed of salmon-pink angel skin coral beads, measuring approximately 7.20mm, to a white gold ball clasp pavé-set with eight round brilliant-cut diamonds weighing approximately 0.40 carat in total, *length approximately 940mm*; and a pair of angel skin coral stud earrings, *post and butterfly fittings* (3)

R15 000–17 000

***271**

Angel skin coral and diamond dress ring

the collet-set salmon-pink angel skin coral cabochon enclosed by a border of gold c-scrolls highlighted by claw-set round brilliant-cut diamonds weighing approximately 0.40 carat, *size L½*

R15 000–17 000



272

272

9ct gold serpent bangle, Smith & Pepper, Birmingham, 1920s

the engraved serpent's head set with ruby eyes, its head resting on its tail, *maker's initials, inner circumference approximately 260mm*

R5 000–7 000

NOTES

Smith & Pepper was established by Charles Smith (1867-1933) and his uncle Edwin Pepper (1858-1935) in Birmingham in 1899. After going out of business in 1981 their premises at Vyse Street were left untouched, allowing the factory and buildings to be later acquired by the Birmingham City Council and converted into the Museum of the Jewellery Quarter.

***273**

Victorian carved coral bracelet, 19th century

the openwork central plaque carved with a cherub enclosed by leaves and berries, the sides with foliate links united by a tortoise and a dog, *some damage and repairs, length approximately 200mm*

R8 000–10 000



273

274

Unset round brilliant-cut diamond

weighing 1.067 carats

Accompanied by a report from DIA South Africa stating that stone number 14030929 weighing 1.067 carats is I in colour and VVS2 in clarity

R50 000–52 000

274



275

Diamond, pearl and garnet bangle

the hinged openwork frame pavé-set with opposing diamond and garnet borders with a central knife-edge bar claw-set with pearls and garnets, *inner circumference approximately 160mm*

R6 000–8 000

275



276

Ruby and diamond ring

claw-set to the centre with an oval ruby, flanked by two round brilliant-cut diamonds weighing approximately 0.70 carat, *size L*

R5 000–6 000

276



277

French gold-mounted glass box, Paris, late 18th century

circular, the rim mounts with bands of flowers and foliage, *diameter approximately 60mm*

R8 000–10 000

277



278

Cultured pearl necklace

composed of a single row of cultured pearls measuring approximately 7.50 to 8.00mm, to a gold and ruby ball pierced clasp, *length approximately 910mm*; and a pair of pearl stud earrings, *post and butterfly fittings (3)*

R6 000–8 000

278
part lot





279



280



281



282



279

Sapphire and diamond earrings

each collet-set oval-cut sapphire enclosed by a border of round brilliant-cut diamonds, *post and butterfly fittings*; the matching pendant with bale, with an *associated* white gold chain, *length approximately 420mm*; the sapphires weighing a total of approximately 4.52 carats, the diamonds weighing a total of approximately 1.16 carats (3)

R18 000–20 000

280

Diamond half eternity ring

channel-set with eight square-cut diamonds weighing approximately 1.00 carat, *size K½*

R8 000–10 000

281

Diamond single-stone ring

claw-set with a round brilliant-cut diamond weighing approximately 1.53 carats, *size H½*

R95 000–100 000

282

Pair of diamond stud earrings

each tube-set with a round brilliant-cut diamond, weighing 0.68 and 0.76 carats respectively, *post and butterfly fittings* (2)

Accompanied by report number SA 2029515 from EGL Johannesburg stating that the round brilliant-cut diamond weighing 0.68 carats is F in colour and VVS1 in clarity

Accompanied by report number SA 20410191 from EGL Johannesburg stating that the round brilliant-cut diamond weighing 0.76 carats is G in colour and VVS2 in clarity

R50 000–52 000

283

Christian Dior paste brooch, 1960

designed as a stylised flower, the white metal frame claw-set with blue and white stones, *the reverse with applied maker's label and '1960'*, *length approximately 95mm*

R3 000–4 000



283

284

Diamond bow brooch

set with square-, baguette-, round brilliant- and eight-cut diamonds weighing approximately 7.90 carats, width approximately 55mm

R60 000–65 000



284

285

Edwardian black opal, diamond and ruby brooch

the open framework set to the centre with a black opal with green flash, the geometric frame millegrain-set with old-cut diamonds, highlighted with square-cut rubies, width approximately 42mm

R30 000–40 000



285

286

Diamond single-stone ring

claw-set to the centre with a marquise-cut diamond weighing 2.4903 carats, size M½

Accompanied by report number 1114250/4048 from EGL South Africa stating that the diamond weighing 2.4903 carats is G in colour and SI2 in clarity

R168 000–170 000



286

287

Sapphire, diamond and platinum dress ring

claw-set to the centre with an oval mixed-cut sapphire weighing approximately 6.23 carats, flanked by two pendeloque-shaped brilliant-cut diamonds weighing approximately 1.46 carats, size L

R55 000–60 000



287

288

Lady's diamond and white gold cocktail watch, Jaeger-LeCoultre, 1960s

manual back-wind lever movement, the circular silvered dial applied with baton markers and Arabic numerals, the bezel set with twenty round brilliant-cut diamonds, to a textured integrated bracelet with locking clasp, *the reverse stamped '646175A', diameter approximately 11mm, length approximately 150mm*

R10 000–12 000



288



289

289
Diamond, ruby and platinum double-clip brooch, 1950s

each opposing plaque designed as a bouquet of flowers and ribbons, set throughout with eight-, old- and baguette-cut diamonds weighing approximately 13 carats, two of the flowerheads embellished with cabochon rubies, *length approximately 70mm*

R50 000–55 000

290

Ruby and diamond ring, London, 1987

designed as a flowerhead, claw-set to the centre with an oval-cut ruby enclosed by ten claw-set round brilliant-cut diamonds weighing approximately 0.70 carat, *size J*

R10 000–12 000

291

Amber necklace

with graduated faceted beads, *length approximately 1140mm*

R3 000–5 000



290

292

Ruby and diamond pendant/ brooch, 1960s

of stylised floral design, set with brilliant- and eight-cut diamonds weighing approximately 2.75 carats, the ribbons channel-set with square-cut natural and synthetic rubies, *width approximately 35mm*; and a white gold chain, *length approximately 600mm (2)*

R50 000–55 000

293

Cultured pearl necklace

composed of a double row of cultured pearls measuring approximately 6.90 to 7.20mm, to a stylised foliate clasp with textured gold leaves headed by claw-set cabochon garnet berries, *length of shortest row approximately 430mm*

R7 000–9 000



292 part lot

293



294

294

Diamond single-stone ring

claw-set with an old-cut diamond weighing approximately 2.09 carats, between ribbon shoulders, *size L½*

R50 000–55 000

295

Lady's diamond and platinum cocktail watch, 1930s

with manual nickel-lever movement, the square face with canted corners and silvered dial with Arabic numerals, flanked by fan-shaped shoulders millegrain-set with bands of eight-cut diamonds, the crown set with a diamond, to an adjustable fine woven chain and engraved closing clasp, *signed 'GF'*

R30 000–35 000

296

Sapphire and diamond ring

designed as a flowerhead, claw-set to the centre with an oval-cut sapphire, enclosed by twelve round brilliant-cut diamonds, size I

R6 000–8 000

297

Unset round brilliant-cut diamond

weighing 1.5080 carats

Accompanied by report number 140600232/100617 from EGL South Africa stating that the diamond weighing 1.5080 carats is natural Light Fancy Yellow in colour and VVS2 in clarity

R30 000–35 000

298

Pair of diamond earrings

circular, pavé-set with round brilliant-cut diamonds weighing approximately 3.00 carats, post and butterfly fittings (2)

R18 000–20 000

299

Unset cushion-cut diamond

weighing 1.038 carats

Accompanied by a report from DIA South Africa stating that stone number 13090232 weighing 1.038 carats is O in colour and I1 in clarity

R7 000–9 000



295



296



297



300



298



300

Unset round brilliant-cut diamond

weighing 1.14 carats

Accompanied by GIA report number 5151224546 stating that the diamond weighing 1.14 carats is Natural Very Light Yellow-Green in colour and VS2 in clarity

R38 000–40 000

301

Yellow sapphire, diamond and bead necklace

the multiple strands united by a claw-set rectangular yellow sapphire, enclosed by pavé-set round brilliant-cut diamonds weighing approximately 1.10 carats, to a clasp set with white stones, length approximately 460mm

R12 000–15 000



301



302

Sapphire and diamond dress ring

the claw-set oval-cut sapphire weighing approximately 1.80 carats, enclosed by twelve eight-cut diamonds weighing approximately 0.25 carat, size O½

R6 000–8 000

303

Tanzanite and diamond pendant necklace

centring a cushion-cut tanzanite weighing 14.20 carats set to a frame of pavé brilliant-cut diamonds, to a bale collet-set with a princess-cut diamond weighing 0.405 carat, with a fine chain, length approximately 450mm

Accompanied by report number TC 61100146 from EGL South Africa stating that the natural Tanzanite weighing 14.20 carats is blue VIOLET in colour, intense in saturation, EC in clarity and B in finish.

Accompanied by report number 410498 from the Jewellery Council of South Africa stating that the diamond weighing 0.405 carat is SI1 in clarity and H in colour

R60 000–62 000

304

Tanzanite, diamond and platinum ring

claw-set to the centre with an emerald-cut tanzanite weighing 14.30 carats, the shoulders pavé-set with brilliant-cut diamonds weighing a total of approximately 0.33 carat, size M

Accompanied by report number TC 61200209 from EGL South Africa stating that the natural tanzanite weighing 14.30 carats is blue VIOLET in colour, vivid in saturation, EC in clarity and C in finish

R64 000–68 000

305

Lady's diamond and white gold cocktail watch, Omega, 1970s

the rectangular blue enamel dial with silver and enamel baton markers, enclosed by a border of claw-set round brilliant-cut diamonds, to a textured bracelet with adjustable Omega clasp, the dial chipped at 1 o'clock, length approximately 150mm

R20 000–25 000

306

Tanzanite and diamond brooch

designed as a stylised flower centring a cushion-cut tanzanite, weighing approximately 1.09 carats, within foliate ribbons embellished with round brilliant-, baguette- and eight-cut diamonds, length approximately 45mm

R25 000–30 000



303

305

306

307

Lapis lazuli and pearl necklace

composed of six strands, to a clasp collet-set with a cabochon lapis lazuli, the sides set with round brilliant-cut diamonds weighing approximately 0.40 carat, *length approximately 440mm*

R5 000–7 000



308

Diamond single-stone ring

claw-set with a round brilliant-cut diamond weighing approximately 0.97 carat, to a textured band, *size K*

R35 000–40 000



309

Sapphire and diamond bangle

the hinged bangle pavé-set to the front with eight-cut diamonds and nine oval-cut sapphires weighing approximately 4.50 carats, *inner circumference approximately 160mm*

R15 000–20 000



310

Victorian lapis lazuli and pearl star-shaped brooch/pendant

the eight-rayed star set with half pearls, each alternating ray set to a knife-edge bar with collet-set cabochon lapis lazuli, the whole centred by a collet-set cabochon lapis lazuli, *detachable brooch fitting, width approximately 35mm*

R7 000–9 000



311

Pair of lapis lazuli and gold cufflinks

shaped rectangular to a T-bar connector, *length approximately 20mm (2)*

R5 000–7 000





312



313



314



315

312

9ct gold bracelet

composed of articulated crescent-shaped links, length approximately 185mm

R3 000–3 200

313

Pair of gold earrings, Cartier, 1994

each half-hoop earring composed of two rows of opposing hearts, post and clip fittings, stamped 'C40864, Cartier, 1994'; and a ring, en suite, stamped '94861, Cartier, 1994', size N½ (3)

R15 000–18 000

314

18ct rose gold bracelet

the articulated links of stylised floral and foliate form, inner circumference approximately 180mm

R35 000–40 000

315

18ct gold and ruby brooch, Rosas de Portugal, 1940s

composed of two opposing Cs joined by a band of calibre-cut rubies, with rectangular bombé sides, stamped maker's mark, width approximately 55mm

R6 000–8 000

316

A diamond and gold necklace, 1970s

composed of a double row of articulated box links heightened with a stylised flowerhead claw-set with five round brilliant-cut diamonds weighing approximately 0.75 carat, to a conforming chain, length approximately 385mm

R9 000–12 000

317

Freshwater pearl necklace

composed of two graduated rows of freshwater pearls measuring approximately 10.50 to 13.00mm, to a gold, ruby and pearl clasp in the form of a flowerhead, *length of shortest row approximately 450mm*

R20 000–25 000



318

Pearl, ruby and diamond dress ring, designed by W Meyer, Windhoek

designed as a flowerhead, claw-set with rubies and diamonds to a basket frame, *size J½*

R5 000–7 000

318

319

18ct gold bracelet

composed of six herringbone chains set to a circular clasp claw-set with red and blue stone flowerheads, the tassel terminal with blue stones, *length approximately 225mm*

R22 000–24 000



320

A ruby and diamond floral spray brooch, 1970s

each flowerhead claw-set with cabochon rubies and diamonds, the foliage and ribbons pavé-set with further round brilliant- and eight-cut diamonds, the diamonds weighing a total of approximately 1.50 to 1.70 carats, *length approximately 61mm*

R22 000–25 000





321

321

Emerald and diamond dress ring

claw-set to the centre with a brilliant-cut diamond weighing approximately 0.50 carat, enclosed by ten claw-set round emeralds, to a plain band, *size L½*

R6 500–7 000



322

322

Green diamond dress ring

claw-set to the centre with a cut-cornered rectangular modified brilliant-cut diamond weighing 4.65 carats, enclosed by claw-set diamonds, the shoulders and shank set with further diamonds, *size M½*

Accompanied by GIA report number 1142779834 stating that the diamond weighing 4.65 carats is fancy deep bluish green in colour, artificially irradiated and I2 in clarity

R40 000–45 000

323

Emerald and pearl necklace

the graduated carved emeralds interspersed with cultured pearls, to a white stone clasp, *length approximately 510mm*; and a bracelet, *en suite, length approximately 190mm (2)*

R15 000–20 000



323

324

Cultured pearl necklace with diopside and diamond pendant

claw-set to the centre with a diopside suspending a pearl, headed to the right by a tube-set round brilliant-cut diamond weighing approximately 0.45 carat, to a string of fifty cultured pearls measuring approximately 7.50mm, *length approximately 470mm*; and a pair of mabé pearl, diamond and diopside earclips, *en suite* (3)

R15 000–20 000

325

Sandawana emerald and diamond brooch, 1970s

the stylised bow claw-set with rectangular and square-cut emeralds, highlighted with claw-set round brilliant-cut diamonds in the form of flowerheads, *width approximately 66mm*

R20 000–22 000

326

Emerald and diamond dress ring, 1970s

in the form of a flowerhead, claw-set to the centre with an oval-cut emerald weighing approximately 0.80 carat, enclosed by claw-set round brilliant-cut diamonds weighing approximately 2.00 to 2.10 carats, to bifurcated shoulders, *size N*

R15 000–20 000

327

Emerald and diamond dress ring

designed as a flowerhead claw-set to the centre with an oval-cut emerald, enclosed by ten round brilliant-cut diamonds weighing approximately 1.05 carats, *size L½*

R10 000–12 000



324

325

326

327



328

328

Lady's diamond and gold cocktail watch, Rolex, 1950s

the seventeen jewel nickel-lever escapement stamped 'Rolex', the circular champagne-coloured dial with applied dot and baton markers, bezel-set with twelve round brilliant-cut diamonds, set to a double curb-link chain, with locking clasp, *the case stamped 'Genève Suisse Rolex 18K07500, diameter approximately 12mm, length approximately 150mm*

R12 000–15 000



329

329

Diamond single stone ring

claw-set with a princess-cut diamond weighing approximately 1.10 carats, to a platinum band, *size J½*

R45 000–50 000



331

330

Diamond and gold bangle, Charles Greig

the hinged bangle with a two-tone front pierced with a zigzag design with tube-set round brilliant- and eight-cut diamonds weighing approximately 7.20 carats, *inner circumference approximately 175mm*

R50 000–60 000



330



332

331

Edwardian diamond, seed pearl and platinum brooch

octagonal, with a circular lattice-work frame set to the centre with an old-cut diamond, enclosed by seed pearls and old- and rose-cut diamonds, *one stone lacking, width approximately 28mm*

R7 000–9 000

332

Marquise-cut diamond pendant

weighing 2.8330 carats set to an 18ct gold mount, *length approximately 36mm*

Accompanied by report number 140702679/520976 from EGL South Africa stating that the diamond weighing 2.8330 carats is R in colour and VVS2 in clarity

R90 000–95 000

333



334



335



337



333

Diamond enhancer

designed as a flowerhead, claw-set with round brilliant-, marquise- and eight-cut diamonds weighing approximately 2.50 carats, *width approximately 30mm*

R12 000–15 000

334

Pair of pearl and diamond earrings

set to the centre with a pearl within a surround of claw-set old-cut diamonds weighing approximately 1.60 carats, *post and butterfly fittings (2)*

R4 000–5 000

335

Diamond brooch, 1950s

rosette-shaped, millegrain-set with eight- and brilliant-cut diamonds, *width approximately 35mm*

R8 000–10 000

336

18ct gold curb-link chain

composed of alternating yellow and white gold textured links, *length approximately 415g*

R14 000–16 000

337

Cultured pearl necklace

composed of four rows of cultured pearls measuring approximately 5.50 to 6.00mm, to a gold and diamond foliate clasp highlighted with ten brilliant-cut diamonds weighing approximately 0.40 carat, *length of shortest row approximately 265mm*

R6 000–8 000

336



338



338

Diamond ring

collet-set to the centre with a pear-shaped diamond weighing 1.1800 carats, enclosed by pavé-set round brilliant-cut diamonds weighing approximately 3.00 carats, *size L*

Accompanied by report number 130902191/95735 from EGL South Africa stating that the diamond weighing 1.1800 carats is I in colour and VS2 in clarity

R40 000–42 000

339

Diamond bangle

the hinged rectangular tapering bangle claw-set to the top with five diamonds weighing approximately 0.35 carat, *width approximately 60mm*

R5 000–7 000

340

Diamond line bracelet

the articulated bracelet box-set with round brilliant-cut diamonds weighing approximately 0.85 carat, *length approximately 187mm*

R5 000–7 000

342



340

341

341

Tourmaline line bracelet

the articulated bracelet box-collet-set with square-cut tourmalines, with textured sides, *length approximately 174mm*

R22 000–25 000

342

Diamond single-stone ring

claw-set to the centre with a round brilliant-cut diamond weighing approximately 0.85 carat, enclosed by a pierced oval frame, *size H*

R14 000–16 000

343

Lady's gold watch, Movado, 1970s

manual winding lever movement, the rounded rectangular gold dial applied with baton markers, with integrated textured woven strap and sliding clasp stamped '59085', *width approximately 14mm, length approximately 160mm*

R10 000–12 000

343



344



344

Cultured pearl bracelet, designed by W Meyer, Windhoek

with three rows of cultured pearls measuring approximately 3.80 to 4.20mm strung in a floral design, to a textured gold clasp collet-set with an emerald-cut tourmaline weighing approximately 2.50 carats, *length approximately 180mm*

R10 000–15 000

345



345

Tourmaline dress ring

collet-set with a rectangular step-cut tourmaline weighing approximately 7.45 carats, *size L½*

R15 000–20 000

346



346

Pair of gold coin cufflinks

each collet-set with an 1894 Kruger 1 pond gold coin to a T-bar connector, *diameter approximately 23mm (2)*

R9 000–12 000

347 part lot



347

Cultured pearl and tourmaline necklace

composed of a single strand of cultured pearls measuring approximately 7.00mm, set to a rectangular step-cut tourmaline weighing approximately 6.50 carats, *length approximately 760mm*; and a pair of pearl stud earrings, *post and butterfly fittings (3)*

R20 000–25 000

348

**Diamond and platinum
single-stone ring**

claw-set with a round brilliant-cut diamond weighing approximately 1.04 carats, *size 1½*; and a platinum wedding band, *size 1½* (2)

R80 000–85 000

348 part lot

349

Diamond and gold bracelet

composed of two claw-set round brilliant-cut diamonds weighing approximately 0.20 carat, set to a herringbone chain, *length approximately 195mm*

R7 000–9 000

349

350

351

Pair of mabé pearl earrings

each collet-set to a stepped tri-colour gold border, *post and clip fittings* (2)

R9 000–12 000

351

**Pair of diamond and
gold earclips, Vendorafa
Lombardi, Valenza, 1960s**

each of foliate design, the textured leaves highlighted with five round brilliant-cut diamonds weighing approximately 0.50 carat, *applied maker's mark, clip fittings* (2)

R7 000–9 000

351

352

**Diamond and gold brooch,
1960s**

designed as a flowerhead with textured leaves and highlighted with twelve claw-set brilliant-cut diamonds, weighing approximately 0.75 carat, *French assay marks, width approximately 40mm*

R10 000–12 000

353

**15ct gold figaro-link muff
chain**

length approximately 1640mm

R7 000–9 000

352

354

Diamond single-stone ring

claw-set with a round brilliant-cut diamond weighing approximately 4.50 to 5.00 carats, size P

R100 000–110 000



355

Pair of diamond earclips

of oblong outline, collet-set to the centre with pear-shaped diamonds weighing approximately 0.75 carat, enclosed by pavé-set round brilliant-cut diamonds weighing approximately 2.00 carats, clip fittings (2)

R15 000–17 000



356

Lady's diamond, ruby and gold cocktail watch, Chopard, 1970s

jewelled nickel-lever movement, the cream enamel dial with Arabic numerals, the bezel pavé-set with eight-cut diamonds, the shoulders collet-set with two pear-shaped rubies enclosed by diamonds, to a woven strap and jewelled Chopard locking clasp, the case stamped 'G3836, 1664845150', width approximately 10mm, length approximately 160mm

R10 000–12 000



357

Cultured pearl necklace

composed of three rows of pearls measuring approximately 6.00mm, to a gold, diamond, ruby and sapphire clasp centred by a pear-shaped pearl, length of shortest row approximately 440mm; and another two-strand example, each pearl measuring approximately 7.00mm, length of shortest row approximately 510mm; the clasps can be joined to form a necklace of opera length (2)

R40 000–45 000





358

Victorian emerald, diamond and gold bracelet, 1880s

claw-set to the centre with an old-cut diamond and four cushion-cut emeralds, the open frame surmounted by a pair of tiger paws, to an engraved articulated brick-link bracelet, the reverse with locket, *length approximately 170mm*

R12 000–15 000

359

Jade, tourmaline and gold pendant

composed of two tourmaline-eyed lizards heading a carved jade plaque, the openwork frame collet-set with four cabochon-cut tourmalines, the bale fixed, *width approximately 49mm*

R6 000–8 000



360

Greek ruby, emerald and gold mask ring

designed as a mask, with claw-set emerald eyes, the mouth collet-set with a cabochon star ruby, *size L*

R12 000–15 000

361

9ct gold necklace, German

composed of a graduated articulated textured fringe, *length approximately 450mm*

R4 000–5 000

362

Chinese jade pendant

the mottled apple-green oval-shaped pendant carved to the front with a dragon amongst clouds, and to the reverse with a *feng-hu* bird, length approximately 51mm

R6 000–8 000



363

18ct gold bracelet

of textured design, some distortion, length approximately 185mm

R22 000–24 000



364

Jade and gold bracelet, 1970s

composed of four oval jade links with textured gold mounts united by lozenge-shaped connectors, length approximately 200mm

R2 500–3 000



365

18ct gold bracelet

woven in relief with scenes of Classical inspiration, the clasp with zig-zag detail, length approximately 195mm

R35 000–40 000



366
part lot



367

366

Citrine and silver bracelet

the graduated articulated bracelet collet-set with faceted oval citrines, to a rectangular clasp, *length approximately 197mm*; and a ring, *en suite*, size M½ (2)

R4 000–6 000

367

Pair of smoky quartz and diamond earrings

claw-set with a marquise-cut smoky quartz with a claw-set diamond fringe, *hoop fittings* (2)

R4 000–5 000

368

Pair of feldspar cufflinks

double-sided, each collet-set cabochon feldspar connected by a chain link, *diameter approximately 130mm* (2)

R5 000–7 000

369

Dutch silver and agate brooch, maker's initials J.FdJ, (1906–1953)

the pierced frame with engraved flowerheads and foliage, collet-set with a cabochon agate, *length approximately 820mm*

R800–1 000



369

370

Lady's diamond and platinum cocktail watch, 1930s

jewelled manual winding anchor lever movement, the rectangular silvered dial with Arabic numerals and blue-steel hands, the bezel and articulated shoulders millegrain-set with diamonds, to a double cord strap, with 9ct gold folding clasp, *one diamond missing*, *width approximately 100mm*, *length approximately 160mm*

R8 000–10 000

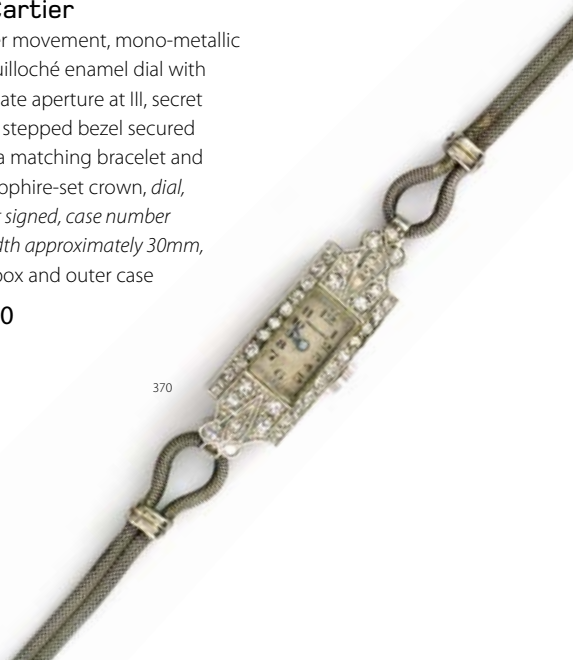
371

Gentleman's bi-metallic 'Santos' wristwatch, Cartier

jewelled nickel lever movement, mono-metallic balance, silvered guilloché enamel dial with Roman numerals, date aperture at III, secret signature at VII, the stepped bezel secured by eight screws to a matching bracelet and deployant clasp, sapphire-set crown, *dial, case and movement signed*, *case number '2319768650CD'*, *width approximately 30mm*, with presentation box and outer case

R12 000–15 000

370





371



372



373 part lot

372

Gentleman's 'Tank Solo' wristwatch, Cartier

jewelled nickel lever movement, mono-metallic balance, white dial with Roman numerals, secret signature at VII, satin-finished screwed down case, sapphire-set crown, Cartier black crocodile leather strap, stamped 'Cartier 7808613992' to the reverse, width approximately 18mm, with presentation box

R12 000–15 000

373

French silver medal, Jean Puiforcat, 1930s

the front cast with an athlete, diameter approximately 2,5cm; and a French silver-gilt medallion, designed by Jean Puiforcat, the front cast with a praying Madonna and the words 'GRATIA PLENA', diameter approximately 2,1cm (2)

R2 000–3 000



374



375

374

Diamond ring

claw-set to the centre with four round brilliant-cut diamonds, the triple shank set with marquise-cut diamonds weighing approximately 3.50 carats, size S½

R70 000–72 000

375

Cultured pearl necklace

composed of a double row of cultured pearls measuring 9.00 to 9.50mm, to an oval clasp pavé-set with single-cut diamonds weighing approximately 2.82 carats, the front centred by a tube-set round brilliant-cut diamond weighing approximately 0.40 carat, the reverse centred by three single-cut diamonds, each flanked by four baguette-cut diamonds, length of shortest row approximately 380mm

R30 000–40 000



376



377

***376**

Coral branch necklace

some loss, length approximately 600mm

R1 500–2 000

377

Diamond ring

pavé-set with thirty-three round brilliant-cut diamonds weighing approximately 2.00 carats, size J½

R15 000–17 000

378

Victorian diamond, ruby, pearl and chalcedony bird brooch, 1890s

designed with three birds perched on branches viewing a nest, each embellished with old-cut diamonds, rubies and carved chalcedony wings, tip of one bird's tail missing, width approximately 50mm

R15 000–20 000



378

379

Lady's gold 'Meister' wristwatch, Vacheron & Constantin, circa 1969

the twenty jewel nickel-lever manual movement with mono-metallic balance, the square-cased champagne dial applied with black enamel baton markers, integrated textured bracelet strap with locking clasp, the strap with repairs, case, dial and movement signed, the movement stamped 'K.1050/B', the case stamped '441177' and '7150', width approximately 23mm

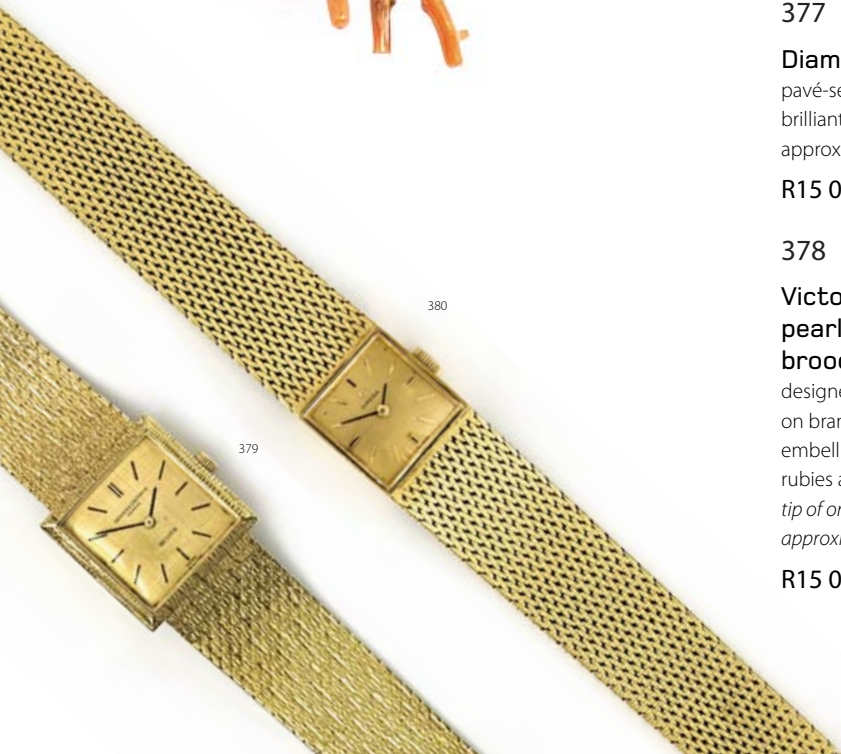
R15 000–20 000

380

Lady's gold wristwatch, Omega, 1970s

seventeen jewels, nickel-lever movement, square case, the champagne dial applied with gold and black enamel baton markers, the integrated textured bracelet with locking clasp, the movement stamped 'Omega 484, 17 jewels, 27300500', the case stamped '8161705891', approximately 14mm square, length approximately 160mm

R14 000–16 000



380

379



381

9ct gold charm bracelet
suspending fourteen charms, *length*
approximately 192mm

R6 000–7 000

382

9ct gold charm bracelet
suspending three 9ct gold charms with heart-
shaped padlock clasp, *length approximately*
200mm

R3 000–3 200

383

Bakelite necklace, 1930s

the cream cable-link chain suspending eleven
charms, including three apples, two skittles and
an acorn, in shades of orange, amber, red and
olive green, *length approximately 440mm*

R2 000–2 500

381

384

Pair of bakelite dress clips,
American, 1930s

carved as pine cones, *length approximately*
42mm; three lucite and bakelite dress clips,
length of the longest approximately 55mm; and
a bakelite and metal-mounted brooch, *width*
approximately 50mm (6)

R2 000–2 500

385

Diamond ring, 1960s

composed of ten round brilliant-cut diamonds
weighing approximately 1.50 carats, claw-set
to an irregular framework with bifurcated
shoulders, *size N½*

R8 000–8 500

386-400 No Lots



385

383

