



The Vineyard Hotel, Conference Centre,  
Newlands, Cape Town  
Monday 13 October - 11.30am

**Continental and Oriental  
Furniture, Ceramics, Silver  
and Glass including  
three Collections of Chinese Jade**

**Lots 111–260**

OPPOSITE

Lot 185 A 19th century Chinese carved cinnabar lacquer box and cover,  
Qing Dynasty

111

**A Spanish iron-mounted  
parcel-gilt bone and walnut  
vargueño, 17th century, on  
later stand**

the front and sides with cream velvet-lined iron mounts, the sides applied with iron carrying-handles, the fall-front with hasp lock and four bolts to the sides and enclosing an architectural interior fitted with thirteen drawers and a pair of cupboards, the *later* stand with a pair of Santiago shell lopers above turned baluster columns joined by a galleried stretcher on a trestle base, *minor restorations*, 148cm high, 113,5cm wide, 41cm deep

R100 000–120 000





112

112

**A Dutch mahogany and ebonised longcase clock, late 18th/early 19th century**

the 30,5cm gilt face signed *William Bramer Faecit Campen 1711*, with Roman numerals, silvered chapter ring, date aperture and phases of the moon, *later* foliate spandrels, pierced hands, striking on a double bell, the door with oval lenticle, on a plinth base, the bell top hood surmounted by a giltwood figure of Atlas flanked by a pair of trumpeting angels, on *later* block feet, *restorations*, 278cm high

R20 000–30 000

113

**A Dutch oak draw-leaf table, late 18th/early 19th century**

the rectangular crossbanded plank top above a moulded frieze with carved scalloped border, on block and ring-turned bulbous legs, block feet joined by stretchers, *with restorations*, 78cm high, 213,5cm long fully extended, 75cm wide

R20 000–30 000



113

114

**An assembled part set of Dutch-decorated Leeds creamware, circa 1775–1780**

each painted in iron-red, green and yellow with a commemorative double portrait of Prince William V and Princess Frederica Sophia Wilhelmina of Orange flanking an orange tree, comprising: a teapot with branch-form handle, a two-handled covered sugar bowl, a milk jug, six plates with wavy borders numbered 1-6 with inscription, six tea bowls, six saucers and four smaller tea bowls, *chips, cracks, repairs, some loss, the teapot 9,5cm high (25)*

R50 000–70 000

115

**A pair of Helena Wolfsohn vases and covers, Dresden, late 19th century**

after the Meissen model by Michel Victor Acier, of urn form with angular upright handles, painted with two figural harbourside scenes within a gilt-line foliate cartouche against a dark blue ground, raised on a circular socle and square base, the pierced covers with wreath-and-ribbon finial, *one finial restored, underglaze-blue mark, 30cm high (2)*

R8 000–10 000

116

**A Samson famille rose bowl, Paris, 19th century**

painted in the Chinese palette with sprays of flowerheads, the rims with spearhead borders in iron-red and gilt, the exterior similarly decorated with cell-diaper borders and gilt rims, *pseudo Chinese mark, 12,3cm high, 28,5cm diameter*

R6 000–8 000



114



115



116



117

117

**A Samson armorial tankard,  
Paris, 19th century**

cylindrical, painted in the Chinese  
palette with an armorial enclosed by  
enamel flowerheads within foliate and  
spearhead borders, gilt highlights, 12cm  
high

R1 200–1 500

118

**A singing nightingale  
automaton, 19th century**

the nightingale on a brass perch inside  
a birdcage with *later* carpeted base,  
the circular base moulded in relief with  
acanthus-leaf and c-scroll motifs, the  
mechanism with three settings, on  
three *later* feet, with carrying-handle,  
*the bird with some distress*, 51,5cm high

R10 000–12 000

119

**A pair of Italian walnut and  
marquetry comodini, in  
the manner of Maggiolini,  
18th/19th century**

each with rectangular top above a  
cupboard enclosing a shelf, on square-  
section tapering legs, *restorations*, 78cm  
high, 55,5cm wide, 39cm deep (2)

R60 000–70 000



118



119



120

**120**  
**A Louis XVI/Transitional style marble-topped kingwood, parquetry and marquetry gilt-metal mounted commode, early 20th century**

the rectangular serpentine mottled grey and cream marble top above three frieze drawers with a pair of conforming drawers below, inlaid with a marquetry panel with an urn, a basket of fruit and ribbons, canted corners on cabriole legs with brass paw sabot feet, *the marble top restored, 86cm high, 117,5cm wide, 58,5cm deep*

**R12 000–15 000**

**PROVENANCE**

Miss Hilda Holt  
 The Contents of Nederberg, Cape Town, 19th and 20th April 1982, lot 27.



121

**121**  
**A Louis XV style walnut and marquetry desk, late 19th/early 20th century**

the gilt-metal-mounted serpentine top inset with a gilt-tooled brown leather writing surface enclosed by masks and satyrs above a frieze drawer, on cabriole legs, the feet with sabot mounts, *72,5cm high, 136,5cm wide, 70cm deep*

**R15 000–18 000**

**122**  
**An Italian ebonised and bone-inlaid Savonarola armchair, 19th century**

the shaped arched back inlaid with a profile bust of a monk flanked by masks, wings and leafy scrolls, square-section arms, curved side supports, solid seat, on conforming X-frame base, *some bone loss*

**R4 000–6 000**



122



123

**123**  
**A pair of Austro-Hungarian silver Sabbath candlesticks, Hermann Südfeld, Vienna, 1872-1922, .800 standard**

each of baluster outline, engraved with foliate motifs and initials, *loaded, 32,5cm high (2)*

**R30 000-40 000**

**124**  
**A pair of silver-plate Sabbath candlesticks**

each of baluster outline, applied with foliage, the base with lattice and shell borders on four scroll feet, *30cm high (2)*

**R10 000-12 000**



124

**125**  
**A pair of Russo-Polish Sabbath candlesticks, Izrael Szekman, St Petersburg, 1882-1899**

each triple knopped stem moulded in relief with flowerheads, berries and foliage, to a stepped domed foot raised on four pierced vine feet, *the sconces with dents, wear and oxidisation, 1085g all in, 39cm high*

**R20 000-25 000**



125



126

**A Russian silver and niello beaker, assay master AK, Moscow, 1842**

engraved with a rondel of the statue of Peter the Great in St Petersburg, the reverse with an architectural view enclosed by a foliate ground, *dents and gilding worn*, 130g, 8,8cm high

R10 000–12 000

127

**A Russian silver Fiddle Pattern soup ladle, Gustav Alexander Sohlman, assay master Ivan Yefimovich Yevstigneyev, St Petersburg, 1883**

*bowl with minor dents*, 140g

R4 000–6 000

128 No lot

129

**A Russian silver tankard, 1908–1926**

modelled in relief with a troika, the harp-shaped handle moulded with stylised foliage, silver-gilt interior, 210g, 13,2cm high

R5 000–7 000



126



127



129



130



131

130

**An Austrian silver-gilt cigarette case, Vienna, post 1922, .900 standard**

rectangular, with engine-turned decoration, hinged cover with foliate borders, with gilt oval cartouche engraved with 'W', gilt interior, stamped 145, 150g all in, 10,3cm wide

R3 000–4 000

131

**A Danish silver teapot, Frederik Vilhelm Albertus Gundorph, (1825 - 1894), Assens**

ovoid, with dragon-headed spout, leaf-capped handle, on a circular foot, the hinged cover with rose-head and leaf finial, 440g all in, 13cm high

R8 000–10 000

132

**A Dutch silver cruet in the form of a pheasant, Gebr Niekerk, Groningen, 1923, .833 standard**

realistically modelled with inset glass eyes, detachable head, pierced detachable inner cover, 330g, 17cm high, 42,5cm wide

R7 000–9 000

\*133

**A pair of French novelty silver-plate and ivory newspaper clips, early 20th century**

one engraved 'MADAME', the other 'MONSIEUR' (2)

R1 500–2 000



132



133



134

134

**A pair of Danish silver candlesticks, Gran & Laglye, 1928**

the body lightly hammered with beaded borders, the circular dish on three conforming feet, the centre applied with a shaped cylindrical stem moulded in relief with a band of stylised leaves, with detachable flowerhead sconce, 445g all in, 15cm high (2)

R6 000–8 000



135

**A Georg Jensen silver tea and coffee service, designed in 1933 by Johan Rohde, post 1945, number 787**

comprising: a two-handled tray, teapot, coffee pot, hot water jug, covered sugar bowl and milk jug, each with hammered surface, the teapot, coffee pot and hot water jug with shortened spouts and ebony handles, *stamped Georg Jensen, maker's design mark for Johan Rohde, number 787, 4040g all in, the tray 52,5cm wide over handles, the hot water jug 17cm high (6)*

**R150 000–200 000**

**LITERATURE**

*cf. Janet Drucker. (1997) Georg Jensen: A Tradition of Splendid Silver, Atglen, PA: Schiffer. Page 194*

136

**A Georg Jensen Continental  
(Antik) pattern assembled  
set of silver cutlery,  
designed by Georg Jensen in  
1906, various dates**

comprising: twelve hors d'oeuvres knives, twelve hors d'oeuvres forks, twelve soup spoons, twelve fish knives, twelve fish forks, twelve dinner knives, twelve dinner forks, twelve butter knives, twelve cheese knives, fifteen dessert spoons, fourteen dessert forks, twelve cake forks, twelve teaspoons, twelve coffee spoons, a bottle opener, two cream spoons, four serving spoons in sizes, a cake fork and lifter, a meat fork, a pair of serving forks, two ladles in sizes, six salt spoons, four salts, one serving spoon engraved 'A.P. 10.4.27', 6180g all in (197)

**R80 000–100 000**

137

**A French silver-plate  
tea and coffee service,  
designed by Jean Puiforcat  
in 1937, Puiforcat, 1940s**

cylindrical with moulded double footrim, the sides applied with angular Brazilian rosewood ebonised handles, comprising: a teapot, coffee pot, covered sugar bowl and two-handled milk jug, the coffee pot 11cm high (4)

**R30 000–40 000**

**LITERATURE**

cf. Françoise de Bonneville. (1986) *Jean Puiforcat*, Paris: Éditions du Regard. Page 132, where a silver example is illustrated.



136  
part lot



137

138

**A German jasper, shagreen and silver-mounted cigarette box, M. Möckel, .830 standard, 1930s**

rectangular, the hinged cover centred by a conforming collet-set jasper plaque enclosed by geometric panels of brown and cream shagreen, the bombé-shaped silver body raised on four square feet, *stamped maker's mark, 3,5cm high, 13,2cm wide*

R4 000–6 000

139

**An Art Deco shagreen and silver triple-frame box**

rectangular, the hinged cover in three sections each centred by a glazed compartment enclosing marbled paper, on four square-section feet, *stamped 'Bronze & Sterling, 240', 4,8cm high, 24,2cm wide*

R12 000–15 000

140

**An Art Deco silver-mounted shagreen and gilt-metal cigarette case**

hinged rectangular, inlaid with a cream-coloured shagreen band, with pink and blue triangular shagreen borders, *stamped '969', 10cm wide*

R3 000–4 000



138



139



140



141



142

\*141

**An Art Deco alligator, shagreen and ivory silver-mounted cigarette box**

sarcophagus-shaped, the hinged cover inset with a rectangular ivory plaque enclosed by alternating triangular panels of shagreen and alligator, the sides applied with black alligator panels, on shallow bracket feet, *hallmarks worn, 7cm high, 17cm wide*

R7 000–9 000

\*142

**An Art Deco shagreen and ivory cigarette box**

rectangular, the shagreen body with ivory borders, *7,2cm high, 19,7cm wide*

R6 000–8 000

143

**A Christofle silver-plate  
sauce boat and ladle  
designed by Christian  
Fjerdingsstad (1891-1962)**

modelled as a stylised swan when  
combined, raised on an oval foot, 5,5cm  
high

R6 000-8 000

144

**A set of twelve Christofle  
Malmaison pattern silver-  
plated underplates**

each with stiff-leaf and beaded border,  
30,5cm diameter; and a Christofle  
silver-plated stand, with engine-turned  
decoration, wooden base, on four  
ebonised feet, 24cm diameter (13)

R12 000-15 000

145

**A silver and macassar-  
mounted sauceboat, ladle  
and stand, maker's mark 'K'**

the bulbous-shaped sauceboat with  
macassar thumbpiece and hammered  
interior, with double-lipped ladle and  
shaped oval stand, stamped 'K S925 X',  
690g all in, the sauceboat 11,5cm high, the  
stand 21cm wide (3)

R6 000-8 000



143



144



145

146



147



148



part lot

146

**A pair of Danish silver dishes,  
CC Hermann, mid 20th century**

each circular with beaded border, 415g all in,  
17cm diameter (2)

**R6 000–8 000**

147

**A Danish sterling silver bowl,  
designed by Sigvard Bernadotte  
for Georg Jensen**

the centre with a stylised dahlia, engraved  
'Sigvard', stamped Georg Jensen, Sterling, 990A,  
280g, 17,5cm diameter

**R4 000–6 000**

148

**A Georg Jensen silver Acorn  
pattern flatware service, mid  
20th century, designed by  
Johan Rohde in 1915**

comprising: eight soup spoons, eight fish knives,  
eight fish forks, eight dinner forks, eight dinner  
knives, eight dessert knives, eight dessert forks,  
eight dessert spoons, seven coupe spoons and a  
pair of butter knives, 2600g all in (73)

**R55 000–60 000**

149

**An assembled Royal Copenhagen  
'Blue Fluted Plain' pattern dinner  
service, 20th century**

comprising: eighteen coupes, eighteen coupe  
plates, eighteen hors d'oeuvres plates, eighteen  
dinner plates, eighteen side plates, four platters  
in sizes, a sauceboat-on-stand, a circular bowl, a  
pair of tureens and covers, eight butter dishes,  
seventeen small saucers, nineteen coffee cups,  
ten tea cups, thirty saucers, a coffee can, two  
further tea cups and four saucers; a miscellaneous  
group of Royal Copenhagen 'Blue Fluted Half  
Lace' pattern wares, comprising: a tureen and  
cover, an oval platter, a small dish, a sauceboat-  
on-stand, two side plates, five tea cups, fourteen  
saucers, underglaze-blue wave mark, green printed  
factory mark and numerals, the largest platter 41cm  
long; and four Villeroy & Boch blue and white  
silver-plate mounted wine coasters (218)

**R40 000–50 000**



149  
part lot

Lots 150-152 were part of a larger collection of Martin Brothers stonewares assembled at the end of 19th/early 20th century. See illustration from original log book.

150

**A miniature Martin Brothers stoneware aquatic ewer, 1887**

square with indented sides painted with grotesque fish amongst weeds, with shortened spout and loop handle, *inscribed 'Martin Bros, London & Southall, 3-1887', 9,5cm high*

R15 000–20 000

151

**A miniature Martin Brothers stoneware aquatic ewer, 1887**

the flattened ovoid body with elongated neck painted with grotesque fish, the side with loop handle, *inscribed 'Martin Bros, London & Southall, 3-1887', 11cm high*

R15 000–20 000

152

**A miniature Martin Brothers stoneware aquatic bottle vase, 1907**

painted with four grotesque fish, *inscribed 'Martin Bros, London & Southall, 4-1907', 10cm high*

R10 000–15 000



150



151



152



153

**A Moorcroft Claremont pattern two-handled vase, designed in 1903**

decorated with a border of toadstools in shades of pink and yellow against a mottled green and blue ground, raised on a circular foot, *restored, impressed mark and numerals and painted signature*, 26,2cm high

R10 000–15 000

154

**A Louis Wain 'The Lucky Haw-Haw Cat' pottery spill vase, circa 1920**

Painted in green, blue and red with black highlights, *signed 'Louis Wain, Made in England, Rd No 638314', maker's mark for 'Masonic Pottery Max Emanuel & Co', 13cm high*

R10 000–15 000

155

**A Louis Wain 'The Lucky Futurist Cat' pottery spill vase, circa 1920**

Painted in green, yellow, red and blue with black highlights, front right paw raised, *signed 'Louis Wain', printed and impressed 'Made in England', impressed 'Rd No 637134', painted maker's mark for 'Masonic Pottery Max Emanuel & Co', paper label, 13cm high*

R10 000–15 000

156

**A pair of Clarice Cliff 'Original Bizarre' bottle vases**

shape number 3, the ovoid bodies decorated with a band of triangles in blue, orange, green and yellow, *impressed '3', gilt painted factory mark, 29cm high (2)*

R10 000–15 000



153



156



154

155



158

157

**A Clarice Cliff 'Fragrance' pattern plate**

Painted with a stylised tree and orange and yellow flowers, *impressed numerals, black painted and printed factory mark, 25,5cm diameter*

R1 500–2 000

158

**A Clarice Cliff 'Bizarre Garland' pattern vase**

shape number 356, ovoid with ribbed neck, the shoulders painted with stylised flowers and foliage, *impressed '358', black-painted and printed factory mark, 20,2cm high*

R4 000–6 000

159

**A Luc Lanel for Christofle  
*dinanderie* vase, circa 1925**

ovoid, gilt and bronze patinated metal,  
with geometric motifs, 26,5cm high

R8 000–10 000

160

**A French *dinanderie* two-  
handled vase and cover,  
M Poincet, 1930s**

the front and reverse with a stylised  
design of two ladies in 17th century  
attire each holding a fan, the domed  
base decorated with waves, the cover  
with birds, the sides applied with  
handles, headed by ball finials, *signed*  
*M. POINCET, 'MADE IN FRANCE'; dents,*  
*oxidisation, 42,5cm high*

R12 000–15 000

161

**An Art Deco palissandre  
veneered and ebonised  
table, 1930s**

the rectangular top with rounded  
corners above a frieze drawer flanked  
by open sides and raised on carved  
ovoid shaped supports, on tapering  
fluted legs and stop feet, 73cm high,  
115,5cm wide, 58cm deep

R15 000–20 000





162

162

**Goldscheider 'Revue' figural group,  
designed by Stefan Dakon (1904–1992)**

modelled as a pair of dancing girls, with yellow collars and anklets, each lifting her petal-shaped hem and posing barefoot on a lozenge-shaped base, restorations, impressed 'Dakon', the base with painted factory mark, signed with the initials 'SD', impressed '5612 133 4 03', 37,5cm high

**R30 000–40 000**



163

163

**An Art Deco silver-plate and shagreen  
centrepiece**

the circular stepped dish raised on three angular supports enclosing a stepped cylinder with bands of shagreen, to a conforming part-beaded base centred by an ebonised ball, oxidisation, 35,5cm high

**R15 000–20 000**

164

**An Art Deco 'Ric and Rac'  
painted chrome table light**

the circular frosted globe flanked by Ric, the fox terrier, and Rac, the Scottish terrier, wearing red collars, on a shaped plinth raised on four tubular feet, *14,5cm high*

R4 000–6 000

165

**A Breitling chrome easel-  
back mirror**

with rectangular mirror plate, the easel support in the form of a Spitfire aircraft, the outer frame stamped 'BREITLING'; *28,5cm high*

R3 000–5 000

166

**A Bakelite musical trinket  
box, 1930s**

the cylindrical russet body of ribbed outline, raised on three ebonised ovoid feet with brass caps, the cover with ovoid finial, *11cm high*; five bakelite boxes, in shades of caramel, olive green, fire engine red and agate, with ribbed sides, black covers and bases, *the tallest 7,7cm high*; and two further examples, one with smooth toffee-coloured body, the other with ribbed dark olive green body, with cream covers and bases, *the taller 7,8cm high* (8)

R15 000–18 000



164



165



166

167

**A Clément Massier lustre vase, late 19th/early 20th century**

of double gourd form, the iridescent craquelure body decorated with stylised flowers and foliage, *signed 'M CLEMENT MASSIER GOLFE-JUAN (am), impressed maker's mark, 36,5cm high*

R25 000–35 000



167

168

**Five Vetri Della Arte (Vedar) goblets, circa 1925**

each enamelled with a frieze of winged putti playing with garlands of flowers, *engraved 'Vedar' and with Roman numerals, 19cm high (5)*

R6 000–8 000



168

169

**A René Lalique 'Poissons' glass dish, designed 1931**

the opalescent glass dish moulded with radiating fish centred by bubbles, *moulded signature 'R.LALIQUE', 29cm diameter*

R4 000–6 000



169

170

**A René Lalique 'Dahlia' flacon, introduced 1931**

flacon number 3, frosted and heightened with blue staining, *engraved 'R. LALIQUE FRANCE', 13cm high*

R4 000–5 000



170

171

**An assembled set of twelve Czechoslovakian intaglio glass and gilt-metal mounted place-card holders, 1920s**

each varicoloured engraved glass drop set to a gilt-metal mount, eight engraved with a putto blowing bubbles, four with a maiden picking a flower, *some oxidisation*, 7,4cm high (12)

R4 000–6 000

172

**A Barovier & Co glass coupe and a pair of candlesticks, Ecole Barovier for Vetreria Artistica, 1930s**

each clear and white opaque glass fluted body with applied gold foil, pincerd rims and moulded with bunches of grapes, *the coupe 15,4cm high, the candlesticks, 10,8cm high* (3)

R15 000–20 000

173

**Three Venetian glass candlesticks, Salviati, 1950s**

each with ruby-red base and sconce, the stem in the form of a clear glass dolphin, with gold foil inclusions, *in sizes, the tallest 19,5cm* (3)

R2 000–3 000

174

**A Barovier & Toso glass figure of a woman, 1950s**

the opalescent standing figure carrying a basket of three fish, on a square base, with gold foil inclusions to her hair, belt and the base, *the fish reglued, traces of paper label, 32cm high*

R3 000–4 000



172



173



175

175

**A Barovier & Toso 'Intarsio' glass vase, designed by Ercole Barovier, circa 1963**

tapering cylindrical, with alternating zigzag panels of grey, rust and transparent *bullicante* glass, 29,5cm high

R25 000–30 000

176

**A Barovier & Toso Murano 'Cordonato d'Oro' gold leaf glass bowl, 1960s**

shell-shaped, with blue and gold *graffito* interior, the exterior with white *diafano*, 8cm high

R4 000–6 000

177

**A Japanese boxwood three-case inro, Meiji Period (1868-1912)**

carved with a figure leading a buffalo before a pine tree, the reverse with the same figure seated before a waterfall, swirling clouds to the top and base, *lacking cord, 7,9cm high*

R5 000-7 000

178

**A pair of Japanese inlaid bronze vases, Meiji Period (1868-1912)**

ovoid, each finely incised in *shibuichi*, gilt and copper, with an *onagadori* (phoenix chicken) perched on a gnarled flowering peony, his long tail trailing down the length of the vase, *signed, 10,7cm high (2)*

R6 000-8 000

179

**A pair of Japanese cloisonné enamel vases, Meiji Period (1868-1912)**

each of flattened ovoid form, decorated with irises and chrysanthemums beneath a blossoming tree, the reverse decorated with smaller irises against a midnight-blue ground, *small repairs, impressed Ki or Moku, unknown maker or retailer, 12cm high (2)*

R10 000-12 000

180

**A Japanese cloisonné and ginbari enamel vase, Meiji Period (1868-1912)**

ovoid, decorated with dragonflies, rushes, lilies and other flowers against a turquoise and white ground, *minute spots of discolouration, impressed maker's mark possibly Takeuchi Seikurō, 12cm high*

R6 000-8 000



178



179



180



181

part lot



182



183



184

181

**A Japanese cloisonné enamel vase, Hayashi Yojiro, Meiji Period (1868–1912)**

the bulbous body with elongated neck, decorated with a writhing three-clawed dragon against a black ground, *impressed maker's mark*, 15,2cm high; and another, Ota Toshiro, Meiji Period (1868–1912), ovoid, decorated in ginbari with a writhing three-clawed green dragon against a midnight-blue ground, *impressed maker's mark*, *minor cracks and chips*, 15cm high (2)

R5 000–7 000

182

**A Japanese cloisonné enamel vase, Meiji Period (1868–1912)**

pear-shaped, with elongated neck, intricately decorated with wisteria, irises, lilies, chrysanthemums and other flowers against a midnight-blue ground, with lappet border to the neck and geometric design to the foot, *cracks*, *area of loss to the foot*, 26cm high

R5 000–7 000



185

183

**A Japanese cloisonné enamel vase, Inaba, 1983**

ovoid, decorated with alternating green and russet panels of dragons and *hō-ō* against a black ground beneath bands of flowers, birds and scrollwork, black interior, chrome rims, *black base with Inaba mark*, *includes original bill of sale dated 13 May 1983*, 13cm high

R6 000–8 000

184

**A Japanese Arita blue and white dish, late 17th century**

*Kraak* style, the centre painted with flowerheads before a bridge, the broad rim painted with radiating panels of bamboo and peonies, 39cm diameter

R15 000–20 000

185

**A Chinese carved cinnabar lacquer box and cover, Qing Dynasty, 19th century**

the circular body carved with alternating panels depicting cranes and deer before a landscape against a diaper ground enclosed by foliate scrolls, the rims with greek-key borders, the cover with a circular panel similarly carved, the black lacquer interior painted with gilt flowers, *some chipping and minor restoration to the rims*, 22,5cm high

R20 000–30 000

**PROVENANCE**

Purchased by the current owner from Gallerie de Chine, Cape Town, 1975.



186

**A Chinese bronze scholar's scroll weight, Qing Dynasty, 19th century**

rectangular with scroll corners, applied with a handle in the form of a pair of contesting dragons above a beaded border enclosing panels of *chilong*, 27cm long

R8 000–10 000

187

**A Siamese silver presentation box, early 20th century**

the hinged cover and body moulded in relief with figural landscapes within shaped cartouches, enclosed within foliate and stiff-leaf borders, 530g, 8cm high, 17,5cm wide, flanked by a pair of silver lions, 245g all in, 7cm high, to a rectangular hardwood base, 28cm wide

R8 000–10 000

188

**A Chinese Export silver cigarette case, maker's mark CLK for Lee Kam, late 19th/early 20th century**

rectangular, the front moulded in relief with a sage and his attendant beneath a tree overlooking a fisherman before a bridge, with pavilions and a mountainous landscape in the distance, centred by a shield-shaped cartouche engraved with the initials 'MDM', the reverse with a three-clawed dragon holding a flaming pearl, gilt interior, inscribed *Dongtian*, 67,3g, 8,3cm long

R1 500–2 000



186



187



189

**189**  
**An Indo-Tibetan thangka of  
 Shadakshari Lokeshvara,  
 19th century**

the *bodhisattva* seated in *vajrasana* on a lotus throne with his principal hands in *anjali mudra*, dressed in a dhoti, backed by a nimbus and aureole, flanked by *Shakyamuni* Buddha, *Amitābha* Buddha and various attendants, all amidst a green floral landscape, *pigment on leather*, 64cm high, 45cm wide

**R30 000–40 000**



190



191

**190**  
**A Chinese jade bangle**

the stone of mottled green tone with grey inclusions, *approximate diameter 7,5cm*

**R5 000–7 000**

**191**  
**A Chinese jade bangle**

carved with a pair of contesting dragons, the reverse with four characters, gilt highlights, the stone of mottled olive-green tone, *approximate diameter 7,5cm*

**R6 000–8 000**



192

**192**  
**A Chinese amethyst and turquoise  
 mala**

assembled with eighteen amethyst beads with two jade spacers, a large turquoise bead to the top and bottom attached to a carved red glass lozenge-shaped disc with a tassel, *36cm inner circumference*

**R20 000–30 000**

**193 No lot**



194



195



196



197



198



199

The following lots 194-202 were acquired by the current owner's mother in the 1930s.

194

**A Chinese Ding ware dish,  
Northern Song Dynasty  
(960-1127)**

the centre carved with a crane in flight enclosed by flowerheads, the rim with lotus and peony blooms beneath a greek-key border, unglazed rim, *some staining to the front, firing crack and small chip to the rim, 15cm diameter, with hardwood stand*

**R5 000-7 000**

195

**A Chinese Tz'u-chou type incense-  
holder in the form of a boy astride  
a pony, Qing Dynasty, Kangxi, 17th  
century**

the boy holding a banner with inscription, unglazed base, on four bracket feet, *chips, 16,5cm high*

**R15 000-20 000**

196

**A Chinese turquoise-glazed bowl,  
Qing Dynasty, Kangxi (1662-1722)**

with overall mottled glaze, raised on a circular unglazed foot, *glaze chips, 18cm diameter, with pierced hardwood stand*

**R6 000-8 000**

197

**A Chinese famille verte tea caddy,  
Qing Dynasty, Kangxi (1662-1722)**

the ovoid ribbed body painted with a maiden and a scholar before a writing table, with pierced wooden cover, *underglaze-blue double-ring mark, 12,5cm high, with carved stand on five peach-headed feet*

**R8 000-10 000**

198

**A Chinese yellow-glazed figure of  
a bird, Qing Dynasty, 18th century**

realistically modelled perched on a green domed base, *chip to footrim, 11cm high, with hardwood stand raised on four outset feet*

**R4 000-6 000**

199

**A pair of Chinese Sancai-glazed boats, Qing Dynasty, 18th century**

each realistically modelled with tiled roofs, the sides moulded with stylised lotus blooms, 11cm long, with a pair of pierced hardwood stands (2)

R12 000–15 000

200

**A Chinese Dehua figure of Guanyin, Qing Dynasty, late 17th/early 18th century**

the robed figure seated on a rocky plinth holding a small child on her lap with a scroll to one side, the front with a pair of young acolytes flanking a coiled dragon, *lacking vase from her right hand side, hairline cracks, some repairs*, 23,8cm high, with carved hardwood stand

R8 000–10 000

201

**A Chinese blanc de chine libation cup, Qing Dynasty, 17th/18th century**

moulded in relief with prunus blossom and a flowering branch, on a pierced base, with *later* metal mounts, swing-handle, raised on four hoof feet, 7,6cm high

R6 000–8 000

**PROVENANCE**

Bears the retail label for 'David Heller, Cape Town'



200



203



201



202

202

**A Chinese famille rose box and cover, Qing Dynasty, Qianlong (1736–1795)**

circular, the domed cover painted with a screened interior scene of a scholar, a maiden and an attendant enclosed by a border of lilies, peonies and foliage, *chip to the inner rim of the base, six-character red-glazed mark*, 5,5cm high, with carved wooden stand

R5 000–7 000

**Various Properties**

203

**A Chinese famille rose dish, Qing Dynasty, Qianlong (1736–1796)**

the centre painted with a spray of gilt flowers outlined in iron-red, enclosed by a border of pink lotus petals, the lightly barbed rim with further flowerheads, the petal-moulded reverse with celadon glaze, *some wear, minor enamel loss*, 20,8cm diameter

R15 000–20 000

**PROVENANCE**

Bears a label for 'D.M. & P. Manheim, 46 East 57th Street, New York City'

204

**A Chinese famille-rose ewer and cover, Qing Dynasty, Qianlong (1736–1795)**

Painted in the Mandarin palette, of flattened lobed outline, the front and reverse painted with figures at various pursuits enclosed by a diaper ground, the handle modelled in the form of a winged gilt dragon, the cover with peach-shaped gilt finial, raised on a quatrefoil base, 32,5cm high

R9 000–12 000



204

205

**A Chinese blue and white jar and cover, Qing Dynasty, 19th century**

Ovoid, painted with a pair of maidens before a pavilion bringing refreshments to a horseman and his two attendants, with balustraded garden and rocky outcrop, the cover painted with a seated small boy, the cover restored, underglaze-blue double-ring mark, 33,5cm high

R6 000–8 000



205

206

**A Chinese green and bronzed-glazed vase, Qing Dynasty, 19th century**

Of baluster outline, the shoulder moulded in relief with a ruyi-head and greek-key motifs, the sides applied with a pair of boar's head handles, glazed in a dark celadon green-glaze with a sienna-coloured border, 32,5cm high

R6 000–8 000



206

207

**A Chinese famille-rose and turquoise-ground bowl, Qing Dynasty, late 19th century**

The exterior painted with a figure attending his buffalo observed by the immortal He Xiangyu surrounded by clouds and birds, the reverse with a temple, turquoise-glazed interior, iron-red spurious six-character Jiaqing mark, 8cm high

R3 000–4 000



207



208

208

**A Chinese blue and white  
porcelain plaque, 20th century**

rectangular, painted with a pair of cranes  
before a rocky outcrop with a fruit-laden tree  
above, the right hand side with inscription,  
*the rim with minor chipping, 55,2cm high, 32cm  
wide, with brass-handled hardwood frame*

R20 000–30 000

209

**A Chinese flambé bottle vase,  
Qing Dynasty, late 19th/early  
20th century**

covered in a rich red glaze streaked with  
purple thinning to a mushroom-coloured  
rim, *two firing chips to the rim, the footrim with  
chips, 43,5cm high*

R50 000–60 000

210

**Two Chinese flambé and copper  
red glazed jars and covers, Qing  
Dynasty, late 19th/early 20th  
century**

each ovoid, one with copper-red glaze, the  
neck rim suffused with purple streaking, *later  
cover with restorations*, the other with deep  
purple flambé glaze, with mushroom-glazed  
rim, *later cover, each 32,8cm high (2)*

R40 000–60 000

211

**A pair of Chinese blue and white  
jars, Qing Dynasty,  
19th century**

baluster, each decorated with scrolling  
foliage and sweet peas and painted with  
*Shuangxi* characters, the shoulders with  
a greek-key border, the rim with stylised  
flowerheads, *underglaze-blue four-character  
mark, now fitted for electricity, with shades,  
36,5cm high (2)*

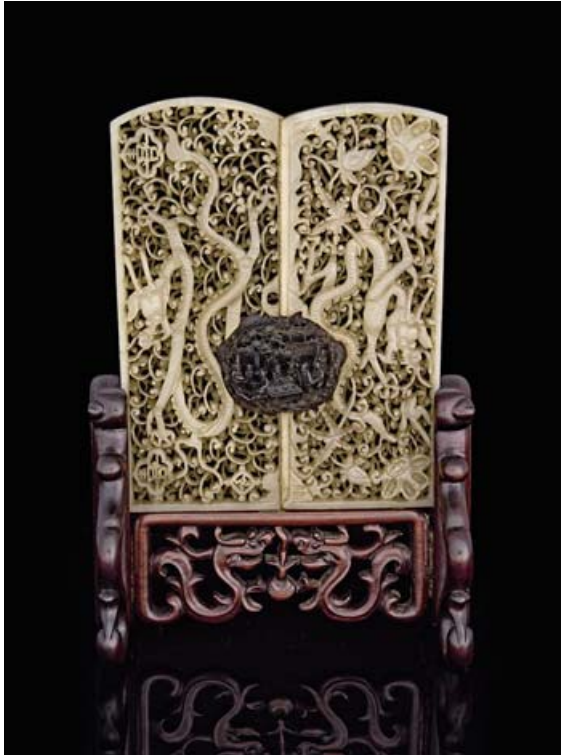
R12 000–15 000



209



210



212



213

The following lots 212-214 were acquired by the current owner's mother in the 1930s.

**\*212**

**A Chinese tortoiseshell-mounted pierced jade table screen, Qing Dynasty, 18th/19th century**

composed of a pair of arched panels carved with dragons, united by an oval-shaped tortoiseshell plaque carved with courtiers and their attendants before a pavilion, the stone of mottled grey and white tone, to a hardwood frame carved with a pair of dragons contesting a flaming pearl, *one panel reduced, 13,8cm high, 11cm wide*

**R15 000–20 000**

**213**

**A Chinese celadon jade plaque, late 19th/early 20th century**

rectangular, the front carved with a dragon, a *feng-hu* and flowers, the stone suffused with caramel tones, *5,4cm high, 8cm wide*, with carved wooden stand

**R12 000–15 000**



214

214

**A Chinese pale lavender jade figure of a buddha, 19th century**

seated on a double lotus throne in *rajalilasana* before a flame, his wrists adorned with bangles, lightly draped in flowing robes with beaded necklace and elongated earlobes, the pale lavender stone with russet and pale green inclusions, with dark russet veining to the flame, *23cm high*

**R15 000–20 000**



215

215

**A Chinese hardwood and pierced jade table screen, late 19th/early 20th century**

the rectangular plaque carved with writhing dragons, set to a conforming stepped moulded frame with pierced side supports on arched trestle feet, the stone of mottled dark green tone, *28cm high, 19cm wide*

**R6 000–8 000**

Various Properties



216

**A Chinese pale celadon jade carving of a cat playing with a bat, late 19th/early 20th century**

the recumbent cat on a lotus leaf, the stone of even tone, *4,8cm wide*

R9 000–12 000

217

**A Chinese carved pale celadon jade figure of a small boy, late 19th/early 20th century**

the kneeling figure holding a lotus bloom, the stone of even tone, *drilled with four holes, 4,5cm high*

R4 000–6 000

218

**A Chinese pale grey jade carving of a monkey, late 19th/early 20th century**

the seated animal holding a fruiting branch, the stone of even pale grey tone, *some chipping, 4cm high*

R4 000–6 000

219

**A Chinese pale celadon jade carving of a maiden, late 19th century**

the standing figure holding a vase of *lingzhi*, the stone of an even white tone, *8cm high*

R4 000–6 000

220

**A Chinese celadon jade carving of a boy and a swan, late 19th/early 20th century**

the seated figure with his right hand resting on the swan's back, the mottled celadon stone with russet and apple-green inclusions, *7,5cm high*

R9 000–12 000

221

**A Chinese pale celadon jade carving of Lu Dongbin, late 19th/early 20th century**

the standing robed figure holding a fly-whisk, the stone of even tone with traces of white inclusions, *small chips, the base drilled with a hole, 9cm high*

R5 000–7 000

222

**A Chinese carved celadon and grey jade figure of a small boy, early 20th century**

the standing figure holding a lotus bloom, the stone of pale celadon tone with grey and russet inclusions, *7,5cm high*

R6 000–8 000

223

**A Chinese carved celadon jade figure of a young boy, 20th century**

the figure holding a lotus stem, the stone of pale celadon tone with russet inclusions to the base, *5,8cm high*

R4 000–6 000

224

**A Chinese celadon jade carving of a monk, late 19th/early 20th century**

the seated figure at prayer, the stone with russet veining and mottled grey inclusions, *9,5cm high*

R5 000–7 000

225

**A Chinese pale celadon jade carving of a Lohan, late 19th/early 20th century**

the seated figure holding a leaf in his right hand, the stone of mottled tone, *lacking two left-hand fingers, the base drilled, chipping, 12cm high*

R4 000–6 000

226

**A Chinese carved pale celadon jade figure of a Lohan, late 19th/early 20th century**

his robes incised with a greek-key border, his left hand holding a coin, the stone of even tone, *the base drilled, 9,5cm high*

R5 000–7 000

227

**A Chinese mottled celadon jade carved brush pot, late 19th century**

cylindrical, cut with the eight trigrams, raised on three scroll-carved feet, the celadon stone with russet veining, *the base probably later, 5,5cm high*

R6 000–8 000

216



217



218



219



220



221



222



223



224



225



226



227



\*228

**A Chinese carved celadon jade snuff bottle, late 19th/early 20th century**

ovoid, with ivory stopper, the stone with pale russet inclusions to the side of the base, *6,7cm high*

R6 000–8 000

229

**A Chinese carved celadon jade box, early 20th century**

oblong, raised on a shallow foot rim, the stone with pale russet inclusions, *6cm wide*

R4 000–6 000

230

**A Chinese carved celadon jade figure of a maiden and a bird, 20th century**

the seated figure carved with a bird to her left shoulder and a string of prayer beads, the stone of mottled shades of green with russet inclusions, *10cm high*

R2 000–3 000

231

**Four Chinese carved celadon jade cups and five metal-bound celadon jade saucers, early 20th century**

each cup raised on a circular footrim, the rim of each saucer moulded with flowers and foliage, the stone of mottled celadon and russet tones, *three saucers with repairs, the saucers 7,8cm diameter (9)*

R4 000–6 000

232

**A Chinese carved pale celadon jade miniature cup and saucer, early 20th century**

the stone of mottled tone, with pale caramel and white inclusions, *the saucer 9cm diameter*

R3 000–4 000

233

**A near pair of Chinese jade, rose quartz, agate and hardstone flowering trees, mid 20th century**

each flower with glass bead stamens, each tree set to a rectangular jardinière raised on four block feet, *the taller 19,5cm high (2)*

R4 000–6 000

234

**A Chinese carved soapstone figure of Budai, early 20th century**

the seated figure reclining against a ribbon-tied sack, his right hand holding a *ruyi* sceptre, his robes carved with *ruyi* clouds, the pale brown stone with green overtone in parts, with russet highlights, *chips, 5,3cm high*

R3 000–4 000

Various Properties

235

**A Chinese hardwood and celadon jade inlaid ruyi sceptre, late 19th century**

the *ruyi* head inset with a celadon jade plaque carved with a pair of birds beneath a flowering prunus tree before a rocky outcrop, the arched stem with leaf-shaped terminal, *35cm long*

R5 000–7 000

236

**A Chinese celadon jade archer's ring, 19th century**

of plain cylindrical form, the stone with pale caramel inclusions, *2,4cm high*

R12 000–15 000

237

**A Chinese lavender jade archer's ring, 19th century**

carved with a fish against stylised waves, *staining, 2,3cm high*

R9 000–12 000

238

**A celadon jade archer's ring, late 19th century**

carved with panels of c-scrolls and bosses, the stone with pale grey and brown inclusions; a pale grey jade archer's ring, late 19th/early 20th century, carved with a pair of *chilongs*, *some staining*; and another, 20th century, mottled cream and brown hardstone, carved with scrolls, *the largest 2,5cm high (3)*

R12 000–15 000

Property of a Collector

The following lots 239-244 were acquired by the current owner's grandfather in the 1960s.

239

**A Chinese mottled russet and celadon jade archer's ring, 19th century**

*minor chipping, 2cm high*

R2 000–3 000

228



229



230



231  
part lot



232



233



234



235



236



237



238



239



240

**A Chinese carved celadon jade brush-rest, 19th century**

shaped as a four-peaked mountain, the stone suffused with russet inclusions, *12,5cm wide*

R6 000–8 000

241

**A miniature Chinese carved celadon jade archaistic vase, Zhi, 19th century**

the shoulders carved in low relief with alternating *taotie* masks and rondels, raised on a spreading circular foot, the stone with pale grey inclusions, *minor chips, 6cm high*

R7 000–9 000

242

**A miniature Chinese carved dark mottled green jade jar, 19th century**

the ovoid body with tapering shoulders, raised on a low circular foot, the stone with grey and russet inclusions, *4,3cm high*

R4 000–6 000

243

**A Chinese carved pale celadon jade bowl, 19th century**

with flared sides resting on an indented foot, the stone with mottled grey and russet inclusions, *5,2cm high*

R12 000–15 000

244

**A Chinese carved soapstone figure of Guan Yu, early 20th century**

the standing figure holding his beard with his right hand, his sword visible in his left hand, his robe carved with clouds, his beard, sword and shoes heightened with black pigment, the stone of pale mottled green and brown tones, *17,2cm high*

R4 000–6 000

**Property of a Collector**

The following lots 245-250 were acquired by the current owner from 1980-1995.

245

**A Chinese carved celadon jade handle, 19th/20th century**

of pierced *ruyi*-head outline with scroll handles, carved with a rectangular panel of prunus blossom enclosed by flowerheads and foliage, the reverse with carved characters, the stone of pale mottled celadon tone, *12cm wide*

R10 000–15 000

246

**A Chinese carved pale celadon jade brush washer, late 19th/early 20th century**

leaf-shaped, raised on a carved flowerhead base, the pale celadon stone with russet inclusions, *9cm long*

R6 000–8 000

247

**A Chinese carved pale celadon jade brush washer, late 19th/early 20th century**

carved as a peach supported on a leafy branch, the stone of mottled grey and celadon tone with caramel inclusions, *9cm wide*, with hardwood stand raised on four feet

R6 000–8 000

248

**A Chinese carved mottled brown hardstone brush washer, early 20th century**

leaf-shaped, raised on a scrolling foliate branch, *10cm long*, with hardwood stand raised on four scroll feet

R4 000–6 000

249

**A Chinese mottled brown and celadon jade carving of a fish, 20th century**

of irregular outline, the reverse carved with stylised petals, *drilled with a hole to the top, 9,5cm long*

R5 000–7 000

250

**A Chinese carved mottled green jade seal, 20th century**

the square seal surmounted by a *chilong*, the stone with russet inclusions, *some staining, 4,5cm high*

R3 000–4 000



240



241



242



243



244



245



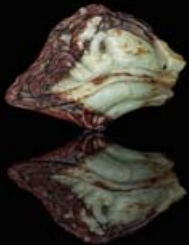
246



247



248



249



250

## Various Properties

251

**A Chinese hardwood altar table, Qing Dynasty, 19th century**

the panelled top above a pierced frieze on moulded square-section legs with incurved feet, 86cm high, 224cm wide, 35,5cm deep

R25 000–35 000



252

**A Chinese carved hardwood and hongmu altar table, Qing Dynasty, late 19th century**

the rectangular three panelled top above a frieze carved with squirrels, berries and vines, on moulded legs and block feet, 84cm high, 117cm wide, 41cm deep

R20 000–25 000



253

**A Chinese hardwood and marble-inlaid armchair, Qing Dynasty, late 19th century**

the back set with a rectangular marble panel enclosed by carved bats and clouds, downcurved arms on scroll supports, serpentine solid panelled seat on cabriole legs and incurved feet joined by stretchers

R6 000–8 000



254

**A Chinese hardwood four-drawer table, Qing Dynasty, late 19th century**

the rectangular panelled top above a frieze set with four panelled drawers, conforming sides and reverse, on moulded square-section legs with scroll-carved block feet, restorations, 86cm high, 178cm wide, 74cm deep

R30 000–40 000



255

**A Chinese hardwood display stand, early 20th century**

the rectangular panelled top above a carved and pierced fruit and flowerhead frieze, with two stepped rectangular shelves below, on moulded legs with outset feet joined by stretchers, *73cm high, 41cm wide, 30,5cm deep*

R6 000–8 000

256

**A nest of four Chinese hardwood tables, early 20th century**

each with rectangular panelled top enclosed by a bamboo border above a carved and pierced frieze, on bamboo-shaped legs joined by three-quarter stretchers, *the tallest 73cm high, 51cm wide, 36cm deep (4)*

R9 000–12 000

257

**A Chinese red lacquered and fruitwood desk, late 19th/early 20th century**

the rectangular top above an arrangement of five drawers, on square-section tapering legs with incurved block feet, *handles later, 87,5cm high, 123,5cm wide, 52,5cm deep*

R15 000–20 000

258

**A pair of Chinese red lacquered and fruitwood cupboards, late 19th/early 20th century**

each with panelled doors enclosing a shelf and a secret compartment, on tapering square-section legs, *overall chipping to the lacquer, 186cm high, 115cm wide, 57cm deep (2)*

R25 000–30 000

259-260 No lots

257



258