

The Vineyard Hotel, Conference Centre,
Newlands, Cape Town
Monday 17 March - 5.30pm

Important South African and International Art

**Day Session Paintings
Lots 541–660**

OPPOSITE
Lot 606 Piet van Heerden, *Namaqualand in Bloom* (detail)

South African & International Art



542



543

541

Georg Freidrich **WINKLER**

GERMAN 1772–1829

The Penitent Magdalena, after Battoni

oil on canvas
61,5 by 91,5 cm

R6 000–8 000

542

Ben **NICHOLSON**

BRITISH 1894–1982

Complex of Goblets

signed and dated 68 in pencil
in the margin
etching with gouache
sheet size: 36 by 29 cm

R15 000–20 000

543

Serge **POLIAKOFF**

RUSSIAN 1900–1969

Composition

signed and numbered 26/75 in pencil
in the margin
lithograph in colours
63,5 by 48,5 cm

R30 000–50 000

NOTES

Bears Waddington Galleries,
London, label on reverse.

544

Jan Ernst Abraham

VOLSCHENK

SOUTH AFRICAN 1853–1936

Evening Near George, C.P.

signed and dated 1914; signed, dated
and inscribed with the title and
'Riversdale, C.P.' on the reverse
oil on canvas
21 by 37,5 cm

R30 000–40 000

545

Jan Ernst Abraham

VOLSCHENK

SOUTH AFRICAN 1853–1936

Farm in the Hex River Valley, C.P.

signed and dated 1924; signed, dated
and inscribed with the title on the
reverse
oil on canvas
19,5 by 34,5 cm

R30 000–40 000

PROVENANCE

Acquired from the artist by the current
owner's great aunt, and thence by
descent.

546

Robert Gwelo **GOODMAN**

SOUTH AFRICAN 1871–1939

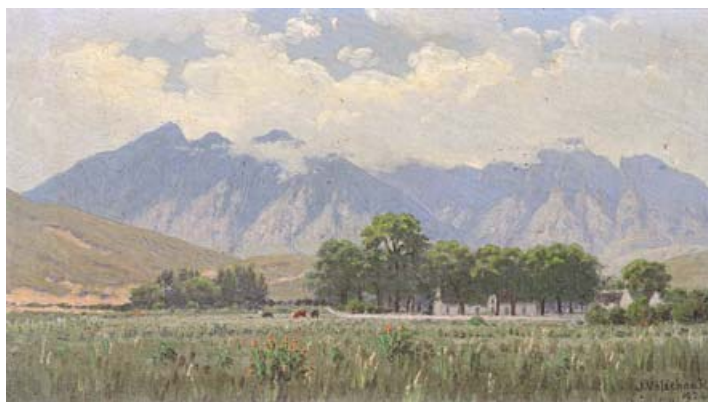
Constantia

signed
watercolour
36,5 by 56 cm

R15 000–20 000



544



545



546

547

Frans David **OERDER**

SOUTH AFRICAN 1867–1944

Landscape

signed and dated 96

oil on canvas

44 by 59,5 cm

R40 000–60 000

548

Tinus (Marthinus Johannes)

DE JONGH

SOUTH AFRICAN 1885–1942

*Farmhouse Between the
Mountains, Cape Province*

signed

oil on board

47,5 by 63 cm

R40 000–60 000



547



548

549

Jan Ernst Abraham

VOLSCHEK

SOUTH AFRICAN 1853–1936

The Langebergen and Riversdale Veld

signed and dated 1928; signed,
dated and inscribed with the title
on the reverse
oil on canvas
24,5 by 39,5 cm

R20 000–30 000

550

Jan Ernst Abraham

VOLSCHEK

SOUTH AFRICAN 1853–1936

*The Vette River in the Park,
Riversdale*

signed and dated 1928; signed,
dated and inscribed with the title
on the reverse
oil on canvas
25 by 35 cm

R20 000–30 000

551

Tinus (Marthinus Johannes)

DE JONGH

SOUTH AFRICAN 1885–1942

Mountain Stream

signed
oil on canvas
31 by 46 cm

R25 000–35 000





552

552

Allerley **GLOSSOP**

SOUTH AFRICAN 1870–1955

Lesotho Ponies

signed twice and dated 1902

oil on canvas

54,5 by 90 cm

R15 000–20 000

553

John Neil **RODGER**

SOUTH AFRICAN 1941–

Knabstrup Filly

signed and indistinctly dated 92;

inscribed with the title by another
hand on the reverse

oil on canvas laid down on board

38,5 by 49 cm

R40 000–60 000



553

554

Ernst Karl Erich **MAYER**

SOUTH AFRICAN 1876–1960

Cattle in a Landscape

signed and dated 1956
oil on canvas laid down on board
24 by 29 cm

R12 000–18 000

555

Alfred **PALMER**

SOUTH AFRICAN 1877–1951

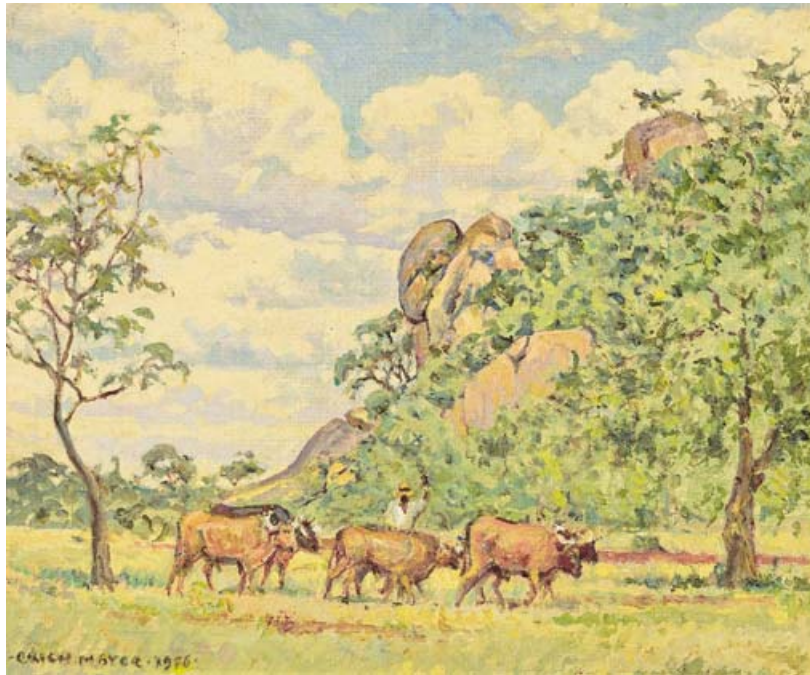
Racehorses on Durban Beach

signed; inscribed with title on
the reverse
oil on board
36,5 by 45,5 cm

R18 000–24 000

EXHIBITED

The Royal Institute of Oil Painters,
195 Piccadilly, London, W.1.



554



555

556

Sydney CARTER

SOUTH AFRICAN 1874–1945

Large Blue Gums

signed; inscribed with the artist's name
and the title on a Pretoria Art Museum
label adhered to the reverse
oil on canvas
73 by 91cm

R20 000–30 000

557

Nita (Pauline Augusta
Wilhelmina) SPILHAUS

SOUTH AFRICAN 1878–1967

Gum Trees

signed with the artist's initials
oil on cardboard
12,5 by 23 cm

R15 000–20 000



556



557

558

Nita (Pauline Augusta
Wilhelmina)

SPILHAUS

SOUTH AFRICAN 1878–1967

Windswept Trees

signed with the artist's monogram;
signed and inscribed with the title on
brown paper adhered to the reverse
oil on canvas

72,5 by 94,5 cm

R90 000–120 000

559

Ethel Ruth **PROWSE**

SOUTH AFRICAN 1883–1967

Ploughing on the Karroo

signed with the artist's monogram; the
backing paper inscribed with the title,
the artist's name, and 'The Old Town
House, Cape Town' by another hand
oil on board

27 by 37,5 cm

R15 000–20 000



558



559



560

560

Edith Luise Mary **KING**

SOUTH AFRICAN 1869–1962

The Wheel

signed
watercolour
35 by 38 cm

R20 000–30 000

LITERATURE

Harmsen, Frieda. (1980) *The Women of Bonnefoi: The story of the Everard Group*, Pretoria: Van Schaik. Illustrated in colour opposite page 72.



561

561

Pranas **DOMSAITIS**

SOUTH AFRICAN 1880–1965

Still Life of Flowers in a Vase

signed
oil on board
60,5 by 60,5 cm

R20 000–30 000



562

562

Alice **TENNANT**

SOUTH AFRICAN 1890–1976

Proteas in a Vase

signed

oil on canvas

50,5 by 60,5 cm

R8 000–10 000



563

563

Florence Louise Josephine **ZERFFI**

SOUTH AFRICAN 1882–1962

Pussy Willow

signed and dated 45; inscribed with the artist's
name and title on the reverse

oil on board

85 by 63 cm

R15 000–20 000

564

Jacob Hendrik **PIERNEEF**

SOUTH AFRICAN 1886–1957

*Uniegebou vanaf Prinshof,
Pretoria*

signed with the artist's initials and
signed in the mount in pencil
sepia ink and pencil on paper
17,5 by 22,5 cm

R15 000–20 000

LITERATURE

cf. Nilant, FEG. (1974) *Die Hout-en
Linosneë van J.H. Pierneef*, Cape Town/
Rotterdam: AA Balkema. Page 66,
plate 36, where the linocut is illustrated.

565

Johannes Antonie **SMITH**

SOUTH AFRICAN 1886–1954

Olifantsrivier, Betjoeanaland

signed; inscribed with the title in pencil
on the reverse
oil on canvas laid down on board
34,5 by 45 cm

R20 000–30 000

566

Willem Hermanus **COETZER**

SOUTH AFRICAN 1900–1983

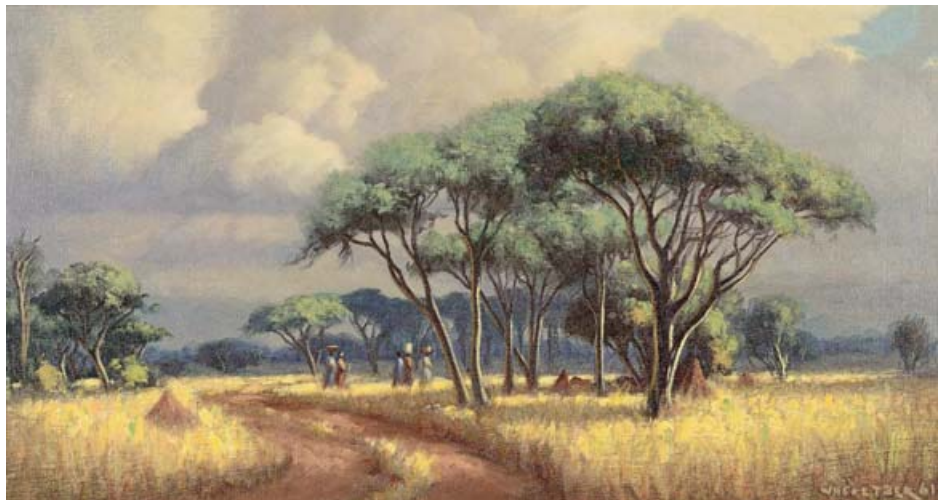
*North-Eastern Transvaal, Naby
Punda Maria*

signed and dated 61; signed and
inscribed with the title on the reverse
oil on canvas laid down on board
29,5 by 55 cm

R25 000–35 000



565



566

567

Errol Stephen **BOYLEY**

SOUTH AFRICAN 1918–2007

A Sunday Stroll

signed
oil on board
75 by 100 cm

R30 000–40 000

PROVENANCE

United Building Society, Johannesburg

568

Gerard **BHENGU**

SOUTH AFRICAN 1910–1990

Natal Landscape

signed
watercolour
21,5 by 33,5 cm

R18 000–24 000



567



568



569

569

Cecil **HIGGS**

SOUTH AFRICAN 1898–1986

Stellenbosch Berge

signed and dated 36
watercolour on paper laid down
on card
28,5 by 38,5 cm

R10 000–15 000

570

Georgina **ORMISTON**

SOUTH AFRICAN 1903–1967

Demolition

inscribed with the artist's name,
title and 1965 on the reverse by
another hand
oil on board
60 by 75 cm

R20 000–30 000



570

571

Cecil HIGGS

SOUTH AFRICAN 1898–1986

Shell

oil on canvas
50 by 37,5 cm

R15 000–20 000

572

Cecil HIGGS

SOUTH AFRICAN 1898–1986

Abstract Still Life

signed twice and dated 72
gouache on paper
19,5 by 24,5 cm

R12 000–16 000



571



572



573

573

Enslin Hercules **DU PLESSIS**

SOUTH AFRICAN 1894–1978

Black Cat on a Window Sill

signed

watercolour over pencil

37,5 by 56 cm

R10 000–15 000

574

Maud Frances Eyeston

SUMNER

SOUTH AFRICAN 1902–1985

Scottish Loch (Rhidoroch)

signed; inscribed with the title
on the reverse

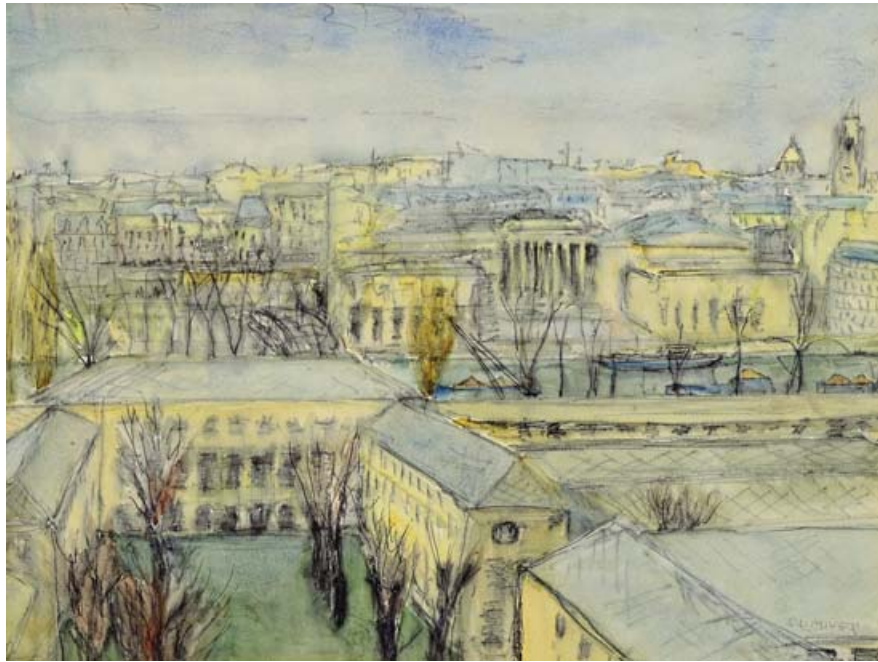
pen and ink and watercolour

47 by 59,5 cm

R18 000–24 000



574



575

575

Maud Frances Eyston

SUMNER

SOUTH AFRICAN 1902–1985

Paris Rooftops

signed

mixed media on paper

45,5 by 60,5 cm

R20 000–30 000

576

Maud Frances Eyston

SUMNER

SOUTH AFRICAN 1902–1985

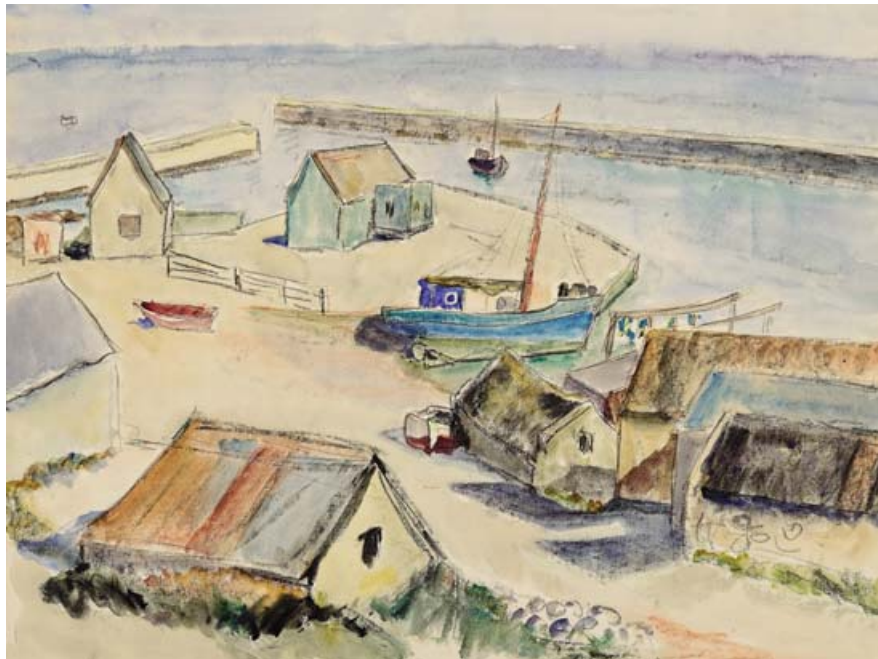
Gansbaai

signed twice

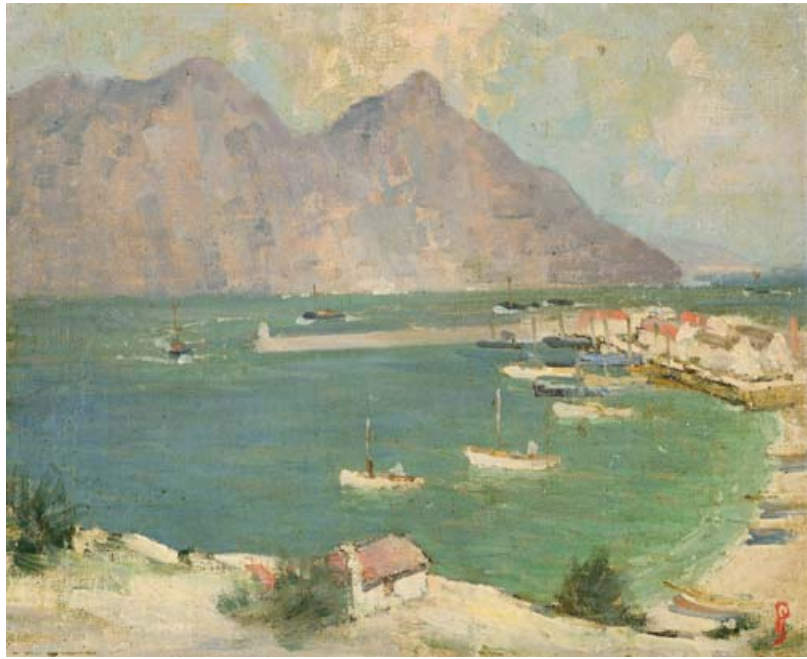
mixed media on paper

46 by 60,5 cm

R25 000–35 000



576



577

577

Ethel Ruth **PROWSE**

SOUTH AFRICAN 1883–1967

Hout Bay

signed with the artist's monogram
oil on canvas laid down on board
25 by 31,5 cm

R25 000–35 000

578

George **ENSLIN**

SOUTH AFRICAN 1919–1972

Hermanus Harbour

signed and dated '56
oil on board
48,5 by 59 cm

R20 000–30 000



578

579

Clement Edmond Theodore
Marie **SERNEELS**

SOUTH AFRICAN 1912–1991

Lac Kivu

signed and dated 60
oil on canvas
70 by 90 cm

R20 000–30 000



579

580

Clement Edmond Theodore
Marie **SERNEELS**

SOUTH AFRICAN 1912–1991

Fishing Boats in the Harbour

signed and indistinctly dated 60
oil on canvas
49,5 by 59 cm

R20 000–30 000



580

581

Otto **KLAR**

SOUTH AFRICAN 1908–1994

Seascape

signed and dated 1963
oil on board
57 by 96,5 cm

R20 000–30 000



581



582

582

Otto **KLAR**

SOUTH AFRICAN 1908–1994

Still Life of Proteas

signed; inscribed with the artist's name and
dated 1969 by another hand on the reverse

oil on board

45 by 70,5 cm

R12 000–16 000



583

583

Gregoire Johannes

BOONZAIER

SOUTH AFRICAN 1909–2005

*Still Life of Summer Flowers
in a Vase*

signed and dated 1934

oil on canvas

29,5 by 22 cm

R12 000–16 000



584

584

Clement Edmond Theodore Marie
SERNEELS

SOUTH AFRICAN 1912–1991

Still Life of Roses

signed and dated 68

oil on board

44,5 by 37,5 cm

R8 000–10 000



585

585

Clement Edmond Theodore Marie
SERNEELS

SOUTH AFRICAN 1912–1991

Still Life of Flowers in a Vase

signed and dated 62

oil on canvas laid down on board

60,5 by 50 cm

R18 000–24 000



586

586

Louis **VAN HEERDEN**

SOUTH AFRICAN 1941–

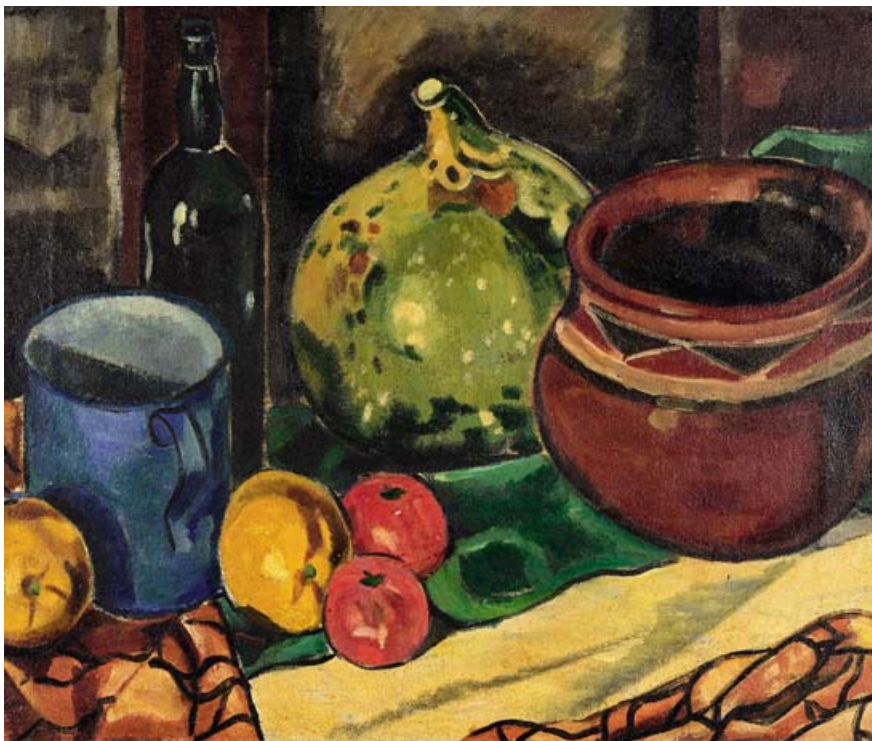
Still Life of Proteas and Pears

signed

oil on canvas

78,5 by 63,5 cm

R15 000–20 000



587

587

François **KRIGE**

SOUTH AFRICAN 1913–1994

Still Life with an African Pot, Blue Mug and Fruit

signed and dated 1932; inscribed with 'Still Life' and partially obscured address 'The Residency, Cathcart' on the stretcher

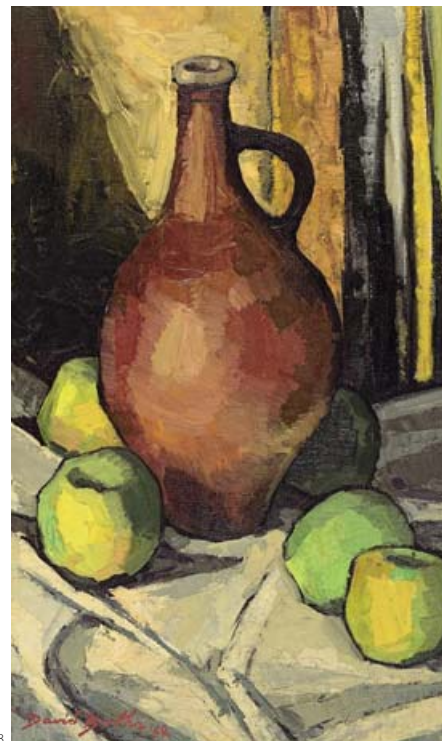
oil on canvas

49 by 59 cm

R30 000–40 000

PROVENANCE

Professor P J van der Merwe



588

588

David Johannes **BOTHA**

SOUTH AFRICAN 1921–1995

Still Life with Jug and Apples

signed and dated '68

oil on canvas laid down on board

49 by 29 cm

R20 000–30 000



589

589

David Johannes **BOTHA**

SOUTH AFRICAN 1921–1995

Sonneblomme

signed and dated '63; inscribed with the title on
a label adhered to the stretcher

oil on canvas

75,5 by 60,5 cm

R30 000–50 000



590

590

Adriaan Hendrik **BOSHOFF**

SOUTH AFRICAN 1935–2007

Still Life of Yellow Daisies in a Vase

signed

oil on canvas laid down on board

49 by 39 cm

R40 000–60 000



591

591

François KRIGE

SOUTH AFRICAN 1913–1994

Krisjan in a Green Hat

signed

oil on canvas

48 by 38,5 cm

R40 000–60 000



592

592

Alexander ROSE-INNES

SOUTH AFRICAN 1915–1996

Woman with a Pink Head Scarf

signed

oil on canvas

65,5 by 40 cm

R25 000–30 000



593

593

Carl Adolph **BÜCHNER**

SOUTH AFRICAN 1921–2003

Portrait of a Girl in a Straw Hat

signed

oil on board

34,5 by 29,5 cm

R30 000–50 000



594

594

Carl Adolph **BÜCHNER**

SOUTH AFRICAN 1921–2003

Pierrot

signed

oil on board

42 by 29,5 cm

R15 000–20 000



595

595

Maurice Charles Louis

VAN ESSCHE

SOUTH AFRICAN 1906–1977

Harlequin

signed

oil on board

22 by 14 cm

R20 000–30 000



596

596

Gregoire Johannes **BOONZAIER**

SOUTH AFRICAN 1909–2005

Albert with a Spade

signed and dated 1983

chalk pastel on paper

39 by 54 cm

R12 000–16 000



597

597

Fred (Frederick Hutchison) **PAGE**

SOUTH AFRICAN 1908–1984

Reading the Newspaper

signed

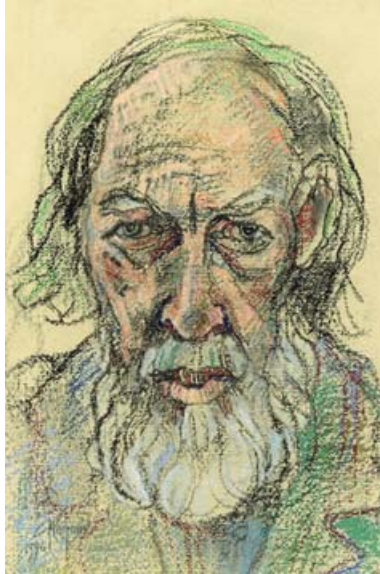
watercolour, pen and ink

25 by 14,5 cm

R15 000–20 000



598



599

part lot



599

part lot

598

Gregoire Johannes
BOONZAIER

SOUTH AFRICAN 1909–2005

Self Portrait, in a Beret

signed and dated 1975
chalk pastel on paper
55 by 37,5 cm

R25 000–35 000

599

Gregoire Johannes **BOONZAIER**

SOUTH AFRICAN 1909–2005

Selfportret

signed and dated 1996; signed, dated and
inscribed with the title on brown paper
adhered to the reverse
chalk pastel on paper
40,5 by 27 cm (2)

R12 000–16 000

NOTES

Accompanied by a photograph of the artist
with this work, signed and numbered 1/50
by MC Botha and signed and dated 1997 by
Gregoire Boonzaier on the mount
30 by 20 cm



600

600

George Mnyaluza Milwa
PEMBA

SOUTH AFRICAN 1912–2001

Mother and Child

signed and dated 55; inscribed
with the title on the reverse
watercolour and gouache
46 by 37 cm

R30 000–50 000

EXHIBITED

South African National Gallery, Cape
Town, *George Pemba Retrospective*, 1996

LITERATURE

Proud, Hayden. (1996) *George Milwa
Mnyaluza Pemba*, Cape Town: South
African National Gallery. Page 83,
catalogue number 67.



601

601

Titta **FASCIOTTI**

SOUTH AFRICAN 1927–1993

Two Xhosa Women

signed and dated 78
oil on canvas laid down on board
60 by 44,5 cm

R40 000–60 000

602

Rupert Norman
SHEPHARD

SOUTH AFRICAN 1909–1992

Basket Sellers Visiting Houses

signed and dated 1956; inscribed
with the title and date on the reverse
oil on board
50 by 60 cm

R25 000–35 000

603

Stefan **AMPENBERGER**

SOUTH AFRICAN 1908–1983

Figures in a Landscape

executed circa 1970
signed
oil on board
39 by 57 cm

R12 000–16 000

PROVENANCE

Purchased from the artist by the
current owner's mother.



602



603



604

604

Gregoire Johannes
BOONZAIER

SOUTH AFRICAN 1909–2005

Houses Along a Street

signed and dated 1955

pastel on paper

39,5 by 53,5 cm

R20 000–30 000

605

Gregoire Johannes
BOONZAIER

SOUTH AFRICAN 1909–2005

Cape Town Street Scene

signed and dated 1965

chalk pastel on paper

27 by 30 cm

R18 000–24 000



605

606

Piet (Pieter Gerhardus)

VAN HEERDEN

SOUTH AFRICAN 1917–1991

Namaqualand in Bloom

signed and dated 57

oil on canvas laid down on board

22 by 29 cm

R40 000–60 000

607

Piet (Pieter Gerhardus)

VAN HEERDEN

SOUTH AFRICAN 1917–1991

Extensive Cape Landscape

signed and dated '90

oil on board

40 by 59,5 cm

R30 000–40 000

608

Piet (Pieter Gerhardus)

VAN HEERDEN

SOUTH AFRICAN 1917–1991

Cape Winelands

signed

oil on canvas laid down on board

34,5 by 60 cm

R30 000–40 000



606



607



608

609

Gregoire Johannes
BOONZAIER

SOUTH AFRICAN 1909–2005

Street Scene

signed and dated 1973

watercolour

32,5 by 48,5 cm

R20 000–30 000



609

610

Gregoire Johannes
BOONZAIER

SOUTH AFRICAN 1909–2005

Cottages and Trees

signed and dated 1972

watercolour on paper

27 by 37 cm

R9 000–12 000



610

611

Gregoire Johannes
BOONZAIER

SOUTH AFRICAN 1909–2005

Venice

signed and dated 1972

mixed media on paper

33 by 41 cm

R10 000–15 000



611

612

David Johannes **BOTHA**

SOUTH AFRICAN 1921–1995

Free State Landscape

signed

oil on canvas

40 by 60 cm

R30 000–40 000

613

Piet (Pieter Gerhardus)

VAN HEERDEN

SOUTH AFRICAN 1917–1991

Spring Landscape

signed

oil on board

30 by 60 cm

R30 000–40 000



612



613



614

614

Christo **COETZEE**

SOUTH AFRICAN 1929–2000

Still Life with Apples in an Urn

signed; inscribed 'To Mr and Mrs Steenkamp with best wishes from Christo Coetzee' on a label adhered to the reverse

oil on board
55 by 70 cm

R30 000–40 000

NOTES

Schweickerdt Gallery label affixed to the reverse



615

615

Christo **COETZEE**

SOUTH AFRICAN 1929–2000

Spanish Bride

signed and dated 86
enamel on paper
84 by 60 cm

R15 000–20 000

616

Gregoire Johannes
BOONZAIER

SOUTH AFRICAN 1909–2005

Bosveld Peule op Pers Kleed

signed and dated 1976; signed and
inscribed with the title in English
and Afrikaans on the reverse

oil on canvas

35 by 40 cm

R40 000–60 000

617

Carl Adolph **BÜCHNER**

SOUTH AFRICAN 1921–2003

Still Life with Red Coffee Pot

signed

oil on board

49,5 by 59,5 cm

R25 000–35 000



616



617



618

618

Piet (Pieter Gerhardus)

VAN HEERDEN

SOUTH AFRICAN 1917–1991

Boland Farm

signed

oil on canvas laid down on board

45 by 60 cm

R30 000–40 000

619

Carl Adolph **BÜCHNER**

SOUTH AFRICAN 1921–2003

The Storm

signed

oil on board

48 by 62 cm

R15 000–20 000



619

620

Frans Martin **CLAERHOUT**

SOUTH AFRICAN 1919–2006

The Annunciation

signed
oil on board
75 by 89 cm

R50 000–70 000



620

621

Frans Martin **CLAERHOUT**

SOUTH AFRICAN 1919–2006

Boy with Chickens in a Cart

signed
oil on board
50 by 60 cm

R25 000–35 000



621

622

Frans Martin **CLAERHOUT**

SOUTH AFRICAN 1919–2006

Figures in a Rural Setting

signed
oil on board
49,5 by 59,5 cm

R30 000–50 000



623

623

Alexander **ROSE-INNES**

SOUTH AFRICAN 1915–1996

After the Opera

signed and dated 1960

oil on board

56 by 43,5 cm

R18 000–24 000



624

624

Douglas Owen **PORTWAY**

SOUTH AFRICAN 1922–1993

Seated Nude

signed and dated 84

mixed media on paper

75 by 50 cm

R20 000–30 000



625

625

Iris **AMPENBERGER**

SOUTH AFRICAN 1916–1981

Seated Girl

signed

oil on board

60 by 50 cm

R30 000–40 000

626

Frans Martin **CLAERHOUT**

SOUTH AFRICAN 1919–2006

Young Bride

signed
oil on board
62 by 45,5 cm

R20 000–30 000



626

627

Frans Martin **CLAERHOUT**

SOUTH AFRICAN 1919–2006

Two Donkeys

signed
oil on card
49,5 by 59 cm

R20 000–30 000



627

628

Frans Martin **CLAERHOUT**

SOUTH AFRICAN 1919–2006

Three Chickens

signed
oil on paper
45,5 by 59 cm

R20 000–30 000



628

629

David Johannes **BOTHA**

SOUTH AFRICAN 1921–1995

Huise, Wellington

signed

oil on board

29 by 39,5 cm

R20 000–30 000



629

630

David Johannes **BOTHA**

SOUTH AFRICAN 1921–1995

Arniston Cottages

signed and dated '62

oil on canvas laid down on board

39,5 by 60 cm

R25 000–35 000



630

631

David Johannes **BOTHA**

SOUTH AFRICAN 1921–1995

Washing Day

signed and dated 44

oil on board

29 by 39,5 cm

R25 000–35 000



631

632

Carl Walter MEYER

SOUTH AFRICAN 1965–

Huisie, Klein Karas, Namibië

signed with the artist's initials
and dated 12
oil on canvas
59 by 49 cm

R35 000–45 000



632

633

Carl Walter MEYER

SOUTH AFRICAN 1965–

Evening Sunlight

signed with the artist's initials and
dated 99; inscribed with the title
on the stretcher
oil on canvas
49 by 59 cm

R30 000–40 000



633

634

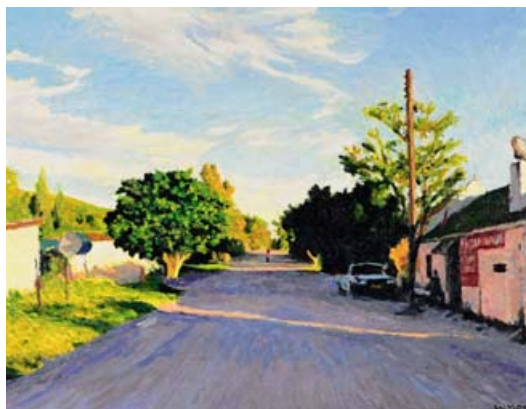
Carl Walter MEYER

SOUTH AFRICAN 1965–

Redelinghuys

signed with the artist's initials
and dated 08
oil on canvas
49 by 63,5 cm

R35 000–45 000



634



635

635

Kenneth **BAKKER**

SOUTH AFRICAN 1926–1988

Geostructure No 5

signed and dated 66; inscribed with the title and the artist's name and address on the reverse

mixed media on board

152 by 122 cm

R20 000–30 000



636

636

Aileen **LIPKIN**

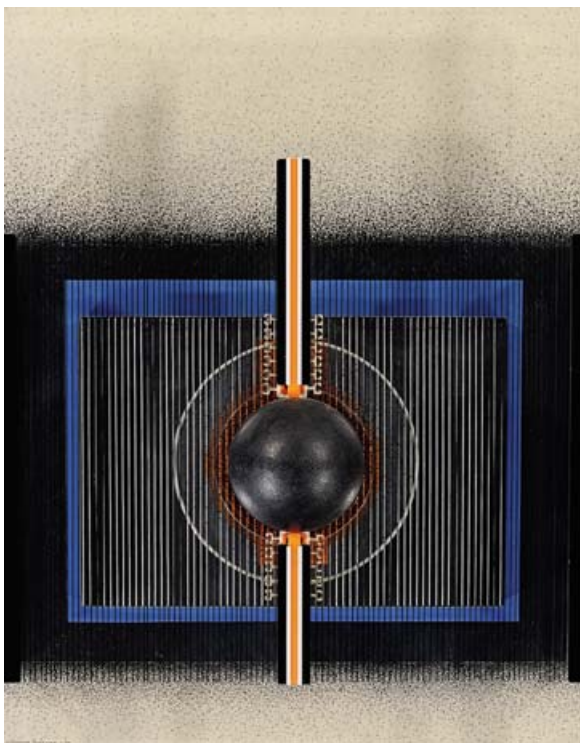
SOUTH AFRICAN 1933–1994

Abstract with Aloe Pod

pigment, sand, paper, aloe pod, and rose thorns on canvas, unframed

102 by 76,5 cm

R30 000–50 000



637

637

Kenneth **BAKKER**

SOUTH AFRICAN 1926–1988

Construction

signed and dated 73

mixed media relief construction

75 by 60 cm

R15 000–20 000



638

638

Larry (Laurence Vincent) **SCULLY**

SOUTH AFRICAN 1922–2002

Abstract

signed and dated 73

oil on canvas

60 by 60 cm

R18 000–24 000



639

639

Nichola Alice **LEIGH**

SOUTH AFRICAN 1966–

Umgeni Koppie in Summer

signed; inscribed with the artist's name,

2008 and the title on the stretcher

oil on canvas

55,5 by 77 cm

R10 000–15 000

640

Eben **VAN DER MERWE**

SOUTH AFRICAN 1932–

Abstract Landscape

signed and dated 99

oil on board

42 by 60 cm

R12 000–18 000



640

641

Cecily **SASH**

SOUTH AFRICAN 1924–

Whimsical Spirals

signed and dated 68; inscribed with the artist's name, address, the title and 'No. 701' on the stretcher
acrylic on canvas
91,5 by 92 cm

R15 000–20 000

EXHIBITED

Pretoria Art Museum and Durban Art Gallery, *Cecily Sash 54-74, Prestige Retrospective Exhibition*, 1974, catalogue number 76, illustrated on catalogue cover

642

Eugene **LABUSCHAGNE**

SOUTH AFRICAN 1921–1990

Modernist Musings

signed and dated 1957
oil on canvas
45 by 53,5 cm

R20 000–30 000



641



642

643

Cecil Edwin Frans **SKOTNES**

SOUTH AFRICAN 1926–2009

Two Figures

signed and dated 66
pastel and pencil on paper
48 by 66 cm

R12 000–16 000

644

Peter **CLARKE**

SOUTH AFRICAN 1929–

Bird Rock

signed and dated 19.1.1968 and
inscribed with the title and '(monoprint)
version I' in pencil in the margin
printing ink on paper
image size: 27,5 by 23 cm

R14 000–18 000

645

Deborah Margaret **BELL**

SOUTH AFRICAN 1957–

Diary IV

executed in 2000
signed, numbered 17/20 and inscribed
with the title in pencil in the margin
drypoint with colour roll and chine collé
sheet size: 120,5 by 88 cm

R25 000–35 000

LITERATURE

White, Juliet. (2010) *Deborah Bell's
Alchemy*, Johannesburg: David Krut
Publishing. Illustrated in colour on
page 35.



645

646

Edoardo Daniele **VILLA**

SOUTH AFRICAN 1915–2011

Bird

signed and dated 1993
bronze, on a wooden base
height: 17 cm, excluding base;
base 3 cm

R20 000–30 000

PROVENANCE

A wedding gift from the artist to the
current owner

647

Dylan **LEWIS**

SOUTH AFRICAN 1964–

Giant Eagle Owl, maquette

executed 2002
signed, numbered 27/36, and stamped
with the 'Sculpture Casting Services SA'
foundry mark, base with studio label
bronze
height: 13,5 cm

R25 000–35 000

648

Dylan **LEWIS**

SOUTH AFRICAN 1964–

Bowl I

signed, stamped Fo10, and numbered
17/75
16 cm high, 51,5 cm diameter

R12 000–16 000



646



647



648

649

Walter Whall **BATISS**

SOUTH AFRICAN 1906–1982

Skiathos

signed, dated 29.7.67, inscribed with the title and 'Mother Calling "Nicoletta! Nicoletta!"

pen and ink
32,5 by 40 cm

R12 000–16 000

650

Walter Whall **BATISS**

SOUTH AFRICAN 1906–1982

Skiathos, Greece

signed, dated 27 July 1967, and inscribed with the title

pen and ink
32,5 by 40 cm

R12 000–16 000

651

Walter Whall **BATISS**

SOUTH AFRICAN 1906–1982

Untitled

signed and numbered 20/25 in pencil in the margin

screenprint in colours
sheet size: 45 by 64 cm

R10 000–15 000

LITERATURE

Skawran, Karin. (2005) *Walter Battiss: Gentle Anarchist*, Johannesburg: Standard Bank Gallery. Page 155, illustrated in colour.

652

Robert Griffiths **HODGINS**

SOUTH AFRICAN 1920–2010

Night Patrol, New York

signed, dated '02, numbered 16/30 and inscribed with the title in pencil in the margin

lithograph printed in colours
sheet size: 56 by 75 cm

R10 000–15 000

LITERATURE

cf. Buys, Anthea. (ed.) (2012) *A Lasting Impression: The Robert Hodgins Print Archive*, Johannesburg: WITS Art Museum. Another example from the edition illustrated in colour on page 275.

653

Robert Griffiths **HODGINS**

SOUTH AFRICAN 1920–2010

Old Lady

signed, dated 2008, numbered 1/1 in pencil and embossed with the studio chop mark 'TPS' in the margin

hand-coloured etching
image size: 28,5 by 24 cm
sheet size: 48,5 by 38 cm

R25 000–30 000

654

Robert Griffiths **HODGINS**

SOUTH AFRICAN 1920–2010

Recruit 187145

signed, dated 92 and inscribed with the title watercolour
29 by 40,5 cm

R20 000–30 000

655

Paul **EMSLEY**

SOUTH AFRICAN 1947–

Pool Party

signed and dated 81
chalk pastel on paper
44,5 by 58 cm

R14 000–16 000

NOTES

The Fatalist II, a related painting from the same series, is in the permanent collection of Iziko South African National Gallery. See Botha, Amanda. (2012) *Paul Emsley Retrospective*, Stellenbosch: Sasol Art Gallery. Illustrated in colour on page 16

656

Ransome **STANLEY**

BRITISH 1953–

Jump

signed, dated 2008 and inscribed 'München'
oil on canvas
105 by 160 cm

R20 000–30 000

NOTES

Accompanied by a monograph, Nida-Rümelin, Julian et al. (2007) *Ransome Stanley Abb 2002 - 2007*.

657-660

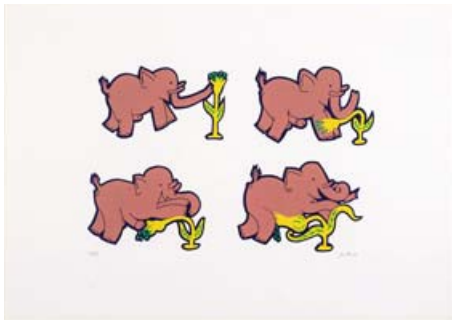
No Lots



650



654



651



655



653



656