

The Vineyard Hotel, Conference Centre,
Newlands, Cape Town
Monday 17 March - 3.30pm

**Jewellery,
including 29 Lots to be Sold to
Benefit Animal Charities and
A Collection of Compacts,
Boxes and Minaudières**

Lots 381 - 540

OPPOSITE
A collection of compacts, boxes and minaudières



381

**LOTS 381-410 ARE TO BE SOLD TO BENEFIT
THE FOLLOWING CHARITIES:**

- Cape of Good Hope Society for the Prevention of Cruelty to Animals
- Johannesburg Society for the Prevention of Cruelty to Animals
- Animal Rescue Organisation of the Western Cape

381

**Gold and agate-mounted
pendant/locket, circa 1860**

the shell-shaped agate with a centrally set pearl, set to a beaded and rope-twist border suspending a graduated fringe, the reverse with glazed locket compartment, to a double horn surmount with bale, similarly decorated, *length approximately 73mm*; with an associated pink and yellow gold cable-link chain, *length approximately 680mm*

R4 000–6 000

382

**Victorian seed pearl and gold
hinged bangle**

the front set with a graduated line of seed pearls, to a knife-edge bar bangle, *inner width approximately 55mm*; and a Classical Revival gold bracelet, the hinged front with granulation and filigree work, *inner width approximately 56mm (2)*

R4 000–5 000



382

383

**Victorian garnet, enamel and gold
pendant/locket**

the heart-shaped carbuncle garnet enclosed by an arched blue enamel border within a leaf scroll gold ground, the reverse with heart-shaped compartment, *glass lacking, length approximately 24mm*, with 18ct gold chain, *length approximately 550mm*; a Victorian turquoise and gold mourning pendant/locket, heart-shaped, the whole engraved with scrolling foliage, the front with a turquoise flowerhead, the interior with hair compartment, engraved 'Mary Julia Frye, Obt. March 16, 1847', *central stone lacking, length approximately 15mm*, with associated chain, *length approximately 360mm*; a topaz and seed pearl heart-shaped pendant, of pierced outline, set to the centre with a circular-cut topaz enclosed by half seed pearls, the bale claw set with three half seed pearls, *length approximately 30mm*, with associated chain, *length approximately 450mm*; an enamel, diamond and seed pearl pendant/locket, circular, set to the centre with rose-cut diamonds and half seed pearls against a green enamel ground, enclosed by a white enamel border, the reverse with glazed compartment, *length approximately 20mm*, with associated chain, *length approximately 450mm*; a late Victorian sapphire and diamond ring, Birmingham, 1897, set to the centre with three round-cut sapphires interspersed with four old-cut diamonds, with heart-shaped shoulders, the shank inscribed 'J.Mc.L to M.D.', *size R*; and a ruby and diamond ring, claw-set with three alternating rubies and two old-cut cushion-shaped diamonds, *size N (6)*

R5 000–6 000



383

384

Seed pearl and gold hinged bangle, circa 1890

the front set with a flowerhead and scrolls highlighted with seed pearls, to a knife-edge bar bangle, *inner width approximately 55mm*; and a Victorian seed pearl and gold hinged bangle, the front set with granulation and wirework, highlighted with seed pearls, *inner width approximately 550mm*; and two Victorian stick pins, one set with a ruby, the other with a rose-cut diamond (4)

R3 000–4 000

385

Cultured pearl necklace

composed of a single strand of graduated cultured pearls, measuring approximately 6.00 to 9.20mm, the clasp set with rose-, old- and eight-cut diamonds, *length approximately 535mm*; a cultured pearl necklace, composed of a single strand of cultured pearls, set to an oval tourmaline and brilliant-cut diamond clasp, *length approximately 420mm*; and a pearl and blue lace agate necklace, *length approximately 410mm* (3)

R6 000–8 000



384

385
detail

386

Norwegian enamel and silver necklace, Marius Hammer (1847-1927)

composed of five pierced shaped filigree frames, centred with oval blue enamel plaques, highlighted with foliate motifs, linked by a fine silver chain, the central plaque with a blue pearl drop, *length approximately 405mm*; a Danish enamel, mother-of-pearl and silver pendant, Volmer Bahner & Co, Copenhagen, 1962-1987, oval, set to the centre with a collet-set circular mother-of-pearl, enclosed by green and blue enamel, with tear-shaped drop, *length approximately 50mm*, with *associated chain, length approximately 420mm*; an enamel and silver pendant, J Aitkin & Son, Birmingham, 1915, decorated with a spray of roses against a white basketweave ground, with mauve enamel drop, *length approximately 43mm*, with *associated chain, length approximately 400mm*; an Edwardian enamel necklace, set to the centre with a double-sided purple enamel ribbon and flower pendant, the chain interspersed with enamel flowerheads; *length approximately 520mm*; and a pair of enamel earrings, screw fittings (6)

R6 000-8 000



386
part lot

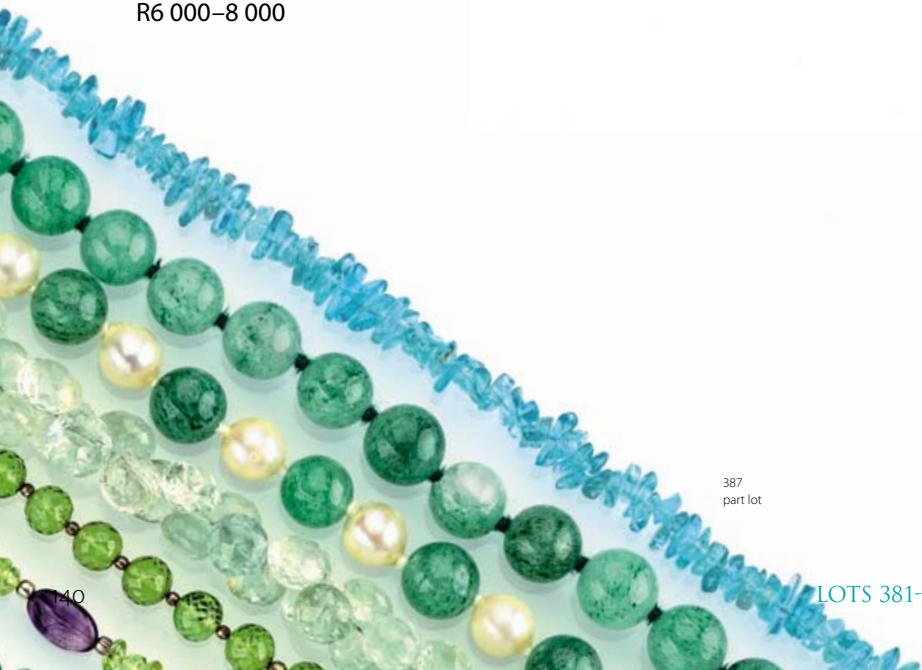
387

Chrysoprase and pearl necklace

set to a three half pearl and diamond clasp, *length approximately 450mm*; a chrysoprase bead necklace, *length approximately 620mm*; a chrysoprase bead necklace with a teardrop-shaped pendant, *length approximately 450mm*; a peridot and amethyst bead necklace, *length approximately 430mm*; a faceted peridot and silver bead necklace, *length approximately 420mm*; a faceted aquamarine bead necklace, *length approximately 410mm*; an apatite bead necklace, *length approximately 430mm*; a pair of collet-set opal earrings, screw fittings; and a pair of chrysoprase earrings, screw fittings (11)

R2 000-3 000

387
part lot



LOTS 381-410 ARE TO BE SOLD TO BENEFIT ANIMAL CHARITIES



388
part lot

388

Edwardian plique-à-jour enamel, seed pearl and mother-of-pearl necklace

composed of three pendant drops of stylised foliate form, to a fine link chain interspersed with four seed pearls, *length approximately 380mm*; a green agate and silver bracelet, early 20th century, with heart-shaped clasp, the bracelet composed of three-leaf clovers, *some loss, length approximately 185mm*; a marcasite, seed pearl and silver necklace, modern, with floral and foliate sections, *length approximately 400mm*; a pair of marcasite, seed pearl and silver earrings, modern, *clip and screw fittings*; and an Italian silver box-link plaited chain, *length approximately 395mm* (6)

R3 000–4 000

389

Victorian diamond and enamel mourning ring, London, 1861

enamelled with the words 'In Memory of interspersed between bands of rose- and old-cut diamonds, the shank inscribed 'M.A.T. died Feb 4th 1865 aged 8 years', *size N*; a three stone diamond ring, claw-set with three old-cut diamonds to bifurcated shoulders, *size N½*; and a miscellaneous group of six pairs of earrings, *all with screw fittings*, including: an opal triform pair; an amethyst and seed pearl pair; a simulated spinel pair; a moonstone pair; and two further pairs (14)

R1 500–2 000



389

390

Edwardian peridot, pink sapphire and seed pearl pendant necklace, Murlle Bennet & Co

the open frame collet-set with a flowerhead with peridot petals and a simulated ruby centre, suspended from three collet-set pink sapphires, to a fine gold chain, *length approximately 400mm*; a diamond and peridot ring, claw-set with three circular-cut peridots and four round brilliant-cut diamonds, *size N½*; and a pair of demantoid garnet and pink tourmaline earrings, *screw fittings* (4)

R3 000–4 000

391

Edwardian amethyst and seed pearl pendant necklace

claw-set to the centre with an oval-shaped amethyst, suspending a knife-edge bar set with a square-cut amethyst, terminating in a pear-shaped amethyst, highlighted with seed pearls, to a fine gold chain, *length approximately 410mm*

R2 000–3 000

392

Edwardian amethyst and seed pearl necklace

designed as a series of oval-cut amethysts suspended from a seed pearl necklace, *length approximately 385mm*; a turquoise and seed pearl necklace, *length approximately 385mm*; and a pearl, seed pearl and pierced gilt bead necklace, *two strands with damage, length approximately 430mm* (3)

R3 000–4 000



393

Pair of amethyst and diamond earrings

of floriform, the claw-set amethyst enclosed by old-cut diamonds, *screw fittings*; an amethyst and seed pearl heart-shaped pendant, set to a gold bale, *length approximately 18mm*, with associated gold chain, *length approximately 445mm*; an amethyst and diamond ring, the oval-shaped collet-set amethyst enclosed by eight-cut diamonds, *size N½*; a pair of amethyst and diamond earrings, suspending a heart-shaped drop, *screw fittings*; an Edwardian amethyst and seed pearl pendant/brooch, the oval-shaped claw-set amethyst enclosed by an openwork foliate frame, highlighted with seed pearls, *length approximately 47mm*, with associated gold chain, *length approximately 550mm*; and an amethyst brooch, *damaged* (8)

R4 000–6 000

394

**Moonstone and sapphire ring,
S Blackensee & Sons Ltd, early
20th century**

centrally set with a cabochon moonstone enclosed by claw-set sapphires, *size O*; a pair of rose quartz, sapphire and diamond earrings, the claw-set cabochon stone with three marquise-cut claw-set sapphires and tube-lined and channel-set diamonds, *clip fittings*; a pair of garnet and seed pearl earrings, set to the centre with a cabochon stone, *clip fittings*; a pair of garnet earrings, *screw fittings*; and a diamond and pink topaz ring, the central foiled step-cut topaz enclosed by four old-cut diamonds, within a scrolling surround, closed back setting, *size M½* (8)

R1 500–2 000

395

Amethyst double strand necklace

strung with faceted beads, to a claw-set oval clasp, *length approximately 410mm*; a bracelet *en suite*, *length approximately 220mm*; an amethyst bead necklace, *length approximately 630mm*; a lapis lazuli and sodalite bead necklace, *length approximately 720mm*; a lapis lazuli and freshwater pearl bead necklace, *length approximately 460mm*; and a faceted iolite and gold bead necklace, *length approximately 520mm* (6)

R2 000–3 000



393
part lot



394



395
detail



396

396
Edwardian seed pearl necklace
 set to the front with an openwork floral
 design accented with seed pearls, to a fine
 curb-link chain, *length approximately 380mm*
R2 000–3 000



397

397
**Victorian emerald and seed
 pearl ring, Birmingham, 1899**
 designed as a flowerhead, set to the
 centre with an emerald enclosed by half
 seed pearls, the shoulders claw set with
 baguette-cut emeralds and seed pearls,
 inscribed 'A.H. from M.S.', *size N*; an emerald
 and diamond ring, set with alternating
 emeralds and old-cut diamonds, *size N½*; a
 seed pearl, diamond and turquoise ring, *size*
M; and a pair of seed pearl and turquoise
 earrings, *screw fittings (5)*
R3 000–3 500



398
 part lot

398
**Two Victorian pendants/
 loquets**
 oval, one enameled with a bird perched on a
 branch, the other with a rope and medallion
 border, *the larger length approximately*
40mm, each with *associated chain, length*
approximately 380mm; a Victorian diamond
 bangle, set to the front with a row of
 graduated rose-cut diamonds, *one stone*
lacking, inner width approximately 55mm; and
 two pairs of Victorian gold earrings, one pair
 set with an old-cut diamond, the other of
 floriform, *screw fittings (7)*

R4 500–5 000



399
part lot



399

19th century gold chain

designed as a continuous row of textured links, interspersed by pierced beads and flowerhead highlighted lozenge-shaped links, set to a *later* waisted rectangular clasp with engraved scrollwork, *length approximately 397mm*; a snake-link gold chain, *length approximately 425mm*; and a 15ct gold gate-link bracelet, *length approximately 153mm* (3)

R7 000–8 000



400

400

Diamond and seed pearl ring

the three central seed pearls enclosed by old-cut diamonds, *size N½*; an aquamarine and seed pearl ring, set to the centre with an oval-cut aquamarine, enclosed by a foliate border of seed pearls, *size O*; a late Victorian diamond and seed pearl brooch, the centre set with an old-cut diamond enclosed by half seed pearls, in the form of a flower within a rope border, with sprays of ivy to an s-shaped bar, *width approximately 35mm*; a Victorian seed pearl and garnet ring, *size N½*; and a Victorian seed pearl and ruby ring, *size N* (5)

R1 200–1 500

401

Victorian enamel and seed pearl necklace

set to the front with two openwork panels inlaid with a semi-translucent pink and green matte enamel and seed pearl leaf and berry design, joined by a *later* seed pearl flowerhead, to a gold cable-link chain, *length approximately 415mm*

R3 000–4 000



401



402



403

402

Porcelain and enamel pendant/brooch, 19th century

the oval plaque painted with a portrait of a woman in 18th century attire, the gold frame inlaid with blue, green and white enamel flowers and foliage, *later pin, some damage to the porcelain, length approximately 20mm, with associated chain, length approximately 380mm*; and a seed pearl pendant, centred by an oval miniature of a young man, enclosed by half seed pearls, surmounted by a bow, *damage, length approximately 29mm, to a fine link chain interspersed with pearls, length approximately 390mm (2)*

R1 200–1 500

403

Peridot and seed pearl pendant/locket, late 19th century

the circular glazed compartment enclosed by an alternating flower and leaf band collet-set with seed pearls and peridots, the bale claw-set with seed pearls, *length approximately 49mm, with associated chain, length approximately 720mm*; a Victorian heart-shaped seed pearl and gold pendant, *length approximately 23mm, with associated chain, length approximately 420mm*; a pair of seed pearl earrings in the form of flowerheads, *later screw fittings*; and a pair of quartz and seed pearl drop earrings, pear-shaped, *later screw fittings (6)*

R4 000–6 000



404
part lot

404

**Georg Jensen silver ring,
designed by Henry Pilstrup,
1989**

with two grooved bands inset with trios of beads, *stamped Georg Jensen 60D, size O*; a Danish silver bangle, Niels Erik, circa 1970, *width approximately 60mm*; a pearl and diamond ring, the shoulders with six eight-cut diamonds, *size O*; a pearl ring, claw-set with bifurcated shoulders, *size N*; and a pearl and gold enhancer pendant, *length approximately 27mm* (5)

R4 000–5 000

405

Topaz and seed pearl pendant

the oval-cut collet-set topaz enclosed by an open frame highlighted with half seed pearl flowerheads, the *associated* bale set with half seed pearls, *length approximately 41mm*, with *associated* chain, *length approximately 460mm*; a peridot and diamond ring, the central claw-set peridot flanked by six rose-cut diamonds, *size N*; a beryl and diamond ring, the three cabochon beryls interspersed by four old-cut diamonds, *size L½*; a pair of mother-of-pearl and diamond earrings, set with a mother-of-pearl to the centre within a border of old-cut diamonds, *screw fittings*; and a pair of pearl and gold earrings, designed as a three-leaf clover, *screw fittings* (7)

R1 500–2 000

406

**American 14ct gold necklace,
Forstner**

of rope-twist form, *length approximately 40mm*

R16 000–18 000

407

**Tourmaline, citrine and gold
necklace**

claw-set to the centre with a pear-shaped deep orange citrine, flanked by an oval claw-set pink tourmaline and a claw-set emerald-cut blue-green tourmaline, to a rope-twist chain, *length approximately 430mm*; and an 18ct gold wire collar, *width approximately 128mm* (2)

R6 000–8 000



405

406

407 part lot





408

Pair of diamond and pearl earrings

the 9.00mm pearl heading a claw-set round brilliant-cut diamond; two pairs of pearl earrings, in sizes; a pair of grey pearl earrings; a pair of enamel and gold earrings, blue enamelled with a star claw-set to the centre with a seed pearl, against an engraved circular ground, *all with screw fittings*; a seed pearl and pink bead necklace, set to a floriform seed pearl clasp, *length approximately 385mm*; and two trace-link gold and pearl chains, *each length approximately 390mm* (13)

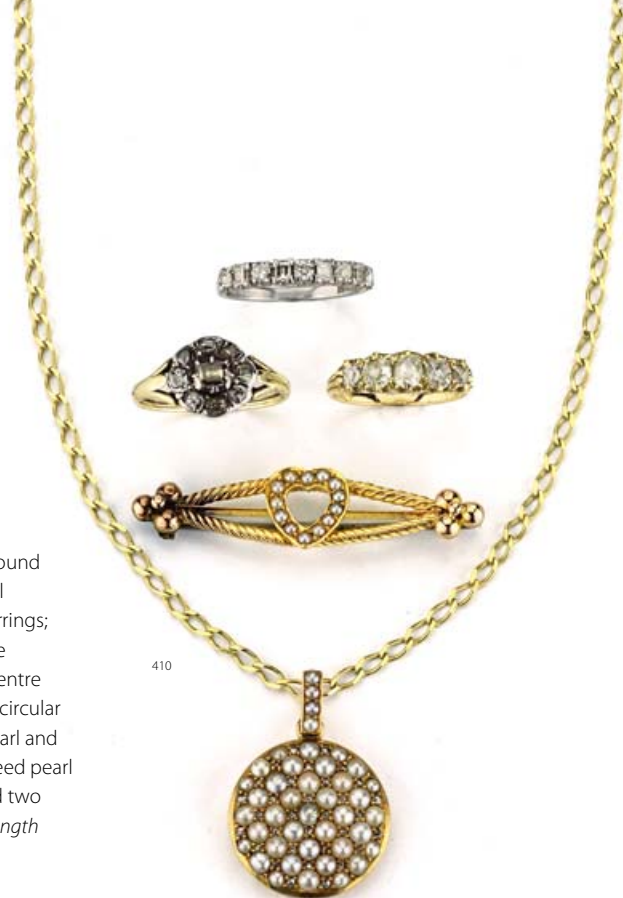
R1 500–2 000

409

Amethyst, cultured pearl and gold bead necklace

length approximately 535mm; a pink, grey and cream freshwater pearl necklace, strung with cultured and button-shaped pearls, *length approximately 445mm*; a freshwater pearl and crystal quartz bead necklace, *length approximately 390mm*; a strand of graduated South Sea, cultured and freshwater pearls and crystal quartz beads, *length approximately 680mm*; a pink tourmaline, gold bead and button-shaped pearl necklace, *length approximately 510mm*; a faceted citrine bead necklace, *length approximately 410mm*; and a freshwater pearl, quartz and glass bead necklace, *length approximately 500mm* (7)

R2 000–3 000



410

Diamond ring

half hoop, claw-set with five graduated old-cuts, *size M½*; a diamond and platinum half eternity ring, set with round brilliant- and baguette-cut diamonds, *size N*; a diamond ring, designed as a flowerhead, set with old-cut diamonds, *size N*; a Victorian seed pearl and diamond pendant/locket, circular, set with rows of seed pearls interspersed with rose-cut diamonds, to a bale set with seed pearls, *length approximately 30mm*, with associated chain, *length approximately 410mm*; and an Edwardian seed pearl and gold brooch, centrally set with a heart-shaped motif, with rope borders and ball finials, *later pin, width approximately 45mm* (5)

R7 000–8 000

Various properties



411

Pair of diamond and pearl pendant earrings

each pearl suspended from a claw-set round brilliant-cut diamond line weighing approximately 1.30 carats, *post and butterfly fittings, length approximately 55mm (2)*

R14 000–16 000

412

Pearl necklace

composed of two rows of freshwater pearls measuring approximately 12.00mm, to a clasp designed as a flowerhead set with eight-cut diamonds and a pearl, *length of shortest row approximately 555mm*

R20 000–25 000





413

413
**Diamond spray brooch,
London, 1970**

designed as a stylised floral spray with ribbons, set with round brilliant-, baguette- and eight-cut diamonds, weighing approximately 5.50 carats, length approximately 69mm

R30 000–35 000



415

415
Tanzanite and diamond brooch

designed as a stylised flower centring a cushion-cut tanzanite, weighing approximately 1.09 carats, within foliate ribbons embellished with round brilliant-, baguette- and eight-cut diamonds, length approximately 45mm

R25 000–30 000



414

414
Sapphire and diamond bracelet

composed of round brilliant- and eight-cut diamond ribbon and flowerhead articulated links, weighing approximately 4.95 carats, the centre of each flowerhead claw-set with a sapphire, length approximately 171mm

R25 000–30 000



416

416

Unset round brilliant-cut diamond

weighing 2.3350 carats

Accompanied by report number 140106049 from E.G. Laboratory, South Africa, stating that the diamond weighing 2.3350 carats is J in colour and VVS2 clarity

R115 000–125 000

417

Pair of diamond earrings

each claw-set with rows of round brilliant-cut diamonds, weighing approximately 2.60 carats, to a fine arched wire frame, *clip fittings (2)*

R15 000–20 000

418

Diamond necklace

composed of a line of claw-set round brilliant-cut diamonds highlighted with a fringe, the front set with an oval drop tubelined with round brilliant- and marquise-cut diamonds, weighing approximately 7.00 carats, *length approximately 440mm*

R40 000–45 000

419

Art Deco white lacquer, lapis lazuli and silver card case, with import marks for London, Stockwell & Co, 1930

the rectangular hinged cover centred by a lapis lazuli plaque carved with a stylised phoenix and bordered by marcasite detail, with lapis lazuli panels to the front and back, silver-gilt interior, *restorations, width approximately 85mm*

R5 000–7 000





420

420

Ruby and diamond demi-parure

the necklace composed of a graduated series of carved pear-shaped claw-set rubies with a conforming pendant, to x-shaped links set with red and white diamonds, connected to a strand of faceted ruby beads by two round brilliant-cut diamonds, *repairs, length approximately 490mm*; and a pair of pendant earrings en suite, each with two marquise-cut diamonds, *repairs, post fittings, length approximately 45mm (3)*

R40 000–45 000

421

American rhinestone monkey brooch, Hattie Carnegie (1880–1956)

cast as a monkey hanging from a branch, with a rhinestone head and two cabochon red glass eyes, *the reverse with applied maker's label, length approximately 75mm*

R3 000–5 000



421



422

422

American pair of silver and paste dress clips, Saks 5th Avenue, New York

each of stepped geometric outline, millegrain-set with a rhinestone bow against a brickwork red stone ground, *three stones reglued, stamped maker's mark, width approximately 32mm (2)*

R2 000–3 000

423

Diamond and platinum brooch, Chaumet, early 20th century

the circular vacant frame flanked by collet- and line-set old- and baguette-cut diamonds, *apparently unmarked, width approximately 48mm; cased*

R8 000–10 000



423

424

Austrian silver and black enamel minaudière, maker's initials LA, Vienna, post 1922

shaped rectangular, engraved with foliate motifs and diaper panels, the hinged cover with thumbpiece, the gilt interior fitted with mirror, powder and cigarette compartments, with perfume flask, one side with a double ring attachment, cord and lipstick case, the other side with a tassel, *.935 standard, impressed maker's marks, width approximately 60mm (2)*

R8 000–10 000



424



425

425

Ruby and diamond ring

line-set with three vertical bands of emerald- and square-cut rubies, between horizontal bands of claw-set round brilliant-cut diamonds, *size J½*

R6 000–8 000

426

Ruby, sapphire and diamond giardinetto brooch, 1960s

the basketweave vase set with two bands of eight-cut diamonds, issuing sprays of flowers set with *en tremblant* ruby, sapphire and diamond flowerheads, *length approximately 50mm*

R15 000–20 000

427

Ruby necklace

the articulated necklace claw-set with oval-cut rubies, centred by a flowerhead, *length approximately 435mm*

R30 000–35 000



426

427



428

428
Gold belcher-link chain, early 19th century
each textured link highlighted with foliate detail, *length approximately 500mm*

R5 000–7 000

429
Diamond and enamel brooch, 1960s
designed as a flowerhead, with articulated plique-à-jour blue enamel petals, encircling *en tremblant* stamens set with round brilliant-cut diamonds, weighing approximately 1.50 carats, set to a leafy gold stem, *length approximately 65mm*

R15 000–20 000



429

430
Gold, diamond and enamel chain, possibly Russian, 19th century
the shield-shaped blue-enamelled connector claw-set with rose-cut diamonds and embellished with filigree work, to a foliate-link chain, terminating in two *later* tassels with blue-enamelled heads and gold beads, *the connector now fixed, length approximately 910mm*

R35 000–40 000

431
15ct gold figaro-link chain
to an 8ct gold brick-link clasp, *length approximately 525mm*

R1 000–1 500



430



432

Italian 18ct gold seven strand necklace

length of shortest strand approximately 470mm

R48 000–50 000

433

Diamond pendant

tube-set to the centre with a round brilliant-cut diamond weighing approximately 0.80 carat, to a conforming pierced gold frame with bale

R24 000–26 000



434

434

Pair of diamond earrings

each tube-set with a round brilliant-cut diamond weighing approximately 0.40 carat, to a pierced gold frame (2)

R9 500–10 000

435

Diamond and 18ct gold double-hinged bangle

line-set to the front with baguette-cut diamonds, weighing approximately 1.10 to 1.20 carats, *width approximately 60mm*

R18 000–20 000

436

Emerald and 18ct gold double-hinged bangle

line-set to the front with square-cut emeralds, *width approximately 60mm*

R9 000–12 000

437

Ruby and 18ct gold double-hinged bangle

line-set to the front with square-cut rubies, *width approximately 58mm*

R9 000–12 000



438

Sapphire and 18ct gold double-hinged bangle

line-set to the front with square-cut sapphires, width approximately 60mm

R9 000–12 000

439

Italian diamond and 18ct yellow and white gold necklace, Nicolis Cola

composed of alternating figure of eight links in yellow and white gold, highlighted with pavé-set round brilliant cut-diamonds weighing approximately 1.10 carats, length approximately 420mm

R28 000–30 000

440

Pair of emerald, diamond and gold earrings

each hinged and tube-set to the front with three cabochon emeralds, flanked by round brilliant-cut diamond line borders, post fittings (2)

R6 000–8 000

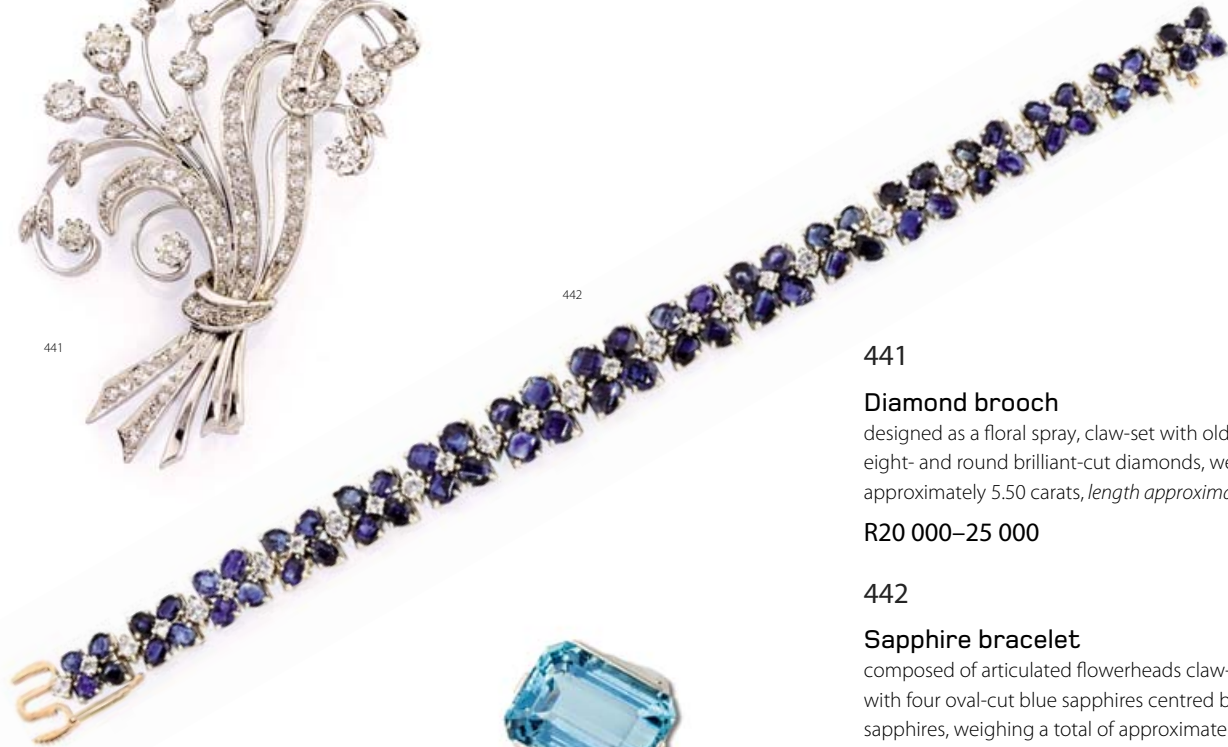


439

440



441



442



443



444

441

Diamond brooch

designed as a floral spray, claw-set with old-, eight- and round brilliant-cut diamonds, weighing approximately 5.50 carats, *length approximately 72mm*

R20 000–25 000

442

Sapphire bracelet

composed of articulated flowerheads claw-set with four oval-cut blue sapphires centred by white sapphires, weighing a total of approximately 20 carats, *length approximately 175mm*

R6 000–8 000

443

Aquamarine and platinum ring

centring an emerald-cut aquamarine weighing approximately 13.12 carats, with stepped shoulders, *size N½*

R35 000–40 000

444

Engraved silver case

rectangular, overall engraved with a foliate motif, with onyx thumbpiece and gilt interior, *stamped '935', 85g all in, 85mm wide*

R4 000–6 000

445

Diamond single stone ring

claw-set with a round brilliant-cut diamond, weighing approximately 1.30 carats, *size L*

R65 000–70 000



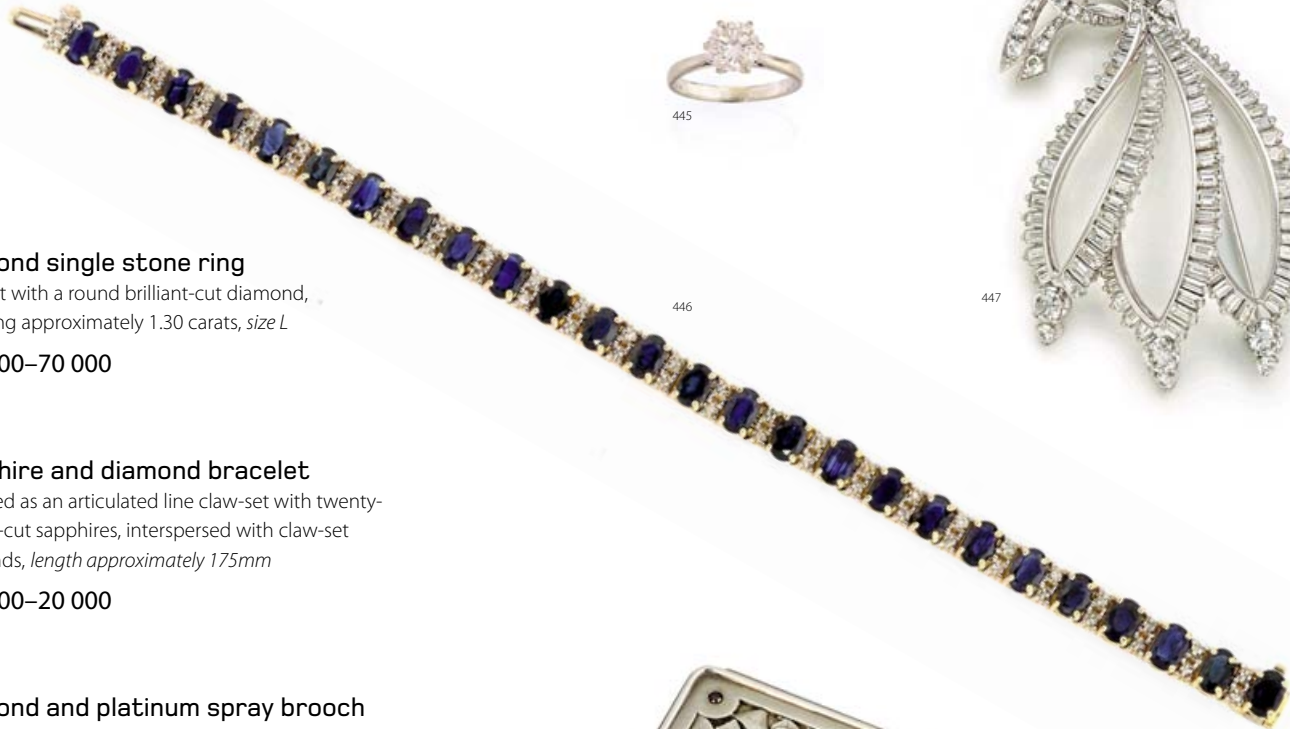
445

446

Sapphire and diamond bracelet

designed as an articulated line claw-set with twenty-six oval-cut sapphires, interspersed with claw-set diamonds, *length approximately 175mm*

R15 000–20 000



446

447

Diamond and platinum spray brooch

of stylised foliate design, set with round brilliant- and baguette-cut diamonds, weighing approximately 9.44 carats, *length approximately 71mm*

R110 000–115 000



447

448

Austro-Hungarian Jugendstil silver card case, probably Karl Knillinger, Vienna, early 20th century

rectangular, the hinged cover composed of four shaped panels decorated with roses in relief, highlighted with cabochon turquoise, sapphire, ruby and garnet stones, gilt interior, .950 standard, 90g all in, *width approximately 70mm*

R8 000–10 000



448

449

Art Deco black lacquer, gold and silver-gilt box, Cartier

rectangular, the black enamel body inlaid in gold with stylised leaves, the hinged cover applied with a claw-set carved sapphire in the form of a flowerhead, gilt interior, engraved with 'Cartier, Made in France' and the numerals '1982', with maker's mark for Auguste Peyroula, length approximately 73mm

R60 000–80 000

450

Cultured black pearl necklace

composed of two rows of black pearls of peacock tint, measuring approximately 10.00 to 12.00mm, to a clasp set with an oval brown topaz enclosed by a border of half pearls, one half pearl repaired, length of shortest row approximately 550mm

R30 000–40 000

451

Diamond single stone ring

claw-set with a princess-cut diamond, weighing approximately 1.10 carats, to a platinum band, size J½

R50 000–55 000



452

Lady's aquamarine and diamond bracelet watch, Roy King, London, 1964

set with a Bueche-Girod movement, the rectangular silvered dial with baton markers, manual winding nickel lever movement, case and dial signed, the hinged oval cover claw-set with aquamarines and round brilliant-cut diamonds, the shoulders set with eight-cut diamonds, weighing approximately 1.50 carats, to an articulated bracelet claw-set with aquamarines, weighing approximately 11.00 carats, case stamped WG 4731 68335, *inner circumference approximately 157mm*

R20 000–25 000



452

453

Aquamarine and diamond ring

the emerald-cut aquamarine flanked by claw-set round brilliant- and eight-cut diamonds, *size M*

R30 000–35 000



453

454

Diamond single stone ring

claw-set with a step-cut diamond, weighing 1.790 carats, *size M*

Accompanied by report number 154535 from The Jewellery Council of South Africa stating that the diamond weighing 1.790 carats is G in colour and VS1 in clarity

R100 000–110 000



454

455

French Art Deco silver, coquille d'oeuf and blue lacquer ruby-mounted cigarette case

rectangular, the arced corners and straps in coquille d'oeuf enamel highlighted with rubies, with gilt interior, .950 standard, *width approximately 68mm; associated Tiffany box*

R25 000–30 000



455



456



457

458



459

456

**Blue and yellow sapphire and diamond
bee brooch, Schwartz, Johannesburg**

the body tube-set with two oval-cut yellow and blue sapphires, the wings claw-set with round brilliant-cut diamonds, to a yellow and white gold body, *stamped maker's mark, width approximately 40mm*

R12 000–15 000

457

Diamond ring

designed as a flowerhead, tube-set to the centre with an oval-cut fancy light brown diamond weighing approximately 1.45 carats, enclosed by round brilliant- and eight-cut diamonds, *size M½*

R25 000–30 000

458

**18ct yellow and white gold and
diamond necklace**

the flat curb-link chain highlighted with four white gold bar spacers, two pavé-set with twelve round brilliant-cut diamonds, weighing approximately 0.24 carat, *length approximately 425mm*

R20 000–25 000

459

Lady's 18ct gold Panthère wristwatch, Cartier, Ref W25022B9

square cream dial, black Roman numerals, secret signature at X, blued steel hands, cabochon sapphire-set crown, jewelled nickel-lever movement, mono-metallic balance, case, dial and movement signed, 8057917 06131, with 18ct gold integral Cartier brick-link bracelet and double deployant clasp, *spare links provided, inner circumference approximately 148mm*, with presentation case and outer card case

R50 000–55 000



460

460

Sapphire and diamond necklace

claw-set with two pear-shaped sapphires surmounted by three round brilliant cut-diamonds, to a knife-edge bar and fine chain, *length approximately 400mm*

R3 000–4 000



461

461

Sapphire and diamond necklace

tube-set to the centre with four cabochon sapphires, weighing approximately 2.00 carats, flanked by trios of round brilliant-cut diamonds, weighing approximately 1.00 carat, to a curb-link chain, *length approximately 395mm*

R20 000–25 000



462

462

Victorian gold locket

the oval hinged cover applied with the initials 'APD', *length approximately 68mm*

R5 000–6 000

463

18ct gold double cable-link chain

interspersed with gold balls, *some repairs, length approximately 1150mm*

R6 000–7 000



463



464

Imperial topaz cross, 19th century, retailed by Wartski

with shaped rectangular-cut imperial topaz single-stone arms, centring a *later* square-cut topaz, *length approximately 50mm*, set to a ring and chain; with Wartski maroon leather fitted case

R50 000–60 000



465

Red enamel, sapphire, diamond and gold egg pendant, Victor Mayer for Fabergé, 1989–2009

the front claw-set with a pear-shaped sapphire enclosed by c-scrolls highlighted by four diamonds, set to a fixed ring, edition 174/1000, *enamel chipped, length approximately 20mm*, with presentation box and case

R8 000–10 000



466

Italian gold fancy-link chain, UnoAerre, Arezzo

length approximately 470mm

R7 000–9 000

467

9ct gold miniature double photograph frame, Jacques Cartier, Cartier

rectangular, with hinged engine-turned covers and two cabochon ruby-mounted thumbpieces, *engraved with 'Cartier' and the numerals '2744', with maker's mark 'JC' for Jacques Cartier, London import mark, length approximately 48mm*

R30 000–35 000



467

468

Victorian 15ct gold chain

composed of rings and flattened links applied with foliate and line decoration, *length approximately 385mm*

R5 000–7 000



468

469

Gilt-metal and smokey quartz seal

the rectangular matrix set to a foliate mount, *height approximately 40mm*

R2 000–3 000



469

470

Art Deco silver, carnelian, marcasite and suede evening bag

the ruched brown suede headed by a pierced rectangular marcasite and carnelian plaque centred by the initials 'MKR', to a dome-shaped carnelian clasp, the cream-coloured silk interior fitted with a purse, with loop handle, *age related wear, apparently unmarked, length approximately 190mm*

R6 000–8 000



470

471

Sapphire necklace

the articulated necklace claw-set with oval-cut sapphires, centred by a flowerhead, *one stone lacking, length approximately 435mm*

R25 000–30 000



471

472

Art Deco jade, black lacquer and silver pill box, Cartier

circular, the cover with jade ring pull, *minute chips to the rims, engraved with 'Cartier Paris', the numerals '1803' and '42'*

R18 000–24 000

473

French Art Deco black lacquer and marcasite compact

the rectangular black enamel cover applied with a circular medallion set with the initials 'CBN' in marcasite within a green enamel border, the gilt interior with a powder compartment and mirror, *some marcasite loss, minor damage, stamped 'Orahic, Made in France, 32,' French mark, width approximately 48mm*

R1 500–2 000

474

Diamond nine-stone ring

claw-set with three stepped raised rows of round brilliant-cut diamonds, weighing approximately 2.15 carats, with pierced canted shoulders, *size U*

R15 000–16 000



472



473



474

475

475

Tsavorite and diamond line bracelet

box-set with an articulated line of round brilliant-cut diamonds, weighing approximately 1.80 carats, and round-cut tsavorites, weighing approximately 1.70 carats, *length approximately 175mm*

R20 000–22 000

476

Pair of quartz and diamond pendant earrings

each claw-set with a pear-shaped quartz, weighing approximately 10 carats, suspended from a smaller quartz to a pavé-set diamond and gold hoop, *length approximately 40mm (2)*

R4 000–6 000



476

477

477

Art Deco silver, chalcedony, marcasite and suede evening bag

the tucked dark brown suede headed by a pierced marcasite and chalcedony fitting, to a conforming clasp, the front tongue with applied marcasite initials 'CL', the green silk interior fitted with a purse and a mirror, the reverse with loop handle, *age related wear, length approximately 145mm*

R5 000–7 000





478

478

Pair of emerald, diamond and ruby earrings, Schwartz, Johannesburg

the octagonal frame tube-set with three emeralds and a ruby, enclosed by pavé-set round brilliant-cut diamonds, weighing approximately 2.00 carats, *maker's mark, emeralds showing wear, post and clip fittings (2)*

R12 000–15 000



479

479

Emerald and gold bracelet

composed of geometric links tube-set with square- and emerald-cut emeralds, joined by arched textured links, *length approximately 182mm*

R20 000–25 000



480

480

Emerald and gold brooch, 1970s
designed as a stylised flower, highlighted with claw-set emeralds, *width approximately 49mm*

R8 000–10 000

481

15ct gold cable-link chain
length approximately 1600mm

R7 000–8 000



483



482

Tri-colour gold chain

set to a lobster claw clasp, *length approximately 835mm*

R7 000–8 000

482

483

Green tourmaline and gold pendant

the gold ball tube-set with twenty round-cut green tourmalines weighing approximately 7.00 carats, *diameter approximately 25mm*

R3 000–4 000

484

Pair of emerald, diamond and gold earrings

each curved rectangular, line-set with alternating oval-cut emeralds, weighing approximately 1.15 carats, and square-cut diamonds, weighing approximately 0.80 carat, *post and clip fittings (2)*

R15 000–20 000

485

Emerald, diamond and gold necklace

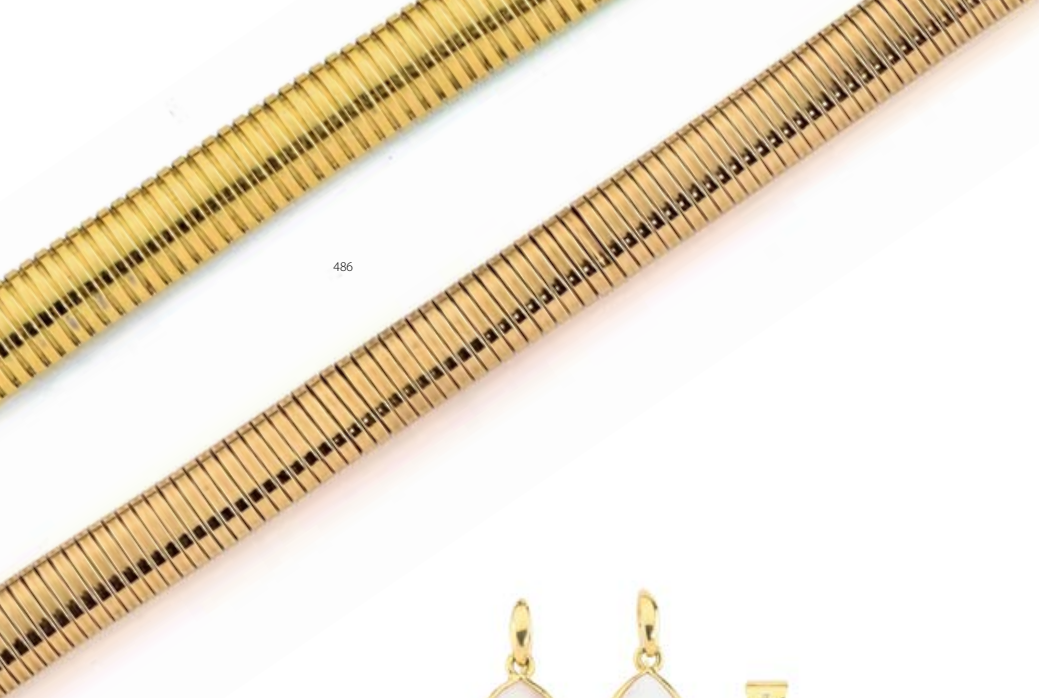
set to the front with an open hexagonal plaque pavé-set with round brilliant-cut diamonds flanking a claw-set heart-shaped emerald, weighing approximately 3.50 carats, to a box-link chain, *length approximately 400mm*

R45 000–50 000



484

485



486

486

9ct gold collar necklace and bracelet

each of gas-pipe design, *necklace length approximately 335mm; bracelet length approximately 185mm* (2)

R15 000–20 000



487

487

Mabé pearl and diamond pendant and earrings

the pear-shaped mabé pearl pendant drop surmounted by three claw-set marquise-cut diamonds, set to a bale embellished with a further marquise-cut diamond, *length approximately 35mm*; and a pair of earrings *en suite, hoop fittings* (3)

R9 000–12 000



488

488

Pair of multi-gem and mabé pearl pendant earrings

each collet-set with a cabochon simulated sapphire, to a pavé-set diamond loop, to an oval-cut amethyst weighing approximately 2.50 carats, to a mabé pearl, terminating in a pear-shaped tourmaline weighing approximately 2.00 carats, *post and clip fittings, length approximately 75mm* (2)

R40 000–45 000



489

489

Simulated sapphire pendant

the claw-set emerald-cut simulated sapphire set to a pierced foliate frame, *associated* bale, *length approximately 35mm*

R2 000–3 000

490

Simulated sapphire and gold bracelet

the four oval-cut simulated sapphires set to pierced foliate mounts and an articulated brick-link bracelet, *length approximately 185mm*

R3 000–4 000



491

491

Diamond single-stone ring, Niessing

the tension-set round brilliant-cut diamond weighing approximately 0.96 carat to an 18ct rose-gold polished band, *engraved maker's mark, NIESSING, SUPLA, numerals C.0346A, size Q½*

R46 000–48 000



492

492

Pink tourmaline ring, David Batchelor, Durban

claw-set with an emerald-cut pink tourmaline, weighing approximately 20.00 carats, to a plain pink gold band, *size M½*

R15 000–18 000



493

493
**Paste and glass bead gilt-metal
 flapper's sash pin, 1930s**

composed of three oval links united by articulated lines of paste and coloured glass beads to a conforming fringe, two stones lacking, length approximately 200mm

R1 500–2 000

494
Silver and metal charm bracelet

the silver curb-link chain suspending forty-three silver and metal charms, with a heart-shaped padlock clasp, length approximately 190mm

R3 000–4 000



494

495
**Burr walnut travelling timepiece,
 van Cleef and Arpels, 1970s**

white enamel circular dial, Roman numerals and baton markers, with flip cover, dial diameter approximately 30mm, with leather case

R8 000–10 000

***496**
Coral bead necklace

composed of two rows of graduated coral beads, to a marcasite and silver clasp, length of shortest row approximately 470mm

R4 000–5 000



495

*497

Pair of coral and diamond pendant earrings, Nigel Milne Ltd

each surmount millegrain-set with a diamond bow, to a pear-shaped coral drop, hoop fittings, length approximately 30mm; cased (2)

R12 000–15 000

498

German Art Deco silver, carnelian, marcasite and suede evening bag

the brown suede fitted to an engraved silver frame, headed by a geometric design of marcasite, carnelian and onyx, with a conforming clasp, silk interior, suede handle, age related wear, apparently unmarked, length approximately 170mm

R7 000–9 000



497



496



498



499



500

499

Lady's 18ct white gold, diamond and onyx Polo wristwatch, Piaget, 1988, Ref GOA 10511

the circular dial with vertical bands of onyx and pavé-set diamonds, faceted dauphine hands, diamond-set bezel, quartz movement, mono-metallic balance, case and dial signed, to a leather strap and 18ct white gold Piaget buckle, *length approximately 200mm*

R30 000–35 000

500

Pearl and diamond necklace

set to the front with a wheel-shaped pendant, tube-set to the centre with a black diamond, the rim tube-set with fancy coloured diamonds, the spokes with round brilliant-cut diamonds, to a single row of pearls, measuring approximately 9.00 to 9.50mm, *length approximately 455mm*

R15 000–20 000

501

Art Deco silver, green, black and red lacquer case, with import marks for London, probably PH Vogel & Co, 1926

the rectangular body with stylised foliage against a green ground, with engraved silver borders and conforming thumbpiece, gilt interior inscribed 'E.M. Brook', *width approximately 85mm*

R12 000–15 000



501



502

502

Art Deco diamond and black lacquer compact

square, the front with foliate diamond-set corners and thumbpiece, the centre millegrain-set with old-cut diamonds with the initials 'FEM', the gilt interior with circular depression and mirror, *some diamond loss, approximately 68mm square, with leather sleeve*

R35 000–40 000

503

Diamond single stone ring

claw-set with a round brilliant-cut diamond, weighing approximately 2.50 carats, to a basket setting and plain band, *size M½*

R75 000–80 000



503

504

Lady's diamond and platinum cocktail watch, 1930s

shaped rectangular silvered dial with Arabic numerals, manual winding anchor-lever movement, millegrain-set old-cut diamond articulated shoulders, to a double cord strap with folding clasp, *length approximately 165mm, width approximately 11mm*

R10 000–12 000

505

Jade bead necklace

composed of a single strand of graduated jade beads, *length approximately 390mm*

R3 000–4 000



504



505



***506**

Coral branch necklace, probably Italian

length approximately 525mm

R1 500–2 000

507

Art Deco black, red and coquille d'oeuf lacquer cigarette box

the hinged cover with geometric motifs, enclosing a red lacquer and cedarwood-lined interior, *minor chips to the rim, length approximately 105mm*

R30 000–40 000

508

Art Deco chrome, black enamel and bakelite card case

rectangular, inlaid with geometric borders, coral-coloured thumbpiece, the interior lined with pigskin, *width approximately 85mm*

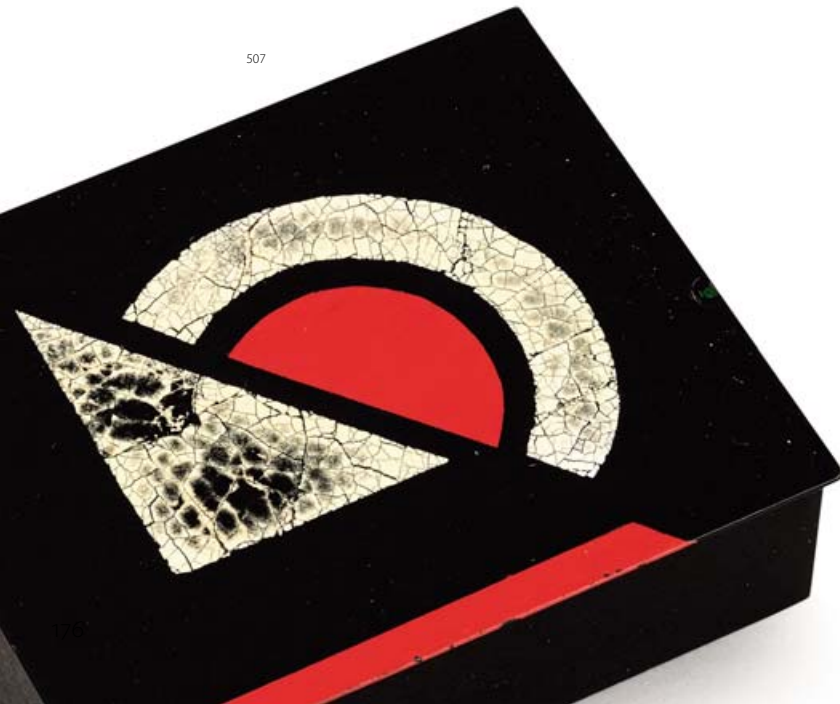
R2 000–3 000

509

Pair of diamond and platinum dress clips, Collingwood Ltd, circa 1925

each pierced plaque set with baguette-, square-, eight- and old-cut diamonds, weighing approximately 2.50 carats in total, *width approximately 46mm; cased (2)*

R18 000–20 000





509



510

510

Edwardian diamond and platinum brooch

the rectangular openwork plaque collet-set with a central diamond weighing approximately 0.25 carat, enclosed by eight- and rose-cut diamonds weighing approximately 0.80 carat, millegrain-set throughout, width approximately 40mm

R9 000–12 000

511

French Art Deco white metal, black, red and coquille d'oeuf lacquer cigarette case

the front with geometric design, gilt interior, stamped 'Made in France, 11914', with French mark, width approximately 78mm

R40 000–50 000



511

512

French Art Deco black and coquille d'oeuf lacquer cigarette case

rectangular with canted corners, the black body with a coquille d'oeuf border to the hinged cover, gilt interior, minor wear to the reverse corners, stamped 'Made in France, 6779, 82', French mark, width approximately 85mm

R20 000–25 000



512

513

Cultured pearl, diamond and yellow sapphire demi-parure, Charles Greig, Cape Town

the necklace composed of three rows of cultured pearls, measuring approximately 4.50mm, collet-set with oval-cut yellow sapphires, enclosed by a border of eight-and round brilliant-cut millegrain-set diamonds, the largest central plaque with a pearl and diamond drop, to a conforming clasp, the diamonds weighing approximately 8.00 carats, *length approximately 448mm*; a pair of earrings en suite, tube-set with a cushion-shaped yellow sapphire, with a detachable pearl and diamond drop, total diamond weight approximately 2.50 to 2.80 carats, *post and clip fittings, length approximately 37mm*; and a ring of similar design, *size M½ (4)*

R100 000–110 000



513



514

514

Pearl and diamond ring

centrally set with a pearl, measuring approximately 12.50mm, enclosed by alternating arcs of round brilliant- and tapered baguette-cut diamonds, weighing approximately 2.00 carats, to pierced shoulders, *size M*

R18 000–20 000

515

18ct gold bracelet

composed of five hinged pierced rectangular panels cast with branches and leaves, *length approximately 185mm*

R30 000–35 000



516

516

14ct gold bracelet

composed of textured links, *length approximately 205mm*

R8 000–10 000

517

Lady's diamond and 18ct gold wristwatch, Piaget, Ref 9197N21, 184227, circa 1970

circular champagne-coloured dial, black baton markers, bezel set with two rows of round brilliant-cut diamonds weighing approximately 1.96 carats, 18 jewel nickel-lever movement, mono-metallic balance, dial signed, with integral Piaget fancy-link bracelet and clasp, *inner circumference approximately 160mm*

R40 000–50 000



517



518

518

Cultured pearl and diamond necklace

composed of two rows of cultured pearls, measuring approximately 7.50 to 8.00mm, to a white gold centrepiece claw-set with round brilliant-cut diamonds weighing approximately 0.55 carat, suspending a pearl and diamond drop weighing approximately 0.20 carat, to a white gold clasp, *length approximately 380mm*

R15 000–20 000



519

519

Pair of mabé pearl and diamond earrings

each collet-set mabé pearl enclosed by a border of round brilliant-cut diamonds weighing approximately 1.20 carats, *clip fittings (2)*

R9 000–12 000

520

Diamond butterfly brooch

the pierced gold framework claw-set with round brilliant-cut diamonds, weighing approximately 2.75 carats, *width approximately 25mm*

R18 000–20 000



520

521

Ruby, diamond and 14ct gold necklace

the curb-link chain set with three oval-cut diamond and ruby links, *length approximately 375mm*

R28 000–30 000



521

522

Cultured pearl and gold necklace

composed of abstract gold links divided by pearls measuring approximately 7.00 to 7.50mm, *length approximately 830mm*

R8 000–10 000



522



523

523

9ct gold snake-link necklace

the centre set with a bead, *length approximately 1110mm*

R8 000–9 000

524

Gold vinaigrette, apparently unmarked

with tapering hexagonal sides, the whole engraved with flowerheads and foliage, with a detachable circular grille, *later ring attachment, length approximately 18mm*

R5 000–7 000



524

526

Pair of Russian enamel and sapphire cufflinks, St Petersburg, 1908–1917

the square white enamel with crossing foliate arcs and tube-set with a cabochon sapphire, to a 14ct gold frame, *maker's mark indistinct, possibly AA, the terminals 14mm square (2)*

R12 000–15 000

525

Lady's 18ct gold De Ville wristwatch, Omega, 1970s

oval, the champagne-coloured dial with baton markers, to an integral bracelet and Omega clasp, *repairs to strap, length approximately 155mm*

R10 000–15 000



526

527

18ct gold hunting cased keyless lever watch, W Bennett & Co, London, circa 1871, of South African interest

case stamped with maker's initials 'L.W.', most probably for Louis Weill, London, 1871, with matte gilded movement No 62644, the case engraved with the initials 'JM' and the gold cuvette engraved 'Presented to Mr James Harrison, by EM Litkie on the occasion of his marriage with his Daughter. Kimberley. 11th July 1888', bio-metallic compensation balance, blued steel spiral spring, signed and numbered, white enamel dial, Roman numerals, subsidiary seconds, blued steel hands, *enamel dial with minor chip at III, diameter approximately 40mm*

R8 000–10 000

NOTES

Edward Litkie is recorded as a working jeweller at 12 Bree Street, Cape Town from 1866-1867 in Welz, Stephan. (1976) *Cape Silver and Silversmiths*, Cape Town: A A Balkema. Page 135.



527

528

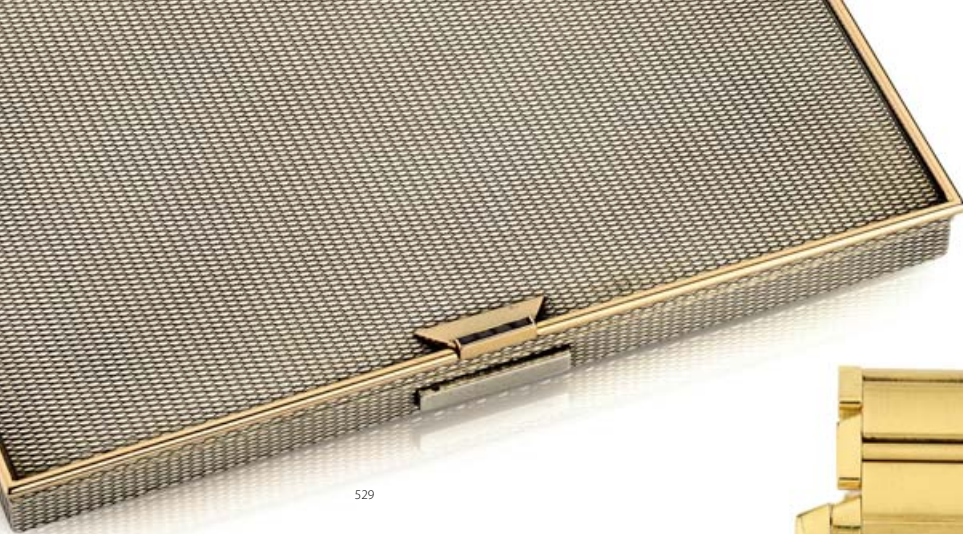
Silver and sapphire-mounted cigarette case, Dunhill, London

with engine-turned rectangular case, the cover mounted with line-set step-cut sapphires, gilt interior, *stamped 'Sterling, Dunhill, London' 150g all in, width approximately 84mm*

R10 000–12 000



528



529

529

Silver, gold and sapphire-mounted cigarette case, Mauboussin, Paris, 1920s

rectangular, with engine-turned body, the hinged cover mounted with a moulded gold border and line-set step-cut sapphire thumbpiece, the interior with *later* inscription, stamped 'Mauboussin, Paris, 12449', boxed (2)

R14 000–16 000

530

Gentleman's 18ct gold Tank Francaise wristwatch, Cartier, Ref 1840 CC485575

square silvered guilloché enamel dial, black Roman numerals, secret signature at VII, blued steel hands, date aperture at VI, cabochon sapphire-set crown, jewelled nickel-lever movement, mono-metallic balance, case, dial and movement signed, with 18ct gold integral Cartier link bracelet and double deployant clasp, *inner circumference approximately 170mm*, with presentation case and outer card case

R70 000–80 000



530

531

Gentleman's 18ct gold Constellation wristwatch, Omega, 1970s

24 jewels, nickel lever manual winding movement, gyromax balance, adjusted to heat, cold, isochronism and five positions, circular champagne dial with gold and black enamel baton markers, applied gold logo, black hands, date aperture at three o'clock, dial and case signed, to an integrated 18ct gold textured bracelet and Omega folding clasp, *crown replaced, length approximately 197mm*

R15 000–30 000



531

532

Gentleman's stainless steel Gran Turismo XL, Mille Miglia, Chopard, Ref 16/8997

24 jewels, nickel lever mechanical self-winding movement, adjusted to five positions, with 46 hour power reserve, certified chronometer, circular black matte dial, oversized luminescent white numerals at 12 and 6, luminescent hands, the seconds dial with red enamel arrow tip, date aperture at three o'clock, outer calibrated 60 second ring, Chopard screw-down crown, sapphire crystal display back secured by eight screws, case, dial and movement signed, stainless steel Chopard double deployant clasp, Chopard rubber strap, *movement No. 56073, case stamped 1120953, diameter approximately 44mm, with presentation case*

R35 000–40 000



532

533

Pair of enamel and gold cufflinks, Victor Mayer for Fabergé, 1989–2009

the oval terminals with striped blue enamel highlighted with *fleur-de-lis*, edition 53/300, cased; and a pair of onyx and gold-plated cufflinks, Mont Blanc, oval (4)

R9 000–12 000



533
part lot

534

9ct gold curb-link chain

with bolt-ring clasp, *length approximately 500mm*

R6 000–7 000

535

9ct gold curb-link chain

length approximately 690mm

R7 000–8 000

536-540

No Lots



534

535