

J. Volsche



The Vineyard Hotel, Conference Centre,  
Newlands, Cape Town  
Monday 21 October - 5.30pm

## Day Session Paintings

Lots 531-670

## International and South African Art



531

531

**Charles JONES**

BRITISH 1936-1892

*Sheep Grazing on a Headland*

signed with the artist's monogram;  
signed and dated 1879 on the reverse

oil on canvas

34,5 by 49,5cm

R15 000 – 20 000

532

**English School**

LATE 19TH CENTURY

*The Ratter*

oil on canvas

44 by 59,5cm

R5 000 – 8 000

533

**Follower of George ARMFIELD**

BRITISH 19TH CENTURY

*Terriers Rabbitting; Waiting for Master,*  
a pair

oil on canvas

each 23,5 by 28,5cm (2)

R6 000 – 8 000



532



533

part lot

534

**Marino MARINI**

ITALIAN 1901-1980

*Bunter Reiter II, 1976 (L123)*

signed and numbered 14/75 in the margin

colour lithograph

93 by 67,5cm

**R20 000 – 30 000**

**LITERATURE**

Guastalla, Giorgio and Guido. (1993)  
*Marino Marini Catalogue Raisonné (Engravings and Lithographs) 1919-1980*, Los Angeles and Livorno: Leslie J Sacks and Graphis Arte Editions. Illustrated on page 245, figure L123.



534



535

535

**John Henry AMSHEWITZ**

SOUTH AFRICAN 1882-1942

*Isobel McLaren as Donna Clara in The Duenna*

signed, dated 1924, inscribed with the title and 'RBA London'

oil on canvas

139 by 98,5cm

**R30 000 – 50 000**

536

**William Mitcheson TIMLIN**

SOUTH AFRICAN 1892-1943

*Still Life with Delphiniums and a Dog of Fo*

signed and dated 1927

oil on arched wood panel

80 by 99cm

**R20 000 – 30 000**



536

537

**Robert Gwelo GOODMAN**

SOUTH AFRICAN 1871-1939

*Himalayas, India*

signed  
chalk pastel on paper  
57 by 70cm

R50 000 – 60 000



537

538

**Maud Frances Eyston  
SUMNER**

SOUTH AFRICAN 1902-1985

*Winter Landscape*

signed  
watercolour  
45 by 58cm

R20 000 – 30 000



538

539

**Gregoire Johannes  
BOONZAIER**

SOUTH AFRICAN 1909-2005

*A Venetian Canal*

signed and dated 1973  
watercolour  
37 by 27,5cm

R15 000 – 20 000



539



540

**William Mitcheson TIMLIN**

SOUTH AFRICAN 1892-1943

*Chalk Cliffs Near Brighton*

signed, dated 1910 and inscribed  
with the title  
watercolour  
25,5 by 34cm

R6 000 – 8 000

541

**Nita (Pauline Augusta  
Wilhelmina) SPILHAUS**

SOUTH AFRICAN 1878-1967

*Anacapri*

signed with the artist's monogram  
oil on cardboard  
23 by 30cm

R15 000 – 20 000

542

**Maud Frances Eyston  
SUMNER**

SOUTH AFRICAN 1902-1985

*View Through a Window,  
Montparnasse, Paris*

signed; inscribed 'France Paris  
Montparnasse' in pencil on the reverse  
charcoal and watercolour  
45 by 60cm

R10 000 – 15 000

543

**Otto KLAR**

SOUTH AFRICAN 1908-1994

*Tower Bridge, London*

signed and dated 1952  
oil on board  
53 by 57cm

R30 000 – 40 000



541



543

544

**Alexander Cecil PODLASHUC**

SOUTH AFRICAN 1930-2009

*Die Priester se Bokkraal, Samos, Griekeland*

signed

oil on board

62 by 90cm

R15 000 – 20 000



544

545

**Marjorie WALLACE**

SOUTH AFRICAN 1925-2005

*Tending Sheep, Crete*

signed

oil on canvas

53,5 by 81cm

R30 000 – 40 000



545

546

**Sydney CARTER**

SOUTH AFRICAN 1874-1945

*Free State Dam*

signed; inscribed with title in pencil on the reverse

oil on canvas laid down on board

21 by 28,5cm

R7 000 – 9 000



547

**Tinus (Marthinus Johannes)  
DE JONGH**

SOUTH AFRICAN 1885-1942

*Figure by a Foot Bridge*

signed

oil on canvas

48 by 59,5cm

**R25 000 – 35 000**



547



548

548

**Robert Gwelo GOODMAN**

SOUTH AFRICAN 1871-1939

*Hermanus*

signed with the artist's initials

pastel on paper laid down on board

33 by 25,5cm

**R20 000 – 30 000**



549

549

**Robert Gwelo GOODMAN**

SOUTH AFRICAN 1871-1939

*Distant Mountains, Wemmershoek*

signed

pastel on paper laid down on card

42,5 by 53,5cm

**R40 000 – 60 000**





550

550

**Dorothy Moss KAY**

SOUTH AFRICAN 1886-1964

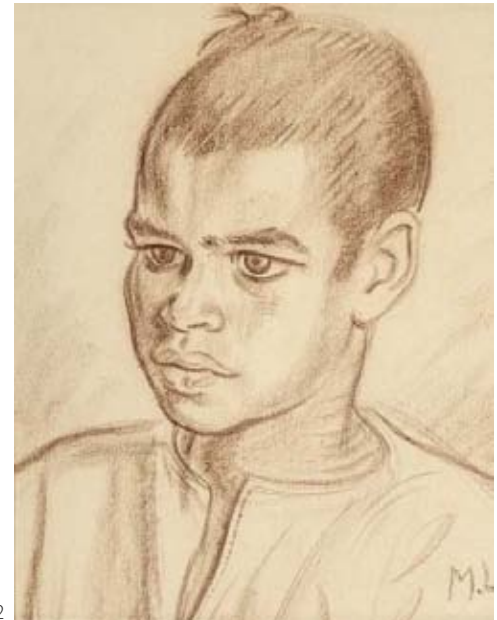
*The Ochre Blanket*

signed and inscribed with the title in pencil  
charcoal and watercolour over pencil  
30 by 39cm

**R15 000 – 20 000**

**NOTES**

cf. Reynolds, Marjorie. (1989) *Dorothy Kay: Everything You Do Is A Portrait Of Yourself, A Biography*, Rosebank: Alec Marjorie Reynolds. A similar example is mentioned on page 161.



552

© The Estate of Maggie Laubser | DALRO

551

**Wolf KIBEL**

SOUTH AFRICAN 1903-1938

*Figures in a Rural Setting*, three

each inscribed 'W. Kibel, signed by Mrs F Kibel'  
charcoal on paper  
21 by 13cm; 21 by 11,5cm; 21 by 13,5cm (3)

**R18 000 – 24 000**

552

**Maggie (Maria Magdalena) LAUBSER**

SOUTH AFRICAN 1886-1973

*Portrait of a Boy*

signed with the artist's initials  
conté on paper  
33 by 26cm

**R15 000 – 20 000**

553

**Jan Ernst Abraham VOLSCHENK**

SOUTH AFRICAN 1853-1936

*The Langebergen from a Rocky Perch, Riversdale C.P.*

signed and dated 1926; signed, dated and inscribed with the title on the reverse  
oil on canvas  
39 by 45cm

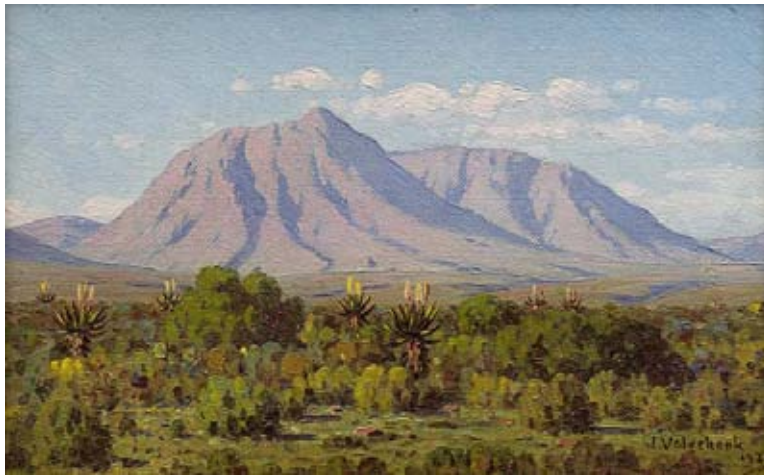
**R40 000 – 60 000**



553



554



555



556

554

**Jan Ernst Abraham VOLSCHENK**

SOUTH AFRICAN 1853-1936

*Mozambiquerskop Evening, Riversdale*

signed and dated 1934; signed, dated and inscribed with the title on the reverse

oil on canvas

24,5 by 39,5cm

**R30 000 – 40 000**

555

**Jan Ernst Abraham VOLSCHENK**

SOUTH AFRICAN 1853-1936

*Landscape*

signed and dated 1925

oil on canvas laid down on board

20 by 32cm

**R20 000 – 30 000**

556

**Jan Ernst Abraham VOLSCHENK**

SOUTH AFRICAN 1853-1936

*Glimpse of the River*

signed and dated 07; signed, dated and inscribed with the title on the reverse

oil on canvas

20,5 by 14cm

**R20 000 – 30 000**





557



558

557

**Jacob Hendrik PIERNEEF**

SOUTH AFRICAN 1886-1957

*Hardekoolboom*

signed and inscribed with the title  
in pencil

pencil on paper

31 by 43cm

**R25 000 – 35 000**

558

**Jacob Hendrik PIERNEEF**

SOUTH AFRICAN 1886-1957

*Thabina*

signed, dated 1928 and inscribed with  
the title and 'N.T.' in pencil

conté on paper

32 by 39,5cm

**R25 000 – 35 000**

559

**Jacob Hendrik PIERNEEF**

SOUTH AFRICAN 1886-1957

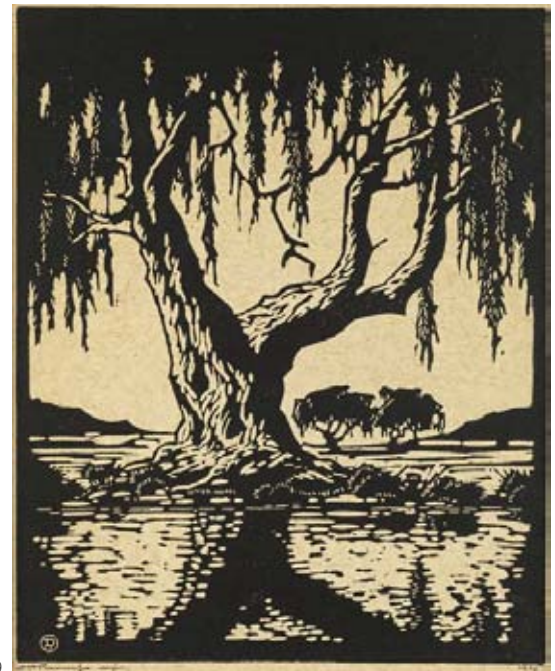
*Wilgerboom in die Somer (Nilant 79)*

signed with the artist's monogram  
in the plate, signed, dated 1925 and  
inscribed 'impr' in pencil in the margin

linocut

37,5 by 30cm

**R25 000 – 35 000**



559

560

**Ernst Karl Erich MAYER**

SOUTH AFRICAN 1876-1960

*Landscape with Trees*

signed and dated '35

oil on board

22 by 40cm

**R12 000 – 16 000**

561

**William Mitcheson TIMLIN**

SOUTH AFRICAN 1892-1943

*Cottages in an Autumn Landscape*

signed, signed with the artist's

monogram and dated 1928

oil on board

58 by 72cm

**R25 000 – 35 000**

562

**William Mitcheson TIMLIN**

SOUTH AFRICAN 1892-1943

*Road to the Farm*

signed

oil on canvas

60 by 106cm

**R10 000 – 15 000**

563

**Otto KLAR**

SOUTH AFRICAN 1908-1994

*Mountainous Landscape*

signed

oil on canvas laid down on board

45,5 by 60,5cm

**R20 000 – 30 000**



561



563



564

**Tinus (Marthinus Johannes)  
DE JONGH**

SOUTH AFRICAN 1885-1942

*Mountains Through the Trees*

signed

oil on canvas

32,5 by 48cm

**R30 000 – 40 000**



564

565

**Willem Hermanus COETZER**

SOUTH AFRICAN 1900-1983

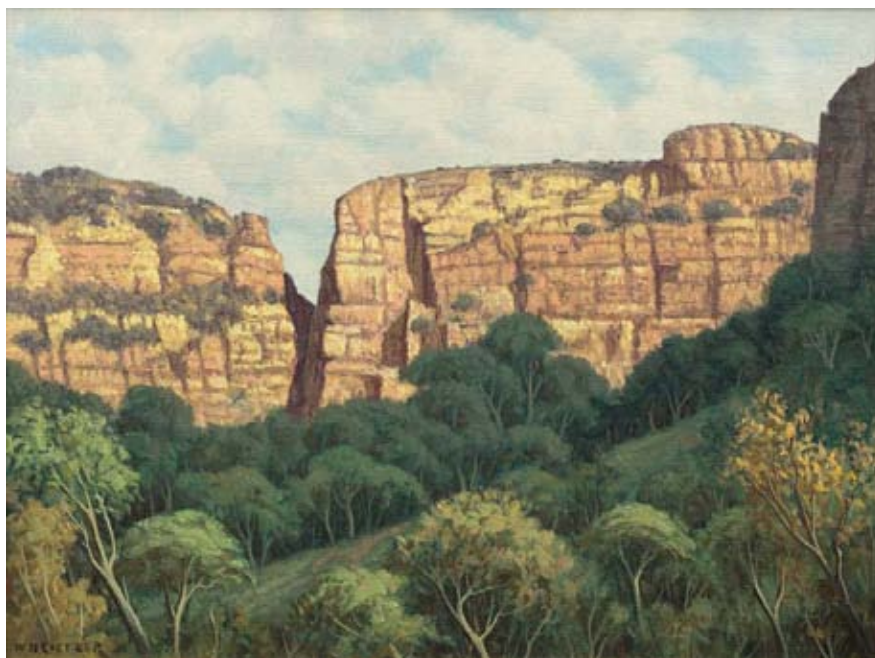
*Table Mountain from Blaauwberg  
Strand, Milnerton*

signed and dated 64; inscribed with  
the title and 'St James on the extreme  
left in the distance' on the reverse

oil on artist's board

19 by 26,5cm

**R20 000 – 30 000**



566

566

**Willem Hermanus COETZER**

SOUTH AFRICAN 1900-1983

*Rustenburg Kloof*

signed; signed and inscribed with the  
title on the reverse

oil on canvas laid down on board

44,5 by 60cm

**R25 000 – 35 000**

567

**Edward ROWORTH**

SOUTH AFRICAN 1880-1964

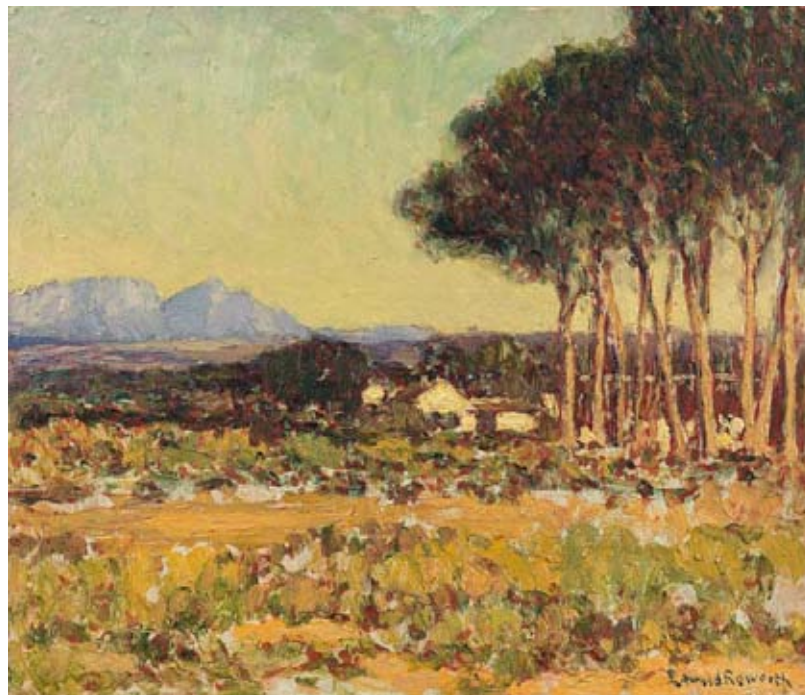
*Cape Landscape*

signed

oil on board

43,5 by 50,5cm

**R12 000 – 16 000**



567

568

**Walter Whall BATISS**

SOUTH AFRICAN 1906-1982

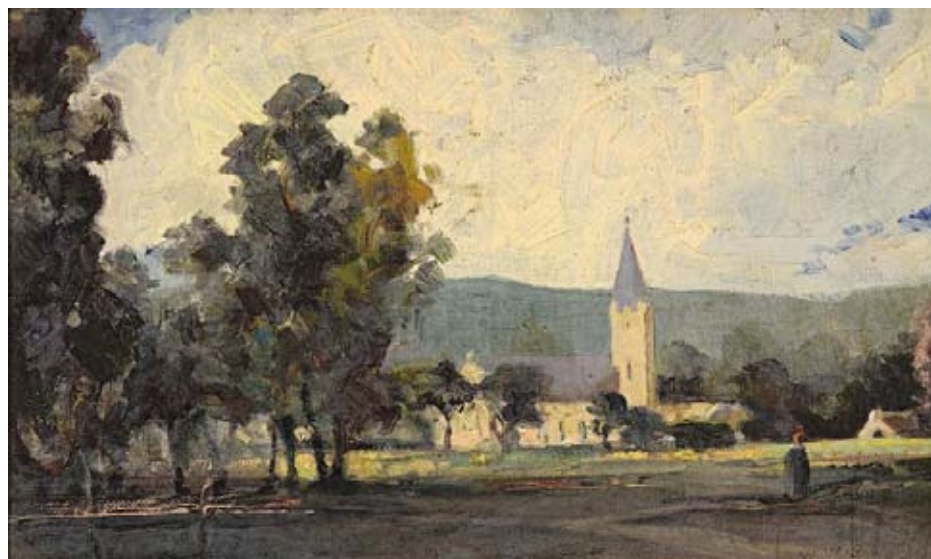
*Somerset East*

signed

oil on canvas laid down on board

21,5 by 35,5cm

**R20 000 – 30 000**



568

569

**Walter Whall BATISS**

SOUTH AFRICAN 1906-1982

*Landscape*

signed; signed, dated Aug 1938 and  
inscribed 'To the Sculptor I Kleyn' on  
the mount

pastel and watercolour

16 by 29cm

**R8 000 – 10 000**





570

570

**Pranas DOMSAITIS**

SOUTH AFRICAN 1880-1965

*Two Figures*

signed with the artist's monogram

oil on board

60,5 by 38,5cm

**R20 000 – 30 000**

571

**Pranas DOMSAITIS**

SOUTH AFRICAN 1880-1965

*Woman and Children*

signed; inscribed with the artist's

name and 'No 17' on the reverse

oil on board

41 by 42,5cm

**R30 000 – 40 000**



571



572



573

572

**Gerard BHENGU**

SOUTH AFRICAN 1910-1990

*Veld Fire II*

signed

watercolour

22,5 by 33cm

**R30 000 – 40 000**

**EXHIBITED**

Durban Art Gallery, Durban,  
28 January to 26 February 1996

Tatham Art Gallery,  
Pietermaritzburg, 30 November  
1995 to 7 January 1996, *Gerard  
Bhengu: A Retrospective Exhibition*,  
catalogue number 82

573

**Gerard BHENGU**

SOUTH AFRICAN 1910-1990

*Veld Fire I*

signed

watercolour

25 by 35,5cm

**R30 000 – 40 000**

574

**Otto KLAR**

SOUTH AFRICAN 1908-1994

*Huts and Figures in The  
Drakensberg*

signed and dated 1941

oil on canvas laid down on board  
50,5 by 50,5cm

**R45 000 – 55 000**



574



575

**Cecil HIGGS**

SOUTH AFRICAN 1898-1986

*Klein Strand Landskap*

signed and dated 66

oil on canvas

12,5 by 40cm

R25 000 – 35 000



576

**Willem Hermanus COETZER**

SOUTH AFRICAN 1900-1983

*Seascape*

signed and dated 51

oil on canvas laid down on board

49,5 by 59cm

R15 000 – 20 000



577

**Piet KANNEMEYER**

SOUTH AFRICAN 1927-1995

*Bo-Kaap*

signed and dated 60

oil on canvas laid down on board

40 by 50cm

R18 000 – 24 000



578

578

**Gregoire Johannes  
BOONZAIER**

SOUTH AFRICAN 1909-2005

*Bo-Kaap*

signed and dated 1943

oil on cardboard

24,5 by 40cm

R40 000 – 60 000

579

**Terence John MCCAWE**

SOUTH AFRICAN 1913-1978

*Mosque on a Hill*

signed and dated 60

oil on canvasboard

49 by 59cm

R20 000 – 30 000



579



580

**Piet (Pieter Gerhardus)  
VAN HEERDEN**

SOUTH AFRICAN 1917-1991

*Boland Landscape*

signed

oil on canvas

39 by 49cm

**R35 000 – 45 000**



580

581

**Titta FASCIOTTI**

SOUTH AFRICAN 1927-1993

*A Cape Village*

signed and indistinctly dated 81

oil on board

34,5 by 49,5cm

**R20 000 – 30 000**



581

582

**Titta FASCIOTTI**

SOUTH AFRICAN 1927-1993

*Houses Along the Roadside*

signed

oil on canvasboard

24 by 34cm

**R8 000 – 12 000**



582

583

**Titta FASCIOTTI**

SOUTH AFRICAN 1927-1993

*Kaapse Dorp*

signed

oil on canvas laid down on board

17 by 25cm

**R15 000 – 20 000**



583



584



585



586

584

**Conrad Nagel Doman THEYS**

SOUTH AFRICAN 1940-

*Township Scene - Western Cape*

signed and dated 2009; signed, dated  
and inscribed with the title in English and  
Afrikaans on the reverse

pastel on paper

25,5 by 30,5cm

**R20 000 – 30 000**

585

**Gregoire Johannes BOONZAIER**

SOUTH AFRICAN 1909-2005

*Table Bay from District Six, Cape Town*

signed and dated 1973; signed and  
inscribed with the title on the reverse

pen and ink and wash

37,5 by 28cm

**R15 000 – 20 000**

586

**Gregoire Johannes BOONZAIER**

SOUTH AFRICAN 1909-2005

*Die Spookhuis, Wynberg, Kaap*

signed, dated 1988 and inscribed with the  
title; inscribed 'Niemand wil Spookhuise  
koop nie!' on a piece of paper adhered to  
the reverse

watercolour and pastel

37 by 54cm

**R15 000 – 20 000**



587

**François KRIGE**

SOUTH AFRICAN 1913-1994

*Fishing Boats on Hout Bay Beach*

signed

oil on canvas laid down on board

20 by 27cm

R25 000 – 35 000

588

**Titta FASCIOTTI**

SOUTH AFRICAN 1927-1993

*Seascape*

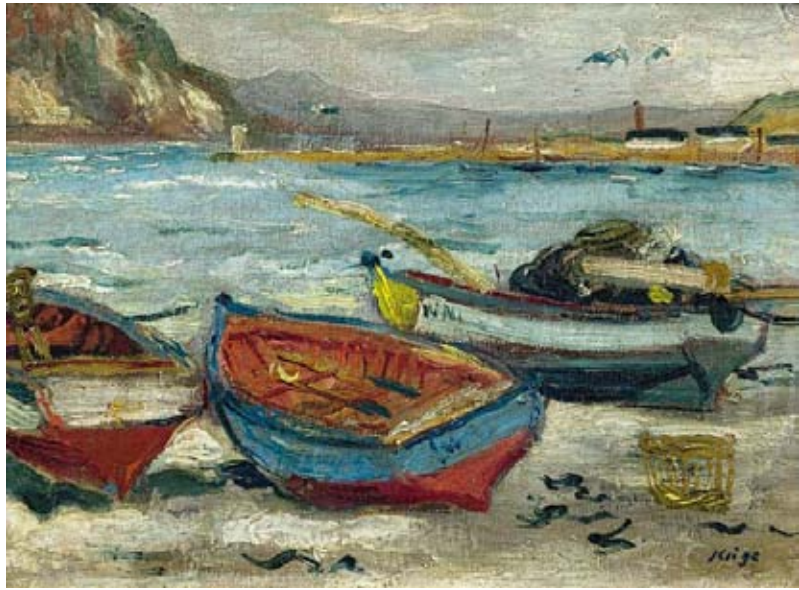
signed and dated 71

oil on canvas laid down on board

34 by 49,5cm

R25 000 – 35 000

587



588



589

**Titta FASCIOTTI**

SOUTH AFRICAN 1927-1993

*Garden Landscape*

signed and dated 73

oil on board

49,5 by 74,5cm

R15 000 – 20 000

590

**Marjorie WALLACE**

SOUTH AFRICAN 1925-2005

*Marjorie and Jan's Sitting Room*

signed

oil on canvas

65 by 81cm

R40 000 – 60 000

591

**Claude Marie Madeleine  
BOUSCHARAIN**

SOUTH AFRICAN 1922-

*Departure*

signed and dated 70

acrylic on canvas

51 by 68,5cm

R20 000 – 30 000

**NOTES**

Proceeds from the sale of this lot to  
benefit the AVA Artreach Fund.



590



591





592

592

**Nel (Petronella Margaretha)  
ERASMUS**

SOUTH AFRICAN 1928-

*Convergence*

signed and dated 05  
acrylic on board  
69 by 99cm

R10 000 – 15 000

593

**Marianne PODLASHUC**

SOUTH AFRICAN 1932-2006

*In the Workshop*

signed  
oil on board  
121 by 121cm

R20 000 – 30 000



593

594

**Hennie (Hendrik Christiaan)  
NIEMANN SNR**

SOUTH AFRICAN 1941-

*Still Life*

signed and dated 2000

oil on board

58 by 39,5cm

**R18 000 – 24 000**



594

595

**François KRIGE**

SOUTH AFRICAN 1913-1994

*Still Life of Bow, Arrows and  
Decorated Gourds*

signed

oil on canvas

33 by 59,5cm

**R30 000 – 40 000**



595



596

**Eugene LABUSCHAGNE**

SOUTH AFRICAN 1921-1990

*Autumn Composition*

signed and dated 1957

oil on canvas

52 by 62cm

**R30 000 – 40 000**



596

597

**Louis Khehla MAQHUBELA**

SOUTH AFRICAN 1939-

*Symbolic Figures, Animals and Forms*

signed and dated '69

mixed media on paper

51,5 by 61,5cm

**R25 000 – 35 000**



597

598

**Josef OSSER**

SOUTH AFRICAN 1908-1988

*Still Life with a Green Bottle, Fruit and a Plant*

signed and dated '65

oil on board

60,5 by 80cm

**R10 000 – 15 000**



598

599

**Pieter VAN DER WESTHUIZEN**

SOUTH AFRICAN 1931-2008

*Still Life with Roses in a Blue and White Vase*

signed and dated 81

mixed media

58,5 by 47,5cm

**R15 000 – 20 000**

600

**David Johannes BOTHA**

SOUTH AFRICAN 1921-1995

*Namaqualand*

signed

oil on canvas laid down on board  
29,5 by 50cm

R40 000 – 60 000



600

601

**Piet (Pieter Gerhardus)  
VAN HEERDEN**

SOUTH AFRICAN 1917-1991

*Western Province Landscape*

signed; signed and inscribed with the  
title on the stretcher

oil on canvas  
54,5 by 69,5cm

R35 000 – 50 000

NOTES

Inscribed on the reverse 'bought from  
the art collectors club, Pretoria, 1971'



601

602

**Titta FASCIOTTI**

SOUTH AFRICAN 1927-1993

*Karoo Landscape*

signed and dated 89

oil on canvas laid down on board  
17 by 24,5cm

R15 000 – 20 000



603

**Conrad Nagel Doman THEYS**

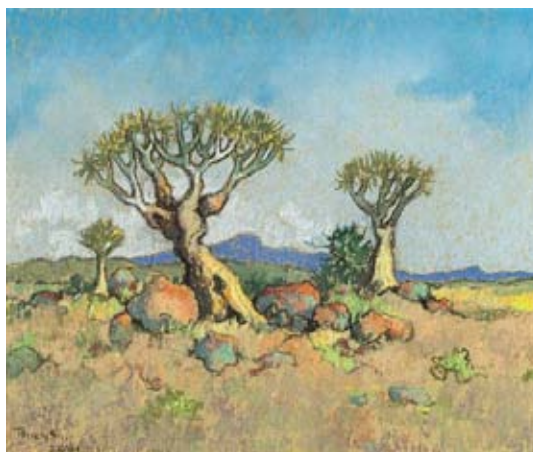
SOUTH AFRICAN 1940-

*Quiver Trees - Niagramoeb-plains*

signed and dated 2001; signed and  
inscribed with the title on the reverse  
pastel on paper

25,5 by 30cm

**R20 000 – 30 000**



603

604

**Adriaan Hendrik BOSHOFF**

SOUTH AFRICAN 1935-2007

*Winter Study*

signed; inscribed with the title on the  
reverse

oil on board

16,5 by 18,5cm

**R15 000 – 20 000**



604

605

**Alexander ROSE-INNES**

SOUTH AFRICAN 1915-1996

*Landscape with Quiver Trees*

signed and dated 66

oil on canvas laid down on board

28,5 by 42cm

**R20 000 – 30 000**



605

606

**Erik (Frederik Bester Howard)  
LAUBSCHER**

SOUTH AFRICAN 1927-2013

*Sketch for Painting - June Morning  
Wesberg*

signed, dated 1999 and inscribed with  
the title in pencil  
chalk pastel on paper  
22,5 by 36,5cm

**R12 000 – 18 000**

NOTES

Proceeds from the sale of this lot to  
benefit the AVA Artreach Fund.

607

**Paul DU TOIT**

SOUTH AFRICAN 1922-1986

*Abstract Landscape*

signed  
oil on canvas laid down on board  
28,5 by 39,5cm

**R40 000 – 60 000**



606



607



608

**Cecil Thornley STEWART**

SOUTH AFRICAN 1881-1967

*Port St Johns*

signed

oil on board

60 by 90,5cm

**R12 000 – 16 000**



609

609

**Errol Stephen BOYLEY**

SOUTH AFRICAN 1918-2007

*Seascape*

signed

oil on board

59,5 by 75cm

**R20 000 – 30 000**



610

610

**Errol Stephen BOYLEY**

SOUTH AFRICAN 1918-2007

*Knysna Lagoon*

signed; inscribed with the title on the reverse

oil on canvas laid down on board

49,5 by 75cm

**R20 000 – 30 000**



611

611

**Adriaan Hendrik BOSHOFF**

SOUTH AFRICAN 1935-2007

*The Dark Pool*

signed

oil on canvas laid down on board

21 by 30,5cm

**R20 000 – 30 000**

612

**Marjorie WALLACE**

SOUTH AFRICAN 1925-2005

*Fishwives*

signed; inscribed with the title on the reverse  
oil on canvas

71,5 by 58,5cm

**R30 000 – 40 000**

613

**Peter CLARKE**

SOUTH AFRICAN 1929-

*Father is coming home soon*

signed, dated 1971, numbered 5/24 and  
inscribed with the title in pencil in the margin  
linocut

image size: 38 by 30,5cm

**R14 000 – 18 000**

**EXHIBITED**

Standard Bank Gallery, Johannesburg and  
Iziko South African National Gallery, Cape  
Town, *Listening to Distant Thunder: The Art of  
Peter Clarke*, 2011/2012

614

**Peter CLARKE**

SOUTH AFRICAN 1929-

*Wind op die Duine*

signed, dated Oct. 1961, numbered 4/12 and  
inscribed with the title in pencil in the margin  
etching

image size: 20 by 12cm

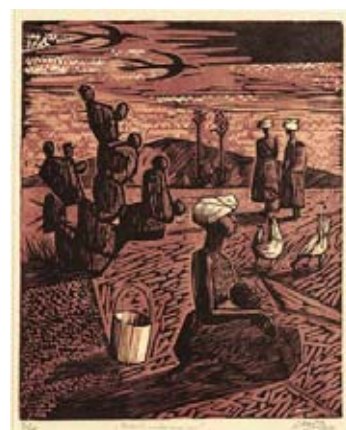
**R20 000 – 30 000**

**NOTES**

cf. Hobbs, Philippa, and Rankin, Elizabeth.  
(2011) *Listening to Distant Thunder: The Art of  
Peter Clarke*, Johannesburg: Standard Bank  
of South Africa. Another example from the  
edition is illustrated on page 82.



612



613

© Peter Clarke | DALRO



614

© Peter Clarke | DALRO



615

© Peter Clarke | DALRO

615

**Peter CLARKE**

SOUTH AFRICAN 1929-

*Figures in the Rain*

signed and dated 3.4.1960

watercolour

25,5 by 18,5cm

**R30 000 – 40 000**



616

**Peter CLARKE**

SOUTH AFRICAN 1929-

*Thistledown*

signed, dated 1999, inscribed with the title and numbered 27/30 in pencil in the margin

linocut

image size: 28 by 38cm

R14 000 – 18 000

617

**Kenneth BAKER**

SOUTH AFRICAN 1931-1995

*View of Table Mountain from District Six*

signed

oil on board

54 by 44,5cm

R8 000 – 12 000

618

**Helmut STARCKE**

SOUTH AFRICAN 1935-

*Alles Sal Reg Kom*

signed and dated '61; signed and inscribed with the title on the reverse

acrylic on board

88,5 by 63cm

R20 000 – 30 000

619

**Pieter VAN DER WESTHUIZEN**

SOUTH AFRICAN 1931-2008

*The Dove of Peace*

signed and dated '07

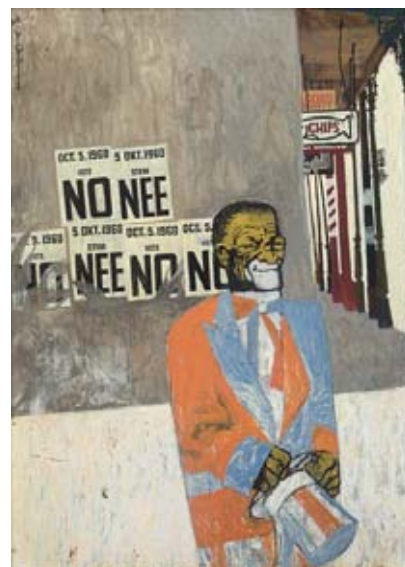
pastel on paper

49 by 59cm

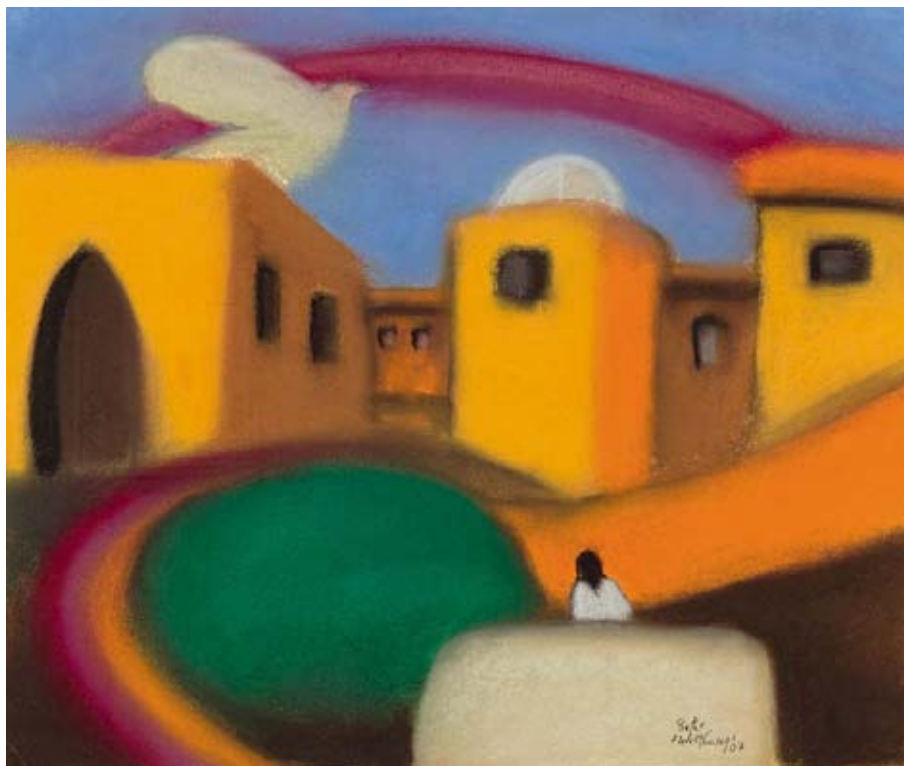
R50 000 – 70 000



617



618



619

620

**Frans Martin CLAERHOUT**

SOUTH AFRICAN 1919-2006

*Bridal Couple in a Donkey-drawn Cart*

signed

oil on board

50 by 60,5cm

**R25 000 – 35 000**

621

**Frans Martin CLAERHOUT**

SOUTH AFRICAN 1919-2006

*The Fisherman*

signed

oil on board

49,5 by 59,5cm

**R30 000 – 50 000**

622

**Frans Martin CLAERHOUT**

SOUTH AFRICAN 1919-2006

*Mother and Child*

signed

oil on board

45 by 59cm

**R20 000 – 30 000**

623

**Frans Martin CLAERHOUT**

SOUTH AFRICAN 1919-2006

*Time for Tea*

signed

oil on board

50,5 by 60cm

**R25 000 – 35 000**



620



621



624

**Maurice Charles Louis  
VAN ESSCHE**

SOUTH AFRICAN 1906-1977

*Portrait of a Boy*

signed  
oil on board  
30 by 19,5cm

R30 000 – 40 000



624

625

**Hennie (Hendrik Christiaan)  
NIEMANN SNR**

SOUTH AFRICAN 1941-

*Boy*

signed and dated 98  
oil on paper laid down on board  
30 by 25cm

R12 000 – 16 000



625

626

**Amos LANGDOWN**

SOUTH AFRICAN 1930-

*Children Playing*

signed  
oil on canvas laid down on board  
42,5 by 57cm

R20 000 – 30 000



626

627

**Julian MOTAU**

SOUTH AFRICAN 1948-1987

*Two Men Relaxing*

signed and dated '66  
oil on canvas laid down on board  
49 by 59,5cm

R10 000 – 15 000

628

**Alexander ROSE-INNES**

SOUTH AFRICAN 1915-1996

*Reading in Bed*

signed and dated 67

oil on canvas

50 by 29,5cm

**R60 000 – 80 000**



628



629

629

**Alexander ROSE-INNES**

SOUTH AFRICAN 1915-1996

*Thoughtful*

signed

charcoal and pastel on paper

63 by 48,5cm

**R25 000 – 35 000**



630

630

**Alexander ROSE-INNES**

SOUTH AFRICAN 1915-1996

*Gesinnetjie*

signed

oil on board

39,5 by 49,5cm

**R30 000 – 40 000**





631

verso



633

634



635



631

**Frans Martin CLAERHOUT**

SOUTH AFRICAN 1919-2006

*Mother and Child, recto; Mother Nursing, verso*

signed on both sides  
oil on panel  
230,5 by 81,5cm

**R35 000 – 50 000**

632

**Edoardo Daniele VILLA**

SOUTH AFRICAN 1915-2011

*Pendant*

bronze  
8,5 by 5cm

**R3 000 – 4 000**

633

**Kenneth BAKKER**

SOUTH AFRICAN 1926-1988

*Spherical Forms No. 18*

signed and dated 71; signed, inscribed with the  
title and the artist's address on the reverse  
mixed media relief construction  
61 by 45cm

**R12 000 – 16 000**

634

**Frieda OLLEMANS**

SOUTH AFRICAN 1915-

*Woman*

signed with the artist's monogram and dated 1980  
carved wood, on a square base  
height: 112cm, including base

**R15 000 – 20 000**

635

**Lippy (Israel-Isaac) LIPSHITZ**

SOUTH AFRICAN 1903-1980

*Head*

signed and dated '37  
walnut, mounted on a circular base  
height: 33cm, including base

**R25 000 – 35 000****PROVENANCE**

The Jack and Helene Kahn Collection

**LITERATURE**

Arnott, Bruce. (1969) *Lippy Lipschitz: Biography and Catalogue Raisonné*, Cape Town: AA Balkema. Page 106, number 164.

636

**Cecil Edwin Frans SKOTNES**

SOUTH AFRICAN 1926-2009

*Independence*

signed and dated '74

watercolour

55 by 73,5cm

R18 000 – 24 000



636

© The Estate of Cecil Skotnes | DALRO

637

**Sydney Alex KUMALO**

SOUTH AFRICAN 1935-1988

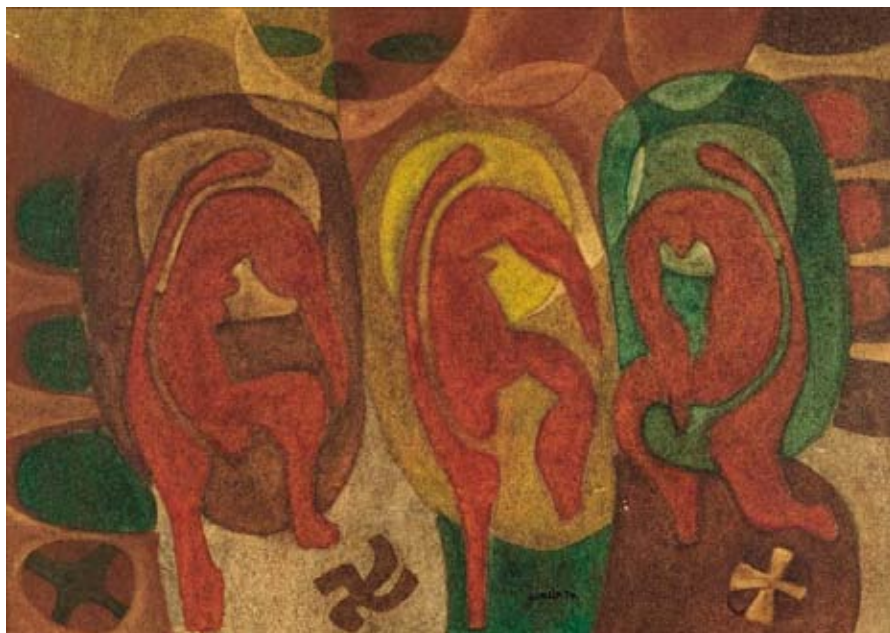
*Three Figures*

signed and dated 74

mixed media on board

51 by 72cm

R20 000 – 30 000



637

638

**Herman Antoine Julien Henri  
VAN NAZARETH**

SOUTH AFRICAN 1936-

*Abstract Landscape*

signed

oil on board

49 by 59,5cm

R8 000 – 12 000





639

© The Estate of Cecil Skotnes | DALRO



640

© The Estate of Cecil Skotnes | DALRO

639

### Cecil Edwin Frans SKOTNES

SOUTH AFRICAN 1926-2009

#### *The Nameless One*

signed

carved, painted and incised wood panel

44 by 27,5cm

**R20 000 – 30 000**

#### LITERATURE

Skotnes, Cecil and Gray, Stephen. (1974) *The Assassination of Shaka*, Johannesburg: McGraw-Hill Book Company. Illustrated as plate 12.

#### NOTES

This is the original block for plate 12 of *The Assassination of Shaka*

640

### Cecil Edwin Frans SKOTNES

SOUTH AFRICAN 1926-2009

#### *The Assassination of Shaka*

A portfolio of forty-three woodcuts by Cecil Skotnes with captions by Steven Gray, 1973, with title and preface, edition limited to 225 copies, this set numbered 75/225, each woodcut signed, dated 73 and numbered 75/223 in pencil in the margin, the title page signed and dated by the artist and signed by the poet, in original linen portfolio

woodcuts in colour

sheet size: 50 by 33cm

**R30 000 – 50 000**



641

641

**Speelman MAHLANGU**

SOUTH AFRICAN 1958-2004

*Circle of Friends*

signed and numbered 15/15

bronze with brown patina

height: 40,5cm

R18 000 – 24 000



642

642

**Colbert MASHILE**

SOUTH AFRICAN 1972-

*Mogoloane*

signed and dated '07; inscribed with the title

on the reverse

oil on canvas

60 by 50cm

R18 000 – 24 000



643

643

**Hennie (Hendrik Christiaan)**

**NIEMANN SNR**

SOUTH AFRICAN 1941-

*Harvesting*

signed and dated 96

oil on paper

33 by 29,5cm

R15 000 – 20 000



644

644

**Hennie (Hendrik Christiaan)**

**NIEMANN JNR**

SOUTH AFRICAN 1972-

*Fragments of Africa*

signed with the artist's initials and dated '06;

signed, dated 2006 and inscribed with the title

on the reverse

oil on canvas

108,5 by 99cm

R60 000 – 80 000



645

**Gail Deborah CATLIN**

SOUTH AFRICAN 1948-

*The Flower Picker*

signed and dated 92; inscribed with  
the artist's name, address and the title  
on the reverse

mixed media on glass

180 by 100,5cm

**R40 000 – 60 000**

646

**Gail Deborah CATLIN**

SOUTH AFRICAN 1948-

*Mosaic Panel*

signed and dated 2004

liquid crystal and resin

88,5 by 79cm

**R30 000 – 40 000**

**LITERATURE**

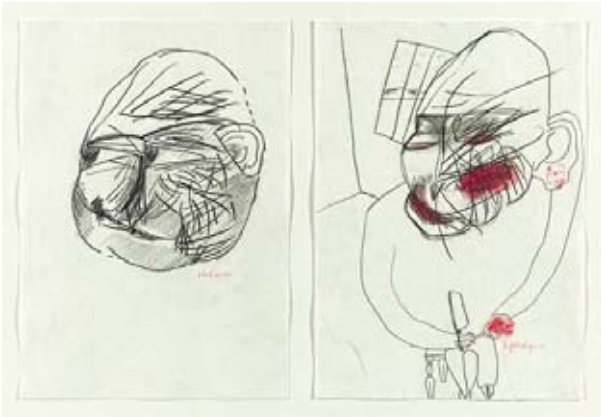
Catlin, Gail; Von Grebner, Fabbriizio  
and Sampson, Lin. (1999) *Liquid Crystal  
Painting*, Cape Town: Stonehaven  
Publications. Illustration plate 22.



645



646



647



648



649

647

**Robert Griffiths HODGINS**

SOUTH AFRICAN 1920-2010

*A Close Shave*, two  
each signed; framed as one  
pencil and pencil crayon wash  
each 29 by 21cm

**R20 000 – 30 000**

**PROVENANCE**

Professor Alan Crump

648

**Christo COETZEE**

SOUTH AFRICAN 1929-2000

*Romantic Head*  
signed, dated 83, numbered 37,  
inscribed with the title and 'Tulbagh,  
Cape, SA'  
mixed media on paper  
62,5 by 50cm

**R10 000 – 15 000**

649

**Robert Griffiths HODGINS**

SOUTH AFRICAN 1920-2010

*Stand-up Comic*  
signed, dated 2002 and inscribed  
with the title in pencil  
watercolour and pastel  
40 by 29cm

**R20 000 – 30 000**

650

**Simon Patrick STONE**

SOUTH AFRICAN 1952-

*Flower in Hair*  
signed and dated 07  
oil on cardboard  
30,5 by 28cm

**R18 000 – 24 000**



650





651

© Jane Alexander | DALRO



652

651

**Jane ALEXANDER**

SOUTH AFRICAN 1959-

*Ghost*

signed, dated 2008, numbered 20/100 and inscribed with the title in pencil on the reverse

pigment print on cotton paper  
image size: 31,5 by 38cm  
sheet size: 45,5 by 50cm

**R6 000 – 8 000****EXHIBITED**

The image *Ghost* has been exhibited as 1 of 54 images projected in black and white as part of the work *Survey: Cape of Good Hope* The Cape Institute for Architecture, Cape Town, *Counter-Currents: Experiments in Sustainability in the Cape Region*, 7 April to 6 May 2010  
La Centrale Électrique, Brussels, *Security: Surveys From the Cape of Good Hope*, 25 March to 21 August 2011  
The Contemporary Art Museum of Houston,

*Surveys: From the Cape of Good Hope*, (a Project of the Museum for African Art), 2012 Cathedral Church of St John the Divine, New York, *Surveys: From the Cape of Good Hope*, 2013

**LITERATURE**

Subirós, Pep (ed.) (2011) *Jane Alexander: Surveys (from the Cape of Good Hope)*, New York: Museum for African Art and Actar. Illustrated on page 65.

Jamal, Ashraf. (2010) "Jane Alexander: Hunger Artist", In *Counter-Currents: Experiments in Sustainability in the Cape Region*, Johannesburg: Jacana Media, in association with the African Centre for Cities, University of Cape Town.

Subirós, Pep (ed.) (2009) *Jane Alexander: On Being Human*, Great Britain: Institute of Advanced Study Durham University. Illustrated on page 23.

**NOTES**

Proceeds from the sale of this lot to benefit the AVA Artreach Fund.

652

**Fred (Frederick Hutchison) PAGE**

SOUTH AFRICAN 1908-1984

*The In-Between Days*

signed, dated 68 and inscribed with the title in pencil in the margin below the mount  
pen and ink and wash on paper laid down on cardboard  
60,5 by 38cm

**R20 000 – 30 000**

653

**Walter Whall BATTISS**

SOUTH AFRICAN 1906-1982

*Orgy*

signed and dated 19.9.81  
pen and ink  
34,5 by 50cm

**R30 000 – 50 000**

654

**Walter OLTMANN**

SOUTH AFRICAN 1960-

*Moth*

signed  
charcoal  
54 by 75cm

R15 000 – 20 000



653

655

**William Joseph KENTRIDGE**

SOUTH AFRICAN 1955-

*Untitled, 2007, from prints for  
William Kentridge Flute*

signed, numbered AP XII/XX, inscribed  
'For Sandile' in pencil in the margin  
and embossed with the Jillian Ross  
chop mark  
sugarlift aquatint, drypoint and  
engraving on Somerset Velvet Soft  
White 300 gsm paper  
image size: 15,4 by 15,7cm  
sheet size: 35 by 26cm

R20 000 – 30 000

LITERATURE

Law-Viljoen, Bronwyn (ed.) (2007)

*William Kentridge: Flute*, Johannesburg:  
David Krut Publishing. Illustrated on  
page 148.



654

656

**Deborah Margaret BELL**

SOUTH AFRICAN 1957-

*Camera on a Tripod with Drawing  
Board*

signed  
white chalk and charcoal on black  
paper  
48 by 68cm

R15 000 – 20 000



655



656





657

657

**Matthew HINDLEY**

SOUTH AFRICAN 1974-

*Scentless Apprentice*

oil on canvas

130 by 130cm

**R20 000 – 30 000**



658

658

**Matthew HINDLEY**

SOUTH AFRICAN 1974-

*Madonna of the Sweet Pea*

signed, dated 2006 and inscribed  
with the title on the reverse

oil on canvas

60 by 50cm

**R18 000 – 24 000**



659

659

**Conrad BOTES**

SOUTH AFRICAN 1969-

*Untitled*

signed and dated 05 in pencil in the margin, embossed with the Artists' Press chop mark  
monoprint and lithograph  
sheet size: 105 by 75cm

**R25 000 – 35 000**



660

660

**Conrad BOTES**

SOUTH AFRICAN 1969-

*Sunday*

signed and dated 05 in pencil in the margin, embossed with the Artists' Press chop mark  
monoprint  
sheet size: 105 by 75cm

**R25 000 – 35 000**

661

**Cecil Edwin Frans SKOTNES**

SOUTH AFRICAN 1926-2009

*The White Monday Disaster*

A portfolio of thirteen woodcuts by Cecil Skotnes with text by Steven Gray, 1975, with title and preface, edition limited to 125 copies and 25 artist's proofs, this set numbered 17/125, each woodcut signed and dated 75 in pencil in the margin, the title page signed by the artist and poet, in original linen portfolio. woodcuts in colour  
sheet size: 56 by 73,5cm

**R20 000 – 30 000**

662-670

**No lots**