

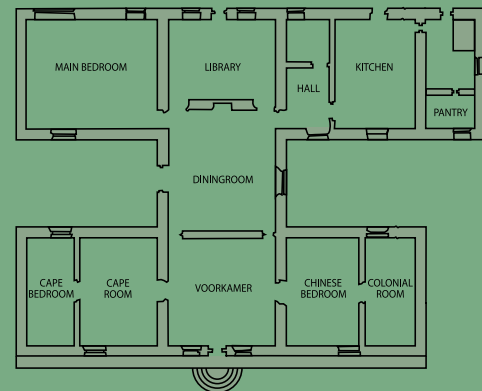




Keerweder, Franschhoek  
Monday 22 October - 5.30pm

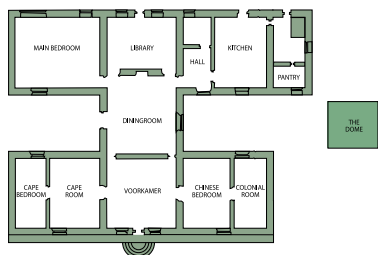
## Session 3

Lots 437-662





## THE DOME



## THE DOME

437

### Circle of Bartholomeus VAN DER HELST

DUTCH 1613-1670

*Portrait of a gentleman, possibly  
Laurence Sverdrup, full-length, in a  
black and white costume, holding  
a letter in his left hand, a dog at his  
feet*

the letter inscribed 'Quid Homine  
Vanius (Why is Man so Vain?),  
Laurentius Sverdrup, \*\*\*\*'

oil on canvas  
210 by 118cm

R30 000 – 50 000

Sold: Christie's, South Kensington,  
10 April 2003, lot 77

438

### A pine wall clock, Huxley, Northlam, 18th century

18cm brass dial with arabic numerals  
and single hand, the corners with  
engraved foliate spandrels, the arch  
engraved Huxley, Northlam, the  
movement with baluster pillars,  
verge escapement and bell-striking  
movement with outside count wheel,  
pendulum and weights, 56cm high

R6 000 – 8 000



438



437



detail

439

**A Dutch brass alms dish, 17th century**  
the centre moulded with two spires from the Land of Canaan enclosed by a double inscription, the broad rim punched with flowerheads and *fleur-de-lys*, *damaged, repaired*, 42,5cm diameter

R5 000 – 7 000

440

**An Indian Colonial teak and rosewood ebonised kist, 19th century**  
the moulded rectangular top above a pierced escutcheon plate embellished with bosses and a lock, the interior with a covered compartment, on four detachable bun feet, 52cm high, 109cm wide, 47,5cm deep

R10 000 – 15 000

441

**A yellowwood bench**  
on bracket supports, 188cm long

R4 000 – 5 000



440

442

**A stinkwood Volkwyn armchair, late 19th/early 20th century**

with spindled back and riempie seat, on ring-turned legs; and a pair of stinkwood Volkwyn side chairs, similar, with side stretchers (3)

R8 000 – 10 000

443

**Three green glass bottles, 19th century**

two with moulded lip, *the tallest 25cm high* (3)

R400 – 600

444

**A group of four green glass Constantia wine bottles, 18th century**

the shoulder of each with seal, *all with damage*, *the tallest 27cm high* (4)

R800 – 1 000

445

**Four green glass bottles, 19th century**

*the tallest 27cm high* (4)

R400 – 600

446

**A green glass Constantia wine bottle, 18th century**

the shoulder with seal, *damaged*, 20cm high; and two further examples, *reduced*, *all with crizzling*, *the taller 16cm high* (3)

R600 – 800

447

**Three Shaft-and-Globe green glass bottles, 18th/19th century**

*the tallest 18cm high* (3)

R500 – 600

448

**A set of six Shaft-and-Globe green glass bottles, modern**

each moulded with a seal with the portrait of a gentleman and the date 1699, 16cm high (6)

R1 000 – 1 500

444



449

## Helmut STARCKE

SOUTH AFRICAN 1935

*Dreams and Nightmares of M. de la Q., #2 (1999)*

signed and dated 99, multi panel (3)  
acrylic on canvas  
180 by 180cm

**R80 000 – 100 000**

This is one of a series of four paintings which Helmut Starcke dedicated to “the woman behind the Governor of the Cape”, Maria van Riebeeck, née De la Quellerie. It forms part of a larger body of work in which the artist’s stated intention was to reclaim something of the drama of the confluence of art and history in the seventeenth century by contrasting the opulence of the Golden Age of Dutch art with the paucity of the colonial visual record of life at the Cape.

*Dreams and Nightmares of M. De la Q., #2* speculates about the frame of mind of Van Riebeeck’s wife, having been transplanted from the exotic Batavia to the barren Cape. Here we see the First Lady graciously receiving the produce of the Company Gardens and the praises and admiration of all who have gathered for this occasion. The chivalrous doffing of hats and the raising of a glass of the best red wine all contribute to the festive atmosphere. However, the obvious sycophantism and the preposterous size of the cabbage are used to humorous effect to raise doubts about the validity of, and the credit for, these achievements.

The painting includes references to well known Dutch artists such as



Gabriel Metsu (1629-1667), Jan Steen (1626-1679), Jan Vermeer (1632-1675) and Gerard ter Borch (1617-1681) to name just a few. It was first exhibited in 2004 on Starcke’s solo exhibition entitled *The Muse of History* at the Old Townhouse on Greenmarket Square in Cape Town. Also exhibited was *Clio, the Muse of History*, painted in 2001, which was acquired by Iziko South African National Gallery and is now part of their permanent collection. Helmut Starcke immigrated to South Africa in 1958 and taught at the University of Cape Town’s Michaelis School of Fine

Art from 1969 until 2000. He was selected for the Venice Biennales in 1964 and 1966 and the São Paulo Biennale in 1969. Since 1963 he has held eleven solo exhibitions and participated in numerous group shows. He is represented in all the major public collections in South Africa as well as in several local and international corporate collections including the Chase Manhattan Bank, New York.

### EXHIBITED

The Old Town House, Cape Town, *The Muse of History*, 18 November 2004 - 3 April 2005



detail

450

**A Batavian silver commemorative salver (Gedachtenisblad), maker's initials SW, mid 18th century**

square with canted corners, the rim moulded with shell and leaf decoration, the centre engraved with the inscription 'Gedachtenisse Van Willem Maunts Cruse Aan Cabo de Goede Hoop Geboren Den 2 July Anno 1671 Tot Batavia Als Oud Bailluw Overledn Den Laatste February Anno 1734', the reverse with further inscription and two paper labels, *restorations*, 1030g, 36cm square

**R20 000 – 30 000**

Silver plates and salvers of this form were popular commemorative gifts in the Dutch East Indies in the eighteenth century. These plates were presented to friends and family members at weddings, important anniversaries and at funerals, usually bearing inscriptions with names and dates.

**LITERATURE**

Guss Röell & Deon Viljoen, *Uit verre streken, The European contact with India, Indonesia, China, Japan and the Cape of Good Hope, 17th-20th Centuries*, Cape Town & Maastricht, June 2010  
*cf. V.O.C.-Zilver, Zilver uit de periode van de Verenigde Oostindische Compagnie, 17de en 18de eeuw*, Collectie Haags Gemeenstemuseum, Mei 1983, where a similar example is illustrated on page 39



detail



450



451

451

**A Batavian silver commemorative salver (Gedachtenisblad), maker's initials SH, mid 18th century, with later Dutch foreign import tax marks for 1814-1953**

shaped square, with pierced shell and foliate border, the reverse with inscription 'Ter Gedagtenis Van Juff Bartha Helena Van Suchtelen, Geboren Tot Batavia, den 13th April A=1710, En Aldaar bert Cen 19th= January A=1743, dud 32 zaaren 9 Maanden En 6 Dagen', restorations, 640g, 31cm square

**R20 000 – 30 000**

**LITERATURE**

cf. *V.O.C.-Zilver, Zilver uit de periode van de Verenigde Oostindische Compagnie, 17de en 18de eeuw*, Collectie Haags Gemeentemuseum, Mei 1983, where a similar example is illustrated on page 38

452

**A Batavian silver cuspidor, apparently unmarked, late 18th century**

of small proportions, the flared neck with petal-shaped rim, the eight-panelled bulbous body raised on a circular foot, minor dents, 175g, 10cm high

**R12 000 – 15 000**

Fa. Dekker Antiquair, Spiegelgracht 9, - 1017 JP Amsterdam, 26th July 2000

**LITERATURE**

Guus Roëll and Deon Viljoen, *Uit verre streken*, June 2008, where a similar small portable model is discussed.

453

**Holland, VOC, two ducatoons or silver riders, 1739**

a doit, dated 1790; and a base metal medallion (4)

**R600 – 800**

454

**A Dutch silver 'Friendship' medallion, 11 February 1815**

the front and reverse with inscriptions, with later annular suspension loop, 15g, 5cm diameter

**R2 000 – 3 000**

455

**A Cape silver-mounted cowrie shell snuff box, maker's mark ID between two stars, late 18th century**

the shell set in a zig-zag border, the hinged base engraved with a stippled border, 8cm wide; and a silver snuff box, late 18th century, oval, engraved with a foliate cartouche enclosed by a floral border, the reverse engraved with the initials "WC", gilt interior, with repairs and holes, 25g, 6cm wide (2)

**R6 000 – 8 000**

Sold: Stephan Welz & Co, Cape Town, 31 March 2004, lot 622



452



455

456

**A Cape silver Shell-and-Thread pattern marrow scoop, Lawrence Twentyman, 19th century**

55g; a Cape silver Fiddle pattern pickle fork, Johannes Lotter, 19th century, 25g; and a Cape silver Old English pattern teaspoon, maker's initials PG, the terminal engraved with an initial, 15g (3)

**R2 500 – 3 000**

The marrow scoop from JH Bourdon-Smith Ltd, 24 Mason's Yard, 13 Duke Street, St. James, London SW1, 20 June 1996



457

**An 'Old English' pattern silver tablespoon, London, 18th century** the terminal engraved with the initials 'TG/TH' and the date '1776', *95g*; a plated tablespoon, 19th century, the reverse of the bowl engraved with flowers; and a George III coin (3)

R700 – 900

These items were discovered in the Keerweder homestead during restoration.

458

**A silver 'Old English' pattern soup ladle, bearing marks for London 1764**  
*195g*

R1 000 – 1 500

459

**An Austrian Hungarian silver milk jug, maker's initials W.W, circa 1820** the bulbous body engraved with a vacant cartouche between stylised foliate borders, *dents to the spout, 175g, 10cm high*; a Dutch silver tea straw, *20g*; a Dutch silver sugar sifter, the pierced bowl moulded with a bird, *20g*; and a Continental plated hexagonal box and cover, the sides engraved with figural panels, gilt interior, raised on three ball feet, *6cm high* (4)

R1 500 – 2 000

460

**Two plated tastevin**

each with handle and thumbpiece, gadrooned and boss borders, *the larger 11,5cm diameter*; and an enamel wine label, 18th century, painted with the inscription 'CAP' within a floral border, *restoration and some chipping, 6cm long* (3)

R2 000 – 3 000

461

**A Dutch Delft manganese tile, 18th century**

painted with the figures of two spies from the Land of Canaan; nine bisque wine labels, later inscribed 'Keerweder', and a quantity of ceramic fragments, 18th/19th century (Qty)

R1 200 – 1 500

462

**A set of six Sheffield plated eggcups, 19th century** each on a gadrooned circular base, *5,5cm high* (6)

R400 – 600

463

**An electroplated coffee pot, 20th century**

with hinged domed cover, applied with a composition handle, *11,5cm high*; an electroplated hot water jug, Harrods, modern, *23cm high*; an American Williamsberg Kirk Stieff pewter coffee pot, modern, *no 149/250, 28cm high*; and a silver sugar bowl, London, 1915, the reeded body raised on a circular foot, *200g, 6cm high* (4)

R1 200 – 1 500

464

**A colonial rootwood and metal-mounted pipe**

the handle composed of three beads carved with faces, with a wooden tobacco jar; an electroplated tobacco pipe stopper; and two Dutch clay pipes (4)

R500 – 700

465

**A brass snuffbox, 19th century** oval, the hinged cover engraved with 'W. Williams', *8cm long*; another, rectangular, with canted corners, *6,5cm long*; a copper and brass example, oval, *6cm long*; two pewter examples, *the larger 8cm long*; a brass shell-shaped covered box, *10cm wide*; and a pewter shell-shaped snuffbox, *5cm wide* (7)

R1 000 – 1 500



Plaque above Dome door

466

**A brass and composition  
snuffbox, 19th century**

circular, the hinged cover engraved with a cartouche and the initials 'MLP'; *7cm diameter*; and an ebonised and gilt-metal-mounted example, late 18th/early 19th century, with lobed base, *4cm high* (2)

R2 000 – 3 000

467

**A Boer War stone tablet in the  
form of a book, 1902**

inscribed 'India Kukul, September 20 1902'; the reverse with inscription, with leather pouch; a bone marrow scoop and toothpick, the terminal in the shape of a crocodile (3)

R400 – 600

468

**Five miniatures of Cape  
furniture, modern**

representing examples from various Cape museums, including: an imbuia Bible desk, *8cm high*, an imbuia and yellowwood side table, *6cm high*, a stinkwood side table, *6cm high*, another, *6,5cm high*; and a miniature Regency style mahogany sofa table, *6cm high*, all with presentation boxes (5)

R2 000 – 3 000

469

**A group of twelve ivory Ekipas,  
Namibia**

each incised with geometric borders, double-hole aperture, *approximately 7cm wide* (12)

R2 000 – 3 000

470

**A Colonial bone and brass-  
mounted ceremonial dagger**

in a balsa wood and leather scabbard, with steel blade, *length of blade 19cm long*; and a metal-mounted pocket knife, with shaped blade, *the blade 6cm long* (2)

R400 – 600

471

**Ten Dutch Delft blue and white  
tiles, 18th and 19th century**

painted with figures and landscapes within circular borders, with *ossekopjes* corners, *13cm square*; and two further examples (12)

R2 000 – 3 000

472

**Thirteen Dutch Delft blue and  
white tiles, 18th and  
19th century**

each painted with tulips, with trelliswork corners, *13,5cm square* (13)

R2 000 – 3 000

473

**An Indian teak and brass-  
mounted box**

rectangular with pierced mounts, the sides with carrying-handles, enclosing a velvet-lined interior with two hinged compartments, *17cm high, 41cm wide, 26cm deep*

R3 000 – 4 000



469



471



472

474

**A George III style mahogany three-tiered dumb waiter**

the circular tiers joined by baluster supports, on tripod legs with pad feet and castors, 132cm high

R4 000 – 6 000

475

**A cut-glass ship's decanter and stopper**

the body cut with diamond-shaped printies, 26cm high; a cut-glass decanter with electroplate mounts and stopper, 26cm high; and two engraved glass flasks, in sizes, the taller 20cm high (4)

R2 000 – 3 000

476

**Two cut-glass decanters and stoppers**

one with faceted body and cut with three neck-rings, 25,5cm high, and a plain example, 27cm high; and two carafes, one cut with stars, 22cm high, and the other with a band of diagonal cuts, 16cm high (4)

R1 200 – 1 500

477

**An Indian rosewood hanging cupboard**

the arched pediment surmounted by three urn-shaped finials, the front and sides with glazed doors enclosing a shelf, 70cm high, 49cm wide, 32cm deep

R2 000 – 3 000



474



478



479

478

**A large brass alms dish, 18th century**

the centre moulded with two spies from the Land of Canaan enclosed by a double border of lozenge and boss motifs, stamped decoration, 57cm diameter

R5 000 – 7 000

479

**A Nuremberg brass alms bowl, 17th/18th century**

the centre moulded with a large flowerhead enclosed by an inscription, the rim with foliate punched border, 49cm diameter

R5 000 – 7 000

480

**A carved wooden mirror**

with rectangular plate, the frame carved with shell and acanthus-leaf borders, with gilt and white highlights, *150cm high, 120cm wide*

R8 000 – 10 000

481

**A brass fire fender seat, late 19th/early 20th century**

with red dralon-upholstered seat above a pierced gallery, raised on a conforming hammered base, *55cm high, 44cm wide, 61cm deep*

R4 000 – 6 000

482

**A Hylton Nel stoneware figure of a bull, signed**

after the Antique, modelled with a figure astride his back, *15cm high*

R3 000 – 4 000

483

**A Hylton Nel earthenware figure of a crouching man, signed and dated 13.07.05**

with grimacing expression, the whole glazed in pale lime green, with a penis on his back, *31cm long*

R6 000 – 8 000

484

**A Hylton Nel earthenware figure of a woman, signed and dated 14.07.05**

similar to the preceding lot, seated on a triangular base, glazed with blue hair, *28cm high*

R6 000 – 8 000

483



484



485

**A Hylton Nel earthenware figure of a Shepherdess, signed**

standing on a rectangular plinth, each arm encircling a lamb, before a stylized tree, *one foot repaired, one leaf lacking, 23cm high*

R8 000 – 12 000

485



486

**A Hylton Nel figure of a Fortune Teller, signed**

earthenware and composition, painted and enamelled in orange, yellow and blue, the standing figure wearing a turban and holding a crystal ball, *34,5cm high*; and two earthenware and lustre decorated figures, each standing, one pierced and wearing a cloak with a serpent around his neck, the other with a mask, *both signed, the taller 35,5cm high (3)*

R4 000 – 6 000

487

**A Hylton Nel white and brown-glazed tulip vase, signed**

the oval-shaped body moulded with a scallop shell, the sides with bird-shaped handles, the top with eight apertures, the circular base with white dash border, 19cm high; and a bowl signed and dated 2-11-93, with moulded rim, the exterior painted with alternating stylized red flowers and berries, yellow-glazed footrim, 14,5cm high (2)

R4 000 – 6 000

488

**Two earthenware cheese dishes and covers**

each in the form of a cat, *some damage*, 28cm wide; and a green earthenware soup tureen, cover and stand, *stand repaired*, 30cm high (3)

R200 – 300

489

**An earthenware carousel, Ian Stallard, 1997**

hexagonal, with three apertures, painted with colourful scenes, the detachable cover moulded in relief with various humorous objects, the interior fitted with a clock, *firing cracks, minor chipping*, 33cm high

R500 – 700

490

**A mahogany sideboard, possibly Scottish, first quarter of 19th century**

the bowfronted top with three-quarter brass gallery, above a drawer with a napery drawer below, flanked by a cellaret drawer and a cupboard, on fluted legs, 110cm high, 144cm wide, 57,5cm deep

R8 000 – 10 000



490



491

491

**A Chinoiserie black and gilt lacquered chest, late 18th/early 19th century**

with hinged rectangular top, the whole painted with Chinoiserie scenes, *later iron handles*, on bun feet, *lacking back feet*, 62cm high, 63cm wide, 67cm deep

R15 000 – 20 000

Julian Adler Antiques, Loop Street, Cape Town, 12 February 2000

492

**A Hylton Nel earthenware bowl, signed and dated 14.12.94**

the centre transfer-printed with a spray of flowers, the rim with diaper and dot border, 17,5cm diameter; and a mug, signed with the initials and dated 22.12.94, with sponged manganese decoration (2)

R1 500 – 2 000

493

**A Hylton Nel earthenware figure of a cat, signed with the artist's initials and numbered 3/25**

seated, with green eyes, the body decorated with rows of wavy lines in brown with yellow highlights, 42cm high

R8 000 – 12 000

494

**A Hylton Nel yellow and blue glazed bowl, signed and dated 8.10.2001**

the centre painted with the figure of a young man and inscribed 'BENNIE' within a stylized star border, the shaped rim with strawberry prunts, 28,5cm diameter

R4 000 – 6 000

495

**A Hylton Nel colander, signed and dated 25.11.02**

the pierced bowl sponged with green marks between brown stylized stars, with pie-crust border, the reverse with stylized leaves and cross-hatched border in iron-red, raised on three feet, 30,5cm diameter

R4 000 – 6 000

496

**A Hylton Nel earthenware blue-glazed bowl, signed and dated 16-9-4**

painted with the figure of a man, with scalloped rim and footrim, 24cm diameter

R4 000 – 6 000



493



494

497

**A Hylton Nel stoneware bowl, signed**

the rim with brown-glazed hatched border interspersed with four green-glazed diamond-shaped motifs, the reverse loosely decorated with three large flowerheads, on a pedestal foot, 21cm diameter; and an earthenware bowl, impressed with the artist's initials, with pierced wavy yellow-glazed rim, the centre painted with a stylized pomegranate, 23cm diameter (2)

R4 000 – 6 000



496 detail

498

**A Hylton Nel dish, signed and dated 20-2-93**

decorated with alternating panels of green and brown glaze against an ochre ground, the reverse similarly decorated with alternating panels of oak leaves, *25cm diameter*; and a scraffiato plate, the centre incised with a stylized bird within an eight-point star, *signed with initials, 20,5cm diameter (2)*

R5 000 – 7 000

499

**A set of four Hylton Nel spinach and mustard glazed bowls, signed and dated 17.8.93**

of irregular outline with brown rim, *26cm diameter (4)*

R6 000 – 8 000

500

**A Hylton Nel bowl, signed and dated 16.11.99**

inscribed 'The Wind blows out: the Bubble dies: The Spring entomb'd in Autumn lies; The Dew dries up, the Starre is shot; The Flight is past; and Man forgot', the rim with a yellow band, the exterior with three heart-shaped motives enclosed by a blue sponged ground, pierced footrim, *12cm high*

R4 000 – 6 000

501

**A Hylton Nel stoneware vase, signed ovoid, painted in iron-red with stylized birds before a landscape, *15cm high***

R2 000 – 3 000

502

**An oak and inlaid dresser, late 18th/early 19th century**

with open back, three shelves above four small drawers flanked by a pair of doors inlaid with figural paterae, with open shelves above, the lower section with three frieze drawers, on square-section tapering legs, *197cm high, 180cm wide, 52cm deep*

R12 000 – 15 000

503

**A Cape teak and yellowwood side table, 19th century**

the rectangular top above a plain frieze, with notched tapering square-section legs, *69cm high, 92cm wide, 74cm deep*

R5 000 – 6 000

504

**Two Cape stinkwood Overberg side chairs, 19th century**

each with plain top rail above three splats, one with riempie and one with caned seat, on square-section tapering legs, one with an H-shaped stretcher (2)

R4 000 – 6 000



502

505

**A Cape stinkwood and fruitwood low chair, 19th century**

with arched top rail, the midrail incised VI, riempie seat, on square-section tapering legs joined by a three-quarter box-stretcher; and a Cape stinkwood and fruitwood side chair, 19th century, with lightly curved top- and midrails incised with line decoration, riempie seat, on square-section tapering legs joined by a box-stretcher, *both with restorations* (2)

R3 000 – 4 000

506

**A pair of Cape stinkwood Regency side chairs, 19th century**

each with plain top- and midrails, caned seat, on square-section tapering legs joined by an H-stretcher (2)

R5 000 – 6 000

507

**An Overberg teak and oak side chair, 19th century**

with shaped top rail above a pair of midrails, riempie seat, on ring-turned baluster legs joined by stretchers; a West Coast fruitwood side chair, late 19th century, with curved top rail and conforming midrails, riempie seat, square-section tapering legs joined by an H-stretcher, *restorations and replacements*; and a Cape stinkwood side chair, 19th century, with shaped top rail, bow-tie shaped midrail, riempie seat, on square-section tapering legs joined by an H-stretcher (3)

R4 000 – 6 000

508

**A Cape pine wash-stand, late 19th century**

the rectangular top with moulded edge and three-quarter gallery, square-section tapering legs united by a platform, *86cm high, 87cm wide, 45cm deep*

R2 000 – 3 000

509

**A pine table**

on ring-turned baluster legs, *76,5cm high, 90cm wide, 41cm deep*

R500 – 700

510

**A Chinese blue and white Nankin pattern part dinner, tea and coffee service, modern**

comprising: 22 hors d'oeuvres plates, 23 dinner plates, 21 bread plates, 24 dessert plates, 2 oval dishes, 4 oval platters, in sizes, 2 circular vegetable tureens and covers, 22 dessert bowls, a pair of sauce boats and stands, 2 covered sugar bowls, 2 milk jugs, 2 teapots, 11 coffee cups, 11 tea cups and 24 saucers, *some damage and chips, the largest oval platter 45cm long* (Qty)

R6 000 – 8 000

511

**An Indonesian teak dining table**

the rectangular top above a plain frieze on tapering legs, *77,5cm high, 200cm long, 94cm wide*

R4 000 – 6 000



504



505



506



512

**Two Cape stinkwood Regency armchairs, 19th century**

each with shaped curved top rail, conforming midrail, downcurved arms, caned seat, on ring-turned baluster legs, *restorations* (2)

R8 000 – 10 000



512

513

**A pair of Cape stinkwood side chairs, 19th century**

each with plain top- and midrail, caned seat, on square-section tapering legs joined by an H-stretcher; another, with shaped top rail, *later* midrail, riempie seat, on square-section tapering legs, *repairs and restorations*; and another, with arched top rail, *replaced* riempie seat, square-section tapering legs joined by three-quarter stretchers (4)

R6 000 – 8 000



514

514

**Two Overberg stinkwood side chairs, 19th century**

each with curved top rail and conforming midrails, one with caned the other with riempie seat, on square-section tapering legs joined by an H-stretcher (2)

R5 000 – 7 000

515

**A Cape teak and fruitwood Transitional Tulbagh chair, 19th century**

the pierced shaped top rail above a pair of splats, riempie seat, on square-section chamfered legs joined by box-stretchers, *restorations*

R3 000 – 4 000

516

**South African School**

20TH CENTURY

*Cape Houses*, two

signed BP Rheeder and dated 94

oil on board

54,5 by 83cm; 40 by 60cm

R1 000 – 1 500

another, inscribed 'Steenberg, HL, '50', 33 by 46cm; *Harvesting*, signed R Hauri, 44,5 by 64,5cm; *The Garden*, indistinctly signed and dated 95; and a shell collage of a *Cape House*, by Beryl Bock (6)



519

517

**An oak gateleg drop-side table,  
20th century**

the rectangular top with rounded corners on square-section stile supports joined by stretchers, 77cm high, 152cm long, 90cm wide open

R2 000 – 3 000

518

**A Fritz Kuhla walnut upright piano**

113cm high, and a piano stool with hinged seat (2)

R3 000 – 4 000

519

**A George II style upholstered and mahogany wingback armchair**

on shell-carved cabriole legs joined by stretchers

R4 000 – 6 000

520

**An oak upholstered low stool,  
20th century**

rectangular, on square-section legs joined by stretchers, 25cm high, 95cm wide

R400 – 600

521

**A beech, elm and fruitwood spinning wheel, late 19th/early 20th century**

105cm high

R500 – 700

522

**An African carved games table,  
20th century**

the circular top carved with animals, the reverse with a backgammon board, on a folding tripod base, 51cm high, 44,5cm diameter

R300 – 400



523

**A pine dresser**

with rectangular outset top above a pair of glazed doors enclosing two shelves, with a pair of cupboard doors below enclosing a shelf, on a plinth base, *168cm high, 97cm wide, 48cm deep*

R3 000 – 4 000

524

**A pair of brass hanging salt boxes**

each with shaped backplate and moulded front, *21cm high* (2)

R400 – 600

525

**A Staffordshire part fruit set, late 19th century**

each piece painted with titled landscapes enclosed by a maroon border with gilt wrigglework, wavy gilt rims, comprising: 9 plates and 4 comports, in sizes, *some damage, the plates 22cm diameter* (13)

R1 200 – 1 500

526

**A pair of Portmeirion 'The Botanic Garden' pattern tureens and covers, modern**

*20cm high*, and a part-set of Royal Porcelain cream and white wares, including fifteen bowls and twenty-one plates (Qty)

R2 000 – 3 000

527

**A miscellaneous group of Chinese blue and white wares, Qing Dynasty, 18th/19th century**

including: two bowls, in sizes, *the larger 9cm high*, a set of five plates, the centre painted with a peony within a sgraffito border, a pair of plates, the centre painted with a medallion of a figure before a balustrade, and two others, an armorial dish, and two strainers, *all with damage* (14)

R900 – 1 200

528

**A miscellaneous group of Chinese, Japanese and Korean ceramics**

including: a celadon bowl, modern; eight Japanese white-glazed fan-shaped plates and two oval-shaped dishes; four Japanese ashtrays painted with sprays of blossom; three stoneware tea bowls; two white examples; twelve Chinese blue and white leaf-shaped dishes; a Korean celadon-glazed teapot; four tea bowls and a celadon rectangular dish (Qty)

R1 500 – 2 000

529

**A Carrol Boyes pewter sauce boat, modern**

a Carrol Boyes pewter bowl, *33cm diameter*, and a Carrol Boyes pewter serviette holder (3)

R400 – 600

530

**A stinkwood and fruitwood two-tier egg-rack**

the circular tiers united by a *later* column, on three onion-shaped feet, *24cm high*

R1 500 – 2 000

531

**A set of pine hanging corner shelves, 20th century**

with moulded arched front above three open shelves, *85cm high, 45cm wide*; and a pine three-tier corner shelf, *58cm high* (2)

R400 – 600

532

**Eight bronze figures of animals**

including: a giraffe, deer, bull, mouse, rabbit, lion, owl and toad, *the giraffe 17cm high* (8)

R400 – 600

533

**A pair of pine butter presses**

a wooden rectangular dish, *107cm long*; and two wooden paddles (5)

R400 – 600

534

**A miscellaneous group of kitchenwares**

some randomly decorated with white dots on a red ground, comprising: 2 sandwich plates, 5 pudding bowls, a fruit bowl, a side plate, milk jug and condiment set, *Stylecraft Midwinter Staffordshire*; another condiment set; a sauceboat, two jugs, a pair of eggcups, a pair of mugs, a biscuit barrel, a cake plate in the form of an umbrella; three enamel bowls, in sizes; and three glass 'handkerchief' shaped bowls (Qty)

R800 – 1 000

535

**A painted metal dentist's cabinet, 20th century**

with glazed doors above four hinged instrument compartments, with marble top, the lower section with six further hinged compartments above a cupboard enclosing a glass shelf, on bracket feet, *177cm high, 82cm wide, 45cm deep*

R2 000 – 3 000

536

**A fruitwood bread paddle**

*182cm long*

R200 – 300

537

**A stoneware jelly mould**

*chipped, 9cm high*; a white example; a pestle and mortar; and a French stoneware mixing bowl (5)

R300 – 400

538

**A pink and clear glass electroplate-mounted claret jug**

cast with putti, mask-shaped spout, harp-shaped handle with dragon-shaped thumbpiece, *30cm high*; a pink glass and metal-mounted sugar caster, tapering faceted, *12cm high*; and a pink and clear glass vase, French, modern, *17cm high* (3)

R1 000 – 1 500

539

**A red and white painted enamel wall-mounted coffee grinder**

*33cm high*; a mincer; and a Blow glass churn with wooden paddles, *38cm high* (3)

R150 – 200

540

**A Thermos ice bucket, circa 1960**

cream with red handles, *19cm high*; and a miscellaneous group of red and white wares including a Heat-Rite teapot, *15cm high*, twelve red enamel coffee cans and a red Carltonware milk jug, *10cm high* (Qty)

R600 – 800

541

**A miscellaneous group of kitchenwares**

predominantly red and white, including toast-racks, condiment sets, cups, saucers, bowls, jugs, figures and three enamel canisters (Qty)

R400 – 600

542

**A Delft stoneware pitcher, 20th century**

the ovoid body with mottled red and grey glaze, the side with handle, *black-printed factory mark, 19cm high*; four blue and white Onion Pattern salts and a pair of napkin holders, en suite, *Zwiebelmuster, Czechoslovakia* (7)

R800 – 1 000

543

**A George III mahogany commode, late 18th century**

the square hinged top enclosing three open wells above a faux drawer, a pair of cupboard drawers below with two drawers, on square-section legs, the sides with brass carrying-handles, *distressed, 86,5cm high, 51cm square*

R1 500 – 2 000

544

**A Spanish teak table**

the rectangular moulded two-plank top above a panelled frieze with three drawers, on ring-turned feet, *52cm high, 190cm long, 99cm wide*

R4 000 – 6 000

545

**A child's teak high chair**

with drop-in seat

R200 – 300

546

**A set of ten caned dining chairs and four armchairs, modern**

(14)

R4 000 – 6 000

547

**A caned suite, modern**  
comprising, three settees and six  
armchairs, *the settee 145cm wide (9)*  
R4 000 – 6 000

548

**A pair of Chinese covered rice  
storage containers**  
of baluster outline with metal bands,  
*38cm high (2)*  
R600 – 800

549

**A Korean pine two-fold screen**  
each fold pierced with trellis panels  
above a solid rectangular panel,  
*182cm high, 95cm wide open*  
R800 – 1 000

550

**A pine cupboard, late 19th  
century**  
with arched backboard and side  
gallery, rectangular top above a pair  
of doors with arched panels inset with  
netting, enclosing two *later* shelves,  
the sides with carrying-handles, on  
bracket feet, *100cm high, 107cm wide,  
61cm deep (Qty)*  
R3 000 – 5 000

551

**A pair of fruitwood card  
tables, modern**  
the square top inset with a baize-lined  
playing-surface, on square-section  
legs joined by pierced cross-stretchers,  
*76cm high, 75cm square (2)*  
R1 200 – 1 500

552

**A miscellaneous group of  
games, modern**  
including Scrabble, Solitaire, Chess,  
puzzles, playing cards and Roulette,  
some cased (Qty)  
R600 – 800

553

**A Russian red velvet 'Lenin'  
commemorative wall hanging,  
20th century**  
the centre stitched in silk with a  
portrait of Lenin above a chain-  
stitched inscription, the reverse with  
inscription, *27 by 170cm*  
R4 000 – 6 000

The front of the wall hanging  
translates:  
(Proletarian)  
People of the world, unite!  
Under the banner of Marxism-  
Leninism,  
Under the leadership of the  
communist party,  
Forward to the victory of communism!  
The reverse of the wall hanging  
translates:  
Communar (name of the car building  
factory)  
TO THE WINNER  
Of the socialist challenge  
For a better preparation  
Of the citizen defence

554

**A miscellaneous quantity of cushions**  
(Qty)  
R400 – 600  
555  
**A miscellaneous quantity of cushions**  
(Qty)  
R400 – 600

556

**A Khorossan carpet, East Persia,  
circa 1950**  
*condition: overall wear, 382 by 315cm*  
R6 000 – 9 000

557

**A South West Persian rug, circa 1950**  
*condition: fair, 186 by 118cm*  
R2 000 – 3 000

558

**A Meshed carpet, East Persia, circa  
1940**  
*condition: overall wear, 450 by 397cm*  
R6 000 – 9 000



553

559

**A Kurdi Khellim, West Persia, 1950s**

*condition: fair, 317 by 116cm*

R1 500 – 2 000

560

**A Caucasian rug, circa 1950**

*condition: areas of wear, 210 by 140cm*

R1 000 – 1 500

561

**A Karabagh rug, South Caucasia, 1900**

*condition: worn, 196 by 120cm*

R1 000 – 1 500

562

**A Tabriz carpet, North West Persia, 1950**

*condition: moth damage, sides and ends reduced,  
300 by 200cm*

R800 – 1 200

563

**A South West Persian carpet, circa 1950**

*condition: fair, 240 by 230cm*

R2 000 – 3 000

564

**A Caucasian rug, circa 1930**

*condition: some moth damage, sides and ends reduced,  
220 by 110cm*

R1 500 – 2 000

565

**A Tabriz carpet, North West Persia, circa 1930**

*condition: overall wear, faded, 400 by 294cm*

R4 000 – 6 000

566

**A Shiraz rug, South West Persia, circa 1940**

*condition: overall wear, 150 by 121cm*

R600 – 900



## BOOKS



567

Below, I.

*Hidden Treasures, Irma Stern, Her Books, Painted Book Covers and Bookplates, The Society of Bibliophiles, Cape Town: 2000, dustjacket, slightly bumped;* and *Meisterwerke Antiker-Plastik, Berlin: Globus Verlag G.M.B.H., illustrations, 4to, pictorial cloth, gilt-decorated end pages and inside covers, bearing a lithographed Ex Libris Irma Stern Label to the inside front cover, depicting a still-life by Irma Stern (cf. Irene Below, *Hidden Treasures, Irma Stern, Her Books, Painted Book Covers and Bookplates*, page 54, plate 21, spine faded, cover stained, spine cracked (2)*

R1 800 – 2 000

568

Arnold, M.

*Irma Stern: A Feast for the Eye*

*Vlaeberg: Fernwood Press, 1995, illustrations, 4to, cloth, dustjacket;* and *Irma Stern - Expressions of a Journey, Johannesburg: Standard Bank Studio, 2003, and Dubow, N. (ed) - Paradise - The Journal and Letters (1917-1933) of Irma Stern Cape Town: Chameleon Press, 1991, 4to, cloth, dustjacket (3)*

R1 500 – 1 800

569

Atmore, M.G.

*Cape Furniture*

*Cape Town: Howard Timmins, 1965, illustrations, 4to, hardcover, dustjacket, edges slightly bumped, endpapers stained, dustjacket cut;* Fransen, H., *The Cape Chair, Die Kaapse Stoel - Stellenbosch Museum, 1970, illustrations, 8vo, cloth, dustjacket, No. 242 of 1 000 copies, the illustrated edition of the catalogue of an exhibition held in the Stellenbosch Museum in April 1969 (2)*

R1 200 – 1 500

570

Baraitser, M. and Obholzer, A.

*Town Furniture of the Cape*

*Cape Town: Struik, 1987, illustrations, 4to, cloth, spine and cover rubbed;* Baraitser, M., & Obholzer, A., *Cape Antique Furniture, Cape Town: Struik, 2004, 4to, dustjacket (2)*

R1 000 – 1 500

571

Bird, A.

*More Cape Flowers by a Lady*

*Johannesburg: the South African Natural History Publication Company, 1964, illustrations, 4to, cloth, leather spine, dustjacket, corners bumped;* and 14 others of related interest (15)

R4 000 – 6 000

572

Boggie, J.M.

*First Steps in Civilizing Rhodesia*

*Bulawayo: Kingstons Limited, 1947, 4to, hardcover, illustrations, corners bumped;* and 3 others of related interest (4)

R500 – 700

573

Bradlow, F. and Bradlow E.

*Thomas Bowler of the Cape of Good Hope*

*Cape Town: A.A. Balkema, 1955, illustrations, 8vo, cloth, corners rubbed, cover faded;* and Bradlow, F.R., *Africana Books & Pictures - A selection of published papers, Cape Town: A.A. Balkema, 1975, 8vo, cloth, dustjacket, spine bumped (2)*

R1 200 – 1 500

574

Brenthurst Press

*Brenthurst Archives*

Volume I (1 & 2) 1994, Volume II (1 & 2) 1995; illustrations, 4to, pictorial paperboards (4)

R700 – 900

575

**Brooke Simons, P.**

*Groote Schuur*

Cape Town: Fernwood Press, 1996, illustrations, 4to, cloth, dustjacket, Stellenbosch Museum, 1970, illustrations, 8vo, cloth, dustjacket, signed by the author, some stains to cloth, spine ends bumped; and 12 others of related interest (13)

R1 500 – 2 000

576

**Clute, J**

*Science Fiction, The Illustrated Encyclopedia*

London: Dorling Kindersley, 1995, illustrations, 4to, cloth, dustjacket, dustjacket torn; and two others (3)

R150 – 180

577

**De Kock, V.**

*By Strength of Heart*

Cape Town: Howard Timmins, 1953, illustrations, 4to, cloth, dustjacket, limited edition: No. 1 400 of 1 500 copies, corners bumped, dustjacket bent and torn; and 16 others of related interest (17)

R1 200 – 1 500

578

**Dolan, B.**

*Josiah Wedgwood, Entrepreneur to the Enlightenment*

London: Harper Collins, 2004, illustrated, 8vo, cloth, dustjacket; and 35 others of related interest (36)

R2 500 – 3 500

579

**Emslie, T.S. and Murray P.L. (eds)**  
*Leipoldt's Food & Wine*

Cape Town: Stonewall Books, 2004; and 42 others of related interest (43)

R1 500 – 1 800

580

**Fairbank, J. K.**

*The Great Chinese Revolution: 1800 - 1985*

New York: Harper & Row, 1986, 8vo, cloth, dustjacket, hardcover, binding a little shaken, endpapers stained, dustjacket bent; and 6 others of related interest (7)

R600 – 800

581

**Fransen, H.**

*Drie Eeue - Kuns in Suid-Afrika - Beeldende Kuns, Boukuns, Toegepaste Kuns*

Pietermaritzburg: Anreith Uitgewers, 1981, illustrations, 4to, softcover, corners bumped; and 2 others of related interest (3)

R400 – 600

582

**Fransen, H.**

*A Cape Camera - The Architectural Beauty of the Old Cape*

Johannesburg: Ad. Donker Publisher and Jonathan Ball Publishers, 1993, illustrations, 4to, cloth, dustjacket, corners and spine rubbed, edges frayed; and another of related interest (2)

R2 000 – 3 000

583

**Fransen, H.**

*The Old Buildings of the Cape*

Johannesburg and Cape Town: Jonathan Ball Publishers, edition constitutes revision of *The Old Houses of the Cape* (1965) and *The Old Buildings of the Cape* (1980) retaining historical notes by Mary Alexander Cook, illustrations, 4to, cloth, dustjacket rubbed; and Fransen, H., *The Old Houses of the Cape, Cape Town and Amsterdam: A.A. Balkema, 1965*, illustrations, 4to, dustjacket, foxing and staining, edges rubbed (2)

R2 000 – 3 000

584

**Franzoi, U. and Smith, M.**

*Grand Canal*

Verona: Arsenale Editrice, 1993, illustrated, 4to, cloth, dustjacket, slipcase; and 20 others of related interest (21)

R2 200 – 2 500

585

**Hamlyn, P.**

*Carpets of the Orient*

London: Hamlyn, 1970, illustrations, 4to, cloth, dustjacket, spine bumped and faded, dustjacket torn and covered in plastic; and 3 others of related interest (4)

R300 – 500

586

**Heller, D.**

*In Search of VOC Glass*

Cape Town: Maskew Miller Ltd., illustrations, 4to, cloth dustjacket, corners bumped, spine faded; and 8 others of related interest (9)

R600 – 800



587

**Hibbard, H.**

*The Metropolitan Museum of Art*

London: Faber & Faber, 1980, illustrations, large 8vo, cloth, dustjacket, *dustjacket torn and stained*; and 11 others of related interest (12)

R1 200 – 1 500

588

**Kubota, H.**

*China*

London: Collins, 1986, illustrated, 4to, cloth, dustjacket; and 8 others of related interest (9)

R800 – 1 200

589

**Kuttel, M.**

*Fair Winds at the Cape, the Story of Yachting at the Cape*

Cape Town: A.A. Balkema, 1954, illustrations, 8vo, cloth, dustjacket, *dustjacket torn*; and 3 others of related interest (4)

R700 – 900

590

**Langford, M.**

*The Step-by-Step Guide to Photography*

Great Britain: Ebury Press, 1978, illustrations, 4to, cloth, *corners bumped*; and 9 others (10)

R300 – 400

591

**Le Vaillant, F.**

*Traveller in South Africa, Volume II*

Cape Town: Library of Parliament, 1973, illustrations, 4to, cloth, *corners rubbed and bumped, cloth faded in places*; Raven-Hart, R., **Cape of Good Hope**, Cape Town: A.A. Balkema, 1971, Volumes I and II, illustrations, 4to, cloth, dustjacket (3)

R1 000 – 1 200

592

**Luckhoff, C.A.**

*Table Mountain - Our National Heritage After Three Hundred Years*

Cape Town: Balkema, 1952, 4to, illustrations, cloth, dustjacket, *spine and corners bumped, spine worn, endpapers stained, dustjacket stained*; and 7 others of related interest (8)

R1 200 – 1 500

593

**McCann, L.**

*Nostradamus, The Man Who Saw Through Time*

Canada: Creative Age Press, 1941, paperback; and 6 others of related interest (7)

R250 – 300

594

**McCarthy, T.**

*The Story of Earth and Life - A Southern African Perspective on a 4.6 billion-year journey*

Cape Town: Struik Nature, 2005, softcover; and 5 others of related interest (6)

R500 – 700

595

**McIntyre, I. H.**

*The Remarkable Life of Dr Johnson's 'Dear Mistress'*

and 11 others of biographical and autobiographical interest (12)

R400 – 600

596

**McLean, G.L.**

*Roberts' Birds of Southern Africa*

Cape Town: The Trustees of the John Vocker Bird Book Fund, 1993; and 2 others of related interest (3)

R150 – 200

597

**Murphy, D.**

*South from the Limpopo, Travels through South Africa*

London: John Murray, 1997; and another of related interest (2)

R80 – 100

598

**Nathan, M.**

*The Huguenots in South Africa*

Johannesburg: CNA, 1939, illustrations, 8vo, cloth, dustjacket; and 4 others of related interest (5)

R300 – 500

599

**Obholzer, A.M., Baraitser, M. and Malherbe, W.D.**

*The Cape House and its Interior*

Stellenbosch: Stellenbosch Museum, 1985, illustrations, 4to leatherette, dustjacket, Grosvenor House Edition Number One, Limited Edition, No. 1295 of 1600, *dustjacket slightly bent in places*; and 5 others of related interest (6)

R3 000 – 4 000

600

**Ollemans, S., Stevenson, M. and Viljoen, D.**

*The Cape House, Decorative Arts relating to the Cape of Good Hope*

Dorp Street Gallery, Stellenbosch: 1999; and 10 others of related interest including a quantity of Library and Museum Bulletins (Qty)

R250 – 300

601

O'Rear, C.

*Cabernet - A Photographic Journey from Vine to Wine*

New York: Smithmark, 1998, illustrations, 4to, cloth, dustjacket; and 11 others of related interest (12)

R700 – 900

602

Pearse, G.E.

*Eighteenth Century Furniture in South Africa*

Pretoria: J. L. van Schaik Ltd, 1960, illustrations, 4to, cloth, dustjacket, corners bumped, edges rubbed, cover faded, foxing, dustjacket torn and stained

R800 – 1200

603

Pearse, G.E.

*Eighteenth Century Architecture in South Africa*

Cape Town: A.A. Balkema, 1968, illustrations, 4to, cloth, edges rubbed, dustjacket torn and stained

R800 – 1200

604

Pearse, G.E.

*The Cape of Good Hope 1652 - 1833: An account of its buildings and the life of its people*

Pretoria: Van Schaik, 1956, illustrations, 4to, cloth, dustjacket, corners bumped, endpages stained; and 14 others of related interest (15)

R1 000 – 1500

605

Reynolds, M.

*Everything You Do is a Portrait of Yourself, Dorothy Kay, A Biography*

Cape Town: Alec Marjorie Reynolds, 1989, illustrations, 8vo, cloth, dustjacket, bumped; and 7 others of related interest (8)

R2 500 – 3 000

606

Smuts, F. (ed).

*Stellenbosch, Three Centuries*

Stellenbosch: Town Council of Stellenbosch, 1979, illustrations, hardcover, 4to, De Luxe edition, No. 98 of 100 copies, corners bumped; and 10 others of related interest (11)

R1 500 – 2 000

607

Thom, H.B. (ed)

*Journal of Jan van Riebeeck, 1651 - 1662, Volume II and III*

Cape Town, A.A. Balkema, for Jan van Riebeeck Society, 1952-1958, illustrations, 8vo, cloth, cover and spine faded and rubbed, endpages stained; and another of related interest (3)

R700 – 900

608

Trotter, A.F.

*Old Colonial Houses of the Cape of Good Hope*

London: B.T. Batsford, illustrations, 8vo, cloth, foxing and staining to end pages, hinges breaking, binding shaken, corners bumped, spine torn; and 8 others of related interest (9)

R1 200 – 1500

609

Van Riebeeck Society

*Second Series - 20 Volumes: Nos 19-20, 24-30, 32-42*

Cape Town: Van Riebeeck Society, 1970-1996, illustrations, 8vo, cloth, dustjackets (20)

R700 – 900

detail of interior painted floor



610

Venter, L.

*When Mandela Goes, The coming of South Africa's second revolution*

Johannesburg: Doubleday, Transworld Publishers, 2000; and 3 others of related interest (4)

R120 – 150

611

Viney, G.

*Colonial Houses of South Africa*

Cape Town: Struik-Winchester, 1987, with dustjacket in slipcase, illustrations, 4to, cloth, dustjacket slightly bumped; and another of similar interest (2)

R800 – 1 200

612

Walker, E.A.

*A History of Southern Africa*

London: Longman's Green & Co., 1957, maps, cloth, 8vo, spine faded, endpages stained; and 16 others of related interest (17)

R600 – 800

613

Wallis, J.P.R.

*Thomas Baines - His Life and Explorations in South Africa, Rhodesia and Australia 1820-1875*

Cape Town: A.A. Balkema, illustrations, large 8vo, cloth, dustjacket; and 3 others of related interest (4)

R800 – 1 000

614

Warren, W.

*The Tropical Garden*

London: Thames and Hudson Ltd., 1991, illustrations, 4to, dustjacket, corners and spine bumped, edges torn, dustjacket bent and torn; and 16 others of related interest (17)

R1 000 – 1 200

615

Welz, S.A.

*Cape Silver and Silversmiths*

Cape Town: A.A. Balkema, 1976, illustrations, 4to, leatherette, dustjacket, dustjacket torn; and another of related interest (2)

R1 200 – 1 500

616

Woodward, C.S.

*Oriental Ceramics at the Cape of Good Hope 1652 - 1795*

Cape Town: A.A. Balkema, 1974, illustrations, 4to, cloth, dustjacket, dustjacket torn; and 3 others of similar interest (4)

R1 200 – 1 500

617

Worden, N., van Heyningen, E. and Bickford-Smith, V.

*Cape Town - The Making of a City*

Cape Town: David Phillip Publishers, 1998, illustrations, 4to, dustjacket, corners slightly bumped; Newall, A., *Images of the Cape*, Cape Town: Tafelberg - Uitgewers, 1965, illustrations, oblong 4to, cloth; and 4 others of related interest (6)

R700 – 900

618

Wurmbrand, M. and Roth, C.

*The Jewish People, 4000 Years of Survival*

London: Thames and Hudson, 1966, illustrations, 4to, cloth, dustjacket, corners bumped, spine worn, dustjacket torn and frayed; and 2 others of related interest (3)

R40 – 60

619

Yann, A. B.

*The Earth from the Air*

United Kingdom: Thames and Hudson, 2002, illustrations, large 4to, cloth, dustjacket; and 6 miscellaneous books (7)

R400 – 500

620

Miscellaneous auction catalogues (32)

R500 – 700

621

Miscellaneous Books on Art and Antiques (22)

R900 – 1 200

622

Miscellaneous dictionaries (4)

R50 – 80

623

Miscellaneous books (17)

R1 500 – 1 800

624

Miscellaneous novels (Qty)

R200 – 300

625

Miscellaneous novels (Qty)

R200 – 300



A black and white photograph of a large, rough-hewn stone pillar in the foreground, with a house and garden in the background. The pillar is the central focus, showing its textured surface and vertical orientation. In the background, a house with a dark door and two windows is visible, partially obscured by trees and bushes. The overall scene is a garden or courtyard.

EXTERIOR & GARDEN

## EXTERIOR & GARDEN



626

626

**A Colonial Indo-Portuguese painted palanquin, early 19th century**

with studded leather roof, painted in green with yellow highlights, with fitted seat and curtains, on paw feet, 115cm high, 145cm long

R20 000 – 30 000

627

**Two Indonesian painted teak benches**

each with four-panelled lattice back centred by flowerheads, on ring-turned baluster legs, 188cm wide and 207cm wide respectively (2)

R2 000 – 3 000

628

**A green-painted wrought iron patio table and twelve chairs**

oval, 75cm high, 228cm long, 90cm wide (13)

R3 000 – 4 000

629

**A green-painted wrought iron circular table**

75cm high, 91cm diameter; and a pair of half-moon side tables, en suite, 75cm high, 90cm wide (3)

R1 000 – 1 500

630

**A pine and canvas garden swing-seat, 20th century**

with A-frame supports and canopy, repairs and damage, 204cm high, 198cm wide

R600 – 900

631

**Two rose quartz rocks, Namibia**

each with polished top, the taller 48cm high (2)

R4 000 – 6 000

632

**An Indonesian teak bench**

the four-panelled lattice back centred with flowerheads, with slatted seat, on tapering legs, *damaged*, 176cm long; and another, the back with three panels, with pineapple and bud carving, *damaged*, 154cm long (2)

R1 500 – 2 000

633

**A teak occasional table, modern**

square, with slatted top on ring-turned tapering legs, 51cm high, 64cm square

R500 – 700

634

**A white-painted steel and canvas garden swing-seat, 20th century**

with three-chair seat and canvas awning, *repairs and damage*, 150cm high, 210cm wide

R600 – 800

635

**An Indonesian teak bench**

with three-panelled lattice back centred by flowerheads, slatted seat, on ring-turned legs, 184cm long; and another, with four-panelled back centred by incised rondels, slatted seat, on square-section tapering legs, *distressed*, 184cm long (2)

R1 500 – 2 000

636

**A Victorian white marble pedestal**

square, carved with tasselled drapery, *the top with associated brass sundial*, 96cm high *excluding sundial* (2)

R1 500 – 2 000



639

637

**A white-painted cast-iron garden seat**

the pierced back and sides with scroll and heart-shaped motifs, on cabriole legs joined by an X-shaped stretcher, 94cm wide

R2 000 – 3 000

638

**An Indonesian teak bench**

the four-panelled lattice back with heart-shaped motifs centred by flowerheads, slatted seat, on baluster-turned legs, *repairs*, 197cm long; and another, similar, *distressed*, 187cm long (2)

R1 200 – 1 500

639

**An Indonesian teak settle, 19th century**

the four-panelled pierced back with wave-crested top rail above a row of spindles, two-plank seat, on square-section legs joined by stretchers, *distressed*, 304cm long

R8 000 – 12 000

640

**A set of four white-painted wrought iron patio chairs, modern**

each with arched scroll back, circular seat, on cabriole legs with pad feet joined by stretchers (4)

R400 – 600

641

**A pine and iron-mounted grain chest, 18th century**

the rectangular top carved with the initials 'DW', the straight sides with iron carrying-handles, on bracket supports, *one handle lacking, replaced ironwork, 78cm high, 168cm wide, 67cm deep*

R10 000 – 15 000

642

**Two Indonesian teak benches**

each with four-panelled lattice back, one centred by flowerheads, the other with roundels, with slatted seats, on ring-turned baluster legs, *distressed, 194cm and 186cm long respectively (2)*

R1 000 – 1 200

643

**An elmwood Windsor armchair, 18th century**

with arched back, shaped plank seat, on tapering legs, *bracing, repairs, damage*

R2 000 – 3 000

644

**An American green-painted stick comb-back Windsor armchair, late 18th/early 19th century**

with curved backrail, shaped plank seat, on tapering legs joined by an H-stretcher, *distressed*

R6 000 – 8 000







648

645

**A Colonial Indian teak and brass-mounted chest, 19th century**

with rectangular top, the front fitted with four brass bosses and a pierced escutcheon plate, the sides with brass carrying- handles, on bracket supports with ball front feet, *distressed*, 78cm high, 120cm wide, 60cm deep

R4 000 – 6 000

646

**Two Indonesian teak benches** each with four-panelled back, slatted seat, on ring-turned tapering legs, *distressed*, 205cm and 196cm long (2)

R1 000 – 1 200

647

**An Indonesian teak and brass-mounted bench**

with three-panelled pierced back headed by applied acanthus leaves, the arms with brass strapwork and beading, slatted seat, on ring-turned legs, 154cm wide; and a fruitwood carved example, the backrail carved with scroll and foliate decoration, three lattice panels, slatted seat, on tapering legs, 138cm wide (2)

R2 000 – 3 000

648

**A Persian painted canopy bed, 18th/19th century**

with panelled canopy, the sides with tapering octagonal columns headed by spandrels, each corner with hinged flap, on carved wood and iron supports, one side with a row of spindles, the whole painted with small red and white flowers, with string webbing mattress base, 170cm high, 242cm wide, 260 long

R15 000 – 20 000

649

**A Colonial Indian teak and brass-mounted chest, 19th century**

with rectangular top, the whole applied with brass studs and strapwork, the straight sides with carrying-handles, the interior with compartment, the front with three drawers, on bracket feet, *83cm high, 146cm long, 76cm deep*

R9 000 – 12 000



649

650

**A Colonial teak and brass-mounted chest, 19th century**

with rectangular hinged top, the sides with carrying-handles, the key escutcheon engraved with two birds, the whole applied with pierced strapwork and bosses, on detachable ring-turned bun feet, *74cm high, 124cm wide, 55cm deep*

R8 000 – 10 000



650

651

**An Indonesian teak centre table**

circular, raised on a ring-turned column with three arched and scroll legs, *75cm high, 115cm diameter*

R3 000 – 4 000

652

**A group of ten Indian carved teak ceiling roses**

in sizes, variously carved with flowerheads and foliage, one with fish, *the largest 40cm diameter* (10)

R1 500 – 2 000

653

**A pair of Indian teak fanlights**

semi-circular, now fitted with mirrors, *112cm wide, 56cm high* (2)

R1 000 – 1 500

654

**Four Indian patinated brass shallow vessels**

in sizes, circular with scroll handles, *the largest 73cm wide over handles* (4)

R1 200 – 1 600

655

**A pair of garden benches**

*120cm long* (2)

R400 – 600

656

**A green-painted wrought iron garden seat**

with foliate and scroll sides, slatted seat, *151cm long*

R2 000 – 3 000



658

657

**An Indonesian painted teak garden bench**

the four-panelled lattice back centred by flowerheads, slatted seat, on ring-turned legs, *180cm long*; and another, with three-panelled back, *distressed, 198cm long* (2)

R400 – 600

658

**A wire four-poster bed frame, by John van der Veen, modern**

the metal structure with wire canopy and curtains suspended with beaded chains, the whole worked with figures, animals and reptiles, *230cm high, 250cm wide, 260cm long*

R10 000 – 15 000

Prime Art, Cape Town 1993

659

**A painted five-fold screen**

the front and reverse painted with a landscape, with gilded edge, 182cm high, 205cm wide open

R600 – 800

660

**Two painted five-fold screens**

the front and reverse of each painted with scenes after the style of Monet, 177cm high, 200cm wide open (2)

R1 200 – 1 500

661

**Two Korean carved stone figures of Confucian Scholars, late Chosŏn dynasty period (1392–1910)**

each robed figure wearing a hat and clasping a scholar's attribute, the taller 179cm high (2)

R60 000 – 80 000

These two figures were originally set at the entrance of a temple of learning, South of Seoul, Korea. The temple was destroyed as part of the construction of the Seoul to Pusan superhighway prior to the Seoul Olympic Games of 1988.



661



662

**A Japanese carved stone lantern**

octagonal, in the form of a pagoda, the scalloped roof with pineapple finial, the sides with four apertures, on a stepped conforming lotus-shaped base, 300cm high

**R8 000 – 12 000**

This lantern is a copy of the example that stands in the 400-year old garden in the grounds of The Hotel New Otani in Tokyo.

End of Sale



662