

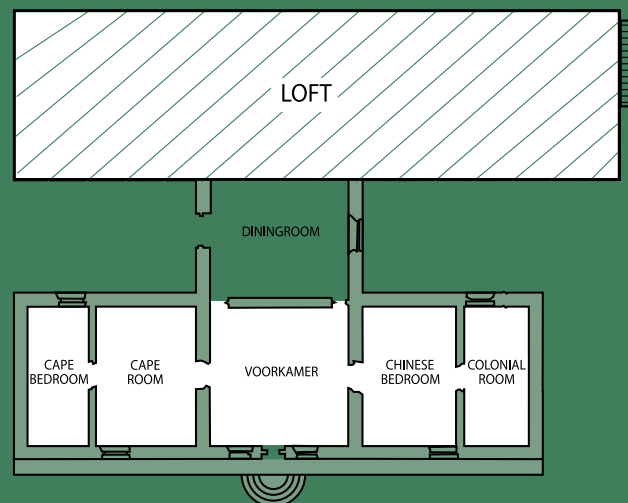




Keerweder, Franschhoek  
Monday 22 October - 2.30pm

## Session 2

Lots 226-436  
Cars





CARS



## CARS

226

### 1930 Model A Ford Phaeton

Vin No TPA840425124644

Engine No 15773

Veh Reg No LZF812A

Licence No CJ 1930 WP

**R160 000 – 200 000**

The Model A Ford replaced the venerable Model T late in 1927 (it was designated a 1928 model) and was produced until March 1932. At that stage more than 4.8 million units had been built in nine different body styles. The Model A featured a 201 cub inch (3.3 litre) four cylinder engine producing some 40 horsepower (about 30KW) with a three speed (and reverse) gearbox driving the rear wheels and had four wheel mechanical drum brakes. Today, the Model A is a highly regarded and sought after vehicle in vintage car circles and has a very good reputation for longevity and reliability. This particular 1930 four-door Phaeton has been in the present ownership for +/- 10 years, previously restored to a very high standard, with excellent detailing, evidently little used since and is still of pristine appearance. The light blue body has darker blue highlights and black wings/fenders, and is mounted on white bolt-on spoked wheels with chromed hubcaps. The spare wheel is mounted at the rear. The dark blue vinyl upholstery and white convertible roof are virtually unblemished. This vehicle would be eligible for a concessionary licence.



details



227

**1968 Mercedes Benz 250 SE  
Manual**

Vin No 10801460054513

Engine No 12998020030543

Veh Reg No SYH681C

Licence No CAZ1EC WP

**R60 000 – 90 000**

Premiered at the Frankfurt Motor Show in 1965, Mercedes Benz' new model W108 saloon offered fresh standards of refinement and luxury. During a seven year production run with a total of over 380 000 units assembled, the series was remarkably successful and gained an enviable reputation for reliability and durability. In 250 SE format, with 2.5 litre, six cylinder fuel injected engine, 55 181 units were produced between 1965 and 1968. This 1968 four-door saloon is offered in an original condition that seems to belie its age (44 years) - the cream body work and light brown leather interior are virtually unmarked. The polished woodwork and period radio add to the ambience of high class luxury. The recorded mileage is 11803 (five digit odometer) but in the absence of a service history, this could be assumed to be 111803 (miles). The car comes with four speed manual transmission and could be described as a genuine collector's piece.

**PROVENANCE**

Sold: Stephan Welz & Co, The Estate  
Late Koos Minnaar, Graaff-Reinet,  
10 August 2005, lot 1

227



228



228

**1986 Mercedes Benz 420 SEC**  
**Two door coupé**

Vin No WDB26046A239370

Engine No 1696522014073

Veh Reg No BNV003F

Licence No CJ 74078

**R100 000 – 150 000**

The Mercedes Benz W126 design introduced a series of flagship vehicles in 1979 that set impressive new standards of technological refinement, safety and comfort, earning worldwide recognition and acclaim. The twelve year manufacturing run ostensibly ended in 1991, though it is interesting to note that some production continued at the Mercedes Benz South African plant for a further 2+ years. The 420 SEC was a 4.2 litre V8 engine two-door coupé version that came into being in 1985. The pillarless coupé was a comprehensively equipped express, providing comfortable accommodation for four adults with excellent ride and handling. This particular example is finished in 'Pajett Red' (a metallic maroon) with beige velour upholstery. It is reported to be in excellent condition throughout, the list of equipment includes automatic transmission, tilt and slide steel sunroof, electric memory seats, radio/CD unit, remote central locking/alarm, ABS, cruise control and alloy wheels. Recorded mileage is 77406, with full service history, the last service having been at 71452 miles.



229

229

**2002 Volvo S40 2.0 1 Saloon**

Vin No YV1VS17K92L860260

Engine No B420452732174

Veh Reg No GVK652W

Licence No CL 22454

**R50 000 – 80 000**

The S40 was Volvo's highly acclaimed compact executive saloon first introduced in 1995. In 2000 the 40 series was upgraded with a number of technical improvements - new engine management system, larger disc brakes, better suspension and steering, all of which served to enhance Volvo's reputation as a commendably 'safe' motor car. The condition of this S40 is commensurate with the remarkably low mileage of 48890 km, with full service history. Immaculate in white, with black leather interior, it is a high spec vehicle featuring automatic transmission, electric windows and mirrors, up-market sound system and mag wheels. An opportunity, perhaps, to acquire sensible, safe and practical transport in virtually new condition.

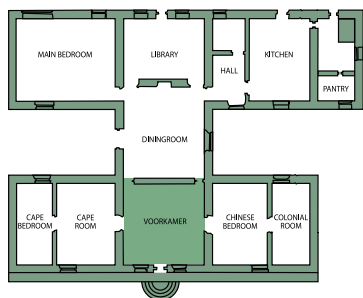
230

No Lot



# THE VOORKAMER





## THE VOORKAMER

231

**A garniture of three Dutch Delft De Vergulde Blompot tin-glazed blue and white snuff jars, 18th/19th century**  
the ovoid bodies decorated in underglaze-blue each depicting a plumed Calumet-smoking Indian seated on a pedestal before an urn, inscribed 'EINDHOVER No 8', 'MACCÚBA No 33' and 'ST VINCENT No 6' respectively, next to a barrel covered in tobacco leaves, the VOC monogram painted on a small box to the left and a shipping scene to the right, *each with large chips to rim and base, 28cm high, with associated brass covers (3)*

R18 000 – 24 000

231



231



231



232



233



232

**A Dutch Delft De Blompot tin-glazed blue and white snuff jar, 18th/19th century**  
similar to the preceding lot, the urn inscribed 'No 7', the rim restored, *with associated brass cover, underglaze-blue painted initials, 26cm high*

R5 000 – 7 000

233

**A Dutch Delft De Drie Klokken tin-glazed blue and white snuff jar, 18th/19th century**  
similar to the preceding lot, the urn inscribed 'PORTORICO', *with associated brass cover, fritting chips, underglaze-blue three leaf factory mark, 23cm high*

R6 000 – 8 000



234

**A Cape teak and yellowwood  
cupboard, 1760–1780**

the outset moulded cornice centred  
by a pierced leaf-scroll and foliate  
keyblock, with panelled doors and  
sides enclosing three *later* shelves and  
hanging-rail, on four massive paw-  
and-ball feet, *restorations*, 220cm high,  
120cm wide, 621cm deep

**R80 000 – 100 000**

**LITERATURE**

Deon Viljoen and Piér Rabe, *Cape  
Furniture and Metalware*, Cape Town  
2001, page 64–65, No 42

235

**French Provincial School**

18TH CENTURY

***A Gentleman Reading***

oil on canvas

76 by 60cm, oval

**R3 000 – 5 000**

236

**A Colonial rosewood,  
satinwood, teak and  
parquetry cupboard–on–  
stand, 18th century**

the outset moulded cornice above  
a pair of fielded panelled doors  
enclosing three shelves and three  
drawers, the stand with twist-turned  
legs on block and bun feet joined by  
a X-shaped stretcher, 202cm high,  
157cm wide, 65cm deep

**R80 000 – 100 000**

Frides Laméris, Nieuwe Spiegelstraat  
55, 1017 DD Amsterdam



234

237

**A Japanese Imari vase, late  
18th/early 19th century**

the baluster body painted with a  
stylised landscape, with pavilions and  
flowers between foliate and panelled  
borders, 36cm high

R8 000 – 10 000

238

**A Japanese Imari charger, late  
17th/early 18th century**

the centre painted with a carp, the rim  
with four diaper-shaped panels each  
painted with a *shi-shi* enclosed by a  
chrysanthemum and scroll ground,  
*restored*, 55cm diameter

R5 000 – 7 000

239

**A Japanese Imari vase, late  
17th/early 18th century**

of baluster lobed outline, painted in  
typical palette, the shoulder decorated  
with alternating fan-shaped panels,  
the body moulded in relief with  
chrysanthemum, *kiku* and prunus  
blossom before rocky outcrops,  
*damaged*, 40cm high

R6 000 – 8 000

Sold: Stephan Welz & Co, Cape Town,  
30 March 2004, lot 1016. Formerly the  
property of Mrs M Gusundheit





240

**A Dutch brass birdcage,  
19th century**

domed circular, with detachable tray and crossbar, on three feet, the sides fitted with two feeding bowls, *58cm high*

R6 000 – 8 000

240



241

**A Cape stinkwood child's chair,  
late 19th century**

the yoke-shaped top rail above three vertical splats, riempie seat, on square-section tapering legs joined by side stretchers

R1 200 – 1 500

241



242

**Two stinkwood gueridons**

in sizes, each with twist-turned and tapering hexagonal column, on three bracket-shaped legs, *the taller 118cm high (2)*

R1 500 – 2 000

245



245



243

**A pair of brass candlesticks,  
19th/20th century**

each with faceted and turned knob on a square base with canted corners, *17cm high*; a brass candlestick, on an octagonal base, *20,5cm high*; and another, raised on a circular base, *17cm high (4)*

R1 500 – 2 000

244

**Three Dutch brass spittoons,  
19th century**

in sizes, each with flared lip, compressed bulbous body and circular foot, *the tallest with a damaged foot, 13cm high (3)*

R5 000 – 7 000

245

**Two brass alms dishes,  
18th century**

each decorated with two spies from the Land of Canaan, the cavetto and rim punched with lozenge- and diamond-shaped bosses, *splits, the larger 40cm diameter (2)*

R9 000 – 12 000



246

246

**A Dutch Colonial hardwood and brass-mounted chest, 19th century**

the hinged rectangular top with brass bosses centring a brass plaque engraved with a fish, engraved corners, the sides with brass carrying-handles, on ring-turned bun feet, *restorations and repairs, 40cm high, 68cm wide, 38cm deep*

**R10 000 – 15 000**

247

**A brass alms dish, 17th century**

the centre decorated with two spies from the Land of Canaan, enclosed by a foliate border, the broad rim punched with a band of flowerheads, *29cm diameter*

**R6 000 – 8 000**

Golden Griffin, San Jose, California



248

248

**A Dutch Colonial hardwood, copper and brass-mounted deeds box, 19th century**

the rectangular hinged top and front applied with copper bosses and brass filigree pierced and punched mounts, the sides with carrying-handles, on ribbed block feet, *38cm high, 56cm wide, 34cm deep*

**R7 000 – 9 000**

249

**A Dutch brass parrot perch, late 18th century**

fitted with a pair of feeding bowls, with suspension hook, *60cm high*

**R5 000 – 7 000**

Rupert Gentle, Nr Pewsey, Wiltshire



249





250 part lot



251



252

250

**A near pair of Chinese flambé-glazed vases**

each with flared lip and bulbous body, *spurious six-character mark in underglaze-blue*, 34,5cm high; and a Chinese flambé-glazed bottle vase, late 19th/early 20th century, the red glaze streaked with cream and lavender blue, *spurious six-character mark in underglaze-blue*, 20cm high (3)

**R5 000 – 7 000**

251

**A Dutch Colonial silver-mounted Indian rosewood travelling writing-box, 18th century**

the rectangular hinged top applied with four bosses, the interior fitted with hinged compartments, brass ink and pounce pots, the front with pierced escutcheon and four smaller bosses, the sides with carrying-handles, on turned feet, 15,5cm high, 40cm wide, 28cm deep

**R20 000 – 25 000**

252

**A Cape teak and pine octagonal gateleg table, late 17th/early 18th century**

the top with a drop-leaf to one side above the triangular apron, raised on baluster-turned legs, the gateleg in two halves and with an iron hook, on bun feet joined by a T-stretcher, *restorations*, 69,5cm high, 142cm long, 100cm wide open

**R60 000 – 80 000**

Sold: Stephan Welz & Co, Cape Town, The Herbert Prins Collection, 21 & 22 October, 1997, lot 56

**PROVENANCE**

Mr I Bassett

**LITERATURE**

GE Pearse, *Eighteenth Century Furniture in South Africa*, Pretoria, 1960, pages 26 & 27, Fig 34, plate 4



253 details

## 253

**An important Cape stinkwood, beefwood, ebony and silver-mounted armoire, 18th century**  
the arched moulded cornice surmounted by foliate cresting, above a pair of panelled doors enclosing a shelf, the lock-plate engraved after the frontis of *Archetypa Studiaque Patris, Georgio Hoefnagelii*, 1592, the lower half applied with a pair of Cape silver handles above a pair of panelled doors enclosing a shelf, with canted corners carved with ebony panels headed by leaf-cresting, on three massive paw and ball feet, Cape silver mounts by Johan Hendrik Vos, 257cm high, 182cm wide, 52cm deep

**R800 000 – 1 000 000**

The engraving on the lock-plate of this armoire is copied from the frontis of the influential pattern book and one of the principal sources of seventeenth century still-life painting, *Archetypa Studiaque Patris Georgio Hoefnagelii*. The work was engraved by Jacob Hoefnagel (1573-1635), court painter to Emperor Rudolph II of Prague from 1602, under the supervision of his father Jours (1542-1601) last of the great Flemish miniaturists and manuscript illuminators.

### LITERATURE

Stephan Welz, *Cape Silver and Silversmiths*, Balkema, Cape Town, 1976, page 156, illustration mark 150







254

254

### English School

19TH CENTURY

*Lady Diana Feilding, third daughter of Basil, Earl of Denbigh*

oil on canvas

**R4 000 – 6 000**

A page from Burke's Peerage relating to Thomas Beckett Feilding, the subject's father, affixed to the reverse. Lady Diana married Rev Randolph Marriott DD. Rector of Durfield in 1731.



255

255

### English School

LATE 18TH CENTURY

*Portrait of a Clerical Gentleman*

oil on canvas

74 by 62cm

**R3 000 – 5 000**



256

256

### English School

19TH CENTURY

*Portrait of a Gentleman in a Blue Coat*

oil on canvas

55 by 42cm

**R2 000 – 3 000**

257

### A Dutch Delft blue and white garniture set, 18th century

each decorated with a courting couple seated before a canal within a moulded cartouche, the reverse with a spray of flowers, comprising: two beaker vases and three baluster vases, restorations, chips, underglaze-blue initials, the beaker vases 12,5cm high (5)

**R9 000 – 12 000**



257

258

**A Dutch East Indies Colonial coromandel, satinwood and ebony cabinet-on-stand, 18th century**

the moulded outset cornice above a pair of panelled glazed doors enclosing three adjustable shelves, with a frieze drawer below, the stand with a frieze drawer above a carved and pierced leaf-and-berry apron, on tapering square-section legs with leaf cresting, on block and turned bun feet joined by a twist-turned cross-stretcher, *62,5cm high, 100cm wide, 59cm deep*

R40 000 – 60 000

259

**A miscellaneous group of pewter wares, Dutch and English, 19th and 20th century**

including: three teapots, in sizes, *the largest 11cm high*; two cream jugs, in sizes, *the largest 11cm high*; a hot water pot, *13cm high*; and an oval teapot stand (7)

R900 – 1 200

260

**A pewter trencher, 18th century**

raised on an octagonal moulded base, *6cm high*; three further examples, with two spoons; and an 18th century white-glazed faience example, raised on three feet, *with restorations, 10cm high, with associated spoon* (8)

R1 500 – 2 000

261

**A Dutch brass teapot**

*11cm high*; a Danish brass circular dish, *14,5cm diameter*; and a Dutch electroplated teapot, *12cm high* (3)

R600 – 800

262

**A pewter covered tankard, possibly German, late 19th century**

the domed hinged cover with thumbpiece, *15cm high*; a Sheffield pewter tankard, early 20th century, *19cm high*; a set of six 'Crown & Rose' cast pewter egg cups, 20th century, and two further examples (10)

R800 – 1 000



258



263

**A pewter candlestick,  
19th century**

of baluster outline, the base with  
adjuster, 9cm high; a Dutch pewter  
vase, 9,5cm high; a pewter bottle  
vase, *some damage*, 15cm high; and a  
pewter ink-stand, 5,5cm high (4)

R800 – 1 000

264

**A pewter oval serving dish,  
London, 19th century**

with moulded border, *some distress*,  
27cm wide; two pewter plates; a  
pewter circular dish; a two-handled  
quail; a Sheffield pewter food-  
warmer, four pewter spoons, a sauce  
ladle and a soup ladle (12)

R1 500 – 2 000

265

**A Cape teak and mulberry  
child's chair, late 19th century**  
with shaped top- and midrails, riempie  
seat, on baluster-turned legs joined by  
three-quarter stretchers

R1 200 – 1 500

266

**A Cape stinkwood child's chair,  
early 20th century**

with wavy arched top rail and waisted  
baluster-shaped splat, riempie seat, on  
cabriole legs joined by side stretchers,  
*restorations*

R1 200 – 1 500



265



266

267

**Two stinkwood gueridons**

each with twist-turned and baluster  
column, on three bracket-shaped legs,  
*the taller 130cm high (2)*

R2 000 – 3 000



267

268

**A pair of brass candlesticks, 19th century**

each with baluster-turned column on a stepped circular base, the base fitted with an adjuster, 18cm high (2)

R900 – 1 200

269

**A pair of brass wall lights**

each with scrolling arm, the sconces engraved PAVOLO, D.C., with bracket fitting, 35cm long (2)

R8 000 – 10 000

270

**Two 'Kraak-porcelain' blue and white dishes, 17th century**

the centre of each decorated with flowers within scalloped panels painted with cell diaper and the emblem of Good Fortune, the rim with alternating foliate and cell diaper borders, underglaze-blue double-ring mark, rivets, repairs, the larger 22cm diameter; and a blue and white bowl, 17th century, the centre painted with a deer in a wooded landscape, enclosed by panels of fruit and leaves, the reverse loosely decorated with further panels, repairs, 15cm diameter (3)

R4 000 – 6 000



269



270

271

**A Japanese Arita blue and white pewter-mounted tankard, 17th century**

the baluster body painted with alternating panels of figures and landscapes, reserved on a *karakusa* ground, with later pewter handle, the hinged cover with shell thumbpiece, chip and hairline cracks, 28cm high

R8 000 – 10 000



271





274

272

**A blue and white bottle vase, 18th century**

the ovoid ribbed body painted with vertical panels of stylised flowerheads, the base bearing the VOC monogram, 22,5cm high

R9 000–12 000

273

**A pair of Japanese blue and white beakers, 18th century**

tapering cylindrical, painted with alternating panels of flowers and bamboo above a diaper border, red and gilt highlights, *one with firing fault to footrim*, 7cm high (2)

R600 – 800



275

274

**A 'Kraak-porcelain' blue and white dish, late 17th century**

the centre painted with a grasshopper on a rock and a butterfly amid flowering plants, the broad rim with radiating panels of stylised flowerheads and formal motifs, *repaired, rivet holes*, 36cm diameter

R4 000 – 5 000

275

**A Japanese Arita blue and white dish, late 18th/early 19th century**

the centre rondel painted with a tea-house in a landscape setting, enclosed by a border of large peonies and foliage, the rim with a geometric border, *repaired, riveted, glaze chips*, 47cm diameter

R5 000 – 7 000

276

**A Chinese Famille Rose plate, Qing Dynasty, 18th century**

enamelled and painted with a pair of crabs, the rim with large peony blossoms, *repaired*, 23cm diameter; six further examples, *damaged*; a Famille Rose bowl, Qing Dynasty, late 18th/early 19th century, painted with a frieze of figures, *damaged*, 9cm high; and a Chinese Famille Rose octagonal dish, 18th century, painted with a peacock and hen, *damaged*, 29cm diameter (9)

R900 – 1 200

277

**A Chinese Famille Rose five-piece garniture, Qing Dynasty, 18th century**

of baluster lobed quatrefoil section, each piece enamelled with sprays of peonies, prunus blossom and pomegranates issuing from a rocky outcrop, three with covers, *extensive damaged, finials lacking, enamel loss* 30cm high (5)

R4 000 – 5 000

Sold: Stephan Welz & Co, Cape Town, 30 March 2004, lot 999. Formerly the property of Mrs D A McCarthy

278

**A Colonial Indian rosewood kist, 19th century**

the hinged rectangular top inset with brass bosses, the sides applied with brass carrying-handles, on *later* bun feet, the interior with provision for divisions, 42cm high, 120cm wide, 59,5cm deep

R6 000 – 8 000



278

279

**South African School**

20TH CENTURY

*Landscape*

signed H Lemco, dated 53  
oil on board  
41 by 48cm

R800 – 1 200

and *A Cottage in a Landscape*,  
indistinctly signed, oil on card,  
24,5 by 37cm (2)

280

**An Isfahan carpet, Persia, circa 1930**

*condition: worn, sides fraying, faded*,  
510 by 351cm

R4 000 – 6 000

281

**A pair of armchairs, 20th century**  
upholstered in yellow linen (2)

R3 000 – 4 000

282

**A two-seater sofa, 20th century**  
upholstered in floral cotton, 160cm wide

R2 000 – 3 000

283

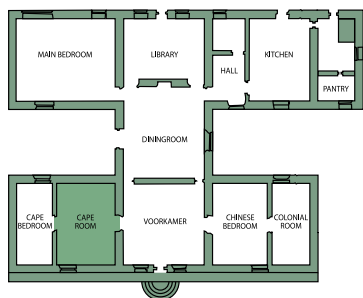
**A pair of upholstered ottomans, 20th century**  
each with buttoned seat, on a square  
plinth, 40cm high (2)

R300 – 400



# THE CAPE ROOM





## THE CAPE ROOM



286

284

### A Cape stinkwood and Robben Island slate-top table, 18th century

the moulded rectangular top above a frieze drawer, with a wavy apron, on cabriole legs with pad feet, 73cm high, 72cm wide, 56,5cm deep

R100 000 – 120 000

#### LITERATURE

Deon Viljoen and Piér Rabe, *Cape Furniture and Metalware*, Cape Town 2001, pages 28-29, illustrated

285

### Five Chinese Famille Rose bowls, Qianlong, 18th century

in sizes, variously decorated, *all with damage, the largest 29cm diameter* (5)

R2 000 – 3 000

286

### Edward Clark Churchill MACE

SOUTH AFRICAN 1863-1928

#### *Table Mountain from Milnerton*

signed

oil on canvasboard

26 by 54cm

R1 000 – 1 500

287

### Edward Clark Churchill MACE

SOUTH AFRICAN 1863-1928

#### *Table Bay*

signed

oil on canvas

14 by 36,5cm

R800 – 1 200

and *A View of Table Mountain from Rondebosch*, signed Harold Boyes, watercolour, 10cm by 21,5cm, foxed (2)



284



288

**A Dutch walnut corner cupboard, late 18th/early 19th century**

with shaped moulded cornice above a pair of conforming panelled doors enclosing three shaped shelves and a painted interior, the lower half with a pair of doors enclosing a shelf, on bracket-shaped feet, *restorations*, 216cm high, 130cm wide, 84cm deep

**R30 000 – 40 000**

Reindeer Antiques Ltd, Potterspury, Northamptonshire, 6 May 1994

**PROVENANCE**

The Countess of Inchcape, Addington Manor, Buckinghamshire

289

**A Chinese Export en grisaille bowl, Qianlong, 18th century**

painted with a continuous mountainscape, *repaired, damaged*, 10cm high; a Chinese Imari bowl, Qianlong, 18th century, the ribbed body painted with sprays of flowers, *damaged, chipped*, 8cm high; a Chinese Imari bowl, 18th century, the sides applied with shell-shaped handles, *damaged*, 20cm wide over handles; and four Chinese blue and white dishes, *all damaged and repaired* (7)

**R500 – 700**



288

290

**A set of four Chinese Famille  
Rose plates, Qing Dynasty,  
18th century**

each painted and enamelled with five  
carp, the rims enamelled with sprays  
of peony, black and gilt spearhead  
borders, *some damage*, 22,5cm  
*diameter*; and a Chinese Famille Rose  
teapot, similarly decorated, *lacking*  
*cover, spout restored*, 11cm high (5)

**R700 – 900**

291

**A Cape stinkwood neoclassical  
side chair, early 19th century**

with pierced fiddle-back, riempie seat,  
on square-section tapering legs joined  
by an H-stretcher, *restorations*

**R4 000 – 6 000**

Finch & Co, 2 Old Brompton Road,  
London, 18 November 2004

292

**A Cape yellowwood peg-top  
side table, late 18th/early  
19th century**

the moulded rectangular top with  
rounded corners above a frieze  
drawer, moulded shaped apron,  
on cabriole legs and hoof feet, *top*  
*distressed, restorations*, 71cm high,  
97cm wide, 70,5cm deep

**R80 000 – 100 000**

Sold: Stephan Welz & Co, The Koos  
Minnaar Collection, Graaff-Reinet,  
10 August, 2005, lot 30



291



292

293

**A Dutch Paktong kettle-on-stand,  
late 18th/early 19th century**

with domed cover and spigot, raised  
on three cabriole legs with pad feet, the  
conforming stand raised on three bun feet,  
*dents and restorations, 43cm high, including  
stand (2)*

**R4 000 – 5 000**

294

**Estelle VAN SCHALKWYK**

SOUTH AFRICAN 20TH CENTURY

*A Woman carrying a Bundle of Wood*

signed with the artist's initials, inscribed  
with the artist's name on the reverse  
oil on board  
18,5 by 24cm

**R800 – 1 200**

and South African School, 20th century,  
*Landscape with a Rondawel*, oil on canvas,  
38 by 48cm (2)

295

**A Cape stinkwood armchair,  
19th century**

with lattice back, caned seat, on square-  
section tapering legs

**R4 000 – 6 000**

296

**A Dutch brass alms dish,  
17th century**

circular, moulded in relief with two spies  
from the Land of Canaan, enclosed by an  
inscription, 'Anno.Domini. 1503.Ave.Gratia.  
Plena', the broad rim with lozenge and  
circular bosses, 40cm diameter; and a bass  
plaque, 19th century, similar, 18cm diameter  
(2)

**R8 000 – 10 000**

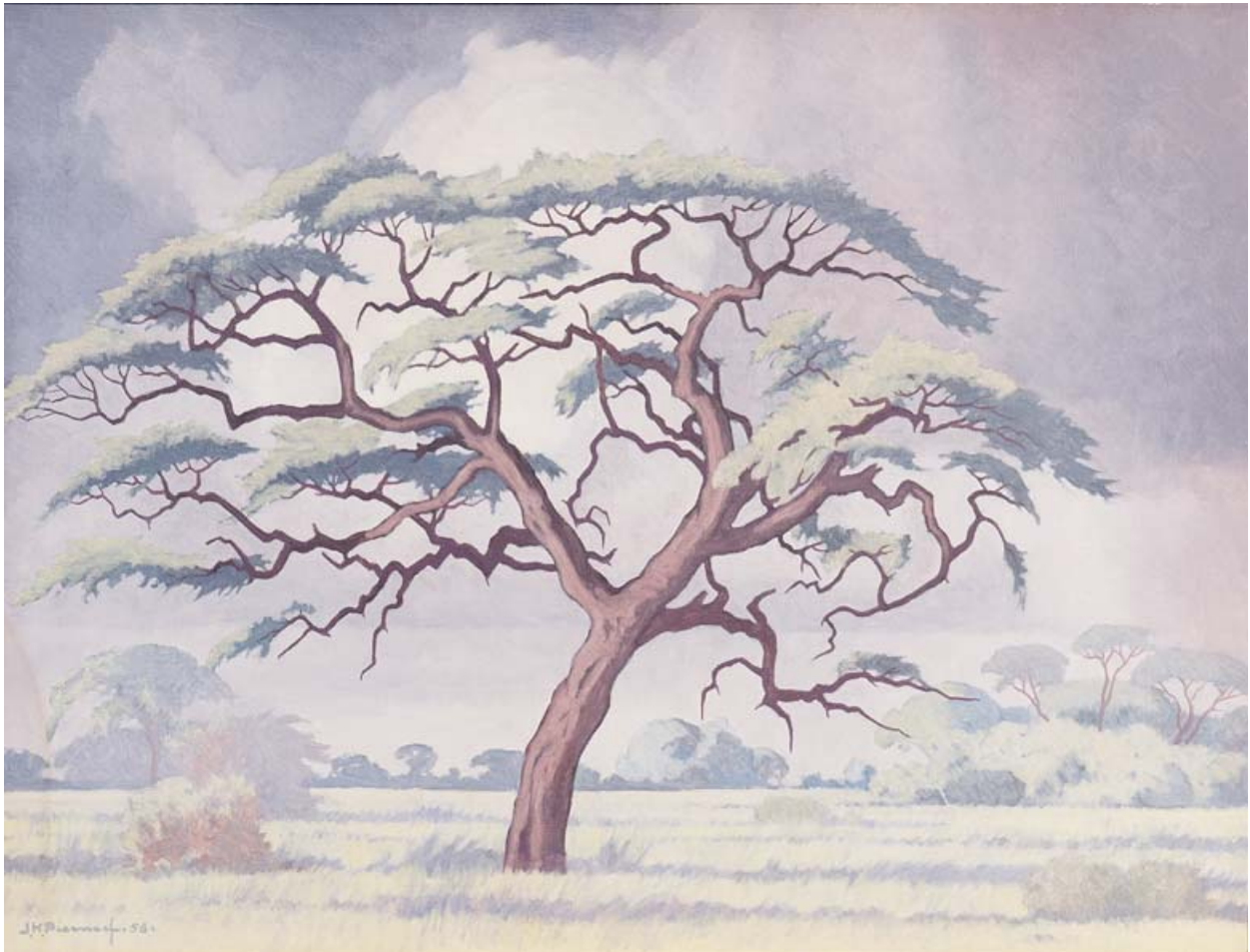


293



295





297

**Jacob Hendrik PIERNEEF**

SOUTH AFRICAN 1886-1957

*Kameeldoring, Kalahari*

signed and dated '56

oil on canvas

46 by 61cm

**R800 000 – 1 200 000**

Sold: Bonhams, London, 23 May 2007,  
lot 45

The Camel Thorn derived its name from *kameelperd*, the Afrikaans word for giraffe, as the tree and its pods, nutritious seeds and flowers provide sustenance for wild life and livestock, especially during droughts. The tree is thus vital to the food chain throughout the Kalahari, the large semi-desert stretching across Botswana, Namibia and South Africa that derived its name from the Tswana word *Kgala*, meaning 'the great thirst', or *Khalagari*, *Kgalagadi* or *Kalagare*, meaning 'a waterless place' and is known in Afrikaans as die Dorsland.

One of South Africa's most distinctive trees, the Camel Thorn or *Acacia erioloba* was one of Pierneef's most frequently painted trees, favoured for its dramatic silhouette that contributed bold, structural elements to his composition. With strong associations of resilience, durability and regeneration, here the centrally placed tree also symbolises oneness or spiritual unity.



298

298

**A Cape stinkwood, rosewood and padoukwood commode, circa 1780**

the moulded shaped top with outset rounded corners above three long drawers, the lower drawer with a moulded apron, bombé sides, raised on splayed legs, with later turned handles, 88cm high, 142cm wide, 65cm deep

**R120 000 – 150 000**

**PROVENANCE**  
Sir Herbert Baker

Sold: Sotheby's, Johannesburg, The Elizabeth Mark Collection, 29 April 1985, lot 102

Sold: Stephan Welz & Co, The Herbert Prins Collection, Cape Town, 21 October 1997, lot 68

cf. Deon Viljoen, Monique van de Geijn-Verhoeven and others, *Domestic Interiors at the Cape and in Batavia 1602-1795*, Waanders Uitgevers, Zwolle/ Gemeentemuseum Den Haag, 2002, pages 108 & 109

299

**A Japanese Arita blue and white dish, late 17th century**

of *kraak* type, the centre painted with a basket filled with flowers, enclosed by a foliate and leaf border, *chipped, repaired*, 38cm diameter; and another, *damaged*, 36cm diameter (2)

**R4 000 – 6 000**



299



299

300

**A Cape yellowwood and stinkwood cupboard, 18th century**

with arched cornice and plain key block above a pair of panelled doors enclosing three shelves and a *later* hanging rail, the lower section with a linenfold drawer, on ogee bracket feet, *with restorations*, 242cm high, 135cm wide, 65cm deep

**R80 000 – 100 000**



300



301



301

**Jacob Hendrik PIERNEEF**

SOUTH AFRICAN 1886-1957

*The Ausbergen, Namibia*

signed, dated '23 and inscribed

'Ausbergen' on the reverse

watercolour

26,5 by 36,5cm

**R200 000 – 250 000**

Sold: Bonhams, London, 23 May 2007,

lot 46

302

**George William PILKINGTON**

SOUTH AFRICAN 1879-1958

*Cape Town*

signed

oil on board

30 by 40cm

**R8 000 – 10 000**

Sold: Bonhams, London, 23 May 2007,

lot 44

302



304



303

**A pair of Paktong spittoons, 19th century**  
each with flared lip, bulbous body and circular foot,  
35cm high; and a brass example, 29cm high (3)

R12 000 – 15 000

304

**A Cape stinkwood four-chair-back settee, 18th century**  
with wavy horizontal bars, two-plank seat, on  
square-section legs joined by stretchers, 197cm long

R70 000 – 90 000

#### LITERATURE

Deon Viljoen and Piér Rabe, *Cape Furniture and Metalware*, Cape Town 2001, illustrated on pages 32-35 and on the dust jacket



303

305

**A Cape stinkwood and teak side chair, 18th century**

the shaped top rail above a vase-shaped splat and conforming midrail, with baluster-turned side supports, riempie seat, on baluster-turned legs joined by stretchers, on rounded feet, *restorations*

**R6 000 – 8 000**

Finch & Co, 2 Old Brompton Road, London, 18 November 2004



305

306

**A kareewood Victor or Fichter side chair, Laingsburg district, circa 1880**

the curved top rail and crossbar carved with roundels and flanked by overscroll reeded uprights, riempie seat with grooved and shaped seatrails and apron, on square notched and chamfered carved legs joined by an H-stretcher

**R15 000 – 20 000**

Sold: Stephan Welz & Co, The Herbert Prins Collection, Cape Town, 21 and 22 October, 1997, lot 107

**LITERATURE**

Michael Baraitser & Anton Obholzer, *Cape Country Furniture*, second revised edition, Struik, Cape Town, 1978, page 88, illustration no 290. According to local tradition, Victor chairs were made by a shepherd of that name while tending his flock, using a pocketknife.



307



306

307

**A kareewood Victor or Fichter side chair, Laingsburg district, circa 1880**

the wave-shaped top rail inlaid with circles, the midrail inlaid with a flowerhead flanked by overscroll reeded uprights, riempie seat, the wavy seatrails above an apron carved with a row of roundels, on square notched and chamfered carved legs joined by an H-stretcher

**R15 000 – 20 000**

**LITERATURE**

Michael Baraitser & Anton Obholzer, *Cape Country Furniture*, Struik, Cape Town, 1986, page 89, illustration no 291.





308

308

**A Dutch East Indies amboyna, teak and rosewood table, 18th century**

the rectangular top with moulded edge, the frieze with pierced foliate-carved spandrels, on tapering square-section baluster legs and block feet joined by an X-shaped stretcher, 72cm high, 157cm long, 73cm wide

**R60 000 – 80 000**

**PROVENANCE**

Deon Viljoen Fine Art, Cape Town, 2003

309

**A Chinese blue and white charger, Qing Dynasty, 18th century**

the centre painted with pavilions before a river and mountainous landscape, enclosed by cell diaper borders, *repaired*, 55cm diameter

**R3 000 – 5 000**

310

**Two Chinese Famille Rose dishes, Qing Dynasty, 18th century**

one decorated with a pheasant and peahen before a rocky outcrop, *both damaged and restored*, 32,5cm diameter; and two plates, similar, *damaged*, 23cm diameter (4)

**R300 – 400**



309 detail

311

**A Gouda 'Jan van Riebeeck Festival' commemorative blue and white plate, 1952**

transfer-printed after a design by WH Coetzer, 28,5cm diameter; a set of three Japanese VOC commemorative plates and a bottle vase, Kurita Museum, in sizes, the largest 30cm diameter; and a further example, 31cm diameter (6)

R1 400 – 1 600

312

**A set of six Chinese fan-shaped blue and white condiment dishes, 19th century**

the centre painted with a figure before a landscape, with iron-red highlights, 11,5cm wide, repairs and damage; and a set of three further examples, painted with bamboo, peony and a butterfly, 13cm wide (9)

R900 – 1 200

313

**An oak dresser, 19th century**

the rectangular outset moulded top above a pierced frieze with three open shelves flanked by a pair of cupboards inlaid with paterae, the associated lower half with four cupboard doors enclosing a shelf, 228cm high, 205cm wide, 31cm deep

R6 000 – 8 000

314

**A Tekke Turkoman fragment, Russia, 1950**

160 by 61cm

R1 000 – 1 500

315

**A Kurdi carpet, West Persia, 1930**

condition: worn 435 by 290cm

R2 000 – 3 000



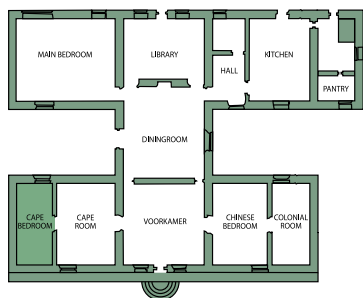
313







# THE CAPE BEDROOM



## THE CAPE BEDROOM

316

A Cape teak and witels four-poster bed, late 19th century with arched head- and footboards, tapering turned posts, *later canopy frame*, 232cm high, 202cm long, 125cm wide

R6 000 – 8 000



317

**A Cape yellowwood and  
stinkwood inlaid side table,  
19th century**

the rectangular top inlaid with a stylised  
flower, the corners inset with carved  
hearts above a plain frieze, the square-  
section tapering legs with notched and  
incised decoration, *71cm high, 90cm  
wide, 66cm deep*

R15 000 – 20 000



317 details

318

**An oak side table, 19th century**

the rectangular top above a frieze  
drawer, on tapering square-section legs,  
*restorations, 70cm high, 56,5cm long,  
40cm deep*

R2 000 – 3 000

319

**A miscellaneous group of  
Staffordshire china,  
19th century**

comprising: a plate, painted with a  
jonquil, *chipped, gilding worn, 21,5cm  
diameter*; a cup and saucer, painted with  
summer flowers, *riveted*; two teacups;  
a lozenge-shaped dish, loosely painted  
with flowerheads, *damaged*; and three  
figural lamp bases, *damaged* (9)

R300 – 500

320

**A burr-walnut apprentice's  
chest of drawers, 19th century**

the rectangular quarter-veneered top  
above three graduated drawers, on  
bracket feet, *29cm high, 32cm wide,  
16,5cm deep*

R1 500 – 2 000



317



321

**A beech and upholstered stool, early 20th century**

the rectangular seat raised on baluster-turned legs, with bun feet joined by stretchers, 92cm long

R2 000 – 3 000

322

**A mahogany toilet mirror, early 20th century**

with rectangular plate suspended between reeded posts headed by ball finials, on bracket feet, 41cm high, 37cm wide

R600 – 800

323

**A three-fold brass-mounted leather travelling mirror, early 20th century**

with concertina action, fitted with a clasp, 22cm high

R400 – 600

324

**A painted and gilt mirror**

with double-headed eagle and crown cresting, the sides with gilt foliate banding, 112cm high, 68cm wide

R800 – 1 000

325

**English School**

LATE 18TH CENTURY

*Portrait of a Lady in a Lace Cap*

oil on canvas  
69 by 58,5cm, oval

R3 000 – 5 000

326

**British School**

EARLY 19TH CENTURY

*Portrait of WA Beecroft, aged 7*

label on reverse inscribed with subject  
oil on canvas  
28 by 24,5cm

R800 – 1 200

327

**English School**

19TH CENTURY

*A Loving Couple*

watercolour  
27 by 17,5cm

R800 – 1 200

325



328

**South African School**

20TH CENTURY

*A Cape Farm; and A Cape Homestead, two*

both signed JLD Briel  
watercolour  
both 36 by 48cm (2)

R1 000 – 2 000

329

**A Belouch rug, East Persia, 1950**

condition: fair, 221 by 114cm

R2 000 – 3 000

330

**An Ersari rug, Afghanistan, 1930**

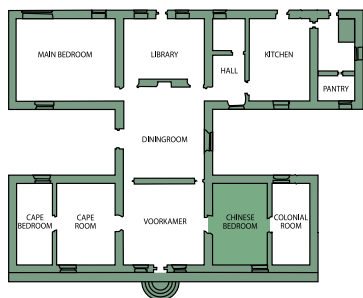
condition: worn, fraying, reduced,  
160 by 77cm

R800 – 1 200



## THE CHINESE BEDROOM





## THE CHINESE BEDROOM

331

**A Northern Chinese elm, painted and gilded wedding bed chamber and alcove, 19th century**

with open greeting and seating area in front and recessed sleeping compartment, each five-panelled side with pierced apertures and sliding shutters, the whole elaborately carved and pierced with panels of figures before balustraded landscapes and pavilions, the sleeping compartment with five painted panels, the ceiling carved with further foliate panels, raised on incurved bracket feet and stile supports, 221cm high, 221cm long, 210cm wide

R80 000 – 90 000



detail



details



332

**A nest of three Chinese hardwood stands, early 20th century**

in sizes, each with square top above a carved and pierced frieze, on moulded supports joined by stretchers raised on block feet, *the largest 24,5cm high, damaged*; and a Chinese rosewood stand, the circular top with wavy edge above a pierced frieze, on cabriole legs headed by lappet borders, the conforming base on shaped feet, *repaired, 20cm high (4)*

R1 200 – 1 500

333

**A South African stinkwood stool**

in the Chinese style, the circular seat above a shaped apron, on shaped bowed legs joined by a circular stretcher, *33cm diameter*; and a stinkwood corner stool with curved front, drop-in upholstered seat, on ring-turned legs (2)

R1 000 – 1 500

334

**A Chinese elm and red lacquered stool**

with rectangular plank top, on tapering splayed legs headed by carved lappet bracket supports, joined by side stretchers, *100cm long*

R3 000 – 4 000



335



335

**A pair of Chinese hardwood horseshoe-shaped armchairs, 18th century**

each with serpentine-shaped splat, panelled seat, on tapering legs joined by box-stretchers (2)

R30 000 – 40 000

336

**A Korean brass-mounted teak chest-on-chest, 19th century**

the rectangular top above four short drawers with a pair of doors below enclosing a void, the lower half similar, the detachable stand raised on bracket feet, the front applied with brass strapwork, *110cm high, 80,5cm wide, 37,5cm deep*

R10 000 – 12 000



336

337

**A Japanese Imari teapot and cover, modern**

moulded in relief with two panels of chickens enclosed by flowerheads, *painted signature, 14cm high*; a Japanese figure of a *shi-shi*, the crouching figure holding a ball, *damaged, 7cm high*; a Japanese earthenware Marutomoware bowl and cover, early 20th century, *stained, chipped, damaged, 9cm high*; a Japanese Hirado censor base, Meiji period (1865-1912), modelled with a dragon, on a square base raised on scroll feet, *damaged, 13cm high* (4)

R500 – 700

338

**A Chinese blue and white dish, late 19th century**

the centre painted with a small child playing a game with two female attendants within a landscape, the rim painted with a continuous border of double leaves and flowerheads, *rim chips, hairline cracks, repairs, 34,5cm diameter*; and a Chinese Famille Verte jar, 19th century, ovoid, decorated and painted with figures divided by jars, the base with stiff-leaf border, *now a lamp base, 18cm high, excluding shade* (2)

R700 – 900

339

**An oriental ebonised corner wall bracket**

pierced and carved with a pair of figures holding umbrellas, with two shelves, *50cm high*

R300 – 400

342



340

**A Japanese print, 19th century**  
with three Kabuki characters, *35 by 24cm*

R300 – 400

341

**Japanese School**

20TH CENTURY

*Takayama Curtains*

signed indistinctly, dated 90, and numbered 51/100  
hand-coloured lithograph  
*30 by 40cm*

R500 – 700

and three prints of bamboo, one titled *Zuishin-in Bamboo*, one numbered 35/100, one indistinctly signed and dated 89, *67 by 26cm* (4)

342

**A green-painted hanging display cabinet**

with a pair of astragal glazed doors enclosing two shelves, *53cm high, 80cm wide, 16cm deep*

R3 000 – 4 000

343

**A pair of Chinese blue and white sauceboats, Qianlong, 18th century**

of scalloped outline, painted with prunus blossom, *one lacking handle, damage, 8,5cm high*; and three further examples, *all with damage* (5)

R400 – 600

344

**A miscellaneous group of Chinese blue and white wares, 17th and 18th century**

comprising: three small plates, Kangxi, painted with sprays of flowers enclosed by moulded borders, *commendation and double-ring marks in underglaze-blue*, 16cm diameter; a saucer dish, Kangxi, painted with a couple in a landscape, *hairline crack, chips*, 11,5cm diameter; two teabowls; two salts; a coffee cup, a teacup and a saucer dish, *the saucer dish 12,5cm diameter*; and a bowl and cover, *all with some damage* (12)

R600 – 800

345

**A Chinese blue and white teapot and cover, Qianlong, 18th century**

painted with a medallion of flowers, spout *damaged*, 16cm high; and three further examples, two with metal handles, *covers associated* (4)

R600 – 800

346

**A Colonial Indo-Portuguese teak chest-on-stand, late 19th century**

the rectangular hinged top with bosses, the sides with carrying-handles, the *associated* rosewood stand with carved wavy apron, on ring-turned lobed legs, 93,5cm high *including stand*, 119cm wide, 61cm deep

R15 000 – 20 000



347

**A Korean porcelain jar, modern**  
compressed ovoid, loosely painted with blossom in underglaze-blue on a grey ground, 18cm high

R2 000 – 3 000

348

**A pair of Japanese Tokoro, 20th century**  
loosely painted with blossom, signed, 20cm high (2)

R500 – 700

349

No Lot

350

**A Chinese soapstone plaque, 19th/20th century**  
octagonal, the centre carved with a dragon within a circular medallion, 17cm diameter

R400 – 600





detail

351

**A Dutch Colonial teak,  
rosewood and ebony cabinet-  
on-stand, 18th century**

the rectangular top above a pair  
of panelled doors enclosing an  
arrangement of open compartments,  
a cupboard, a long drawer and two  
short drawers, the stand with a frieze  
drawer, on ring-turned baluster legs  
joined by an open platform stretcher,  
*restorations, 134cm high, 87cm wide,  
44cm deep*

**R50 000 – 70 000**

Tessier's Ltd, 26 New Bond Street,  
London W1



352

**A Chinese watercolour,  
19th century**

Painted on pith paper with a woman  
picking tea leaves, 12,5 by 14,5cm

R600 – 800

353

**An Italian fire-clay half  
shoulder doll, 18th century,  
possibly Naples**

the face with painted red mouth,  
inserted black enamel eyes, painted  
eyebrows, glued-on shoulder-length  
wig, the torso tapering to a waist-  
padded legs and upper arms, ceramic  
hands, wearing original lace-trimmed  
embroidered silk gown with pocket  
slits, elbow-length sleeves with lace-  
trimmed engageantes, pink laced  
bodice, cotton underskirt, green silk  
stockings and pink silk shoes, *right  
hand with one finger missing, chipping,  
nose with small chip, some distress,*  
42cm high

R15 000 – 20 000

354

**A pair of Chinese carved  
and painted wood ancestral  
figures, late 19th century**

each seated on a throne, one holding  
an attribute, the robes adorned with  
a dragon mask with green jewelled  
eyes and with red, blue and green  
highlights, *with damage, paint loss,*  
38cm high (2)

R4 000 – 6 000

355

**A Korean pine 'Soban' table,  
late 19th century**

the twelve-sided top raised on  
cabriole legs joined by side stretchers,  
27cm high, 42cm diameter; and a  
walnut and upholstered kidney-  
shaped stool, 20th century, on cabriole  
legs with shell-shaped pad feet (2)

R1 200 – 1 500

356

**A Korean ancestor portrait  
wall hanging, 19th century**

Painted on silk with the portrait of a  
gentleman wearing a rank badge and  
a black hat, 73 by 46cm, attached to a  
silk backing, *damaged*

R3 000 – 4 000



353

357

**A Cape teak and yellowwood  
cupboard, late 18th century**

the moulded outset cornice above a pair  
of panelled doors enclosing a shelf and a  
hanging compartment, on moulded ogee  
feet, *restorations,* 225cm high, 175cm wide,  
70cm deep

R100 000 – 150 000

**PROVENANCE**

Tulbagh Antiques, Tulbagh

358

**A pair of upholstered ottomans, 20th century**

(2)

R300 – 400

359

**A Kurdi runner, West Persia, circa 1930**

*condition: fair, slight wear at sides, ends repaired, 380 by 92cm*

R2 500 – 3 500

360

**A Melayar carpet, West Persia, modern**

*condition: worn, faded, sides and ends reduced, 303 by 197cm*

R1 500 – 2 000

361

**A Chinese rug, circa 1940**

*condition: good, 170 by 90cm*

R1 000 – 1 500

362

**A Melayar rug, modern**

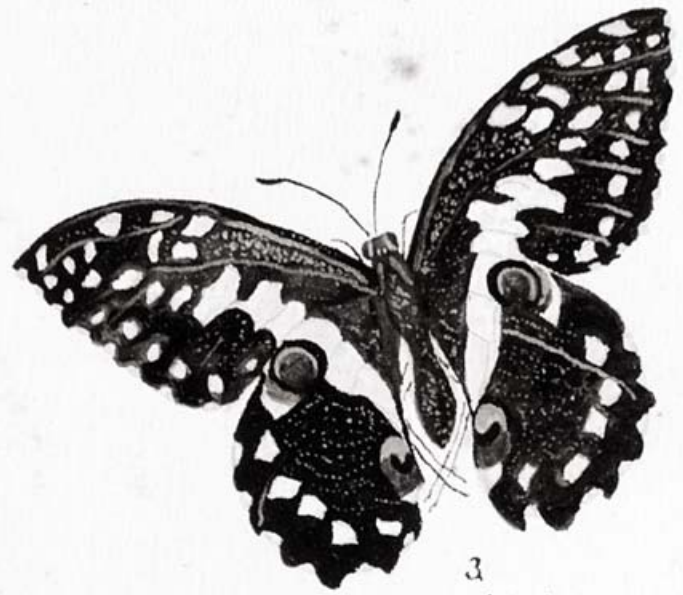
*condition: ends and sides reduced, faded, 72 by 52cm*

R400 – 600

357







*Papilio demoleus.*

3

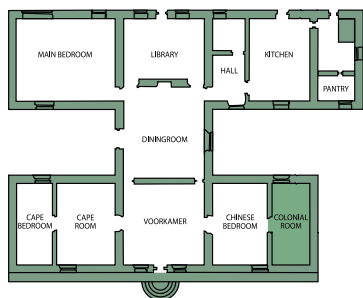
9. 11. 1902  
T. L. D. fec.



79

THE COLONIAL ROOM

45



## THE COLONIAL ROOM

363

**Isaac Louis DREGE**

SOUTH AFRICAN 1853-1921

*Thirty botanical watercolours depicting indigenous plants in and around Port Elizabeth*

variously dated between 1901 and 1912, from Volume V each inscribed with the family, genus and species, the date and place recorded, and with the distinctive features each approximately 30 by 20cm, framed (30)

R9 000 – 12 000

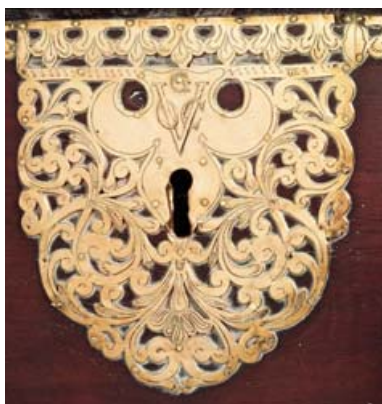


Isaac Louis Drège was born in Paarl, the son of Carl Friedrich Drège, a German apothecary, naturalist and traveller who travelled extensively into various parts of South Africa with his brother, Franz, collecting plants and zoological and ethnological specimens. He trained as an apothecary and settled in Port Elizabeth, collecting plants in the Albany, Uitenhage and Port Elizabeth districts, particularly at Aloes, north of Port Elizabeth. He published 'A preliminary list of flowering plants, ferns

and fern allies found in the Port Elizabeth District' in *South African Journal of Science*, 1912: pp. 151-175 (1913). He corresponded with Schonland and Burtt Davy and sent living plants to Kew in the United Kingdom.

Volumes I and II were donated to the Royal Botanical Gardens, Kew, UK in 2002.

cf. Mary Gunn & LEW Codd, *Botanical Exploration of Southern Africa*, Balkema, Cape Town, 1981, page 137



364 detail

364

**A Dutch Colonial teak, ebony and brass-mounted chest, 18th century, possibly Ceylonese**

the rectangular hinged top applied with brass bosses and pierced strapwork, the escutcheon plate engraved with the VOC monogram, the sides with brass carrying-handles, on bracket supports with bun feet, 76cm high, 135cm wide, 58cm deep

**R80 000 – 100 000**

Antiquiteiten, Amstersdam, 16 July 1999

365

**A small Dutch Colonial padouk, rosewood and ebony brass-mounted cabinet, 19th century**

the arched cornice above a pair of panelled doors and a drawer, on square-section tapering ring-turned and block feet, *lacking shelves, restorations*, 117cm high, 58cm wide, 27cm deep

**R12 000 – 15 000**



364



365



366



367



366

**A Colonial teak brass- and copper-mounted chest, late 18th/early 19th century**

the hinged rectangular top applied with a pair of kneeling figures, with pierced copper and brass filigree mounts, the sides with brass carrying-handles, on a moulded base, *distressed*, 31cm high, 61cm wide, 28cm deep

R6 000 – 8 000

367

**A Colonial teak and brass-mounted box, 19th century**

with rectangular hinged top, the sides and corners applied with brass filigree mounts and bosses, on ring-turned legs, 31cm high, 44cm wide, 28cm deep

R7 000 – 10 000

368

**An Anglo Indian rosewood 'Raffles' armchair, 19th century**

with reeded top rail, midrail and arms, the arms with fluted and turned supports, caned seat, on fluted tapering legs; and a Cape stinkwood Regency style side chair, 19th century, with reeded top rail above a bow-tie shaped midrail, riempie seat, on ring-turned baluster legs (2)

R7 000 – 9 000



368

369

**A Cape stinkwood child's chair, JJ Preiss, Robertson, late 19th century**

with curved top rail and conforming double midrails, riempie seat, on ring-turned baluster legs, the back seatrail stamped JJ Preiss, Robertson, bears paper label with inscription; and another, with plain top rail and midrail, riempie seat, on square-section tapering legs (2)

R2 000 – 3 000



369

370

**An Indian Colonial rosewood display cupboard-on-stand** with a pair of glazed doors moulded with oval fluted panels centred by a patera enclosing two shelves and a pair of drawers, with panelled sides, the stand on ring-turned baluster legs, 162cm high, 110cm wide, 39cm deep

R4 000 – 6 000

371

**A miscellaneous group of Chinese Famille Rose wares, 18th century**

including a bowl, loosely painted with sprays of flowers and diaper borders, 12cm high; eleven plates and three dishes, in sizes, *all with damage* (15)

R2 000 – 3 000

372

**Three brass spittoons, 18th and 19th century**

in sizes, *the tallest 36cm high* (3)

R9 000 – 12 000

373

**E\*\*A\*\*S\*\* FORBES**

SOUTH AFRICAN 20TH CENTURY

*Farm Buildings in a Clearing*

signed and dated 1928  
mixed media on paper  
16 by 14cm

R2 000 – 3 000

and South African School, 20th century, *A Flight of Steps in a Garden*, oil on board, 24 by 34cm (2)



372

374

**J\*\* N\*\* VAN RENSBURG**

SOUTH AFRICAN 20TH CENTURY

*Landscape with Trees*

signed and dated 45  
oil on board  
25 by 30cm

R600 – 800

and *A Landscape with Snow-capped Mountains*, oil on panel, 38 by 74cm (2)

375

**Richard BOBERG**

SOUTH AFRICAN 20TH CENTURY

*Lime Kilns, Mowbray*

signed  
oil on board  
24 by 34cm

R800 – 1 200

and South African School, 20th century, *A Thatched Cottage*, signed with the initials GW, oil on board, 21 by 21cm (2)

376

**A giltwood mirror**

rectangular, moulded in relief with foliage, 76cm high, 66cm wide

R400 – 600

377

**An Afshar rug, West Persia, 1930**

*condition: some wear, breaches,*  
165 by 130cm

R1 500 – 2 000

378

**A Keshan rug, Persia, 1950**

*condition: worn, faded,* 218 by 133cm

R800 – 1 200

Lot 637

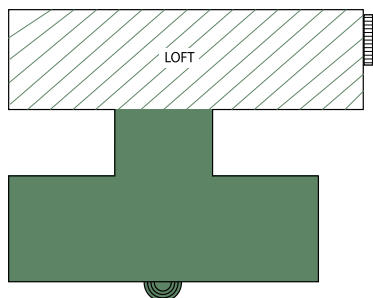








## THE LOFT



## THE LOFT

379

### A Cape stinkwood and tamboti side chair, 19th century

with wavy top- and midrails divided by a vase-shaped splat, riempie seat, on tapering square-section legs joined by stretchers, *restorations and repairs*; and a fruitwood example, with arched top rail above three reeded splats, riempie seat, on tapering square-section legs joined by an H-stretcher (2)

R5 000 – 7 000

380

### A Korean elm wood money chest, late 19th century

the rectangular detachable cover in two parts, straight sides, on bracket feet, 39cm high, 46cm wide, 31cm deep

R3 000 – 4 000

381

### A Korean teak document chest, late 19th century

the two-plank detachable top with iron flowerhead bosses, 23cm high, 57cm wide, 28,5cm deep

R3 000 – 4 000



379



382



382

### A Cape stinkwood Transitional side chair, late 18th century

with wave-shaped cresting above a pair of reeded splats, riempie seat, on chamfered square-section legs joined by a box-stretcher; and a Cape stinkwood and fruitwood Tulbagh side chair, early 19th century, with arched top rail above a pair of splats, the uprights with notched finials, riempie seat, on square-section legs joined by three-quarter stretchers (2)

R7 000 – 9 000



383

**A pair of Colonial hardwood,  
satinwood and rosewood  
benches**

each rectangular seat on baluster-  
turned legs joined by stretchers,  
*193cm long (2)*

**R30 000 – 40 000**



383 part lot

384

**A group of six cushions**

square, each with carpet fronts and  
velvet backing, *40 by 40cm (6)*

**R600 – 900**

385

**A jarrah wood bench**

with scalloped top above a panelled  
back, panelled seat, on square-section  
legs, *160cm long*

**R1 500 – 2 000**



386



388

386

**A Dutch oak foot warmer,  
18th century**

elaborately carved and pierced  
with bands of flowers, scrolls and  
foliage, the front carved with a rondel  
centring a pair of lovebirds flanked  
by two maidens holding flower-filled  
cornucopias, the reverse with the  
figure of Diana the Huntress, on bun  
feet, *20cm high*

**R5 000 – 7 000**

Garland Antiques, 296 Westbourne  
Grove, London W11, 2 December 2000



387 part lot



389 part lot



387

**A Dutch oak foot warmer, late 18th/early 19th century**

square, the pierced cover with brass swing-handle, the front with hinged door, carved with diaper, circular and floral borders, *18cm high*; and another, similar, carved with spiral and foliate motifs, on bun feet, *lacking hinged door, 20cm high* (2)

R2 000 – 3 000

388

**A Dutch oak foot warmer, 19th century**

the pierced cover carved with fan motifs, the front carved with a crest enclosed by foliate rondels, on a moulded square base, *18,5cm high*; and a teak example, smaller, with pierced cover, the front with a sliding panel carved with the initials 'HVO', the whole carved with circular panels, stars and fan-shaped motifs, *15cm high* (2)

R2 000 – 3 000

389

**A Dutch oak foot warmer, 18th century**

with pierced and carved cover above a hinged door, the base carved with a medallion centred by a shoe with a coronet and the inscription '1758 IIDB Mio Anno', on *later* bun feet, *18cm high*; and another example, 19th century, octagonal, with pierced cover and sides, with hinged door, *17cm high* (2)

R3 000 – 4 000



392

390

**A Dutch brass voetstoeffie, 18th century**

the pierced cover with swing-handle, the sides pieced and moulded with oval cartouches, one side hinged, *16cm high, 19cm square*; and two Dutch oak, fruitwood and copper voetstoefies, each with detachable pierced and carved wooden cover, the copper base mounted with a hinged pierced cover, one with carrying-handle, *the larger 16cm high, 47cm long, 24cm wide* (3)

R3 000 – 4 000

391

**A Cape yellowwood and teak voetstoeffie, 19th century**

the pierced fixed cover above a carved open front, on a plinth base, *23cm high*; and a pine and painted example, similar (2)

R1 000 – 1 500

392

**A pine chest, late 19th century**

with hinged rectangular top, the interior fitted with a compartment, straight sides, shaped apron, on bracket feet, *67cm high, 103cm wide, 50cm deep*

R6 000 – 8 000

393

**A brass bucket**

cylindrical, with swing-handle, raised on a circular foot, *21cm high*; and a pewter example, with flared lip, *19cm high* (2)

R500 – 700

394

**A George III mahogany armchair**

with reeded top rail and conforming midrail, leather-upholstered seat, on ring-turned legs; and a Victorian mahogany example, 19th century, with curved top rail above a foliate-carved midrail, scroll arm supports, drop-in seat, on ring-turned tapering legs, *restorations* (2)

R6 000 – 8 000



394

395

**A mahogany pedestal desk**

the rectangular top with gallery above three drawers, each pedestal with three graduated drawers, on a plinth base with castors, 74cm high, 122cm wide, 60cm deep

R6 000 – 8 000



397

396

**A Cape stinkwood corner chair, late 19th century**

the curved back applied with moulded cresting, riempie seat, on chamfered legs joined by a box-stretcher

R2 000 – 3 000



398

397

**A Colonial Indian rosewood Bible desk, 19th century**

with moulded hinged slope-front enclosing four small drawers and an open compartment, wavy apron and scroll feet, *formerly with bookrest*, 27cm high, 66cm wide, 55cm deep

R10 000 – 15 000

398

**A Cape child's stinkwood corner chair, late 19th/early 20th century**

with curved back, riempie seat, on square-section legs joined by stretchers; and a Cape child's stinkwood armchair, with reeded top rail and crossbar, riempie seat, on square-section tapering legs, *toprail loose* (2)

R3 000 – 5 000

399

**A Cape tamboti side chair, 19th century**

the back carved with roundels, riempie seat, on square-section tapering legs joined by three-quarter stretchers; and a hardwood example, with reeded top rail above a wavy midrail, riempie seat, on baluster-turned legs joined by three-quarter stretchers (2)

R5 000 – 7 000

400

**A Cape teak metal-bound pickle balie**

with tapering sides and lug handles, the cover with pie-crust border, *39cm high*

R1 500 – 2 000

401

**A Chinese blue and white vase, late 19th century**

of baluster outline, painted with a vase before a table enclosed by auspicious objects, the shoulders with *chilong* handles, *lip repaired, chips, 60cm high*; and another, modern, painted with the Eight Immortals in a landscape between lappet and diaper borders, *double-ring mark in underglaze-blue, 53cm high* (2)

R2 000 – 3 000



399



400



401



115



402

**A Dutch Colonial hardwood Bible desk-on-stand, 19th century**

the hinged slope-front with bookrest enclosing six drawers, the stand with frieze drawer, on ring-turned baluster legs joined by an X-shaped stretcher, on bun feet, 98cm high, 89cm wide, 66cm deep

R15 000 – 20 000

403

**A Cape stinkwood side chair, early 19th century**

the reeded top rail with small gable cresting, conforming midrails, riempie seat, on square-section legs joined by an H-stretcher; and another, with plain top- and midrails united by four splats, riempie seat, on tapering square-section legs joined by an H-stretcher (2)

R5 000 – 7 000

**LITERATURE**

Michael Baraitser & Anton Obholzer, *Cape Antique Furniture*, Struik, Cape Town, 2004, page 66, illustration 278, where the first chair is illustrated

404

**A Cape stinkwood Neo-classical side chair, 19th century**

with notched top rail above three splats, caned seat, on square-section tapering legs joined by an H-stretcher; and another, with *later* reeded top rail, square-section tapering legs joined by stretchers, *restorations* (2)

R3 000 – 5 000



402

405

**A Cape stinkwood and teak Neo-classical side chair, early 19th century**

with moulded curved top rail above five splats, the uprights carved with ribbons, caned seat, on reeded tapering square-section legs and block feet joined by stretchers; and a stinkwood example, with reeded and notched top rail above a pierced splat, reeded uprights, caned seat, on tapering square-section stop-fluted legs (2)

R8 000 – 10 000

406

**A stinkwood tub chair, early 20th century**  
caned back and serpentine seat, on cabriole legs

R1 200 – 1 500



403



404



405



406

407

**A teak and pine brass-bound balie**

with lug handles, the cover with pie-crust border and handle, 44cm high, 51cm diameter

R2 000 – 3 000

408

**A teak brass-bound water barrel**

cylindrical, the side with swing-handle and screw cap, 32cm diameter

R1 000 – 1 500

409

**A Cape stinkwood and teak side table, 18th century**

the rectangular moulded top with notched rounded corners above a *later* frieze drawer, on ring-turned baluster legs joined by an X-shaped stretcher, on bun feet, 76cm high, 95cm wide, 78cm deep

R40 000 – 60 000

410

**A South African yewwood gavel, 20th century**

and an *associated* turned wooden sounding block, circular with reeded borders, *damaged*, 4cm high (2)

R300 – 400

Sold: Stephan Welz & Co, Estate Late Koos Minnaar, Graaff-Reinet, 10 August 2005, lot 233



409



411



412



411

**A Cape fruitwood toiletjie chair, early 19th century**

with turned spindle back, riempie seat, on turned legs joined by stretchers

R5 000 – 7 000

412

**A Cape stinkwood toiletjie chair, early 19th century**

with spindle back, riempie seat, on turned legs joined by stretchers, *restorations*

R8 000 – 10 000

413

**A Cape pine four-poster bed, late 19th century**

with arched headboard, ring-turned baluster posts fitted with a canopy, *195cm high, 156cm wide, 205cm long*

R5 000 – 7 000

414

**A Cape stinkwood kist, 19th century**

with moulded rectangular hinged top, tapering sides, iron carrying-handles, *with restorations, 47cm high, 87cm wide, 57cm deep*

R8 000 – 10 000

415

**A set of six Cape teak Tulbagh style dining chairs, modern**

with pierced scroll and wave-shaped top rail above a pair of splats, riempie seat, on square-section legs joined by stretchers (6)

R6 000 – 8 000

Made by Paul Le Roux, Ashton



417

416

**An Indonesian teak occasional table**

circular, raised on a baluster turned column, on four hipped legs and scroll feet, *some distress, 72cm high, 102cm diameter*

R3 000 – 4 000

417

**A Cambodian or Burmese carved lacquer and gilt figure of Buddha, late 18th century**

with serene expression and detachable *ushnisha*, with elongated earlobes, seated in the position of subduing Mara, on a moulded oval throne, *some distress, 113cm high*

R15 000 – 20 000

418

**An Indian sandalwood and mother-of-pearl inlaid three-fold screen, late 19th century**  
each pierced fold with shaped cresting above an inscribed frieze, with panels of spindles and foliate motifs, *some damage*, 87cm high, each fold 60cm wide

R4 000 – 6 000

419

**Two Chinese satinwood and teak cupboards**

each with rectangular top above an arrangement of long and short drawers, with a pair of panelled doors below enclosing a shelf, on incurved feet, 73cm high, 63cm wide, 35cm deep (2)

R2 000 – 3 000

420

**A Korean elm wood scholar's table**

the rectangular top above a pair of frieze drawers, on bracket feet, *lacking locks, restoration*, 35cm high, 75cm wide, 41cm deep

R4 000 – 6 000

418



420



421

**A Korean elm wood low chest**

the rectangular top above an arrangement of three short and one long drawer, the sides with carrying apertures, *moulding lacking*, 35cm high, 81cm wide, 41cm deep

R4 000 – 6 000

421



422

**A mahogany travelling writing cabinet, 19th century**

the stepped rectangular top above a panelled hinged fall-front, enclosing an arrangement of pigeon holes and a leather writing surface, the sides with brass carrying-handles and swing locks, 49cm high, 72,5cm wide, 27cm deep

R3 000 – 4 000

422



423

**A brass alms dish, 18th century**

the centre moulded in relief with a large flowerhead enclosed by a punched border, the broad rim with a punched scroll border, 40cm diameter; and another, the centre moulded in relief with two birds within foliate and lozenge-shaped borders, 35cm diameter (2)

R8 000 – 10 000



424

**A Louis Vuitton monogram canvas, metal and brass-bound cabin trunk**

with hanging compartment, four drawers and a compartment below, with three clothes hangers and a trouser-press, painted with the initials 'JHT' and 'JHP', bears Louis Vuitton label, Paris, 70 Champs Elysee, 149 New Bond Street, internal suitcase lacking, scuffing, leather damaged, 44cm high, 112cm long, 55cm deep

R40 000 – 60 000

425

**Seven Kuba cloth cushion covers**

square, variously woven with geometric designs, *each approximately 48 by 38cm (7)*

R700 – 900

426

**A North West Persian carpet, circa 1950**

*condition: some wear, 425 by 310cm*

R6 000 – 9 000

427

**A Khellim, West Persia, circa 1950**

*condition: good, 162 by 110cm*

R2 000 – 3 000



424



428

**A Melayer runner, West Persia, circa 1930**

*condition: worn, 590 by 105cm*

**R2 000 – 3 000**

429

**A North West Persian rug, circa 1940**

*condition: overall wear, sides reduced, 130 by 133cm*

**R800 – 1 200**

430

**A North West Persian carpet, circa 1950**

*condition: fair, 290 by 237cm*

**R2 500 – 3 500**

431

**A Shiraz carpet, South West Persia, circa 1940**

*condition: worn, 235 by 178cm*

**R800 – 1 200**

432

**An Afghan carpet, circa 1940**

*condition: areas of wear, 325 by 250cm*

**R2 000 – 3 000**

433

**A Belouch prayer rug, East Persia, circa 1930**

*condition: overall wear, 145 by 95cm; and a Shiraz rug, Persia, 1940, condition: worn, 145 by 117cm (2)*

**R500 – 800**

434

**A Turkoman carpet, Russia, circa 1920**

*condition: fair, 290 by 175cm*

**R3 000 – 4 000**

435

**An Afghan carpet, circa 1930**

*condition: worn, 443 by 340cm*

**R4 000 – 6 000**

436

**A Belouch bag, East Persia, 1950**

*complete with backing, 290 by 66cm*

**R1 000 – 1 500**

