



KEERWEDER

1622

KEERWEDER

KEERWEDER

## Introduction by Dr Hans Fransen

One of the many old Cape farms that were given highly descriptive names is Keerweder, which in old Dutch could mean both “Come Again” or “Turn Around”. The latter would clearly refer to its position right at the head of the Franschhoek Valley – long before the construction of the Franschhoek Pass.

The name Franschhoek itself, of course, is equally meaningful: the “French corner” where so many French Huguenots settled in the 1680s, as demonstrated by the many farms with French names: Bourgogne, Champagne, La Dauphine, Cabrière. But as its Dutch name suggests, Keerweder predates the arrival of the Huguenots. It is in fact the oldest farm in Franschhoek (which itself first had a Dutch name, Olifantshoek, a charming reminder of the times when elephants came across the mountains to calf and feed in the fertile valley).

Keerweder was settled by Dutch East India Company employee Heinrich Müller from Basle around 1692, though the title deed is only signed 1695. But in 1701 it did become the property of a Huguenot, Estienne Niel. In 1828 it was bought by Jacobus Petrus Kriel, who played a prominent role in the establishment of the Franschhoek Dutch Reformed congregation and three of whose sons became men of the cloth. The best known of these was Abraham Kriel, born in 1850, who in 1902 founded an orphanage catering for Boer War orphans, a much respected institution that still exists and bears his name.

Most of the Franschhoek farms concentrated on viticulture. But Keerweder’s vines were hit hard by the 1886 phylloxera plague and the Kriel family were forced to take in paying guests. Positioned at the foot of the Franschhoek Pass it became a convenient stop-over and it reputed to be the country’s oldest guest house. Long known as Swiss Farm Excelsior, it was popular with honeymooners, visitors from the goldfields up north and for recuperation. Its guest book is now kept at the Franschhoek Museum. The farm remained Kriel property for a full 97 years.

We can assume that there must have been a dwelling on the farm ever since Müller’s days. It may well have stood on the site and even

formed part of the structure of the present homestead. But it was probably Kriel who in 1828, or soon thereafter, gave the house its present plan and appearance, as also suggested by its windows. These are of a transitional type between the Dutch and the British, with upper halves that slide down, as against the Dutch type in which the upper parts are fixed and resting on a transom.

The house soon became H-shaped, which can be regarded as the ultimate Cape Dutch plan in the ‘letter-of-the-alphabet’ development in which wings of standard 6-metres width are combined to form an approximately square dwelling. But archaeological investigations have established that it probably reached this shape via T- and H-shapes.

Like so many other Cape Dutch farmsteads, Keerweder almost certainly had end-gables, and probably also a centre gable in front and perhaps at the back. But towards the end of the 19th century it was much changed, with the thatch being replaced by corrugated iron at a lower pitch, which involved the removal of the gables and the insertion of small loft windows, and the addition of lean-to’s and a veranda.

Despite the Victorian alterations, more than enough of the original fabric was left intact to warrant a thorough restoration which was undertaken in 1992. In most respects, the building provided its own clues, the front wing being given multiple-concave outlines with a small pediment at the top – such as would conform to the date 1828 – the back wings getting half-hipped ends. For the front gable an informed guess produced a design with wings and a crown that corresponds with the same date. Keerweder is now, once again, one of the finest monuments in the entire Franschhoek Valley.

Hans Fransen

Unpublished sources:

C. Snipelisky (Arch.).

H.J. Deacon (U.S.), C. Rademeyer, B. Heydenrych (U.S.) 1992-2.

J.E. Malherbe (Huguenot Memorial Museum) 2012.



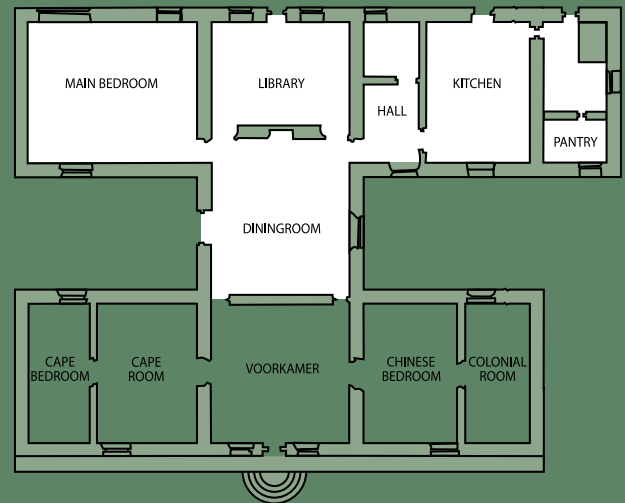




Keerweder, Franschhoek  
Monday 22 October - 10am

## Session 1

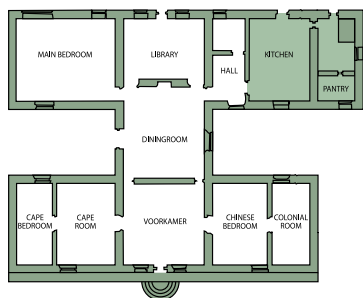
Lots 1-225







THE KITCHEN



## THE KITCHEN

1

### A set of fruitwood open hanging egg storage shelves, 19th century

composed of three graduated pierced tiers, bracket-shaped side supports, restorations, 48cm high, 77cm wide, 20cm deep

R2 000 – 3 000

2

### A Dutch brass wall-mounted cistern, late 18th century

with arched backplate centred by a moulded boss, hinged cover and spigot, 33cm high, 20cm wide; and a brass wall-mounted candle box, 19th century, rectangular with arched backplate and hinged cover, *distressed*, 25,5cm high, 35cm wide, 13cm deep (2)

R3 000 – 4 000

3

### A brass wall-mounted salt box, 19th century

the backplate applied with an urn, with rectangular incurved hinged cover, 16,5cm high; and another, cylindrical with moulded reeded borders, with pierced arched backplate, the reverse engraved with a flower, 20cm high (2)

R800 – 1 000

4

### A pair of Dutch brass wall sconces, 19th century

circular, pierced and moulded in relief with the arms of Amsterdam enclosed by a grape and vine border, *lacking candleholders*, 36cm diameter (2)

R2 000 – 3 000

5

### A Continental earthenware plaque, 18th century

modelled with a woman spinning, after the gingerbread mold *Le Femme de Mulhouse en rouet*, 18 by 12cm

R3 000 – 4 000

6

### Tim ROBSON

SOUTH AFRICAN 20TH CENTURY

*Still Life with Pomegranates; and Still Life with Oranges*, two

both signed watercolour the larger 21 by 33cm

R3 000 – 4 000

each with landscapes verso; and Nina van der Westhuizen, *Green Beans*, signed, oil on canvas, 30 by 35cm (3)



4 part lot



7

7

### A copper and glass hanging lantern, 19th century

of square outline, the top with crenallated rose and iron-ring wall mount, 53cm high, 22cm square

R4 000 – 6 000

Axia Antiques, Warminster, Wilts, 8 March 1998

8

**A set of twelve imbuia Tulbagh style dining chairs, 20th century**

each pierced top rail with wave-shaped cresting above a pair of splats, riempie seat, on square-section chamfered legs joined by box-stretchers (12)

**R12 000 – 15 000**

Made by Paul Le Roux of Ashton

9

**A South African pine and teak dining table, 20th century**

the rectangular top above a plain frieze, on square-section tapering legs, 77,5cm high, 210cm long, 104cm wide

**R7 000 – 9 000**

10

**A collection of Portuguese 'Chinese Armorial' wares, modern**

with diaper and foliate borders, including: a pair of candlesticks, a pair of sauce tureens, covers and stands, eight spoons, a pair of salt trenchers, a small oval tray, and nineteen plates, *printed factory mark, the candlesticks 21cm high* (36)

**R3 000 – 4 000**

11

**A set of ten David Read drinking glasses**

each conical bowl raised on a twist-turned air stem, on a circular foot, *engraved signature and dated '97, 22cm high*; and a set of ten David Read wine glasses, each bell-shaped bowl moulded with sepals, raised on a circular foot, *engraved signature and dated '97, 20cm high* (20)

**R2 000 – 3 000**

12

**A yellowwood and pine display cupboard, 19th century**

with a pair of glazed doors enclosing two shelves, the lower section with a pair of panelled doors enclosing two shelves, with wave-shaped apron on bracket feet, *restorations, 188cm high, 104cm wide, 48cm deep*

**R8 000 – 10 000**

Paul Le Roux of Ashton

13

**Three glass jugs, 20th century**

one with strawberry prunts, *21cm high*, another, press-moulded with electroplated cover, the thumbpiece in the form of a pineapple, *26cm high*, and a blue example, *19cm high* (3)

**R900 – 1 200**

14

**A Chinese silver-mounted blue and white dish, 18th century**

circular, with *later* Dutch silver swing-handle, *repaired, 22cm diameter*; a Chinese blue and white chamber pot, late 18th century, *damaged, 11cm high*; a Chinese blue and white octagonal dish, 18th century, painted with a riverscape, *damaged, 25cm wide*; and two Chinese blue and white covers, 18th century, in sizes, *the larger 30cm wide* (5)

**R1 500 – 2 000**

15

**A Portuguese faience blue and white tobacco box and cover, modern**

painted in the Dutch style, the finial modelled with a seated boy, *20cm high*; a German pewter-mounted stoneware flagon, modern, modelled with the masks of a bearded man in olive-green glaze, *23cm high*; a Chinese craquelure bottle vase, modern, *24cm high* (3)

**R600 – 800**

16

**A Karen Sinovich stoneware jug, 1997**

cylindrical, painted with the inscription 'A Merry Heart Goes All the Way', incised signature, *26cm high*; a Daan Vervey plate, signed and dated 1997, painted in blue with the portrait of a woman, *21,5cm diameter*; and a flower-shaped yellow and blue jug, *8cm high* (3)

**R300 – 400**

17

**European School**

20TH CENTURY

*Still Life of a Helmet, a Jug and a Pistol*

signed R Bech

oil on board

43 by 54cm

**R1 000 – 2 000**

18

**A stoneware two-handled jar, 20th century**

the moulded rim with lip, the shoulders and handles in a treacle-coloured glaze, *lip restored, chip to handle, 38cm high*

**R500 – 700**



19

**A pine dresser, 19th century and later**

with three open shelves, the lower half with four drawers and a pair of cupboard doors enclosing a shelf, on square-section tapering feet, 193cm high, 242,5cm wide, 52,5cm deep

R5 000 – 6 000

20

**A large copper tavern coffee pot, late 18th century**

the side with turned wooden handle, the opposing side with iron handle, domed cover, dents, 28cm high

R5 000 – 7 000

Rupert Gentle, Wiltshire, 15 November 2000

21

**A copper and brass post horn, 19th century**

70cm long; and a copper and brass bugle, 22cm diameter (2)

R2 000 – 3 000

22

**A Dutch copper potato hook, 19th century**

with scythe-shaped blade, turned handle with hook terminal, 50cm long

R2 000 – 3 000

23

**Two copper skimmers**

the larger 57cm long; a brass and copper example, 52,5cm long; and a copper double-ended spoon, probably Dutch, 34cm long (4)

R1 500 – 2 000

24

**A copper and brass post horn, 19th century**

124cm long; and a wicker case with wooden support, 130cm long (2)

R2 000 – 3 000

25

**A large copper kettle, possibly Dutch**

with fixed grip handle, dents, 35cm high; and a copper Belling kettle, square, with fixed strap handle stamped 'Special Kettle for Use with Belling Electric Cookers', later spout, 21,5cm high (2)

R2 000 – 3 000

26

**A copper 1-gallon milk can and cover**

stamped TSP, the shoulder applied with a brass label stamped 'T4 1.2 VOL. N.K.S. KOOP. K.Y. LEEG. J.C. RABIE. BELMONT'; with swing handle, 27cm high; and a large copper cover, rectangular, with strap handle, 56cm long, 40cm wide (2)

R1 000 – 1 200

27

**A large copper circular dish**

with rolled rim, 52,5cm diameter

R1 000 – 1 500



25



20



21 part lot



21 part lot



22



24



28

**A copper surveyor's document cylinder**

with detachable cover, stamped 'BTL',  
46cm long

R2 000 – 2 500

29

**Two copper and brass hot water bottles**

one circular, one oval, *the larger 30cm long*;  
a copper warming pan, late 19th century,  
with turned wooden handle, *97cm long*;  
another, *lacking handle, 28cm diameter*  
and a copper hot water reservoir, J & CG  
Bolinders MVAB, Stockholm, with spigot,  
*61cm long* (5)

R2 000 – 3 000

30

**A copper and brass saucepan and cover**

the shallow pan with spout, the sides  
applied with handles, *31cm wide over  
handles*; a copper saucepan, cylindrical  
with spout, the side applied with a short  
brass handle, *23cm high*; a copper warmer,  
cylindrical, with elongated foot, pouring  
spout and handle, *44cm long*; and a copper  
oval cover with spout, *25cm long* (4)

R1 500 – 2 000

31

**Two Victorian copper funnels**

conical, one with loop handle and pouring  
lip, the other with a long handle, *the larger  
26,5cm high*; and a copper and brass  
funnel, *32cm long* (3)

R1 200 – 1 500

32

**Two copper coffee pots**

*one with damaged handle and replaced  
brass base, the taller 21cm high*; a copper  
5-gill teapot, *17cm high*; and a copper and  
brass kettle, with fixed handle, *associated  
cover, formerly with a stand, 22cm high* (4)

R600 – 800

33

**Two copper and brass tankards**

in sizes, each with bulbous body raised  
on a circular foot, *the taller 14cm high*; a  
copper mug, with rolled rim and strap  
handle, *9,5cm high*; and a copper beaker,  
*12cm high* (4)

R1 000 – 1 200

34

**Two copper saucepans**

in sizes, one stamped 'GW19', each with  
iron handle, *the taller 16cm high*; and a  
copper and brass saucepan, the side  
with pouring spout, with turned wooden  
handle, *the base with dents, 10,5cm high* (3)

R1 500 – 2 000

35

**A copper rain gauge**

funnel-shaped, on a rectangular base,  
*24cm high, incomplete*; and a copper can,  
tapering cylindrical, with strap handle,  
*14cm high* (2)

R1 000 – 1 500

36

**A late Victorian copper mould, circa 1890**

cylindrical, *stamped Jones Bros. Down St.  
W, 8cm high*; a circular mould, *16,5cm  
diameter*; a miniature copper jelly mould,  
*4,5cm high*; a pair of copper dishes, *24,5cm  
diameter*; and a copper bowl, tapering  
oval, *damaged, 10,5cm high* (6)

R1 500 – 2 000

37

**A copper frying pan**

with straight sides, applied with an iron  
handle, *31cm diameter*; a small copper  
saucepan, with rolled rim, applied with a  
flattened tapering elongated handle, *35cm  
long*; and two copper oval dishes, in sizes,  
each with rolled rim, the sides applied  
with brass rings, *the larger 40cm long* (4)

R2 000 – 3 000

38

**A pewter coffee pot, I Vickers, 19th century**

with *later* finial and wooden handle,  
*24cm high*; a pewter jug, *22cm high*; and a  
pewter teapot with a wooden handle, *all  
with dents, some damage* (3)

R800 – 1 000

39

**A steel four finger straight pull corkscrew, late 19th century**

with twist-turned steel worm; a straight  
pull corkscrew, with turned wooden  
handle and a steel pocket corkscrew (3)

R1 800 – 2 400

40

**A Benham & Sons copper bowl**

circular, with rolled rim, the side applied with a handle, the base engraved with the initials WKD, stamped with monogram and maker's name, Wigmore St, London, *35cm diameter*; a copper circular sieve, with rolled rim, with pierced flowerhead base, the side applied with a brass ring, *30cm diameter*; and a copper shallow circular dish, *31cm diameter* (3)

R3 000 – 4 000

41

**An Avery 2lb kitchen scale, 20th century**

*brass dishes and weights associated, 19cm high*; a brass cutlery tray, with fixed strap and turned wooden handle, shaped rectangular with three divisions, *some damage, 38cm long*; a brass muffineer, cylindrical, with domed pierced cover, the side applied with a strap handle, *dents, 10,5cm high*; and a brass soup ladle, *repairs* (4)

R3 000 – 4 000

42

**A copper grain shovel**

with turned wooden handle, *40cm long*

R300 – 400

43

**A brass ear trumpet**

with flared lip, *62cm long*

R1 500 – 2 000

44

**A brass ornamental horn**

*40cm long*; a brass lion, *formerly a fire dog, 20cm high*; and a brass and steel fire dog (3)

R2 000 – 2 500

45

**A brown painted pine cupboard, late 19th century**

with a pair of panelled doors enclosing four shelves, *128cm high, 50,5cm wide, 38cm deep*

R2 000 – 3 000

46

**A collection of Dutch polychrome Delftware, 18th and 19th century**

including: a 'canary' plaque painted with a bird in a cage, *repairs, puce painted initials, 26cm high*; two plates, in sizes, painted with a stylised pavilion and birds, *both damaged and repaired, the larger 22,5cm diameter*; and another, painted with a vase of flowers, *repairs, painted initials, 24cm diameter* (4)

R1 500 – 2 000

47

**A brass measure**

with tapering sides and spout, *13cm high*; a set of five graduated brass beakers, probably Indian, *the tallest 15cm high*; and a brass and silvered beaker, engraved with panels of scrolls and flowers, *18cm high* (7)

R700 – 900



35

35



40 part lot



40 part lot



42



48

**A Dutch oak spoon rack, late 17th century**

the sides carved with the profiles of a lady and a moustachioed gentleman, fitted with six trefoil and six Apostle style pewter spoons, *47cm high, 54cm wide* (13)

R4 000 – 5 000

49

**A pair of wrought-iron wall candleholders**

each with two candlearms, drip-pans, with heart-shaped bracket, *25cm high*; and two tin corner candleholders, in sizes, *the larger 45cm high*, and two further examples (6)

R800 – 1 000

50

**A Chinese blue and white Nankin tureen with associated cover, late 18th century**

the octagonal body painted with land- and riverscapes, the sides with hare-head handles, the *associated* cover with scroll handle, *hare's head replaced, cracks, 21cm high*; a Chinese blue and white Nankin shell-shaped dish, early 19th century, *20cm wide, chips*; and a small Chinese blue and white Nankin tureen base, early 19th century, the sides with hare-head handles, *repaired, 18cm wide over handles* (3)

R1 500 – 2 000

51

**A pine cupboard, late 19th century**

the moulded rectangular top above a pair of drawers, with a pair of doors below enclosing a shelf, on square-section block feet, *121cm high, 94cm wide, 47cm deep*

R4 000 – 6 000

52

**A pine desk**

with bow-fronted top above an open shelf flanked by three drawers, on a plinth base, *81cm high, 120cm wide, 40cm deep*

R1 500 – 2 000

53

**A copper circular dish**

with rolled rim, *41cm diameter*

R1 500 – 2 000

54

**A copper can**

rectangular, the moulded strap handle stamped 'CO. 1^G /3 1918', with a screw-on cover, *27cm high*; a copper lamp measure, stamped 'J Foot & Son, London', *9cm high*; and a copper funnel with rolled rim, *9,5cm diameter* (3)

R1 200 – 1 500

55

**A miscellaneous group of copper and brass wares**

including a pedestal dish, *9,5cm high*; a rectangular flower trough, *23cm wide*; a wall vase, *14cm high*; a candle box, *15,5cm high*; a circular dish with everted rim; an oval vase raised on a circular foot, *16cm high*; a pair of brass curtain tie-back brackets; and a Victorian brass door fingerplate, *impressed numerals, 31cm wide* (9)

R2 000 – 2 500

56

**Jack (Jacobus) PIETERS**

SOUTH AFRICAN 1886-1977

*Study of Roses*

signed and dated 1951, inscribed with the title on the reverse

oil on canvas  
45 by 50cm (3)

R3 000 – 5 000

and two further paintings, *Still Life of Fruit on a Table*, signed Geo. de Bliquy, *47 by 58cm*; and *Still Life of Sunflowers*, unsigned, *30 by 39cm*

57

**A group of Le Creuset green enamel cast iron pots, modern**

including: a frying pan, *26cm diameter*; a covered saucepan with pouring lip, *19cm diameter*; another, *25cm diameter*; a two-handled saucepan and cover, *25,5cm diameter*; another, *34cm diameter*; a saucepan with double lip, *19cm diameter*; a two-handled pot and cover, *36cm wide over handles*; another, *32cm wide over handles*; two Emile Henry green-glazed oven dishes; and a Pearsons covered dish (Qty)

R4 000 – 6 000

58

**A miscellaneous group of South African stonewares, 20th century**

including: a dish of petal outline, Ineke Nicolle, *impressed with the initial N, 30cm diameter*; two two-handled dishes; two bowls, one decorated with a crab; a vase; two further examples, Ineke Nicolle; two covered jars and a marmalade jar and cover, Joy Webber, modern (Qty)

R1 500 – 2 000

59

**A set of fourteen Royal Doulton 'Milano' pattern plates, modern**

in sizes, and a teapot, milk jug and covered sugar bowl, en suite, *printed factory mark*, 26cm diameter; and three Rosenthal studio-line plates, Dorothy Hafner, 1980s, triangular, each with geometric border, 28cm wide (Qty)

R1 000 – 1 500

60

**A David Walters celadon-glazed drinking set, modern**

comprising: two jugs, in sizes, and eleven mugs; another set, cream-glazed, comprising: nine mugs, a jug, six bowls, four pedestal bowls, seven coffee cups and seven saucers; a David Walters bowl moulded with leaves and berries; another example; a David Walters celadon bowl, six coffee mugs and eleven covered cups; a pair of earthenware green-glazed oval dishes, John Wilholm, *the larger 41cm wide*; three glazed bowls and an oval white and black dish, H K Nash, 1983, 32,5cm wide; a stoneware bowl, impressed CG; and a celadon-glazed pod-shaped dish, J Newdigate, modern (Qty)

R2 000 – 3 000

61

**A large cast iron spoon**

with pierced terminal, 48cm long; a set of four metal wall-mounted Tenuate kitchen utensils; and a wrought iron chandelier-snuffer, 85cm long (6)

R400 – 600







62

**A miscellaneous group of four jugs and a sugar bowl, 20th century**

including two milk jugs, a sauce boat, and a blue and white example, *the tallest 17cm high (5)*

R200 – 300

63

**A miscellaneous group of four jugs**

*one repaired, the largest 22cm high (4)*

R300 – 500

64

**A miscellaneous group of five jugs and a covered bowl, 20th century**

*repairs, the tallest 17cm high (6)*

R300 – 400

65

**A miscellaneous group of glass jugs**

including three clear glass, *one cracked*, a blue and an opaline orange example, *the tallest 23cm high (5)*

R600 – 800

66

**A miscellaneous group of clear glass jugs**

variously cut, *the tallest 31cm high (4)*

R400 – 600

67

**A Colonial teak wall-mounted lantern case**

the square frame with glazed sides and shaped arched backplate, on bun feet, *48cm high*

R300 – 400

68

**A Colonial brass-mounted pipe-rack**

pierced and incised with a pair of figures smoking, the lappet-shaped rack with provision for seven pipes, on a *later* shaped wooden backboard, *46cm high*

R500 – 600

69

**A fruitwood wall-mounted hat and coat rack**

with five rails and four pegs, *60cm wide*

R1 000 – 1 500

70

**A Minton part-tea service, 1868-1910**

each piece printed with swags of roses entwined with blue ribbons, comprising: four tea cups, nine saucers, in sizes, five tea plates, two sandwich dishes, and a circular dish, *impressed MINTON, and impressed date cyphers 23,5cm diameter*; and a white and gilt egg cruet stand, with seven egg cups and a pepper, the handle in the form of a toast rack; and another example, Moabit, Berlin, M. Schuman & Son, circa 1850, *underglaze blue mark, SPM Germany, lacking egg cups and spoons, handle damaged, 15cm high (Qty)*

R1 000 – 1 500

71

**A pair of Shorter & Son Ltd fish tureens and covers, 1913–1946**

*27cm wide; 6,5cm high; two sauce boats and a stand en suite, green printed factory mark, 9cm high; ten white-glazed plates, modern, each moulded with the silhouette of a fish, 24cm wide; four dishes, variously shaped and painted with fish; and a Wiesenthal blue and white tureen and cover printed with shells, 10cm high (Qty)*

R900 – 1 200

72

**A miscellaneous group of glass wares**

including: two shaped cut-glass bowls; a vase; two jelly moulds; a Simax casserole dish; three bowls and a lemon squeezer (Qty)

R400 – 600

73

**A pair of Wedgwood Beatrix Potter 'Peter Rabbit' mugs, modern**

six Royal Worcester ramekins, a Copeland Spode blue and white leaf-shaped dish, and a quantity of miscellaneous bowls, plates and serving dishes (Qty)

R1 500 – 2 000

74

**A set of twelve Woburn Abbey 'Sèvres' style enamel picnic plates, modern**

two Wallace Collection 'Sèvres' style enamel picnic plates and a Waddesdon Manor 'Sèvres' style enamel tray, modern, *51cm wide*; a miscellaneous group of plastic tumblers, wine glasses and beakers; and three baskets (Qty)

R300 – 400

75

**A Nina Shand and Paul de Jongh stoneware jug, modern**

*27cm high; a black-glazed stoneware example, crack, 22cm high; and an Oriental white-glazed bottle vase, modern, rim repaired, 30cm high (3)*

R300 – 400

76

**A miscellaneous group of seven glass vases**

including two cut-glass examples, *the tallest 30cm high (7)*

R300 – 400

77

**Four Chinese blue and white plates, Qianlong, 18th century**

each painted with a basket enclosed by a radiating foliate border, *chips, 22,5cm diameter*; another, the centre painted with The Three Friends, *formerly with rivets, 28cm diameter*; and a miscellaneous group of 18th century Chinese wares, *all damaged (Qty)*

R2 000 – 3 000

78

**A miscellaneous group of Oriental blue and white wares, modern**

including ten side plates, a pair of Chinese covered chocolate cups, a pair of covered cups, a tea bowl, a sake bottle and three vases, *the tallest 12cm high (Qty)*

R1 200 – 1 500

79

**A Genet part coffee service, modern**

decorated with blue, green and white stripes; and a miscellaneous group of blue and white wares (Qty)

R1 500 – 2 000

80

**A miscellaneous group of baskets (Qty)**

R300 – 400

81

**A trug, The Trug Store, East Sussex**

and a miscellaneous group of baskets (Qty)

R300 – 400

82

**A Chinese écru linen tablecloth and twenty-four napkins, modern**

each stitched with borders of flowers, *the tablecloth 500cm long, 172cm wide (25)*

R1 000 – 1 500

83

**A set of twelve Indian place mats and twelve napkins, modern**

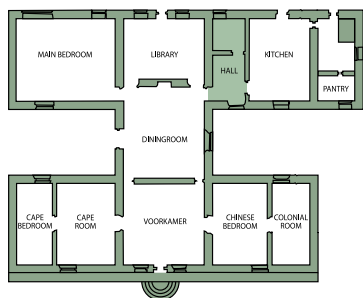
and a miscellaneous quantity of table linen (Qty)

R300 – 400



THE HALL





## THE HALL

84

### A Colonial hardwood armchair, 18th century

with carved pierced splat, saddle-shaped top rail, elaborately carved arm supports, drop-in leather seat, serpentine-shaped apron, on exaggerated carved cabriole legs headed by scrolls, the hoof feet joined by a shaped H-stretcher centred by a shell

R40 000 – 60 000

Accompanied by a letter from George Subkoff, past President of the Art and Antique Dealers League of America, New York, dated 24 January 2003, relating to this chair.

85

### A Dutch marquetry walnut and satinwood side table, 19th century

the rectangular top inlaid with a stylised bird enclosed by foliate motifs, the corners inlaid with heart-shaped motifs, above a pair of frieze drawers, on twist-turned legs joined by a shaped stretcher, with bun feet, 76cm high, 96cm wide, 60cm deep

R9 000 – 12 000



84



85



87



89

86

**A brass inkstand, modern**

the oval stand with two covered pots, the base inscribed 'MOTTAHEDEH', 13cm high; and another, late 19th century, rectangular, with carrying-handle, hinged pen and ink compartments, on tubular feet, 12cm high (2)

R400 – 600

87

**A rare Cape stinkwood Court Martial armchair, 19th century**

with curved backrail above a shaped crossbar, one armrest, riempie seat, on square-section legs joined by three-quarter box-stretchers

R18 000 – 20 000

Finch & Co, 2 Old Brompton Road, London, 18 March 2003

88

**A Colonial Indonesian brass and copper wall-mounted oil lamp, 19th century**

with detachable cylindrical covered box, the side applied with a spout, the frame moulded with lions' heads, tapering column on a shaped base, 37cm high

R 2 000 – 3 000

89

**A Dutch oak canal house hall seat, early 19th century**

the back pierced with latticework and carved with a shell flanked by stylised waves in high 'rococo style', scroll arm supports, solid seat, with foliate-carved apron, on bracket supports, 142cm long

R20 000 – 30 000

Wielke Fröhlich, Amsterdam, 5 January 2000

90

**A four-gallon copper measure dents, 46cm high**

R1 500 – 2 000

91

**Two Bermuda cedar Boer War prisoner of war walking sticks, 1902**

each carved with the inscription 'Bermuda POW 1902', with horse's hoof handles (2)

R9 000 – 12 000

Thistle Gallery, Bermuda, 23 May 2003





91



92



93



94

92

**A Bermuda cedar Boer War prisoner of war walking stick, 1902**

the handle carved with the inscription 'Made by HJ Botha, POW, 1902', the hoof-shaped terminal applied with a bone horseshoe; and another, similar, carved with 'D. Grobler POW 1902' (2)

**R8 000 – 10 000**

Thistle Gallery, Bermuda, 23 May 2003

93

**A Bermuda cedar Boer War prisoner of war walking stick, 1902–1903**

carved with the inscription 'J. Burger POW Bermuda 1902', the handle in the form of a dog's head; and another, carved with the inscription 'Bermuda POW 1903', the handle in the form of a hornbill (2)

**R12 000 – 16 000**

Thistle Gallery, Bermuda, 23 May 2003

94

**A horn and fruitwood walking stick** the shaft carved with a snake, *damaged, collar lacking*; and a shooting stick, Mills Munitions, Birmingham, model number 8098 (2)

**R2 000 – 3 000**

95

**Six African walking sticks**

variously carved (6)

**R1 000 – 1 500**

96

**A Dutch Land Tenure document issued by the VOC, dated 9 August 1732**

signed by Hendrik Swellengrebel, the first Cape born Governor of the Cape (1739-1751) and other council members of the Company, with the VOC seal, 32 by 41cm

**R4 000 – 6 000**

97

**A Melayer runner, West Persia, modern**

*condition: ends reduced, breaches, wear, faded, sides fraying, 323 by 104cm*

**R1 000 – 1 500**

98

**A Belouch prayer rug, East Persia, circa 1930**

*condition: corners damaged, faded, 148 by 91cm*

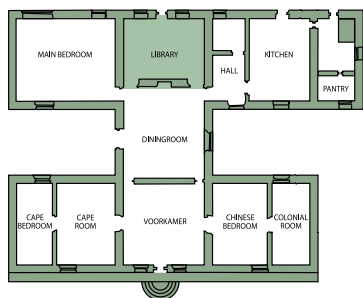
**R1 500 – 2 000**

99 - 108

**No Lots**



THE LIBRARY



## THE LIBRARY

109

### A Flemish Old Testament Biblical tapestry fragment, late 16th century

woven with female figures and camels  
within a landscape setting, within a  
*later* blue and cream banded outer  
selvedge, *restorations*, approximately  
102 by 64cm

R7 000 – 9 000

110

### Three Flemish tapestry fragments, 17th and 18th century

woven with fruit in shades of green  
and blue, each now a cushion cover,  
*repaired*, some *distress*, the largest 49 by  
31cm (3)

R4 000 – 6 000

109



111

### A Japanese Arita blue and white dish, 18th century

of *kraak* type, painted in underglaze-blue  
with a pair of geese before a river, the  
broad rim with radiating panels of stylised  
flowers, leaves and formal motifs, *chips to  
rim*, 36cm diameter; and another, similar,  
*riveted*, *chips*, 36,5cm diameter (2)

R6 000 – 8 000

112

### A Japanese blue and white double- gourd vase, 18th century

loosely decorated with foliage and the  
initials RW, *damaged*, 32cm high

R6 000 – 8 000

111



112



110 detail





113

**A Japanese Arita blue and white dish, late 17th century**  
the centre painted with a flower-filled vase within a rim of radiating panels of peonies, bamboo and blossom, *chip to rim*, 31cm diameter

R7 000 – 9 000



113



114

114

**A Japanese Arita blue and white VOC apothecary bottle, late 17th century**  
the globular body with tapering neck, painted in underglaze-blue with the VOC monogram within a laurel wreath, 24cm high, applied with a twine case

R30 000 – 40 000



115

115

**A Japanese Arita blue and white dish, late 17th century**  
circular with wavy rim, the centre painted with a stylised rocky outcrop, bamboo and prunus blossom, enclosed by a scroll and flowerhead border, *hairline cracks and rim chips*, 31cm diameter

R3 000 – 4 000



116

116

**A Chinese blue and white dish, 19th century**  
octagonal, the centre painted with a conforming cartouche of a small boy standing beside a pavilion enclosed by Buddhist emblems, ribbons and rondels, *repaired and riveted*, 52,5cm wide

R3 000 – 4 000



118

117

**A Japanese Arita blue and white dish, second half 17th century**

the centre painted with two *ho-o* birds, pomegranates and camelias, the border with alternating panels of bamboo and peonies, *paper label 'H.C. Swaque coll. in Ceylon, 1896-99; chip, hairline crack, 27cm diameter*

R6 000 – 8 000

118

**A Dutch Colonial satinwood and ebony brass-mounted kist, 18th century**

the rectangular top with brass bosses, the sides with pierced brass plates and handles, on *later* ball feet, 70cm high, 143cm wide, 61cm deep

R60 000 – 80 000

119

**Three brass spittoons, 18th and 19th century**

in sizes, *the tallest 38cm high* (3)

R12 000 – 15 000

120

**English School**

19TH CENTURY

*Portrait of a Lady feeding her Parrot*

oil on canvas

89 by 68,5cm

R5 000 – 7 000



119

121

**after Johannes VERMEER**

DUTCH 1632-1675

*Young Woman with a Water Pitcher*

oil on canvas

42 by 37cm

R1 500 – 2 500

122

**Gerald NORDEN**

BRITISH 1912-2000

*Grapes in a Basket; Dark Plums; Plums in a Paper Bag; Plums in a Saucer; Lemons in a Basket, five* all signed, dated 92, 94, 95 and 96 respectively

oil on board

the largest 20 by 20,5cm (5)

R15 000 – 20 000

EXHIBITED

Catto Gallery, London



120

123

**A Chinese blue and white flask, Qing Dynasty, 18th century**

the handle modelled with a dragon, *restorations and replacements, 26cm high; and three Chinese blue and white vases, early 19th century, all with extensive damage, the largest 30cm high* (4)

R600 – 800

124

**A Chinese Canton teapot and cover, Qing Dynasty, 18th century**

painted with figures at various pursuits, *chips to spout and cover, 15cm high; a Chinese Imari teapot and cover, 18th century, painted with fan-shaped panels of birds and prunus blossom, later metal spout, the cover with chip, 12cm high; four Chinese Imari plates, all with damage, 22,5cm diameter; and a Chinese Imari bowl, 18th century, similarly decorated, formerly with rivets, repaired and damaged, 10cm high* (7)

R1 200 – 1 500

125

**An Indian copper dish**

circular, moulded in relief with a hunting scene enclosed by a border of Islamic calligraphy, *25cm diameter*; and an Islamic brass and copper dish, moulded with a six-point star, with everted rim, *33cm diameter* (2)

R900 – 1200

126

**A Dutch Delft blue and white clock, modern**

battery operated, *37cm high*

R300 – 400



130



127

**A pair of Chinese blue and white vases and covers, 19th century**

the baluster bodies profusely decorated with lotus and scrollwork, the covers with *dog-of-fo* finials, *underglaze-blue four-character mark, repairs, 33cm high*; a Chinese 'Tobacco Leaf' pattern vase, 18th century, of baluster outline, *repaired, 25cm high*; and a Chinese Famille Rose trumpet-shaped vase, 18th century, painted with a panel of small boys playing with chickens, *rim with chips, 27cm high* (4)

R1 500 – 2 000

128

**A Chinese blue and gilt bowl, Qing Dynasty, 18th century**

glazed in powder blue with gilt highlights, *repaired, 11cm high*; and three Chinese Famille Rose bowls, Qing Dynasty, 18th century, each painted with sprays of peonies before a rocky outcrop, *rivets and repairs, the larger 10cm high* (4)

R500 – 700

129

**A Chinese Famille Rose bowl, Qianlong (1735–1795)**

the exterior decorated and enamelled with a band of courtiers and figures at various pursuits, the rim with a blue and gilt cell and diaper border, with apple-green glazed interior, *damaged, 6,5cm high*; and a Chinese Famille Verte bowl, Qing Dynasty, late 18th/early 19th century, the centre painted with a large green leaf enclosed by butterflies, insects and birds, the exterior with a pair of panels enamelled with peonies enclosed by a black ground highlighted with flowerheads and foliage, *rivets and repairs, 7,5cm high* (2)

R1 500 – 2 000

130

**A Chinese blue and white dish, Qianlong, 18th century**

octagonal, the centre painted with sprays of flowers within diaper, foliate and cell borders, *repaired and riveted, 42cm wide*; and another example, painted with a rocky outcrop issuing a spray of flowers and a willow tree before a balustrade, enclosed by borders of pomegranates and cell diaper bands, *repaired and riveted, 42cm wide* (2)

R3 000 – 4 000

131

**Two stinkwood gueridons, 19th century**

the smaller with a twist-turned tapering octagonal column, the taller with a twist-turned column, each on three bracket shaped legs, *the taller 120cm high*, and another example, *damaged, 137cm high* (3)

R1 500 – 2 000

132

**A pair of brass pricket candlesticks, 19th century**

each with hexagonal sconce, on a triangular base with paw feet, *repairs, 15,5cm high* (2)

R700 – 900

133

**An Anglo Indian rosewood and ebony brass-mounted fall-front bureau, 19th century**

the rectangular top above a hinged fall-front enclosing a fitted interior with secret compartments, small drawers and open compartments, above a pair of short and two long serpentine-shaped drawers, on a moulded base raised on bun feet, *112cm high, 80cm wide, 53cm deep*

R30 000 – 40 000



134

**A Sheffield plated inkstand, late 19th century**

rectangular, with acanthus-leaf handles and feet, with covered wafer box, blue glass inkwell and water pot, *24cm wide over handles*; and an electroplated circular salver, Walker & Hall, Sheffield, 20th century, the centre engraved with the initial R, with beaded border, on three bun feet, *30cm diameter* (2)

R700 – 900

135

**A brass bucket**

ovoid, the sides applied with ring handles, *dents, 28cm high, 31cm diameter*; a brass fireguard, modern, with handle, on bracket feet, *62cm high, 71cm wide*; a brass semi-circular fender, with pierced frame, *104cm wide, 20cm high*; and a brass fire brush in the form of a bear, with ring handle, *bristles reduced, 13cm high* (4)

R2 000 – 3 000

136

**A copper and brass coal scuttle**

in the shape of a conch-shell, with carrying-handle, on a circular foot, *dents, 35cm high*; an Edwardian fireplace bellows, the wood carcass with leather bellows, inlaid with a shell patera, *38cm long*; another two examples, modern; a copper example, *leather damaged*; and three steel fire-irons (8)

R2 000 – 3 000

137

**A beech and upholstered stool, early 20th century**

rectangular, with tapestry seat, on shell-carved cabriole legs with claw and ball feet, *36cm high, 105cm long*

R700 – 900



133

138

**A pair of two-seater upholstered sofas, modern**

variously upholstered, *170cm wide*; and an armchair, en suite (3)

R2 500 – 3 000

139

**Six earthenware hen egg baskets, modern**

variously decorated, *approximately 12cm high* (6)

R1 000 – 1 500

140

**A miscellaneous group of nine glass hen egg baskets**

including clear pressed-glass and milk glass examples, variously coloured and decorated, *approximately 12cm high* (9)

R1 000 – 1 500

141

**A miscellaneous collection of hen egg baskets and figures of chickens, modern**

including pottery, glass, cloth, wood and paper examples, *approximately 12cm high* (Qty)

R600 – 800

142

**A Meshed carpet, East Persia, modern**

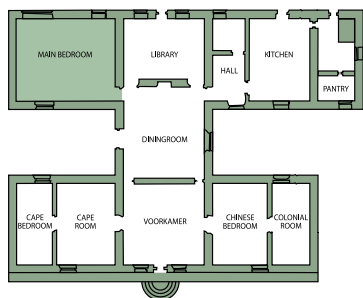
*condition: poor, patches of wear, sides worn and fraying, 404 by 317cm*

R2 000 – 3 000



THE MAIN BEDROOM





## THE MAIN BEDROOM

143

### A Westphalian rosewood

### schrank, late 18th century

the outset moulded cornice above a pair of cushion-panelled doors carved with panels of fruit and flowers enclosing two shelves and a long drawer, a long frieze drawer below with mask handles, with panelled sides, on massive bun feet, 215cm high, 204cm wide, 81cm deep

R50 000 – 70 000



143



144

**A pair of Chinese Famille Verte vases and covers, late 19th century**

baluster, painted in the Famille Verte palette with three shaped panels of figures at various pursuits, enclosed by a stippled-blue border, the covers with spire-shaped finials, similarly decorated, *underglaze-blue double-ring mark, one with extensive damage, 40cm high* (2)

R6 000 – 8 000

145

**A pair of Chinese Famille Rose dishes, Qing Dynasty, 18th century**

of barbed outline, the centre painted with a family beneath a tulip tree engaging with a bearded warrior, the cavetto with red and gilt diamond and chain border, the rim with sprays of flowers, *repairs, 38cm diameter* (2)

R1 000 – 1 500

146

**A Japanese Imari bowl, Meiji Period (1865-1912)**

the centre painted with a floral rondel enclosed by a brocade border interspersed with shaped panels of flowers, birds and diaper borders, gilt rim, the reverse enamelled with trees in blossom, *25,5cm diameter*; and a Japanese enamelled vase and cover, early 20th century, of baluster outline, enamelled and painted with maidens enjoying a meal, enclosed by a black ground highlighted with peonies, rocky outcrops and plantation leaves, *repaired, chipped, 31cm high* (2)

R600 – 800



144 part lot



145 part lot

147

**A George III needlework and painted silk panel, last quarter 18th century**

depicting three figures in an interior, *distressed, 29 by 23cm*

R300 – 400

148

**Barbara VALENTINE**

MODERN

A miniature painting,

*Frigate off Lisbon*

in the 18th century style  
*8cm by 11cm*

R200 – 400

149

**An American Honduran mahogany four-poster bedstead, South Carolina, late 18th/early 19th century**

composed of 18th century elements, the fluted baluster posts carved with ears of wheat, stiff-leaf and flowerhead decoration, on castors, the *later* canopy with dentil moulding, with panelled headboard, *restorations and additions, 220cm high, 210cm long, 170cm wide, with two single mattresses*

R20 000 – 30 000

150

**A Cape stinkwood peg-top side table, second half 18th century**

the rectangular two-plank moulded top above a wave-shaped apron with a frieze drawer, on cabriole legs with pad feet, *70cm high, 87cm wide, 58cm deep*

R60 000 – 80 000

LITERATURE

Deon Viljoen & Guus Röell, *Uit Verre Strekken*, Cape Town & Maastricht, 2003, number 5, illustrated



150



151

151

**A Cape stinkwood peg-top side table,  
18th century**

the rectangular moulded top above a shaped  
frieze incorporating a drawer, on cabriole legs  
and pad feet, 70cm high, 94cm wide, 57cm deep

R60 000 – 80 000

152

**A Cape stinkwood fall-front bureau,  
18th century**

the *later* rectangular top above a panelled  
fall-front enclosing an arrangement of drawers,  
shelves and a well, three linen-fold drawers  
below, on massive paw and ball feet, *formerly  
a bureau bookcase*, 112cm high, 118cm wide,  
57,5cm deep

R20 000 – 25 000

Herman Noy, Cape Town



152



153

153

**Dorothy Kay, 'Shepherd Boy', 1951**

the glazed earthenware figure draped in a blanket and holding his crook in his left hand, his face painted yellow, with large hoop earrings and wearing a blue headscarf, standing on an oval base inscribed with the title, the reverse signed and dated, 25cm high

**R9 000 – 12 000**

**LITERATURE**

Marjorie Reynolds, *Dorothy Kay, Everything You Do is a Portrait of Yourself*, Alec Marjorie Reynolds, Rosebank, 1989, pages 244 and 245, where a sketch of Shepherd Boy is illustrated. In a letter to America dated 1951, mention is made for the first time of

Kay's work in a new medium, work that was to engross her for the next three years. s  
 '...I've made two statues! Pottery woman sent me some clay as a kind of challenge because I said 'I'd love to do figures if I did pottery' - Got clay yesterday morning, & by lunch one was done! Pottery woman brought Joan home at tea time but wouldn't come in - said she'd come when I'd done a figure! so I said to Joan 'Its done!' Joan could'nt believe it & rang up Pottery woman who would'nt believe it either - & today I've done another - Two now, drying - for a couple of weeks - then they get fired - then I colour them & they're fired again - Such fun - I expect they're rotten as pottery goes - but I just had to try - I find it awfully easy!!! and clay is lovely to work with - so responsive - I just copy one of my drawings, front view - then put on the back & sides which follow easily! ...' At the end of her letter Dorothy sketches the 'two statues' referred to in the first paragraph.

154



154

**Dorothy Kay, 'White Cat', 1952**

an earthenware white-glazed model of a seated cat, with yellow eyes and a garland of flowers around its neck, the inside of the mould signed and dated in blue paint, 25cm high

**R10 000 – 15 000**

**LITERATURE**

Marjorie Reynolds, *Dorothy Kay, Everything You Do is a Portrait of Yourself*, Alec Marjorie Reynolds, Rosebank, 1989, page 250, where this cat is discussed: 'Two early ceramics were clamoured for by cat lovers. The first (1951), untitled but known as *Decorated Cat*, is an almost life-size chocolate brown cat....The second, *White Cat*, is similar in form, but in contrast it is in white glaze but for the pale colours of its garland and its yellow-green eyes with black slit pupils. Surprisingly, it is signed 'D Kay, 1952' as one would have guessed it to be the earlier of the two.'





155

155

**Dorothy Kay, 'William Shakespeare', 1953**

a glazed earthenware book-end bust of William Shakespeare, with books, scrolls and a quill below, the whole raised on a plinth base with inscription, *signed and dated 1953, 25cm high*

**R10 000 – 15 000**

**LITERATURE**

Marjorie Reynolds, *Dorothy Kay, Everything You Do is a Portrait of Yourself*, Alec Marjorie Reynolds, Rosebank, 1989, page 253, where this figure is discussed: 'Darlings all - Did a Shakespeare Statue today - & all the while I could hear Marda saying 'Oh I wouldn't have done him like that - He should be this ... or that..' & so I battled against odds! Its very dull really - but will make a book end - the other (end) still to be done, dont know what - all poets and writers look the same Swinburne, Bacon - Chaucer etc:

I thought of Lady Macbeth - or Othello -? & by the way in the Drinkwater old volumes on literature, there's a photograph of Forbes Robertson as Othello, looking very good - very pale in colour - well dressed - Just the job! Then I thought maybe an opposite end of a lute & pipes & scrolls & this & that - a still life - How's that - no more clay - used last ounce -had to keep hollowing it out to get last bits! like scraping all the best bits out of an egg!!! High forehead - done from an old print of him that is supposed to be the best likeness - I added the laurels for richness - & deserving!!'

143 detail



156

**A set of mahogany hanging shelves, 19th century**

with three graduated shelves above a pair of short drawers, 107cm high, 77cm wide, 25,5cm deep

R4 000 – 6 000

157

**A miscellaneous group of four Chinese Famille Rose teapots, Qing Dynasty, 18th century**

two with later covers, all damaged, the tallest 12cm high (4)

R300 – 400

158

**Three Chinese Export teapots, Qing Dynasty, 18th century**

all with later covers, variously decorated with birds, flowers and fruit, damaged, with later metal replacements, the tallest 13cm high; and two Chinese Famille Rose bowls, one painted with figures attending an oxen, the other with sprays of peonies, damaged (5)

R600 – 800

159

**Three Chinese Export teapots and a hot water pot, Qing Dynasty, 18th century**

variously painted, one with later covers, three lacking covers, extensive repairs and later metal fittings, the hot water pot 16cm high (4)

R300 – 400

160

**South African School**

20TH CENTURY

*Old Shop, Hanover Street; and To St Marks, Hanover Street, District Six, Cape Town, a pair*

signed indistinctly, inscribed with the titles and dated 78 ink and watercolour each 26 by 20,5cm (2)

R400 – 600

161

**P\*\* LAROCHE**

SOUTH AFRICAN 20TH CENTURY

*A Boat Moored on a River* signed and dated 1944 oil on board 22 by 40cm

R1 500 – 2 000

and South African School, 20th century, *Landscape*, oil on board, 35,5 by 50cm; and another, 22 by 30cm (3)

162

**Rudolf Helmut SAUTER**

BRITISH 1895-1977

*Table Bay, Cape Town* signed and dated 1927 oil on canvas 47 by 64,5cm

R10 000 – 15 000

Sold: Bonhams, London, 23 May 2007, lot 67



156



162

163

**Andrew HAUPT**

SOUTH AFRICAN 20TH CENTURY

*Landscape*

signed and dated 1976  
oil on board  
27 by 30cm

**R400 – 600**

and two other South African landscapes (3)

164

**South African School**

20TH CENTURY

*Street Scene, Cape*

oil on board  
30 by 45cm

**R800 – 1200**

and *Bo Kaap*, signed J Parson and  
indistinctly dated \*3, pastel, 25,5 by 32,5cm (2)

165

**A painted mirror, modern**

oval, with flowerhead and acanthus-leaf  
cresting, 75cm high

**R400 – 600**

166

**A Sitzendorf porcelain mirror, late  
19th century**

oval, the border encrusted with pink and  
yellow roses, bevelled mirror, *formerly with  
candlearms*, 30cm high

**R400 – 600**

167

**A pine metal-bound two-handled  
bucket**

cylindrical, 25cm high

**R300 – 500**

168

**A South African stinkwood and  
caned stool, 20th century**

the seat with two caned panels, on cabriole  
legs with ball and claw feet joined by an  
X-stretcher, 43cm high, 91cm long; another,  
with riempie seat, rectangular, on cabriole  
legs, 33cm high; and another example,  
square, with riempie seat (3)

**R1 200 – 1 500**

169

**A yellow linen upholstered  
armchair**

**R600 – 800**

170

**A stained deal toilet mirror, early  
20th century**

the arched frame suspended between  
moulded supports, on cabriole legs  
headed by shells, on pad feet, *damaged*,  
60cm high

**R400 – 600**

171

**A South African imbuia stool,  
20th century**

rectangular, with drop-in padded seat, on  
cabriole legs with claw and ball feet; and  
another, similar, with fixed seat (2)

**R600 – 800**

172

**A pair of oak towel rails,  
20th century**

77cm high (2)

**R500 – 700**

173

**A teak mirror, 20th century**  
the moulded rectangular frame with  
arched top, 140cm high, 41cm wide

**R200 – 300**

174

**A Tekke Turkoman rug,  
Turkmenistan, 1920**

*condition: patches of wear, sides with tears,  
ends reduced*, 198 by 130cm

**R800 – 1 200**

175

**A Tekke Turkoman rug,  
Turkmenistan, 1900**

*condition: faded, patches of wear, sides  
fraying ends reduced*, 188 by 122cm

**R600 – 900**

176

**A Karadja rug, North West Persia,  
1960**

*condition: sides fraying*, 135 by 110cm

**R600 – 900**

177

**A Hamadan runner, modern**

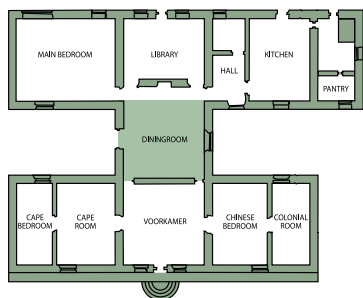
*condition: patches of wear, ends reduced,  
sides fraying, damage to one end*,  
260 by 77cm

**R800 – 1 200**





THE DINING ROOM



## THE DININGROOM

178

### A pair of Dutch Colonial coromandel armchairs, 18th century

each with pierced vase-shaped splat, arched top rail carved with foliage and flowerheads, curved arm supports, drop-in serpentine shaped caned seat, the front rail carved with an oval patera centred by a flowerhead, on shell-carved cabriole legs (2)

R70 000 – 90 000

#### PROVENANCE

Van der Ven & Van der Ven, Holland

179

### A Cape stinkwood and teak side table, 18th century

the rectangular top with rounded notched corners above a wave-shaped frieze, on cabriole legs with pad feet, 73cm high, 94cm wide, 70cm deep

R50 000 – 70 000



178



179



180

**A Boer War coromandel and satinwood box, Ceylon, April 1902**

the hinged rectangular top applied with a brass handle and carved with the inscription 'Gedachtenis Art. Ceylon. April 1902. Boeren Kamp, Diyatalawa. Zacharias Johannis Swanepoel', the front applied with a bone heart-shaped escutcheon plate, 9,5cm high, 22cm wide, 13cm deep

**R8 000 – 10 000**

**PROVENANCE**

Sold: Stephan Welz & Co, The Estate Late Koos Minnaar, Graaff-Reinet, 10 August 2005, lot 35

181

**A mahogany decanter box, 19th century**

with domed cover, the interior fitted with four gilded glass decanters and stoppers, the sides with carrying handles, on brass ball feet, *two stoppers replaced, lacking drinking glass, 26cm high, 19cm wide, 20cm deep*; and a walnut tea caddy, 19th century, with domed hinged cover, on three brass feet, *damaged, 11,5cm high (2)*

**R3 000 – 4 000**

182

**A mahogany and fruitwood wine-rest pourer**

rectangular, shaped sides with open niche, the side with a semicircular galleried tray, 31cm long, 10cm high

**R1 000 – 1 200**



180 detail



180



181



182



183

**A Dutch brass hanukah lamp,  
18th century**

the arched pierced back-plate with the Tree of Life surmounted by a crown flanked by flowerheads and bosses, with hinged sides, the front with rectangular tray, 31cm high, 30cm wide

R6 000 – 8 000

Rupert Gentle Antiques, Nr Pewsey,  
Wiltshire, 8 June 1999

184

**A Cape brass-mounted teak  
travelling Menorah lamp,  
19th century**

the front applied with a pierced foliate frieze, the top with nine candle apertures, a silver filigree Shamsash and an associated brass ball, on bracket feet, 38cm long

R1 500 – 2 000

185

**European School**

19TH CENTURY

*The Violinist*

signed with the initials IB  
oil on canvas  
20 by 15,5cm

R1 000 – 1 500

another of *A Gentleman proposing a Toast*;  
and a print of a Dutch interior (3)

186

**A Dutch oak hanging display  
cabinet, early 20th century**

with arched cornice, conforming glazed  
door and sides, enclosing two shelves,  
68cm high, 68cm wide, 16cm deep

R2 000 – 2 500



185



185



186



193

194



195

187

**A Chinese Export miniature Famille-rose teapot and cover, Qing Dynasty, 18th century**

the bulbous body painted with maidens, gilt highlights, rivets, 11cm high; and three further examples, all with associated covers, repairs, damage (4)

R600 – 800

188

**A Chinese Famille-rose teabowl and saucer, Qing Dynasty, 18th century**

painted with sprays of chrysanthemums, the interior with red and gilt spearhead border; a Chinese Blanc de Chine saucer dish, 18th century, of lobed outline, the interior moulded in relief with leaves, some loss, 13cm wide; a white-glazed hexagonal teabowl, stained; and an earthenware figure of Buddha, modern, 10cm high (5)

R500 – 700

189

**A pair of Chinese Famille-rose helmet-shaped jugs, Qing Dynasty, 18th century**

modelled after a George II silver example, painted with a fisherman beneath a willow tree, on a spreading circular foot painted with sprays of flowers, extensive damage, 15cm high; and two further examples, one painted with a cartouche of figures, extensive damage, 14cm high (4)

R900 – 1200

190

**A brass candle-holder with box, late 19th century**

circular, the detachable cover with sconce, the side set with tapering handle, 9cm high, 21,5cm long; two brass chambersticks, some damage and dents; and a brass pan chamber stick, possibly Dutch, 19th century (4)

R1 500 – 2 000

191

**A pair of brass candlesticks**

each with turned sconce on a tapering octagonal column, on a moulded octagonal foot, 17,5cm high (2)

R900 – 1200

192

**A yellowwood and stinkwood gueridon, 19th century**

with twist-turned tapering hexagonal column, on three bracket legs, 149cm high, and a stinkwood example, 142cm high (2)

R1 000 – 1 500

193

**A Dutch colonial brass pricket candlestick, 18th century**

the ring-turned column with mid drip-pan, raised on a circular foot, 30cm high

R6 000 – 8 000



196

194

**A large Dutch brass candlestick,  
19th century**

with ring-turned column and detachable  
drip-pan, on a moulded domed base,  
41cm high

**R4 000 – 6 000**

195

**A Dutch Colonial teak, rosewood  
and ebony brass-mounted chest,  
18th century**

with rectangular hinged top, the sides  
applied with large brass carrying-handles  
and a pierced plate, the front with pierced  
escutcheon plates and four bosses, on  
massive ring-turned bun feet, *some distress*,  
82cm high, 150cm wide, 65cm deep

**R40 000 – 60 000**

Bearne's of Torquay & Aldersons, Bath,  
November 1992



197

196

**A Japanese Arita blue and  
white dish, 18th century**

the centre painted with a vase of  
peonies and bamboo, the rim with  
radiating panels of flowering *kiku*,  
pomegranates and peonies, 48cm  
diameter

**R15 000 – 20 000**

Michael E Bound, Gallery 287,  
Westbourne Grove, London,  
1 August 1998

197

**A set of six Dutch Colonial  
coromandel dining chairs,  
late 18th century**

each with pierced vase-shaped splat  
with shell cresting, serpentine caned  
seat, on leaf-carved cabriole legs joined  
by shaped stretchers (6)

**R60 000 – 80 000**

Manuel Castilho, 53 Ledbury Road,  
London, W11 2AA, 10 May 1996





198

198

**Dutch School**

17TH CENTURY

*Double portrait of a gentleman with his wife*

signed with the initials DB, possibly the monogramist DB (active 1656-57) who is documented as a portrait painter  
oil on panel  
124 by 174cm

**R100 000 – 150 000**

Eurasia Antiques, Amsterdam,  
15 November 1994

199

**An Indonesian teak dining table**

the panelled top with reeded edge above a plain frieze, on ring-turned baluster legs, 77cm high, 92cm long, 100cm wide

**R6 000 – 8 000**

200

**A Wedgwood creamware part dinner service, 18th and 19th century**

with brown line rims, comprising: 6 oval platters, in sizes, *the largest 52cm wide*; 7 circular serving platters, in sizes, *the largest 42cm diameter*; 8 soup plates; 6 fish plates; 3 sauceboats and stands; 2 diamond-shaped dishes; 1 salad crescent; 1 oval platter with pierced rim; 15 meat plates; 3 oval vegetable dishes and 2 covers; and 2 large circular dishes, with strainers, *44cm diameter*; and an *associated* oval tureen and cover, a four-part vegetable dish and 5 covers, in sizes, *chips, cracks, repairs throughout* (Qty)

**R6 000 – 8 000**

Sinclair's Antiques, Knysna, 1992

201

**An important Cape stinkwood Bible desk, late 18th century**

the hinged slant top enclosing a shelf flanked by three small drawers, the front with two engraved silver escutcheon plates, the stand with a frieze drawer above a moulded shaped apron, on moulded cabriole legs, *100cm high, 102cm wide, 70cm deep*

**R150 000 – 200 000**

**PROVENANCE**

The Herbert Prins Collection  
Sold: Stephan Welz & Co, Cape Town,  
21 October 1997, lot 74



201

202

**A 'Kraak-porcelain' blue and white dish, 17th century**

the centre painted with Precious Objects within an octagonal panel, enclosed by a border of stylised peonies and Buddhist symbols, the reverse loosely painted with panels, *repaired, fritting chips, 37cm diameter*

**R3 000 – 4 000**



202



203

203

**A 'Kraak-porcelain' blue and white dish, 17th century**

the centre painted with a bird before a rocky outcrop beneath flowering peony, enclosed by a cell diaper border, the rim with alternating panels of flowers and leaves, *repairs, 37cm diameter*

**R2 000 – 3 000**

204

**Follower of Sir Godfrey KNELLER**

1646-1723

*Portrait of a Gentleman*

oil on canvas

59 by 47,5cm

**R4 000 – 6 000**



204

205

**A brass lantern, 19th century**

the backplate moulded with a star flanked by c-scrolls, glazed sides and door, with strap handle, on four pad feet, *24cm high*; and a pair of brass candlesticks, 19th century, each with ejector, the baluster body on a spreading square foot, *14,5cm high* (3)

**R 2 000 – 2 500**



206 part lot

206

**A pair of Dutch brass three-branch wall lights, mid 19th century**

each with dolphin-head scroll arms, detachable sconces and drip-pans, *57cm high* (2)

**R10 000 – 15 000**

Challis House, San Francisco



207

**A Ceylonese satinwood  
'Burgomaster' chair, 1700-  
1720**

the curved back with three oval caned panels, caned seat, on six legs joined by stretchers

**R80 000 – 100 000**

Round chairs of this form were manufactured in the Indian sub-continent and the East Indies from the seventeenth century onwards and were extensively copied in the nineteenth century. The exact origin of the round chair is not known. Unlike other seat furniture made for European consumption in the Indies, the round chair has no obvious European prototype. Veenendaal is of the opinion that the round chair with six legs and with little or no decoration, was based on Indian thrones as described in the *Manasara*, a traditional manual on Hindu architecture. The term 'burgomaster' currently used to describe these chairs is, according to Jaffer, of nineteenth-century origin. In contemporary inventories from the Dutch East Indies and British India, chairs of this design are simply called 'round chairs' and are listed both as single objects as well as in pairs and sets of four and six, indicating that they served no particular hierachic function (Jaffer,



207

2001, p. 195). Support for this view is found in an illustration of women enjoying tea in a Batavian reception room, seated on 'burgomaster' chairs in a 1780 illustration by Jan Brandes (Eliens, 2002, plate 30, p.41). The plain unadorned round chair of the late seventeenth century/early eighteenth century was superseded in the second half of the century by chairs with carved and pierced decoration in rococo taste. Judging from the many examples of round or 'burgomaster' chairs, dating from the third quarter of the eighteenth century, the round chair enjoyed enormous popularity both in Indonesia and in Ceylon. They were also popular with the English in India and, after the Dutch were expelled from Ceylon by the British in 1795, round chairs continued to be made there and in Eastern and Southern India into the nineteenth century.

**PROVENANCE**

Deon Viljoen Fine Art, Newlands, Cape Town  
Guus Roell & Deon Viljoen, *Uit verre streken. The European contact with India, Indonesia, China, Japan and the Cape of Good Hope. 17th-20th Centuries.* Cape Town and Maastricht, June 2010.

**LITERATURE**

*The William Fehr Collection, Treasures at the Castle of Good Hope*, Cape Town, 1973, page 47, plate no 43, where a similar example is illustrated.

cf. Deon Viljoen, Monique van de Geijn-Verhoeven and others, *Domestic Interiors at the Cape and in Batavia 1602-1795*, Waanders Uitgevers, Zwolle/Gemeentemuseum Den Haag, 2002, pages 56 & 57



208

208

**A Ceylonese teak and Satinwood  
'Burgomaster' chair, early 19th  
century**

the curved back with three pierced and  
carved oval panels, caned seat, on six leaf-  
carved cabriole legs with paw feet joined by  
bobbin-turned stretchers

**R60 000 – 80 000**





211



212

209

**Two stinkwood gueridons,  
19th century**

one with twist-turned and hexagonal column, the other with twist-turned and tapering column, on three bracket-shaped legs, the taller 90cm high (2)

R1 500 – 2 000

210

**A pair of brass candlesticks,  
19th century**

each with circular domed base, 13cm high (2)

R900 – 1 200

211

**A Chinese blue and white dish,  
18th century**

the centre painted with a rocky outcrop issuing peonies enclosed by panels of flowers, wavy rim, *underglaze-blue double-ring mark, repairs*, 35cm diameter; another, the centre painted with a vase of flowers and Buddhist emblems enclosed by a loosely painted floral border, *damaged*, 28cm diameter; and another, the centre painted with a floral medallion enclosed by a lappet and floral band, the border with scroll and flowerhead decoration, *repairs*, 26,5cm diameter (3)

R800 – 1 000

212

**A Japanese Arita blue and white  
dish, 17th century**

the centre painted with a figure and two stylised cows crossing a bridge between rocky outcrops before a lakeside landscape, enclosed by alternating shaped panels painted with figures and stylised flowers, *damaged*, 26,5cm diameter; and a 'Kraak-porcelain' dish the centre painted with a bird perched on a rocky outcrop flanked by peonies and chrysanthemums, enclosed by alternating panels of flowers and Precious Objects, *pseudo six-character mark, damaged, rivets*, 21,5cm diameter (2)

R1 500 – 2 000



213

**A Chinese blue and white dish,  
Kangxi (1662-1722)**

the centre painted with a maiden and her attendant carrying a parasol before a rocky outcrop enclosed by moulded diaper borders, *fritting chips and hairline cracks, 22,5cm diameter*; a Chinese blue and white saucer dish, Kangxi, the centre painted with two maidens before a balustrade enclosed by a foliate panelled border, *hairline crack, chips, 16cm diameter*; another, 18th century, the centre painted with a rondel of fish enclosing a crab within foliate diaper borders, *underglaze-blue four-character mark, rim repaired, 13,5cm diameter*; and a miniature dish, 18th century, the centre painted with a maiden and a small child, *damaged, 10,5cm diameter* (4)

R900 – 1200

214

**A miscellaneous group of  
Chinese blue and white porcelain,  
Qing Dynasty, 18th century**

comprising: two dishes and three plates, *all with damage, the dishes 22cm diameter* (5)

R500 – 600

215

**A Chinese blue and white dish, Qing  
Dynasty, 18th century**

the centre painted with musicians in a landscape, enclosed by cell diaper borders interspersed with figures at various pursuits, *repairs, 31,5cm diameter*; another, the centre painted with a panel of a landscape enclosed by flowers and similarly decorated borders. *repairs, 31,5cm diameter*; and an oval example, painted with figures in combat observed by a gentleman on a parapet with two attendants, with raised rim painted with bamboo, *hairline cracks, repairs, 26cm long* (3)

R1 000 – 1500

216

**A VOC brass weight, 1791**

of bell form, engraved with the VOC monogram, VI and the date, *13cm high*

R9 000 – 12 000

217

**A Dutch brass tobacco box,  
late 18th century**

rectangular with canted corners, the hinged cover punched with three flowerheads between wavy borders, *17,5cm long*

R4 000 – 6 000

Rupert Gentle, The Manor House,  
Milton Lilbourne, Nr. Pewsey, Wiltshire,  
5 November 2000

218

**A Dutch East Indian brass betel  
nut box, circa 1820**

oval, the hinged cover applied with a carrying-handle, lappet strapwork and lock, the interior with hinged compartment, *21,5cm long*

R5 000 – 7 000

Rupert Gentle Antiques, Nr Pewsey,  
Wiltshire, 15 June 1999

219

**A pair of brass travelling  
candlesticks, 19th century**

each with detachable sconce and circular drip-pan, *5,5cm high* (2)

R1 500 – 2 000



216



217



218

220

**A miscellaneous group of four Chinese blue and white tea bowls, Qing Dynasty, 18th century**

each decorated with flowers, *chips*; a Chinese Imari tea bowl, 18th century, *chips*; three Chinese blue and white coffee cups, late 18th century, decorated with flowers and figures, *chips*; a Chinese blue and white eye-bath decorated with bands of stylised flowers, *hairline crack*; and a Chinese blue and white saucer dish, *damaged* (10)

R600 – 800

221

**A Kirman carpet, Persia, modern**

*condition: sides fraying, patches of wear, fringes reduced, 218 by 124cm*

R600 – 900

222

**A Qum rug, Persia, modern**

*condition: faded, 108 by 76cm*

R1 200 – 1 600

223

**A Serab carpet, North West Persia, circa 1900**

*condition: faded, holes, worn, breaches, sides fraying, 536 by 336cm*

R2 000 – 3 000

224

**A Kurdi Khellim, West Persia, 1960**

*condition: faded, 315 by 121cm*

R1 500 – 2 000

225

**Five Indian crewelwork cushions, 20th century**

*38cm square*; and a petit point tapestry cushion stitched with pink and white carnations against a yellow ground, *32 by 37cm* (6)

R600 – 800

