



1

1
Set of six French silver and paste buttons, circa 1905

each pierced and designed as flowerheads centring pink and white collet-set circular stones, *stamped French assay mark, maker's stamp*, fitted case with retailer, A Rister and Carre, 16 Faubourg St Honoré 16, Paris (6)

R3 000 – 4 000



2

2
Two pairs of amethyst and silver-gilt ear clips

in sizes, each collet-set to the centre with an oval-cut amethyst enclosed by petals and stylised flowerheads within a rope-work frame (4)

R1 500 – 2 000



3

3

Shell cameo brooch, circa 1890

the oval-shaped plaque carved to depict the dextral profile of Demeter, her hair dressed with wheat, collet-set to a frame applied with seed-pearls, ball and rope-work decoration

R2 000 – 3 000



4

4

Victorian gold necklace, late 19th century

composed of double rod and spherical hollow links with beaded terminals, *length approximately 50cm, repairs, later 9ct gold bolt-ring clasp, 50g*

R15 000 – 20 000



5

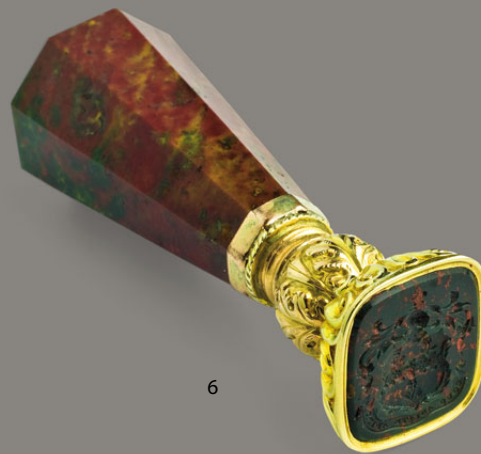
5
Gold and citrine necklace

designed as a graduated row of oval citrines mounted in collets, the centre suspended with a pear-shaped stone, *length approximately 46cm*

R15 000 – 20 000

Sold

Sotheby's, Jewels, Antique, Period and Contemporary, London, 16 December 2004, Lot 70



6

6
Gilt-metal mounted agate seal
the faceted mottled stone set to a gilt-metal leaf and scroll mount, the inset intaglio engraved with a crest, *7,5cm high*

R2 000 – 3 000



7

7
Victorian aquamarine and seed pearl pendant earrings
each articulated pendant millegrain-set with an aquamarine bordered by seed pearls, connecting to a ribbon-shaped surmount similarly set with seed pearls, *screw fittings, a seed pearl deficient (2)*

R2 000 – 3 000



8

8
**A gilt metal hair ornament,
circa 1900**

semi-circular, centred by a rose and flanked
by sprays of foliage and flowerheads,
approximately 11cm wide

R2 500 – 3 000



9

9
Two hair combs, circa 1900

one applied with a gilt-metal surmount of
oval-shaped amethysts and seed pearls, to a
two-pronged tortoiseshell comb; the other
with a silver surmount of open work ball and
leaf design, to a three-pronged tortoiseshell
comb, *minute chip to one prong (2)*

R4 000 – 5 000

10

Enamel, pink topaz, sapphire and diamond pendant, by Carlo Giuliano, 1874-1895

set to the centre with a cushion-cut pink topaz enclosed by a blue and white enamel border, within an open work enamel frame of stylised leaf and half flowerheads, further embellished with four collet-set sapphires, old-cut and rose-cut diamonds, terminating with a drop-shaped pearl, enamel bail, seed-pearl and trace-link chain, *with applied maker's plaque C.G. for Carlo Giuliano, in original red and gilt-tooled leather case, stamped C&A. GIULIANO, 115 PICCADILLY, LONDON*

Pearl not tested and unwarranted as such

R60 000 – 80 000

In 1874, Carlo Giuliano opened premises at 115 Piccadilly, London. In 1912 the firm moved to 48 Knightsbridge and closed in 1914.

Carlo Giuliano was inspired by Renaissance jewels. They stimulated his ideas and were only rarely models for exact replicas. Working on Renaissance principles of design, and improving their techniques he translated a past style into his own highly individual (and wearable) jewels, concentrating on neck ornaments, pendants and necklaces. He used delicate, open gold scroll-work, enamels and stones chosen for their colour, such as peridots, pink sapphires, brown zircons, baroque pearls and occasional sprinklings of rose diamonds.

He was a complete master of the art of enamelling, using various techniques of *ronde bosse*, *champlevé*, and *cloissoné*, in exquisite colour combinations or the startling contrast of black and white. His designs appeared to be traditional but he cleverly chose to express his own adventurous ideas within a refined, tasteful and acceptable framework.

Vivienne Becker, *Antique & Twentieth Century Jewellery: A Guide for Collectors*, Published by Robert Hale, 1977, p 184





11

**Diamond, emerald and ruby
brooch/pendant, circa 1890**

designed as a beetle, the shoulders mounted with a collet-set old miner-cut diamond weighing approximately 1.85 carats flanked by two collet-set old-cut brown diamonds weighing approximately 1.50 carats, the body embellished with alternating rows of cushion-cut emeralds and old- and rose-cut diamonds, the eyes set with cabochon rubies, *length approximately 5,5cm, suspension loop fitting, later brooch pin fitting*

R100 000 – 120 000



12

12

Diamond brooch, circa 1910

the open-work navette-shaped plaque millegrain-set throughout with old, rose-cut and eight-cut diamonds, *adapted*

R4 000 – 6 000



13

13

Pair of diamond and pearl ear pendants, early 20th century

each suspending a pearl drop, set to a surmount with a line of millegrain-collet and claw set old-cut diamonds, *screw fittings*, fitted case, Carrington and Company Limited, 130 Regent Street W.

Pearls not tested and unwarranted as such

R20 000 – 30 000



14

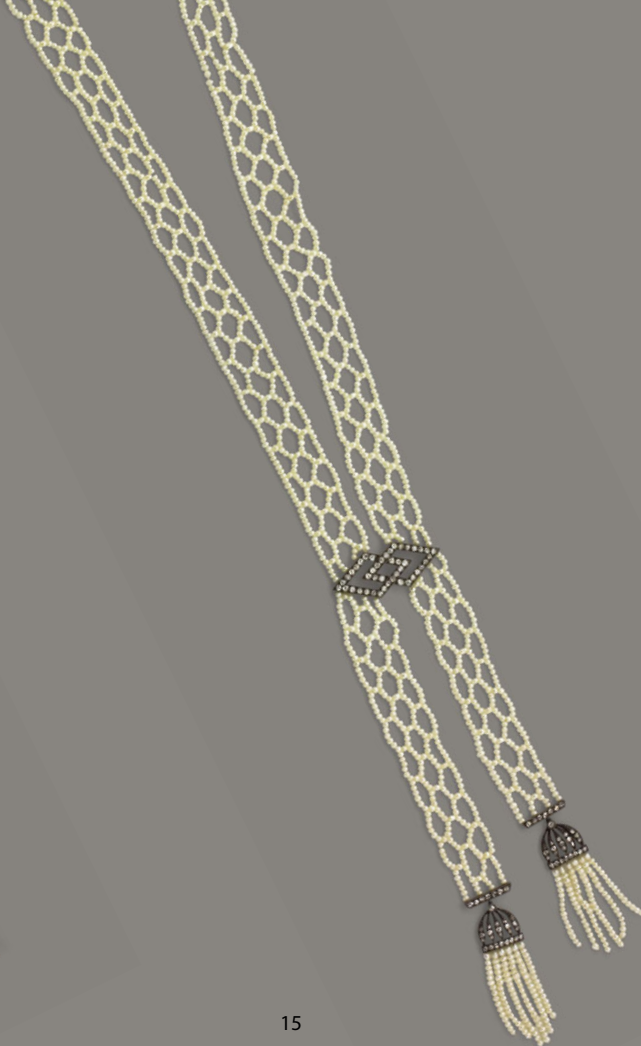
14

Seed pearl, diamond and black enamel sautoire, early 20th century

suspending a black enamel and diamond pendant, millegrain-set with rose-cut diamonds terminating in an eleven-row pearl tassel, to a length of woven seed pearls, *length approximately 86cm*

Pearls not tested

R10 000 – 15 000



15

15

Seed pearl and diamond sautoire, early 20th century

designed as two lengths of woven seed pearls united by a geometric open work spacer millegrain-set with rose-cut diamonds, each length terminating in a diamond embellished dome-shaped cap suspending a six-row pearl tassel, with bar clasp, *length approximately 42cm*

Pearls not tested

R20 000 – 30 000



16

16

Diamond and platinum ring

set with a brilliant-cut diamond weighing 2.265 carats between shoulders inset with baguette stones, size P¹/₂

R215 000 – 220 000

Accompanied by a report no. 427777 from The Jewellery Council of South Africa, stating the diamond weighing 2.265 carats is EW (E) colour and VS₁ clarity



17

17

Diamond and pearl brooch, circa 1925

of open work buckle design set with three cushion-shaped old-cut diamonds enclosed by old-cut and eight-cut diamonds weighing approximately 6.50 carats, the shoulders highlighted with pearls, mounted in platinum, French assay marks

Pearls not tested and unwarranted as such

R200 000 – 300 000



18

18

Diamond and sapphire watch case, 1920s
rectangular, within a frame millegrain-set with two calibré-cut sapphires flanking an old-cut central stone, articulated shoulders bordered by baguette, old-cut and eight-cut diamonds, on a *later* silver box-link bracelet, *approximate length 18cm*

R7 000 – 9 000



19

19

Diamond and tourmaline brooch, 1930s
pierced shield-shaped plaque centring a square-cut tourmaline, millegrain-set throughout with old-cut and a pear-shaped diamond, *adapted*

R12 000 – 15 000



20



21



22

20

Ruby and diamond ring

set to the centre with an oval ruby weighing approximately 1.40 carats between shoulders set with two old-cut diamonds, *size L¹/₂*

R9 000 – 12 000

21

Amethyst and pearl brooch/pendant

centring a collet-set emerald-cut amethyst bordered by pearls, *detachable brooch fitting*

R2 000 – 3 000

22

Ruby and diamond dress ring, Harry Winston

set to the centre with a cushion-shaped ruby weighing approximately 30 carats, within a surround of brilliant-cut and marquise-cut diamonds, *size P¹/₂, Swiss maker's mark and numbered*

R60 000 – 80 000



23

23

Diamond pendant

claw-set with a heart-shaped diamond weighing approximately .80 carats, set to a chain interspersed with ten collet-set brilliant-cut stones, *length approximately 38cm*

R15 000 – 20 000

Accompanied by a report no. 101009339/509767 from the E.G. Laboratory, South Africa, stating that the diamond weighing 0.8040 carats is colour H and SI2 clarity



24

24

Pair of diamond earrings

claw-set with a brilliant-cut diamond, each weighing approximately 1.80 carats respectively, bordered by a detachable collar, pavé-set with a line of brilliant-cut diamonds, *post and butterfly fittings (2)*

R90 000 – 100 000

Property of a Lady

25

Diamond and pearl brooch designed as a flowerhead, set to the centre with a pearl bordered by old-cut diamonds and eight pearls, each diamond-set petal embellished by a pearl, terminating in triangular-shaped leaves with three pearls, suspending a pearl drop, *Cartier-London, signature on back clip fastening*

Pearls not tested and as such unwarranted

R70 000 – 80 000

PROVENANCE

Countess of Kenmare
This brooch was designed by Roderick Cameron, Lady Kenmare's oldest son. It is partially composed of tie pins that belonged to Lady Kenmare's late husbands. Rory Cameron, a trend-setting aesthete, was the author of several books and a stylist, decorator and landscape gardener of note, principally famous for his transformation of La Fiorentina, St Jean Cap Ferrat, into one of the jewels of the French Riviera.

The jewellery belonging to the Hon. Patricia Cavendish and her late mother Enid Lady Kenmare is evocative of the extraordinary lives lived across many continents by these beautiful and much admired women. Their stories are recounted in Pat Cavendish O'Neill's *A Lion in the Bedroom*.

Enid Lindeman of the Australian wine-making family was a famous beauty. At twenty-one she married the shipping magnate Roderick Cameron, twenty-four years her senior. Legend has it that when Enid emerged from the Cameron Building in Manhattan the traffic would come to a halt "the better to view this vision of perfection". Cameron died a year later of cancer in 1914, leaving Enid a young widow, with a fortune of several million pounds and a nine-month-old baby, Rory. In 1917 she married Brigadier-General Frederick 'Caviar' Cavendish, father of Patricia and Caryll. Following his death in 1931 she married the fabulously wealthy Marmaduke Furness, 1st Viscount Furness and later Valentine Castlerosse, 6th Earl of Kenmare. The 40s and 50s were spent largely at the magnificent villa La Fiorentina, overlooking the Mediterranean at St Jean Cap Ferrat. Acquired by Viscount Furness for his beautiful wife in 1939, the villa was transformed by her son Rory into a glorious home, and was visited by the rich and famous, including royalty, film stars, and the *beau monde*.

Patricia married Australian champion swimmer Frank O'Neill and later the Comte Aymon de Roussy de Sales. She and Enid joined brother Caryll and family in Kenya, where they farmed, built game lodges, bred race horses and were devoted to their beloved animals that included Pat's magnificent lioness, Tana.

Lady Kenmare acquired Broadlands Stud Farm near Somerset West in the Cape where she spent the last years of her life, and where Pat still resides. Lady Kenmare excelled at everything she did and was adored by her family and friends. She lived by the maxim "Never be ill, never be afraid, and never be jealous".



Lady Kenmare with her trainer, Jan Thrane, photographed accepting the cup for the East African Derby. Lady Kenmare is wearing her pearl and diamond brooch.

LITERATURE

A Lion in the Bedroom, Pat Cavendish O'Neill, published jointly by Park Street Press and Media 21 Publishing, 2004, p 539



25

Countess of Kenmare





28



26



27

26

White stone ring

claw-set with a pear-shaped synthetic spinel, weighing approximately 13 carats, the shoulders part-set with four lines of old-cut diamonds, *size O¹/₂*

R6 000 – 8 000

PROVENANCE

Lady Kenmare. This ring is a copy of a diamond owned by Lady Kenmare and thence by descent to her daughter, The Hon. Patricia Cavendish O'Neill

27

Diamond ring

of bombé open work design, set with graduated lines of old-cut and brilliant-cut diamonds, *size O¹/₂*, *the shank engraved with the number 30009*

R15 000 – 20 000

By family tradition, this ring was bought at Cartier, Nice, by Enid Countess of Kenmare, for her daughter Patricia on the occasion of her engagement to Frank O'Neill, in 1948.

cf. Sotheby's, London, *Antique and Contemporary Jewels*, 13 June 2007, Lot 216, where a similar ring, made by Cartier in 1995, was sold.

PROVENANCE

The Hon. Patricia Cavendish O'Neill

28

Single-row cultured pearl necklace

comprising sixty-three graduated cultured pearls measuring 3,5mm-7mm, to a clasp set with a rectangular emerald-cut sapphire, *approximately 40cm long*

R3 000 – 4 000

PROVENANCE

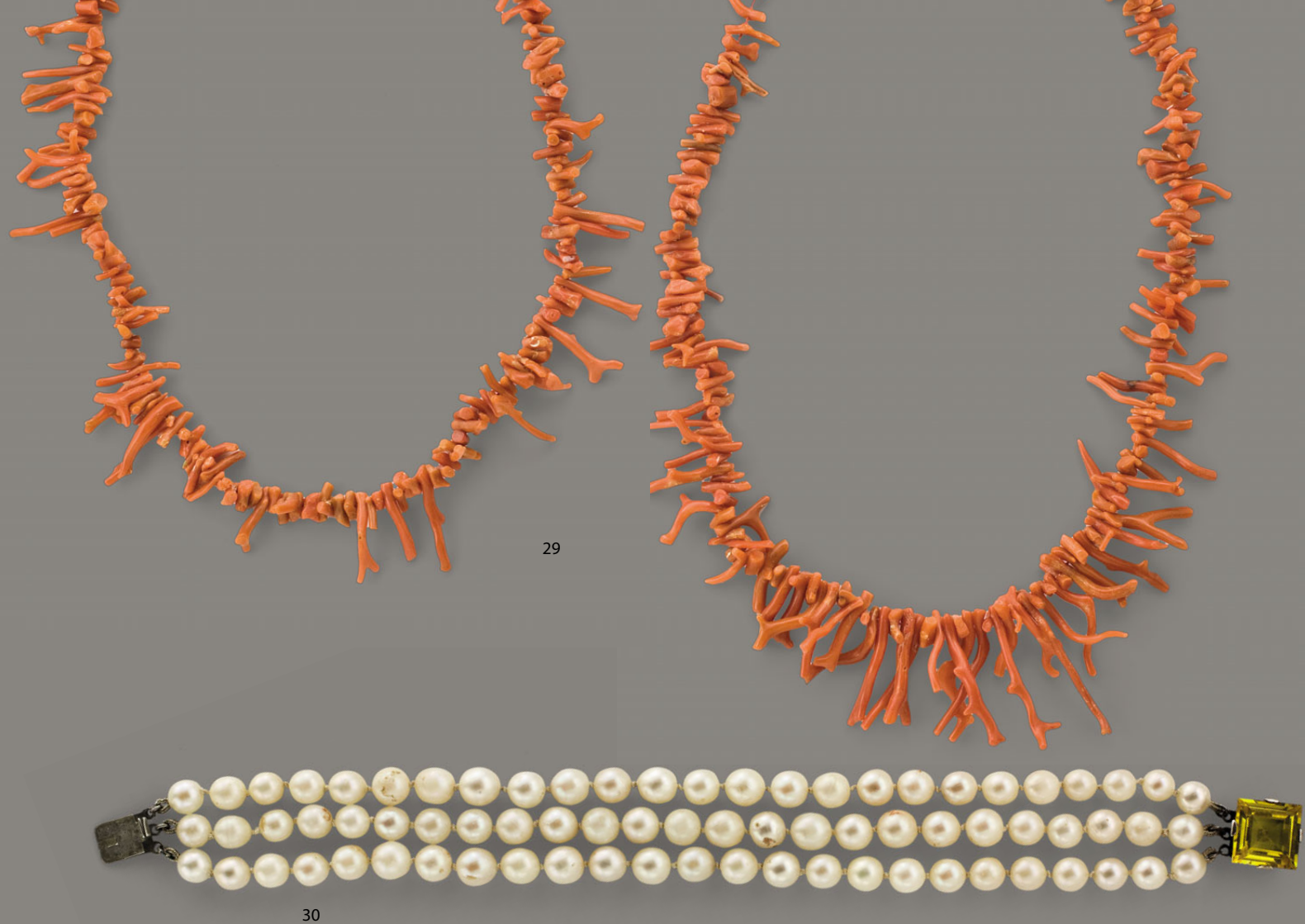
The Hon. Patricia Cavendish O'Neill



The Honorable Patricia Cavendish O'Neill
photograph by Anthony Armstrong Jones

LITERATURE

A Lion in the Bedroom, Pat Cavendish O'Neill,
published jointly by Park Street Press and
Media 21 Publishing, 2004, p 209



29

**Two strands of coral, Australia,
Great Barrier Reef**

the longest 49cm (2)

R1 500 – 2 000

PROVENANCE

The Hon. Patricia Cavendish O'Neill

Potential bidders who intend to export this lot are advised that permits may be required for import to certain countries. If you are interested in this lot, please contact Strauss & Co before bidding

30

Cultured pearl bracelet

designed as three rows of cultured pearls measuring 6,5mm-7mm, to a silver and yellow-stone clasp, *length approximately 19cm*

R2 000 – 3 000

PROVENANCE

The Hon. Patricia Cavendish O'Neill



31

Various Properties

31

Gold, diamond and emerald compact, circa 1950

designed as a semi-circle headed with a stylised bow embellished to the centre with eight-cut diamonds, with mirror interior, to a clasp set with a cabochon emerald, the interior with inscription, *measurements approximately 9cm x 10cm, approximately 260g*

R35 000 – 40 000



32

32

Roy King Gold lady's bracelet watch, 1971

nickel lever movement, 17 jewels, with oval blue enamel dial, dauphine hands, 18k gold bark finished bezel and bracelet of interlaced oval-shaped connecting rings, *case, dial, movement and bracelet signed, approximate length 17cm, maker's initials, assay and date marks*

R35 000 – 40 000



33



34



35



33

Diamond ring

of cluster design, set to the centre with a claw-set brilliant-cut diamond weighing 2.63 carats, highlighted with twelve brilliant-cut diamonds weighing approximately 2.15 carats, size $O\frac{1}{2}$

R50 000 – 60 000

34

Diamond and gold brooch, 1960s

of stylised spray design set with old-cut and eight-cut diamonds, *length approximately 6,5cm*

R20 000 – 25 000

35

Pair of diamond and gold earclips and a brooch, 1960s

each designed as a stylised leaf spray, set with eight-cut diamonds, *clip fittings (3)*

R12 000 – 15 000



36

Coral and gold necklace, Van Cleef and Arpels 1970s

designed as entwined large rope-work curb links, which are detachable to be worn as shorter necklaces and bracelets, necklace lengths, approximately 77cm, 57cm or 38,5cm; bracelets approximately 19cm each, signed VCA, France, numbered 6289.6, French assay marks; and a pair of coral, diamond and gold ear clips, the ribbed pear-shaped coral embellished with brilliant-cut diamonds and gold leaves, stamped Bte SJDG, numbered 2288, France, clip fittings (3)

R50 000 – 70 000

Potential bidders who intend to export this lot are advised that permits may be required for import in certain countries. If you are interested in this lot, please contact Strauss & Co before bidding.



37

Coin and diamond necklace, Bulgari 1970s

centring on a silver didrachm, Velia Lucania, 334-300 BC, obverse with the Head of Athena right, in winged and crested Attic helmet, the reverse with a lion standing right on an exergual lion; triskeles above, Φ and I to either side; $\Upsilon\epsilon\lambda\eta\tau\omega\nu$ in exergue, within a circular frame accented with brilliant-cut diamonds and rubies, to a graduated flattened curb-link chain, *length approximately 39cm, signed Bulgari, numbered, maker's marks, the reverse with inscription*

R20 000 – 30 000

38

**Gem-set and gold necklace,
Erich Frey, 1970s**

designed as a series of fancy pierced
nugget-shaped links joined by pierced
oval links embellished with various cuts
and sizes of amethyst, green tourmaline,
citrine, aquamarine and golden quartz
stones, with a detachable pendant
set with an oval-cut citrine weighing
approximately 50 carats enclosed by a
pierced frame, *length approximately 92cm,
maker's marks, approximately 410g (2)*

R80 000 – 100 000

LITERATURE

Graham Hughes, *The Art of Jewellery*,
Studio Vista Publishers, London, 1972, p143
where the jeweller Erich Frey is noted.



Vladimir Griegorovich Tretchikoff was born in Petropavlovsk, in distant north-eastern Russia on a peninsula overlooking the Pacific Ocean. In 1917, to escape the Russian Revolution, the family fled south to Chinese Manchuria, where the young Tretchikoff became a set painter in the Harbin Opera House. It was here that his passion for theatre, opera and spectacle were nurtured. He met and married his beloved wife Natalie in Shanghai in 1932. They soon relocated to Singapore where they became part of the cosmopolitan social set that frequented places like the Dutch Club.

Natalie was inevitably the centre of attraction at these glittering events dressed in ball gowns and jewellery designed by her devoted husband. Her striking good looks and his penchant for theatricality are reflected in dramatic designs that evoke historical periods and exotic locations.

However, when the Second World War spread to the Pacific in 1940, Natalie and their daughter Mimi were evacuated and the family lost all contact. In 1946 they were re-united in South Africa. Tretchikoff went on to become one of the most commercially successful artists of all time. This remarkable necklace, designed by Tretchikoff and made in Cape Town, is an extraordinary art piece and the embodiment of an abiding love that triumphs against all odds.

Vladimir and Natalie Tretchikoff
photograph courtesy of the Tretchikoff family

Pigeon's Luck, Vladimir Tretchikoff and Anthony Hocking, Collins, St James' Place, London, 1973, p128



Russians offer light and serious forms of art, Tretchikoff has tried his hand at fashion pictures. His efforts proved a success and he soon incorporated several styles, best known among which were those combining the foreign and Chinese trend in women's clothing.



39

Amethyst and gold fringe necklace, designed by Vladimir Tretchikoff

designed as a graduated fringe of articulated arrow-shaped amethysts of various cuts, suspended from a herring-bone chain embellished with round-cut stones, the central drop composed of three pear-shaped and a round-cut amethyst, *length approximately 40cm*

R100 000 – 120 000

PROVENANCE

This necklace was designed by Vladimir Tretchikoff for his wife, Natalie. Although unsigned, it was possibly made by the jeweller, Pagliari, Cape Town.

Marjorie Reynolds was the daughter of the celebrated South African artist, Dorothy Kay, and author of the monograph *“Everything you do is a portrait of yourself” Dorothy Kay: A Biography*. Reynolds is remembered as an extraordinary woman – a widely read intellectual, interested in the arts and literature and a terrific conversationalist. An unusual person, who abhorred ordinariness, her favourite pronouncement was “Normal is Nul ... The very great are also very odd”.

She was known to have a keen eye for beauty and was an avid collector of antiques, fine fabrics and jewels.

Reynolds was an independent thinker who encouraged creativity. The stones in these remarkable rings were sourced from family jewels and reset into innovative and dramatic designs in the early 1980s. They bear the hallmarks of contemporary international art of the previous decades such as the Pop Art sculptures of Eduardo Paolozzi, or the paintings of Post-painterly Abstractionists like Jules Olitski and Sam Francis.

Her substantial collection, bequeathed to the South African National Gallery in 1992 as The Kay Bequest included paintings by Dorothy Kay and her sister Beatrice, Lady Glenavy, as well as prints, drawings and an archive of letters.



Marjorie Reynolds

The following two lots were designed as rings for the index finger. Majorie Reynolds worked in collaboration with the jewellers, Abe Pass and Uwe Koetter. Mrs Reynolds supplied the jewellers with the stones and gold, and with her heightened theatrical style, gave them the freedom to design these confections of glamour, which reflected her individualistic personality.

40

**Emerald and diamond ring,
Uwe Koetter, 1982**

of bombé design composed of textured cubes embellished with rectangular emerald-cut and eight-cut emeralds and six old-cut diamonds, size U, signed with maker's marks

R15 000 – 20 000

PROVENANCE

Marjorie Reynolds and thence by descent to the current owner

41

**Emerald, diamond and garnet
dress ring, Abe Pass, 1983**

abstract rectangular tablet design embellished with emerald-cut emeralds and garnets of various sizes, seven collet-set round brilliant-cut and old-cut diamonds, size T, signed Pass, small stone deficient

R14 000 – 18 000

PROVENANCE

Marjorie Reynolds and thence by descent to the current owner

40



41





42



43



44

42

18ct gold chain

designed as a line of open circular links connected by oval links, length approximately 42,5cm, 95g

R20 000 – 25 000

43

Diamond and platinum ring

centring a claw-set marquise-shaped diamond weighing 3.813 carats between shoulders set with claw-set pear-shaped diamonds weighing 1.09 carats, size M

R90 000 – 100 000

Accompanied by a report no. 409749/511983 from The Jewellery Council of South Africa stating that the diamond weighing 3.813 carats is TW (L) in colour and SI2 in clarity

44

Diamond ring

of architectonic design, pave-set with brilliant-cut diamonds weighing approximately 6.88 carats, size O

R45 000 – 50 000



45



46



47

45

Diamond pendant

designed as a solitaire, collet-set with a brilliant-cut diamond weighing approximately 2.20 carats, to a box-link chain, *length approximately 40cm*

R80 000 – 90 000

46

Diamond and emerald brooch, 1970s

designed as a floral spray, set with two claw-set brilliant-cut diamonds and eighteen eight-cut diamonds embellished with a marquise-shaped and three round claw-set emeralds, *maker's mark, T.F.&S*

R6 000 – 8 000

47

Diamond ring

designed with spreading multi strands, the front accentuated with claw-set brilliant-cut diamonds, weighing approximately

2.56 carats, *size M*

R18 000 – 20 000



48



49



50



51

48

Diamond and gold ring
designed as two interlocking
diamond-shaped links, one link
embellished with brilliant-cut
diamonds, *size N¹/₂*

R7 000 – 9 000

49

**Diamond five stone ring,
Schwartz**
designed as five lines terminating in
collet-set kite and triangle-shaped
diamonds, weighing approximately
1.73 carats, *size N, maker's mark*

R40 000 – 50 000

50

Pair of gold earclips
of ribbed concave square-shape
outline, *clip fittings, maker's marks,*
15g (2)

R4 000 – 6 000

51

Gold and diamond necklace
designed as a line of brick-links
to an annular clasp set with a
cabochon ruby and brilliant-cut
diamonds, *length approximately*
39,5cm, maker's mark, 55g

R9 000 – 12 000

52

Pair of diamond earclips

designed as hoop clips with lattice open work, millegrain-set with brilliant-cut diamonds (2)

R10 000 – 12 000

Sold

Sotheby's, Jewels, Antique, Period and Contemporary, London, 23 March 2005, Lot 155

53

Diamond ring

of lattice open work design, the front set with brilliant and baguette-cut diamonds, size P

R8 000 – 12 000

54

A pair of diamond earrings

of cluster design, each claw-set to the centre with a brilliant-cut diamond to a surround of nine brilliant-cut stones, weighing approximately 1.80 carats, *post and butterfly fittings* (2)

R12 000 – 15 000

55

Diamond ring

designed as a cluster, claw-set to the centre with a brilliant-cut diamond weighing approximately 1.30 carats within a surround of twelve brilliant-cut stones, size I

R25 000 – 30 000



52



53



54



55

56

Diamond ring

set to the centre with a claw-set brilliant-cut diamond, weighing approximately 1.30 carats, size J¹/₂

R15 000 – 20 000

56



57

Fancy vivid yellow diamond ring

tubular set with a round brilliant-cut fancy vivid yellow diamond weighing 1.1730 carats, size R

R50 000 – 60 000

Accompanied by a report no. 100403409 from E.G. Laboratory South Africa, stating that the diamond weighing 1.1730 carats is fancy vivid yellow colour and VS1 clarity

57



58

Diamond ring

collet-set to the centre with an old-cut diamond, weighing approximately .85 carats, to a wide hammered band, size O¹/₂

R10 000 – 15 000

58



59

Three stone diamond ring

set with three brilliant-cut diamonds weighing approximately 2.50 carats, size K

R35 000 – 40 000

59



60

An 18ct yellow and white gold necklace

of textured twist-turned rope-work design, length approximately 99cm, and a matching bracelet, length approximately 20cm, 105g all in (2)

R16 000 – 18 000

60

61

Diamond ring

claw-set to the centre with a marquise-cut diamond weighing approximately 1.50 carats, size P¹/₂

R24 000 – 26 000



61

62

Diamond ring

claw-set to the centre with a brilliant-cut diamond weighing approximately 1.49 carats, size T, and a diamond and gold textured band set with three claw-set baguette-cut diamonds, size T, 15g (2)

R20 000 – 22 000



62

63

Diamond ring

designed as a flowerhead, claw-set to the centre with a brilliant-cut diamond, the petals set with marquise-cut diamonds, weighing approximately 1.40 carats, size S¹/₂

R9 000 – 12 000



63

64

Pair of diamond pendant earrings

torpedo-shaped, each set with four graduated brilliant-cut diamonds weighing approximately 1.75 carats, hook fittings, and a diamond ring, marquise-shaped with scalloped edges, millegrain-set with old-cut diamonds weighing approximately 1.15 carats, size 1 1/2 (3)

R14 000 – 16 000



64

65

An unset Fire-rose round-cut diamond

R15 000 – 18 000

Accompanied by a report no. 100902619/509404 from E.G. Laboratory, South Africa, stating that the diamond weighing 2.1010 carats is Greyish Brown (ECG)R in colour and I1 clarity

66

Unmounted sapphire

the oval cabochon weighing 12.837 carats

R10 000 – 15 000

Accompanied by E.G. Laboratory report no. 100907589 stating that the sapphire weighing 12.837 carats is Dark Mauve Corundum



65

67

Diamond ear stud

claw-set with a round brilliant-cut, intense pink natural fancy diamond, weighing 0.550 carats, post and butterfly fitting

R18 000 – 20 000

Accompanied by report no. 58351 from E.G. Laboratory, South Africa, stating that the 0.550 carat diamond is Intense Pink Natural Fancy in colour



66



67

68

Fancy-coloured diamond pendant

set with a radiant square-cut vivid fancy yellow diamond weighing 1.05 carats and a marquise-cut fancy intense brown and orange-yellow diamond weighing 0.55 carats divided by a collet-set brilliant-cut diamond, the bail pavé-set with brilliant-cut diamonds to a fine chain, length approximately 40cm

R70 000 – 80 000

Accompanied by a report no. 50500424/29662 from E.G. Laboratory South Africa, stating that the diamond weighing 1.0568 carats is vivid fancy yellow and SI2 clarity and a report no. 250209 from The Jewellery Council of South Africa stating that the diamond weighing 0.551 carats is fancy intense brown and orange-yellow and P1 clarity



68

69

Diamond ring

set to the centre with a round brilliant-cut diamond weighing 4.55 carats, between shoulders set with two brilliant-cut diamonds weighing approximately 0.70 carats, size K¹/₂

R190 000 – 200 000

Accompanied by a report no. 100301439/507841 from E.G. Laboratory, South Africa, stating that the diamond weighing 4.5570 carats is Light Fancy Yellow (Natural Colour Not Authenticated) and VS2 clarity



69

70

Tanzanite and diamond pendant necklace

centring on a pear-shaped tanzanite set within a frame of pavé and claw-set brilliant-cut diamonds, set to a bail in the form of a flowerhead collet-set with brilliant-cut diamonds, with a fine chain, length approximately 40cm (2)

R70 000 – 90 000

Accompanied by a report no. 100408499 from E.G. Laboratory, South Africa, stating that the tanzanite weighing 19,7270 carats is Blue Violet Vivid and I1 clarity



70

71

Emerald and diamond pendant

set to the centre with an emerald-cut stone weighing approximately 3.5 carats, surrounded by four round brilliant-cut and twelve marquise-cut diamonds weighing approximately 2.0 carats

Emerald untested

R15 000 – 17 000



71

72

Three stone diamond ring

designed as three claw-set brilliant-cut diamonds weighing approximately 2.07 carats, size M

R14 000 – 16 000



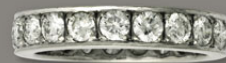
72

73

Diamond eternity ring

claw-set with a band of brilliant-cut diamonds weighing approximately 3.20 carats, size S

R14 000 – 16 000



73



74



75



76

74

Turquoise and diamond dress ring
designed as a cluster of seven cabochon turquoise stones centred with eight-cut diamond flowerheads, the shoulders and surround with textured-line decoration, the flowerheads mounted *en tremblant*, maker's marks, size $K\frac{1}{2}$

R1 500 – 2 000

75

18ct gold and amethyst ring
set with a cabochon-shaped amethyst, size *P*

R2 000 – 3 000

76

Peridot and pink tourmaline necklace

composed of a line of claw-set cushion-shaped peridots interspersed with pink tourmalines, length approximately 42cm

R30 000 – 40 000



77

Rolex
Gold oyster cushion-form wristwatch, 1930s
manual winding nickel movement with 15 jewels,
9 ct gold case with two-toned dial, Arabic numerals,
subsidiary second dial, cushion-form bezel, water
resistant type case, *later screw-down crown, dial and
movement signed, diameter 28mm*

R30 000 – 40 000



78

Patek Philippe
18k gold wristwatch with integral woven bracelet,
1960, ref. 799700
manual winding damascened nickel lever movement,
18 jewels, stamped twice with the seal of Geneva, Gyromax
balance, adjusted to heat, cold, isochronism and five positions,
champagne dial applied with gilt baton numerals, chamfered
bezel, snap on back, 18k gold integral woven bracelet with
Patek Philippe locking clasp, case and dial signed, suede case,
diameter 33mm

R50 000 – 60 000



79

Cartier
Gold Vendôme wristwatch ref. 780903059

jewelled nickel lever movement, mono-metallic balance, white dial with Roman numerals, 18k gold case with moulded bezel, stamped Cartier numbers to the back, sapphire cabochon set winding crown, dial, case and movement signed, with an 18k gold Cartier buckle, *diameter 33mm, approximate length 30cm*

Accompanied by a Cartier numbered certificate, presentation case, outer card case

R20 000 – 30 000



80

Rolex
Gold oyster perpetual automatic wristwatch with day, date and bracelet, circa 1988, ref. 0128950

18k, rhodium plated lever movement, 27 jewels, free-sprung mono-metallic balance, champagne dial, applied baton numerals, apertures for day and magnified date, 18k gold oyster case with screw-down crown and case back, reeded bezel, case, dial and movement signed, with Rolex president bracelet, *diameter 36mm, case no 5812108*

Accompanied by Rolex presentation case, outer card case

R40 000 – 50 000



81

Omega
Gold Constellation automatic chronometer
wristwatch with date and bracelet,
ref. 564m A28081

nickel lever movement with 24 jewels, mono-metallic balance, satin finish gilt dial, applied with baton numerals and date dial, 18k gold polished case with stepped bezel, flattened lugs, screw-down back, case and dial signed, 18k gold Omega bracelet with folding clasp, *diameter 32 mm*

R24 000 – 28 000



82

Breitling
Gold Navitimer Montbrillant automatic
chronograph wristwatch, ref. H30030

nickel lever movement, 41 jewels, matt silver dial applied with pink gold baton numerals and hands, three engine-turned subsidiary dials for constant seconds, 30 minute and twelve hour register, outer track calibrated for tachometer and logarithmic scales, inner telemetric scale, 18k rose gold case with rotating milled bezel, screw down crown and snap on back, 18k rose gold Breitling folding clasp, case, dial and movement signed, *diameter 38 mm*

R40 000 – 50 000

83

**Jaeger-Le Coultre
An oversized 18k rose gold
automatic chronograph
wristwatch, ref. 146.2.25, Master
compressor Chronograph No
No097**

with jewelled nickel lever movement, mono-metallic balance, black dial with luminescent Arabic and baton numerals and hands, aperture for date at 6, three subsidiary dials indicating constant seconds, 30-minute and 12-hour registers, outer ring calibrated for tachometer, twist-lock guards for winding crown and chronograph pushers, back secured by four screws, leather bracelet with twin folding clasp, case, dial and movement signed, *diameter 42mm*

R100 000 – 120 000





84

Longines
A 'Weems' Navigation Special Edition Stainless Steel automatic wristwatch, ref. 1055

21 jewels nickel lever movement, white dial with Arabic numerals, rotating silvered central subsidiary dial for seconds, 12- and 24-hour registers, blue-steel hands, stainless steel case, and sapphire crystal display back, dial and movement signed, *diameter 32mm*

R10 000 – 15 000



85

Cartier
A 'Roadster' Stainless Steel automatic Tonneau-form wristwatch with date and bracelet, circa 2005, ref. 700323CD-2510

jewelled nickel lever movement, mono-metallic balance, silvered dial with Roman numerals with blue-steel hands and luminous centre, magnified aperture for date display at 3 o'clock, stainless steel tonneau-form case secured by 8 screws, case, dial and movement signed, stainless steel Cartier bracelet and folding clasp, additional calf-skin leather and blue crocodile straps with folding deployment buckle, *diameter 37mm (3)*

R15 000 – 20 000



86

Tag Heuer
A stainless steel 'Monaco' chronograph wristwatch
ref. CW 2113-0

cal. 12 nickel lever movement, blue dial, luminescent rodium-plated hands and dot, baton numerals, date subsidiary dial, 2 sub-counters at 3 and 9 o'clock for seconds and minutes, stainless steel case with sapphire crystal glass and screw-down case back, polished stainless steel push-button, alligator strap with Tag Heuer folding buckle with safety push buttons, presentation case, diameter 39mm

R15 000 – 20 000



87

Alpina
A stainless steel Startimer Chronograph wristwatch
ref. AL725x4R16-10, ref. 1339437

nickel lever movement, white dial with Arabic numerals, luminescent dot and hands, two subsidiary dials calibrated for 30-minute and 12-hour registers, aperture for date, two round chronograph pushers in the band, stainless steel case with screw-down crown and sapphire crystal display back, case, dial and movement signed, stainless steel clasp, diameter 40mm

R5 000 – 6 000

88

**Corum
18k rose gold Golden Bridge
Limited Edition wristwatch,
ref. 141234-113-550-55F**

cal.c.0113, 18k rose gold visible hand-engraved plate and bridges, 19 jewels, manual winding and time-setting crown located at 6 o'clock actuating 'slipping spring winding system', the movement with a power reserve of 40 hours, 18k tonneau-form case with sapphire crystal on four sides, screw-down sapphire crystal back, case and movement signed, with an 18k rose gold Corum buckle, *diameter 32mm*

Accompanied by a wooden Corum presentation case and outer card case. Also with a blue leather folder containing certificate of origin, instructions and gloves

R80 000 – 100 000

