



The Vineyard Hotel, Conference Centre,  
Newlands, Cape Town  
Monday 8 October - 3pm


## Furniture, Silver, Ceramics and Glass

Lots 131-382

OPPOSITE

lot 264 A late Victorian silver-gilt Arts and Crafts bowl,  
Charles Robert Ashbee, London, 1896





PROPERTY OF A COLLECTOR



131

**A Sheffield plate four-light centrepiece, circa 1840**

with four detachable acanthus-leaf scroll arm supports terminating in candle sconces and detachable drip-pans, the central column surmounted by a pierced basket, raised on a stepped circular base, on shell and scroll feet, *some repairs and restorations*, 88cm high

R8 000 – 10 000

132

**A Victorian silver wine ewer, William Hunter, London, 1865**

the baluster body chased with fruiting vines, applied with a branch-form scroll handle, with hinged cover, on a spreading circular foot, 866g, 35,5cm high

R15 000 – 20 000

133

**A pair of German silver four-light candelabra, Jakob Grimminger, early 20th century**

each with four scrolling arms terminating in sconces with beaded rims, the knopped column with central bud finial, on a circular spreading foot with beaded rim, *loaded*, 15cm high (2)

R8 000 – 10 000

134

**A George V silver two-handled tray, Ball Bros, Birmingham, 1911**

oval, moulded shell-and-scroll border, on four scroll and acanthus-leaf feet, 4100g, 72,5cm wide over handles

R25 000 – 30 000



131



132



133

135

**A George V silver five-piece tea and coffee service, William Suckling, Birmingham, 1922**

comprising: a teapot, a coffee pot, a hot water jug, a milk jug and a two-handed sugar basin, each of wavy outline, scroll handles, raised on four shell-headed pad feet, engraved with the initial 'C', with turned ebonised handles and finials, 2605g all in, the coffee pot 20cm high (5)

**R15 000 – 20 000**

136

**A William IV silver 'Old English' pattern soup ladle, London, 1835**

the terminal engraved with a crest, 218g

**R2 000 – 3 000**

137

**A part set of silver 'Rat-Tail' pattern flatware, Gee & Holmes, Sheffield, 1977**

comprising: 12 dinner knives, 24 dinner forks, 18 table spoons, 12 soup spoons, 12 fish knives, 12 fish forks, 20 dessert knives, 24 dessert forks, 12 dessert spoons, 23 teaspoons, 12 coffee spoons, a carving knife and fork, a game knife and fork, a pair of fish servers, and a pair of sauce ladles, 8805g; and a silver 'Kings' pattern cake server, E Viner's Ltd, Sheffield, 1965 (190)

**R45 000 – 50 000**

138

**A South African 'David Livingstone' commemorative silver salver**

Precious Metalsware, No 320 of a limited edition of 500, circular, chased in relief with the image of David Livingstone standing before the Victoria Falls enclosed by a border depicting images of pioneers, 26cm diameter, 450g, cased and with presentation brochure

**R2 000 – 3 000**



135



137

part lot

139

**A pair of electroplate three-light candelabra, late 19th century**

each oval lobed base with beaded rim, reeded scroll candlearms, beaded drip-pans, part-lobed sconces, detachable beaded nozzles and central flame finial, 21,5cm high (2)

**R5 000 – 7 000**

140

**A pair of electroplated entrée dishes and covers on stands, Walker & Hall**

rectangular with beaded borders, the sides with ribbed carrying-handles, raised on ribbed legs with paw feet joined by an X-shaped stretcher centred by a detachable burner, 20cm high (2)

**R1 500 – 2 000**



141



141 detail

141

**A Dutch marquetry and walnut silver table, 19th century**

the rectangular top with moulded gallery above a frieze drawer, on cabriole legs, *restorations*, 68cm high, 74cm wide, 40,5cm deep

R10 000 – 15 000

142

**A Dutch marquetry and walnut side table, 19th century**

with shaped top above a conforming long and a short drawer, on cabriole legs with pad feet, 72,5cm high, 71cm wide, 47cm deep

R10 000 – 15 000



142 detail



142





143 detail



143

143

**A Dutch marquetry and walnut bombé bureau, early 19th century**

*later inlaid, the shaped fall-front enclosing secret compartments, a well and an arrangement of drawers and pigeon holes above three graduated bombé drawers, on paw and ball feet, 109cm high, 130cm wide, 64cm deep*

**R20 000 – 30 000**

144

**A pair of Dutch marquetry and walnut side chairs, late 19th century**

*with arched shaped cresting above a vase-shaped back splat, drop-in seat, on cabriole legs and paw feet, one chair with applied label, S & H Jewell, 132 High Holborn, London, WC, restorations (2)*

**R6 000 – 8 000**



144



146 detail

145

**A Dutch walnut and marquetry display cabinet, late 18th/early 19th century**

with shaped cornice centred by a leaf cresting above a pair of glazed panelled doors enclosing two shaped shelves, with three graduated bombé drawers below, on claw and ball feet, 230cm high, 178cm wide, 51cm deep

R60 000 – 80 000

146

**A Davenport Longport topographical part fruit set, 19th century**

comprising: eleven plates and two comports, the centre of each piece painted with landscapes enclosed by green and gilt borders within white and gilt rims, *red-printed factory mark, Davenport, Longport, Staffordshire, the plates 24cm diameter* (13)

R5 000 – 8 000



145



147

**A porcelain inkstand, late 19th century**

of pierced rococo outline, the central section with covered quill compartment and a pair of covered inkwells, painted with 'dishevelled' birds within turquoise and gilt borders, *restoration to finials, pseudo Chelsea gold anchor mark, 29cm wide over handles; and a pair of Continental vases, late 19th century, each flared body painted with a spray of roses enclosed by sprigged flowerheads, with leaf-shaped handles, raised on a shaped domed foot, gilt highlights, restorations and chips, 18cm high (3)*

R3 000 – 4 000

148

**A large Carlton Ware 'New Mikado' pattern vase, 1916–1923**

the baluster body enamelled and gilded with Oriental figures before island pagodas reserved against a blue ground, lustre interior, *printed factory mark, painted pattern number, 48cm high*

R3 000 – 4 000

149

**A Royal Bonn vase, late 19th century**

ovoid, painted with the portrait of a maiden, signed indistinctly, the reverse with a scene of a lake, moulded gilt highlights to the base and neck, *some gilding rubbed, printed factory mark and painted numerals, 18cm high*

R2 000 – 3 000

150

**A bronze figure of a maiden, Eutrope Bouret (1833–1906)**

modelled leaning against rocks, holding a spray of flowers, on a shaped base, *incised BOURET, 41cm high*

R4 000 – 6 000

151

**A bronze figure of a mussel catcher, Charles Anfrie (1833–1905)**

modelled with the figure of a bare-footed maiden holding a basket of mussels, shielding her eyes with her right hand and scanning the horizon, with shells at her feet, *incised C Anfrie, 40cm high*

R4 000 – 6 000

152

**A bronze figure of Lorenzo de' Medici, late 19th century**

raised on a stepped rouge marble base, *28cm high, excluding base, 37cm high, including base*

R4 000 – 6 000

153

**A pair of French bronze figures of classical maidens, after Clodion, late 19th/early 20th century**

each with raised arms, one holding a ewer, the other a bunch of grapes, on circular black marble bases, *the bases with restorations, 46cm high, excluding bases, the bases 6,5cm high (2)*

R10 000 – 15 000



154

154

**A bronze bust of Napoleon, after Antonio Canova (1757–1822)**

*signed Canova, 57cm high*

R25 000 – 30 000

155

**A pair of French bronze models, 'Faneuse' and 'Faucheur', Edouard Drouot (1859–1945)**

each standing on a circular rouge marble base, *signed Drouot, 82cm high (2)*

R30 000 – 40 000



155  
part lot



157



158

156

**A French spelter figural lamp, 'L'Etude Affranchit La Pensée', after Emile Louis Picault (1833-1915)**

modelled with the figure of a young man seated on an eagle, his right hand supporting a flaming torch, with frosted globe, 82cm high, on a rouge marble plinth, 108cm high (2)

**R8 000 – 10 000**

157

**A French bronze figural group, 'Knowledge', after Jean Louis Gregoire (1840-1890)**

cast with two classical maidens reading a manuscript, on an oval base, signed, 50cm high

**R20 000 – 30 000**

158

**A bronze figure of a mounted cavalry officer, French, late 19th century**

indistinctly signed Cn G Ruille, modelled bearing a military standard in his right hand, on a shaped octagonal base, 73cm high, 60cm long

**R50 000 – 80 000**





162 detail

159

**An Empire mahogany and brass-mounted marble-topped commode, circa 1810**

the rectangular mottled grey marble top above a frieze drawer, with three long drawers below flanked by turned columns, on rounded feet, *restorations*, 91cm high, 130cm wide, 63cm deep

R35 000 – 45 000

160

**A French Louis XVI style marble-topped mahogany and brass-inlaid commode, circa 1900**

the moulded and shaped rectangular white marble top with outset rounded front corners above three long graduated drawers inset with brass banding, flanked by fluted sides, on turned tapering feet, 82cm high, 108cm wide, 49cm deep

R15 000 – 20 000

161

**A pair of rouge marble and gilt-brass mounted columns, early 20th century**

each with square top raised on a fluted column with acanthus-leaf cresting, on a stepped moulded square plinth base, *restorations*, 105,5cm high, 26cm square (2)

R10 000 – 15 000

162

**An Italian Maiolica Urbino style two-handled vase, late 19th century**

painted in 16th century manner with mythological scenes, the lip and shoulders moulded with serpent handles and masks, *some loss to one serpent*, 72cm high

R20 000 – 25 000

163

**A pair of French walnut armchairs, late 19th/early 20th century**

each upholstered back with leaf- and flowerhead cresting, downcurved arms, on cabriole legs (2)

R10 000 – 12 000

164

**A pair of satinwood and ebonised brass-mounted marble-topped gueridon tables**

each with circular white and grey-veined top, the frieze carved with latticework and centred by gilt-metal flowerhead bosses, on tapering square-section legs with brass cappings, 72cm high, 75cm diameter (2)

R30 000 – 40 000

165

**A marble bust of Venus, late 19th century**

her hair dressed with shells, on a waisted circular socle, *repaired, minor chips*, 58cm high

R12 000 – 15 000

166

**A mahogany and gilt-metal mounted pedestal, late 19th century**

the square top above a tapering panelled column, the upper section applied with gilt-metal swags and flower bosses, on a square base with gadrooned border, 107cm high, 27,5cm square

R10 000 – 12 000



163



164



165 and 166





167



168

167

**A pair of Chinese Canton Famille  
Rose brass-mounted baluster  
temple jars, Qing Dynasty,  
19th century**

enamelled with panels of courtly scenes  
framed within floral borders, *hairline cracks*,  
*gilding worn*, 62cm high (2)

**R40 000 – 50 000**

168

**A Chinese Famille Rose 'butterfly'  
bottle vase, Guangxu (1875–1908)**

painted with brightly enamelled  
butterflies with a lotus and foliate band  
at the shoulder, the neck with a *ruyi* head  
border, *six-character mark*, 38,5cm high

**R40 000 – 50 000**

169

**A French Louis XV style giltwood  
overmantel mirror, late 19th  
century**

rectangular, the arched bevelled plate  
within strapwork and foliate-moulded  
beaded borders surmounted by C-scroll  
leaf and flower cresting, the sides headed  
by female terms, on an acanthus-leaf-  
carved C-scroll and foliate base, *some  
restorations, 151cm high, 110cm wide*

**R40 000 – 50 000**

170

**A set of four Louis XVI style  
giltwood side chairs**

each with oval back, foliate cresting,  
serpentine seat on fluted legs (4)

**R12 000 – 15 000**



170

169 detail







171



171

**A gilt-metal and bronzed clock  
garniture, late 19th century**

the 10cm embossed gilt dial with  
enamel numeral cartouches,  
bell-striking movement, the case  
surmounted by a cherub with his bow,  
the whole with pierced latticework  
sides, on acanthus-leaf scroll feet,  
the shaped base with toupie feet,  
47cm high, and a pair of five-light  
candelabra, the candelarms supported  
by a putto holding grapes, raised  
on a shaped base with toupie feet,  
55cm high (3)

**R30 000 – 40 000**



172

172

**A French gilt-metal and porcelain-mounted mantel clock, late 19th century**

the 9cm enamel dial with roman numerals, with bell-striking *Vincenti & Cie* movement, the back-plate stamped '*Richoud F a Paris, 458*'; the case surmounted by the figure of a reclining maiden with a ewer above a pair of shaped porcelain panels painted with summer flowers within turquoise and gilt borders, raised on foliate scroll supports and toupie feet, 41cm high

**R8 000 – 10 000**

173

**A brass mantel clock, late 19th century**

the 13cm enamel dial with arabic numerals, pierced hands, gong-striking *Marti & Cie* movement, the architectural case with pierced sides, on bracket feet, 43cm high

**R5 000 – 8 000**

174

**A pair of French giltwood and caned bergères, late 19th century**

each with beaded and leaf borders, the arms carved with ram's head terminals, on acanthus leaf-carved cabriole legs with scroll feet (2)

**R15 000 – 20 000**

175

**A pair of Louis XV style walnut veneered, inlaid and gilt-metal mounted side tables**

each rectangular shaped top with canted corners above a pair of frieze drawers, the reverse and sides inlaid with oval panels, on cabriole legs, 67,5cm high, 40cm wide, 26cm deep (2)

**R6 000 – 8 000**

176

**A mahogany occasional stool, possibly Italian**

with solid seat, the shaped side supports with gryphon terminals united by a stretcher, on leaf-carved legs with hairy paw feet

**R3 000 – 5 000**

177

**A satinwood and parquetry gilt-metal mounted dressing table, late 19th/early 20th century**

the three-part hinged bevelled mirror above a pair of small drawers, the rectangular top with rounded corners with a pair of frieze drawers below, on turned tapering legs with brass cappings, 150cm high, 100cm wide, 50cm deep; and a fruitwood side chair, late 19th century, the moulded shaped top rail above a pierced lyre-shaped splat, caned seat, on turned tapering legs with brass cappings, restorations (2)

**R15 000 – 20 000**



174



178

**A pair of Swedish walnut bookcases, late 19th century**  
each with arched pediment centred by a cartouche above a pair of glazed doors enclosing four adjustable shelves, the sides carved with fluted columns, the lower half with a pair of frieze drawers above a pair of panelled doors enclosing a shelf, on bun feet, 253cm high, 105cm wide, 55,5cm deep (2)

**R40 000 – 60 000**

**PROVENANCE**

Simon Hatchwell Antiques, 533 Kings Road, London  
Kevin Keegan, Parkside Manor, Wynyard Park, Cleveland, 1997  
Tennants, 17 July 2008, lot 1662





179

**A George III mahogany and oak longcase clock, David Collier Gatley, late 18th century**

the 33cm dial with leaf spandrels, with arcaded date ring, engraved centre with seconds dial, arabic and roman silvered chapter ring, the arch with a painted moon disc below the signature *DAVID COLLIER GATLEY*, with rack and bell-striking movement, the case with swan-neck cresting, ball and spire finial and fluted pillars, the trunk with cross-banded door flanked by reeded pilasters, *later* plinth and bracket feet, *movement and case possibly associated*, 220cm high

R25 000 – 30 000

180

**A pair of walnut armchairs, 19th century**

each with rectangular back, leaf-carved arm supports, on scroll legs joined by wavy stretchers (2)

R14 000 – 16 000

181

**A George III mahogany tripod table, third quarter 18th century**

the circular tilt-top above a bird-cage support, on a baluster ring-turned column with cabriole legs and pad feet, *restorations*, 71,5cm high, 75,5cm diameter

R7 000 – 9 000



180



179



182

**A set of four Regency  
rosewood side chairs**

each with plain top rail above a pierced  
foliate midrail centring a foliate patera,  
caned seat, on ring-turned lobed legs  
(4)

R6 000 – 8 000

183

**An early Victorian rosewood  
circular occasional table, circa  
1840**

raised on a circular column, the  
tripartite base on bun feet, 76cm high,  
55cm diameter

R5 000 – 7 000

184

**A pair of George I style  
upholstered and mahogany  
library armchairs**

each with shaped back, the curved  
arm supports carved with eagles'  
heads, on leaf-carved cabriole legs  
with claw and ball feet (2)

R20 000 – 30 000

185

**A Regency rosewood and  
brass inlaid sofa table**

the rectangular twin-flap top inlaid  
with brass stringing above a pair of  
frieze drawers and opposing *faux*  
drawers, on plain end supports joined  
by a pole stretcher, outswept legs,  
brass paw feet and castors, 73cm high,  
145cm wide open, 72cm deep

R25 000 – 30 000



186

**A Regency mahogany settee**

the shaped back with double-scroll cresting centring lotus leaves, outscrolled arms, on leaf-scroll feet, 235cm long

R9 000 – 12 000



186

187

**A mahogany library armchair, 19th century**

in Regency style, with rectangular back and sides, padded arm supports, the sides fitted with adjustable book- and candle-stands, fluted baluster legs, brass cappings and castors, with *later* black leather upholstery

R30 000 – 40 000

190

**A Victorian rosewood library table**

the rectangular top supported on tapering columns with cabochon-carved collars, on leaf-headed cabriole legs joined by a conforming stretcher, scroll feet with castors, 72cm high, 107cm wide, 55cm deep

R8 000 – 10 000



187

188

**A William IV rosewood and caned bergère, circa 1835**

with curved back and downswept scrolled arms, on ring-turned fluted legs with brass cappings and castors

R20 000 – 25 000



188

189

**A William IV rosewood card table**

the rectangular top with cabochon border enclosing a red baize playing-surface, on a ribbed baluster column with four leaf-carved cabriole legs, paw feet and castors, 73cm high, 91cm wide, 46cm deep

R9 000 – 12 000



191

**A Victorian walnut oval centre table**

raised on a leaf-carved baluster column, on four leaf-carved cabriole legs with scroll feet and castors, 71cm high, 148,5cm wide, 110cm deep

R15 000 – 20 000

192

**A Victorian walnut and inlaid games table**

the shaped tilt-top inlaid with a chequerboard enclosed by scrolling foliate motifs, on a ring-turned column with three leaf-carved cabriole legs and pad feet, 73cm high, 75cm wide

R10 000 – 15 000

193

**An Adam Revival style gilt and composition wall mirror**

the oval plate with urn-shaped cresting and foliate scrolls, the sides carved with winged sphinx, the pierced apron carved with swags, anthemions, flowerheads and scrollwork, *regilded and some restorations*, 46cm high

R15 000 – 20 000

194

**A Victorian walnut card table**

with rectangular moulded top enclosing a red baize-lined playing surface, on four ring-turned fluted supports raised on leaf-carved cabriole legs with scroll feet joined by a conforming stretcher, with castors, 72,5cm high, 91,5cm wide, 45cm deep

R9 000 – 12 000



195



196



198



195

**A pair of George III style Edwardian beechwood and painted armchairs** each oval back with pierced splat carved with an urn and swags of flowers centred by a tablet painted with a classical figure, serpentine caned seat, on square-section tapering legs (2)

**R15 000 – 20 000**

196

**A pair of George III style Edwardian satinwood and painted demi-lune tables**

each crossbanded top painted with musical trophies, swags of flowers and ribbons above a conforming frieze, on square-section tapering legs, *71,5cm high, 101cm wide, 50cm deep* (2)

**R30 000 – 40 000**

197

**A Victorian walnut and upholstered chaise longue**

the buttoned frame with high overscrolled end support, on ring-turned legs with brass castors, *190cm long*

**R5 000 – 7 000**

198

**A Victorian gilt and silvered-brass agate-mounted clock garniture, English/French, 1871**

the 9,5 enamel dial with roman numerals, with bell-striking *Japy Frères* movement and Brocot escapement, the case of oval form surmounted by a merboy blowing his horn, the shoulders with pierced and engraved handles, the front applied with banded-agate cabochons on foliate and shell engraved reserves, and with a gartered crown above XII, the whole raised on a rectangular stepped base, centred by a shell and coral flanked by hippocampi, on toupie feet, *stamped registration mark, the back plate stamped 298, 50cm high*, and a pair of conforming three-light candelabra, *44cm high*, each with velvet-lined giltwood base, ebonised oval stand on bun feet; with three glass domes, *the tallest 62cm high* (3)

**R40 000 – 50 000**



199

**A Victorian rosewood and velvet-upholstered library armchair**

the shield-shaped back surmounted by the Dundas crest, downcurved scroll arm supports, foliate-carved seat-rail, on cabriole legs and scroll feet

R6 000 – 8 000

200

**A walnut and fruitwood inlaid chest-on-stand, 19th century and later**

the outset moulded cornice above two short and three long graduated drawers, the stand with three drawers, with wave-shaped apron, on cabriole legs and pad feet, *alterations, the drawer fronts with later veneers, 160,5cm high, 105cm wide, 53cm deep*

R20 000 – 25 000

201

**A Victorian walnut, amboyna and gilt-metal mounted credenza**

the convex shaped top above a pair of glazed door flanked by a further pair of conforming glazed doors enclosing red fabric-lined shelves with mirrored backs, the fronts with columns, on a conforming base with ebonized turned feet, *103cm high, 172cm long, 43cm deep*

R18 000 – 24 000



201



202

202

**A Victorian ebonised, amboyna and gilt-metal mounted credenza**

the shaped breakfront top above a central door applied with an oval blue and white Parian plaque and enclosing a shelf, flanked by a pair of columns and recessed arched mirror plates, the glazed sides enclosing two shelves, on a conforming base, *110cm high, 170cm wide, 46cm deep*

**R15 000 – 20 000**

203

**A Royal Worcester 'Botanical' part dessert service, circa 1880**

the centre of each painted with various sprays of indigenous South African flowers and grasses against a white ground enclosed within a maroon band with gilt borders, comprising: 14 plates, 6 comports, in sizes, *areas of wear, repair, staining, hairline crack, impressed factory mark, the taller comports 14,5cm high* (20)

**R9 000 – 12 000**

204

**A Mason's Patent Ironstone Earthenware 'Mikado' pattern part dinner service, late 19th/early 20th century**

each piece printed and painted with a bird amongst peonies, prunus blossoms and chrysanthemums issuing from rockwork, enclosed within a shaped border of floral sprays, comprising: 24 dinner plates, 12 fish plates, 12 side plates, 12 soup plates, 2 vegetable tureens and covers, a sauce tureen, cover and stand, a gravy boat, a ladle, and two rectangular platters, in sizes, *printed factory mark, the larger platter 44cm wide* (67)

**R7 000 – 9 000**

205

**A cut-glass decanter, 20th century**

with faceted neck, the rounded body cut with oval panels of printies, *35cm high*; and another example, with tapering faceted neck, the globular body cut with bands of printies, *associated spire-shaped stopper, 27cm high* (2)

**R2 000 – 3 000**

206

**A Victorian mahogany butler's tray and stand**

the galleried tray with four pierced handles, on a turned X-shaped frame joined by stretchers, *bracing and restorations, 83cm high, 76cm long, 48,5cm wide*

**R4 000 – 6 000**

207

**A mahogany dining table**

the rectangular moulded top with rounded corners, on ring-turned baluster legs with brass cappings and castors, *75,5cm high, 300cm long, 132cm deep*

**R12 000 – 18 000**

203 detail





208

**A set of six George III style mahogany dining chairs and a pair of carvers, early 20th century**

each with pierced splat, stuff-over serpentine seat, on ribbed square-section legs (8)

R10 000 – 15 000

209

**An Edwardian style brass standard lamp**

the telescopic column flanked by three urn-headed columns, the tripartite base raised on three legs headed by rams' heads, on paw and circular pad feet, *165cm high, fully extended*

R6 000 – 8 000

210

**A George III style steel and brass basket grate**

incorporating an arched fireback, the serpentine-shaped front flanked by brass uprights surmounted by urn finials above a conforming pierced frieze, raised on square-section tapering legs, *60cm high, 78cm wide, 36cm deep*; and a set of brass fire irons, each with mask handle, comprising: a pair of tongs, a shovel and a poker (4)

R5 000 – 7 000

211

**A George III style steel and brass basket grate**

similar to the preceding lot, *60cm high, 78cm wide, 36cm deep*; a pair of brass andirons, each with turned columnar supports on a gadrooned domed base, *19cm high*; a set of brass fire irons, each with turned handle, comprising: a pair of tongs, a shovel and a poker; and a brass coal bucket, *24cm high* (7)

R6 000 – 8 000





212

**An oak and brass-bound bucket, late 19th century**

the sides applied with brass lugs, painted with the British coat of arms, with rope and leather handle, 30cm high

R2 000 – 3 000

213

**A pair of ebonised sycamore and silver-metal Corinthian table lights, designed by Linley, Belgravia, modern**

each tapering fluted column on a stepped square base, base signed Linley, 61cm high (2)

R8 000 – 12 000

214

**A Biedermeier-style mahogany and brass-mounted metamorphic television cabinet, designed by Linley, Belgravia, modern**

the rectangular outset top above a plain frieze, a pair of panelled doors below flanked by columns, with panelled sides on a plinth base, the interior fitted with television set, with electric motor, remote and manual controls, 110cm high closed, 176,5cm high open, 111cm wide, 75cm deep

R40 000 – 50 000

215

**A Japanese ebonised Yamaha Disklavier Mark III Series Playback grand piano, model DGC1B 6224548**

with compact control unit for playback, built-in CD drive, stereo amplifiers and dual two-way speakers, 16MB of internal memory, on square-section tapering legs, serial number 1925 on the solenoid unit, stamped Made in Japan, the base stamped KD0711039, 103cm high, 160cm long, 149cm wide; and a piano stool, en suite, 77cm wide (2)

R60 000 – 80 000

215



## Various properties

216

### A Sheffield plate six-light centrepiece, early 19th century

with a baluster column supporting six branches, with foliate drip-pan and nozzle centering a bowl, raised on a tri-form base, on three shell, leaf and scroll feet, engraved with an armorial, crest and initials, the whole with flowerheads and scrolling foliage, *78cm high*; and a pair of Sheffield plate three-light candelabra, early 19th century, each column moulded with acanthus leaves, the three branch arms with conforming decoration, the nozzles moulded with shells, raised on a circular leaf and scroll base, *50cm high* (3)

R20 000 – 30 000



216

217

### A pair of electroplate three-light candelabra, 19th century

each with tapering cylindrical stem and detachable reeded scroll branch, with foliate drip-pans, the central column with detachable acorn finial, on a circular footrim, *loaded, 44cm high* (2)

R6 000 – 8 000

218

### A pair of plated candlesticks, Mappin Brothers, Sheffield, first quarter 19th century

each tapering cylindrical stem with acanthus leaves and foliate knops, detachable foliate nozzle engraved with a crest, on a circular base with gadrooned and foliate decoration, *loaded, 25cm high* (2)

R3 000 – 4 000

219

### A pair of electroplate chamber sticks, Elkington & Co, mid 19th century

each with bands of diaper-work, the circular pan with conical extinguisher, the scroll handle with a crest, *15cm diameter* (2)

R300 – 400

220

### A Victorian electroplate Milton shield, signed Elkington & Co, and Morel Ladeuil Fecit, 1866

oval, moulded with scenes from Paradise Lost, centered by a panel of Adam and Eve with The Archangel Michael in the Garden of Eden, *86cm high*

R7 000 – 9 000



220

221

**A WMF electroplate inkstand, circa 1900**

shaped rectangular, modelled with the seated figure of Minerva flanked by a pair of electroplate-mounted glass inkwells, the front with a pair of female half-caryatids flanking a heart-shaped vacant cartouche, on paw and bracket feet, 26,5cm high, 48cm wide

**R6 000 – 8 000**

**LITERATURE**

Antique Collector's Club, *Art Nouveau Domestic Metalwork From Württembergische Metalwarenfabrik 1906*, page 280, illustration 84



221



224

222

**An Art Nouveau Plewkiewicz electroplate-mounted glass centrepiece, early 20th century**

the pierced frame with a circular dish, with the figure of a maiden supporting a vase, the glass enamelled with stylised flowers and line decoration, 50cm high; and a claret jug, en suite, 39cm high (2)

**R8 000 – 10 000**



222

223

**An electroplate-mounted cut-glass jug, Arthur Krupp, Berndorf, Austria, circa 1900**

the ovoid body with pineapple-cut decoration, the shoulder moulded in relief with leaves against a textured ground, the side applied with a twist-turned branch handle, the hinged cover with pineapple finial, on a circular spreading foot, 44cm high

**R4 000 – 6 000**

224

**A Pallme-König iridescent glass electroplate-mounted claret jug, circa 1900**

with undulating bulbous body, blue glass overlaid with green and purple iridescent forms, 29cm high

**R8 000 – 10 000**

detail





225

**A Cape silver covered jug,  
Martinus Lourens Smith, late  
18th century**

the shoulder engraved with a band  
of acorns, flowerheads and scrolls,  
the hinged cover with gilt bud and  
foliate finial, with leaf-capped wooden  
handle, 275g all in, 16,5cm high

**R40 000 – 50 000**

**PROVENANCE**

Johannes Henoch Marais (1851-1915)

Jannie Marias was born on the farm  
Coetzenberg, now the sports grounds  
of Stellenbosch University. He made  
his money by starting diamond  
delving operations on the Vaal River  
and Kimberley. After the consolidation  
of mining activities in Kimberley, he  
and his brothers eventually owned  
substantial interests in De Beers  
Consolidated Mines.

He returned to Coetzenburg in 1892  
and became an active politician and  
promoter of the Afrikaans language.  
He was instrumental in the formation  
of the Afrikaans newspaper, *Die  
Burger*.

More famously he is known as the  
main initial benefactor of Stellenbosch  
University, to whom he bequeathed  
£100 000 and after whom JS Marais  
Square, or 'Red Square' is named.

He was married to Elizabeth (Bessie)  
Deborah de Villiers, a sister of the  
current owner's great grandfather,  
Senator Wilhelm Bruckner de Villiers.  
Having had no descendants, Jannie  
and Bessie bequeathed funds to  
various charitable organisations in  
Worcester and Cape Town.

The Elizabeth Marais Bursary is still in  
existence at Stellenbosch University.



**LITERATURE**

*cf.* Stephan Welz, *Cape Silver and Silversmiths*,  
Balkema, Cape Town, 1976, page 75, where a similar  
example by Gerhardus Lotter is illustrated

226

**A Cape silver salver, Peter Clarke Daniel, circa 1830**

rectangular, the rim chased and engraved with flowerheads and foliage, the body with wrigglework and conforming decoration enclosing the inscription 'Door den Kerkenraad der Hervormde Gemeente in de Kaapstad aan den Heer L. Beil by gelegenheid der inweiding van het Nieuwe Orgel op den 11 July 1830'; on four later paw feet, 470g, 25cm wide

**R80 000 – 100 000**

**PROVENANCE**

Ludwig Heinrich Beil (1794-1852) was a German musician who worked as a teacher and church organist in Cape Town from the 1820s to 1840s. He was also well-known as a botanist.

This Cape silver salver was presented to him on 11 July 1830 by the Church Council of the Groote Kerk at the consecration of their new organ, as a token of their gratitude. This event, which was attended by the Governor and his family, included one of the first performances of choral music in a Cape church, by the *Liefhebbery Zangkoor* and the *Hollandsche Liefhebbery Musiek Gezelschap*, both under the direction of Beil.

In his authoritative book *Cape Silver and Silversmiths*, Cape Town, 1966, Stephan Welz notes that "few Cape salvers and trays have any engraved decoration". The exceptional quality of the engraving on the present example could be attributed to the fact that, apart from being a silversmith, Peter Clarke Daniel worked as a goldsmith and jeweller.



detail

227

**A Russian silver waiter, I Avdyeyev, Moscow, 1852-1862**  
circular, the cavetto with strap-work, the centre with a wreath engraved with initials, 155g, 16cm diameter

**R3 000 – 4 000**

228

**A canteen of German silver flatware, retailed by McPherson Brothers, Glasgow, late 19th/early 20th century**

comprising: 12 table forks, 12 table knives, 12 table spoons, 12 fish forks, 12 fish knives, 12 dessert forks, 12 dessert spoons, 12 teaspoons, 3570g, contained in a wooden canteen; and four electroplate knife-rests (100)

**R25 000 – 35 000**

229

**A Continental silver and enamel vesta case, maker's mark FBR, with import marks for London, 1928**

rectangular, the hinged cover enamelled and painted with an Arabian scene, the reverse with engine-turned decoration, 6cm wide

**R2 500 – 3 500**



230

part lot

230

**An assembled set of American silver 'Kings' pattern flatware, Gorham, with import marks for Birmingham, 1904-1905**

comprising: 6 table forks, 6 table spoons, 6 dessert forks, 6 dessert spoons, 4 teaspoons, 6 coffee spoons, 2 salt spoons, a pair of carvers, a pair of fish servers, a soup ladle, a sauce ladle, a pickle fork, a pair of sugar tongs and a butter knife, 2210g, 6 table knives and 6 dessert knives; and an assembled set of Kings pattern electroplate flatware, various makers, including Walker & Hall, late 19th century, comprising: 6 dinner forks, 6 dinner knives,

12 soup spoons, 12 fish forks, 12 fish knives, 6 dessert forks, 6 dessert knives, 6 dessert spoons, 12 ice-cream spoons, 12 cake forks, 4 teaspoons, 6 coffee spoons, 6 serving spoons, a pair of salad servers, a pair of carvers and a steel, a butter knife, a bread knife and a cake slice; contained in an oak brass-bound canteen, rectangular, the top inset with a brass plaque engraved with the initials JHM, 30cm high, 63cm wide, 46cm deep (172)

**R24 000 – 30 000**

**PROVENANCE**

Johannes Henoch Marais (1851-1915). See lot 225 in this sale for more details



231

**Six Chinese silver bowls, Luen Hing, Shanghai, circa 1910**

each applied with two dragons, 1070g, 11,5cm diameter (6)

R5 000 – 7 000

232

**A George II silver caster, possibly Samuel Wood, London, 1754**

the body *later* chased and moulded with foliage and c-scrolls enclosing a vacant cartouche, with moulded girdle, the detachable pierced cover with urn-shaped finial, on a spreading circular footrim, 190g, 17,5cm high

R3 000 – 4 000

233

**A George II silver salver, W & R Peaston, London, 1757**

with scroll and shell rim, on three stepped pad feet, the reverse engraved W \* P, 425g, 22,2cm diameter

R4 000 – 6 000

234

**A Scottish silver salver, Robert Lowe, Edinburgh, 1756**

circular, the cavetto engraved with flowerheads and c-scrolls, the rim with acanthus-and-shell border, raised on three pad feet, 820g, 29cm diameter

R7 000 – 9 000

235

**A George III silver coffee pot, William Shaw & William Priest, London, 1760**

chased and moulded with c-scrolls, floral sprays and fluting enclosing a vacant cartouche on either side, on a spreading footrim, the hinged domed cover with conforming decoration and acorn finial, with a *later* wooden double c-scroll handle, 795g all in, 25cm high

R12 000 – 15 000



234



235

236

**A George III silver waiter,**  
**Ebenezer Coker, London, 1760**  
circular, with shell and scroll border,  
the centre engraved with a crest, on  
three stepped pad feet, 225g,  
17cm diameter

R4 000 – 6 000

237

**A near pair of George III silver**  
**salts, Edward Wood, London,**  
**1776, the other maker's mark**  
**worn, London, 1777**  
each bulbous body chased and  
moulded with foliage and lion-masks,  
with gadrooned rim, on three paw  
feet, the underside engraved with  
a crest, with *later* blue glass liners,  
gilt interior, *one with scratch weight*  
*7:13, 425g, 8cm diameter;* and two  
Continental mustard spoons, moulded  
with scrolling foliage, 20g (4)

R5 000 – 7 000

238

**A George III silver covered jug,**  
**Hester Bateman, London, 1784**  
the body engraved with an armorial,  
on a beaded circular footrim, the cover  
with pineapple finial, the scroll handle  
applied with basket weave, 745g,  
32cm high

R15 000 – 20 000



236



238



240

239

**A George III silver salver,  
John Crouch I & Thomas  
Hannam, London, 1788**

shaped circular with gadrooned rim,  
the body chased and engraved with  
scrolling foliage, on three pad feet,  
375g, 20cm diameter

R4 000 – 6 000

240

**A George III silver salver,  
John Crouch I & Thomas  
Hannam, London, 1795**

the rim with shells, leaves and  
scrolls, the body chased and engraved  
with c-scrolls and flowerheads, on  
four foliate and shell feet, 2600g,  
50cm diameter

R18 000 – 24 000

241

**A George III silver two-handled  
entrée dish, stand and burner,  
J Wakelin & R Garrard,  
London, 1796**

the oval cover engraved with the  
initials 'JM' above a crest, applied with  
a central carrying-handle, the stand  
with x-shaped stretcher centred by an  
oval burner, raised on four hoof feet,  
1495g, 38cm wide over handles

R12 000 – 15 000

242

**A pair of George III silver wine  
coasters, George Smith &  
Thomas Hayter, London, 1799**

each engraved and pierced with swags,  
with wavy rim and turned wooden  
base, 13cm diameter (2)

R12 000 – 15 000



241



242



243

243

**A George III silver tankard,  
Peter, Ann and William Bateman,  
London, 1800**

the body engraved with a vacant  
cartouche, on a spreading foot, with leaf-  
capped double c-scroll handle, 350g,  
13cm high

R2 500 – 3 000



244

**A George III silver two-handled tray, John Robbins, Sheffield, 1814**

the centre engraved with an armorial enclosed by acanthus leaves and flowerheads, gadrooned rim, with conforming handles, 3385g, 71,5cm wide over handles

**R30 000 – 40 000**

245

**A George IV silver assembled three-piece tea service, J E Terry & Co and George John Richards, London, 1821–1844**

comprising: a teapot, milk jug and a two-handled sugar basin, each piece engraved and moulded with c-scrolls and foliage enclosing a crest, with leaf-capped scroll handles, the teapot with domed cover and foliate finial, the milk jug and sugar basin with gilt interior, 1530g, the teapot 18,5cm high (3)

**R6 000 – 8 000**

246

**A George IV silver tea kettle-on-stand and burner, Paul Storr, London, 1824**

the pear-shaped body chased and moulded with flowerheads and scrolls enclosing a vacant cartouche on either side, the hinged cover with foliate finial, the swing-handle with acanthus leaves and anthemion, the stand with pierced apron, on three cabriole legs with shell feet united by a central burner, the kettle fitted with cylindrical insulator, with *later* key, 3795g, 44cm high

**R60 000 – 80 000**

244



246



247

**A pair of George IV silver plates,  
Edward Farrell, London, 1824**

the circular borders moulded with panels of fruit,  
berries and masks, the centre engraved with a crest,  
780g, 26cm diameter (2)

**R12 000 – 15 000**

**LITERATURE**

cf. Peter Waldron, *The Price Guide to Antique Silver*,  
Antique Collectors' Club Ltd, Woodbridge, Suffolk, 2001,  
page 130, where a similar example is illustrated

248

**A set of George IV Thread-and-Shell silver  
flatware, William Chawner, London, 1824**

comprising: 12 table forks, 12 table spoons, 12 dessert  
forks, 12 dessert spoons, 12 teaspoons, 2565g; and 12  
table knives and 12 dessert knives, William Comyns &  
Sons Ltd, London, 1965 - 1970, en suite (84)

**R25 000 – 30 000**

249

**A George IV silver inkstand, J & T Settle,  
Sheffield, 1826**

rectangular with gadrooned, shell and foliate border,  
fitted with a pair of silver-mounted glass ink bottles  
flanking a covered wafer box, with pen depressions  
on either side, on four paw feet, *one ink bottle with  
associated cover*, 665g, 25cm wide

**R6 000 – 8 000**

250

**A William IV silver-gilt three-piece tea  
service, Benjamin Smith, London, 1830**

comprising: a teapot, milk jug and sugar basin, each  
piece moulded in relief with panels of flowerheads  
heightened with a rose, a daffodil and a lily, on a wavy  
spreading foliate foot, acanthus-leaf-capped C-scroll  
handles, the teapot with hinged cover and flowerhead  
finial, 2285g, *the teapot 16,5cm high* (3)

**R20 000 – 30 000** (*illustrated on the following page*)



247



248

part lot



249



250



251

251

**A Victorian silver four-piece tea and coffee service, Charles Reily & George Storer, London, 1842–1843**

comprising: a teapot, coffee pot, milk jug and two-handled sugar basin, each piece chased and engraved with panels of scrolls, foliage and diaper work, enclosing a crest on the front and the initial 'R' on the reverse, with leaf-capped double c-scroll handle, the teapot and coffee pot with a flowerhead and leaf finial, the milk jug and sugar basin with gilt interior, on four scroll feet, 2370g, the coffee pot 24cm high (4)

**R10 000 – 15 000**

**PROVENANCE**

The Garlick family, Graceland, St James

252

**A Victorian silver mustard pot, George Frederick Pinnell, London, 1846**

the pierced panels with c-scrolls, the domed cover with a crest, with foliate thumbpiece and double c-scroll handle, later blue glass liner, 125g, 9cm high; another, James Edwards, London, 1848, the pierced body enclosing a cartouche with the initials 'JJS', the domed cover engraved with scrolling foliage and with flowerhead finial, with pierced thumbpiece and scroll handle, later blue glass liner, 105g, 7cm high; a George III silver mustard spoon, George Smith II & Thomas Hayter, London, 1802, with gilt bowl, 7g; and an electroplate example (4)

**R4 000 – 6 000**

253

**A Victorian silver salver, Daniel & Charles Houle, London, 1859**

circular, the body with radiating panels of architectural motifs enclosing the inscription, "PRESENTED TO COLONEL GODFREY THOMAS GREENE, BENGAL ENGINEERS, Director OF Engineering AND Architectural Works TO THE ADMIRALTY by the Members of his Department. IN VERY GRATEFUL RECOGNITION OF HIS ABLE ADVOCACY OF THEIR CLAIMS, and of his continued exertions on their behalf. Resulting in the ORDER IN COUNCIL of 3rd MARCH 1859 WHICH ADMITTED THEM TO THE ADVANTAGES ENJOYED BY Established Officers of HM Civil Service", with a rope border, on three shell and scroll feet, 2500g, 46,5cm diameter

**R15 000 – 20 000**



254

**A Victorian silver-gilt-mounted travelling dressing-table set, J Vander, London, 1866**

rectangular, the leather-lined interior fitted with seven glass bottles, three covered boxes, nail and medicine accoutrements, each moulded with the initials ACD, the side with a secret drawer enclosing two ivory-backed hairbrushes, a clothes-brush, an ivory glove-stretcher and a covered box, the front with a velvet-lined jewellery drawer, contained in a brass-bound simulated coromandel case, *380g of weighable silver, 21cm high, 34cm wide*

**R8 000 – 10 000**

255

**A Victorian silver-mounted frame, Edward Beresford, London, 1884**

pierced with scrolling foliage and putti holding swags, *some distress, 36cm high*; a silver-mounted frame, Boots Pure Drug Company, Birmingham, date mark rubbed, moulded with scrolling foliage, headed by a vacant cartouche, *some distress, 19,5cm high*; a George V silver-mounted frame, maker's mark indistinct, Chester, possibly 1919, *some distress, 16,5cm high*; and another, A Brown & Co, Birmingham, 1902, *with damage, 10cm high* (4)

**R2 500 – 3 500**

256

**An Edward VII silver-mounted Art Nouveau frame, A & J Zimmerman, Birmingham, 1902**

circular, with scrolling foliage headed by a vacant cartouche, *21,5cm high*; and an Edward VII silver-mounted frame, Boots Pure Drug Company, Birmingham, 1903, square with circular aperture, *8cm high*; and another, marks rubbed, rectangular, *10cm high* (3)

**R3 000 – 3 500**

257

**An Edward VII silver-mounted frame, maker's mark indistinct, Birmingham, 1904**

heart-shaped, *distressed, 20cm high*; a smaller example, H Matthews, Birmingham, 1900, similar, *some distress, 9,5cm high*; and another, E J Houlston, Birmingham, 1906, square, *9cm high* (3)

**R1 400 – 1 600**

258

**An Edward VII silver-mounted Art Nouveau frame, W I Broadway & Co Ltd, Birmingham, 1906**

rectangular, with scrolling foliage headed by a vacant cartouche, *some distress, 30cm high*; and another, John Bull Ltd, London, 1987, *some distress, 17cm high* (2)

**R2 000 – 3 000**

259

**A George V silver-mounted frame, possibly H Matthews, Birmingham, 1911**

rectangular, with guilloche border, *22cm high*; and another, maker's mark rubbed, Birmingham, 1914, *with dents, 31cm high* (2)

**R3 000 – 4 000**



254

260

**A George V silver-mounted frame, maker's mark rubbed, Birmingham, 1912**

rectangular, with foliate borders headed by a vacant cartouche, *distressed*, 30cm high; an Edward VII silver-mounted frame, Green & Cadbury Ltd, Birmingham, 1907, moulded with ribbons, swags and a pair of vacant cartouches, 22,5cm high; and another, 1913, similar, 24cm high (3)

R4 500 – 6 000

261

**A silver-mounted frame, DR & S, Birmingham, 1993**

rectangular with canted corners, moulded with floral sprays headed by a vacant cartouche, 30cm high, and a pair of George V examples, H Matthews, Birmingham, 1911, each with scrolling foliage headed by a vacant cartouche, *with distress*, 21cm high (3)

R3 000 – 4 000

262

**A Victorian silver novelty inkwell, maker's marks rubbed, London, 1894**

modelled as a French bulldog, the hinged cover set with glass eyes, the base of the square-shaped inkwell cut with printies, 13,5 high

R2 000 – 3 000

263

**A Victorian silver and glass oil lamp, Mappin & Webb, Sheffield, 1894**

with Corinthian column, cut-glass reservoir, funnel and globe, *now fitted for electricity*, 75cm high

R8 000 – 10 000



264

264

**A Victorian silver-gilt Arts and Crafts bowl, Charles Robert Ashbee, London, 1896**

the hammered lobed interior forming a flowerhead, the sides pierced with branches and fruit, with domed base, 415g, 20cm diameter

R60 000 – 80 000

**LITERATURE**

cf. Peter Waldron, *The Price Guide to Antique Silver*, Antique Collectors' Club Ltd, Woodbridge, Suffolk, 2001, page 120 where a similar example is illustrated

265

**A Victorian silver-mounted cut-glass lemonade jug, Mappin & Webb, Sheffield, 1898**

the hinged cover with ball finial, the shoulder engraved with initials, the interior with a silver-mounted glass cylinder, the tapering body cut with panels of printies and lozenges, with star-cut base, 30cm high

R6 000 – 8 000

266

**A late Victorian silver  
inkstand, Joseph Rogers &  
Sons, Sheffield, 1900**

rectangular, with pierced three-  
quarter gallery, fitted with a pair  
of silver-mounted glass ink bottles  
flanking a covered wafer box, with pen  
depression, on pierced acanthus-leaf  
and scroll feet, 1280g, 30,5cm wide

R9 000 – 12 000

267

**An Edward VII silver-mounted  
claret jug, Goldsmiths &  
Silversmiths Co Ltd, London,  
1902**

with three-leaf clover thumbpiece,  
bulbous body, on a circular foot with  
star-cut base, 20cm high

R4 000 – 6 000

268

**A pair of Edward VII silver  
candlesticks. D & M Davis,  
Sheffield, 1905**

each stem moulded with rams'  
heads above a swag, the sconce with  
ribbons and swags, with detachable  
beaded nozzle, on a square base with  
alternating urns and acanthus leaves,  
*loaded*, 31cm high (2)

R10 000 – 15 000

269

**An Edwardian silver hedgehog  
pin cushion, Levi & Salamon,  
Birmingham, 1905**

4,5cm high

R900 – 1 200



266

270

**A pair of Edward VII silver  
candlesticks, H Matthews,  
Birmingham, 1908**

each tapering cylindrical fluted stem  
above an oval base with conforming  
decoration, with fluted vase-shaped  
sconce and detachable nozzle, *loaded*,  
29cm high (2)

R6 000 – 8 000

271

**A George V silver box, possibly  
A & J Zimmerman Ltd,  
Birmingham, 1912**

rectangular, with velvet-lined interior,  
28cm wide

R4 000 – 6 000

272

**A George V silver salver, Atkin  
Brothers, Sheffield, 1915**

the rim with c-scrolls and shells, on three  
acanthus-leaf and ball feet, 2035g,  
44cm diameter

R12 000 – 15 000

273

**A George V silver Art Deco  
pedestal bowl, H Clifford Davis  
Ltd, Birmingham, 1934**

engraved with geometric scrolls, 465g,  
24cm diameter

R4 000 – 6 000





274

274

**A George VI silver cigar box, Fortnum & Mason, London, 1937**

rectangular with all-over engine-turned decoration, the inside cover inscribed "PRESENTED TO SIR JULIEN CAHN BART., JP. ON HIS RETIREMENT AS THEIR CHAIRMAN & MANAGING DIRECTOR BY HIS SUPERVISORS, MANAGERS AND STAFF AS A TOKEN OF THEIR HIGH APPRECIATION AND AFFECTIONATE ESTEEM OCTOBER 2ND 1943", cedar-lined interior *lacking partitions*, 38cm wide

**R30 000 – 40 000**

Sir Julien Cahn (1882-1884) was an entrepreneur, philanthropist and supporter of cricket. He expanded the Nottingham Furnishing Company, founded by his father, to the extent that his Jays and Campbells stores were to be found in most major towns across Britain. This cigar box was presented to him on his retirement in 1943, having sold out to Great Universal Stores.



278

part lot

275

**A George VI silver two-handled tray, makers' mark K & L, Birmingham, 1938**

octagonal, the centre engraved with a 'C', the sides with two detachable ebonised composition handles, 1680g, 52cm wide over handles

**R10 000 – 15 000**

276

**A George VI silver four-piece tea and coffee service, E Viners, Sheffield, 1947-1948**

comprising: a teapot, coffee pot, milk jug and a two-handled sugar basin, each piece engraved with the initial 'J'; the teapot and coffee pot with ivory harp-shaped handle and finial, 1770g *all in*, the coffee pot 15,5cm high; and an electroplate two-handled tray, with reeded rim, 58,5cm wide (5)

**R12 000 – 15 000**

277

**A silver cigarette box, Deakin & Francis Ltd, Birmingham, 1954**

rectangular, the hinged cover with engine-turned decoration and 14ct inserts, cedar-lined interior, on four stepped feet, 17,5cm wide

**R2 000 – 3 000**

278

**An assembled part-set of silver 'King's' pattern flatware, E Viners, Sheffield, 1954-1966**

comprising: 13 table forks, 15 table knives, 13 soup spoons, 13 fish forks, 13 fish knives, 13 dessert forks, 13 dessert knives, 14 dessert spoons, 13 ice-cream spoons, 12 cake forks, 12 fruit forks, 12 fruit knives, 12 teaspoons, 12 coffee spoons, a bread knife, a pair of carvers, a pair of fish servers, a ladle, 4 serving spoons, 2 butter knives and a condiment spoon, 7650g (193)

**R50 000 – 70 000**



281 part lot



284



285

279

**A silver salver, E Viners, Sheffield, 1958**

with shaped rim, on three scroll feet, 815g, 31,5cm diameter

**R5 000 – 6 000**

280

**A silver pedestal dish, Mappin & Webb, Sheffield, 1965**

circular, engraved with bands of petals, on a conforming spreading foot, 455g, 23cm diameter

**R3 000 – 4 000**

281

**A Chinese blue and white oval dish, Qing Dynasty, Qianlong (1736-1795)**

the centre painted with a pair of peacocks in a landscape, enclosed by cell-diaper and butterfly borders, *chips to rim*, 33,5cm wide; and another, octagonal, painted with Buddhist attributes within a formal garden, *chips*, 35cm wide (2)

**R4 000 – 6 000**

282

**Nine Chinese blue and white soup plates, Qing Dynasty, Qianlong (1736-1795)**

octagonal, each painted with peonies and floral sprays within a spearhead and diaper border, *rim chips and hairline cracks*, 22,5cm diameter (9)

**R2 000 – 3 000**

283

**A set of six Chinese blue and white teabowls and six saucers, Qing Dynasty, Kangxi, 17th century**

each painted with the figure of a small boy within a foliate rondel, with wavy border, *fritting chips to rims, underglaze-blue double-ring mark*; and two saucer dishes, each painted with a maiden and a small child, with cell diaper borders, *hairline crack and fritting chips, underglaze-blue double-ring and six-character mark* (14)

**R2 000 – 3 000**

284

**A Chinese blue and white circular dish, Qing Dynasty, Qianlong (1736-1795)**

the centre painted with two birds above a balustraded garden with peonies and lilies enclosed by cell-diaper borders, 37,5cm diameter

**R3 000 – 4 000**

285

**A Chinese blue and white circular dish, Qing Dynasty, Qianlong (1736-1795)**

the centre painted with a maiden standing before a willow tree, her attendant before a balustrade, within butterfly and cell diaper borders, 41,5cm diameter

**R5 000 – 7 000**

286

**A Chinese blue and white vase,  
Qing Dynasty, 19th century**

of baluster outline, decorated with  
prunus blossom, 26cm high, with  
associated wooden cover and stand;  
and a jardinière, similar, 23,5cm high,  
with associated wooden stand (2)

R9 000 – 12 000

287

**A Chinese cinnabar lacquer  
table screen and stand, late  
19th century**

the circular screen carved with  
small boys at various pursuits, *minor  
chipping and loss*, 12,5cm diameter, the  
hardwood stand with silver wire inlay  
and carved with a pair of dragons, on  
toupie feet, 11cm high

R5 000 – 7 000

288

**A Chinese carved ivory tusk,  
late 19th century**

carved with the figure of an Immortal  
and Liu Hai sporting with his three-  
legged toad, on a flowering pine tree,  
*small area with loss*, 21cm long

R12 000 – 15 000

289

**A Chinese carved ivory  
Medicine Doll, circa 1900**

the reclining nude figure resting in  
a clam shell carved with a terrapin, a  
frog, a snake, a crab and waterlilies,  
21cm long, on a carved wooden stand

R5 000 – 7 000



288



287



289



291



290

**A Chinese bronze two-handled vase, 19th century** of baluster outline, the shoulder with a band of taotie masks, with mask headed handles, on a circular base, *25cm high*

**R4 000 – 6 000**

291

**A Japanese bronze figure of an elephant, Meiji period (1868–1912), in the style of Genryusai Seiya and signed Tsunemitsu** the enraged elephant being attacked by two tigers, one clawing his back, the other being trampled underfoot, with ivory tusks, the tigers with glass eyes, signed with seal, *46cm high*, with wooden stand, *5cm high*

**R30 000 – 35 000**

292

**A Satsuma earthenware dish, signed Kozan, Meiji Period** finely painted in enamels and gilt with figures enclosed by formal borders, the reverse with midnight-blue ground and gilt highlights, *signed*, *22,5cm diameter*

**R9 000 – 12 000**

293

**A Chinese hardwood altar table, 19th century** the rectangular top above a pierced frieze, on square-section legs with incurved feet, *86cm high, 35,5cm deep, 224,5cm long*

**R40 000 – 50 000**



292 detail



293

294

**A walnut secretaire-cabinet,  
early 18th century**

with moulded cornice above a pair  
of panelled doors enclosing an  
arrangement of short drawers and  
one long drawer, the lower part with a  
fitted secretaire drawer and three long  
graduated drawers, on bracket feet,  
*restorations, 203cm high, 104cm wide,  
48,5cm deep*

R60 000 – 80 000



295

**A Regency mahogany and ebonized folio cabinet, circa 1820**

in the manner of George Oakley, the shaped rectangular top set to the front with four reeded columns flanking a double lancet panelled door, enclosing a shelf, one side fitted with a pair of long drawers, each side carved with lion-headed masks, the conforming plinth base fitted with a deep frieze drawer, on castors, partially inlaid with stylized leaf decoration, ebonized mouldings and boxwood stringing, 105cm high, 112cm wide, 80cm deep

**R60 000 – 80 000**

George Oakley (1773-1840) was one of the leading cabinetmakers of the Regency period and specialised in ebony and brass-inlay work, producing furniture in the fashionable Grecian taste. His 1802 trade card advertises 'A magazine of general and superb upholstery and cabinet furniture'. With extensive premises in Bond Street and the City, he undertook commissions for a distinguished circle of patrons, the foremost of whom was the Prince Regent at Carlton House. During a career which lasted half a century, one of his most celebrated commissions was for Charles Madryll Cheere of Papworth H Cambridgeshire, where he supplied furniture with many of the characteristics and combinations including foliate motifs, 'ebony' stringing and reeded supports, as to be found on this offered lot. His reputation spread abroad where an 1804 newspaper article, published in Weimar, Germany, stated: 'all people with taste buy their furniture at Oakley's'. He worked in partnership with various cabinet-makers, including Henry Kettle, George Shackleton and John Evans.

**PROVENANCE**

Esmond Stirling, son of John and Susan Stirling, Keir House, Stirling, Perthshire, Scotland. This piece was probably from Keir House, the ancestral seat of The Stirlings of Keir. The family sold Keir House in 1975.



open





296

**An Irish Regency mahogany  
serving table, circa 1820**

in the manner of Morgans of Dublin,  
with three-quarter shaped gallery carved  
with rondels, the inverted breakfront top  
with outset corners and spiral-reeded  
border enclosing a pair of frieze drawers,  
four turned and spiral-reeded front legs  
headed by acanthus foliage, on paw  
feet, the rear supports with turned feet,  
113cm high, 214cm wide, 69cm deep

**R80 000 – 100 000**

cf. Lewis and Anthony Morgan, of 21 Henry  
Street, Dublin, were a respected early  
19th century firm of cabinetmakers and  
upholsterers. They supplied furniture for the  
Provost's House, Trinity College, Dublin, in  
1821, including a dining table, chairs, a wine  
cooler and a teapoy all with spiral-reeded  
legs.

D Guinness and W Ryan, *Irish Houses and  
Castles*, London, 1971, page 122, illustrated



297

**An Irish Killarney arbutus  
marquetry games table, early  
19th century**

the rectangular top inlaid with an oval cartouche of Muckross Abbey flanked by ferns within a fern, foliate and berry border, enclosing games boards for backgammon, chess and cribbage within shamrock borders and with roundels depicting The Abbey ruins, the frieze inlaid with a pair of dolphins, acorns and foliage, the tapering octagonal column inlaid with shamrocks, on a shaped plinth base similarly inlaid, raised on paw feet, *76,5cm high, 80cm wide, 42,5cm deep*

**R80 000 – 100 000**

Muckross Abbey is one of the major ecclesiastical sites found in the Killarney National Park, County Kerry, Ireland. Founded in 1448 as a Franciscan friary for the Observantine Franciscans, it has had a violent history and has been damaged and reconstructed many times. Today The Abbey is largely roofless and in the middle of the courtyard grows an ancient yew tree, said traditionally to be as old as The Abbey. It was the burial place of local chieftans and is still in use today.



detail



detail





298

298

**A mahogany console table,  
possibly Irish, early 19th century**

the serpentine-shaped top with  
gadroned border above a foliate- and  
scroll-carved frieze, on massive cabriole  
legs headed by acanthus-leaf carving,  
with paw feet, *86cm high, 210cm long,  
59,5cm wide*

**R50 000 – 60 000**

299

**A William IV mahogany armchair**

in the manner of Gillows, the curved  
button-back with reeded side supports,  
downcurved arms with fan and foliate  
paterae, on S-shaped legs with castors

**R8 000 – 10 000**



299





300

**A Regency mahogany side table, circa 1820**

in the manner of Gillows, the rectangular top above a pair of drawers each bordered by moulding, on ring-turned fluted legs, 79cm high, 106,5cm wide, 45,5cm deep

R15 000 – 20 000

301

**A late Regency rosewood sofa table**

the rectangular top with rounded corners above a pair of frieze drawers, shaped end supports carved with foliate paterae joined by a carved stretcher, on paw feet headed by lotus leaves, later castors, 73cm high, 140cm long, 74cm deep

R20 000 – 30 000





302

302

**A pair of Regency painted armchairs**

the top rails painted with leaves and berries above four splats, caned seats, on ring-turned legs (2)

R7 000 – 9 000



303

303

**A George III style mahogany and close-nailed leather-upholstered library bergère, 19th century**

with buttoned squab cushion, on ring-turned legs

R8 000 – 10 000



304

304

**A late Regency rosewood sofa table, circa 1830**

the rectangular top above a pair of frieze drawers, with carved side supports on foliate-headed paw feet and castors, *one drawer with retailer's label, David Heller, Cape Town, 74,5cm high, 146cm wide, 68cm deep*

R18 000 – 24 000

305

**A Regency rosewood book carrier, 19th century**

with pierced foliate and scroll three-quarter fretwork gallery incorporating carrying-handles, raised on bun feet, *restorations*, 19cm high, 42cm wide, 28cm deep

R5 000 – 7 000

306

**A Regency rosewood brass-mounted book carrier**

with three-quarter gallery, the sides incorporating carrying-handles, on a moulded base, 15cm high, 61cm wide, 25cm deep

R5 000 – 7 000

307

**A George IV rosewood book carrier**

the three-quarter solid gallery with a pair of turned grip handles, raised on *later* triangular supports, *restorations*, 14,5cm high, 46cm wide, 25cm deep

R3 000 – 4 000

308

**A George III mahogany corner chair**

the top rail with shaped cresting above a pair of pierced splats, drop-in seat, shaped apron, on square-section ribbed and chamfered legs

R5 000 – 7 000

309

**A mahogany partners' desk, 19th century**

the rectangular gilt-tooled green leather-lined top above three frieze drawers to each side, each pedestal with three graduated drawers to the front and a single door to the reverse, on a plinth base, *the lock-plates by Hobbs*, 80cm high, 180cm wide, 117cm deep

R40 000 – 60 000



309



310

**A Victorian mahogany armchair**

with curved top rail and downswept scroll arm supports, red leather seat, on ring-turned legs with brass castors

R2 000 – 3 000

311

**A Victorian Aesthetic Movement ebonized and parcel-gilt card table by James Shoolbred & Co, late 19th century**

the rectangular top enclosing a baize-lined playing surface, on fluted and ring-turned legs joined by a conforming stretcher, outswept feet with porcelain castors, *enamel plaque James Shoolbred & Co, Tottenham House, Tottenham Court Road, London, 75cm high, 86,5cm wide, 43cm deep*

R6 000 – 8 000

312

**A George III style mahogany and close-nailed leather-upholstered wingback armchair**

with squab cushion, on square-section legs with brass cappings and castors

R10 000 – 12 000

313

**A Victorian mahogany breakfront bookcase**

the *later* cornice carved with a band of foliage above four glazed cupboards enclosing three damask-lined shelves, the lower half with four panelled doors enclosing shelves, on a plinth base, *restorations, 236cm high, 214cm wide, 55cm deep*

R20 000 – 30 000

314

**A Victorian mahogany sofa table**

the rectangular crossbanded twin-flap top above a pair of frieze drawers, stile supports on paw feet joined by a turned stretcher, *formerly with castors, 71cm high, 72cm deep, 160cm wide open*

R15 000 – 20 000



311



312

315

**A George III style mahogany and close-nailed leather-upholstered wingback armchair**

with shaped buttoned back, wings and arm supports, squab cushion, fluted front legs joined by H-shaped stretchers

R10 000 – 12 000



315



316

316

**A Victorian walnut canterbury, circa 1860**

the demi-lune shaped top on twist-turned columnar supports, the lower shelf with a conforming pierced gallery, three divisions, and a frieze drawer, on toupie feet with brass cappings and porcelain castors, 97cm high, 107cm wide, 42,5cm deep

R8 000 – 10 000



317

317

**A pair of George III style mahogany and close-nailed leather-upholstered wingback armchairs**

each with buttoned squab cushion, on fluted square-section front legs joined by H-shaped stretchers (2)

R15 000 – 20 000



318

318

**A George III style satinwood and painted circular occasional table, circa 1910**

the centre painted with a rondel of flowerheads and palmettes bordered by urns, the outer rim painted with green ribbons and swags centred by red flowerheads, on four turned and fluted supports with splayed legs, brass cappings and castors, 73cm high, 89cm diameter

R15 000 – 20 000



319

**A Victorian mahogany marble-topped console table**

the *later* rectangular white and grey-veined marble top with rounded corners, on leaf- and scroll-carved cabriole legs raised on paw and octagonal block feet, 95cm high, 127,5cm wide, 64cm deep

R10 000 – 15 000



319

320

**An early Victorian mahogany extending dining table**

the rounded rectangular top above a plain frieze, with five leaves, on six ring-turned baluster and fluted legs, brass cappings and castors, the *mechanism signed Cope & Colinson, 2nd Jan 1840*, 73cm high, 153cm wide, 454cm long fully extended, 153cm diameter closed

R30 000 – 40 000



320



321

321

**A Victorian mahogany partners' writing table**

the rectangular top inset with a leather writing surface, the front and reverse set with three pull-out leather-lined writing slides above three drawers, on ring-turned baluster legs with brass cappings and castors, *80cm high, 95cm deep, 168cm wide*

R20 000 – 30 000

322

**A near pair of George III style mahogany and close-nailed brown leather-upholstered library armchairs**

on square-section legs joined by H-shaped stretchers (2)

R12 000 – 15 000



322

323

**A Cape teak side table, late 18th century**

the rectangular two-plank top with re-entrant corners above a frieze drawer, with wavy apron, on cabriole legs with pointed pad feet, 71cm high, 105cm wide, 64cm deep

R60 000 – 80 000



323

324

**A fruitwood tolletjies chair, 19th century**

the spindled back with baluster-turned side supports, riempie seat, on tapering legs joined by double side stretchers, on pad feet, *restorations and replacements*; and a stinkwood example, 19th century, with three horizontal top rails, riempie seat, on ring-turned legs joined by side stretchers (2)

R9 000 – 12 000

325

**A South African stinkwood dining table, designed by Sir Herbert Baker, early 20th century**

the rectangular cleated top flanked by a pair of oval D-ends above a wavy apron, on square-section legs and vase-shaped supports, with bun feet joined by wavy stretchers, 77cm high, 242cm long fully extended, 130cm wide

R20 000 – 30 000



325



326

A beech and pine dining table,  
formerly the work table of Kurt  
Jobst, South African Goldsmith,  
Silversmith and Art Metal Worker  
(1905-1971)

the rectangular five-plank peg top above  
a plain frieze set with two drawers, on  
square-section legs joined by stretchers,  
76cm high, 180cm long, 97cm wide

R15 000 – 20 000

327

A Dutch Colonial teak rusbank,  
19th century

the top rail carved with flowers, scrolls,  
foliage and a shell above a spindled  
backrest, with leaf-carved and scroll arm  
supports, riempie seat, on baluster-turned  
legs joined by stretchers, with bun feet,  
223cm long

R60 000 – 80 000

328

A Dutch Delft blue and white wall  
cistern, early 18th century

with double dolphin and shell backplate,  
the bulbous ribbed body painted with  
figures taking tea in an interior, the front  
with mask and metal spigot, raised on a  
semi-circular foot, *painted initials I and K in  
underglaze-blue, restored, lacking cover and  
basin, 44cm high*

R5 000 – 7 000



327

329

**A pair of Dutch Delft blue and white and polychrome enamel dishes, 19th century**

one painted with an allegorical scene of Europa and the Bull, the other with a couple dancing attended by a musician, enclosed by enamelled foliate borders and vignettes, *rim chip, one with underglaze-blue initials WVB, the other with painted numerals, 42cm diameter (2)*

R6 000 – 8 000

330

**A pair of Dutch Delft iron-red, blue and white vases, 19th century**

of double-gourd octagonal outline, painted with panels of riverscapes and cartouches of flowers, *painted initials AR in iron-red, 27cm high*; and a Delft blue and white jar and cover, 19th century, baluster hexagonal, painted with birds and landscapes, the cover with a *dog of fo* finial, *fritting chips, 25cm high (3)*

R8 000 – 10 000

331

**A Dutch walnut armoire, early 19th century**

the arched cornice centred by shell-carved key-block, above a pair of panelled doors enclosing an arrangement of five drawers and shelves, the lower half with a pair of short drawers and a pair of long bombé drawers, on hairy paw feet, *251cm high, 190cm wide, 62cm deep*

R50 000 – 70 000



331



332

**An oak kist, 18th century**

the domed hinged top enclosing a hinged glove compartment, the front carved 'F. MARGREA. HELMANS ANNO 1756' above two cushion-shaped panels inlaid with a compass star motif flanked by half-turned spindles, the sides with iron carrying-handles, on bun feet, 54,5cm high, 111,5cm wide, 52cm deep

R6 000 – 8 000

333

**A French mahogany and giltwood mirror, 19th century**

rectangular, with bevelled plate, the sides carved with angels, the top with *later* outset moulding, 82cm high, 52cm wide

R4 000 – 6 000

334

**A French amboyna and ebony brass-mounted travelling liqueur cabinet, 1860s**

with hinged serpentine cover and hinged sides, the interior with a removable brass tray fitted with fifteen engraved and gilt glasses and four decanters and stoppers, on brass bun feet, *one glass lacking*, 26,5cm high, 36,5cm wide

R8 000 – 12 000

335

**A Viennese rosewood and gilt-metal-mounted casket, Hollenbach (fl 1880-1895)**

the hinged cushion-shaped cover enclosing a silk-lined interior, the shaped sides applied with a pair of carrying-handles, the corners cast with seated putti, on leaf-scroll feet, *the mounts stamped Hollenbach, Wien*, 31cm high, 43,5cm wide, 36cm deep

R15 000 – 20 000



334



335





336

336

**Adolph, a cold-painted bronze and ivory figure of a dancing girl, circa 1925**

modelled lifting the hem of her dress, painted with pink and cream flowerheads against a green ground, on a green onyx pedestal base, signed, 32cm high

R15 000 – 20 000

337

**A Royal Copenhagen 'Blue Fluted' pattern part dinner service**

comprising: 12 soup plates, 24 dinner plates, 12 dessert plates, 3 oval platters, in sizes, a fruit bowl, 2 oval dishes, a vegetable tureen and cover, a soup tureen and cover, a sauceboat on fixed stand, a large circular dish, *underglaze-blue factory mark and numerals*, the largest platter 37cm wide; and a Royal Copenhagen 'Blue Fluted Lace' pattern triangular dish, 21cm wide (59)

R25 000 – 35 000



337 detail



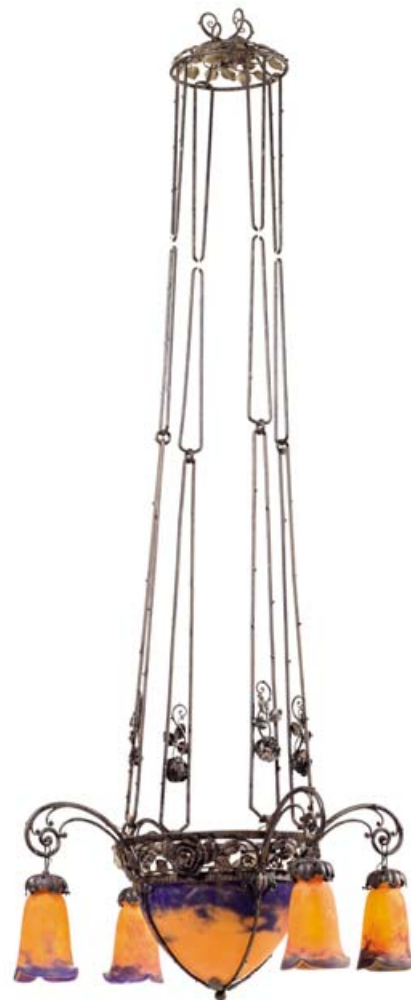
338

338

**An Italian gilt-metal and painted twenty-four-light chandelier, 19th century**

with urn-shaped basket supporting eight candle-arms, each arm with three sconces and a flowerhead, surmounted by a vase centred by a column entwined with three flower-encrusted tendrils, *one flowerhead missing, some oxidisation, 120cm high*

**R20 000 – 25 000**



339

339

**A Muller Frères Lunéville five-light ceiling lamp, circa 1900**

the mottled orange and mauve glass shades suspended to a wrought-iron frame decorated with stylized rose-heads, with four pierced linkages and circular rose, each shade acid-stencilled MULLER FRÈRES LUNÉVILLE, minor chips, *approximately 175cm high, 73cm diameter; with four additional extension links*

**R25 000 – 35 000**



340

340

A pair of rosewood and satinwood fan-shaped side tables, Alan Peters, OBE, (1933–2009), designed in 1989  
each semi-circular fluted top raised on pierced supports, inlaid with satinwood stringing, 76cm high, 40cm deep (2)

R8 000 – 10 000

341

A Ron Arad adjustable black-enamelled chrome-steel and plastic-coated sprung 'Rocking Chair', designed in 1981, for One-Off

with One-Off label

R15 000 – 18 000

342

An Eileen Gray 'Rivoli' chromium-plated steel and coral lacquer tea table, introduced 1928

with foldable top and two swivelling trays, the frame stamped *ClassiCon*, 03.93, 101cm high, 138cm wide open, 37cm deep

R8 000 – 10 000



341



342



343

A chrome-metal mounted lacquered-wood and leather-upholstered 'Transat' armchair, originally designed by Eileen Gray (1926-1930)

this model of later production

R20 000 – 25 000

344

An Angelo Brotto (1914-2002) chromium-plated steel and aluminum 'Giraffe' anglepoise floor lamp, 1970

with central column on a square-section base, 300cm high

R25 000 – 30 000

345

A rosewood extending dining table, Gordon Russell Ltd, October 1973

the rectangular top with shaped ends, on double supports with outset feet, stamped Gordon Russell Ltd, Oct. 1973. AC. 73cm high, 198cm long, 114cm wide, with two leaves, 310cm long fully extended

R25 000 – 35 000

346

A pair of Lalique 'Chasse Chiens' plates, introduced in 1914, discontinued in 1947, Marcilhac, page 699, number 3001

heightened with brown staining, signed Lalique, France, 21,5cm diameter (2)

R5 000 – 7 000







347



348



349



350

347

**A Stevens & Williams Ltd blue and green glass vase, circa 1920**  
of tapering ovoid form, 28cm high

R2 000 – 3 000

348

**A Leerdam 'Tortuga' vase, designed by Floris Meydam, 1963**  
tapering cylindrical, clear-cased, the thick-walled body internally blown in relief with lozenges encased by an olive-green ground, with amethyst rim, 24,5cm high

R4 000 – 5 000

349

**An Orrefors glass vase, attributed to Edvard Hald (1883-1980)**

ovoid, clear glass with diagonal wavy blue lines, 16,5cm high

R2 000 – 3 000

350

**A Nuutajärvi-Notsjö vase, Heikki Orvola, circa 1970**

cylindrical with slightly flared lip, opaque orange with black organic inclusions, etched signature, 25,5cm high

R4 000 – 6 000

351

**A Nuutajärvi-Notsjö 'Riippu' plaque, designed by Oiva Toikka**  
of irregular outline, clear glass moulded in relief with a branch of stylised fruit in turquoise, green, blue and mottled brown, etched signature, 28cm diameter

R2 000 – 3 000





353



354



356

352

**A Murano glass bowl, 1960s**  
circular, mottled with white swirls,  
*23,5cm diameter*

**R3 000 – 4 000**

353

**A Murano glass vase, 1960s**  
the flared ovoid body with gaping mouth,  
brick-red bands and blue vertical streaks  
on an opaque white ground, with bands  
of bubble inclusions, *34,5cm high*

**R6 000 – 8 000**

354

**A Murano 'Fasce Verticali' red  
and green glass vase, attributed  
to Salviati & Co, 1960s**  
of waisted outline, *35,5cm high*

**R10 000 – 12 000**

355

**An AVeM flower-shaped glass  
vase, 1960s**  
with coiled base, in shades of green and  
amber, *27cm high*

**R1 000 – 1 200**

356

**A Gino Vistosi white and  
amethyst glass vase, 1960s**  
cylindrical, with bands of *murrina* and  
line decoration, *26cm high*

**R8 000 – 12 000**



357

**357**  
**A Barovier & Toso 'Tessere Ambra' vase, Ercole Barovier, circa 1957**

cylindrical, composed of amber tesserae outlined in amethyst, *Barovier & Toso paper label no 16056, 31cm high*

**R35 000 – 40 000**



358

**358**

**A Barovier & Toso 'Parabolici' glass vase, Ercole Barovier, circa 1957**

ovoid body with waisted neck and flared rim composed of opaline and smoky-grey tesserae outlined in amethyst, *34cm high*

**R50 000 – 60 000**

**359**

**A Barovier & Toso 'Athena Cattedrale' glass vase, Ercole Barovier, 1964**

bucket-shaped, with diamond-shaped panels of blue, grey and opaline white murrhines, *18cm high*

**R40 000 – 50 000**



359

360

**A Barovier & Toso 'Dorico' vase,  
Ercole Barovier, circa 1960**

with elongated neck and ovoid body,  
composed of red, opaline and amethyst  
*murrina* patches, *etched signature*,  
44cm high

R50 000 – 60 000



360

361

**A 'Merletto' glass vase,  
Archimede Seguso, 1954**

of tapering ovoid outline, with bands of  
white *merletto* web interspersed with  
amethyst dots, 32,5cm high

R60 000 – 80 000



361

362

**An Aureliano Toso, 'Oriente' glass  
vase, Dino Martens, 1950s**

blown by Aldo Polo Bon, waisted  
cylindrical, with *zanfirico* canes and  
coloured glass panels, *signed Aldo Bon*,  
34cm high

R50 000 – 60 000



362





## Collection of Czechoslovakian Glass



363



364

363

**A Mstisov Glassworks  
'Rhapsody' bowl, designed by  
František Zemek**

in clear, green, blue, pink and amber,  
36cm wide

R3 000 – 4 000

### LITERATURE

Mark Hill, *Hi Sklo Lo Sklo: Post War Czech  
Glass from Masterpiece to Mass-produced*,  
2008, pages 66-67

Czechoslovak Glass Review, 1960-1963

364

**A Mstisov Glassworks  
'Pizzicato' bowl, designed by  
Hana Machovska, 1960s**

yellow, blue, pink and green, with lines  
of *bullicante*, pattern number 53532,  
11cm high

R3 000 – 4 000

### LITERATURE

Mark Hill, *Hi Sklo Lo Sklo: Post War Czech  
Glass Design from Masterpiece to Mass-  
produced*, 2008, page 53

Czechoslovak Glass Review, 1964-8



365



366



367



368

365

**A Mstisov Glassworks  
'Romana' series vase, designed by  
Hana Machovska, 1960–1961**  
blue, amber and orange, 22cm high

**R3 000 – 4 000**

**LITERATURE**

Mark Hill, *Hi Sklo Lo Sklo: Post War Czech Glass Design from Masterpiece to Mass-produced*, 2008, page 53, illustrated on back cover  
Czechoslovak Glass Review, 1964-8

366

**A Škrdlovicé Glassworks vase,  
designed by Jan Beránek**  
pink and clear glass, 18cm high

**R3 200 – 3 800**

**LITERATURE**

Mark Hill: *Hi Sklo Lo Sklo: Post War Czech Glass Design from Masterpiece to Mass-produced*, 2008, pages 27-28

367

**A Škrdlovicé Glassworks vase,  
designed by Rudolf Beránek**  
clear double-cased with blue flash, the body with central hole, 20,8cm high

**R3 000 – 4 000**

368

**A Škrdlovicé Glassworks 'Atlas'  
vase, designed by Jan Kotík,  
1955–1965**

pale amber and green, pattern number 5503//20, two minor chips to footrim, 19cm high

**R3 500 – 4 000**

**LITERATURE**

Mark Hill, *Hi Sklo Lo Sklo: Post War Czech Glass Design from Masterpiece to Mass-produced*, 2008, page 50  
Czechoslovak Glass Review, 1964-8



369



369



370



371

369

**A Škrdlovič Glassworks 'Luxus Red Core' vase, Jan Beránek**

amethyst and turquoise, 30cm high; and a pink and clear glass bowl, designed in 1964, pattern number 5954, 32cm wide (2)

**R5 000 – 7 000**

**LITERATURE**

Mark Hill, *Hi Sklo, Lo Sklo: Post War Czech Glass Design from Masterpiece to Mass-produced*, 2008, pages 27 -28

370

**A Škrdlovič Glassworks 'Propeller' vase, designed by Jan Beránek**

dark amethyst, 21,5cm high

**R3 000 – 4 000**

**LITERATURE**

Mark Hill, *Hi Sklo, Lo Sklo: Post War Czech Glass Design from Masterpiece to Mass-produced*, 2008, pages 27-28

371

**A Škrdlovič Glassworks vase, designed by František Vízner, circa 1970**

cognac coloured and clear glass with bubble inclusions, 15,8cm high

**R3 000 – 3 500**

**LITERATURE**

Mark Hill, *Hi Sklo Lo Sklo: Post War Czech Glass Design from Masterpiece to Mass-produced*, 2008, page 84  
Czechoslovak Glass Review, 1969-1

372

**A Železný Brod Glassworks vase, designed by Miloslav Klinger**

pale blue and pink, 31cm wide

**R2 000 – 2 500**

**LITERATURE**

Mark Hill, *Hi Sklo Lo Sklo: Post War Czech Glass Design from Masterpiece to Mass-produced*, 2008, page 49  
Czechoslovak Glass Review, 1988



372



373



374



375



373

A Železný Brod glassworks  
pink glass vase, Josef Cvrček (in  
association with Miloslav Klinger)  
*pattern number 70214, 27cm high*

**R3 500 – 4 000**

#### LITERATURE

Mark Hill, *Hi Sklo Lo Sklo: Post War Czech  
Glass Design from Masterpiece to Mass-  
produced*, 2008, page 47, illustrated on  
frontis

374

A Železný Brod Glassworks vase,  
designed by Miloslav Klinger  
*pale blue and grey, paper label, 27cm high*

**R3 000 – 3 500**

#### LITERATURE

Mark Hill, *Hi Sklo Lo Sklo: Post War Czech  
Glass Design from Masterpiece to Mass-  
produced*, 2008, pages 47-49

375

Two Borske Sklo vases and a  
centrepiece, designed by Josef  
Hospodka, 1960s

*each opaline, pink and green, the taller  
vase with paper label, 36cm high (3)*

**R3 500 – 4 000**

#### LITERATURE

Mark Hill, *Hi Sklo Lo Sklo: Post War Czech  
Glass Design from Masterpiece to Mass-  
produced*, 2008



376

377

378

379

376

**A Czechoslovakian glass vase,  
designed by Jaroslav Svoboda**  
blue with white *murrina*, 22cm high

**R2 000 – 2 500**

377

**A Czechoslovakian glass vase,  
designed by Jaroslav Svoboda**  
clear with red organic stipples, 12,5cm high

**R3 000 – 3 500**

378

**A Czechoslovakian glass vase,  
designed by Jaroslav Svoboda**  
pink and clear glass with *bullicante*, paper  
label, 15cm diameter

**R2 500 – 3 000**

379

**A Czechoslovakian glass vase,  
designed by Petr Hora**  
amber and pale green, the side with white  
and mauve *murrina*, 21,5cm high

**R2 500 – 3 000**

**LITERATURE**

Mark Hill, *Hi Sklo Lo Sklo: Post War Czech  
Glass Design from Masterpiece to Mass-  
produced*, 2008

380

**A Czechoslovakian glass bowl,**  
**designed by Ladislav Paleček**

blue and green, 9,5cm high; and an  
ashtray, designed by Popelník (1941-  
1980), similar, 6,5cm high (2)

R2 000 – 3 000

381

**A Bohemia Studio Art Glass**  
**vase, 1960s**

clear glass internally blown with  
*bullicante*, 20cm high

R3 500 – 4 500

382

**A German Glasfachschule**  
**Zwiesel bowl pink**

with opaline rim, engraved with the  
School's monogram and numerals  
940-1029, 32,5cm diameter

R3 000 – 4 000

383-390

No lots



380



381



382