





The Vineyard Hotel, Conference Centre,  
Newlands, Cape Town  
Monday 8 October - 12pm

**Jewellery,  
including The Vivienne  
Linder Collection**

**Lots 1-129**

# The Vivienne Linder Collection

Vivienne Linder née Adley, 21 July 1932 – 29 September 2011



Vivienne Adley—with her new plunge-line dress, as she appears in her act at a Durban nightspot.

## EYE-OPENER

VIVIENNE ADLEY is no stranger to Durban, but her new act is. Dressed in a slinky black dress with a plunging neckline, she mesmerised her first night audience at the New Mayfair Hotel with both her outfit and selection of songs.

A witty critic has referred to her as "the new Julie Andrews". Then comes an improvised version of "Blue Eyes" with

Born to a Jewish family in Durban, Vivienne Adley was educated at the Maris Stella Convent before continuing her singing and drama training at the University of Natal Durban, where she spent the next three years under the watchful eye of Elizabeth Sneddon. In 1957, having completed her degree, she continued at the Webber-Douglas School of Singing and Dramatic Art in London, where she was one of the debutantes presented to the Queen at Buckingham Palace in the summer of 1958.

After studying and performing in London for three years, Vivienne left the glitz and glamour of the West End to return to South Africa in 1960 for her first local production, *Let's Make an Opera*, staged at the Alexander Theatre, Johannesburg. The performance drew on both her singing and acting skills.

In 1961 she starred in *The King Of Diamonds*, the new musical about the life of Barney Barnato, who began his career in the musical halls of London and whom Harry Oppenheimer in the programme introduction described as the "mercurial figure from Whitechapel, whose remarkable business flair carried him from 'gags to riches'". No less a figure than Anna Neethling Pohl commended Vivienne's talent, stage personality and her soothing voice and wished her luck with her "natural and charming performance".

But her passion lay in singing. A talented chanteuse with "a sparkling voice and personality to match", she enchanted her audiences, who often gave her standing ovations as at the Hotel Edward's famous, but notoriously intimidating, *Causerie* restaurant. Those were the days of a bygone era, when an evening's outing to a restaurant usually included fine dining, quality entertainment and dancing.

'Vivacious Viv', as she was often called, was also famous for her sophisticated style, wearing glamorous evening gowns or slinky sheath dresses with plunging necklines offset by elegant jewellery, which she carried off with grace and poise. Her striking beauty and ability to manipulate her sultry voice in 'torch' songs made her a sensual and riveting performer.

Her blend of cabaret and musical comedy ensured that she was a hit with audiences. In addition to praise for her singing, she earned critical commendation for her mischievous personality and humorous patter, and was often likened to stars such as Julie Andrews and Eartha Kitt.

Vivienne's flair for accents and comedy made her popular amongst younger audiences, including those at many children's hostels, where she took time out of her busy career to do voluntary work.

Her desire to start her own family took priority over Vivienne's career when she met and married surgeon, Leslie Linder, a Londoner, in 1965. The couple had two children, Richard and Andrew, on whose behalf her collection is offered.



8 part lot





1

**Gold and enamel serpent necklace,  
mid 19th century**

designed as an articulated snake, the  
engraved royal blue enamelled head set  
with cabochon ruby eyes and decorated  
with half pearls, old-cut and rose-cut  
diamonds, with a locket attached to  
its mouth, *some enamel loss, length  
approximately 41,5cm, in an imperfect  
fitted case*

**R18 000 – 20 000**



detail

2

### Diamond ring

claw-set with a baguette diamond weighing approximately 0.80 carats, size G

R18 000 – 20 000

3

### Diamond ring

centring on a baguette-cut diamond weighing 5.3650 carats, size K

*Accompanied by a report number 120501898/83781 from E.G. Laboratory, South Africa, stating that the diamond weighing 5.3650 carats is M in colour and VS1 clarity*

R220 000 – 240 000

4

### Cultured pearl and diamond necklace

composed of a single row of cultured pearls graduated in size from approximately 2mm to 5,5mm, to an openwork clasp set with a single old-cut diamond, *length approximately 40cm*

R2 000 – 3 000

5

### Cultured pearl and diamond necklace

composed of three rows of cultured pearls graduated in size from approximately 2,5mm to 8mm, to a clasp, set with a pearl and nine old-cut diamonds, *length of shortest row approximately 38cm*

R8 000 – 10 000

2



3



6

### Cultured pearl and diamond necklace

composed of a single strand of cultured pearls graduated in size from approximately 3mm to 8mm, to a lozenge-shaped clasp set with three old-cut diamonds, *length approximately 33,5cm*

R1 500 – 2 000

7

### Diamond stick pin

*formally a sureté pin*, the arrow-shaped terminal set with an old-cut diamond; an Edwardian gold and seed pearl brooch 9 carat, crescent-shaped, applied with flowerheads and foliage, *altered*; and a circular pearl brooch set with seed pearls (3)

R2 000 – 3 000

Diamond stick pin purchased by the current owner's grandmother from C. Morsch & Co, Manufacturing Jewellers, 88 Goswell Road, ECI. in 1923

5



4





8

**8**  
**Pair of diamond ear pendants**  
 each of chandelier design, pavé-set with eight-cuts, baguette and round brilliant-cut diamonds, suspending five baguette diamond drops, *later* screw fittings (2)

**R25 000 – 35 000**



11



9

**9**  
**Pair of diamond stud earrings**  
 each claw-set with a round brilliant-cut diamond weighing approximately 2.50 carats, screw fittings (2)

**R85 000 – 95 000**

**10**  
**Cultured pearl and diamond necklace**  
 composed of three rows of cultured pearls, to a clasp set with a pearl and two round brilliant-cut diamonds, weighing approximately 1.10 carats, *length of shortest row approximately 36cm*

**R15 000 – 20 000**

**11**  
**Sapphire, emerald and diamond-set giardinetto brooch**  
 the pierced basket issuing a floral display embellished with calibré-cut, round- and oval-cut sapphires, brilliant-cut diamonds and round-cut emeralds

**R9 000 – 12 000**



10

12



12

**Pair of diamond ear pendants**  
of chandelier design, each octagonal  
surmount set with brilliant-cut and old-cut  
diamonds, suspending two double knife-  
edge bars mounted with seven brilliant-cut  
diamonds, *later screw fittings* (2)

**R20 000 – 30 000**

13



13

**Diamond and white gold bracelet,**  
**1940s**

designed as a band embellished to the  
centre with a rectangular plaque, set with  
four old brilliant-cut diamonds enclosed  
by eight-cuts and old-cuts, the flattened  
rectangular articulated links further  
accented with four round-cut diamonds  
bordered by old-cut diamonds, *length*  
*approximately 17,5cm*

**R60 000 – 80 000**

14



14

**Pair of diamond brooches**  
horse-shoe shaped, pavé-set with round  
brilliant-cut diamonds and highlighted  
with three baguette-cut and three square-  
cut diamonds, weighing approximately  
3.32 carats (2)

**R12 000 – 15 000**





15



16



17

15

**Diamond and onyx brooch, 1920s**

lozenge-shaped, the centre millegrain-set with two old-cut diamonds, weighing approximately 4.95 carats, enclosed by a double row of old-cut diamonds weighing approximately 4.21 carats; with a *later* loop and spectacle chain (2)

**R60 000 – 80 000**

Lots 15, 16, 18 and 19 were purchased by the current owner's grandmother from C. Morsch & Co, Manufacturing Jewellers, 88 Goswell Road, ECI. in 1923

16

**Onyx and diamond bracelet, 1920s**

the articulated tapered band millegrain-set with step-cut onyx and old-cut diamonds, set at the centre with a circular-cut diamond, weighing approximately 1.20 carats, *repairs*, *length approximately 18cm*

**R35 000 – 40 000**

17

**Diamond brooch, 1930s**

designed as an openwork bow, set with eight-cut, brilliant- and baguette-cut diamonds, weighing approximately 13.30 carats

**R45 000 – 55 000**

18

**Unset brilliant-cut diamond**  
weighing 10.6110 carats

*Accompanied by a report no.  
120501896/83781 from E.G. Laboratory,  
South Africa, stating that the diamond  
weighing 10.6110 carats is N in colour  
and SI1 clarity*

**R400 000 – 450 000**



18

19

**Sapphire and diamond bracelet,**  
**1920s**

the articulated tapered band set with  
calibr -cut blue sapphires, old-cut and  
eight-cut diamonds, set at the centre with  
an old-cut stone, *one sapphire deficient,*  
*length approximately 17cm*

**R35 000 – 40 000**

20

**Pair of diamond dress clips, 1930s**  
of 'Odeonesque' design, set with round  
brilliant-cut and baguette diamonds, *fitted*  
*case*

**R80 000 – 90 000**



19

20



21

21

**Ruby, diamond and gold brooch, 1940s**

9 carat, of stylised scroll design set with circular-cut rubies, old-cut and baguette-cut diamonds, *formally a clip*; and a 9 carat yellow and white gold clip, 1940s, of 'Odeonesque' form (2)

R4 000 – 5 000

22

**Ruby and diamond ring, 1940s**

of geometric design, set to the centre with a border of calibr -cut rubies, accented with a double semi-circular line of brilliant-cut diamonds, *size L, French Assay marks*

R5 000 – 7 000

23

**Ruby and diamond ring**

9 carat gold, the brilliant-cut diamond set within a calibr -cut ruby square surround, to an outer border of brilliant-cut diamonds, *size N*

R4 000 – 5 000

23



24

24

**Pair of ruby and diamond hoop earrings**

channel-set with calibr -cut rubies, accented with graduated rows of single-cut diamonds, *later screw fittings* (2)

R2 000 – 3 000

25

**Lady's ruby, diamond and gold cocktail watch, Universal, Gen ve, post 1937**

circular, the hinged cover set with nineteen rubies, the shoulder set with thirty-six brilliant-cut diamonds and calibr -cut rubies, opening to reveal a circular dial applied with Roman numerals and baton indicators, set to a gaspipe design bracelet with clasp, *the watch case numbered 21634, stamped Universal, Gen ve, Balance, Montecarlo, length approximately 16cm*

R15 000 – 20 000



25

26

**Gold, red spinel and diamond brooch, 1940s**

9 carat yellow and white gold, designed as a sunflower, the centre of the flowerhead set with four red spinels embellished with old-cut diamonds, some petals heightened with diamond tips, the stems bound with old-cut diamond borders

**R7 000 – 9 000**

27

**Gold bracelet**

composed of seven textured strands, set to a clasp, *length approximately 18cm*

**R10 000 – 12 000**

28

**Pair of sovereign cufflinks**

each with a chain and dumbbell fitting (2)

**R3 000 – 4 000**

29 part lot

not actual size

26





30

31

## Indian Jewellery from the Vivienne Linder Collection

29

**Pair of earrings and brooch**  
each designed as a flowerhead centred by a  
white stone, with *later* screw fittings (3)

**R3 000 – 5 000**

30

**Indian gold fancy-link necklace**  
designed as a fringe suspending foliate  
pendants and spherical beads on a rod-  
and-link chain, *length approximately 38cm*

**R36 000 – 40 000**

31

**Indian Kangan bangle**  
hinged, pierced and encrusted with  
flowerheads set with alternating seed pearls  
and red stones, *approximate inner diameter*  
*170mm*

**R12 000 – 16 000**



32

32

**Indian gold pendant necklace**  
openwork pendant of foliate design  
set with red stones on a conforming  
chain connected by pierced swags  
and leaf-shaped pendants, *length*  
*approximately 63cm (2)*

**R45 000 – 50 000**



33

**Indian gold fancy-link necklace**

composed of rod and chain links, *length approximately 37cm*

**R30 000 – 35 000**

34

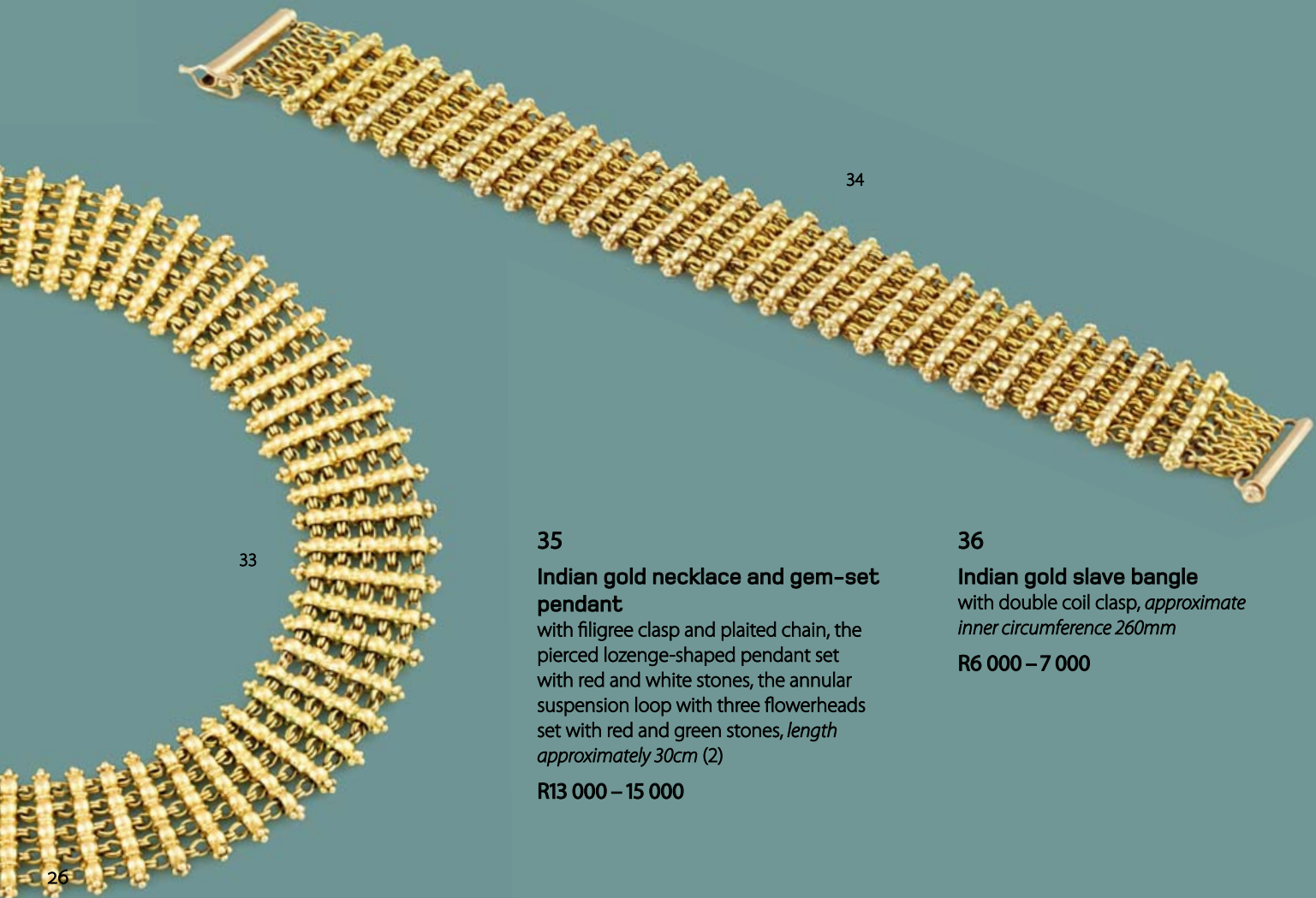
**Indian fancy link gold bracelet**

similar to the preceding lot, *length approximately 17cm*

**R25 000 – 30 000**



35



33

34

35

**Indian gold necklace and gem-set pendant**

with filigree clasp and plaited chain, the pierced lozenge-shaped pendant set with red and white stones, the annular suspension loop with three flowerheads set with red and green stones, *length approximately 30cm (2)*

**R13 000 – 15 000**

36

**Indian gold slave bangle**

with double coil clasp, *approximate inner circumference 260mm*

**R6 000 – 7 000**

37

**Indian gold and red stone brooch**  
pierced foliate, set with a single red stone

R800 – 1 000

38

**Gold necklace**  
composed of alternating textured  
and smooth oval beads, *length*  
*approximately 37cm*

R12 000 – 14 000

39

**Indian gold chain**  
designed as an alternating series of  
fancy, openwork and oblong links, *length*  
*approximately 70cm*

R12 000 – 14 000

40

**Indian gold pendant necklace**  
set to the front with a pierced pendant  
enclosing a gold sovereign surmounted  
by a pair of birds, set to a flat-and-curb link  
chain, *length approximately 63cm*

R24 000 – 26 000







44



46

41

**Indian gold bangle**

of ribbed outline, *approximate inner circumference 175mm*

**R12 000 – 15 000**

42

**Two Indian gold bangles**

each with hammered decoration, *approximate inner circumference 175mm (2)*

**R3 500 – 4 500**

43

**Indian gold open ended bangle**

with foliate decoration

**R8 000 – 10 000**

44

**Indian gold and enamel pendant**

hexagonal, enamelled with blue, red, white and yellow flowers and foliage; and a gold link chain, *length approximately 53cm (2)*

**R4 500 – 5 000**



45

45

**Indian gold bangle**

the hinged and pierced band embellished with alternating hearts and flowerheads set with red stones, *approximate inner circumference 190mm*

**R7 000 – 9 000**

46

**Indian gold and red stone necklace**

the front set with an openwork cluster of red stones flanked by spacers, set to an open link chain with filigree closing clasp, *length approximately 42cm*

**R10 000 – 12 000**



**47**

**Indian gold bangle**

hinged and decorated with flowers and foliage; and a gold open-ended bangle, *approximate inner circumference 150mm (2)*

**R8 000 – 12 000**

**48**

**Pair of Indian gold bangles**

of rope design, *one lacking closing pin, approximate inner circumference 150mm (2)*

**R14 000 – 16 000**

**49**

**Two Indian gold bangles**

hinged, of rope outline, *lacking closing pins, approximate inner circumference 150mm (2)*

**R7 500 – 9 500**

**50**

**Two Indian child's hinged bangles**

of zig-zag outline, *approximate inner circumference 140mm (2)*

**R10 000 – 12 000**

**51**

**Two Indian gold bangles**

hinged and pierced with flowerheads and foliage, *lacking closing pins, approximate inner circumference 160mm (2)*

**R12 000 – 15 000**

With original stock labels for the 27 November 1952 stating the cost to be £2.10-6

**52**

**Two Indian gold bangles**

of ribbed outline, *approximate inner circumference 170mm (2)*

**R9 000 – 12 000**

**53**

**Indian gold bangle**

the front with filigree decoration, *approximate inner circumference 140mm;* and a baby's bangle with foliate decoration, *approximate inner circumference 110mm (2)*

**R12 000 – 15 000**

**54**

**Two Indian gold child's hinged bangles**

each hinge applied with bird and foliate motifs, *lacking closing pin approximate inner circumference 140mm (2)*

**R14 000 – 16 000**

**55**

**Indian gold bangle**

hinged, with scrolling foliate band, *lacking closing pin, approximate inner circumference 150mm*

**R9 000 – 12 000**



## Various properties

**56**

### **Edwardian ruby and diamond pendant, circa 1900**

of openwork floral design, millegrain-set with old-cut diamonds and accented with four claw-set rubies weighing approximately 0.88 carats, with later annular ring

*Accompanied by a report no. CDJ120406759 from E.G. Laboratory, South Africa, stating that the 53 old-cut diamonds are I-N in colour and SI-I2 clarity*

**R4 000 – 5 000**

**57**

### **Diamond brooch**

designed as a floral spray with ribbons, with seven claw-set round brilliant-cut and eight-cut diamonds, set to knife-edge bars, the millegrain-set ribbons with round brilliant-cut diamonds

**R4 000 – 6 000**

**58**

### **Sapphire and diamond pendant**

claw-set with a cushion-shaped sapphire weighing approximately 12.30 carats, the bail claw-set with a trillion-cut diamond weighing approximately 0.15 carats, to a fine chain, length approximately 40cm

**R20 000 – 25 000**

**59**

### **Gold and sapphire-mounted bracelet, 1970s**

the clasp of foliate design and embellished with thirteen claw-set blue sapphires weighing approximately 0.60 carats, set to five textured strands, one sapphire deficient, length approximately 19,5cm

**R8 000 – 10 000**

**60**

### **Diamond ring**

claw-set with a brilliant-cut diamond weighing approximately 1.01 carats, size Q1/2

**R30 000 – 32 000**



61

61

**Lady's diamond and white gold wristwatch, Movado, 1970s**

manual winding, damascened lever movement, square white dial applied with baton numerals, bezel-set with eight-cut diamonds, integrated textured woven bracelet with Movado locking clasp, 15mm square

**R15 000 – 20 000**



62

62

**Diamond and pearl brooch, late 19th century**

set to the centre with a flowerhead set with a pearl enclosed by old- and eight-cut diamonds, flanked by foliate motifs set with pearl and eight-cut, old- and rose-cut diamonds, on a knife-edge bar

**R6 000 – 8 000**

63

**Aquamarine, seed pearl and diamond negligée necklace, circa 1910**

millegrain set with seed pearls on a knife-edge bar terminating in oval-shaped aquamarine drops, headed by round-cut aquamarines flanking a seed pearl and old-cut diamond flowerhead, to a fine curb-link chain, length approximately 40cm

**R1 500 – 2 000**

64

**Cultured pearl necklace**

composed of two rows of cultured pearls approximately 7 mm in size, to a clasp set with garnets and pearls, inner length approximately 40cm

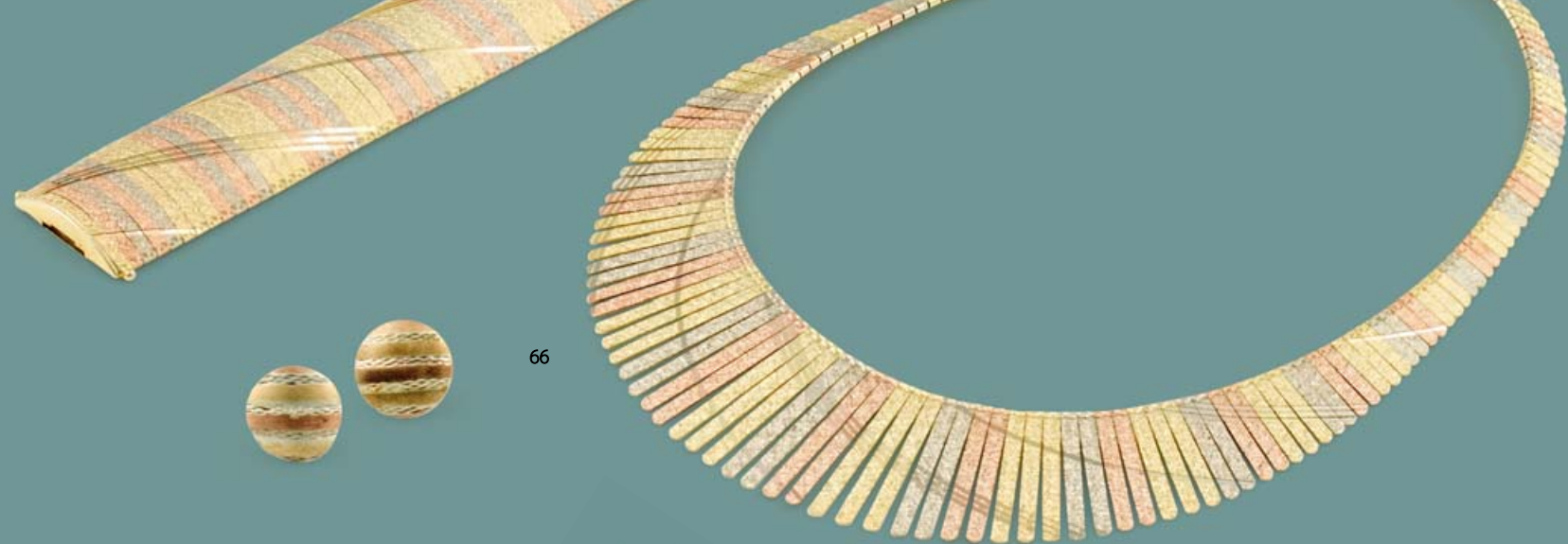
**R5 000 – 7 000**



63

64





66



67



68



69

65

### **Silver evening bag, possibly Portuguese**

the frame engraved with flowers to a mesh-link bag with five spherical pendants, to a curb link chain, *weighing approximately 125 grams*

**R600 – 800**

66

### **Italian gold tri-colour demi-parure, 1970s**

the necklace designed as a series of graduated flattened textured fringes to a solid surmount, accompanied by an articulated bracelet and a pair of earrings en-suite, the earrings with post and butterfly fittings, *approximate length of bracelet 17,5cm (4)*

**R15 000 – 18 000**

67

### **Three stone diamond ring**

tube-set with three brilliant-cut diamonds, weighing approximately 1.08 carats, *size N*

**R16 000 – 18 000**

68

### **Diamond ring**

claw-set with a pear-shaped diamond, weighing 0.3032 carats, enclosed by brilliant-cut diamonds, the shoulders half-set with two bands of brilliant-cut diamonds, *size M*

*Accompanied by a report no. 71102526/47649 from E.G. Laboratory, South Africa, stating that the diamond weighing 0.3032 carats is fancy pinkish brown in colour and I1 clarity*

**R14 000 – 15 000**

69

### **Diamond ring**

tube-set to the centre with an oval-cut diamond weighing 0.59 carats, enclosed by brilliant-cut diamonds, the bi-furcated shoulders with a line of brilliant-cut diamonds, *size M*

*Accompanied by a report no. 80509794 from E.G. Laboratory, South Africa, stating that the diamond weighing 0.59 carats is vivid fancy yellow in colour and VVS-VS clarity*

**R18 000 – 20 000**

70

**Unset round brilliant-cut diamond**  
weighing 1.2840 carats

*Accompanied by a report no.  
120604239/514550 from E.G. Laboratory,  
South Africa, stating that the diamond  
weighing 1.2840 carats is G in colour and VVS2  
clarity*

**R82 000 – 84 000**

71

**Diamond and gold bracelet**

the oval articulated plaque centrally set with  
five brilliant-cut diamonds, the shoulders  
tube-set with four brilliant-cut diamonds,  
weighing approximately 1.50 carats, set to a  
fancy-link strap, *length approximately 16,5cm*

**R12 000 – 15 000**

72

**Pair of diamond pendant earrings**

each surmount designed as a flower  
head tube-set with a brilliant-cut  
diamond weighing approximately  
1.10 carats, within a surround of brilliant-cut  
diamonds, suspending a pierced  
pear-shaped pendant, claw-set with  
brilliant-cut diamonds, weighing  
approximately 6.80 carats, *drops detachable*  
(2)

**R65 000 – 70 000**

71

70

72

73

**Lady's 18ct white gold and  
diamond-set wristwatch, 'Beluga'**  
**Tonneau, Ebel**

with diamond-set sides, nickel lever  
movement, mono-metallic balance,  
part pavé-set diamond dial with Arabic  
numerals, screw-in crown and screw-down  
back, case, dial and movement signed,  
with black crocodile leather strap and Ebel  
double-folding buckle, *diameter 21mm*,  
with presentation case, papers, additional  
mother-of-pearl dial and black leather strap

**R70 000 – 80 000**

73



74



76



75



77

74

#### **Emerald pendant**

claw-set with a pear-shaped emerald, weighing approximately 2.48 carats

**R14 000 – 16 000**

75

#### **Diamond necklace**

designed as an articulated fringe of graduated floral and foliate motifs, millegrain-set with round brilliant-cut and pear-shaped diamonds, weighing a total of approximately 8.00-8.50 carats, to a back chain of round and lozenge-shaped links, the links part-set with diamonds, length approximately 48cm

**R80 000 – 90 000**

76

#### **Tourmaline and diamond ring**

claw-set to the centre with an oval mint-green tourmaline weighing 6.698 carats, between two claw-set pear-shaped diamond shoulders weighing approximately 0.60 carats, the sides tube-set with two brilliant-cut diamonds, size M

*Accompanied by a report no. 004797 from The Jewellery Council of South Africa, stating that the tourmaline weighing 6.698 carats is mid-dark to mid toned slightly yellowish green colour and I-clean clarity*

**R60 000 – 65 000**

77

#### **Diamond half eternity ring**

set with a band of baguette-cut diamonds weighing approximately 1.5 carats, flanked by brilliant-cut diamonds, size N

**R15 000 – 17 000**



detail

78

# **Diamond and emerald necklace**

the slightly graduating line composed of claw-set brilliant-cut diamonds, the front with a marquise-cut diamond weighing 0.8220 carats, suspending two lines of brilliant-cut diamonds terminating in a pear-shaped diamond weighing 2.2240 carats and a pear-shaped natural emerald weighing approximately 2.93 carats, length approximately 45cm

Accompanied by a report no. 120406729/514120 from E.G. Laboratory, South Africa, stating that the pear-shaped diamond weighing 2.2240 carats is G in colour and VS2 clarity

Accompanied by a report no. 120406739/514120 from E.G. Laboratory, South Africa, stating that the marquise-cut diamond weighing 0.8220 carats is H in colour and SI1 clarity

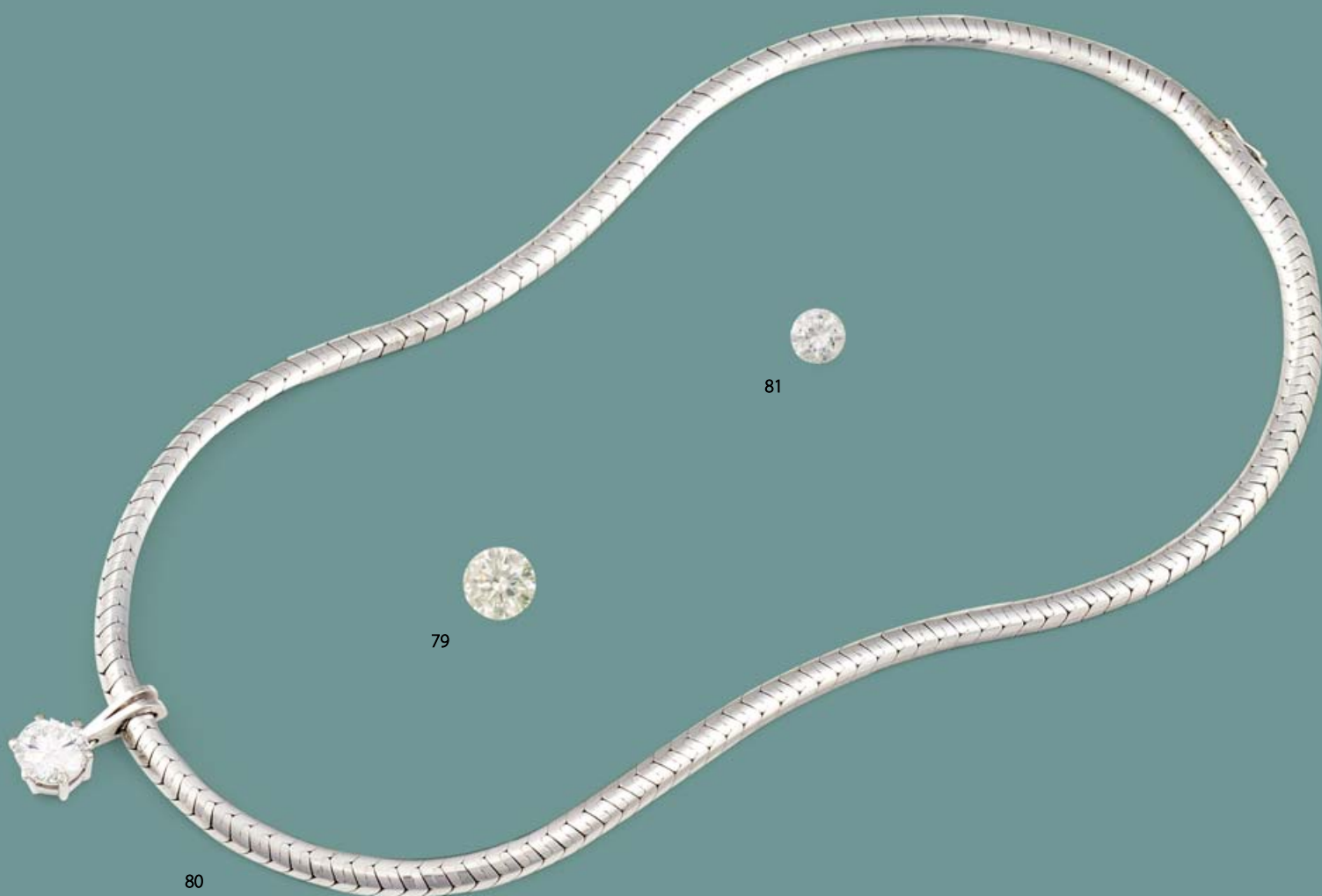
Accompanied by a report no. CDJ120406769 from E.G. Laboratory, South Africa, stating that the pear-shaped natural emerald weighs approximately 2.93 carats. There are 147 round brilliant-cut diamonds, tapering in size, G-J in colour and VS-SI clarity

**R220 000 – 230 000**



78





**79**

**Unset round brilliant-cut diamond**  
weighing 3.0263 carats

*Accompanied by a report no. 61001782/39582 from E.G. Laboratory, South Africa, stating that the diamond weighing 3.0263 carats is P in colour and VS2 clarity*

**R112 000 – 115 000**

**80**

**Diamond pendant necklace**  
the pendant claw-set with a round brilliant-cut diamond weighing 2.485 carats to a split-bale, with fancy link semi-articulated chain, length approximately 41cm

*Accompanied by a report no. 154547 from The Jewellery Council of South Africa stating that the diamond weighing 2.485 carats is G in colour and VVS2 in clarity*

**R310 000 – 320 000**

**81**

**Unset round brilliant-cut diamond**  
weighing 1.8910 carats

*Accompanied by a report no. 120706249/514797 from E.G. Laboratory, South Africa, stating that the diamond weighing 1.8910 carats is I in colour and VVS2 clarity*

**R115 000 – 120 000**



**82**

**Unset round brilliant-cut diamond**  
weighing 2.4203 carats

*Accompanied by a report no. 40495086/23035 from E.G. Laboratory, South Africa, stating that the diamond weighing 2.4203 carats is fancy yellow (N.C.N.A.) in colour and SI1 clarity*

**R80 000 – 90 000**

**83**

**Diamond line bracelet**

designed as an articulated line of claw-set round brilliant-cut diamonds, weighing approximately 4.25 carats, length approximately 18,5cm

*Accompanied by a report no. CDJ120406749 from E.G. Laboratory, South Africa, stating that the diamond bracelet has 45 round brilliant-cut diamonds, G-J in colour and VS-SI clarity*

**R25 000 – 30 000**

**84**

**Pair of diamond earstuds**

each claw-set with a brilliant-cut diamond, weighing 4.0760 and 4.0240 carats respectively (2)

*Accompanied by E.G. Laboratory, South Africa report nos. 111007049/512723 and 110903879/512441 stating that the colour grades are both H and the clarity grades are both VS2*

**R1 250 000 – 1 300 000**

85

**Lady's gold wristwatch, Eterna, 1970s**

manual winding damascened lever movement, shaped square, champagne dial, integrated textured bracelet with Eterna locking clasp, 20mm wide

R7 000 – 10 000

86

**Lady's gold and diamond bracelet watch, Omega, 1960s**

the textured hinged cover embellished with five round eight-cut diamonds opening to reveal a circular dial applied with baton indicators, signed Omega, set to an integrated textured bracelet with Omega locking clasp, 15mm diameter, not in working order

R4 000 – 6 000

87

**Tutti-frutti gem-set neck chain**

composed of two graduated strands spectacle-set with various oval-cut gems including citrines, amethysts, garnets, aquamarines, peridots and clear quartz, divided by a gold fancy-link chain, inner length approximately 35cm

R10 000 – 12 000

88

**Pair of citrine and gold earrings**

each collet-set with an oval-cut citrine, clip and post fittings (2)

R4 000 – 6 000



87



88



85

86

89

**Italian gold pill-box**

designed as a handbag with textured woven sides, 42mm wide

**R7 000 – 8 000**

90

**Diamond ring**

claw-set to the centre with a heart-shaped diamond weighing approximately 0.6216 carats, the shoulders set with brilliant-cut diamonds, size M1/2

*Accompanied by a report no. 71 103894/47855 from E.G. Laboratory, South Africa, stating that the diamond weighing 0.6216 carats is intense brownish orange in colour and SI1 clarity*

**R20 000 – 22 000**

91

**Gold necklace**

designed as a series of white and yellow gold open fancy-links joined by flattened curb-links, length approximately 47cm

**R16 000 – 18 000**

92

**Pair of round brilliant-cut diamond stud earrings**

each tube-set weighing 0.638 carats and 0.606 carats respectively (2)

*Accompanied by a report no. 154521 from The Jewellery Council of South Africa, stating that one diamond weighing 0.638 carats is G in colour and SI2 in clarity*

**R18 000 – 22 000**



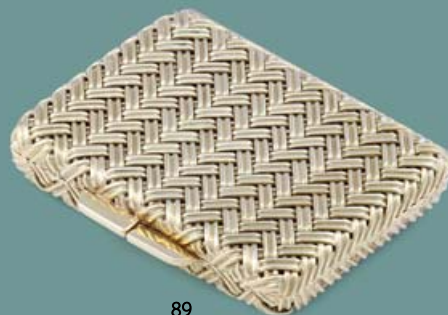
90



92

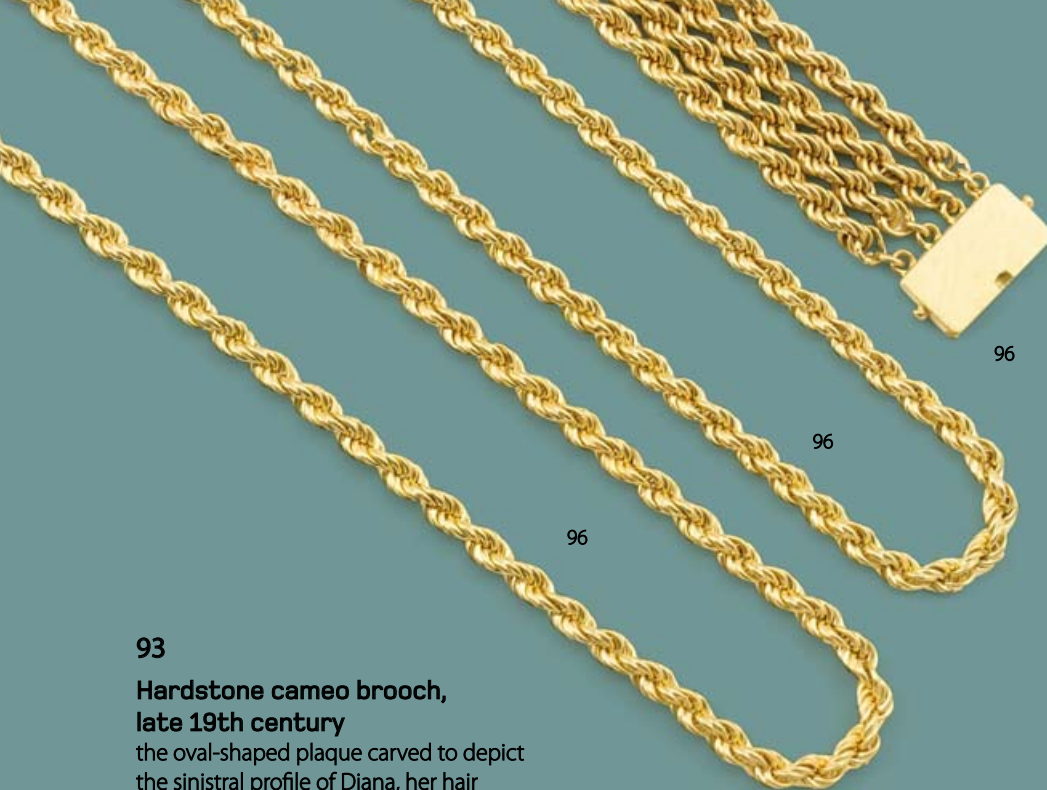


91



89





95

**Gold bracelet**

designed as two strands of rope-twist links, divided by a strand of nine rod and circular links, *length approximately 19cm*

**R7 000 – 8 000**

96

**Two fancy-link chains**

each with rope-twist link, *length approximately 75,5cm and 93cm respectively*; and a four-strand bracelet set to a rectangular textured clasp, *length approximately 17,5cm* (3)

**R18 000 – 20 000**

93

**Hardstone cameo brooch, late 19th century**

the oval-shaped plaque carved to depict the sinistral profile of Diana, her hair dressed with leaves and beads, collet-set with rope-work decoration

**R2 000 – 3 000**

94

**Five gold wild animal charms**

realistically rendered as two lions, an elephant, a springbuck and an impala (5)

**R17 000 – 18 000**

97

**Victorian diamond and sapphire brooch**

designed as a crescent moon with a shooting star, claw-set with a sapphire, the bar embellished with tubular-set old-cut diamonds; and two further Victorian examples (3)

**R2 500 – 3 000**



95

94



98



99



100



101



102

98

### **Diamond and emerald brooch, 1970s**

designed as a floral spray set with two claw-set baguette-cut diamonds and twenty claw-set round-cut emeralds

**R5 000 – 7 000**

99

### **Diamond ring**

collet-set to the centre with a round brilliant-cut diamond weighing approximately .90 carats, to a tapering bezel pavé-set with eight-cut and brilliant-cut diamonds, weighing approximately .85 carats, size O1/2

**R4 000 – 6 000**

100

### **Emerald and diamond brooch**

claw-set with a row of six round-cut emeralds weighing approximately 0.55 carats and six round brilliant-cut diamonds weighing approximately 0.60 carats to a bar

**R5 000 – 7 000**

101

### **Diamond and gold bangle**

set to the obverse with a square-shaped panel set with nine brilliant-cut diamonds flanked by tapering baguette diamonds, stamped with the initials MF, Martin Friedman, approximate inner circumference 58mm

**R18 000 – 20 000**

102

### **Diamond and gold crossover ring**

of geometric design, the tapering band horizontally-set to one end with a step-cut diamond weighing 1.790 carats, and to the other with two baguette-cut diamonds weighing approximately 0.24 carats, size K1/2

*Accompanied by a report no. 154535 from The Jewellery Council of South Africa stating that the diamond weighing 1.790 carats is G in colour and VS1 clarity*

**R95 000 – 100 000**

103

**Diamond ring**

claw-set to the centre with a cushion-cut diamond weighing 0.7380 carats, enclosed by brilliant-cut diamonds, the shoulder with a double line of brilliant-cut diamonds, *size M*

*Accompanied by a report no.*

*71103719/47827 from E.G. Laboratory, South Africa, stating that the diamond weighing 0.7380 carats is fancy yellow in colour and SI2 clarity*

**R16 000 – 18 000**

104

**Gold bracelet, 1970s**

woven-link chain, set to a rectangular clasp, 9ct, *length approximately 19,5cm*

**R10 000 – 12 000**

105

**Diamond bracelet**

the articulated bracelet designed as a series of thirty-nine claw-set princess-cut diamonds divided by S-shaped gold links, weighing approximately 2.55 carats, 9ct, *length approximately 18cm*

**R15 000 – 18 000**

106

**Gold fancy-link chain**

composed of a series of twist-turned and circular links, *length approximately 43,5cm*

**R12 000 – 14 000**







108



107



109

110



107

**Lady's gold wristwatch, Chopard, 1970s**

manual winding, damascened circular lever movement, circular champagne dial, integrated textured bracelet with Chopard locking clasp, *diameter 20mm*

**R7 000 – 10 000**

108

**Diamond and gold necklace**

the curb link chain interspersed with five circular inserts, each pavé-set with single-cut diamonds, *length approximately 37,5cm*

**R18 000 – 20 000**

109

**Diamond ring**

claw-set to the centre with a round brilliant-cut diamond weighing approximately 1.055 carats, *size R*

**R50 000 – 55 000**

110

**Gold bracelet**

designed as a series of interlocking oval links, *length approximately 20,5cm*

**R16 000 – 18 000**





111



112



113



114

**111**

**An Edwardian ebonised and gold-topped walking stick, maker's initials RFS & Co**  
the top engraved with the initials 'JP',  
87cm high

**R4 000 – 6 000**

**112**

**9 carat gold cigarette case, Birmingham, 1918**  
plain rectangular with hinged cover,  
approximately 9,5cm long

**R12 000 – 15 000**

**113**

**Gold half-hunting cased keyless lever watch, maker's initials R & S, Sheffield, 1899**

18k, nickle lever movement, 17 jewels, bi-metallic compensation balance, plain gold cuvette, the white enamelled dial with black roman numerals and calibrated outer ring, subsidiary dial for constant seconds, polished case with blue enamel roman numerals, *cuvette and covers numbered 38785, maker's mark R&S, diameter of dial 4,5cm*

**R9 000 – 12 000**

**114**

**Gold hunting cased keyless lever watch, Omega**

14k, damascened bi-metallic compensation balance, engraved balance cock, screwed chatons, cuvette with inscription, the white enamel dial with black Arabic numerals and calibrated outer ring, subsidiary dial for constant seconds, both covers engine-turned, *cuvette and covers numbered 5179373, diameter of dial 4,5cm*

**R6 000 – 8 000**



115

115

**9 carat gold spectacle case,  
makers Deakin & Francis Ltd,  
Birmingham, 1935**

oblong, the engine-turned case  
engraved with the initials F.D. and the  
dates 9.6.1886-9.6.1936, fitted with  
a pair of clip-on spectacle shades,  
*approximately 16cm long (2)*

**R16 000 – 18 000**



116

116

**9 carat gold spectacle case,  
makers Deakin & Francis Ltd,  
Birmingham, 1935**

oblong, the engine-turned case  
engraved with the initials J.M.D.  
and the dates 9.6.1886-9.6.1936,  
*approximately 11cm long*

**R9 000 – 12 000**



117

117

**9 carat gold George V match  
case, maker's initials M and  
B, possibly Morgan and Boon,  
Birmingham, 1925**

rectangular, with engine-turned  
cover, *6,5cm wide*

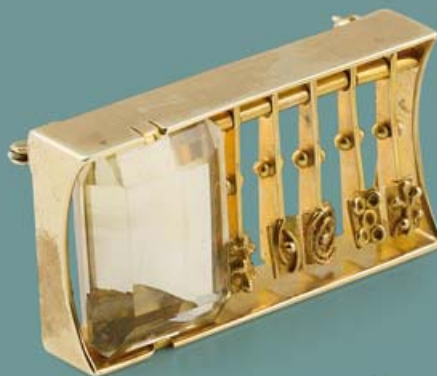
**R3 500 – 4 000**

118

**Topaz brooch, Studio of Erich Frey, 1970s**

rectangular abstract, set with an emerald-cut topaz and five articulated pendants, *width approximately 50mm*; and a pair of step-cut topaz earrings, *clip fittings* (3)

R8 000 – 10 000



118



119

**Gem-set brooch/pendant, Studio of Erich Frey, 1970s**

collet-set to the centre with an oval smokey quartz with pierced wavy border

R7 000 – 9 000



119

120

**Obsidian and silver mounted brooch, Studio of Erich Frey, 1970s**

of open abstract form, claw-set with a lozenge-shaped stone, *width approximately 48mm*

R1 500 – 2 000



126

125



121

121

**Gold and gem-set necklace connector**

shield-shaped, tube-set with various oval-cut gems including a garnet, two old-cut diamonds and three blue stones, flanked by twelve claw-set rubies with a half-pearl pendant

R8 000 – 10 000

122

**Cultured pearl necklace**

composed of two rows of cultured pearls graduated in size from approximately 5.7mm to 6.2mm, to a bow-shaped silver clasp, *inner length approximately 36cm*

R3 000 – 4 000

123

**Pair of gold and pearl earrings**

each designed as a textured half-hoop embellished with three pearls, *clip fitting (2)*

R3 000 – 4 000

124

**Sapphire and diamond pendant**

*formerly a clasp*, of flowerhead design, the pierced centre embellished with eight claw-set round sapphires and diamonds, with *later* bale and three foliate pendants

R2 500 – 3 000

125

**Gold fancy-link necklace**

composed of flattened curb-links, *length approximately 45cm*

R7 000 – 8 000

126

**Gold fancy-link chain**

composed of rope-twist links, *length approximately 39cm long*

R5 000 – 6 000

127

**Tri-colour gold mesh bracelet, 1960s**

15ct, *length approximately 18cm*

R3 000 – 4 000

128

**Georg Jensen 'Vivianna' stainless steel lady's wristwatch, designed by Vivianna Torun Bülow-Hübe**

circular silvered dial set to an open bangle, *impressed with numerals 226 and Torun, Georg Jensen stainless, Denmark, inner circumference 45mm*; and a Georg Jensen silver ring, set to the front with a dished circular disc, *signed Georg Jensen, 925 S Denmark, 107, size K (2)*

R7 000 – 9 000

129

**Lady's stainless steel wristwatch, Tag Heuer, 2000**

automatic nickel lever movement, white dial with applied luminous baton numerals and hands, date aperture, unidirectional turning bezel with precision ratchet, sapphire crystal, screw-in crown, circular water-resistant type case, stainless steel bracelet with double security folding clasp, case, dial and movement signed, *diameter 22mm*, with presentation case

R5 000 – 7 000

130

No Lot



128 part lot