



Country Club Johannesburg, Woodmead  
11 June 2012 – 3.30 pm

## Fine South African and International Art

Day Sale  
Lots 141–340

## International

141

German School

19TH CENTURY

*Introducing the Baby*

oil on tin  
20 by 24 cm

R3 000–5 000

142

Style of

Johannes Hermanus Barend

**KOEKKOEK**

DUTCH 1840–1912

*Dutch Ships in a Choppy Sea*

signed  
oil on panel  
18 by 29,5 cm

R5 000–7 000

143

Style of

James **STARK**

BRITISH 19TH CENTURY

*Figures by a River*

oil on panel  
23,5 by 28,5 cm

R3 000–4 000



141



142





144

Rowland HILDER

BRITISH 1905–1993

*Tug and Lighters, Cambridgeshire*

signed

watercolour

28 by 38 cm

(2)

R20 000–30 000

Accompanied by the book Rowland Hilder and Denis Thomas, *Rowland Hilder's England*, The Herbert Press Limited, London, 1986.

LITERATURE

Rowland Hilder and Denis Thomas, *Rowland Hilder's England*, The Herbert Press Limited, London, 1986, page 37, illustrated in colour.



145

145

James **WHAITE**

BRITISH 19TH CENTURY

*The Harvesters*

signed

watercolour

25,5 by 35,5 cm

**R9 000–12 000**

146

James Burrell **SMITH**

BRITISH 1822–1897

*A Scottish Landscape with Figures  
and a Castle*

signed and indistinctly dated 1840

watercolour

19 by 32 cm

**R2 500–4 000**

147

Style of  
Samuel **PROUT**

BRITISH 1783–1852

*Lake of Como*

watercolour

33 by 23,5 cm

**R1 800–2 400**



148

148

Sir William Russell **FLINT**

BRITISH 1880–1969

*The Centurion*

signed, dated 27.11.57 and indistinctly inscribed  
conté on paper

20,5 by 23 cm

**R18 000–24 000**



149

149

Sir William Russell **FLINT**

BRITISH 1880–1969

*A Seated Lady*

signed and dated c.30.4.56  
red conté

19,5 by 16 cm

**R12 000–16 000**

150

Frederick **SMALLFIELD**

BRITISH 1829–1915

*Portrait of a Young Lady*

signed and dated April 1889

watercolour

13 by 11 cm

**R2 500–3 500**

151

Lorenzo **BONECHI**

ITALIAN 1955–1994

*Head of a Boy, in the Titian Manner*

signed and dated 90

tempera on paper

36,5 by 24,5 cm

**R12 000–16 000**



151

152

David HOCKNEY

BRITISH 1937–

*Peter Schlesinger*

signed, dated 76 and numbered  
35/90

lithograph in colours  
40 by 30 cm

**R9 000–12 000**

LITERATURE

Tokyo Museum of Contemporary Art,  
*David Hockney: Prints 1954–1995*, Tokyo  
Museum of Contemporary Art, Tokyo and  
Tankosha Publishing Co. Ltd., Tokyo, 1996,  
page 111.

153

David HOCKNEY

BRITISH 1937–

*Mo with Five Leaves*

signed, dated 71 and inscribed AP in  
pencil in the margin, aside from the  
edition of 75

etching  
68 by 53,5 cm

**R20 000–30 000**

LITERATURE

Tokyo Museum of Contemporary Art,  
*David Hockney: Prints 1954–1995*, Tokyo  
Museum of Contemporary Art, Tokyo and  
Tankosha Publishing Co. Ltd., Tokyo, 1996,  
page 89.



152



153





154

154

Joan MIRÓ

SPANISH 1893–1983

*Grans Rupestres VI (Large Cave Paintings VI)*

1979

signed and numbered 1/30

etching and aquatint

88,5 by 67,5 cm

**R40 000–60 000**

LITERATURE

Jacques Dupin and Ariane Lelong-Mainaud, *Miró Engraver: IV*. 1976–1983, Galerie Lelong, France, 2001, number 1058, page 93.



155

155

Joan MIRÓ

SPANISH 1893–1983

*Les Révolutions Scéniques du XXe Siècle (Cramer 1078)*

1975

signed and numbered 25/80

lithograph in colours

31,5 by 25,5 cm

**R5 000–8 000**

LITERATURE

Patrick Cramer, *Joan Miró Lithographs: V 1972–1975*, Maeght Éditeur, Paris, 1992, page 180–181.

156

Christiaan Karel APPEL

DUTCH 1921–2006

*A Beast-Drawn Man*

signed

lithograph in colours

50 by 39,5 cm

R8 000–10 000



156

157

Christiaan Karel APPEL

DUTCH 1921–2006

*An Abstract*

signed, dated 69 and numbered 59/110

lithograph in colours

68 by 52 cm

R7 000–10 000



157

158

Friedensreich HUNDERTWASSER

AUSTRIAN 1928–2000

*Die Häuser hängen unter den Wiesen  
(Kosehatzley 52)*

1971

signed, stamped and numbered 2659/3000

300 numbers ending with 9 are signed by

the artist, this one being 266/300

silkscreen in colours with metal imprints

sheet size: 48 by 66 cm

R16 000–20 000

from *Look at it on a Rainy Day*



158

159

Roberto MATTA

CHILEAN 1911–2002

*Fog Gog Magog*

signed and numbered 22/90 in pencil in

the margin

lithograph in colours

47 by 63 cm

R3 000–5 000

160

Marino MARINI

ITALIAN 1901–1980

*Danza Minima I (from Personaggi)*  
(Gaustalla 305)

1973

signed and numbered 43/50  
etching, drypoint and coloured  
aquatint  
63 by 48 cm

**R10 000–15 000**

Plate 5 from Personaggi

LITERATURE

Giorgio and Guido Guastalla, *Marino Marini: Catalogue Raisonné of Graphic Works 1919-1980*, Leslie J. Sacks Editions, Italy, 1993, page 104.

Alfredo and Carlo Coen and Giorgio Negro (Eds.), *Marino Marini Etchings and Lithographs: 1919–1980*, Shorewood Japan co. Ltd., Tokyo, 1991, page 157.



160

161

Marino MARINI

ITALIAN 1901–1980

*Spartaco (from an American Portrait 1776–1976)*  
(Gaustalla A184)

1975

signed and numbered XXXV/L  
etching in colour  
36,5 by 49 cm

**R7 000–10 000**

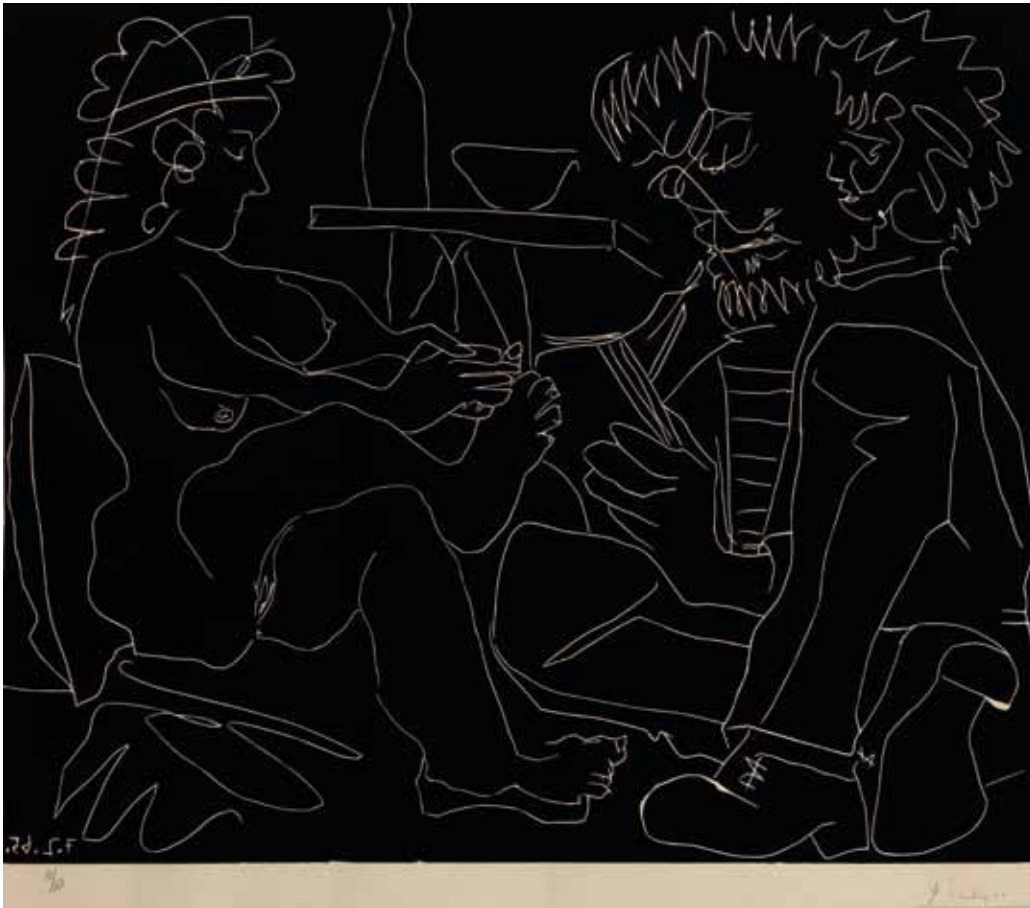
LITERATURE

Giorgio and Guido Guastalla, *Marino Marini: Catalogue Raisonné of Graphic Works 1919-1980*, Leslie J. Sacks Editions, Italy, 1993, page 110.

Alfredo and Carlo Coen and Giorgio Negro (Eds.), *Marino Marini Etchings and Lithographs: 1919–1980*, Shorewood Japan co. Ltd., Tokyo, 1991, page 167.



161



162

Pablo PICASSO

SPANISH 1881–1973

*Peintre Dessinant et Modèle nu au Chapeau*

signed and numbered 10/160 in pencil in the margin,

dated 7.2.65 on the plate linocut

52 by 63 cm

R20 000–30 000

South African



163

Jacob Hendrik **PIERNEEF**

SOUTH AFRICAN 1886–1957

*Trees in a Landscape, Lowveld*

signed

watercolour over pencil

24 by 34,5 cm

**R40 000–60 000**



164

164

Walter Whall **BATISS**

SOUTH AFRICAN 1906–1982

*A Tent and Cart in a Wooded Landscape (recto);  
Study of a Man (verso)*

recto signed; verso signed and dated  
15/5/32

recto watercolour; verso pencil  
32,5 by 35 cm

**R12 000–16 000**

165

Walter Whall **BATISS**

SOUTH AFRICAN 1906–1982

*Guildford Gypsies*

signed and inscribed with the title  
pencil and watercolour  
34 by 48,5 cm

**R20 000–30 000**



165

166

Pieter Hugo NAUDÉ

SOUTH AFRICAN 1868–1941

*A Seascape*

signed and dated 08  
watercolour on card  
16 by 33 cm

R12 000–16 000



166

167

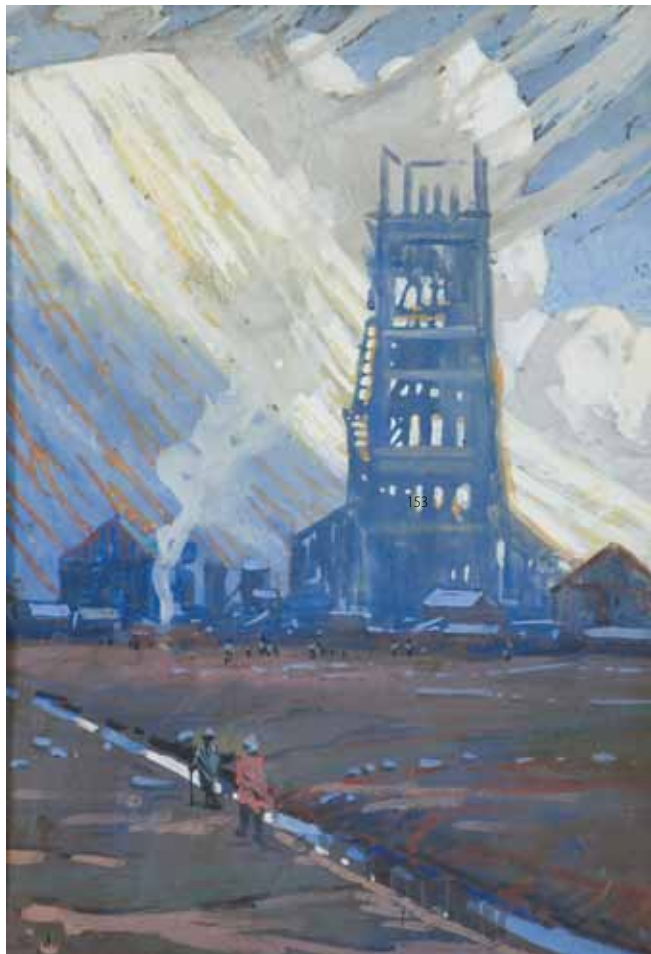
Allerley GLOSSOP

SOUTH AFRICAN 1870–1955

*Basotho Village*

signed  
watercolour  
30 by 42,5 cm

R3 000–5 000



168

168

Sydney CARTER

SOUTH AFRICAN 1874–1945

*Mine Headgear at Crown Mines*

signed  
gouache  
54,5 by 37,5 cm

R15 000–20 000



169

169

Walter Whall **BATISS**

SOUTH AFRICAN 1906–1982

*A Barn with Chickens*

signed and dated 1928

watercolour

22 by 30 cm

**R10 000–15 000**

170

Jacob Hendrik **PIERNEEF**

SOUTH AFRICAN 1886–1957

*'Mbwani', Zanzibar*

signed, dated Okt 54, inscribed  
with the title and stamped with the  
studio signature

watercolour over pencil

37 by 52 cm

**R30 000–40 000**



170





171

Maud Frances Eyston **SUMNER**

SOUTH AFRICAN 1902–1985

*A View of a Garden*

signed

pen and ink and watercolour

47 by 61,5 cm

**R30 000–50 000**

172

Edith Luise Mary **KING**

SOUTH AFRICAN 1869–1962

*Strelitzia*

authenticated by Leonora Everard-Haden, the artist's granddaughter and inscribed '*property of Ruth Haden*' on the reverse

ink and watercolour

55 by 40 cm

**R20 000–30 000**

173

Maud Frances Eyston **SUMNER**

SOUTH AFRICAN 1902–1985

*English Countryside*

signed

watercolour and charcoal

45 by 58 cm

**R30 000–40 000**

PROVENANCE

Acquired from the artist and thence by descent.



172



173



174

Maud Frances Eyston **SUMNER**

SOUTH AFRICAN 1902–1985

*Battersea Bridge over The Thames*

signed

pen and watercolour

48 by 62 cm

**R30 000–40 000**

**PROVENANCE**

Acquired from the artist and thence by descent.



176

175

Robert Gwelo **GOODMAN**

SOUTH AFRICAN 1871–1939

*A River Landscape*

signed

watercolour

26 by 36 cm

**R10 000–15 000**

176

Errol Stephen **BOYLEY**

SOUTH AFRICAN 1918–2007

*A Lagoon Scene*

signed

oil on canvas

45 by 60 cm

**R20 000–30 000**



177

**177**

Jan Ernst Abraham **VOLSCHENK**

SOUTH AFRICAN 1853–1936

*Pale Dawn, on the River Zonde End,  
Caledon CP*

signed and dated 1928; signed, dated 1928  
and inscribed with the title on the reverse  
oil on canvas  
35 by 40 cm

**R30 000–40 000**

**178**

Ernst Karl Erich **MAYER**

SOUTH AFRICAN 1876–1960

*An Encampment*

signed and dated 1933  
oil on canvas laid down on board  
12,5 by 16,5 cm

**R12 000–18 000**

**179**

Jacob Hendrik **PIERNEEF**

SOUTH AFRICAN 1886–1957

*Pretoria*

signed, dated 9 Junie 1920 and  
inscribed with the title  
pencil  
16 by 25 cm

**R8 000–12 000**

180

Gregoire Johannes

**BOONZAIER**

SOUTH AFRICAN 1909–2005

*A Roadway with Figure and Houses*

signed

oil on panel

19 by 15 cm

**R30 000–50 000**

181

Gordon Frank **VORSTER**

SOUTH AFRICAN 1924–1988

*Northern Cape Landscape with  
Quiver Trees*

signed

oil on canvas laid down on board

69 by 98,5 cm

**R25 000–35 000**

PROVENANCE

Acquired from the artist and thence by  
descent.



180



181



183

182

Kenneth **BAKER**

SOUTH AFRICAN 1931–1995

*An Evening Street Scene*

signed

oil on board

35,5 by 40,5 cm

**R12 000–16 000**

183

Walter Whall **BATTISS**

SOUTH AFRICAN 1906–1982

*Old Chelsea, New York*

signed, dated 24 May 1974 and inscribed

with the title

watercolour

46,5 by 57,5 cm

**R25 000–40 000**

EXHIBITED

Pretoria Art Museum, Pretoria, *Walter Battiss*

*Retrospective*, catalogue number 84.

184

Frank Sydney **SPEARS**

SOUTH AFRICAN 1906–1991

*A Cityscape*

signed

oil on board

38,5 by 49 cm

**R12 000–15 000**

185

Wim (Willem Adriaan) **BLOM**

SOUTH AFRICAN 1927–

*An Evening Landscape*

signed and dated '55

oil on board

49 by 59 cm

**R10 000–15 000**



186

186

Frank Sydney **SPEARS**

SOUTH AFRICAN 1906–1991

*A Still Life of Persimmons (recto);  
A Figure by a Fireplace (verso)*

recto signed

oil on board

36,5 by 46,5 cm

**R20 000–30 000**



187

Gregoire Johannes

**BOONZAIER**

SOUTH AFRICAN 1909–2005

*Bosveldpeule met Koperpan*

signed and dated 1976; signed and  
inscribed with the title on the reverse

oil on canvas

30 by 40 cm

**R30 000–50 000**

187



188

Maud Frances Eyston SUMNER

SOUTH AFRICAN 1902–1985

*A Girl and Her Dog*

signed and dated 49  
watercolour  
23 by 25,5 cm

R14 000–18 000



188

189

Maud Frances Eyston SUMNER

SOUTH AFRICAN 1902–1985

*A Seated Girl Knitting*

signed  
pen and watercolour  
37 by 29 cm

R18 000–24 000



189

190

Maud Frances Eyston SUMNER

SOUTH AFRICAN 1902–1985

*A View on to a Veranda*

signed  
pen and watercolour  
38 by 50 cm

R10 000–15 000



191

Maud Frances Eyston **SUMNER**

SOUTH AFRICAN 1902–1985

*A Cafe in Montparnasse*

signed and inscribed Paris 37; inscribed with the title on  
an exhibition label on the reverse

charcoal and watercolour

43 by 55 cm

**R35 000–50 000**

PROVENANCE

Acquired from the artist and thence by descent.

EXHIBITED

Pretoria Art Museum, Pretoria, *Maud Sumner*,  
November 1992, catalogue number 13.



192

192

Nerine Constantia **DESMOND**

SOUTH AFRICAN 1908–1993

*Basoeto Ruiters*

bronze with green patina  
height: 37cm, excluding base;  
on a marble base

**R20 000–30 000**

cf. A similar example is in the Rupert Museum, Stellenbosch



193

193

Edith Luise Mary **KING**

SOUTH AFRICAN 1869–1962

*Aloes in a Rocky Landscape*

signed  
ink and watercolour  
73,5 by 48 cm

**R20 000–30 000**

EXHIBITED

Adler Fielding Gallery, Johannesburg,  
*Retrospective Exhibition of the Everard Group*,  
February 1967, catalogue number 37.  
Pretoria Art Museum, Pretoria, *Retrospective  
Exhibition of the Everard Group*, September  
1967, catalogue number 17.



194

194

Nerine Constantia **DESMOND**

SOUTH AFRICAN 1908–1993

*Transkei Evening*

signed and dated '76

oil on canvasboard

37,5 by 48,5 cm

**R50 000–70 000**

195

Wolf **KIBEL**

SOUTH AFRICAN 1903–1938

*A Woman Reading*

signed

watercolour

17,5 by 26,5 cm

**R5 000–8 000**



196

John Koenakeefe **MOHL**

SOUTH AFRICAN 1903–1985

*Twilights of Dawn, in Lesotho Near Sunnypass (sic)*

signed, dated in the Twentieth Century; signed, dated  
and inscribed with the title on the reverse

oil on board

50 by 78 cm

**R30 000–40 000**

197

Phoshoko David **MOGANO**

SOUTH AFRICAN 1932–2000

*Thursday Prayers*

signed and dated 1989; inscribed with  
the title on the reverse  
watercolour  
26,5 by 36,5 cm

**R9 000–12 000**



197

Phoshoko David **MOGANO**

SOUTH AFRICAN 1932–2000

*A Township Street Scene*

signed and dated 86  
watercolour  
32 by 51,5 cm

**R9 000–12 000**

199

Azaria **MBATHA**

SOUTH AFRICAN 1941–

*Scenes from the Old Testament*

signed and numbered 39/100  
woodcut  
32 by 54,5 cm

**R3 000–5 000**

PROVENANCE

The Late Norman Eaton



198

200

Frank Sydney **SPEARS**

SOUTH AFRICAN 1906–1991

*Pietà*

signed  
oil on board  
59,5 by 44 cm

R5 000–8 000



200

201

Maud Frances Eyston **SUMNER**

SOUTH AFRICAN 1902–1985

*Christ Healing the Blind Man*

signed  
watercolour  
12,5 by 13 cm

R5 000–8 000

This is a preliminary sketch for a window in the Anglican Church, Prestatyn, Wales, installed January 1962.

LITERATURE

Frieda Harmsen, *Maud Sumner Painter and Poet*, Pretoria, 1992, pages 100–101.

202

Peter **CLARKE**

SOUTH AFRICAN 1929–

*A Figure and Goats Near a Barn*

signed, dated Oct. 1961 and numbered  
8/8 in pencil in the margin  
etching  
12 by 18 cm

R6 000–9 000



202



201

203

Maggie (Maria Magdalena)  
**LAUBSER**

SOUTH AFRICAN 1886–1973

*Portrait of Dr Andries Dreyer*

signed and dated '28;  
inscribed 'A Dreyer, Kaapstad 1926/28  
deur M Laubser' on the reverse  
oil on canvas  
54,5 by 44,5 cm

**R50 000–70 000**

For related subject matter see sketchbook 19.

Dr Andries Dreyer (1872–1938) was a missionary, church historian and archivist, whose publications and invaluable collections earned him an honorary doctorate from UNISA in 1937.

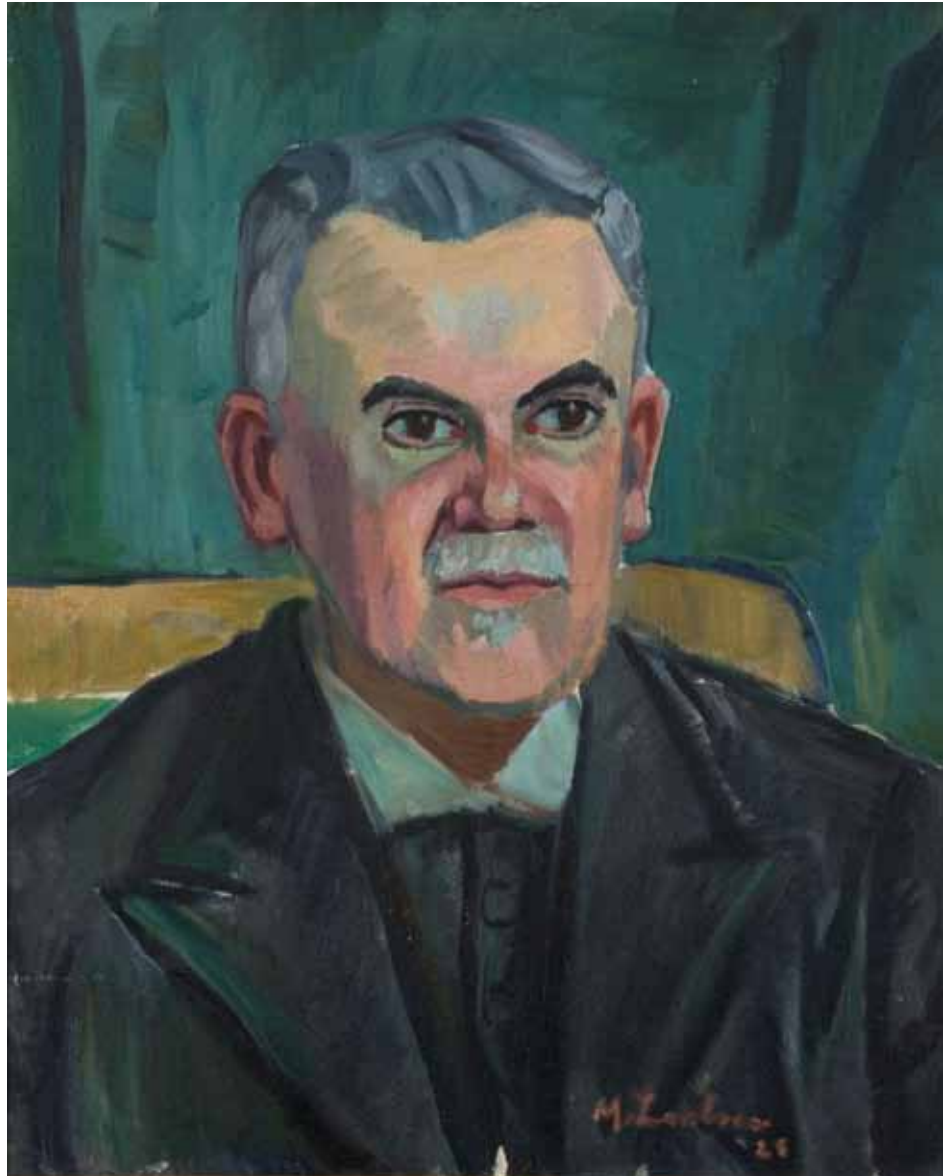
**PROVENANCE**

Acquired directly by the sitter and thence by descent to Prof and Mrs Meyer de Villiers, Stellenbosch and the current owner.

Prof Meyer de Villiers (1913–1995), an award-winning author of dictionaries and text books, was Professor of Afrikaans and Dutch at Stellenbosch University from 1953 until 1978. In addition to memberships of august bodies such as the International Association of Dutch Linguistics, he was a council member of the Michaelis Collection, now incorporated into Iziko Museums in Cape Town.

**LITERATURE**

Dalene Marias, *Maggie Laubser; her paintings, drawings and graphics*, Perskor, Johannesburg and Cape Town, 1994, catalogue number 711, page 215.





204

Peter CLARKE

SOUTH AFRICAN 1929–

*An African Figure in Elaborate  
Headgear*

signed and dated 17.12.1973

crayon

49 by 35 cm

R40 000–60 000



205

Gunther Friedrich Julius  
**VAN DER REIS**

SOUTH AFRICAN 1927–

*An African Helmet*

signed

bronze with verdigris patina  
height: 35 cm, excluding base;  
mounted on a wooden base

**R10 000–15 000**



205

206

Sydney Alex **KUMALO**

SOUTH AFRICAN 1935–1988

*An Abstract Mask*

signed and dated 83  
pencil and pastel  
46,5 by 32,5 cm

**R7 000–10 000**

207

Carl Adolph **BÜCHNER**

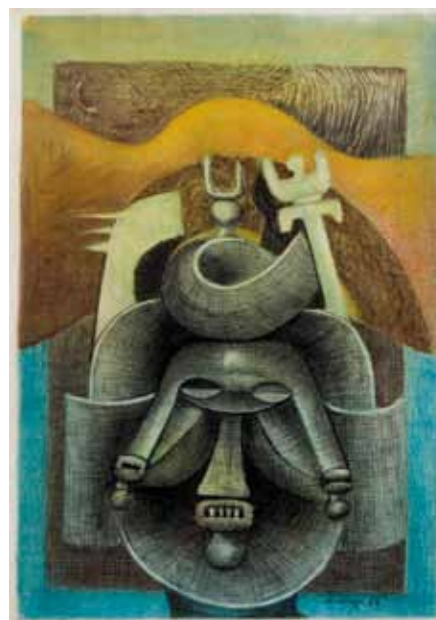
SOUTH AFRICAN 1921–2003

*A Harlequin with White Ruffle*

signed

oil on board  
34 by 29 cm

**R10 000–15 000**



206

208

Hennie (Hendrik Christiaan)  
**NIEMANN**

SOUTH AFRICAN 1941–

*A Harlequin*

signed

oil on board  
46 by 31 cm

**R10 000–15 000**

209

Sidney GOLDBLATT

SOUTH AFRICAN 1919–1979

*Architectural Abstract*

signed and dated 67

oil and collage on canvas

101 by 71 cm

**R25 000–35 000**

210

Frank Sydney SPEARS

SOUTH AFRICAN 1906–1991

*Venice*

signed

oil on canvas laid down on board

59 by 74 cm

**R16 000–18 000**

PROVENANCE

Acquired from the artist and thence by descent.

211

Hannes HARRS

SOUTH AFRICAN 1927–2006

*An Abstract Composition*

signed and dated '87 on the reverse

painted and incised wood panel

15 by 12 cm

**R4 000–6 000**



209



212

212

Bettie CILLIERS-BARNARD

SOUTH AFRICAN 1914–2010

*Abstract Forms*

signed and dated 1969

oil on canvas

90 by 60 cm

**R25 000–35 000**

PROVENANCE

Acquired from the artist and thence by descent.



213

213

Bettie CILLIERS-BARNARD

SOUTH AFRICAN 1914–2010

*Abstract Shield*

signed and dated 1970

mixed media on board

74,5 by 59 cm

**R12 000–18 000**

214

George Velaphi MZIMBA

SOUTH AFRICAN 1959–

*A Zulu Bride*

signed and dated 82

oil on canvas laid down on board

87 by 57 cm

R35 000–50 000

215

Gerard BHENGU

SOUTH AFRICAN 1910–1990

*An Elderly Zulu Couple Outside a Hut*

signed and dated 41

watercolour

18,5 by 27 cm

R15 000–20 000

216

Johannes Petrus MEINTJES

SOUTH AFRICAN 1923–1980

*Figure, House and Bird*

signed and dated 1962

oil on board

35,5 by 29,5 cm

R15 000–20 000

The Diary of Johannes Meintjes,  
number JM 747.

EXHIBITED

Rand Afrikaans University, Johannesburg,

*Johannes Meintjes Prestige Memorial*

*Exhibition*, 1990, catalogue number 49.



214



217

George Velaphi MZIMBA

SOUTH AFRICAN 1959–

*A Miner with a Machine Drill*

signed and dated 87

oil on board

59,5 by 121 cm

R40 000–60 000

218

Gladys **MGUDLANDLU**

SOUTH AFRICAN 1925–1979

*A Dancing Woman*

signed and dated 1965

oil on canvas

35,5 by 20,5 cm

**R15 000–20 000**

219

Jan **VERMEIREN**

SOUTH AFRICAN 1949–

*A Woman Wearing a Red Hat*

signed

oil on canvas

59 by 49 cm

**R15 000–20 000**

220

Jan **VERMEIREN**

SOUTH AFRICAN 1949–

*Two Figures and a Cat*

signed

oil on canvas

64 by 64 cm

**R15 000–20 000**



219



220

221

Frans Martin CLAERHOUT

SOUTH AFRICAN 1919–2006

*A Bride in a Donkey Cart*

signed; signed and inscribed with the title on a label on the reverse  
oil on board  
49,5 by 59,5 cm

R25 000–30 000

EXHIBITED

Pretoria Art Museum, Pretoria, *Vriende se Keuse*, October 1993.

222

Frans Martin CLAERHOUT

SOUTH AFRICAN 1919–2006

*A Bride with Sunflowers*

signed  
oil on board  
54,5 by 42 cm

R20 000–30 000

223

Nerine Constantia DESMOND

SOUTH AFRICAN 1908–1993

*Two Guitarists*

signed  
oil on board  
32 by 37,5 cm

R15 000–20 000

PROVENANCE

Acquired from the artist and thence by descent.



221



223



224

Titta FASCIOTTI

SOUTH AFRICAN 1927–1993

*A Xhosa Maiden*

signed and dated 79  
oil on canvas laid down on board  
34,5 by 24,5 cm

R20 000–30 000



224

225

Willie (William) BESTER

SOUTH AFRICAN 1956–

*Truck, Barber and Spaza Shop*

signed and dated 03  
oil and collage on board  
40 by 86 cm

R20 000–30 000



225



226

226

Pranas **DOMSAITIS**

SOUTH AFRICAN 1880–1965

*Blouberg Strand with Table Mountain*

authenticated by Adelheid Domsaitis,  
the artist's wife and inscribed with the  
title on a label on the reverse

oil on board

37,5 by 50 cm

**R25 000–35 000**

227

Walter Gilbert **WILES**

SOUTH AFRICAN 1875–1966

*A Beach Scene with Moored Boat*

signed

oil on board

45 by 60 cm

**R10 000–15 000**



227



228

Gordon Frank VORSTER

SOUTH AFRICAN 1924–1988

*Boats in a Bay*

signed

oil on board

75 by 95 cm

R25 000–40 000



229

Leonora EVERARD-HADEN

SOUTH AFRICAN 1937–

*Durban Dock, Low Tide*

signed; inscribed with the title on the reverse

oil on canvas

70,5 by 105,5 cm

R30 000–50 000

EXHIBITED

Tatham Art Gallery, Pietermaritzburg, *Jabulisa: The Art and Craft of KwaZulu-Natal*, catalogue number 30.

230

George ENSLIN

SOUTH AFRICAN 1919–1972

*Harbour Scene*

signed and dated '68  
oil on canvas  
58,5 by 88,5 cm

R18 000–24 000



230

231

Sidney GOLDBLATT

SOUTH AFRICAN 1919–1979

*Fishing Boats*

signed  
oil on board  
38,5 by 80,5 cm

R20 000–30 000



231

232

Adriaan Hendrik BOSHOFF

SOUTH AFRICAN 1935–2007

*Two Women on a Beach*

signed  
oil on canvas laid down on board  
18 by 30,5 cm

R7 000–10 000

233

Adriaan Hendrik BOSHOFF

SOUTH AFRICAN 1935–2007

*The Cattle Herder*

signed  
oil on canvas laid down on board  
18 by 33,5 cm

R6 000–9 000

234

Ernst Karl Erich **MAYER**

SOUTH AFRICAN 1876–1960

*A Rural Settlement*

signed and dated 1955

watercolour

17 by 24 cm

**R8 000–12 000**

235

William Mitcheson **TIMLIN**

SOUTH AFRICAN 1892–1943

*Extensive Landscape at Dusk*

signed

oil on canvasboard

37,5 by 58 cm

**R18 000–24 000**

236

Titta **FASCIOTTI**

SOUTH AFRICAN 1927–1993

*A Flight of Stairs in Simonstown*

signed

oil on canvas laid down on board

39,5 by 29,5 cm

**R20 000–30 000**

235



236





237

237

David Johannes **BOTHA**

SOUTH AFRICAN 1921–1995

*Chickens in a Farmyard*

signed

oil on canvas laid down on board

44 by 59,5 cm

**R25 000–35 000**

238

Terence John **MCCA**W

SOUTH AFRICAN 1913–1978

*A House in a Landscape*

signed and dated 51

oil on board

43,5 by 54 cm

**R30 000–50 000**



238



239

239

Piet (Pieter Gerhardus)

**VAN HEERDEN**

SOUTH AFRICAN 1917–1991

*Mieta se Huis, Rawsonville*

signed

oil on canvas laid down on board

37,5 by 49,5 cm

**R30 000–40 000**

240

Frans Martin **CLAERHOUT**

SOUTH AFRICAN 1919–2006

*Two Figures in a Field of Sunflowers*

signed

oil on board

77,5 by 51 cm

**R40 000–60 000**



240



241

Clement Edmond Theodore  
Marie **SERNEELS**

SOUTH AFRICAN 1912–1991

*A Young Girl*

signed and dated 66  
oil on board  
59 by 40 cm

**R15 000–20 000**

242

Jan (Johannes Wilhelmus)  
**DINGEMANS**

SOUTH AFRICAN 1921–2001

*African Figures*

signed  
oil on board  
46,5 by 59 cm

**R12 000–16 000**

243

Clement Edmond Theodore  
Marie **SERNEELS**

SOUTH AFRICAN 1912–1991

*Bouquet*

signed and dated 75  
oil on canvas  
88,5 by 68,5 cm

**R40 000–60 000**

PROVENANCE

Pieter Wenning Gallery, Johannesburg.



243

244

Aileen LIPKIN

SOUTH AFRICAN 1933–1994

*A Still Life with a Vase of Flowers and Apples*

signed

oil on canvas

101 by 76 cm

R15 000–20 000

245

Louis VAN HEERDEN

SOUTH AFRICAN 1941–

*A Still Life of Flowers in a Vase*

signed and dated 80

oil on canvas

79,5 by 59 cm

R7 000–10 000

246

Nita (Pauline Augusta  
Wilhelmina) SPILHAUS

SOUTH AFRICAN 1878–1967

*A Still Life of Spring Flowers*

signed with the artist's monogram

oil on board

29,5 by 27,5 cm

R25 000–40 000



246

247

Frank Sydney SPEARS

SOUTH AFRICAN 1906–1991

*A Still Life of Roses*

signed

oil on canvas

60 by 44 cm

R12 000–16 000

PROVENANCE

Acquired from the artist and thence by descent.

248

Christopher TUGWELL

SOUTH AFRICAN 1938–

*Mother and Child Returning to the Kraal*

signed

oil on board

59,5 by 90,5 cm

R20 000–30 000

249

Titta FASCIOTTI

SOUTH AFRICAN 1927–1993

*Trees by a Farm Gate*

signed

oil on board

35 by 50 cm

R12 000–18 000

250

Piet (Pieter Gerhardus) VAN HEERDEN

SOUTH AFRICAN 1917–1991

*A Country Road*

signed

oil on canvas laid down on board

40 by 49,5 cm

R25 000–35 000



248



250

251

Eben VAN DER MERWE

SOUTH AFRICAN 1932–

*Aloes at Elandskrants*

signed and dated '90; signed, dated  
1990 and inscribed with the title on the  
reverse

oil on board

55,5 by 78 cm

R10 000–15 000



251

252

Edward ROWORTH

SOUTH AFRICAN 1880–1964

*Thunderstorm, Zululand*

signed

oil on board

49,5 by 74,5 cm

R8 000–12 000



253

253

Edward ROWORTH

SOUTH AFRICAN 1880–1964

*Drostdy, Swellendam*

signed

oil on canvas

39 by 59 cm

R14 000–18 000



254

254

Jan Ernst Abraham VOLSCHENK

SOUTH AFRICAN 1853–1936

*Landscape, De Rust*

signed and dated 1915

oil on canvas laid down on board

11 by 22 cm

R15 000–20 000



255

Pieter Hugo **NAUDÉ**

SOUTH AFRICAN 1868–1941

*The Valley of a Thousand Hills*

signed

oil on board

21,5 by 34,5 cm

**R40 000–60 000**

**PROVENANCE**

Acquired from the artist by the current owner's father.



256

Jan Ernst Abraham **VOLSCHENK**

SOUTH AFRICAN 1853–1936

*The Twelve Apostles from Above Camp's Bay*

signed

oil on canvas laid down on board

16 by 34 cm

**R40 000–60 000**



257

257

Tinus (Marthinus Johannes) DE JONGH

SOUTH AFRICAN 1885–1942

*A River Landscape*

signed

oil on canvas

32 by 47,5 cm

R30 000–40 000

258

Tinus (Marthinus Johannes) DE JONGH

SOUTH AFRICAN 1885–1942

*An Extensive Landscape*

signed

oil on canvas

25 by 37,5 cm

R8 000–12 000

259

Amos LANGDOWN

SOUTH AFRICAN 1930–

*A Boy Leading a Goat*

signed

oil on canvas laid down on board

45 by 60 cm

R20 000–30 000

260

Amos LANGDOWN

SOUTH AFRICAN 1930–

*Women and a Child with Chickens*

signed

oil on board

49 by 40 cm

R18 000–24 000

261

Christopher TUGWELL

SOUTH AFRICAN 1938–

*Autumn Glow*

signed

oil on board

59,5 by 90 cm

R20 000–30 000

PROVENANCE

The Everard Read Gallery, Johannesburg.

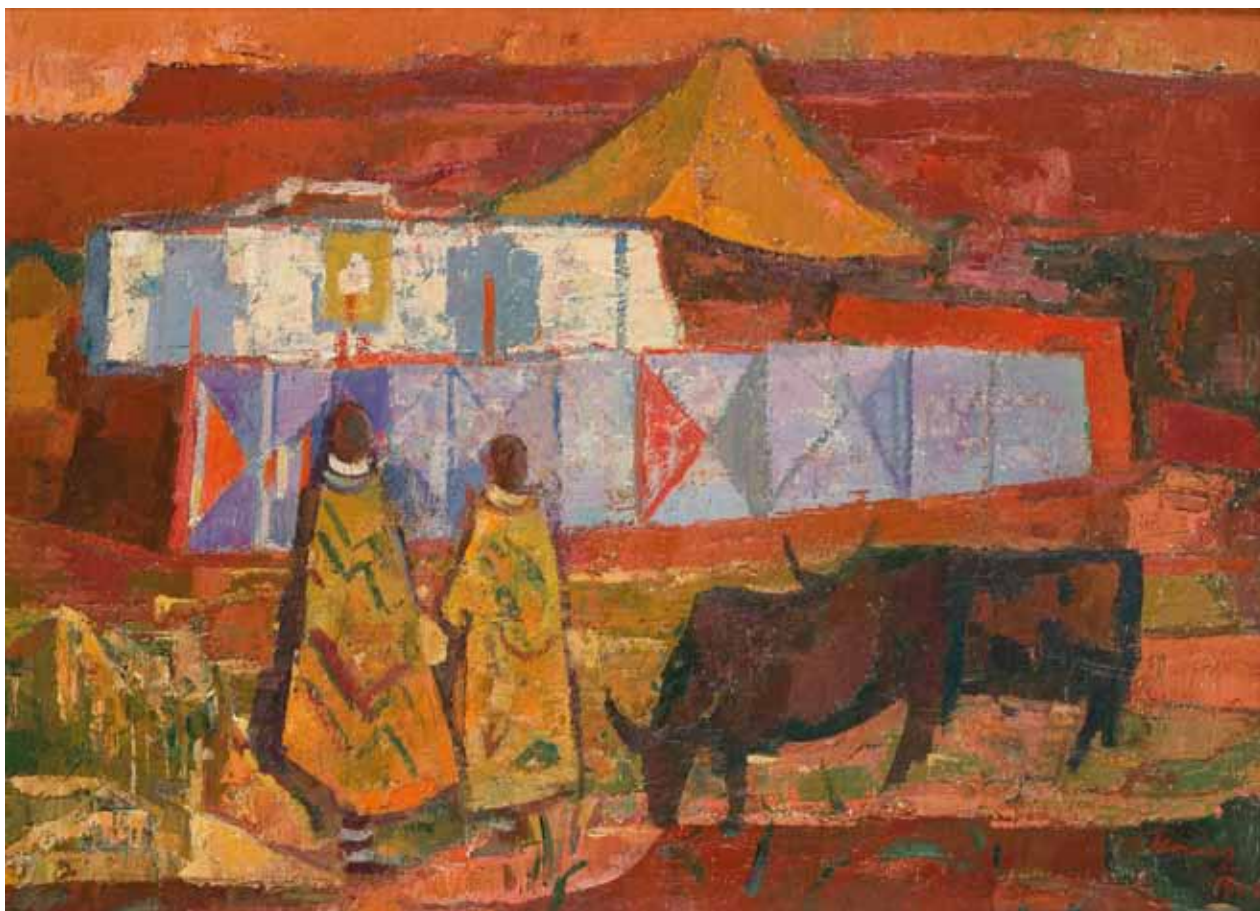


259



261





262

Alfred Friedrich Franz KRENZ

SOUTH AFRICAN 1899–1980

*Mapoch Settlement*

signed and dated 1965

oil on board

60 by 82 cm

R30 000–50 000

LITERATURE

cf. Ellen Davis-Mesman, *The Colourful Palette of Alfred Krenz*, the author, Onrust River, 1998, page 63, illustrated in colour.



263

Frans Martin CLAERHOUT

SOUTH AFRICAN 1919–2006

*A Figure on a Donkey Approaching a Village*

signed

oil on board

83,5 by 99 cm

R80 000–120 000

264

George Velaphi MZIMBA

SOUTH AFRICAN 1959–

*A Penny Whistler*

signed

oil on paper laid down on board

103 by 32 cm

**R18 000–24 000**

265

Johannes Petrus MEINTJES

SOUTH AFRICAN 1923–1980

*Autumn Still Life*

signed and dated 68

oil on board

49,5 by 18,5 cm

**R20 000–30 000**

The Diary of Johannes Meintjes,  
number JM 964.



264



265

266

Eugene LABUSCHAGNE

SOUTH AFRICAN 1921–1990

*Swazi Panel*

signed and dated '53

oil on canvas

38 by 49 cm

R30 000–40 000



266

267

Tertia KNAAP

SOUTH AFRICAN 1939–

*Egyptian Temple*

signed with the artist's monogram,

executed in 1998

carved wood

height: 163 cm

R4 000–6 000

This work was inspired by a visit Knaap made to Egypt. She was entranced by the mysticism of the ancient culture. After reading esoteric publications on the subject, including one which explained how the temple was a symbolic recreation of the human body, she created this image.



267

268

Nerine Constantia DESMOND

SOUTH AFRICAN 1908–1993

*A Malay Bride*

signed

oil and goldleaf on canvasboard

29 by 20 cm

R8 000–12 000



268



269

269

Raymond Hillary **ANDREWS**

SOUTH AFRICAN 1948–

*Okavango Elephant*

signed with the artist's initials; signed, dated 1985 and inscribed with the title on the reverse carved, painted and incised wood panel  
121,5 by 81 cm

**R18 000–24 000**

270

Reginald Ernest George **TURVEY**

SOUTH AFRICAN 1882–1968

*A Herd of Impala*

signed  
oil on board  
40 by 50 cm

**R7 000–10 000**



272

271

Reginald Ernest George **TURVEY**

SOUTH AFRICAN 1882–1968

*An Abstract Composition*

signed  
oil on board  
50 by 60 cm

**R10 000–15 000**

EXHIBITED

Pretoria Art Museum, Pretoria, *Memorial Exhibition*,  
1975–1976, catalogue number 142.

272

Durant Basi **SIHLALI**

SOUTH AFRICAN 1935–2004

*Sable Antelope*

signed and dated 50  
oil on board  
60 by 80 cm

**R25 000–40 000**



275

**273**

Gordon Frank **VORSTER**

SOUTH AFRICAN 1924–1988

*Buffalos Amongst Baobabs*

signed  
oil on board  
52 by 72 cm

**R8 000–12 000**

**PROVENANCE**

Acquired from the artist and thence by descent.

**274**

Gordon Frank **VORSTER**

SOUTH AFRICAN 1924–1988

*Zebra, Midday, Kalahari*

signed  
watercolour  
57 by 96 cm

**R8 000–12 000**

**275**

Errol Stephen **BOYLEY**

SOUTH AFRICAN 1918–2007

*Cattle Grazing Under an Overcast Sky*

signed  
oil on board  
54 by 74,5 cm

**R30 000–50 000**



276

**276**

Adriaan Hendrik **BOSHOFF**

SOUTH AFRICAN 1935–2007

*A Team of Oxen and Cart on a Country Road*

signed

oil on card laid down on board

41 by 70 cm

**R30 000–50 000**

**277**

Jean **DOYLE**

SOUTH AFRICAN 1930–

*Eve with Apple*

signed and numbered 5/6

bronze

height: 48 cm, excluding base;

mounted on a perspex base

**R10 000–15 000**

**278**

Elsa Hermine **DZIOMBA**

SOUTH AFRICAN 1906–1970

*Olga*

bronze with verdigris patina

height: 17 cm, excluding base;

mounted on a perspex base

**R8 000–12 000**



279

279

Edoardo Daniele VILLA

SOUTH AFRICAN 1915–2011

*A Standing Figure*

signed, dated 1977 and numbered 1/3

bronze

height: 43 cm, excluding base;

mounted on a wooden base

**R30 000–40 000**

LITERATURE

Fritz-Uwe Günther, *Edoardo Villa Museum Catalogue*, University of Pretoria, Pretoria, 1998, page 25, catalogue number 90.

280

Edoardo Daniele VILLA

SOUTH AFRICAN 1915–2011

*A Small Standing Figure*

signed and dated 1980

bronze

height: 34 cm, excluding base;

mounted on a wooden base

**R25 000–40 000**



280





281

**281**

Frans David **OERDER**

SOUTH AFRICAN 1867–1944

*A Still Life with an Oriental Figure and Orchids*

signed

watercolour

42 by 32 cm

**R10 000–15 000**



282

**282**

Stanley Faraday **PINKER**

SOUTH AFRICAN 1924–

*A Bird in a Garden*

signed

watercolour

34 by 20 cm

**R9 000–12 000**

**283**

Eugene **LABUSCHAGNE**

SOUTH AFRICAN 1921–1990

*Butterfly Sketch*

signed with the studio stamp

gouache

35 by 24 cm

**R7 000–10 000**

284

Fred (Frederick Hutchison)

PAGE

SOUTH AFRICAN 1908–1984

*Toads and Figures*

signed  
gouache  
47 by 24 cm

R18 000–24 000

285

Fred (Frederick Hutchison)

PAGE

SOUTH AFRICAN 1908–1984

*Thematic Development*

signed, dated 78 and inscribed with  
the title in pencil in the margin  
pen and ink  
28 by 44 cm

R10 000–15 000



284

286

Maud Frances Eyston **SUMNER**

SOUTH AFRICAN 1902–1985

*A View of a Chateau Through the Gate*

signed and dated 48  
pen and ink and watercolour  
45 by 60,5 cm

**R30 000–40 000**



286

287

Maud Frances Eyston **SUMNER**

SOUTH AFRICAN 1902–1985

*A Seated Nude*

signed  
ink and wash  
39 by 39 cm

**R9 000–12 000**



287

288

Maud Frances Eyston **SUMNER**

SOUTH AFRICAN 1902–1985

*Ophelia*

signed, executed circa 1945  
pen and ink  
19 by 12,5 cm

**R3 000–5 000**

There are numerous versions of Ophelia by Sumner. See Frieda Harmsen, *Maud Sumner Painter and Poet*, Pretoria, 1992, page 70.



288

289

Jacob Hendrik **PIERNEEF**

SOUTH AFRICAN 1886–1957

*A Nude with Roses*

linocut

37 by 19,7 cm

**R10 000–16 000**



289

290

Hennie (Hendrik Christoffel)

**POTGIETER**

SOUTH AFRICAN 1916–1992

*A Female Torso*

signed and dated 1963

bronze

height: 44 cm, excluding base;

mounted on a marble base

**R8 000–12 000**



290

291

Irma **STERN**

SOUTH AFRICAN 1894–1966

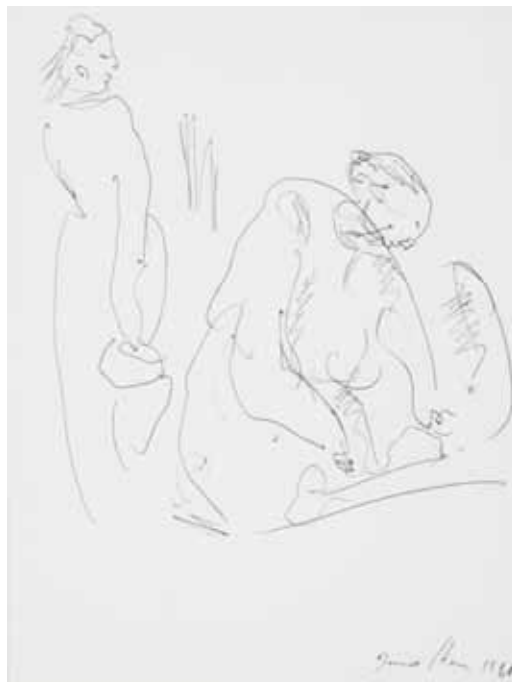
*Two Women*

signed and indistinctly dated 1960

pen and ink

29 by 22 cm

**R18 000–24 000**



291

292

Cecil Edwin Frans SKOTNES

SOUTH AFRICAN 1926–2009

*Orange Nude*

signed, dated 74 and numbered x/x  
proof

woodcut

61 by 34,5 cm

R3 000–5 000



293

Cecil Edwin Frans SKOTNES

SOUTH AFRICAN 1926–2009

*Altar to a Beached Whale*

signed and dated 81

oil on panel

28,5 by 39 cm

R30 000–40 000

PROVENANCE

Joseph Wolpe Gallery, Cape Town.

294

Cecil Edwin Frans SKOTNES

SOUTH AFRICAN 1926–2009

*Altar to a Beached Whale II*

signed and dated 81

oil on panel

28,5 by 39 cm

R30 000–40 000

PROVENANCE

Joseph Wolpe Gallery, Cape Town.



294



RECTO



VERSO

295

Raymond Hillary **ANDREWS**

SOUTH AFRICAN 1948–

*Spirit of the Resurrection (recto and verso)*

signed with the artist's initials

carved, painted and incised wood panel

30,5 by 23 cm;

mounted on a wooden base

**R10 000–15 000**

296

Cecil Edwin Frans SKOTNES

SOUTH AFRICAN 1926–2009

*An Abstract Head*

signed with the artist's initials  
carved, painted and incised wood panel  
18,5 by 13 cm

R25 000–35 000

297

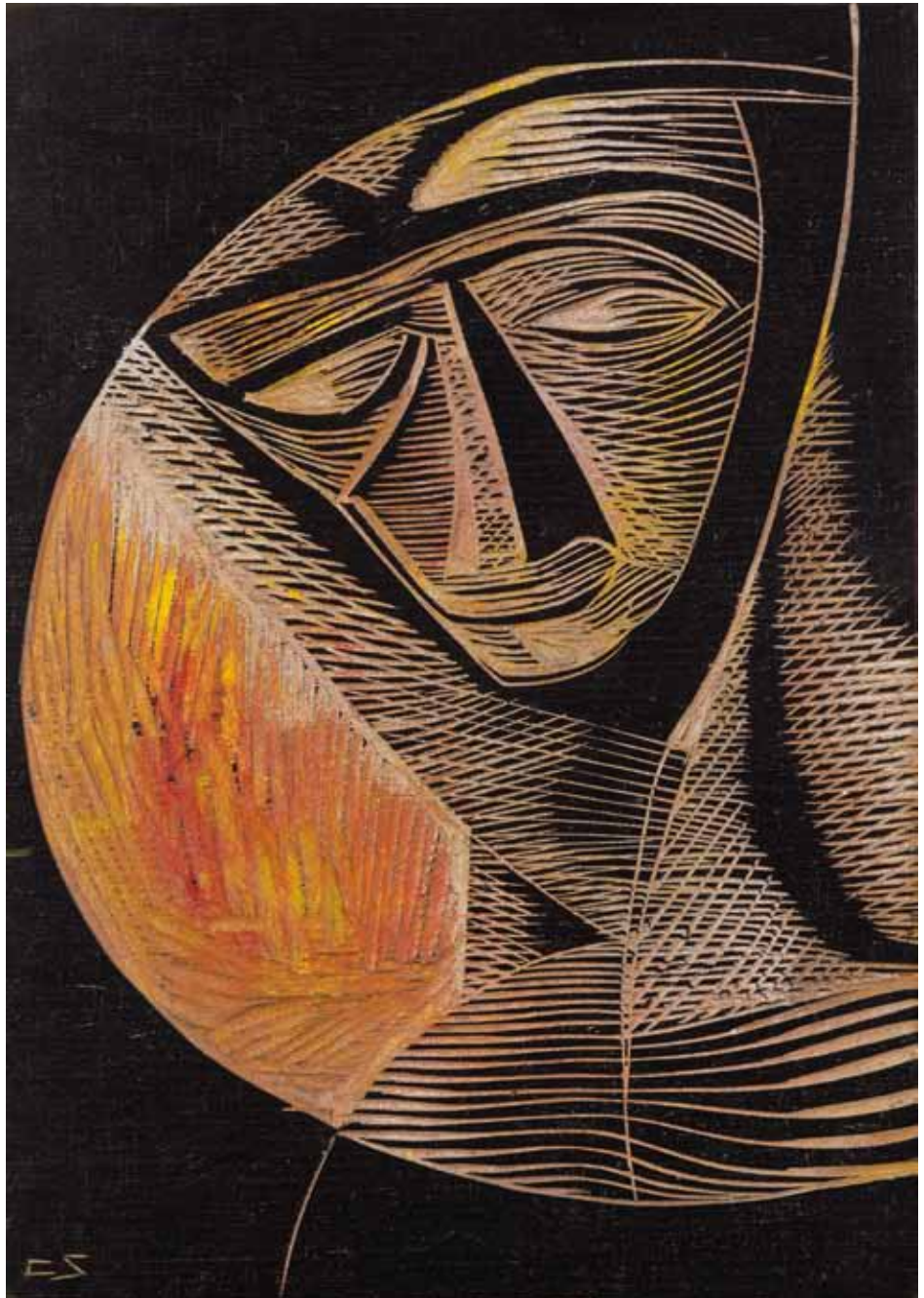
Cecil Edwin Frans SKOTNES

SOUTH AFRICAN 1926–2009

*Four Figures*

signed and dated 67  
watercolour  
35 by 45,5 cm

R6 000–9 000



296



298

298

Walter Whall **BATISS**

SOUTH AFRICAN 1906–1982

*Primordial Scene*

signed and inscribed with the title

pen and ink

44 by 49 cm

**R25 000–40 000**

299

Michael Alan **COSTELLO**

SOUTH AFRICAN 1948–

*Goat Man*

1975

soapstone

height: 75 cm

**R5 000–8 000**

PROVENANCE

Wolman-Goodman Gallery, Cape Town.



300

Ezrom Kgobokanyo Sebata

**LEGAE**

SOUTH AFRICAN 1938–1999

*A Figure and Feather*

signed

pencil

25 by 37 cm

**R6 000–9 000**



300

301

Ezrom Kgobokanyo Sebata

**LEGAE**

SOUTH AFRICAN 1938–1999

*Crucified Figure*

signed and dated 71

pen and ink

42 by 31 cm

**R7 000–10 000**



301

302

Diane Veronique **VICTOR**

SOUTH AFRICAN 1964–

*The Hammer and the Anvil*

signed, inscribed with the title and  
marked a/proof in pencil in the margin  
etching and aquatint

44,5 by 29,5 cm

**R5 000–7 000**



302

303

Walter Whall **BATISS**

SOUTH AFRICAN 1906–1982

*Bosveld*

signed, marked Proof and inscribed  
with the title in pencil in the margin  
linocut

33 by 44,5 cm

**R4 000–6 000**

304

Judith MASON

SOUTH AFRICAN 1938–

*Marionette*

signed and inscribed with the title

pencil and collage

83,5 by 70 cm

**R5 000–8 000**



305

305

Robert Griffiths HODGINS

SOUTH AFRICAN 1920–2010

*Golden Girl*

signed, dated '05, numbered 17/40

and inscribed with the title in pencil

in the margin

lithograph in colours

49 by 69,5 cm

**R10 000–15 000**



306

306

Robert Griffiths HODGINS

SOUTH AFRICAN 1920–2010

*Doan Mess with Me, Boy*

signed, dated '06, numbered 1/1 and

inscribed with the title in pencil in

the margin

monoprint

42,5 by 60 cm

**R12 000–16 000**



307

307

Robert Griffiths **HODGINS**

SOUTH AFRICAN 1920–2010

*Does One Know You?*

signed, dated '05, numbered 1/1 and inscribed  
with the title in pencil in the margin

monoprint

70 by 50 cm

**R20 000–30 000**



308

308

Robert Griffiths **HODGINS**

SOUTH AFRICAN 1920–2010

*Ulysses*

signed, dated 2005 and inscribed with the title on the reverse  
hand-painted and glazed ceramic plate

diameter: 33 cm

**R10 000–15 000**

LITERATURE

Retief van Wyk, *The Ceramic Art of Robert Hodgins*, Bell-Roberts  
Publishing, Cape Town, 2008, page 67, illustrated in colour.



309

309

Robert Griffiths **HODGINS**

SOUTH AFRICAN 1920–2010

*Pudding Head*

signed, dated Nov 2007 and inscribed with the title on the reverse  
hand-painted and glazed ceramic plate  
diameter: 33,5 cm

**R10 000–15 000**



310

310

Robert Griffiths **HODGINS**

SOUTH AFRICAN 1920–2010

*Heinz*

signed, dated 2007 and inscribed with the title on the reverse  
hand-painted and glazed ceramic plate  
diameter: 39 cm

**R10 000–15 000**

311

Hylton NEL

SOUTH AFRICAN 1941–

*Blue Leaves*

signed with the artist's initials and dated 20.10.98 on the reverse  
hand-painted and glazed ceramic bowl  
diameter: 22,5 cm

R2 000–3 000



311

312

Hylton NEL

SOUTH AFRICAN 1941–

*Portrait of a Bearded Man*

hand-painted and glazed ceramic bowl  
diameter: 25 cm

R4 000–6 000



312

313

Hylton NEL

SOUTH AFRICAN 1941–

*Three Figures*

signed with the artist's initials and dated 8.2.95 on the reverse  
hand-painted and glazed ceramic bowl  
diameter: 26 cm

R4 000–6 000



313

314

Hylton NEL

SOUTH AFRICAN 1941–

*A Shoe*

signed with the artist's initials and dated 8.2.95 on the reverse  
hand-painted and glazed ceramic bowl  
diameter: 26,5 cm

R3 000–4 000



314



315

315

Esias BOSCH

SOUTH AFRICAN 1923–2010

*Large Vessel with Scroll Handle*

brown glazed ceramic

height: 78 cm

R18 000–24 000



316

316

Esias BOSCH

SOUTH AFRICAN 1923–2010

*Abstract Flowers*

ceramic plaque with lustre glaze

52 by 35 cm

R7 000–10 000



317

Dylan LEWIS

SOUTH AFRICAN 1964–

*Sitting Leopard Maquette III*

signed, numbered 21/100 and inscribed with the title on a plaque under the base  
bronze

height: 10,5 cm, excluding base;  
mounted on a wooden base

R25 000–40 000

318

Norman Clive CATHERINE

SOUTH AFRICAN 1949–

*Sextuplets*

signed

oil on wood

height: 125 cm, including base

R50 000–70 000







319

N. CATHERINE

319

Norman Clive CATHERINE

SOUTH AFRICAN 1949–

*Title Fight*

signed

oil on wood

height: 44,5 cm, including base

R20 000–30 000



320

320

Norman Clive CATHERINE

SOUTH AFRICAN 1949–

*Ju-ju Man*

signed

oil on wood

height: 86 cm, including base

R15 000–20 000

321

Walter Whall BATTISS

SOUTH AFRICAN 1906–1982

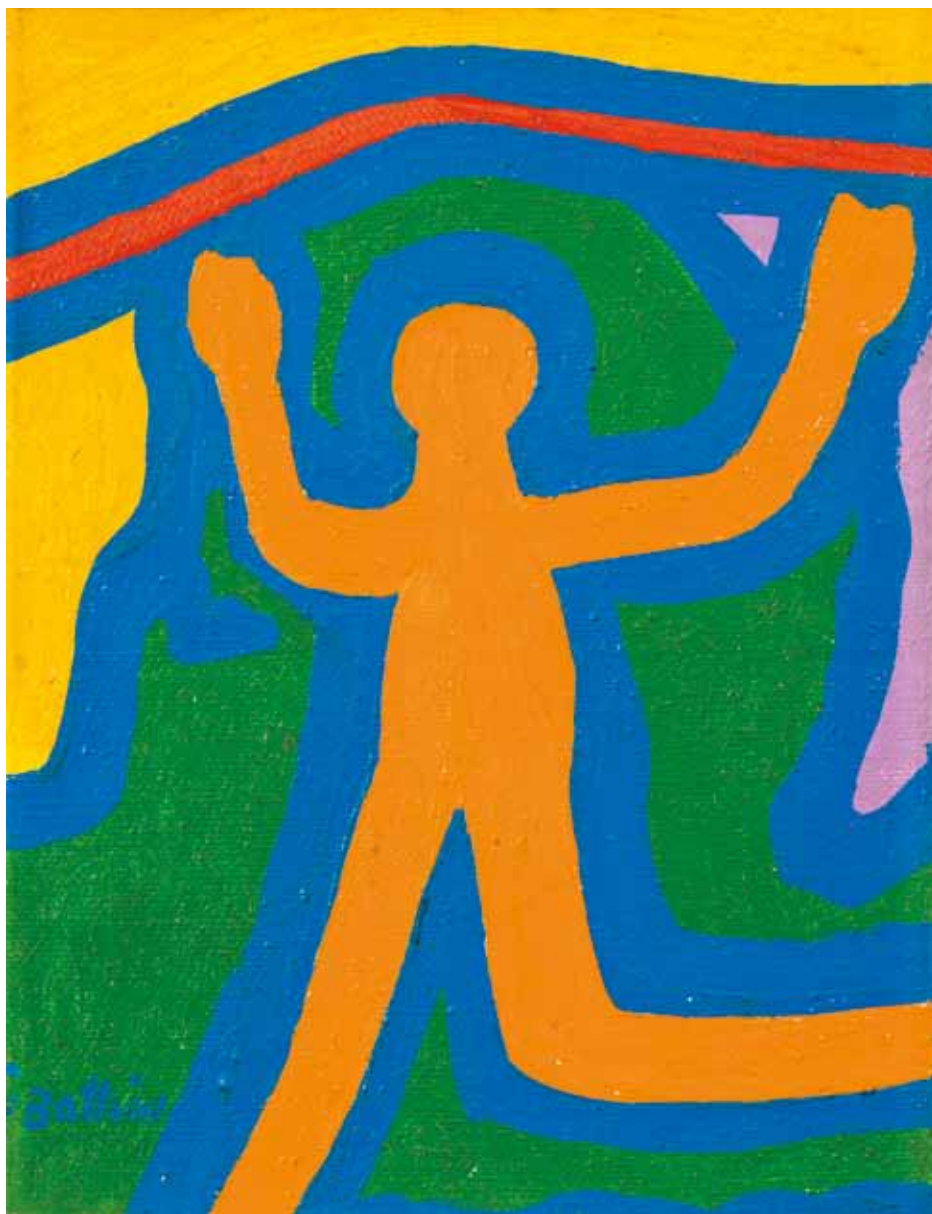
*A Man in the Morning*

signed

oil on canvas

24 by 19 cm

R25 000–40 000





322

Norman Clive CATHERINE

SOUTH AFRICAN 1949–

*Rendezvous*

signed and dated 84

airbrush and coloured pencil

29 by 38,5 cm

R40 000–60 000

PROVENANCE

The Goodman Gallery, Johannesburg.



323

Norman Clive **CATHERINE**

in collaboration with Allan **CAMERON**

SOUTH AFRICAN 1949–

*Beetle Study for a Film Story Board*

signed N. Catherine A. Cameron and dated 1984

airbrush and collage

42 by 42 cm

R20 000–30 000

324

Norman Clive CATHERINE

SOUTH AFRICAN 1949–

*Fake Fook Flower*

signed, dated 1974 and inscribed with

the title

airbrush

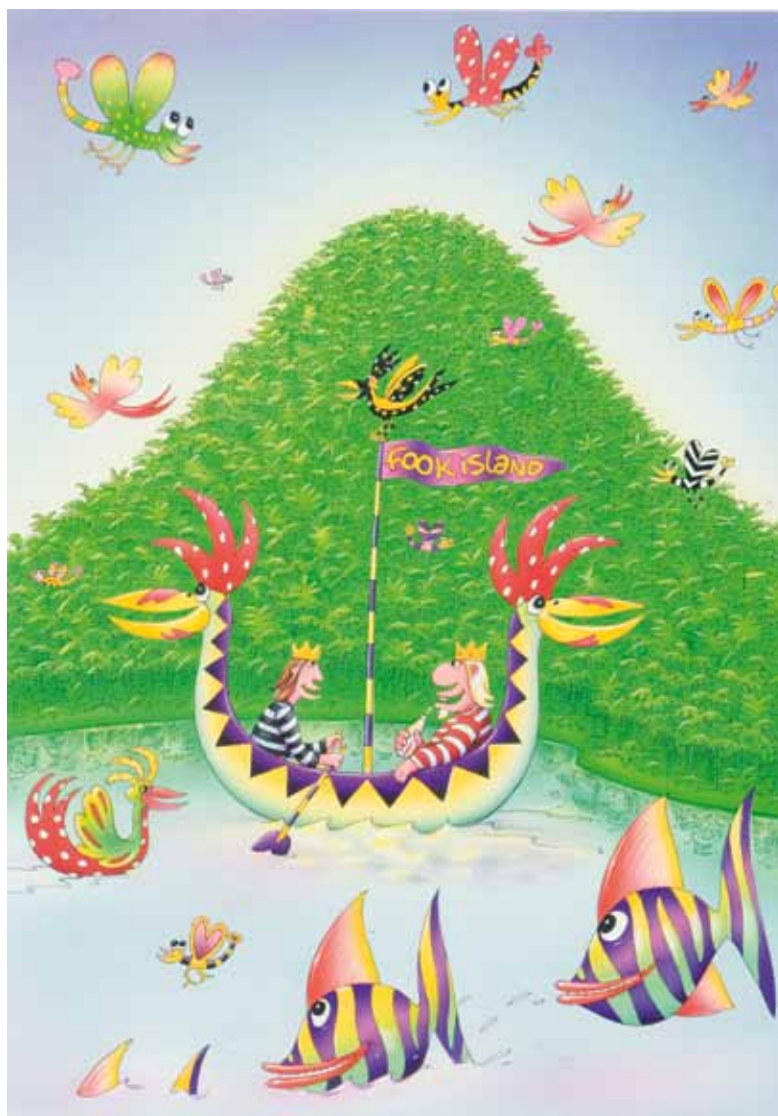
76 by 65 cm

**R40 000–60 000**

PROVENANCE

The Goodman Gallery, Johannesburg.





325

Norman Clive CATHERINE

SOUTH AFRICAN 1949–

*Norman King Norman and Ferd III*

signed and dated '88

airbrush

36,5 by 26 cm

R30 000–40 000

326

Walter Whall BATTISS

SOUTH AFRICAN 1906–1982

*Females*

signed, numbered 20/30 and inscribed  
with the title in pencil in the margin  
screenprint in colour  
41 by 55,5 cm

R18 000–24 000



326

327

Walter Whall BATTISS

SOUTH AFRICAN 1906–1982

*Nudes*

signed, numbered 5/30 and inscribed  
with the title in pencil in the margin  
screenprint in colour  
41 by 60 cm

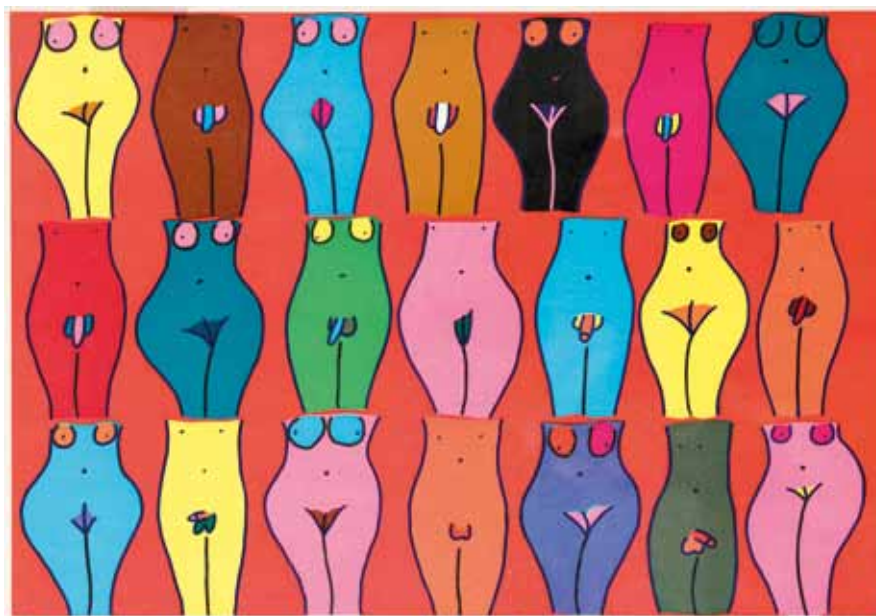
R20 000–30 000

EXHIBITED

Standard Bank Gallery, Johannesburg,  
*Walter Battiss Gentle Anarchist*, 20 October  
to 3 December 2005, page 154, illustrated in  
colour.

LITERATURE

Karin Skawran and Michael Macnamara (Eds.)  
*Walter Battiss*, Johannesburg, 1985, page 170,  
plate 42, illustrated in colour.



327

328

Bronwen FINDLAY

SOUTH AFRICAN 1953–

*Strelizias in a Landscape*

signed and dated 1985

oil on canvas

136,5 by 170 cm

R20 000–30 000



328

329

Jan (Johannes Wilhelmus)

DINGEMANS

SOUTH AFRICAN 1921–2001

*African Women*

signed

oil on canvasboard

53 by 43,5 cm

R12 000–15 000



329

330

Jan (Johannes Wilhelmus)

DINGEMANS

SOUTH AFRICAN 1921–2001

*Five Congolese Women*

signed

oil on board

39 by 27,5 cm

R7 000–10 000

331

Jan (Johannes Wilhelmus)

DINGEMANS

SOUTH AFRICAN 1921–2001

*A Group of Congolese Women*

signed

oil on board

29,5 by 49,5 cm

R8 000–12 000





332

Robert Griffiths **HODGINS**

SOUTH AFRICAN 1920–2010

*Jolly Old Girl*

signed, dated 2003 and inscribed with the  
title on the reverse

oil on canvas

30,5 by 30,5 cm

**R40 000–60 000**



333

**333**

Robert Griffiths **HODGINS**

SOUTH AFRICAN 1920–2010

*Bitter Old Woman*

signed, dated 2003 and inscribed with  
the title on the reverse

oil on canvas  
30,5 by 30,5 cm

**R40 000–60 000**

**334**

Norman Clive **CATHERINE**

SOUTH AFRICAN 1949–

*Identikit*

signed, dated 83, numbered 35/40 and  
inscribed with the title in pencil in the margin

silkscreen in colours  
47,5 by 56,5 cm

**R4 000–6 000**

335

Editions for ARTTHROB

*Portfolio Three*

**Willem Boshoff**, *Political Candyfloss* (Left and Right), 2009, etching.

**Lisa Brice**, *Untitled*, signed, dated 2008 and numbered 5/60, lithograph in colours.

**Robert Hodgins**, *Miss Priss*, signed, dated '09, numbered 5/60 and inscribed with the title, lithograph in colours.

**Clive van den Berg**, *Cyber Erotics*, signed, dated 2009, numbered 5/60 and inscribed with the title, lithograph in colours.

**Candice Breitz**, *Ex Libris South Africa*, accompanied by a certificate of authenticity: signed, dated Berlin, 25 February 2010 and numbered 5/60, Cibachrome photograph.

**William Kentridge**, *Untitled*, signed and numbered 5/60, a hand-printed lithograph printed on collaged Chambers Encyclopedia book pages. in an archival linen box: 87,5 by 67 cm (6)

R40 000–60 000



*Editions for ArtThrob was started with two aims in mind. The first, was to make top quality original prints from the country's leading artists available at affordable prices. The second, was to provide a source of funding for [www.artthrob.co.za](http://www.artthrob.co.za).*

*ArtThrob is a not-for-profit website on the contemporary art scene in South Africa. In its fifteen years of existence, it has become internationally recognised as the most consistently authoritative voice in the field, attracting over 20 000 page views monthly from a unique niche audience. Half these viewers are South Africans, but the other half come from all over the world. Quotes from ArtThrob, often found in art journals and books, reflect the high status and respect in which the website is held.*



336

Zwelethu MTHETHWA

SOUTH AFRICAN 1960–

*Untitled*

2002

Lambda print

43,5 by 60 cm

R5 000–8 000

337

Edoardo Daniele VILLA

SOUTH AFRICAN 1915–2011

*Villa at 90*

Nel, K; Burroughs, E & Von Maltitz, A (Eds), Jonathan Ball and Shelf Publishing, Johannesburg, 2005, Collector's Special Edition limited to 50 copies, this number 20, signed by the artist, full-leather binding, in a wooden slipcase inset with a bronze plaque by Edoardo Villa, signed, dated 1965 and numbered 20/50.

slipcase size: 35,5 by 30 cm

R20 000–30 000



337

338

Cecil Edwin Frans SKOTNES

SOUTH AFRICAN 1926–2009

*The Assassination of Shaka*

A portfolio of forty three woodcuts by Cecil Skotnes with captions by Steven Gray, 1973, with title and preface, edition limited to 225 copies, this set numbered 73/225, each woodcut signed, dated 73 and numbered 73/225 in pencil in the margin, the title page signed and dated by the artist and signed by the poet, in an original linen portfolio.

woodcuts in colour  
sheet size: 50 by 33,2 cm

R30 000–40 000



338

339

Cecil Edwin Frans SKOTNES

SOUTH AFRICAN 1926–2009

*The White Monday Disaster*

A portfolio of thirteen woodcuts by Cecil Skotnes with text by Steven Gray, 1975, with title and preface, edition limited to 125 copies and 25 artist's proofs, this set numbered 8/125, each woodcut signed and dated 75 in pencil in the margin, the title page signed by the artist and poet, in an original linen portfolio.

woodcuts in colour  
sheet size: 56 by 73,5 cm

R25 000–30 000

340

Cecil Edwin Frans SKOTNES

SOUTH AFRICAN 1926–2009

*Man's Gold*

A portfolio of twenty eight woodcuts by Cecil Skotnes, 6 poems and text by Stephen Grey, based on ideas by Denis Godfrey. These woodcuts were printed from original blocks in 2 to 5 colours on Zerkall Buetten paper by Egon Guenther, each copy is hand bound in Oasis goat skin by Peter Carstens, Johannesburg, August 1975 – January 1979, edition limited to 75 copies, this set numbered 73/75, each woodcut signed and numbered 73/75 in pencil in the margin, the title page signed by the artist and poet.

woodcuts in colour  
sheet size: 38,5 by 53,5 cm

R25 000–40 000



339



340