

Strauss&co

Fine Art Auctioneers | Consultants



PUBLIC AUCTION BY

**Strauss&co**

Fine Art Auctioneers | Consultants

# Fine South African, British and Continental Art

Monday 16 May 2011

Day Sale 3.00 pm

Evening Sale 8.00 pm

## VENUE

Country Club Johannesburg, Woodmead

Corner Lincoln Road & Woodlands Drive, Woodmead

GPS Co-ordinates: Latitude: 26.0519 S – Longitude: 28.0675 E

## PREVIEW

Friday 13 May to Sunday 15 May from 10.00 am to 5.00 pm

## WALKABOUTS

Conducted by Stephan Welz and Mary-Jane Darroll

Saturday 14 and Sunday 15 May at 11.00 am

## ENQUIRIES

+27 (0) 79 407 5140

## CONTACT NUMBERS DURING VIEWING AND AUCTION

Tel: +27 (0) 79 407 5140 and +27 (0) 79 367 0637

Fax: +27 (0) 11 728 8247

ILLUSTRATED CATALOGUE R100.00

ALL LOTS ARE SOLD SUBJECT TO THE CONDITIONS OF BUSINESS PRINTED AT THE BACK OF THIS CATALOGUE

DIRECTORS: E BRADLEY (CHAIRMAN),  
M-J DARROLL, V PHILLIPS,  
(B GENOVESE, A PALMER ALTS)  
CB STRAUSS AND SA WELZ (MD)

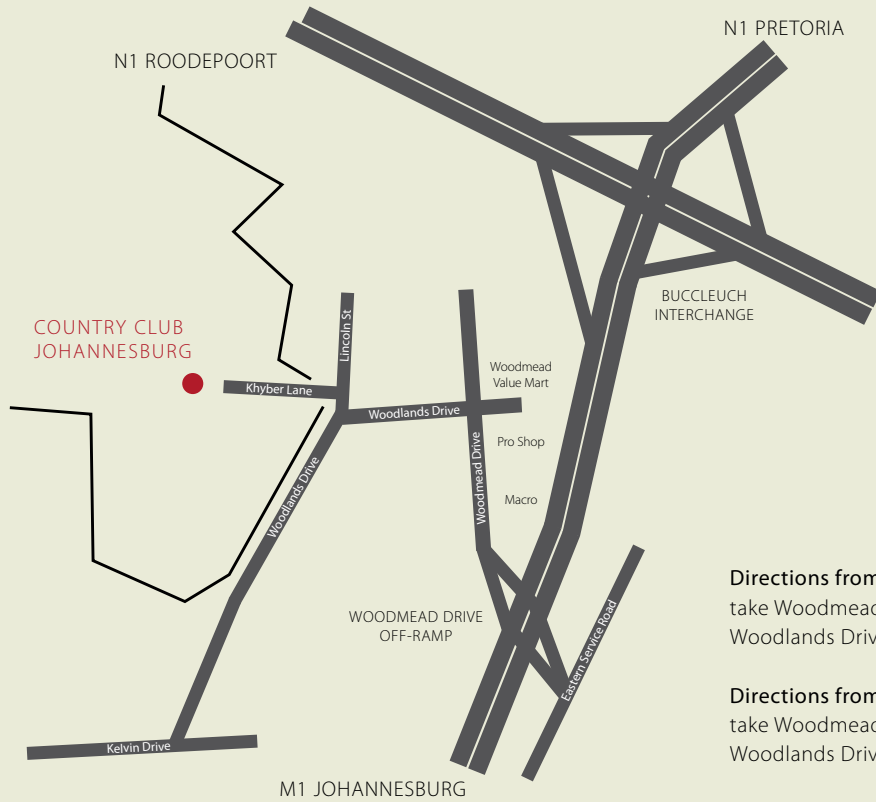


# Contents

- 3 Auction Information
- 6 Map
- 7 Explanation of Cataloguing Practice
- 8 Guide for Bidding
- 9 Specialists, Services and Sale Information
- 13 Forthcoming Auctions in Johannesburg and Cape Town
- 16 **DAY SALE**  
Fine South African, British, Continental and American Art at 3 pm  
Lots 1–200
- 88 **EVENING SALE**  
Important South African Art at 8 pm  
Lots 201–325
- 232 Conditions of Business
- 243 Bidding Form
- 244 Shipping Instruction Form
- 246 Catalogue Subscription Form
- 248 Auction Results
- 252 Artist Index

PAGE 2  
Lot 207 Jacob Hendrik Piernef, *A Landscape with Trees* (detail)

OPPOSITE  
Lot 286 Alexis Preller, *A Still Life with Eggs* (detail)



**Directions from Pretoria:** N1 South Johannesburg, M1 South Johannesburg, take Woodmead Drive off-ramp, right onto Woodmead Drive, left into Woodlands Drive, right into Lincoln Street, first left into Country Club.

**Directions from Johannesburg CBD / Sandton:** M1 North Pretoria, take Woodmead Drive off-ramp, left onto Woodmead Drive, left into Woodlands Drive, right into Lincoln Street, first left into Country Club.

Preview and Auction at  
 Country Club Johannesburg, Woodmead  
 Corner Lincoln Road & Woodlands Drive, Woodmead

# Explanation of Cataloguing Practice

The terms used in this catalogue have the meanings ascribed to them below. Any statement as to the authorship, attribution, origin, date, age, provenance and condition is a statement of opinion and should not be taken as a statement of fact. Please read the Conditions of Business printed in this catalogue, with particular reference to paragraph 2. Buyers are advised to inspect the property themselves. Condition reports are available on request.

While the use of these terms and their definitions are based upon careful study and represent the opinion of specialists, Strauss & Co and the consignor assume no risk, liability and responsibility for the authenticity of authorship of any lot in this catalogue described by these terms.

## **'Name of the artist ...'**

In Strauss & Co's opinion a work by the artist.

## **'Attributed to ...'**

In Strauss & Co's opinion probably a work by the artist in whole or in part.

## **'Studio of ...'**

In Strauss & Co's opinion a work executed in the artist's studio but not necessarily under his supervision.

## **'Circle of ...'**

In Strauss & Co's opinion a work by an as yet unidentified hand, closely associated with the named artist and showing his influence.

## **'Follower of ...'**

In Strauss & Co's opinion a work executed in the artist's style but not necessarily his pupil.

## **'Manner of ...'**

In Strauss & Co's opinion a work executed in the artist's style and of a later date.

## **'After ...'**

In Strauss & Co's opinion a copy of known work by the artist but of any date.

## **'signed ..., dated ..., inscribed ...'**

In Strauss & Co's opinion the work has been signed, dated or inscribed by the artist.

## **'Bears a signature ..., dated... and/or inscribed ...'**

In Strauss & Co's opinion the signature, date and/or inscription are by a hand other than that of the artist.

# Guide for Bidding

## Conditions of Sale

Strauss & Co's Conditions of Sale are set out in this catalogue. Bidders are strongly advised to read these and familiarise themselves with the terms and information relating to buying at auction. It is important to note that Strauss & Co act on behalf of the seller. Please refer to Sections 2 and 3 of the Conditions of Business set out in this catalogue.

## Estimates

Pre-sale estimates are based upon the current market prices achieved at auction for comparable property, condition, rarity and provenance. Any bid between the high and the low estimate will, in Strauss & Co's opinion, stand a fair chance of success. Estimates are exclusive of Buyer's Premium and VAT. Printed estimates in the catalogue may be altered and are subject to revision.

## Reserves

Lots may be subject to a reserve which is a confidential figure arrived at between Strauss & Co and the seller and below which a lot may not be sold. The reserve is generally calculated at a percentage below the low estimate but may not exceed the low estimate.

## Buyer's Premium

Strauss & Co charges a premium to the buyer on the final bid price calculated at 10% for lots selling over R10 000, and 15% for lots selling at and below R10 000. VAT is payable on the Premium at the applicable rate.

## Pre-auction Viewing

This is open to the public free of charge. Strauss & Co's specialists are available to give condition reports or advice at viewings or by appointment.

## Bidding at the Auction

The auctioneer will accept bids from those present in the saleroom, by absentee written bids left in advance or from telephone bidders. The auctioneer may bid on behalf of the seller up to the amount of the reserve, by placing consecutive or responsive bids for a lot.

In person: Prior to the sale, bidders are required to complete a registration card in order to obtain a bidding number and to produce some form of identification, for example, ID document, driving licence, passport or proof of current address. The onus is on the bidder to ensure that the auctioneer is aware of the bid and that the correct lot number, bidder's number and price are called out.

Absentee written bids: These are written instructions from prospective buyers directing Strauss & Co to bid on their behalf up to a specific amount for each lot. Although bidders are advised to record the maximum limit to which they will bid they may well be successful in securing the lot at a lower figure, depending on the interest in the lot. In the event of an identical bid, the earliest will take precedence. Telephoned Absentee bids must be confirmed before the sale in writing. Please ensure that Absentee bids are placed at least 24 hours before the sale.

Telephone bids: Bidders who are unable to attend the auction may arrange to bid on the telephone. As the number of telephone lines is limited, it is advisable to book a telephone at least 24 hours before the sale. In the event of a breakdown in the telephone communications, it is advisable to leave a maximum bid as a safeguard. Telephone bids may be recorded.

## Payment and Collection of Purchases

All lots sold will be invoiced to the name and address that appear on the registration forms.

## Payment

Successful bidders are required to make payment for their purchases immediately after the sale. Pictures will be released on proof of payment.

## Methods of Payment

Payment may be made by:-

- a) Cheque (by prior arrangement)
- b) Electronic Transfer
- c) Credit cards acceptable to Strauss & Co (Mastercard and Visa)
- d) Direct Cash deposit into our Current Account

Strauss & Co  
Standard Bank: Killarney  
Bank code: 007205  
Current Account No: 00 1670891  
SBZA ZA JJ

## Collections

All purchases must be removed by 12 noon on the day following the sale. After this time all purchased lots will be removed to Strauss & Co's premises at The Oval, First Floor, Colinton House, 1 Oakdale Road, Newlands or to Elliott International, 8 Ferrule Street, Montague Gardens, and may be subject to removal, handling and storage fees.



# Specialists, Services and Sale Information



Stephan Welz  
**Managing Director**  
*Paintings*  
Mobile: +27 (0) 82 330 0798  
stephan@straussart.co.za



Mary-Jane Darroll  
**Director**  
*Paintings*  
Mobile: +27 (0) 82 567 1925  
mj@straussart.co.za



Ann Palmer  
**Director**  
*Paintings*  
Mobile: +27 (0) 82 468 1098  
ann@straussart.co.za



Emma Bedford  
**Senior Specialist**  
*Paintings*  
Mobile: +27 (0) 83 391 7235  
emma@straussart.co.za



Vanessa Phillips  
**Director**  
*Furniture, Silver and Ceramics*  
Mobile: +27 (0) 72 445 4717  
vanessa@straussart.co.za



Bina Genovese  
**Director**  
*Client Services and Media*  
Mobile: +27 (0) 83 680 9944  
bina@straussart.co.za



Debbie Watson  
**Office Manager, Johannesburg**  
Tel: +27 (0)79 407 5140  
debbie@straussart.co.za



John Withers  
**Accounts, Johannesburg**  
Tel: +27 (0)79 407 5140  
john@straussart.co.za



Sipho Yika  
**Store Manager, Johannesburg**  
Tel: +27 (0)79 407 5140  
sipho@straussart.co.za



Debbie Isaacs  
**Administrator, Johannesburg**  
Mobile: +27 (0)79 407 5140  
debbiei@straussart.co.za



Jacqui Carney  
**Intern, Johannesburg**  
Tel: +27 (0)79 407 5140  
jacqui@straussart.co.za

## **Auction**

Monday 16 May 2011  
Day Sale 3.00 pm (Lots 1–200)  
Evening Sale 8.00 pm (Lots 201–325)

## **Venue**

**Country Club Johannesburg, Woodmead**  
Corner Lincoln Road & Woodlands Drive,  
Woodmead

## **Preview**

Friday 13 May to Sunday 15 May  
10.00 am to 5.00 pm

## **Walkabouts**

Stephan Welz and Mary-Jane Darroll  
Saturday 14 and Sunday 15 May at 11.00 am

## **Enquiries, Catalogues and Bids Office**

Tel: +27 (0) 79 407 5140  
Fax: +27 (0) 11 728 8247  
jhb@straussart.co.za

## **Contact Numbers during Viewing and Auction**

Tel: +27 (0) 79 407 5140 and  
+27 (0) 79 367 0637  
Fax: +27 (0) 11 728 8247

## **Absentee and Telephone Bids**

Debbie Watson  
debbie@straussart.co.za

## **Payment**

John Withers  
john@straussart.co.za

Debbie Watson  
debbie@straussart.co.za

www.straussart.co.za

Two years of outstanding achievements and records

2009



Frans OERDER, R1 782 400



Irma STERN, R7 241 000



Wolf KIBEL, R1 225 400



Irma STERN, R5 792 800



Dorothy KAY, R1 448 200



Johannes MEINTJIES, R423 320



Freida LOCK, R1 002 600



Jean WELZ, R1 225 400

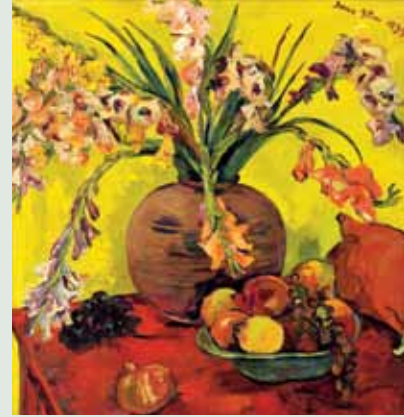
2010 the year of the Gladioli, world record for Stern



Irma STERN, R7 575 200



Irma STERN, R11 140 000



Irma STERN, R13 368 000



Anton VAN WOUW, R2 228 000

2010



Maud SUMNER, R2 450 800



Jacob Hendrik PIERNEEF, R4 678 800



Maggie LAUBSER, R2 673 600

Over 150 years collective experience, expertise and excellence



Cecil SKOTNES, R2 005 200

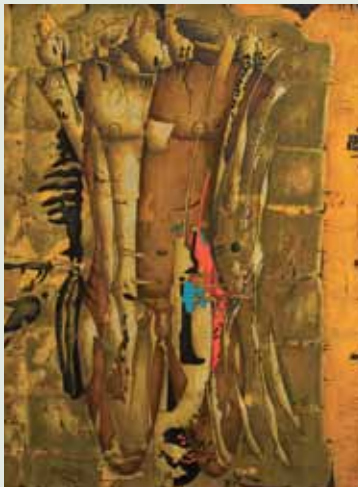
2010



Walter BATTISS, R1 336 800



Stanley PINKER, R2 450 800



Alexis PRELLER, R2 339 400



Jane ALEXANDER, R1 058 300



William KENTRIDGE, R612 700



Jacob Hendrik **PIERNEEF**, R10 583 000



Pieter **WENNING**, R1 782 400



Irma **STERN**, R10 583 000

# 2011

## An invitation to consign

Cape Town, Monday 26 September 2011

**Important South African Art,  
Furniture, Silver, Ceramics and Glass**

Closing date for entries: mid-July

Johannesburg, Monday 7 November 2011

**Important South African,  
British and Continental Art**

Closing date for entries: end August

### Enquiries:

Cape Town 021 683 6560 / 078 044 8185  
ct@straussart.co.za

Johannesburg 079 407 5140  
jhb@straussart.co.za

[www.straussart.co.za](http://www.straussart.co.za)

# Strauss & co

Fine Art Auctioneers Consultants

South Africa's premier fine art auction house