



Country Club Johannesburg, Woodmead

16 May 2011 – 3 pm

**Fine South African,
British, Continental
and American Art**

Day Sale: Lots 1-200

OPPOSITE

Lot 283 Cecil Skotnes, *A Still Life with Vessels and Fruit on a Table*.

British, Continental and American Paintings, Drawings, Watercolours and Prints



1

Jim **DINE**

AMERICAN 1935–

Two Hearts at Sunset

signed, dated 05 and numbered 21/200 in white
crayon

lithograph in colour

sheet size: 51,5 by 67 cm

R25 000 – 40 000

PROVENANCE

The White House Gallery, Johannesburg.

2

Jim **DINE**

AMERICAN 1935–

Owl

signed, dated 1996 and numbered 5/20 in pencil
in the margin

etching and aquatint

30,5 by 19 cm

R25 000 – 35 000

3

David **HOCKNEY**

BRITISH 1937–

To Remain

signed, dated 66 and numbered 74/75 in pencil in the margin
etching with aquatint on Crisbrook paper
34,5 by 22 cm

R12 000 – 18 000

From *Fourteen Poems* by C.P. Cavafy.
Published and printed by Editions Alecto,
London.



4

David **HOCKNEY**

BRITISH 1937–

According to Prescriptions of Ancient Magicians

signed, dated '66 and numbered 2/75 in pencil in the margin
etching
35,5 by 22 cm

R15 000 – 25 000

From *Fourteen Poems* by C.P. Cavafy.



5

David **HOCKNEY**

BRITISH 1937–

In the Dull Village

signed, dated 66 and numbered 56/75 in pencil in the margin
etching
34,5 by 22 cm

R15 000 – 25 000

From *Illustrations for Thirteen poems* by
C.P. Cavafy.





6

Joan **MIRÓ**

SPANISH 1893–1983

La Melodie Acide IV

1980

signed and numbered 15/20 in pencil in the margin

lithograph in colour

sheet size: 33 by 25 cm

R15 000 – 20 000

7

Joan **MIRÓ**

SPANISH 1893–1983

La Melodie Acide VIII

signed and numbered 15/20 in pencil in the margin

lithograph in colour

sheet size: 33 by 25 cm

R15 000 – 20 000



7

8

Henry Spencer **MOORE**

BRITISH 1898–1986

Three Sisters (Cramer 621)

1981

signed and numbered 7/15 in pencil in the margin

lithograph in colours

35 by 25 cm

R15 000 – 20 000

This work was published by Raymond Spencer and printed by J E Wolfensberger, Zurich in 1981 in a limited edition of 50 hand-signed and numbered lithographs, there were a further 25 proofs.

9

Henry Spencer **MOORE**

BRITISH 1898–1986

Black Seated Figure on Orange Ground (Cramer 80)

1966

signed and numbered 47/180, pencil in the margin, also signed and dated 66 in the plate

lithograph in colour

17 by 16,5 cm

R7 000 – 10 000



9



10



11

10

Henry Spencer **MOORE**

BRITISH 1898–1986

Mother and Child XXV (Cramer 695)

signed and numbered 'PL XXV' 46/65 in pencil in the margin, also signed in the plate.
etching, aquatint, roulette and drypoint in colour
30 by 22,5 cm

R18 000 – 24 000

11

Henry Spencer **MOORE**

BRITISH 1898–1986

Mother and Child VIII (Cramer 678)

1983
signed and numbered 'PL VIII' 61/65 in pencil in the margin, also signed in the plate
etching and aquatint in colour
34,5 by 25 cm

R18 000 – 24 000

Printed by James Collyer and John Crossley, London, 1983–6. Published by Raymond Spencer Company Ltd. for The Henry Moore Foundation.



12

12

Henry Spencer **MOORE**

BRITISH 1898–1986

Mother and Child IV (Cramer 674)

1983
signed and numbered 'PL IV' and numbered 62/65 in pencil in the margin, also signed in the plate
etching and aquatint in colour
31,5 by 24,5 cm

R18 000 – 24 000

Complete

13

Henry Spencer **MOORE**

BRITISH 1898–1986

Mother and Child XI (Cramer 681)

1983
signed, numbered 'PL XI' 7/65 in pencil in the margin, also signed in the plate
etching, aquatint and roulette in colour
34 by 26 cm

R20 000 – 30 000



13



14

14

Henry Spencer **MOORE**

BRITISH 1898–1986

Mother and Child I (Cramer 671)

1983
signed and numbered 'PL I' 46/65 in pencil in the margin, also signed in the plate
etching and aquatint in four colours
31 by 24,5 cm

R18 000 – 24 000



15

Takashi **MURAKAMI** in collaboration with Louis **VUITTON**
JAPANESE/AMERICAN 1963–

Monogramouflage

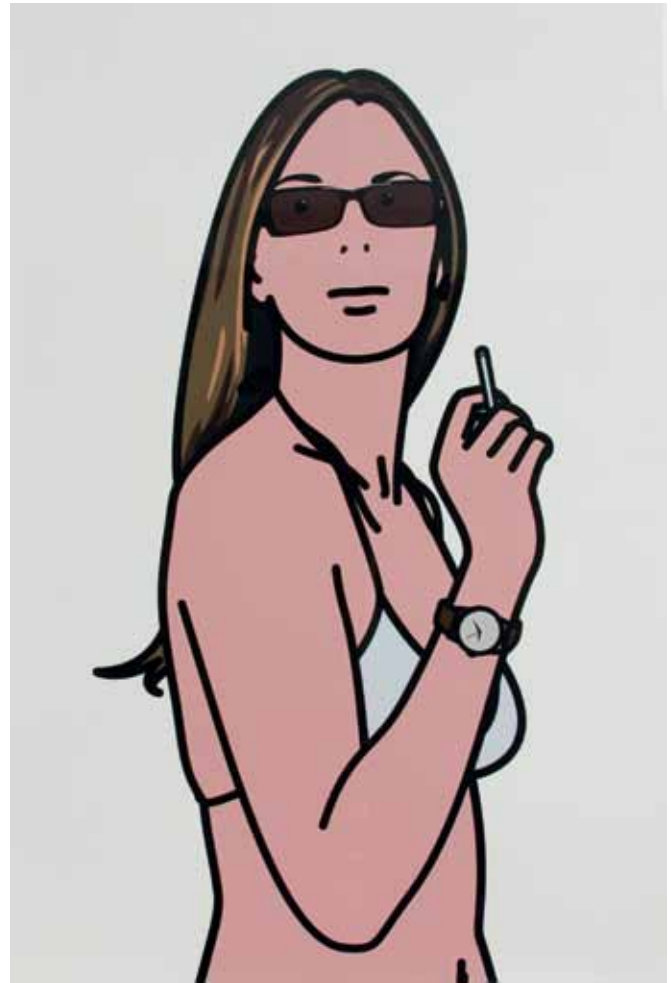
2008

numbered 36/100, signed and dated 08 on the reverse, also bears copyright: Murakami, Brooklyn Museum, New York, 2008. Accompanied by a Certificate of Authenticity. In the original Louis Vuitton fitted case.

screenprint on canvas, on stretcher chassis

40 by 40 cm

R30 000 – 40 000



16

Julian **OPIE**
BRITISH 1958–

Ruth Smoking 3

2006

signed and numbered 23/50 in pencil on the reverse
silkscreen in colour

121 by 79,3 cm

R60 000 – 80 000

South African Drawings, Watercolours, Paintings, Prints and Sculpture



17

Irma **STERN**

SOUTH AFRICAN 1894–1966

A Standing Young Girl

signed
wonderstone
22 by 14 by 8,5cm

R40 000 – 60 000

cf. Neville Dubow, *Irma Stern*, C Struik, Cape Town,
1974, page 53, figure 35.



18

William Mitcheson **TIMLIN**

SOUTH AFRICAN 1892–1943

The Landing of Van Riebeeck

signed and dated 1929 and bears the artist's owl device
pen and ink and watercolour over pencil
52 by 71,5 cm

R70 000 – 90 000



19

19
John Henry **AMSEWITZ**
SOUTH AFRICAN 1882–1942

The Auctioneer

signed
oil on canvas
78 by 60 cm

R50 000 – 70 000

LITERATURE

Stephan Welz, *Art at Auction in South Africa: The Art Market Review 1969–1995*, Johannesburg, 1996, illustrated in colour on page 182.

20
Frans David **OERDER**
SOUTH AFRICAN 1867–1944

A Landscape of Trees

signed
oil on canvas
45 by 54 cm

R35 000 – 50 000



20

21
Jacob Hendrik **PIERNEEF**
SOUTH AFRICAN 1886–1957

An Extensive Landscape with a Tree

signed, dated 1920 and inscribed "impr" in pencil
in the margin
etching and aquatint
19,7 by 27,5 cm

R10 000 – 15 000

22
Jacob Hendrik **PIERNEEF**
SOUTH AFRICAN 1886–1957

Bloekombome (Nilant 76)

signed, inscribed 'impr' and dated 1924 in pencil
in the margin
linocut
35 by 25 cm

R10 000 – 15 000

23
Ernst Karl Erich **MAYER**
SOUTH AFRICAN 1876–1960

A Trek Encampment with Figures Resting under a Tree

signed and dated 1957
watercolour over pencil
19,5 by 28,5 cm

R18 000 – 24 000

24
Pieter Gerhardus **VAN HEERDEN**
SOUTH AFRICAN 1917–1991

An Extensive Landscape with Trees

signed and dated '90
oil on board
16 by 59,5 cm

R20 000 – 30 000



25

25

Jacob Hendrik **PIERNEEF**
SOUTH AFRICAN 1886–1957

Mountains and Trees

gouache and watercolour over pencil
30,5 by 41 cm

R40 000 – 60 000

26

Pieter Gerhardus **VAN HEERDEN**
SOUTH AFRICAN 1917–1991

An Extensive Mountainous Landscape

signed and dated '86
oil on board
22,5 by 40 cm

R18 000 – 24 000



26



27

27

Maud Frances Eyston

SUMNER

SOUTH AFRICAN 1902–1985

A Night Sky

signed

oil on canvas laid-down on board

50,5 by 61,5 cm

R80 000 – 120 000

28

Ernst Karl Erich **MAYER**

SOUTH AFRICAN 1876–1960

Lesotho Farm

signed and dated 1950

oil on canvas laid-down on board

24,5 by 34 cm

R25 000 – 40 000

29

Frans David **OERDER**

SOUTH AFRICAN 1867–1944

A Woman Cooking Outside a Cottage

signed and dated 1901

watercolour

32,5 by 46,5 cm

R12 000 – 18 000

30

Leng **DIXON**

SOUTH AFRICAN 1916–1968

Cape Malay Quarter

signed and inscribed with the title

pen and ink and watercolour with heightening

30,5 by 25 cm

R12 000 – 18 000

31

Pieter Gerhardus **VAN HEERDEN**

SOUTH AFRICAN 1917–1991

Purple Heather

signed and dated '83

oil on canvas laid-down on board

24 by 29 cm

R18 000 – 24 000

32

Gregoire Johannes **BOONZAIER**

SOUTH AFRICAN 1909–2005

A Farm Stall

signed and dated 1982

brush and ink and watercolour over charcoal

37 by 54,5 cm

R25 000 – 35 000

28



32



33

Frans David **OERDER**

SOUTH AFRICAN 1867–1944

A Baby

signed and dated '42
oil on board
39 by 28,5 cm

R25 000 – 40 000

34

Bertha Amy **EVERARD**

SOUTH AFRICAN 1873–1965

*A Swazi Child in Tamboeki Grass
(Lekkerdraai)*

inscribed with the artist's name and title on a
label on the reverse, authenticated by Leonora
Everard-Haden, granddaughter of artist, on the
reverse
oil on canvas
54 by 45 cm

R70 000 – 100 000

PROVENANCE

Leonora Everard-Haden and thence by descent.

35

Cecil **HIGGS**

SOUTH AFRICAN 1900–1986

Mother and Child

signed and dated 1940
oil on canvas
34 by 34cm

R30 000 – 50 000

36

Mary Ellen **HILLHOUSE**

SOUTH AFRICAN 1908–1989

A Head of a Woman

signed and dated 69
oil on canvas
42 by 32,5 cm

R45 000 – 60 000



34

35



37

Christo **COETZEE**

SOUTH AFRICAN 1929–2001

The Bride

signed oil on board, with a removable painted circular disk
34 by 29 cm

R20 000 – 30 000

38

Clement Edmond Theodore Marie

SERNEELS

SOUTH AFRICAN 1912–1991

A Woman with a Bowl of Flowers and a Plate of Fruit

signed and dated 1944
oil on canvas
78,5 by 68 cm

R30 000 – 50 000

PROVENANCE

The Everard Read Gallery, Johannesburg.

36



38





39

39
Alexander ROSE-INNES
SOUTH AFRICAN 1915–1996

Black Lace

signed
oil on canvas
48,5 by 36,5 cm

R60 000 – 90 000



40

40
Alexander ROSE-INNES
SOUTH AFRICAN 1915–1996

Lovers in the Pub

signed
pastel
62 by 49 cm

R40 000 – 60 000

41

Joseph Charles Louis Clement

SENÉQUE

SOUTH AFRICAN 1896–1930

Natal Hills

signed and dated 27; inscribed with the title on the reverse

oil on board

37 by 42,5 cm

R35 000 – 50 000

42

Joseph Charles Louis Clement

SÉNÈQUE

SOUTH AFRICAN 1896–1930

Mont Blanc

signed and dated 24; inscribed with the title on a label on the reverse

oil on board

74 by 61,5 cm

R80 000 – 120 000

PROVENANCE

Johans Borman Fine Art Gallery, Cape Town.

EXHIBITED

Tatham Art Gallery, Pietermaritzburg, *Clement Sênèque Retrospective Exhibition*, 1984, catalogue number 83.

43

William **HART**

SOUTH AFRICAN 1928

Moon River

signed; inscribed with the title and dated 1968 on the reverse

Plaster of Paris relief with oil paint

55 by 43,5 cm

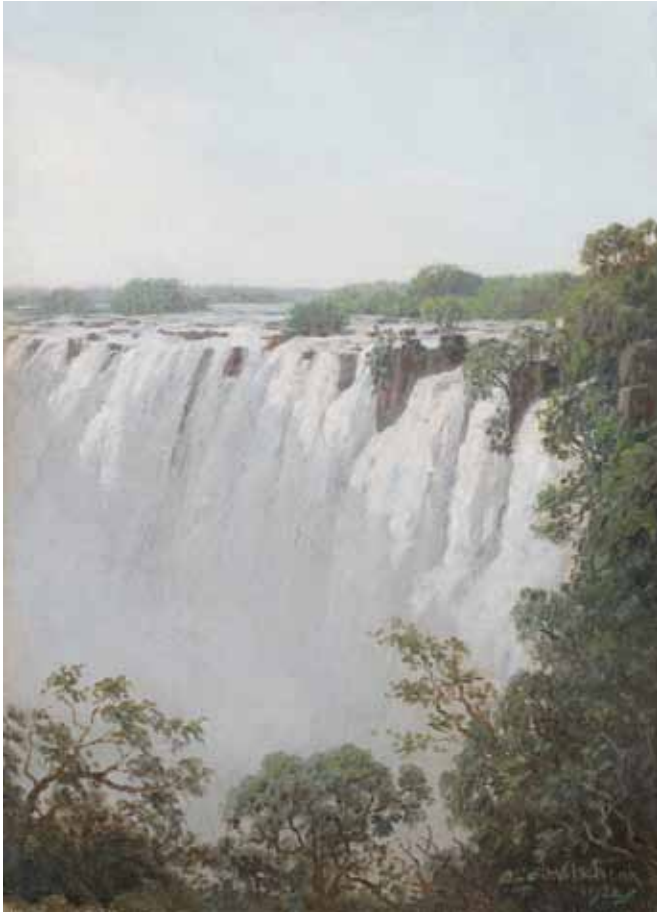
R2 000 – 3 000



41



42



44

44

Jan Ernst Abraham **VOLSCHEK**

SOUTH AFRICAN 1853–1936

Victoria Falls

signed and dated 1924; inscribed with the title on the reverse

oil on canvas laid-down on board

33 by 24 cm

R40 000 – 60 000



45

45

Jan Ernst Abraham **VOLSCHEK**

SOUTH AFRICAN 1853–1936

An Extensive Riversdale Landscape

signed and dated 1935

oil on canvas

34,5 by 29 cm

R50 000 – 80 000



46

46

Jan Ernst Abraham **VOLSCHENK**

SOUTH AFRICAN 1853–1936

Sheep on the Veld

signed and dated 1909; signed, dated 1909 and inscribed with the title on the reverse

oil on canvas

14,5 by 26,5 cm

R40 000 – 60 000

47

Maud Frances Eyston **SUMNER**

SOUTH AFRICAN 1902–1985

Battersea Bridge over the Thames

signed; inscribed with the location on the reverse
ball-point pen and watercolour

46,5 by 60 cm

R25 000 – 35 000

48

Maud Frances Eyston **SUMNER**

SOUTH AFRICAN 1902–1985

A View of the Thames with Boats

signed
pen and ink and gouache

62 by 45,5 cm

R25 000 – 40 000

49



50



51



49

Pieter Gerhardus **VAN HEERDEN**

SOUTH AFRICAN 1917–1991

In the Swartland

signed and dated '84; inscribed with the title on the reverse

oil on canvas laid-down on board

16 by 59,5 cm

R20 000 – 30 000

50

Pieter Gerhardus **VAN HEERDEN**

VAN HEERDEN

SOUTH AFRICAN 1917–1991

Rosh Pinah

signed and dated '78

oil on canvas board

44,5 by 90 cm

R60 000 – 90 000

51

Pieter Gerhardus **VAN HEERDEN**

SOUTH AFRICAN 1917–1991

A Homestead nestled below Mountains

signed

oil on canvas laid-down on board

34 by 43,5 cm

R20 000 – 30 000



52

52

Pranas **DOMSAITIS**

SOUTH AFRICAN 1880–1965

A Karoo Landscape

signed

oil on board

39,5 by 62 cm

R60 000 – 90 000

PROVENANCE

The Wolpe Gallery, Cape Town.



53

53

Edith Luise Mary **KING**

SOUTH AFRICAN 1869–1962

Boschoek in Autumn

inscribed with the artist's name and title on a label on the reverse

watercolour over pencil

24,2 by 31,5 cm

R25 000 – 40 000

cf. Frieda Harmsen, *The Women of Bonnefoi*, *The Story of the Everard Group*, JL van Schaik, Pretoria, 1980, illustrated on page 168, figures 190 and 191.

PROVENANCE

The Everard Read Gallery, Johannesburg.



54

Leonora **EVERARD-HADEN**

SOUTH AFRICAN 1937

A Winter Landscape

signed; inscribed with the artist's name and title on the reverse

oil on board

33 by 49,5 cm

R40 000 – 60 000

PROVENANCE

The Everard Read Gallery, Johannesburg.

55

Georgina **ORMISTON**

SOUTH AFRICAN 1903–1967

An Extensive Landscape

signed and dated 66

mixed media on board

48,5 by 89 cm

R40 000–60 000

54



55



56



57

56

Maud Frances Eyston **SUMNER**

SOUTH AFRICAN 1902–1985

Namibian Desert Scene

signed

oil on canvas

60 by 120 cm

R100 000 – 120 000

57

Pieter Gerhardus **VAN HEERDEN**

SOUTH AFRICAN 1917–1991

An Extensive Landscape, McGregor

signed; inscribed with the title on the reverse

oil on canvas laid-down on board

44,5 by 60 cm

R50 000 – 70 000



58

58
Pieter Gerhardus **VAN HEERDEN**
SOUTH AFRICAN 1917–1991

A Mountainous Landscape

signed and dated 85
oil on board
25 by 30 cm

R18 000 – 24 000



60

59
Gordon Frank **VORSTER**
SOUTH AFRICAN 1924–1988

The Scarecrows

signed
oil on board
69,5 by 90 cm

R30 000 – 40 000

60
Pieter Gerhardus **VAN HEERDEN**
SOUTH AFRICAN 1917–1991

An Aerial View of a Cultivated Valley

signed
oil on canvas laid-down on board
40 by 32 cm

R40 000 – 60 000



62

61

Edward **ROWORTH**

SOUTH AFRICAN 1880–1964

Keurbooms Rivier

signed
oil on canvas-board
29 by 39,5 cm

R14 000 – 18 000

62

Errol Stephen **BOYLEY**

SOUTH AFRICAN 1918–2007

Tidal Creek, Botrivier

signed; inscribed with the title on the reverse
oil on board
39,5 by 50 cm

R25 000 – 40 000



63

63

Errol Stephen **BOYLEY**

South African 1918-2007

A View of Houses across a Lake at Sunset

signed
oil on board
44 by 64 cm

R25 000 – 40 000

64

Titta **FASCIOTTI**

SOUTH AFRICAN 1927–1993

Pholela River, Drakensberg, Natal

signed and dated 87; inscribed with the title on a
label on the reverse
oil on canvas laid-down on board
24,5 by 35 cm

R18 000 – 24 000

65

Titta **FASCIOTTI**

SOUTH AFRICAN 1927–1993

A River Landscape

signed and indistinctly dated 81?
oil on canvas laid-down on board
48,5 by 39 cm

R18 000 – 24 000

66

Pieter Hugo **NAUDÉ**

SOUTH AFRICAN 1868–1941

A Seascape, Hermanus

signed
oil on board
24 by 34 cm

R50 000 – 70 000

67

Pieter Hugo **NAUDÉ**

SOUTH AFRICAN 1868–1941

An Extensive Landscape with a Lake

signed
oil on board
19 by 27,5 cm

R50 000 – 80 000

68

George William **PILKINGTON**

SOUTH AFRICAN 1879–1958

Seascape, Hermanus

signed and dated indistinctly 52?
oil on canvas
29 by 39,5 cm

R10 000 – 15 000



66



67



69

69

George William **PILKINGTON**

SOUTH AFRICAN 1879–1958

A Harbour Scene with Boats and Fishermen

signed and dated 50

oil on board

34 by 44 cm

R15 000 – 20 000

70

Terence John **McCAW**

SOUTH AFRICAN 1913–1978

Kalk Bay Harbour

signed and dated 42

oil on canvas

44 by 47 cm

R25 000 – 35 000

70



71

Bertha Amy **EVERARD**

SOUTH AFRICAN 1873–1965

Harpenden

signed; signed by Leonora Everard-Haden, the artist's granddaughter and inscribed with the title on a label on the reverse
oil on canvas board
32 by 35 cm

R60 000 – 90 000

72

Enslin Hercules **DU PLESSIS**

SOUTH AFRICAN 1894–1978

A City Street Scene

signed
pencil, charcoal and oil on card, laid-down on masonite
34,5 by 44,5 cm

R6 000 – 9 000

73

Clement Edmond Theodore Marie

SERNEELS

SOUTH AFRICAN 1912–1991

Sienna

signed and dated 74
oil on canvas
67 by 77 cm

R40 000 – 60 000

74

Enslin Hercules **DU PLESSIS**

SOUTH AFRICAN 1894–1978

***The View from Moses Kottler's House,
Westcliff Drive, Johannesburg***

signed and dated '73; inscribed with the location on the reverse
oil over charcoal on canvas board
44 by 55 cm

R18 000 – 24 000



71

75

Pauline Augusta Wilhelmina

SPILHAUS

SOUTH AFRICAN 1878–1967

A Cape Cottage in a Landscape with Trees

signed with the initials
oil on board
25,5 by 29 cm

R20 000 – 30 000



76



77

76

Pieter Gerhardus **VAN HEERDEN**

SOUTH AFRICAN 1917–1991

A House with Figures

signed

oil on canvas

39,5 by 50 cm

R40 000 – 60 000

77

Pieter Gerhardus **VAN HEERDEN**

SOUTH AFRICAN 1917–1991

Winter Sun, Dal Josafat

signed and dated '51; inscribed with the artist's
name and the title on the reverse

oil on canvas

40 by 50 cm

R40 000 – 60 000



78

78

Alexander **ROSE-INNES**

SOUTH AFRICAN 1915–1996

Cottages, Arniston

signed; signed and inscribed with the
title on the reverse

oil on canvas

45 by 55 cm

R90 000 – 120 000

79

Pieter Gerhardus **VAN HEERDEN**

SOUTH AFRICAN 1917–1991

Figures and Houses on Wash-day

signed and dated indistinctly 57
oil on canvas laid-down on board
24,5 by 29,5 cm

R20 000 – 30 000



79



80



81

80

Pieter Gerhardus **VAN HEERDEN**

SOUTH AFRICAN 1917–1991

*A Cape Farmhouse with a Mother and
Children Tending a Vegetable Garden*

signed and dated 49

oil on canvas

38,5 by 48 cm

R40 000 – 60 000

81

Sidney **GOLDBLATT**

SOUTH AFRICAN 1919–1979

A Village

signed

oil on board

60 by 49,5 cm

R30 000 – 40 000



82

82

Pieter Gerhardus **VAN HEERDEN**

SOUTH AFRICAN 1917–1991

Winter, Paarl

signed and dated 49; inscribed with the title on a label on the reverse

oil on canvas

40 by 50 cm

R60 000 – 90 000

83

George **ENSLIN**

SOUTH AFRICAN 1919–1972

A View of Cottages on Wash-day

signed and dated '52

oil on board

33 by 45,5 cm

R25 000 – 40 000

83



84

George **ENSLIN**

SOUTH AFRICAN 1919–1972

Houses beneath a Hill

oil on board
43,5 by 57 cm

R30 000 – 50 000

85

David Johannes **BOTHA**

SOUTH AFRICAN 1921–1995

District Six Street Scene with Figures

signed
oil on board
27 by 38,5 cm

R40 000 – 60 000

86

Kenneth **BAKER**

SOUTH AFRICAN 1931–1995

Bo-Kaap Street Scene with Figures

signed and dated 78
oil on board
48 by 46 cm

R9 000 – 12 000

84



85





87



88

87

Conrad Nagel Doman **THEYS**

SOUTH AFRICAN 1940

An Abandoned House, Western Cape Winter

signed and dated 2007; signed, dated 2007 and
inscribed with the title on the reverse

oil on canvas

37,5 by 45 cm

R50 000 – 70 000

88

Errol Stephen **BOYLEY**

SOUTH AFRICAN 1918–2007

A Cape Dutch Farmhouse

signed

oil on board

49,5 by 75 cm

R30 000 – 50 000



89

89
 Walter Whall **BATTISS**
 SOUTH AFRICAN 1906–1982

An Art Class with a Model
 pen and ink and watercolour
 37 by 26 cm

R20 000 – 30 000



90

90
 Walter Whall **BATTISS**
 SOUTH AFRICAN 1906–1982

School Boys
 signed
 pen and ink and watercolour with heightening
 25 by 28,5 cm

R18 000 – 24 000



91

91
 Gregoire Johannes **BOONZAIER**
 SOUTH AFRICAN 1909–2005
*A Still Life with Ranunculus and Spring Flowers in
 an Earthenware Jug with Pomegranates*

signed and dated 1984
 watercolour over charcoal
 57,5 by 44 cm

R50 000 – 80 000



92

92
 Gregoire Johannes **BOONZAIER**
 SOUTH AFRICAN 1909–2005
A Still Life with Arum Lilies

signed and dated 1988
 oil on canvas over charcoal
 54 by 39 cm

R70 000 – 90 000



94



95

93

Christo **COETZEE**

SOUTH AFRICAN 1929–2001

A Still Life of Fruit in a Bowl

signed and dated 1950

oil on panel

28,6 by 30 cm

R12 000 – 18 000

94

Alexis **PRELLER**

SOUTH AFRICAN 1911–1975

A Rose

signed

oil on canvas laid-down on board

14 by 17 cm

R50 000 – 80 000

“This is one of Alexis Preller’s first paintings, done approximately during 1932–34. He gave it to his sister Minnie as a present. During 1982 Minnie gave it to me as a gesture of friendship.” Johan Deichmann, 20 October, 1982, on a label on the reverse.

95

Otto **KLAR**

SOUTH AFRICAN 1908–1994

A Still Life with Anemones and a Bowl of Fruit

signed

oil on board

29 by 30,5 cm

R40 000 – 60 000

96

Alice **TENNANT**

SOUTH AFRICAN 1890–1976

A Still Life of Proteas

signed
oil on board
47,5 by 56 cm

R7 000 – 10 000

97

Zakkie (Zacharias) **ELOFF**

SOUTH AFRICAN 1925–2004

Sunflowers

signed and dated 47
oil on canvas
58 by 40,5 cm

R35 000 – 45 000

98

Florence Louise Josephine **ZERFFI**

SOUTH AFRICAN 1882–1962

*The Artist's Studio with a Still Life of
Sunflowers*

signed and dated 47
oil on board
43,5 by 36 cm

R10 000 – 15 000

99

Carl Adolph **BÜCHNER**

SOUTH AFRICAN 1921–2003

*Still Life with Spring Blossoms in a White
Porcelain Vase*

signed
oil on canvas laid-down on board
49 by 39,5 cm

R15 000 – 20 000



100

100

Eugene **LABUSCHAGNE**

SOUTH AFRICAN 1921–1990

A Still Life of Flowers in a White Jug

signed
oil on paper laid-down on board
55,5 by 43,5 cm

R70 000 – 90 000

PLEASE REFER TO TEXT ON LOT 282

101

Alexander ROSE-INNES

SOUTH AFRICAN 1915–1996

Hibiscus

signed; inscribed with the title on the reverse

oil on canvas

70,5 by 50 cm

R80 000 – 120 000

102

Louis VAN HEERDEN

SOUTH AFRICAN 1941

A Still Life with Pomegranates, Glass and a Vase of Flowers

signed; signed on the reverse

oil on canvas

49 by 59 cm

R25 000 – 40 000

103

Frank Sydney SPEARS

SOUTH AFRICAN 1906–1991

A Still Life of Roses in a Glass Vase

signed

oil on cardboard

48,5 by 42,5 cm

R15 000 – 20 000

104

Cecil Edwin Frans SKOTNES

SOUTH AFRICAN 1926–2009

A Still Life with Fruit and Vessels

signed and dated May 94

watercolour

30 by 46,5 cm

R10 000 – 15 000



101

105

Otto KLAR

SOUTH AFRICAN 1908–1994

Huts in a Bushveld Landscape

signed and dated 1940

oil on board

39 by 59 cm

R18 000 – 24 000

106

Terence John MCCAWE

SOUTH AFRICAN 1913–1978

*Lesotho, Figure outside a House with
Snow Covered Peaks in the Distance*

signed; bears the inscription on a label on the

reverse "For 'Gran' Tully with congratulations,

admiration and love from Terence"

oil on canvas laid-down on board

39,5 by 49,5 cm

R70 000 – 100 000

107

Zakkie (Zacharias) ELOFF

SOUTH AFRICAN 1925–2004

Rural Farm Scene

signed and dated 53

oil on board

39 by 57,5 cm

R10 000 – 15 000

108

Fritz KRAMPE

SOUTH AFRICAN 1913–1966

A North African Street Scene

signed with initials

oil on canvas

27 by 41 cm

R30 000 – 50 000



106



108



109

109

Sidney **GOLDBLATT**

SOUTH AFRICAN 1919–1979

A Street Scene with Figures

signed
acrylic on canvas
73 by 58 cm

R30 000 – 50 000

110

Adriaan Hendrik **BOSHOFF**

SOUTH AFRICAN 1935–2007

A Mother and Child on Wash-day in a Farm Courtyard

signed
oil on canvas laid-down on board
29 by 42,5 cm

R25 000 – 40 000

111

Alexander **ROSE-INNES**

SOUTH AFRICAN 1915–1996

A Woman Washing

signed; inscribed with the title on the reverse
oil on canvas
65,5 by 50 cm

R90 000 – 120 000



111

112



112

Cecil Edwin Frans **SKOTNES**

SOUTH AFRICAN 1926–2009

Dancing Figures

signed
carved and painted wood panel
26,3 by 41 cm

R40 000 – 60 000

113

Cecil Edwin Frans **SKOTNES**

SOUTH AFRICAN 1926–2009

Conversation

signed with the initials
carved and painted woodblock
7 by 22 cm

R12 000 – 18 000

114

Willie (William) **BESTER**

SOUTH AFRICAN 1956–

Khayelitsha Barber Shop

signed and dated 97
collage of photocopy, photographs,
corrugated cardboard, sticks and oil on hessian
45 by 85 cm

R25 000 – 40 000

PROVENANCE

Kohn Turner Gallery, Los Angeles.

115

Norman Clive **CATHERINE**

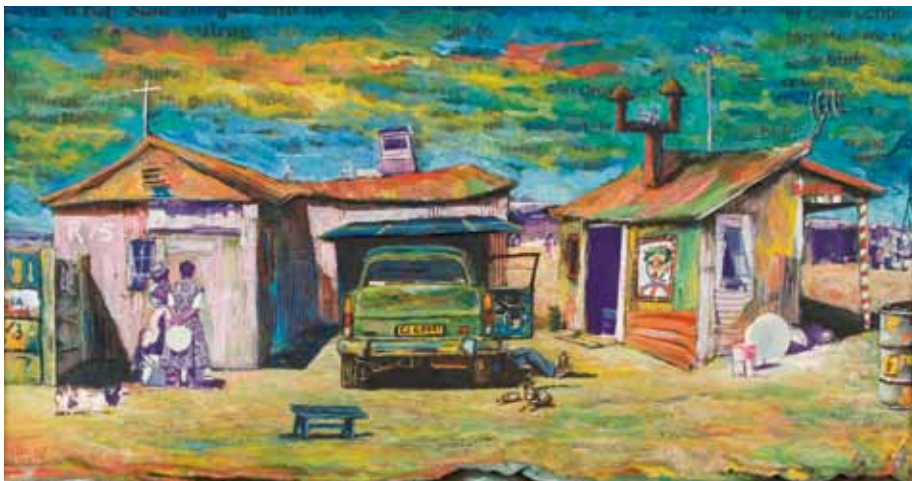
SOUTH AFRICAN 1949–

An Interior with Figures

signed and dated 1989
gouache
41 by 57 cm

R30 000 – 50 000

114



116

Norman Clive **CATHERINE**

SOUTH AFRICAN 1949–

Bermuda Triangle

signed, dated 84 and inscribed with the title
airbrush over pencil
35 by 40 cm

R12 000 – 18 000

LITERATURE

Hazel Friedman, *Norman Catherine*, Goodman
Gallery Editions, Johannesburg, 2000, page 78,
illustrated in colour.

117

Jabulane Sam **NHLENGETHWA**

SOUTH AFRICAN 1955

Maintenance

1976

signed, dated '76, numbered 4/30 and inscribed
with the title in pencil in the margin
lithograph in colours
50 by 70 cm

R12 000 – 18 000

118

Robert Griffiths **HODGINS**

SOUTH AFRICAN 1920–2010

Gun Slinger

signed, dated '04 and inscribed "P/P" in pencil in
the margin, inscribed with the title in the plate
etching and aquatint with hand-colouring
27 by 20,5 cm

R7 000 – 10 000

119

Norman Clive **CATHERINE**

SOUTH AFRICAN 1949–

King Ferd III and Fook Mook

signed and dated 1985
oil on canvas
27,5 by 35,5 cm

R25 000 – 40 000



115



119

120

Esther Nikwambi MAHLANGU

SOUTH AFRICAN 1936–

An Ndebele Blanket

signed and dated 2006

oil on canvas

95 by 127 cm

R15 000 – 20 000



120

121

Esther Nikwambi MAHLANGU

SOUTH AFRICAN 1936–

Ndebele Wall Motifs

each panel signed and dated 2007 acrylic on canvas

each approximately: 20 by 60 cm

(3)

R15 000 – 20 000



122

Wendy MALAN

SOUTH AFRICAN 1945–

The Emperor Bull

signed

enamel on canvas

125 by 190 cm

R7 000 – 10 000



121

123

Edoardo **VILLA**

SOUTH AFRICAN 1915–

Composition with Five Forms

each piece signed with the initials and dated 95
bronze with verdigris patina, resting on a marble base
largest: 17,5 by 13 by 11cm: on a marble base: 2 by 40 by 40 cm

R30 000 – 50 000



124

Stanley **NKOSI**

SOUTH AFRICAN 1945–1988

A Stalking Leopard

signed in the cast, numbered 3/6
bronze with verdigris patina
24 by 47 by 34 cm

R20 000 – 30 000



125

Speelman **MAHLANGU**

SOUTH AFRICAN 1958–2004

A Seated Woman

signed and numbered 9/9
bronze
50 by 16 by 11 cm

R25 000 – 40 000



126

Edoardo VILLA

SOUTH AFRICAN 1915–

A Woman Wrapped in a Blanket

signed, dated 80 and inscribed 'AP'
bronze

32 by 7 by 4,5cm; mounted on a polished
steel base: 3cm by diameter: 7 cm

R20 000 – 30 000



127

127

Sidney GOLDBLATT

SOUTH AFRICAN 1919–1979

A Herd of Cattle

signed
oil on board
90 by 100,5 cm

R50 000 – 60 000

128

Nerine Constantia

DESMOND

SOUTH AFRICAN 1908–1993

*Blanketed Figures in a Basuto
Landscape with Horses*

signed and dated 1957
oil on canvas laid-down on board
75 by 100 cm

R30 000 – 50 000

129

Cecil Edwin Frans

SKOTNES

SOUTH AFRICAN 1926–2009

*Figural Fragments in an
Abstract Landscape*

signed and dated 76
pen and ink and watercolour with
pigment and sand on paper
50,5 by 74 cm

R20 000 – 30 000



128



129

130

Hennie (Hendrik Christiaan) NIEMANN
SOUTH AFRICAN 1941–

Harvesters

signed and dated 97
oil on board
35,5 by 41 cm

R20 000 – 30 000

131

Hennie (Hendrik Christiaan) NIEMANN
SOUTH AFRICAN 1941–

Sowing Seeds

signed and dated 97
oil on board
77 by 49,5 cm

R25 000 – 40 000



131



132

Stefan **AMPENBERGER**

SOUTH AFRICAN 1908–1983

Thaba Nchu

signed and dated 70

oil on board

50 by 60 cm

R12 000 – 16 000

133

Walter Whall **BATTISS**

SOUTH AFRICAN 1906–1982

Limpopo

signed

oil on canvas

25 by 30 cm

R60 000 – 90 000

134

Carl Adolph **BÜCHNER**

SOUTH AFRICAN 1921–2003

Gibraltar

signed

oil on canvas

90 by 90 cm

R35 000 – 50 000

135

Sidney **GOLDBLATT**

SOUTH AFRICAN 1919–1979

An Abstract Composition

signed and dated 1966

acrylic on canvas

90,5 by 100,5 cm

R60 000 – 90 000

133



134



135

136



136

Johannes Petrus MEINTJES

SOUTH AFRICAN 1923–1980

Figures Resting outside a Cape Cottage

signed and dated 61

oil on canvas board

34,5 by 44,5 cm

R40 000 – 60 000

137

Johannes Petrus MEINTJES

SOUTH AFRICAN 1923–1980

Okerlandskap, Grootzeekoegat (JM 1286)

signed and dated 1978; inscribed with the title on the reverse

oil on board

59,5 by 59,5 cm

R60 000 – 90 000

PROVENANCE

Mrs Helena Hill, (Johannes Meintjes's sister-in-law).

138

Aileen LIPKIN

SOUTH AFRICAN 1933–1994

Fungus Growth

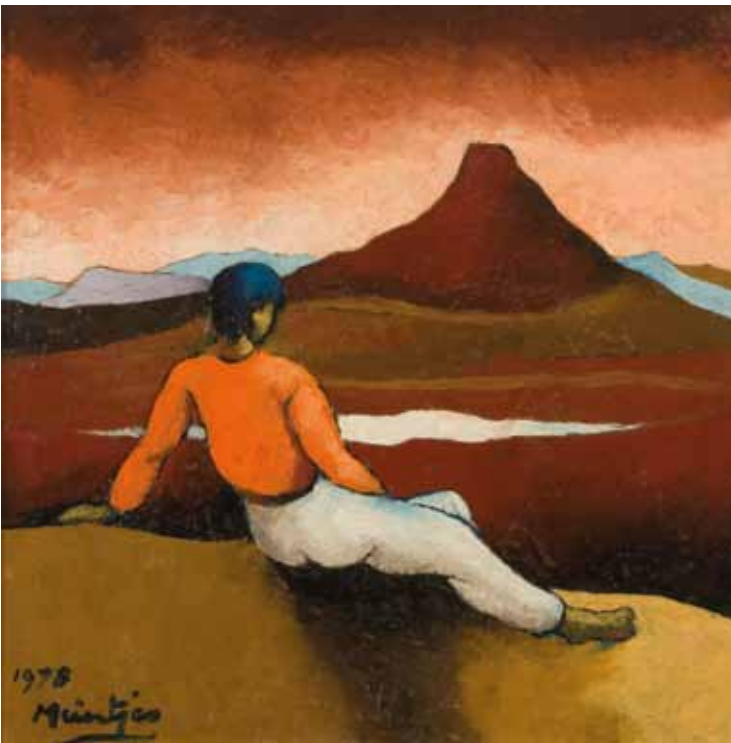
signed

mixed media on board

101,5 by 76 cm

R5 000 – 8 000

137





139



140

139

Bettie **CILLIERS-BARNARD**

SOUTH AFRICAN 1914–2010 SOUTH AFRICAN
1914–2010

Spirit of the Unknown

signed and dated 1973; inscribed with the title on
the stretcher on the reverse
acrylic over charcoal
90 by 90 cm

R30 000 – 50 000

140

Frans Martin **CLAERHOUT**

SOUTH AFRICAN 1919–2006

Figures outside a Church

signed
oil on board
50 by 60 cm

R60 000 – 90 000



141



142

141

Frans Martin **CLAERHOUT**

SOUTH AFRICAN 1919–2006

Houses and Figures

signed
oil on board
49 by 59 cm

R70 000 – 90 000

142

Frans Martin **CLAERHOUT**

SOUTH AFRICAN 1919–2006

A Couple Harvesting Grass and a Donkey

signed
oil on board
49,5 by 59,5 cm

R40 000 – 60 000



143

143
Ephraim Mojalefa **NGATANE**
SOUTH AFRICAN 1938–1971

Penny Whistler

signed
mixed media on board
70,5 by 58 cm

R70 000 – 100 000



144

144
Ephraim Mojalefa **NGATANE**
SOUTH AFRICAN 1938–1971

Two Penny Whistlers

signed and dated '70
mixed media on board
57,5 by 70 cm

R70 000 – 100 000

145

Bettie CILLIERS-BARNARD

SOUTH AFRICAN 1914–2010

Wash-day

signed
oil on canvas
69,5 by 89,5 cm

R50 000 – 70 000



145

146

Bettie CILLIERS-BARNARD

SOUTH AFRICAN 1914–2010

Abstract Composition with Fish

signed and dated 1955; dated 1955
on the reverse
oil on canvas
39,5 by 49,5 cm

R30 000 – 50 000



146

147

Christo COETZEE

SOUTH AFRICAN 1929–2001

Changing Symbol of the Majorca Flower

signed, numbered 14, dated SA 76, inscribed
with the title and marked manipulated image
gouache and brush, and manipulated spliced
and rewoven image
45,5 by 34,5 cm

R7 000 – 10 000



148

148

Christo **COETZEE**

SOUTH AFRICAN 1929–2001

David

signed and dated 68; signed, dated 29th March 68, "Finestrat, Spain" and inscribed with the title on the reverse
acrylic with collage on canvas
87,5 by 114,5 cm

R70 000 – 100 000

149

Christo **COETZEE**

SOUTH AFRICAN 1929–2001

Abstract Composition

signed, dated Paris, "18/4/66" on the reverse mixed media with coins
78 by 39 cm

R25 000 – 40 000

150

Carl Adolph **BÜCHNER**

SOUTH AFRICAN 1921–2003

A Seated Woman

signed
oil on canvas laid-down on board
25,2 by 16,4 cm

R8 000 – 12 000



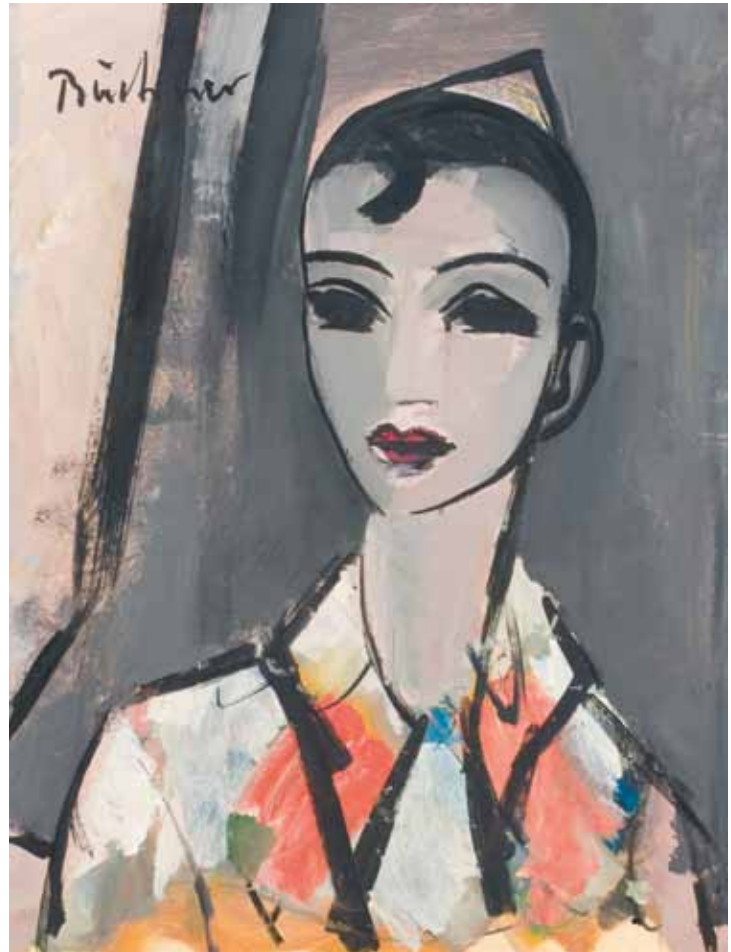
151

151
Maurice Charles Louis **VAN ESSCHE**
SOUTH AFRICAN 1906–1977

A Harlequin

signed
oil on board
46 by 22 cm

R40 000 – 50 000



152

152
Carl Adolph **BÜCHNER**
SOUTH AFRICAN 1921–2003

A Harlequin

signed
acrylic on board
64 by 49 cm

R80 000 – 120 000



153

153

Carl Adolph **BÜCHNER**

SOUTH AFRICAN 1921–2003

A Seated Harlequin

signed

mixed media on canvas

89,5 by 89,5 cm

R40 000 – 60 000



154

154

Carl Adolph **BÜCHNER**

SOUTH AFRICAN 1921–2003

A Harlequin with a Mandolin

signed

acrylic on canvas

90,5 by 90,5 cm

R50 000 – 70 000

155

Carl Adolph **BÜCHNER**

SOUTH AFRICAN 1921–2003

A Harlequin with a Mandolin

signed

oil on paper laid-down on board

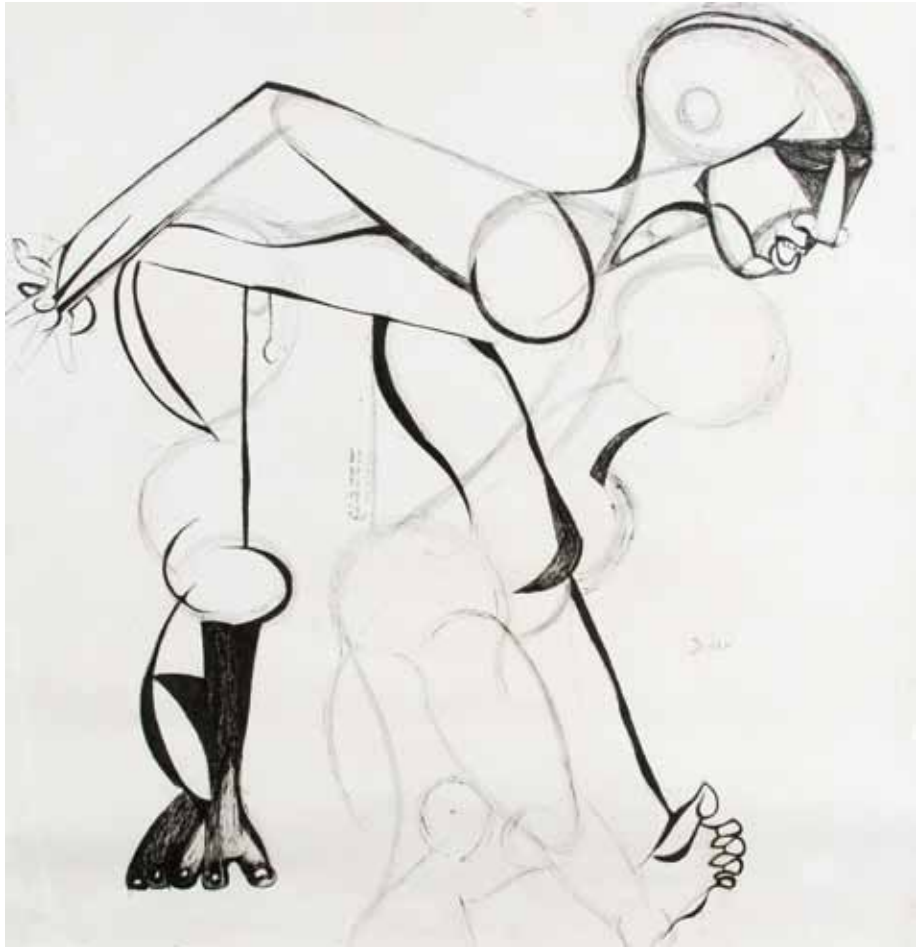
36 by 30,5 cm

R25 000 – 40 000



156

157



156

Zwelidumile Mxgazi **FENI-MHLABA**

SOUTH AFRICAN 1942–1991 SOUTH AFRICAN

1942–1991

Chained Figure (8219)

signed and numbered 8219

pen and ink and gouache

150 by 87,5 cm

R50 000 – 70 000

157

Zwelidumile Mxgazi **FENI-MHLABA**

SOUTH AFRICAN 1942–1991

***Am I my Brother's Keeper, blood cries from
the ground, the curse of the ground***

signed, inscribed with the title in the work

pen and ink

sheet size: 150 by 144 cm

R70 000 – 100 000

158

William Joseph **KENTRIDGE**

SOUTH AFRICAN 1955–

Catullus-Caucasus Mountains Celluloid-Cellulose

2007

signed and numbered "P.P" 1/4 in pencil in the margin

hand-printed lithograph and collage
62 by 73 cm

R50 000 – 80 000

158



159

Kendell **GEERS**

SOUTH AFRICAN 1968–

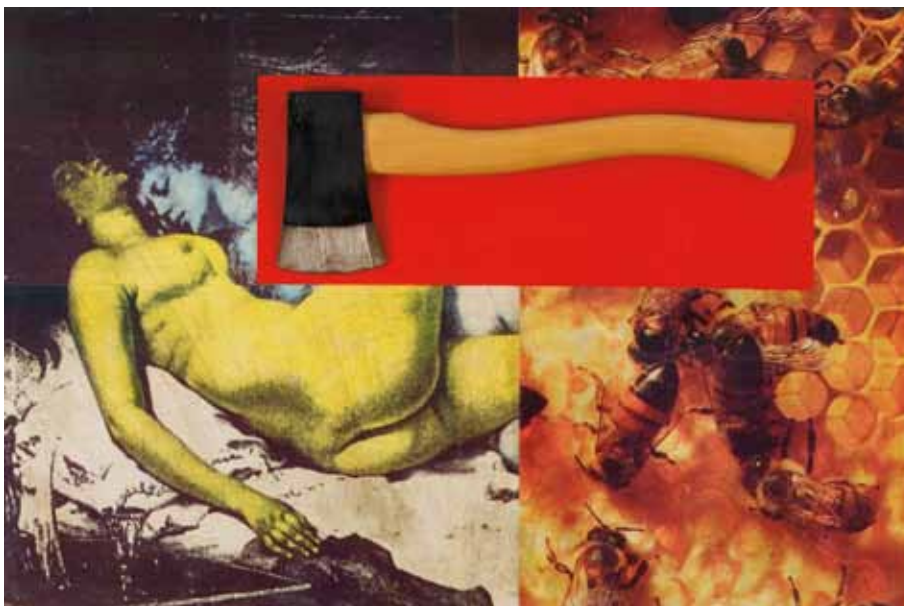
After Laziness and Sensuality

signed, dated June 1992 and inscribed with the title on the reverse

photographic collage with enamel paint and found object (axe)
53 by 80 cm

R40 000 – 60 000

159





160

Alexander ROSE-INNES

SOUTH AFRICAN 1915–1996

Early Morning Nude

signed

oil on canvas

39,5 by 54,5 cm

R100 000 – 150 000



161

161

Alexander **ROSE-INNES**

SOUTH AFRICAN 1915–1996

Blue Nude

signed
oil on board
41 by 27 cm

R60 000 – 90 000



162

162

Diane Veronique **VICTOR**

SOUTH AFRICAN 1964

Melancholia

signed, dated '07, numbered 8/10 and inscribed
with the title in pencil
embossed etching and aquatint in colour
99 by 69 cm

R15 000 – 20 000



163

163

Zwelidumile Mxgazi **FENI-MHLABA**

SOUTH AFRICAN 1942–1991

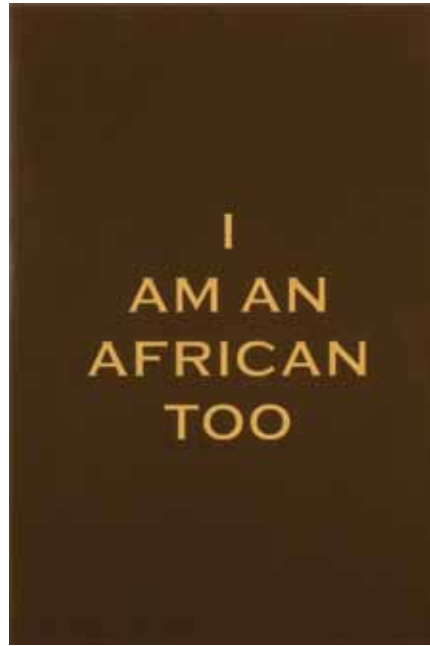
Anguish; Young Man; Flower Woman

signed and dated 56; signed, dated 1966 and inscribed with the title; signed, respectively ball-point pen

37 by 23cm; 31 by 24cm; 30 by 17,5 cm

(3)

R40 000 – 60 000



164

Bruce Murray **ARNOTT**

SOUTH AFRICAN 1938–2007

I am an African Too, diptych

signed, dated 2008, numbered 1/5 and inscribed with the title on a label on the reverse aluminium and paint each approximately: 42,7 by 29 cm

R10 000 – 15 000

PROVENANCE

The Goodman Gallery,
Johannesburg.

165

Guy **TILLIM**

SOUTH AFRICAN 1962–

Portrait XVI, Mai Mai Militia in Training

2002

archival pigment ink on 300g coated cotton paper
86,5 by 59 cm

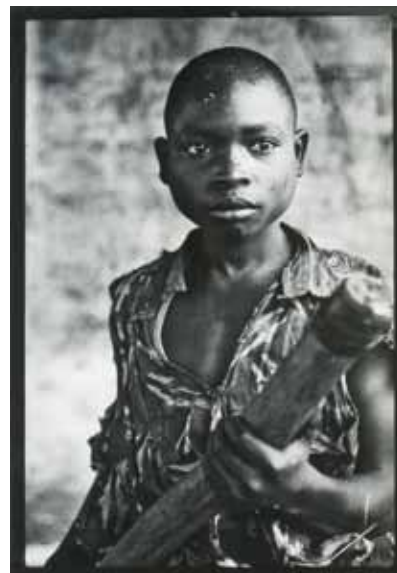
R18 000 – 24 000

PROVENANCE

Michael Stevenson Fine Art, Cape Town.
The Goodman Gallery, Johannesburg.



165



166

166

Guy **TILLIM**

SOUTH AFRICAN 1962–

Portrait VI, Mai Mai Militia in Training

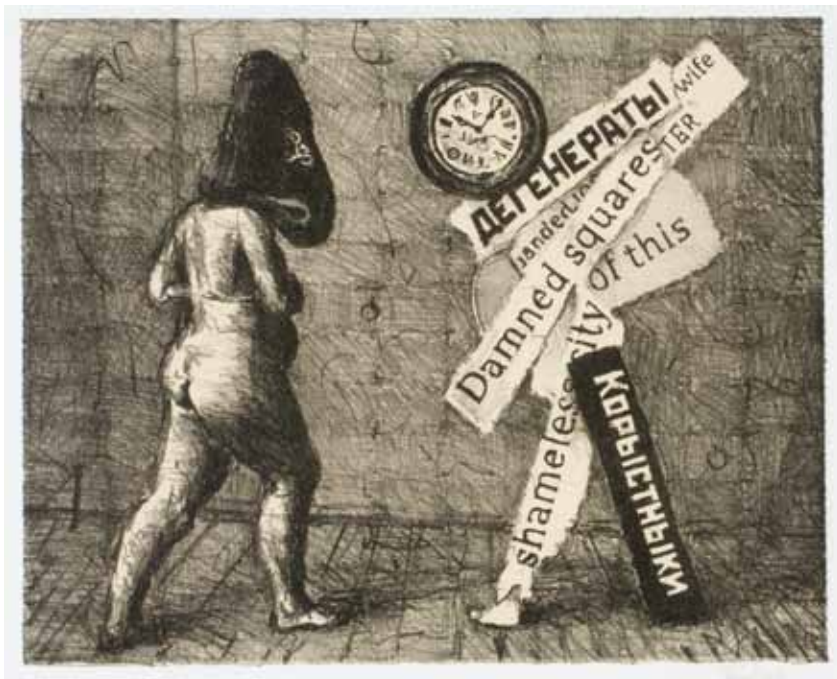
2002

archival pigment ink on 300g coated cotton paper
86,5 by 59 cm

R18 000 – 24 000

PROVENANCE

Michael Stevenson Fine Art, Cape Town.
The Goodman Gallery, Johannesburg.



167

167

William Joseph **KENTRIDGE**

SOUTH AFRICAN 1955–

Damned Squares of the Shameless City

Series: 2007–2009

signed and numbered 'P/P' 2/3 in pencil in the
margin
lithograph
31 by 38 cm

R25 000 – 40 000



168

168

William Joseph **KENTRIDGE**

SOUTH AFRICAN 1955–

A Still Life with Apples

2007

signed and numbered 28/40 in pencil in the margin

drypoint etching

39,5 by 39,5 cm

R50 000 – 80 000



169

169

William Joseph **KENTRIDGE**

SOUTH AFRICAN 1955–

Notary's Embossing Press

2004

signed and numbered 14/20 in pencil

lithograph

sheet size 52 by 42,5 cm

R18 000 – 24 000



170



171

170

William Joseph **KENTRIDGE**

SOUTH AFRICAN 1955–

Rhino (Head Down)

2007

signed, inscribed "P.P" and numbered 2/4 in pencil
in the margin
hand-printed lithograph and collage
28 by 42 cm

R25 000 – 40 000

171

William Joseph **KENTRIDGE**

SOUTH AFRICAN 1955–

Rhino (Head Up)

2007

signed and numbered 12/35 in pencil in the
margin
hand-printed lithograph and collage
45 by 50 cm

R30 000 – 50 000

172

Joachim Paulus **SCHÖNFELDT**

SOUTH AFRICAN 1958–

Keorapetse Mosimane

plastic with collaged photographic elements
44 by 69 by 52 cm

R10 000 – 15 000

173

Jekiseni Mbhazima Sagani

HLUNGWANI

SOUTH AFRICAN 1923–2010

Sea Creature

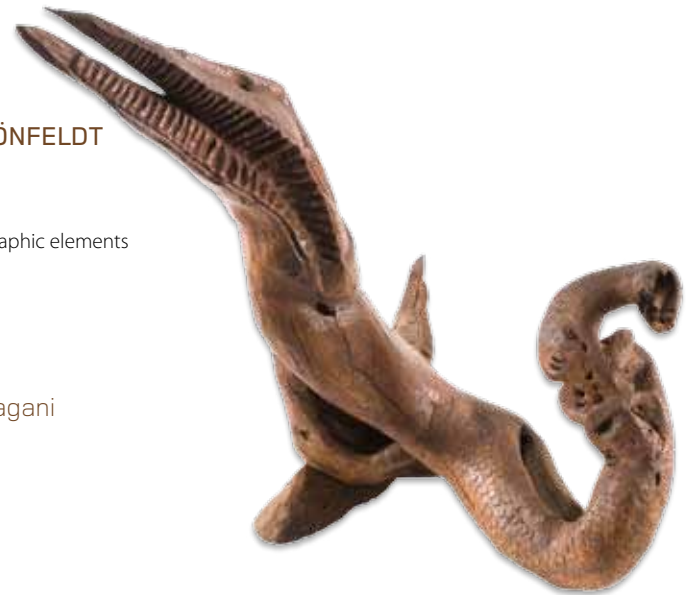
wood

82 by 95 by 86 cm

R20 000 – 30 000

PROVENANCE

The Everard Read Gallery, Johannesburg.



173



174

Willem Hendrik Adriaan **BOSHOFF**

SOUTH AFRICAN 1951–

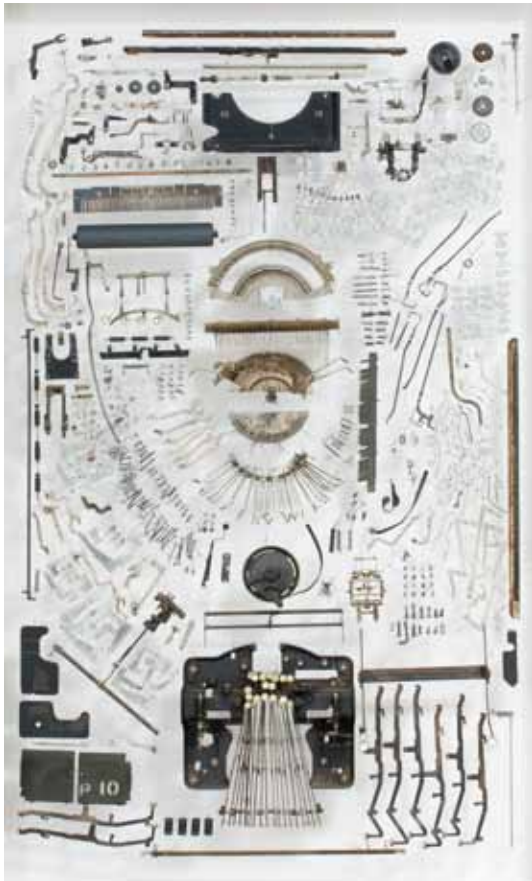
Sdrow Fo Nwodkaerb

each signed and dated 2004

old tools and utensils wrapped in dictionary facsimile paper leaves and mounted on dictionary facsimile pages

each approximately 87 by 60 by 5cm (4)

R80 000 – 120 000



175

Paula LOUW

SOUTH AFRICAN 1951–

Much Love

2008

inscribed with the artist's name and title on a label
on the reverse

typewriter components, wire, perspex and wood
164,5 by 98cm

R30 000 – 50 000

PROVENANCE

The Everard Read Gallery, Johannesburg.

EXHIBITED

The Johannesburg Art Fair, Johannesburg, 2010.



176

William Joseph KENTRIDGE

SOUTH AFRICAN 1955–

*L'inesorabile Avanzata: The World (1);
Newspaper Unread (2); Massacre of the
Innocents (3); Newspaper Read (4); Mal d
Afrika (5)*

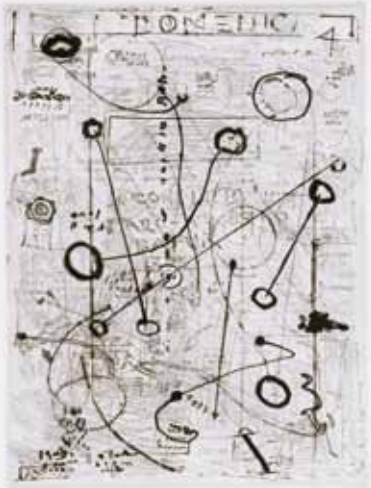
2007

each signed and numbered 50/50 in pencil in the
margin

sugarlift, aquatint, drypoint and engraving

sheet size 39,9 by 35,1cm (5)

R90 000 – 120 000





177

177

William Joseph **KENTRIDGE**

SOUTH AFRICAN 1955–

Magic Flute: Dove (State IX)

2007

signed, inscribed State IX and numbered 3/15 in pencil in the margin
drypoint etching

19,5 by 24,5cm

R25 000 – 40 000



178

178

William Joseph **KENTRIDGE**

SOUTH AFRICAN 1955–

Magic Flute: Dove (State X)

2007

signed, inscribed "State X" and numbered 3/15 in pencil in the margin
drypoint etching

19,5 by 24,5cm

R25 000 – 40 000

179

John Koenakeefe **MOHL**

SOUTH AFRICAN 1903–1985

8 Gum Trees, near Orlando

signed; signed and inscribed with the title on the reverse

oil on canvas laid-down on board
23 by 34cm

R25 000–40 000



180

180

Carl Walter **MEYER**

SOUTH AFRICAN 1965–

Trucking Stop

signed with the initials and dated 93
oil on canvas
59 by 74,5 cm

R40 000 – 60 000

PROVENANCE

The Everard Read Gallery, Johannesburg.

181

Carl Walter **MEYER**

SOUTH AFRICAN 1965–

A Block of Flats

signed and dated 94; inscribed with the title
on the reverse
oil on canvas
77 by 92 cm

R50 000 – 80 000



181

182

Kagiso Patrick MAUTLOA

SOUTH AFRICAN 1952–

An Industrial Landscape

signed and dated 05; inscribed with the title on a label on the reverse
oil and collage on canvas
130 by 129 cm

R40 000 – 60 000



182

183

Bettie CILLIERS-BARNARD

SOUTH AFRICAN 1914–2010

House of Souls

signed and dated 1998; inscribed with the title on the frame on the reverse
oil on canvas
120 by 120 cm

R70 000 – 100 000



183

184

Elsa MARSCHALL

SOUTH AFRICAN 1915–

Solaris

signed and dated 65; inscribed with the title on the stretcher on the reverse
mixed media on canvas
101,5 by 101,5 cm

R3 000 – 5 000

185

Frans Martin **CLAERHOUT**

SOUTH AFRICAN 1919–2006

*Figure with a Duck in a Sunny Flowered
Landscape*

signed
oil on board
89,5 by 74,5 cm

R70 000 – 100 000



185

186

Frans Martin **CLAERHOUT**

SOUTH AFRICAN 1919–2006

Two Figures with a Chicken

signed
oil on board
75 by 90 cm

R70 000 – 100 000



186

187

Robert Griffiths **HODGINS**

SOUTH AFRICAN 1920–2010

Keep Smiling Thru

signed, dated 2007 and inscribed with the title on
the reverse
hand-painted and glazed ceramic plate diameter:
29 cm

R6 000 – 9 000

188

Hylton NEL

SOUTH AFRICAN 1941–

A Young Girl in a Pink Dress

signed with the initials and dated "10.5.06" on the underside
hand-painted ceramic with incised decoration
height: 5cm, diameter: 26 cm

R6 000 – 9 000

189

Hylton NEL

SOUTH AFRICAN 1941–

A Reclining Nude

signed with the initials and dated "29.4.93" on the underside
hand-painted and glazed ceramic bowl
height: 5cm, diameter: 24,5 cm

R6 000 – 9 000

190

Hylton NEL

SOUTH AFRICAN 1941–

A Seated Nude Woman and a Fish

signed with the initials
hand-painted and glazed ceramic bowl
height: 12cm, diameter: 24,5 cm

R7 000 – 10 000

191

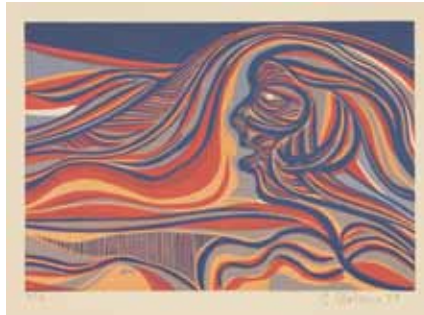
Hylton NEL

SOUTH AFRICAN 1941–

A Leafed Wreath with Poem

signed with the initials and dated "18.11.02" on the reverse
hand-painted and glazed ceramic bowl
inscribed with text
height: 9cm, diameter: 29,5 cm

R7 000 – 10 000



192

192

Cecil Edwin Frans SKOTNES

SOUTH AFRICAN 1926–2009

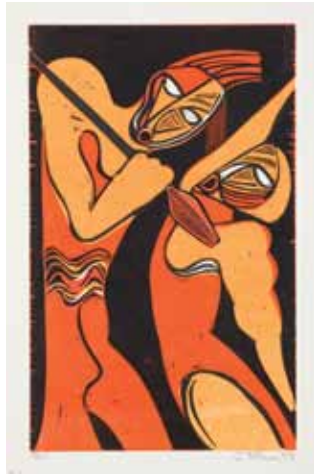
Man's Gold

1975

28 woodcuts each signed, dated and inscribed
71/75 in pencil in the margin
woodcuts in colour
sheet size: 38,5 by 53,5 cm

R25 000 – 40 000

28 woodcuts by Cecil Skotnes, 6 poems and text by Stephen Grey, based on ideas by Denis Godfrey. These woodcuts were printed from original blocks in 2 to 5 colours on Zerkall Buetten paper by Egon Guenther, each copy is hand bound in Oasis goat skin by Peter Carstens, Johannesburg, August 1975 – January 1979.



193

Cecil Edwin Frans **SKOTNES**

SOUTH AFRICAN 1926–2009

*The Assassination of Shaka (Portfolio with captions by Stephen Gray,
43 works housed in a linen box)*

1973

each signed, dated 73 and numbered 99/225 in pencil in the margin

woodcuts in colour

sheet size: 50 by 33,2 cm

R35 000 – 50 000

194–200

NO LOTS