

Edith Dodo

1923 – 2009

Edith Dodo, née Azgour, was born in Cairo where her father was a perfumier. They relocated to Paris where Edith went to school and was introduced to a world of art, design and fashion that was to leave a lasting impression on her. When Edith was fifteen the family immigrated to South Africa and settled in Johannesburg where she completed her schooling before going on to the Johannesburg Art School. Edith met Maud Sumner and soon began enjoying painting lessons with her. The many superb Sumners in the collection confirm their enduring friendship as does her portrait of Edith as Joan of Arc.

After meeting and marrying Monte Dodo the couple relocated to Pietermaritzburg where the Dodo family operated a business that was to develop into the nation-wide Dodo Shoe Stores and Dodo Fashion Boutiques. They travelled throughout Europe, often spending extended periods in Paris, where Edith frequented museums and galleries and familiarised herself with the top artists of the day.

Edith Dodo became a member of the Tatham Art Gallery Advisory Committee and was commissioned to look for suitable work for the collection. On a trip to London in 1965 she acquired a Manessier watercolour and an Ivon Hitchens oil. These acquisitions were viewed by the committee as very important additions which added to the Modernist thrust they were developing in the Tatham collection at that time.¹

Her own international collection confirms her innovative and courageous choices based on sound judgment and an eye for design, style and colour. Highlights include *Figure on Purple* painted by British artist, Ivon Hitchens in 1965, an abstract painting by French Tachiste Alfred Manessier and Picasso's etching *Rêve de Marin* from his famous 347 Suite published in 1969. Polish-born, School of Paris artist Henri Hayden's *Les Champs* painted in 1962 displays the lyrical composition and bejewelled colours that have assured him a place in major collections such as the Tate Gallery. Also included are prints by leading international artists Georges Braque, Joan Miró, Fernand Léger, Alberto Giacometti and Marc Chagall and the European Lyrical Abstractionists, as well as a *Portrait of Monsieur Duchamp* by Jacques Villon, brother of Marcel Duchamp.

Edith Dodo involved herself actively in the local art scene with regular attendances at exhibition openings and events. She engaged with artists such as Walter Battiss and added their works to her substantial and growing collection. The numerous delightful Sumners are complemented by Alexis Preller's *Blue Nude* and many attractive still life and landscape paintings by Terence McCaw and Gordon Vorster amongst others.

1. Brendan Bell, Director, Tatham Art Gallery, Pietermaritzburg, personal communication, 2 February 2010



Edith Dodo discussing Ivon Hitchens' *Twisting Stream* with Tatham Art Gallery curator, Lorna Nimmo.



Edith Dodo with Walter Battiss at an exhibition opening in Pietermaritzburg.

South African and International Paintings, Sculpture and Prints from the Edith Dodo Collection



60



62



63

60

Maud Frances Eyston Sumner

SOUTH AFRICAN 1902-1985

Flowers in a Glass Jug

signed
watercolour
40 by 30cm

R14 000 – 18 000

61

Maud Frances Eyston Sumner

SOUTH AFRICAN 1902-1985

Flowers in a Vase on a Mantlepiece

signed
watercolour
20 by 27cm

R5 000 – 7 000

62

Gordon Frank Vorster

SOUTH AFRICAN 1924-1988

Trees in an Abstract Landscape

signed
on board
70 by 85cm

R18 000 – 24 000

63

Christo Coetzee

SOUTH AFRICAN 1929-2001

Having a Drink

signed and dated 51
oil on board
30 by 15cm

R8 000 – 12 000

64

Walter Whall Battiss

SOUTH AFRICAN 1906-1982

Orgy 2

signed, inscribed with the title and numbered 21/25 in pencil in the margin
colour silkscreen
44 by 63cm

R12 000 – 16 000



64

65

Basil Louis Jones

SOUTH AFRICAN 1917-

Seated Figure

signed with the artist's initials
carved yellowwood, on a wooden base
height: 39cm

R1 500 – 2 500



65

66

Michael Gagashe Zondi

SOUTH AFRICAN 1926-

Figure of a Man

signed with the artist's initials and dated 71
carved wood, on a wooden base
height: 68cm

R10 000 – 15 000



66

67

South African School

20TH CENTURY

Female Torso

marble, on a wooden base
height: 48cm

R2 000 – 3 000



67

68

Mary Cassatt

AMERICAN 1844-1926

Mother and Child

signed in pencil in the margin
etching and aquatint
image: 26,5 by 22,5cm

R10 000 – 12 000

69

Bernard Dunstan

BRITISH 1920-

In the Nursery

signed with the artist's initials
oil on board
24 by 29cm

R18 000 – 24 000

70

Henry Moore

BRITISH 1898-1986

Mother and Child

signed and numbered 47/50 in pencil in the margin
etching
image: 22 by 27cm

R20 000 – 30 000

PROVENANCE

Neil Sack Gallery, Durban

71

After Henri de Toulouse-Lautrec

FRENCH 1864-1901

Yvette Guilbert (A Menilmontant de Bruant)

Plate IV from the English series, published by Bliss & Sands, London, 1898, LD255

lithograph
image: 29 by 24cm

R2 000 – 3 000

Yvette Guilbert performed at the Moulin Rouge and was a favourite subject of Lautrec. He made many portraits and caricatures of her and dedicated his second album of sketches to her.



68



69



70



72

72

After Georges Rouault

FRENCH 1871-1958

Visages, ten portraits

including: Blaise, Le Docteur, Eusèbe, Camille, Mirriflor, Le Cafardeux, Martial, Anais and Benigne, portfolio published by Daniel Jacomet, Paris, 1969, each numbered 283/450 in pencil in the margin
 colour lithographs
 each 27,5 by 17cm (10)

R15 000 – 20 000

73

Jacques Villon

FRENCH 1875-1963

Monsieur Duchamp

signed and numbered 93/125 in pencil

in the margin

colour lithograph

image: 60 by 48cm

R12 000 – 15 000

74

After Fernand Léger

FRENCH 1881-1955

Le Roi du Coeur

numbered 125/300 in pencil in the margin

colour lithograph

72 by 51cm

R2 000 – 3 000

75

Fernand Léger

FRENCH 1881-1955

Composition sur Fond Bleu

signed with the artist's initials and dated 48,

numbered 246/300 in pencil in the margin

colour lithograph

image: 25,5 by 33cm

R4 000 – 6 000



73



74



75

76

Georges Braque

FRENCH 1882-1963

L'Echo

signed and numbered 283/300 in pencil
in the margin
colour lithograph
image: 50 by 62cm

R25 000 – 40 000

77

Georges Braque

FRENCH 1882-1963

Vase de Fleurs Jaunes

signed and numbered 266/300 in pencil
in the margin
colour lithograph
image: 48 by 34cm

R10 000 – 15 000

78

Marie Laurencin

FRENCH 1883-1956

Trois Femmes en Buste

signed and numbered 152/200 in pencil
in the margin
colour lithograph
image: 32 by 53cm

R10 000 – 15 000

79

Henri Hayden

FRENCH 1883-1970

Landscape

signed, dated 1968 and numbered 62/75
in pencil in the margin
colour lithograph
image: 35 by 49cm

R2 000 – 3 000



76



77



78

80

Sonia Delaunay

FRENCH 1885-1979

Abstract Composition

signed in pencil in the margin

colour lithograph

image: 16,5 by 13,5cm

R6 500 – 8 500



80

81

Roger Bissière

FRENCH 1886-1964

Composition Rose

signed and numbered 2/75 in pencil

in the margin

colour lithograph

image: 53 by 34cm

R3 000 – 5 000



82

82

Marc Chagall

RUSSIAN/FRENCH 1887-1985

Nature Morte au Bouquet

signed and numbered 16/75 in pencil

in the margin

colour lithograph

image: 64 by 50cm

R35 000 – 45 000



83

83

Joan Miró

SPANISH 1893-1983

Le Combat Rituel

signed and numbered 39/75 in pencil

colour lithograph

60 by 88cm

R30 000 – 40 000

84

Boris Smirnof

RUSSIAN 1894-1976

Portrait of Edith Dodo

signed
pencil crayon and pencil on paper
38 by 31cm

R1 000 – 2 000

85

Serge Poliakoff

RUSSIAN 1900-1969

Composition Rouge, Jaune et Bleu

signed and numbered 91/100 in pencil
in the margin
colour lithograph
image: 24,5 by 18,5cm

R20 000 – 30 000

PROVENANCE

Goodman Gallery, Johannesburg

86

Alberto Giacometti

SWISS/ITALIAN 1901-1966

Bouquet et Bol de Fruits

signed in pencil
lithograph
sheet size: 31 by 25cm

R10 000 – 15 000

87

Hans Hartung

GERMAN 1904-1989

Komposition

signed and numbered 48/75 in pencil
colour lithograph
76 by 106cm

R3 000 – 5 000



85



86



87

88

Hans Hartung

GERMAN 1904-1989

Komposition in Grünschwarz

signed, inscribed E. A. in pencil and stamped
Erker-Presses St Gallen
lithograph
51 by 68cm

R2 000 – 4 000

89

Jean-René Bazaine

FRENCH 1904-1995

Abstract

signed, dated 60 and numbered 58/100 in pencil
colour lithograph
30 by 43cm

R1 000 – 2 000

90

Edouard Pignon

FRENCH 1905-1993

Composition

signed and inscribed E. A. in pencil
colour lithograph
45 by 63cm

R2 000 – 3 000

91

Alfred Manessier

FRENCH 1911-1993

Abstract

signed and numbered 91/125 in pencil
colour lithograph
56 by 54cm

R4 000 – 6 000

92

Alfred Manessier

FRENCH 1911-1993

Abstract in Black, Pink and Turquoise

signed and dated 68
oil on board
21,5 by 21cm

R50 000 – 60 000

93

Alfred Manessier

FRENCH 1911-1993

Composition Bleu

signed, inscribed with X and numbered 41/99
in pencil
colour lithograph
55 by 75cm

R1 500 – 2 000

94

Alfred Manessier

FRENCH 1911-1993

Suite de Pâques, Le Message de l'Ange

signed, inscribed with XIV and numbered 94/99
in pencil
colour lithograph
56 by 76cm

R1 500 – 2 000

95

Alfred Manessier

FRENCH 1911-1993

Composition

signed, numbered 19/30 and inscribed 'épreuve
d'artiste' in pencil in the margin
lithograph
76 by 114cm

R5 000 – 6 000

96

Robert Boinay

SWISS 1918-

Sur la Plage

signed
oil on canvas
48 by 60cm

R5 000 – 7 000

97

After Pierre Soulages

FRENCH 1919-

Composition

serigraph, after an ink, from a limited edition
of 600
24 by 17cm

R1 800 – 2 400

98

Pierre Soulages

FRENCH 1919-

Composition Noir et Bleu

signed and numbered 32/95 in pencil
colour lithograph
75 by 56cm

R8 000 – 10 000

99

Pierre Soulages

FRENCH 1919-

Composition XXXV

signed and numbered 15/95 in pencil in the
margin lithograph, inscribed L.35, 1975, on the
reverse
image: 48 by 75cm

R8 000 – 10 000

90



91



92



95



96





100



101



102

100

Pierre Soulages

FRENCH 1919-

Eau-forte XXXV

signed and numbered 10/100 in pencil
etching
sheet size: 78 by 72cm

R8 000 – 10 000

101

Zao Wou-Ki

CHINESE 1921-

Abstract

signed and numbered 72/99 in pencil in the margin
colour lithograph
50 by 43cm

R8 000 – 10 000

102

Zao Wou-Ki

CHINESE 1921-

Landscape

signed and inscribed H. C in pencil in the margin
colour lithograph
image: 62 by 43cm

R8 000 – 10 000

103

Continental School

20TH CENTURY

City Street

signed indistinctly
pencil, pen and ink and gouache
45 by 60cm

R2 000 – 3 000

104

French School

20TH CENTURY

Abstract in Blue

signed indistinctly and dated 68
watercolour
76 by 56cm

R3 000 – 4 000

105

Continental School

20TH CENTURY

Portrait of a Woman in a Hat

signed indistinctly and inscribed E/A in pencil
in the margin
colour lithograph
sheet size: 76 by 54cm

R1 800 – 2 400

South African Paintings, Sculpture and Prints

Various Properties

106

Frederick Timpson l'Ons

SOUTH AFRICAN 1802-1887

Young Girl Collecting Water

gouache

35 by 26cm, oval

R15 000 – 20 000

PROVENANCE

The Dr Ryno Greenwall Collection

107

Frederick Timpson l'Ons

SOUTH AFRICAN 1802-1887

Young Boy in a Red Jacket

signed

gouache

32,5 by 24cm

R15 000 – 20 000

PROVENANCE

The Dr Ryno Greenwall Collection

108

Frederick Timpson l'Ons

SOUTH AFRICAN 1802-1887

Young Boy

signed

gouache

33 by 24cm

R15 000 – 20 000

PROVENANCE

The Dr Ryno Greenwall Collection



106



107



109

109

Frederick Timpson l'Ons

SOUTH AFRICAN 1802-1887

The Kaffir Chiefs Sandilli, Anta and Macomo Waiting for War News by Special Messenger

inscribed on the reverse with the title

oil on canvas

23 by 37,5cm

R40 000 – 60 000

PROVENANCE

The Dr Ryno Greenwall Collection



110



111



112



113



114



115

110

Thomas William Bowler

SOUTH AFRICAN 1812-1869

Sailing in Table Bay

signed and dated 1866
watercolour
26 by 45cm

R70 000 – 100 000

111

Thomas William Bowler

SOUTH AFRICAN 1812-1869

On the Beach near the Military Hospital

watercolour
18 by 33,5cm

R12 000 – 16 000

PROVENANCE

The Dr Ryno Greenwall Collection

LITERATURE

Frank Bradlow, *Thomas Bowler, His Life and Work*, Balkema, Cape Town, 1967, p67, no 114, a similar example is illustrated facing p25, no 4

Accompanied by a letter of authenticity signed by Dr Frank Bradlow, 23 May 1994

112

Thomas William Bowler

SOUTH AFRICAN 1812-1869

Choppy Seas, Table Bay

watercolour
23,5 by 32cm

R40 000 – 60 000

113

Thomas William Bowler

SOUTH AFRICAN 1812-1869

Table Mountain from Bloubergstrand

watercolour
15 by 23cm

R25 000 – 40 000

114

Thomas William Bowler

SOUTH AFRICAN 1812-1869

Salt River, Blou Berg in the Distance

signed with the artist's initials, dated 1861 and inscribed with the title
watercolour heightened with white
23 by 33cm

R40 000 – 60 000

115

Thomas William Bowler

SOUTH AFRICAN 1812-1869

Kalk Bay looking towards Simons Bay

watercolour
24 by 34cm

R12 000 – 16 000

PROVENANCE

The Dr Ryno Greenwall Collection

EXHIBITED

South African National Gallery, Cape Town, *False Bay Coastal Scenes*, 30 November 1996 - 12 January 1997

LITERATURE

Frank Bradlow, *Thomas Bowler, His Life and Work*, Balkema, Cape Town, 1967, p183, no 368

Accompanied by a letter of authenticity from Dr Frank Bradlow, 23 May 1994

116

Thomas William Bowler

SOUTH AFRICAN 1812-1869

Wynberg

inscribed with the title in pencil
watercolour
10,5 by 12cm

R10 000 – 15 000

PROVENANCE

The Dr Ryno Greenwall Collection

117

Thomas William Bowler

SOUTH AFRICAN 1812-1869

Panorama of Cape Town and Surrounding Scenery

signed
coloured lithograph, lithographic printers Day & Son, London, published by Ackermann & Co, 1854
23 by 117cm

R8 000 – 12 000

PROVENANCE

The Dr Ryno Greenwall Collection

LITERATURE

Frank Bradlow, *Thomas Bowler, His Life and Work*, Balkema, Cape Town, 1967, p272, LP22



117

118

Thomas William Bowler

SOUTH AFRICAN 1812-1869

Table Mountain from Blaauwberg

watercolour

12 by 19,5cm

R4 000 – 6 000

PROVENANCE

The Dr Ryno Greenwall Collection

Accompanied by a letter of authenticity from
Dr Frank Bradlow, 3 March 1976



118

119

Abraham De Smidt

SOUTH AFRICAN 1829-1908

Kalk Bay

oil on board

26 by 46,5cm

R18 000 – 24 000

PROVENANCE

The Dr Ryno Greenwall Collection

EXHIBITED

South African National Gallery, Cape Town, *False Bay Coastal Scenes*, 30 November 1996 - 12 January 1997



119

120

Abraham De Smidt

SOUTH AFRICAN 1829-1908

*View From The Bridle Path up Table Mountain
Looking Towards Muizenberg and Zandvlei*

signed with the artist's initials, inscribed on the
reverse with the title

oil on board

26 by 48cm

R18 000 – 24 000

PROVENANCE

The Dr Ryno Greenwall Collection

LITERATURE

Marjorie Bull, *Abraham de Smidt, 1829-1908, Artist and
Surveyor General of the Cape Colony*, illustrated p123.



120

121

Donald McLean Fraser

BRITISH 1829-

Table Mountain from Robben Island

watercolour
10,5 by 16cm

R5 000 – 7 000

PROVENANCE

The Dr Ryno Greenwall Collection

122

Donald McLean Fraser

BRITISH 1829-

Mouille Point Lighthouse

watercolour
14 by 22cm

R5 000 – 7 000

PROVENANCE

The Dr Ryno Greenwall Collection

123

Donald McLean Fraser

BRITISH 1829-

Martello Tower, Simon's Town

watercolour
21,5 by 31cm

R5 000 – 7 000

PROVENANCE

The Dr Ryno Greenwall Collection

121



122



123





124

124

George Harcourt

BRITISH 1869-1947

Farewell

signed and dated '99
oil on canvas
70 by 48cm

R50 000 – 70 000



125

125

Attributed to Amy Beatrice Hazell

BRITISH 1864-1946

Still Life with Erica Colorans

oil on board
46,5 by 30cm

R4 000 – 6 000

Erica Colorans grows in vleis in the areas of Caledon and Bredasdorp and is endemic to this specific part of the world.



126

126

Frans David Oerder

SOUTH AFRICAN 1867-1944

Portrait of a Man with Feathered Headdress

signed and dated '98
oil on paper laid down on card
22 by 14,5cm

R20 000 – 30 000

PROVENANCE

Pieter Wenning Gallery, Johannesburg

127

Frans David Oerder

SOUTH AFRICAN 1867-1944

Blossom Sprig

signed
watercolour
15 by 28cm

R8 000 – 12 000

128

Walter Gilbert Wiles

SOUTH AFRICAN 1875-1966

Landscape with Eagle

inscribed with the artist's name and title
on the reverse
pastel
50 by 67cm

R15 000 – 20 000

129

Ernst Karl Erich Mayer

SOUTH AFRICAN 1876-1960

Ficksburg, OFS

signed and dated 1929, inscribed on a
label attached to the reverse with the title
and information on PWD Dodds, d. 1914,
teacher and Deputy Mayor of Ficksburg
who was responsible for planting the trees
on the mountain slopes.
oil on board
20 by 36cm

R18 000 – 24 000

130

Jan Ernst Abraham Volschenk

SOUTH AFRICAN 1879-1935

Heather, three studies

two signed, one inscribed 'From Caledon
CC' and one 'Garcias Pass'
watercolour
each approximately 27 by 21cm (3)

R8 000 – 12 000



128



129



130

Part lot



130

131

Jan Ernst Abraham Volschenk

SOUTH AFRICAN 1879-1935

Sleeping Beauty

signed

oil on canvas laid down on board

16,5 by 19cm

R12 000 – 16 000

132

Jan Ernst Abraham Volschenk

SOUTH AFRICAN 1879-1935

*A Double Range in the Langebergen
(Riversdale)*

signed and dated 1912, signed, dated and
inscribed with the title on the reverse

oil on canvas

19 by 34cm

R30 000 – 50 000

133

Jan Ernst Abraham Volschenk

SOUTH AFRICAN 1879-1935

*Glimpse of Camps Bay from
Kloof Nek*

signed and dated 1910, signed, dated and
inscribed with the title on the reverse

oil on canvas

26 by 35cm

R30 000 – 40 000

131



132



133



134

George William Pilkington

SOUTH AFRICAN 1879-1958

The Jetty, Kalk Bay

signed
oil on board
20 by 29cm

R8 000 – 10 000



134

135

Pranas Domsaitis

SOUTH AFRICAN 1880-1965

Two Women Fetching Water

signed with the artist's monogram
oil on board
49,5 by 34,5cm

R25 000 – 35 000



135

136

Pranas Domsaitis

SOUTH AFRICAN 1880-1965

Contemplative Woman

signed with the artist's monogram
oil on board
34 by 23cm

R15 000 – 20 000



136



137

137
Emily Isabel Fern
 SOUTH AFRICAN 1881-1953

Dahlias in a Vase
 signed and dated 1946
 oil on canvas
 63,5 by 58cm

R10 000 – 15 000



138

138
Tinus (Marthinus Johannes) de Jongh
 SOUTH AFRICAN 1885-1942

Landscape
 signed
 oil on canvas board
 23 by 32cm

R15 000 – 20 000



140

139
Jacob Hendrik Pierneef
 SOUTH AFRICAN 1886-1957

Okahandjberg, Suidwes-Afrika (1930)
 signed, inscribed with the title and numbered 32/100 in pencil in the margin
 etching
 image: 20 by 27cm

R7 000 – 10 000

140
Jacob Hendrik Pierneef
 SOUTH AFRICAN 1886-1957

Landscape with Trees
 charcoal and crayon, heightened with white
 25,5 by 37cm

R25 000 – 35 000

LITERATURE

University of Pretoria, *JH Pierneef, His Life and his Work*, Perskor, Cape Town, 1990, p15 illustrated

141

Maggie (Maria Magdalena) Laubser

SOUTH AFRICAN 1886-1973

Portrait of a Young Girl

signed and dated '40
charcoal
46 by 37cm

R12 000 – 16 000

PROVENANCE

From the Collection of Mr & Mrs Denis Godfrey



141

142

Maggie (Maria Magdalena) Laubser

SOUTH AFRICAN 1886-1973

Portrait of a Woman

signed and dated '20
charcoal
33,5 by 26cm

R15 000 – 20 000



142

143

Harry Stratford (Strat) Caldecott

SOUTH AFRICAN 1886-1929

Station Scene

signed and inscribed with the title on the mount
charcoal
22,5 by 28cm

R3 000 – 5 000

LITERATURE

J du P Scholtz, *Strat Caldecott, 1886-1929*. Balkema, Cape Town, 1970, p83, ref. 15. illus no. 45

144

Adolph Stephan Friedrich Jentsch

SOUTH AFRICAN 1888-1977

Landscape, SWA

signed with the artist's initials and dated 1946
watercolour
18 by 31cm

R12 000 – 16 000

145

Adolph Stephan Friedrich Jentsch

SOUTH AFRICAN 1888-1977

Namibian Landscape

signed with the artist's initials and dated 1965
watercolour
24 by 43cm

R25 000 – 30 000



146

146

William Mitcheson Timlin

SOUTH AFRICAN 1892-1943

The Letter

signed, inscribed with the title and with the artist's owl device mark
watercolour
35 by 34,5cm

R30 000–40 000

Property of a Private Collector

147

William Mitcheson Timlin

SOUTH AFRICAN 1892-1943

The Building of a Fairy City - The Iron Workers

signed, dated 1925 and inscribed with the title in the margin
watercolour over ink
34,5 by 56cm

R80 000 – 120 000

William Timlin started a series of fantasy paintings for a book entitled *The Building of a Fairy City*, he also wrote the text, but never completed the project.

PROVENANCE

Alpheus Fuller Williams, Vergenoeg, Muizenberg and thence by descent

148

William Mitcheson Timlin

SOUTH AFRICAN 1892-1943

The Galleon

signed and signed with the artist's owl device mark
watercolour
60,5 by 49cm

R80 000 – 120 000

PROVENANCE

A gift from the artist to Mr Arthur Lane of the firm, Lane & Dove, Quantity Surveyors, Kimberley.
Sold: Stephan Welz & Co, Cape Town, 27 May 1991, lot 326
Sold: Stephan Welz & Co, Cape Town, 9 February 1999, lot 221

149

William Mitcheson Timlin

SOUTH AFRICAN 1892-1943

The Arrival

signed
watercolour
26,5 by 24cm

R80 000 – 120 000

and two pages from the book *The Ship that Sailed to Mars*, Part Three Contents, and *The Arrival*, hand written by the artist in pen and ink (3)

PROVENANCE

Alpheus Fuller Williams, Vergenoeg, Muizenberg and thence by descent

150

William Mitcheson Timlin

SOUTH AFRICAN 1892-1943

The Pirates' Floating Island: Illustration to Lord Dunsany's 'Loot of Bombasharna'

signed, dated 1916 and inscribed with the title
watercolour
36 by 26cm

R35 000 – 50 000

PROVENANCE

Sold: Stephan Welz & Co, Cape Town, 8 & 9 February 1999, lot 220

151

William Mitcheson Timlin

SOUTH AFRICAN 1892-1943

Fantasy

watercolour
27 by 37,5cm

R25 000 – 35 000

152

William Mitcheson Timlin

SOUTH AFRICAN 1892-1943

The Leper Ship

signed, dated 1920, inscribed with the title and signed with the artist's owl device mark
mixed media on canvas
laid down on board
35 by 50cm

R30 000 – 40 000

153

William Mitcheson Timlin

SOUTH AFRICAN 1892-1943

The Little Faun

signed, inscribed with the title and with the artist's owl device mark
pen and ink and watercolour
25 by 34cm

R30 000 – 40 000



147



148



149



151



152



153

154

William Mitcheson Timlin

SOUTH AFRICAN 1892-1943

The Harbour Fairies

signed, inscribed with the title and signed with the artist's owl device mark
watercolour over red chalk
35 by 44,5cm

R40 000 – 60 000

155

William Mitcheson Timlin

SOUTH AFRICAN 1892-1943

The Green Nightmare

signed, dated 1921, inscribed with the title and with the artist's owl device mark
pen and ink and watercolour
45,5 by 28,5cm

R70 000 – 90 000

PROVENANCE

Sold: Stephan Welz & Co, Johannesburg,
6 November, 2000, lot 419

156

William Mitcheson Timlin

SOUTH AFRICAN 1892-1943

*Illustration to Tchaikowsky's Danse
Macabre*

signed, inscribed with the title and signed with the artist's owl device mark
pen and ink and watercolour
53 by 32cm

R70 000 – 90 000

157

William Mitcheson Timlin

SOUTH AFRICAN 1892-1943

The Fairy Ferry

signed and inscribed with the title
watercolour
35 by 52cm

R50 000 – 70 000

PROVENANCE

Sold: Stephan Welz & Co, Mostertsdrift,
Stellenbosch, 19 & 20 August 1996, lot 171

158

William Mitcheson Timlin

SOUTH AFRICAN 1892-1943

Extensive Landscape at Dusk

signed
oil on board
37,5 by 58cm

R15 000 – 20 000

PROVENANCE

Sold: Stephan Welz & Co, Johannesburg,
4 November 1996, lot 117

159

William Mitcheson Timlin

SOUTH AFRICAN 1892-1943

A Road in a Mountain Landscape

signed, dated 1933 and signed with the artist's owl device mark
watercolour
44 by 58cm

R15 000 – 20 000

160

William Mitcheson Timlin

SOUTH AFRICAN 1892-1943

Feast Day, Bali

signed and dated 1936, inscribed with the title in the margin
pastel and watercolour
49 by 34cm

R40 000 – 60 000

161

William Mitcheson Timlin

SOUTH AFRICAN 1892-1943

Spanish Fantasy

signed, and with the owl device mark
watercolour on silk semicircular
22,5 by 45cm

R20 000 – 30 000

Design for a fan

162

William Mitcheson Timlin

SOUTH AFRICAN 1892-1943

A Coastal Landscape

signed and dated 1936
watercolour
77 by 97cm

R40 000 – 60 000

PROVENANCE

Alpheus Gardner Williams, Johannesburg,
and thence by descent

163

William Mitcheson Timlin

SOUTH AFRICAN 1892-1943

Equestrian Portrait

signed, dated 1933 and inscribed with the title
watercolour over pencil
33 by 50cm

R25 000 – 35 000



154



155



156



157



161



162



163

164

William Mitcheson Timlin

SOUTH AFRICAN 1892-1943

The Museum, Zanzibar

signed and inscribed with the title
pencil and wash
31,5 by 40cm

R9 000 – 12 000

PROVENANCE

Sold: Stephan Welz & Co, Cape Town,
8 & 9 February, 1999, lot 234

165

William Mitcheson Timlin

SOUTH AFRICAN 1892-1943

Muizenberg Beach

signed with artist's initials
watercolour
12,5 by 19,5cm

R3 000 – 5 000

PROVENANCE

Alpheus Fuller Williams, Vergenoeg,
Muizenberg

166

William Mitcheson Timlin

SOUTH AFRICAN 1892-1943

False Bay Coastline from

Muizenberg

signed and dated 18
watercolour
24,5 by 37,5cm

R12 000 – 15 000

PROVENANCE

Alpheus Fuller Williams, Vergenoeg,
Muizenberg

167

William Mitcheson Timlin

SOUTH AFRICAN 1892-1943

A Mountain Pool

signed
pastel
50 by 35cm

R7 000 – 10 000

PROVENANCE

Sold: Stephan Welz & Co, Johannesburg,
6 May 1996, lot 39

168

William Mitcheson Timlin

SOUTH AFRICAN 1892-1943

Twilight Landscape with Trees

signed
pastel
17,5 by 26cm

R7 000 – 10 000

169

William Mitcheson Timlin

SOUTH AFRICAN 1892-1943

A Wooded Landscape

signed, signed with the artist's owl device
mark
pastel
49 by 64cm

R10 000 – 15 000

PROVENANCE

Sold: Stephan Welz & Co, Johannesburg,
18 May 1998, lot 30



164



165



171

170

William Mitcheson Timlin

SOUTH AFRICAN 1892-1943

The Castle Gateway, Cape Town

signed and inscribed with the title and no 24 in pencil in the margin, signed with the artist's owl device mark in the plate
hand coloured etching
30 by 19,5cm

R2 000 – 3 000

171

William Mitcheson Timlin

SOUTH AFRICAN 1892-1943

The Castle, Cape Town

signed, inscribed with the title and no 5 in pencil in the margin and with the artist's owl device mark in the plate
hand coloured etching
20 by 24cm

R2 000 – 3 000

172

William Mitcheson Timlin

SOUTH AFRICAN 1892-1943

Old Drostdy, Swellendam

signed and inscribed with the title in pencil in the margin and with the artist's owl device mark in the plate
etching
21 by 26cm

R2 000 – 3 000

173

William Mitcheson Timlin

SOUTH AFRICAN 1892-1943

The Old Fort, Grahamstown

signed and inscribed with the title and no 4 in pencil in the margin, signed with the owl device mark in the plate
etching
20 by 14,5cm

R1 500 – 2 000

174

William Mitcheson Timlin

SOUTH AFRICAN 1892-1943

A Bechuanaland Mission Bell

signed in pencil in the margin, signed with the artist's owl device mark
etching
22,5 by 14,5cm

R1 500 – 2 000

PROVENANCE

Sold: Stephan Welz & Co, Johannesburg,
6 November 2000, lot 94



175

175

William Mitcheson Timlin

SOUTH AFRICAN 1892-1943

Etchings 1912

A large cloth-bound album containing 18 etchings of landscapes and other subjects, 1912-1934, an incomplete title page design, a full-page dedication "To Bill, Christmas, 1934, from Dad", hand-written index page numbered 1-50, consisting of 33 titles, all etchings signed, numbered, inscribed with the title and dated, all with full margins, various sizes, *some pages missing or cut, some with slight foxing*. Titles include: Cottage Groot [sic] Schuur; Waiting; Valley of Desolation; Bechuanaland Mission Bell; At Hermanus; At Humewood; Fisherman, Knysna; The Lighthouse, Mossel Bay; Hout Bay; Table Mountain from Robben Island; At Jonkershoek; At Stellenbosch; The Old Fort, Grahamstown; Prince Alfred's Pass; In the Durban Docks; Grotesque; Black Walls, Old Fort Mombasa; and The Owl
size of album: 54,5 by 41cm

R70 000 – 90 000

PROVENANCE

Sold: Stephan Welz & Co, Cape Town,
Works from The Studio of William Timlin,
7 December 1994, lot 56

Various properties

176

Enslin Hercules du Plessis

SOUTH AFRICAN 1894-1978

A Woman in a Field

signed
oil on canvas board
37 by 48cm

R12 000 – 16 000

177

Irma Stern

SOUTH AFRICAN 1894-1966

Mother and Child

signed and dated 1945
ink and wash
26 by 37cm

R25 000 – 35 000

LITERATURE

Irma Stern, *Zanzibar*. L. Schaik, Pretoria, 1948, p10, illustrated.

178

Irma Stern

SOUTH AFRICAN 1894-1966

Arab Reading the Koran

signed and dated 1945
red conté on paper
23,5 by 30cm

R25 000 – 35 000

LITERATURE

Irma Stern, *Zanzibar*. L. Schaik, Pretoria, 1948, p38, illustrated.

179

Irma Stern

SOUTH AFRICAN 1894-1966

Arab at Prayer

signed and dated 1945
charcoal
30,5 by 24,5cm

R25 000 – 35 000

LITERATURE

Irma Stern, *Zanzibar*. L. Schaik, Pretoria, 1948, p45, illustrated.
Irma Stern, Expressions of a Journey, Standard Bank, Johannesburg, September to November 2003, p93

180

Irma Stern

SOUTH AFRICAN 1894-1966

Portrait of Aga Khan

signed and dated 1945
charcoal
39 by 29cm

R25 000 – 35 000

LITERATURE

Irma Stern, *Zanzibar*. L. Schaik, Pretoria, 1948, p69, illustrated.

181

Irma Stern

SOUTH AFRICAN 1894-1966

Arab Writing

signed and dated 1945
charcoal
30,5 by 24,5cm

R25 000 – 35 000

LITERATURE

Irma Stern, *Zanzibar*. L. Schaik, Pretoria, 1948, p26, illustrated.
Irma Stern, Expressions of a Journey, Standard Bank, Johannesburg, September to November 2003, p129



177



178

182

Irma Stern

SOUTH AFRICAN 1894-1966

Seated Nude

signed and dated 1948
crayon
49 by 39cm

R18 000 – 24 000

PROVENANCE

The Dr Ryno Greenwall Collection



179



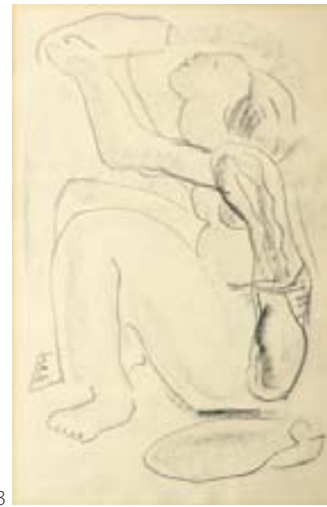
180



181



182



183

183

Irma Stern

SOUTH AFRICAN 1894-1966

Seated Woman Drinking

charcoal
47 by 30cm

R18 000 – 24 000

184

Alfred Neville Lewis

SOUTH AFRICAN 1895-1972

Portrait of a Woman

oil on canvas
38 by 30,5cm

R15 000 – 20 000

185

Nils Severin Andersen

SOUTH AFRICAN 1897-1972

Bridge Construction

signed
oil on board
37,5 by 50cm

R8 000 – 12 000

186

Nils Severin Andersen

SOUTH AFRICAN 1897-1972

Cape Farmhouse with Wagon

signed
oil on board
58,5 by 87,5cm

R15 000 – 20 000

PROVENANCE

The Dr Ryno Greenwall Collection

187

Alfred Friedrich Franz Krenz

SOUTH AFRICAN 1899-1980

Hermanus

signed and dated 1961
pastel
41 by 60cm

R20 000 – 30 000

188

Jean Max Friedrich Welz

SOUTH AFRICAN 1900-1975

Vrede Graaf-Reinet

signed, dated 69 and inscribed
with the title
charcoal
35 by 56cm

R8 000 – 12 000

189

Ernest Ullmann

SOUTH AFRICAN 1900-1975

Three Graces

signed with the artist's initials and
dated '67
oil on canvas
45 by 40cm

R7 000 – 10 000

PROVENANCE

From the Collection of Mr & Mrs
Denis Godfrey

190

Willem Hermanus Coetzer

SOUTH AFRICAN 1900-1983

*Mont-Aux-Sources,
Drakensberg*

signed and dated 44
oil on canvas board
30 by 60cm

R20 000 – 30 000

191

Walter Whall Battiss

SOUTH AFRICAN 1906-1982

Harvesting

signed, dated 1941, and inscribed
'To Miss Langley, 1941'
crayon
14,5 by 21,5cm

R12 000 – 16 000

192

Otto Klar

SOUTH AFRICAN 1908-1994

Landscape

signed and dated 1947
oil on board
45 by 60cm

R30 000 – 40 000

193

Robert Broadley

SOUTH AFRICAN 1908-1988

Reclining Nude

signed
oil on canvas
44 by 59,5cm

R8 000 – 12 000

PROVENANCE

From the Collection of Mr & Mrs
Denis Godfrey



192



193

194

Robert Broadley

SOUTH AFRICAN 1908-1988

Harbour, Gordons Bay

signed and dated 46, signed, dated, inscribed with the title, Cape Province, S.A., and the artist's studio address on the reverse
oil on board
34 by 44,5cm

R8 000 – 10 000

195

Nerine Constantia Desmond

SOUTH AFRICAN 1908-1993

Roses at Night

signed, signed and inscribed with the title on the reverse
oil on board
39 by 29cm

R7 000 – 10 000

196

Gregoire Johannes Boonzaier

SOUTH AFRICAN 1909-2005

Pondokkies, Winter, Crossroads, Cape

signed and dated 1982, signed and inscribed with the title on the reverse
watercolour
21 by 49,5cm

R14 000 – 18 000

197

Gerard Bhengu

SOUTH AFRICAN 1910-1990

Zulu Chief

signed
watercolour
36 by 26cm

R5 000 – 7 000

198

Alexis Preller

SOUTH AFRICAN 1911-1975

Interior

ceramic tile
14,5cm square

R25 000 – 40 000

199

Alexis Preller

SOUTH AFRICAN 1911-1975

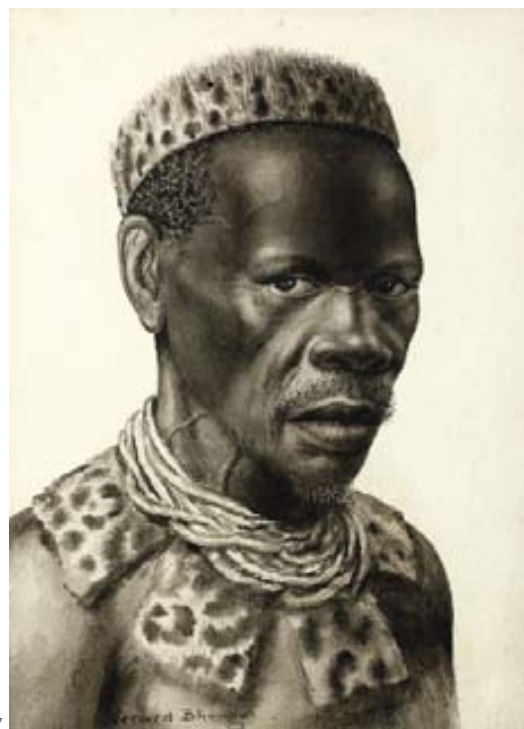
Primavera Profile

signed and dated '67
pencil on paper
25 by 22cm

R10 000 – 15 000

EXHIBITED

South African National Gallery,
Cape Town, *Master Works on Paper*



197



199

200

Terence John McCaw

SOUTH AFRICAN 1913-1978

Sheik Joseph's Tomb, Faure

signed, inscribed on the reverse
with the title and "For Harry in
appreciation, from Terence"
oil on board
31,5 by 40cm

R15 000 – 20 000

201

Terence John McCaw

SOUTH AFRICAN 1913-1978

Groot Constantia

signed
watercolour
30,5 by 37cm

R8 000 – 12 000

LITERATURE

Hans Fransen, *The Old Houses of the
Cape*, Balkema, Cape Town, 1965,
pp33-34.

Hans Fransen, *The Old Buildings
of the Cape*, Jonathan Ball,
Johannesburg and Cape Town,
2004, p141

202

Terence John McCaw

SOUTH AFRICAN 1913-1978

Amphitheatre, Drakensberg

signed
oil on canvas board
54,5 by 70cm

R25 000 – 35 000

203

Alexander Rose-Innes

SOUTH AFRICAN 1915-1996

District Six

signed
pastel
38 by 54,5cm

R20 000 – 30 000

204

Alexander Rose-Innes

SOUTH AFRICAN 1915-1996

My Soul

later signed
oil on board
50 by 63cm

R30 000 – 40 000

A gift from the artist to the current
owner's grandparents, who offered
him studio space in their garage in
Port Elizabeth when he was living
there as a young man. He signed
the work twenty years later.



200



203



204

209



210



205

Edoardo Villa

SOUTH AFRICAN 1915-

Figure with Tilted Head

signed, dated 1992 and
numbered 3/9
bronze
height: 55cm

R25 000 – 35 000

207

Leng Dixon

SOUTH AFRICAN 1916-1968

Upper Stellenberg, Cape

signed
watercolour heightened with white
39 by 54,5cm

R16 000 – 20 000

209

Albert Newall

SOUTH AFRICAN 1920-1989

Abstract

signed and dated 58
oil on board
24 by 49,5cm

R15 000 – 20 000

206

Edoardo Villa

SOUTH AFRICAN 1915-

Winged Figure

signed and dated 1978
bronze
height: 24cm

R20 000 – 30 000

208

Piet (Pieter Gerhardus) van Heerden

SOUTH AFRICAN 1917-1991

Landscape with Houses and Trees

signed and dated 48
oil on canvas
23,5 by 35cm

R20 000 – 30 000

210

Robert Griffiths Hodgins

SOUTH AFRICAN 1920-

Figure

inscribed with the artist's name, title
and dated 1960 on the reverse
oil on board
37,5 by 31,5cm

R30 000 – 40 000

PROVENANCE

Ernst de Jong

211

No Lot

212

Carl Adolph Büchner

SOUTH AFRICAN 1921-2003

Pensive Clown

signed
oil on board
41 by 28,5cm

R15 000 – 20 000

213

Carl Adolph Büchner

SOUTH AFRICAN 1921-2003

District Six

signed
oil on board
45 by 60cm

R20 000 – 30 000

214

Carl Adolph Büchner

SOUTH AFRICAN 1921-2003

A Girl in a Headscarf

signed
oil on canvas board
24 by 17cm

R9 000 – 12 000

215

David Johannes Botha

SOUTH AFRICAN 1921-1995

Rondavels in the Snow, Lesotho

signed and dated '64
oil on board
29 by 52cm

R30 000 – 50 000

216

**Claude Marie Madeleine
Bouscharain**

SOUTH AFRICAN 1922-

Music

signed
oil on canvas
80 by 100cm

R15 000 – 20 000

217

Joseph Wolpe

SOUTH AFRICAN 1922-

Abstract

signed and dated '78
oil on board
6 by 11,5cm

R8 000 – 12 000

218

Cecil Edwin Frans Skotnes

SOUTH AFRICAN 1926-2009

African Figure

signed on the reverse
painted and incised wood panel
40 by 9cm

R8 000 – 12 000



213



216

217



222



219

Piet Kannemeyer

SOUTH AFRICAN 1927-1995

Farm Cottage with Sheep

signed
oil on board
45 by 60cm

R10 000 – 15 000

220

Erik (Frederik Bester Howard) Laubscher

SOUTH AFRICAN 1927-

Somer Wolke

signed and dated 02, signed on the reverse and
inscribed with the title, date, and the artist's e-mail
address
pastel
26 by 38cm

R6 000 – 8 000

221

Adriaan Hendrik Boshoff

SOUTH AFRICAN 1935-2007

The Farm Gate

signed
oil on canvas board
15,5 by 25,5cm

R18 000 – 24 000

222

Christo Coetzee

SOUTH AFRICAN 1929-2001

Plant

signed and inscribed '87 - 22, Tulbagh
SA. Plant'
mixed media on paper
49 by 64cm

R20 000 – 30 000

223

Alexander Cecil Podlashuc

SOUTH AFRICAN 1930-2009

*Fishing Harbour, Port Elizabeth,
April 1966*

signed and dated 1966, inscribed with the
title on the reverse
oil on board
43 by 60cm

R30 000 – 40 000

224

Marianne Podlashuc

SOUTH AFRICAN 1932-2006

South End Street, Port Elizabeth

signed, inscribed with the title on the
reverse
oil on board
67 by 52cm

R15 000 – 20 000

225

Marianne Podlashuc

SOUTH AFRICAN 1932-2006

Packing Wine, Muratie

signed
oil on canvas laid down on board
43,5 by 60cm

R12 000 – 16 000

226

Marianne Podlashuc

SOUTH AFRICAN 1932-2006

Bringing in the QE II

signed
acrylic on canvas
49 by 99cm

R18 000 – 24 000

227

Eben van der Merwe

SOUTH AFRICAN 1932-

Ritual

signed and dated 67
oil on board
75 by 60cm

R15 000 – 20 000

EXHIBITED

XXXIV Esposizione Biennale Internazionale
d'Arte, Venezia, 1968

228

Jo Roos

SOUTH AFRICA 20TH CENTURY

Crouching Khoi Youth

signed
bronze, on a marble base
height: 41cm

R5 000 – 7 000

229

John Meyer

SOUTH AFRICAN 1942-

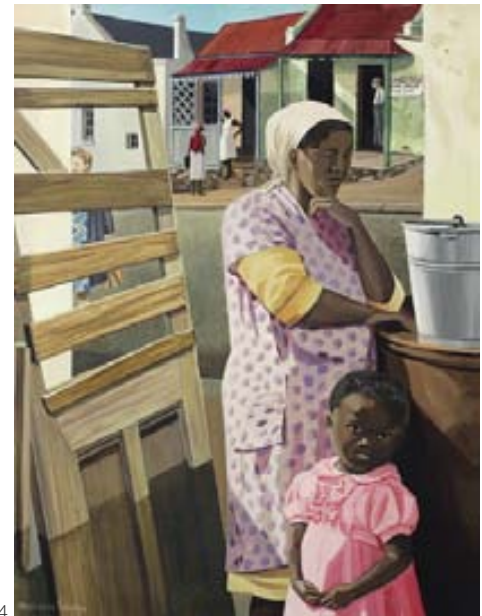
Pablo Casals

Inscribed with the title and the artist's name
on the reverse
oil on board
31,5 by 31,5cm

R30 000 – 40 000



223



224



225

230

Hardy Botha

SOUTH AFRICAN 1947-

Carnival

signed with the artist's monogram
and dated 77
oil on canvas board
73,5 by 91cm

R8 000 – 12 000

231

Johann Louw

SOUTH AFRICAN 1965-

Rocks outside Laingsburg

signed with the artist's initials
oil on canvas
79 by 118cm

R12 000 – 16 000

232

Anton Karstel

SOUTH AFRICAN 1968-

Grahamstown

signed and indistinctly dated
oil on canvas
37 by 49,5cm

R10 000 – 15 000

233

Cecil Edwin Frans Skotnes

SOUTH AFRICAN 1926-2009

The White Monday Disaster

thirteen original woodcuts by Cecil Skotnes, with text by Stephen Gray, 1975, printed in colours, with title and preface, edition limited to 125 sets and 25 artist's proofs, this set numbered Artist Proof XXIII/XXV, each woodcut signed and dated, the title page signed by the artist and the poet, in original full buckram binding
sheet size: 56 by 73cm

R20 000 – 30 000

234

Cecil Edwin Frans Skotnes

SOUTH AFRICAN 1926-2009

The Rooinek

one woodcut in colour and fourteen wood engravings by Cecil Skotnes, with text by Herman Charles Bosman, 1981, edition limited to 75 copies and 10 artist's proofs, this copy numbered 23/75, each signed and numbered by the artist, in good condition and bound in quarter goatskin, matching slip case
sheet size: 32 by 23,5cm

R8 000 – 12 000

235

Wendy Vincent

SOUTH AFRICAN 1941-

The Hunter

twelve engravings by Wendy Vincent with text by Olive Schreiner, 1979, edition limited to 75 copies and 10 artist's proofs, this copy numbered 41/75, each engraving signed and numbered by the artist, in good condition and bound in quarter goatskin, matching slip case
sheet size: 32 by 23,5cm

R7 000 – 10 000

236 – 240

No Lots

229



231



232

