



290

290

**A diamond and synthetic ruby brooch, late 19th century**

of sword design, set with old and eight-cut diamonds, the hilt set with an oval-cut synthetic ruby, suspending an open link curb chain interspersed with four old-cut diamonds

R12 000 – 15 000

**PROVENANCE**

Sir Jacobus Arnoldus Combrink Graaff (1863-1927) and his wife Suzanne Graaff (née Theunissen), and thence by descent to the current owner.



291

291

**A 24ct gold bangle, Pyu Kingdom, Burma, 6th-9th century**

designed with three flowerheads, the shaft joined by coiled threads, 100g

R65 000 – 75 000

292



Property of the Estate Late Edith Dodo

292

**An 18ct gold cigarette case**

engine-turned and engraved with the initials 'ED',  
240g

R25 000 – 30 000

293

**An 18 ct gold and diamond bracelet**

designed as a series of circular rope-twist  
interlocking open-work links, embellished with  
five claw-set brilliant-cut diamonds, length  
approximately 19cm

R16 000 – 18 000

293





294

294

**A diamond and gold double brooch and pendant**

designed as a stylised leaf, the detachable centre set with eight-cut and brilliant-cut diamonds surrounding a brilliant-cut centre stone, four leaves with pavé-set diamonds

R35 000 – 45 000



295

295

**An 18ct yellow and white gold necklace**

designed as a twist-turned rope, length approximately 85cm, 155g

R16 000 – 18 000

296



297



296

**A diamond dress ring**

designed as a stylised flowerhead with seven claw-set old-cut diamonds to the centre, 18ct white gold basket band, size P

R6 000 – 7 000

297

**A diamond bracelet, 1920s**

designed as a graduated line of nine millegrain box-link set with brilliant-cut diamonds, with later strap, length approximately 17,5cm

R22 000 – 24 000

298

**A diamond single-stone ring**

claw-set with a round brilliant-cut diamond weighing 4.1160 carats, size O

*Accompanied by a report No. 100101179/507405 from E.G. Laboratory, South Africa, stating that the diamond weighing 4.1160 carats is K colour and VS2 clarity*

R150 000 – 160 000

299

**A diamond ring**

claw-set with an emerald-cut diamond weighing 3.2850 carats, between baguette diamond shoulders, size N½

*Accompanied by a report No. 90300060/505170 from E.G. Laboratory, South Africa, stating that the diamond weighing 3.2850 carats is D colour and VS2 clarity*

R350 000 – 360 000

300

**A diamond eternity band**

mounted all around with forty-two baguette-cut diamonds, size N

R18 000 – 24 000

Property of the Estate Late  
Mrs RN Robb

301

**A diamond brooch**

designed as a stylised sunflower, claw-set with twenty-two brilliant-cut diamonds, stamped maker's marks Trigg Jewellers

R30 000 – 35 000

298



299



300



301







302

**A ruby and diamond demi-parure**

*the necklace designed as four rows of circular-cut rubies, linked between stylised cornucopias set with rubies and brilliant- and eight-cut diamonds, on a chain and a pair of earrings en suite (3)*

R65 000 – 75 000



303



304

---

### Various properties

303

**A lady's diamond and platinum cocktail watch, Longines, 1930s**

the square dial with Arabic numerals, the bezel and the shoulders millegrain-set and embellished with eight-cut and baguette diamonds, on a later 18ct white gold mesh strap, length approximately 18,5cm

R15 000 – 20 000

304

**A sapphire and diamond ring**

set with a cushion-shaped sapphire weighing 8,40 carats between two cushion-cut diamonds, mounted in platinum, size N

*Accompanied by report No. 20007-091684, dated 21 August 2007 from the GRS Gemresearch Swisslab stating that the sapphire is of Sri Lankan origin*

R400 000 – 500 000

305



306



305

**An emerald and diamond ring**

set with a step-cut emerald weighing 4.54 carats, between two triangular shaped diamonds, mounted in platinum, size N

*Accompanied by Report No. 2007-082014 dated 21 August 2007 from the GRS Gemresearch Swisslab stating that the emerald is of Columbian origin*

**R550 000 – 600 000**

306

**A diamond bracelet**

set with twenty-eight graduated brilliant-cut diamonds flanked by eight-cuts, length approximately 18,5 cm

**R110 000 – 120 000**





307



307

**An unset round brilliant-cut diamond**

weighing 6.2100 carats

*Accompanied by a report no. 90901919/506466 from E.G. Laboratory, South Africa, stating that the diamond weighing 6.2100 carats is Fancy Vivid Yellow (N.C.A.) and S12 clarity.*

**R500 000 – 600 000**



308

308

**An unmounted Elbaite  
Tourmaline**

the oval-cut tourmaline weighing 6.97  
carats

*Accompanied by a report No. 07.08.30.10214  
from The Gem and Jewellery Institute of  
Thailand*

**R250 000 – 300 000**

Elbaite tourmalines are found and mined not only in Brazil, but in copper rich areas such as Nigeria and Mozambique. Traces of iron, manganese, chromium and vanadium are responsible for giving tourmalines their colour, however this is different for Elbaite tourmaline as it owes its spectacular colour to the presence of copper.



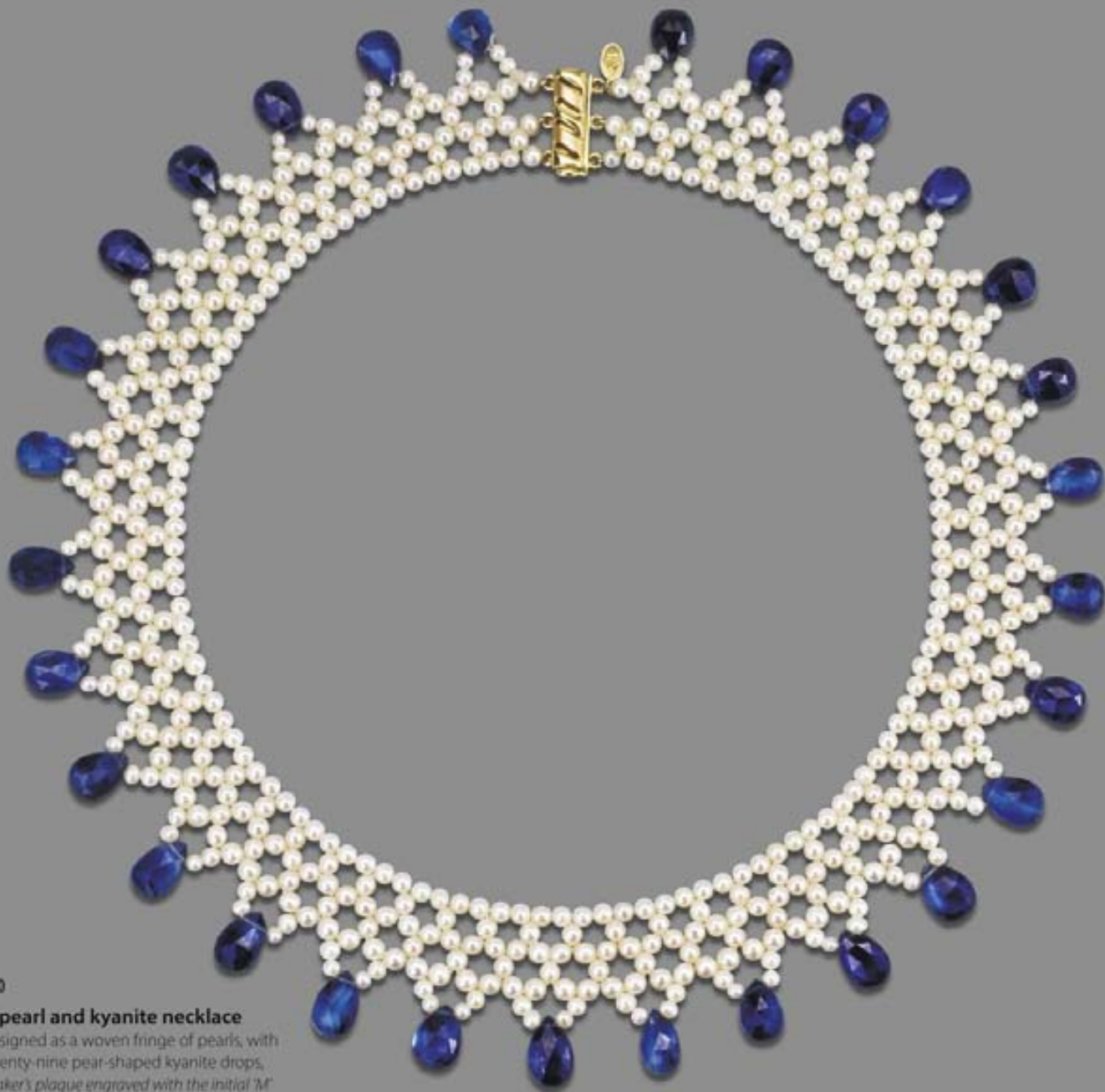


309

**A Southsea pearl and diamond necklace**

designed as a single row of thirty-one Southsea pearls, graduated in size from approximately 11mm to 15mm, to a spherical clasp, pavé-set with brilliant-cut diamonds, length approximately 40,5cm; and a baroque pearl and diamond enhancer pendant, set with a princess-cut and pear-shaped diamond (2)

R180 000 – 200 000



310

**A pearl and kyanite necklace**

designed as a woven fringe of pearls, with  
twenty-nine pear-shaped kyanite drops,  
*maker's plaque engraved with the initial 'M'*

R12 000 – 15 000

311–314

**No Lots**